

# V&V Reference Report

## L2 ASCDS Version : 8.4.5

Observation 1038 - L2 Version 4  
Chandra X-Ray Center

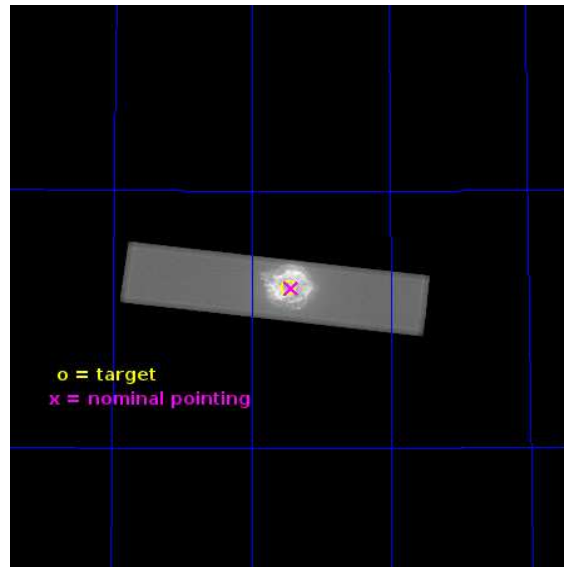
L2 Processing Date : Jun 28 2013

## Contents

<b>1</b>	<b>Front</b>	<b>2</b>
<b>2</b>	<b>OBI</b>	<b>3</b>
2.1	OBI . . . . .	3
2.1.1	Images . . . . .	3
2.1.2	Parameters . . . . .	4
2.1.3	Events . . . . .	4
2.2	Compared Parameters . . . . .	5
2.3	Aspect . . . . .	6
2.4	Star Slots . . . . .	9
2.4.1	Slot 3 . . . . .	9
2.4.2	Slot 4 . . . . .	10
2.4.3	Slot 5 . . . . .	11
2.4.4	Slot 6 . . . . .	12
2.4.5	Slot 7 . . . . .	13
2.5	FID Slots . . . . .	14
2.5.1	Slot 0 . . . . .	14
2.5.2	Slot 1 . . . . .	15
2.5.3	Slot 2 . . . . .	16
<b>A</b>	<b>Summary</b>	<b>17</b>
A.1	Status . . . . .	17
A.2	Comments . . . . .	17

# 1 Front

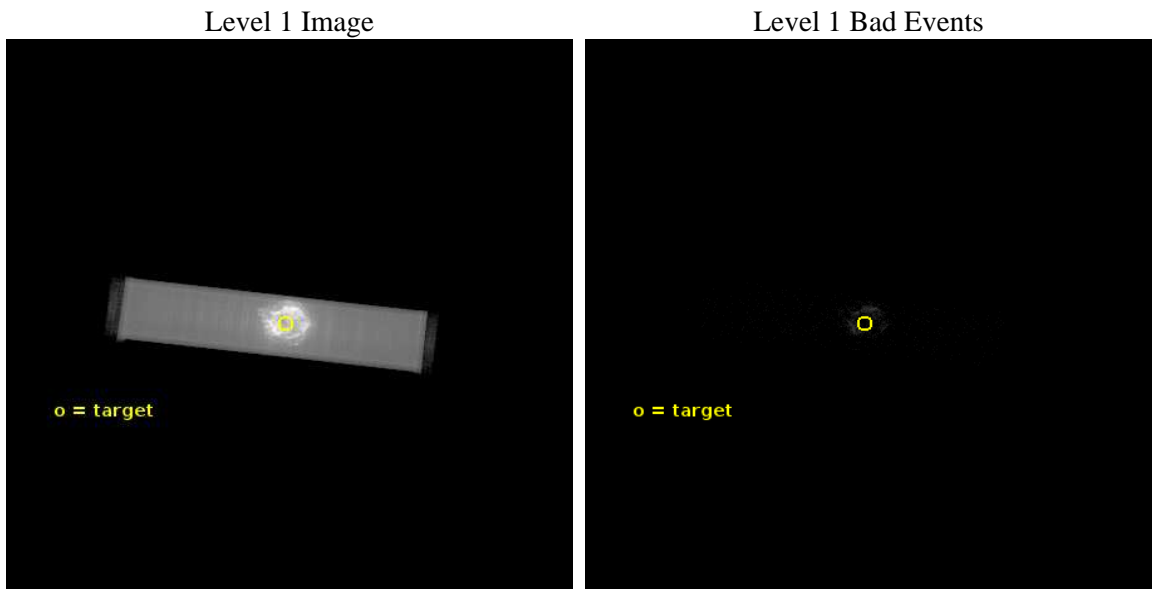
seq_num	500104	Sequence number
obs_id	1038	Observation id
title	EXPANSION OF THE SNR CAS-A	Proposal title
observer	Dr. Stephen Murray	Principal investigator
object	CAS-A	Source name
ra_targ	350.866042	Observer's specified target RA [deg]
dec_targ	58.811694	Observer's specified target Dec [deg]
ra_nom	350.85684613579	Nominal RA [deg]
dec_nom	58.811299380496	Nominal Dec [deg]
roll_nom	186.64411715664	Nominal Roll [deg]
revision	4	Processing version of data
ontime	50423.851995051	[s]
livetime	49981.069465061	Ontime multiplied by DTCOR
l2events	5653690	Number of level 2 events



## 2 OBI

### 2.1 OBI

#### 2.1.1 Images



## 2.1.2 Parameters

obi_num	0	Obi number	sched_exp_time	50600.000000	[s] Scheduled observation exposure time
ascdsver	10	Processing system revision	ontime	50423.851995051	[s]
caldsver	4.5.7	&#160	l1events	6470174	Number of level 1 events
date	2013-06-29T00:16:43	Date and time of file creation			
revision	4	Processing version of data			

## 2.1.3 Events

### Level 1 Events

	<b>segment 1</b>	<b>segment 2</b>	<b>segment 3</b>
level 1 events	3208	6466950	16
rejected events	3	5986	10
rejected %	0%	0%	62%

## 2.2 Compared Parameters

Parameter	Planned	Actual	Parameter	Planned	Actual
Instrument	HRC	HRC	Obspar format version number	7	7
Detector	HRC-S	HRC-S	Obspar file type	PREDICTED	ACTUAL
Grating	NONE	NONE	Obspar update status	NONE	UPDATED
Data mode	OBSERVING	OBSERVING			
Observation mode	POINTING	POINTING			
[deg] Pointing RA	350.899675	350.8568461357895			
[deg] Pointing Dec	58.829459	58.81129938049571			
[deg] Pointing Roll	186.540144	186.644117156642			
[s] Window start time (MET)	115689664.184000	115689664.184000			
[s] Window stop time (MET)	120873664.184000	120873664.184000			
[mm] SIM focus pos	-1.529586	-1.523540733526241			
[mm] SIM defocus	0.003750771043328743	0.009795905878055677			
[mm] SIM translation stage pos	250.455976	250.466033080201			
[mm] SIM translation stage offset	0	-0.01005468664627074			
[s] Observation start time (MET)	117263747.184000	117262740.39182			
Observation start date	2001-09-19T05:14:43	2001-09-19T04:59:00			
[s] Observation end time (MET)	117314347.184000	117314762.21888			
Observation end date	2001-09-19T19:18:03	2001-09-19T19:26:02			

## 2.3 Aspect



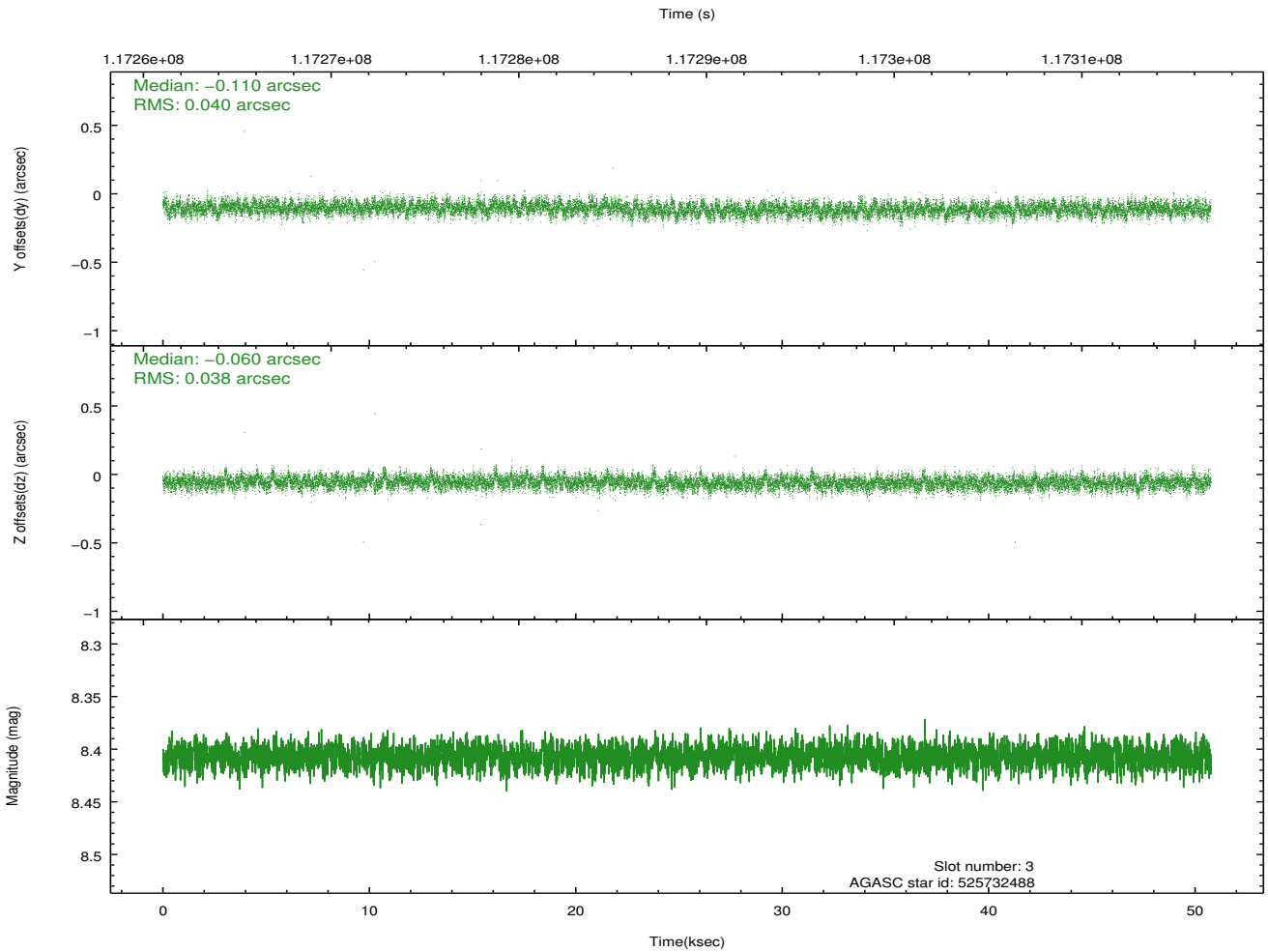
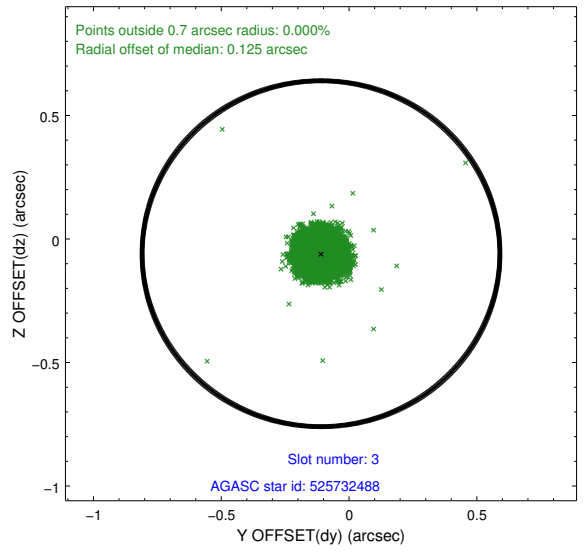
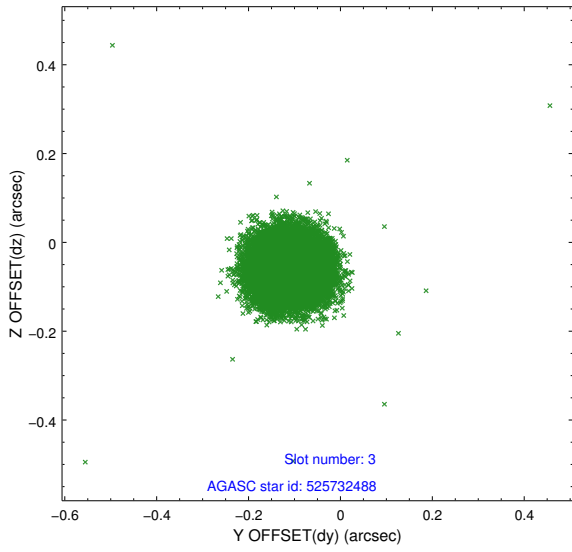
### Slot Statistics

slot	status	id	mag	n_pts	med_dy	med_dz	dr1	dr2	ra	dec	mean_y	mean_z
0	FID	HRC-S-1	6.98	12383	0.157	-0.160	0.011	0.018	0.000000	0.000000	-1157.21	-453.89
1	FID	HRC-S-2	6.98	12384	0.090	-0.096	0.019	0.028	0.000000	0.000000	1242.30	-446.54
2	FID	HRC-S-3	7.01	12382	0.140	-0.045	0.010	0.016	0.000000	0.000000	-1159.83	575.71
3	GUIDE	525732488	8.41	24761	-0.110	-0.060	0.058	0.094	350.087090	58.516915	1645.53	935.18
4	GUIDE	525735976	8.89	24757	-0.055	-0.098	0.076	0.122	350.142956	58.277622	1649.24	1803.09
5	GUIDE	525732232	9.12	24757	0.038	-0.036	0.087	0.147	351.669550	58.757012	-1398.63	415.34
6	GUIDE	525732528	9.37	24719	0.100	0.073	0.093	0.154	351.607241	59.298932	-1484.40	-1537.30
7	GUIDE	525737208	9.37	24731	0.026	0.124	0.100	0.160	351.154109	59.407897	-699.54	-2016.07

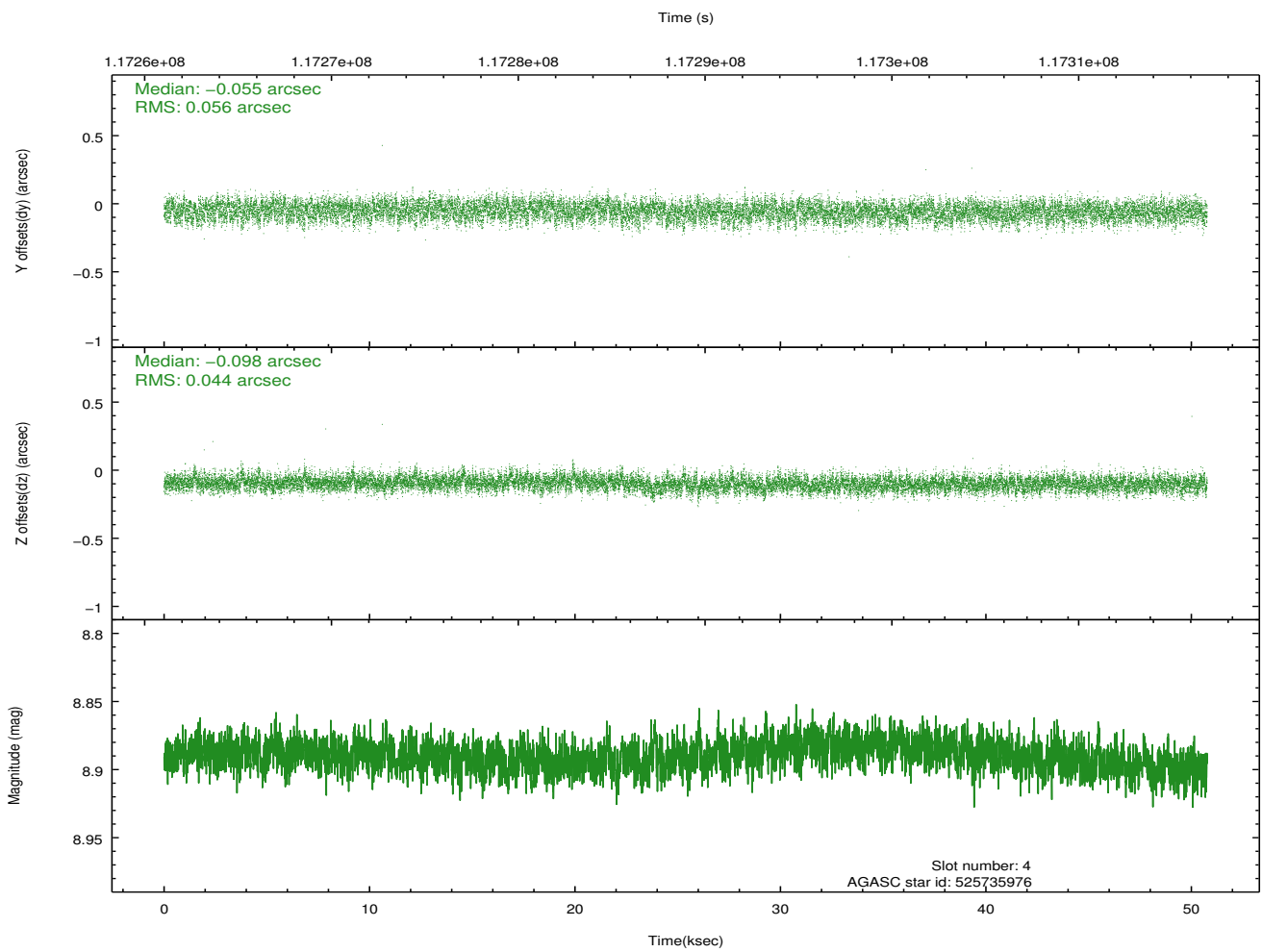
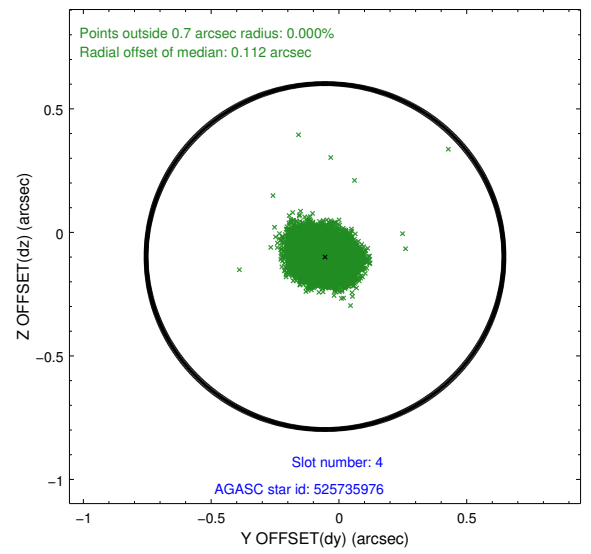
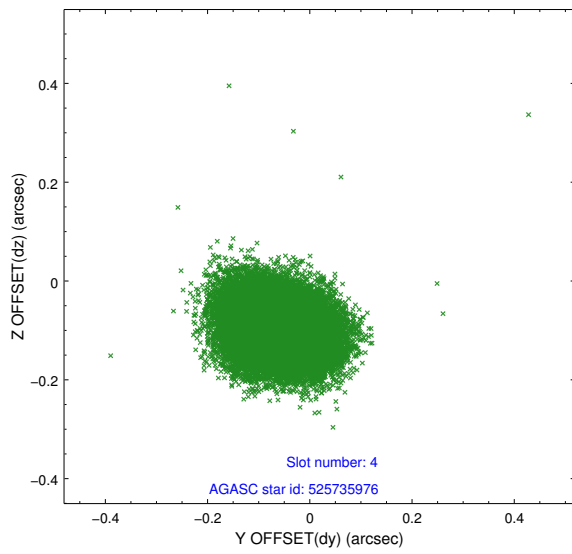
∞

## 2.4 Star Slots

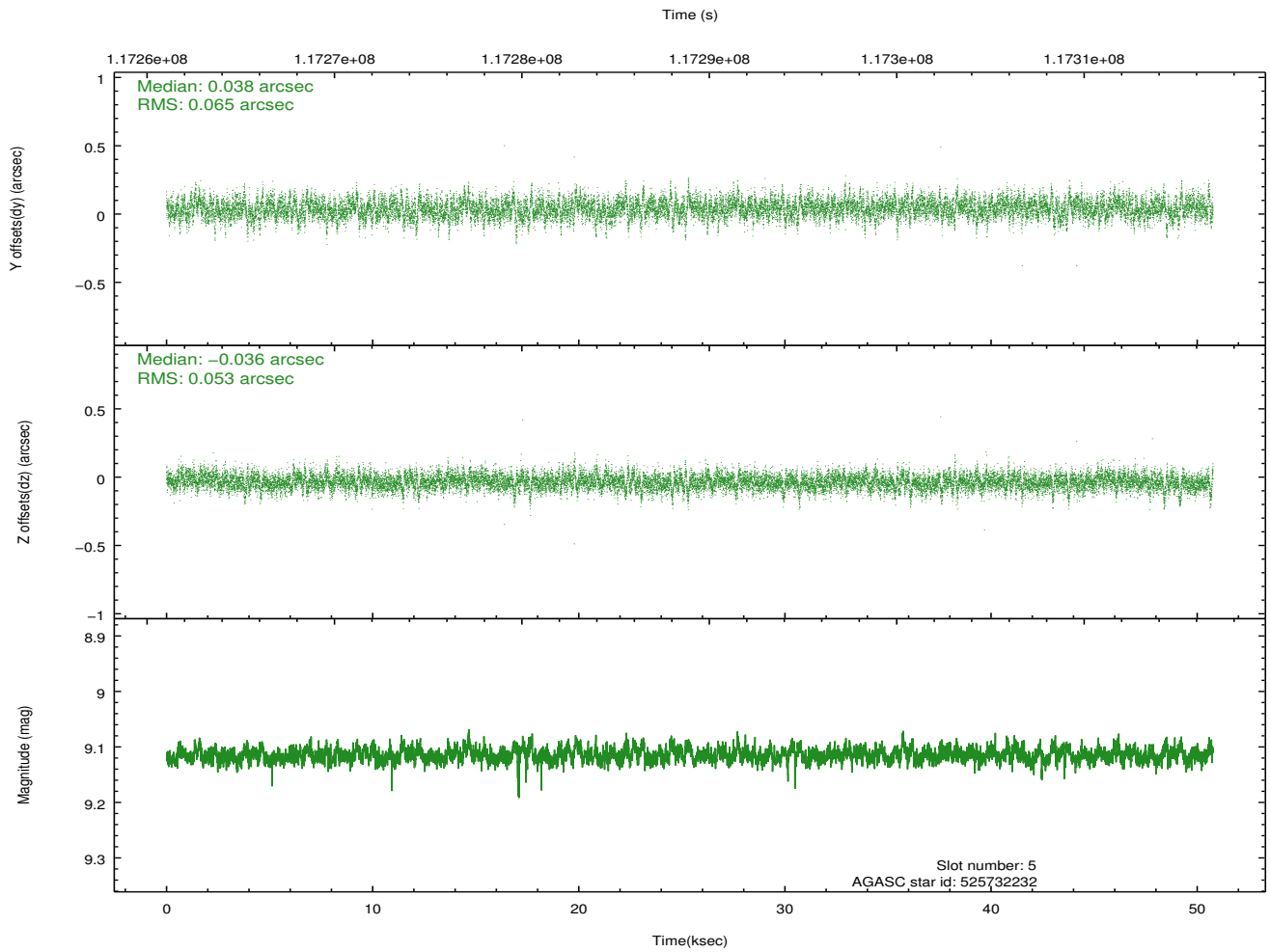
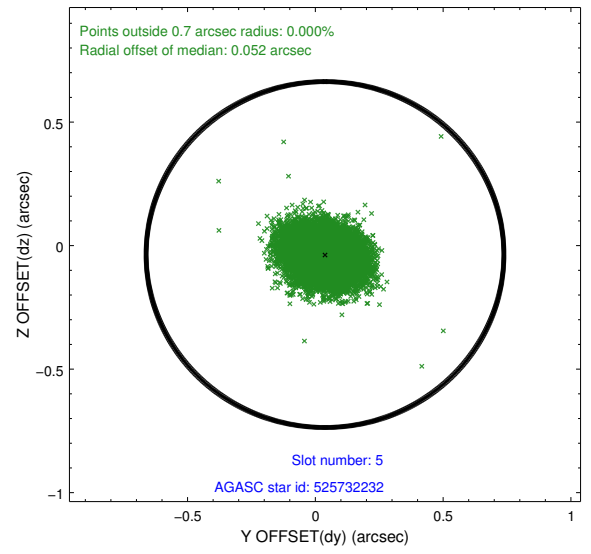
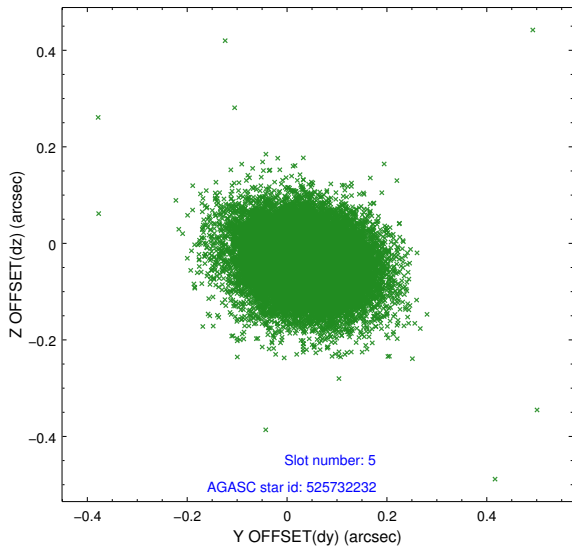
### 2.4.1 Slot 3



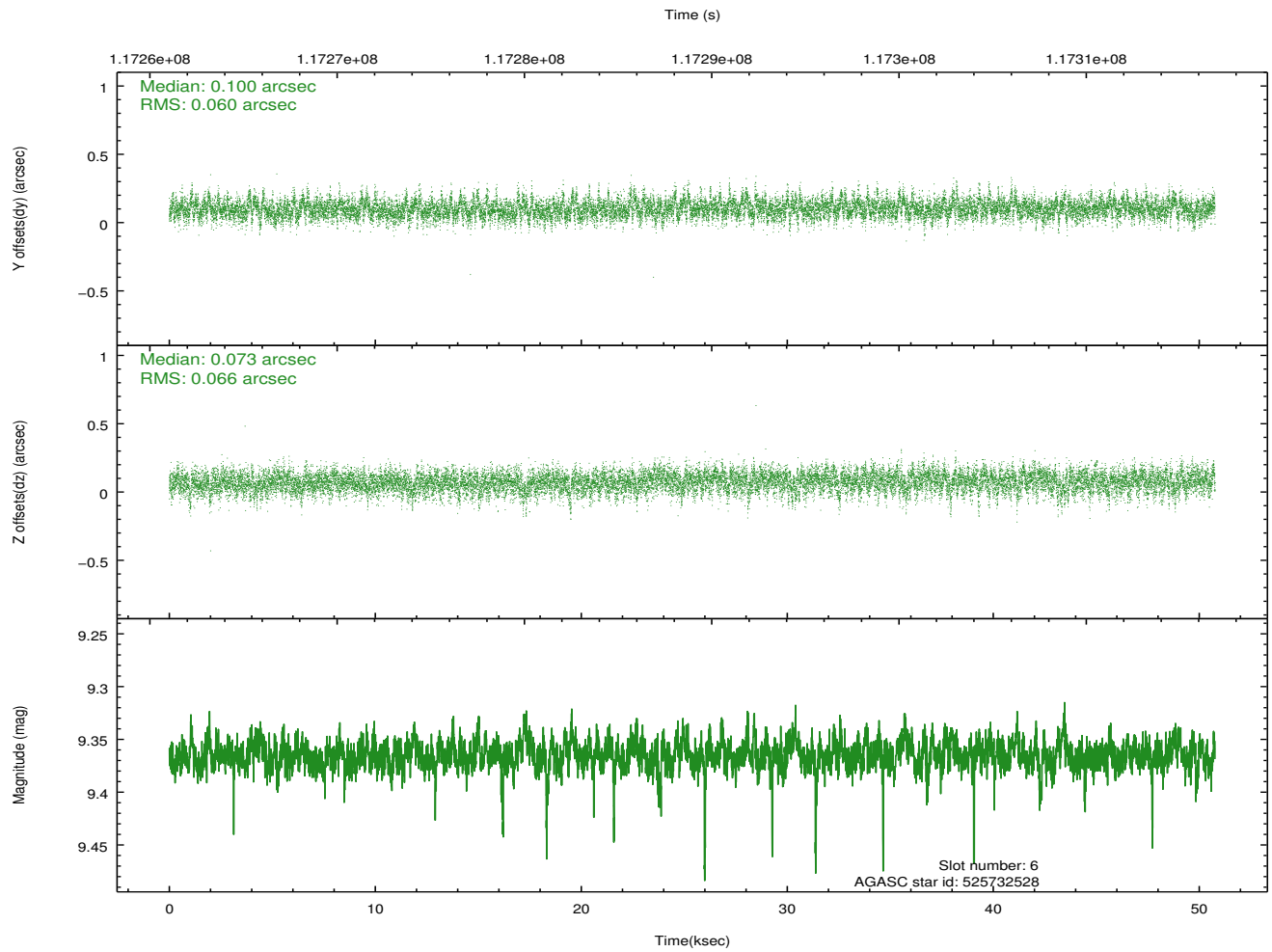
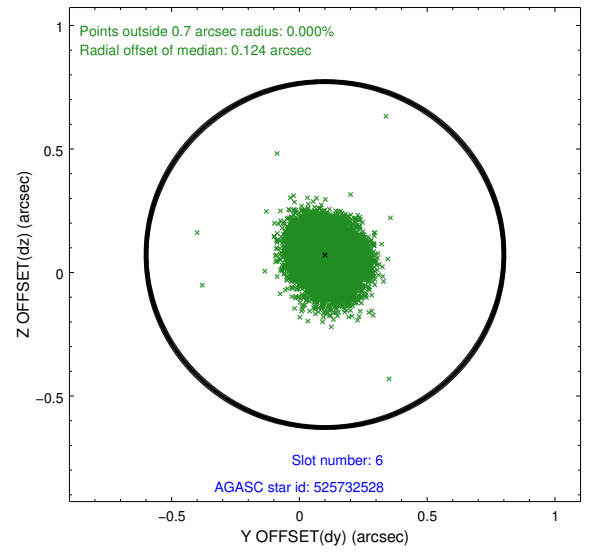
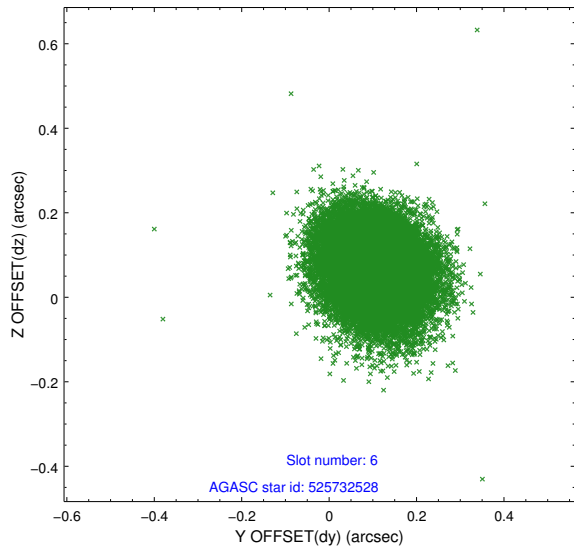
## 2.4.2 Slot 4



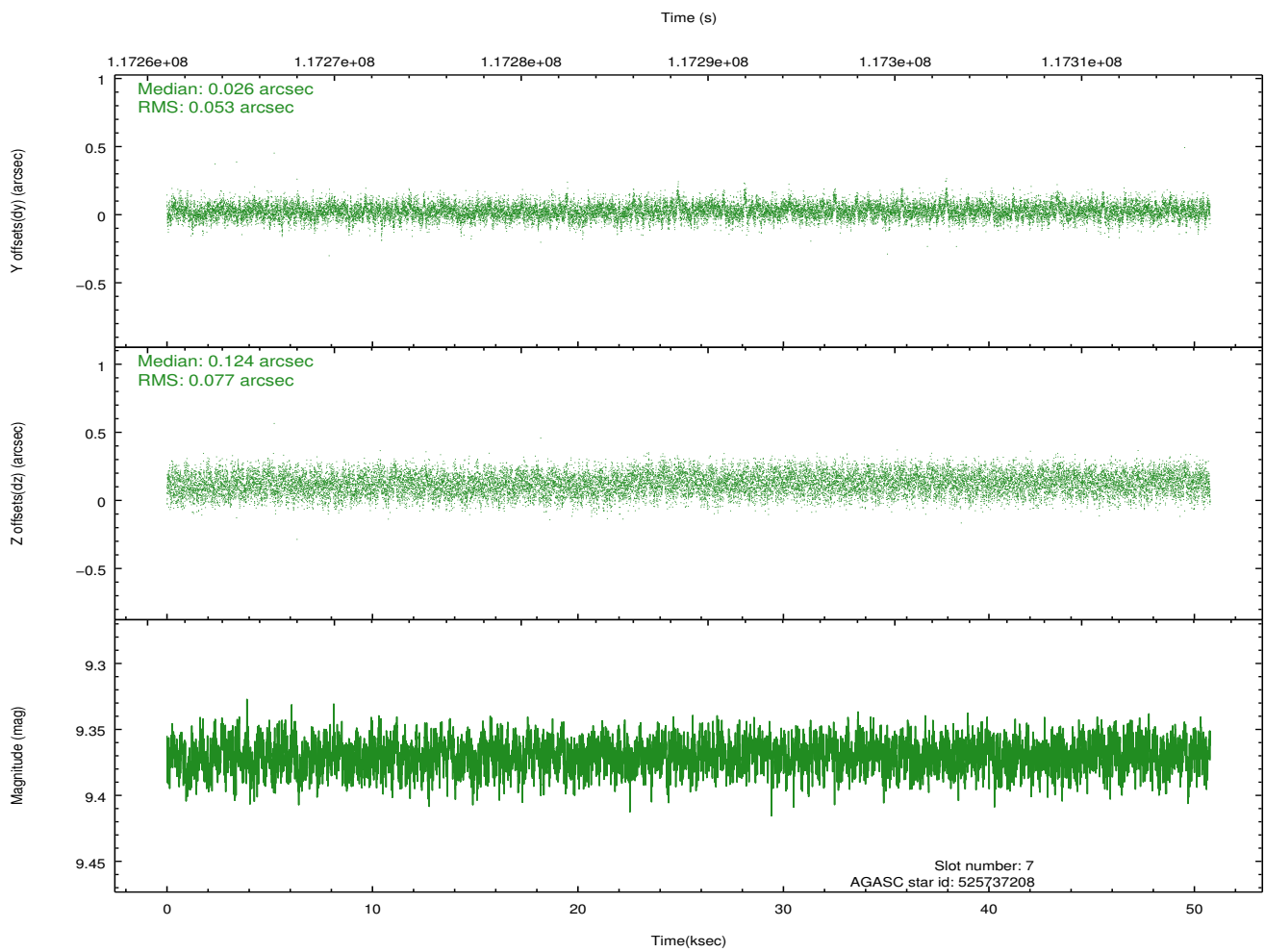
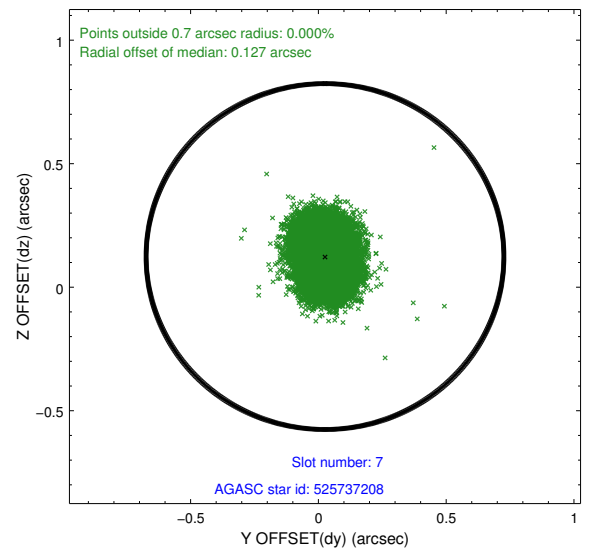
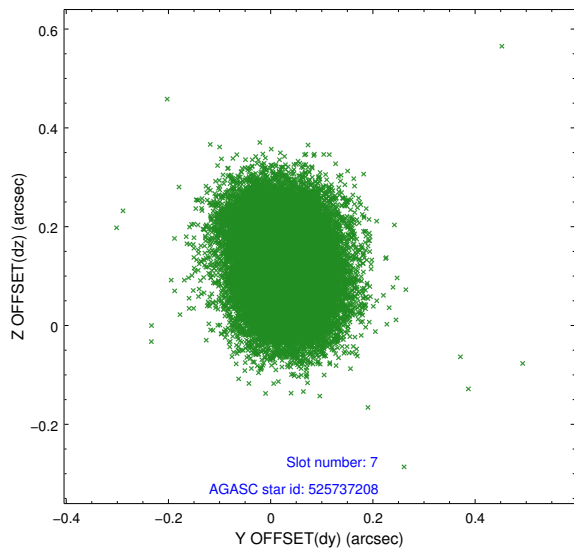
### 2.4.3 Slot 5



## 2.4.4 Slot 6

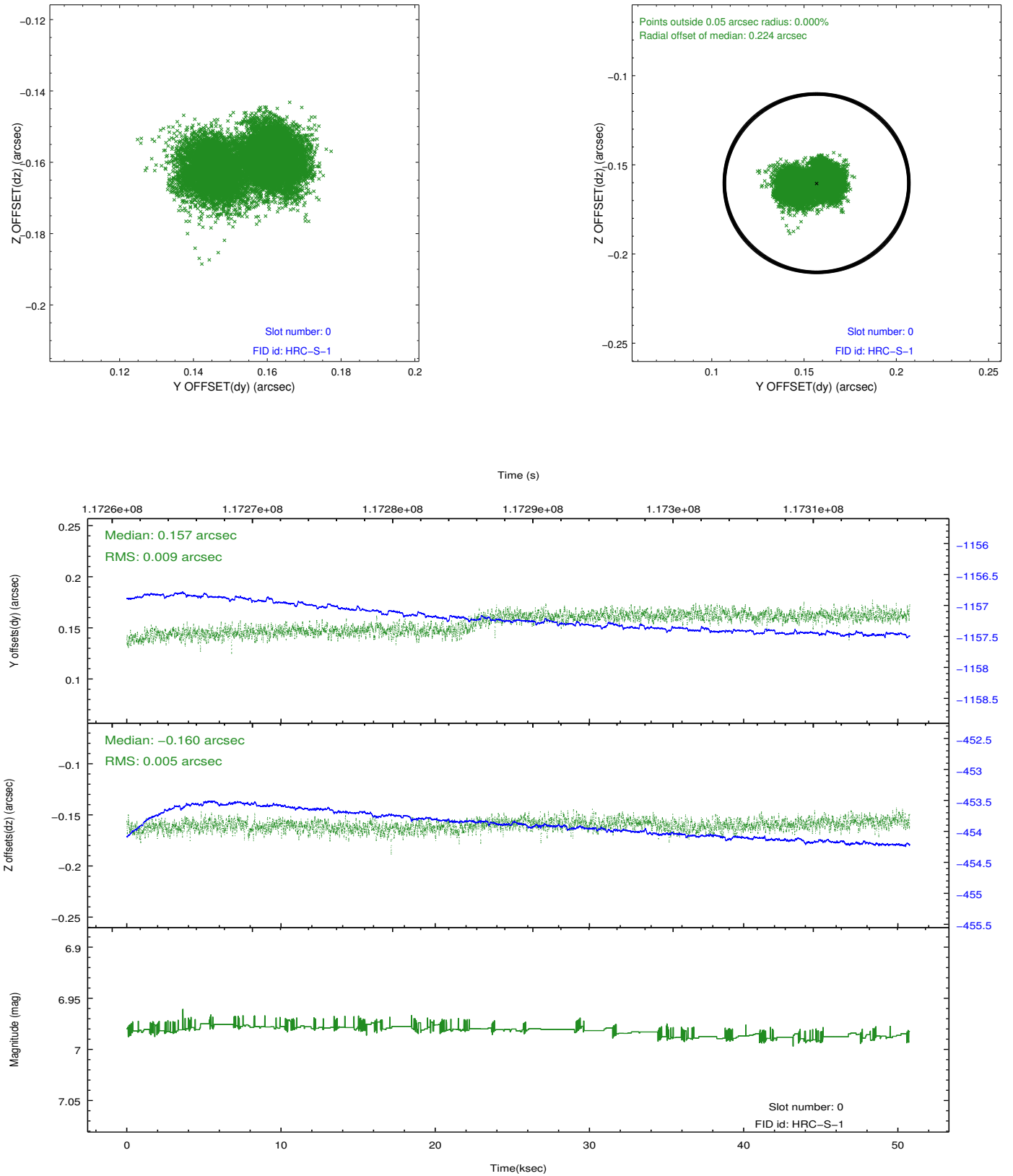


## 2.4.5 Slot 7

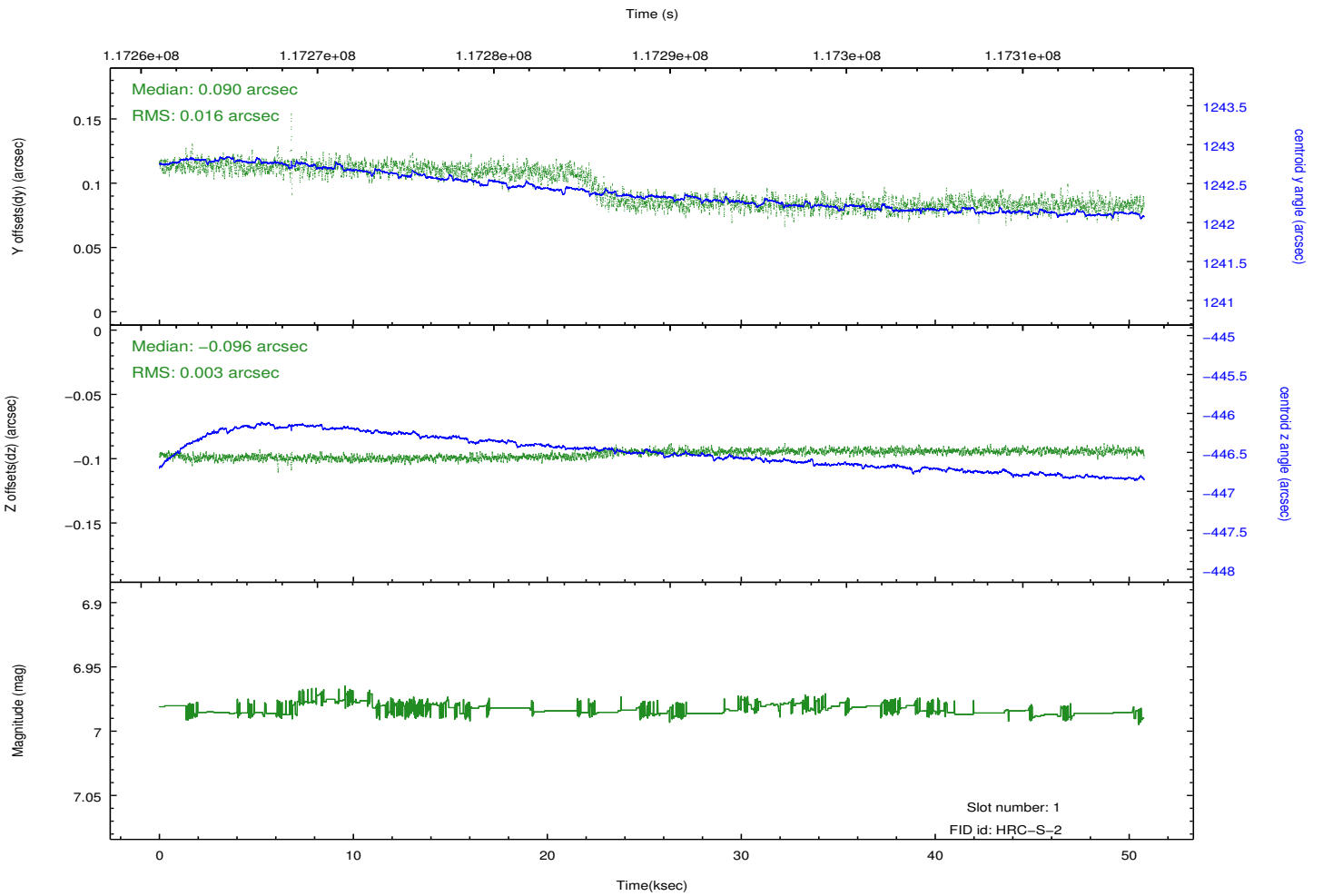
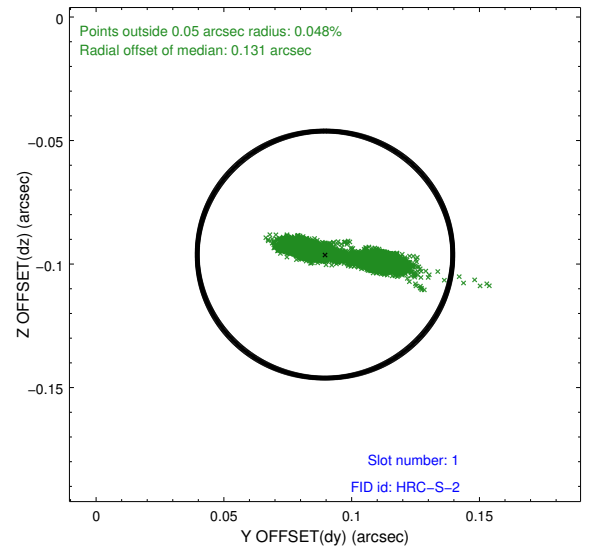
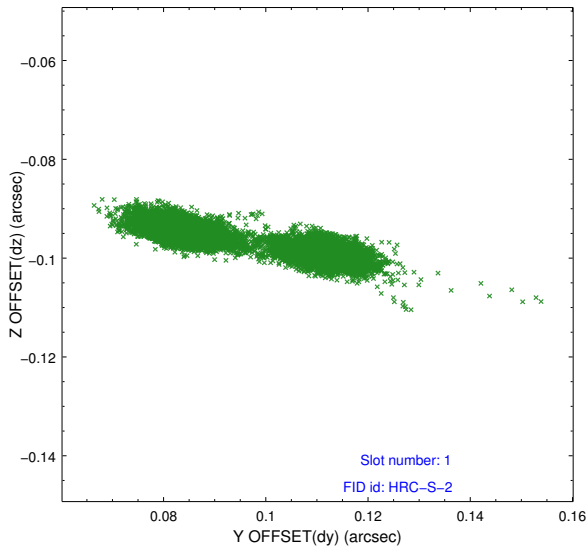


## 2.5 FID Slots

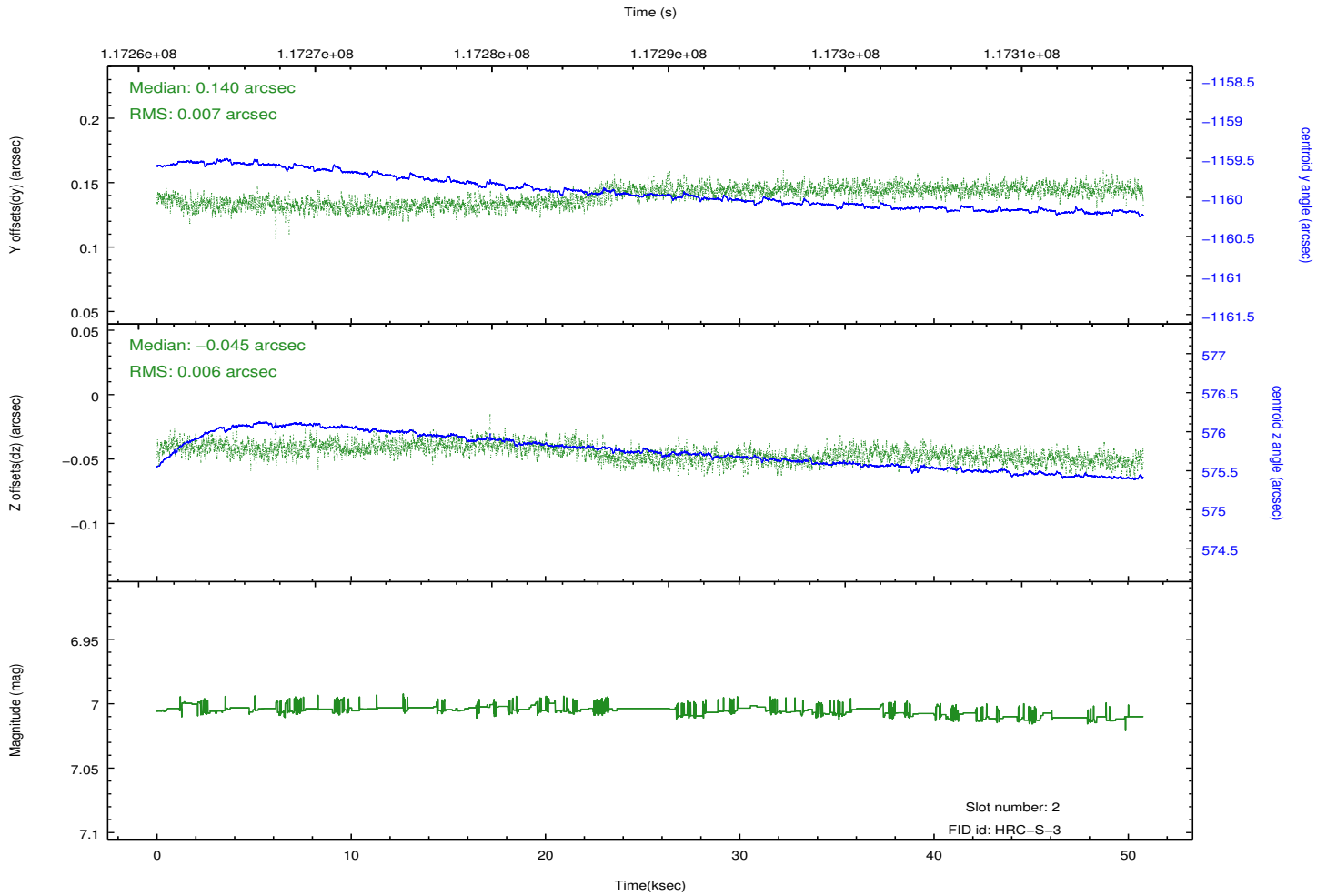
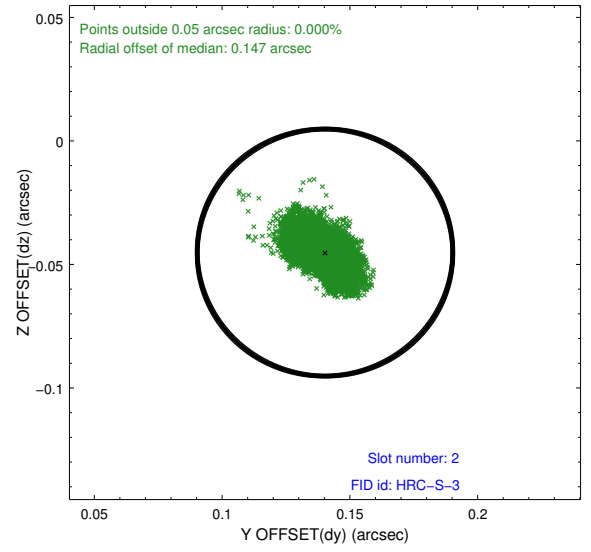
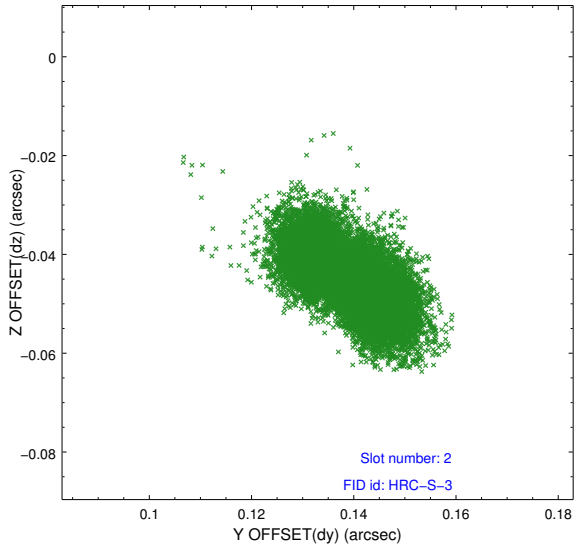
### 2.5.1 Slot 0



## 2.5.2 Slot 1



### 2.5.3 Slot 2



# A Summary

## A.1 Status

V&V Scientist	Beth Sundheim
V&V Date (YYYY-MM-DD)	2013.07.01
V&V Edition	1
V&V Disposition and Status	OK
V&V Charge Time	50.4

## A.2 Comments

Window preference met.