

V&V Reference Report

L2 ASCDS Version : 8.4.5

Observation 10528 - L2 Version 2
Chandra X-Ray Center

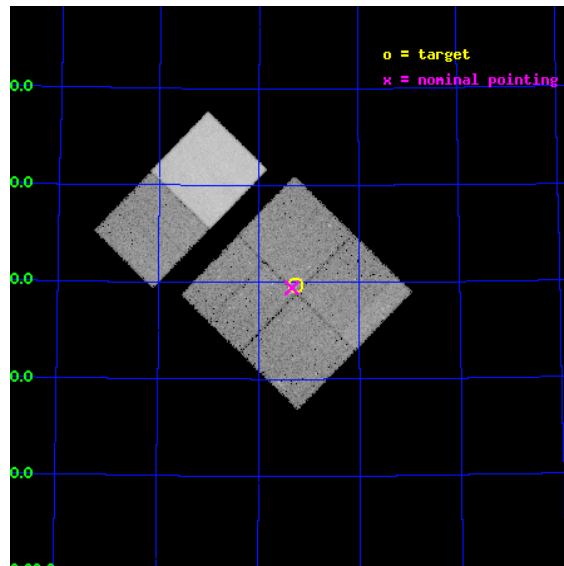
L2 Processing Date : Jun 7 2012

Contents

1	Front	2
2	OBI	3
2.1	OBI	3
2.1.1	Images	3
2.1.2	Bias	3
2.1.3	Parameters	4
2.1.4	Events	4
2.2	Compared Parameters	5
2.3	Aspect	6
2.4	Star Slots	9
2.4.1	Slot 3	9
2.4.2	Slot 4	10
2.4.3	Slot 5	11
2.4.4	Slot 6	12
2.4.5	Slot 7	13
2.5	FID Slots	14
2.5.1	Slot 0	14
2.5.2	Slot 1	15
2.5.3	Slot 2	16
A	Summary	17
A.1	Status	17
A.2	Comments	17

1 Front

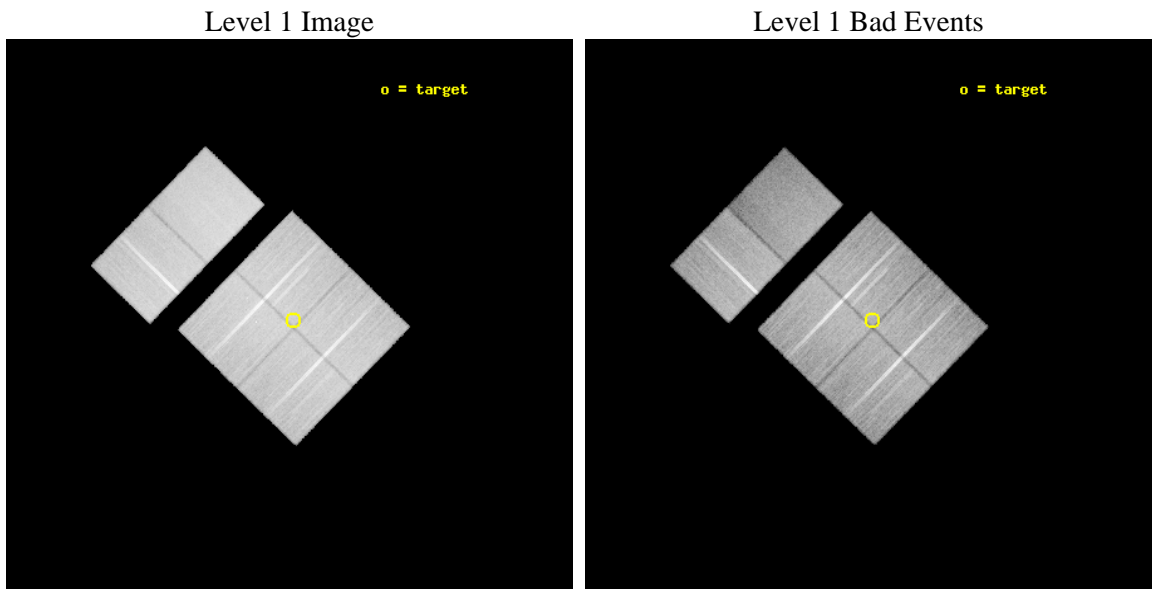
seq_num	600721	Sequence number
obs_id	10528	Observation id
title	The Baryons Content of the Most Massive Spiral Galaxy	Proposal tit
observer	Dr. Joel Bregman	Principal investigator
object	NGC 1961	Source name
dtcycle	0	
cycle	P	events from which exps? Prim/Second/Both
ra_targ	85.814601	Observer's specified target RA [deg]
dec_targ	69.494685	Observer's specified target Dec [deg]
ra_nom	85.834895777222	Nominal RA [deg]
dec_nom	69.490813577236	Nominal Dec [deg]
roll_nom	314.18967365355	Nominal Roll [deg]
revision	2	Processing version of data
ontime	32054.399880648	Sum of GTIs [s]
livetime	31648.507768517	Livetime [s]
ontime0	32047.918019772	Sum of GTIs [s]
ontime1	32047.917920172	Sum of GTIs [s]
ontime2	32054.399880648	Sum of GTIs [s]
ontime3	32054.399880648	Sum of GTIs [s]
ontime6	32054.399880648	Sum of GTIs [s]
ontime7	32054.399880648	Sum of GTIs [s]
l2events	257580	Number of level 2 events



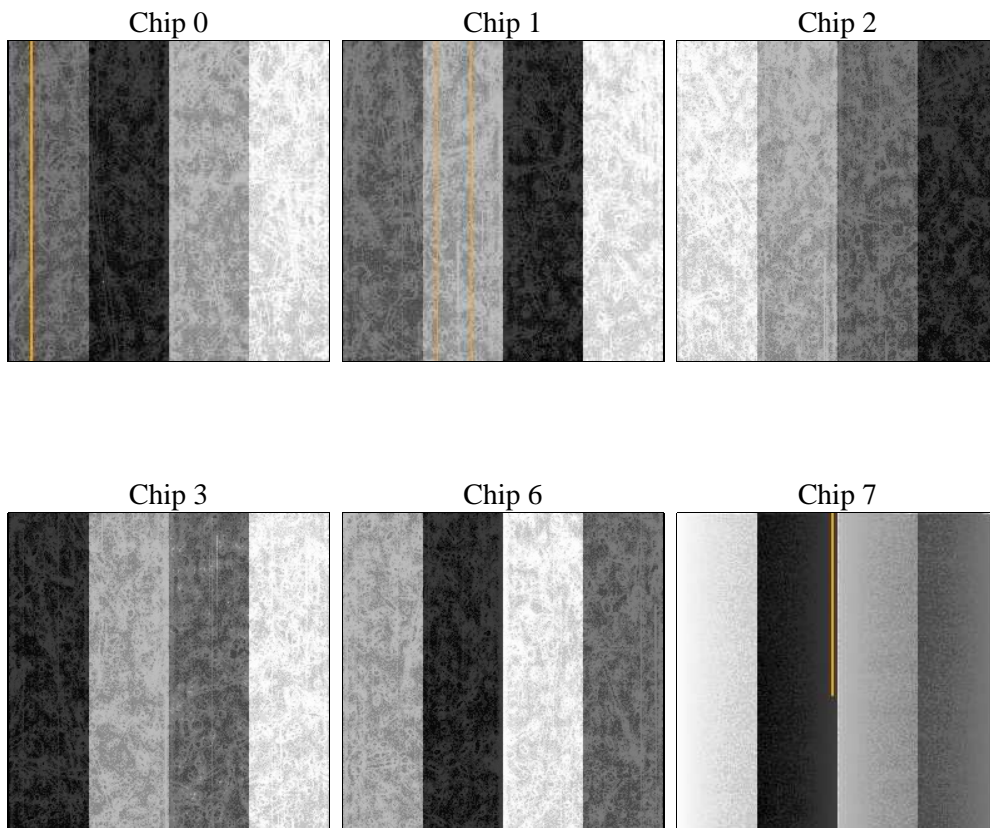
2 OBI

2.1 OBI

2.1.1 Images



2.1.2 Bias



2.1.3 Parameters

obi_num	0	Obi number	sched_exp_time	32000.000000	[s] Scheduled observation exposure time
ascdsver	8.4.5	Processing system revision	ontime	32054.399880648	Sum of GTIs [s]
caldbver	4.4.10	 	ontime0	32047.918019772	Sum of GTIs [s]
date	2012-06-07T02:05:41	Date and time of file creation	ontime1	32047.917920172	Sum of GTIs [s]
revision	2	Processing version of data	ontime2	32054.399880648	Sum of GTIs [s]
			ontime3	32054.399880648	Sum of GTIs [s]
			ontime6	32054.399880648	Sum of GTIs [s]
			ontime7	32054.399880648	Sum of GTIs [s]
			l1events	1695205	Number of level 1 events

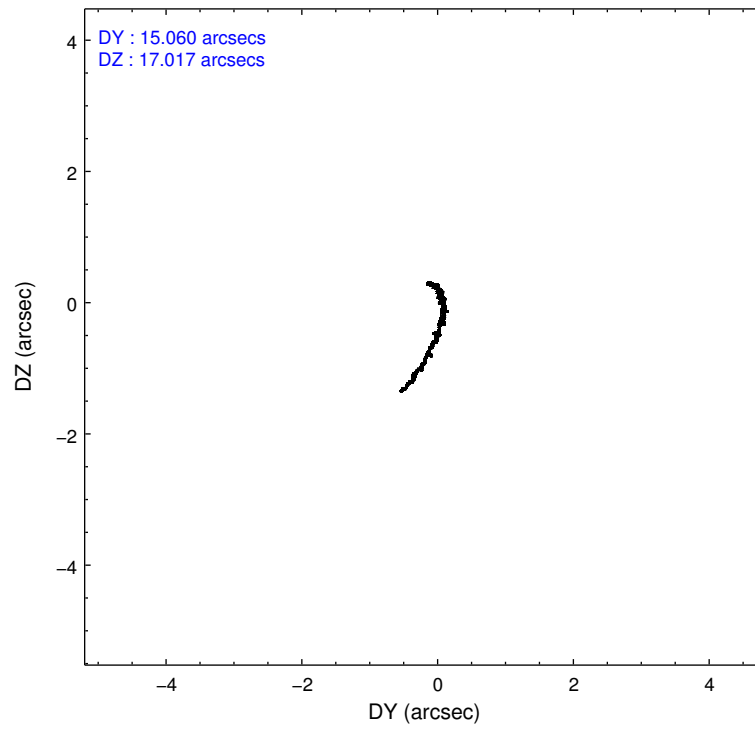
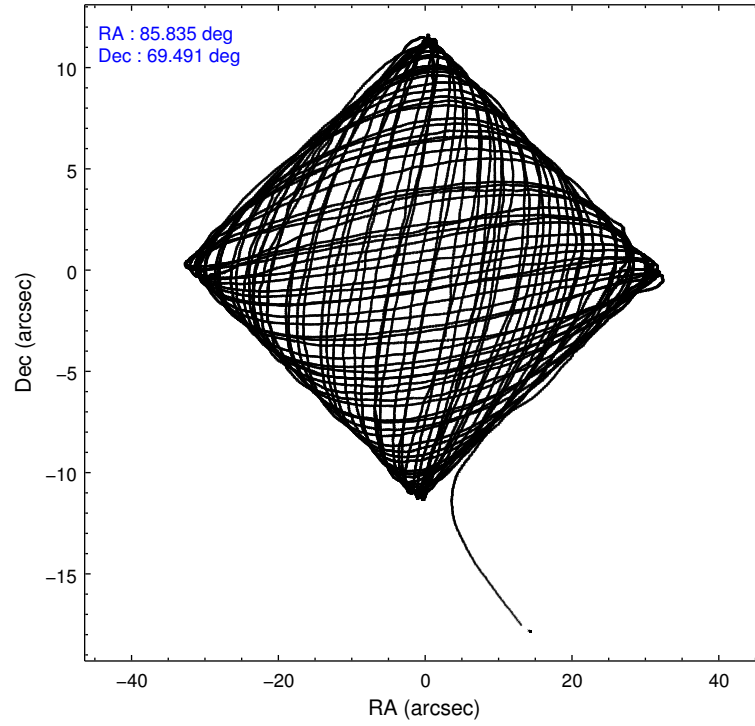
2.1.4 Events

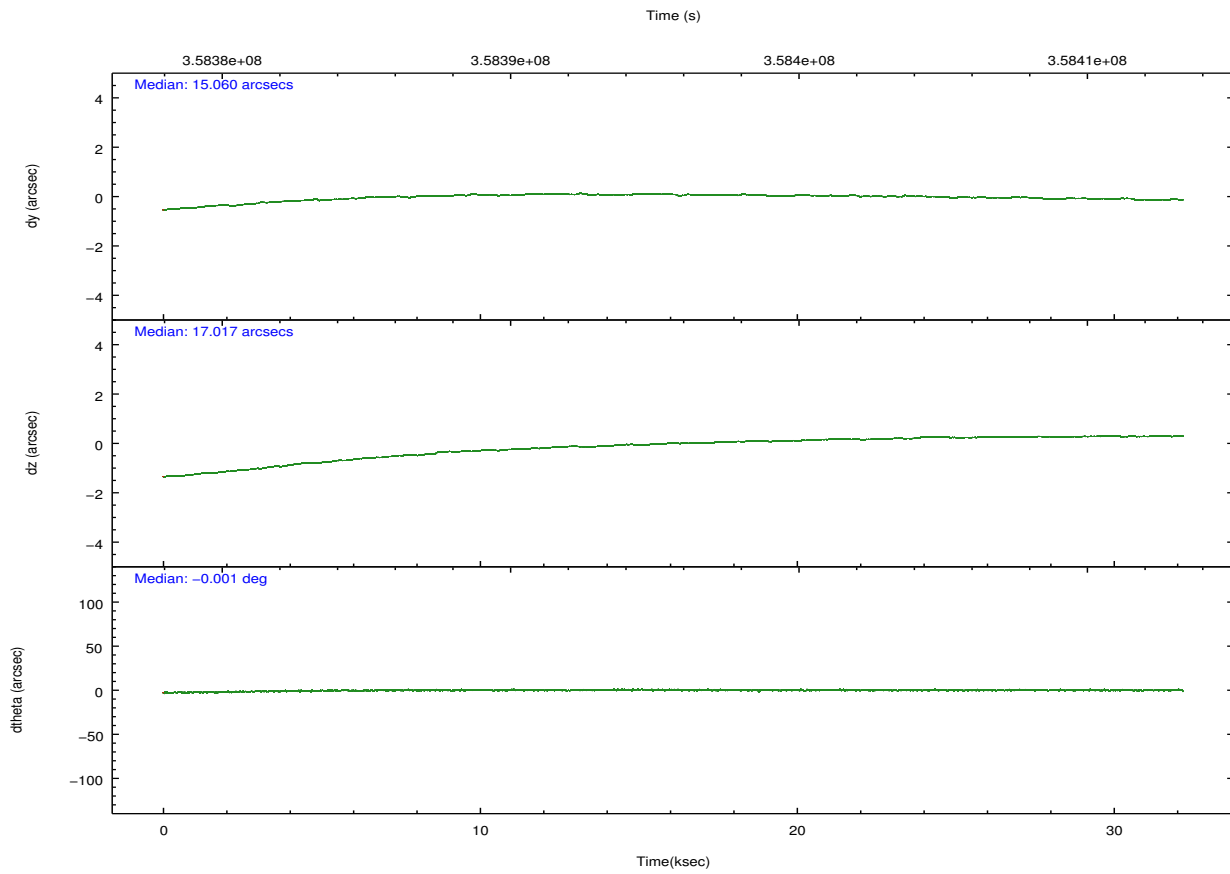
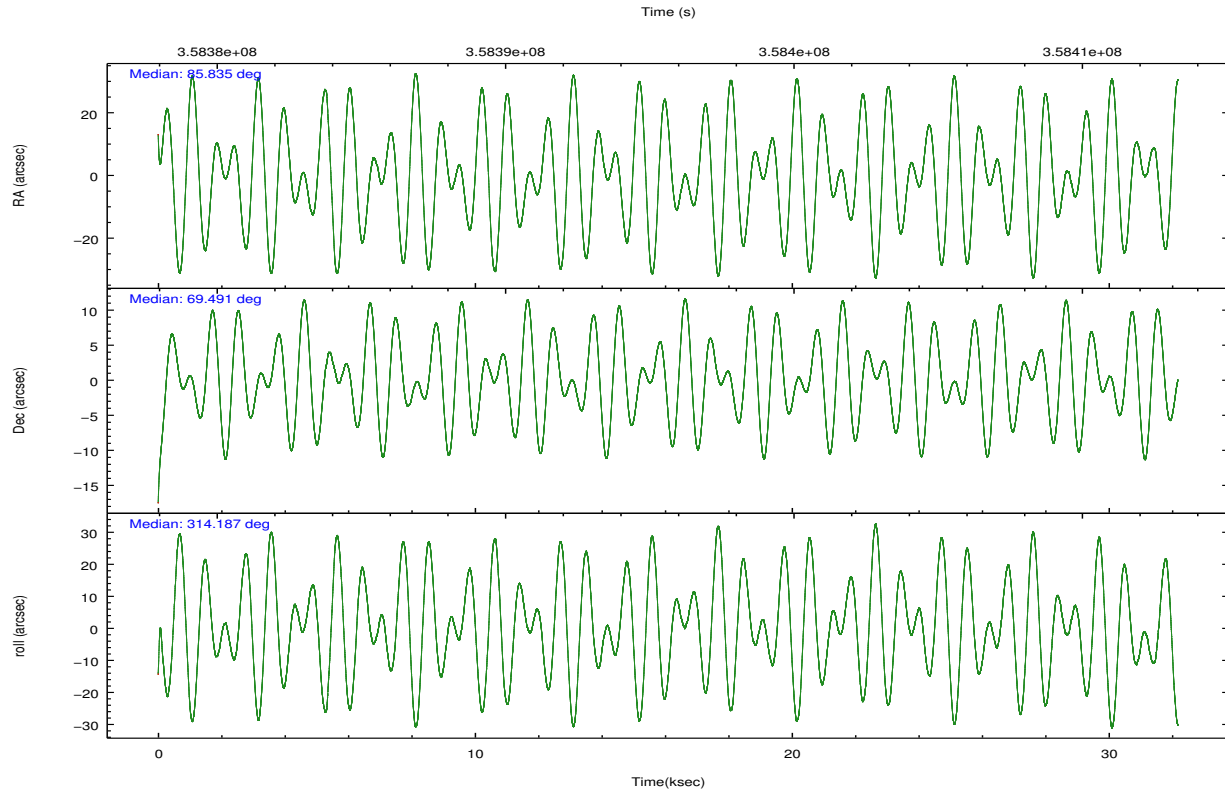
	ccd 0	ccd 1	ccd 2	ccd 3	ccd 6	ccd 7		ccd 0	ccd 1	ccd 2	ccd 3	ccd 6	ccd 7
level 1 events	258894	262918	293512	276362	289091	314428	grade 0 events	9763	11367	10629	9046	9764	13052
rejected events	231050	231493	265306	250412	260222	171225		3%	4%	3%	3%	3%	4%
rejected %	89%	88%	90%	90%	90%	54%	grade 1 events	153	148	161	151	158	389
								0%	0%	0%	0%	0%	0%
							grade 2 events	6765	7238	6596	5748	6684	29498
								2%	2%	2%	2%	2%	9%
							grade 3 events	3107	3383	2872	2893	3022	12889
								1%	1%	0%	1%	1%	4%
							grade 4 events	2798	3193	2908	2819	3070	12986
								1%	1%	0%	1%	1%	4%
							grade 5 events	9961	10749	9546	11483	11711	32954
								3%	4%	3%	4%	4%	10%
							grade 6 events	5414	6251	5203	5446	6335	74800
								2%	2%	1%	1%	2%	23%
							grade 7 events	220933	220589	255597	238776	248347	137860
								85%	83%	87%	86%	85%	43%

2.2 Compared Parameters

Parameter	Planned	Actual	Parameter	Planned	Actual
Instrument	ACIS	ACIS	Obspar format version number	7	7
Detector	ACIS-012367	ACIS-012367	Obspar file type	PREDICTED	ACTUAL
Grating	NONE	NONE	Obspar update status	NONE	UPDATED
Data mode	VFAINT	VFAINT	CCD I0 on	Y	Y
Observation mode	POINTING	POINTING	CCD I1 on	Y	Y
[deg] Pointing RA	85.759250	85.83489577722194	CCD I2 on	Y	Y
[deg] Pointing Dec	69.498183	69.4908135772357	CCD I3 on	Y	Y
[deg] Pointing Roll	314.051847	314.1896736535477	CCD S0 on	N	N
[mm] SIM focus pos	-0.782348	-0.7809083437167272	CCD S1 on	N	N
[mm] SIM defocus	0	0.001439871863259334	CCD S2 on	O1	Y
[mm] SIM translation stage pos	-233.592463	-233.5874344608287	CCD S3 on	Y	Y
[mm] SIM translation stage offset	0	-0.005018542100998502	CCD S4 on	N	N
[s] Observation start time (MET)	358379719.184000	358378703.47997	CCD S5 on	N	N
Observation start date	2009-05-10T21:54:13	2009-05-10T21:38:23	Number of optional ACIS chips dropped	0	0
[s] Observation end time (MET)	358411719.184000	358411852.49412	On-chip summing requested	N	N
Observation end date	2009-05-11T06:47:33	2009-05-11T06:50:52	Subarray requested	NONE	NONE
Read mode	TIMED	TIMED	Alternating exposures requested	N	N
			[s] Primary exposure time	0.000000	3.2

2.3 Aspect



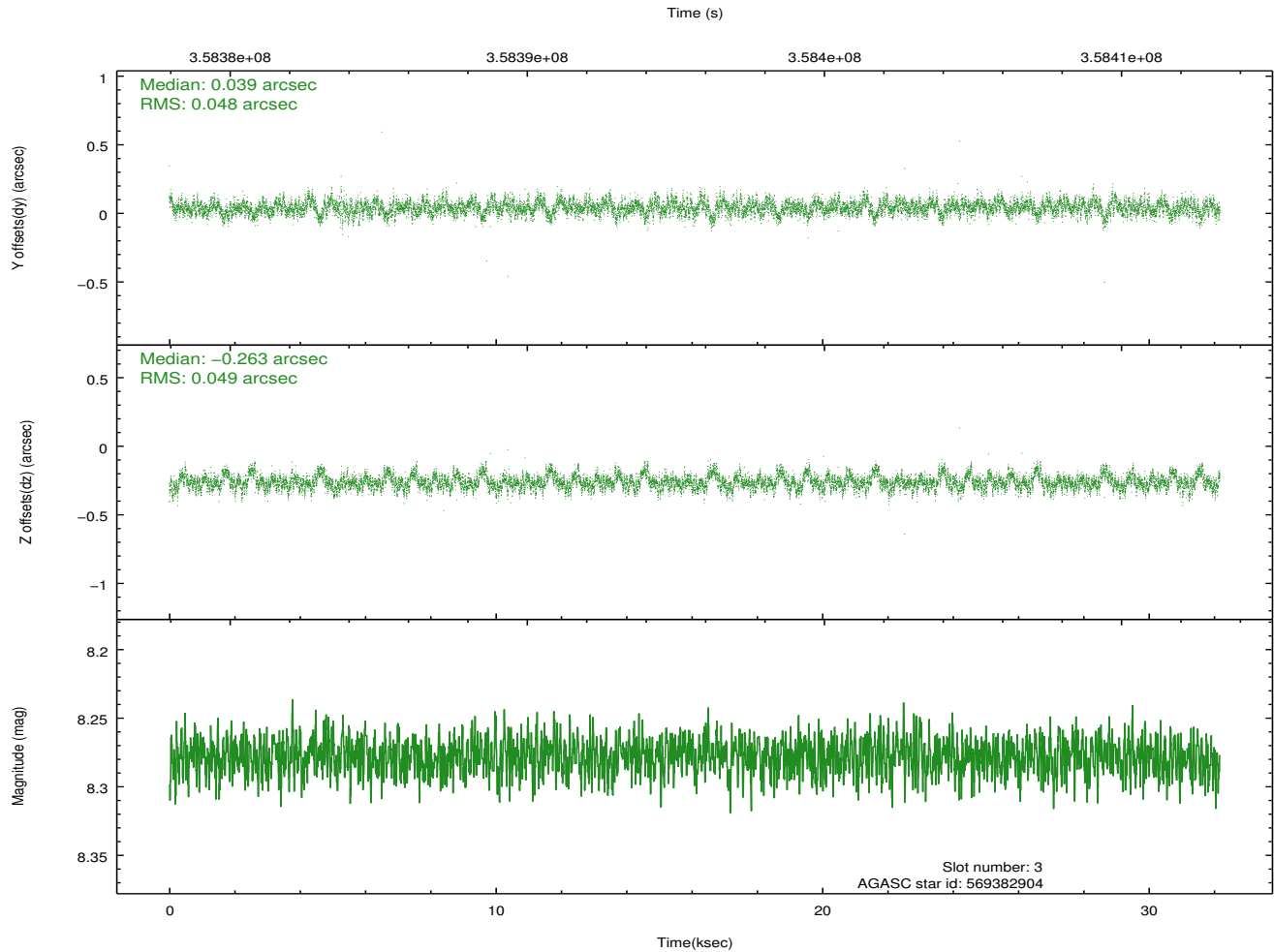
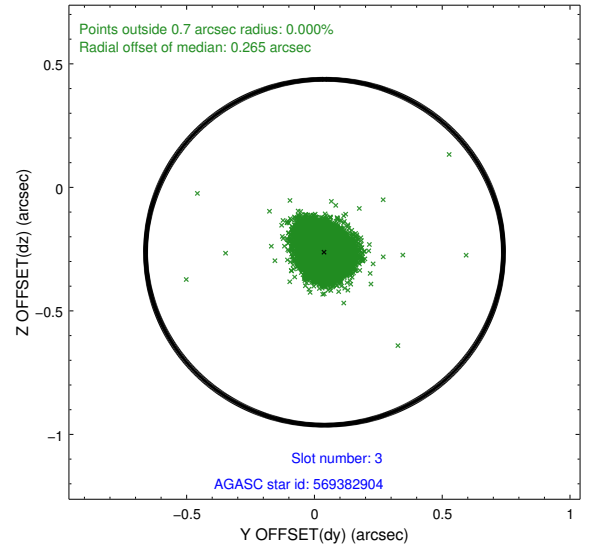
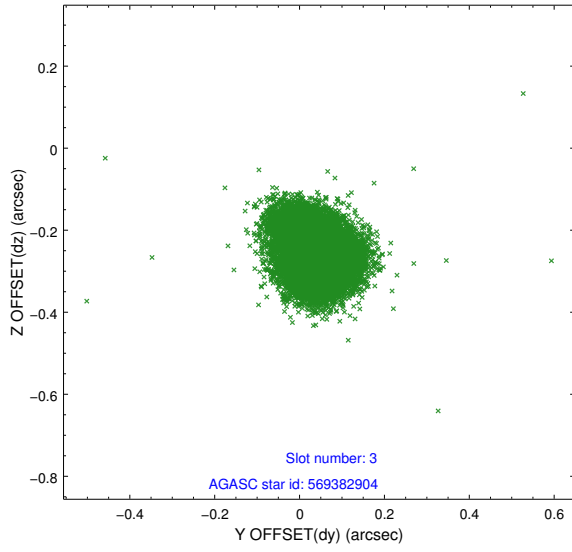


Slot Statistics

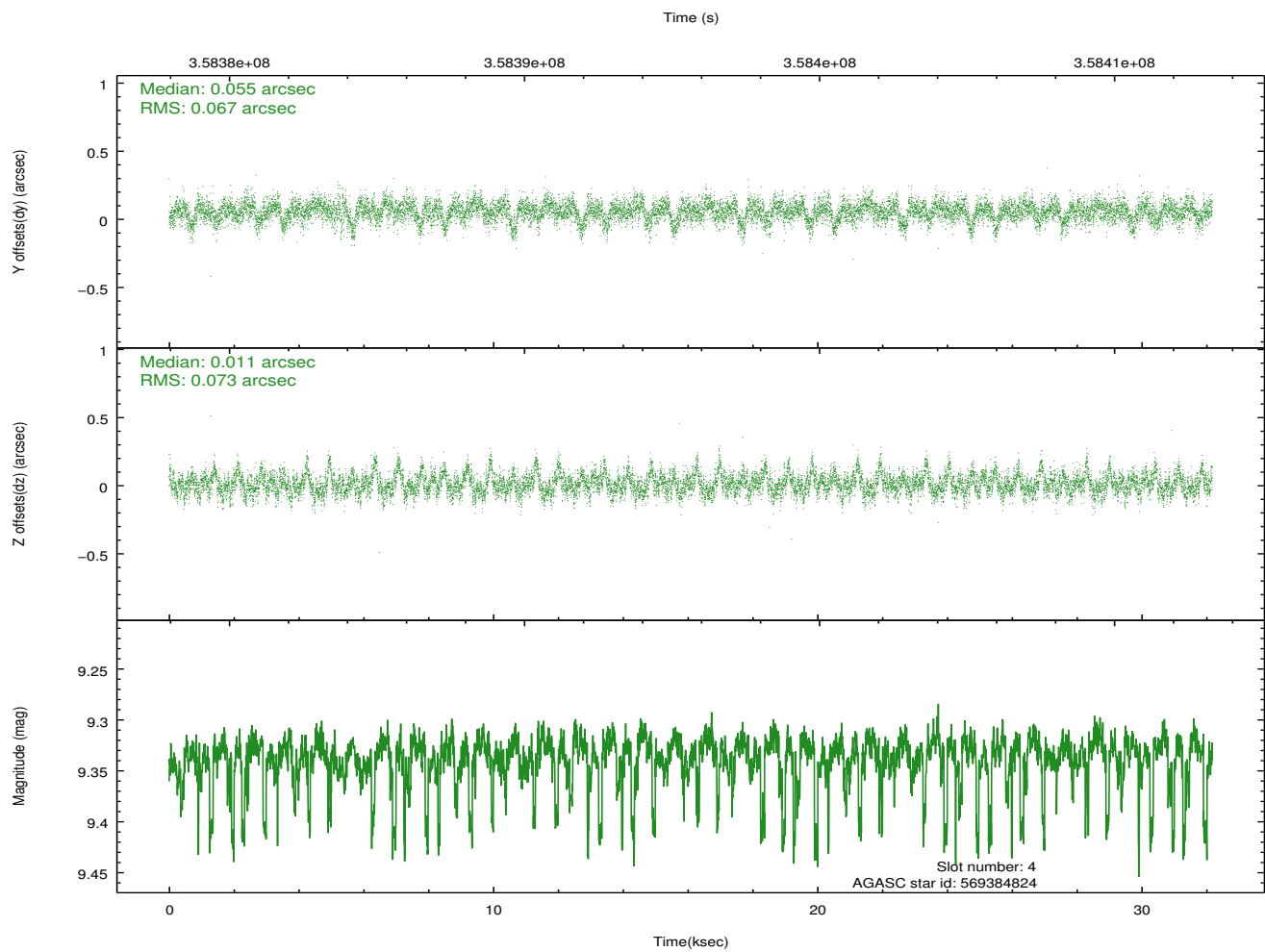
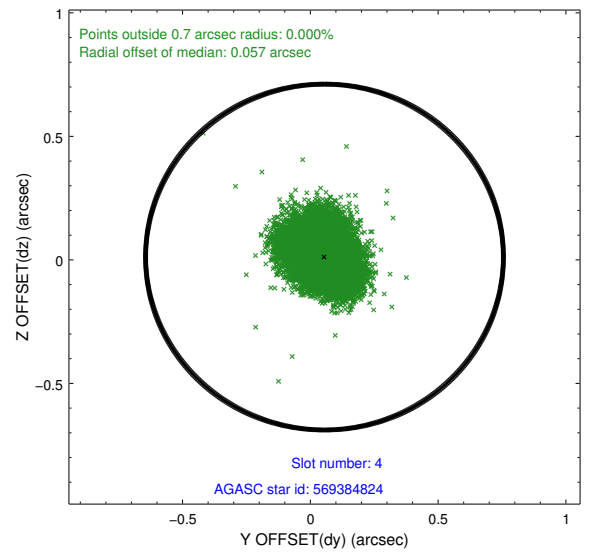
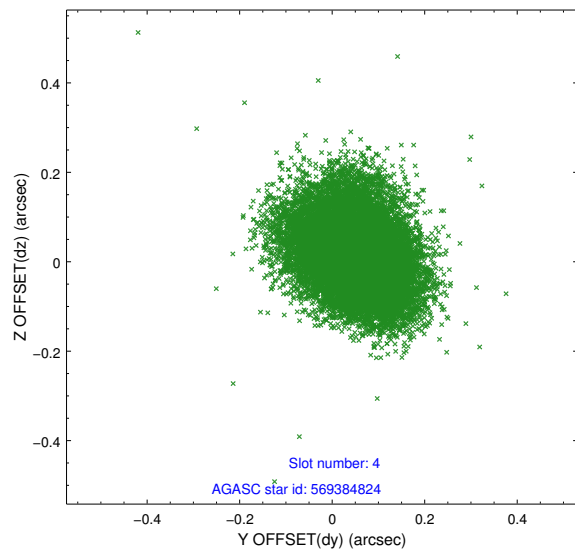
slot	status	id	mag	n_pts	med_dy	med_dz	dr1	dr2	ra	dec	mean_y	mean_z
0	FID	ACIS-I-1	7.01	7849	0.071	-0.034	0.011	0.017	0.000000	0.000000	924.50	-840.54
1	FID	ACIS-I-5	7.01	7849	-0.230	0.070	0.008	0.018	0.000000	0.000000	-1823.85	1057.06
2	FID	ACIS-I-6	7.02	7849	0.068	0.035	0.014	0.024	0.000000	0.000000	390.01	1701.57
3	GUIDE	569382904	8.28	15686	0.039	-0.263	0.072	0.119	86.395503	69.273356	1142.76	22.69
4	GUIDE	569384824	9.34	15560	0.055	0.011	0.103	0.175	86.214875	69.095669	1447.41	-585.19
5	GUIDE	569385240	9.26	15604	0.028	0.021	0.111	0.180	84.427240	69.101394	-175.36	-2209.47
6	GUIDE	569386616	9.02	15678	0.042	0.130	0.073	0.120	86.116421	68.965835	1697.82	-999.72
7	GUIDE	569907016	6.84	15694	-0.163	0.090	0.061	0.106	85.055781	69.981849	-1857.45	591.14

2.4 Star Slots

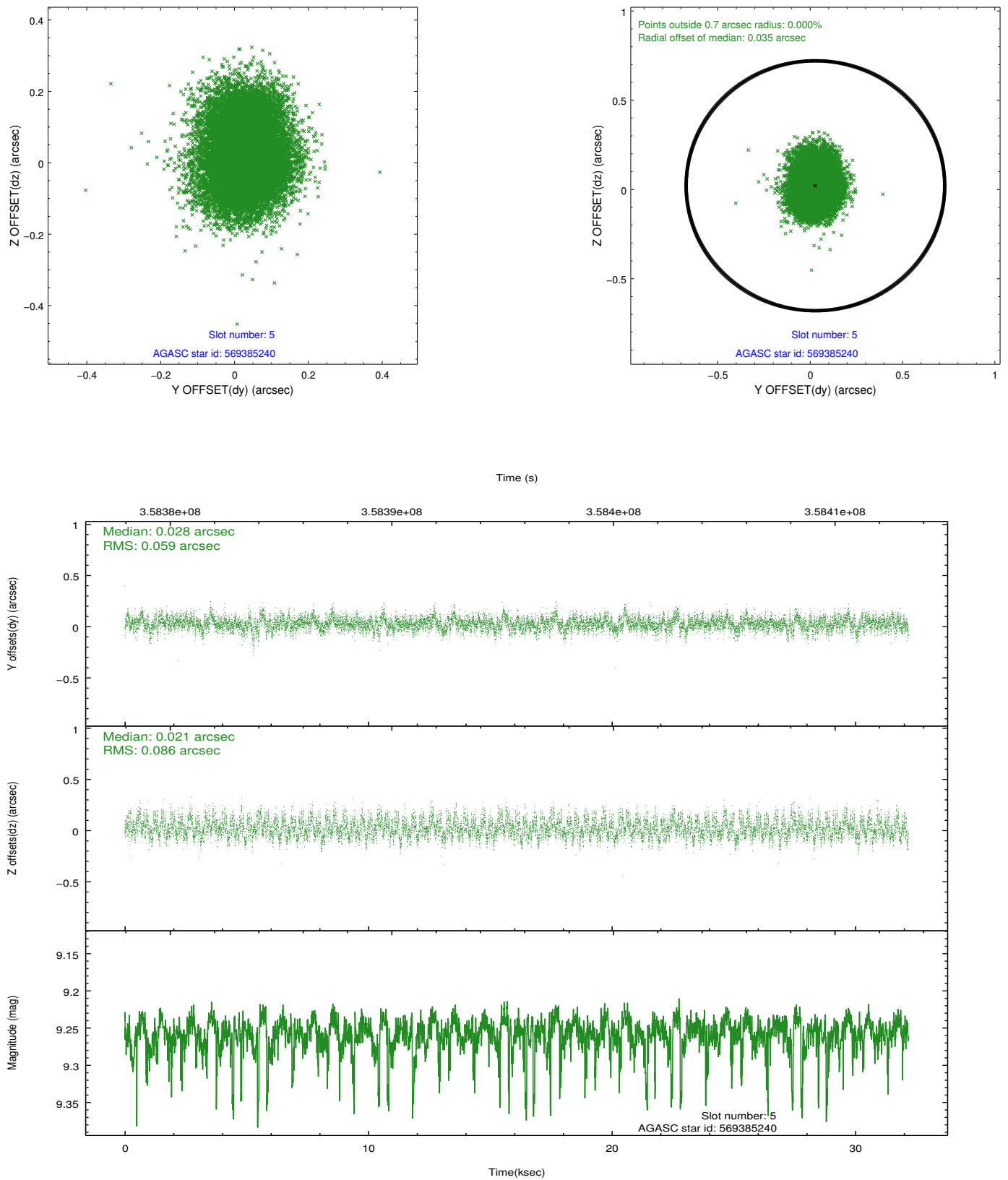
2.4.1 Slot 3



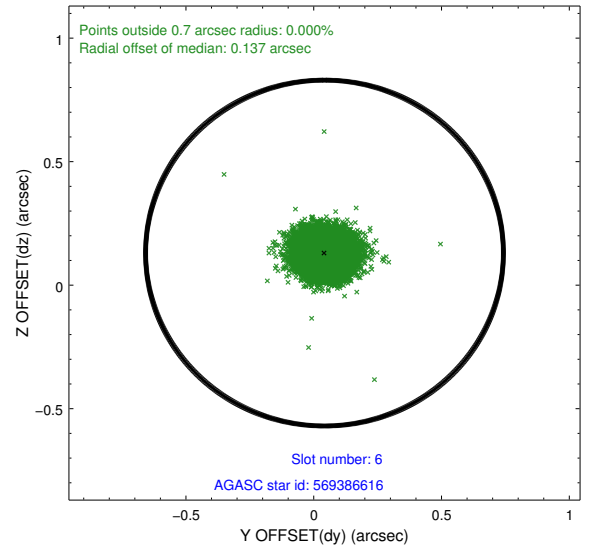
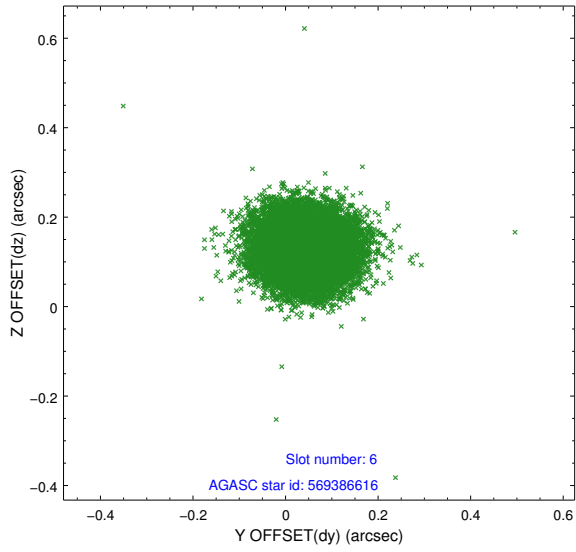
2.4.2 Slot 4



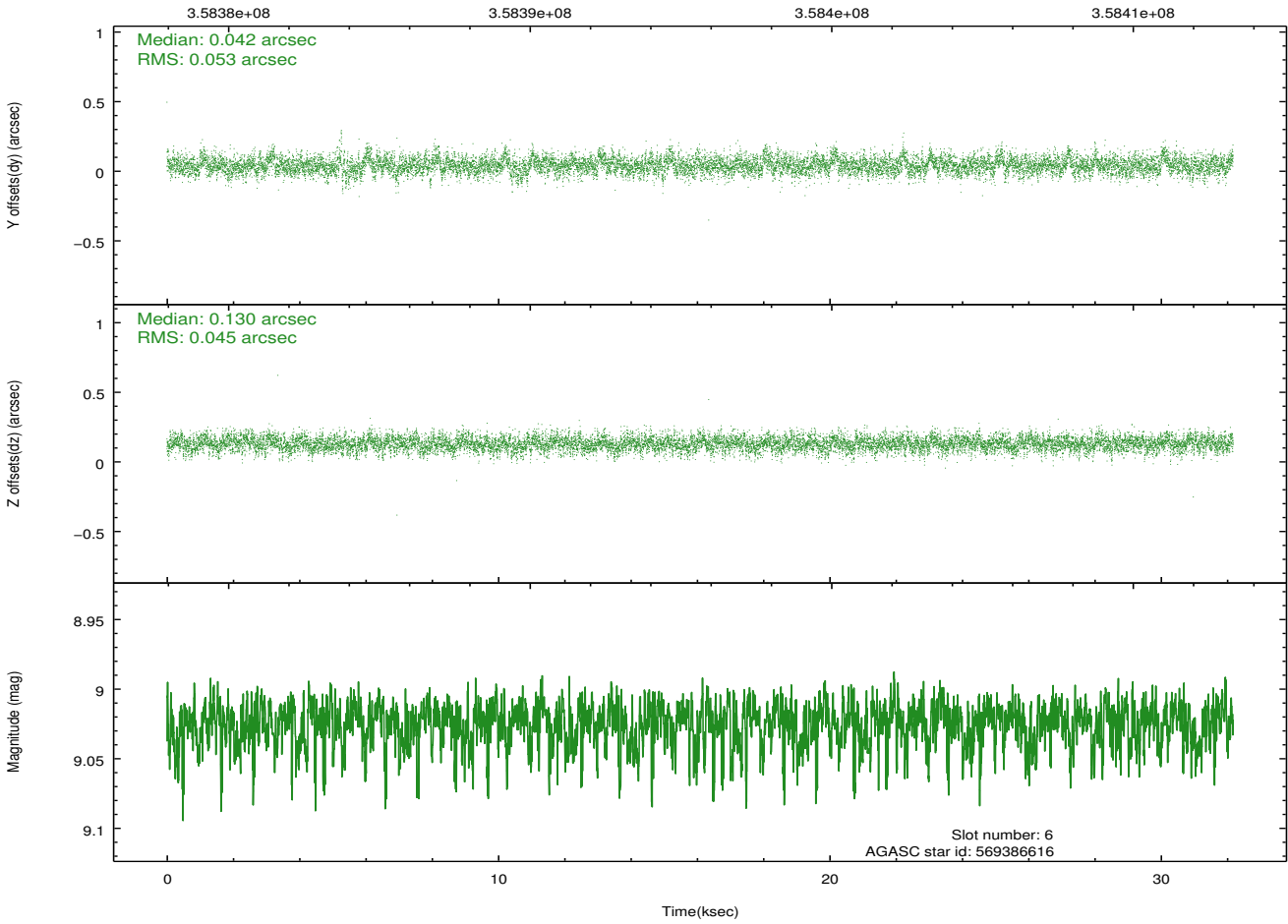
2.4.3 Slot 5



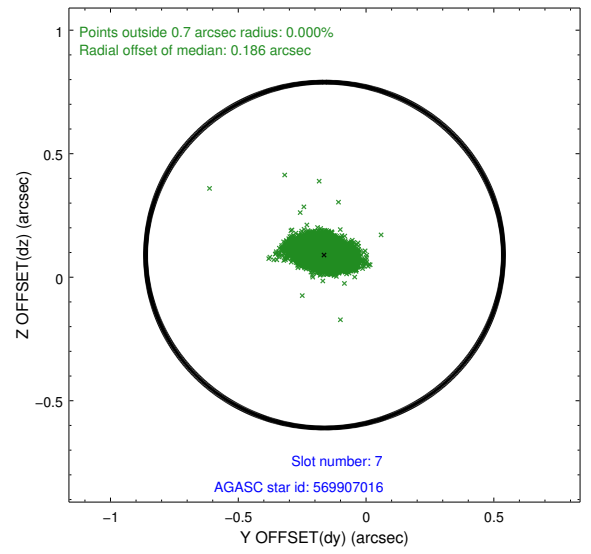
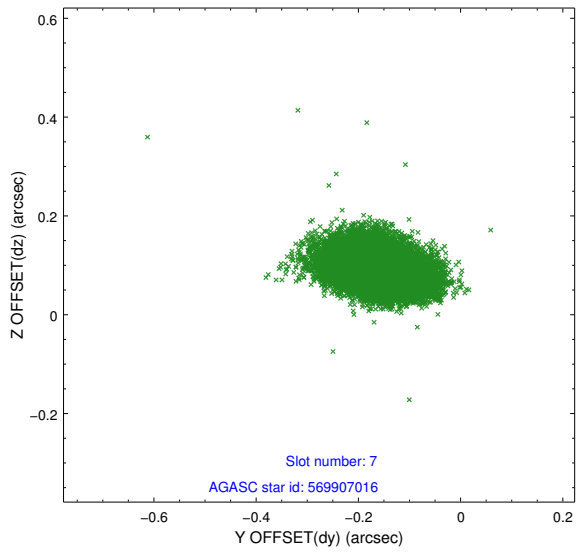
2.4.4 Slot 6



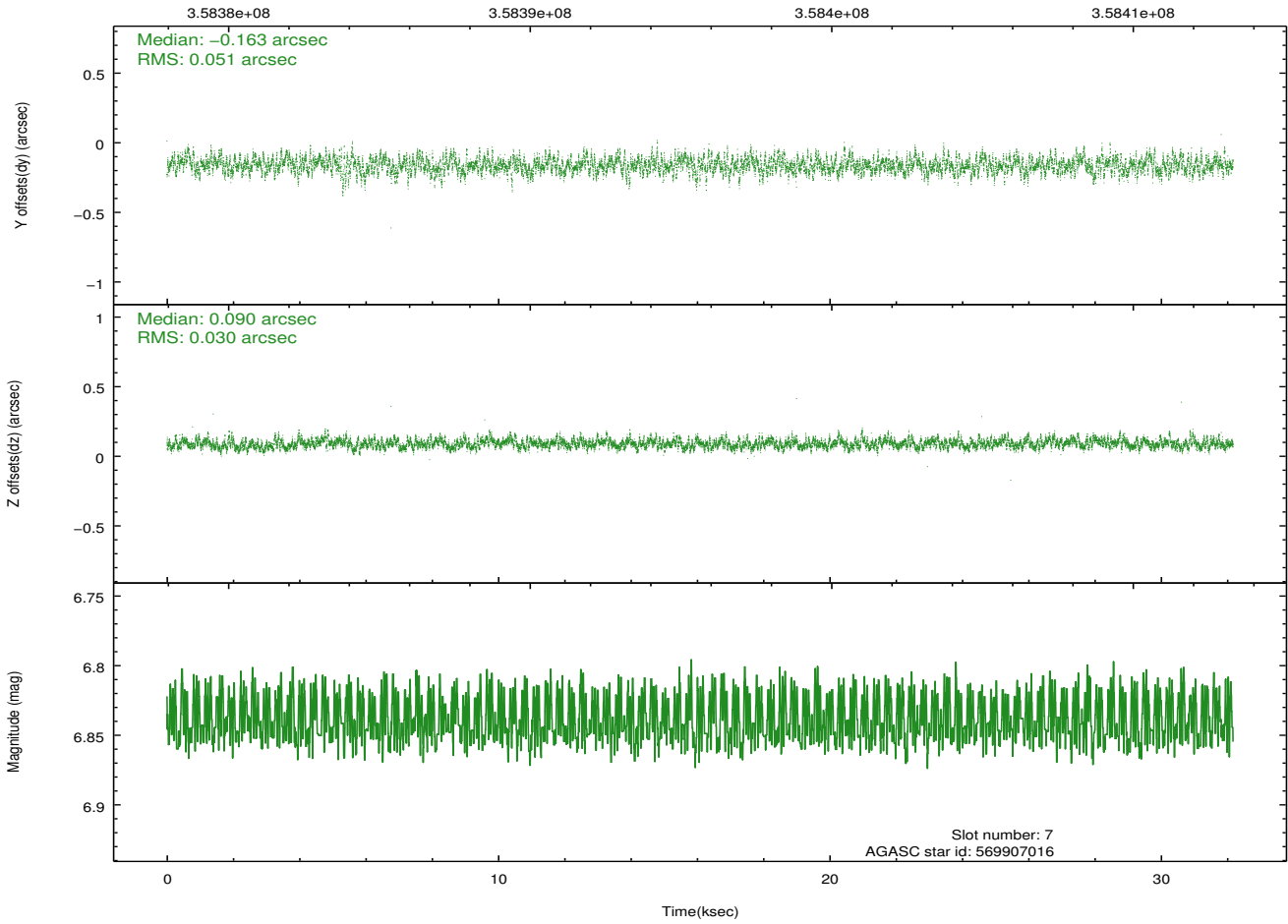
Time (s)



2.4.5 Slot 7

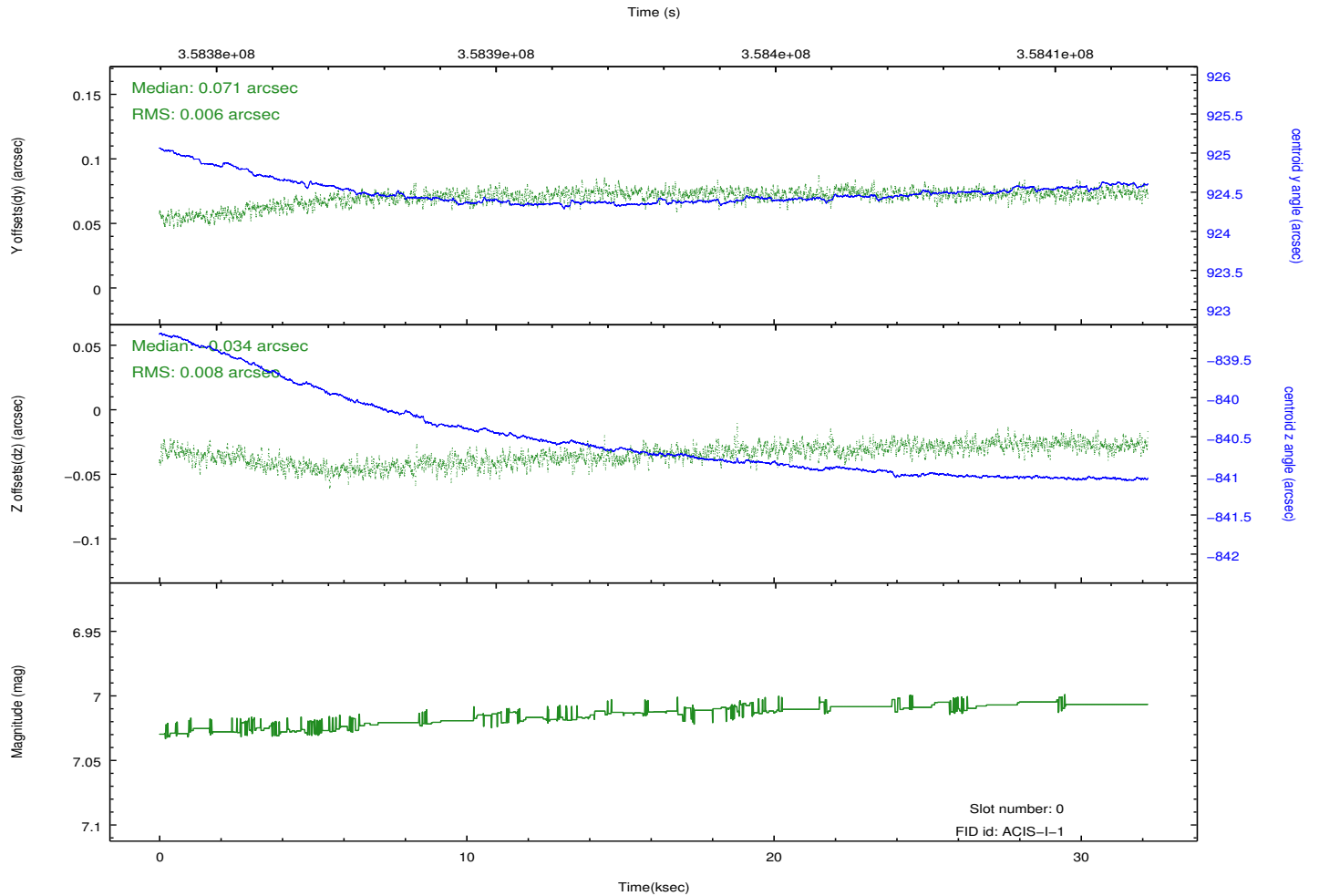
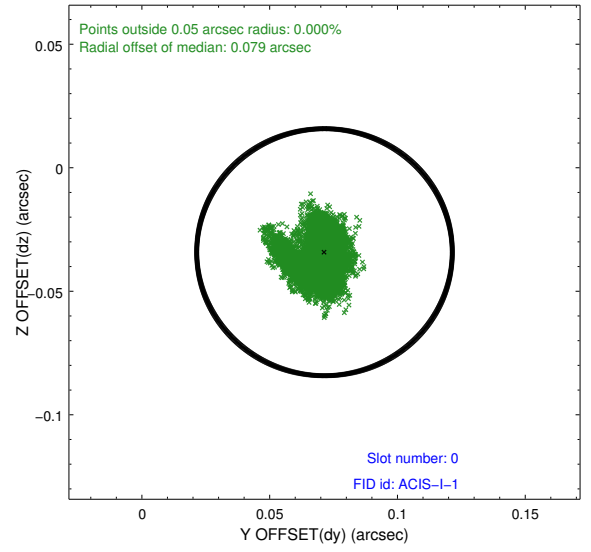
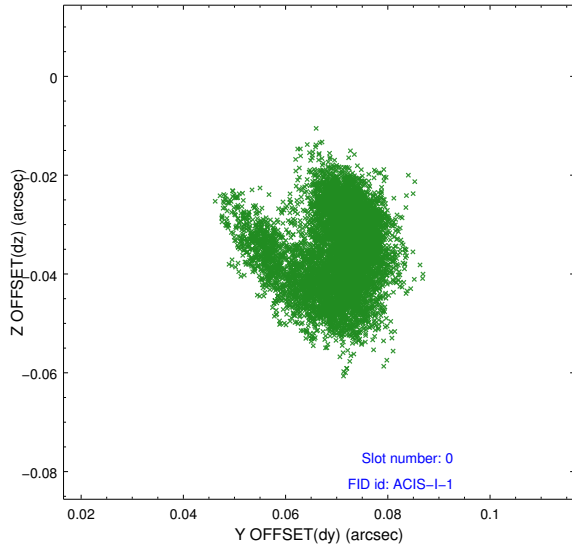


Time (s)

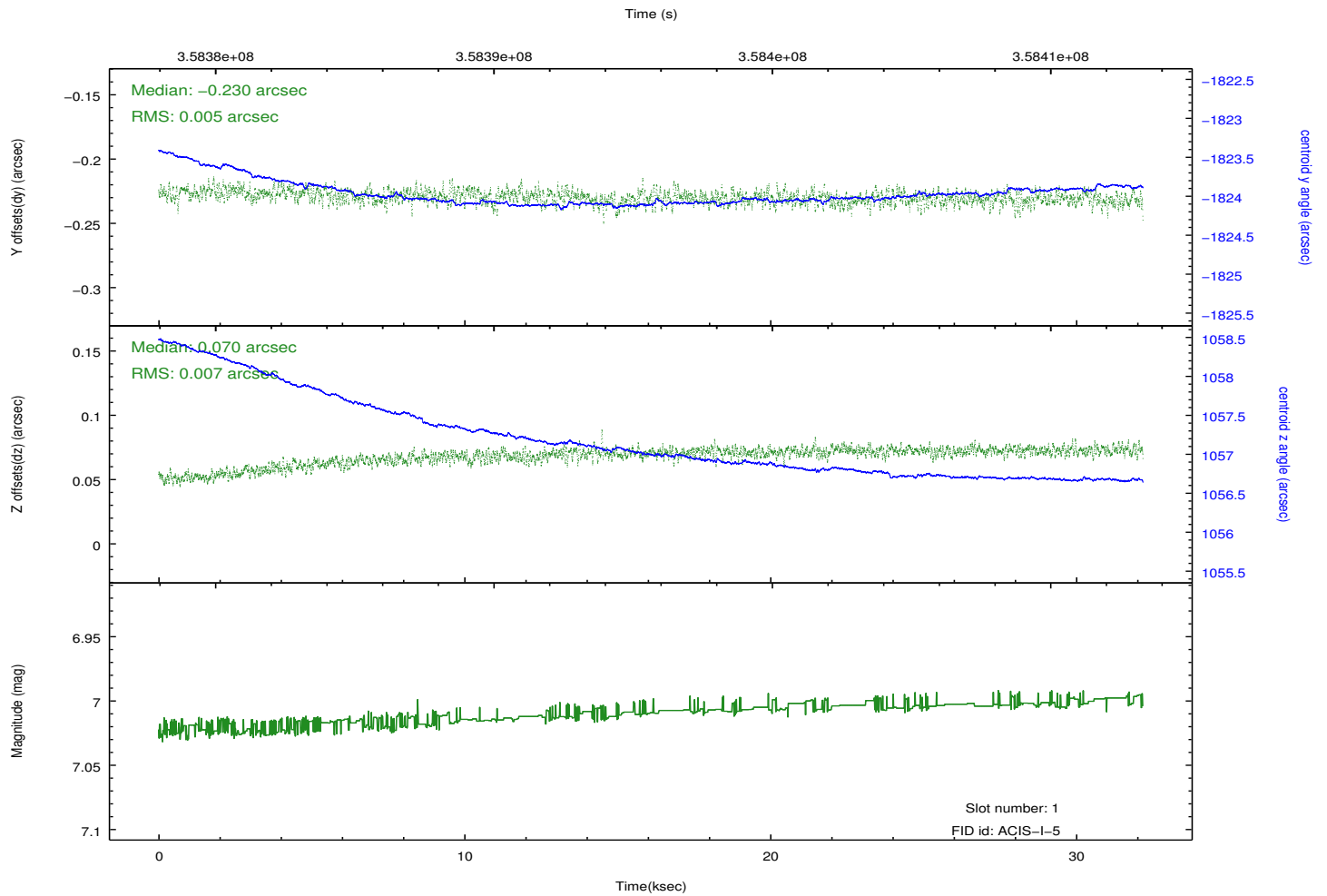
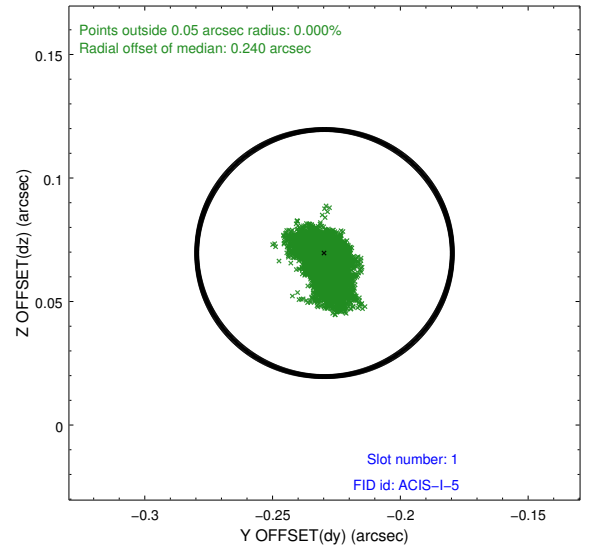
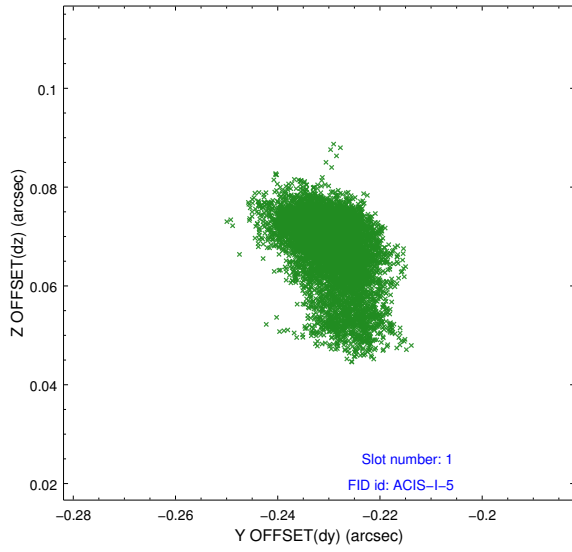


2.5 FID Slots

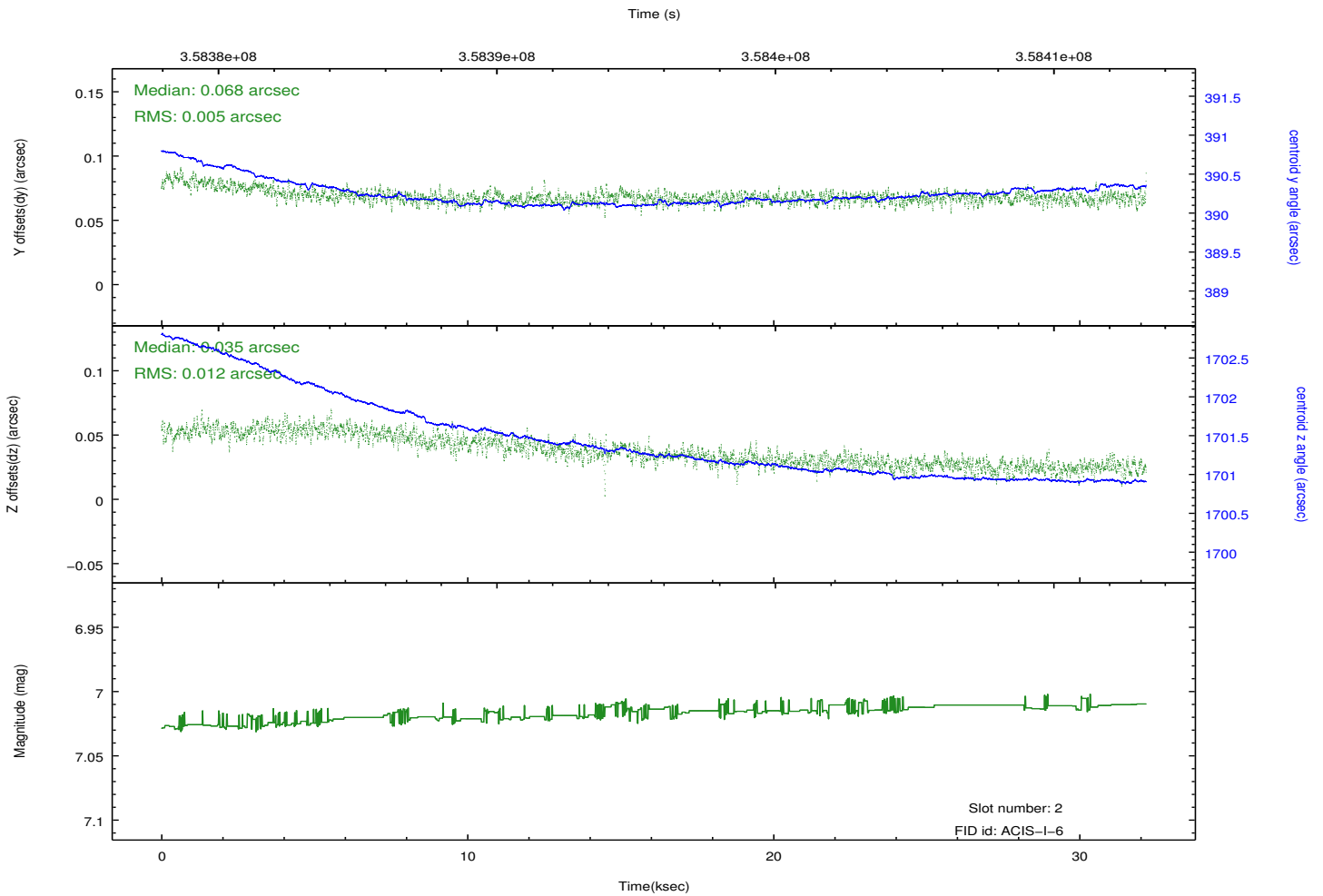
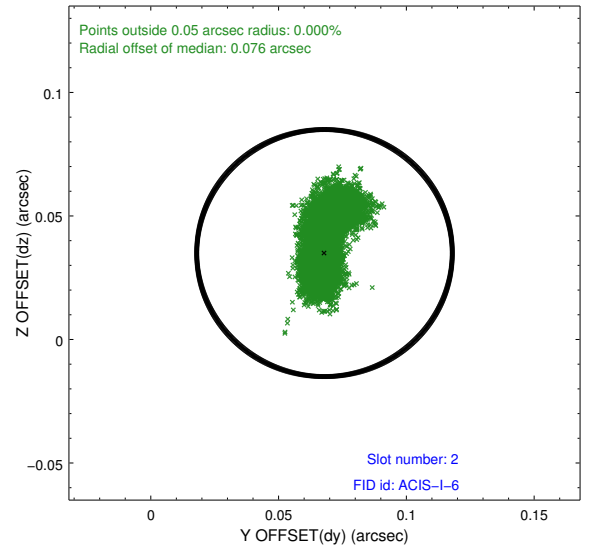
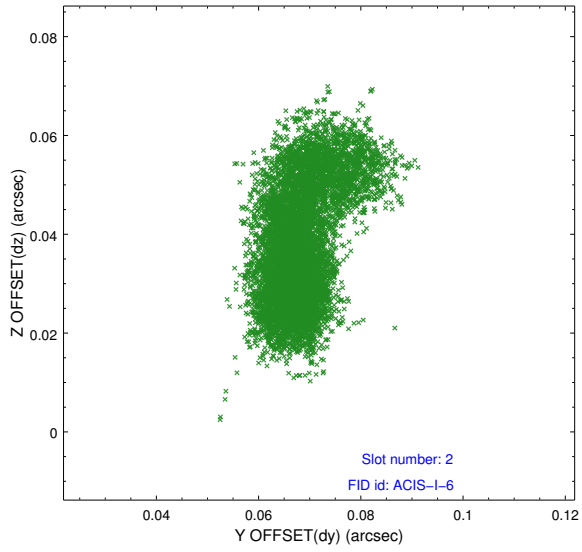
2.5.1 Slot 0



2.5.2 Slot 1



2.5.3 Slot 2



A Summary

A.1 Status

V&V Scientist	Jen Lauer
V&V Date (YYYY-MM-DD)	2012.06.11
V&V Edition	1
V&V Disposition and Status	OK
V&V Charge Time	32.0543998

A.2 Comments