

V&V Reference Report

L2 ASCDS Version : 8.4.5

Observation 10728 - L2 Version 2
Chandra X-Ray Center

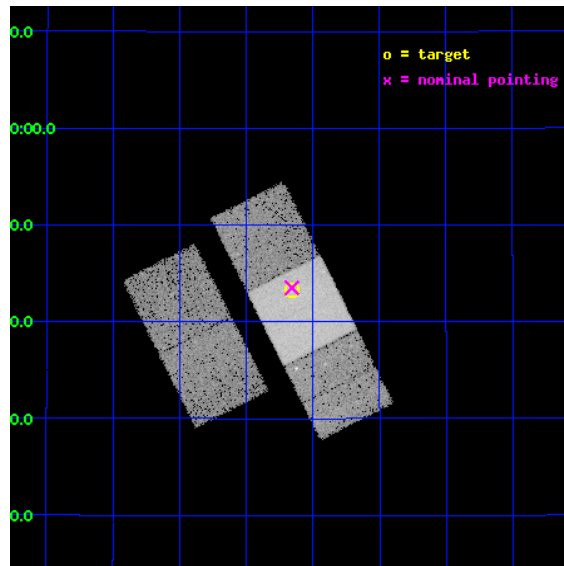
L2 Processing Date : Jun 14 2012

Contents

1	Front	2
2	OBI	3
2.1	OBI	3
2.1.1	Images	3
2.1.2	Bias	3
2.1.3	Parameters	4
2.1.4	Events	4
2.2	Compared Parameters	5
2.3	Aspect	6
2.4	Star Slots	9
2.4.1	Slot 3	9
2.4.2	Slot 4	10
2.4.3	Slot 5	11
2.4.4	Slot 6	12
2.4.5	Slot 7	13
2.5	FID Slots	14
2.5.1	Slot 0	14
2.5.2	Slot 1	15
2.5.3	Slot 2	16
A	Summary	17
A.1	Status	17
A.2	Comments	17

1 Front

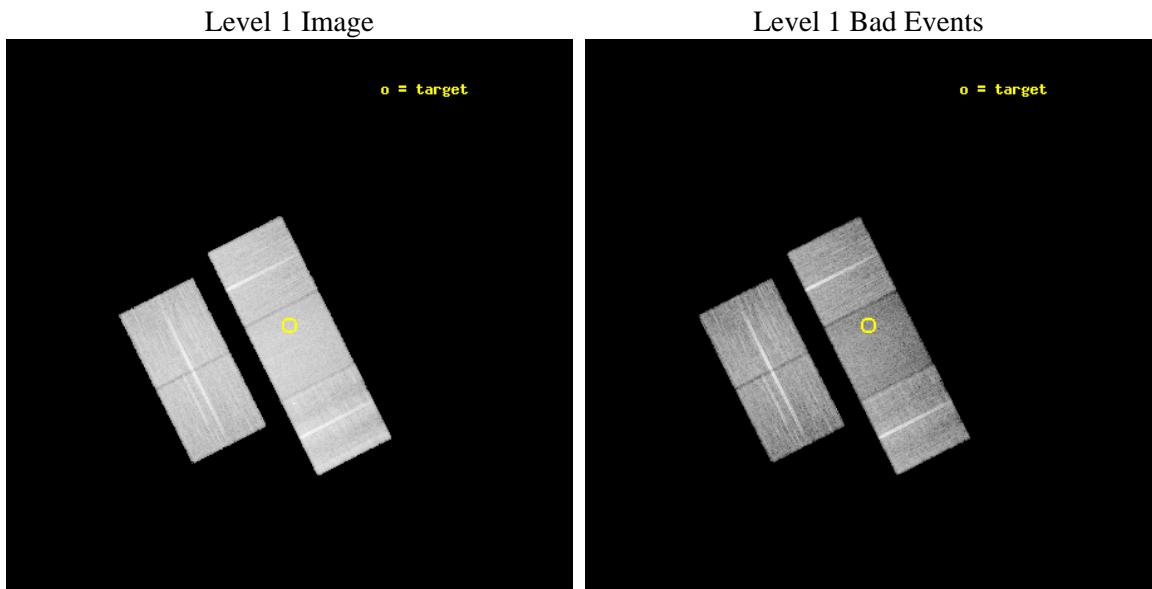
seq_num	701958	Sequence number
obs_id	10728	Observation id
title	Flaring galaxies with strong emission-line light echo	Proposal tit
observer	Dr. Peter Predehl	Principal investigator
object	SDSSJ095209.56+214313.3	Source name
dtycycle	0	
cycle	P	events from which exps? Prim/Second/Both
ra_targ	148.04	Observer's specified target RA [deg]
dec_targ	21.720361	Observer's specified target Dec [deg]
ra_nom	148.03956351713	Nominal RA [deg]
dec_nom	21.725189927286	Nominal Dec [deg]
roll_nom	63.298224349639	Nominal Roll [deg]
revision	2	Processing version of data
ontime	17161.600131989	Sum of GTIs [s]
livetime	16937.371192078	Livetime [s]
ontime2	17161.600131989	Sum of GTIs [s]
ontime3	17158.459141672	Sum of GTIs [s]
ontime6	17161.600131989	Sum of GTIs [s]
ontime7	17161.600131989	Sum of GTIs [s]
ontime8	17161.600131989	Sum of GTIs [s]
l2events	129688	Number of level 2 events



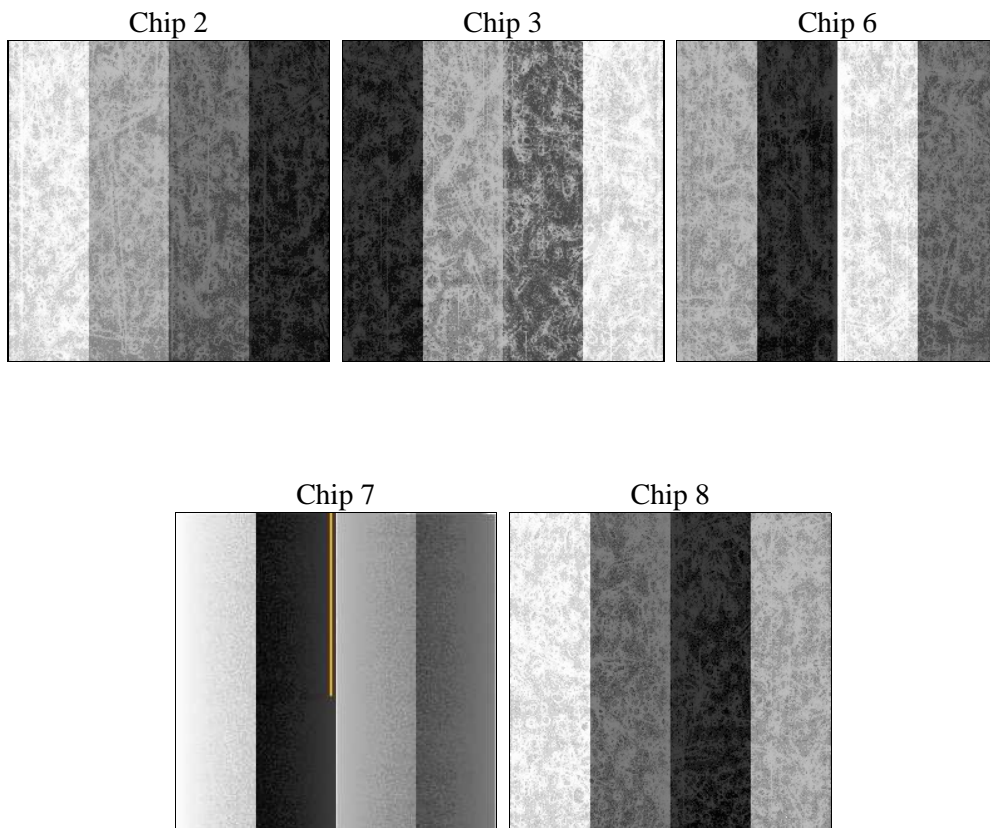
2 OBI

2.1 OBI

2.1.1 Images



2.1.2 Bias



2.1.3 Parameters

obi_num	0	Obi number	sched_exp_time	17000.000000	[s] Scheduled observation exposure time
ascdsver	8.4.5	Processing system revision	ontime	17161.600131989	Sum of GTIs [s]
caldbver	4.4.10	 	ontime2	17161.600131989	Sum of GTIs [s]
date	2012-06-14T13:38:28	Date and time of file creation	ontime3	17158.459141672	Sum of GTIs [s]
revision	2	Processing version of data	ontime6	17161.600131989	Sum of GTIs [s]
			ontime7	17161.600131989	Sum of GTIs [s]
			ontime8	17161.600131989	Sum of GTIs [s]
			l1events	826545	Number of level 1 events

2.1.4 Events

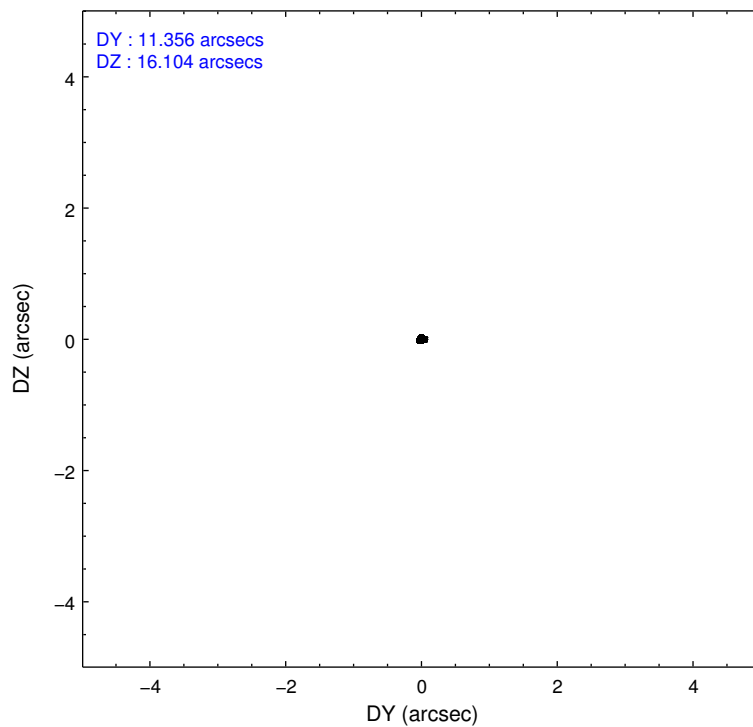
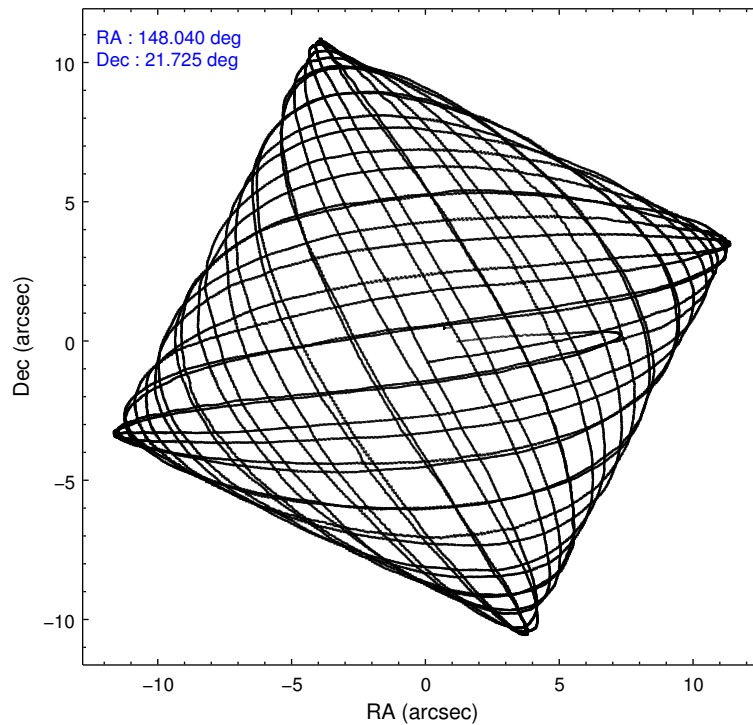
	ccd 2	ccd 3	ccd 6	ccd 7	ccd 8
level 1 events	158892	145773	156104	173387	192389
rejected events	144304	131846	140422	96416	142955
rejected %	90%	90%	89%	55%	74%

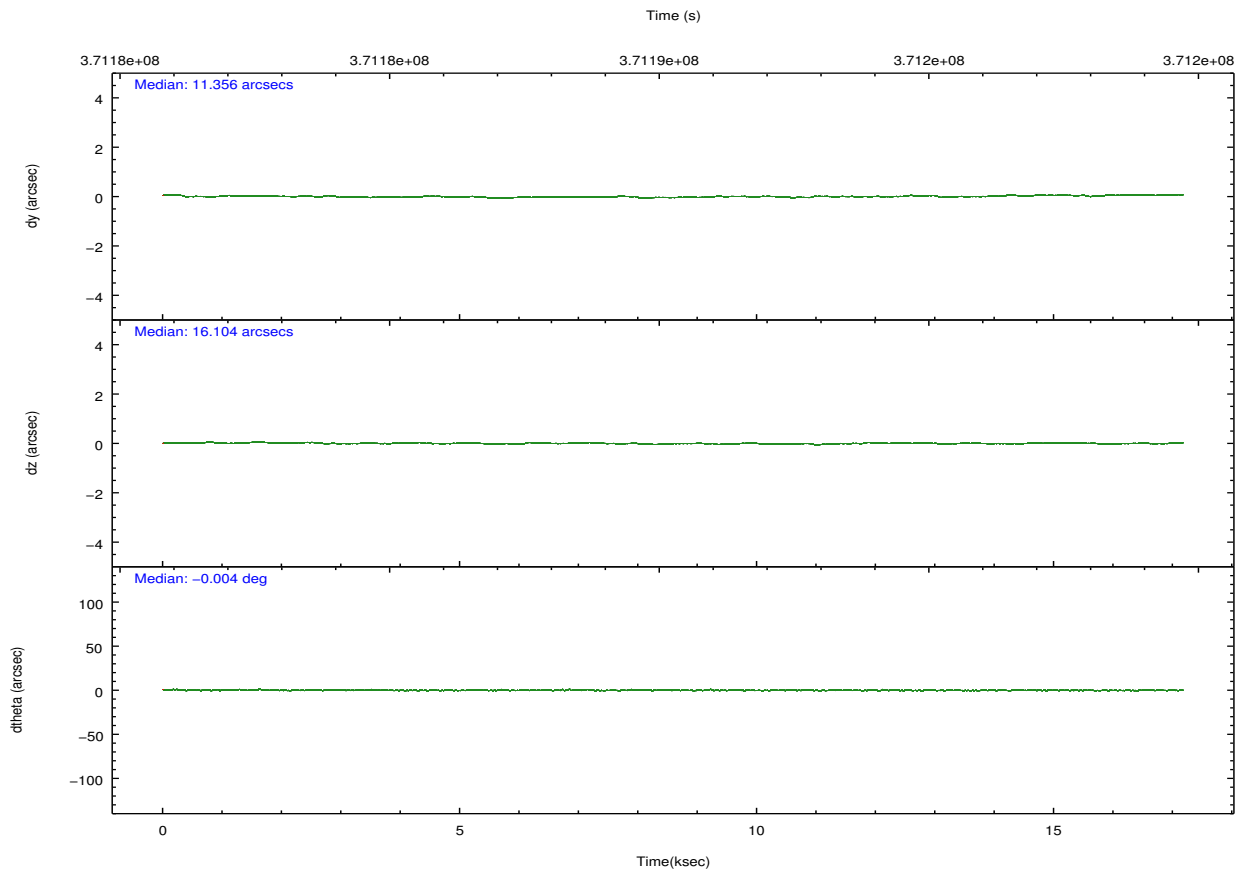
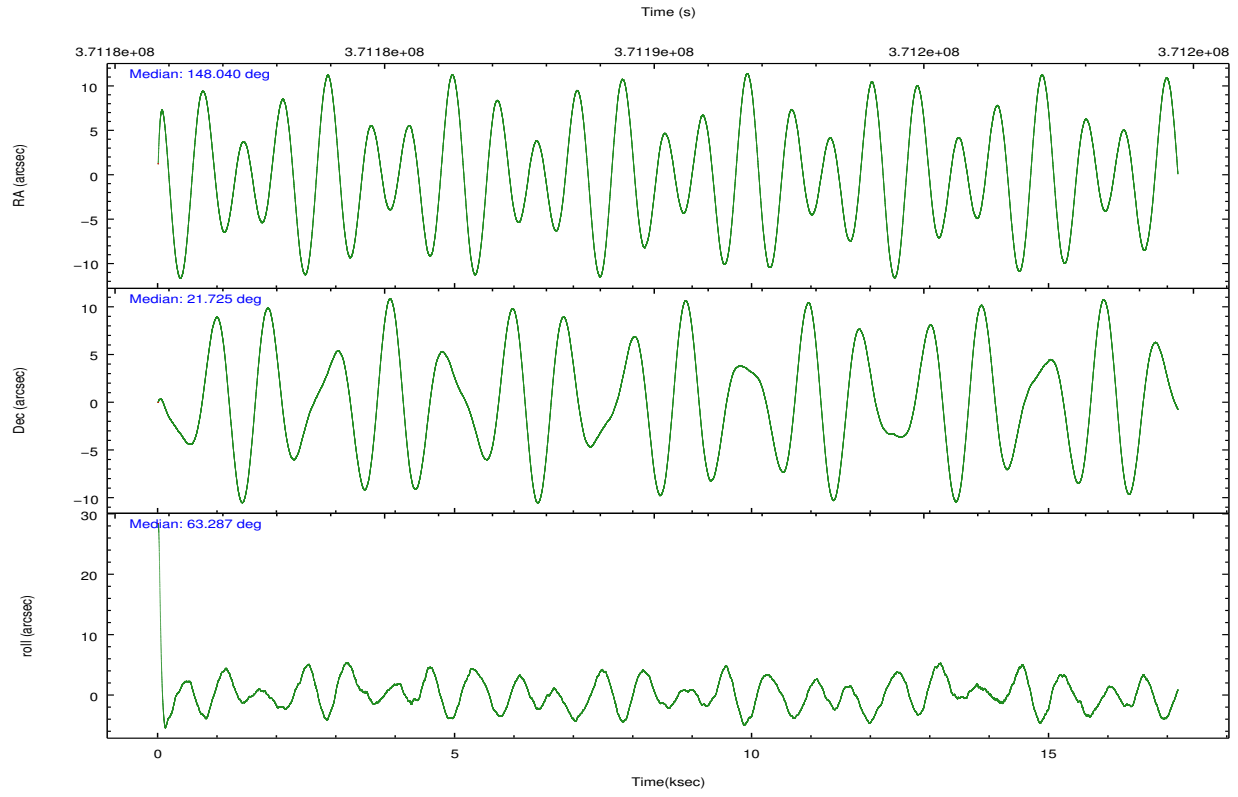
	ccd 2	ccd 3	ccd 6	ccd 7	ccd 8
grade 0 events	5283	4912	5420	7318	15912
	3%	3%	3%	4%	8%
grade 1 events	72	84	90	240	177
	0%	0%	0%	0%	0%
grade 2 events	3620	3126	3719	16194	11476
	2%	2%	2%	9%	5%
grade 3 events	1534	1625	1686	6965	5461
	0%	1%	1%	4%	2%
grade 4 events	1654	1588	1672	6853	4910
	1%	1%	1%	3%	2%
grade 5 events	5119	6125	6455	18326	9189
	3%	4%	4%	10%	4%
grade 6 events	2811	2988	3543	41312	12665
	1%	2%	2%	23%	6%
grade 7 events	138799	125325	133519	76179	132599
	87%	85%	85%	43%	68%

2.2 Compared Parameters

Parameter	Planned	Actual	Parameter	Planned	Actual
Instrument	ACIS	ACIS	Obspar format version number	7	7
Detector	ACIS-23678	ACIS-23678	Obspar file type	PREDICTED	ACTUAL
Grating	NONE	NONE	Obspar update status	NONE	UPDATED
Data mode	FAINT	FAINT	CCD I0 on	N	N
Observation mode	POINTING	POINTING	CCD I1 on	N	N
[deg] Pointing RA	148.041643	148.039563517125	CCD I2 on	O2	Y
[deg] Pointing Dec	21.697912	21.72518992728622	CCD I3 on	O3	Y
[deg] Pointing Roll	63.140812	63.29822434963907	CCD S0 on	N	N
[mm] SIM focus pos	-0.684267	-0.6828225247311905	CCD S1 on	O1	N
[mm] SIM defocus	0	0.001444936568705701	CCD S2 on	O4	Y
[mm] SIM translation stage pos	-190.132523	-190.1400660498719	CCD S3 on	Y	Y
[mm] SIM translation stage offset	0	0.00754346686406393	CCD S4 on	O5	Y
[s] Observation start time (MET)	371181842.184000	371180662.50799	CCD S5 on	N	N
Observation start date	2009-10-06T02:02:56	2009-10-06T01:44:22	Number of optional ACIS chips dropped	1	1
[s] Observation end time (MET)	371198842.184000	371199817.70895	On-chip summing requested	N	N
Observation end date	2009-10-06T06:46:16	2009-10-06T07:03:37	Subarray requested	NONE	NONE
Read mode	TIMED	TIMED	Alternating exposures requested	N	N
			[s] Primary exposure time	0.000000	3.1

2.3 Aspect



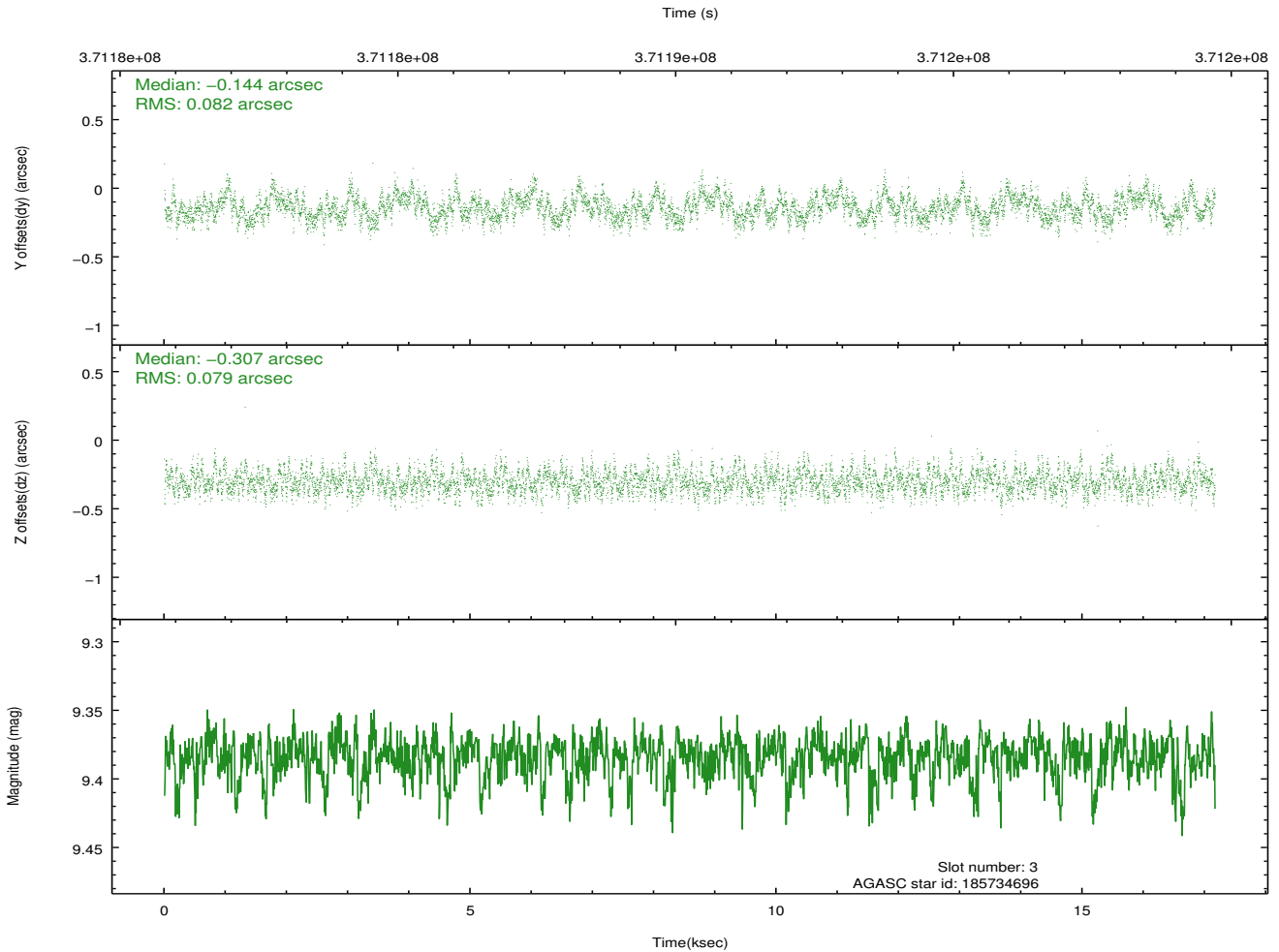
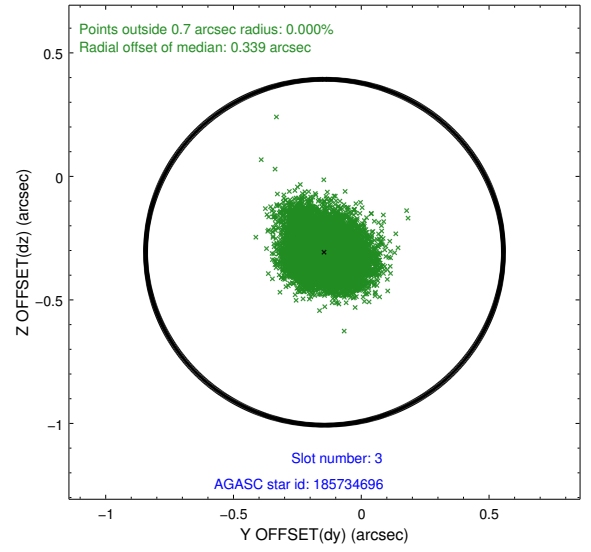
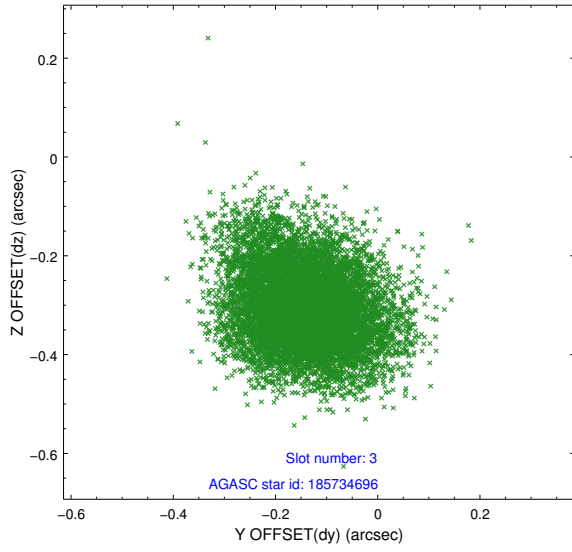


Slot Statistics

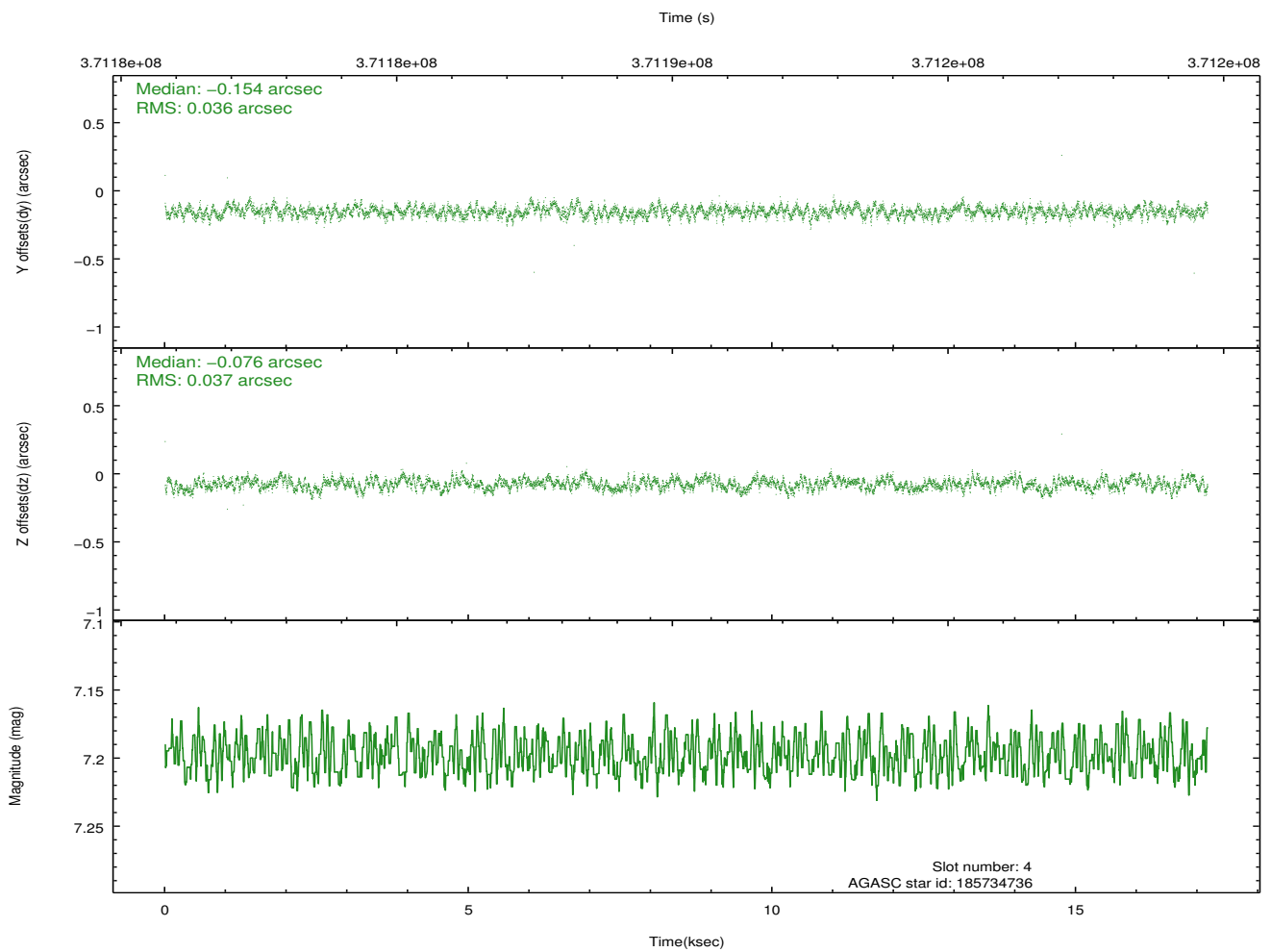
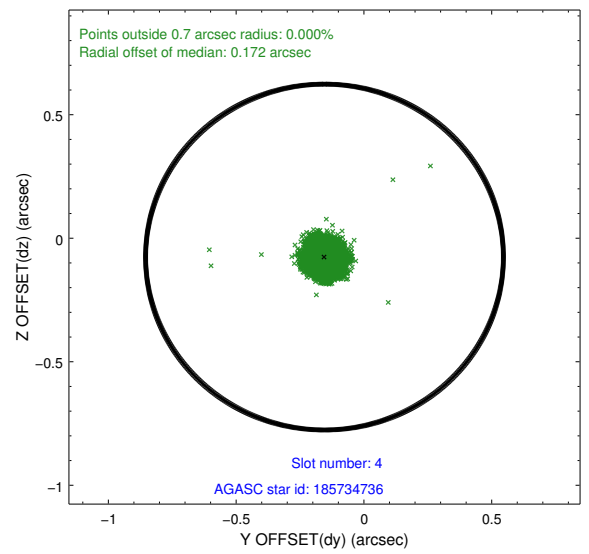
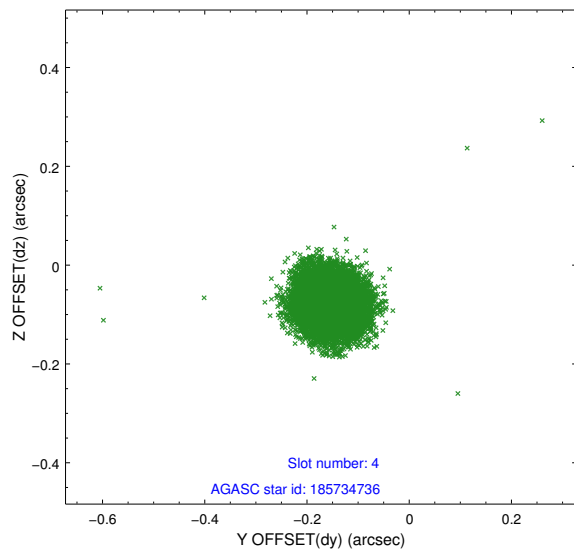
slot	status	id	mag	n_pts	med_dy	med_dz	dr1	dr2	ra	dec	mean_y	mean_z
0	FID	ACIS-S-2	6.86	4188	-0.039	0.006	0.006	0.009	0.000000	0.000000	-764.26	-1737.51
1	FID	ACIS-S-4	6.95	4188	0.092	0.017	0.005	0.009	0.000000	0.000000	2149.03	170.74
2	FID	ACIS-S-5	6.97	4188	-0.085	-0.014	0.006	0.010	0.000000	0.000000	-1816.84	164.64
3	GUIDE	185734696	9.38	8368	-0.144	-0.307	0.122	0.195	147.590211	22.131057	712.67	2048.39
4	GUIDE	185734736	7.20	8375	-0.154	-0.076	0.055	0.084	148.268421	22.123316	1708.64	17.98
5	GUIDE	185735080	9.26	8329	0.152	-0.255	0.126	0.205	147.474948	21.951535	-38.19	2100.67
6	GUIDE	185740088	9.63	8340	0.137	0.296	0.123	0.210	148.610598	21.452588	77.09	-2097.16
7	GUIDE	185739624	9.36	8363	0.010	0.339	0.132	0.229	148.696757	21.408600	67.70	-2427.27

2.4 Star Slots

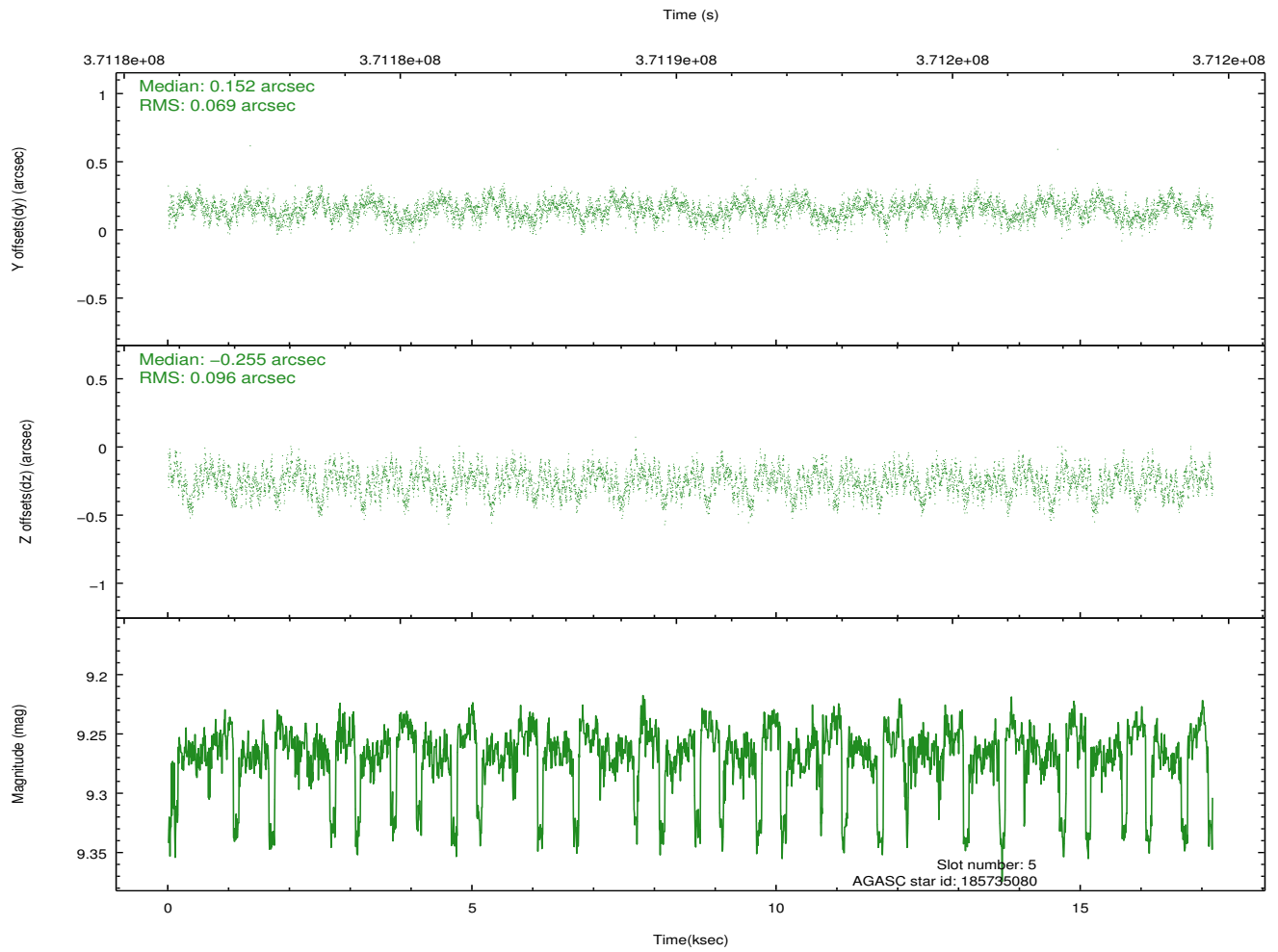
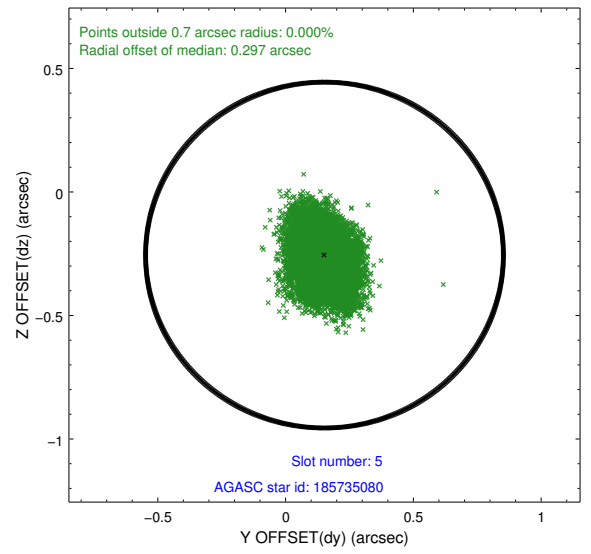
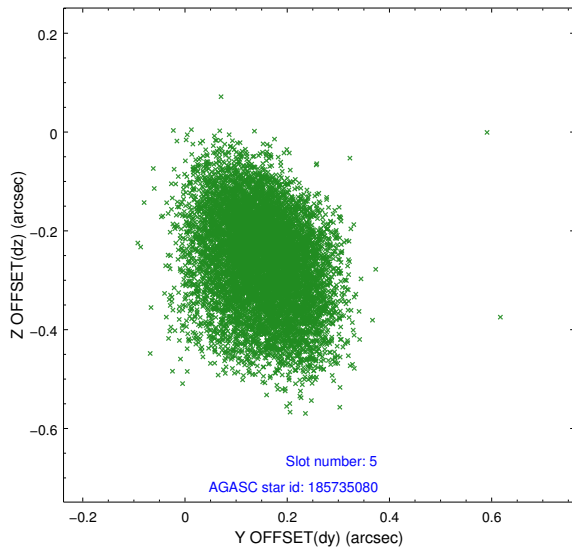
2.4.1 Slot 3



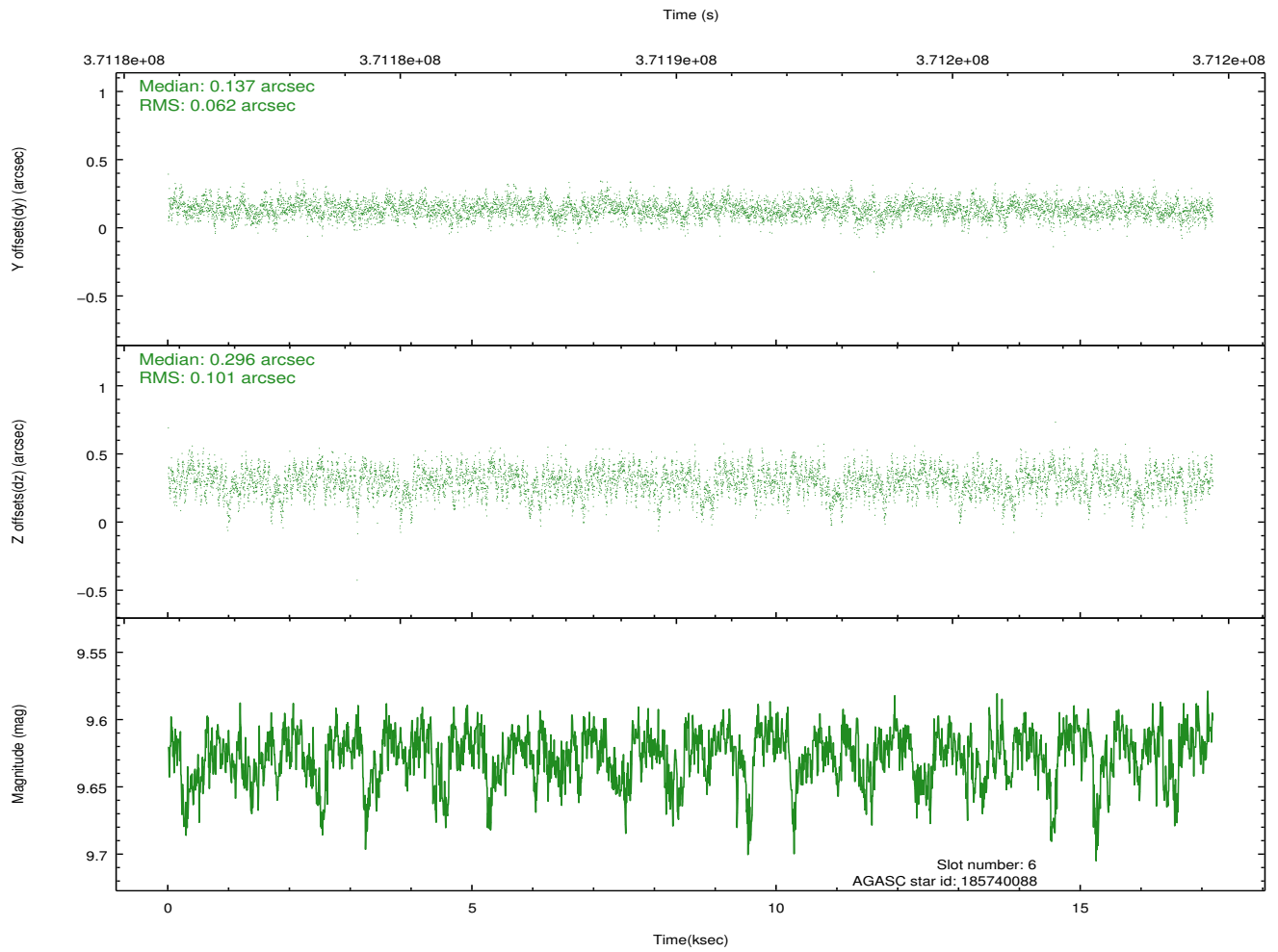
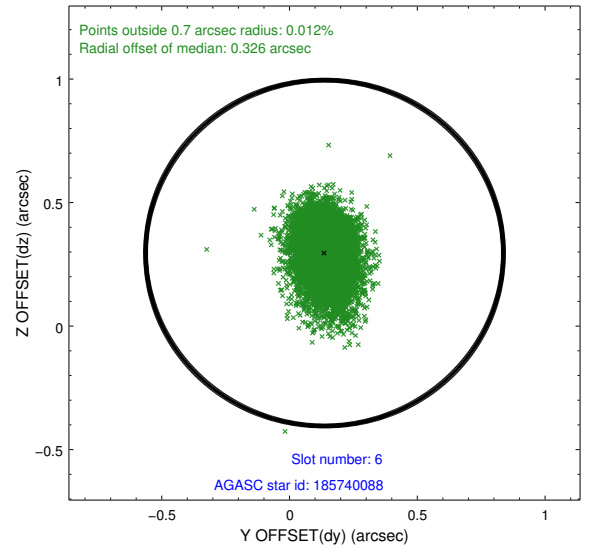
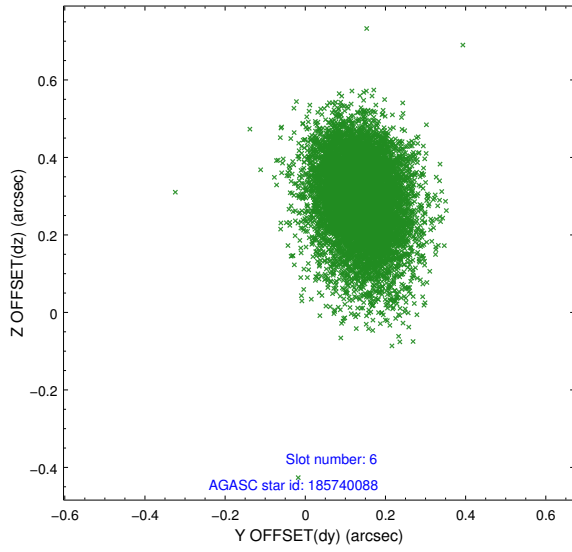
2.4.2 Slot 4



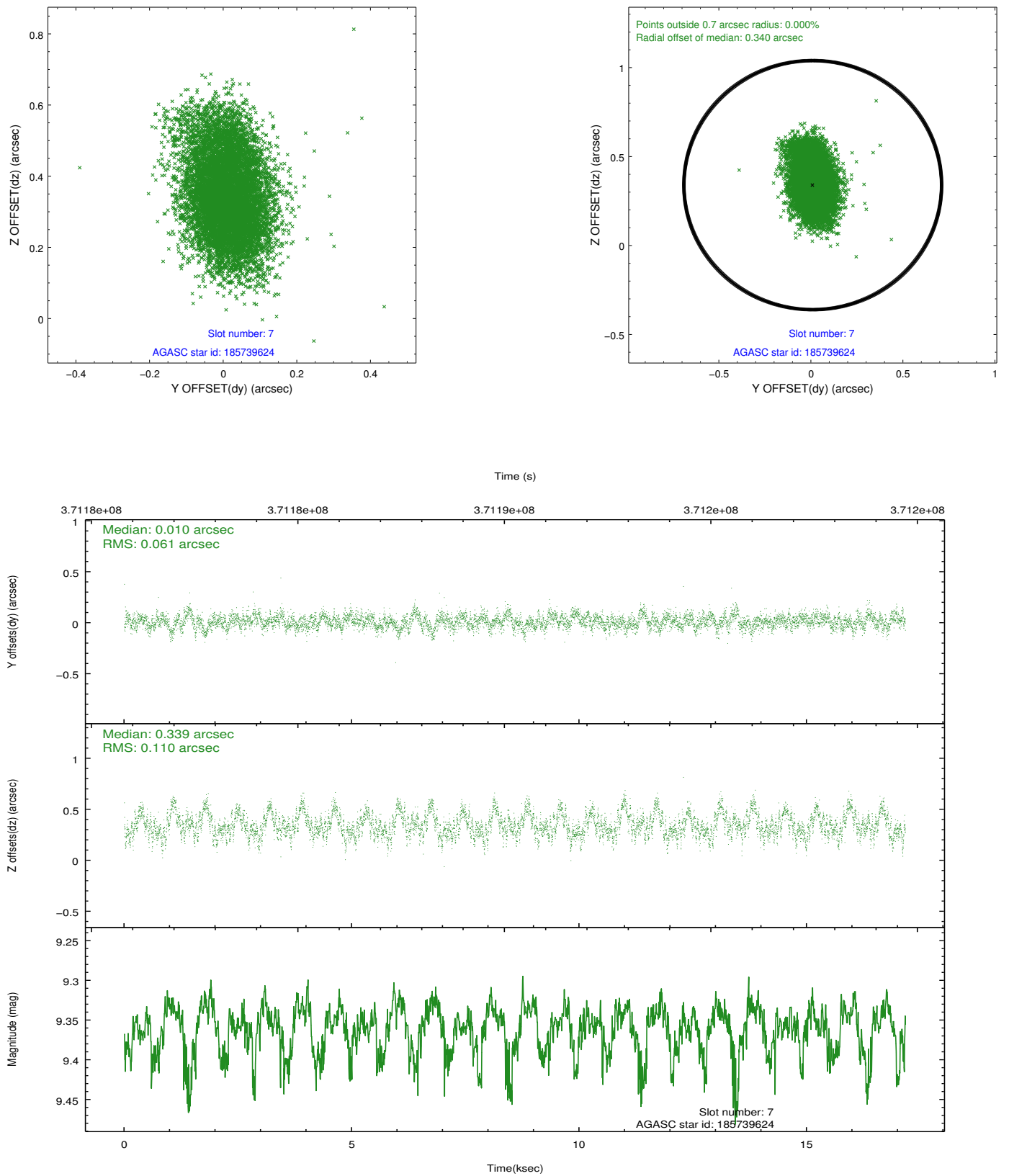
2.4.3 Slot 5



2.4.4 Slot 6

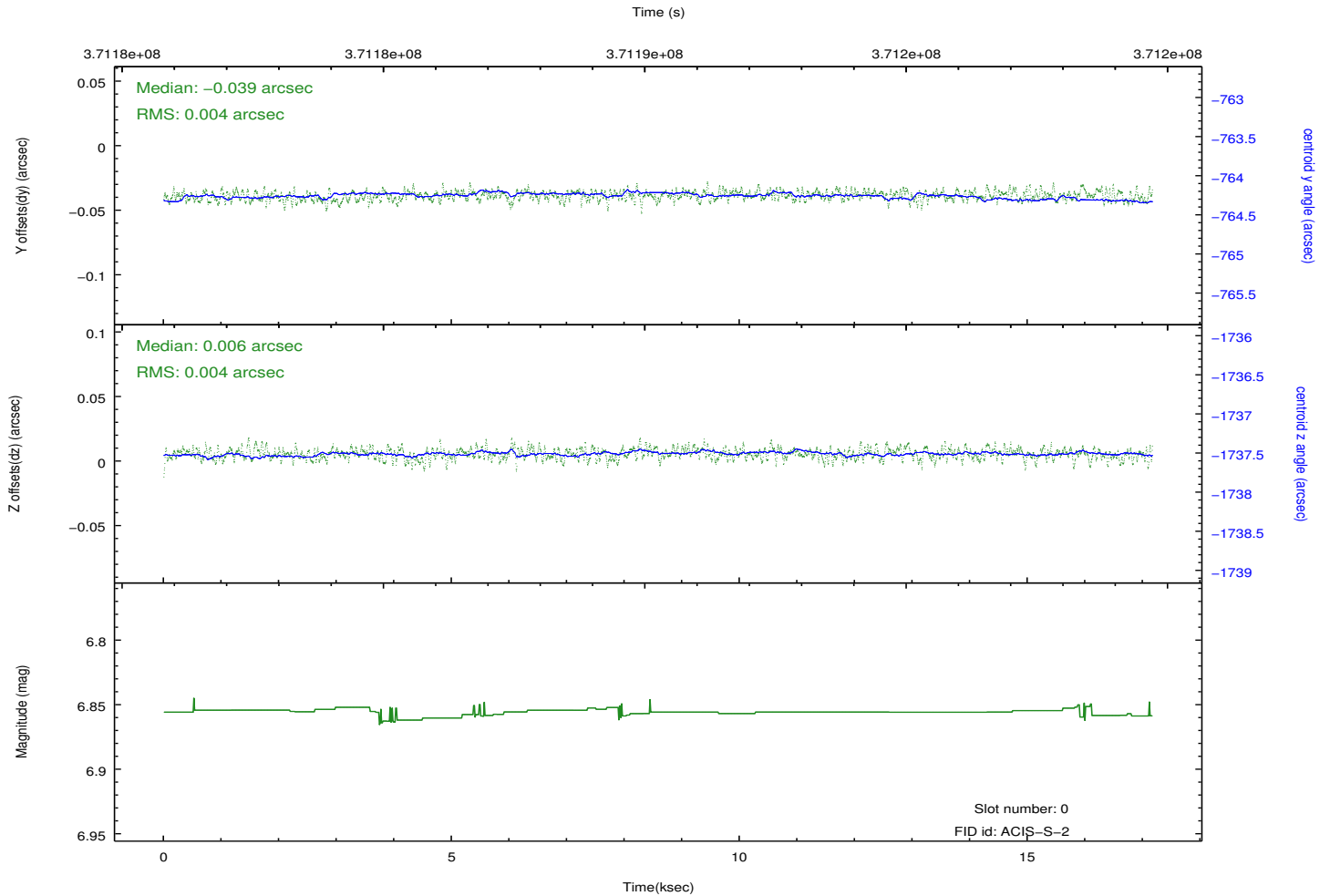
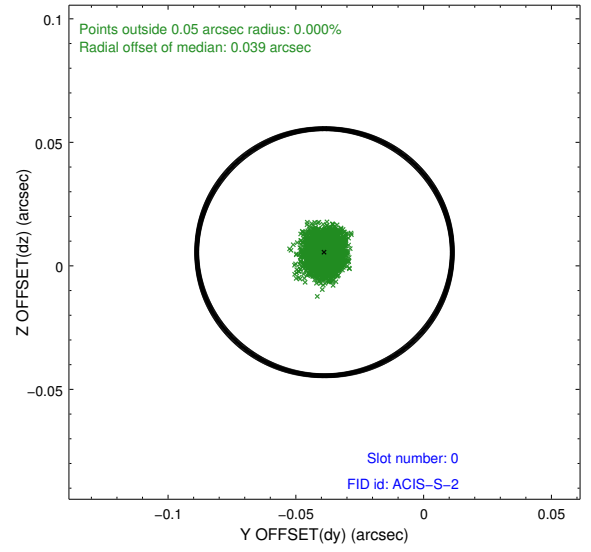
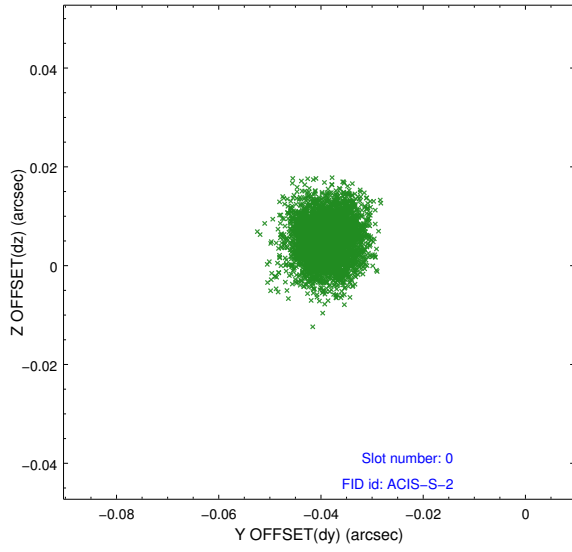


2.4.5 Slot 7

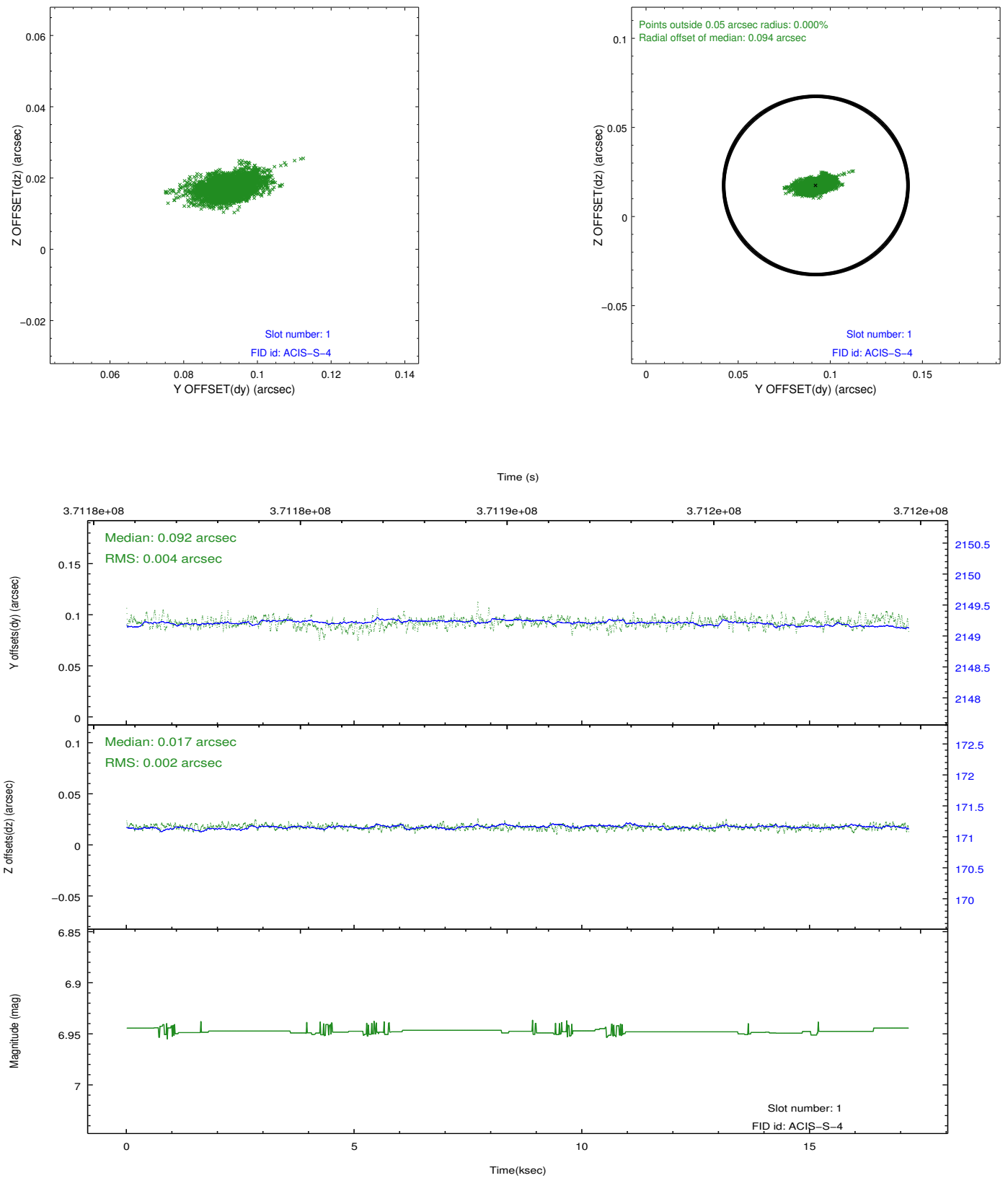


2.5 FID Slots

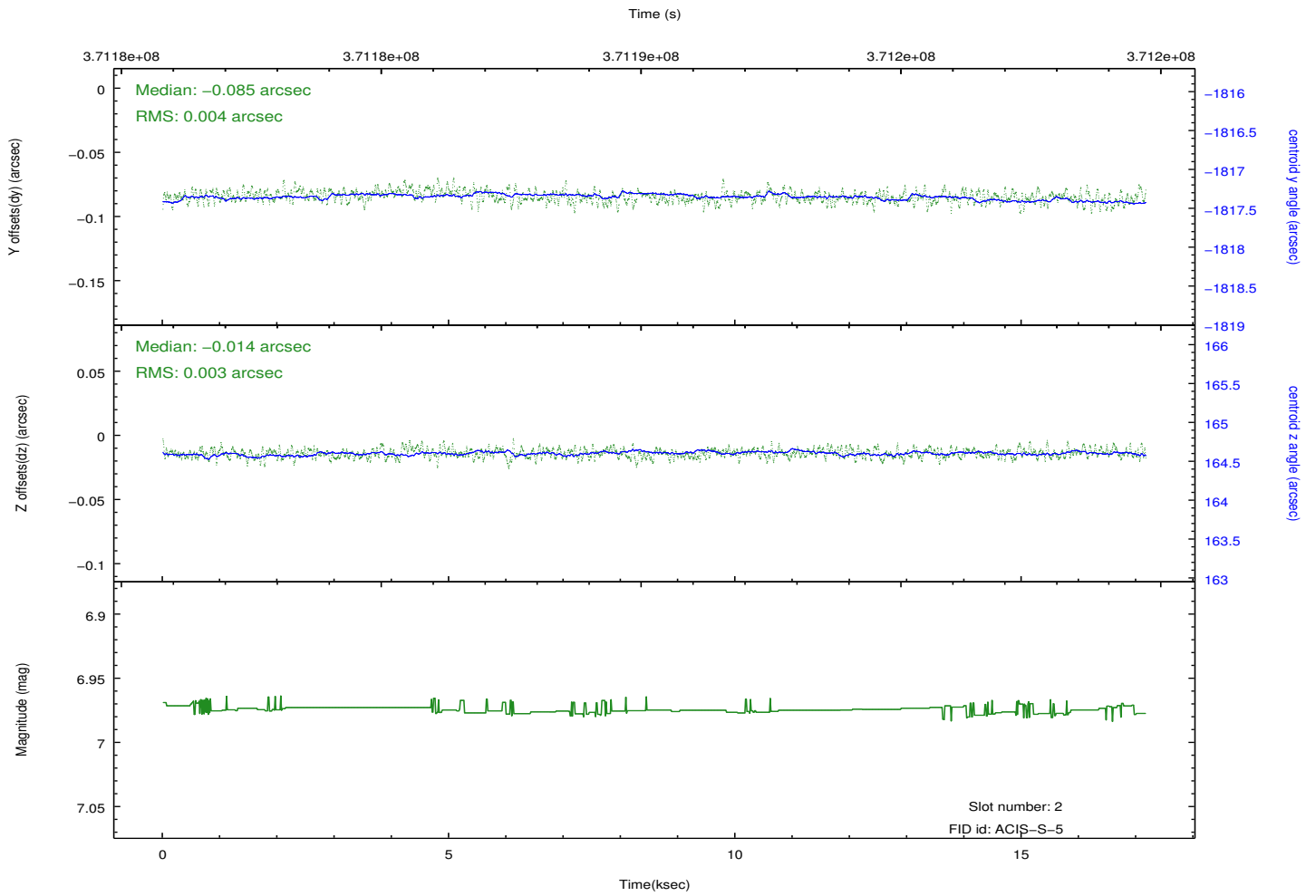
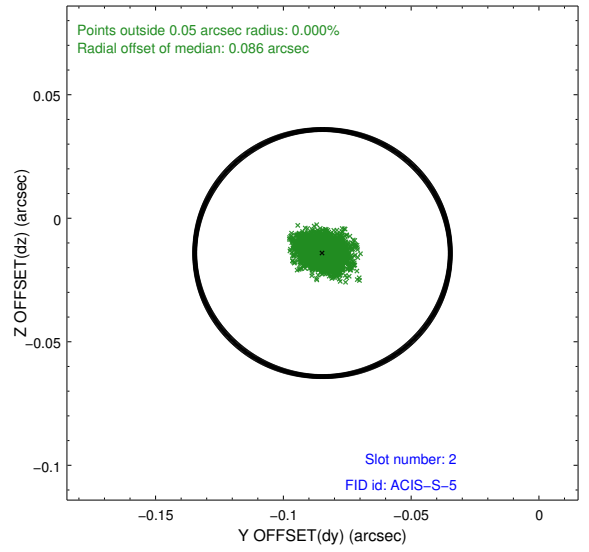
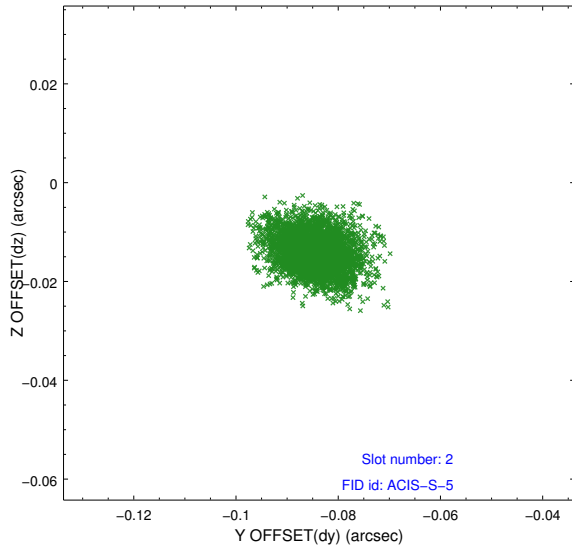
2.5.1 Slot 0



2.5.2 Slot 1



2.5.3 Slot 2



A Summary

A.1 Status

V&V Scientist	Beth Sundheim
V&V Date (YYYY-MM-DD)	2012.06.19
V&V Edition	1
V&V Disposition and Status	OK
V&V Charge Time	17.161600131989

A.2 Comments