

V&V Reference Report

L2 ASCDS Version : 8.4.5

Observation 10808 - L2 Version 2
Chandra X-Ray Center

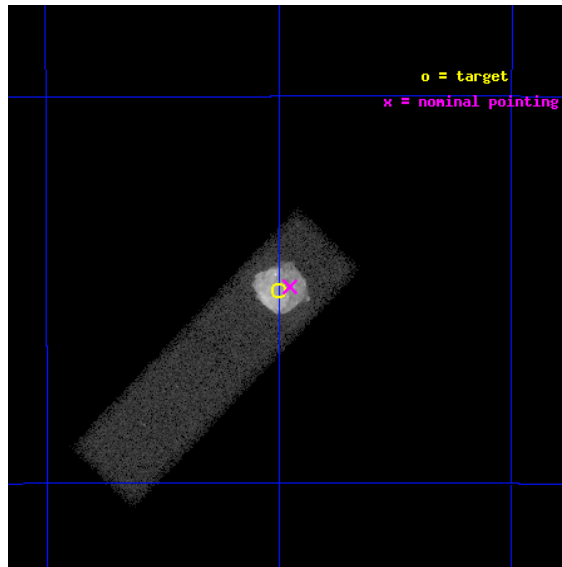
L2 Processing Date : Jun 28 2012

Contents

1	Front	2
2	OBI	3
2.1	OBI	3
2.1.1	Images	3
2.1.2	Bias	3
2.1.3	Parameters	4
2.1.4	Events	4
2.2	Compared Parameters	5
2.3	Aspect	6
2.4	Star Slots	9
2.4.1	Slot 3	9
2.4.2	Slot 4	10
2.4.3	Slot 5	11
2.4.4	Slot 6	12
2.4.5	Slot 7	13
2.5	FID Slots	14
2.5.1	Slot 0	14
2.5.2	Slot 1	15
2.5.3	Slot 2	16
A	Summary	17
A.1	Status	17
A.2	Comments	17

1 Front

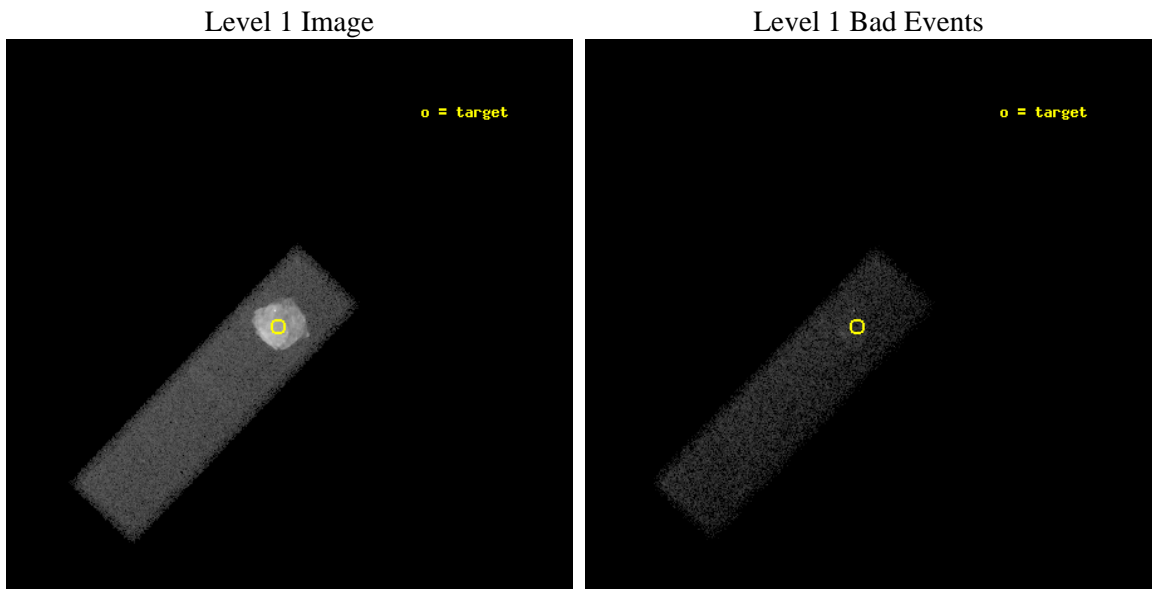
seq_num	501050	Sequence number
obs_id	10808	Observation id
title	A Deep Chandra Observation of Supernova Remnant N49 in the LMC	Pro
observer	DR. Sangwook Park	Principal investigator
object	N49	Source name
dtycycle	0	
cycle	P	events from which exps? Prim/Second/Both
ra_targ	81.5	Observer's specified target RA [deg]
dec_targ	-66.083333	Observer's specified target Dec [deg]
ra_nom	81.488428478428	Nominal RA [deg]
dec_nom	-66.08213901868	Nominal Dec [deg]
roll_nom	133.84039831924	Nominal Roll [deg]
revision	2	Processing version of data
ontime	30180.000449777	Sum of GTIs [s]
livetime	28707.315180992	Livetime [s]
ontime7	30180.000449777	Sum of GTIs [s]
l2events	231079	Number of level 2 events



2 OBI

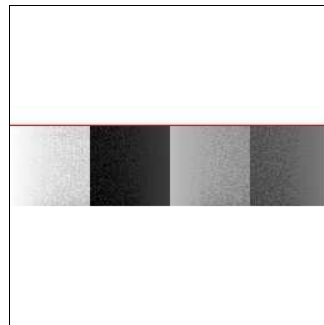
2.1 OBI

2.1.1 Images



2.1.2 Bias

Chip 7



2.1.3 Parameters

obi_num	0	Obi number	sched_exp_time	30000.000000	[s] Scheduled observation exposure time
ascdsver	8.4.5	Processing system revision	ontime	30180.000449777	Sum of GTIs [s]
caldbver	4.5.0	 	ontime7	30180.000449777	Sum of GTIs [s]
date	2012-06-28T13:44:27	Date and time of file creation	l1events	304547	Number of level 1 events
revision	2	Processing version of data			

2.1.4 Events

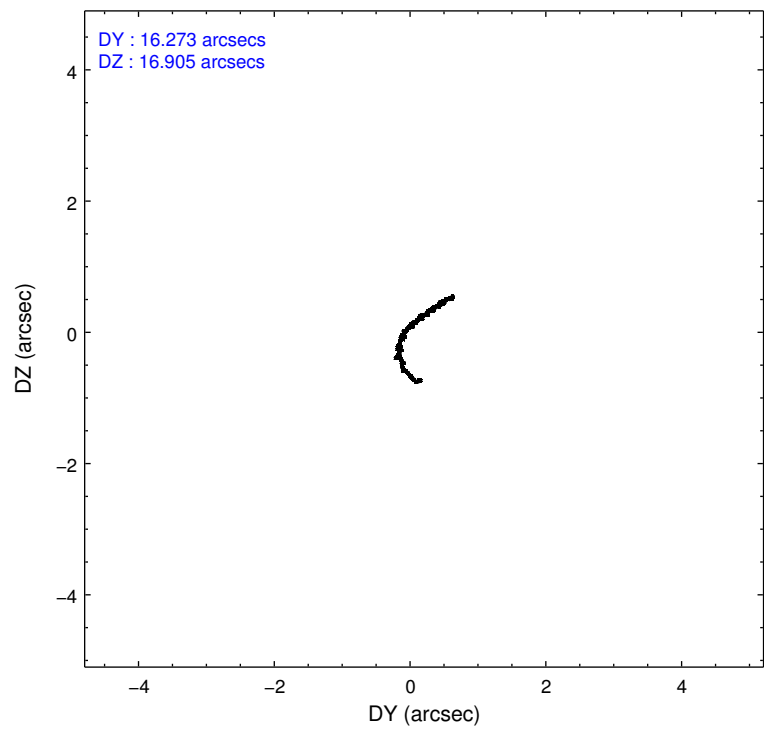
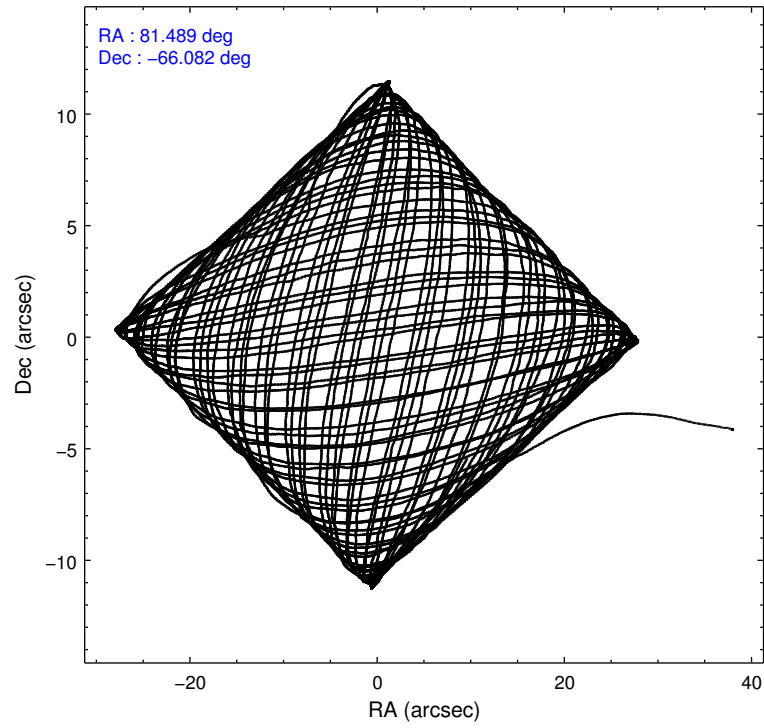
	ccd 7
level 1 events	304547
rejected events	67844
rejected %	22%

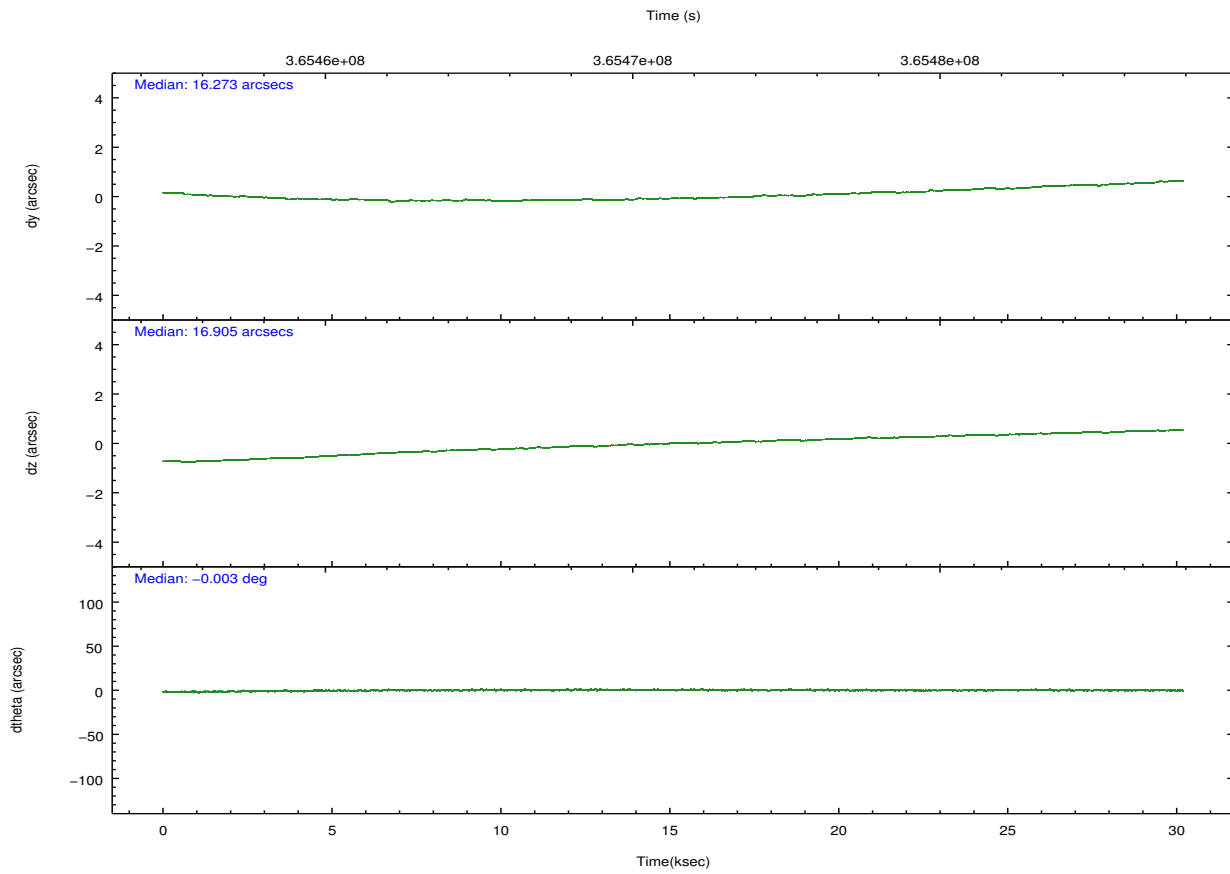
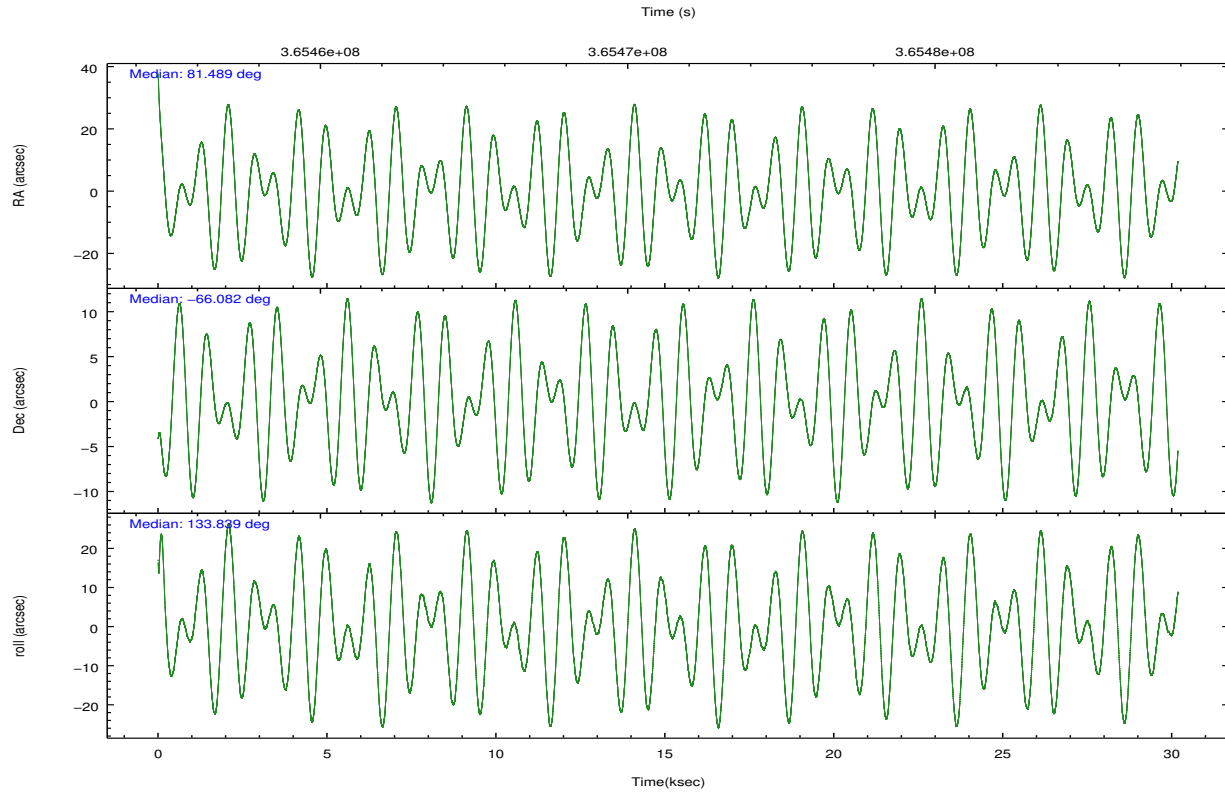
	ccd 7
grade 0 events	65923
	21%
grade 1 events	254
	0%
grade 2 events	61910
	20%
grade 3 events	28633
	9%
grade 4 events	27539
	9%
grade 5 events	12334
	4%
grade 6 events	55129
	18%
grade 7 events	52825
	17%

2.2 Compared Parameters

Parameter	Planned	Actual	Parameter	Planned	Actual
Instrument	ACIS	ACIS	Obspar format version number	7	7
Detector	ACIS-7	ACIS-7	Obspar file type	PREDICTED	ACTUAL
Grating	NONE	NONE	Obspar update status	NONE	UPDATED
Data mode	VFAINT	VFAINT	Number of optional ACIS chips dropped	0	0
Observation mode	POINTING	POINTING	On-chip summing requested	N	N
[deg] Pointing RA	81.553467	81.48842847842801	Subarray requested	CUSTOM	1/4
[deg] Pointing Dec	-66.089366	-66.08213901868029	Subarray start row	385	385
[deg] Pointing Roll	133.743231	133.8403983192357	Subarray row count	256	256
[mm] SIM focus pos	-0.684267	-0.6828225247311905	Alternating exposures requested	N	N
[mm] SIM defocus	0	0.001444936568705701	[s] Primary exposure time	0.000000	0.8
[mm] SIM translation stage pos	-190.132523	-190.1400660498719			
[mm] SIM translation stage offset	0	0.00754346686406393			
[s] Observation start time (MET)	365456409.184000	365455237.20837			
Observation start date	2009-07-31T19:39:03	2009-07-31T19:20:37			
[s] Observation end time (MET)	365486409.184000	365487043.98496			
Observation end date	2009-08-01T03:59:03	2009-08-01T04:10:43			
Read mode	TIMED	TIMED			

2.3 Aspect



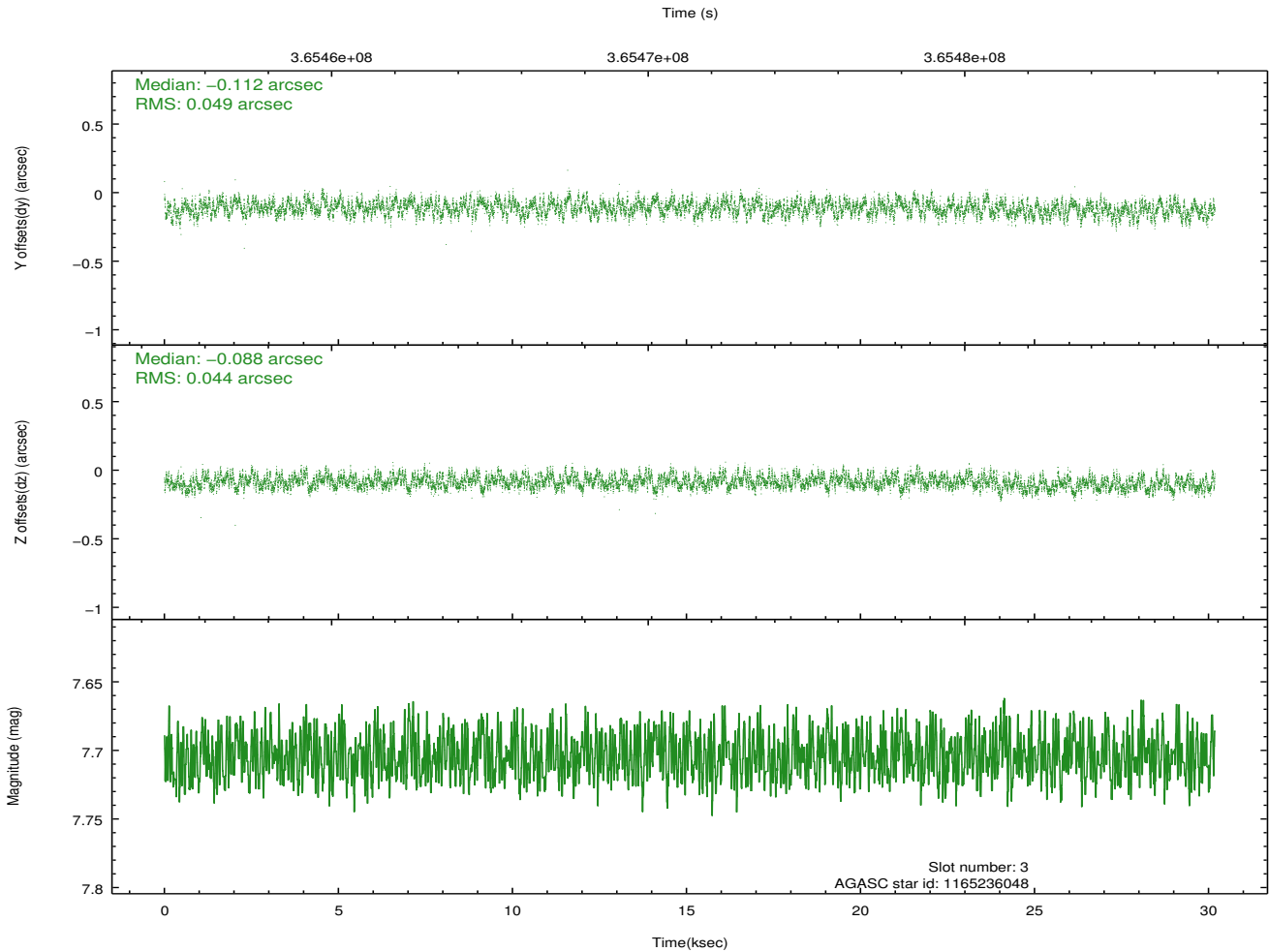
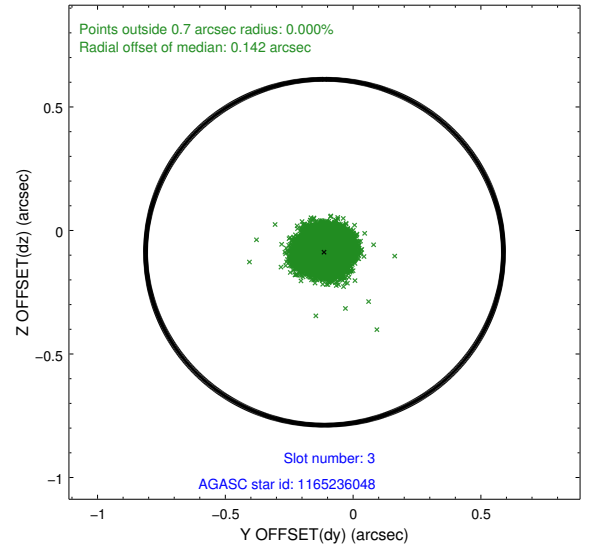
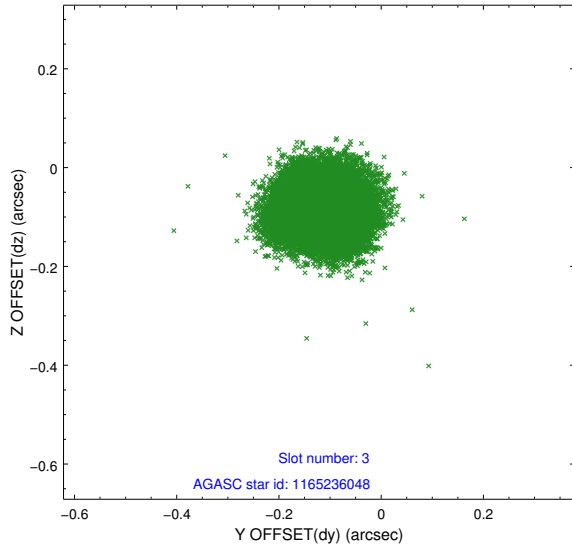


Slot Statistics

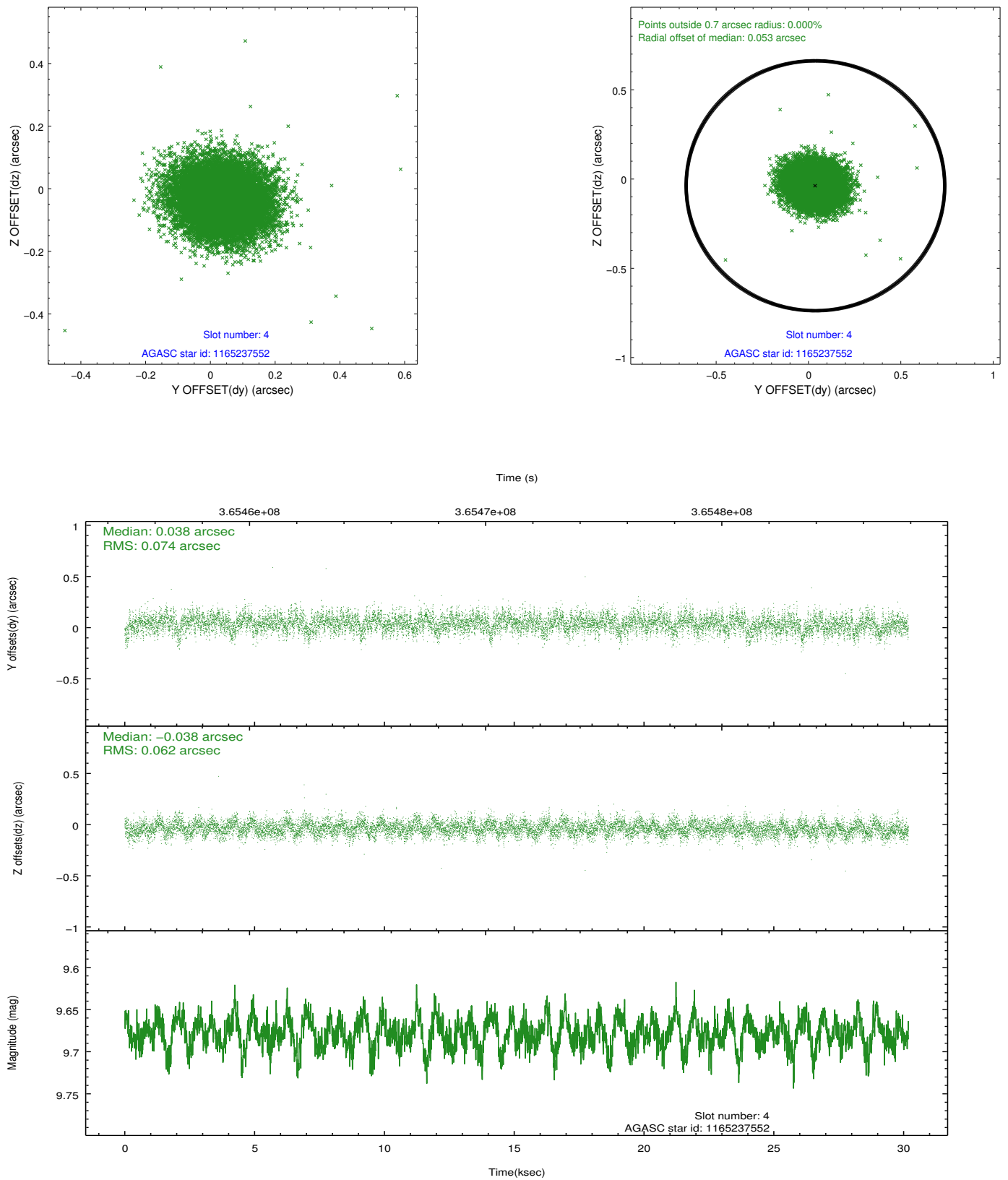
slot	status	id	mag	n_pts	med_dy	med_dz	dr1	dr2	ra	dec	mean_y	mean_z
0	FID	ACIS-S-2	6.96	7362	-0.107	-0.069	0.009	0.027	0.000000	0.000000	-769.50	-1738.33
1	FID	ACIS-S-4	7.04	7362	0.138	0.047	0.008	0.013	0.000000	0.000000	2144.03	170.12
2	FID	ACIS-S-6	7.18	7362	-0.060	0.028	0.009	0.017	0.000000	0.000000	392.68	807.62
3	GUIDE	1165236048	7.70	14716	-0.112	-0.088	0.072	0.109	80.001541	-66.057801	1629.90	1578.52
4	GUIDE	1165237552	9.68	14696	0.038	-0.038	0.101	0.166	80.257142	-65.800667	2059.54	677.20
5	GUIDE	1165364712	10.00	14689	0.145	0.197	0.125	0.203	82.070456	-66.128810	-625.04	-443.49
6	GUIDE	1165366168	7.32	14724	-0.076	0.225	0.049	0.082	83.133276	-65.825610	-944.96	-2318.51
7	GUIDE	1165382424	8.37	14706	0.012	-0.300	0.084	0.138	82.355152	-66.439036	-1712.20	41.63

2.4 Star Slots

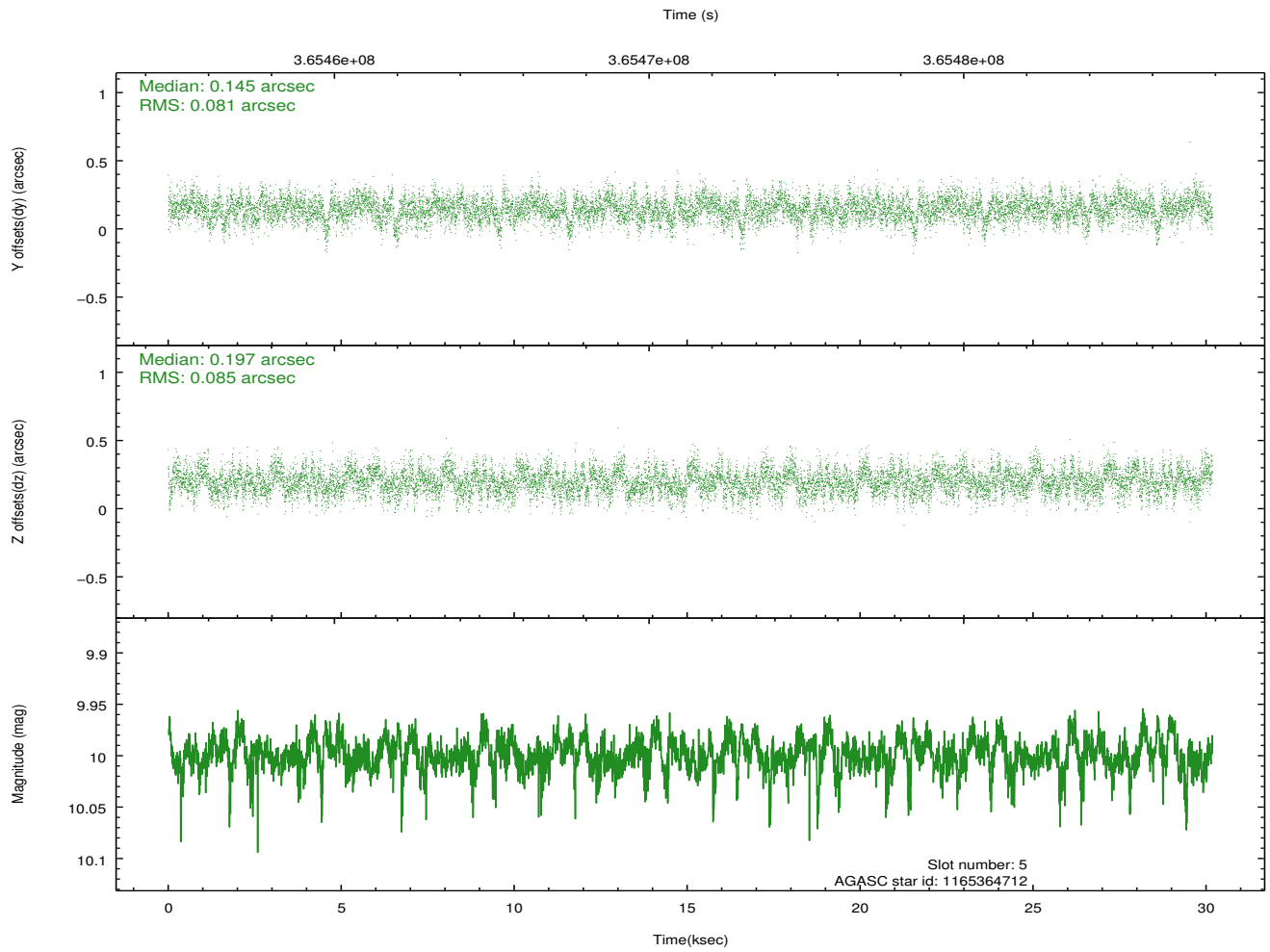
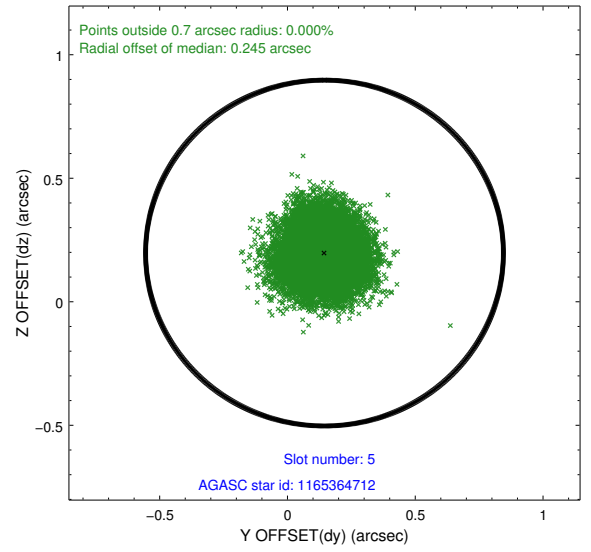
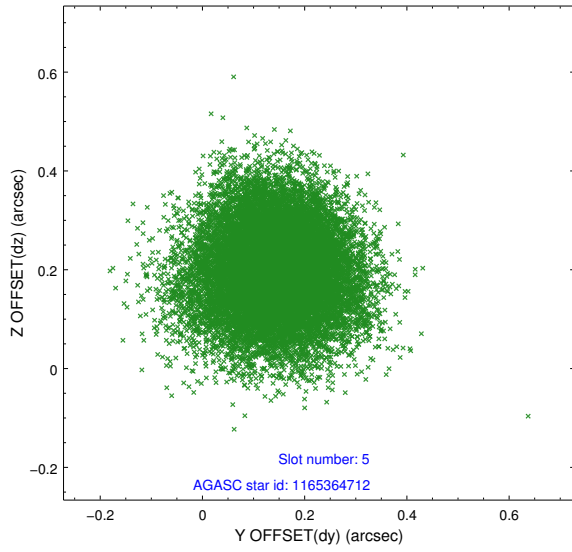
2.4.1 Slot 3



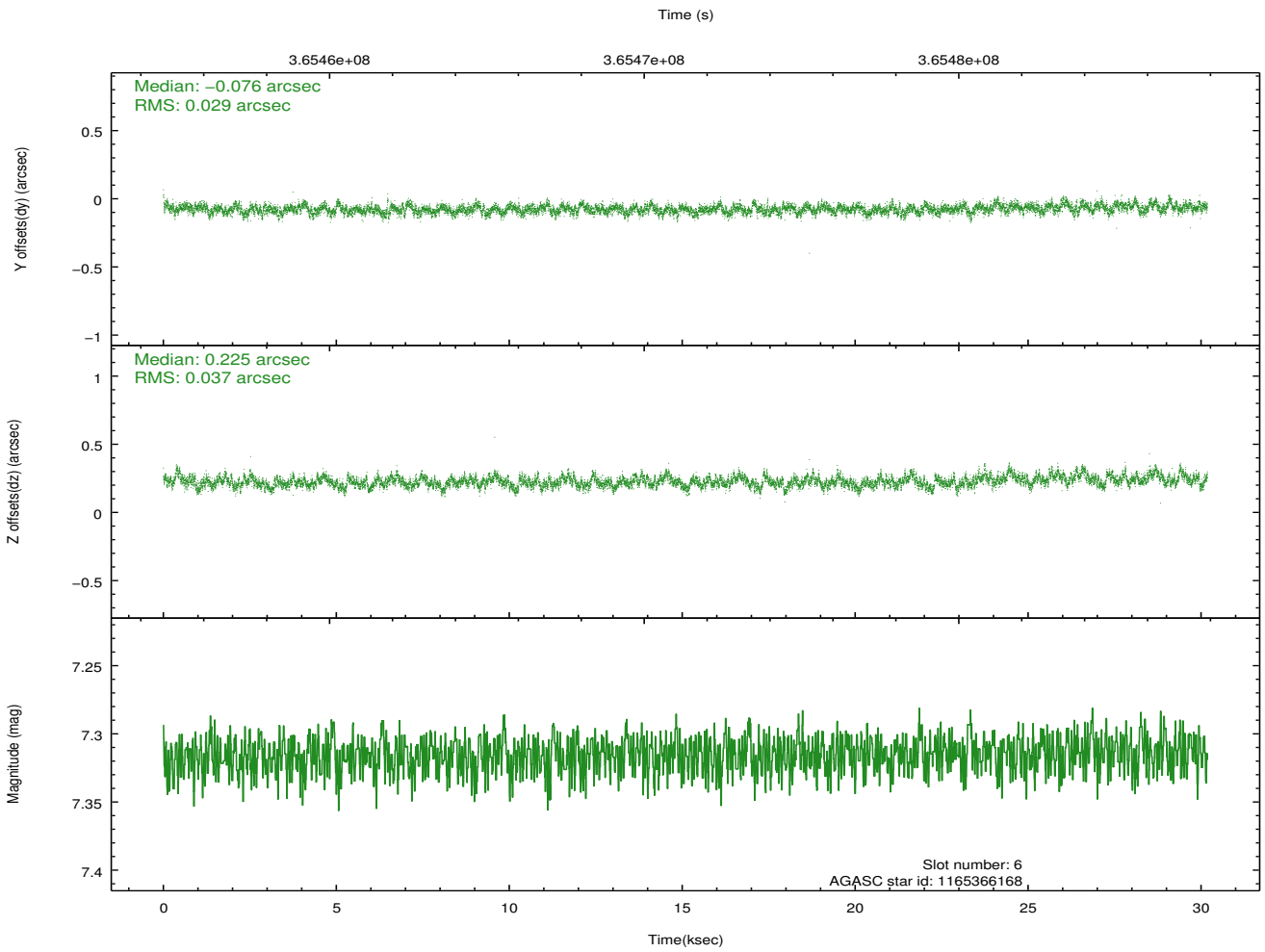
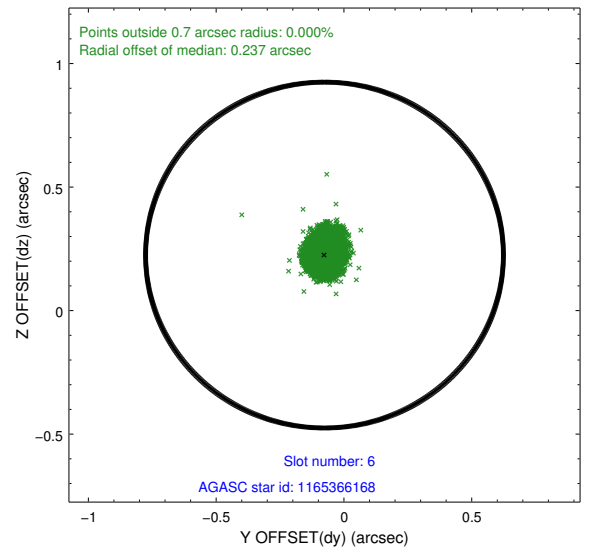
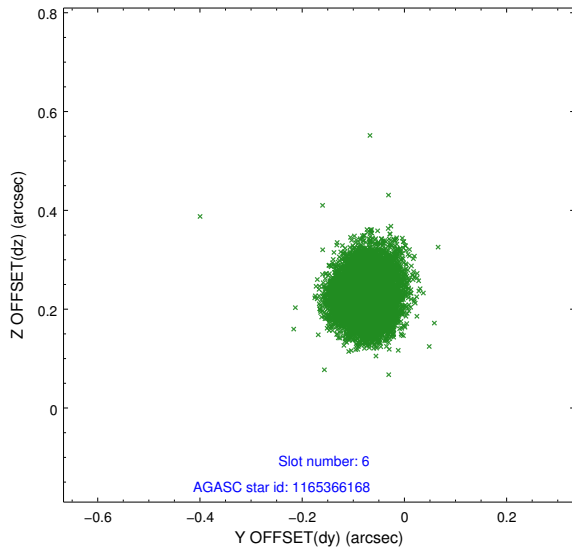
2.4.2 Slot 4



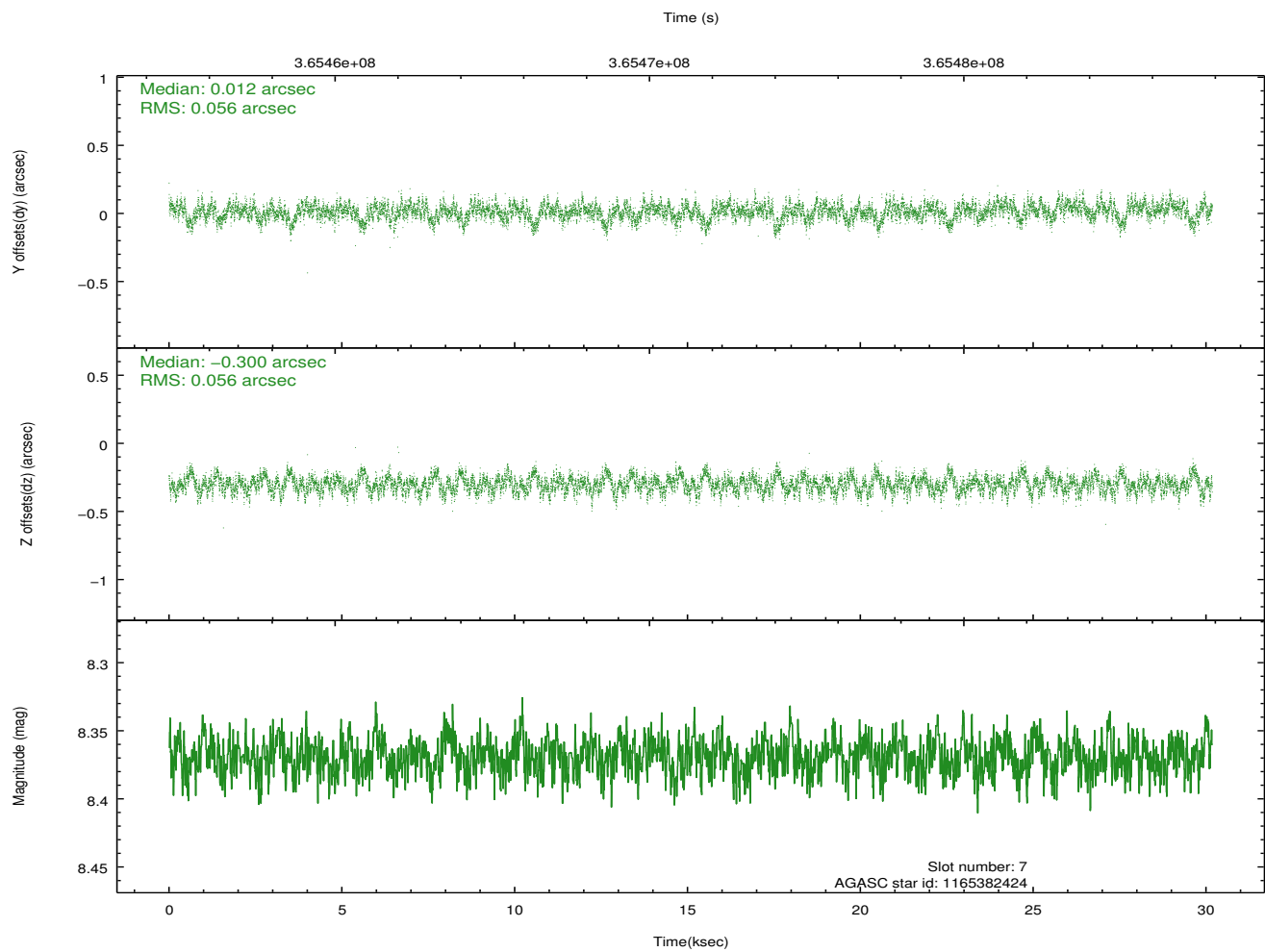
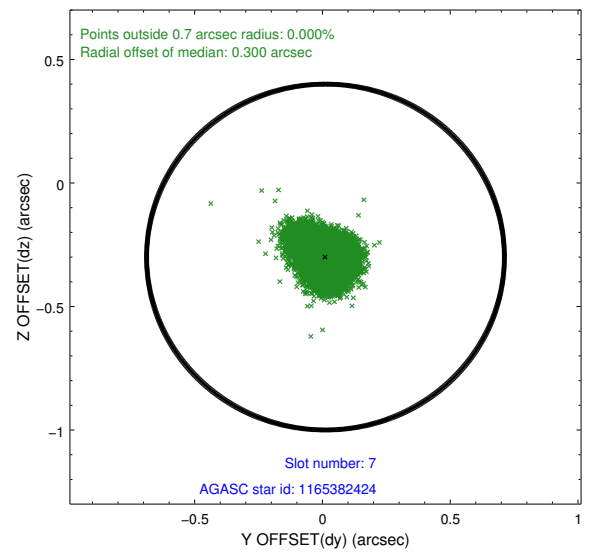
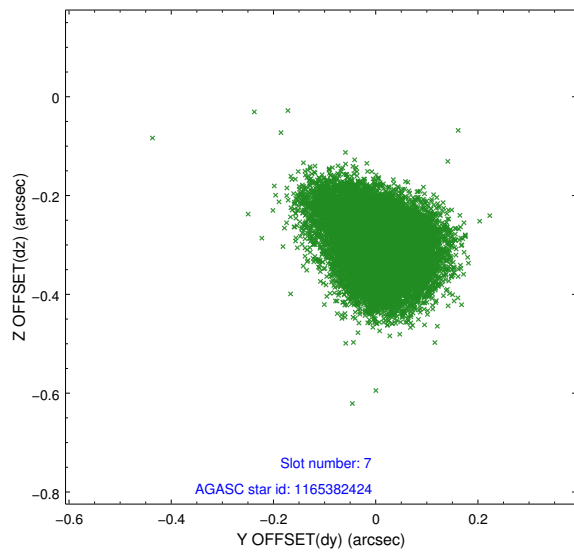
2.4.3 Slot 5



2.4.4 Slot 6

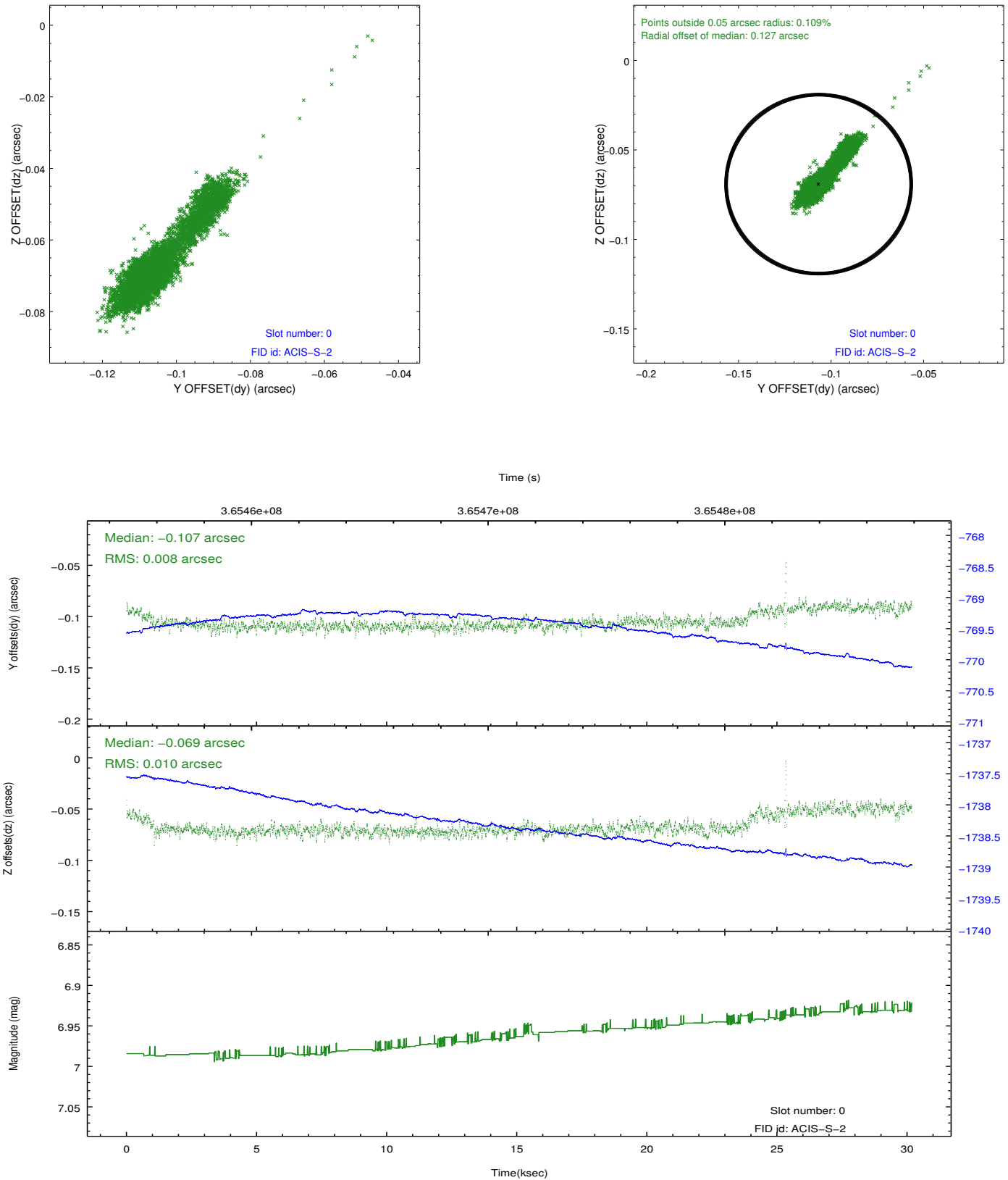


2.4.5 Slot 7

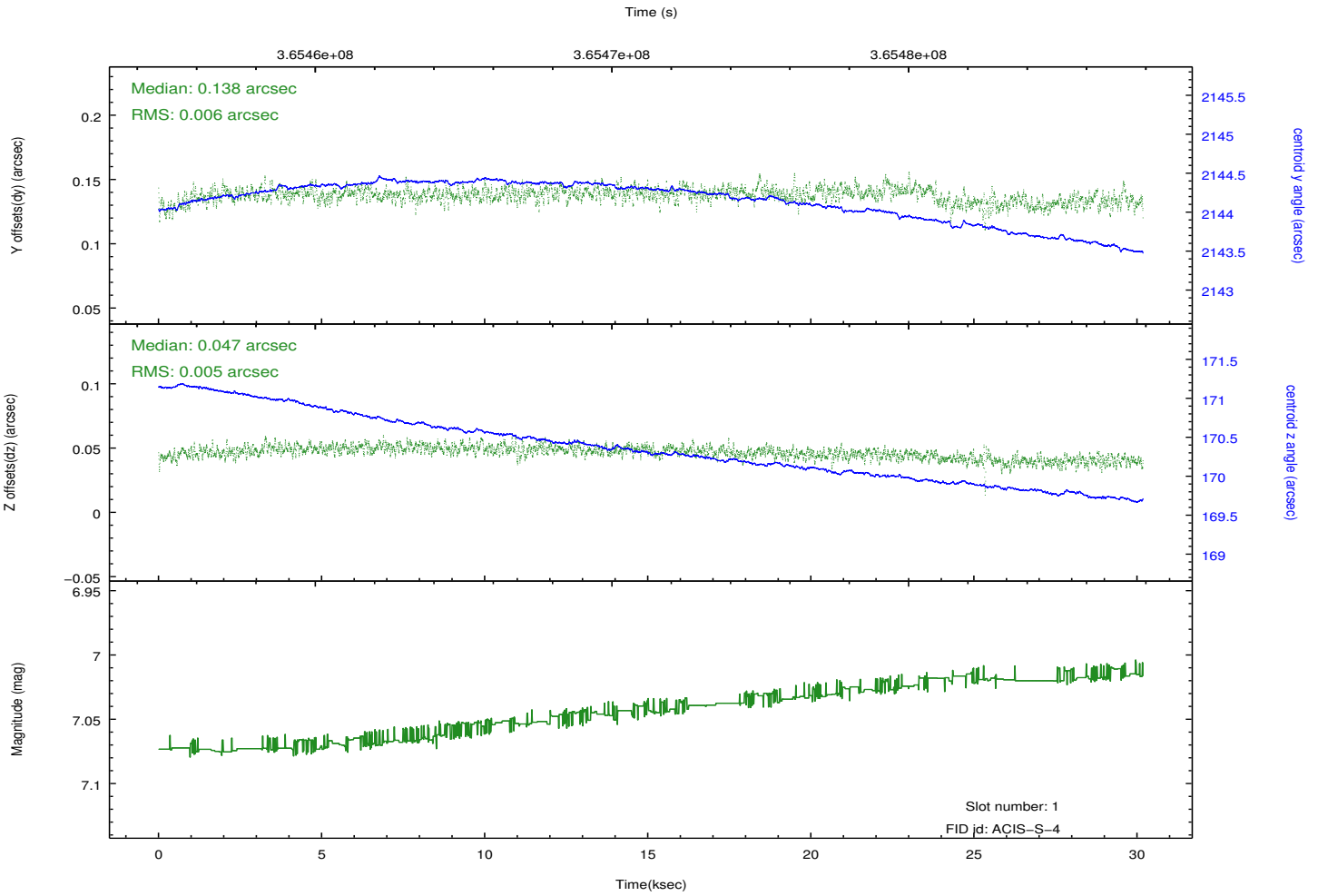
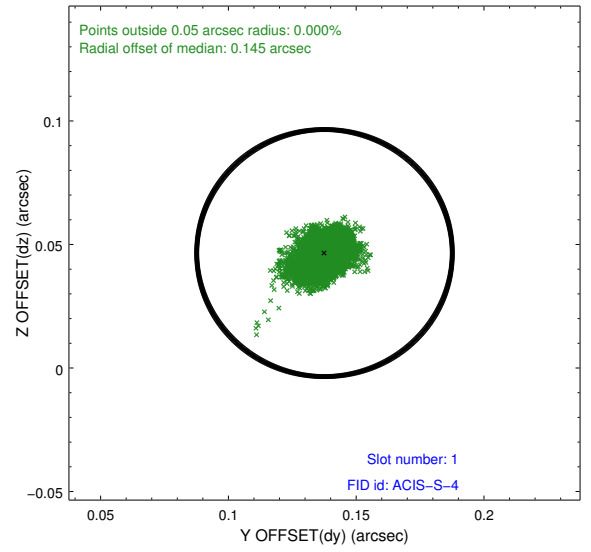
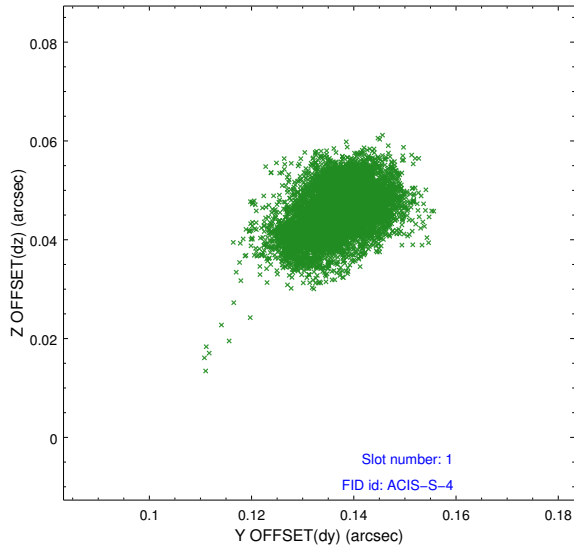


2.5 FID Slots

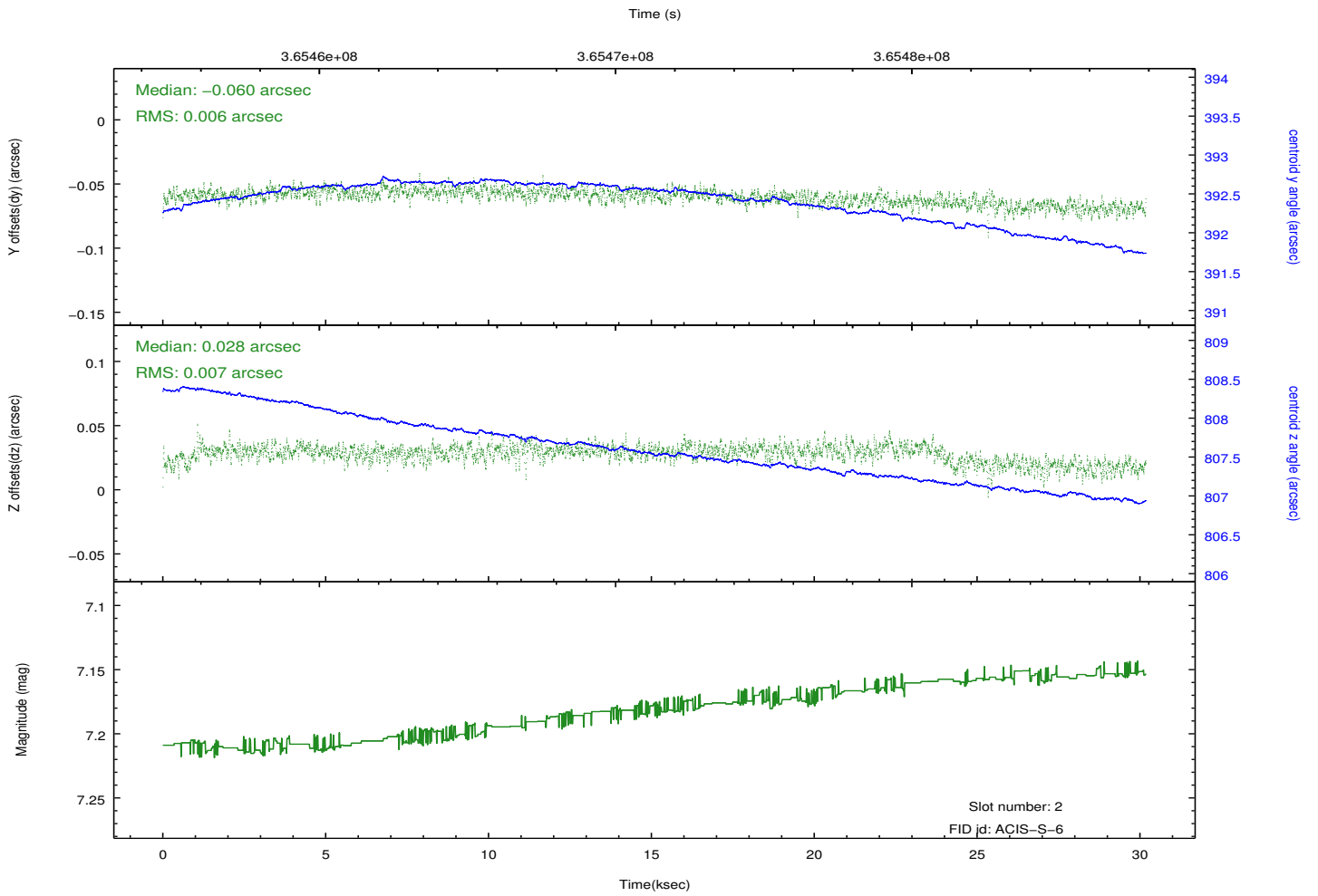
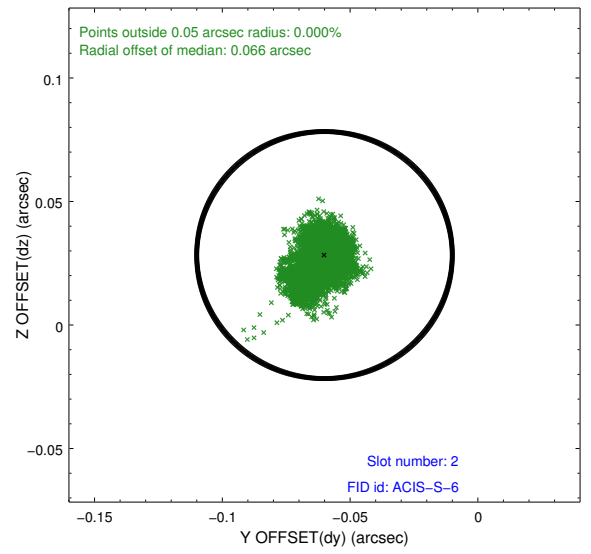
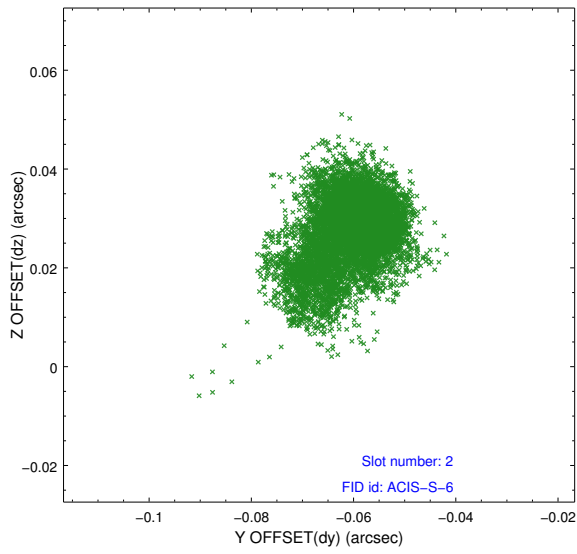
2.5.1 Slot 0



2.5.2 Slot 1



2.5.3 Slot 2



A Summary

A.1 Status

V&V Scientist	Jen Lauer
V&V Date (YYYY-MM-DD)	2012.07.05
V&V Edition	1
V&V Disposition and Status	OK
V&V Charge Time	30.180000449777

A.2 Comments