

V&V Reference Report

L2 ASCDS Version : 8.4.4

Observation 10818 - L2 Version 2
Chandra X-Ray Center

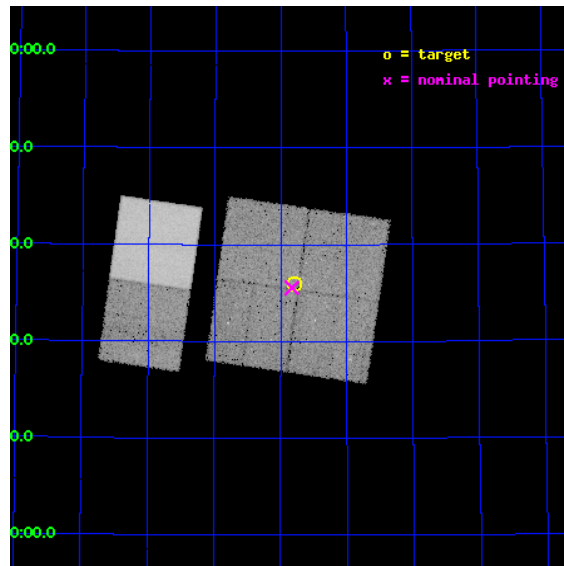
L2 Processing Date : May 24 2012

Contents

1	Front	2
2	OBI	3
2.1	OBI	3
2.1.1	Images	3
2.1.2	Bias	3
2.1.3	Parameters	4
2.1.4	Events	4
2.2	Compared Parameters	5
2.3	Aspect	6
2.4	Star Slots	9
2.4.1	Slot 3	9
2.4.2	Slot 4	10
2.4.3	Slot 5	11
2.4.4	Slot 6	12
2.4.5	Slot 7	13
2.5	FID Slots	14
2.5.1	Slot 0	14
2.5.2	Slot 1	15
2.5.3	Slot 2	16
A	Summary	17
A.1	Status	17
A.2	Comments	17

1 Front

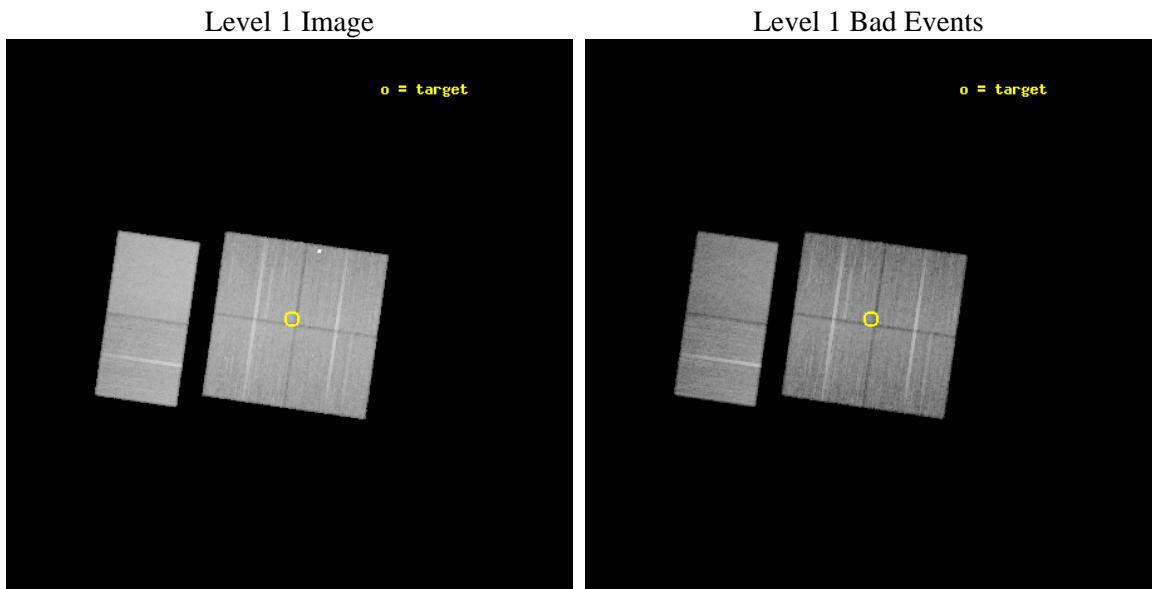
seq_num	200519	Sequence number
obs_id	10818	Observation id
title	The Evolution of X-ray Emission in the Planet-Forming Era	Proposal
observer	Dr Jon Miller	Principal investigator
object	NGC 7160	Source name
dtycycle	0	
cycle	P	events from which exps? Prim/Second/Both
ra_targ	328.45	Observer's specified target RA [deg]
dec_targ	62.6	Observer's specified target Dec [deg]
ra_nom	328.45753123883	Nominal RA [deg]
dec_nom	62.592699675546	Nominal Dec [deg]
roll_nom	278.20201126021	Nominal Roll [deg]
revision	2	Processing version of data
ontime	20950.399922013	Sum of GTIs [s]
livetime	20685.113343384	Livetime [s]
ontime0	20950.399922013	Sum of GTIs [s]
ontime1	20950.399922013	Sum of GTIs [s]
ontime2	20950.399922013	Sum of GTIs [s]
ontime3	20950.399922013	Sum of GTIs [s]
ontime6	20947.158931673	Sum of GTIs [s]
ontime7	20950.399922013	Sum of GTIs [s]
l2events	233844	Number of level 2 events



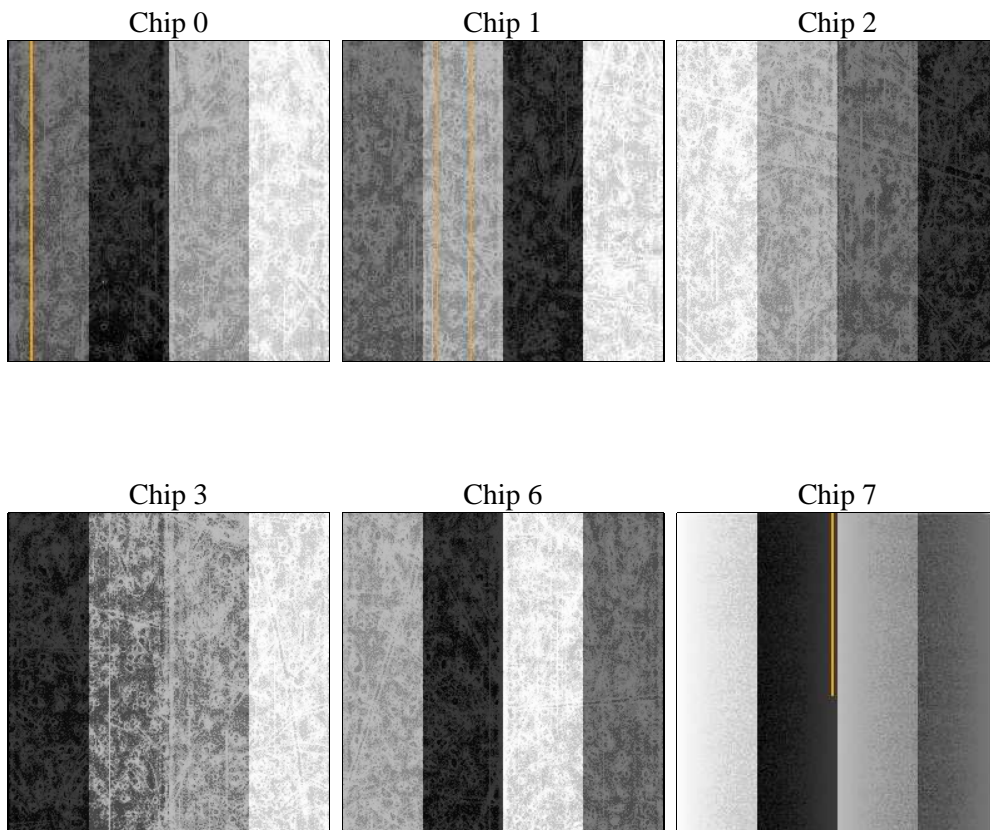
2 OBI

2.1 OBI

2.1.1 Images



2.1.2 Bias



2.1.3 Parameters

obi_num	0	Obi number	sched_exp_time	21000.000000	[s] Scheduled observation exposure time
ascdsver	8.4.4	Processing system revision	ontime	20950.399922013	Sum of GTIs [s]
caldbver	4.4.9	 	ontime0	20950.399922013	Sum of GTIs [s]
date	2012-05-24T16:06:29	Date and time of file creation	ontime1	20950.399922013	Sum of GTIs [s]
revision	2	Processing version of data	ontime2	20950.399922013	Sum of GTIs [s]
			ontime3	20950.399922013	Sum of GTIs [s]
			ontime6	20947.158931673	Sum of GTIs [s]
			ontime7	20950.399922013	Sum of GTIs [s]
			l1events	1335356	Number of level 1 events

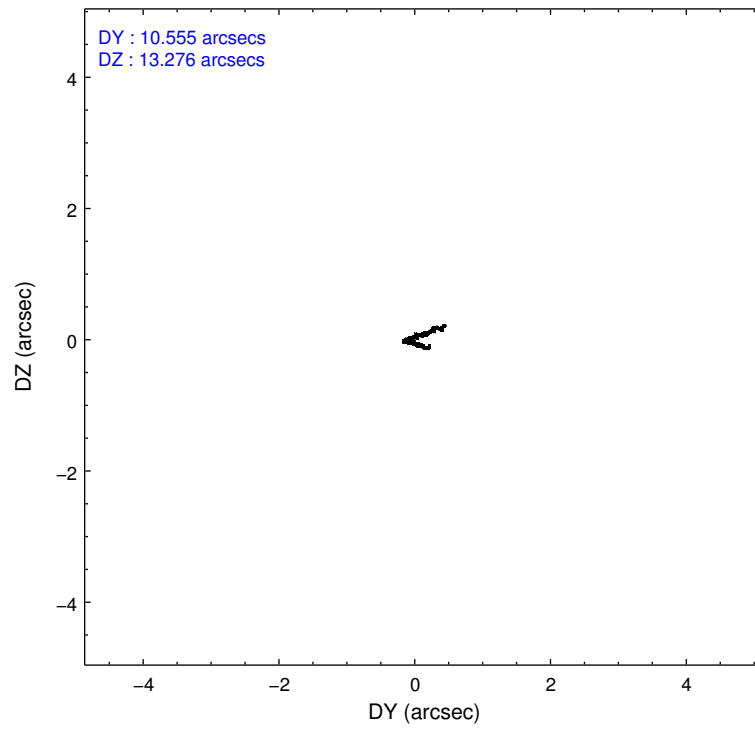
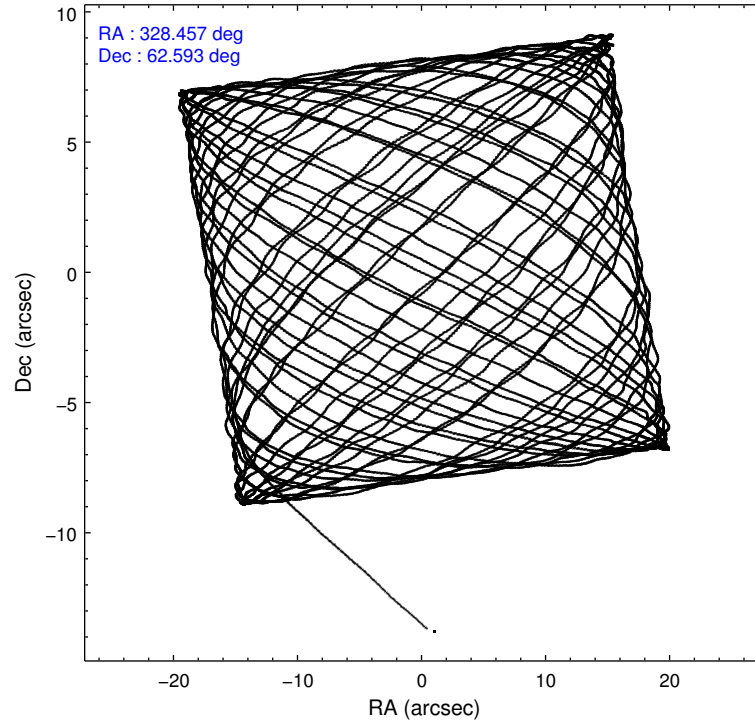
2.1.4 Events

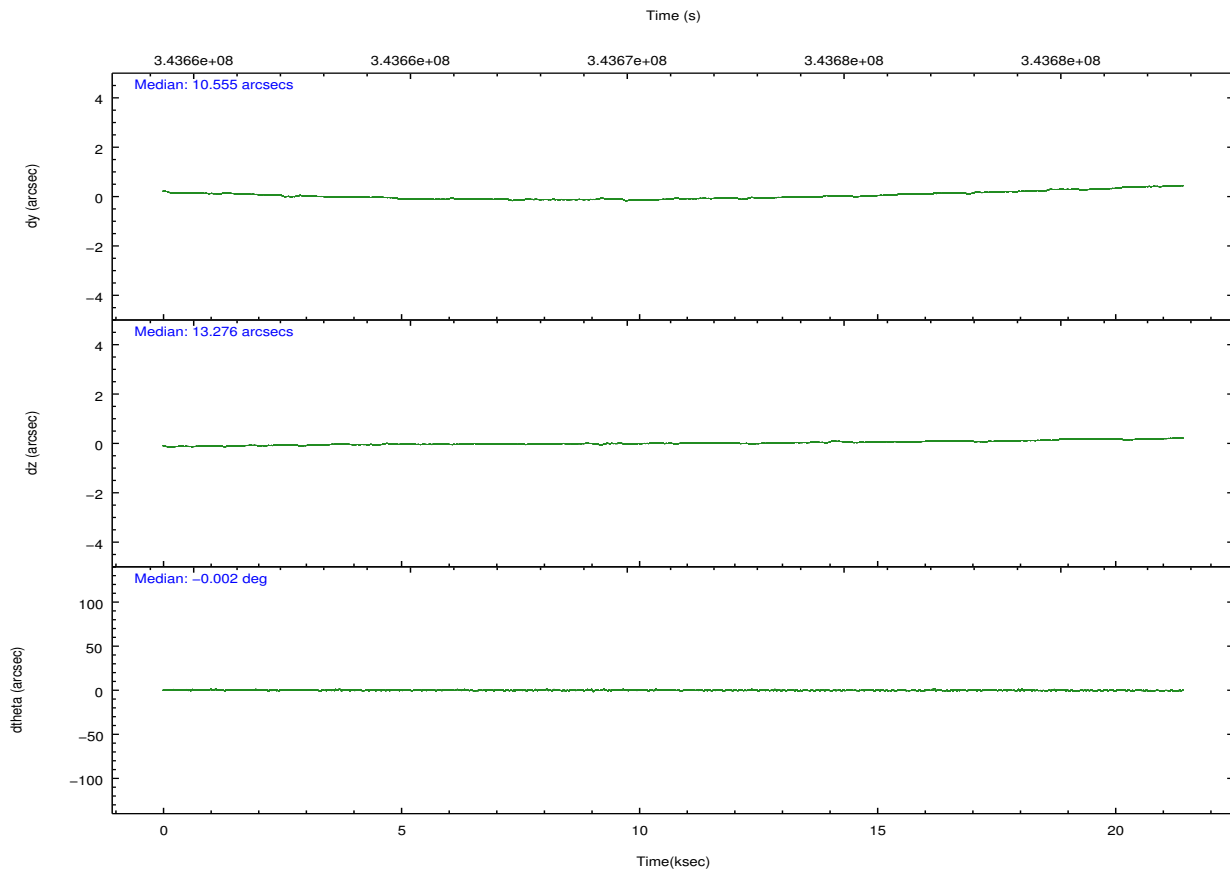
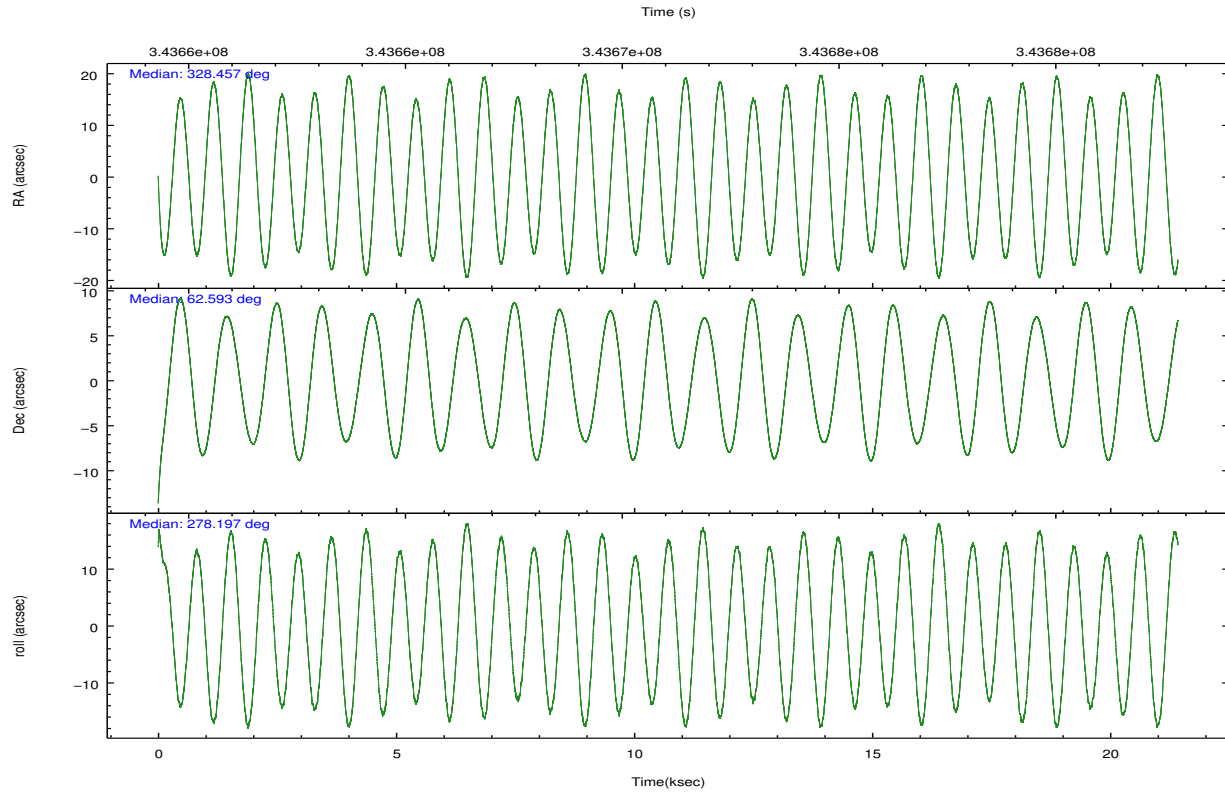
	ccd 0	ccd 1	ccd 2	ccd 3	ccd 6	ccd 7		ccd 0	ccd 1	ccd 2	ccd 3	ccd 6	ccd 7
level 1 events	194065	203632	215190	205907	221788	294774	grade 0 events	11748	10721	10998	11133	10323	10077
rejected events	166869	169821	189864	180395	195393	172357		6%	5%	5%	5%	4%	3%
rejected %	85%	83%	88%	87%	88%	58%	grade 1 events	119	127	128	175	121	329
								0%	0%	0%	0%	0%	0%
							grade 2 events	5922	12652	5454	5023	5960	25151
								3%	6%	2%	2%	2%	8%
							grade 3 events	2423	2558	2335	2335	2361	10244
								1%	1%	1%	1%	1%	3%
							grade 4 events	2308	2576	2315	2456	2322	10157
								1%	1%	1%	1%	1%	3%
							grade 5 events	8782	9512	8589	10048	10526	27630
								4%	4%	3%	4%	4%	9%
							grade 6 events	4802	5315	4232	4573	5435	66821
								2%	2%	1%	2%	2%	22%
							grade 7 events	157961	160171	181139	170164	184740	144365
								81%	78%	84%	82%	83%	48%

2.2 Compared Parameters

Parameter	Planned	Actual	Parameter	Planned	Actual
Instrument	ACIS	ACIS	Obspar format version number	7	7
Detector	ACIS-012367	ACIS-012367	Obspar file type	PREDICTED	ACTUAL
Grating	NONE	NONE	Obspar update status	NONE	UPDATED
Data mode	FAINT	FAINT	Number of optional ACIS chips dropped	0	0
Observation mode	POINTING	POINTING	On-chip summing requested	N	N
[deg] Pointing RA	328.420397	328.4575312388309	Subarray requested	NONE	NONE
[deg] Pointing Dec	62.614238	62.59269967554633	Alternating exposures requested	N	N
[deg] Pointing Roll	278.026288	278.2020112602068	[s] Primary exposure time	0.000000	3.2
[mm] SIM focus pos	-0.782348	-0.7809083437167272			
[mm] SIM defocus	0	0.001439871863259334			
[mm] SIM translation stage pos	-233.592463	-233.5874344608287			
[mm] SIM translation stage offset	0	-0.005018542100998502			
[s] Observation start time (MET)	343660764.184000	343659628.94993			
Observation start date	2008-11-21T13:18:19	2008-11-21T13:00:28			
[s] Observation end time (MET)	343681764.184000	343682580.75106			
Observation end date	2008-11-21T19:08:19	2008-11-21T19:23:00			
Read mode	TIMED	TIMED			

2.3 Aspect



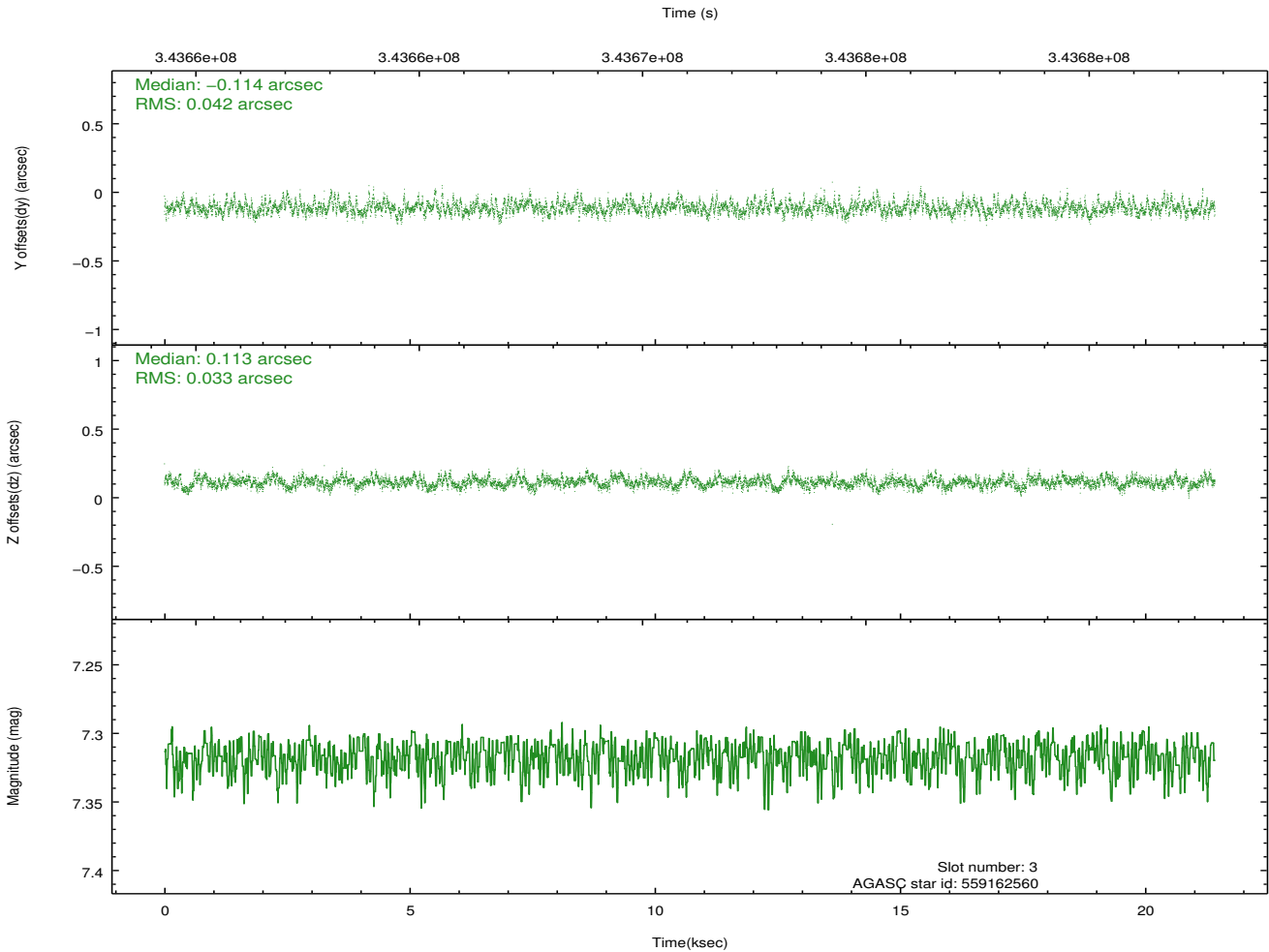
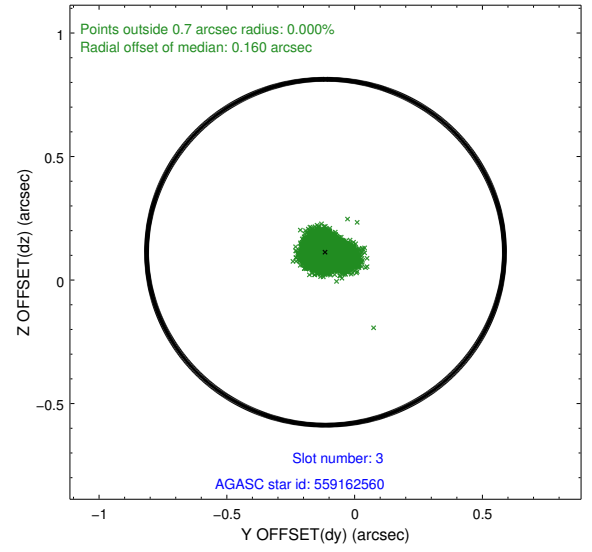
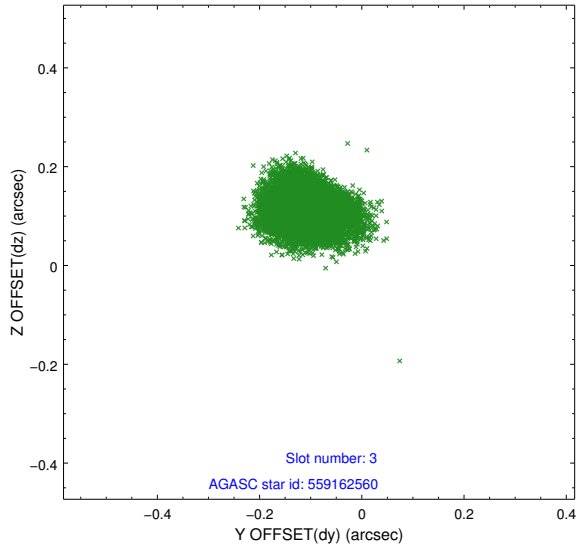


Slot Statistics

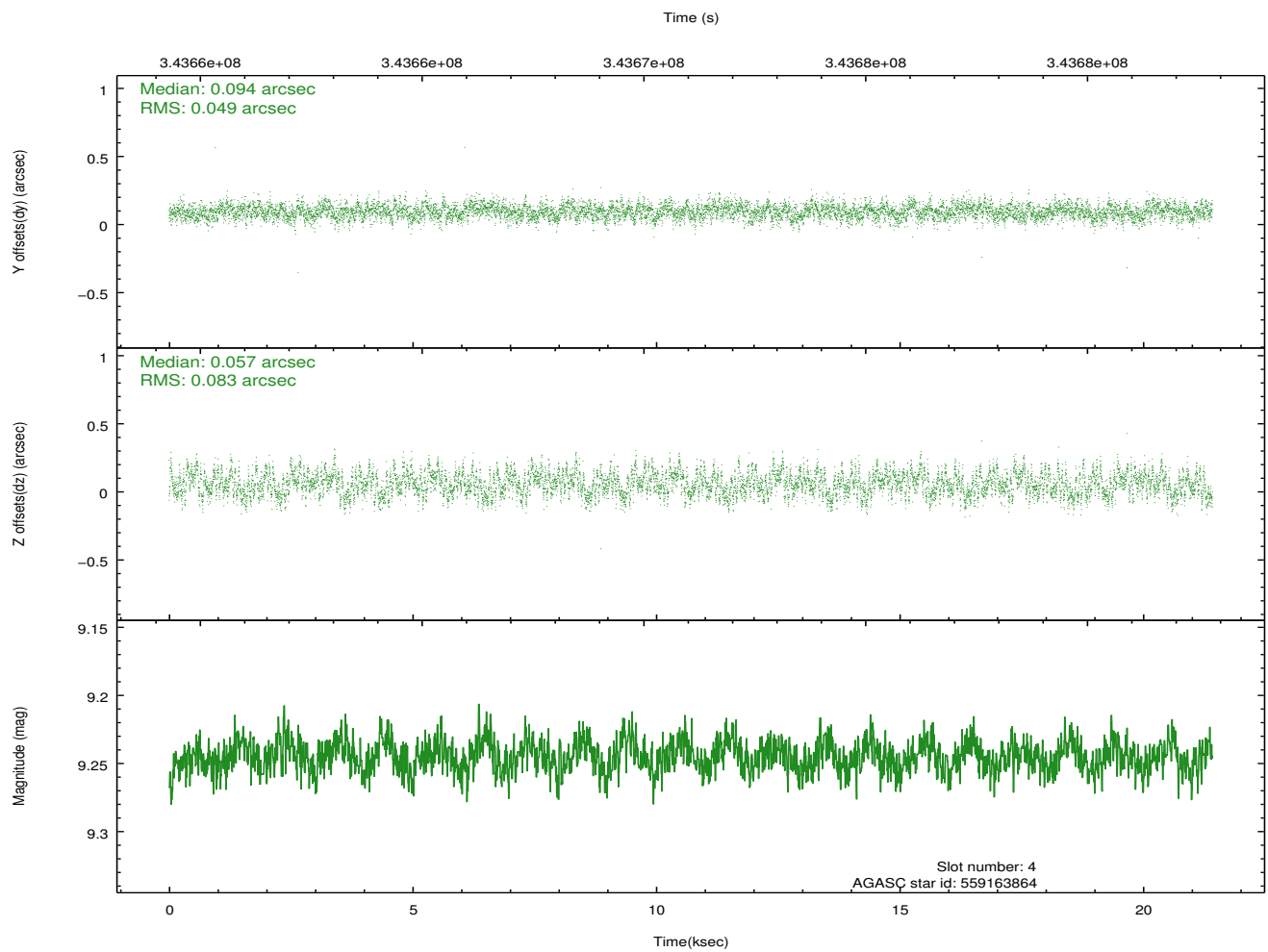
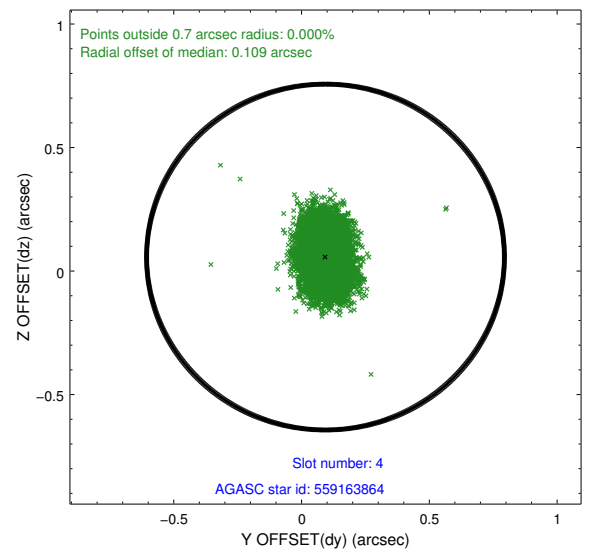
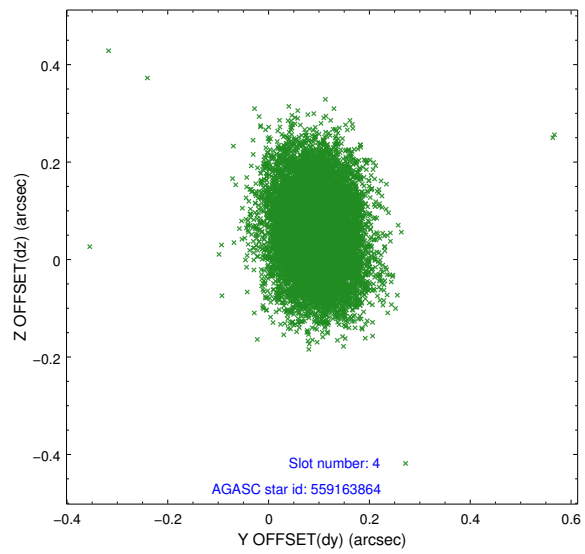
slot	status	id	mag	n_pts	med_dy	med_dz	dr1	dr2	ra	dec	mean_y	mean_z
0	FID	ACIS-I-1	7.03	5225	0.059	-0.003	0.007	0.013	0.000000	0.000000	929.04	-836.85
1	FID	ACIS-I-5	7.01	5225	-0.213	0.068	0.008	0.014	0.000000	0.000000	-1819.25	1060.62
2	FID	ACIS-I-6	7.02	5225	0.062	0.006	0.007	0.011	0.000000	0.000000	394.40	1705.25
3	GUIDE	559162560	7.32	10450	-0.114	0.113	0.056	0.093	328.973659	63.261063	-2184.32	1212.94
4	GUIDE	559163864	9.24	10441	0.094	0.057	0.102	0.166	327.323031	62.690574	-540.35	-1753.47
5	GUIDE	559167352	7.19	10450	-0.047	0.052	0.065	0.104	328.757272	62.009100	2235.22	259.96
6	GUIDE	559171856	8.05	10446	0.042	0.152	0.067	0.106	329.066735	62.894631	-856.45	1191.78
7	GUIDE	559165880	8.06	10441	0.020	-0.375	0.062	0.099	329.840271	62.759696	-217.47	2393.23

2.4 Star Slots

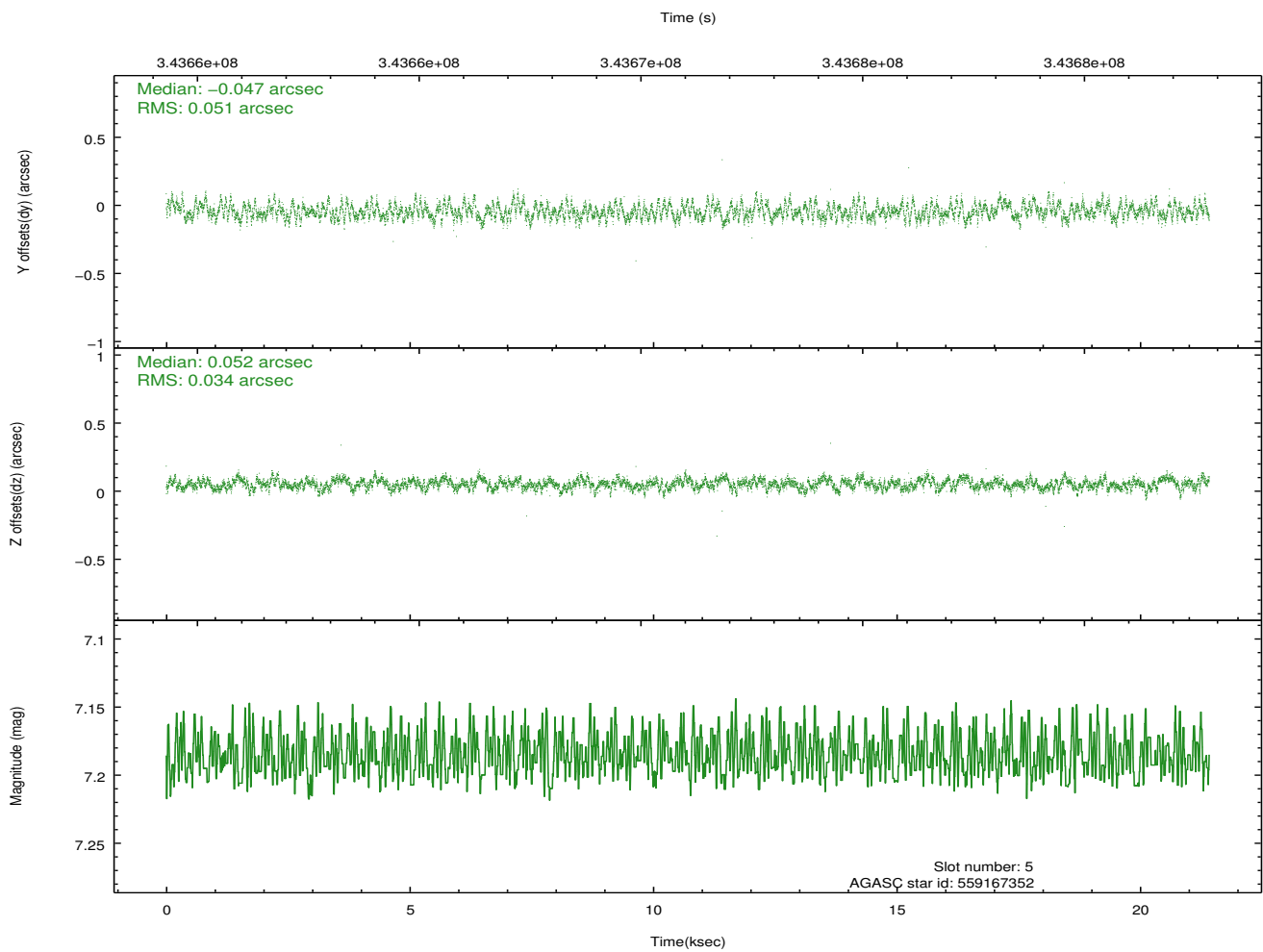
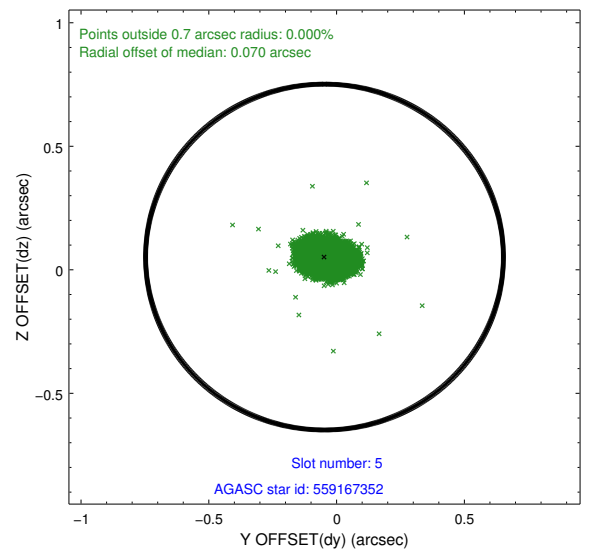
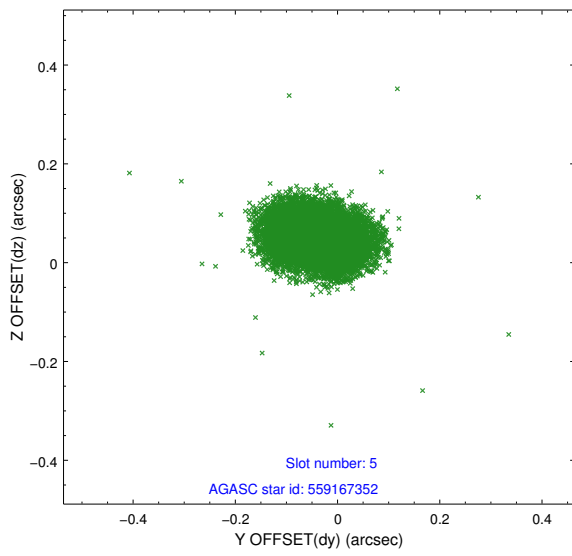
2.4.1 Slot 3



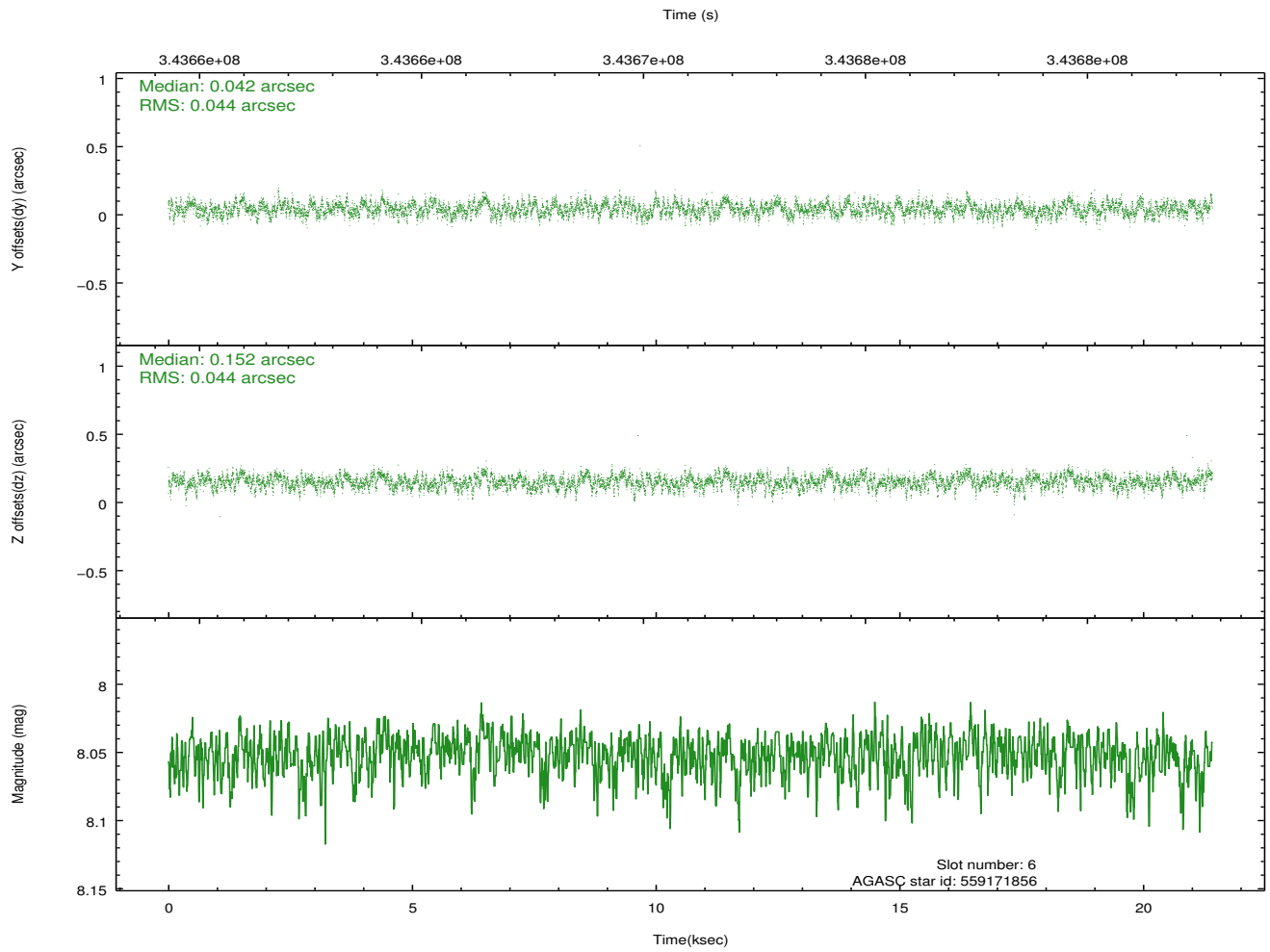
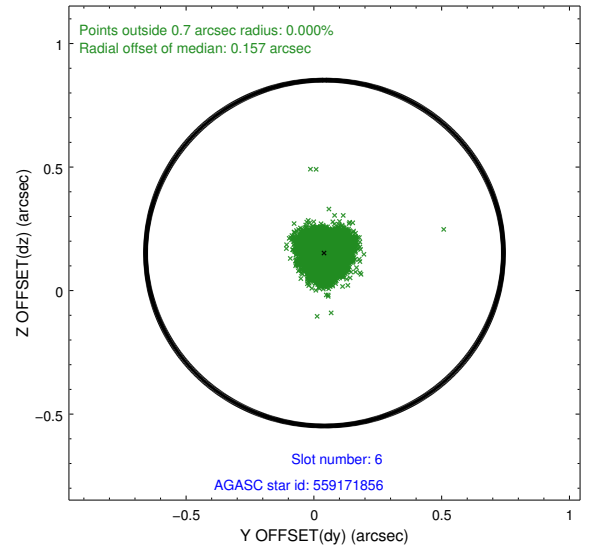
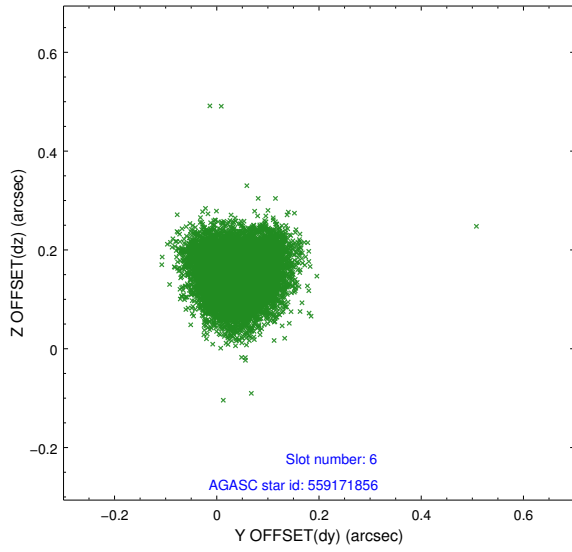
2.4.2 Slot 4



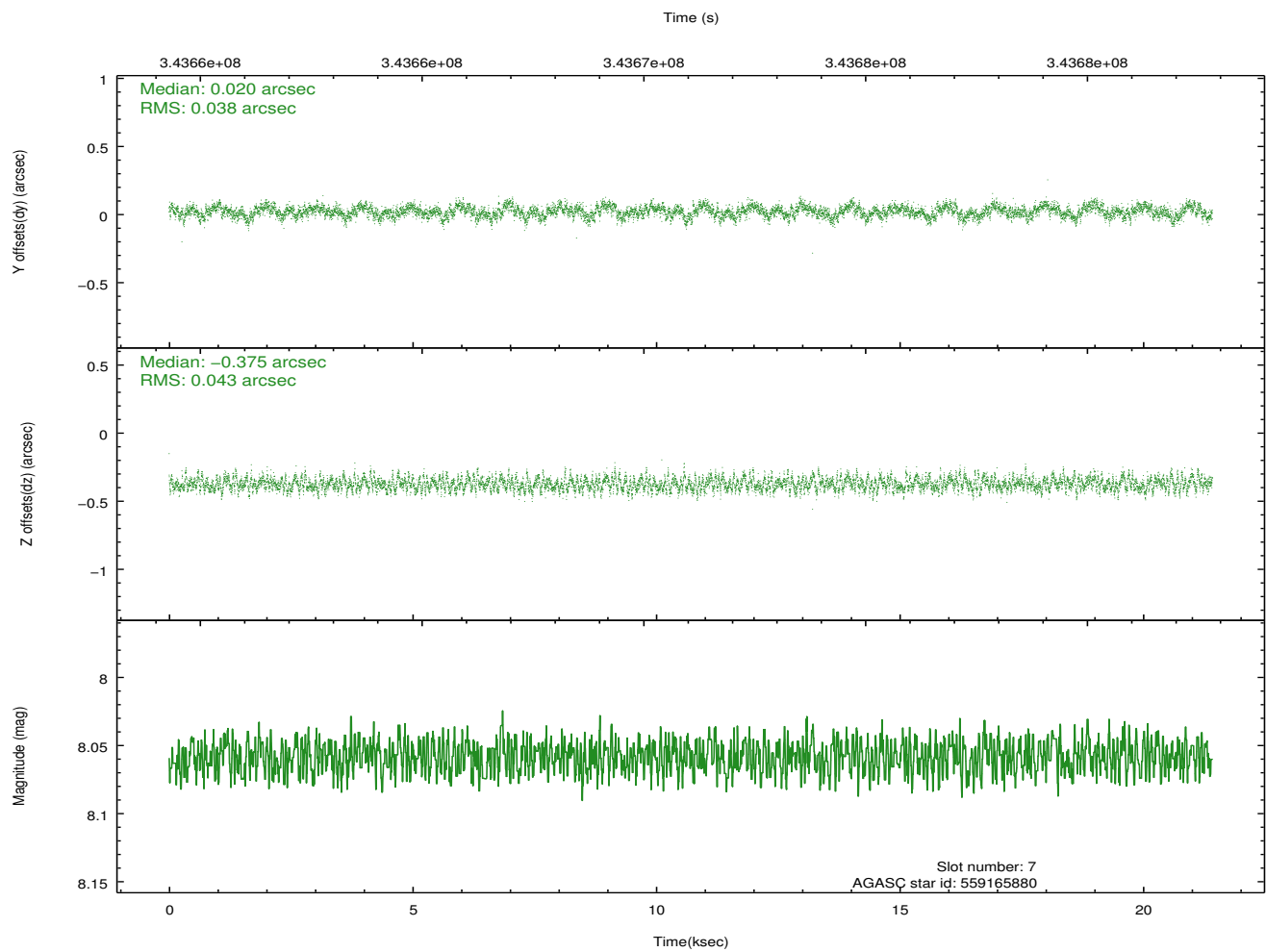
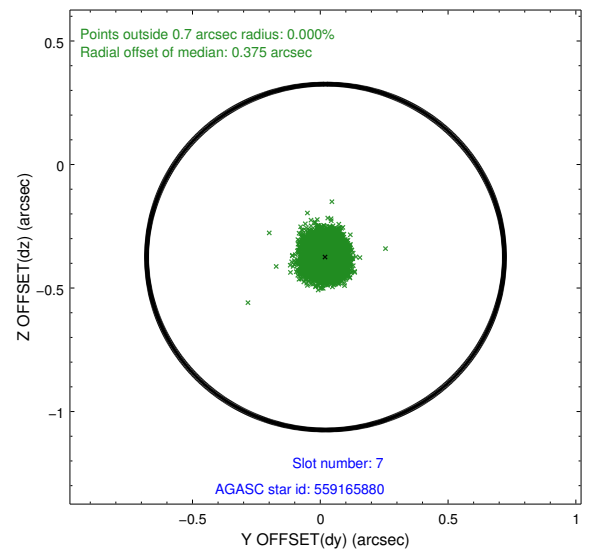
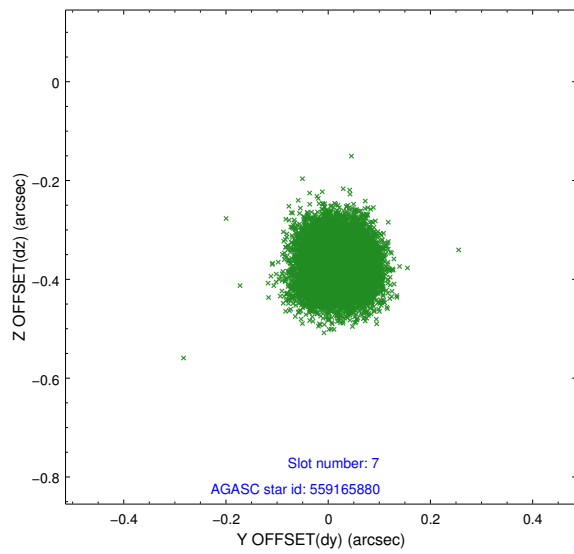
2.4.3 Slot 5



2.4.4 Slot 6

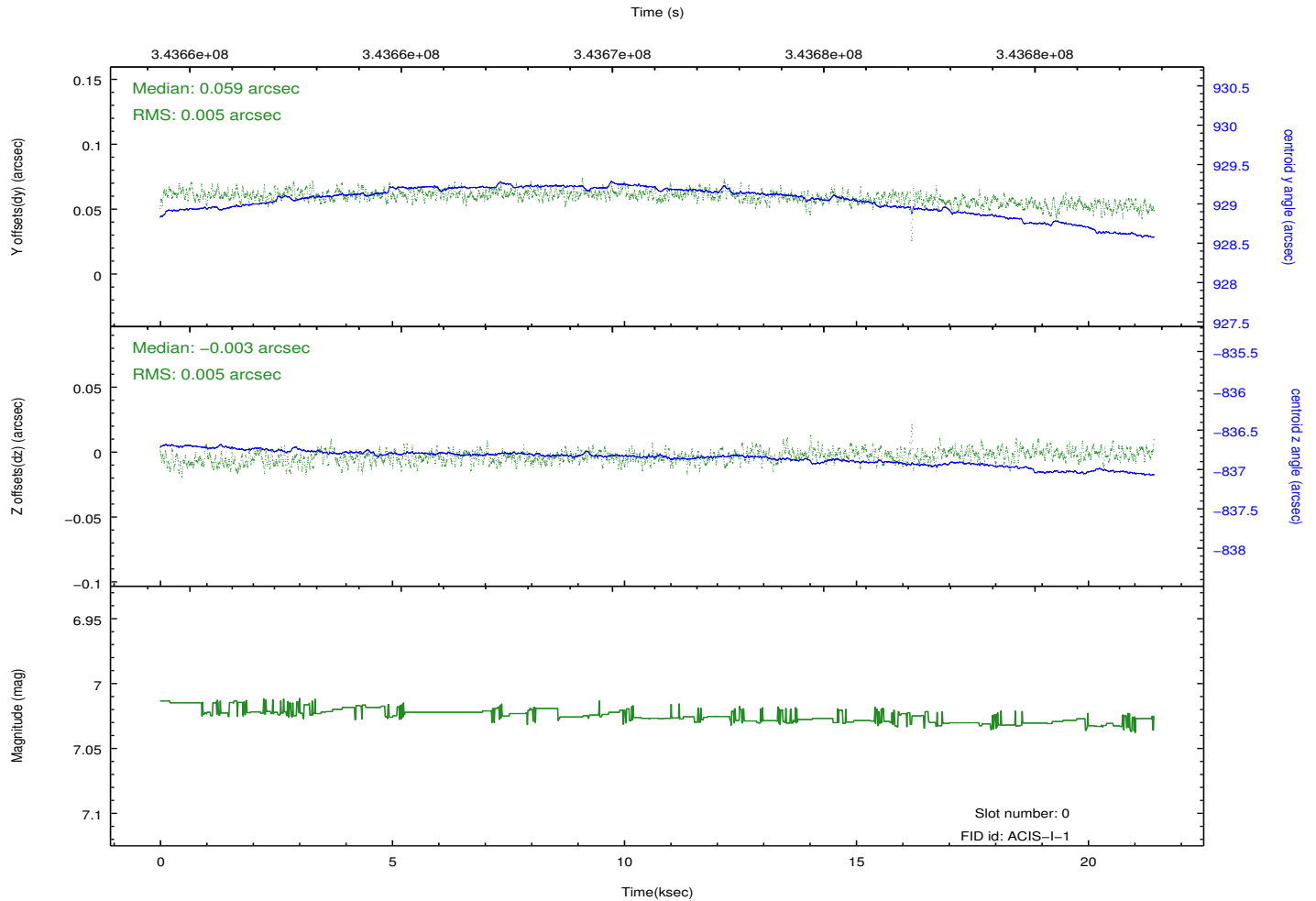
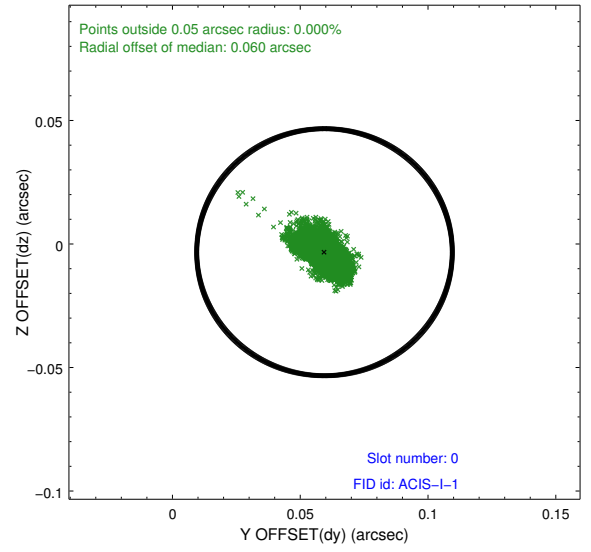
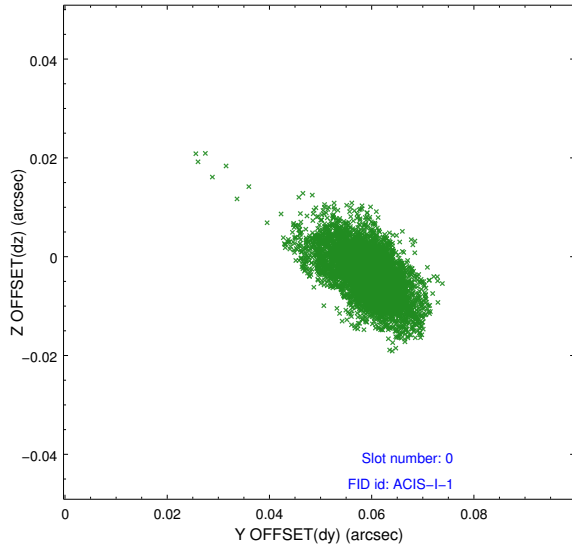


2.4.5 Slot 7

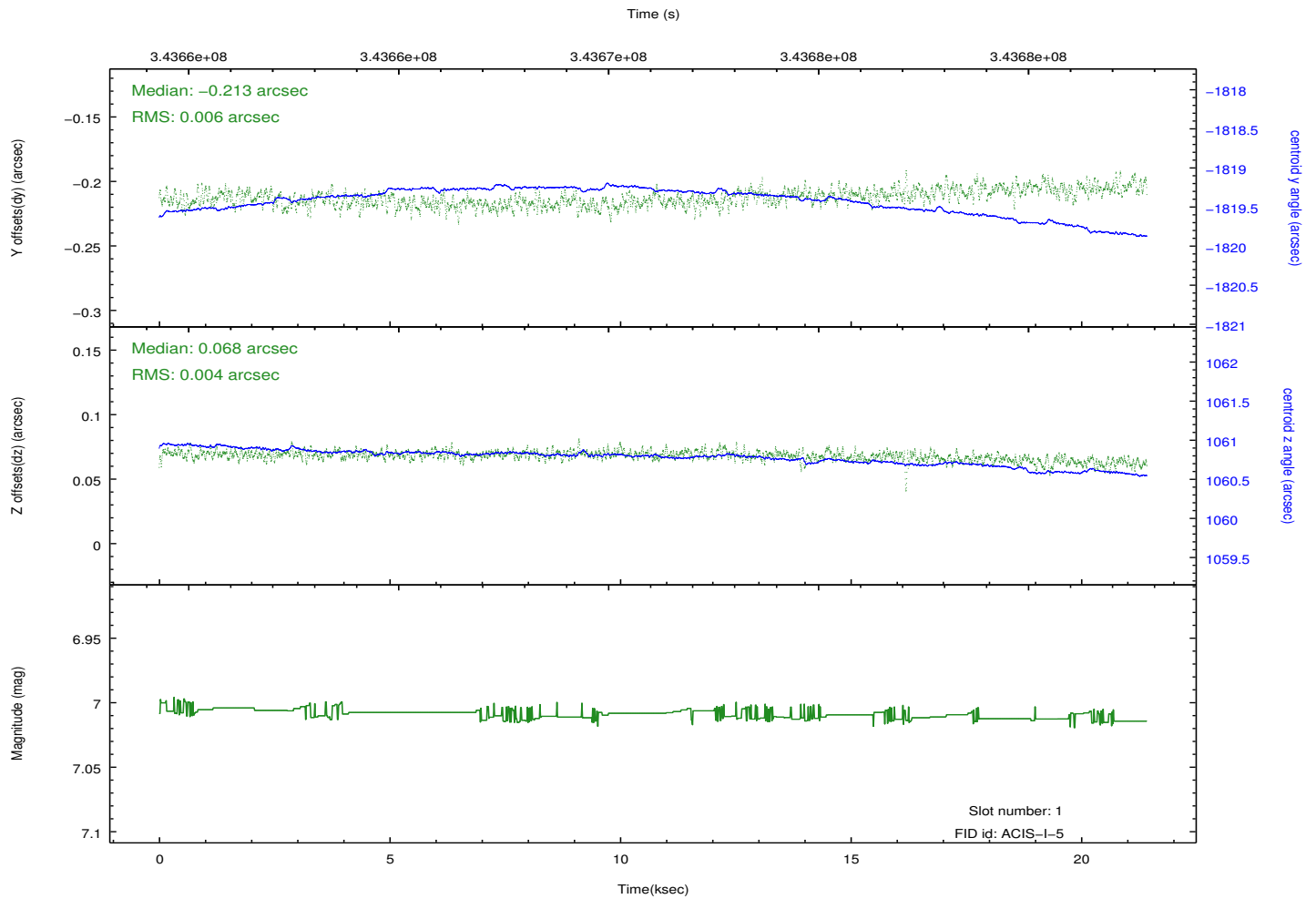
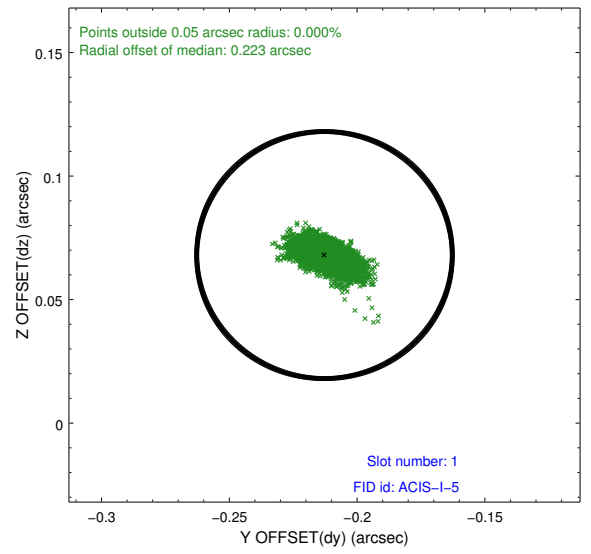
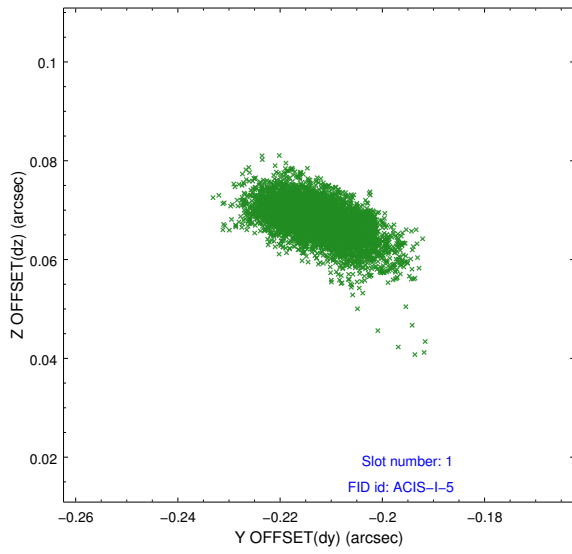


2.5 FID Slots

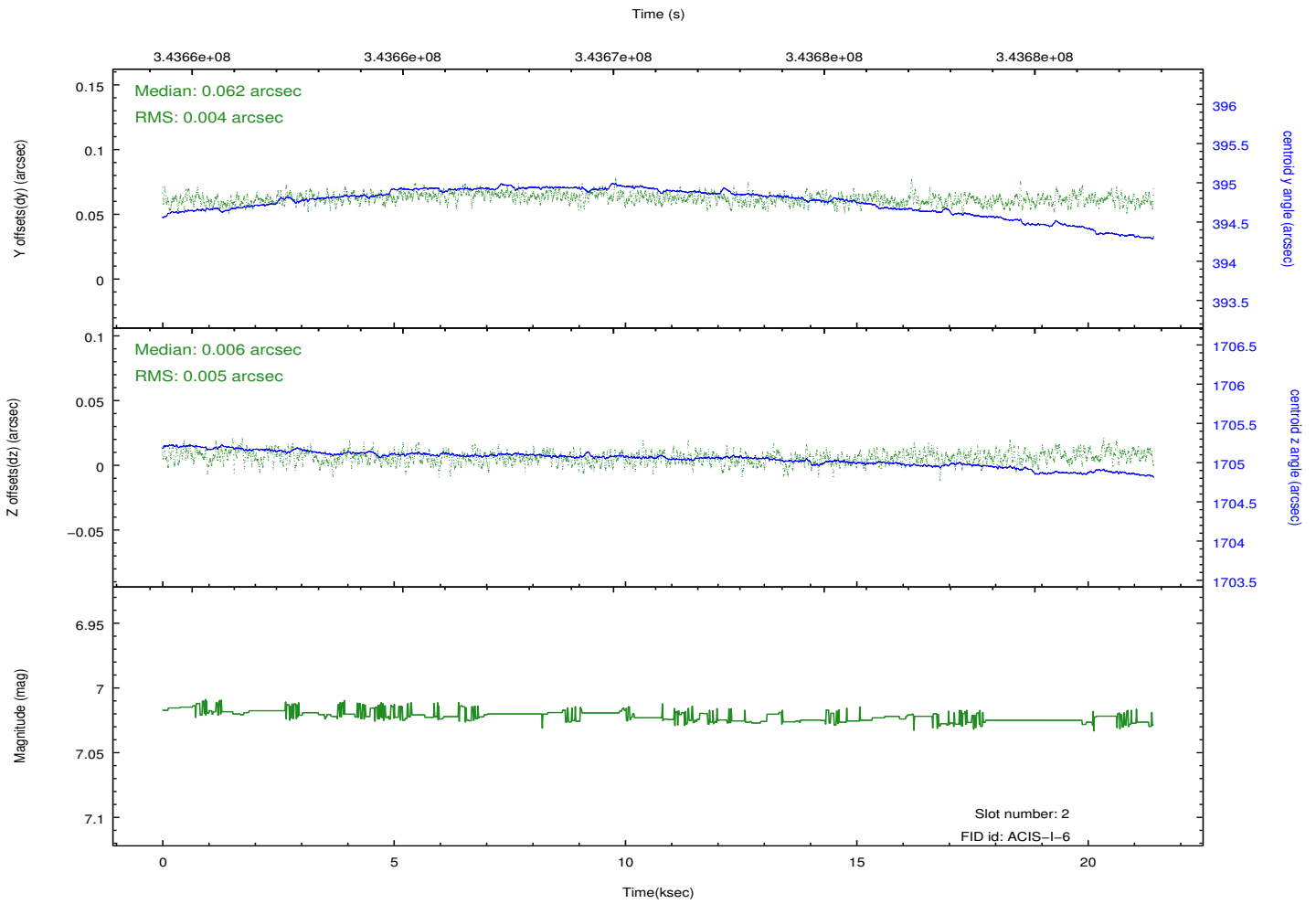
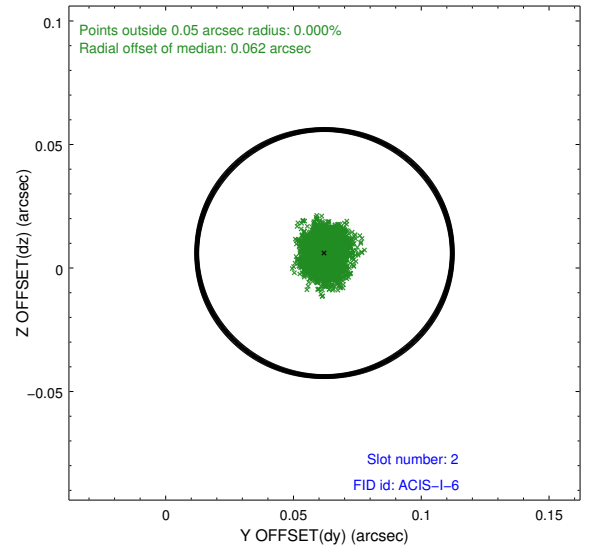
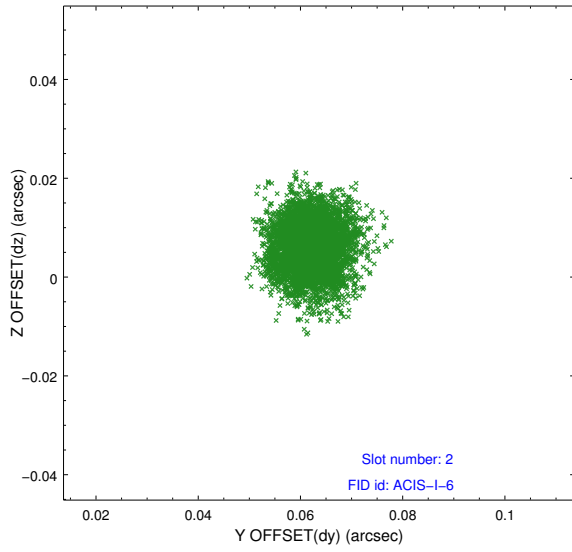
2.5.1 Slot 0



2.5.2 Slot 1



2.5.3 Slot 2



A Summary

A.1 Status

V&V Scientist	Jen Lauer
V&V Date (YYYY-MM-DD)	2012.05.31
V&V Edition	1
V&V Disposition and Status	OK
V&V Charge Time	20.9503999

A.2 Comments