

V&V Reference Report

L2 ASCDS Version : 8.4.5

Observation 10988 - L2 Version 2
Chandra X-Ray Center

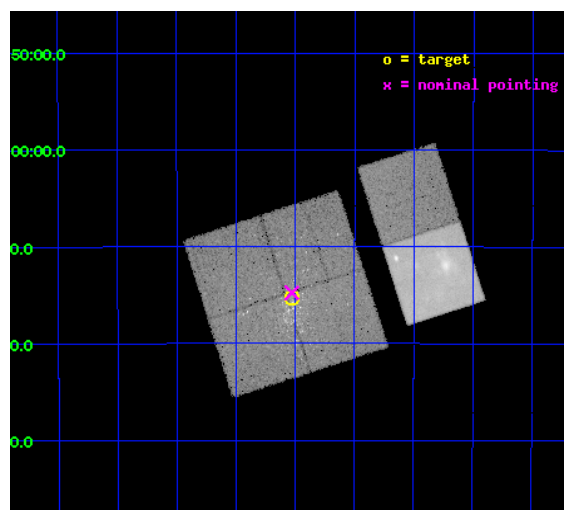
L2 Processing Date : Jun 25 2012

Contents

1	Front	2
2	OBI	3
2.1	OBI	3
2.1.1	Images	3
2.1.2	Bias	3
2.1.3	Parameters	4
2.1.4	Events	4
2.2	Compared Parameters	5
2.3	Aspect	6
2.4	Star Slots	9
2.4.1	Slot 3	9
2.4.2	Slot 4	10
2.4.3	Slot 5	11
2.4.4	Slot 6	12
2.4.5	Slot 7	13
2.5	FID Slots	14
2.5.1	Slot 0	14
2.5.2	Slot 1	15
2.5.3	Slot 2	16
A	Summary	17
A.1	Status	17
A.2	Comments	17

1 Front

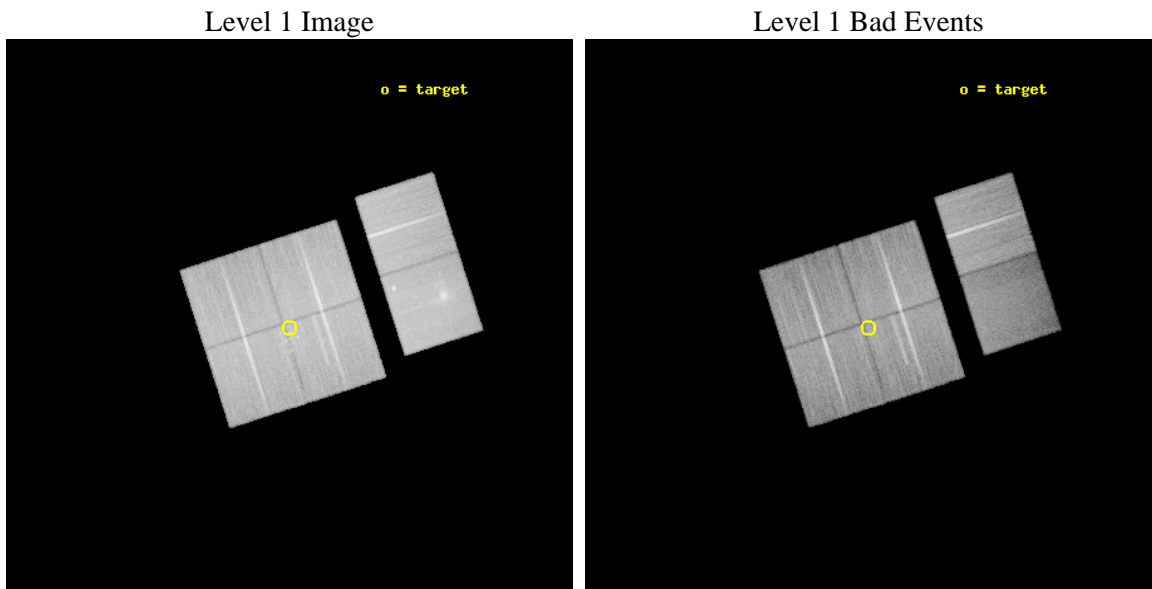
seq_num	200619	Sequence number
obs_id	10988	Observation id
title	A New Story for Massive Star Formation in NGC 6357	Proposal title
observer	Dr. Leisa Townsley	Principal investigator
object	G353.2+0.7	Source name
dtcycle	0	
cycle	P	events from which exps? Prim/Second/Both
ra_targ	261.507083	Observer's specified target RA [deg]
dec_targ	-34.254278	Observer's specified target Dec [deg]
ra_nom	261.50716353147	Nominal RA [deg]
dec_nom	-34.246196893808	Nominal Dec [deg]
roll_nom	72.186717809308	Nominal Roll [deg]
revision	2	Processing version of data
ontime	40159.876769245	Sum of GTIs [s]
livetime	39651.348228218	Livetime [s]
ontime0	40169.599850416	Sum of GTIs [s]
ontime1	40159.876759648	Sum of GTIs [s]
ontime2	40169.599850416	Sum of GTIs [s]
ontime3	40159.876769245	Sum of GTIs [s]
ontime6	40169.599850416	Sum of GTIs [s]
ontime7	40169.599850416	Sum of GTIs [s]
l2events	309183	Number of level 2 events



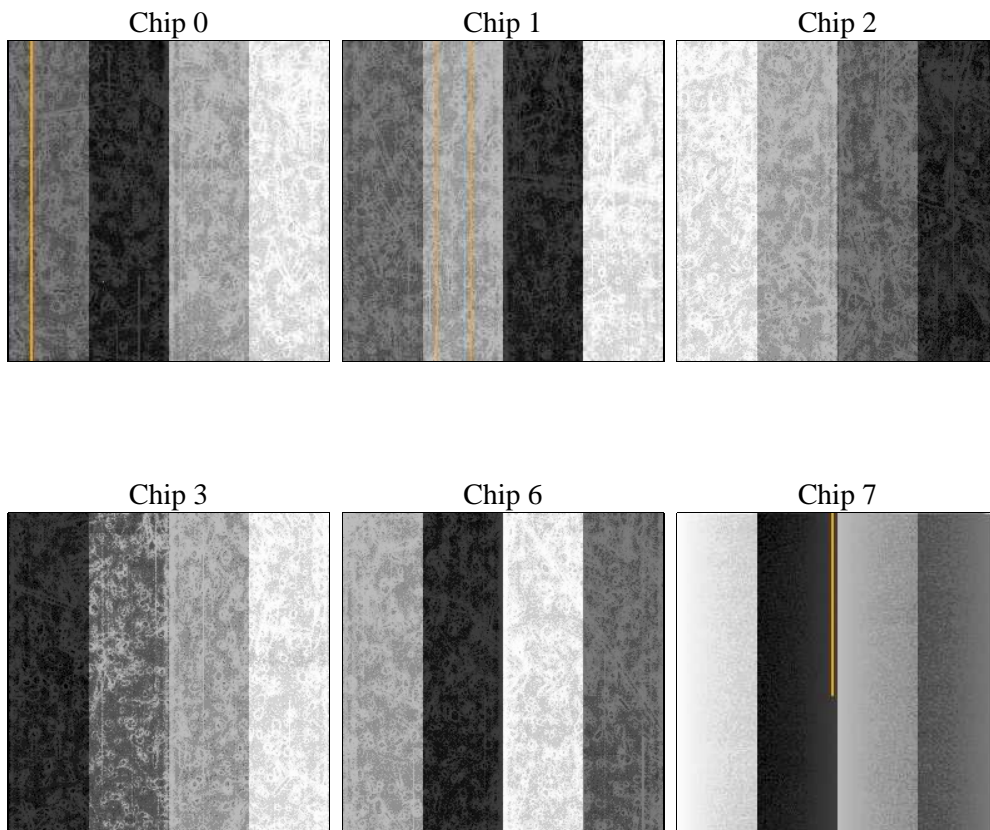
2 OBI

2.1 OBI

2.1.1 Images



2.1.2 Bias



2.1.3 Parameters

obi_num	0	Obi number	sched_exp_time	40000.000000	[s] Scheduled observation exposure time
ascdsver	8.4.5	Processing system revision	ontime	40159.876769245	Sum of GTIs [s]
caldbver	4.4.10	 	ontime0	40169.599850416	Sum of GTIs [s]
date	2012-06-25T11:04:14	Date and time of file creation	ontime1	40159.876759648	Sum of GTIs [s]
revision	2	Processing version of data	ontime2	40169.599850416	Sum of GTIs [s]
			ontime3	40159.876769245	Sum of GTIs [s]
			ontime6	40169.599850416	Sum of GTIs [s]
			ontime7	40169.599850416	Sum of GTIs [s]
			l1events	1757106	Number of level 1 events

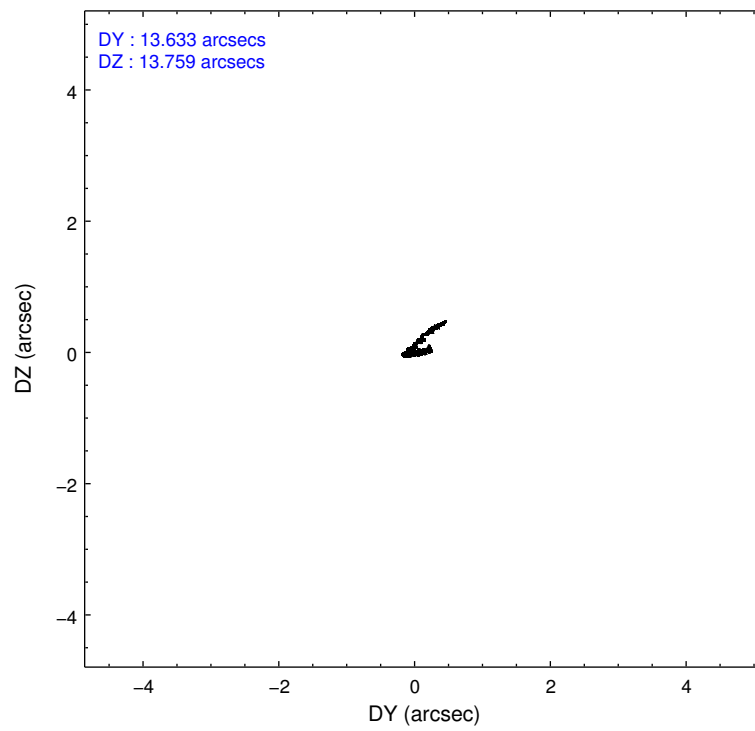
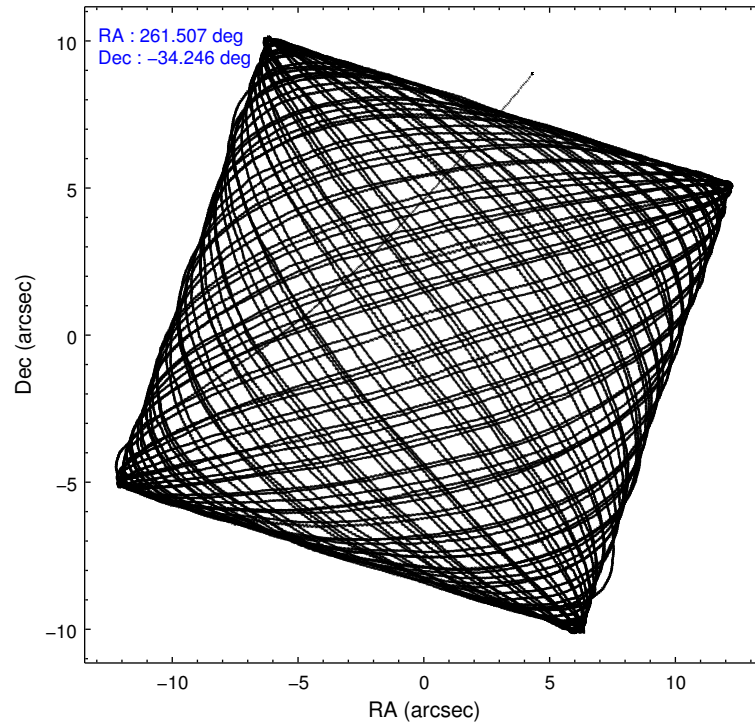
2.1.4 Events

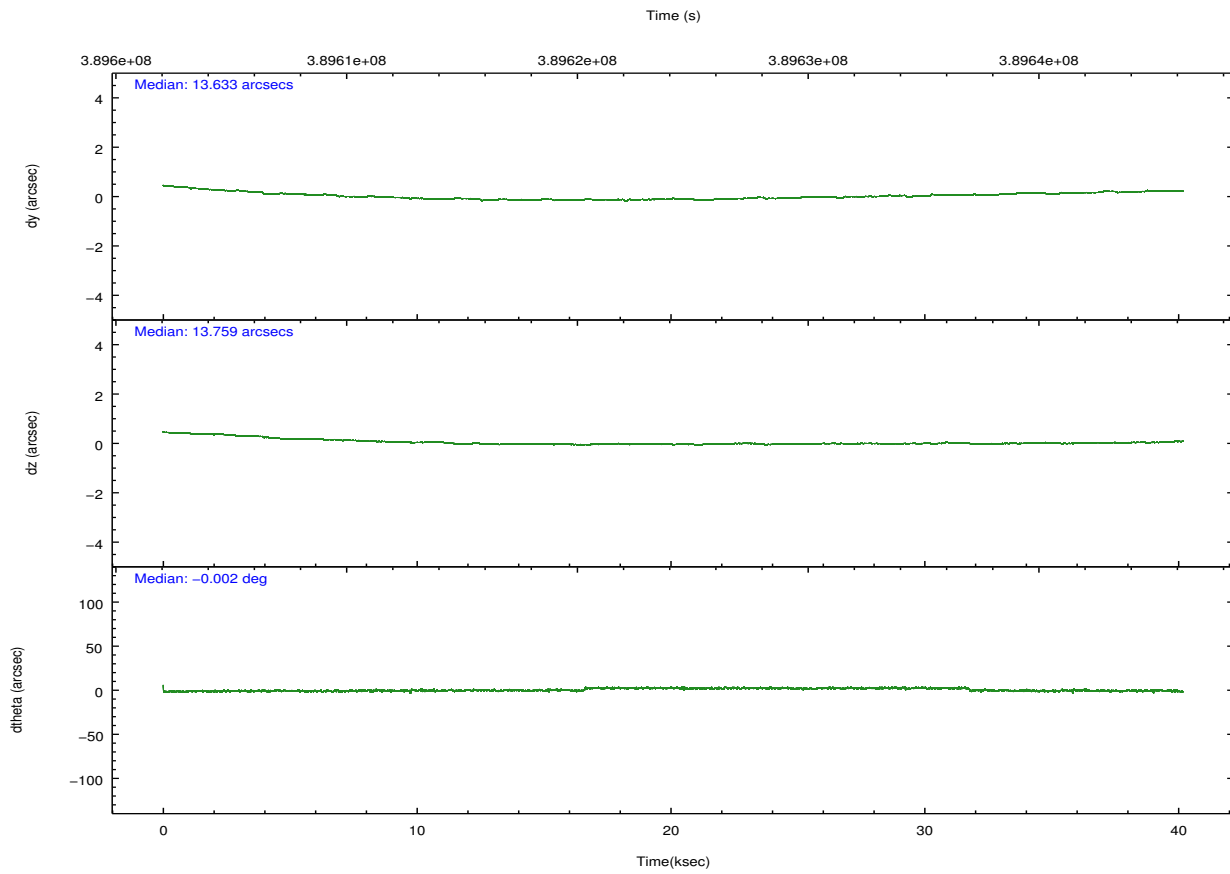
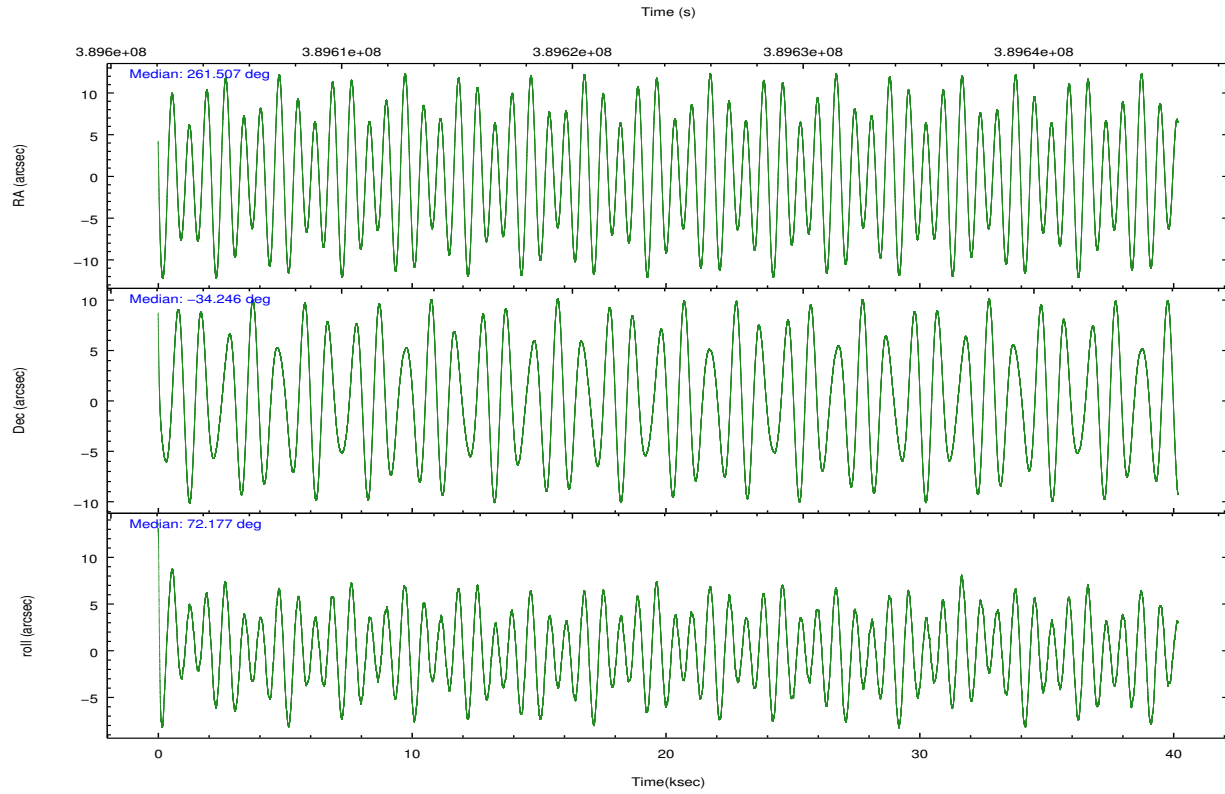
	ccd 0	ccd 1	ccd 2	ccd 3	ccd 6	ccd 7		ccd 0	ccd 1	ccd 2	ccd 3	ccd 6	ccd 7
level 1 events	265136	274838	297762	291576	299899	327895	grade 0 events	13221	17272	14703	17138	12827	21578
rejected events	232840	236463	264334	256179	267603	158958		4%	6%	4%	5%	4%	6%
rejected %	87%	86%	88%	87%	89%	48%	grade 1 events	192	215	188	246	175	475
								0%	0%	0%	0%	0%	0%
							grade 2 events	7789	8183	7779	6962	7467	38398
								2%	2%	2%	2%	2%	11%
							grade 3 events	3487	3813	3213	3412	3414	16716
								1%	1%	1%	1%	1%	5%
							grade 4 events	3132	3690	3356	3432	3237	16605
								1%	1%	1%	1%	1%	5%
							grade 5 events	9768	10680	9402	11063	11180	32332
								3%	3%	3%	3%	3%	9%
							grade 6 events	5824	6604	5543	5704	6528	80708
								2%	2%	1%	1%	2%	24%
							grade 7 events	221723	224381	253578	243619	255071	121083
								83%	81%	85%	83%	85%	36%

2.2 Compared Parameters

Parameter	Planned	Actual	Parameter	Planned	Actual
Instrument	ACIS	ACIS	Obspar format version number	7	7
Detector	ACIS-012367	ACIS-012367	Obspar file type	PREDICTED	ACTUAL
Grating	NONE	NONE	Obspar update status	NONE	UPDATED
Data mode	VFAINT	VFAINT	CCD I0 on	Y	Y
Observation mode	POINTING	POINTING	CCD I1 on	Y	Y
[deg] Pointing RA	261.514332	261.5071635314696	CCD I2 on	Y	Y
[deg] Pointing Dec	-34.273056	-34.24619689380771	CCD I3 on	Y	Y
[deg] Pointing Roll	71.982057	72.18671780930831	CCD S0 on	N	N
[mm] SIM focus pos	-0.782348	-0.7809083437167272	CCD S1 on	N	N
[mm] SIM defocus	0	0.001439871863259334	CCD S2 on	O2	Y
[mm] SIM translation stage pos	-233.592463	-233.5874344608287	CCD S3 on	O1	Y
[mm] SIM translation stage offset	0	-0.005018542100998502	CCD S4 on	N	N
[s] Observation start time (MET)	389604232.184000	389602468.25267	CCD S5 on	N	N
Observation start date	2010-05-07T07:22:46	2010-05-07T06:54:28	Number of optional ACIS chips dropped	0	0
[s] Observation end time (MET)	389644232.184000	389645019.07984	On-chip summing requested	N	N
Observation end date	2010-05-07T18:29:26	2010-05-07T18:43:39	Subarray requested	NONE	NONE
Read mode	TIMED	TIMED	Alternating exposures requested	N	N
			[s] Primary exposure time	0.000000	3.2

2.3 Aspect



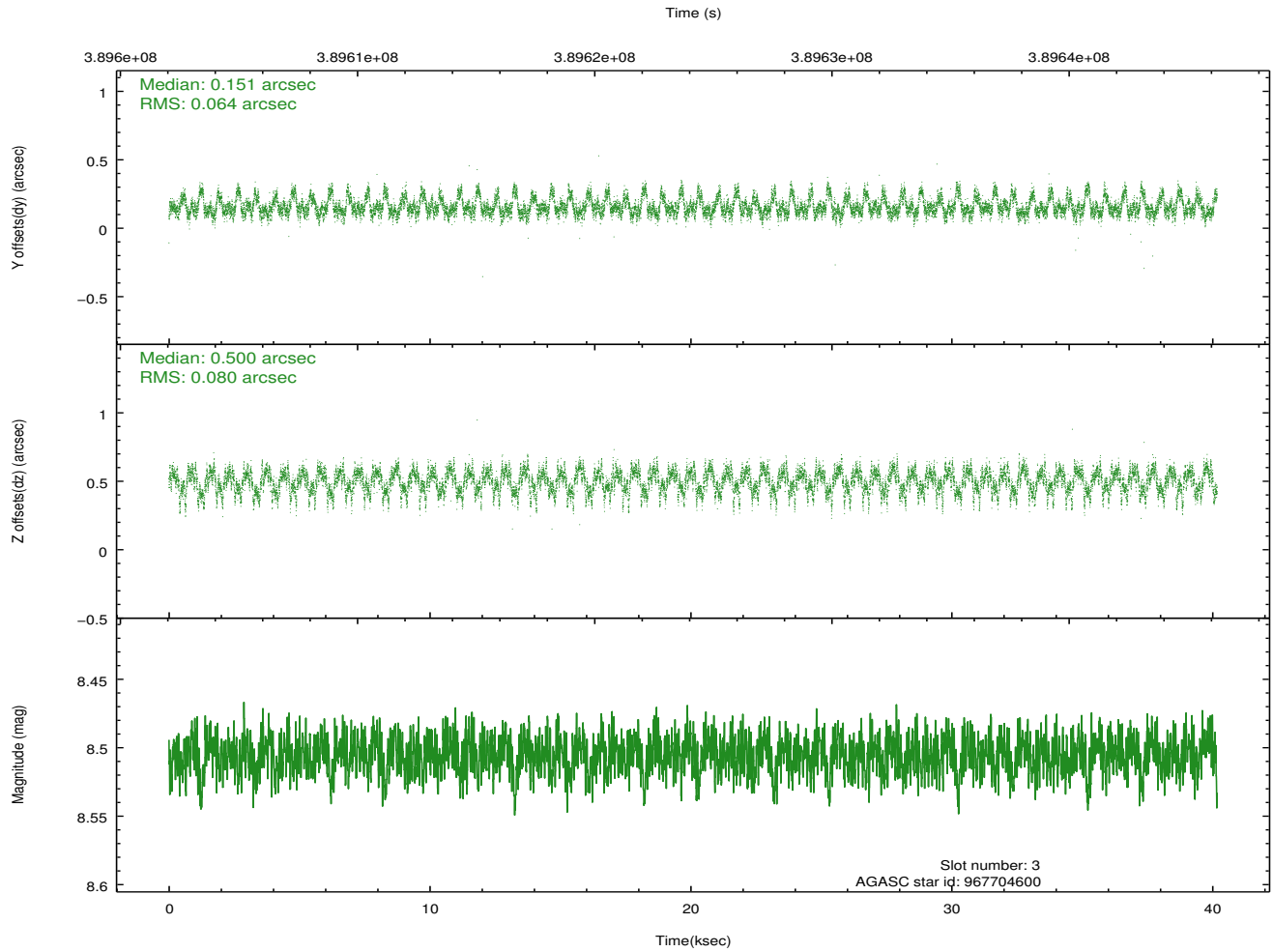
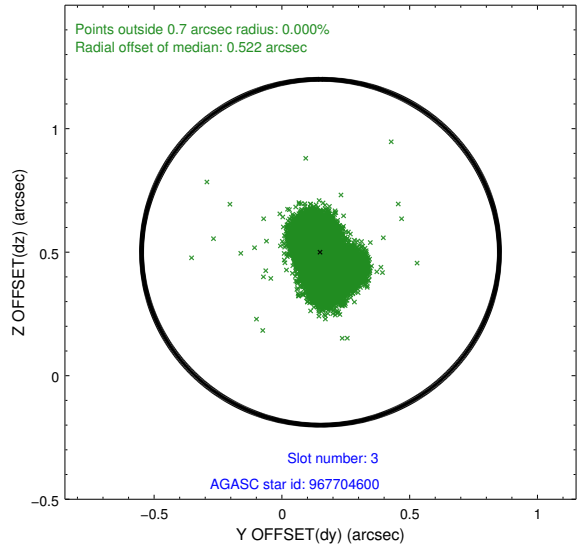
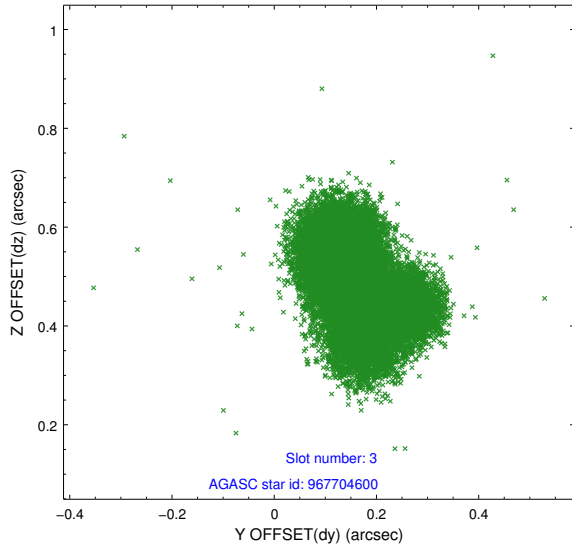


Slot Statistics

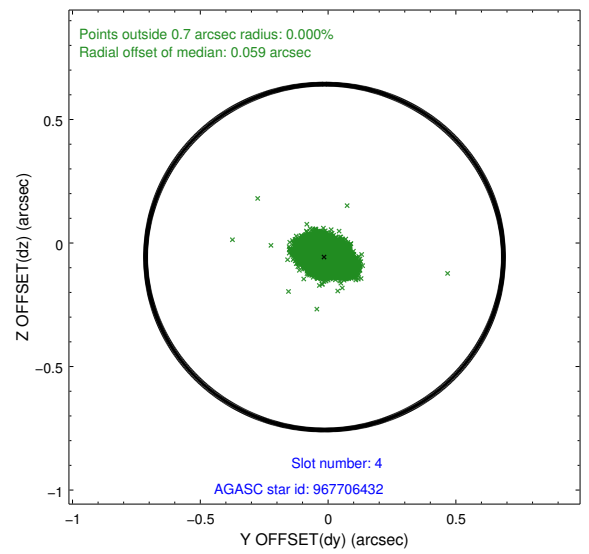
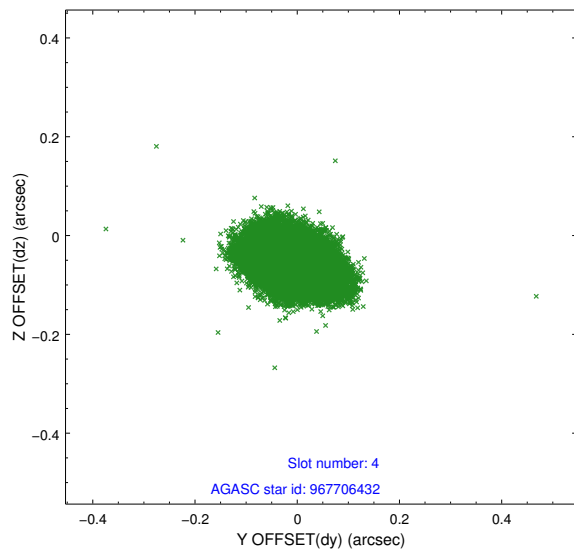
slot	status	id	mag	n_pts	med_dy	med_dz	dr1	dr2	ra	dec	mean_y	mean_z
0	FID	ACIS-I-2	6.97	9799	-0.089	-0.054	0.016	0.032	0.000000	0.000000	-768.43	-843.79
1	FID	ACIS-I-4	6.97	9799	0.227	0.069	0.012	0.021	0.000000	0.000000	2145.95	1062.48
2	FID	ACIS-I-5	7.04	9797	-0.237	0.054	0.013	0.021	0.000000	0.000000	-1822.37	1060.35
3	GUIDE	967704600	8.51	19596	0.151	0.500	0.111	0.173	262.063091	-34.610970	-657.96	-1923.47
4	GUIDE	967706432	6.71	19597	-0.014	-0.057	0.062	0.102	261.306065	-34.429958	-729.50	412.88
5	GUIDE	967708760	7.41	19598	0.650	0.025	0.066	0.103	261.328301	-34.249213	-89.97	552.73
6	GUIDE	967711376	7.03	19595	-0.993	-0.201	0.060	0.097	261.036431	-34.798453	-2240.32	756.87
7	GUIDE	967185672	8.48	19591	0.183	-0.262	0.089	0.140	261.333798	-33.528926	2378.98	1343.92

2.4 Star Slots

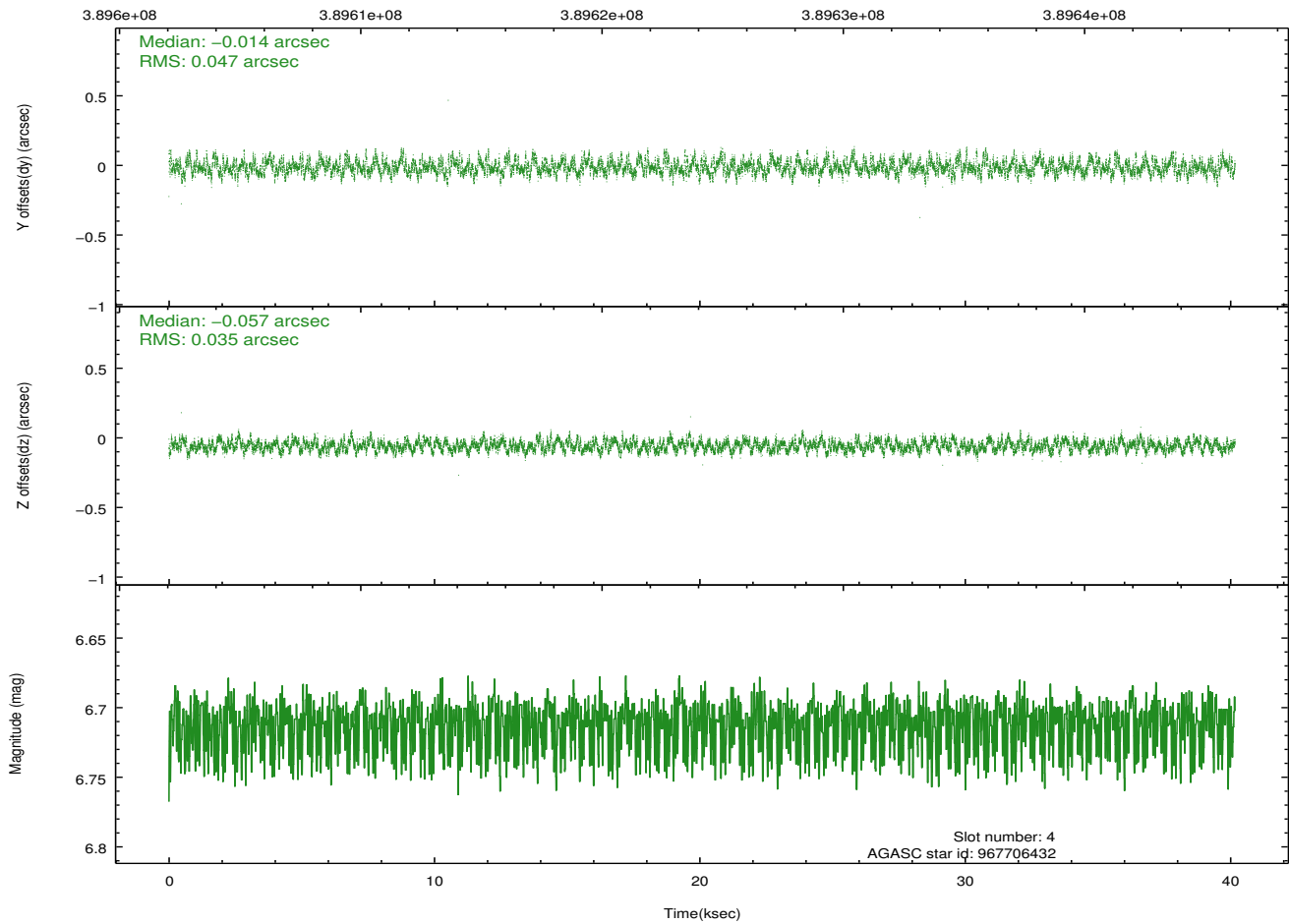
2.4.1 Slot 3



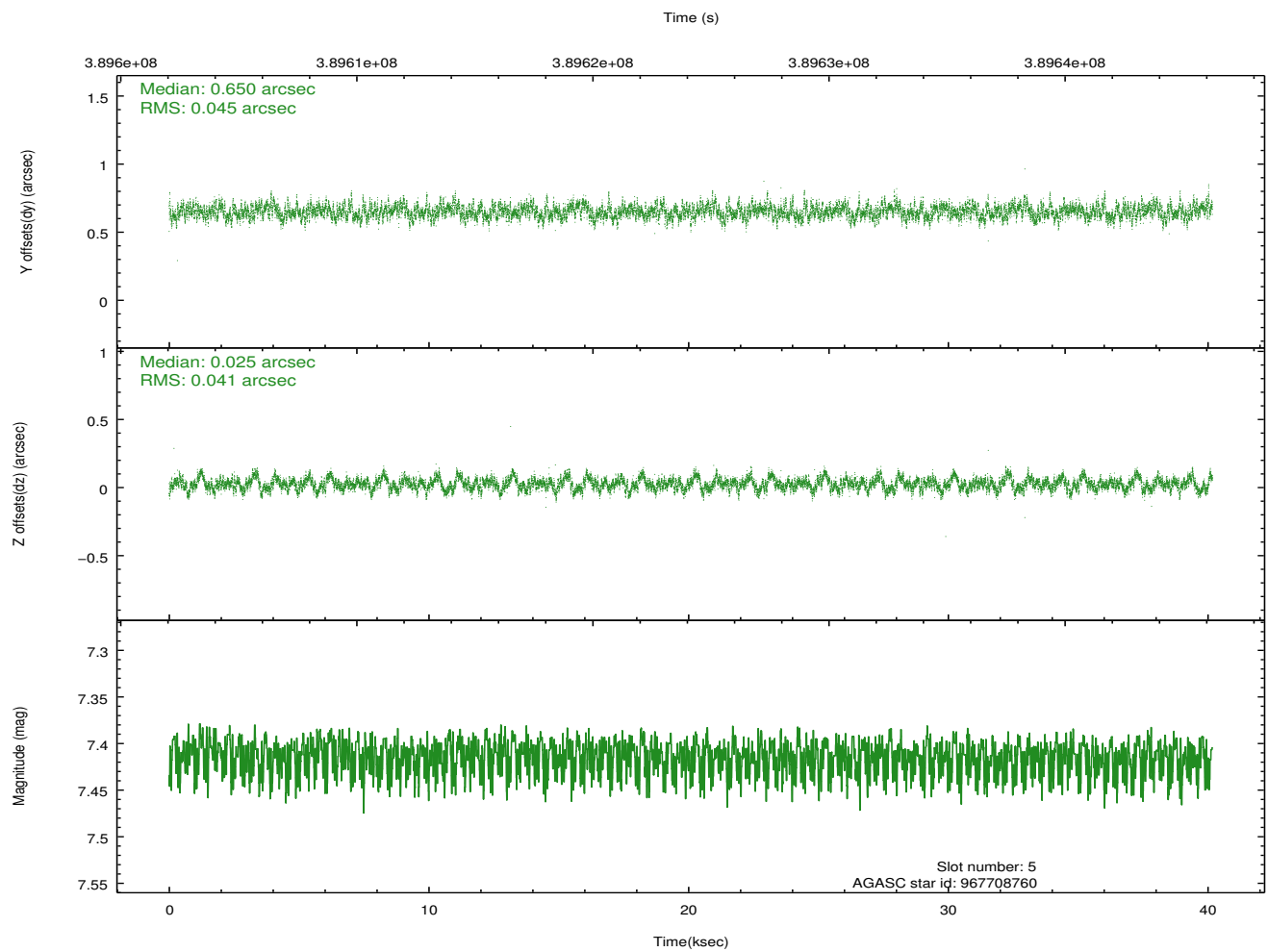
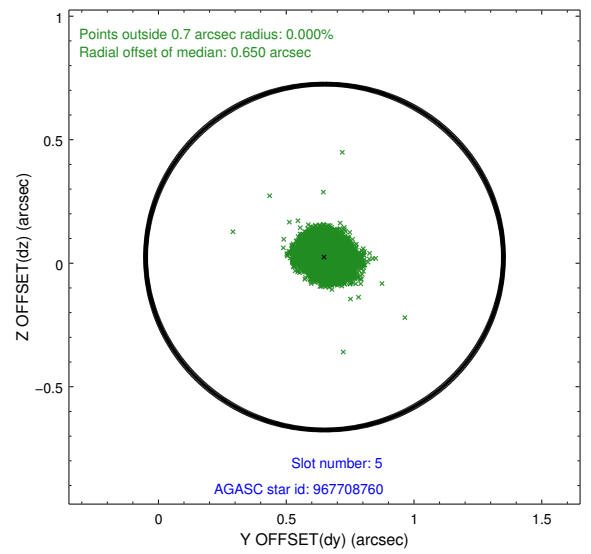
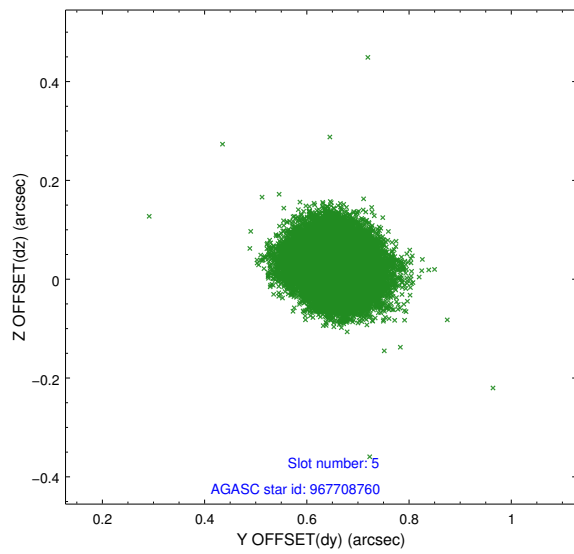
2.4.2 Slot 4



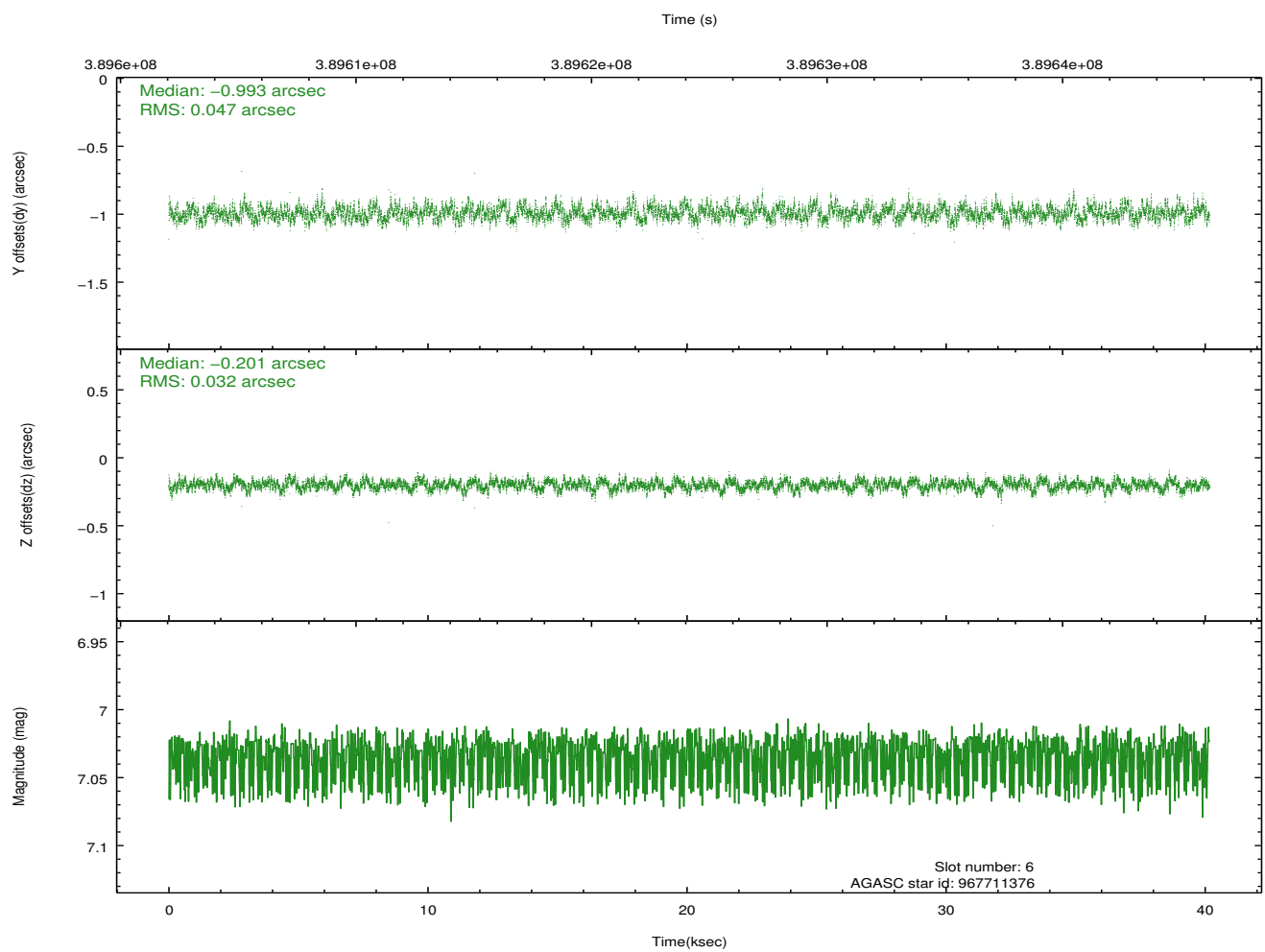
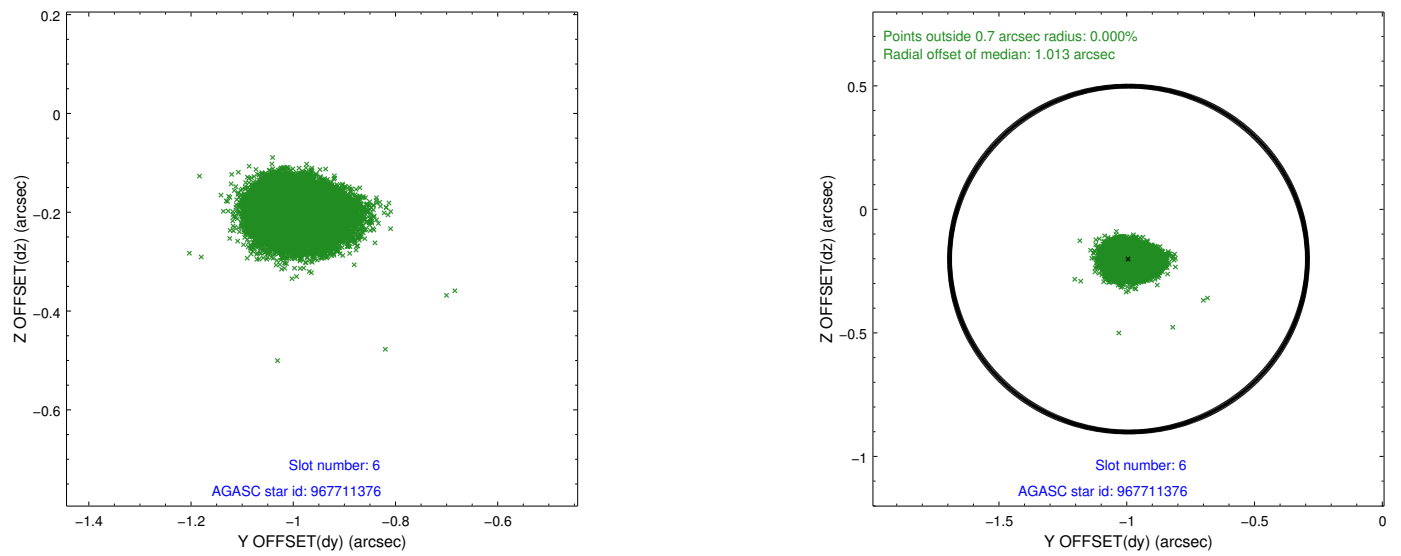
Time (s)



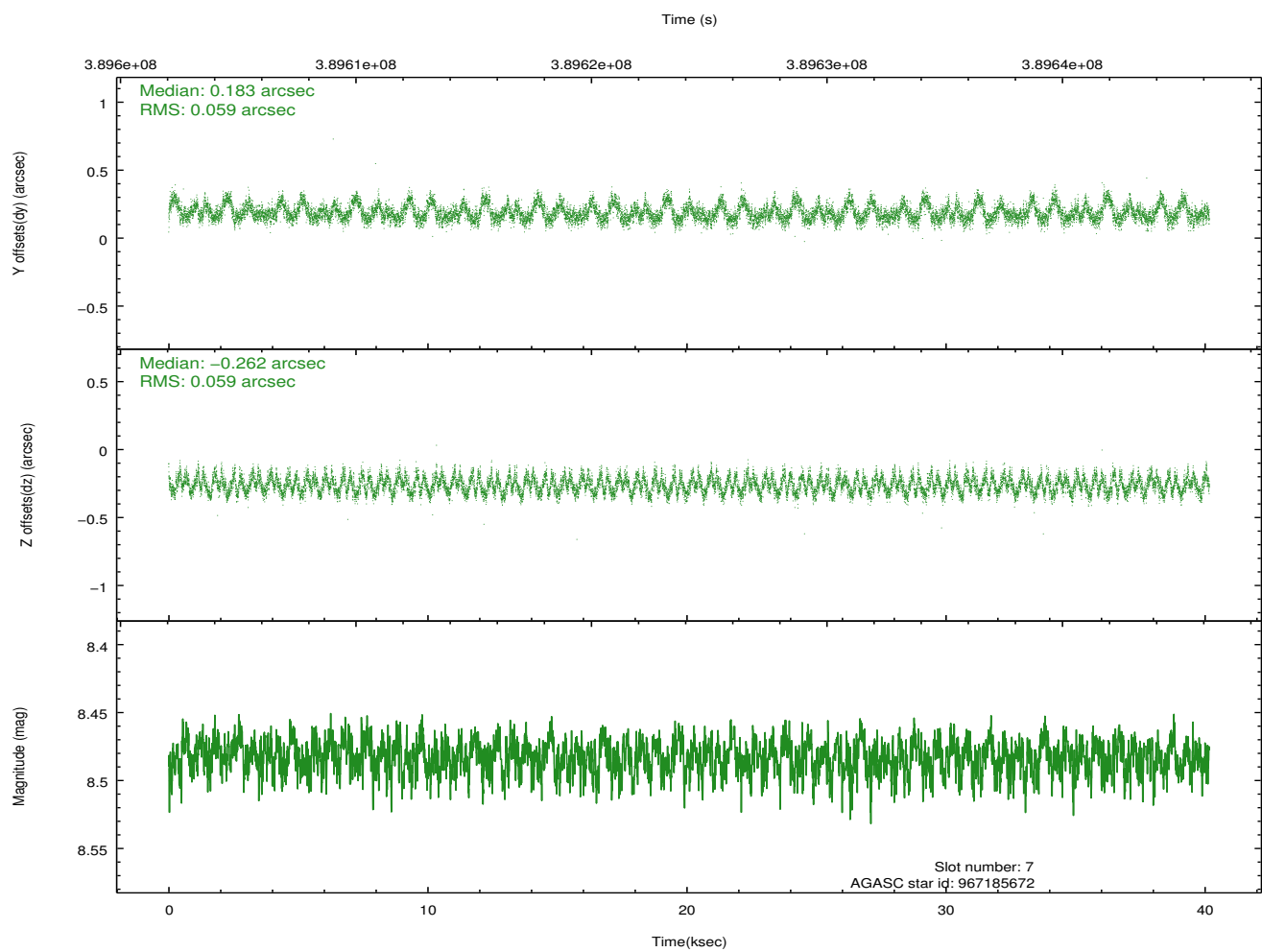
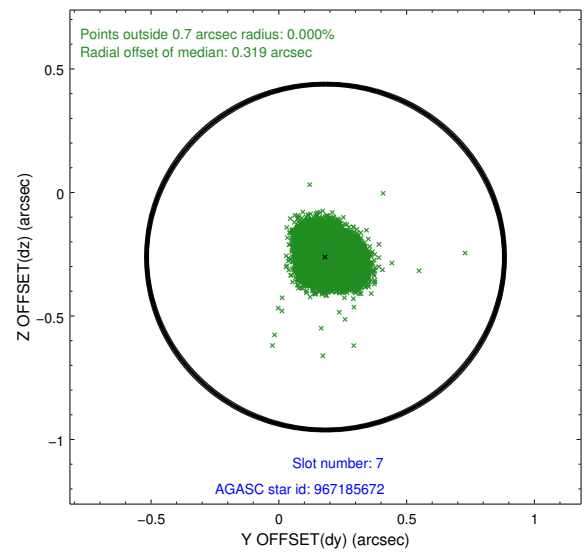
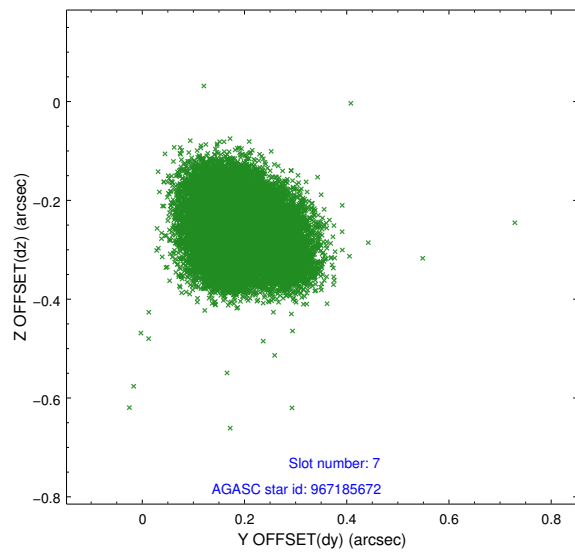
2.4.3 Slot 5



2.4.4 Slot 6

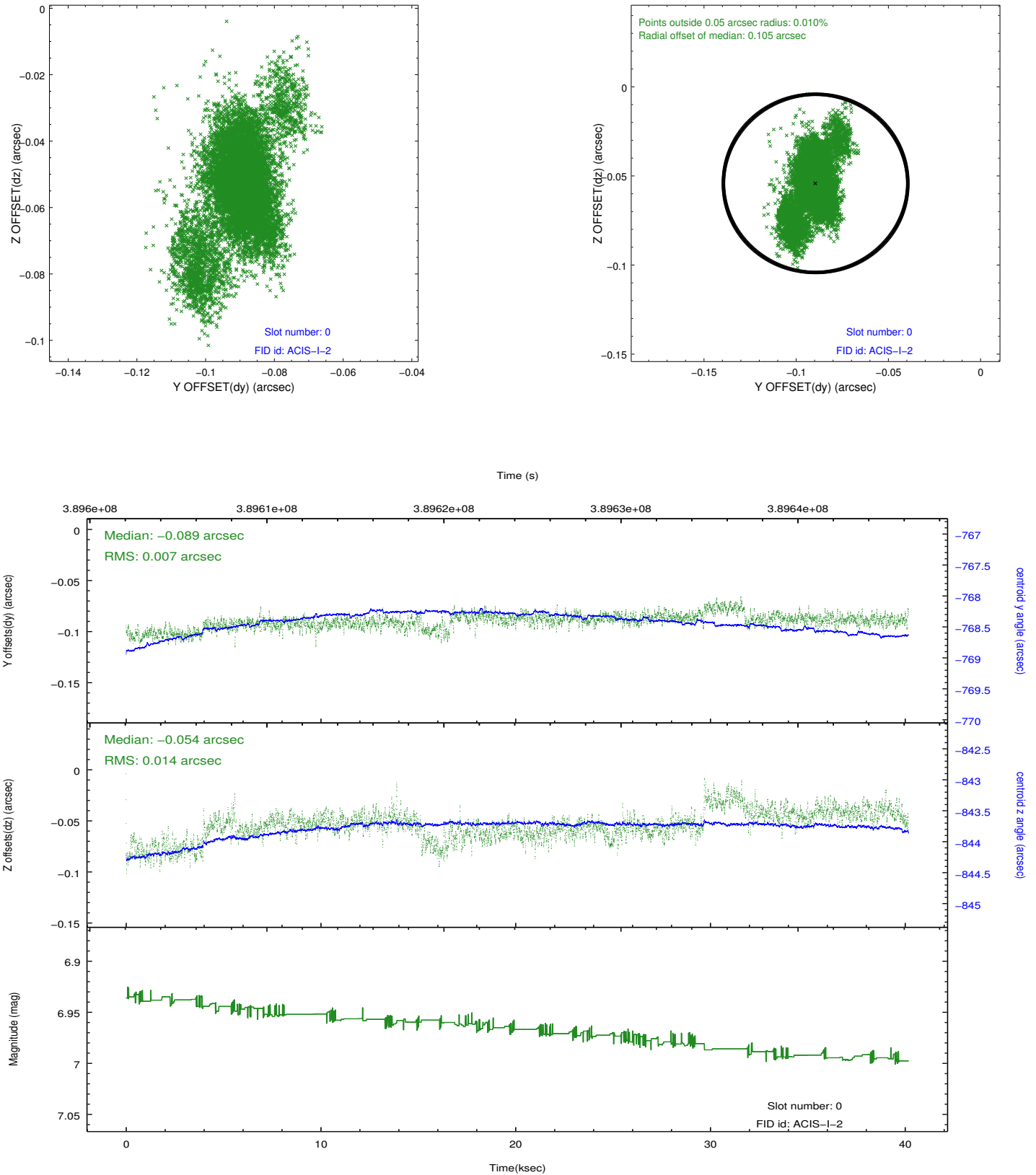


2.4.5 Slot 7

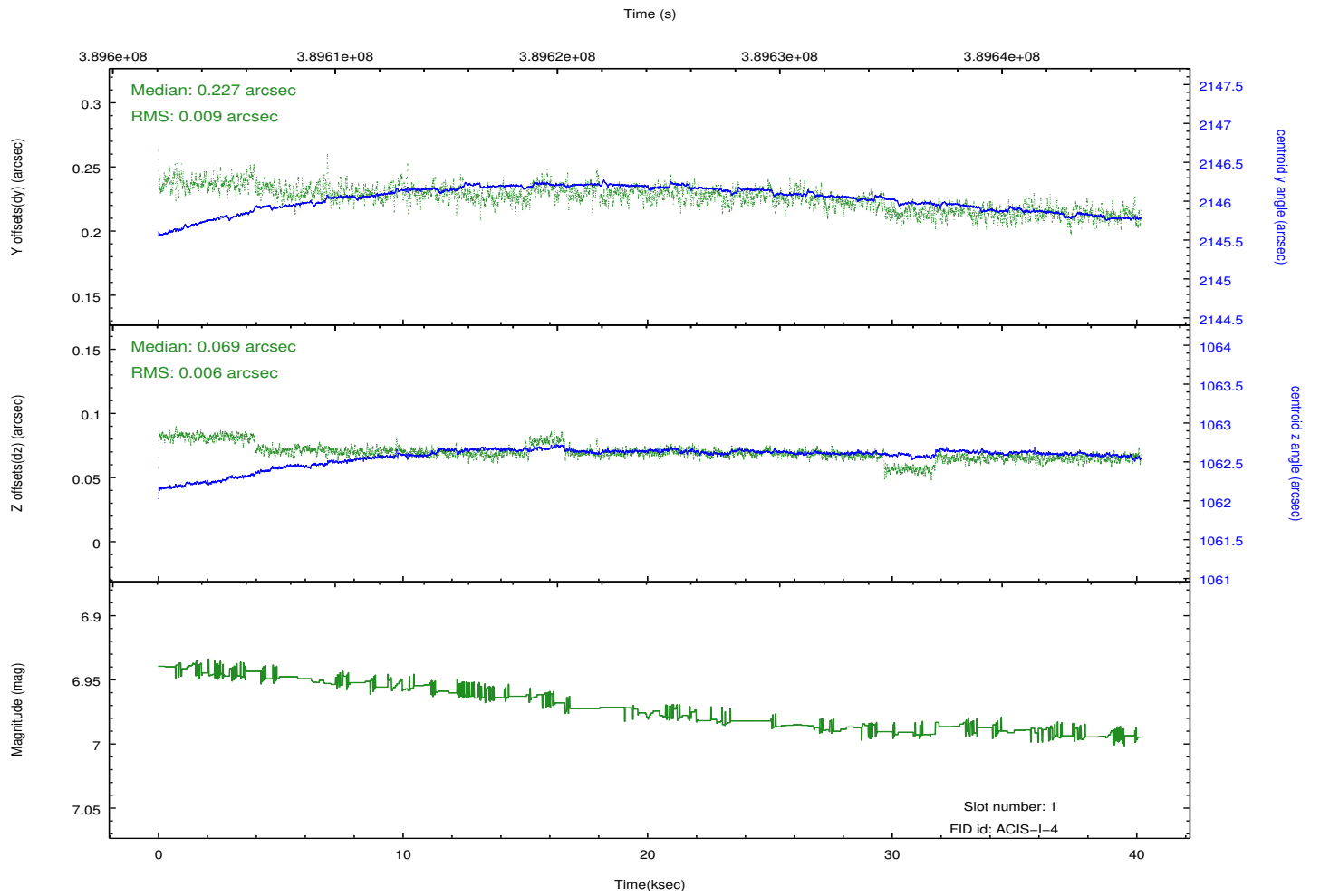
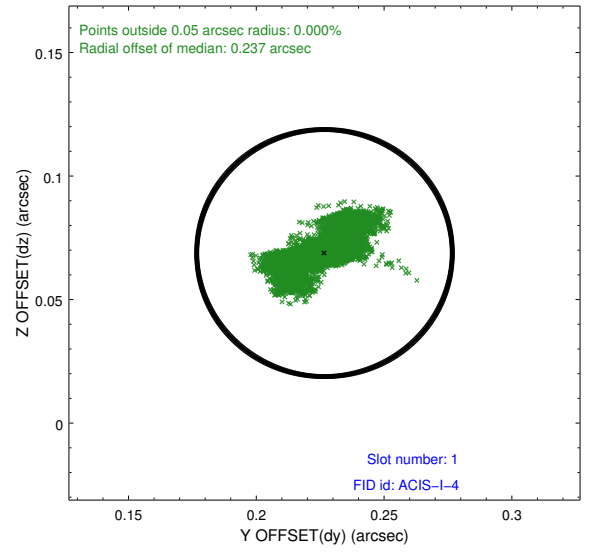
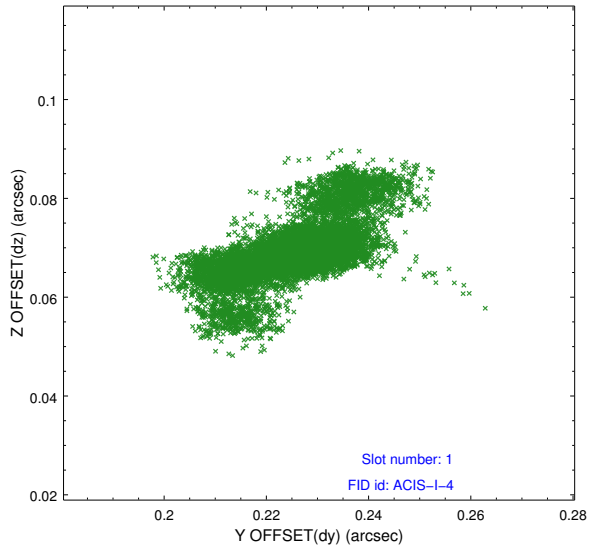


2.5 FID Slots

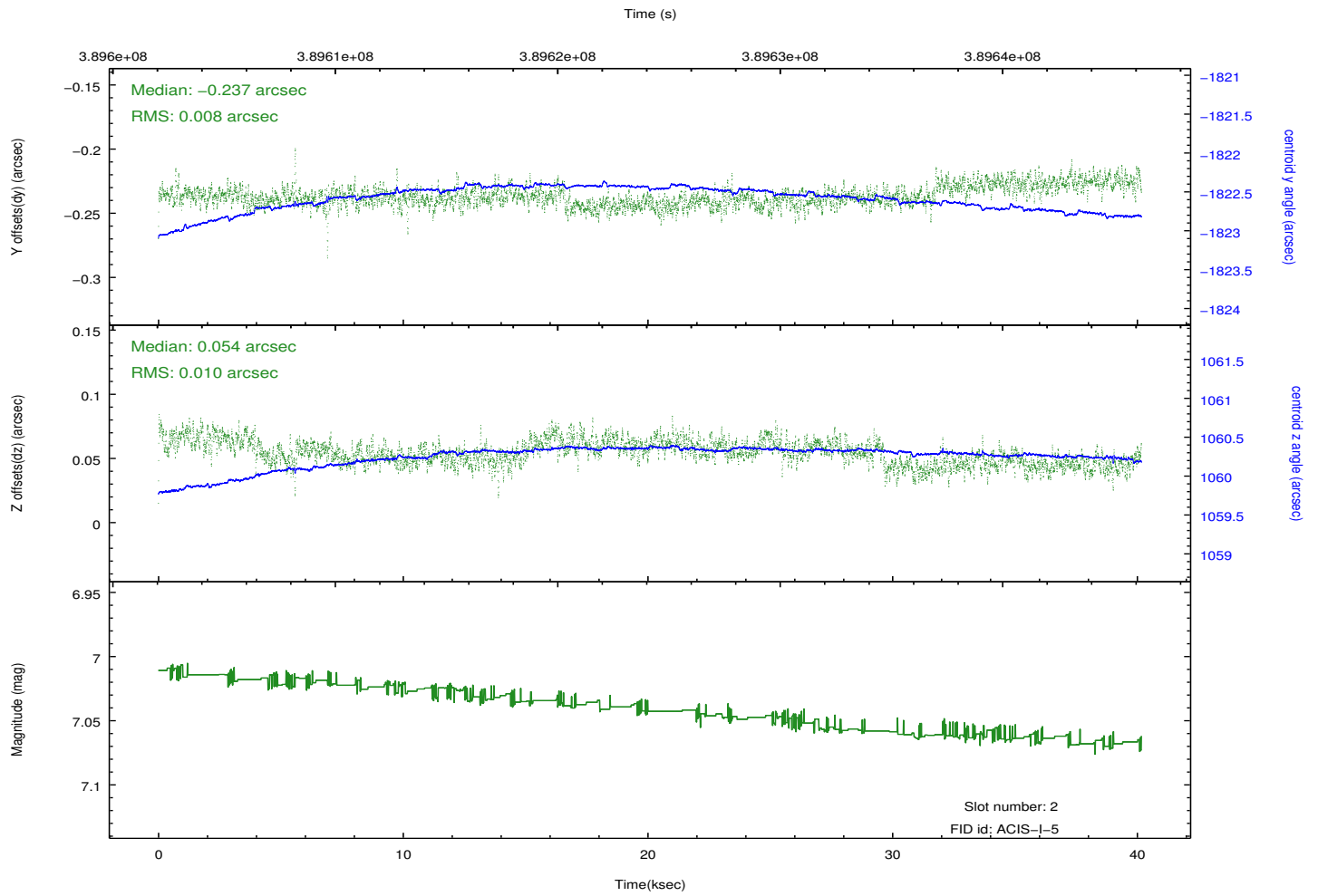
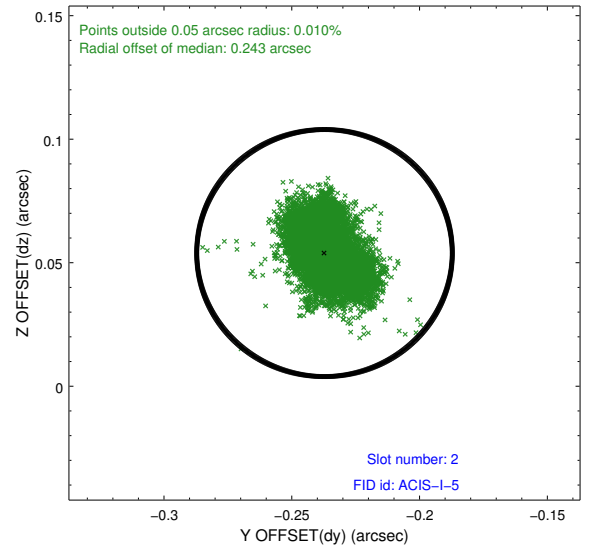
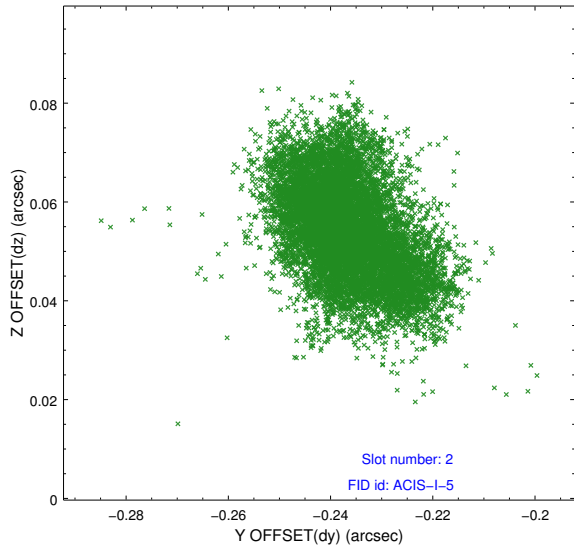
2.5.1 Slot 0



2.5.2 Slot 1



2.5.3 Slot 2



A Summary

A.1 Status

V&V Scientist	Jen Lauer
V&V Date (YYYY-MM-DD)	2012.07.02
V&V Edition	1
V&V Disposition and Status	OK
V&V Charge Time	40.159876769304

A.2 Comments