

V&V Reference Report

L2 ASCDS Version : 8.4.5

Observation 11368 - L2 Version 2
Chandra X-Ray Center

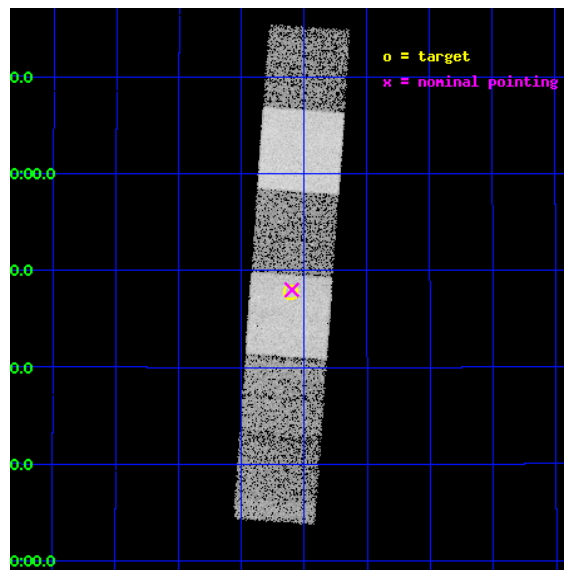
L2 Processing Date : Jun 19 2012

Contents

1	Front	2
2	OBI	3
2.1	OBI	3
2.1.1	Images	3
2.1.2	Bias	3
2.1.3	Parameters	4
2.1.4	Events	4
2.2	Compared Parameters	5
2.3	Aspect	6
2.4	Star Slots	9
2.4.1	Slot 3	9
2.4.2	Slot 4	10
2.4.3	Slot 5	11
2.4.4	Slot 6	12
2.4.5	Slot 7	13
2.5	FID Slots	14
2.5.1	Slot 0	14
2.5.2	Slot 1	15
2.5.3	Slot 2	16
A	Summary	17
A.1	Status	17
A.2	Comments	17

1 Front

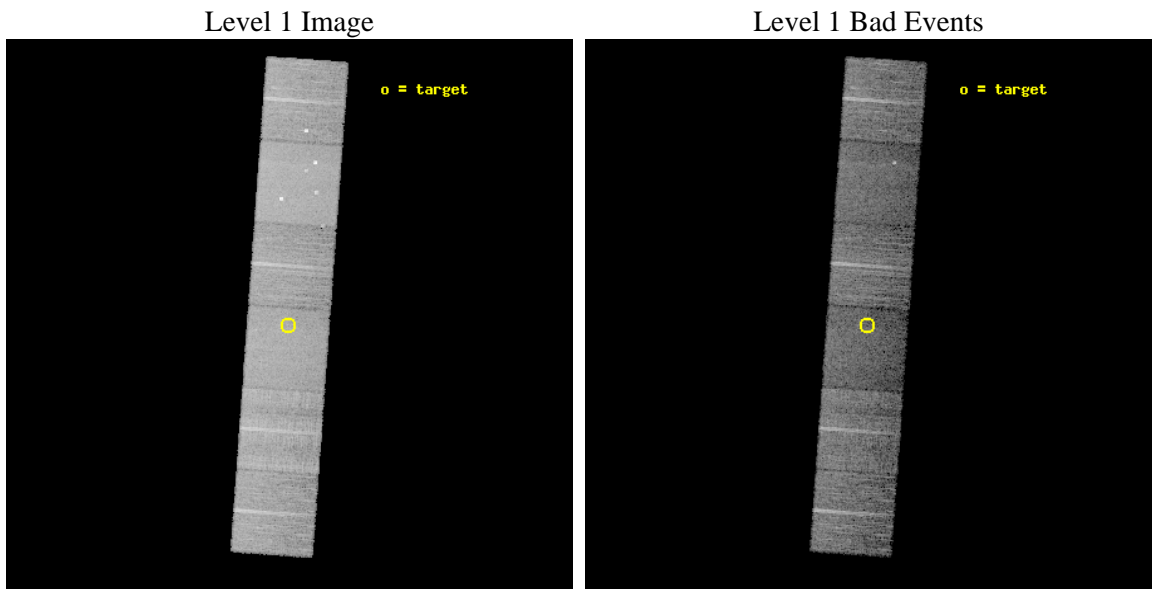
seq_num	600887	Sequence number
obs_id	11368	Observation id
title	Accretion onto nuclear black holes in early type galaxies: comparing field vs. clusters	Proposal title
observer	Elena Gallo	Principal investigator
object	NGC3265	Source name
dtcycle	0	
cycle	P	events from which exps? Prim/Second/Both
ra_targ	157.778	Observer's specified target RA [deg]
dec_targ	28.79657	Observer's specified target Dec [deg]
ra_nom	157.7746978991	Nominal RA [deg]
dec_nom	28.800422295496	Nominal Dec [deg]
roll_nom	94.158182723457	Nominal Roll [deg]
revision	2	Processing version of data
ontime	8335.9819795489	Sum of GTIs [s]
livetime	8230.4267563981	Livetime [s]
ontime4	8329.5179288983	Sum of GTIs [s]
ontime5	8335.9409395456	Sum of GTIs [s]
ontime6	8335.8998995423	Sum of GTIs [s]
ontime7	8335.9819795489	Sum of GTIs [s]
ontime8	8332.6178692579	Sum of GTIs [s]
ontime9	8332.5769088864	Sum of GTIs [s]
l2events	114979	Number of level 2 events



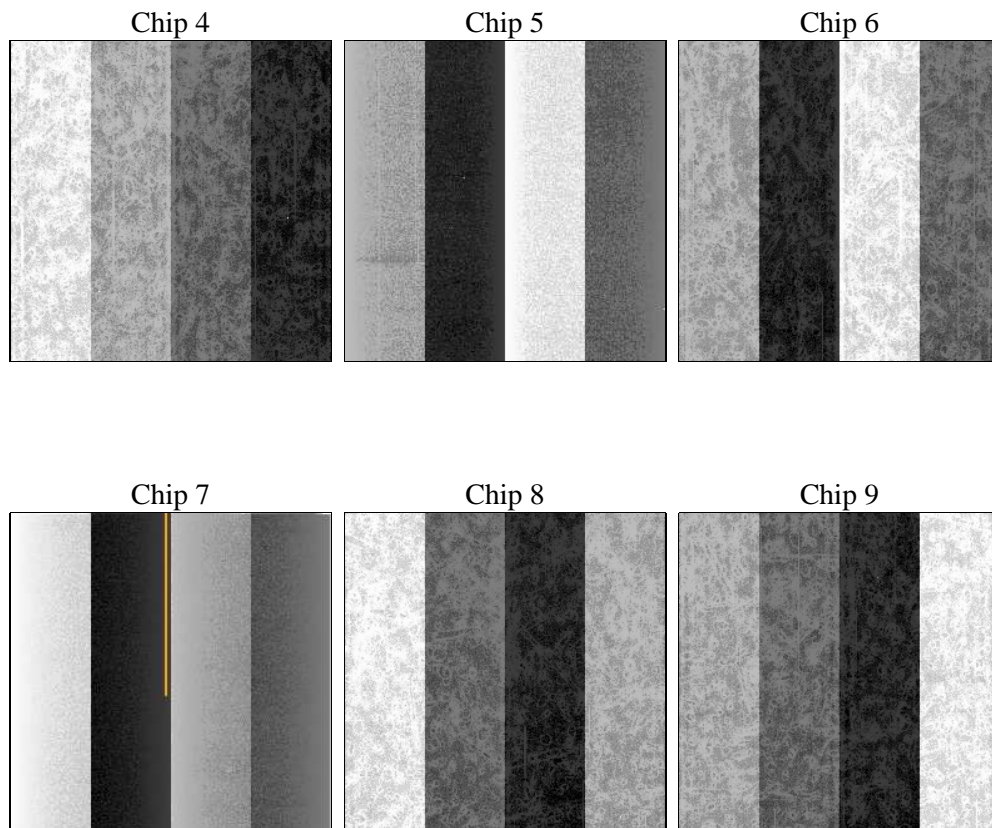
2 OBI

2.1 OBI

2.1.1 Images



2.1.2 Bias



2.1.3 Parameters

obi_num	0	Obi number	sched_exp_time	8300.000000	[s] Scheduled observation exposure time
ascdsver	8.4.5	Processing system revision	ontime	8335.9819795489	Sum of GTIs [s]
caldbver	4.4.10	 	ontime4	8329.5179288983	Sum of GTIs [s]
date	2012-06-19T22:28:17	Date and time of file creation	ontime5	8335.9409395456	Sum of GTIs [s]
revision	2	Processing version of data	ontime6	8335.8998995423	Sum of GTIs [s]
			ontime7	8335.9819795489	Sum of GTIs [s]
			ontime8	8332.6178692579	Sum of GTIs [s]
			ontime9	8332.5769088864	Sum of GTIs [s]
			l1events	520029	Number of level 1 events

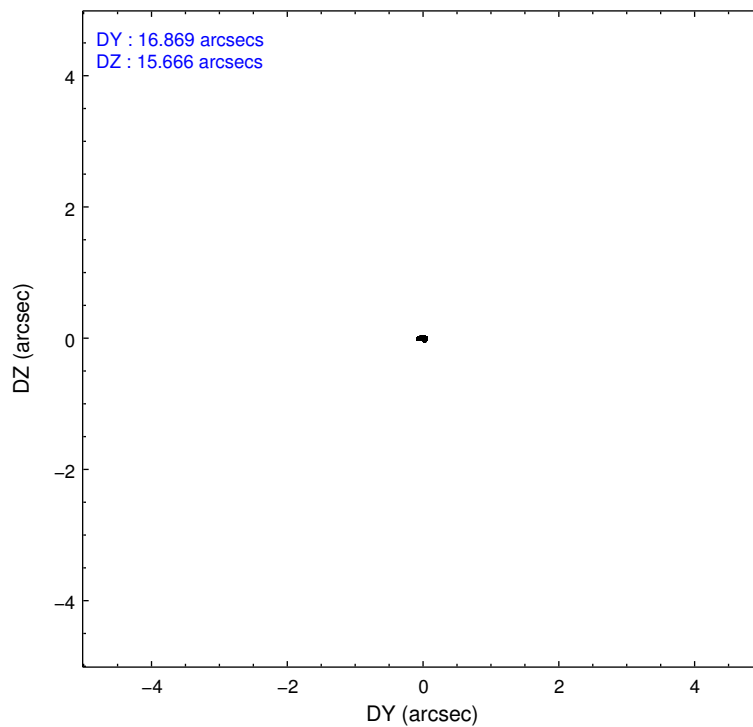
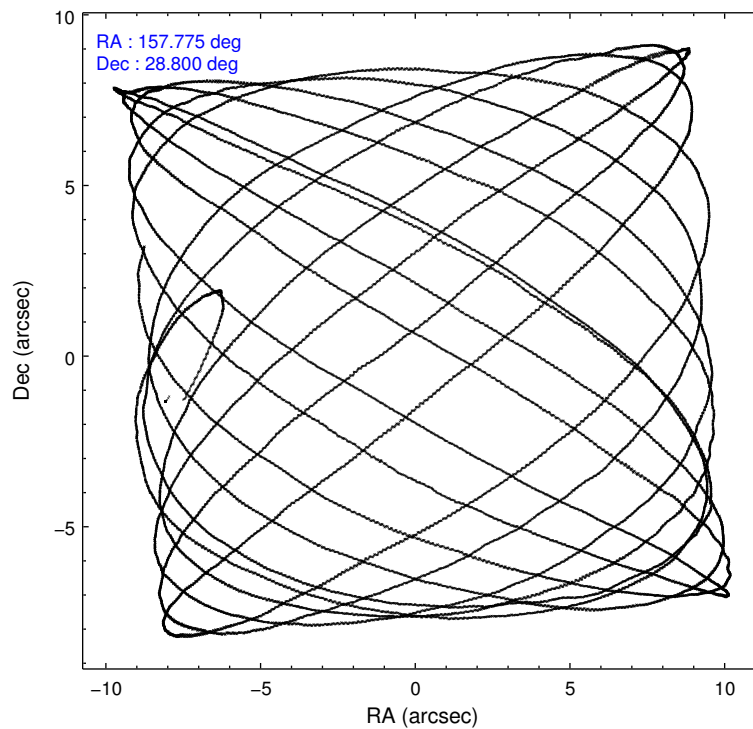
2.1.4 Events

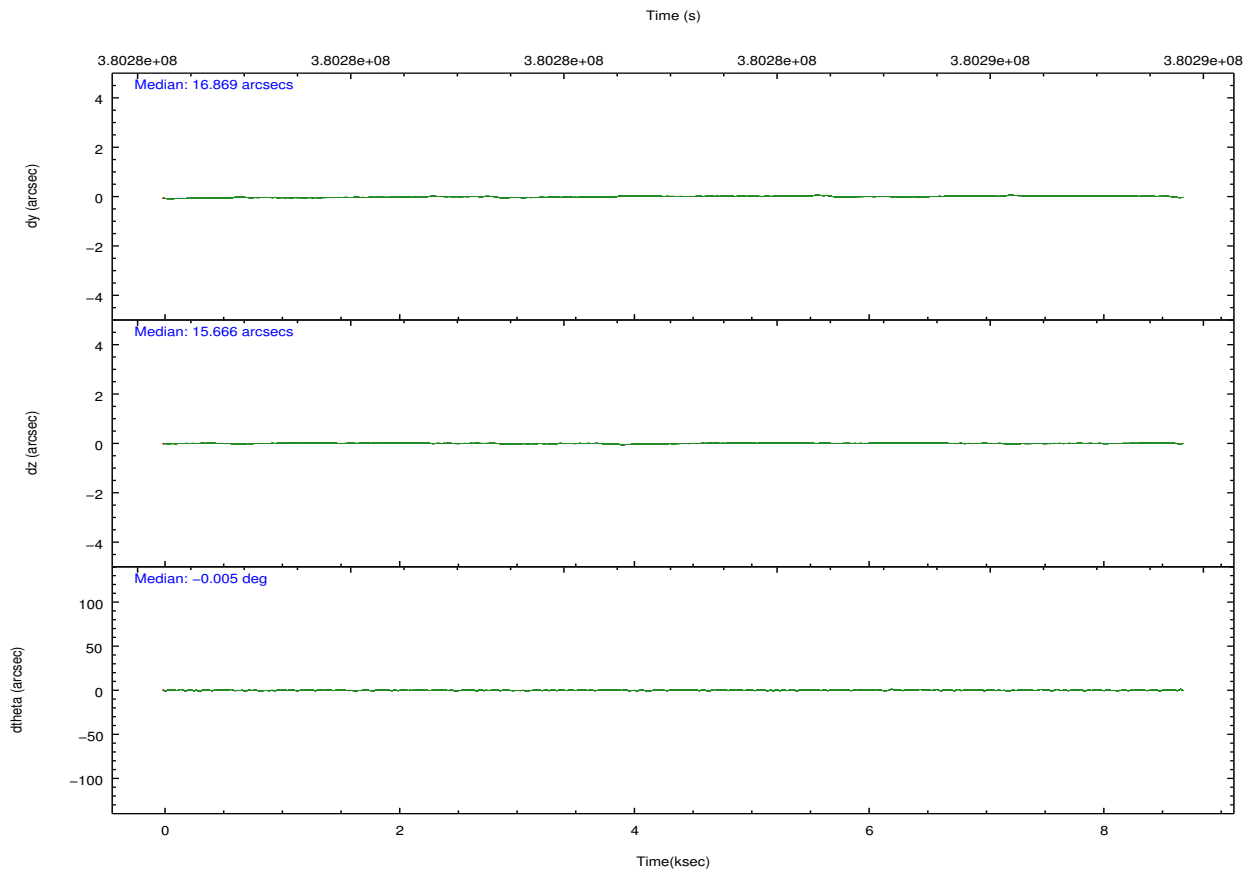
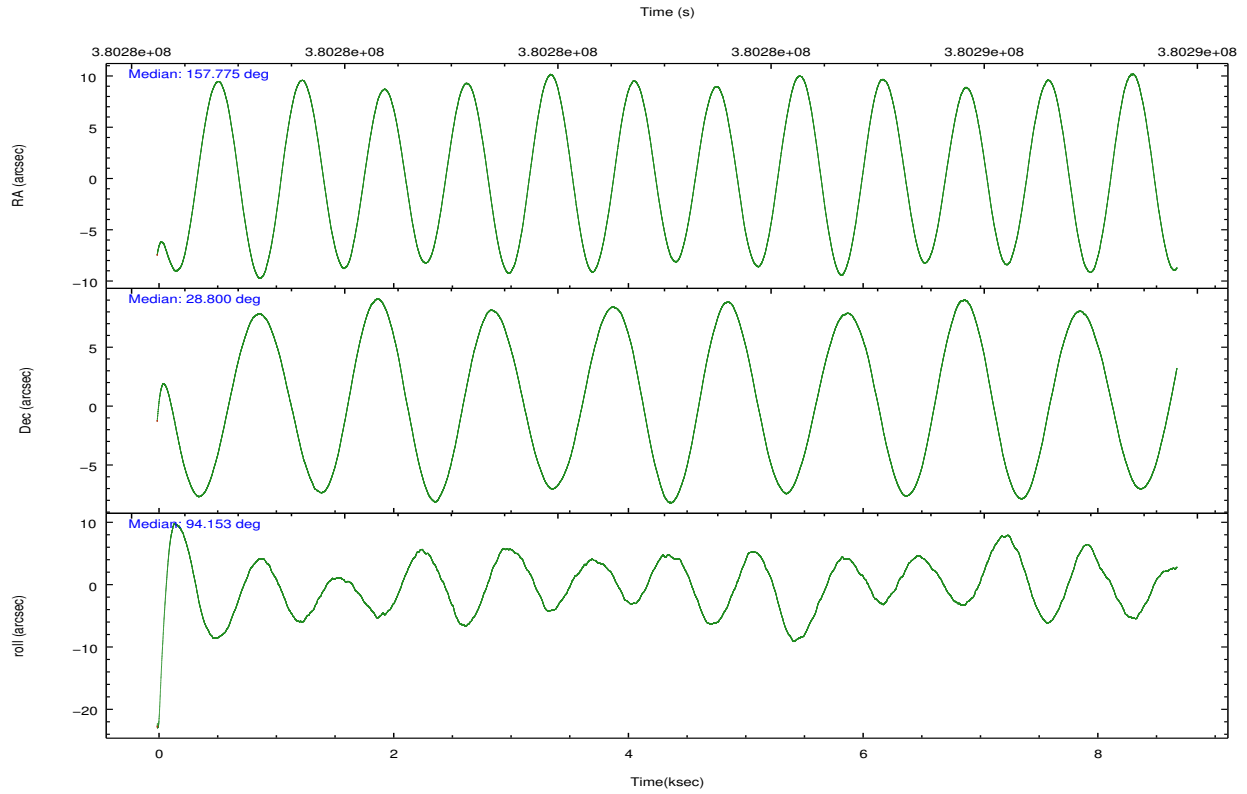
	ccd 4	ccd 5	ccd 6	ccd 7	ccd 8	ccd 9		ccd 4	ccd 5	ccd 6	ccd 7	ccd 8	ccd 9
level 1 events	83401	107563	75849	84752	94212	74252	grade 0 events	4480	6639	2715	3659	7231	3032
rejected events	73824	52972	68128	45941	69932	66063		5%	6%	3%	4%	7%	4%
rejected %	88%	49%	89%	54%	74%	88%	grade 1 events	86	226	38	114	68	52
								0%	0%	0%	0%	0%	0%
							grade 2 events	1975	16504	1681	7934	5717	1778
								2%	15%	2%	9%	6%	2%
							grade 3 events	916	2080	852	3545	2513	848
								1%	1%	1%	4%	2%	1%
							grade 4 events	822	1901	793	3472	2313	830
								0%	1%	1%	4%	2%	1%
							grade 5 events	3029	8127	3106	8662	4387	3303
								3%	7%	4%	10%	4%	4%
							grade 6 events	1394	27511	1686	20227	6526	1708
								1%	25%	2%	23%	6%	2%
							grade 7 events	70699	44575	64978	37139	65457	62701
								84%	41%	85%	43%	69%	84%

2.2 Compared Parameters

Parameter	Planned	Actual	Parameter	Planned	Actual
Instrument	ACIS	ACIS	Obspar format version number	7	7
Detector	ACIS-456789	ACIS-456789	Obspar file type	PREDICTED	ACTUAL
Grating	NONE	NONE	Obspar update status	NONE	UPDATED
Data mode	VFAINT	VFAINT	CCD I0 on	N	N
Observation mode	POINTING	POINTING	CCD I1 on	N	N
[deg] Pointing RA	157.792632	157.7746978991001	CCD I2 on	N	N
[deg] Pointing Dec	28.778086	28.8004222954958	CCD I3 on	N	N
[deg] Pointing Roll	93.992953	94.15818272345717	CCD S0 on	O1	Y
[mm] SIM focus pos	-0.684267	-0.6828225247311905	CCD S1 on	Y	Y
[mm] SIM defocus	0	0.001444936568705701	CCD S2 on	Y	Y
[mm] SIM translation stage pos	-190.132523	-190.1400660498719	CCD S3 on	Y	Y
[mm] SIM translation stage offset	0	0.00754346686406393	CCD S4 on	Y	Y
[s] Observation start time (MET)	380279062.184000	380277949.50445	CCD S5 on	O2	Y
Observation start date	2010-01-19T09:03:16	2010-01-19T08:45:49	Number of optional ACIS chips dropped	0	0
[s] Observation end time (MET)	380287362.184000	380287858.69245	On-chip summing requested	N	N
Observation end date	2010-01-19T11:21:36	2010-01-19T11:30:58	Subarray requested	NONE	NONE
Read mode	TIMED	TIMED	Alternating exposures requested	N	N
			[s] Primary exposure time	0.000000	3.2

2.3 Aspect



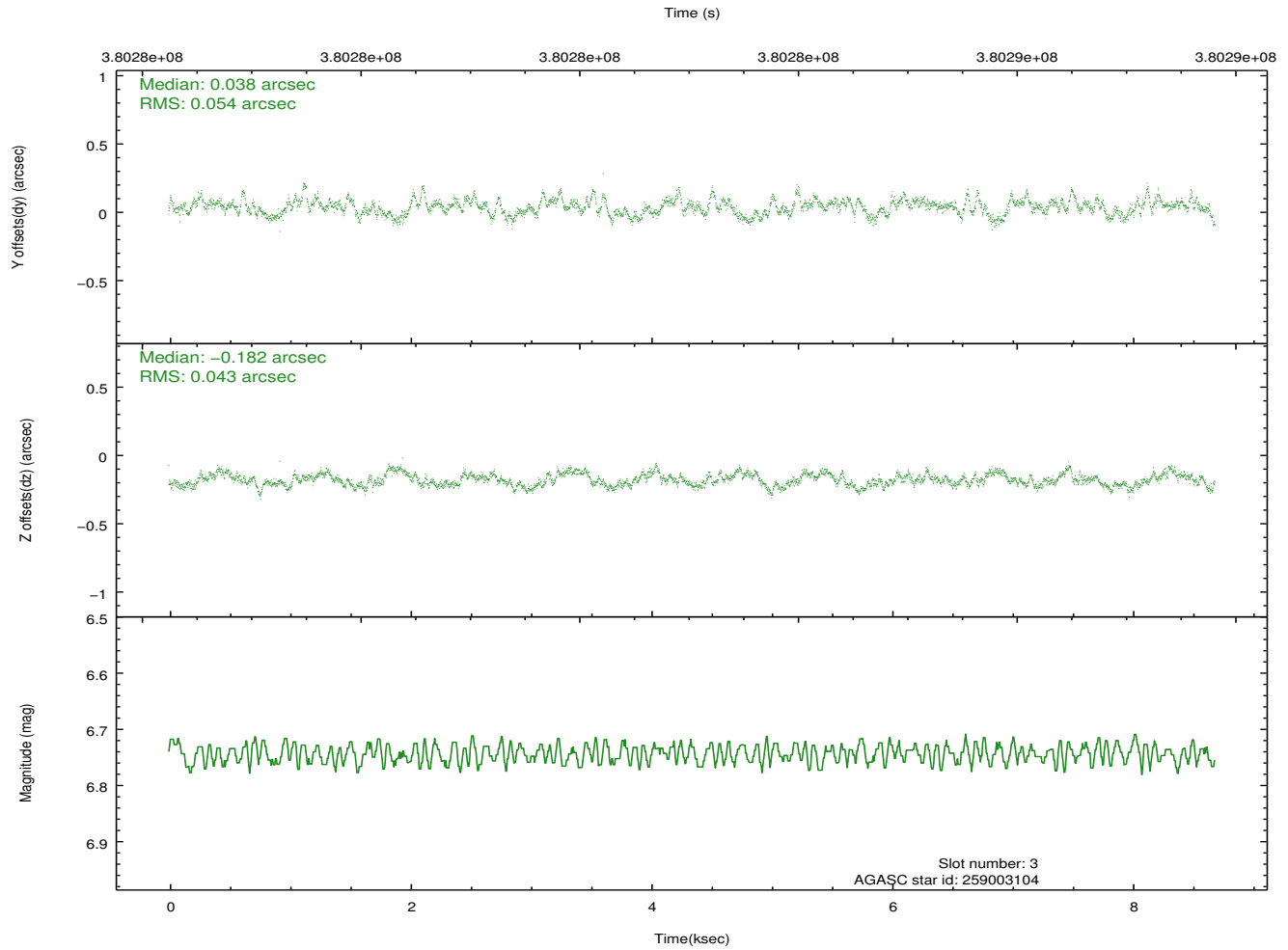
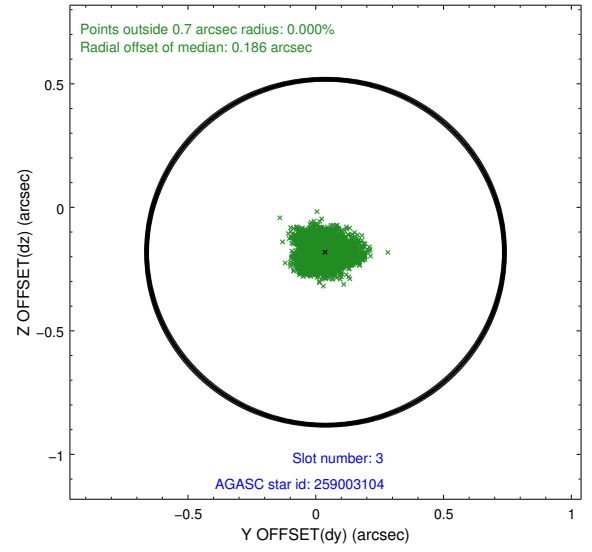
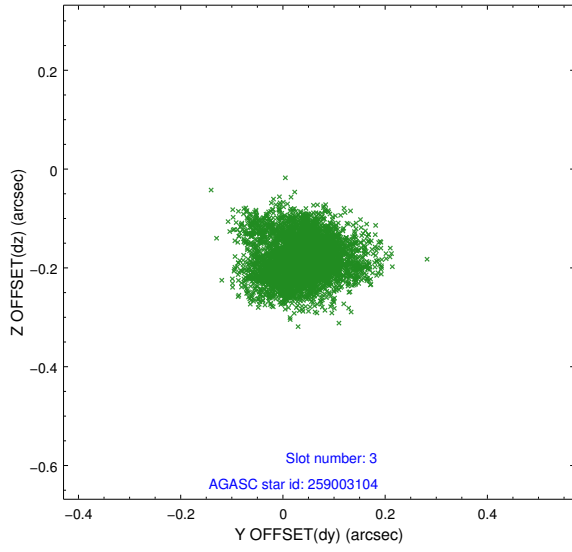


Slot Statistics

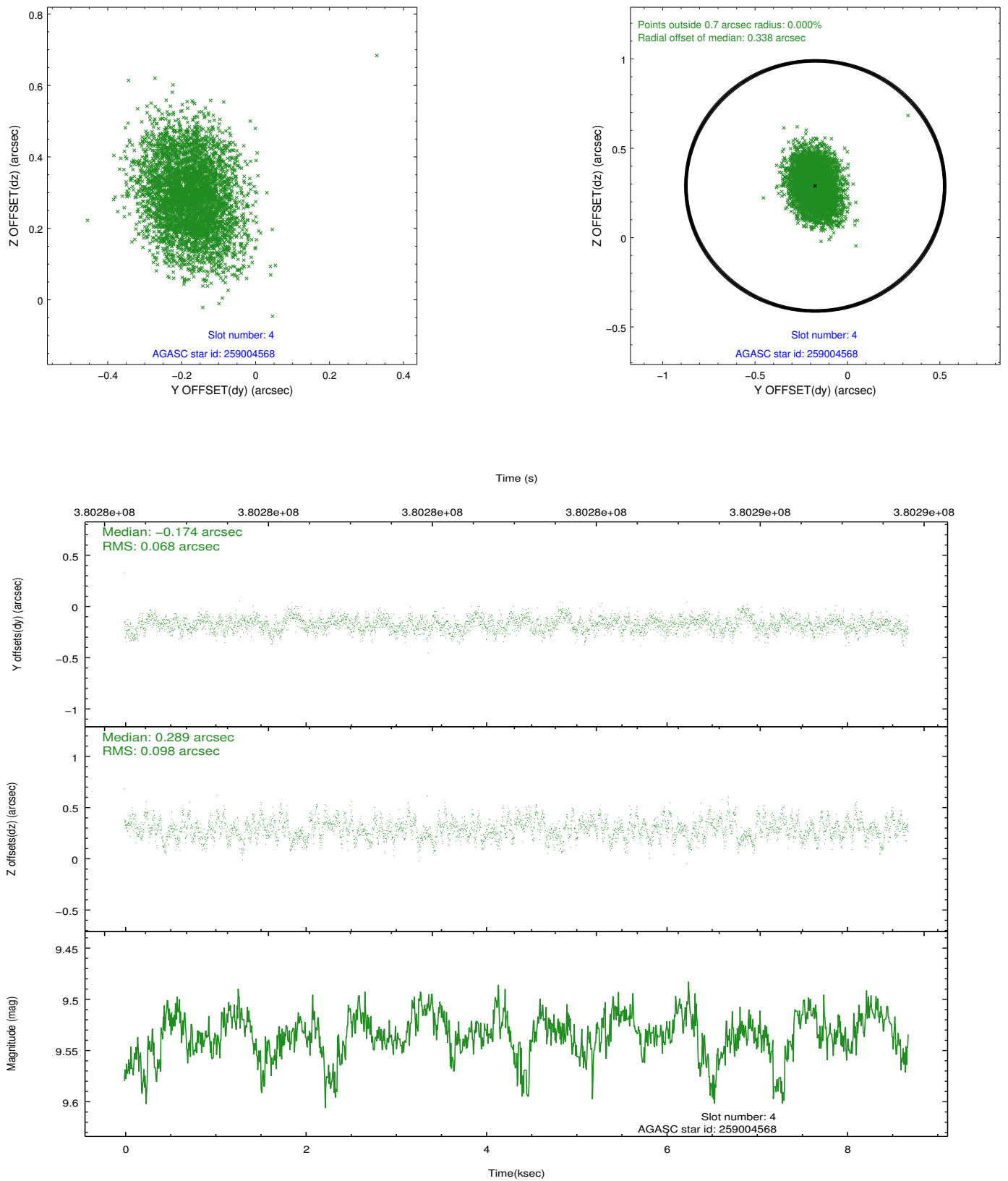
slot	status	id	mag	n_pts	med_dy	med_dz	dr1	dr2	ra	dec	mean_y	mean_z
0	FID	ACIS-S-2	6.91	2120	-0.099	-0.024	0.006	0.011	0.000000	0.000000	-769.96	-1737.09
1	FID	ACIS-S-4	6.99	2119	0.210	0.054	0.005	0.010	0.000000	0.000000	2143.31	170.84
2	FID	ACIS-S-5	7.02	2120	-0.141	-0.022	0.006	0.010	0.000000	0.000000	-1822.05	165.11
3	GUIDE	259003104	6.74	4240	0.038	-0.182	0.073	0.120	157.473711	28.581224	-635.09	1054.58
4	GUIDE	259004568	9.53	4233	-0.174	0.289	0.127	0.204	158.378575	28.874154	221.17	-1866.71
5	GUIDE	259007640	9.74	4224	-0.101	-0.275	0.130	0.204	157.043428	29.237332	1820.82	2231.49
6	GUIDE	259003456	7.85	4240	0.149	-0.075	0.068	0.112	157.443141	28.555534	-719.91	1158.56
7	GUIDE	259000616	9.92	4209	0.087	0.243	0.142	0.233	157.768550	29.443833	2395.77	-89.98

2.4 Star Slots

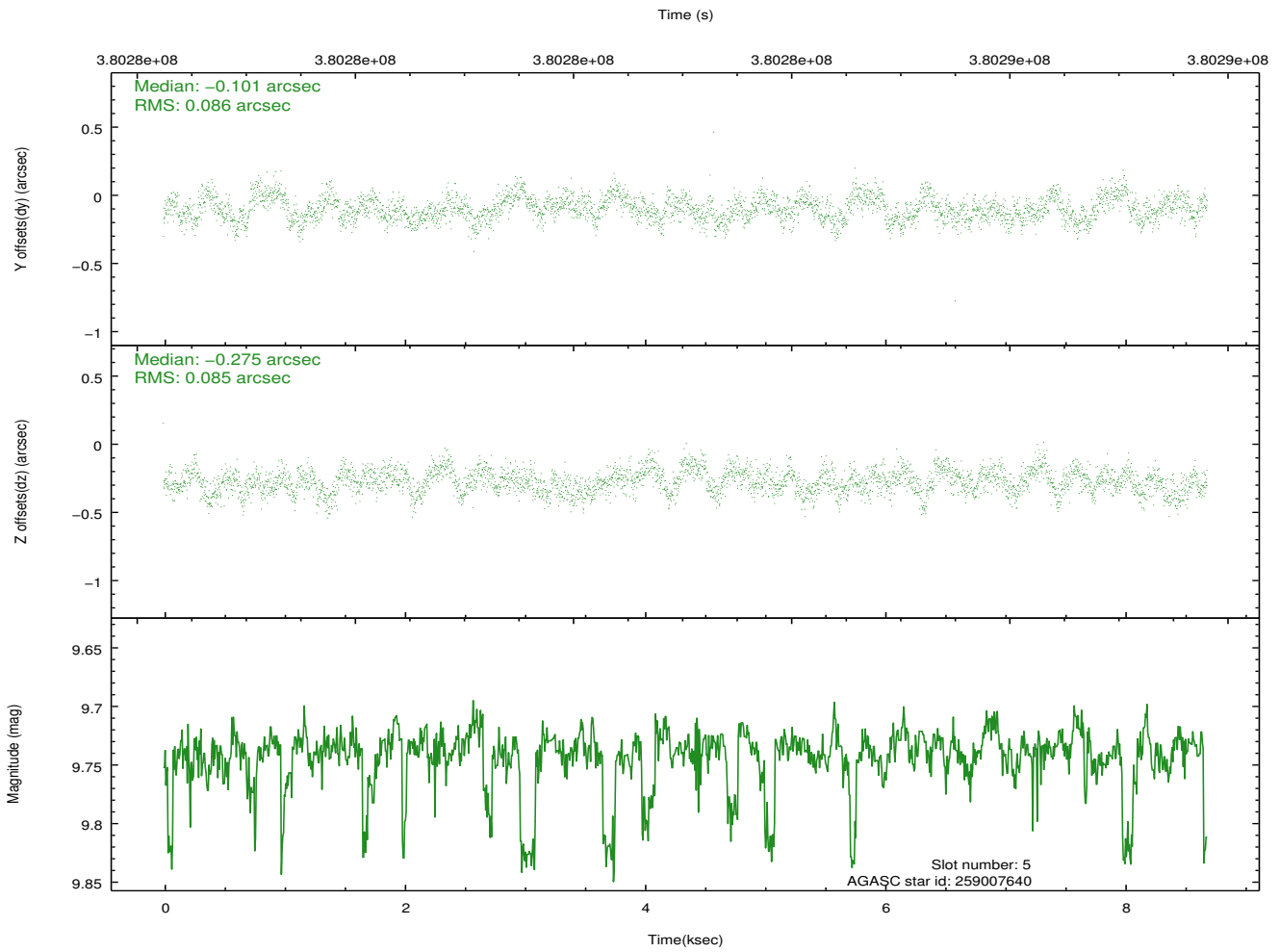
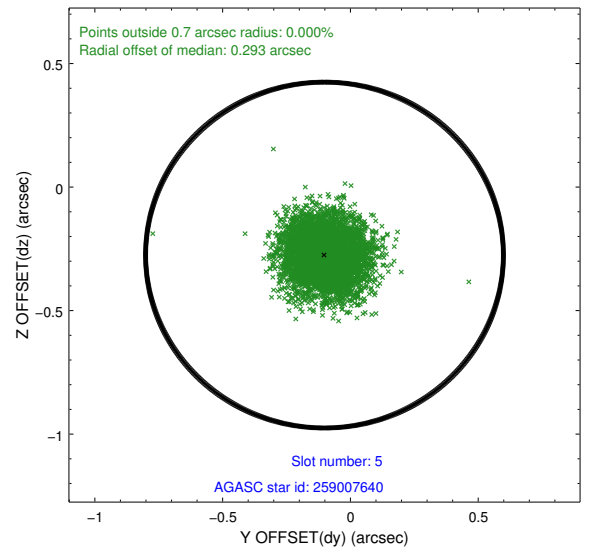
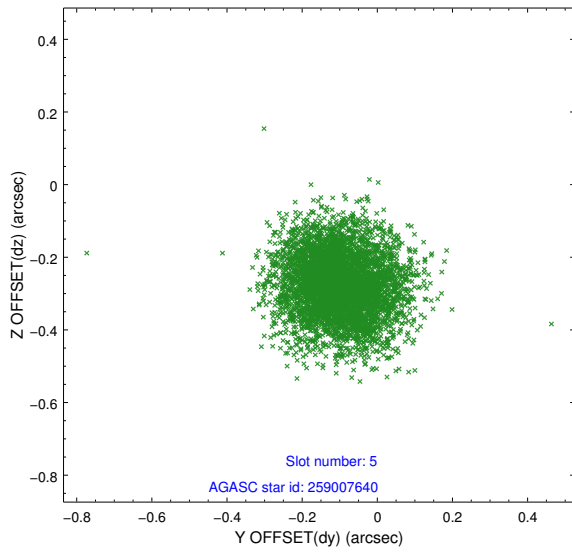
2.4.1 Slot 3



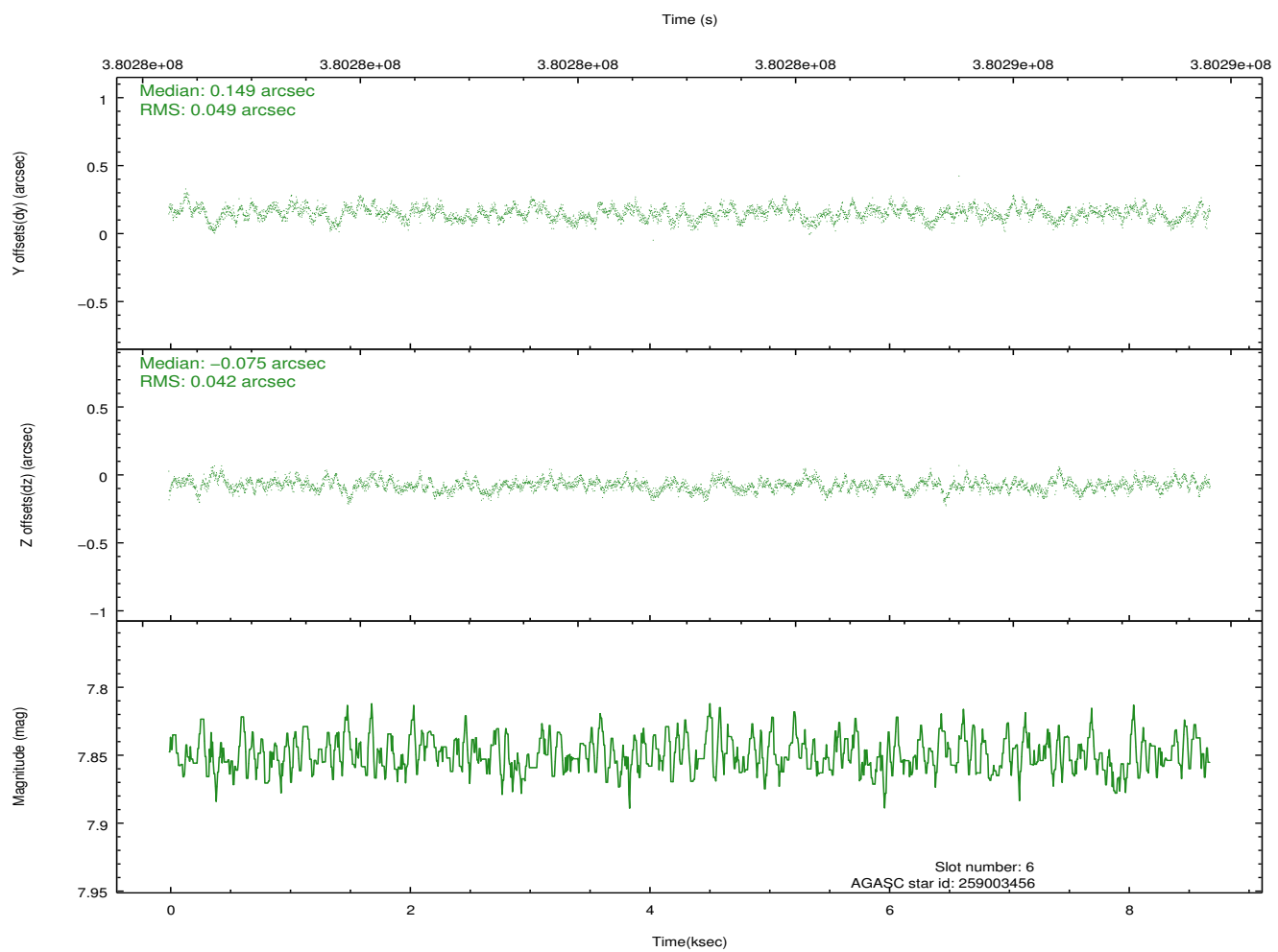
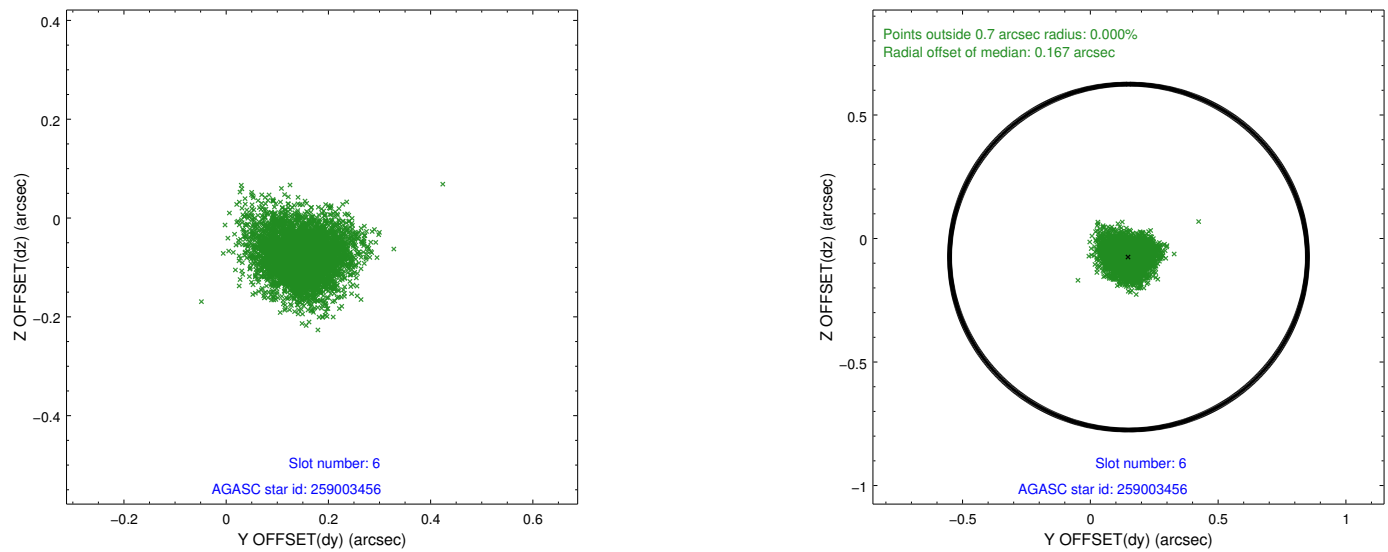
2.4.2 Slot 4



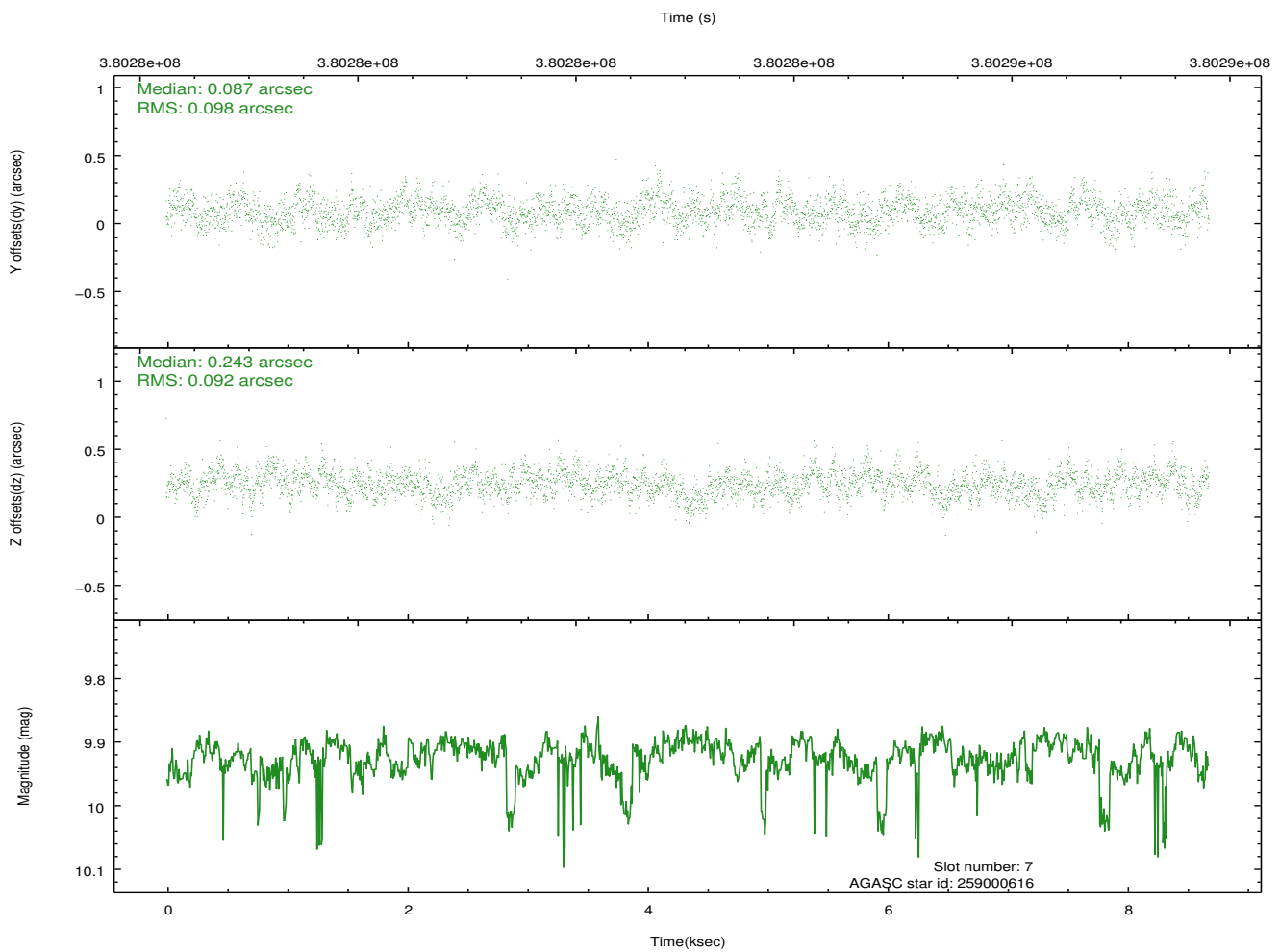
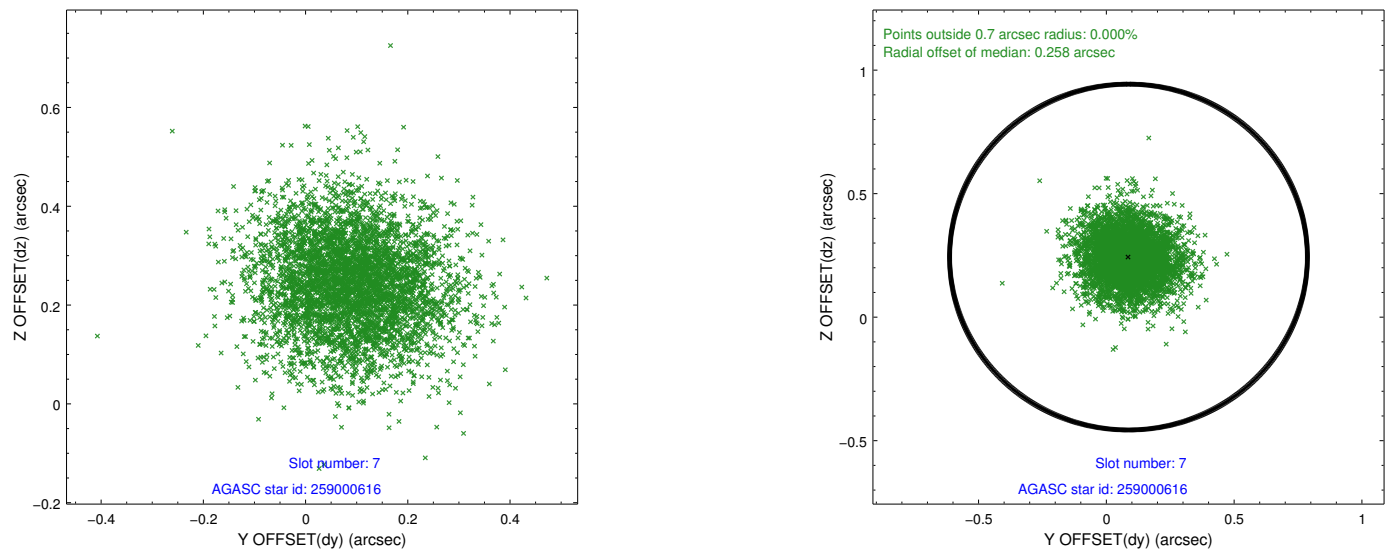
2.4.3 Slot 5



2.4.4 Slot 6

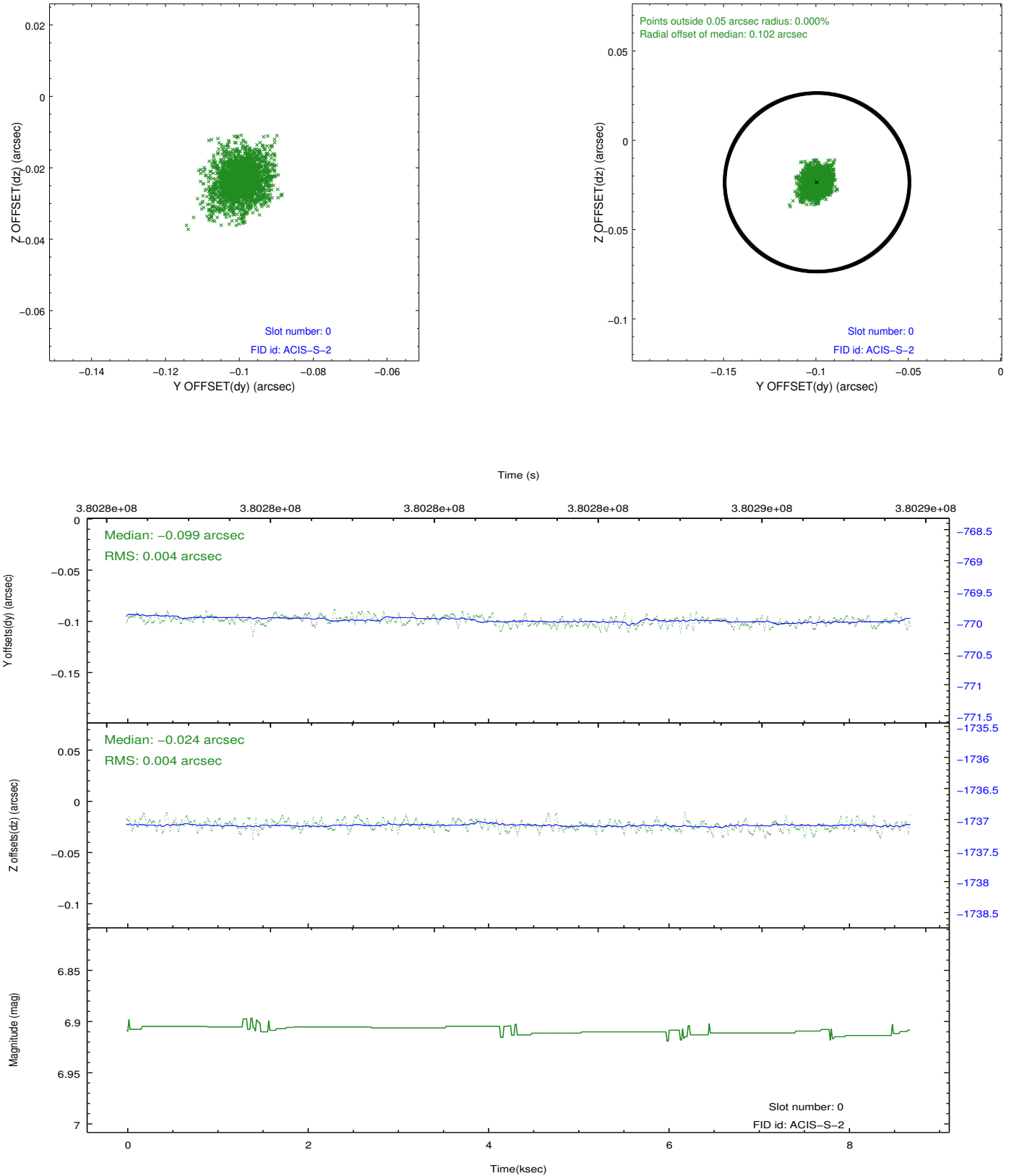


2.4.5 Slot 7

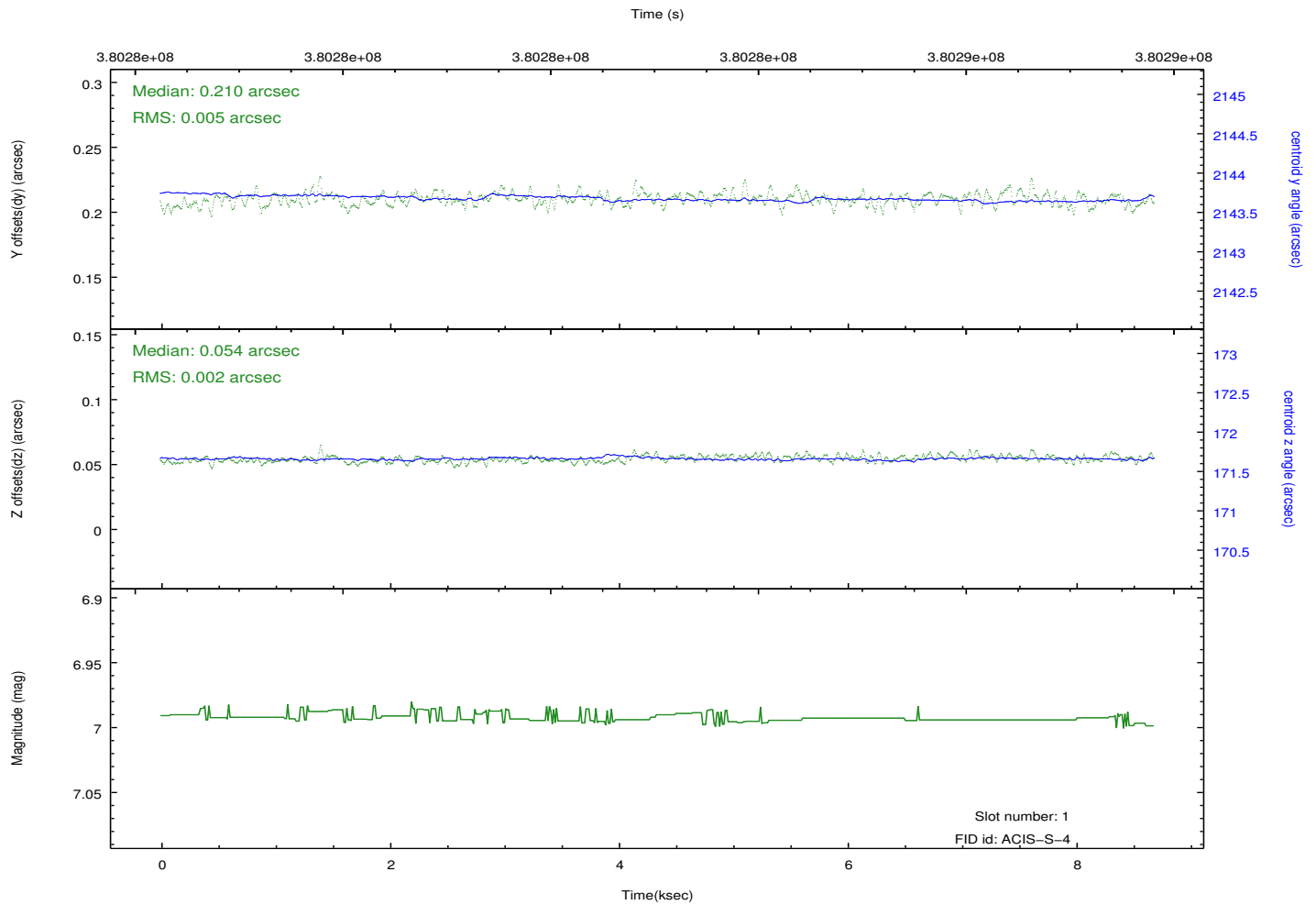
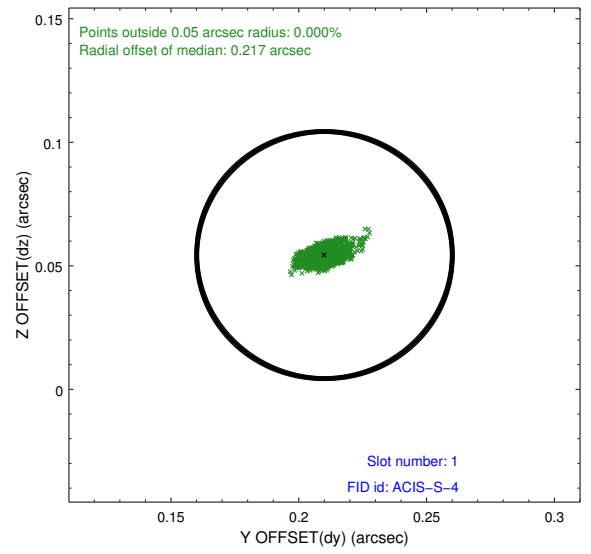
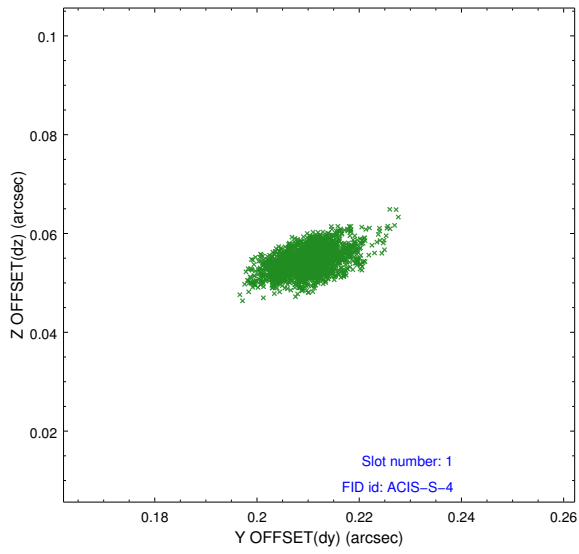


2.5 FID Slots

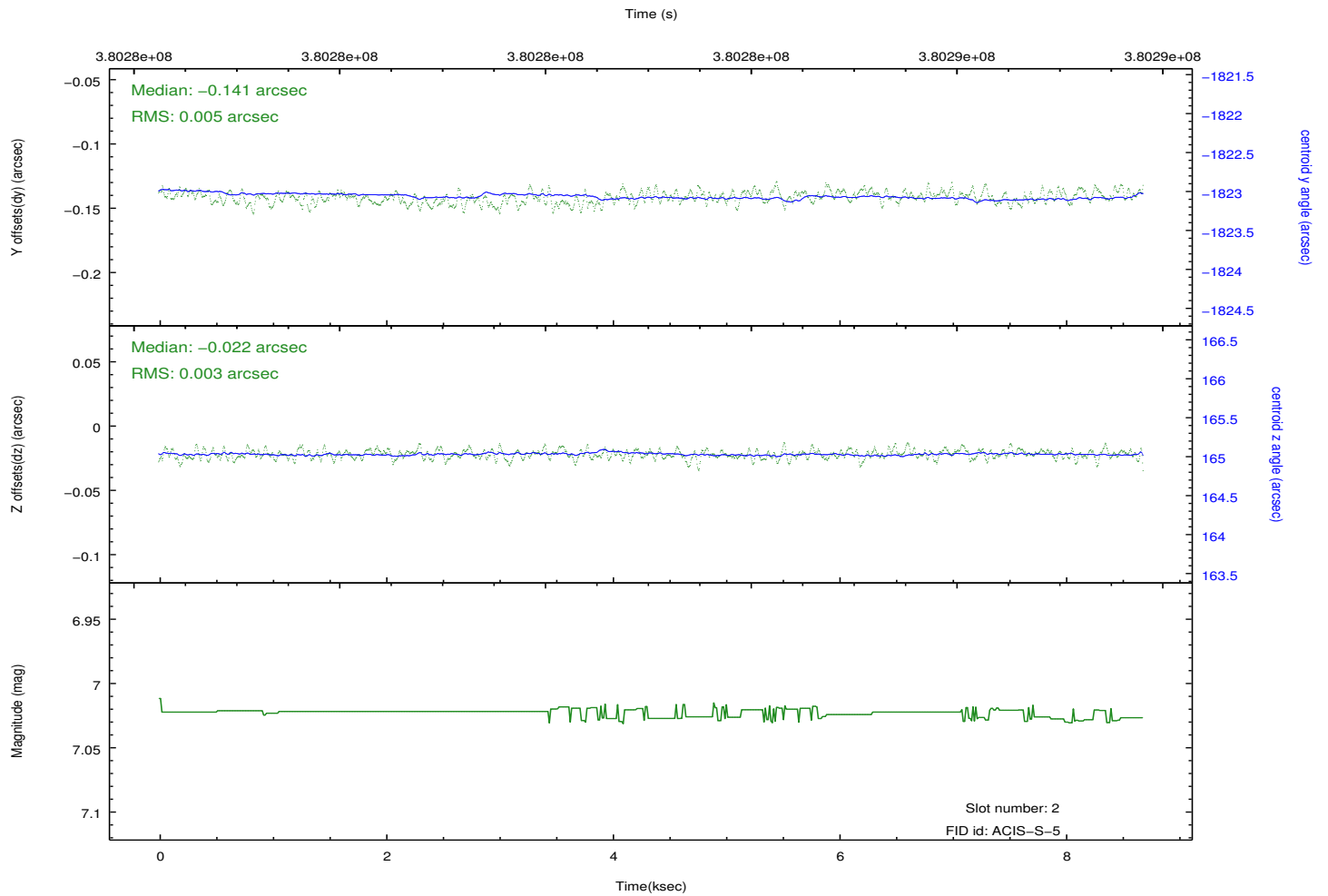
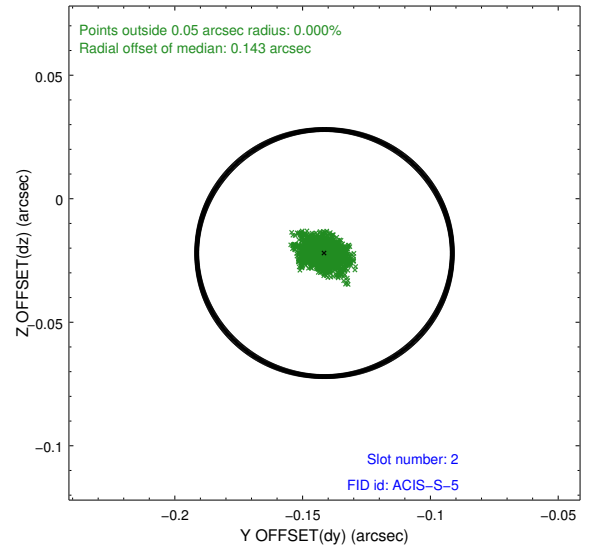
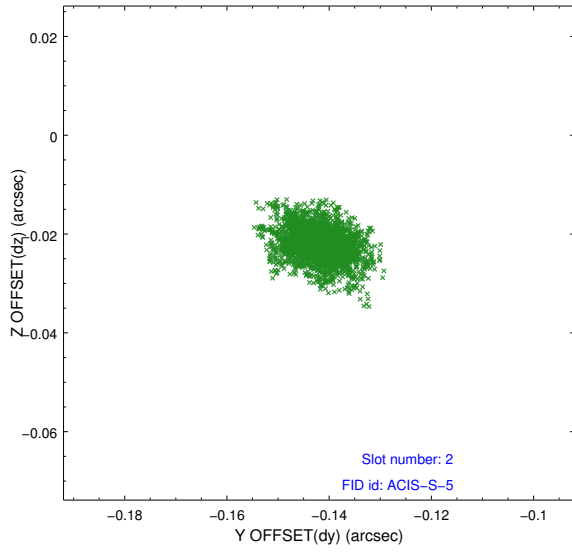
2.5.1 Slot 0



2.5.2 Slot 1



2.5.3 Slot 2



A Summary

A.1 Status

V&V Scientist	Jen Lauer
V&V Date (YYYY-MM-DD)	2012.06.25
V&V Edition	1
V&V Disposition and Status	OK
V&V Charge Time	8.3359819793701

A.2 Comments