

V&V Reference Report

L2 ASCDS Version : 8.4.5

Observation 11538 - L2 Version 2
Chandra X-Ray Center

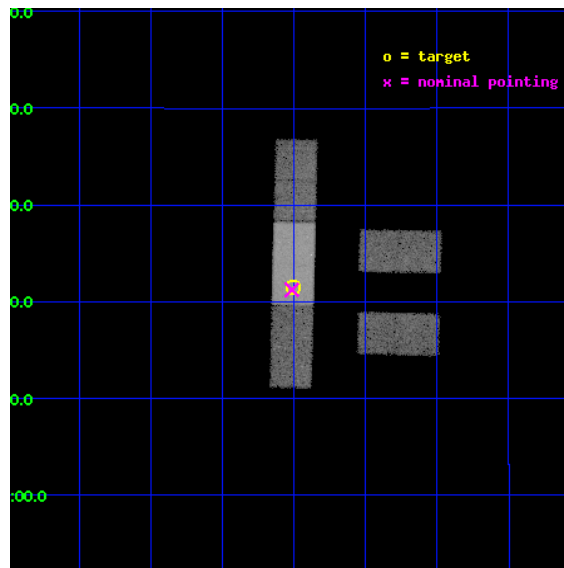
L2 Processing Date : Jul 4 2012

Contents

1	Front	2
2	OBI	3
2.1	OBI	3
2.1.1	Images	3
2.1.2	Bias	3
2.1.3	Parameters	4
2.1.4	Events	4
2.2	Compared Parameters	5
2.3	Aspect	6
2.4	Star Slots	9
2.4.1	Slot 3	9
2.4.2	Slot 4	10
2.4.3	Slot 5	11
2.4.4	Slot 6	12
2.4.5	Slot 7	13
2.5	FID Slots	14
2.5.1	Slot 0	14
2.5.2	Slot 1	15
2.5.3	Slot 2	16
A	Summary	17
A.1	Status	17
A.2	Comments	17

1 Front

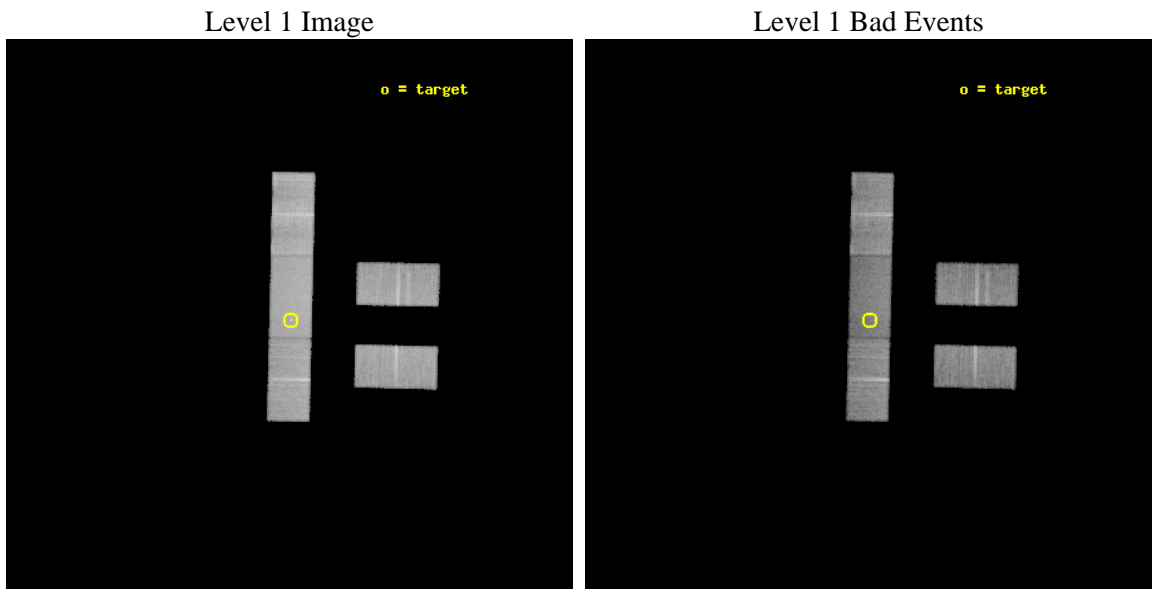
seq_num	702124	Sequence number
obs_id	11538	Observation id
title	The Size of Quasar Non-Thermal/X-ray Emission Regions	Proposal tit
observer	Prof. Christopher Kochanek	Principal investigator
object	Q2237+0305	Source name
dtcycle	0	
cycle	P	events from which exps? Prim/Second/Both
ra_targ	340.12625	Observer's specified target RA [deg]
dec_targ	3.358	Observer's specified target Dec [deg]
ra_nom	340.12890432725	Nominal RA [deg]
dec_nom	3.3539401675282	Nominal Dec [deg]
roll_nom	271.33785892717	Nominal Roll [deg]
revision	2	Processing version of data
ontime	30062.79978925	Sum of GTIs [s]
livetime	29354.15593078	Livetime [s]
ontime2	30062.79978925	Sum of GTIs [s]
ontime3	30061.058759093	Sum of GTIs [s]
ontime6	30062.79978925	Sum of GTIs [s]
ontime7	30062.79978925	Sum of GTIs [s]
ontime8	30062.79978925	Sum of GTIs [s]
l2events	108791	Number of level 2 events



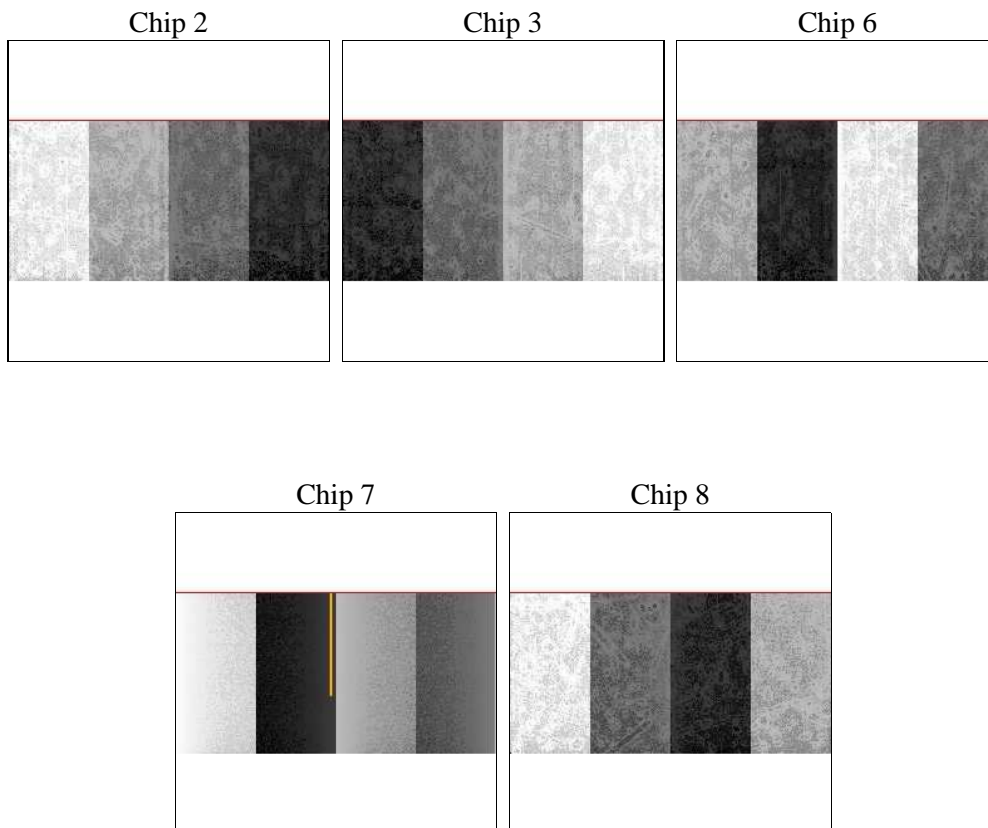
2 OBI

2.1 OBI

2.1.1 Images



2.1.2 Bias



2.1.3 Parameters

obi_num	0	Obi number	sched_exp_time	30000.000000	[s] Scheduled observation exposure time
ascdsver	8.4.5	Processing system revision	ontime	30062.79978925	Sum of GTIs [s]
caldbver	4.5.0	 	ontime2	30062.79978925	Sum of GTIs [s]
date	2012-07-04T03:55:19	Date and time of file creation	ontime3	30061.058759093	Sum of GTIs [s]
revision	2	Processing version of data	ontime6	30062.79978925	Sum of GTIs [s]
			ontime7	30062.79978925	Sum of GTIs [s]
			ontime8	30062.79978925	Sum of GTIs [s]
			l1events	652282	Number of level 1 events

2.1.4 Events

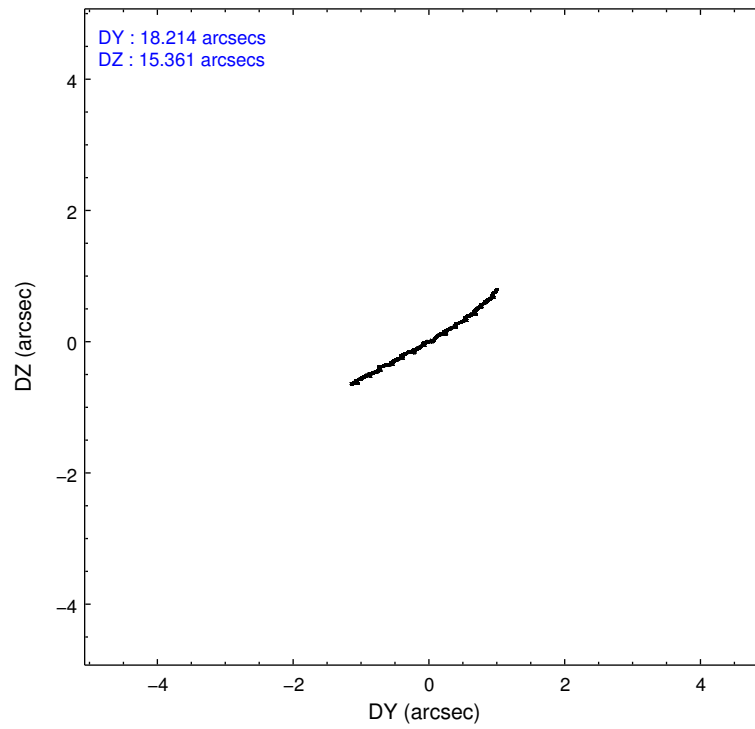
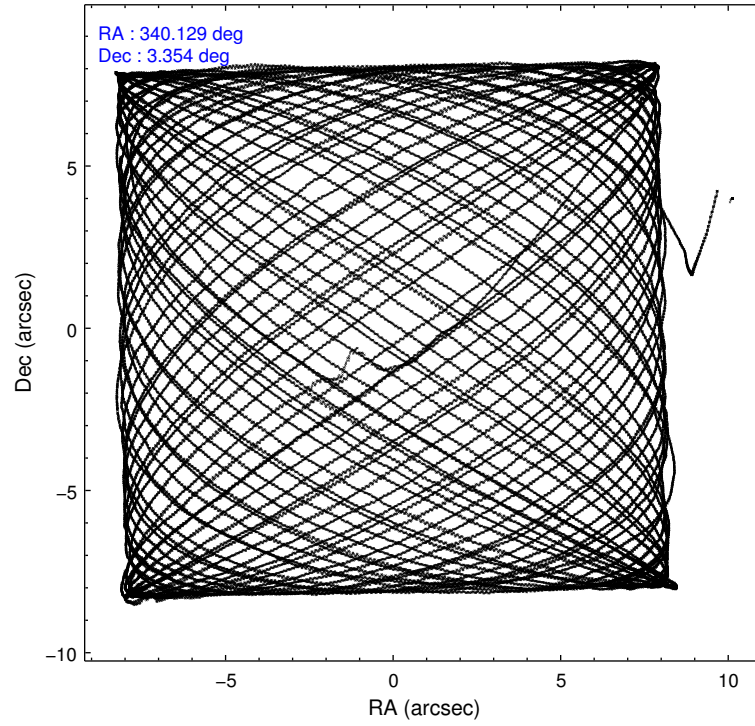
	ccd 2	ccd 3	ccd 6	ccd 7	ccd 8
level 1 events	115146	113481	121153	143693	158809
rejected events	102901	101350	107727	77391	119930
rejected %	89%	89%	88%	53%	75%

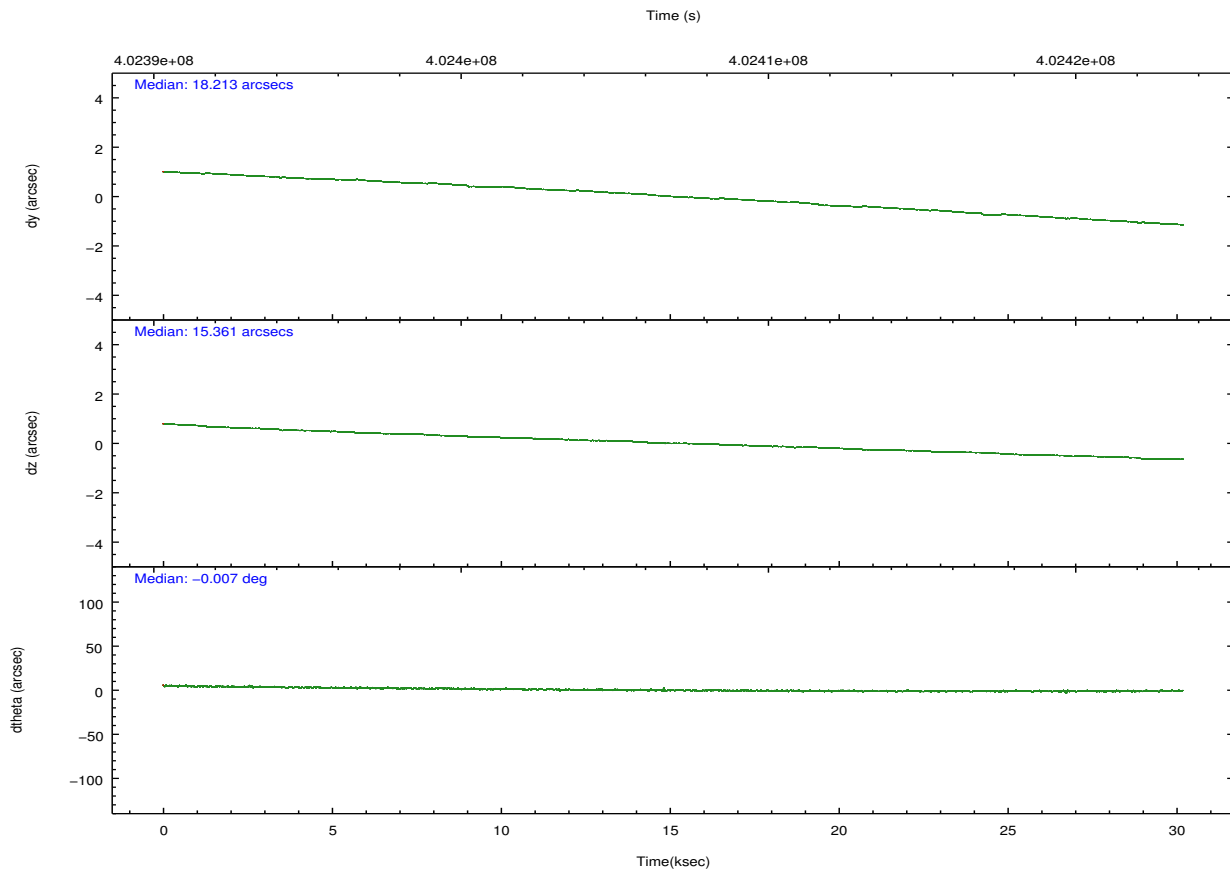
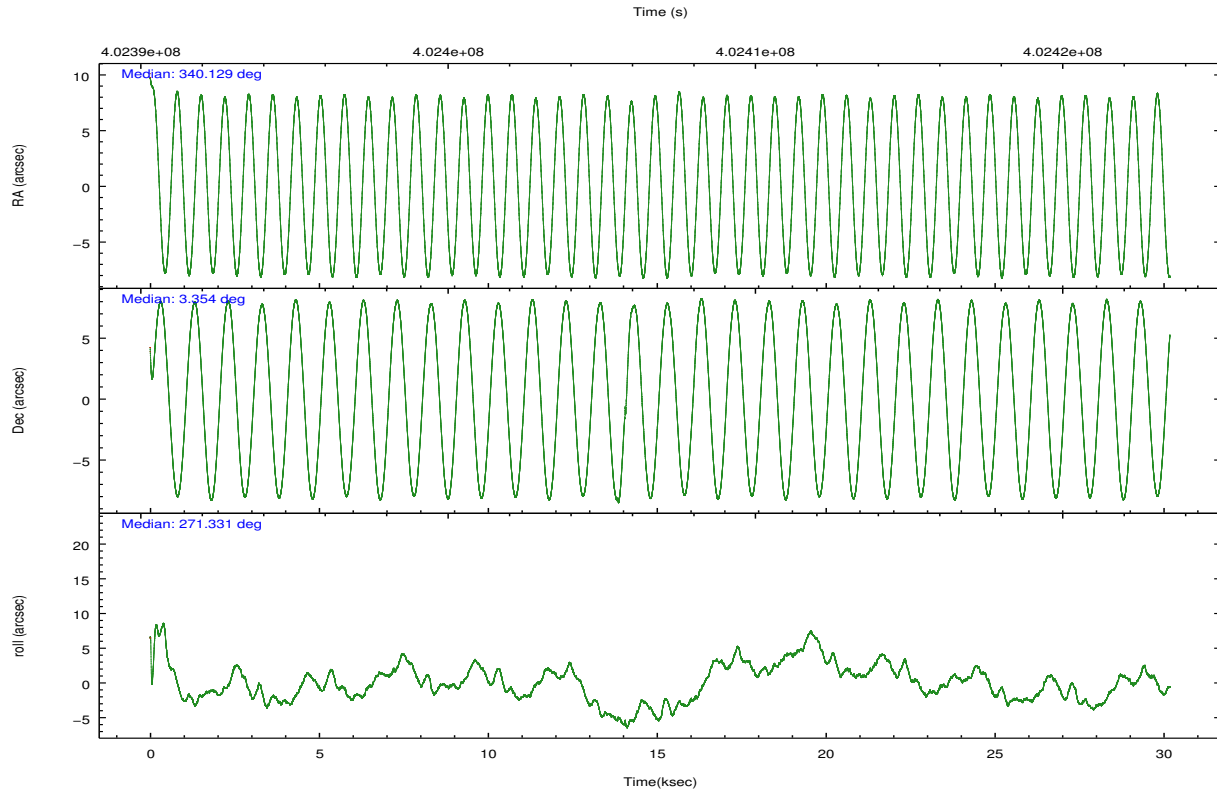
	ccd 2	ccd 3	ccd 6	ccd 7	ccd 8
grade 0 events	3994	3976	4356	6716	10682
	3%	3%	3%	4%	6%
grade 1 events	48	49	64	163	90
	0%	0%	0%	0%	0%
grade 2 events	2865	2482	2934	13953	9399
	2%	2%	2%	9%	5%
grade 3 events	1494	1601	1681	6716	4183
	1%	1%	1%	4%	2%
grade 4 events	1585	1570	1579	6426	3844
	1%	1%	1%	4%	2%
grade 5 events	4139	5162	5259	15003	7614
	3%	4%	4%	10%	4%
grade 6 events	2308	2502	2877	32493	10772
	2%	2%	2%	22%	6%
grade 7 events	98713	96139	102403	62223	112225
	85%	84%	84%	43%	70%

2.2 Compared Parameters

Parameter	Planned	Actual	Parameter	Planned	Actual
Instrument	ACIS	ACIS	Obspar format version number	7	7
Detector	ACIS-23678	ACIS-23678	Obspar file type	PREDICTED	ACTUAL
Grating	NONE	NONE	Obspar update status	NONE	UPDATED
Data mode	VFAINT	VFAINT	CCD I0 on	N	N
Observation mode	POINTING	POINTING	CCD I1 on	N	N
[deg] Pointing RA	340.114330	340.1289043272542	CCD I2 on	O4	Y
[deg] Pointing Dec	3.377089	3.353940167528207	CCD I3 on	O3	Y
[deg] Pointing Roll	271.182084	271.3378589271699	CCD S0 on	N	N
[mm] SIM focus pos	-0.684267	-0.6828225247311905	CCD S1 on	N	N
[mm] SIM defocus	0	0.001444936568705701	CCD S2 on	O1	Y
[mm] SIM translation stage pos	-190.132523	-190.1425803651734	CCD S3 on	Y	Y
[mm] SIM translation stage offset	0	0.01005778216563158	CCD S4 on	O2	Y
[s] Observation start time (MET)	402391982.184000	402390986.46889	CCD S5 on	N	N
Observation start date	2010-10-02T07:31:56	2010-10-02T07:16:26	Number of optional ACIS chips dropped	0	0
[s] Observation end time (MET)	402421982.184000	402423491.27056	On-chip summing requested	N	N
Observation end date	2010-10-02T15:51:56	2010-10-02T16:18:11	Subarray requested	CUSTOM	1/2
Read mode	TIMED	TIMED	Subarray start row	257	257
			Subarray row count	512	512
			Alternating exposures requested	N	N
			[s] Primary exposure time	0.000000	1.7

2.3 Aspect



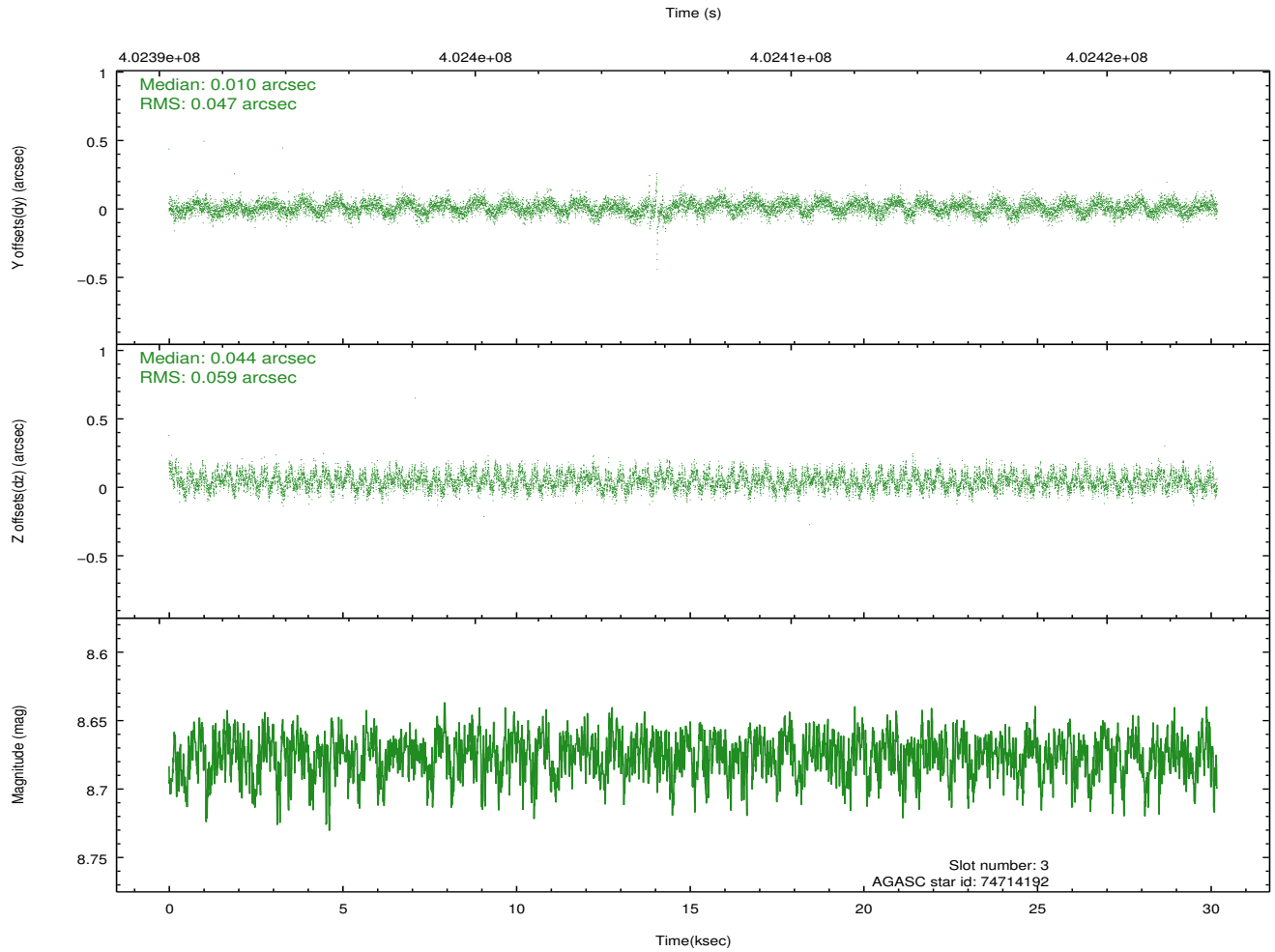
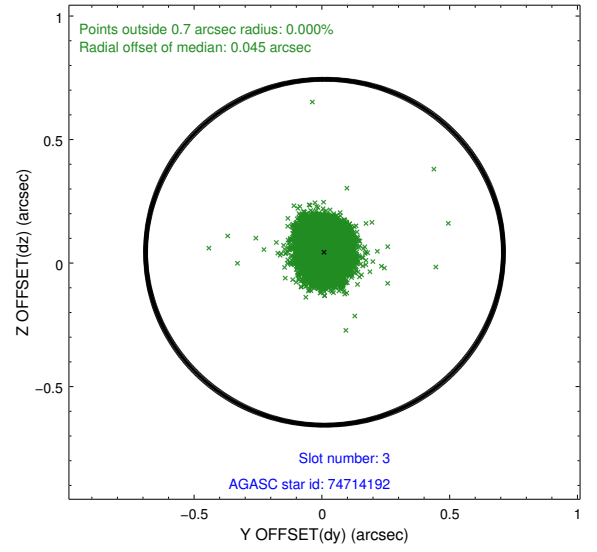
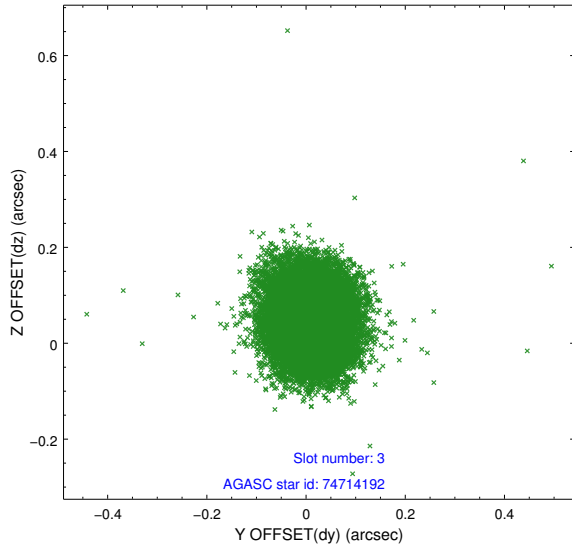


Slot Statistics

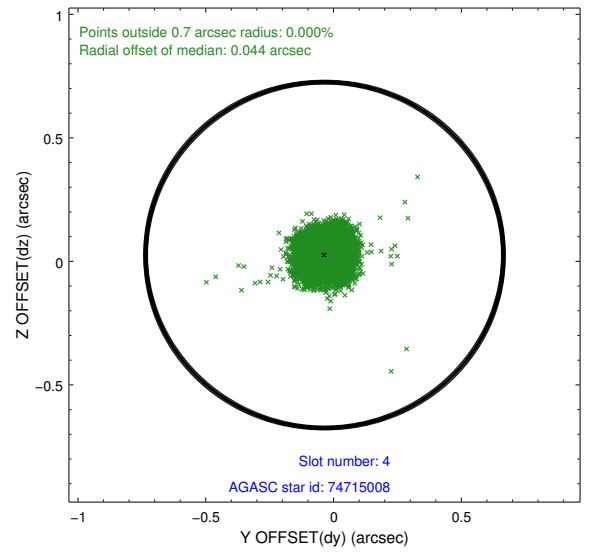
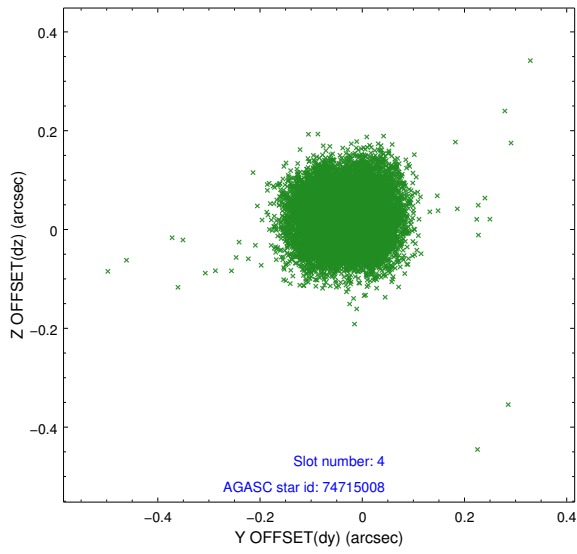
slot	status	id	mag	n_pts	med_dy	med_dz	dr1	dr2	ra	dec	mean_y	mean_z
0	FID	ACIS-S-1	6.99	7362	0.085	-0.086	0.019	0.040	0.000000	0.000000	924.92	-1732.41
1	FID	ACIS-S-5	7.04	7363	-0.161	0.044	0.024	0.054	0.000000	0.000000	-1824.33	165.12
2	FID	ACIS-S-6	7.14	7363	0.053	0.054	0.031	0.053	0.000000	0.000000	390.28	809.23
3	GUIDE	74714192	8.68	14715	0.010	0.044	0.080	0.126	339.623837	3.342441	88.51	-1764.49
4	GUIDE	74715008	7.98	14723	-0.035	0.026	0.074	0.117	339.956848	3.242441	473.34	-575.54
5	GUIDE	74727584	6.97	14724	0.047	-0.140	0.082	0.123	339.633744	3.463732	-347.24	-1719.95
6	GUIDE	74854992	8.27	14716	-0.027	-0.171	0.066	0.109	340.342808	3.603730	-798.41	837.36
7	GUIDE	74855640	8.85	14707	-0.001	0.239	0.071	0.114	340.341123	3.746937	-1314.22	842.58

2.4 Star Slots

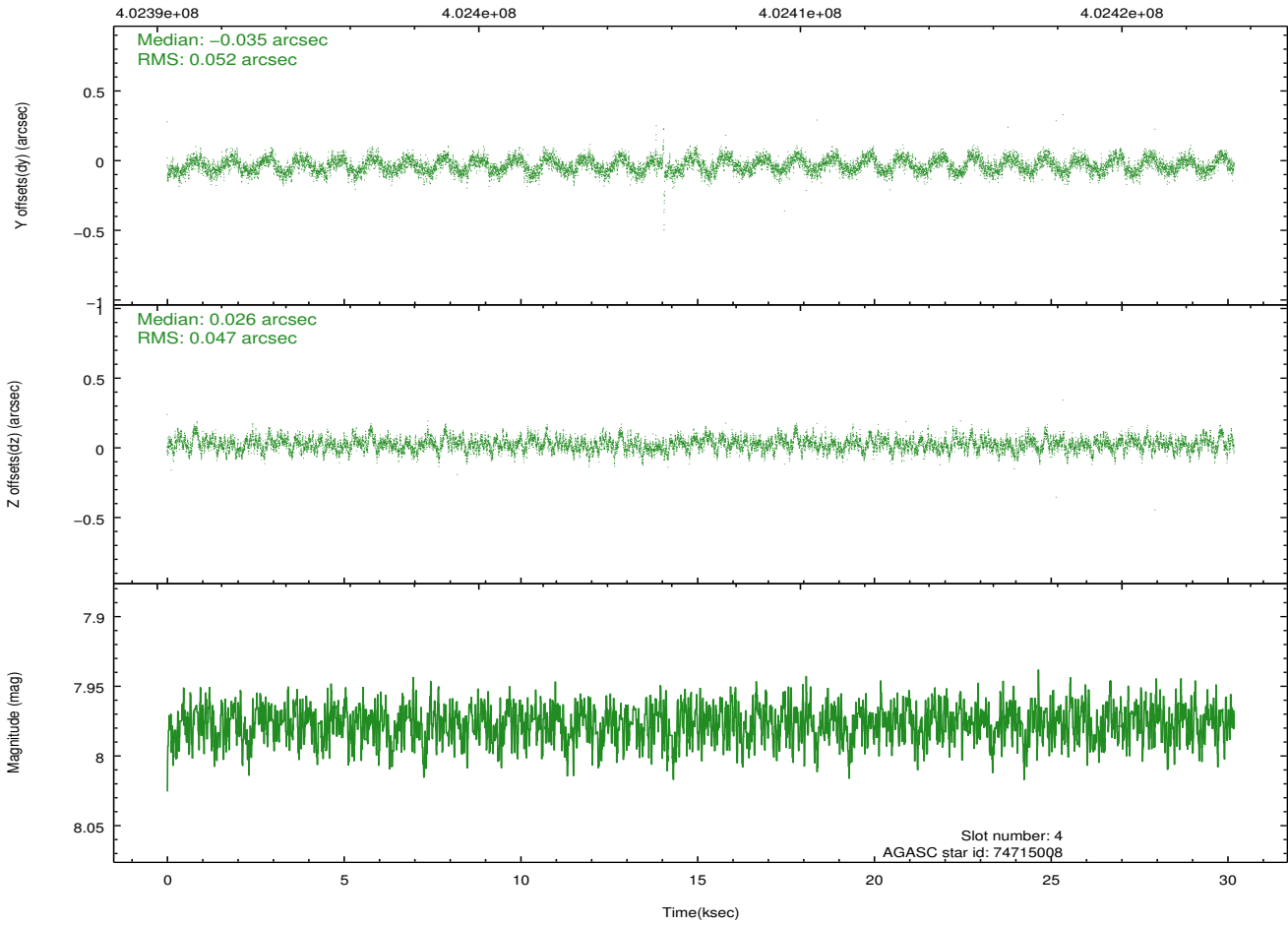
2.4.1 Slot 3



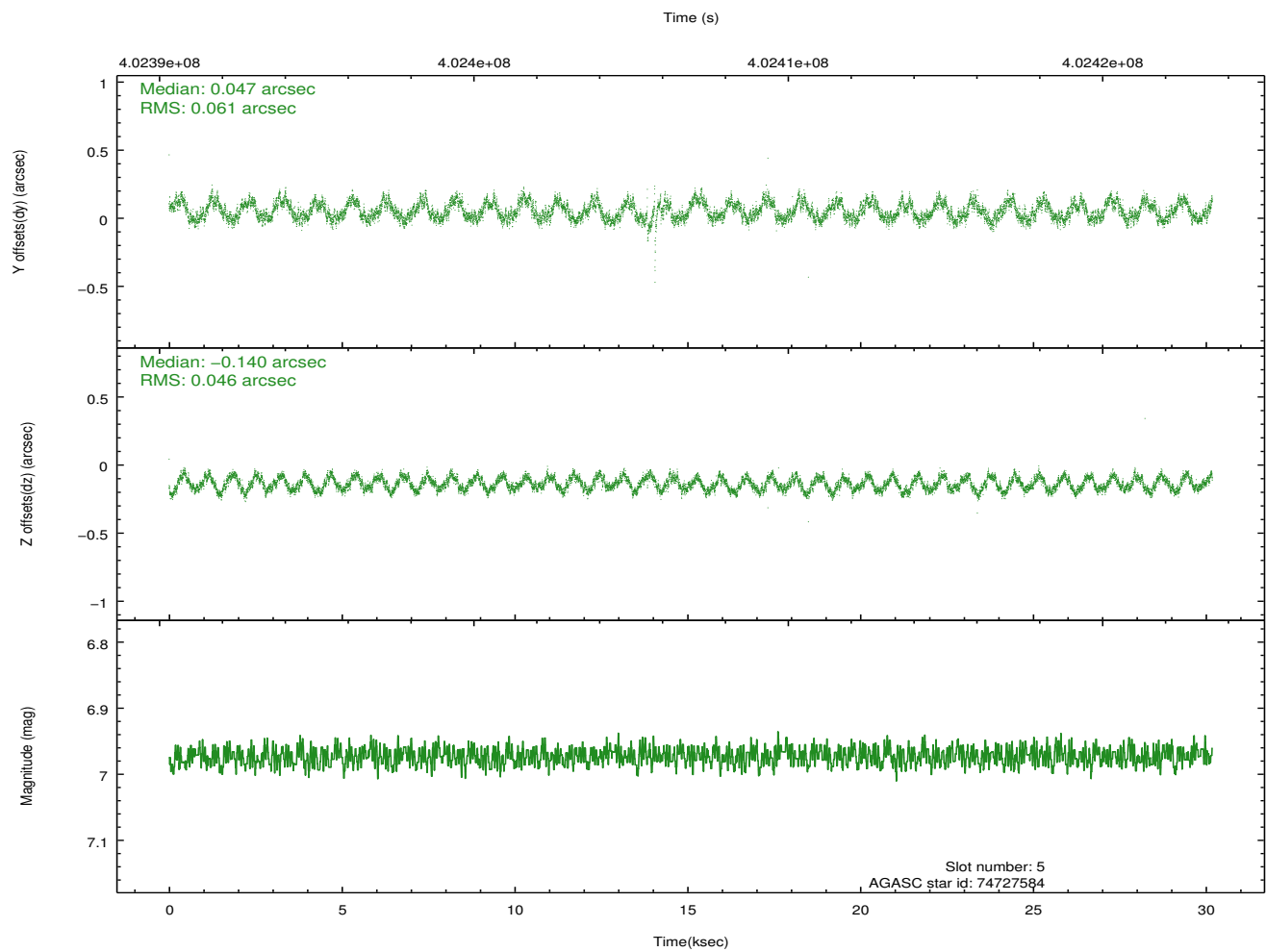
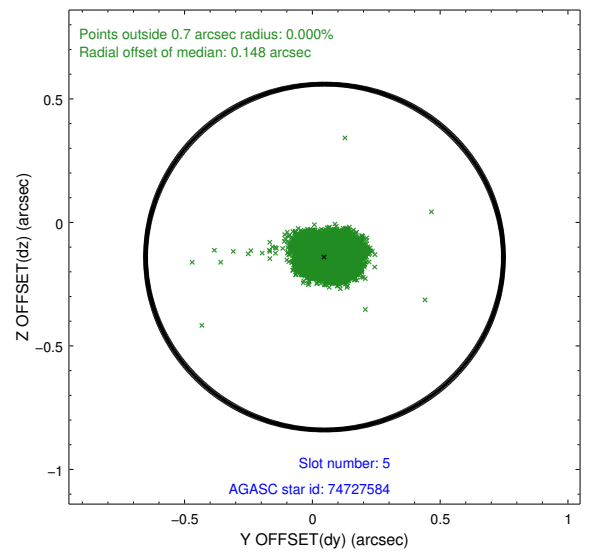
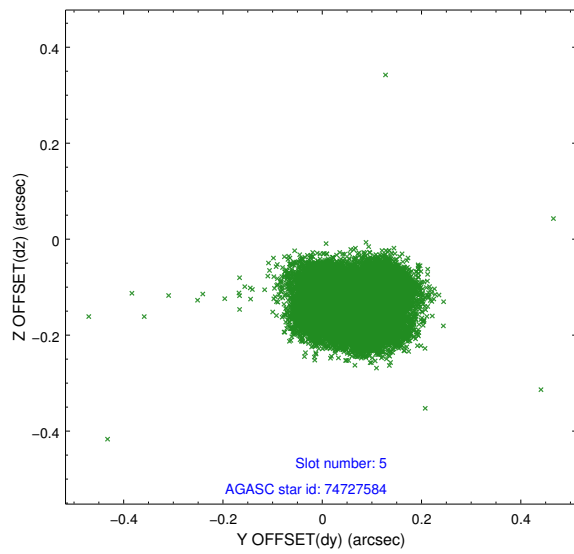
2.4.2 Slot 4



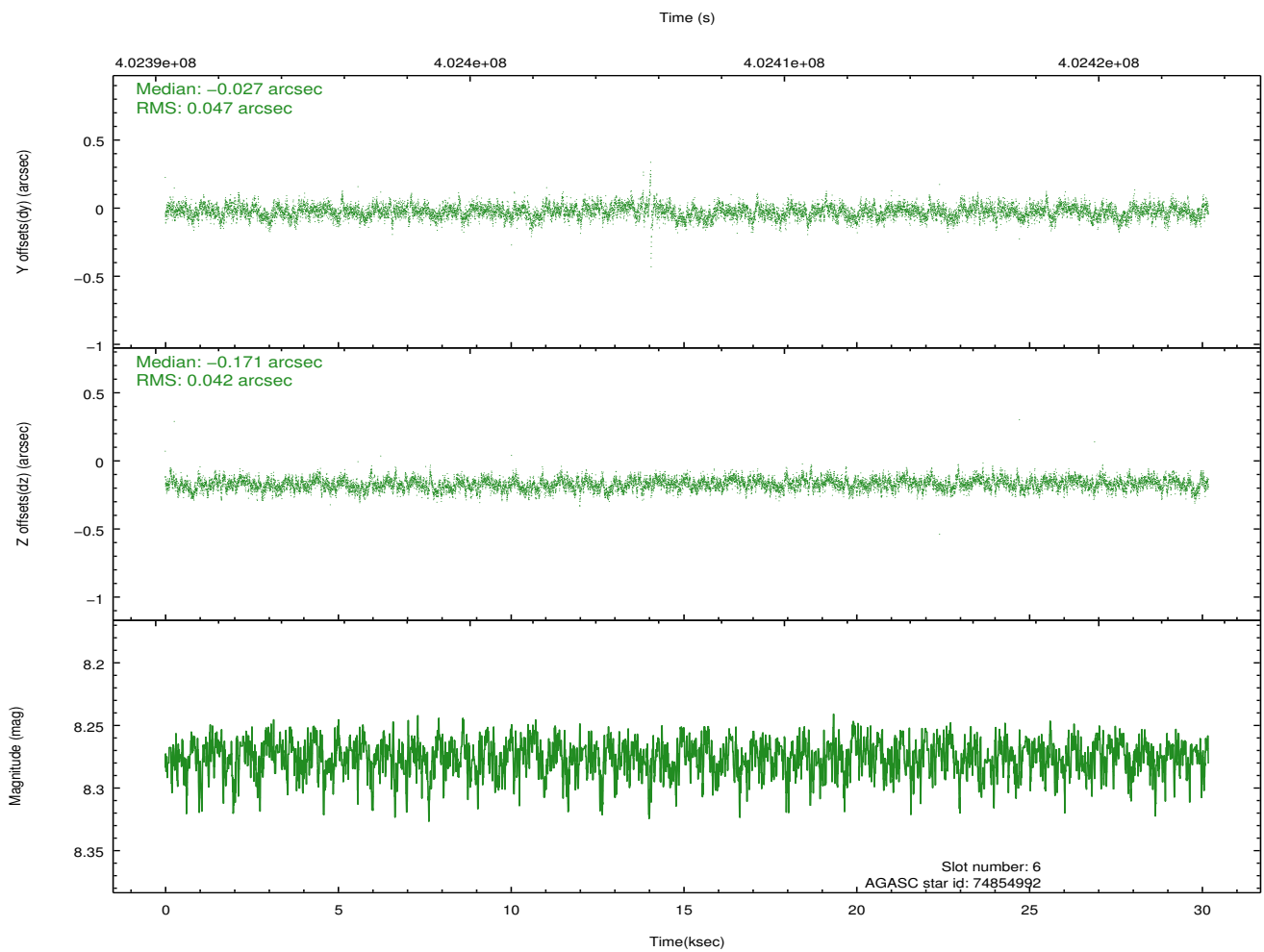
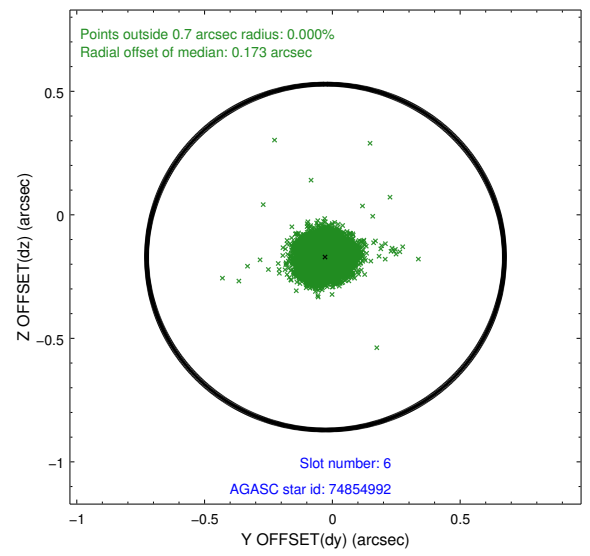
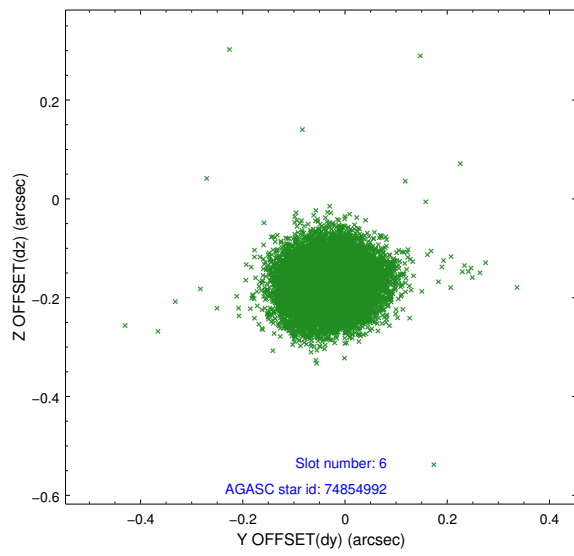
Time (s)



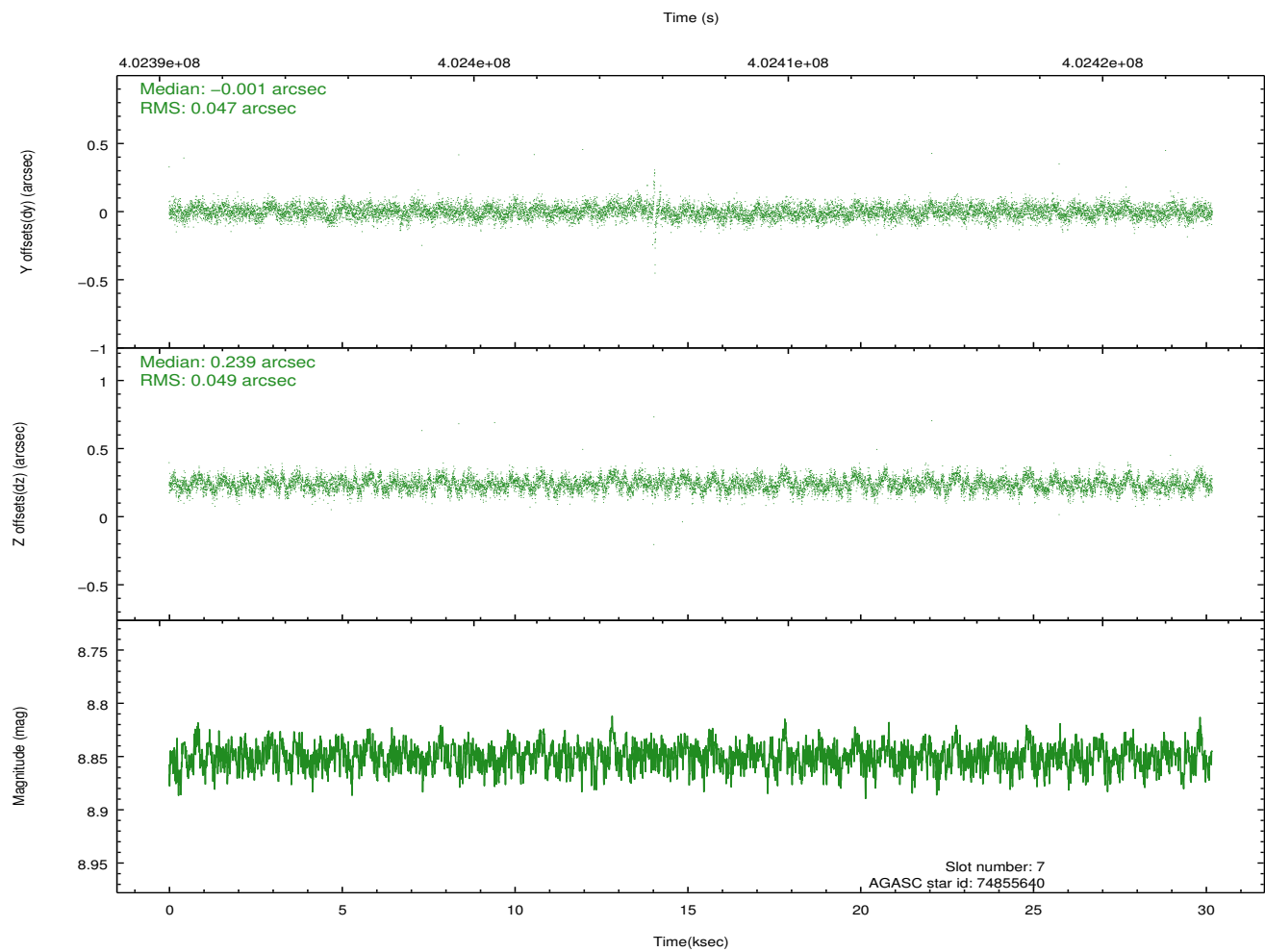
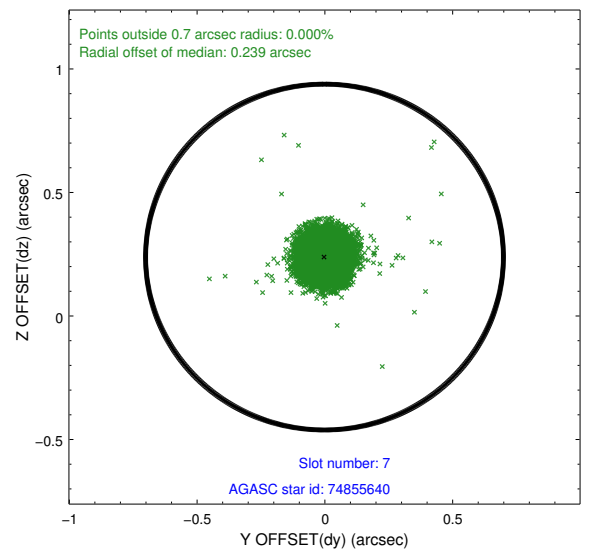
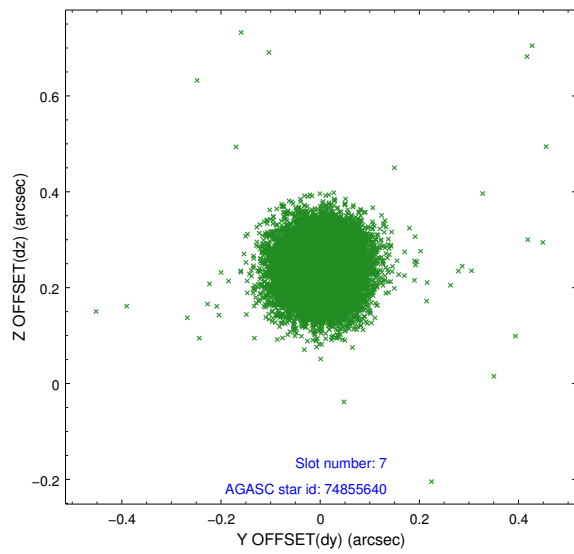
2.4.3 Slot 5



2.4.4 Slot 6

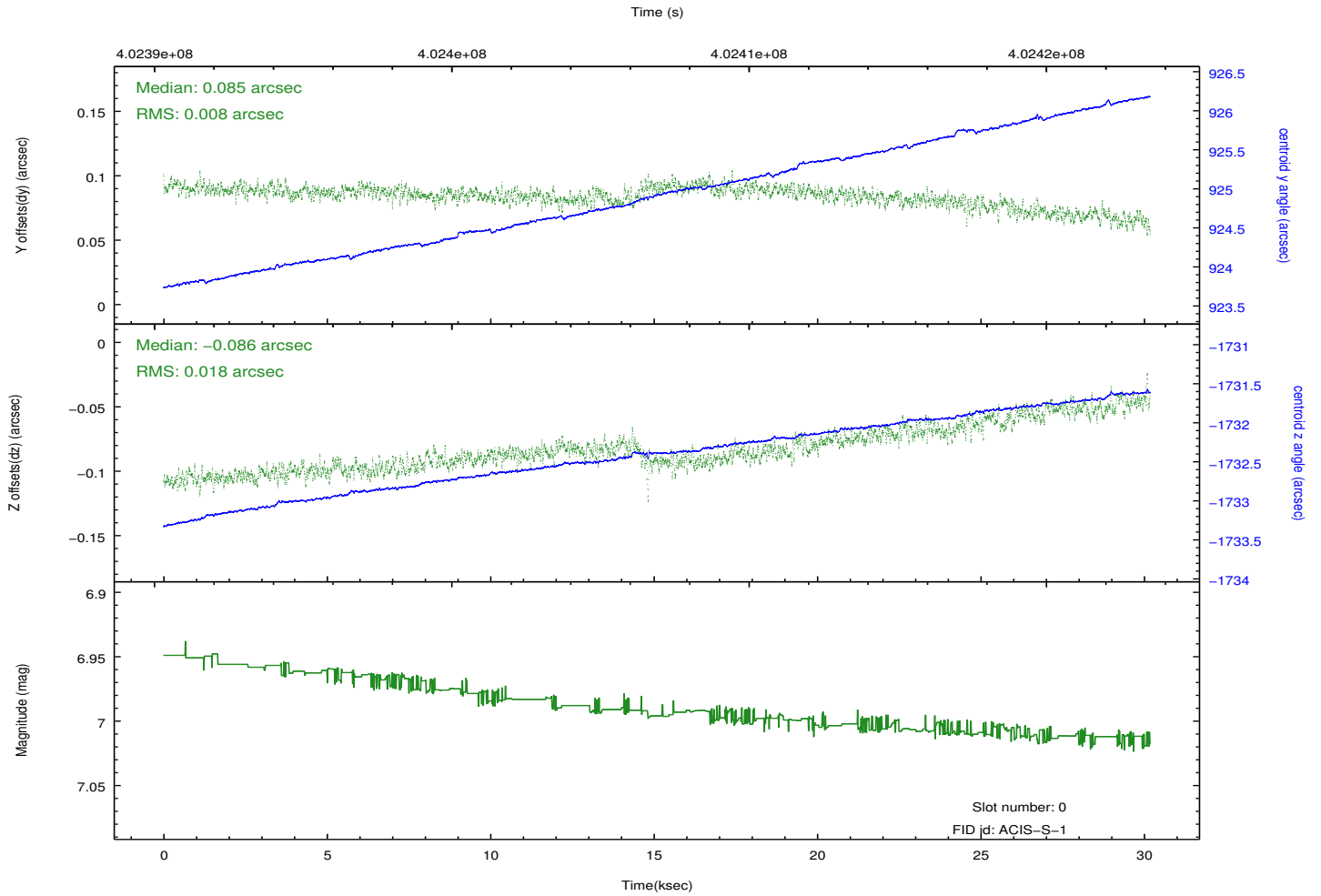
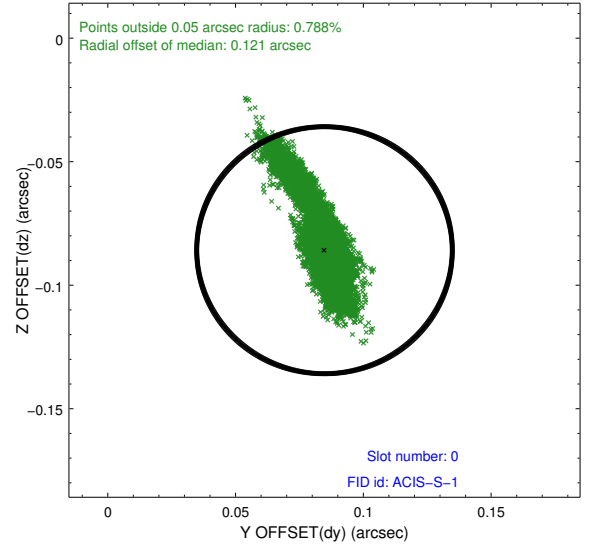
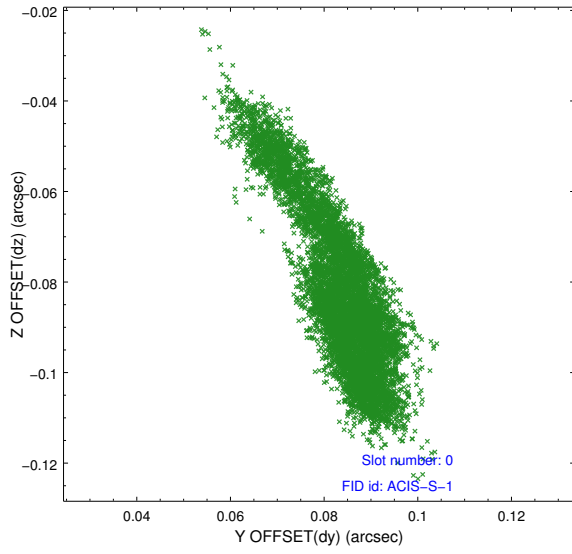


2.4.5 Slot 7

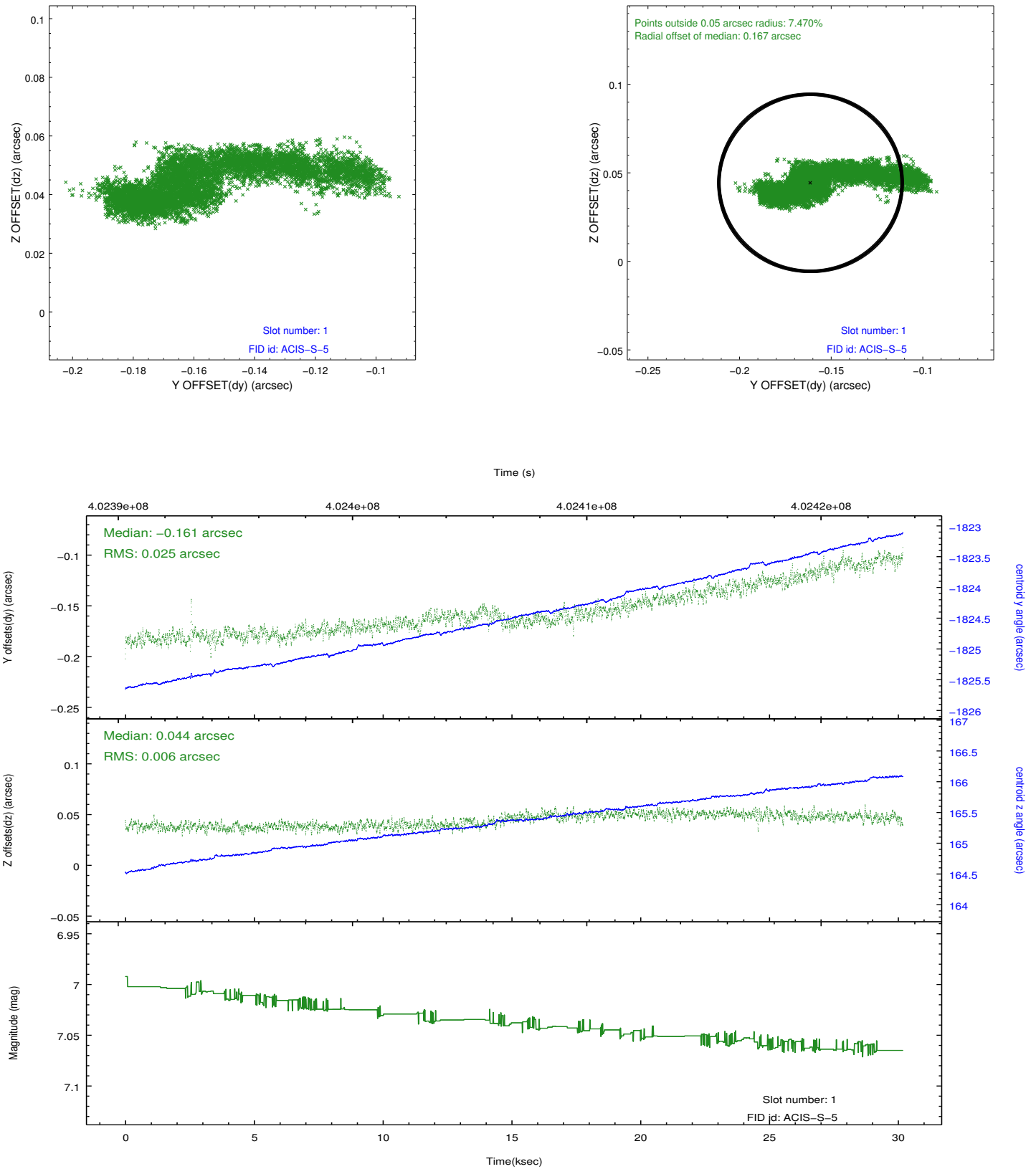


2.5 FID Slots

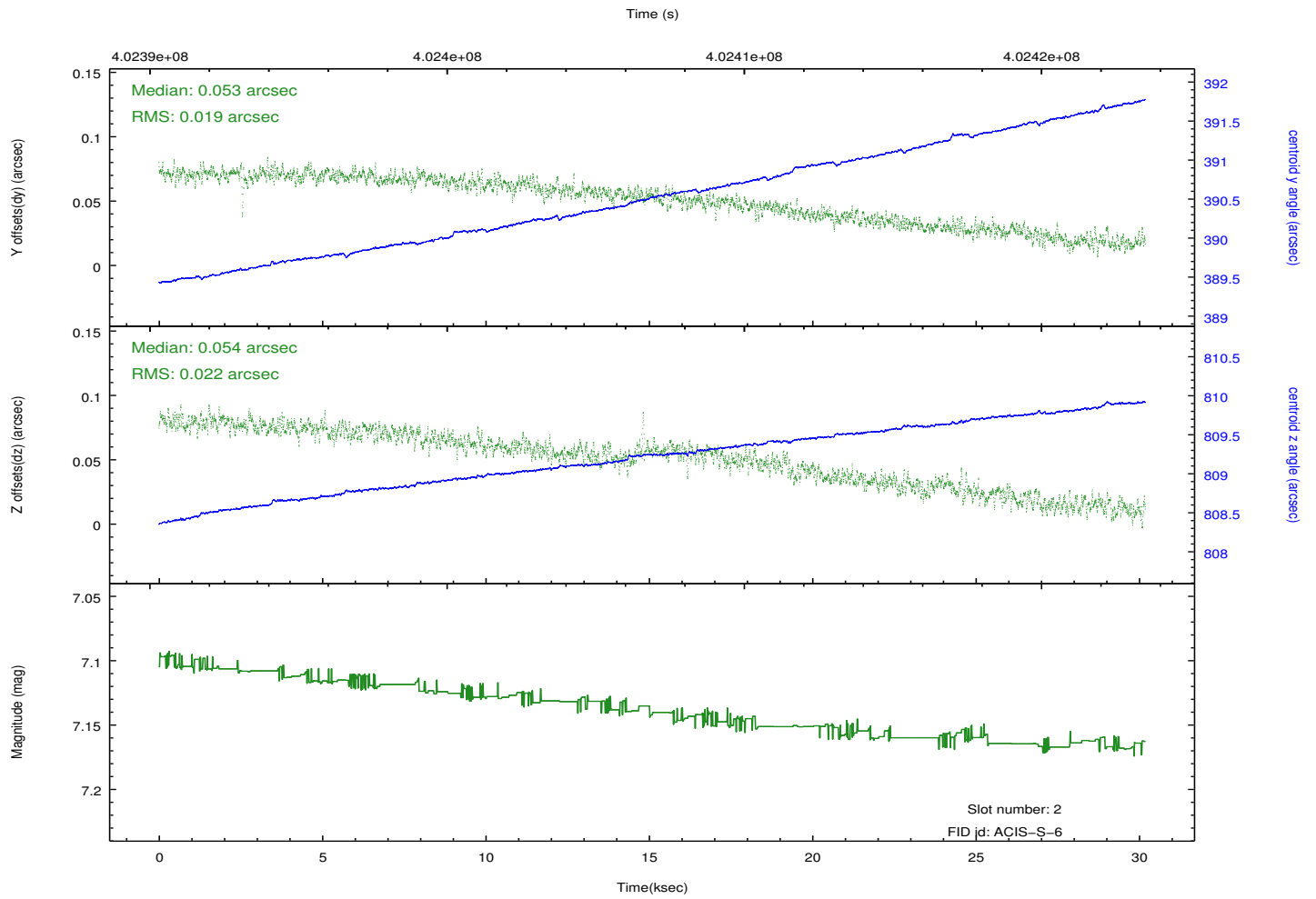
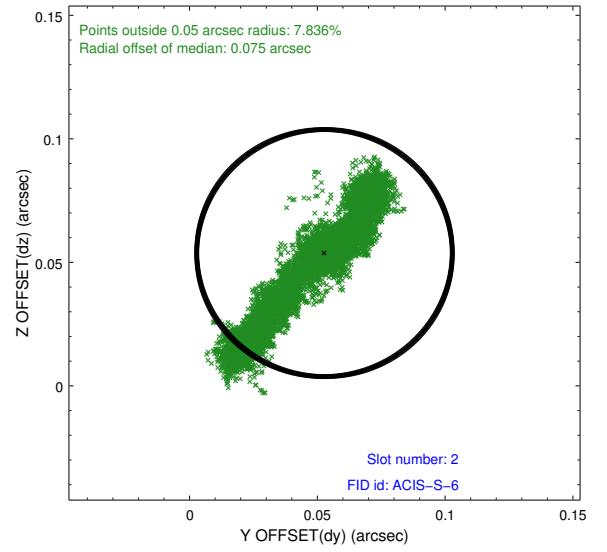
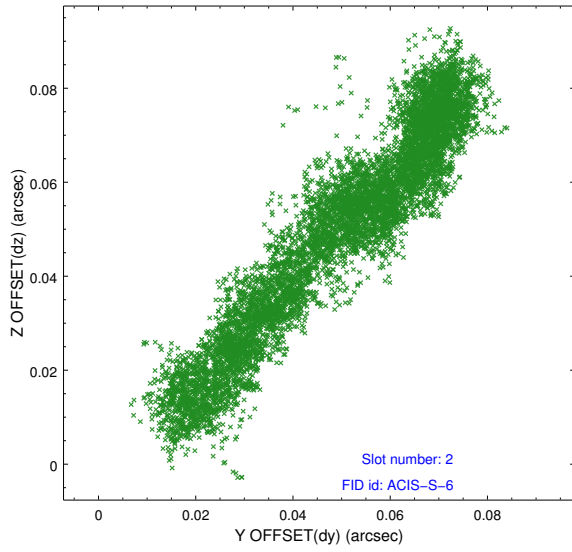
2.5.1 Slot 0



2.5.2 Slot 1



2.5.3 Slot 2



A Summary

A.1 Status

V&V Scientist	Jen Lauer
V&V Date (YYYY-MM-DD)	2012.07.12
V&V Edition	1
V&V Disposition and Status	OK
V&V Charge Time	30.06279978925

A.2 Comments