

V&V Reference Report

L2 ASCDS Version : 8.4.5

Observation 11668 - L2 Version 2
Chandra X-Ray Center

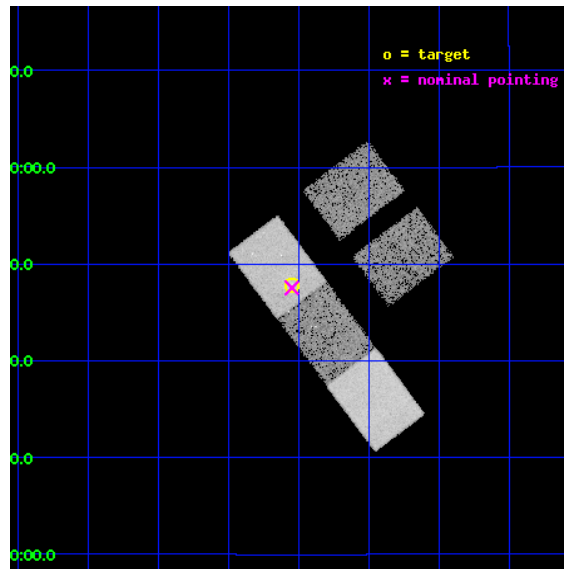
L2 Processing Date : Jun 13 2012

Contents

1	Front	2
2	OBI	3
2.1	OBI	3
2.1.1	Images	3
2.1.2	Bias	3
2.1.3	Parameters	4
2.1.4	Events	4
2.2	Compared Parameters	5
2.3	Aspect	6
2.4	Star Slots	9
2.4.1	Slot 3	9
2.4.2	Slot 4	10
2.4.3	Slot 5	11
2.4.4	Slot 6	12
2.4.5	Slot 7	13
2.5	FID Slots	14
2.5.1	Slot 0	14
2.5.2	Slot 1	15
2.5.3	Slot 2	16
A	Summary	17
A.1	Status	17
A.2	Comments	17

1 Front

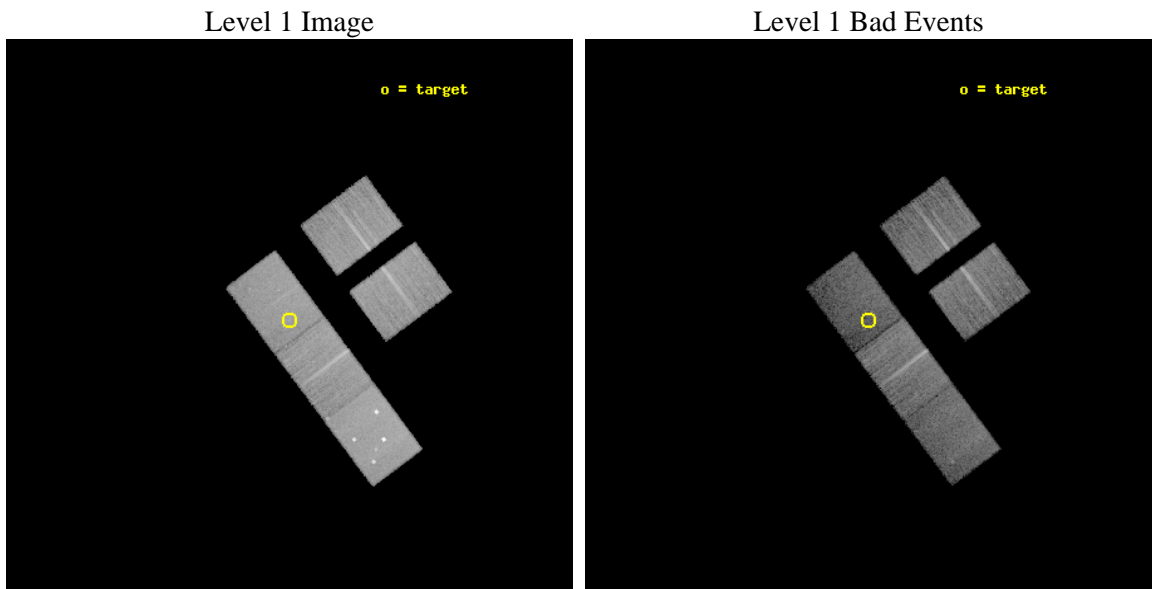
seq_num	702254	Sequence number
obs_id	11668	Observation id
title	Chandra deciphers the Optically 'Dull' X-ray Bright Galaxies at z~0.	Proposal title
observer	Dr. Anca Constantin	Principal investigator
object	SDSS J212402.97+114750.3	Source name
dtycycle	0	
cycle	P	events from which exps? Prim/Second/Both
ra_targ	321.0125	Observer's specified target RA [deg]
dec_targ	11.797333	Observer's specified target Dec [deg]
ra_nom	321.01207644862	Nominal RA [deg]
dec_nom	11.792491035512	Nominal Dec [deg]
roll_nom	233.11483388654	Nominal Roll [deg]
revision	2	Processing version of data
ontime	14224.799858689	Sum of GTIs [s]
livetime	13985.645323655	Livetime [s]
ontime2	14224.799858689	Sum of GTIs [s]
ontime3	14222.358838499	Sum of GTIs [s]
ontime5	14224.799858689	Sum of GTIs [s]
ontime6	14224.799858689	Sum of GTIs [s]
ontime7	14224.799858689	Sum of GTIs [s]
l2events	122118	Number of level 2 events



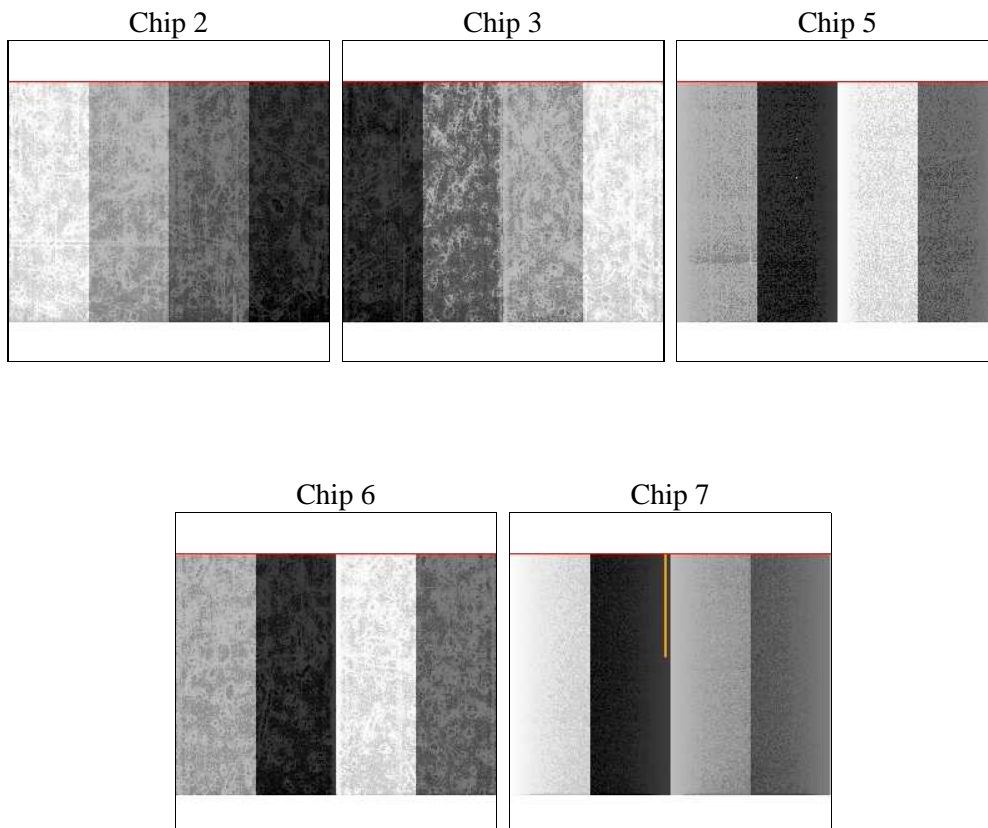
2 OBI

2.1 OBI

2.1.1 Images



2.1.2 Bias



2.1.3 Parameters

obi_num	0	Obi number	sched_exp_time	14200.000000	[s] Scheduled observation exposure time
ascdsver	8.4.5	Processing system revision	ontime	14224.799858689	Sum of GTIs [s]
caldbver	4.4.10	 	ontime2	14224.799858689	Sum of GTIs [s]
date	2012-06-13T02:31:39	Date and time of file creation	ontime3	14222.358838499	Sum of GTIs [s]
revision	2	Processing version of data	ontime5	14224.799858689	Sum of GTIs [s]
			ontime6	14224.799858689	Sum of GTIs [s]
			ontime7	14224.799858689	Sum of GTIs [s]
			l1events	480918	Number of level 1 events

2.1.4 Events

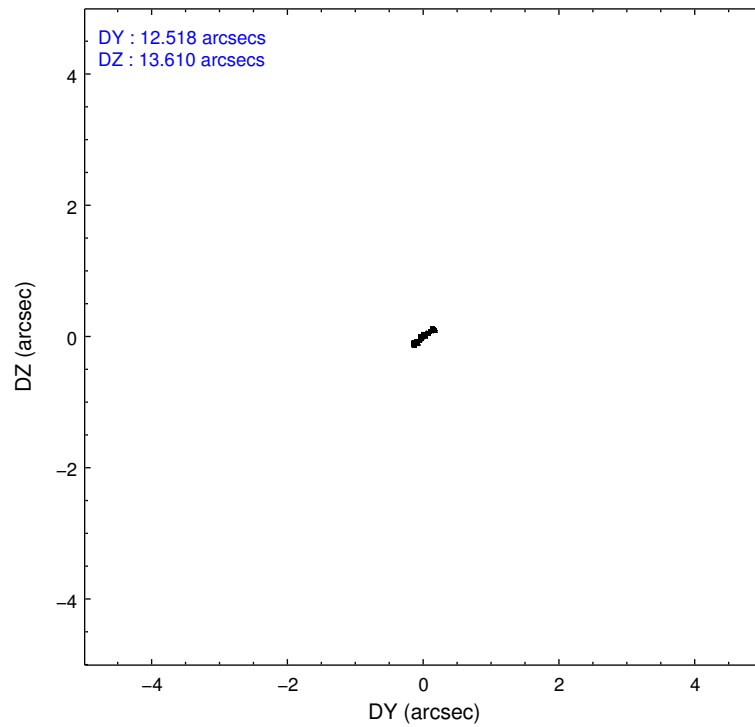
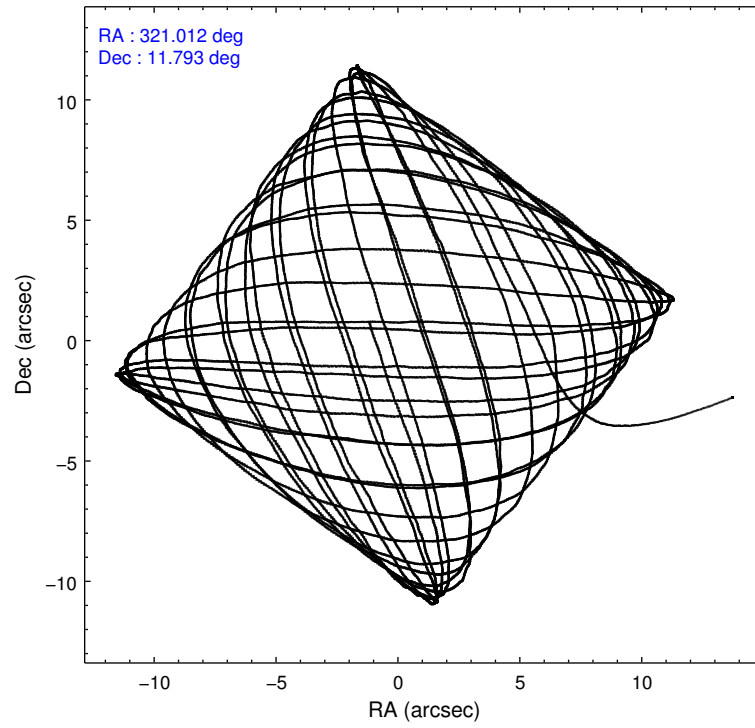
	ccd 2	ccd 3	ccd 5	ccd 6	ccd 7
level 1 events	91553	84786	126327	90262	87990
rejected events	82880	76395	54116	80499	43636
rejected %	90%	90%	42%	89%	49%

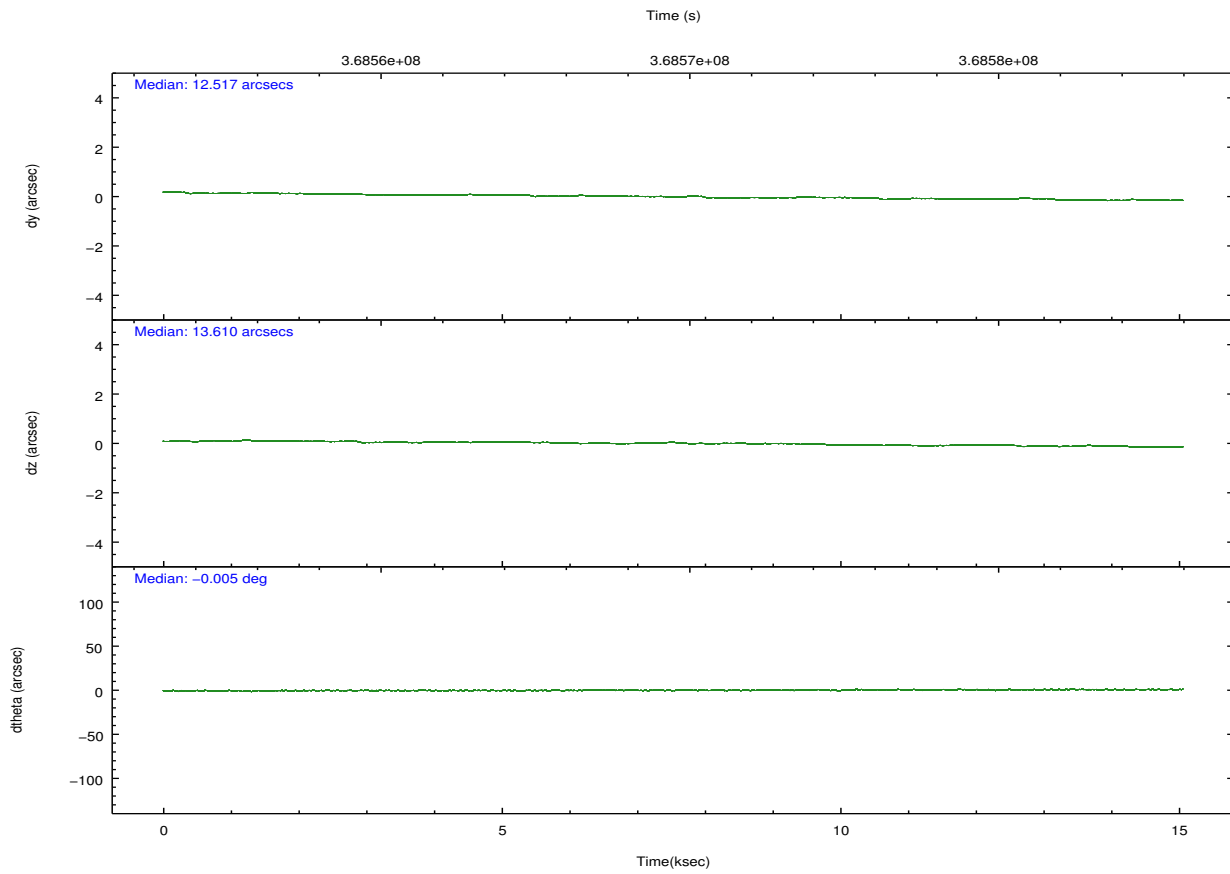
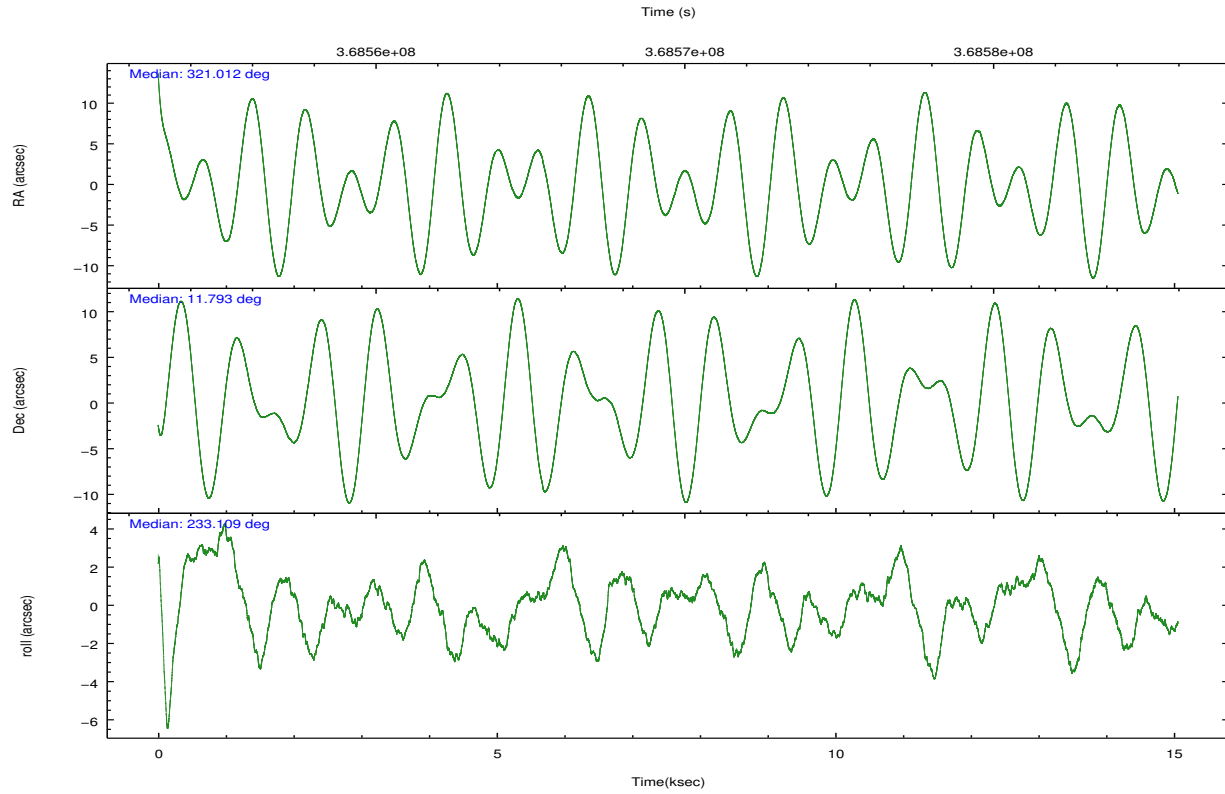
	ccd 2	ccd 3	ccd 5	ccd 6	ccd 7
grade 0 events	3124	3007	16276	3591	4899
	3%	3%	12%	3%	5%
grade 1 events	45	34	337	37	150
	0%	0%	0%	0%	0%
grade 2 events	2076	1837	20578	2080	9731
	2%	2%	16%	2%	11%
grade 3 events	959	1009	2851	1126	4345
	1%	1%	2%	1%	4%
grade 4 events	997	958	2757	1113	4257
	1%	1%	2%	1%	4%
grade 5 events	2509	3115	9393	3113	9303
	2%	3%	7%	3%	10%
grade 6 events	1520	1584	29761	1855	21128
	1%	1%	23%	2%	24%
grade 7 events	80323	73242	44374	77347	34177
	87%	86%	35%	85%	38%

2.2 Compared Parameters

Parameter	Planned	Actual	Parameter	Planned	Actual
Instrument	ACIS	ACIS	Obspar format version number	7	7
Detector	ACIS-23567	ACIS-23567	Obspar file type	PREDICTED	ACTUAL
Grating	NONE	NONE	Obspar update status	NONE	UPDATED
Data mode	FAINT	FAINT	CCD I0 on	N	N
Observation mode	POINTING	POINTING	CCD I1 on	N	N
[deg] Pointing RA	321.015022	321.0120764486165	CCD I2 on	O2	Y
[deg] Pointing Dec	11.819695	11.79249103551181	CCD I3 on	O3	Y
[deg] Pointing Roll	232.957597	233.1148338865442	CCD S0 on	N	N
[mm] SIM focus pos	-0.684267	-0.6828225247311905	CCD S1 on	O1	Y
[mm] SIM defocus	0	0.001444936568705701	CCD S2 on	O4	Y
[mm] SIM translation stage pos	-190.132523	-190.1400660498719	CCD S3 on	Y	Y
[mm] SIM translation stage offset	0	0.00754346686406393	CCD S4 on	N	N
[s] Observation start time (MET)	368563059.184000	368560959.17642	CCD S5 on	N	N
Observation start date	2009-09-05T18:36:33	2009-09-05T18:02:39	Number of optional ACIS chips dropped	0	0
[s] Observation end time (MET)	368577259.184000	368578577.90231	On-chip summing requested	N	N
Observation end date	2009-09-05T22:33:13	2009-09-05T22:56:17	Subarray requested	CUSTOM	CUSTOM
Read mode	TIMED	TIMED	Subarray start row	128	128
			Subarray row count	768	768
			Alternating exposures requested	N	N
			[s] Primary exposure time	0.000000	2.4

2.3 Aspect



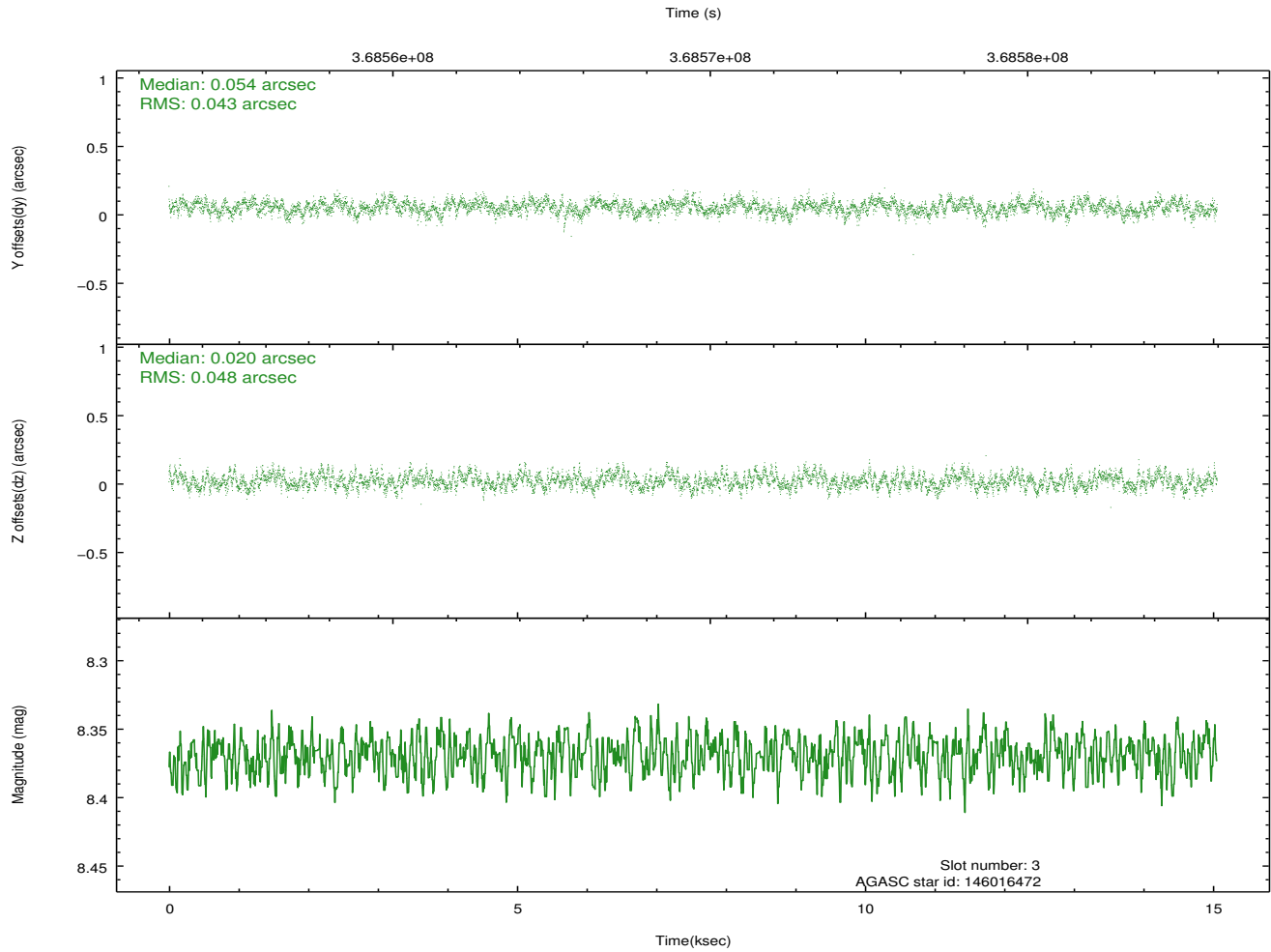
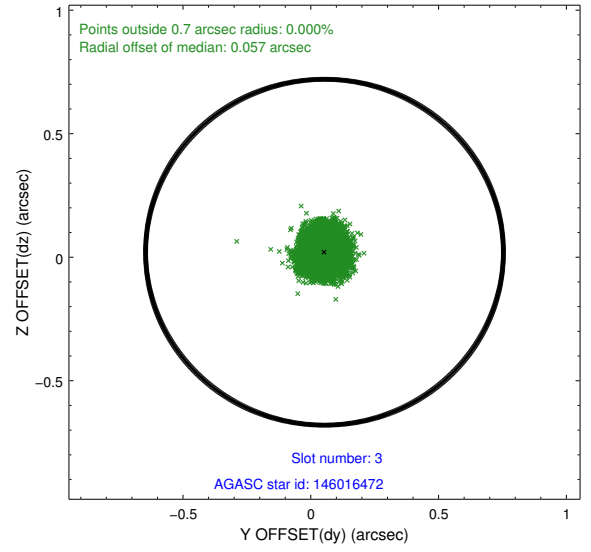
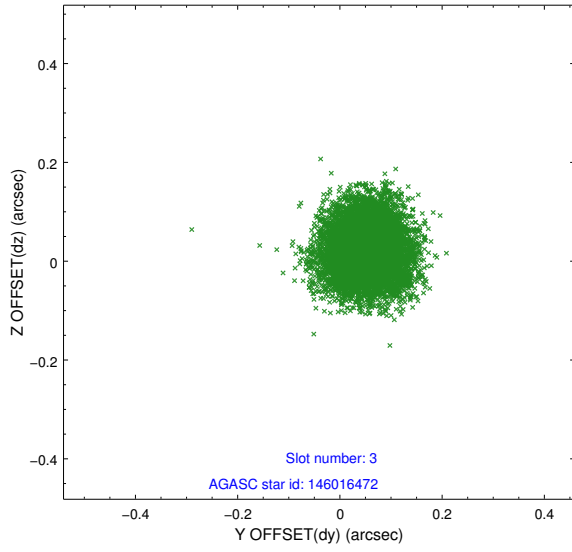


Slot Statistics

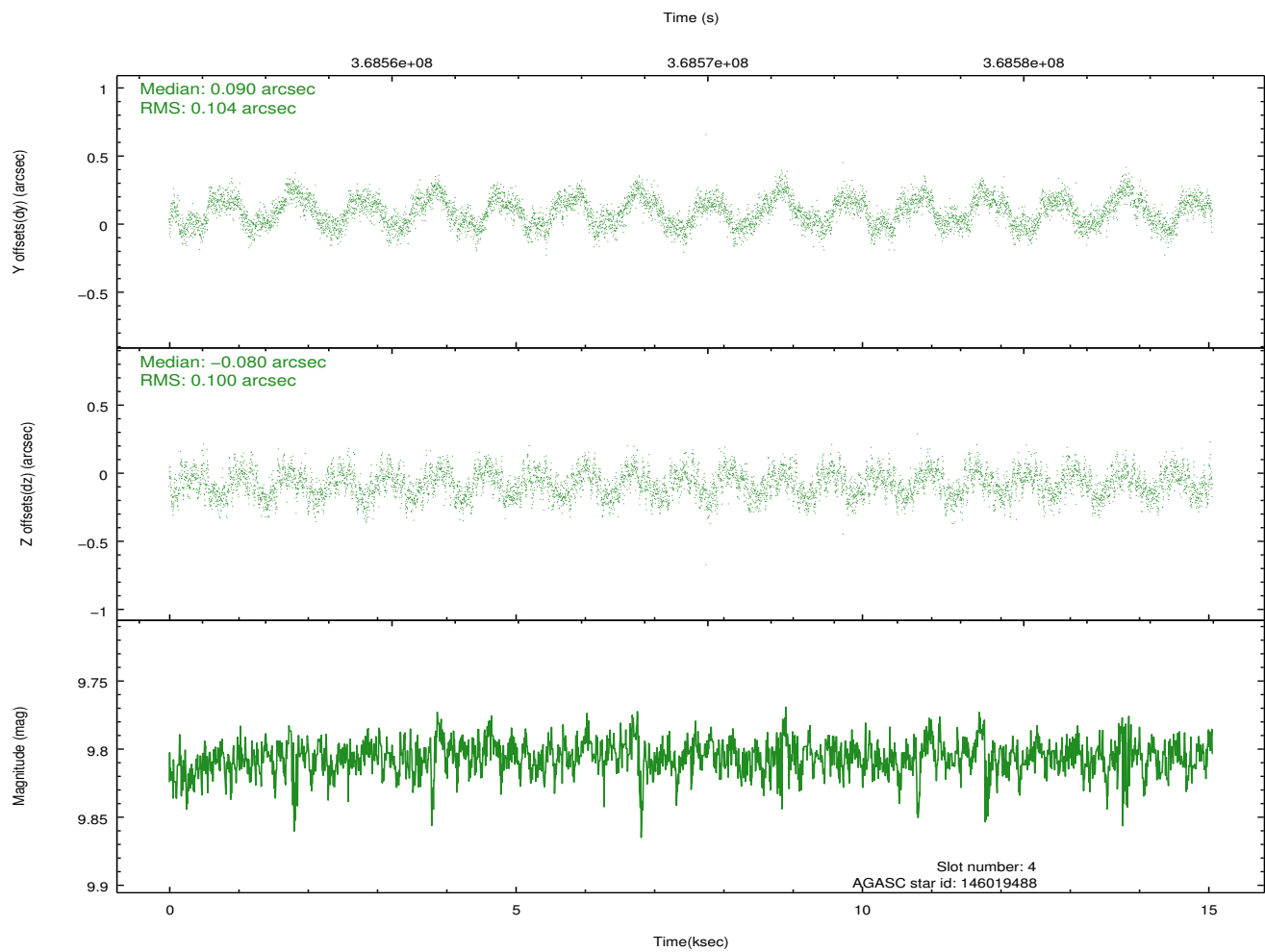
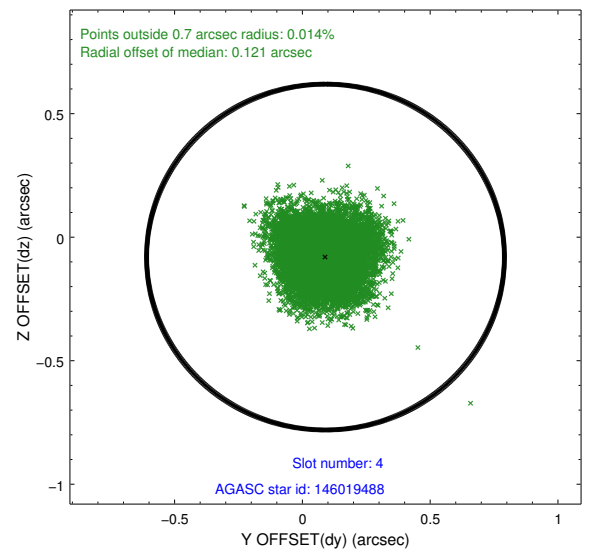
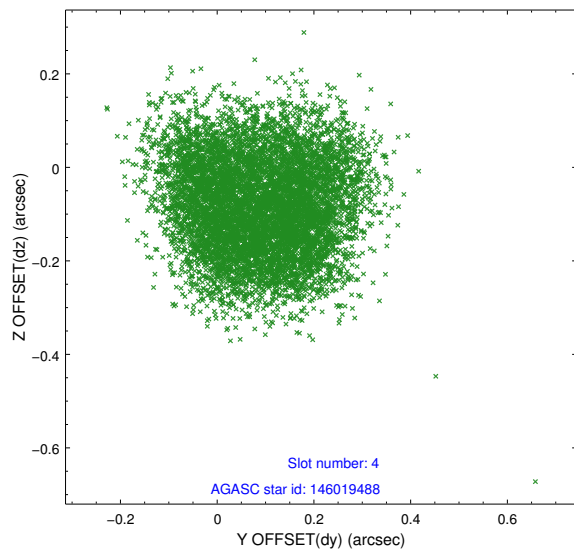
slot	status	id	mag	n_pts	med_dy	med_dz	dr1	dr2	ra	dec	mean_y	mean_z
0	FID	ACIS-S-1	6.97	3673	0.069	-0.028	0.007	0.011	0.000000	0.000000	930.67	-1730.61
1	FID	ACIS-S-4	6.97	3673	0.106	-0.009	0.008	0.013	0.000000	0.000000	2148.29	173.25
2	FID	ACIS-S-5	7.01	3672	-0.202	0.050	0.008	0.014	0.000000	0.000000	-1818.08	167.26
3	GUIDE	146016472	8.37	7341	0.054	0.020	0.070	0.110	321.362185	11.346041	622.35	2005.13
4	GUIDE	146019488	9.81	7331	0.090	-0.080	0.158	0.236	320.733282	12.281024	-728.54	-1790.85
5	GUIDE	146023576	7.86	7340	-0.021	-0.000	0.074	0.117	321.384776	11.650495	-300.39	1407.54
6	GUIDE	147732752	9.06	7340	-0.063	0.015	0.097	0.156	321.797195	11.999048	-2177.71	1807.54
7	GUIDE	146017648	9.52	7326	-0.063	0.045	0.118	0.189	320.942748	12.667032	-2280.59	-2040.09

2.4 Star Slots

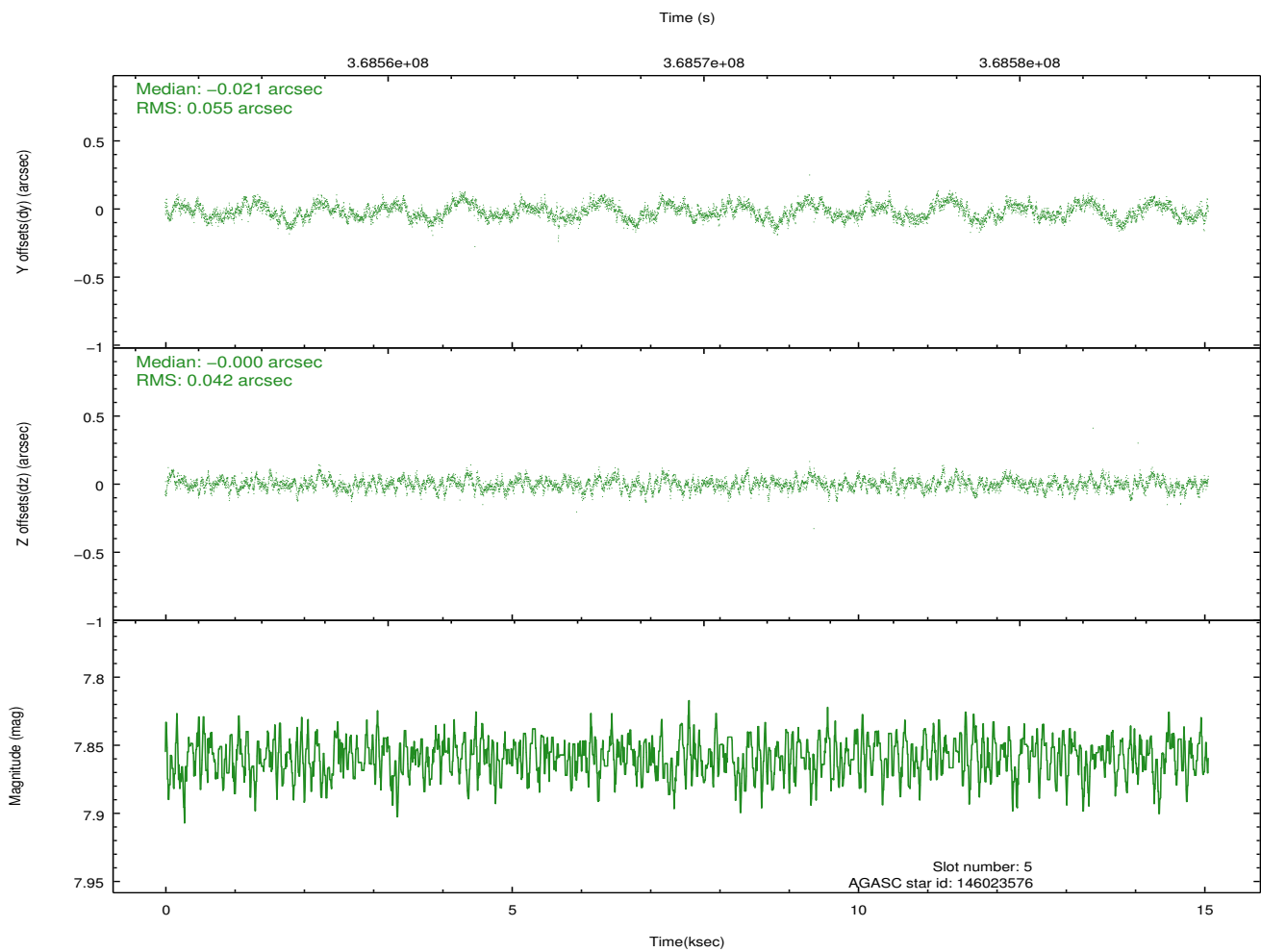
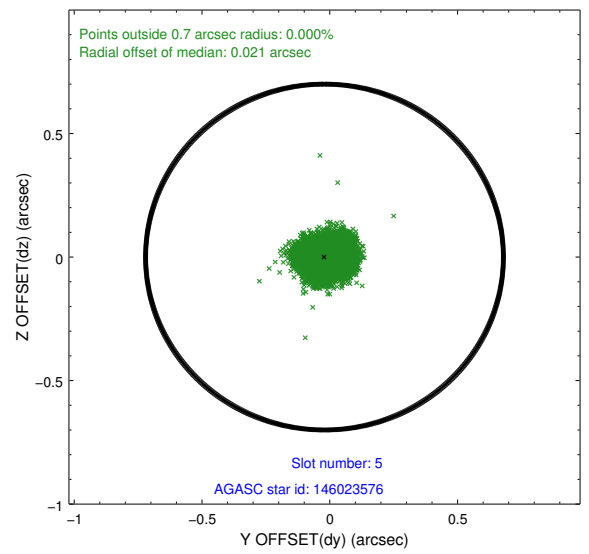
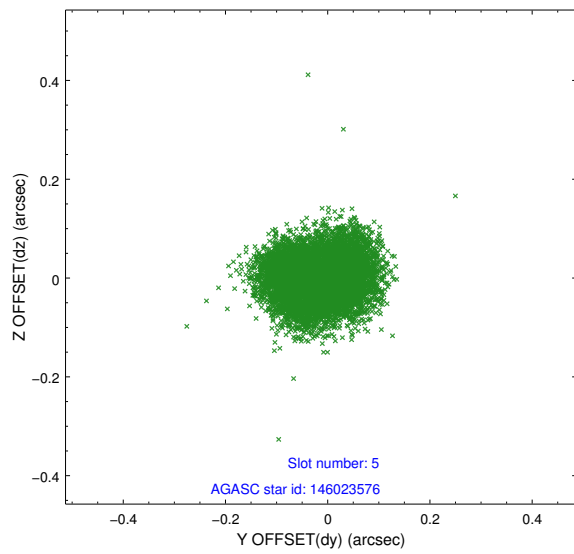
2.4.1 Slot 3



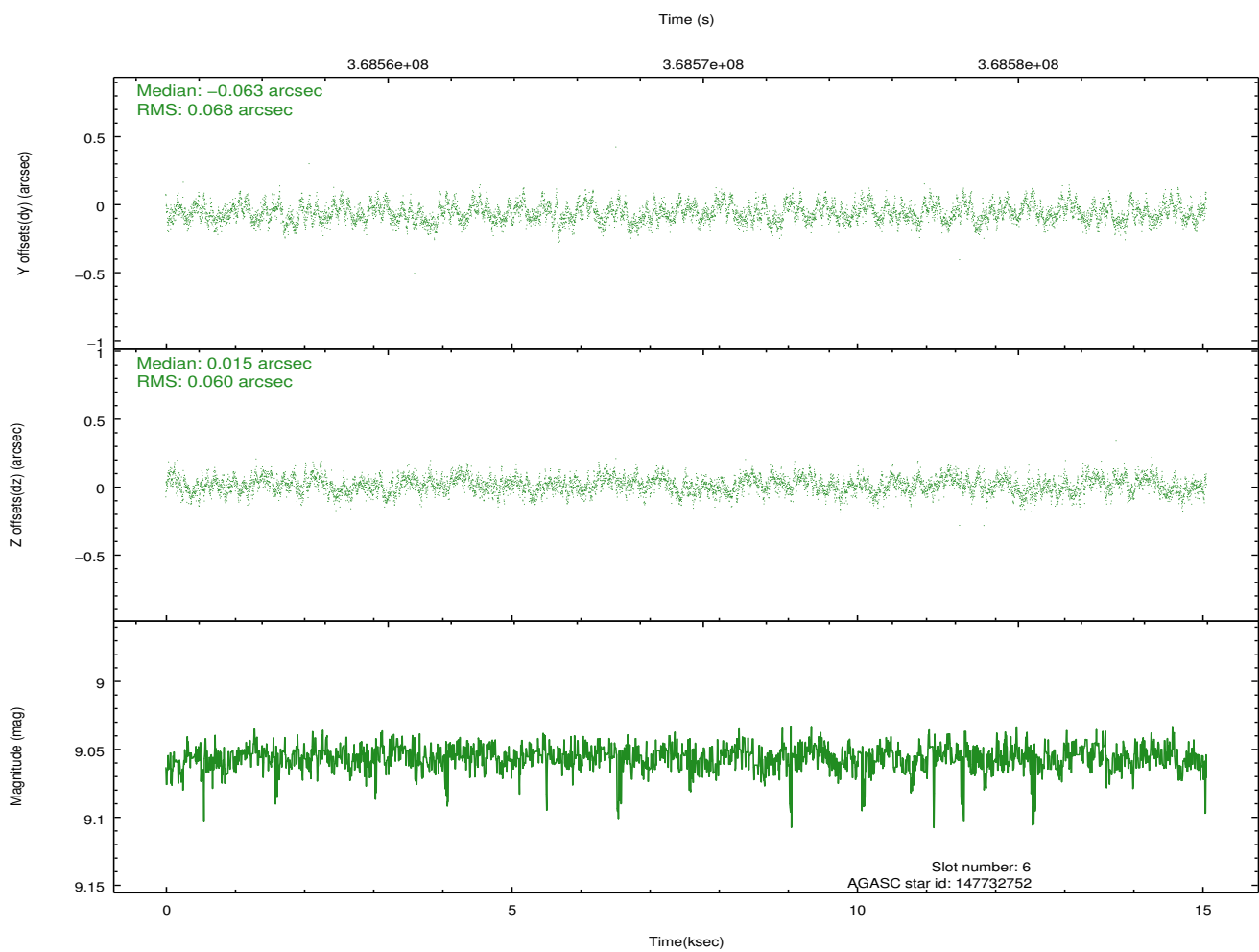
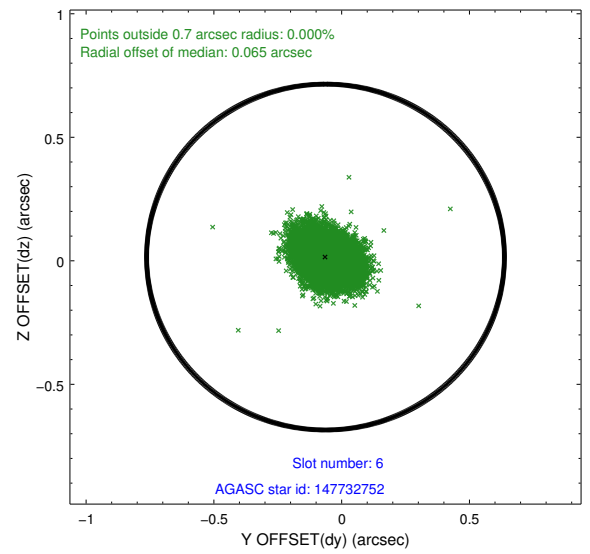
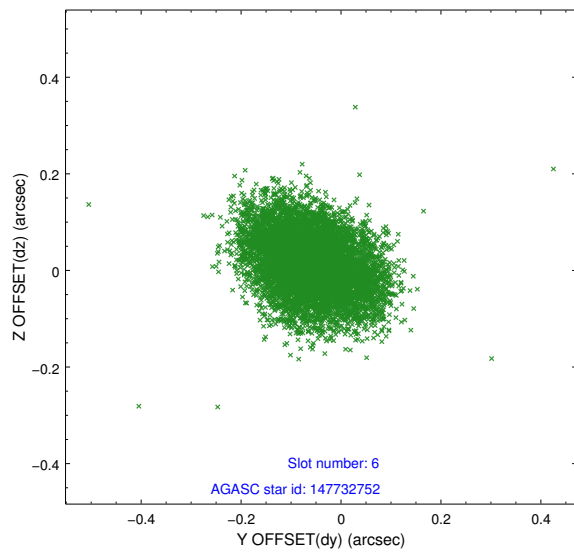
2.4.2 Slot 4



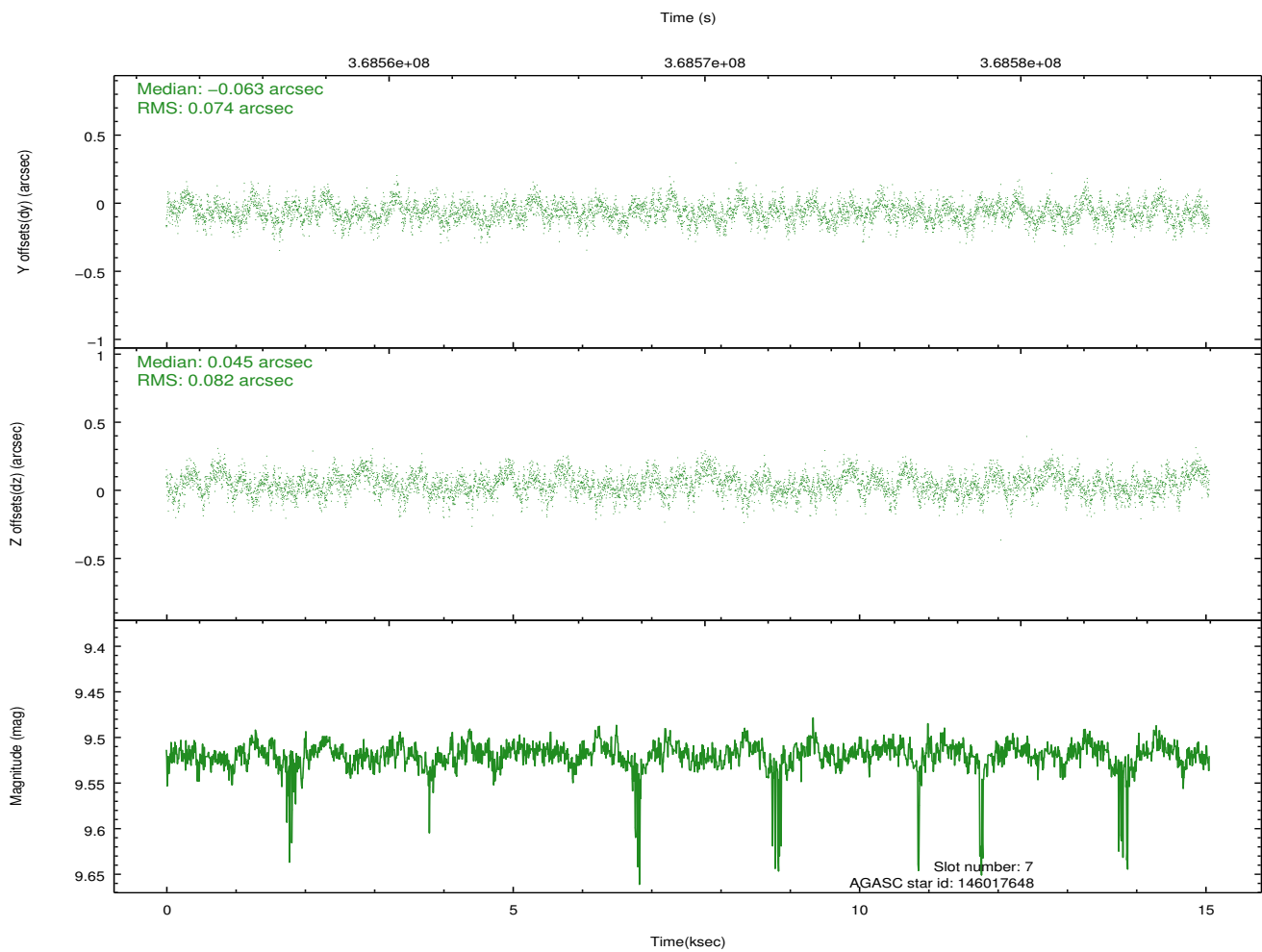
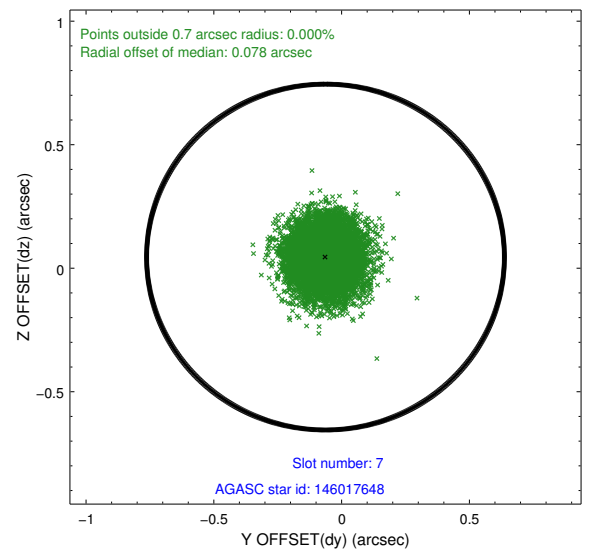
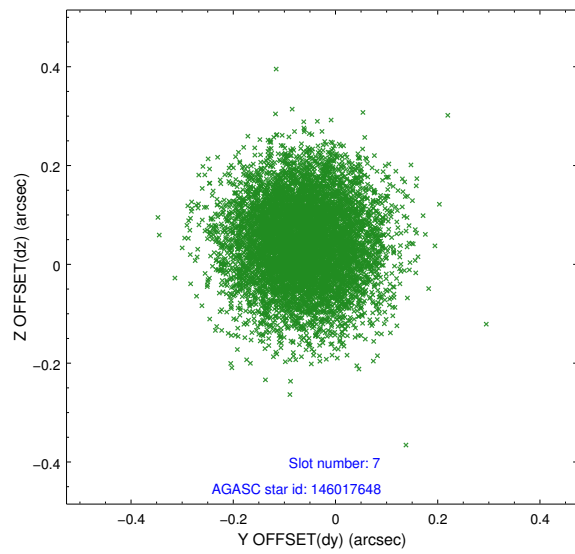
2.4.3 Slot 5



2.4.4 Slot 6

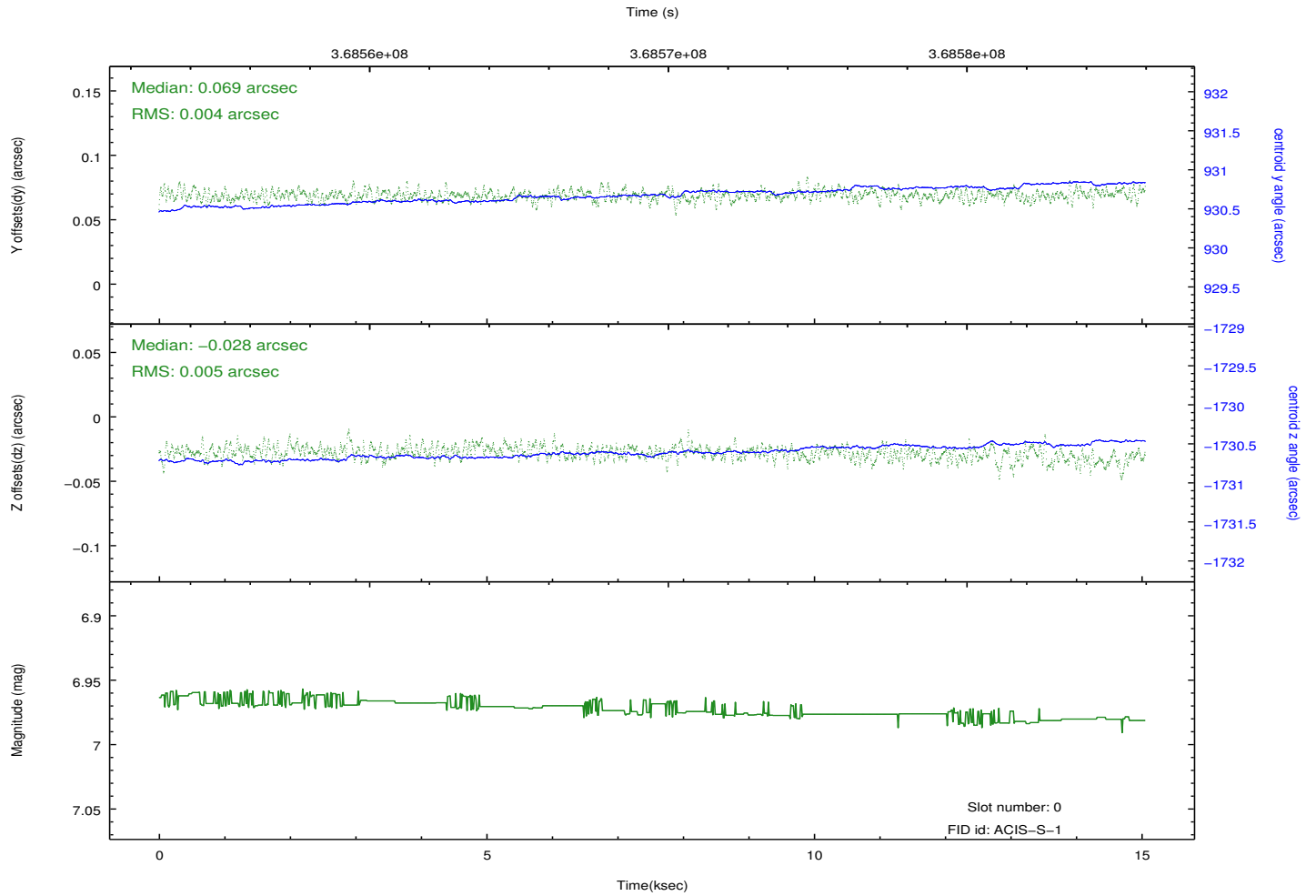
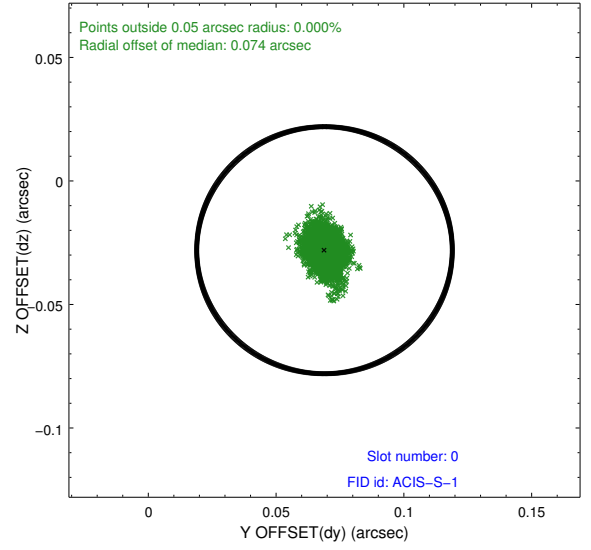
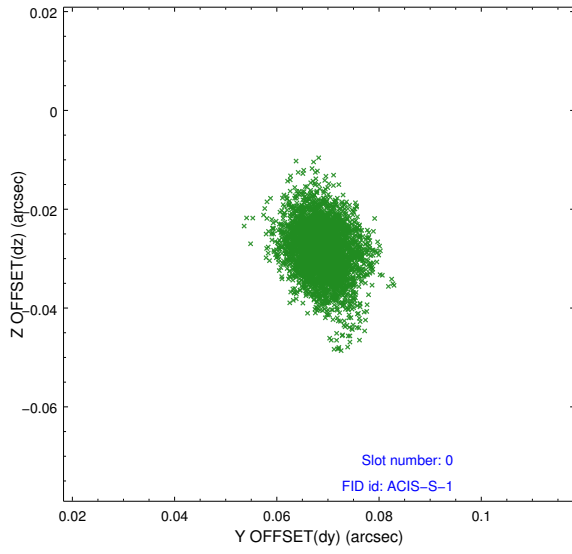


2.4.5 Slot 7

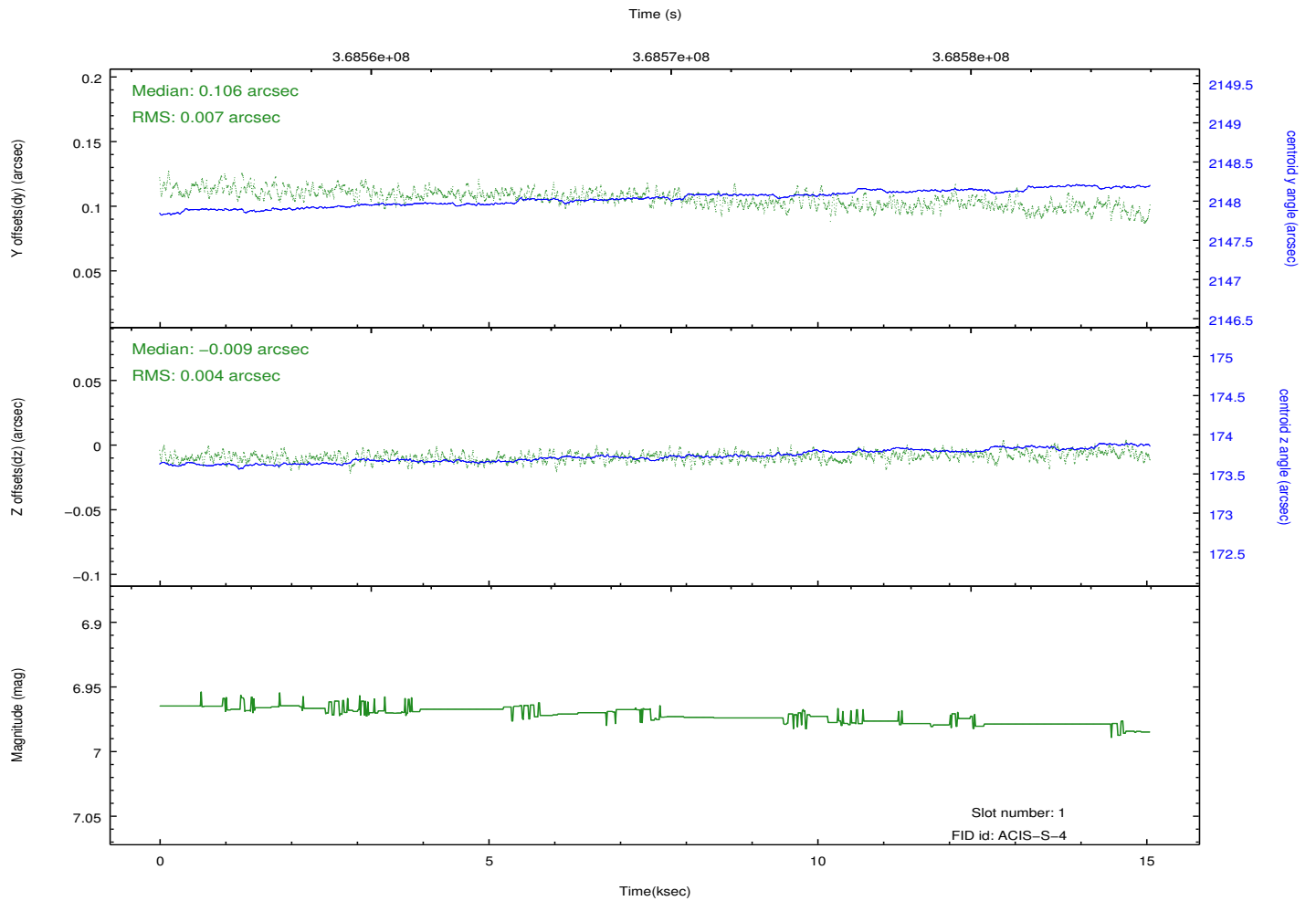
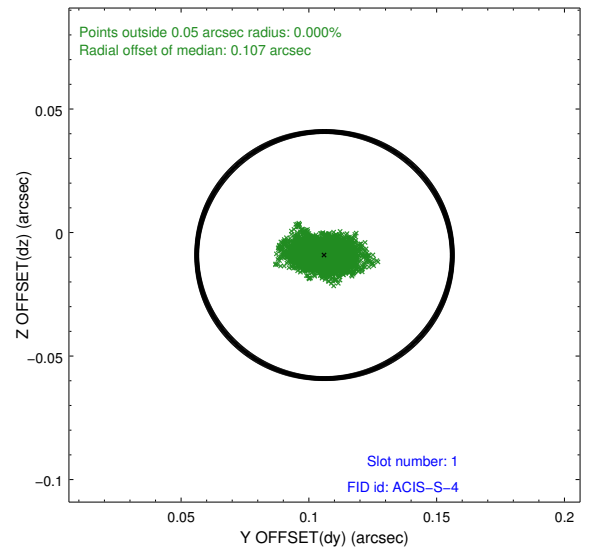
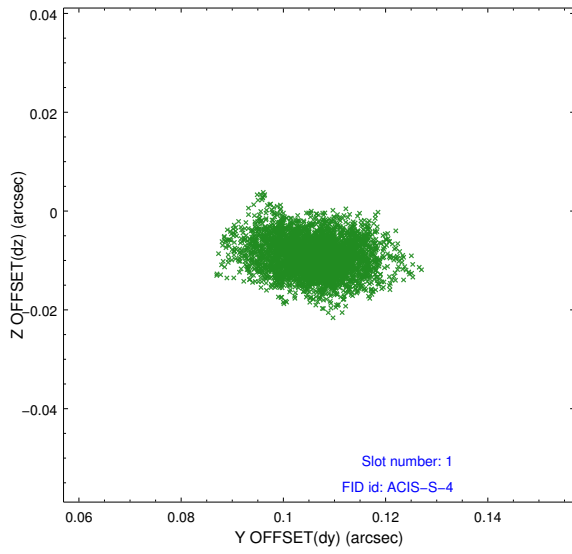


2.5 FID Slots

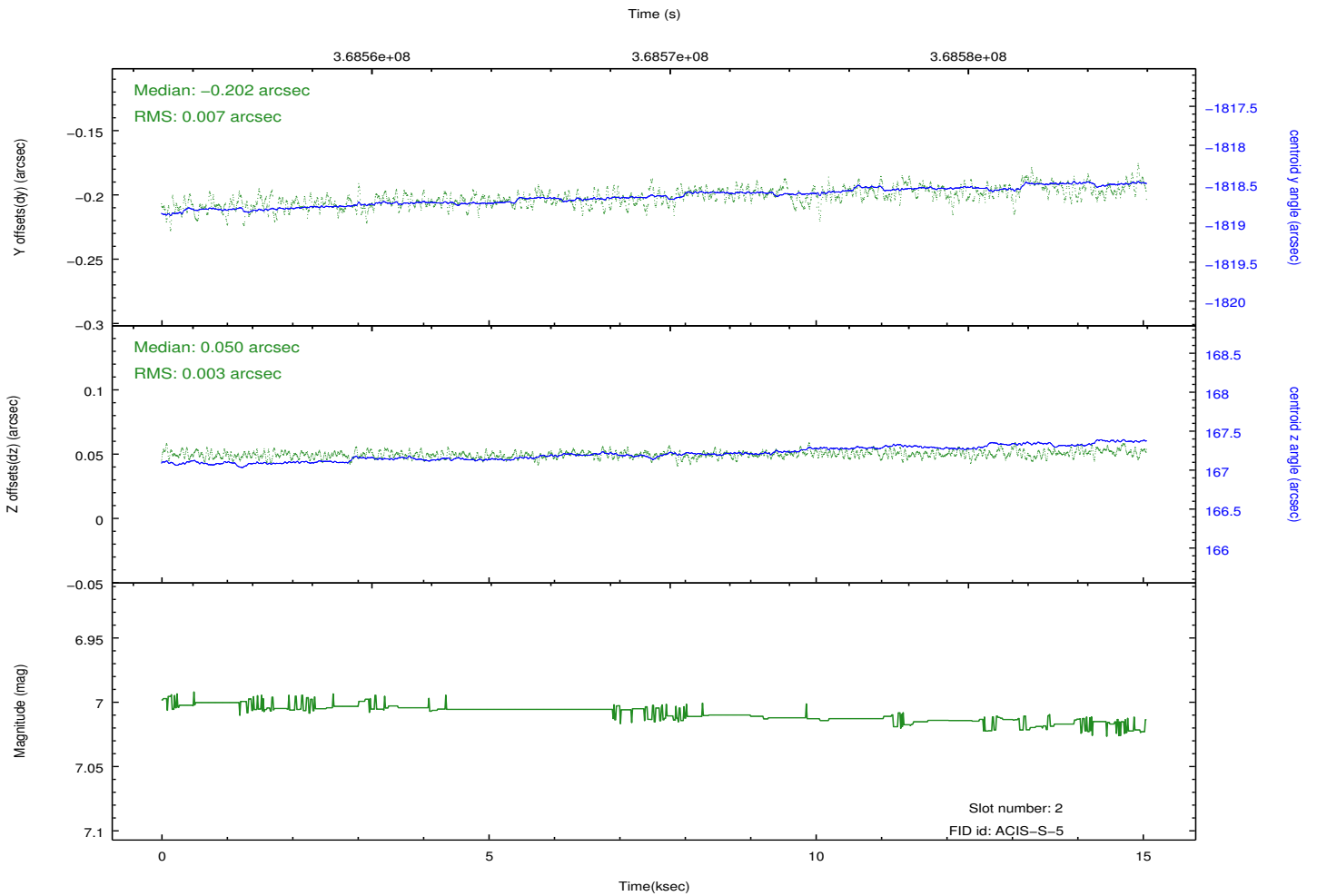
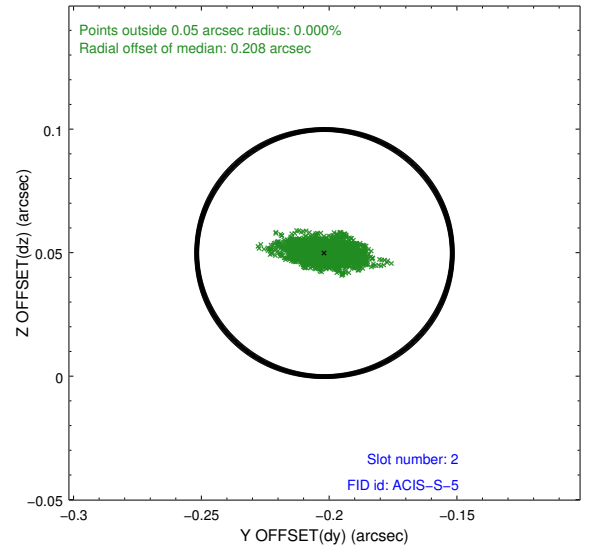
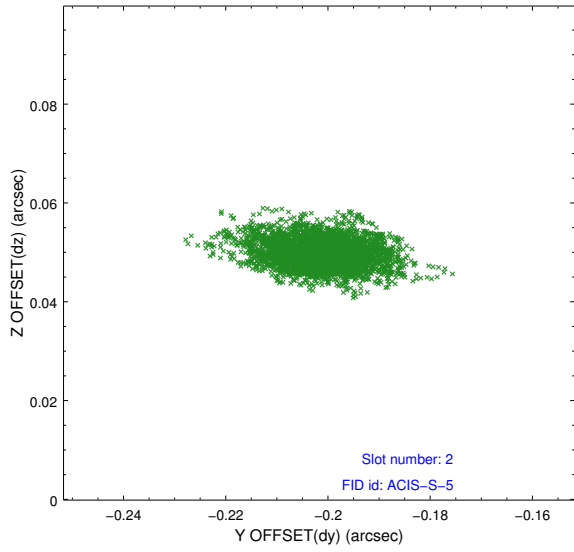
2.5.1 Slot 0



2.5.2 Slot 1



2.5.3 Slot 2



A Summary

A.1 Status

V&V Scientist	Jen Lauer
V&V Date (YYYY-MM-DD)	2012.06.15
V&V Edition	1
V&V Disposition and Status	OK
V&V Charge Time	14.224549009025

A.2 Comments