

V&V Reference Report

L2 ASCDS Version : 8.4.5

Observation 11788 - L2 Version 2
Chandra X-Ray Center

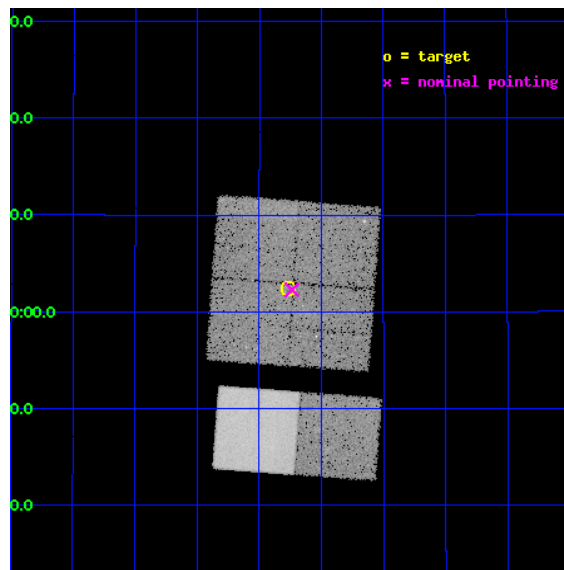
L2 Processing Date : Jun 12 2012

Contents

1	Front	2
2	OBI	3
2.1	OBI	3
2.1.1	Images	3
2.1.2	Bias	3
2.1.3	Parameters	4
2.1.4	Events	4
2.2	Compared Parameters	5
2.3	Aspect	6
2.4	Star Slots	9
2.4.1	Slot 3	9
2.4.2	Slot 4	10
2.4.3	Slot 5	11
2.4.4	Slot 6	12
2.4.5	Slot 7	13
2.5	FID Slots	14
2.5.1	Slot 0	14
2.5.2	Slot 1	15
2.5.3	Slot 2	16
A	Summary	17
A.1	Status	17
A.2	Comments	17

1 Front

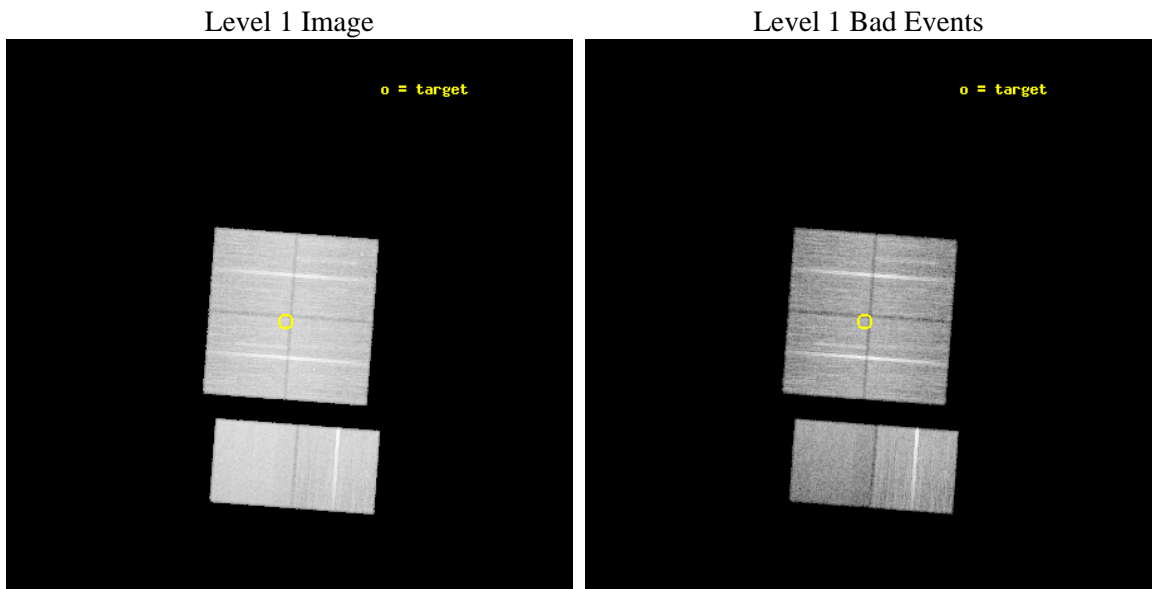
seq_num	900923	Sequence number
obs_id	11788	Observation id
title	Identifying Unidentified Fermi-LAT Objects (UFOs) at High-Latitude	
observer	Dr. C.C. Teddy Cheung	Principal investigator
object	J2214.8+3002	Source name
dtcycle	0	
cycle	P	events from which exps? Prim/Second/Both
ra_targ	333.693	Observer's specified target RA [deg]
dec_targ	30.041	Observer's specified target Dec [deg]
ra_nom	333.68429454766	Nominal RA [deg]
dec_nom	30.038014965603	Nominal Dec [deg]
roll_nom	184.26029478563	Nominal Roll [deg]
revision	2	Processing version of data
ontime	19891.199925959	Sum of GTIs [s]
livetime	19639.325575454	Livetime [s]
ontime0	19891.199925959	Sum of GTIs [s]
ontime1	19891.199925959	Sum of GTIs [s]
ontime2	19891.199925959	Sum of GTIs [s]
ontime3	19891.199925959	Sum of GTIs [s]
ontime6	19887.958925664	Sum of GTIs [s]
ontime7	19891.199925959	Sum of GTIs [s]
l2events	161290	Number of level 2 events



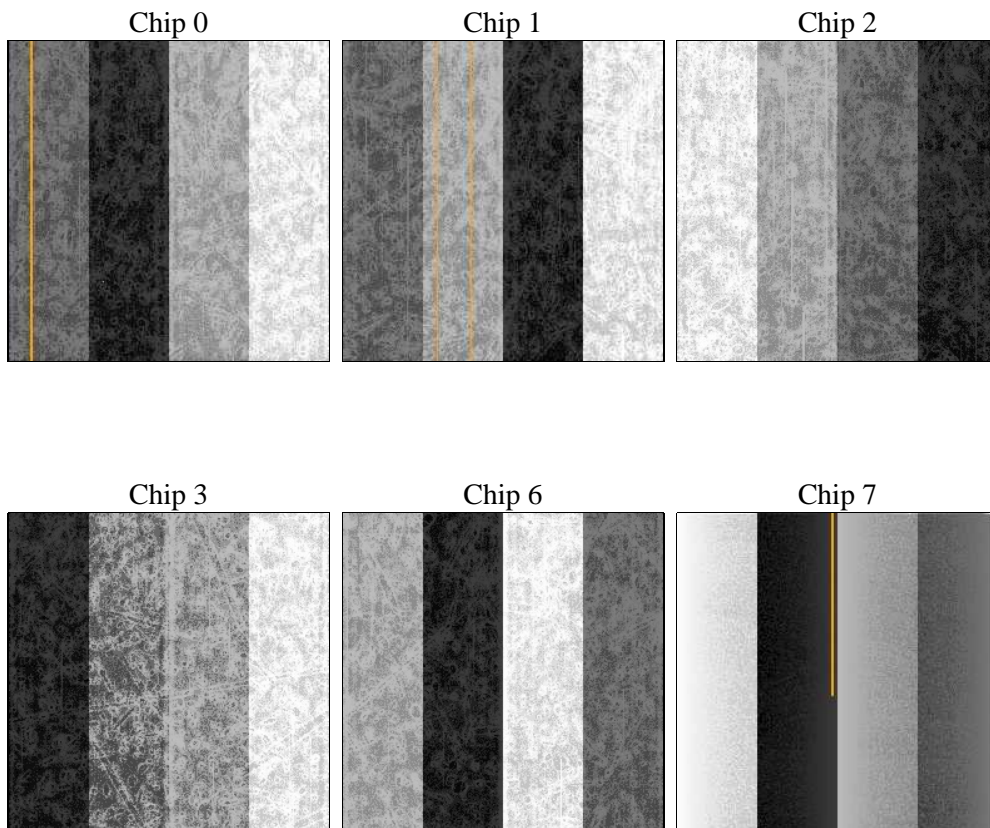
2 OBI

2.1 OBI

2.1.1 Images



2.1.2 Bias



2.1.3 Parameters

obi_num	1	Obi number	sched_exp_time	20000.000000	[s] Scheduled observation exposure time
ascdsver	8.4.5	Processing system revision	ontime	19891.199925959	Sum of GTIs [s]
caldbver	4.4.10	 	ontime0	19891.199925959	Sum of GTIs [s]
date	2012-06-12T14:08:58	Date and time of file creation	ontime1	19891.199925959	Sum of GTIs [s]
revision	2	Processing version of data	ontime2	19891.199925959	Sum of GTIs [s]
			ontime3	19891.199925959	Sum of GTIs [s]
			ontime6	19887.958925664	Sum of GTIs [s]
			ontime7	19891.199925959	Sum of GTIs [s]
			l1events	1048616	Number of level 1 events

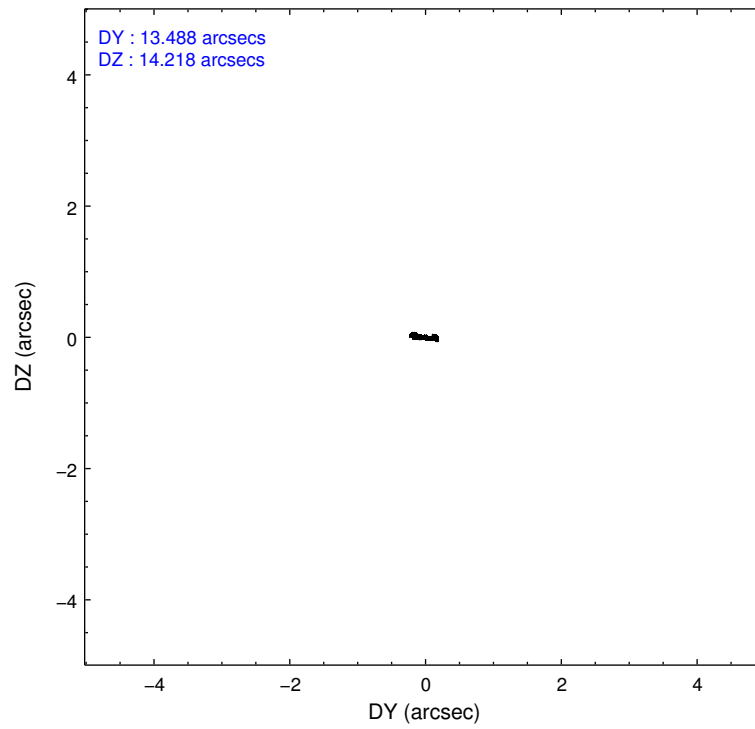
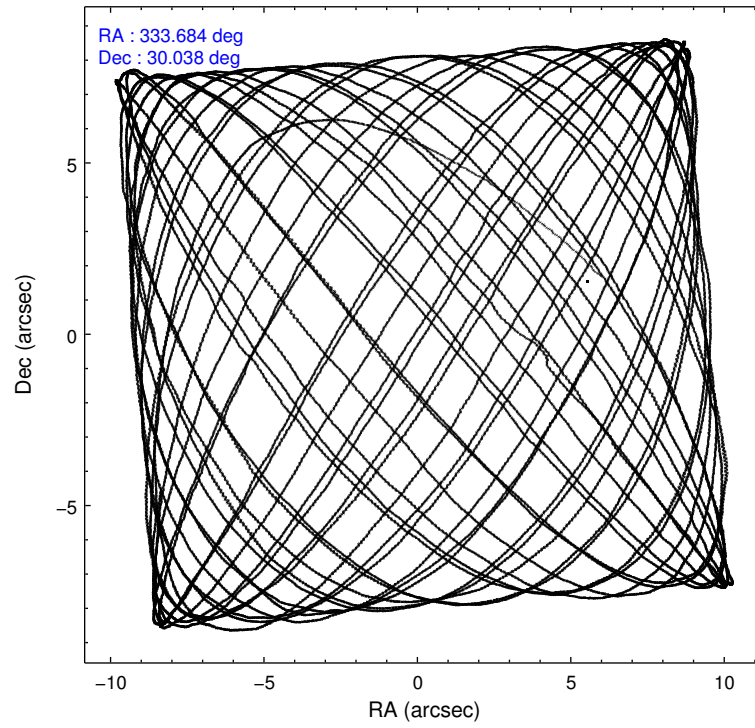
2.1.4 Events

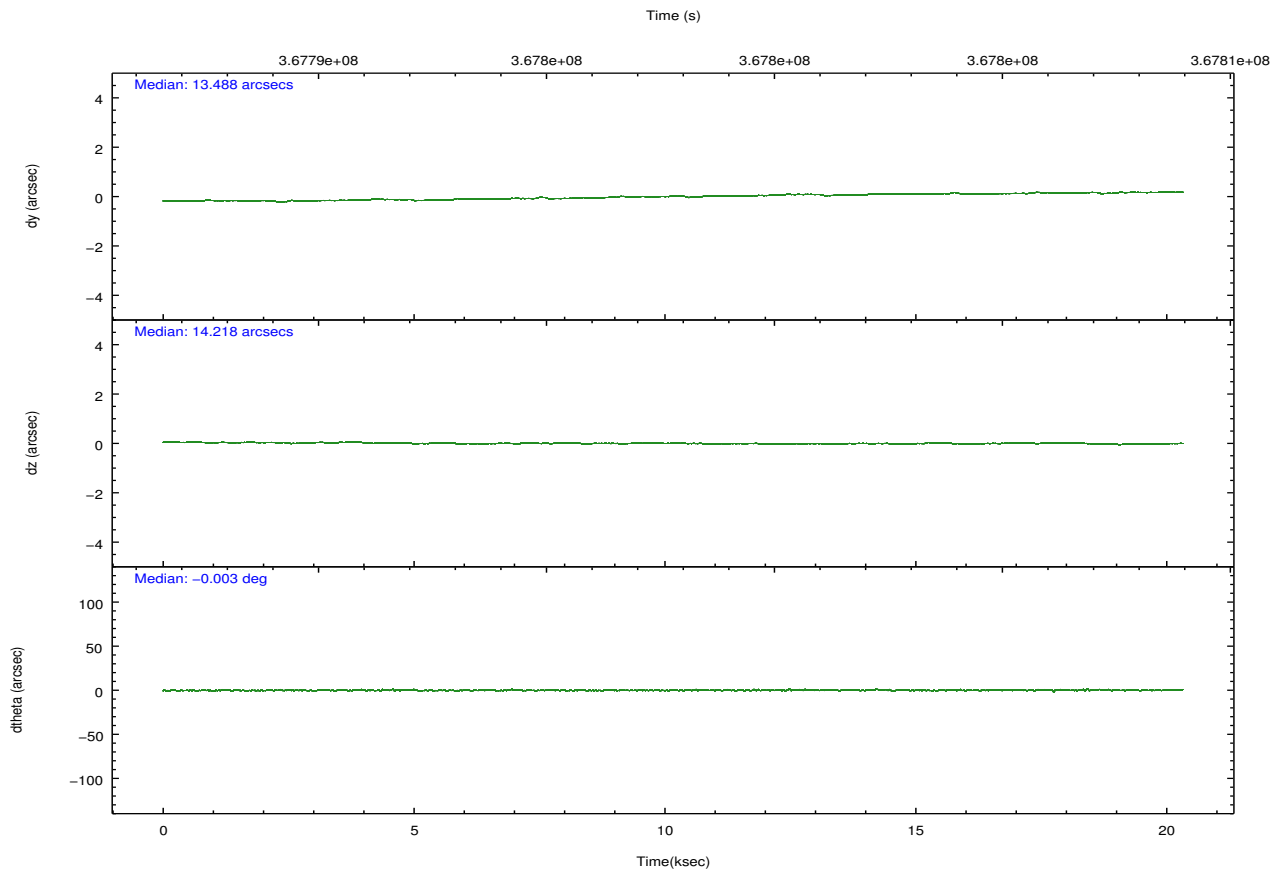
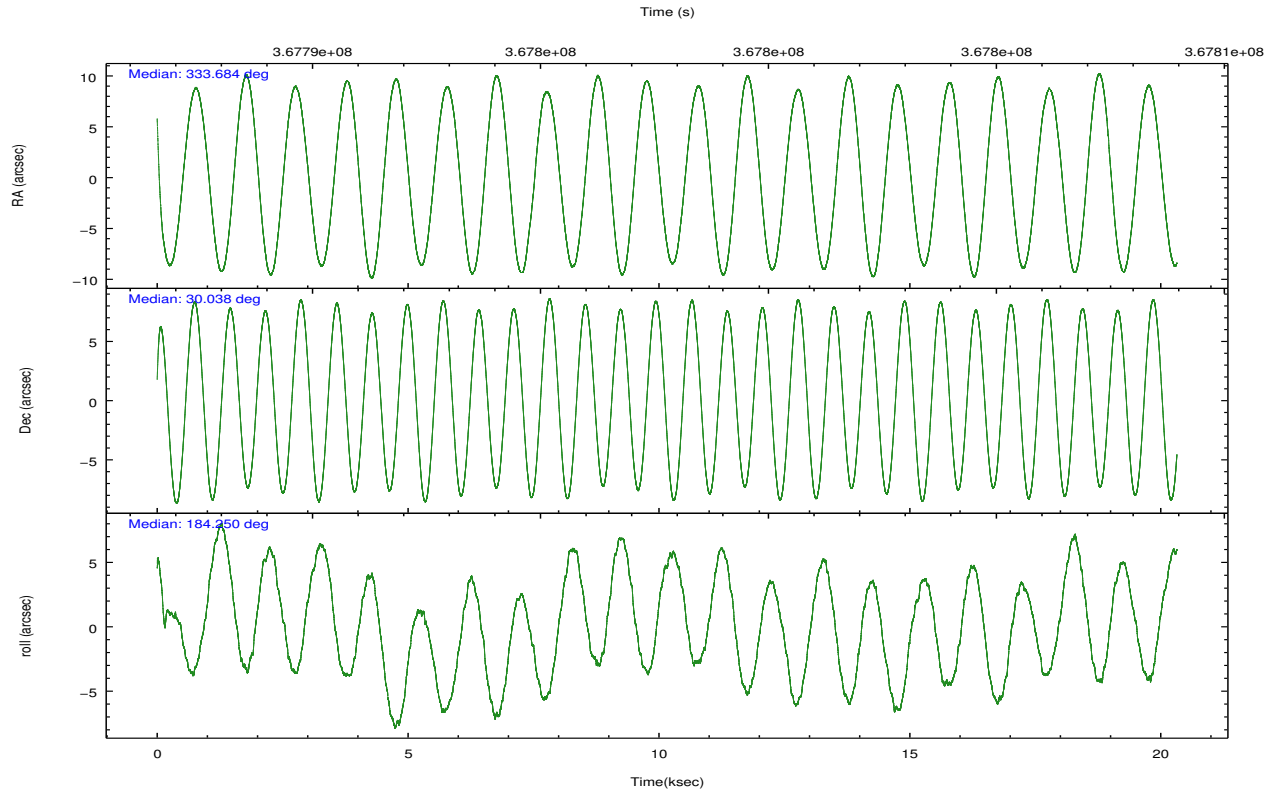
	ccd 0	ccd 1	ccd 2	ccd 3	ccd 6	ccd 7		ccd 0	ccd 1	ccd 2	ccd 3	ccd 6	ccd 7
level 1 events	161676	158560	177227	170895	182161	198097	grade 0 events	6215	6784	6355	5947	6222	8235
rejected events	144004	139191	159927	154364	164008	108405		3%	4%	3%	3%	3%	4%
rejected %	89%	87%	90%	90%	90%	54%	grade 1 events	87	93	108	112	99	272
								0%	0%	0%	0%	0%	0%
							grade 2 events	4218	4548	4231	3529	4071	18192
								2%	2%	2%	2%	2%	9%
							grade 3 events	1929	2049	1746	1900	1959	7955
								1%	1%	0%	1%	1%	4%
							grade 4 events	1838	2055	1823	1746	1886	8136
								1%	1%	1%	1%	1%	4%
							grade 5 events	6185	6714	5648	7180	7282	20814
								3%	4%	3%	4%	3%	10%
							grade 6 events	3476	3937	3149	3413	4016	47187
								2%	2%	1%	1%	2%	23%
							grade 7 events	137728	132380	154167	147068	156626	87306
								85%	83%	86%	86%	85%	44%

2.2 Compared Parameters

Parameter	Planned	Actual	Parameter	Planned	Actual
Instrument	ACIS	ACIS	Obspar format version number	7	7
Detector	ACIS-012367	ACIS-012367	Obspar file type	PREDICTED	ACTUAL
Grating	NONE	NONE	Obspar update status	NONE	UPDATED
Data mode	FAINT	FAINT	CCD I0 on	Y	Y
Observation mode	POINTING	POINTING	CCD I1 on	Y	Y
[deg] Pointing RA	333.710496	333.6842945476632	CCD I2 on	Y	Y
[deg] Pointing Dec	30.053603	30.03801496560288	CCD I3 on	Y	Y
[deg] Pointing Roll	184.038481	184.26029478563	CCD S0 on	N	N
[mm] SIM focus pos	-0.782348	-0.7809083437167272	CCD S1 on	N	N
[mm] SIM defocus	0	0.001439871863259334	CCD S2 on	O2	Y
[mm] SIM translation stage pos	-233.592463	-233.5874344608287	CCD S3 on	O1	Y
[mm] SIM translation stage offset	0	-0.005018542100998502	CCD S4 on	N	N
[s] Observation start time (MET)	367787938.184000	367786807.38762	CCD S5 on	N	N
Observation start date	2009-08-27T19:17:52	2009-08-27T19:00:07	Number of optional ACIS chips dropped	0	0
[s] Observation end time (MET)	367807938.184000	367808493.82621	On-chip summing requested	N	N
Observation end date	2009-08-28T00:51:12	2009-08-28T01:01:33	Subarray requested	NONE	NONE
Read mode	TIMED	TIMED	Alternating exposures requested	N	N
			[s] Primary exposure time	0.000000	3.2

2.3 Aspect



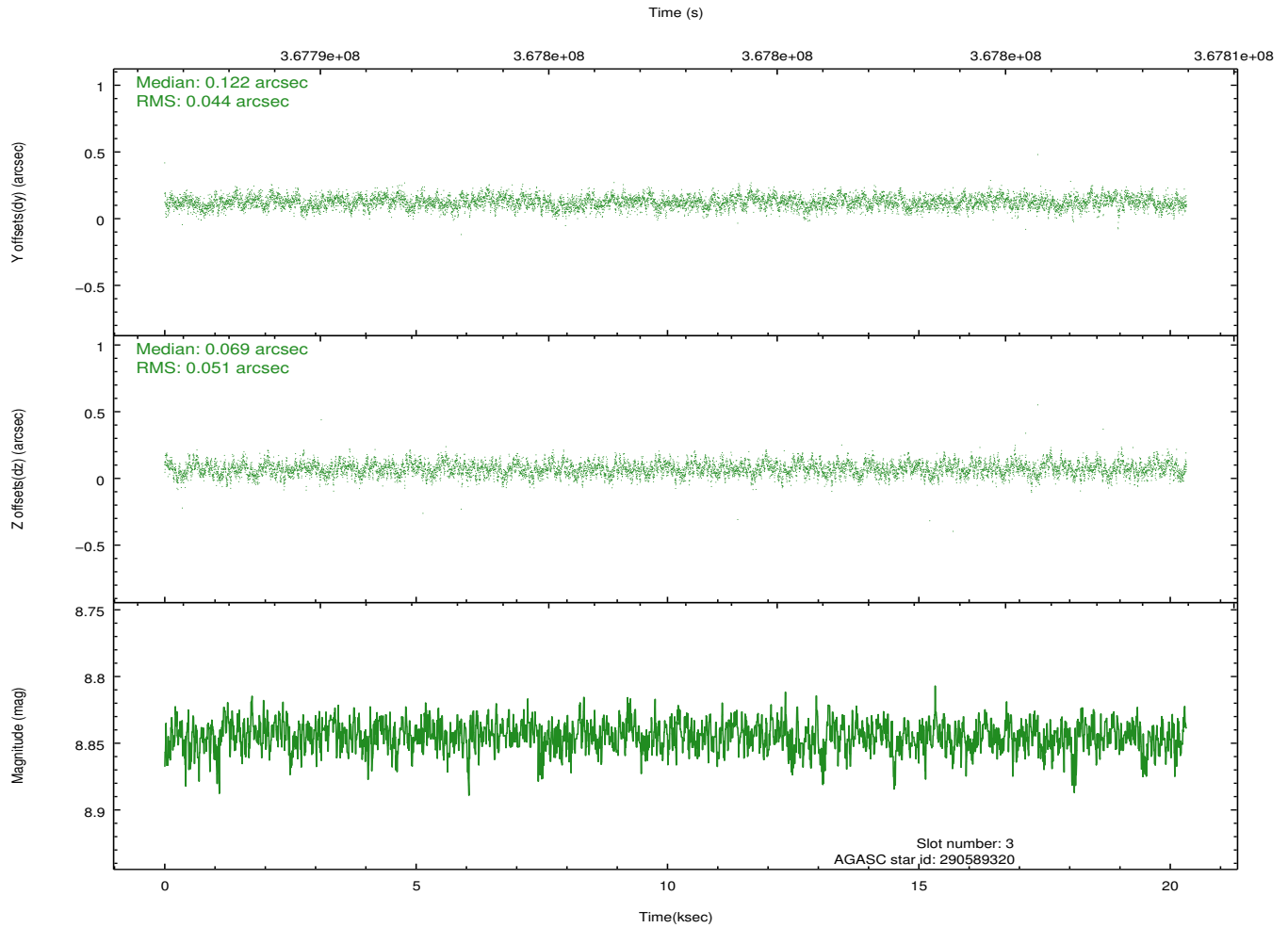
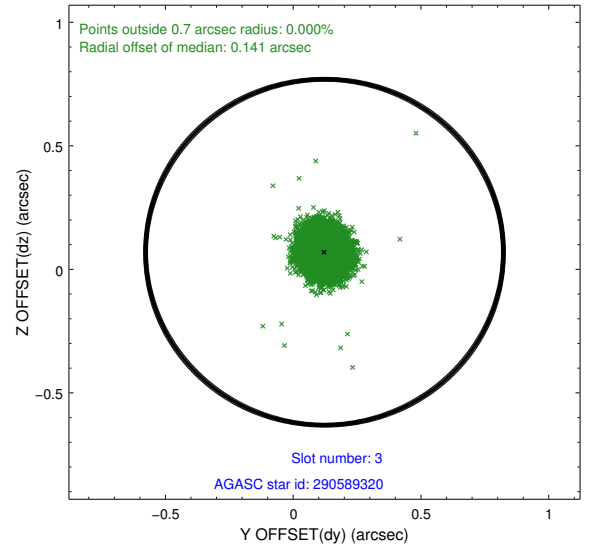
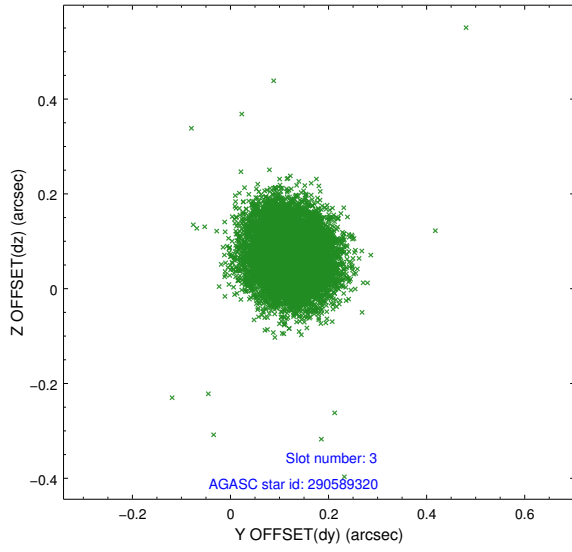


Slot Statistics

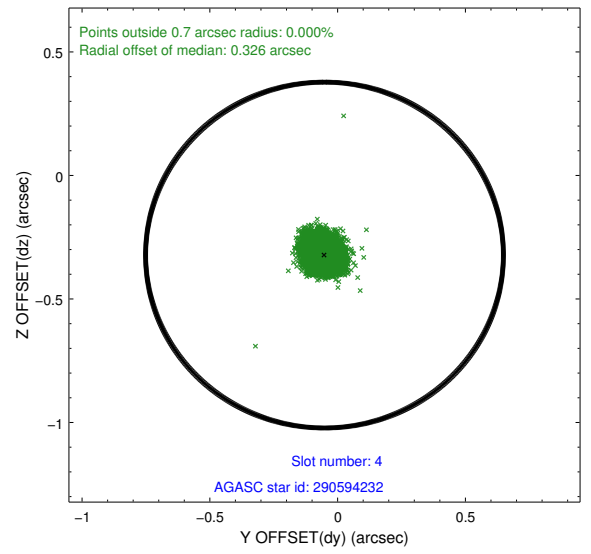
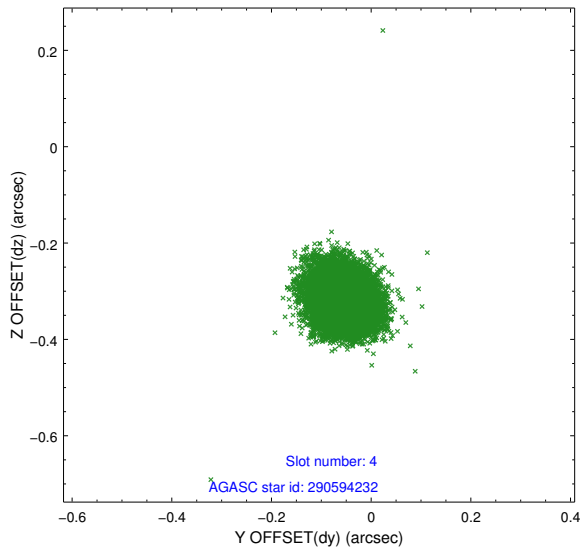
slot	status	id	mag	n_pts	med_dy	med_dz	dr1	dr2	ra	dec	mean_y	mean_z
0	FID	ACIS-I-1	7.01	4957	0.036	0.011	0.006	0.010	0.000000	0.000000	926.08	-837.77
1	FID	ACIS-I-5	7.01	4957	-0.222	0.042	0.006	0.011	0.000000	0.000000	-1822.23	1059.60
2	FID	ACIS-I-6	7.01	4957	0.095	0.018	0.006	0.011	0.000000	0.000000	391.42	1704.33
3	GUIDE	290589320	8.84	9910	0.122	0.069	0.071	0.115	333.863944	29.738775	-398.49	1164.13
4	GUIDE	290594232	7.71	9913	-0.051	-0.322	0.054	0.087	333.892146	29.458283	-417.32	2177.32
5	GUIDE	358230032	8.62	9912	-0.103	0.104	0.074	0.120	333.229879	30.366585	1409.94	-1231.54
6	GUIDE	358232768	7.99	9903	0.112	0.085	0.072	0.116	334.067282	30.047904	-1107.21	96.90
7	GUIDE	358232800	8.71	9905	-0.078	0.063	0.071	0.116	333.321637	30.246388	1157.53	-779.14

2.4 Star Slots

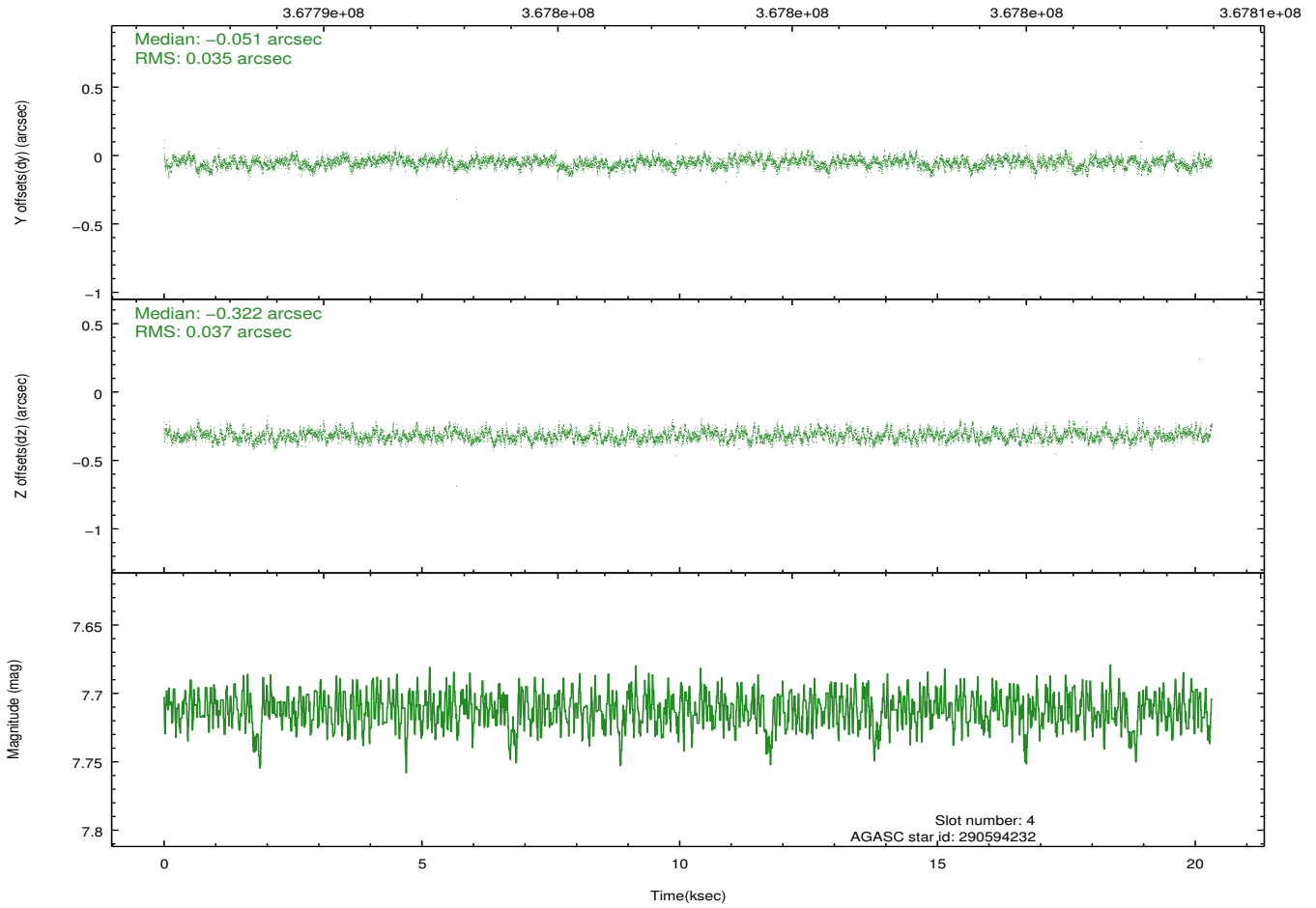
2.4.1 Slot 3



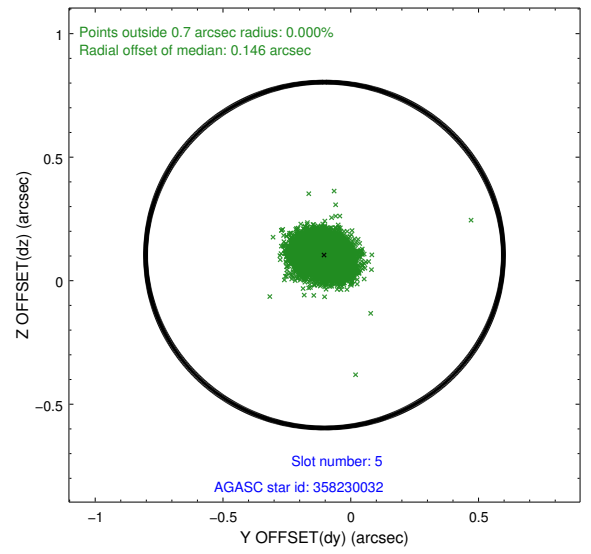
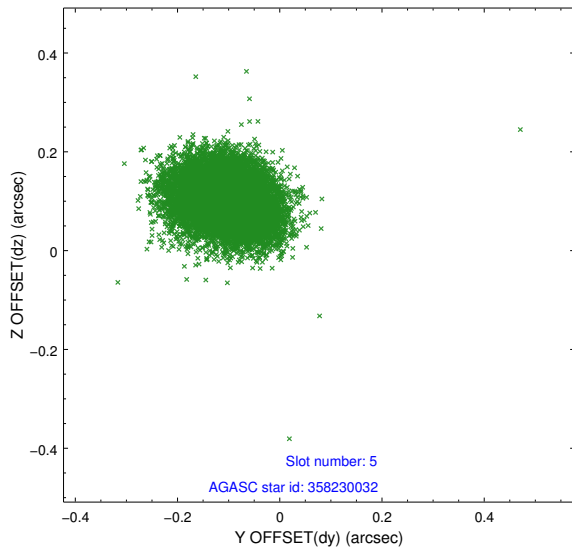
2.4.2 Slot 4



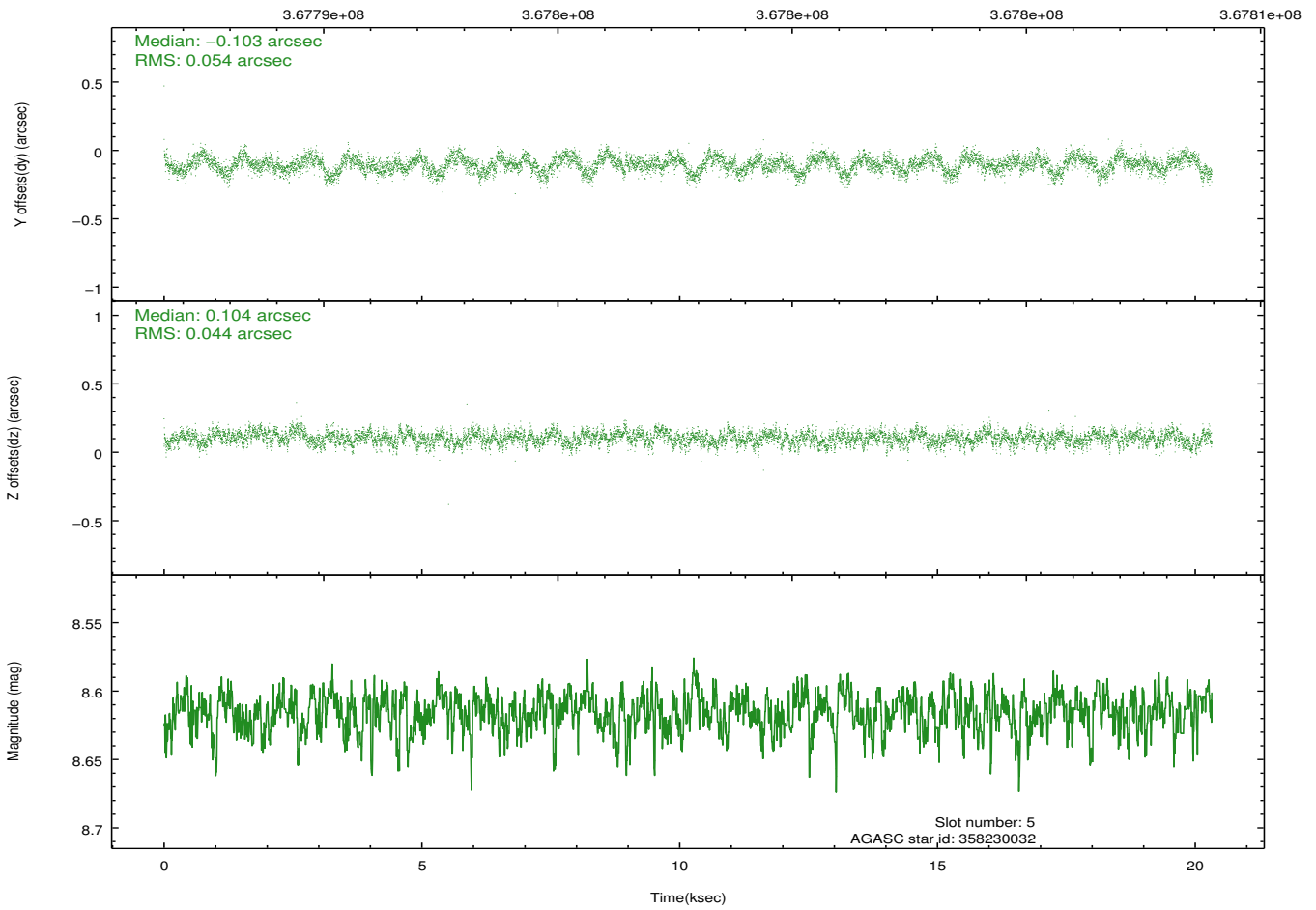
Time (s)



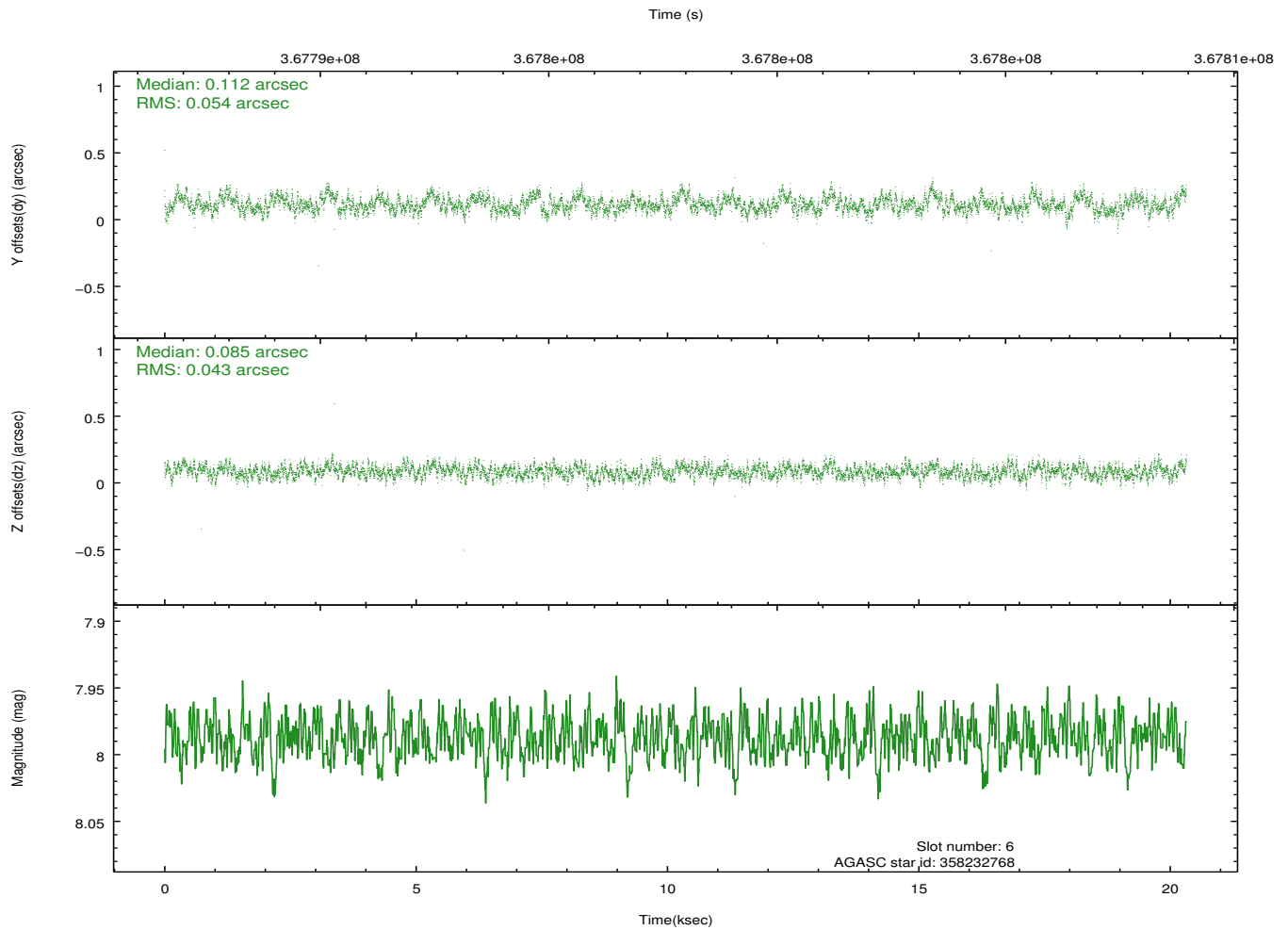
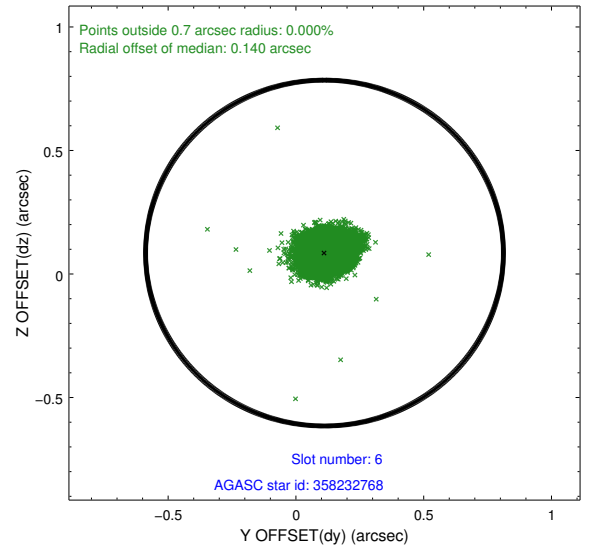
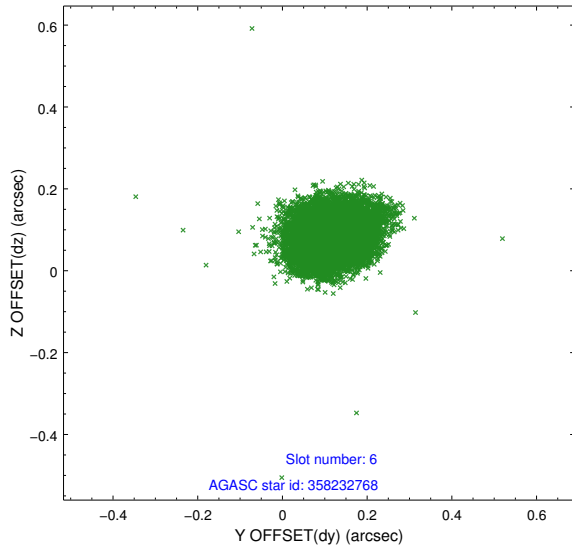
2.4.3 Slot 5



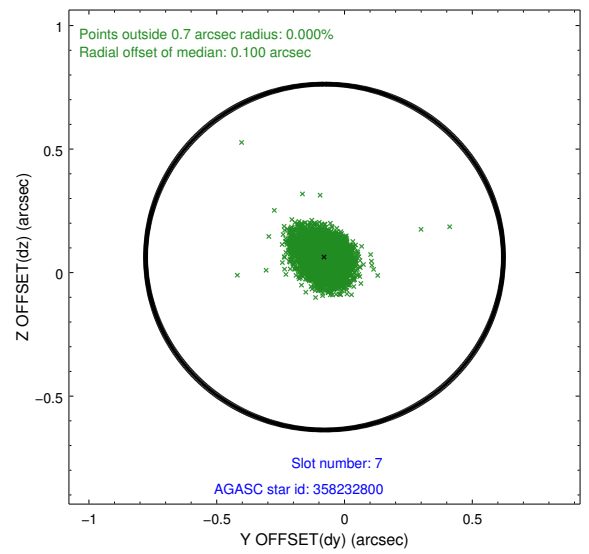
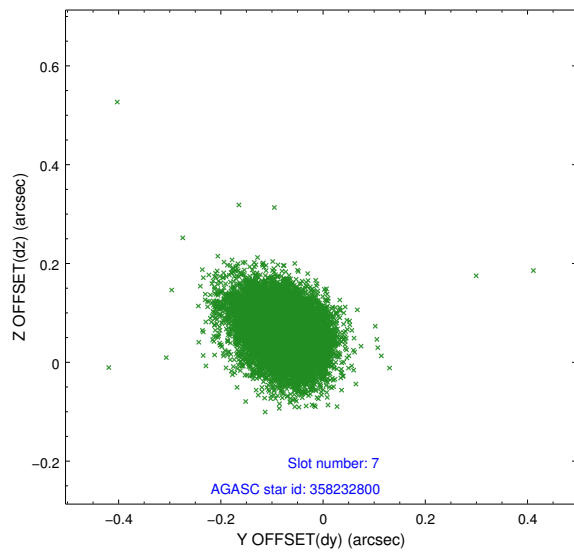
Time (s)



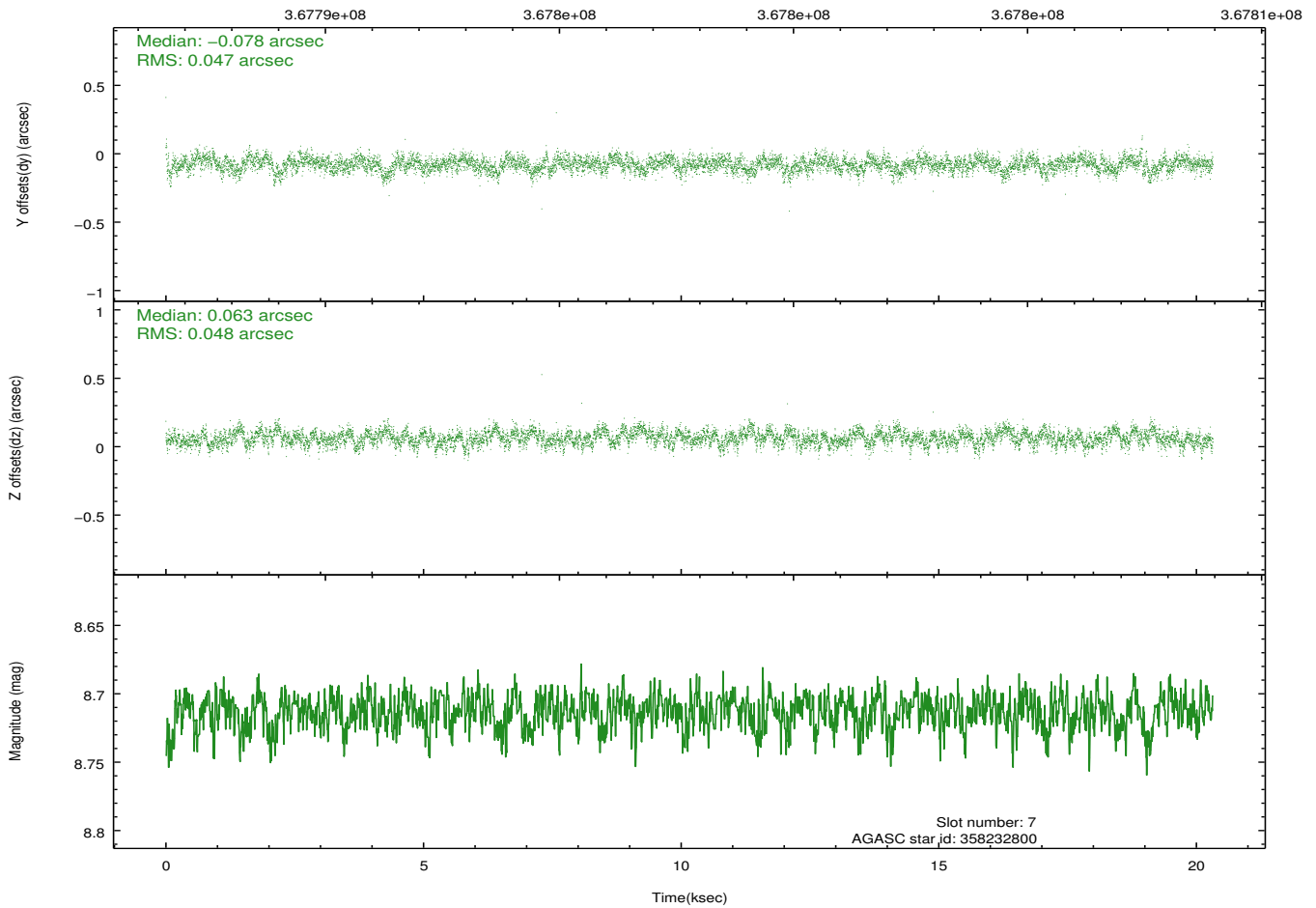
2.4.4 Slot 6



2.4.5 Slot 7

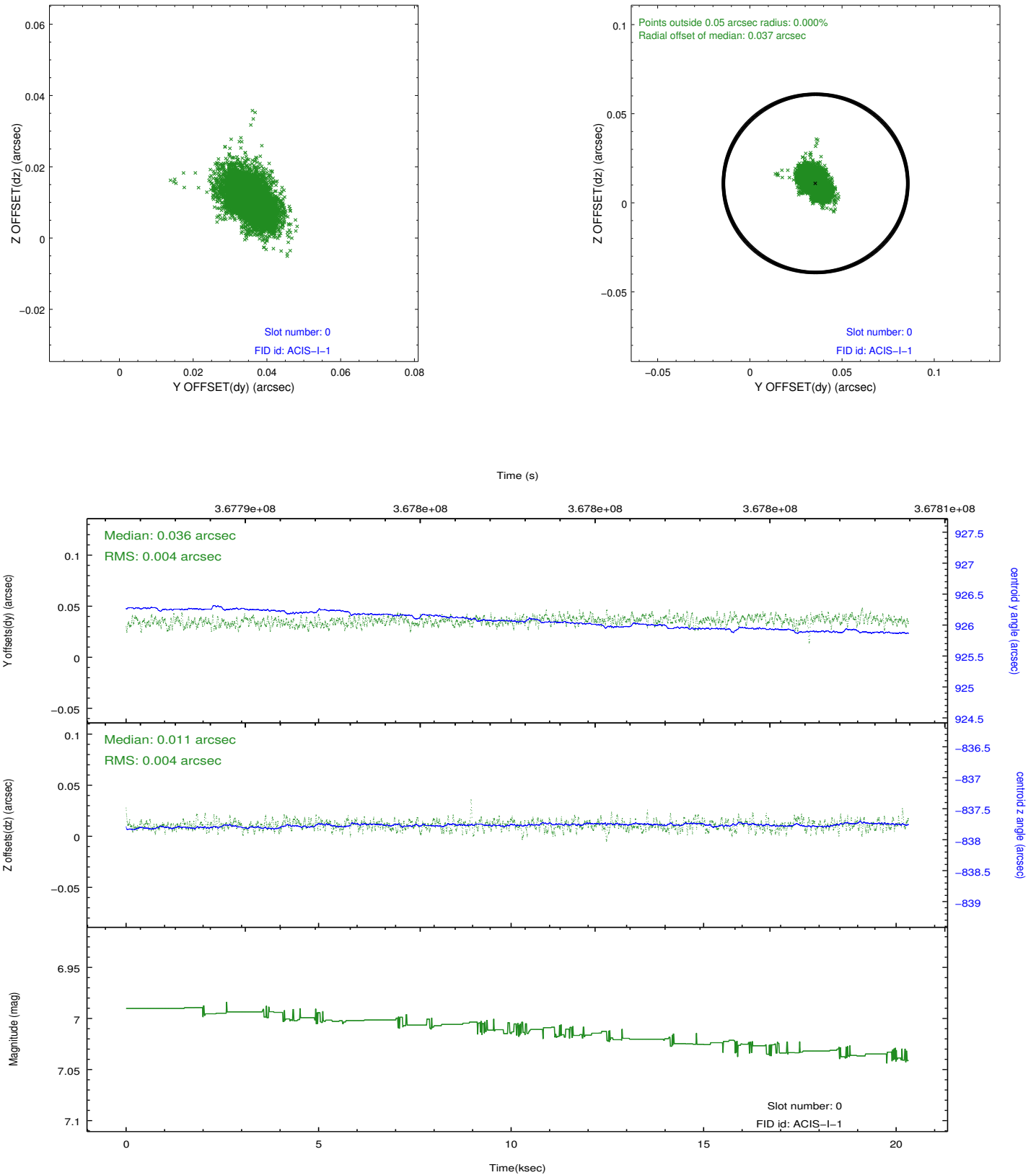


Time (s)

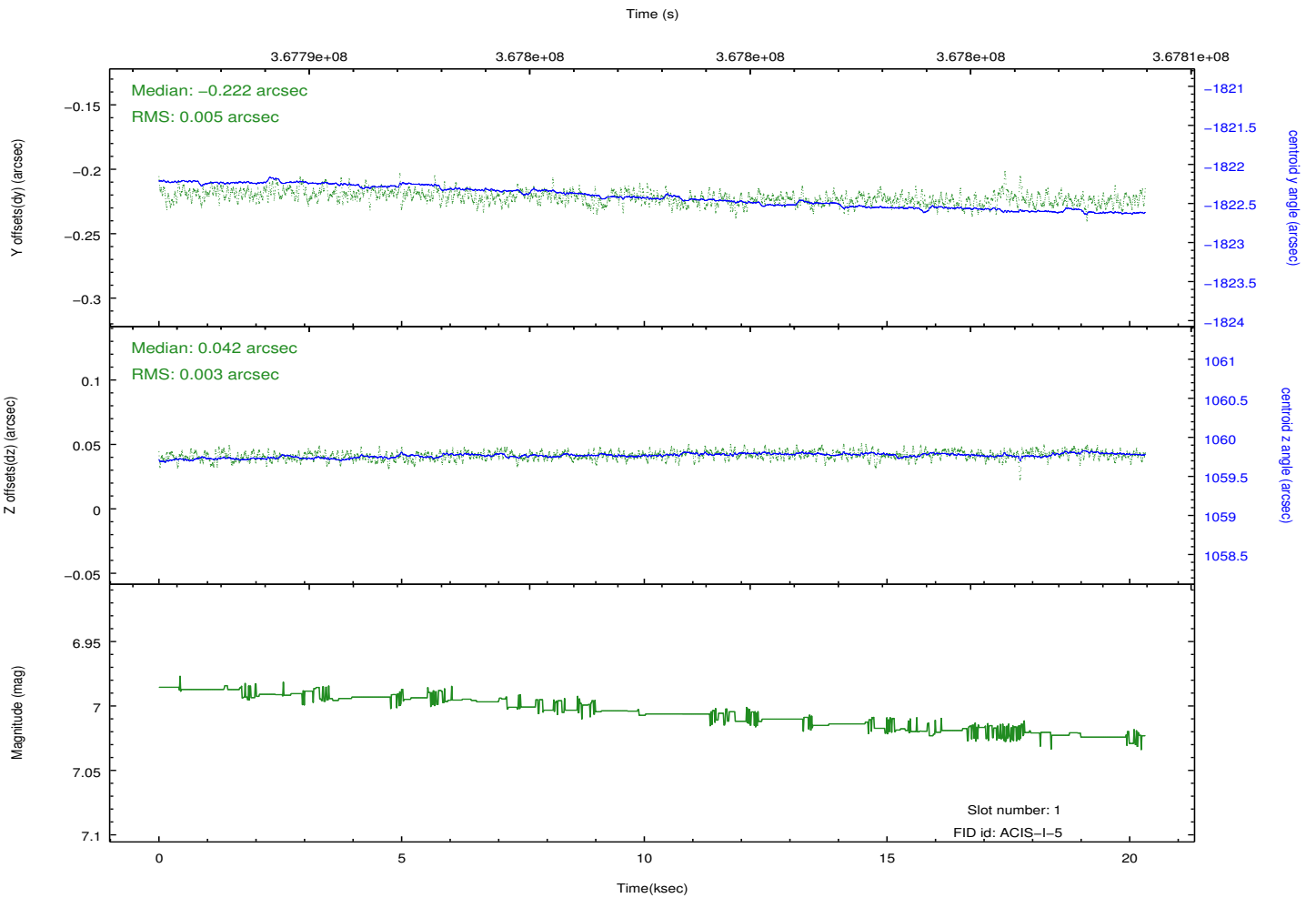
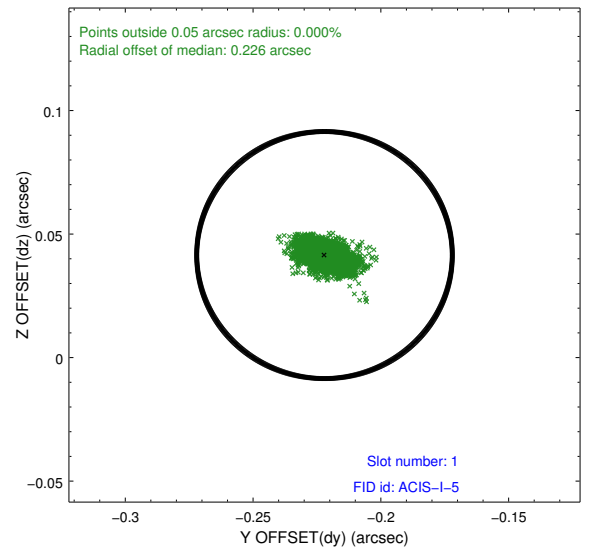
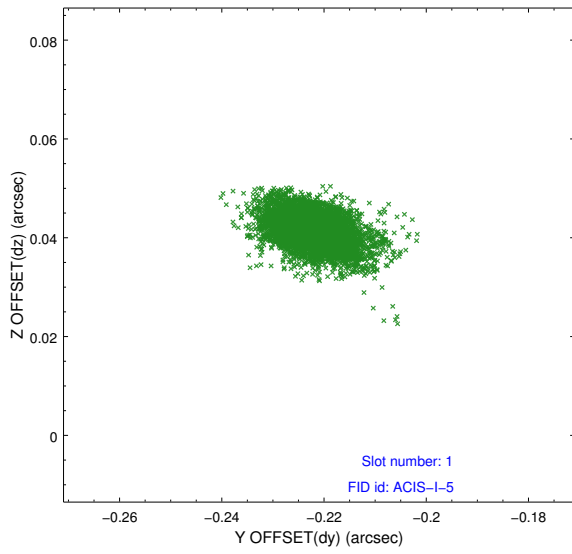


2.5 FID Slots

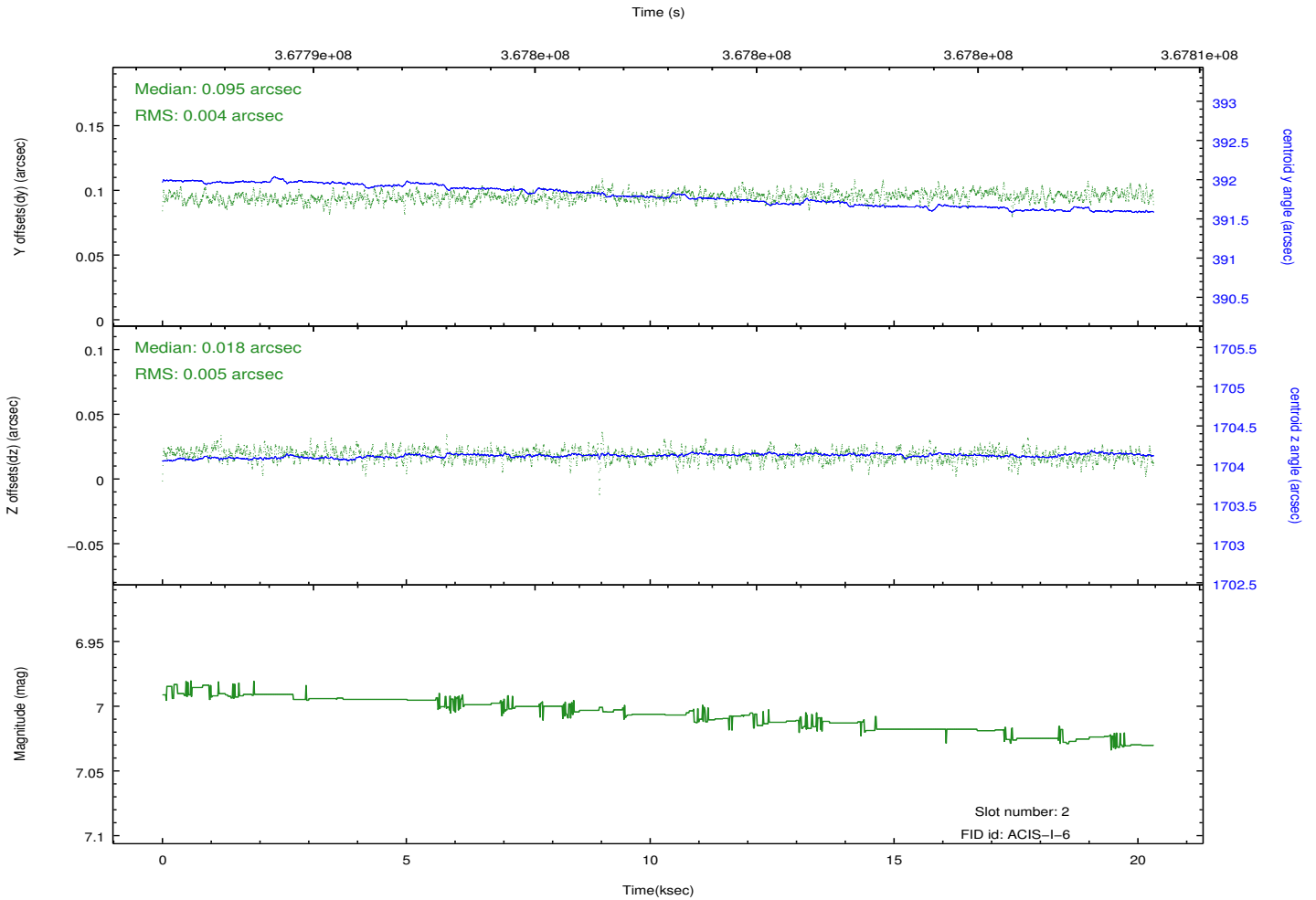
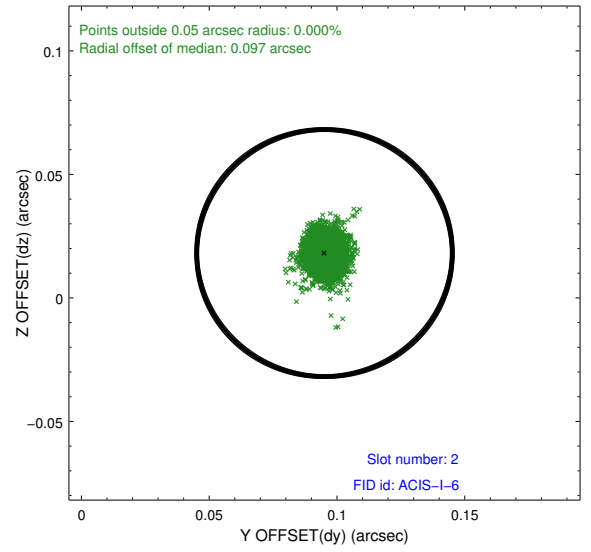
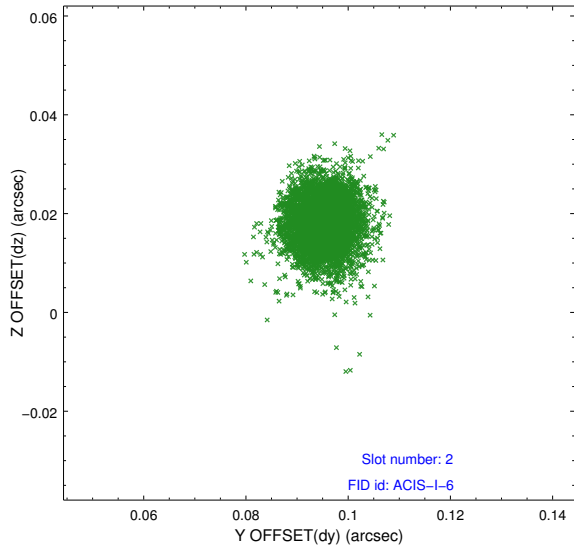
2.5.1 Slot 0



2.5.2 Slot 1



2.5.3 Slot 2



A Summary

A.1 Status

V&V Scientist	Jen Lauer
V&V Date (YYYY-MM-DD)	2012.06.15
V&V Edition	1
V&V Disposition and Status	OK
V&V Charge Time	19.891199925959

A.2 Comments