

V&V Reference Report

L2 ASCDS Version : 8.4.5

Observation 118 - L2 Version 4
Chandra X-Ray Center

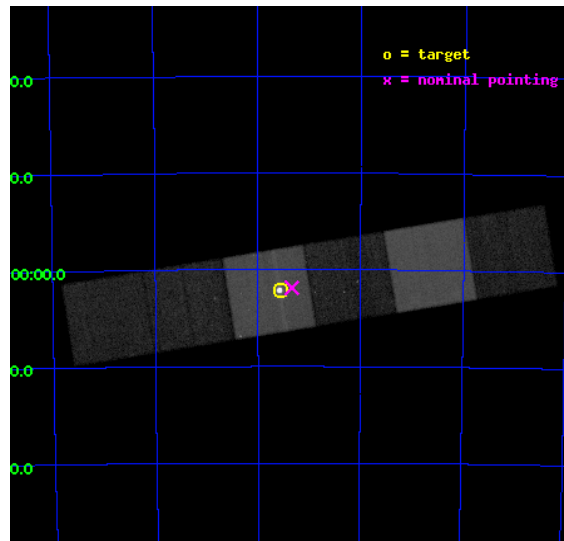
L2 Processing Date : Aug 29 2012

Contents

1	Front	2
2	OBI	3
2.1	OBI	3
2.1.1	Images	3
2.1.2	Bias	3
2.1.3	Parameters	4
2.1.4	Events	4
2.2	Compared Parameters	5
2.3	Aspect	6
2.4	Star Slots	9
2.4.1	Slot 3	9
2.4.2	Slot 4	10
2.4.3	Slot 5	11
2.4.4	Slot 6	12
2.4.5	Slot 7	13
2.5	FID Slots	14
2.5.1	Slot 0	14
2.5.2	Slot 1	15
2.5.3	Slot 2	16
A	Summary	17
A.1	Status	17
A.2	Comments	17

1 Front

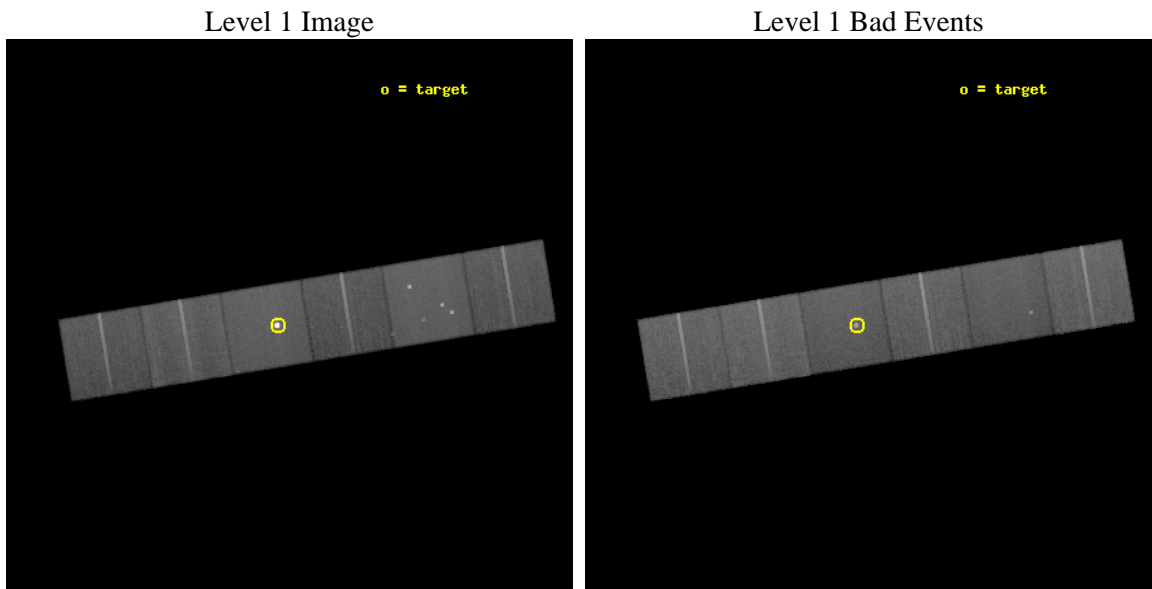
seq_num	500005	Sequence number
obs_id	118	Observation id
title	ACIS OBSERVATIONS OF EJECTA DOMINATED MAGELLANIC CLOUD SNR'S	Prop
observer	DR STEPHEN HOLT	Principal investigator
object	0519-69.0	Source name
dtcycle	0	
cycle	P	events from which exps? Prim/Second/Both
ra_targ	79.891667	Observer's specified target RA [deg]
dec_targ	-69.036389	Observer's specified target Dec [deg]
ra_nom	79.834654846995	Nominal RA [deg]
dec_nom	-69.031165801812	Nominal Dec [deg]
roll_nom	170.66410128112	Nominal Roll [deg]
revision	4	Processing version of data
ontime	39692.800036952	Sum of GTIs [s]
livetime	39190.185902749	Livetime [s]
ontime4	39689.559076712	Sum of GTIs [s]
ontime5	39692.800036952	Sum of GTIs [s]
ontime6	39692.800036952	Sum of GTIs [s]
ontime7	39692.800036952	Sum of GTIs [s]
ontime8	39692.800036952	Sum of GTIs [s]
ontime9	39692.800036952	Sum of GTIs [s]
l2events	599159	Number of level 2 events



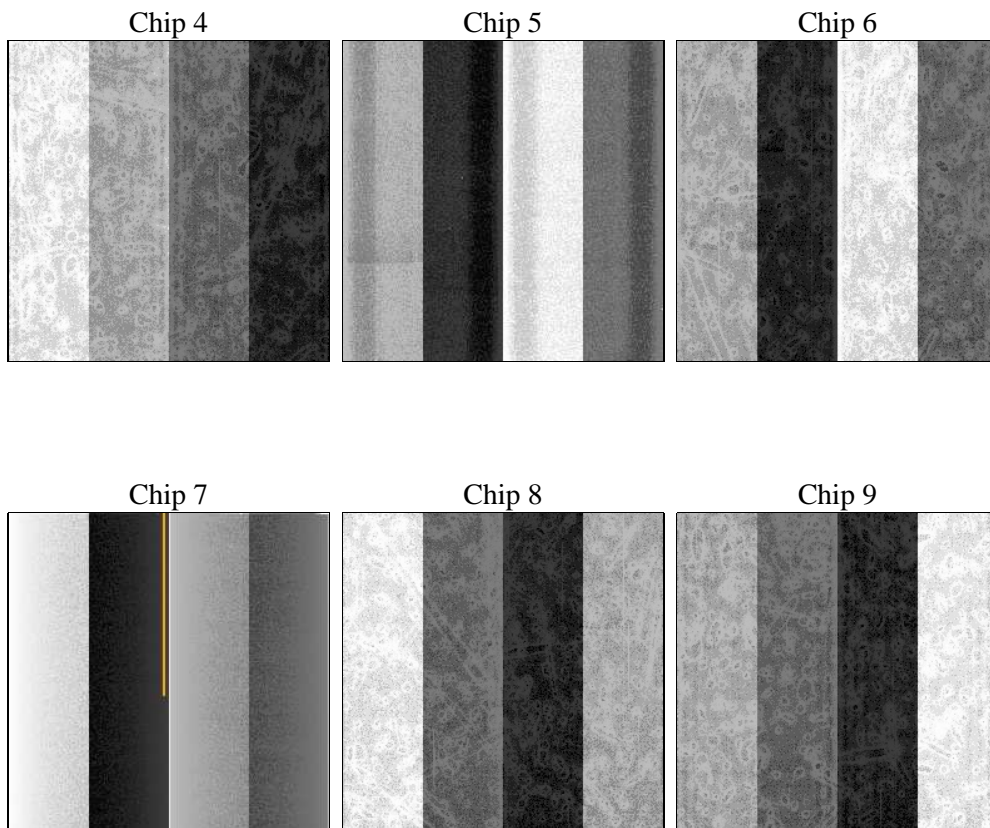
2 OBI

2.1 OBI

2.1.1 Images



2.1.2 Bias



2.1.3 Parameters

obi_num	0	Obi number	sched_exp_time	39540.000000	[s] Scheduled observation exposure time
ascdsver	8.4.5	Processing system revision	ontime	39692.800036952	Sum of GTIs [s]
caldbver	4.5.1.1	 	ontime4	39689.559076712	Sum of GTIs [s]
date	2012-08-29T08:32:36	Date and time of file creation	ontime5	39692.800036952	Sum of GTIs [s]
revision	4	Processing version of data	ontime6	39692.800036952	Sum of GTIs [s]
			ontime7	39692.800036952	Sum of GTIs [s]
			ontime8	39692.800036952	Sum of GTIs [s]
			ontime9	39692.800036952	Sum of GTIs [s]
			l1events	1994830	Number of level 1 events

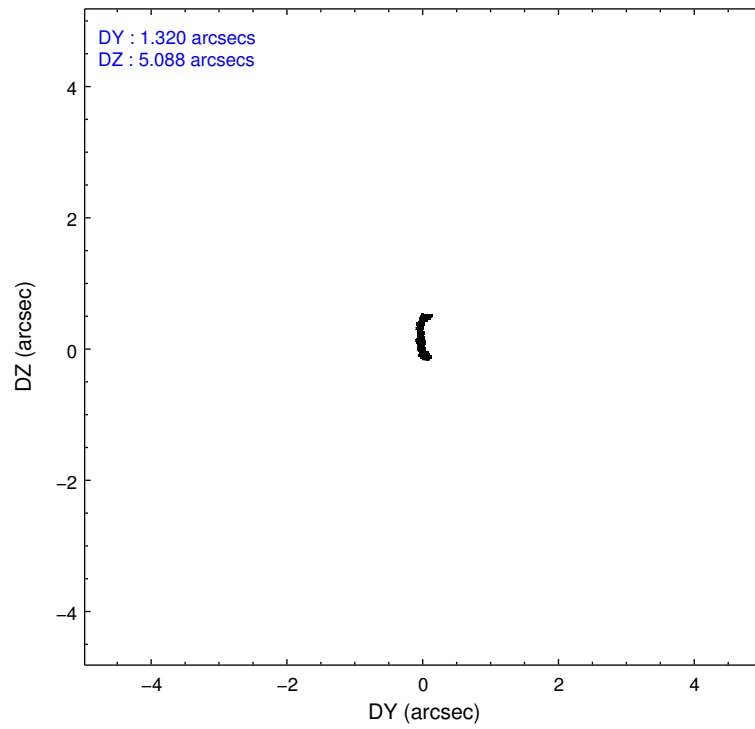
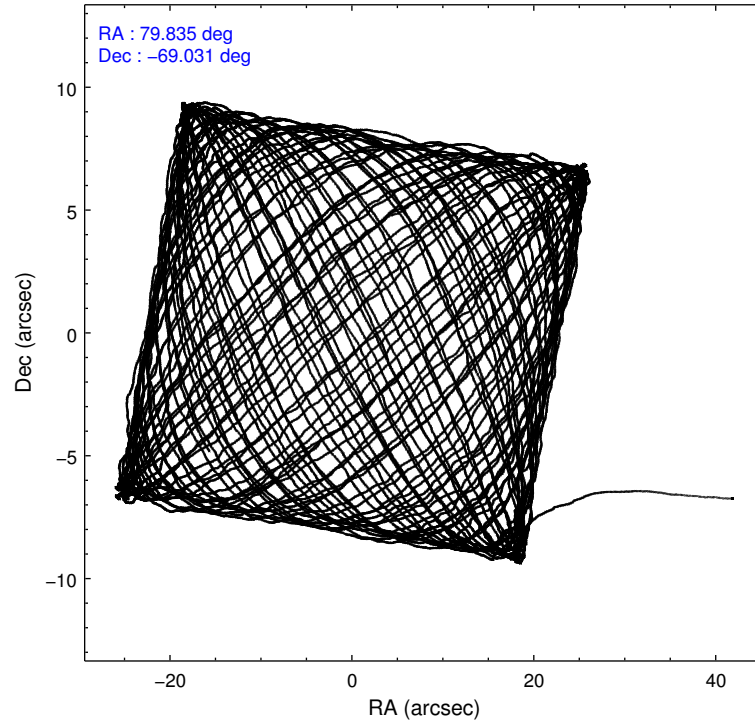
2.1.4 Events

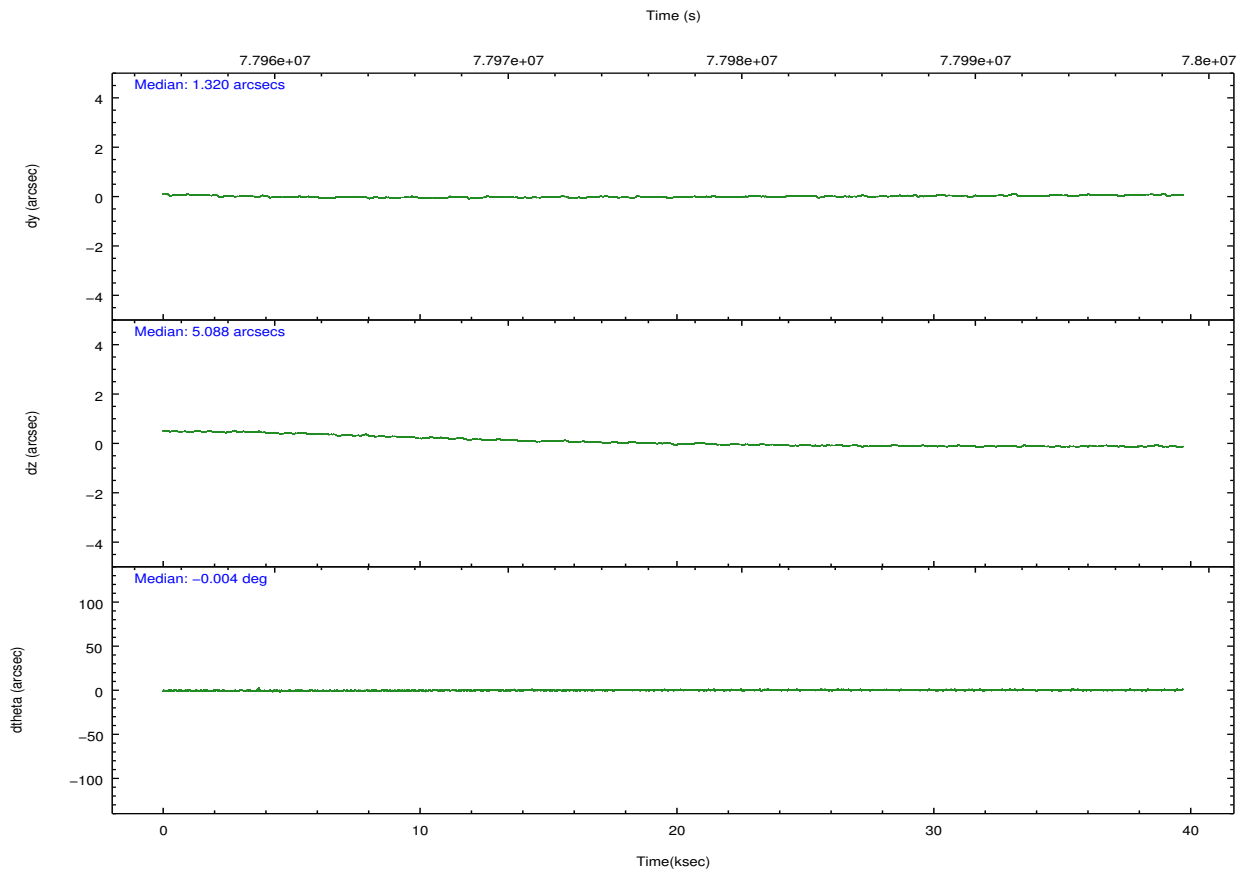
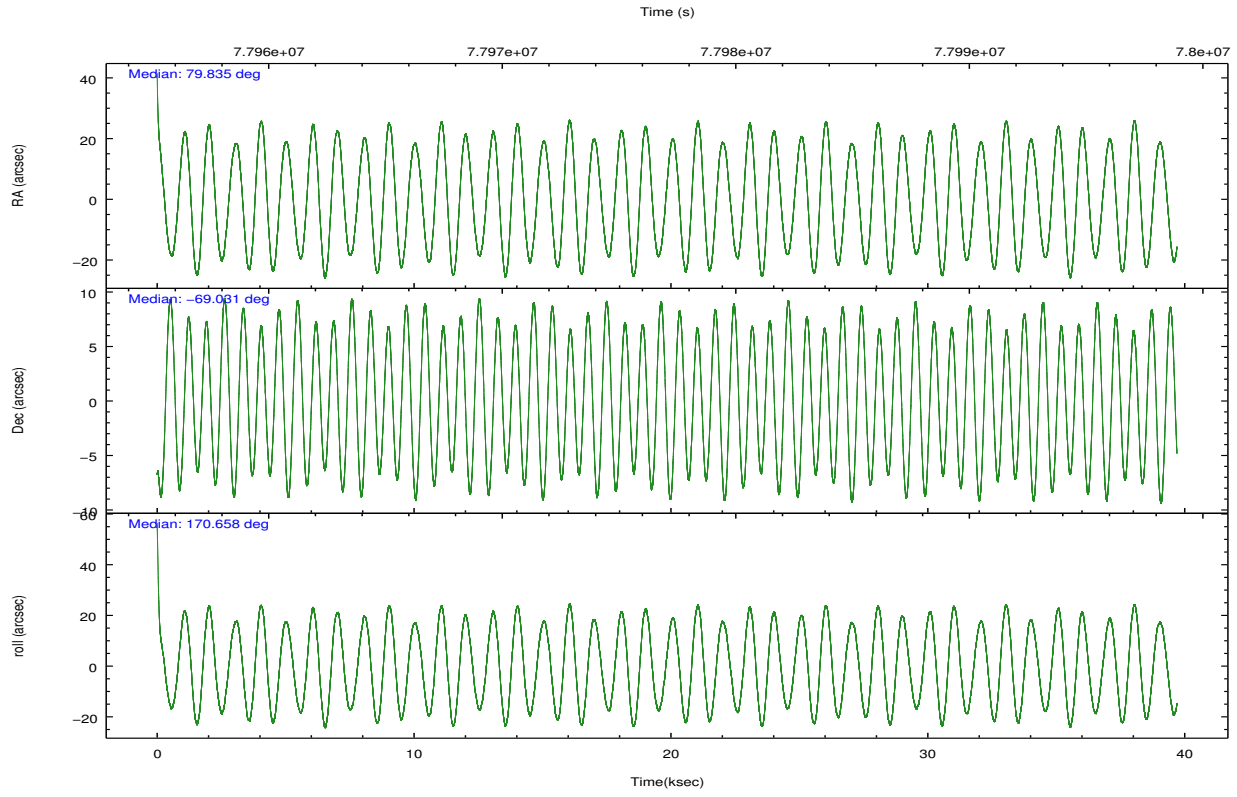
	ccd 4	ccd 5	ccd 6	ccd 7	ccd 8	ccd 9		ccd 4	ccd 5	ccd 6	ccd 7	ccd 8	ccd 9
level 1 events	283336	352928	255230	532616	320054	250666	grade 0 events	14315	31584	14808	89438	22267	13965
rejected events	252527	181576	224385	184623	257603	220837		5%	8%	5%	16%	6%	5%
rejected %	89%	51%	87%	34%	80%	88%	grade 1 events	156	435	143	1923	189	123
								0%	0%	0%	0%	0%	0%
							grade 2 events	6724	49101	5515	85338	13219	5602
								2%	13%	2%	16%	4%	2%
							grade 3 events	2787	7512	2932	39151	6507	2830
								0%	2%	1%	7%	2%	1%
							grade 4 events	2722	7080	2877	38598	6057	2625
								0%	2%	1%	7%	1%	1%
							grade 5 events	8121	25704	9603	32882	12402	9842
								2%	7%	3%	6%	3%	3%
							grade 6 events	4704	79124	5235	98683	15639	5336
								1%	22%	2%	18%	4%	2%
							grade 7 events	243807	152388	214117	146603	243774	210343
								86%	43%	83%	27%	76%	83%

2.2 Compared Parameters

Parameter	Planned	Actual	Parameter	Planned	Actual
Instrument	ACIS	ACIS	Obspar format version number	7	7
Detector	ACIS-456789	ACIS-456789	Obspar file type	PREDICTED	ACTUAL
Grating	NONE	NONE	Obspar update status	NONE	UPDATED
Data mode	FAINT	FAINT	Number of optional ACIS chips dropped	0	0
Observation mode	POINTING	POINTING	On-chip summing requested	N	N
[deg] Pointing RA	79.906185	79.83465484699497	Subarray requested	NONE	NONE
[deg] Pointing Dec	-69.021365	-69.03116580181245	Alternating exposures requested	N	N
[deg] Pointing Roll	170.574267	170.6641012811175	[s] Primary exposure time	0.000000	3.2
[mm] SIM focus pos	-0.684267	-0.6828225247311905			
[mm] SIM defocus	0	0.001444936568705701			
[mm] SIM translation stage pos	-190.132523	-190.1400660498719			
[mm] SIM translation stage offset	0	0.00754346686406393			
[s] Observation start time (MET)	77957365.184000	77955952.783749			
Observation start date	2000-06-21T06:48:21	2000-06-21T06:25:52			
[s] Observation end time (MET)	77996905.184000	77997077.835265			
Observation end date	2000-06-21T17:47:21	2000-06-21T17:51:17			
Read mode	TIMED	TIMED			

2.3 Aspect



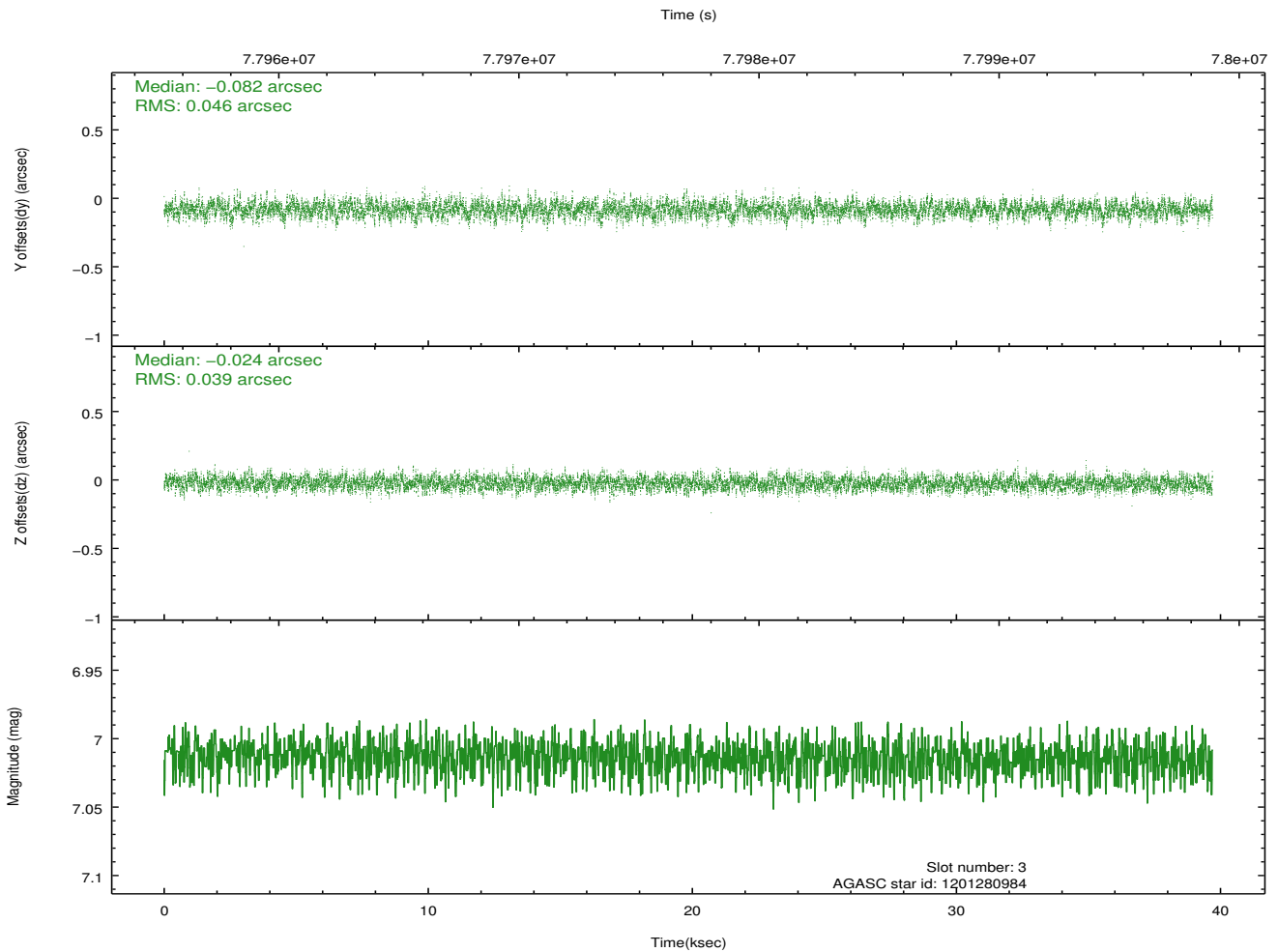
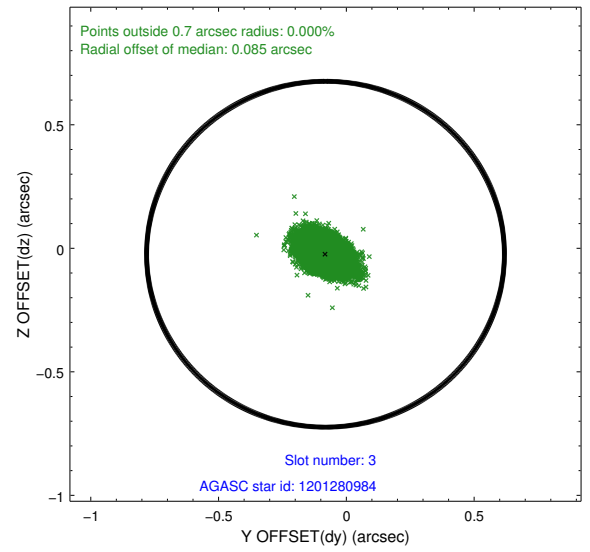
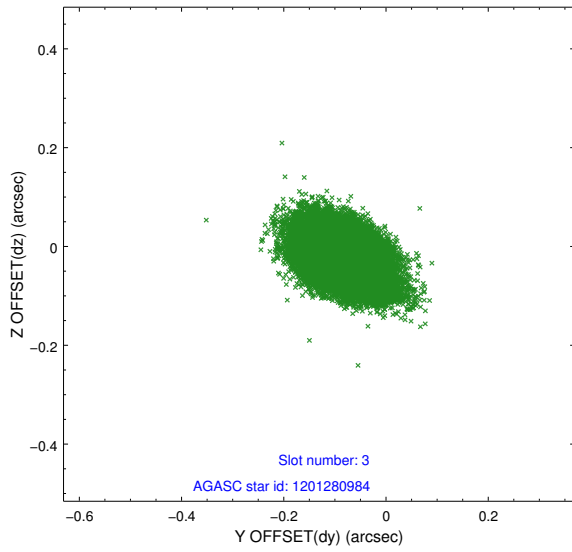


Slot Statistics

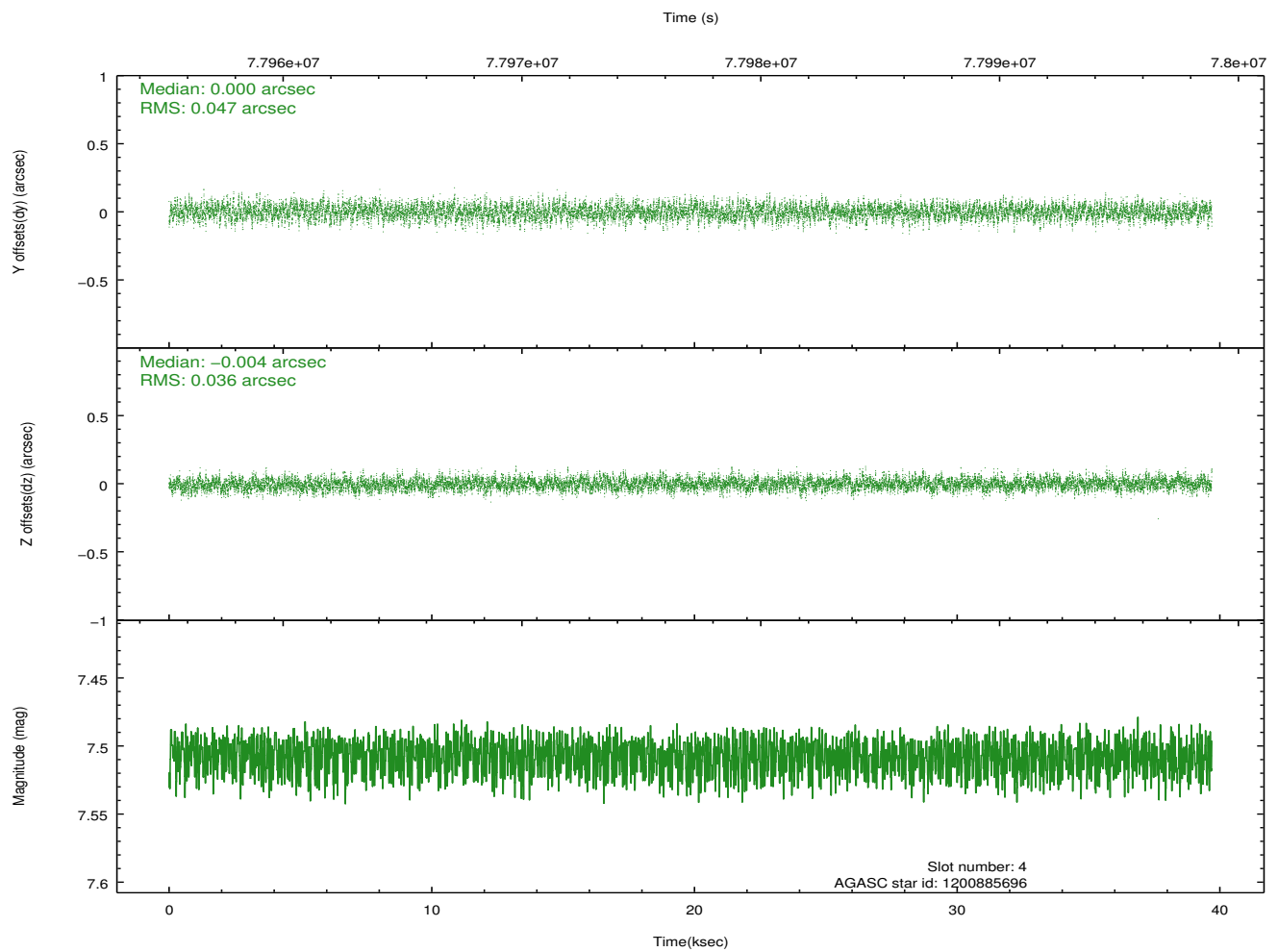
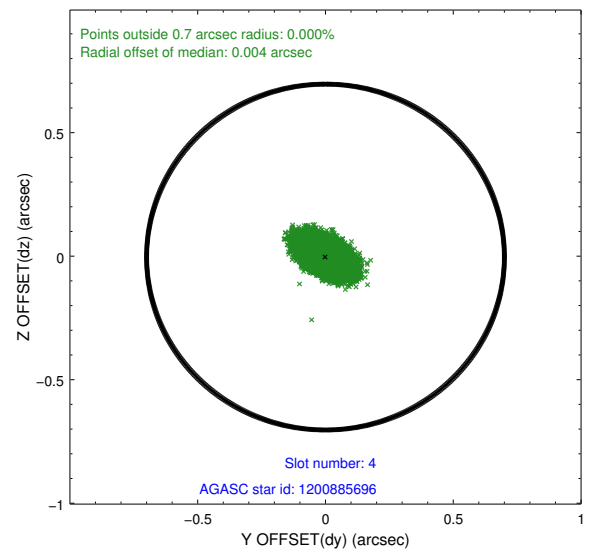
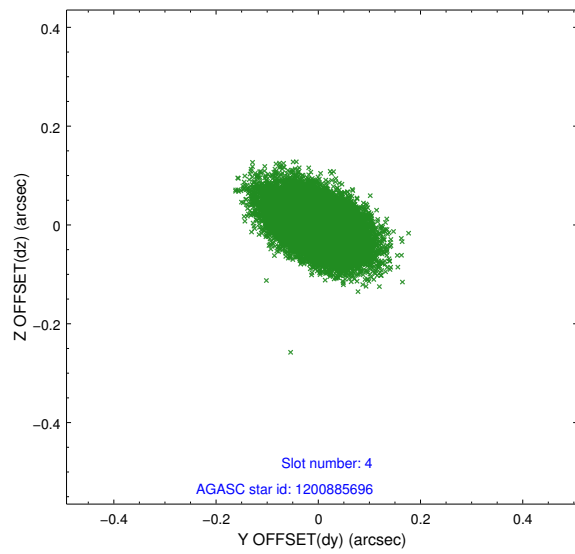
slot	status	id	mag	n_pts	med_dy	med_dz	dr1	dr2	ra	dec	mean_y	mean_z
0	FID	ACIS-S-2	7.11	9683	-0.037	-0.000	0.008	0.013	0.000000	0.000000	-753.95	-1726.28
1	FID	ACIS-S-4	7.21	9682	-0.000	0.018	0.006	0.010	0.000000	0.000000	2159.35	182.21
2	FID	ACIS-S-5	7.23	9682	0.006	-0.009	0.008	0.013	0.000000	0.000000	-1806.73	175.86
3	GUIDE	1201280984	7.01	19361	-0.082	-0.024	0.063	0.106	77.867422	-69.546090	2213.70	2326.63
4	GUIDE	1200885696	7.51	19366	0.000	-0.004	0.062	0.105	79.398028	-68.593130	911.53	-1407.79
5	GUIDE	1201409312	9.25	19358	0.046	0.012	0.085	0.143	80.915231	-69.503059	-1540.03	1513.25
6	GUIDE	1200886248	8.41	19360	0.001	0.022	0.079	0.129	79.513576	-68.465750	839.79	-1885.67
7	GUIDE	1201411288	9.27	19360	0.035	-0.008	0.102	0.171	81.410076	-69.595403	-2203.79	1752.83

2.4 Star Slots

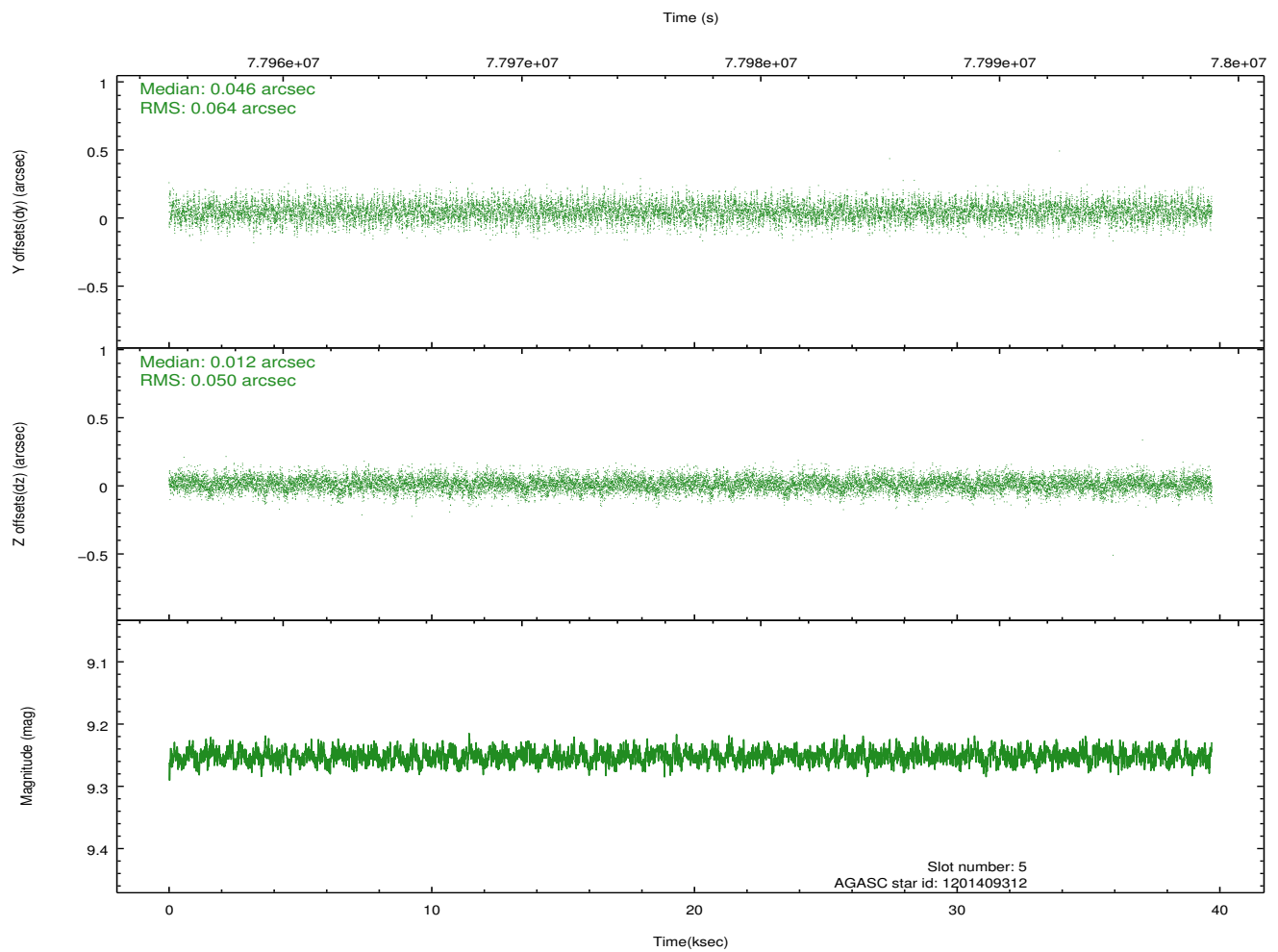
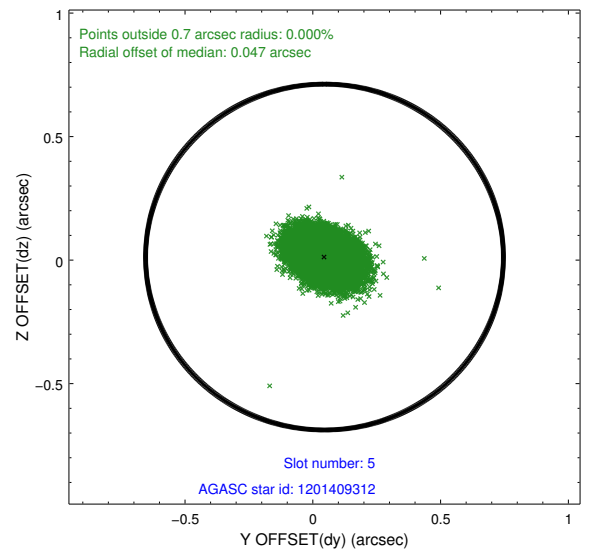
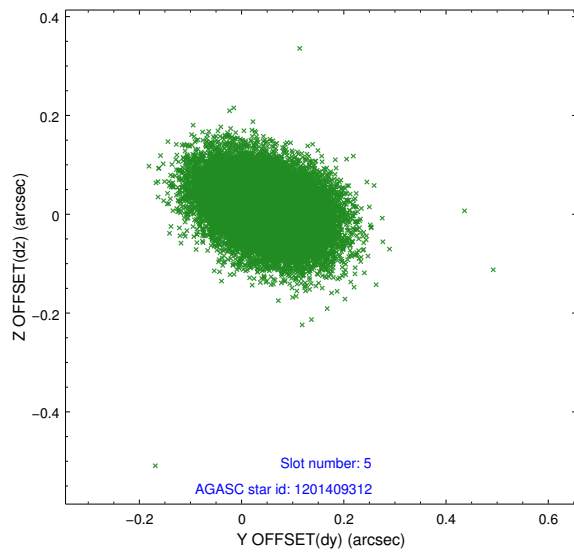
2.4.1 Slot 3



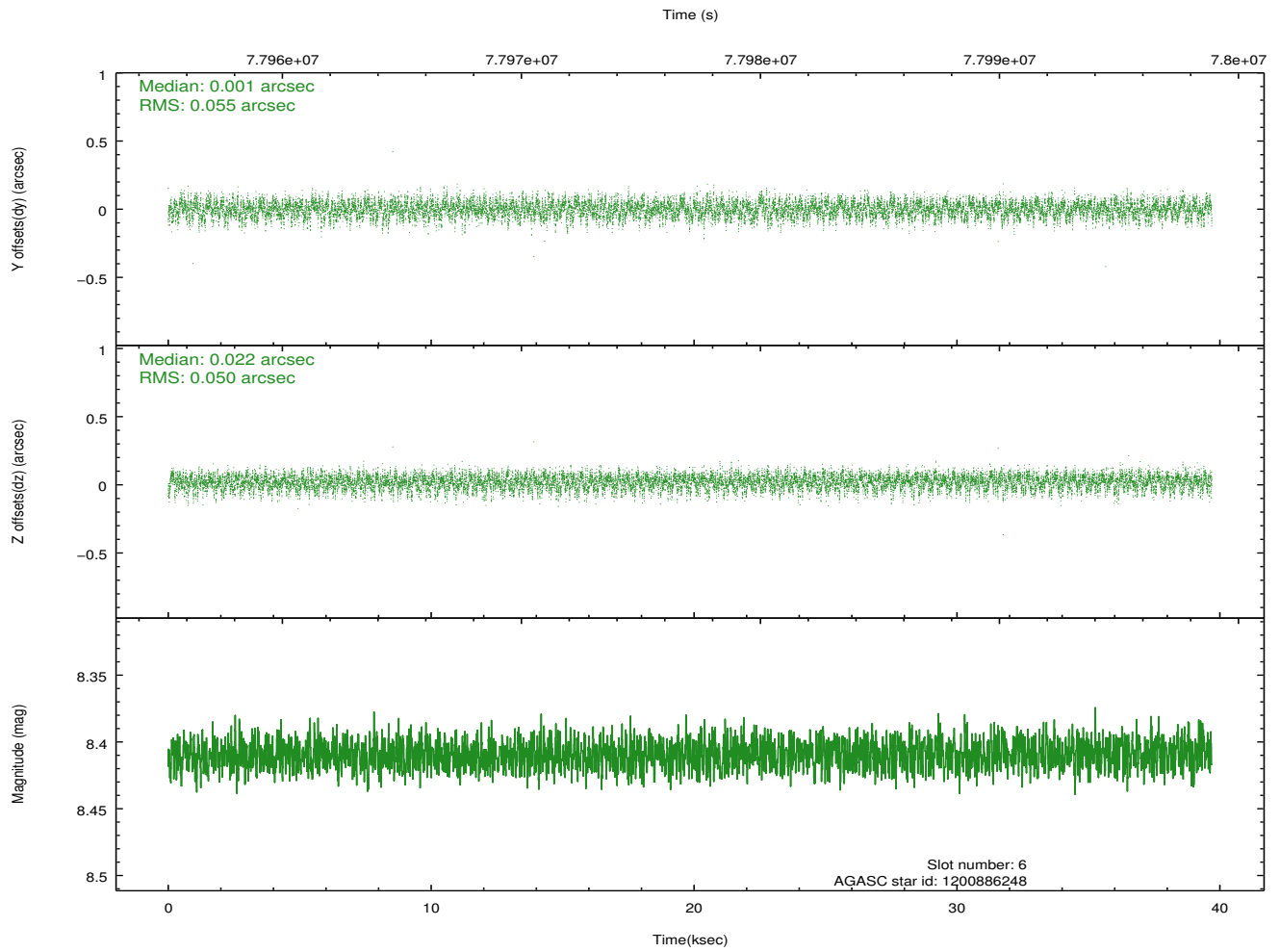
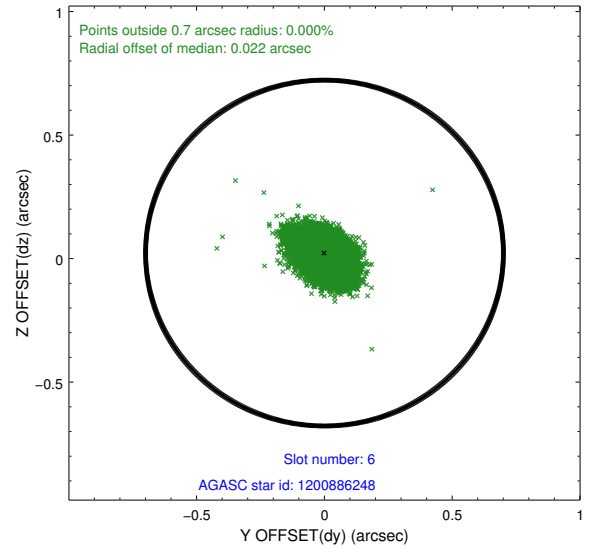
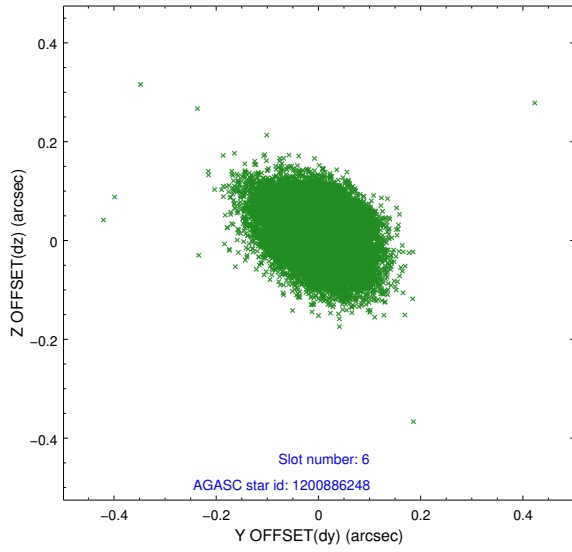
2.4.2 Slot 4



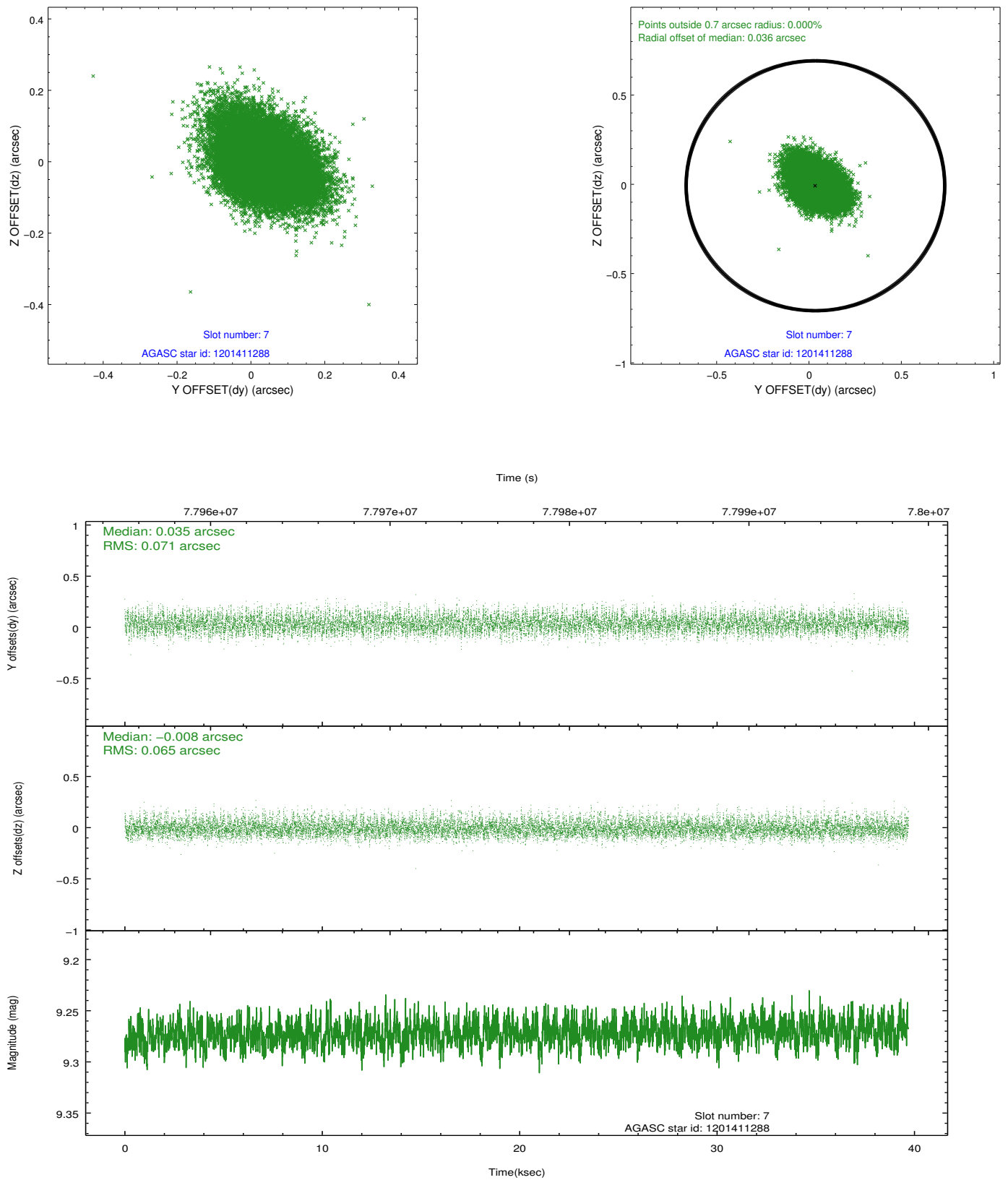
2.4.3 Slot 5



2.4.4 Slot 6

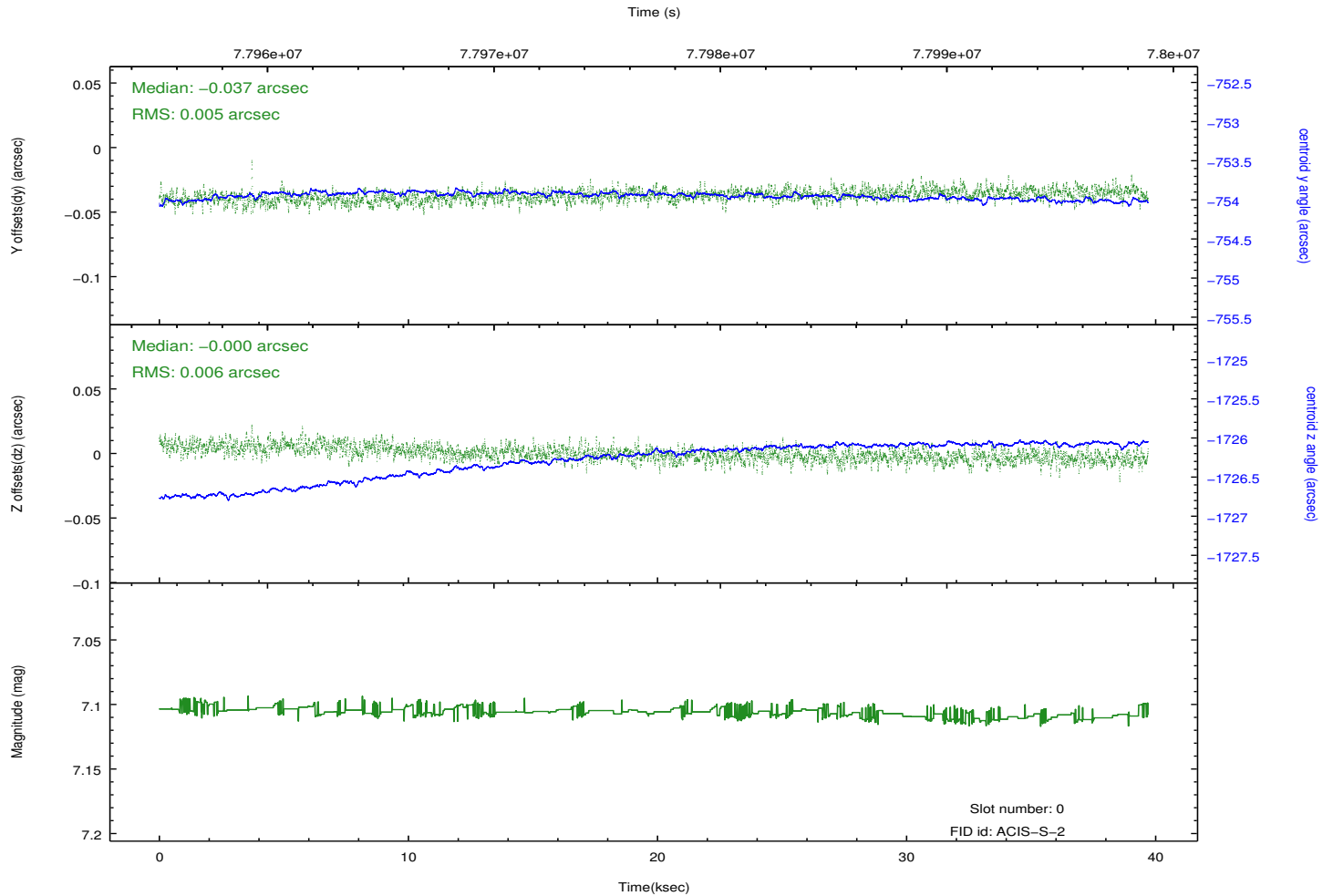
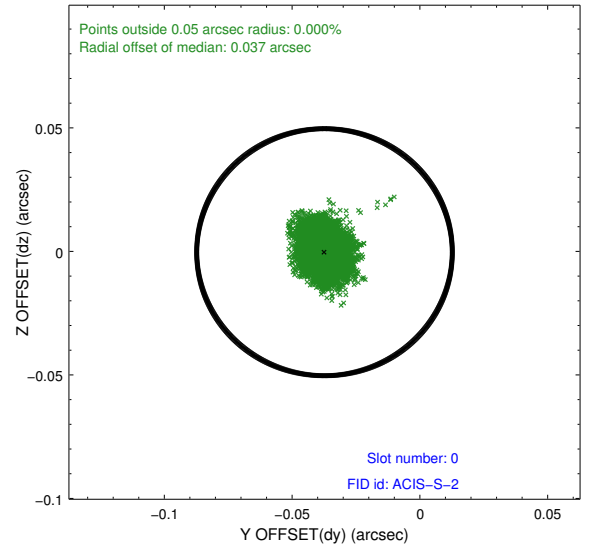
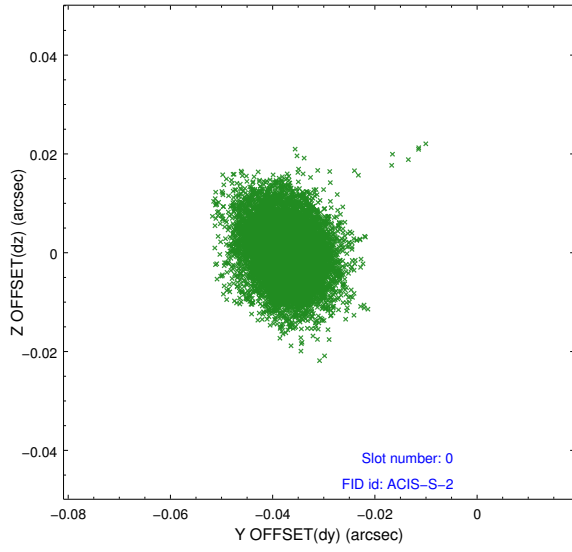


2.4.5 Slot 7

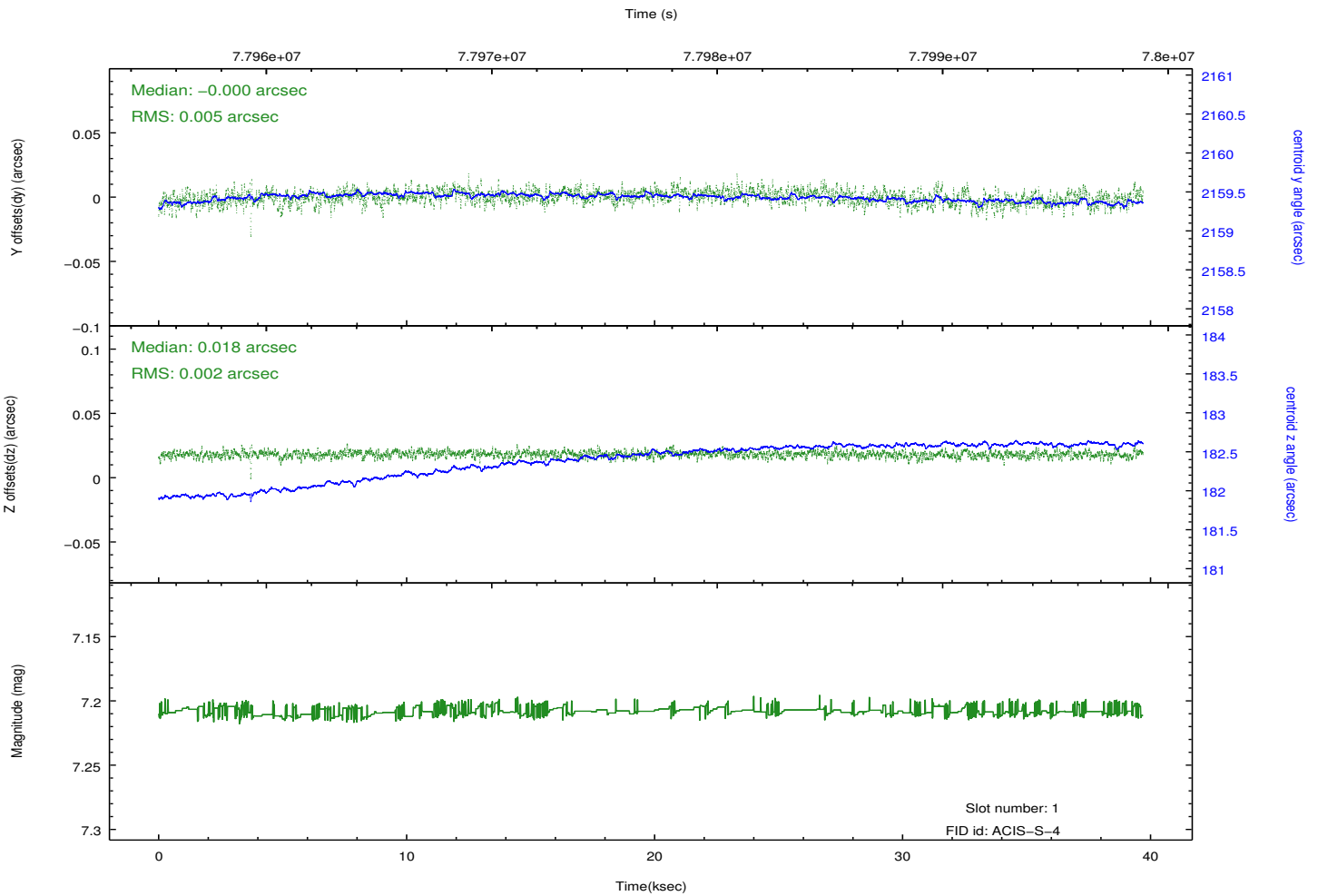
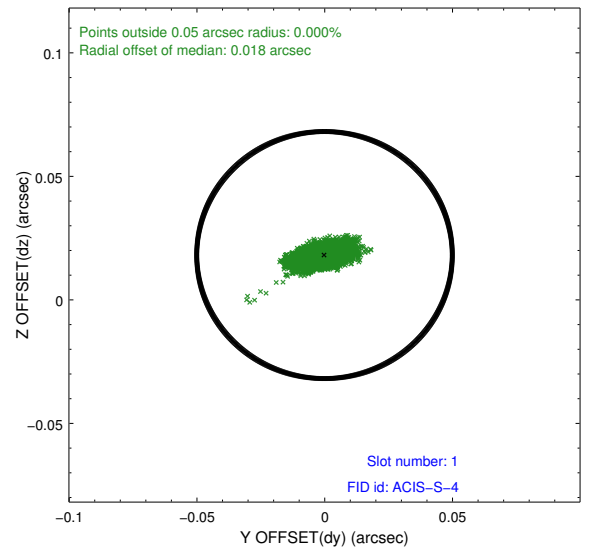
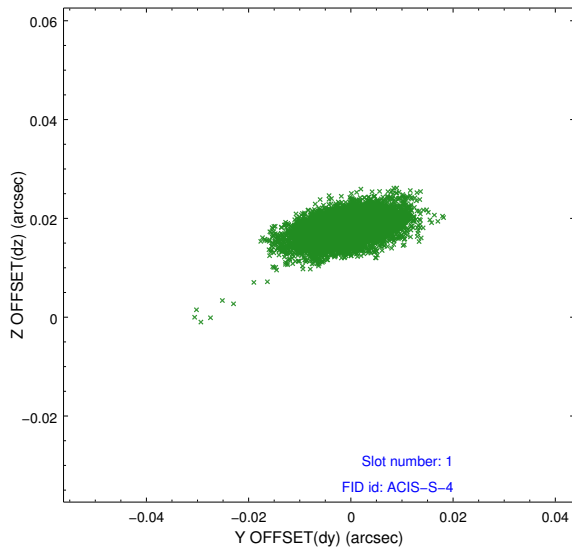


2.5 FID Slots

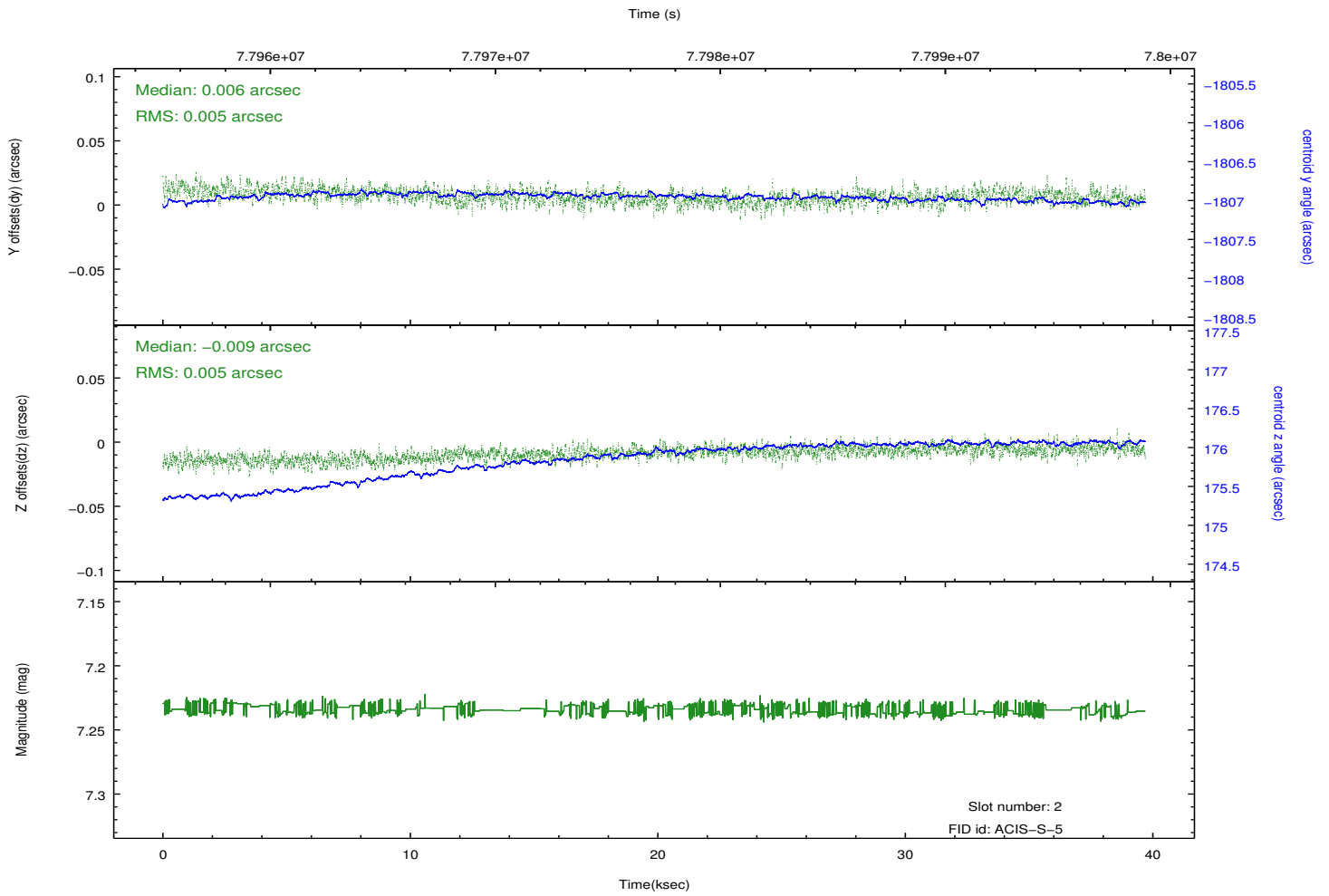
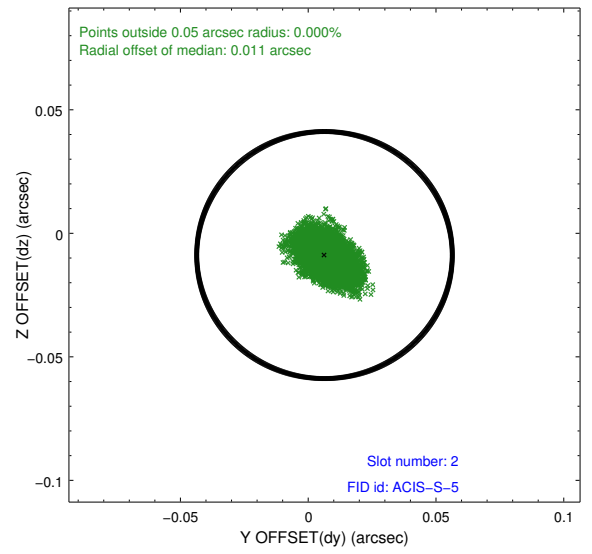
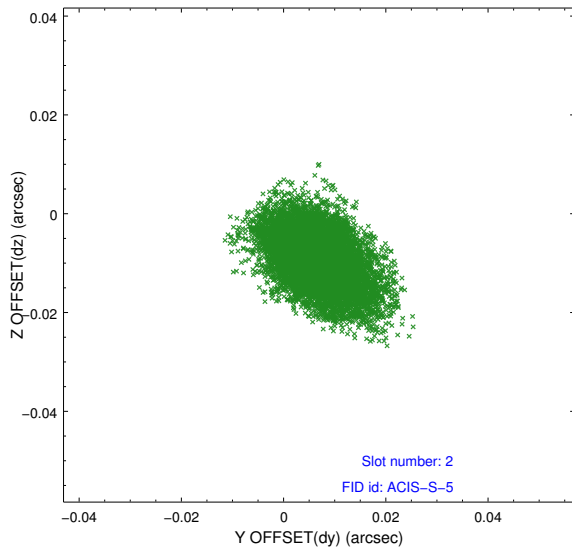
2.5.1 Slot 0



2.5.2 Slot 1



2.5.3 Slot 2



A Summary

A.1 Status

V&V Scientist	Beth Sundheim
V&V Date (YYYY-MM-DD)	2012.08.31
V&V Edition	1
V&V Disposition and Status	OK
V&V Charge Time	39.59

A.2 Comments

Charge time for this observation remains at previous value of 39.59 ksec.