

V&V Reference Report

L2 ASCDS Version : 8.4.5

Observation 11808 - L2 Version 2
Chandra X-Ray Center

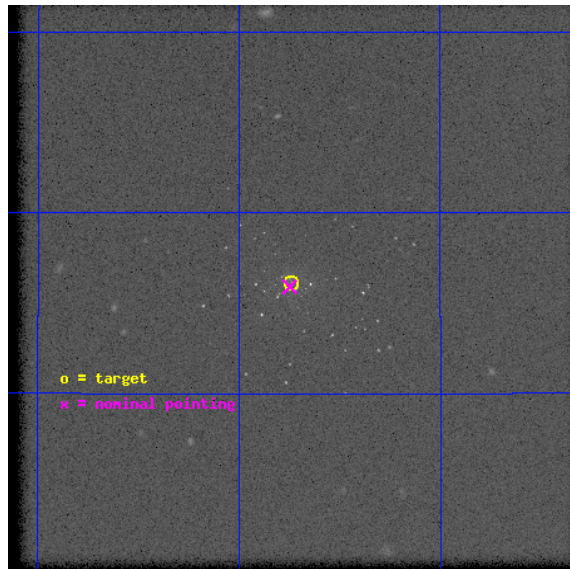
L2 Processing Date : Jun 27 2012

Contents

1	Front	2
2	OBI	3
2.1	OBI	3
2.1.1	Images	3
2.1.2	Parameters	4
2.1.3	Events	4
2.2	Compared Parameters	5
2.3	Aspect	6
2.4	Star Slots	9
2.4.1	Slot 3	9
2.4.2	Slot 4	10
2.4.3	Slot 5	11
2.4.4	Slot 6	12
2.4.5	Slot 7	13
2.5	FID Slots	14
2.5.1	Slot 0	14
2.5.2	Slot 1	15
2.5.3	Slot 2	16
A	Summary	17
A.1	Status	17
A.2	Comments	17

1 Front

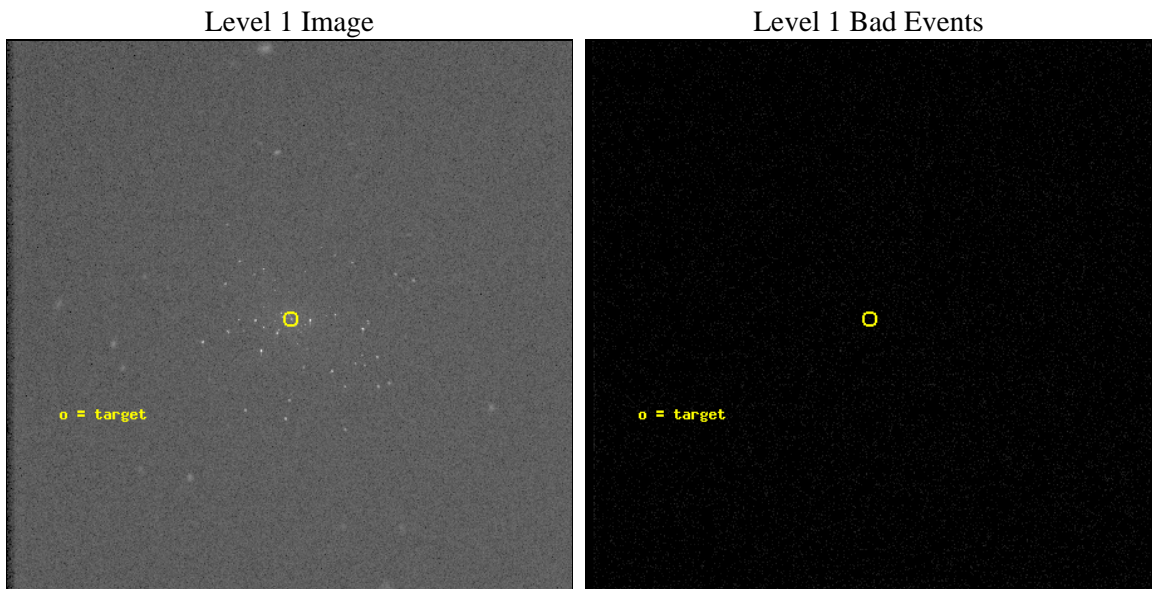
seq_num	300272	Sequence number
obs_id	11808	Observation id
title	Resolving short supersoft source states	Proposal title
observer	Dr. Peter Predehl	Principal investigator
object	M31	Source name
ra_targ	10.684583	Observer's specified target RA [deg]
dec_targ	41.269278	Observer's specified target Dec [deg]
ra_nom	10.686807307715	Nominal RA [deg]
dec_nom	41.26535680298	Nominal Dec [deg]
roll_nom	314.83259487375	Nominal Roll [deg]
revision	2	Processing version of data
ontime	17329.932128429	[s]
livetime	17114.939956739	Overtime multiplied by DTCOR
l2events	1431407	Number of level 2 events



2 OBI

2.1 OBI

2.1.1 Images



2.1.2 Parameters

obi_num	1	Obi number	sched_exp_time	17162.758000	[s] Scheduled observation exposure time
ascdsver	8.4.5	Processing system revision	ontime	17329.932128429	[s]
caldbver	4.5.0	 	l1events	2324174	Number of level 1 events
date	2012-06-27T17:31:59	Date and time of file creation			
revision	2	Processing version of data			

2.1.3 Events

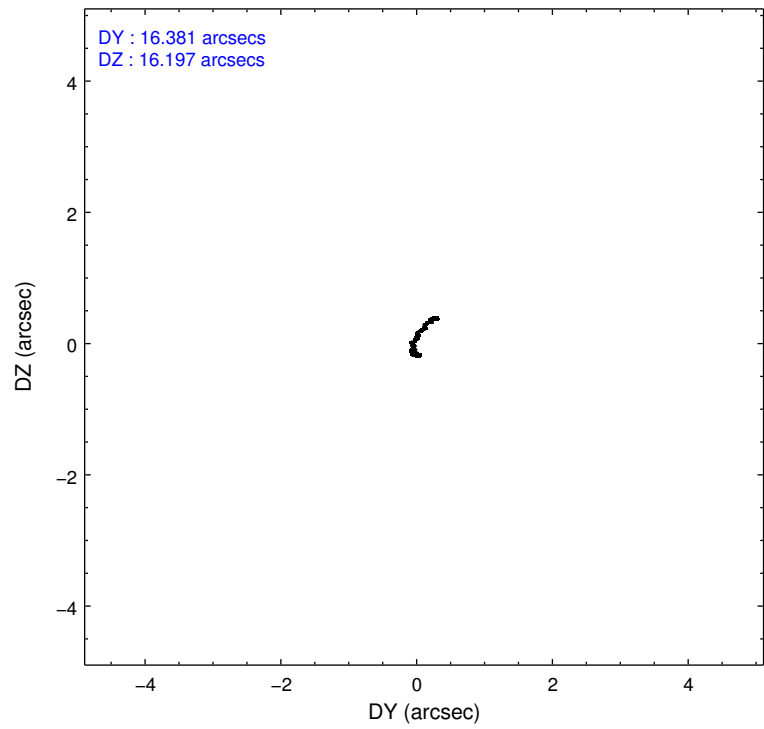
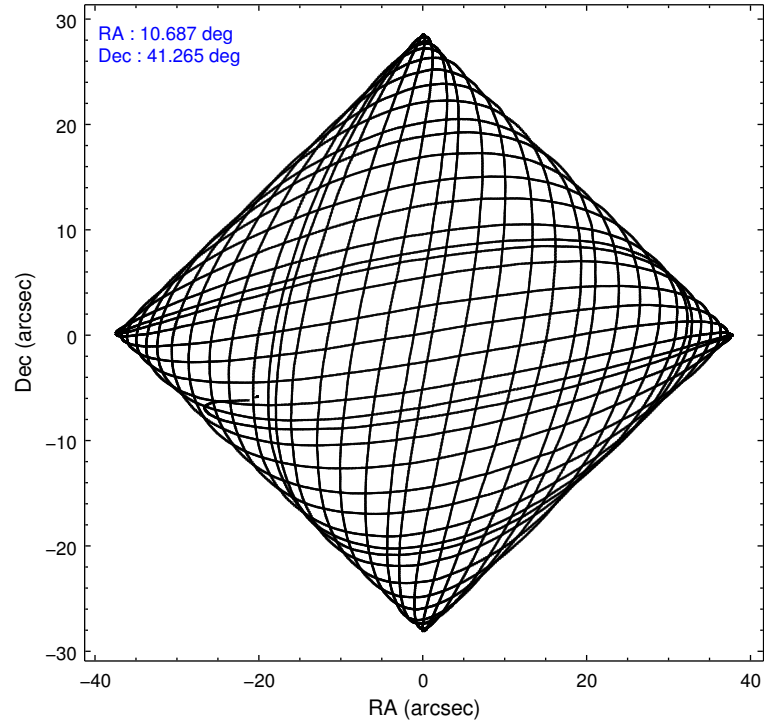
Level 1 Events

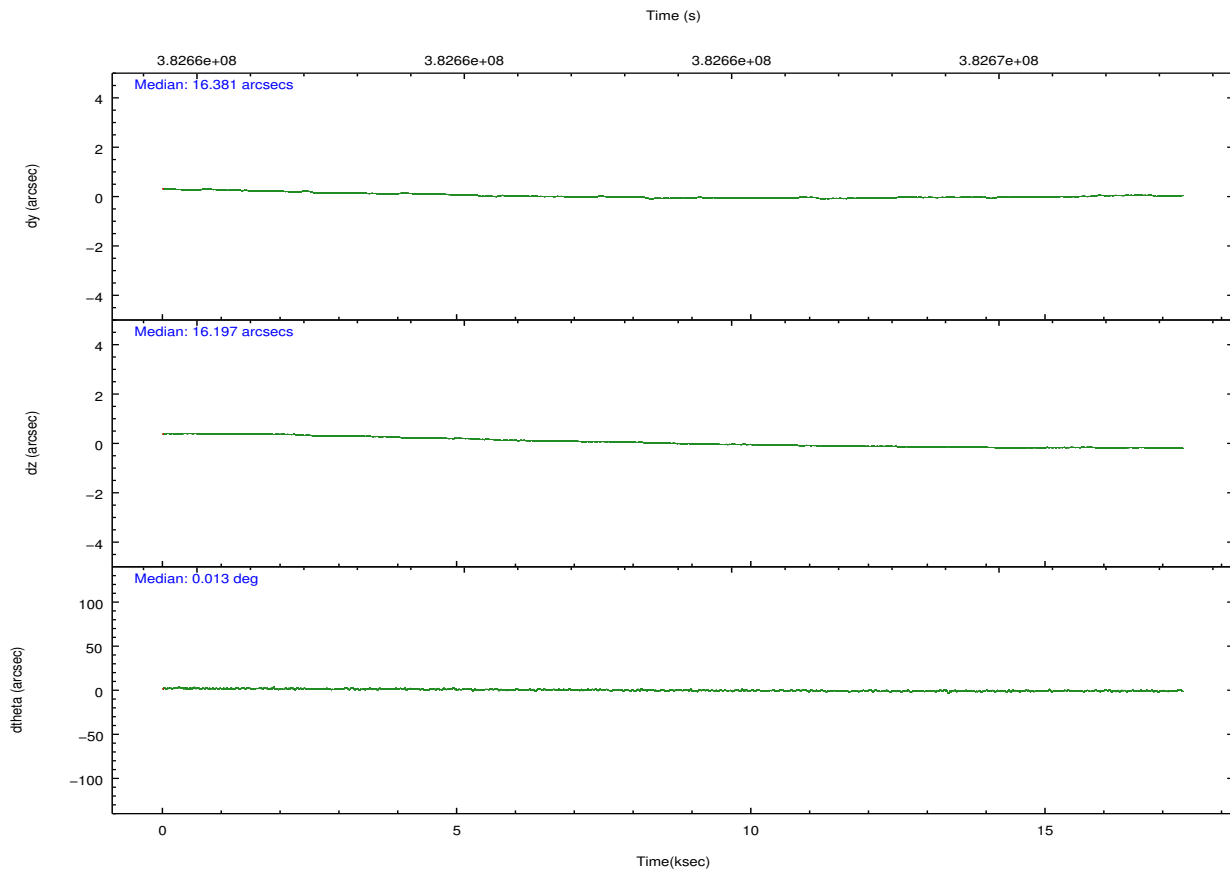
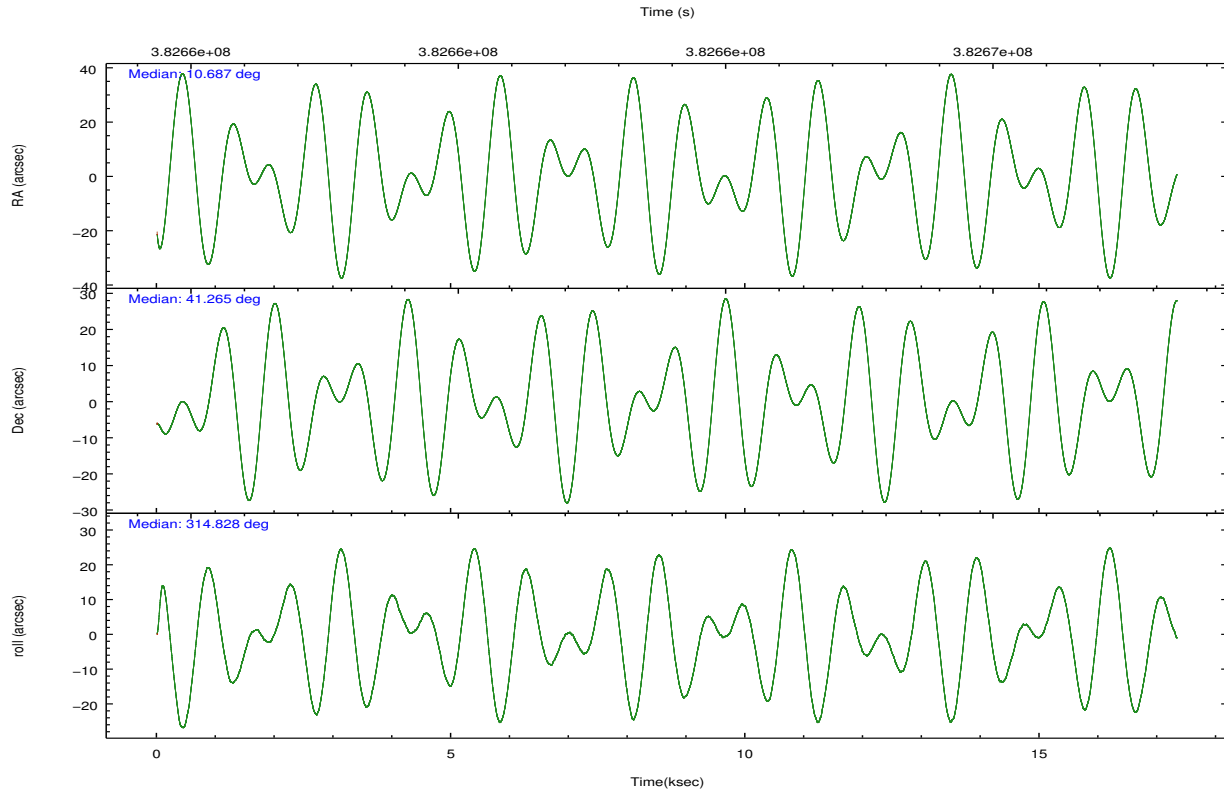
	segment 0
level 1 events	2324174
rejected events	288330
rejected %	12%

2.2 Compared Parameters

Parameter	Planned	Actual	Parameter	Planned	Actual
Instrument	HRC	HRC	Obspar format version number	7	7
Detector	HRC-I	HRC-I	Obspar file type	PREDICTED	ACTUAL
Grating	NONE	NONE	Obspar update status	NONE	UPDATED
Data mode	OBSERVING	OBSERVING			
Observation mode	POINTING	POINTING			
[deg] Pointing RA	10.651662	10.68680730771456			
[deg] Pointing Dec	41.271894	41.26535680298047			
[deg] Pointing Roll	314.951277	314.8325948737526			
[s] Window start time (MET)	382579266.184000	382579266.184000			
[s] Window stop time (MET)	383616066.184000	383616066.184000			
[mm] SIM focus pos	-1.040293	-1.038866356238299			
[mm] SIM defocus	0	0.001426264420575141			
[mm] SIM translation stage pos	126.985494	126.9829799899862			
[mm] SIM translation stage offset	0	0.002508901615314585			
[s] Observation start time (MET)	382655413.184000	382653902.18732			
Observation start date	2010-02-15T21:09:07	2010-02-15T20:45:02			
[s] Observation end time (MET)	382672575.184000	382673554.00081			
Observation end date	2010-02-16T01:55:09	2010-02-16T02:12:34			

2.3 Aspect



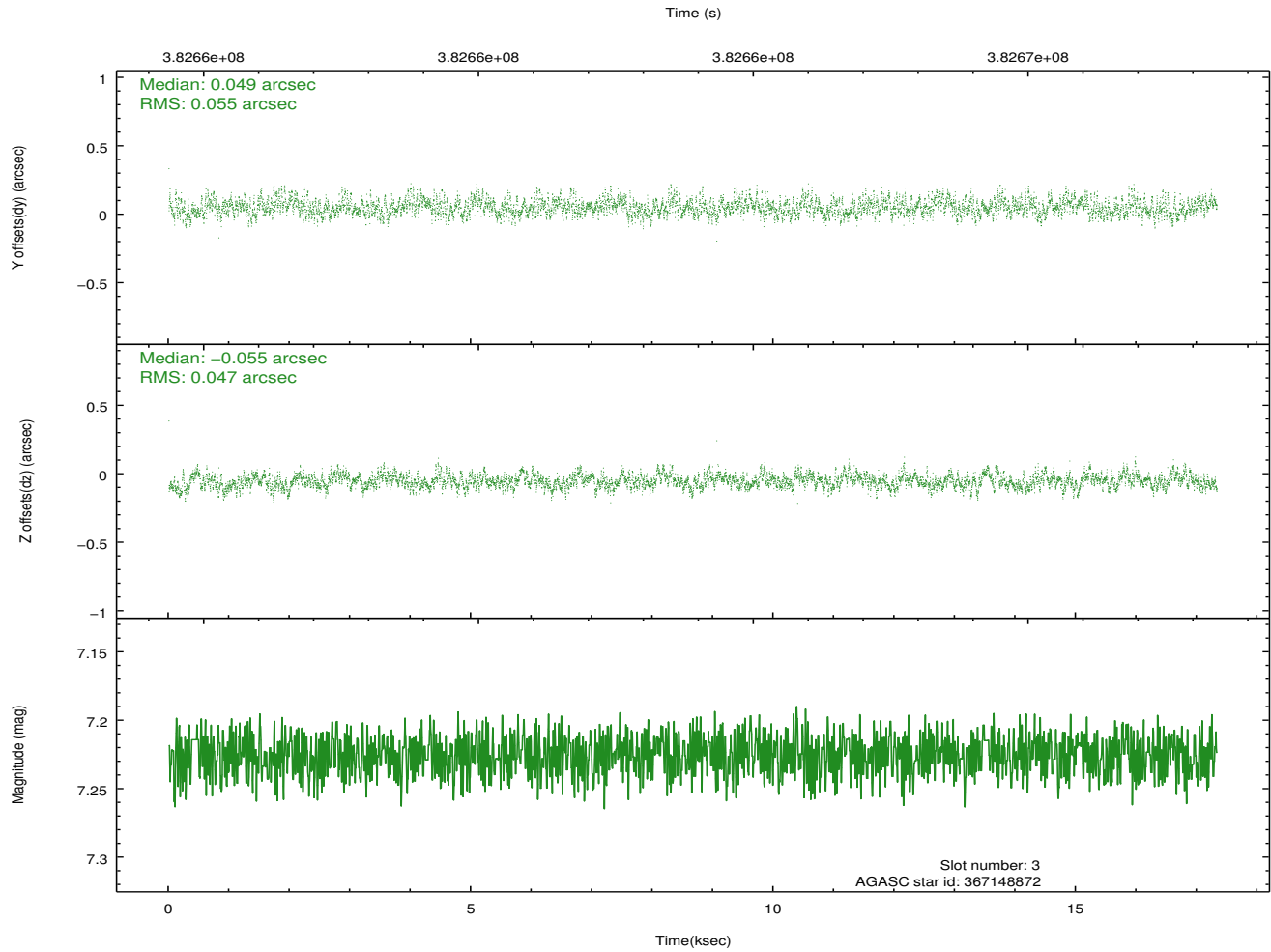
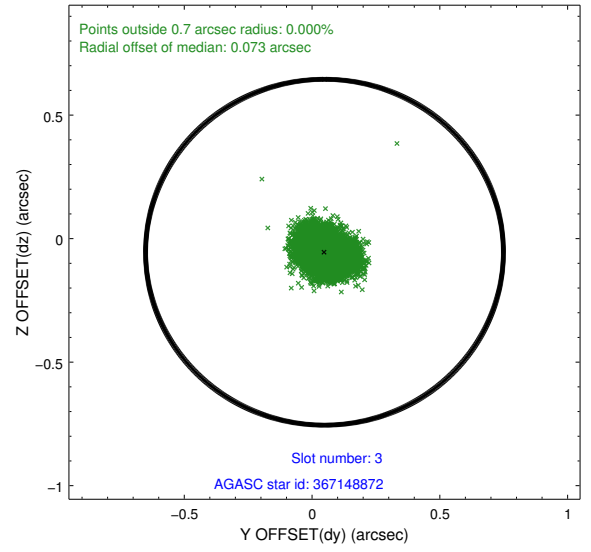
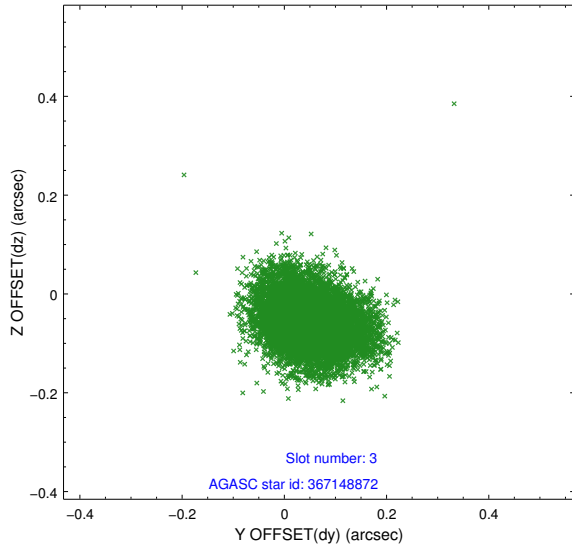


Slot Statistics

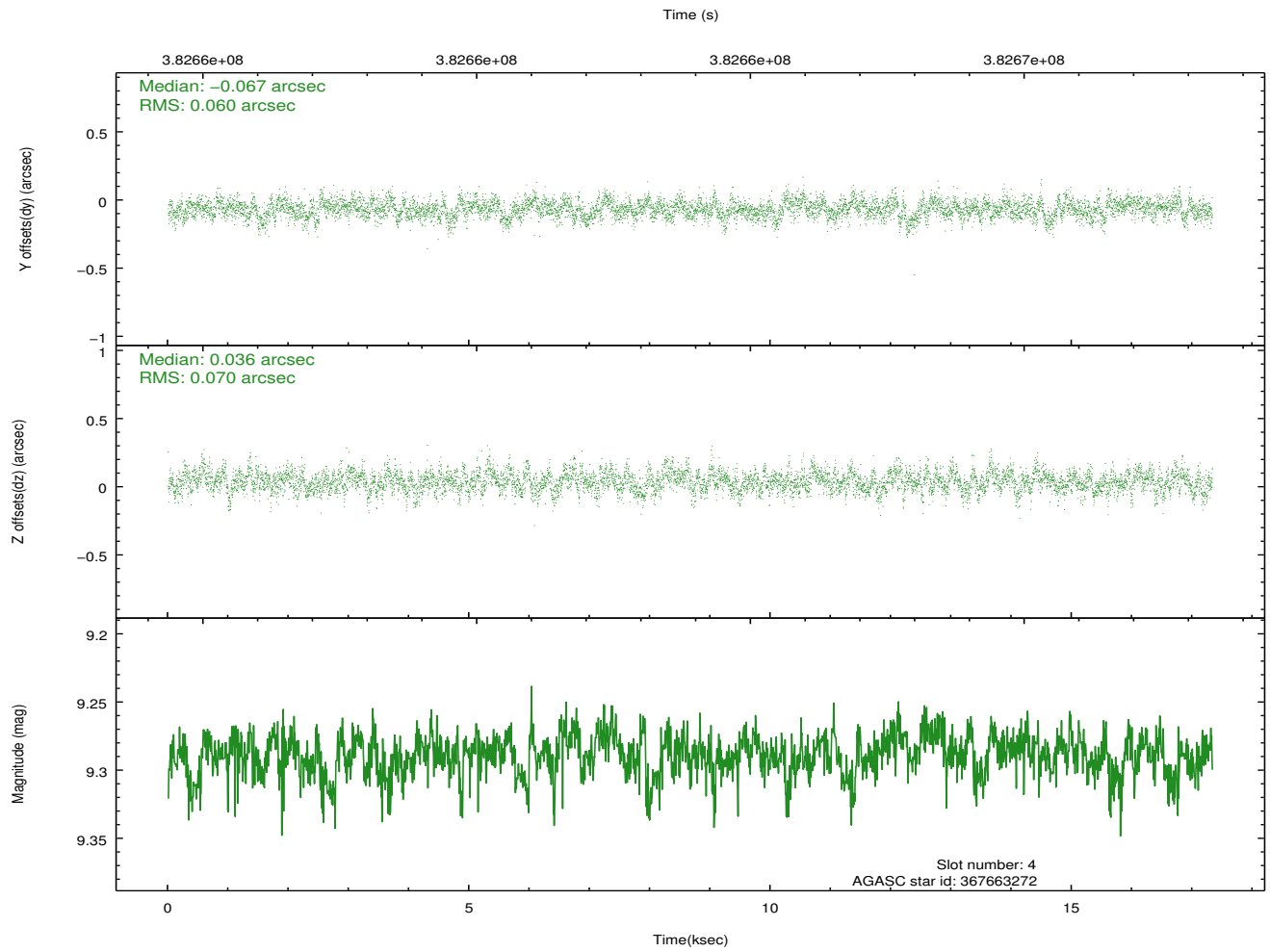
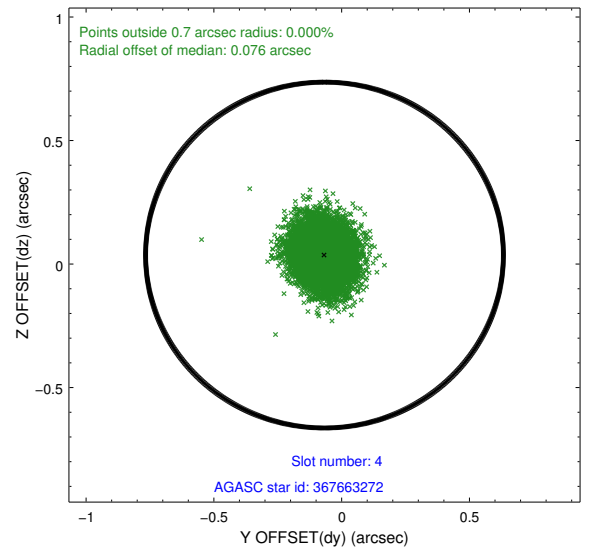
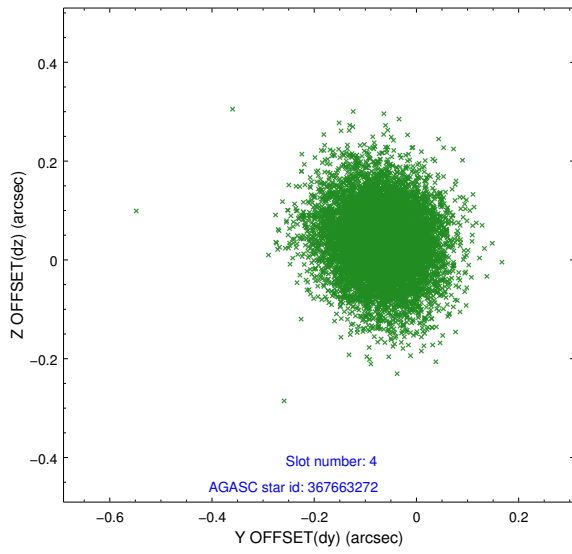
slot	status	id	mag	n_pts	med_dy	med_dz	dr1	dr2	ra	dec	mean_y	mean_z
0	FID	HRC-I-1	7.01	4227	-0.141	-0.071	0.008	0.015	0.000000	0.000000	-772.50	-1304.38
1	FID	HRC-I-2	7.04	4228	0.179	-0.068	0.012	0.020	0.000000	0.000000	840.27	-1306.37
2	FID	HRC-I-4	7.02	4227	0.078	0.047	0.007	0.011	0.000000	0.000000	1270.88	997.45
3	GUIDE	367148872	7.23	8453	0.049	-0.055	0.078	0.124	10.505940	40.688258	1206.40	-1766.07
4	GUIDE	367663272	9.29	8448	-0.067	0.036	0.098	0.161	10.656279	41.699429	-1080.70	1095.21
5	GUIDE	367674552	8.85	8452	-0.017	0.011	0.101	0.159	11.016238	41.570845	-69.39	1457.03
6	GUIDE	367146616	8.84	8449	-0.047	-0.065	0.090	0.150	11.418645	41.190163	1669.70	1269.53
7	GUIDE	367657272	8.45	8449	0.083	0.071	0.072	0.117	11.834471	41.298907	2176.10	2348.65

2.4 Star Slots

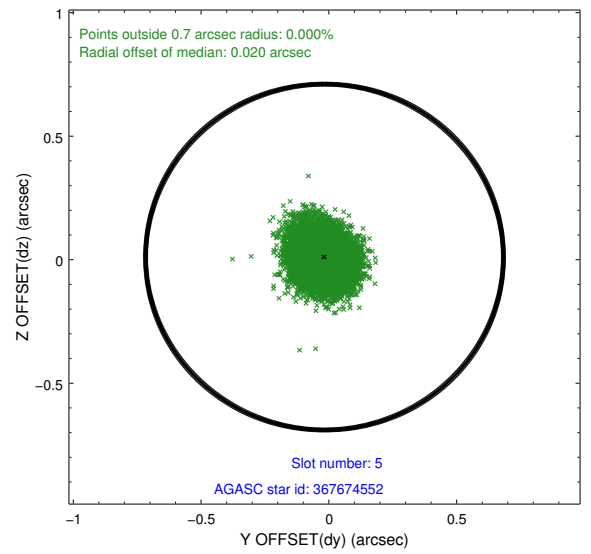
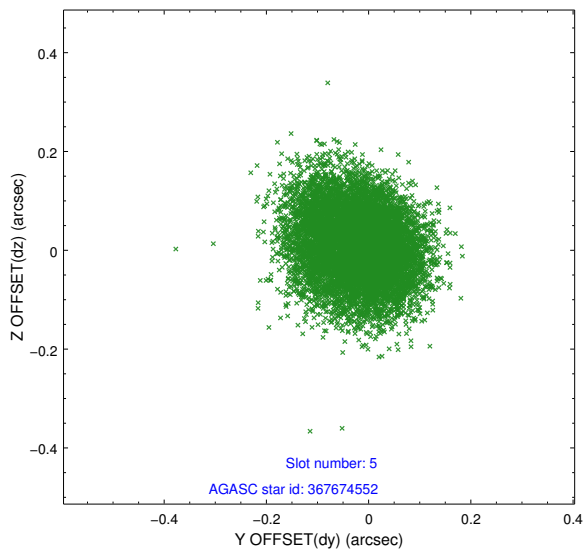
2.4.1 Slot 3



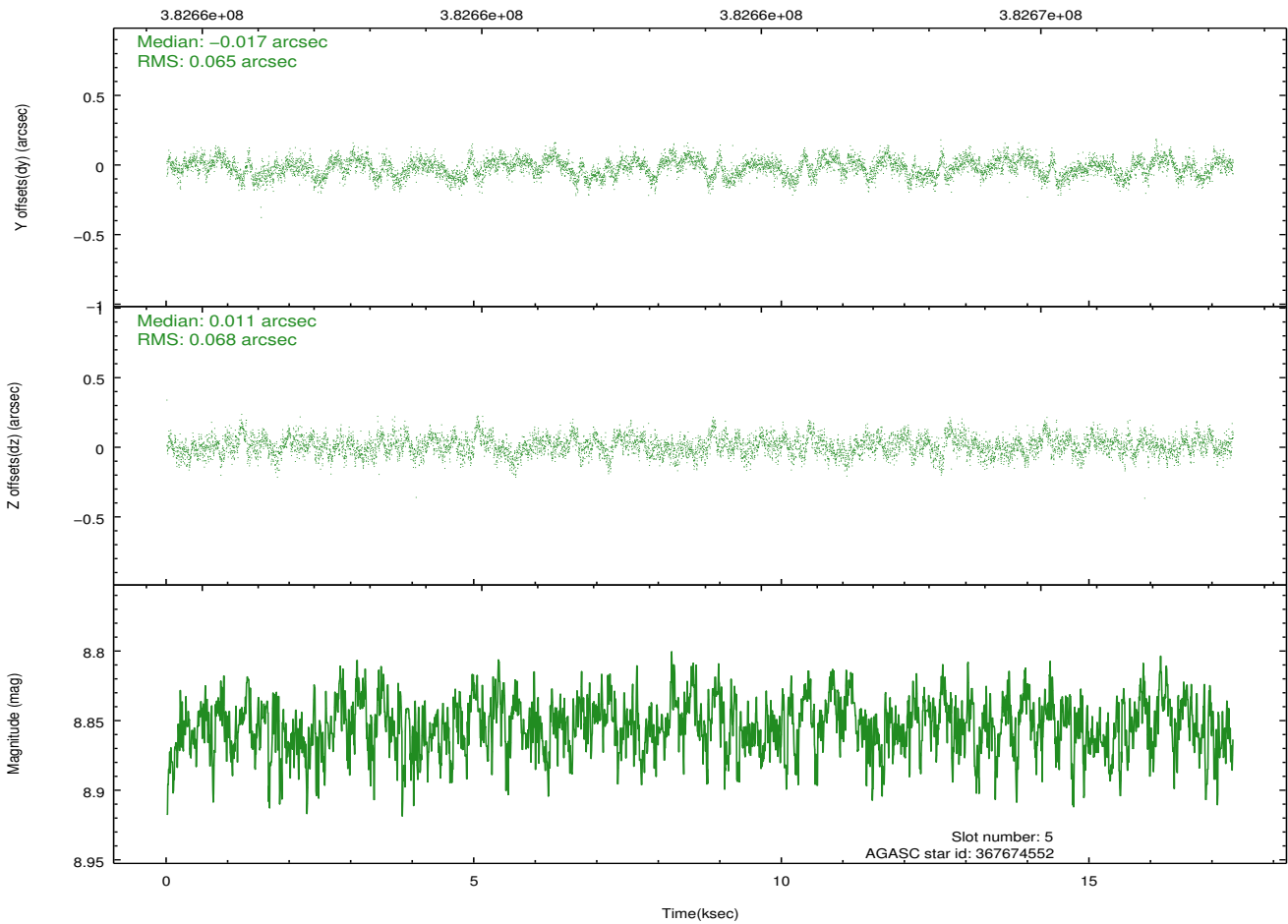
2.4.2 Slot 4



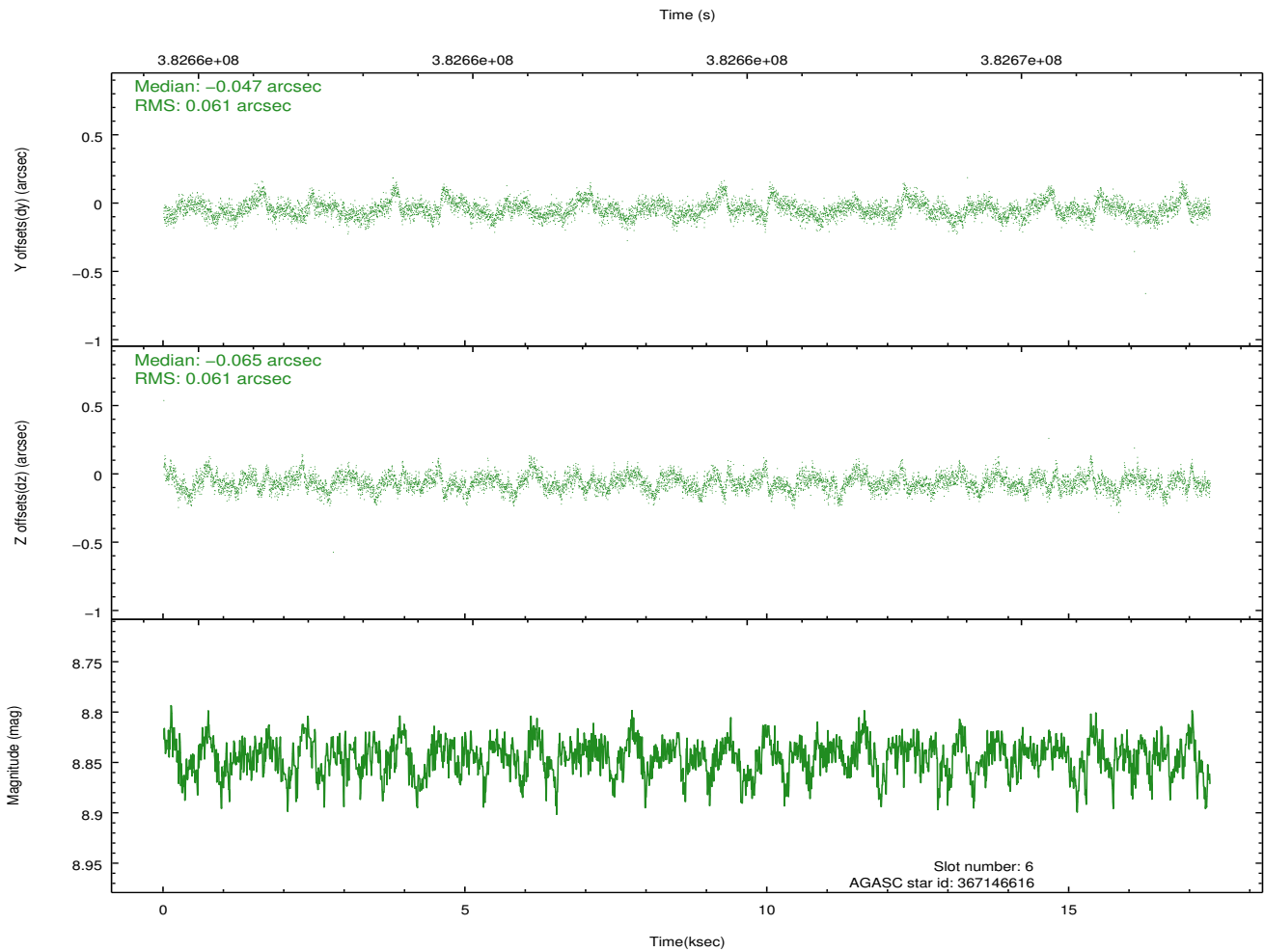
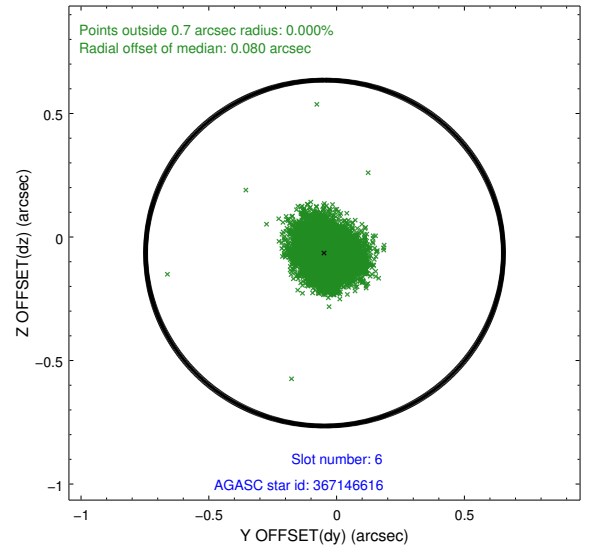
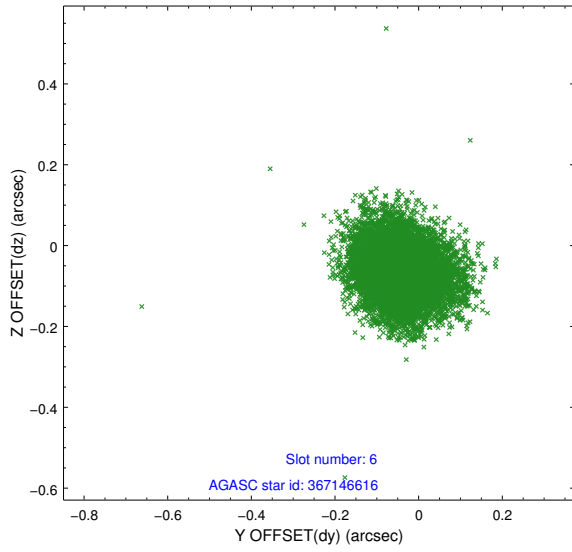
2.4.3 Slot 5



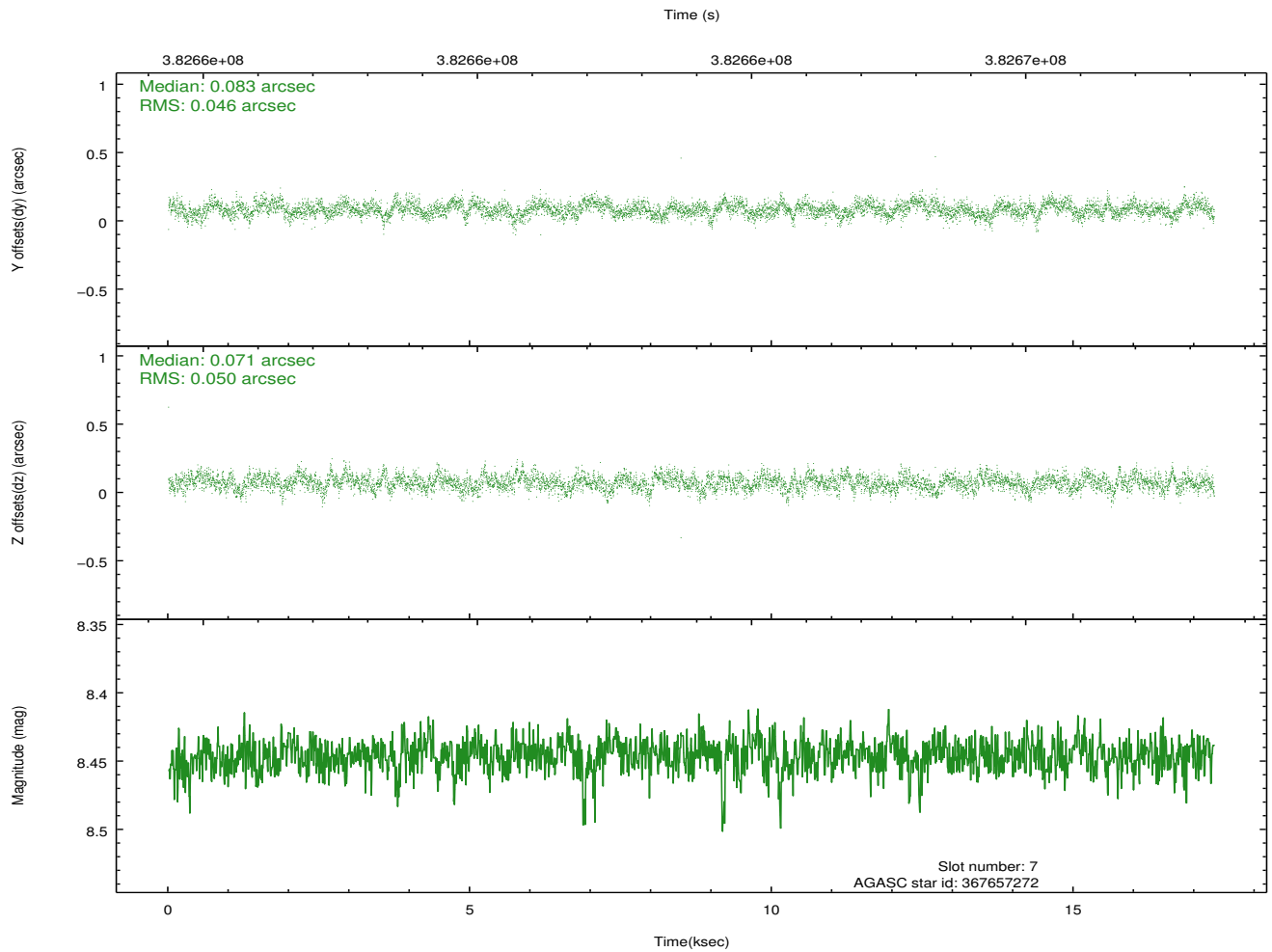
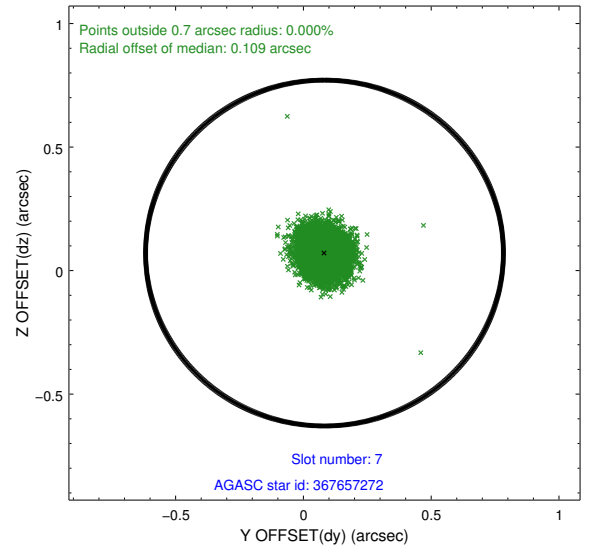
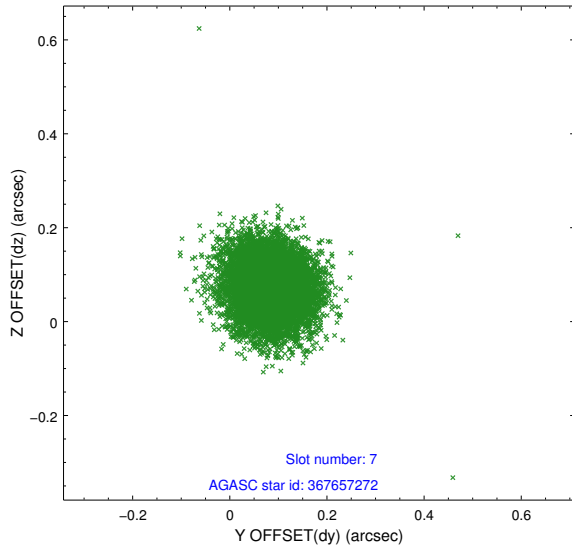
Time (s)



2.4.4 Slot 6

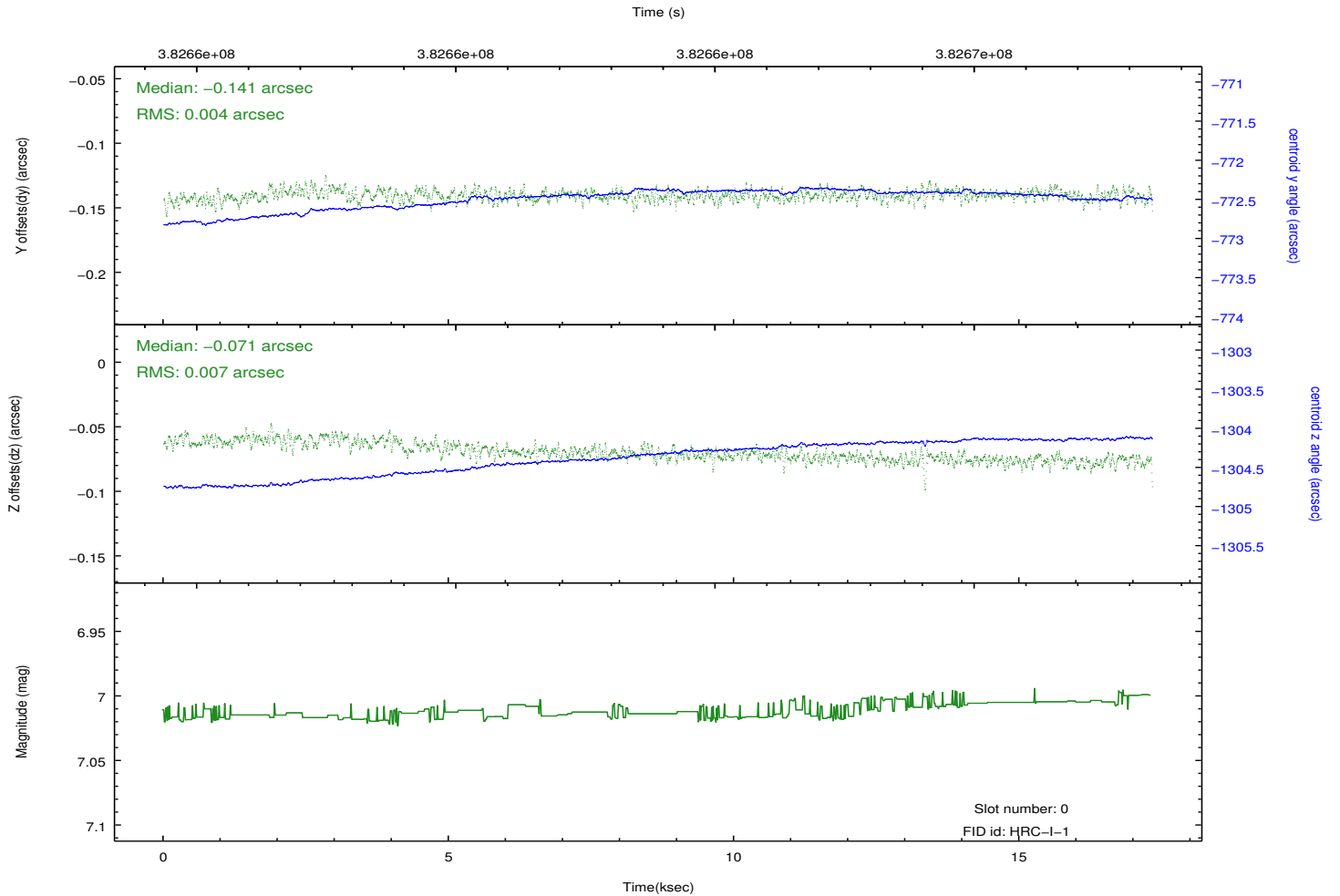
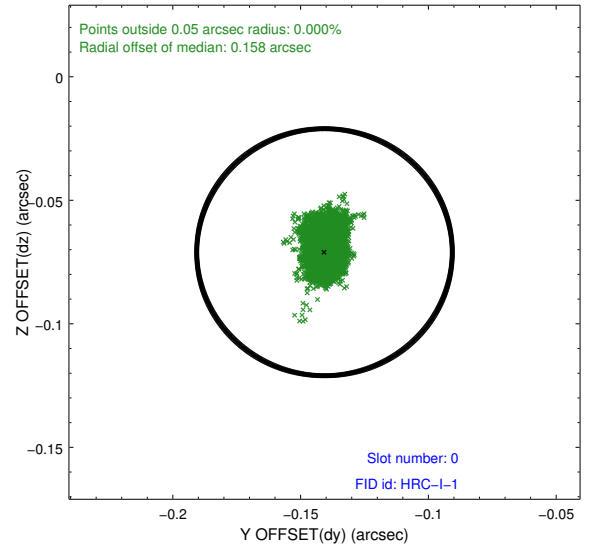
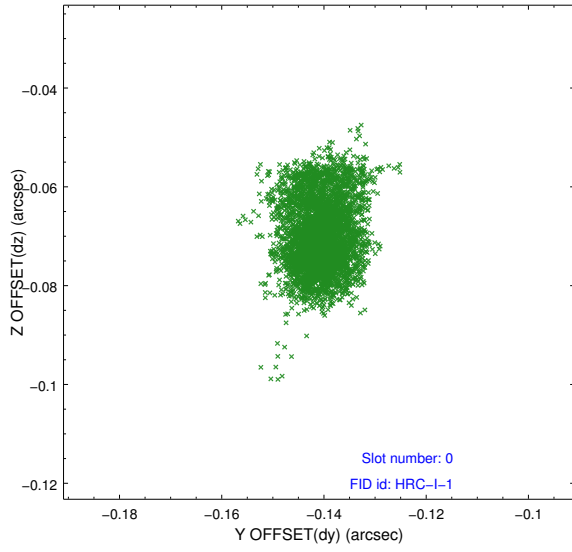


2.4.5 Slot 7

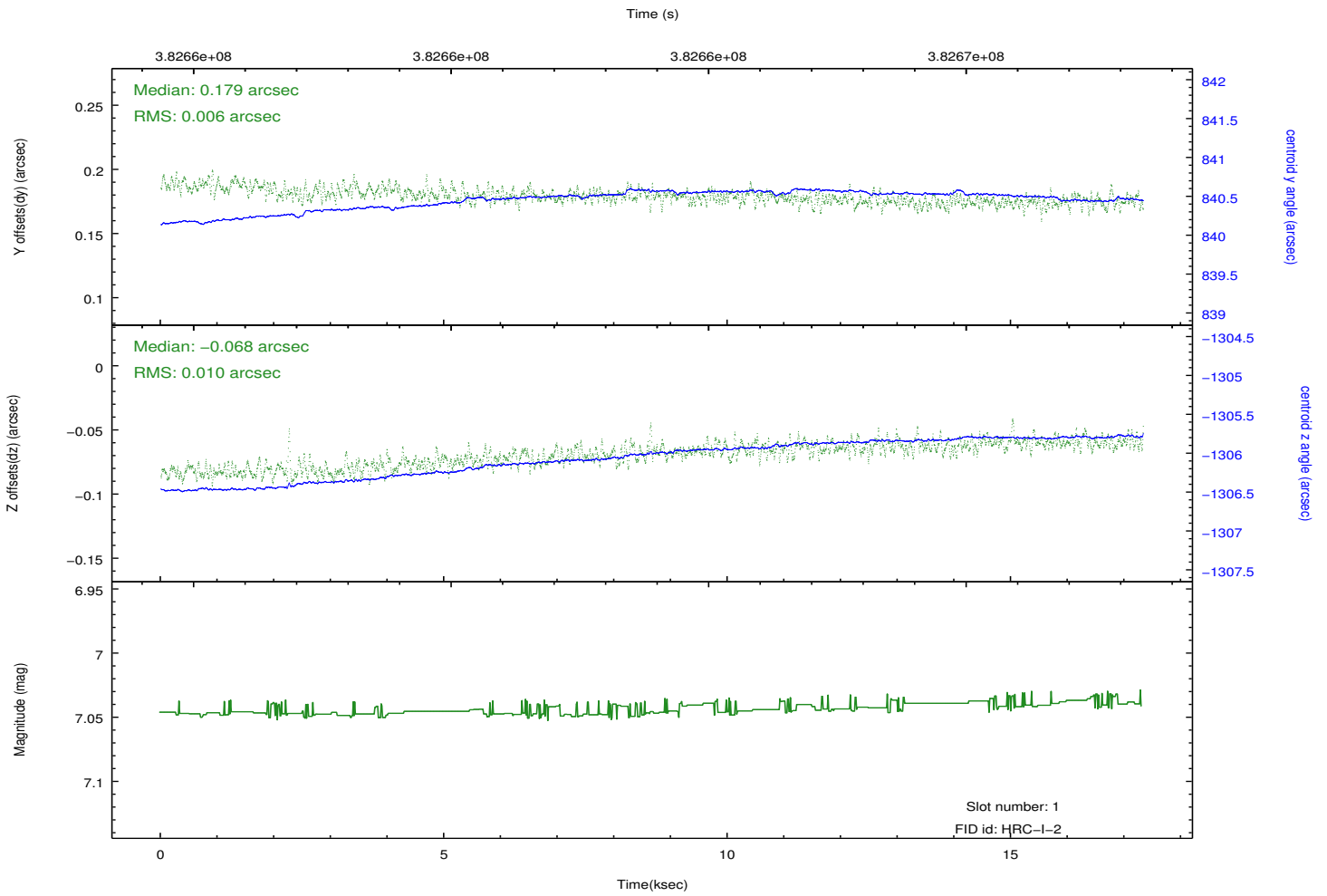
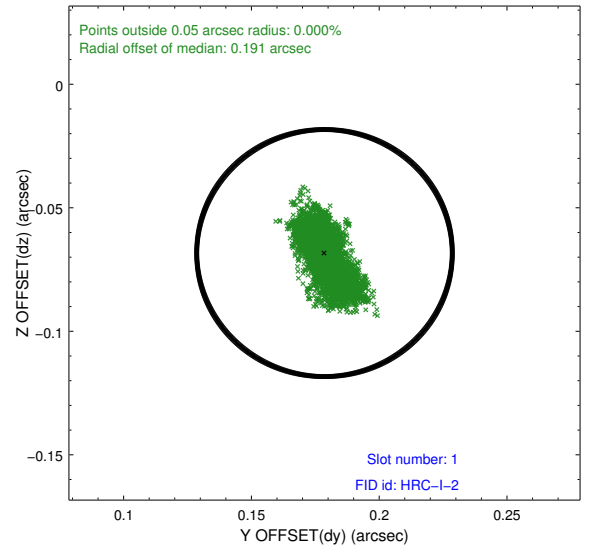
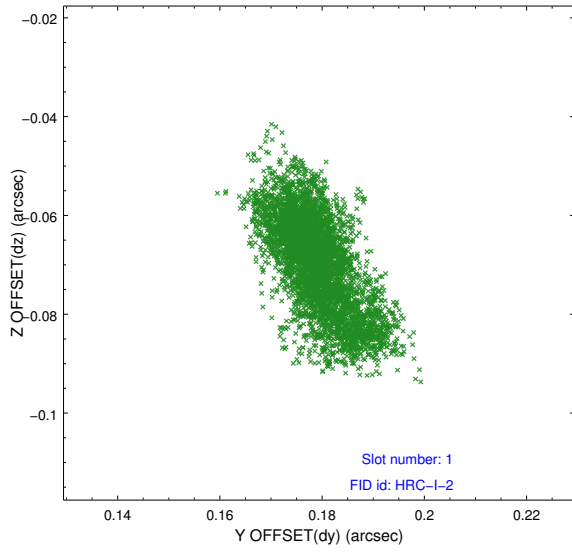


2.5 FID Slots

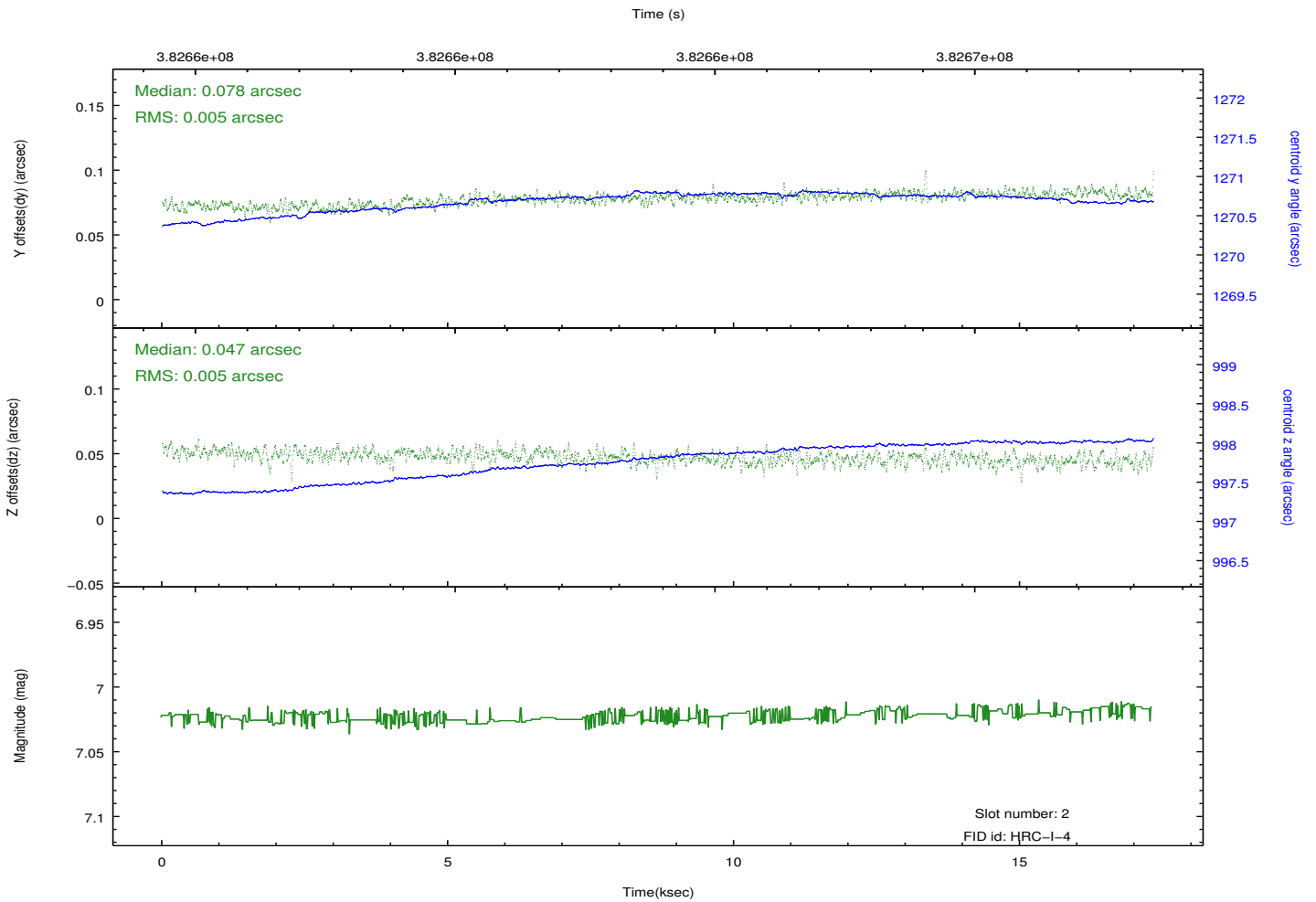
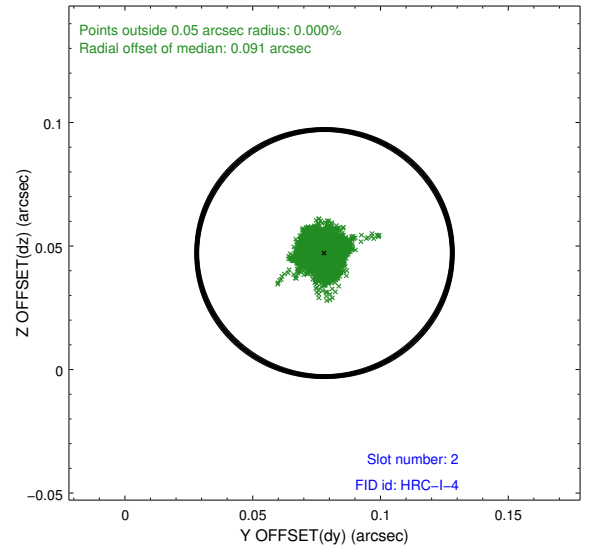
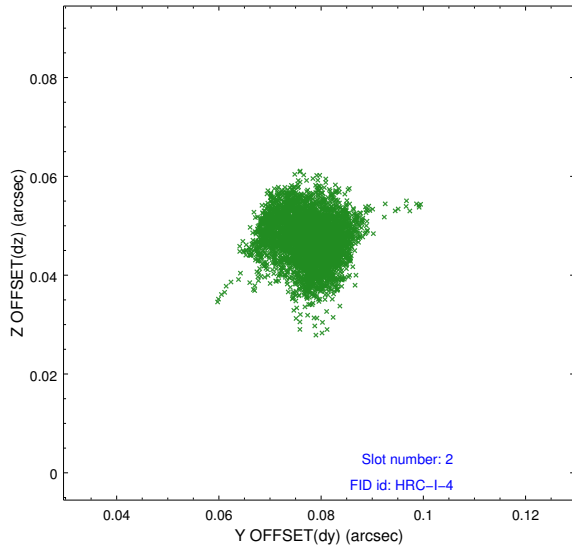
2.5.1 Slot 0



2.5.2 Slot 1



2.5.3 Slot 2



A Summary

A.1 Status

V&V Scientist	Jen Lauer
V&V Date (YYYY-MM-DD)	2012.07.03
V&V Edition	1
V&V Disposition and Status	OK
V&V Charge Time	17.329932128131

A.2 Comments

Window constraint met.