

V&V Reference Report

L2 ASCDS Version : 8.4.5

Observation 12008 - L2 Version 2
Chandra X-Ray Center

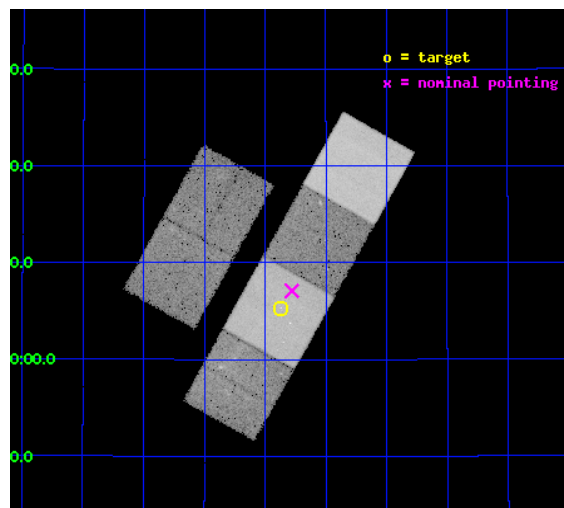
L2 Processing Date : Jun 15 2012

Contents

1	Front	2
2	OBI	3
2.1	OBI	3
2.1.1	Images	3
2.1.2	Bias	3
2.1.3	Parameters	4
2.1.4	Events	4
2.2	Compared Parameters	5
2.3	Aspect	6
2.4	Star Slots	9
2.4.1	Slot 3	9
2.4.2	Slot 4	10
2.4.3	Slot 5	11
2.4.4	Slot 6	12
2.4.5	Slot 7	13
2.5	FID Slots	14
2.5.1	Slot 0	14
2.5.2	Slot 1	15
2.5.3	Slot 2	16
A	Summary	17
A.1	Status	17
A.2	Comments	17

1 Front

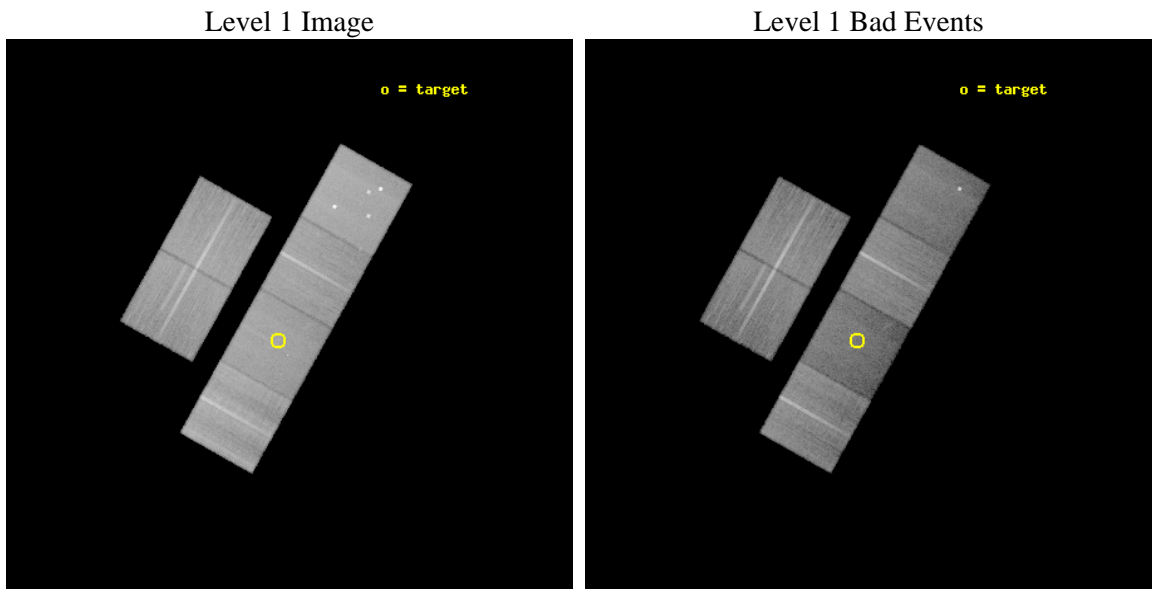
seq_num	501324	Sequence number
obs_id	12008	Observation id
title	A DEEP CHANDRA/NOAO INVESTIGATION TO IDENTIFY THE COUNTERPART OF AN OLD PULSAR DISCOVERED IN GAMMA-RAYS	Proposal title
observer	Dr. Andrea De Luca	Principal investigator
object	LAT PSR J0357+32	Source name
dtcycle	0	
cycle	P	events from which exps? Prim/Second/Both
ra_targ	59.469203	Observer's specified target RA [deg]
dec_targ	32.086771	Observer's specified target Dec [deg]
ra_nom	59.445032380988	Nominal RA [deg]
dec_nom	32.118236139409	Nominal Dec [deg]
roll_nom	119.310852846	Nominal Roll [deg]
revision	2	Processing version of data
ontime	29519.999890089	Sum of GTIs [s]
livetime	29146.199876671	Livetime [s]
ontime2	29513.51782912	Sum of GTIs [s]
ontime3	29510.27681905	Sum of GTIs [s]
ontime5	29519.999890089	Sum of GTIs [s]
ontime6	29516.758869827	Sum of GTIs [s]
ontime7	29519.999890089	Sum of GTIs [s]
ontime8	29513.517869294	Sum of GTIs [s]
l2events	348463	Number of level 2 events



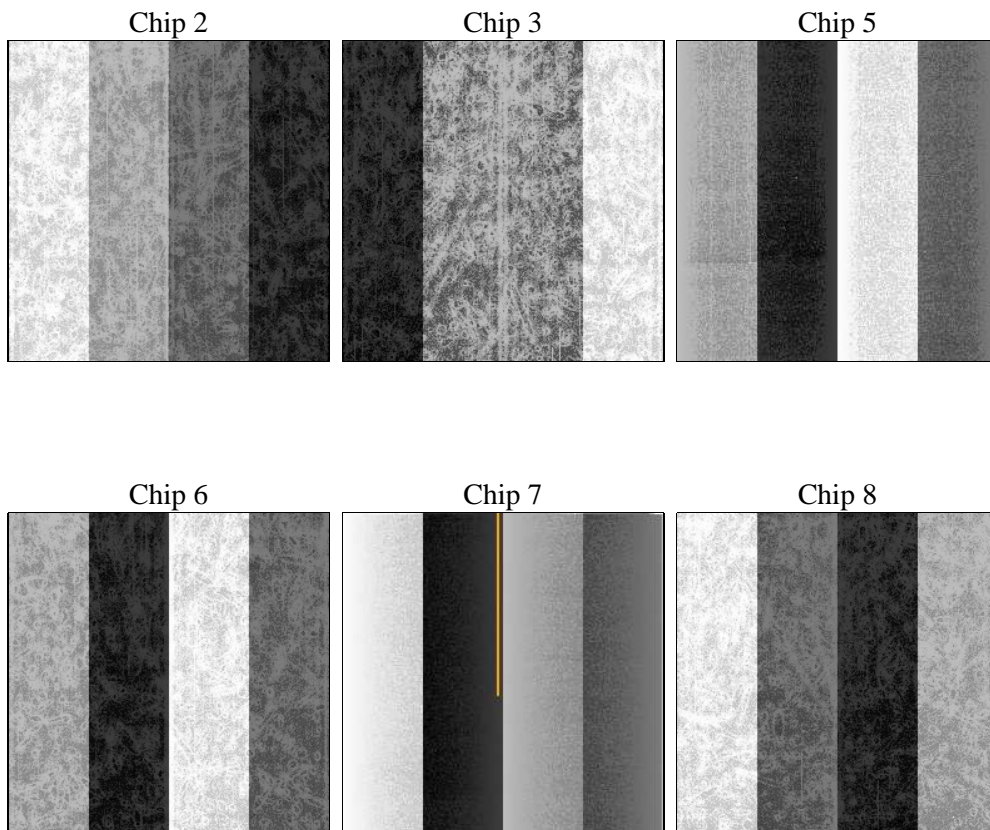
2 OBI

2.1 OBI

2.1.1 Images



2.1.2 Bias



2.1.3 Parameters

obi_num	0	Obi number	sched_exp_time	29356.253000	[s] Scheduled observation exposure time
ascdsver	8.4.5	Processing system revision	ontime	29519.999890089	Sum of GTIs [s]
caldbver	4.4.10	 	ontime2	29513.51782912	Sum of GTIs [s]
date	2012-06-15T02:04:48	Date and time of file creation	ontime3	29510.27681905	Sum of GTIs [s]
revision	2	Processing version of data	ontime5	29519.999890089	Sum of GTIs [s]
			ontime6	29516.758869827	Sum of GTIs [s]
			ontime7	29519.999890089	Sum of GTIs [s]
			ontime8	29513.517869294	Sum of GTIs [s]
			l1events	1615832	Number of level 1 events

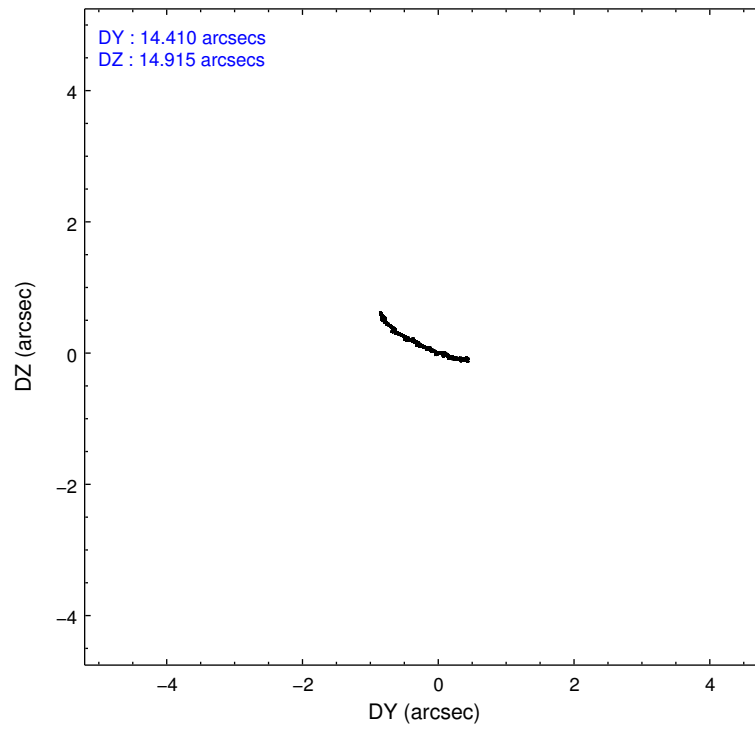
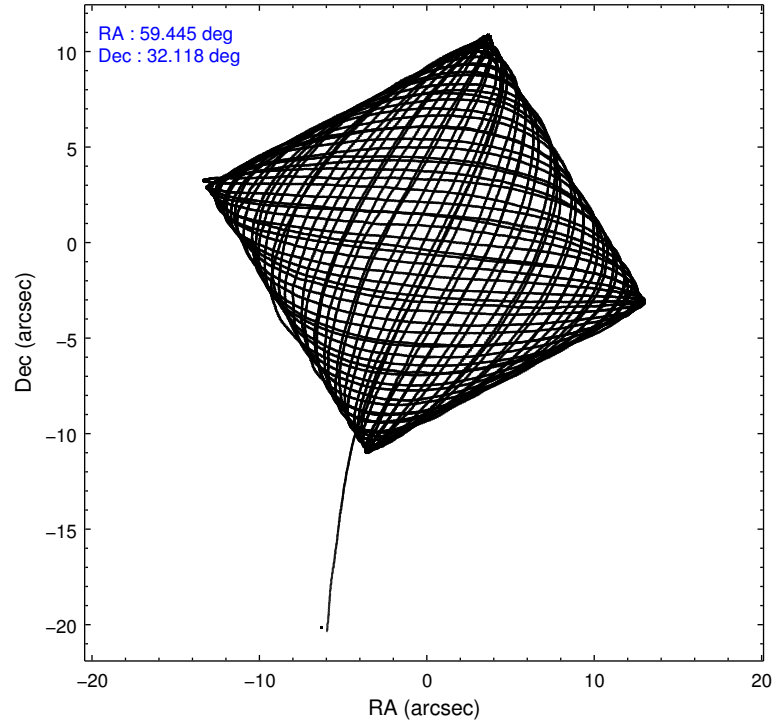
2.1.4 Events

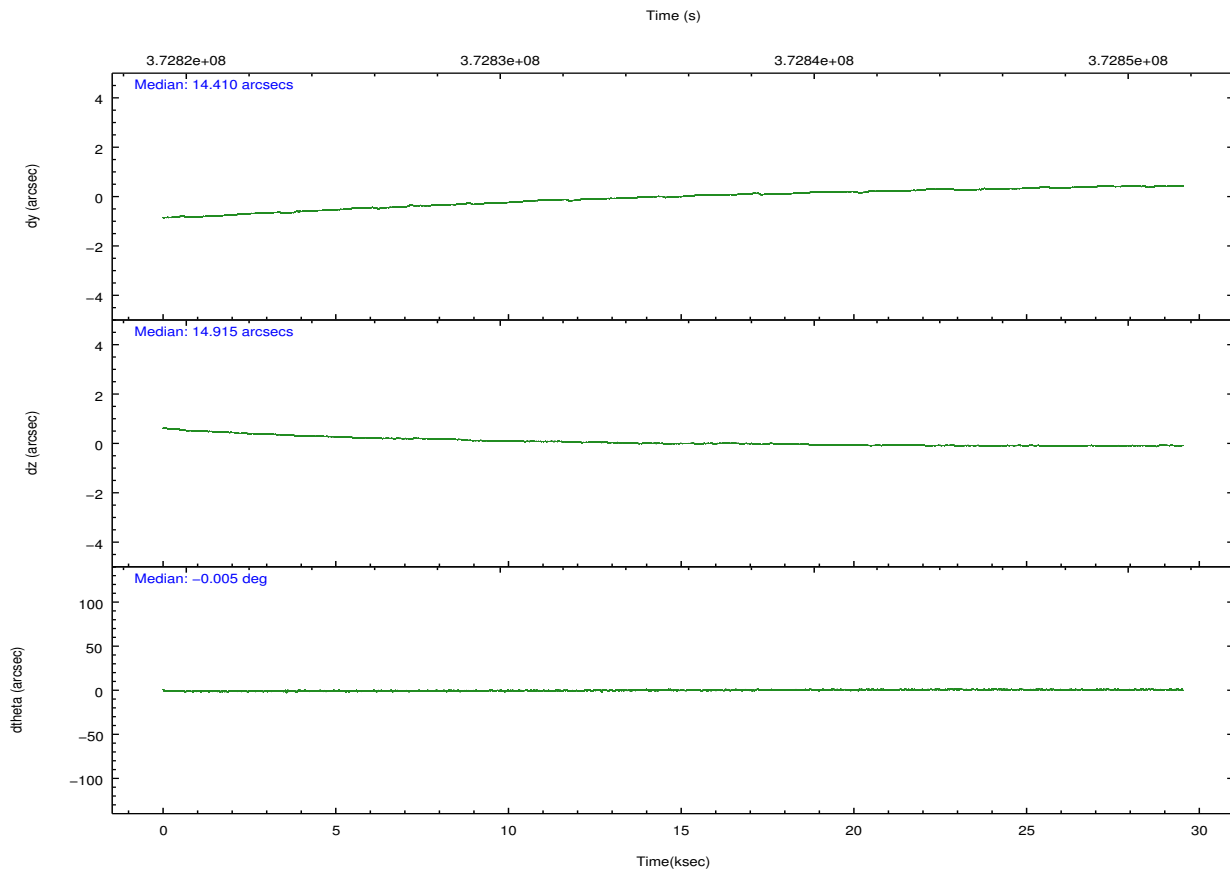
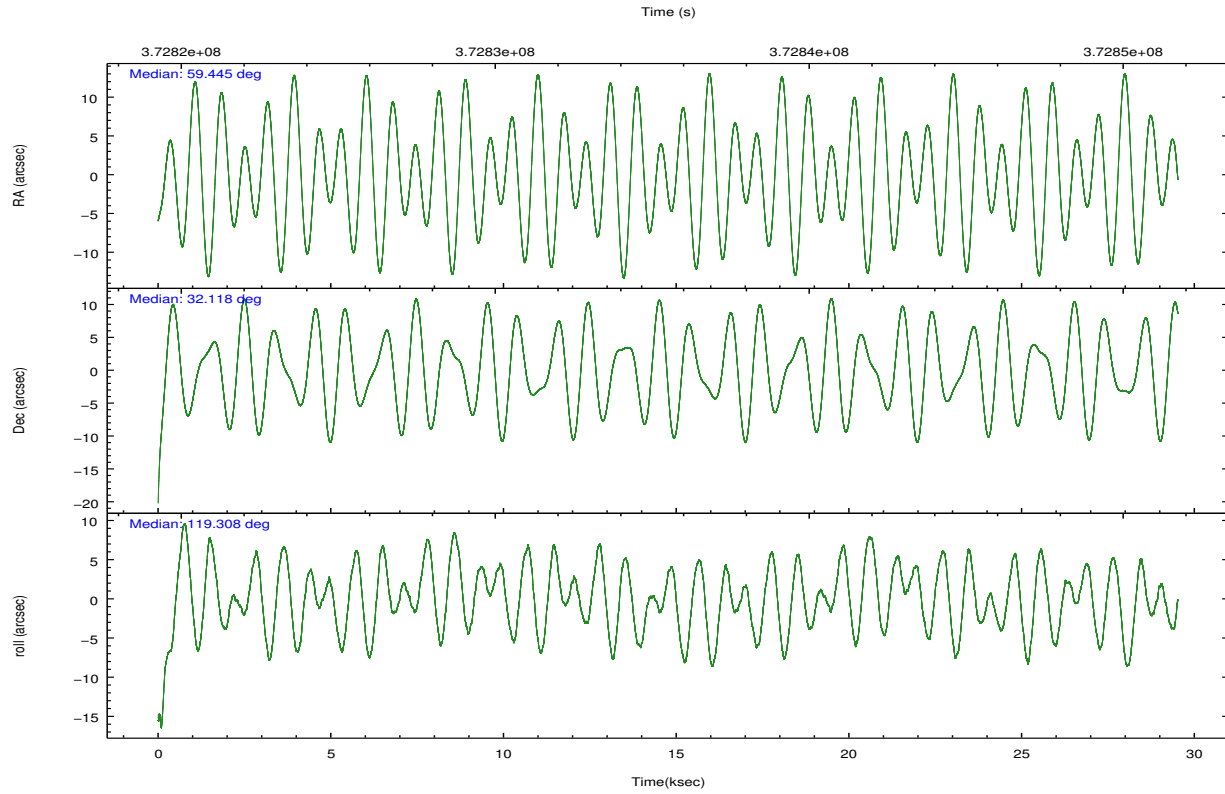
	ccd 2	ccd 3	ccd 5	ccd 6	ccd 7	ccd 8		ccd 2	ccd 3	ccd 5	ccd 6	ccd 7	ccd 8
level 1 events	257209	234028	330748	249162	240918	303767	grade 0 events	8955	8412	25608	9410	12236	23557
rejected events	233701	211883	157084	224348	125434	225720		3%	3%	7%	3%	5%	7%
rejected %	90%	90%	47%	90%	52%	74%	grade 1 events	169	144	733	140	399	277
								0%	0%	0%	0%	0%	0%
							grade 2 events	5856	4966	54948	5671	25446	19100
								2%	2%	16%	2%	10%	6%
							grade 3 events	2428	2530	6981	2656	10994	8744
								0%	1%	2%	1%	4%	2%
							grade 4 events	2568	2512	6688	2643	11006	7843
								0%	1%	2%	1%	4%	2%
							grade 5 events	7200	8614	26834	8672	25727	13292
								2%	3%	8%	3%	10%	4%
							grade 6 events	4347	4367	84244	5115	59069	21370
								1%	1%	25%	2%	24%	7%
							grade 7 events	225686	202483	124712	214855	96041	209584
								87%	86%	37%	86%	39%	68%

2.2 Compared Parameters

Parameter	Planned	Actual	Parameter	Planned	Actual
Instrument	ACIS	ACIS	Obspar format version number	7	7
Detector	ACIS-235678	ACIS-235678	Obspar file type	PREDICTED	ACTUAL
Grating	NONE	NONE	Obspar update status	NONE	UPDATED
Data mode	VFAINT	VFAINT	CCD I0 on	N	N
Observation mode	POINTING	POINTING	CCD I1 on	N	N
[deg] Pointing RA	59.473014	59.44503238098781	CCD I2 on	Y	Y
[deg] Pointing Dec	32.104596	32.1182361394087	CCD I3 on	Y	Y
[deg] Pointing Roll	119.139352	119.310852845999	CCD S0 on	N	N
[mm] SIM focus pos	-0.684267	-0.6828225247311905	CCD S1 on	Y	Y
[mm] SIM defocus	0	0.001444936568705701	CCD S2 on	Y	Y
[mm] SIM translation stage pos	-190.132523	-190.1400660498719	CCD S3 on	Y	Y
[mm] SIM translation stage offset	0	0.00754346686406393	CCD S4 on	O1	Y
[s] Observation start time (MET)	372820907.184000	372819427.46547	CCD S5 on	N	N
Observation start date	2009-10-25T01:20:41	2009-10-25T00:57:07	Number of optional ACIS chips dropped	0	0
[s] Observation end time (MET)	372850263.184000	372850477.79203	On-chip summing requested	N	N
Observation end date	2009-10-25T09:29:57	2009-10-25T09:34:37	Subarray requested	NONE	NONE
Read mode	TIMED	TIMED	Alternating exposures requested	N	N
			[s] Primary exposure time	0.000000	3.2

2.3 Aspect



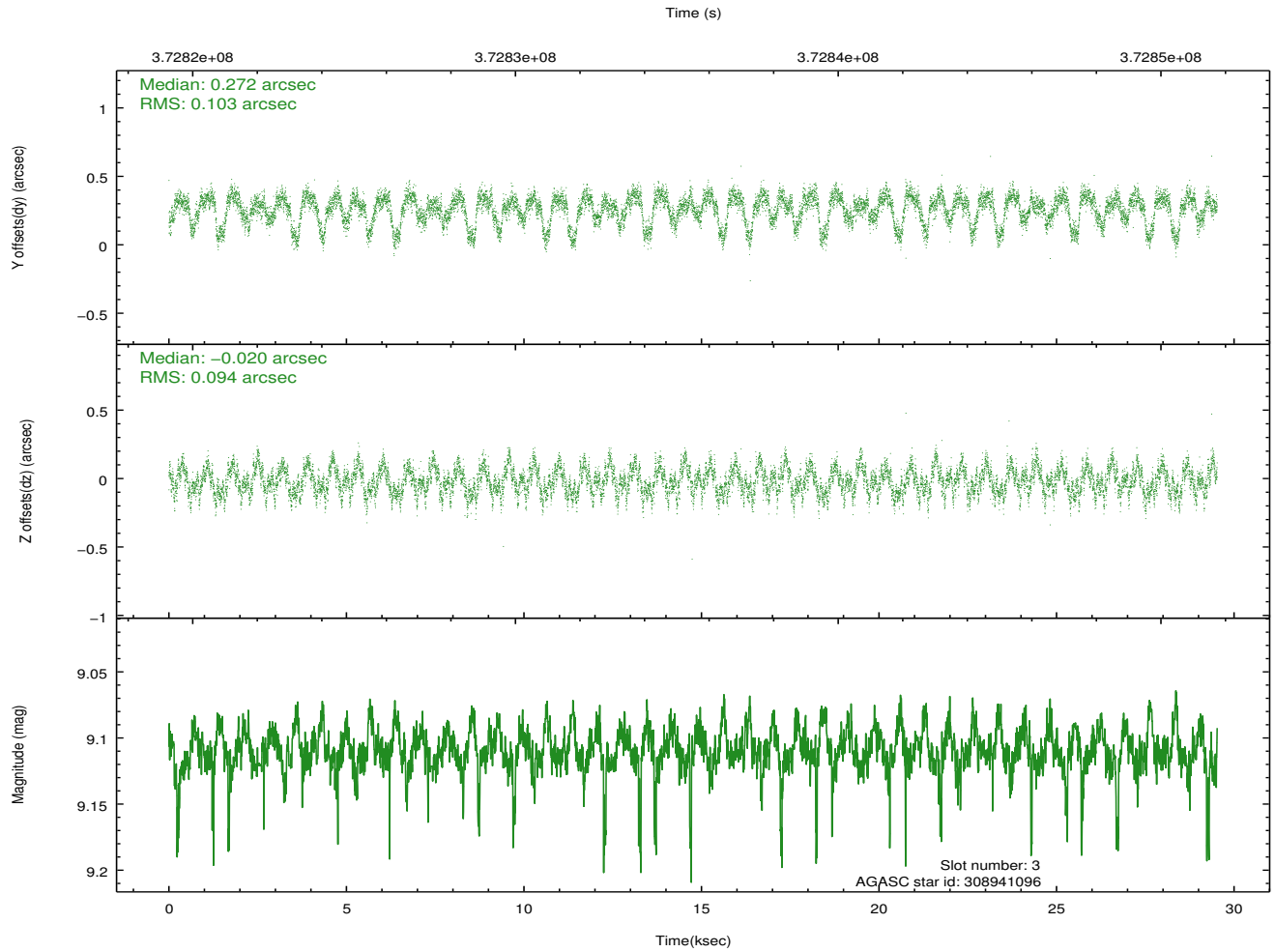
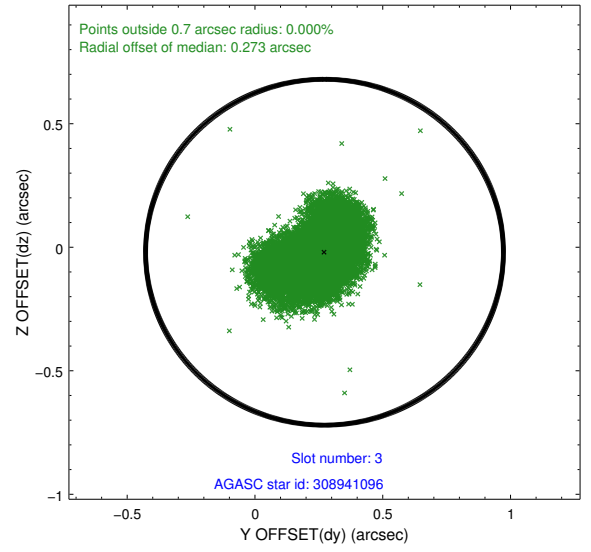
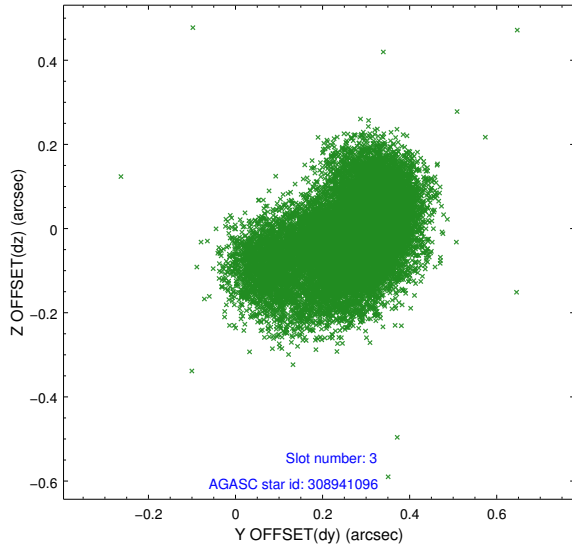


Slot Statistics

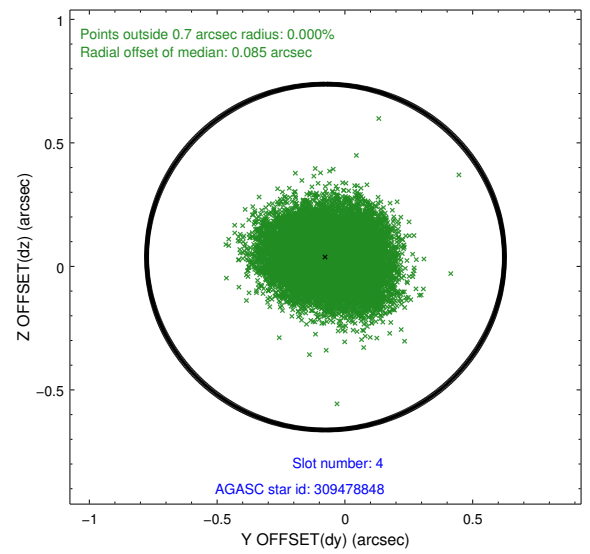
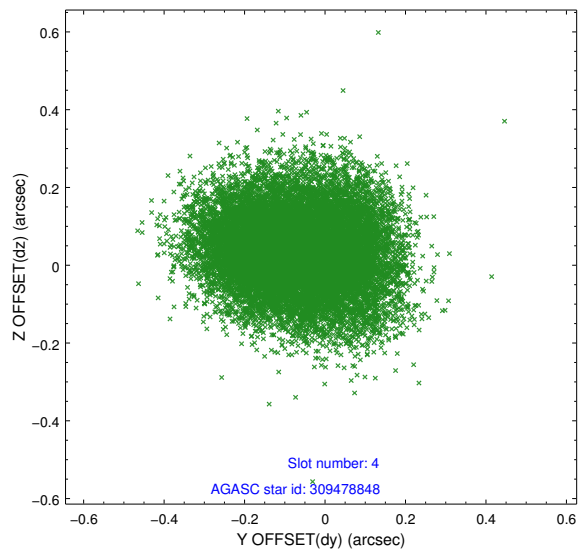
slot	status	id	mag	n_pts	med_dy	med_dz	dr1	dr2	ra	dec	mean_y	mean_z
0	FID	ACIS-S-2	6.92	7201	-0.079	-0.025	0.014	0.023	0.000000	0.000000	-767.34	-1736.40
1	FID	ACIS-S-4	7.01	7201	0.201	0.045	0.009	0.017	0.000000	0.000000	2146.15	172.11
2	FID	ACIS-S-5	7.03	7201	-0.151	-0.012	0.013	0.020	0.000000	0.000000	-1820.18	165.76
3	GUIDE	308941096	9.11	14382	0.272	-0.020	0.148	0.241	60.003174	31.773983	-1825.57	-839.48
4	GUIDE	309478848	9.96	14321	-0.076	0.038	0.166	0.260	59.804101	32.712833	1425.80	-1942.63
5	GUIDE	309478928	8.94	14392	-0.089	0.037	0.095	0.152	59.464096	32.635124	1681.88	-906.16
6	GUIDE	309482592	9.75	14376	-0.111	-0.047	0.128	0.208	59.746979	32.370622	432.32	-1194.27
7	GUIDE	309482648	8.32	14397	0.026	-0.001	0.079	0.130	59.776021	32.011778	-740.73	-645.76

2.4 Star Slots

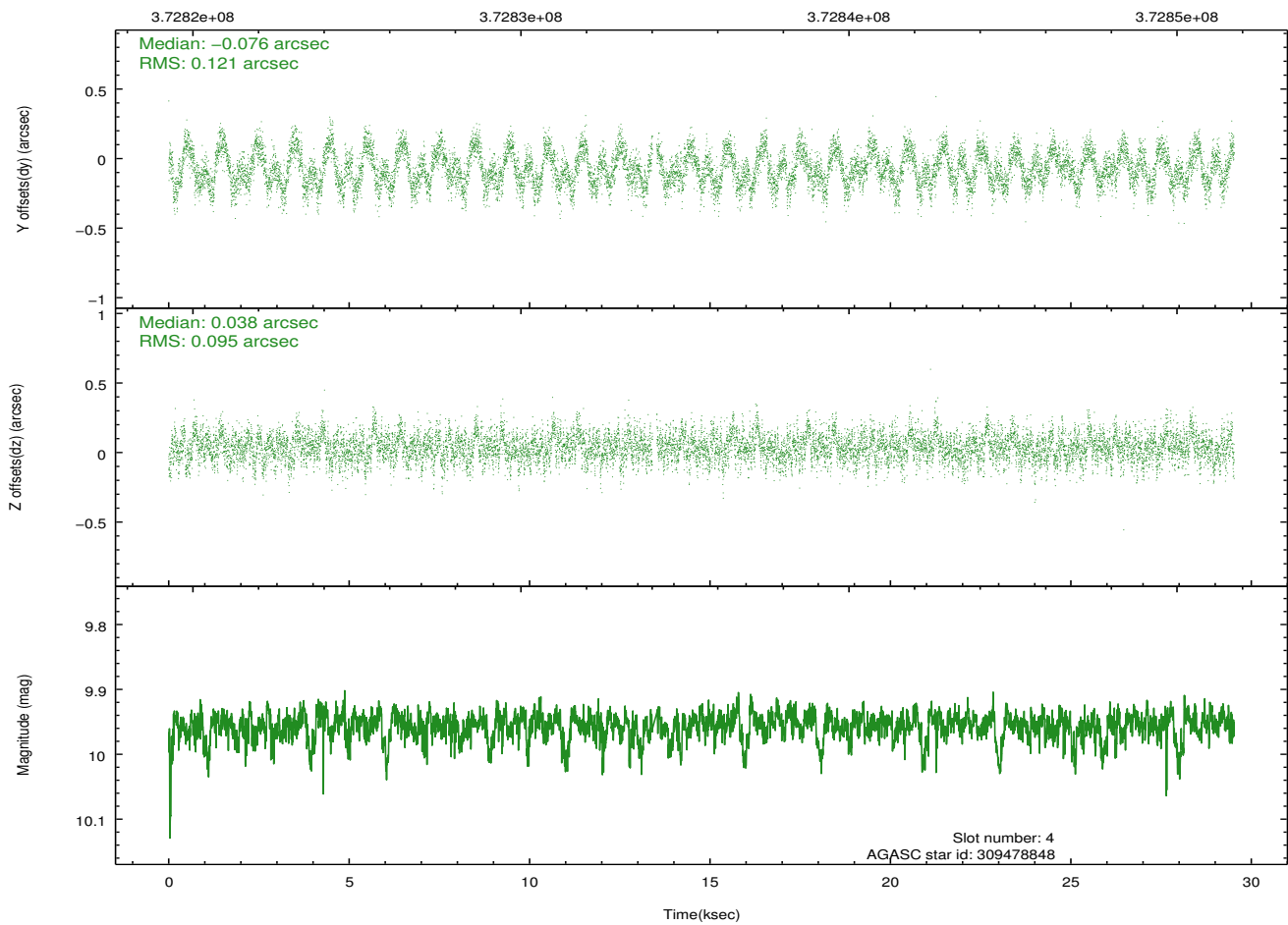
2.4.1 Slot 3



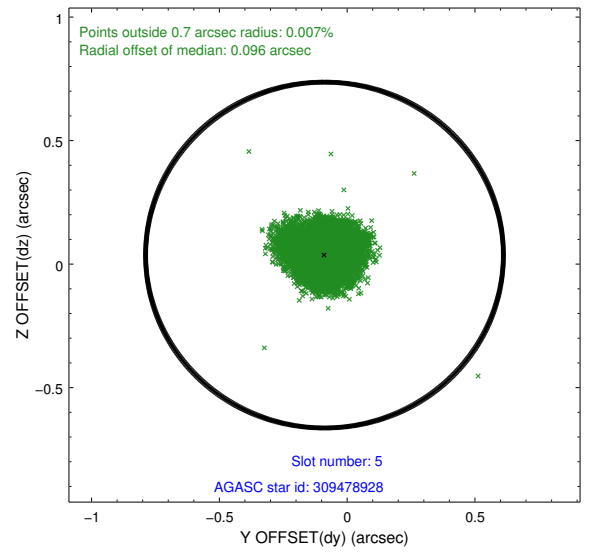
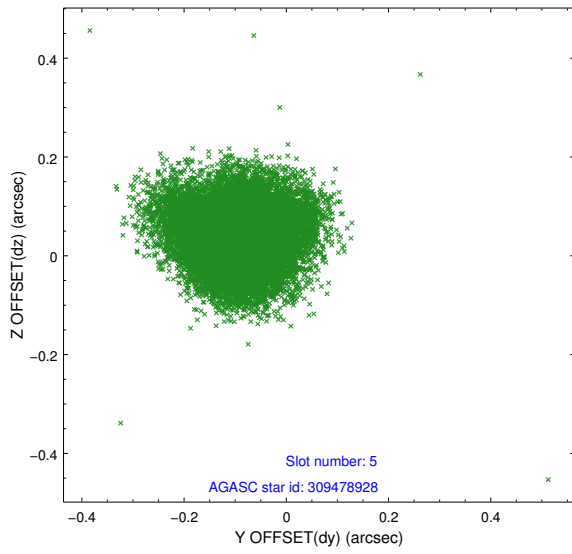
2.4.2 Slot 4



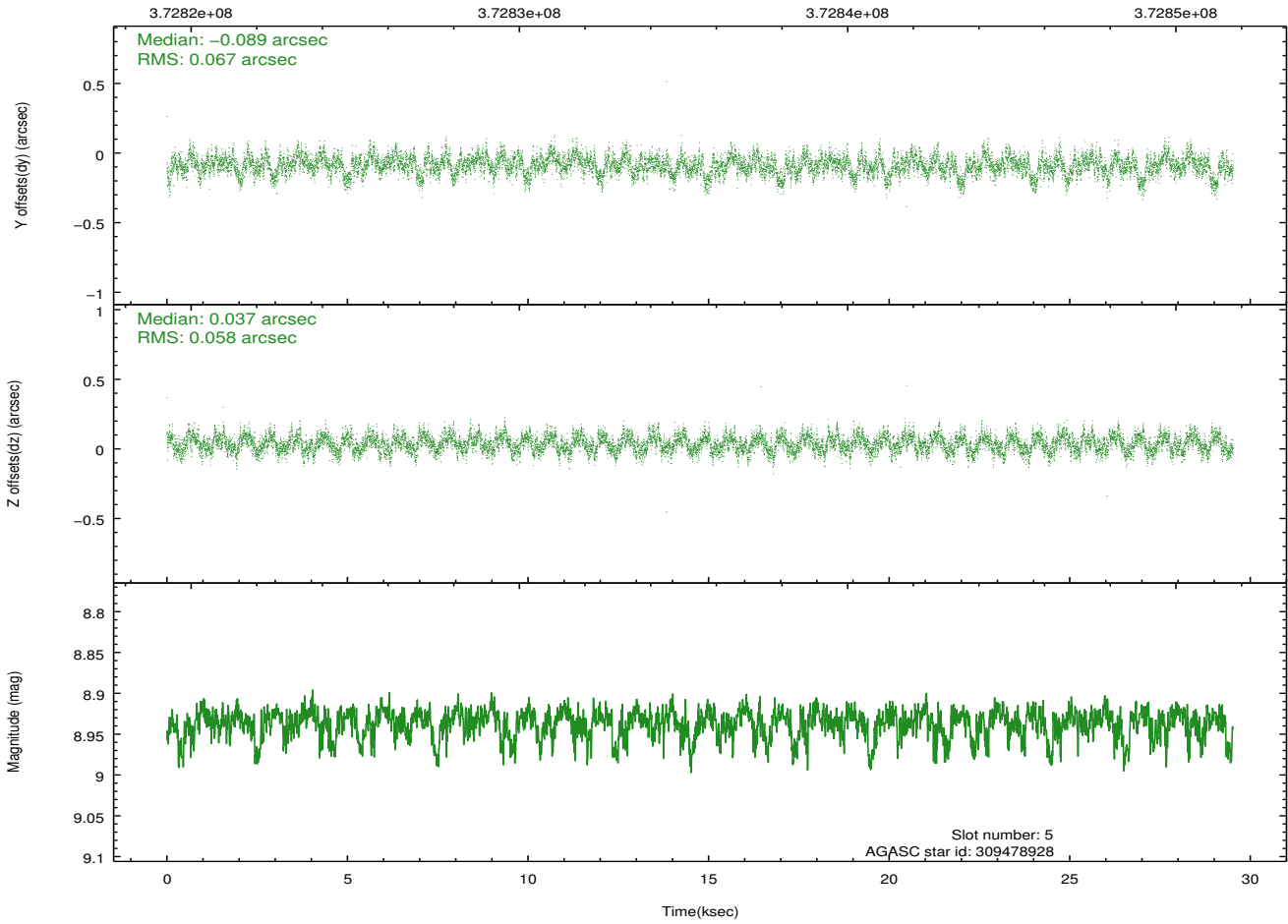
Time (s)



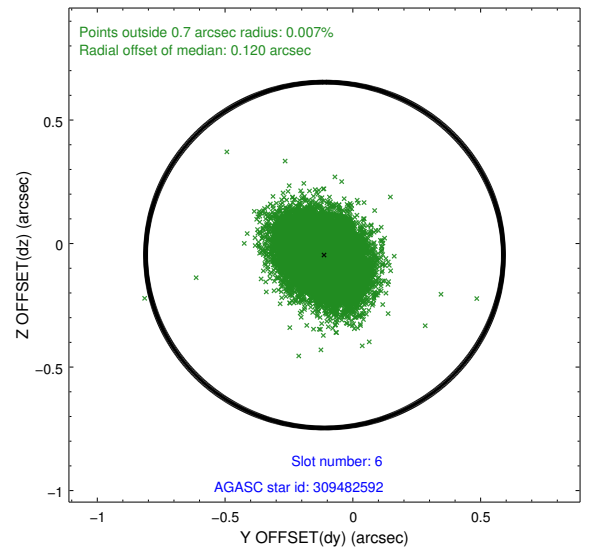
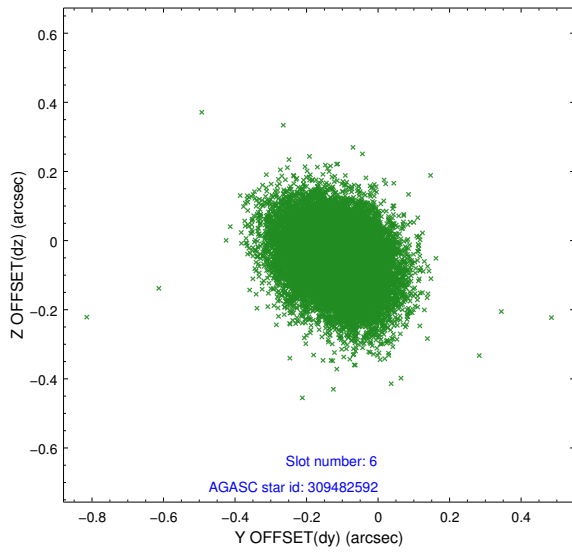
2.4.3 Slot 5



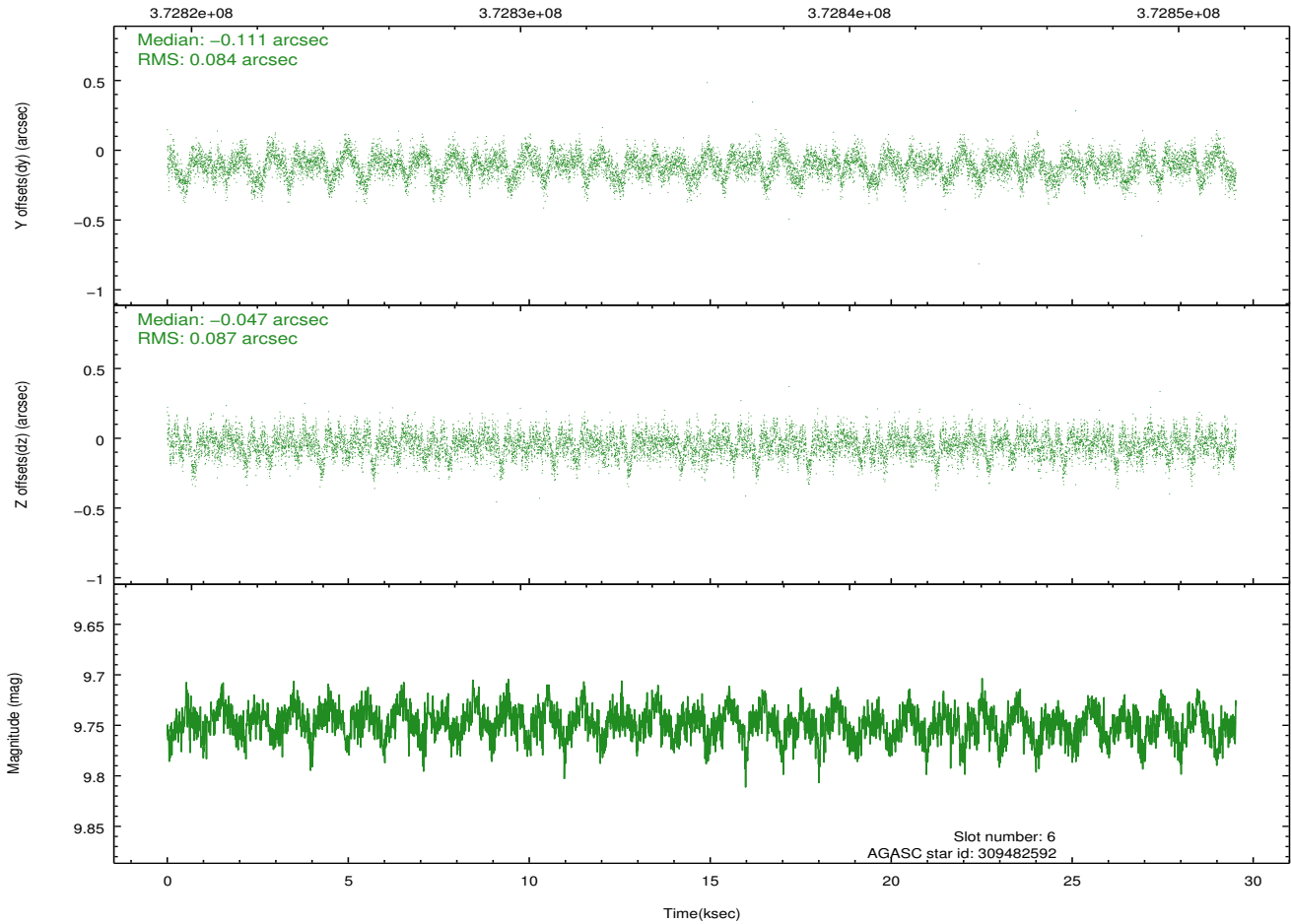
Time (s)



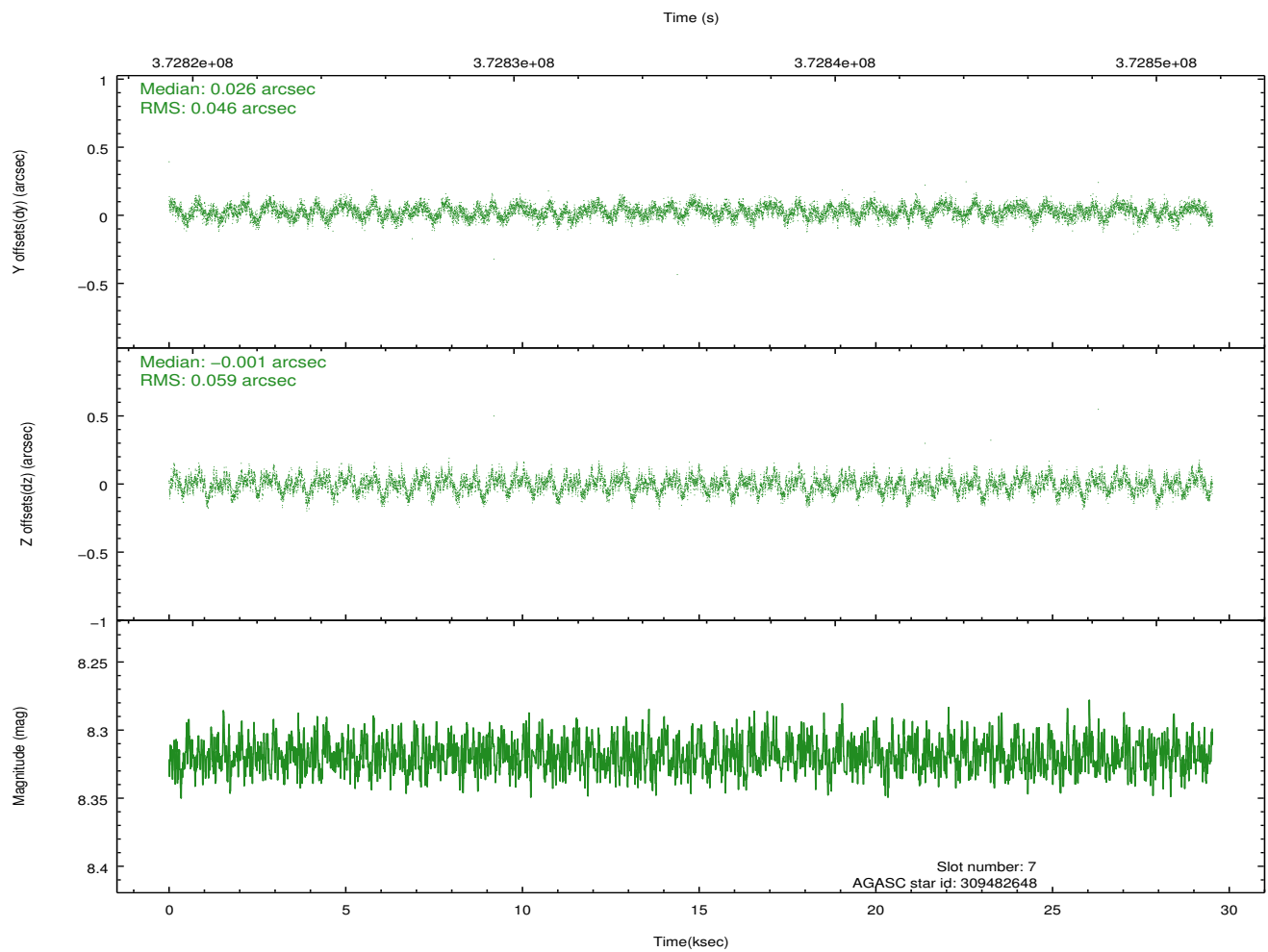
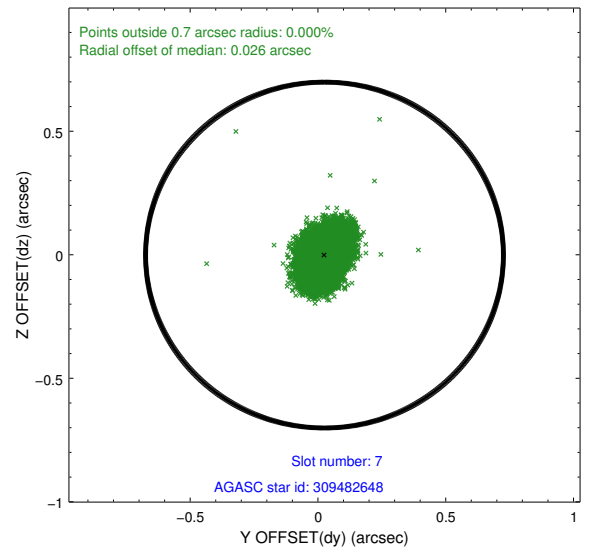
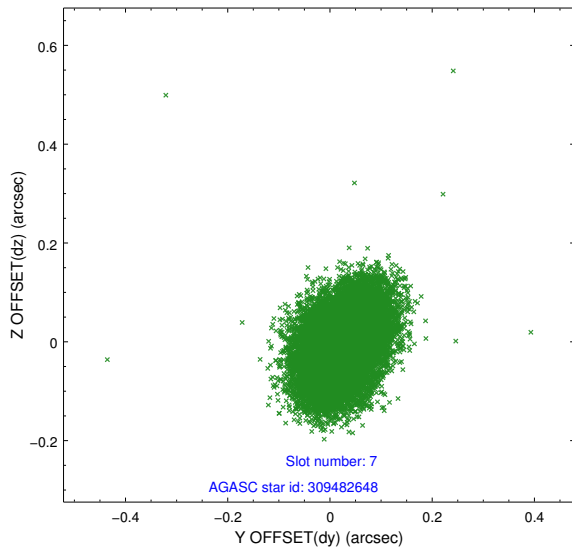
2.4.4 Slot 6



Time (s)

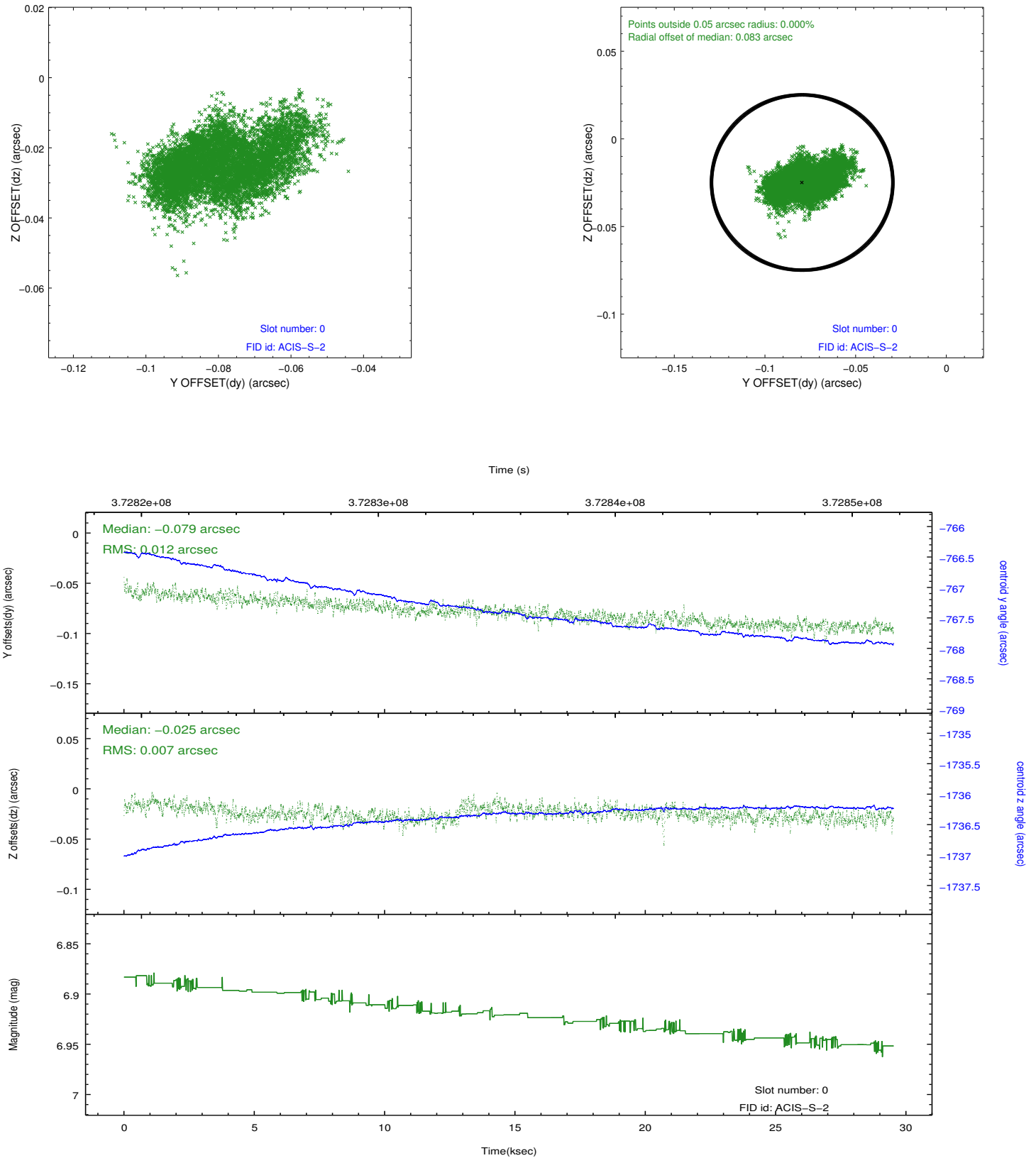


2.4.5 Slot 7

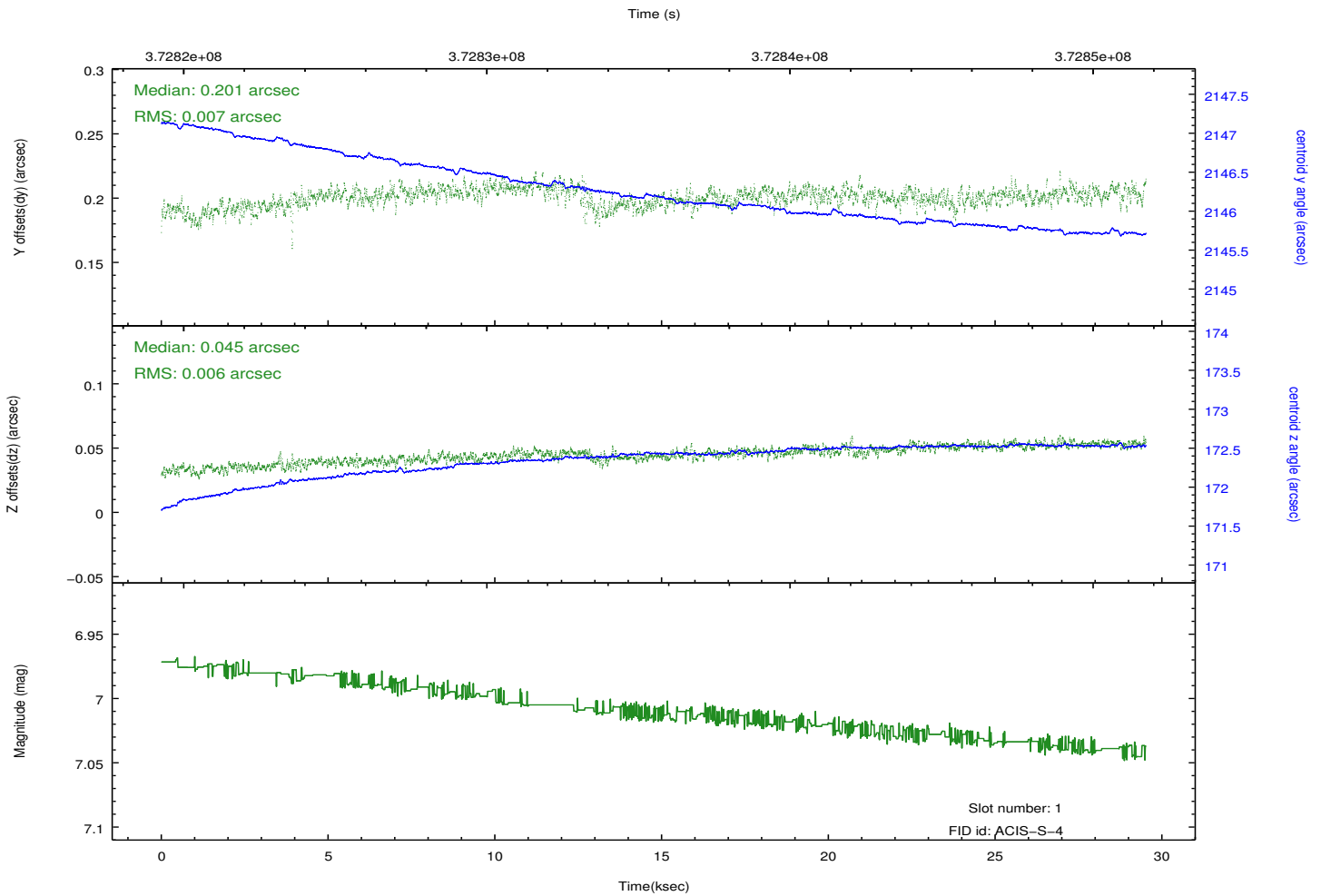
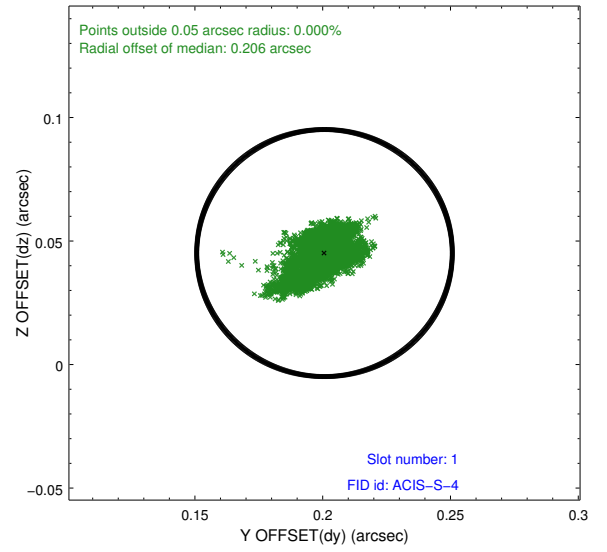
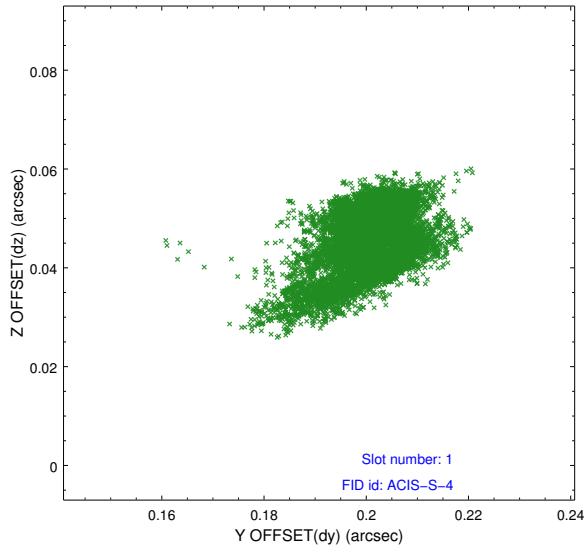


2.5 FID Slots

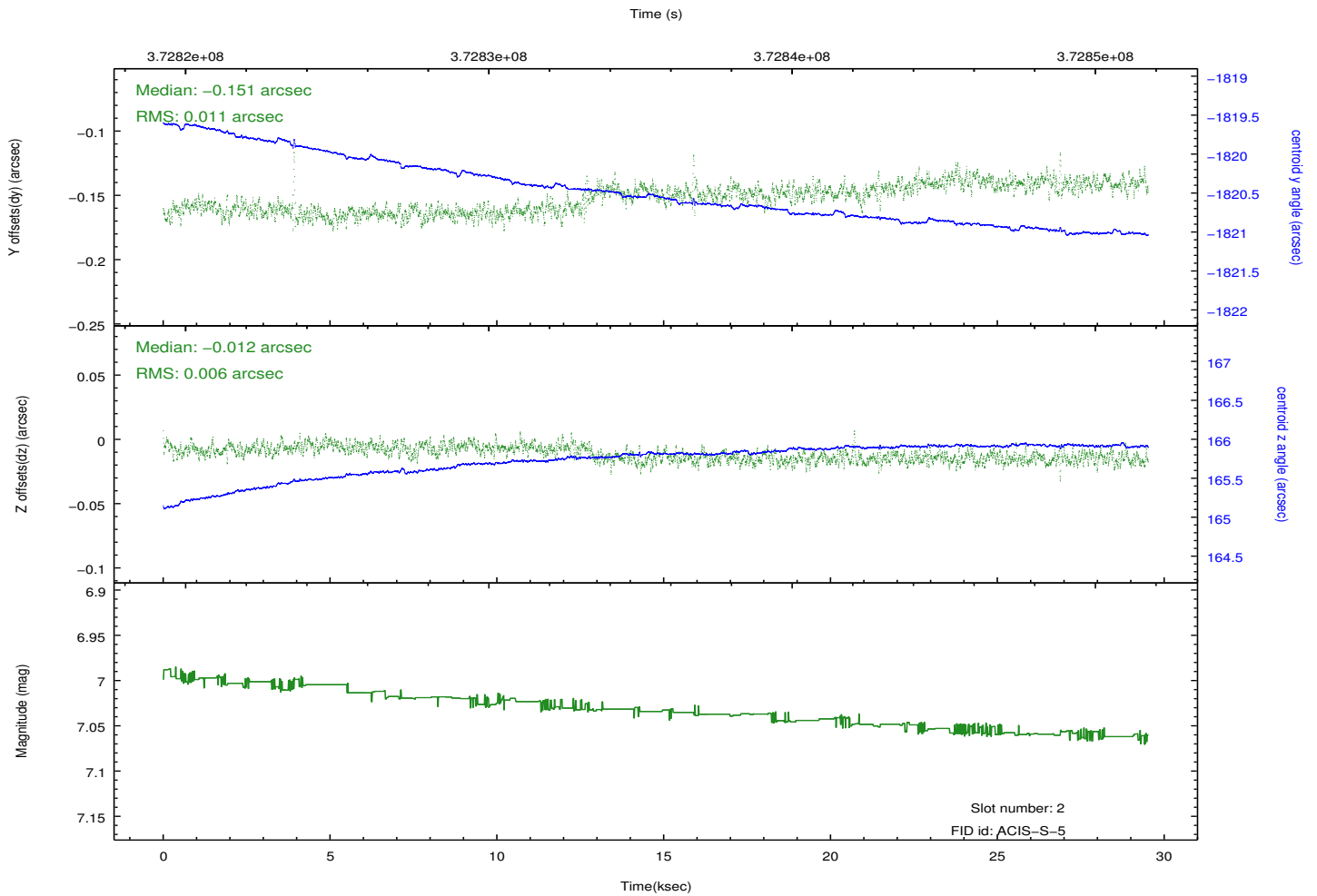
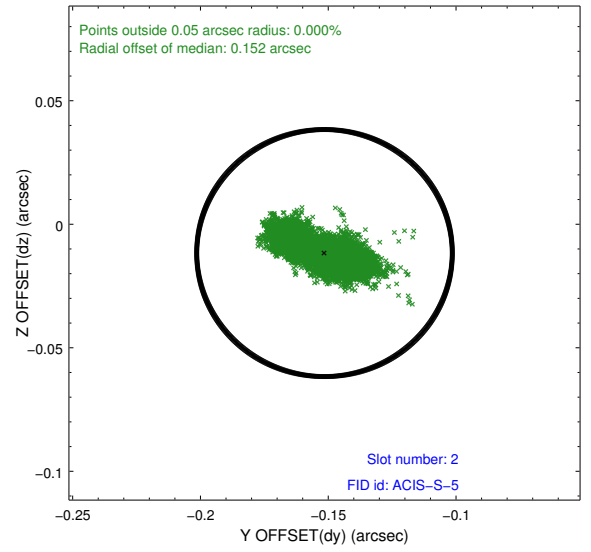
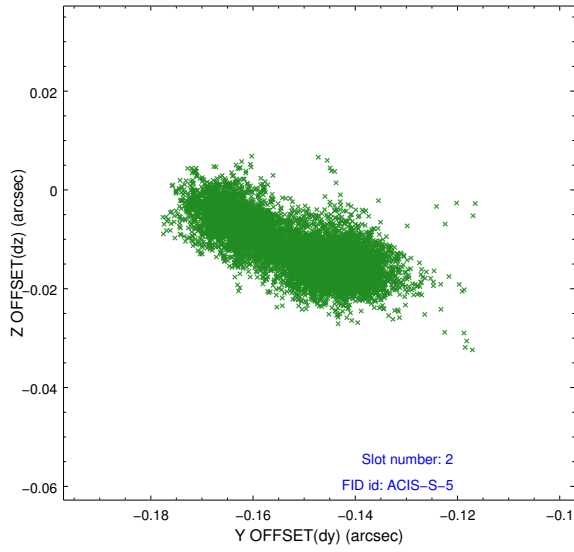
2.5.1 Slot 0



2.5.2 Slot 1



2.5.3 Slot 2



A Summary

A.1 Status

V&V Scientist	Jen Lauer
V&V Date (YYYY-MM-DD)	2012.06.19
V&V Edition	1
V&V Disposition and Status	OK
V&V Charge Time	29.519999890089

A.2 Comments

Joint proposal with NOAO.