

# V&V Reference Report

## L2 ASCDS Version : 8.4.5

Observation 12018 - L2 Version 2  
Chandra X-Ray Center

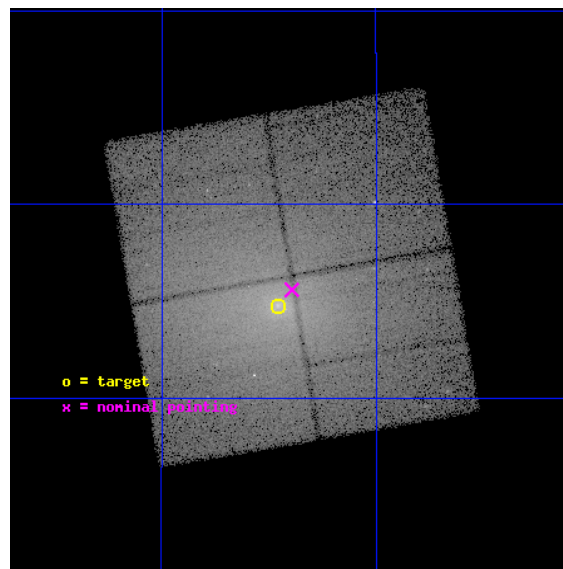
L2 Processing Date : Jun 16 2012

## Contents

<b>1</b>	<b>Front</b>	<b>2</b>
<b>2</b>	<b>OBI</b>	<b>3</b>
2.1	OBI . . . . .	3
2.1.1	Images . . . . .	3
2.1.2	Bias . . . . .	3
2.1.3	Parameters . . . . .	4
2.1.4	Events . . . . .	4
2.2	Compared Parameters . . . . .	5
2.3	Aspect . . . . .	6
2.4	Star Slots . . . . .	9
2.4.1	Slot 3 . . . . .	9
2.4.2	Slot 4 . . . . .	10
2.4.3	Slot 5 . . . . .	11
2.4.4	Slot 6 . . . . .	12
2.4.5	Slot 7 . . . . .	13
2.5	FID Slots . . . . .	14
2.5.1	Slot 0 . . . . .	14
2.5.2	Slot 1 . . . . .	15
2.5.3	Slot 2 . . . . .	16
<b>A</b>	<b>Summary</b>	<b>17</b>
A.1	Status . . . . .	17
A.2	Comments . . . . .	17

# 1 Front

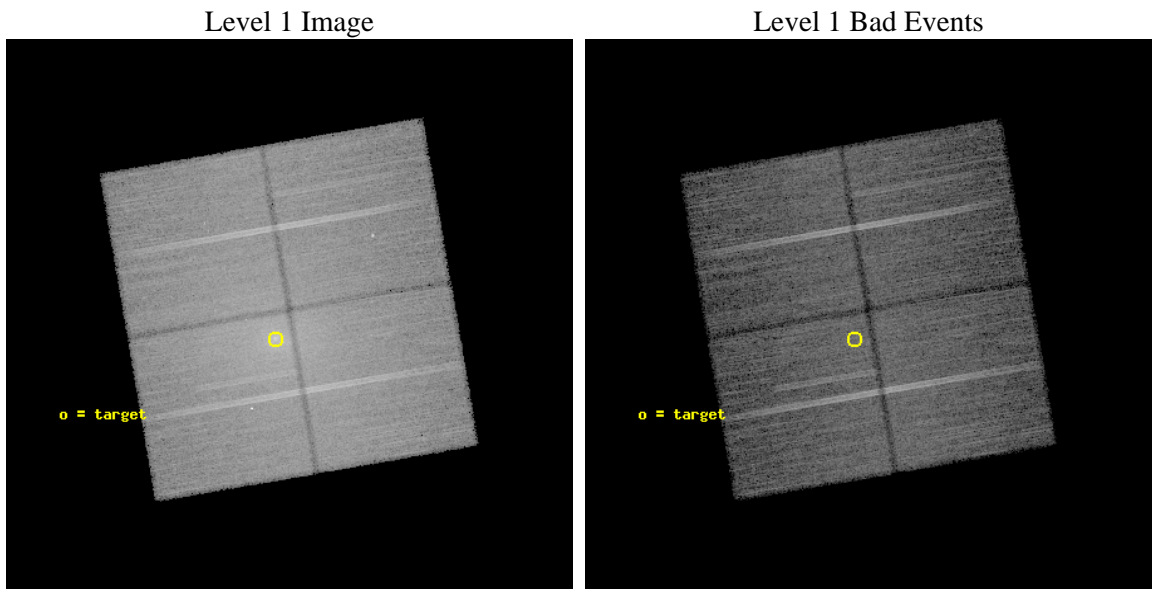
seq_num	800857	Sequence number
obs_id	12018	Observation id
title	Testing AGN feedback with AWM7	Proposal title
observer	Dr Jeremy Sanders	Principal investigator
object	AWM7	Source name
dtcycle	0	&#160
cycle	P	events from which exps? Prim/Second/Both
ra_targ	43.614583	Observer's specified target RA [deg]
dec_targ	41.579167	Observer's specified target Dec [deg]
ra_nom	43.598387785492	Nominal RA [deg]
dec_nom	41.593198739081	Nominal Dec [deg]
roll_nom	170.21943179475	Nominal Roll [deg]
revision	2	Processing version of data
ontime	27177.659208775	Sum of GTIs [s]
livetime	26822.56308331	Livetime [s]
ontime0	27180.800209045	Sum of GTIs [s]
ontime1	27174.518228412	Sum of GTIs [s]
ontime2	27177.659218669	Sum of GTIs [s]
ontime3	27177.659208775	Sum of GTIs [s]
l2events	339145	Number of level 2 events



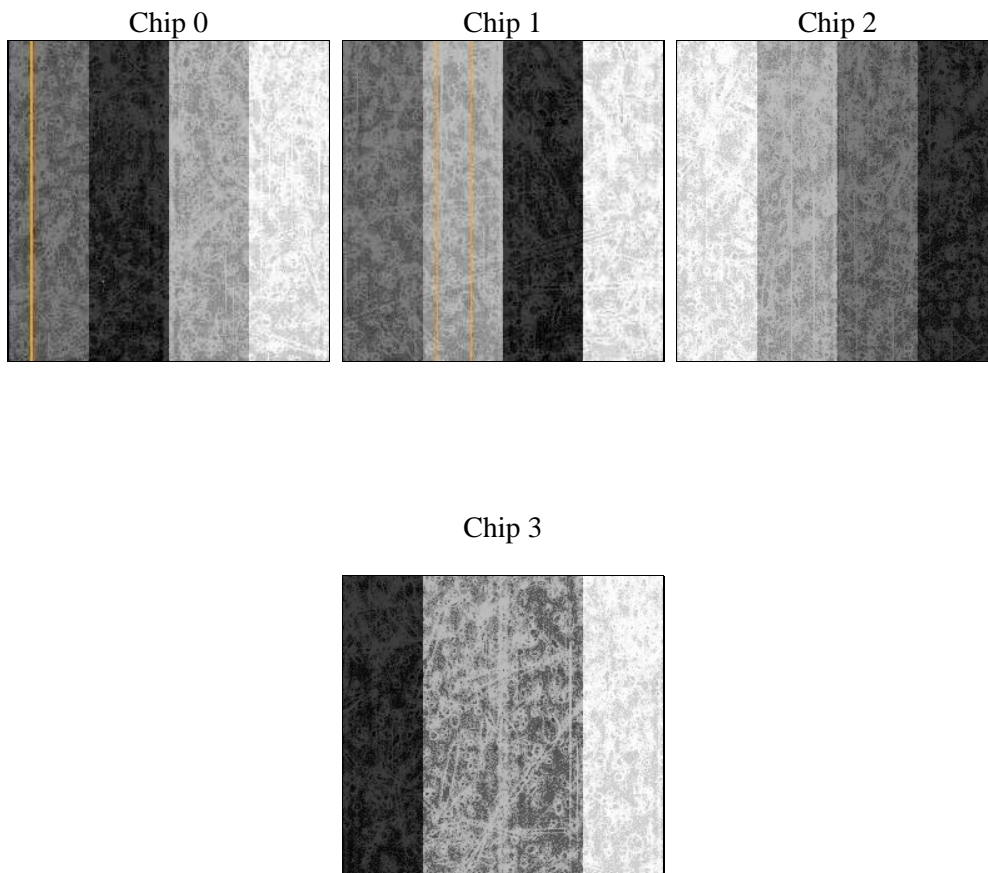
## 2 OBI

### 2.1 OBI

#### 2.1.1 Images



#### 2.1.2 Bias



### 2.1.3 Parameters

obi_num	0	Obi number	sched_exp_time	27000.000000	[s] Scheduled observation exposure time
ascdsver	8.4.5	Processing system revision	ontime	27177.659208775	Sum of GTIs [s]
caldbver	4.4.10	&#160	ontime0	27180.800209045	Sum of GTIs [s]
date	2012-06-16T03:34:23	Date and time of file creation	ontime1	27174.518228412	Sum of GTIs [s]
revision	2	Processing version of data	ontime2	27177.659218669	Sum of GTIs [s]
			ontime3	27177.659208775	Sum of GTIs [s]
			l1events	1253977	Number of level 1 events

### 2.1.4 Events

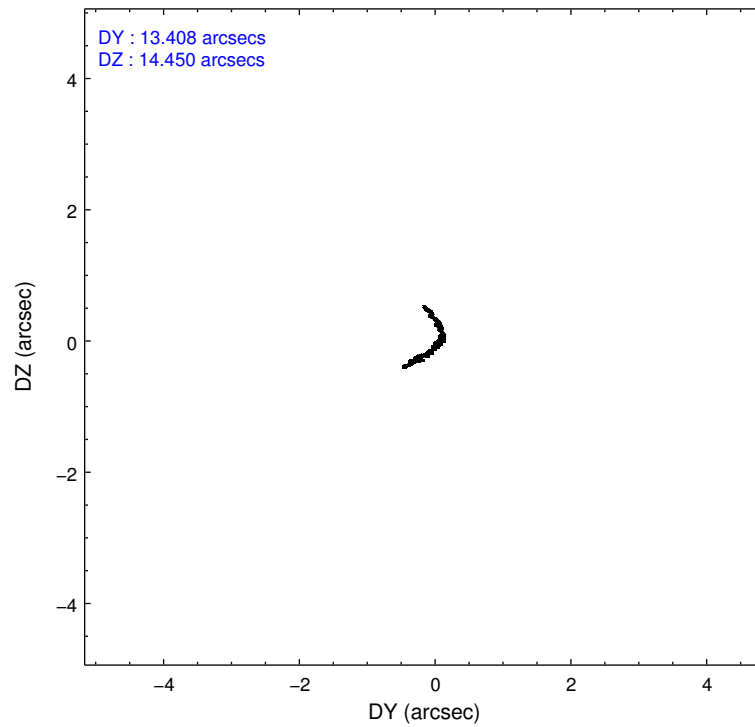
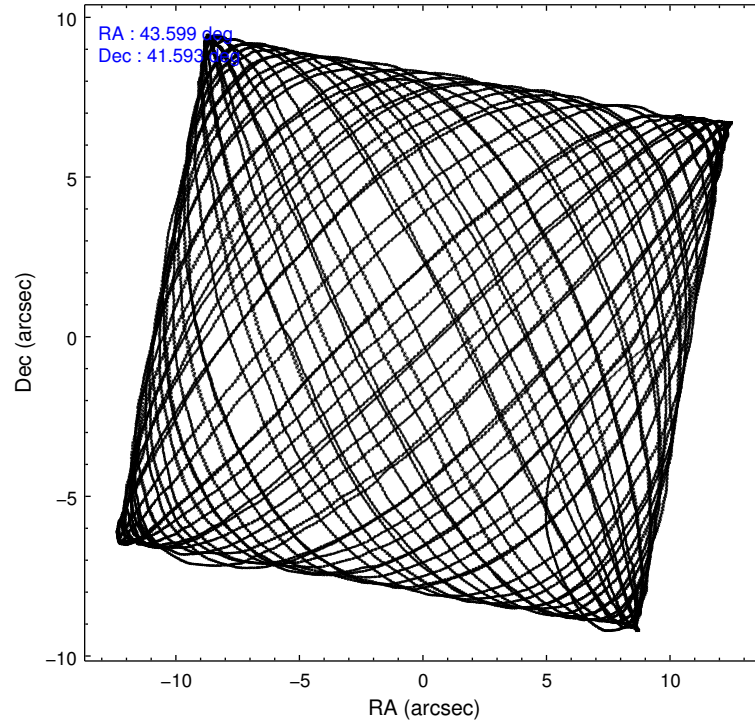
	ccd 0	ccd 1	ccd 2	ccd 3
level 1 events	265832	300045	325426	362674
rejected events	207600	211250	235715	229585
rejected %	78%	70%	72%	63%

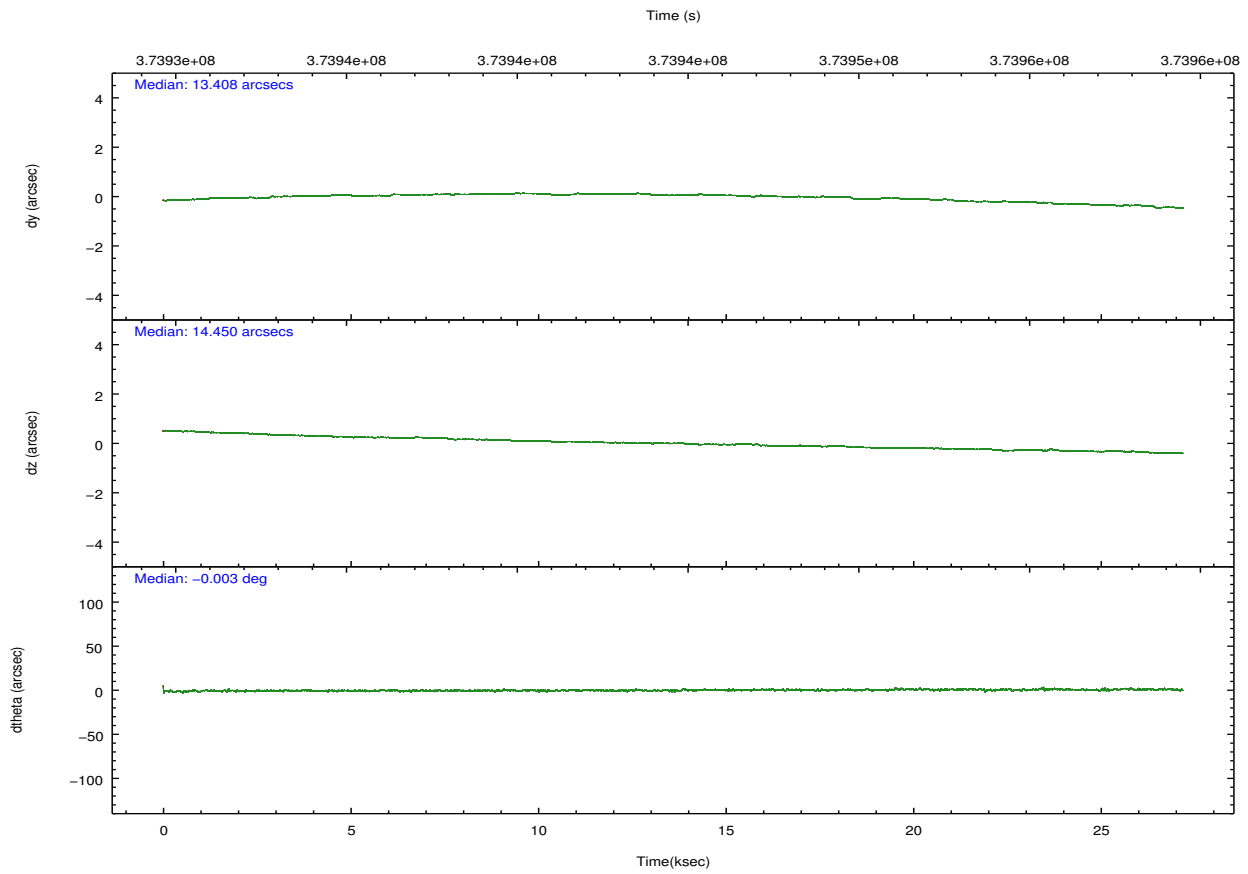
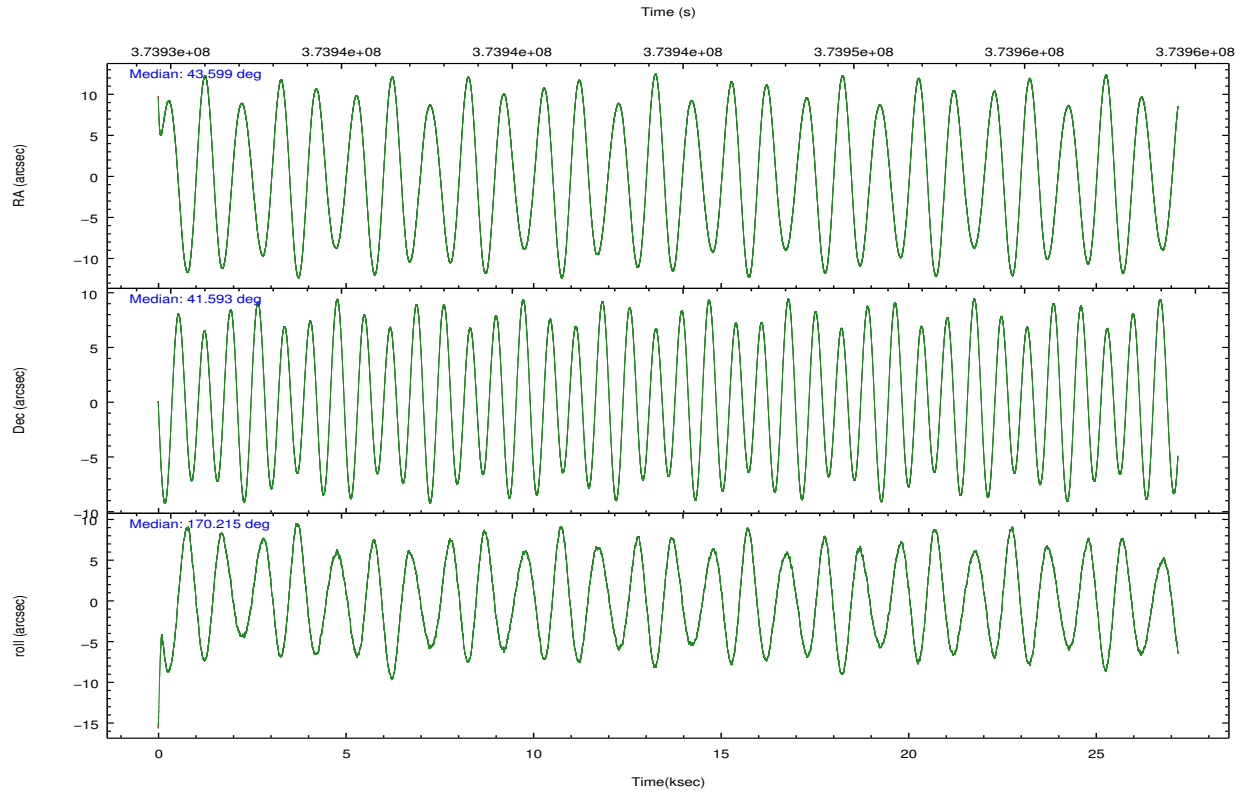
	ccd 0	ccd 1	ccd 2	ccd 3
grade 0 events	36818	60719	63670	99473
	13%	20%	19%	27%
grade 1 events	325	420	532	777
	0%	0%	0%	0%
grade 2 events	9935	13231	12462	16252
	3%	4%	3%	4%
grade 3 events	3740	4796	4629	6055
	1%	1%	1%	1%
grade 4 events	3542	4767	4693	5921
	1%	1%	1%	1%
grade 5 events	9298	10140	8911	11216
	3%	3%	2%	3%
grade 6 events	5802	7347	6082	7633
	2%	2%	1%	2%
grade 7 events	196372	198625	224447	215347
	73%	66%	68%	59%

## 2.2 Compared Parameters

Parameter	Planned	Actual	Parameter	Planned	Actual
Instrument	ACIS	ACIS	Obspar format version number	7	7
Detector	ACIS-0123	ACIS-0123	Obspar file type	PREDICTED	ACTUAL
Grating	NONE	NONE	Obspar update status	NONE	UPDATED
Data mode	VFAINT	VFAINT	Number of optional ACIS chips dropped	0	0
Observation mode	POINTING	POINTING	On-chip summing requested	N	N
[deg] Pointing RA	43.632830	43.59838778549217	Subarray requested	NONE	NONE
[deg] Pointing Dec	41.602825	41.59319873908073	Alternating exposures requested	N	N
[deg] Pointing Roll	169.987885	170.2194317947548	[s] Primary exposure time	0.000000	3.1
[mm] SIM focus pos	-0.782348	-0.7809083437167272			
[mm] SIM defocus	0	0.001439871863259334			
[mm] SIM translation stage pos	-233.592463	-233.5874344608287			
[mm] SIM translation stage offset	0	-0.005018542100998502			
[s] Observation start time (MET)	373931154.184000	373929383.62138			
Observation start date	2009-11-06T21:44:48	2009-11-06T21:16:23			
[s] Observation end time (MET)	373958154.184000	373958854.42286			
Observation end date	2009-11-07T05:14:48	2009-11-07T05:27:34			
Read mode	TIMED	TIMED			

## 2.3 Aspect



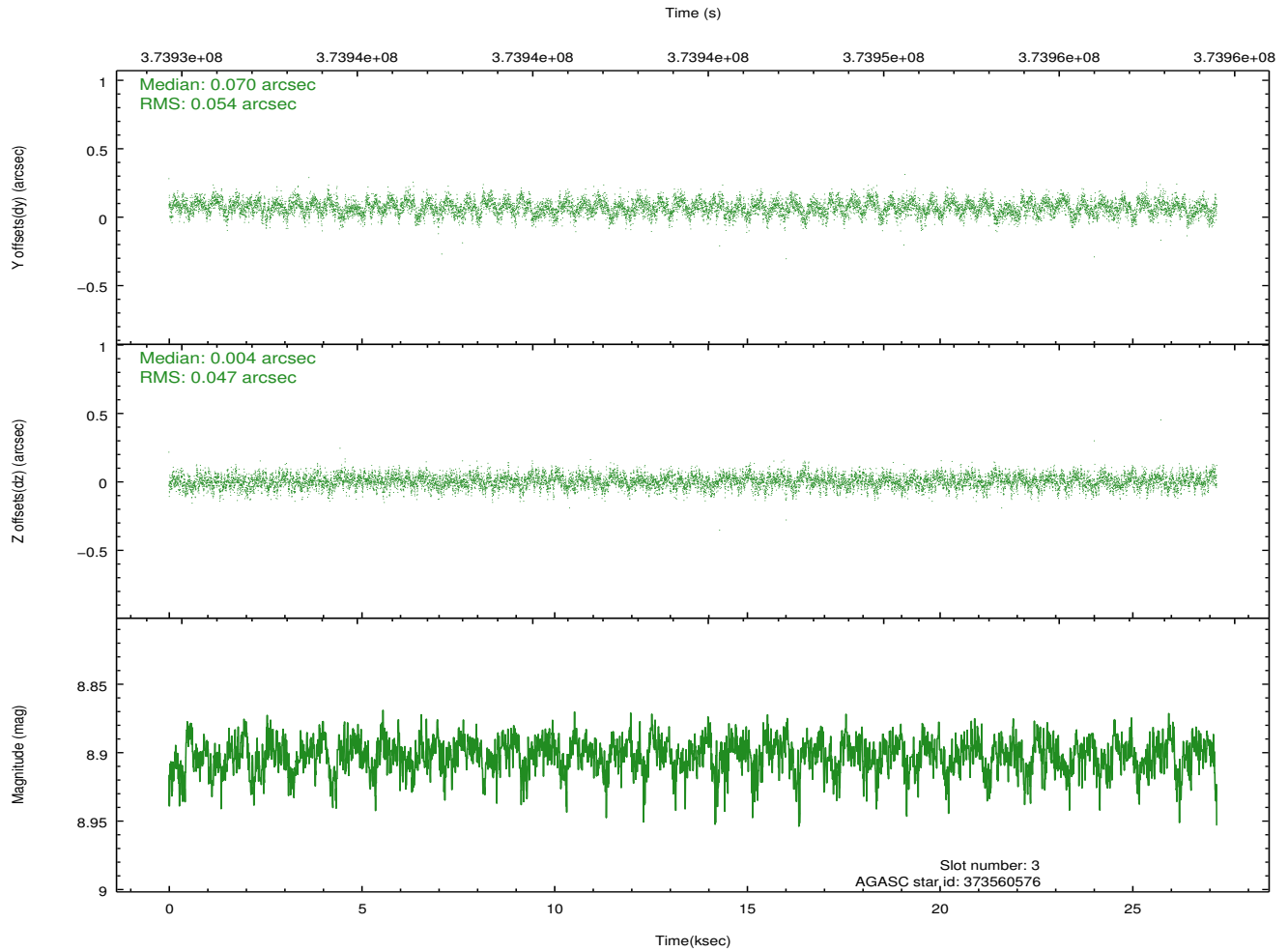
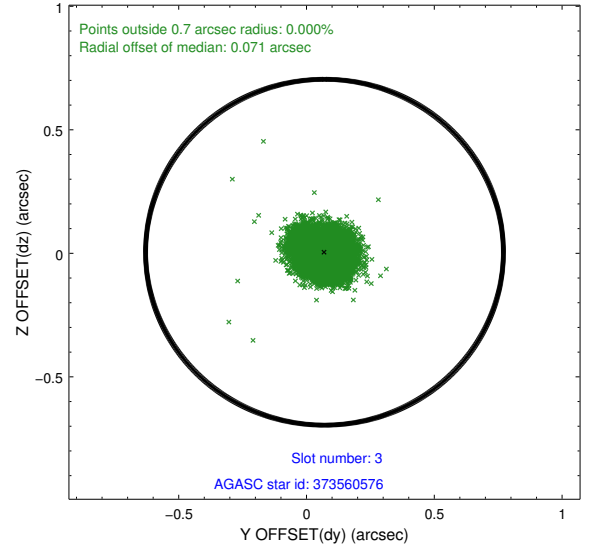
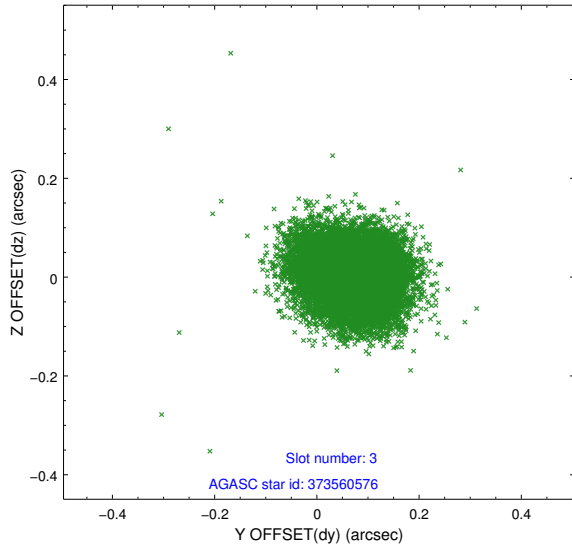


### Slot Statistics

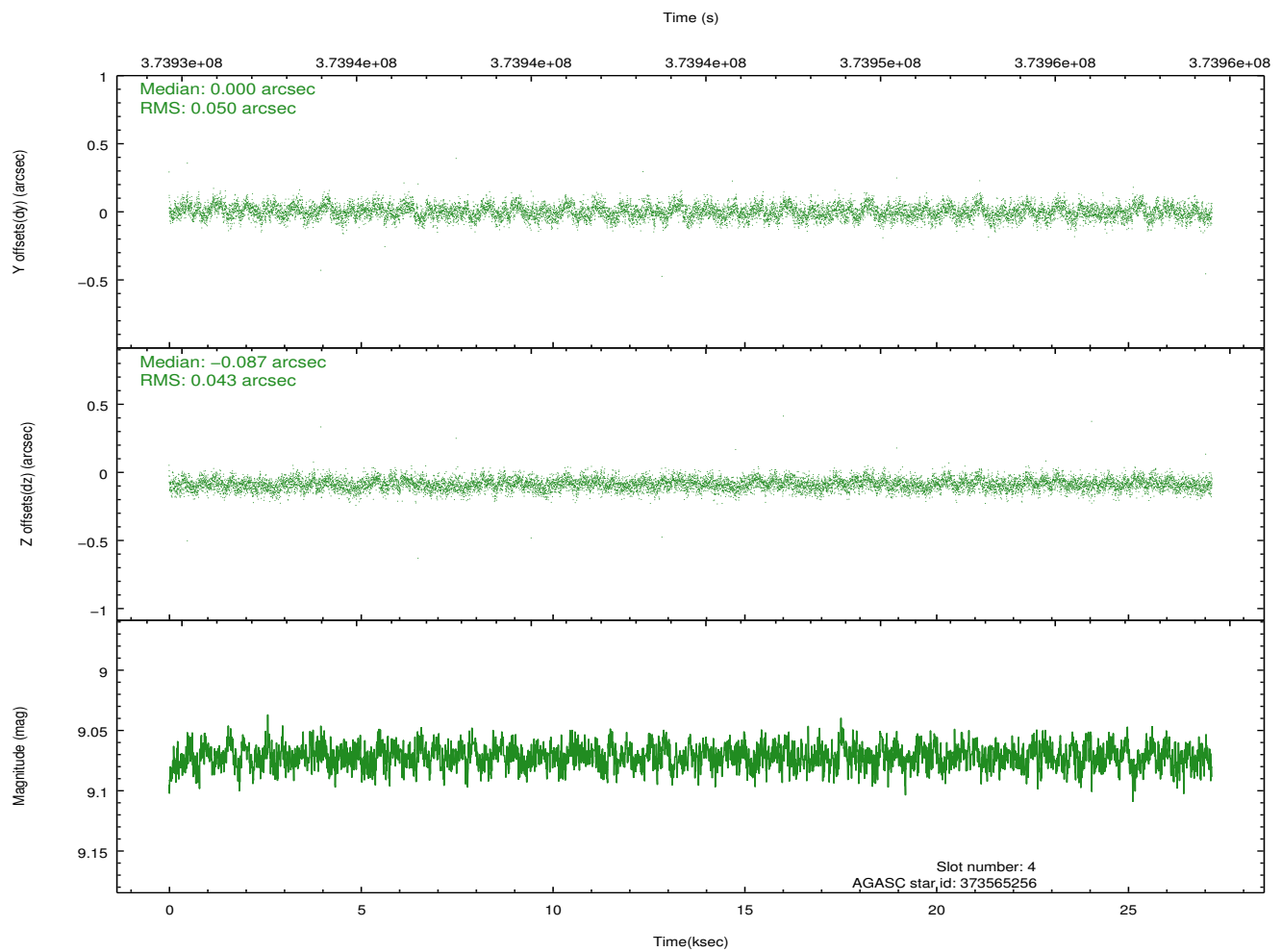
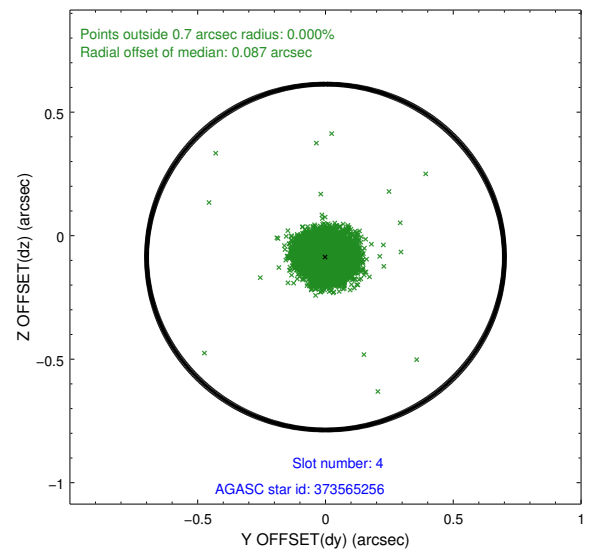
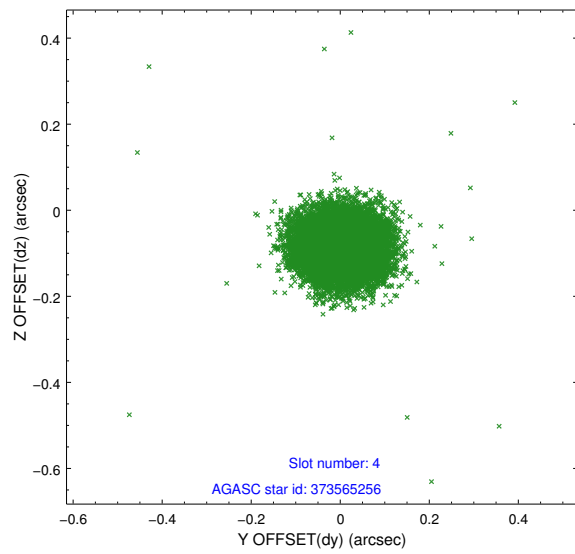
slot	status	id	mag	n_pts	med_dy	med_dz	dr1	dr2	ra	dec	mean_y	mean_z
0	FID	ACIS-I-2	6.94	6629	-0.097	-0.077	0.019	0.031	0.000000	0.000000	-768.11	-844.49
1	FID	ACIS-I-4	6.94	6632	0.234	0.080	0.012	0.018	0.000000	0.000000	2146.22	1061.81
2	FID	ACIS-I-5	7.01	6632	-0.238	0.065	0.014	0.021	0.000000	0.000000	-1821.97	1059.72
3	GUIDE	373560576	8.90	13253	0.070	0.004	0.075	0.122	44.009880	41.184081	-1267.92	1305.36
4	GUIDE	373565256	9.07	13251	0.000	-0.087	0.069	0.113	44.105113	41.168282	-1531.56	1314.78
5	GUIDE	374083264	6.65	13263	-0.089	0.125	0.059	0.104	43.093662	42.020961	1682.82	-1235.53
6	GUIDE	374087680	9.00	13253	-0.022	0.008	0.095	0.152	43.266373	41.841880	1118.15	-678.30
7	GUIDE	374084672	9.19	13236	0.035	-0.059	0.097	0.158	42.731967	41.662055	2425.71	199.12

## 2.4 Star Slots

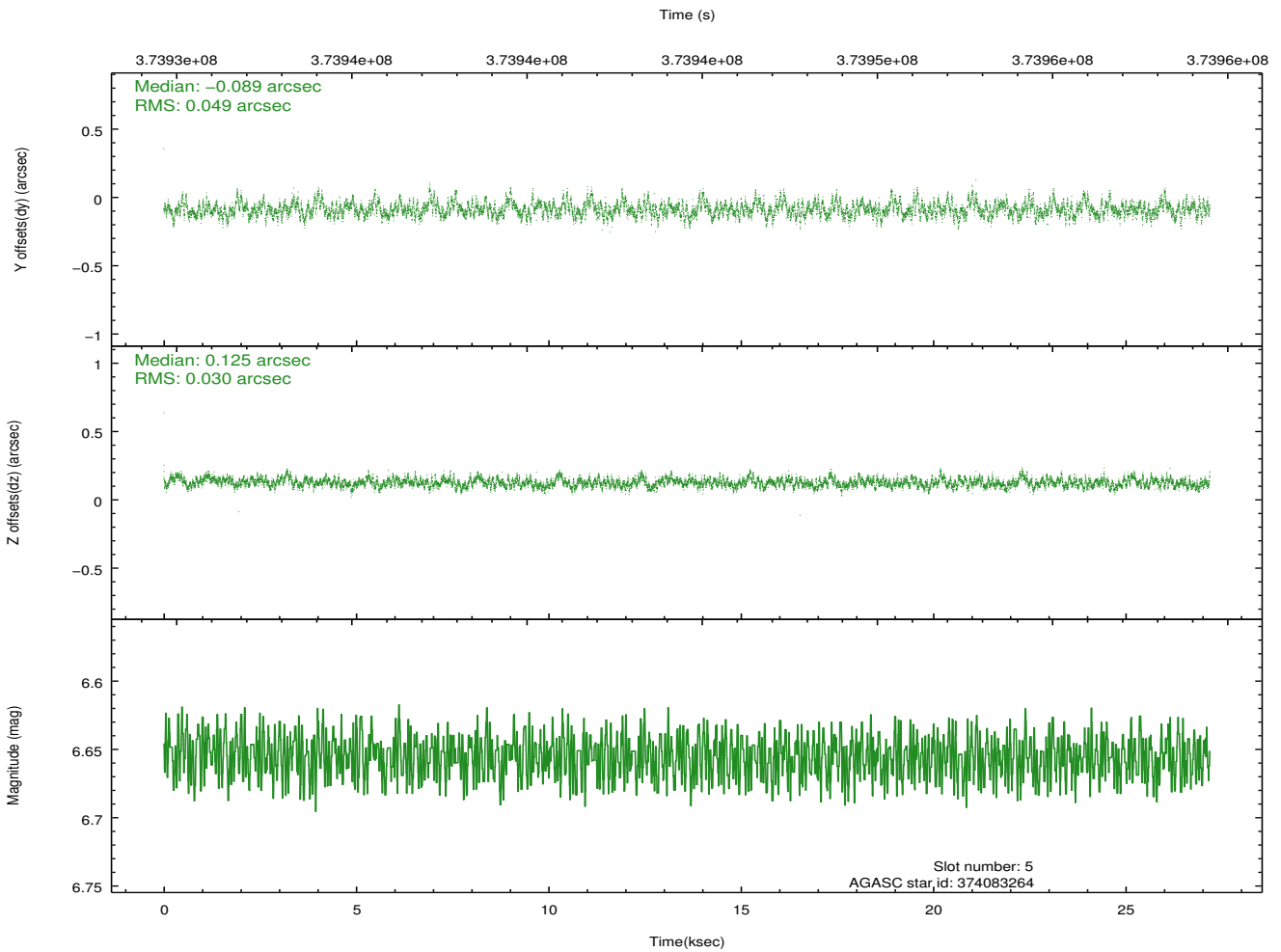
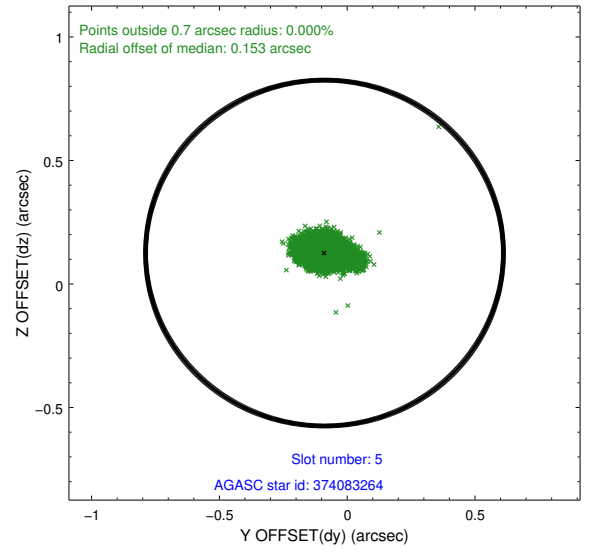
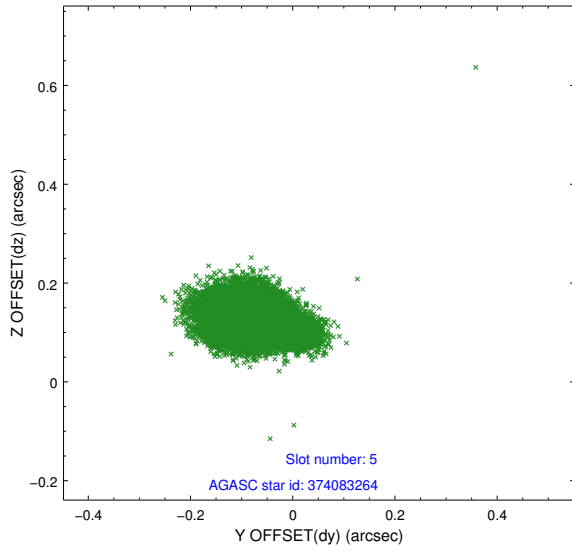
### 2.4.1 Slot 3



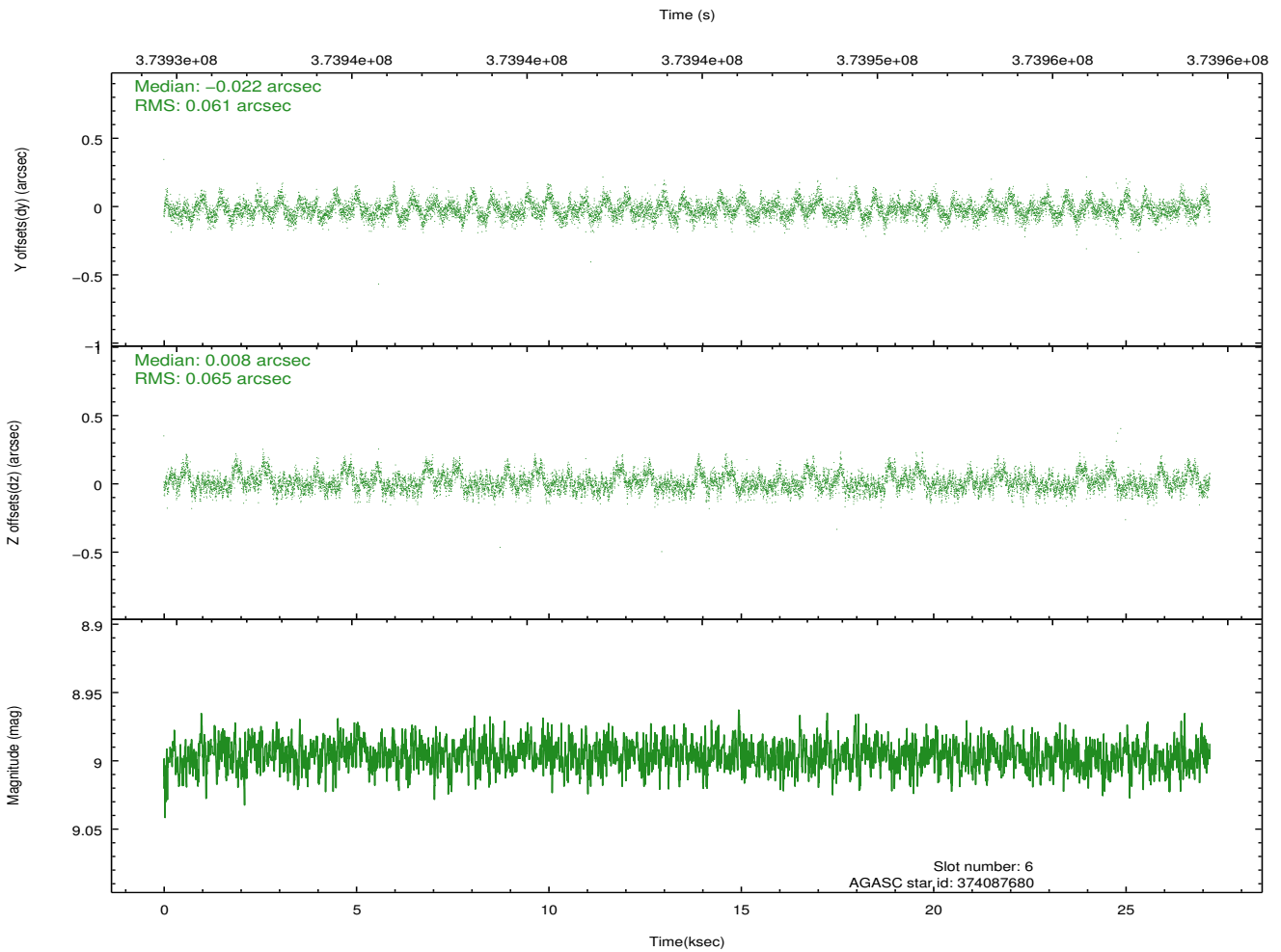
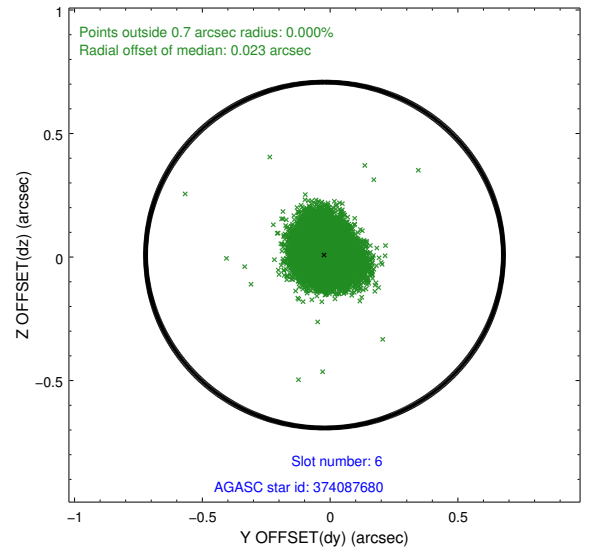
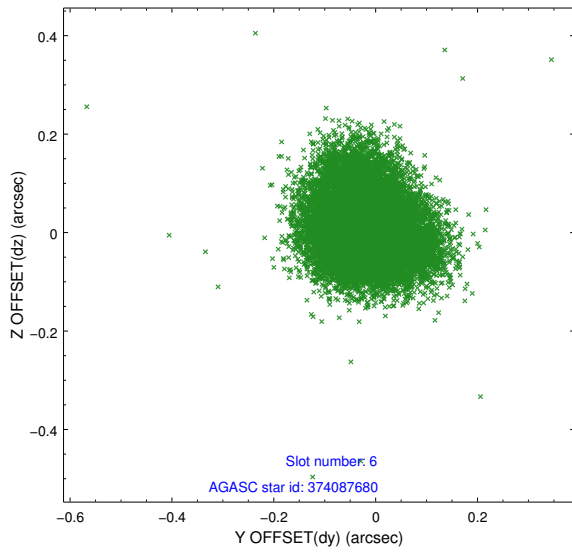
## 2.4.2 Slot 4



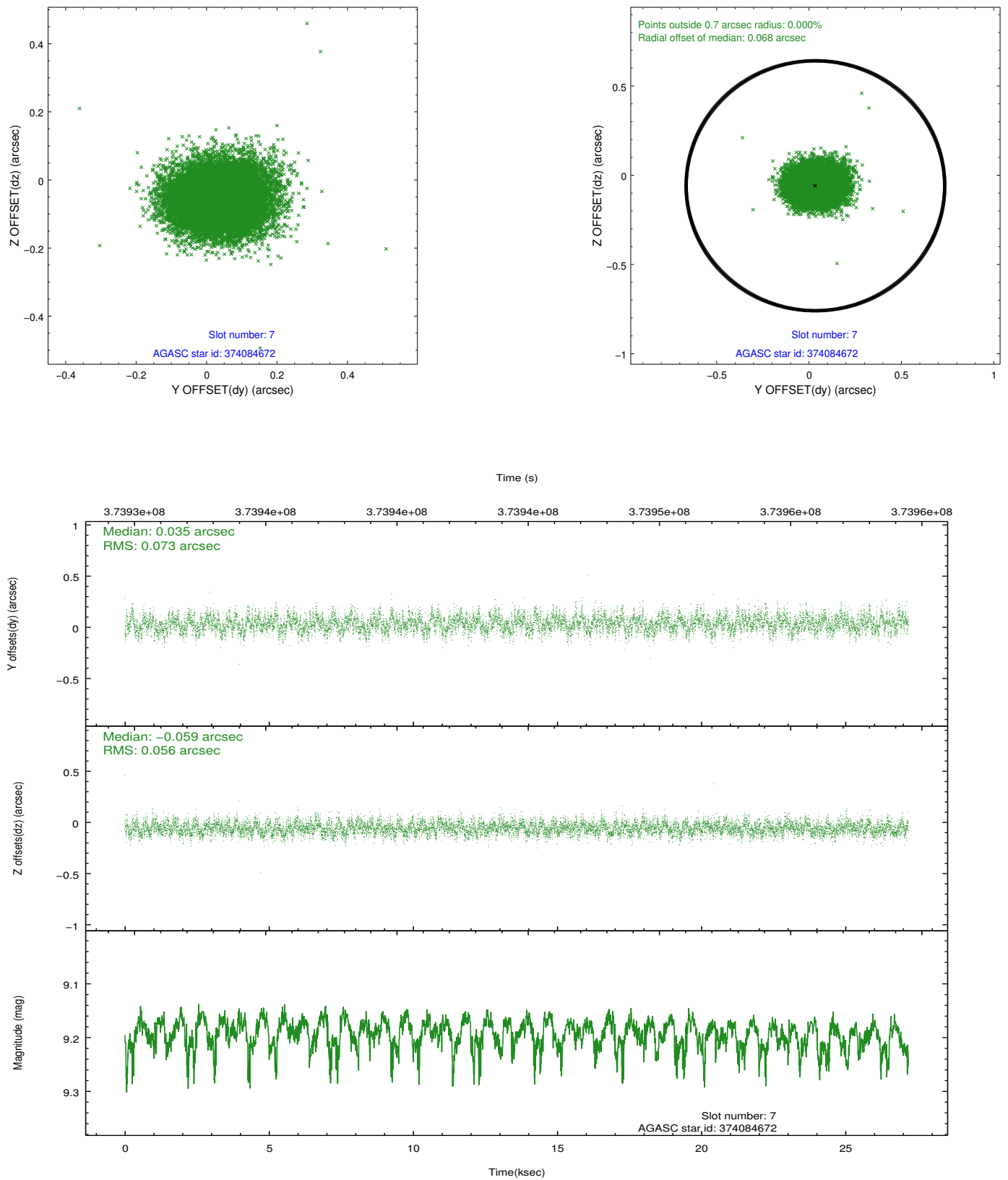
### 2.4.3 Slot 5



### 2.4.4 Slot 6

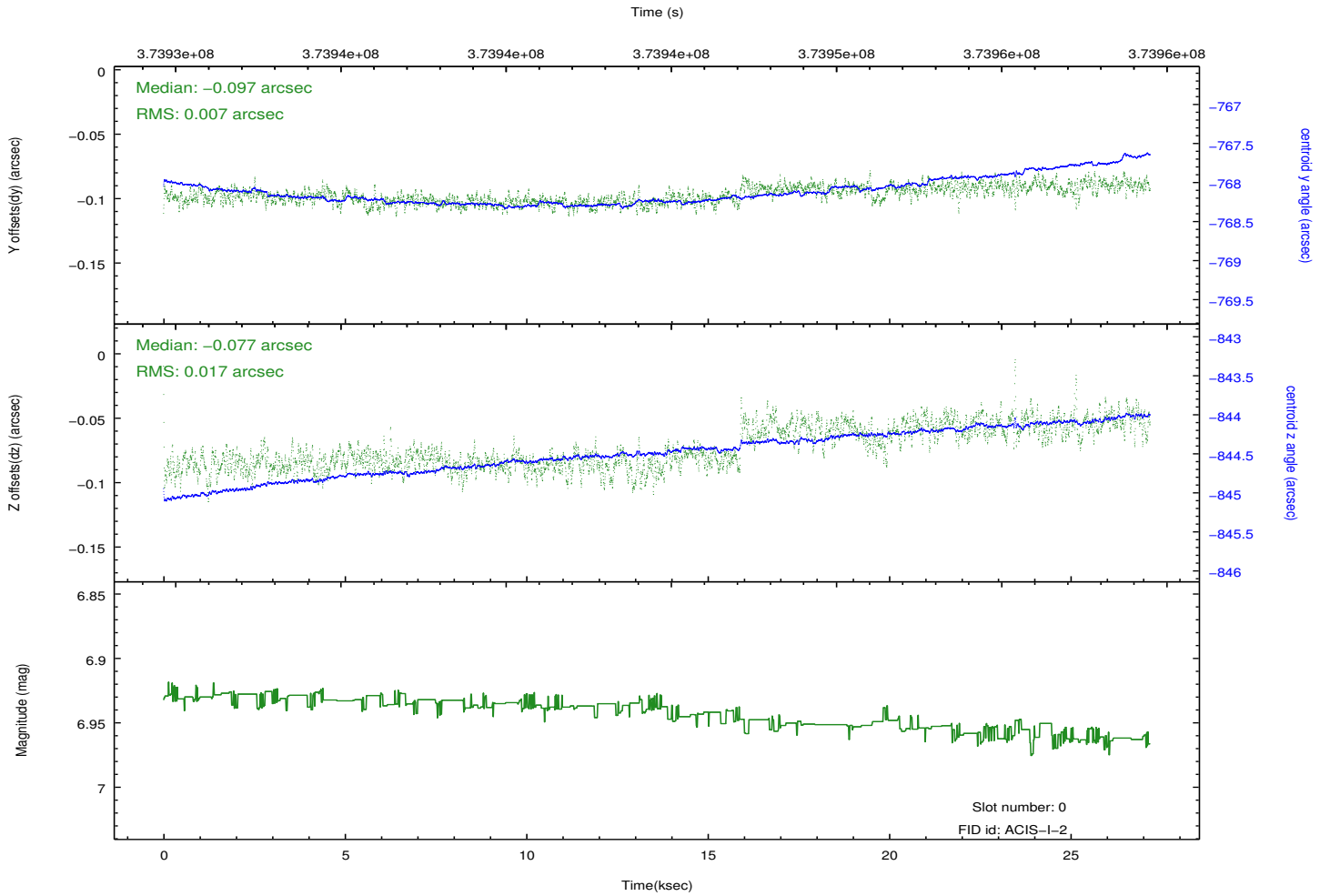
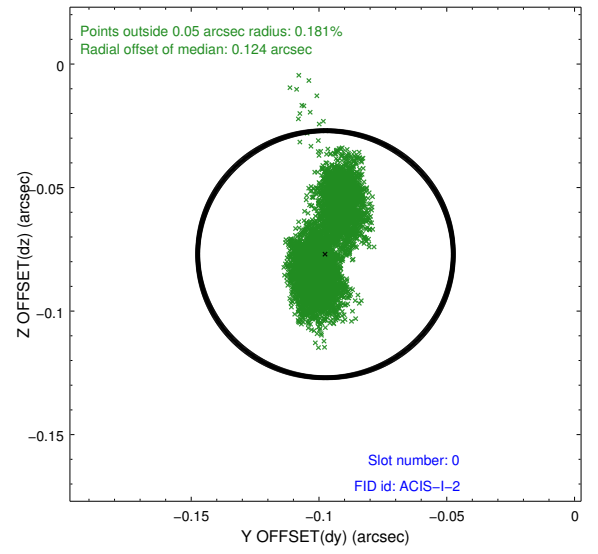
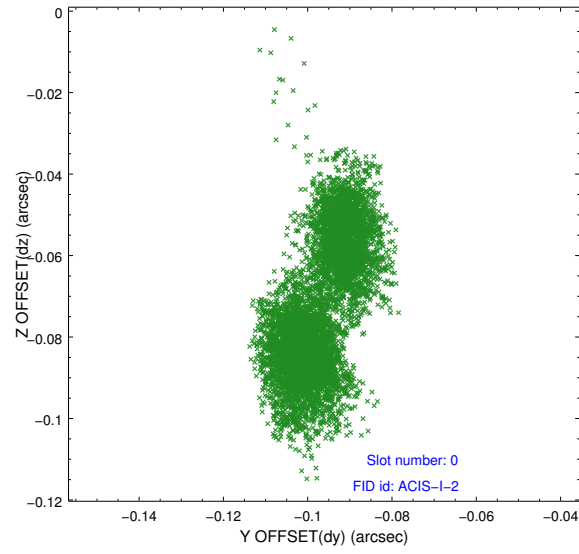


## 2.4.5 Slot 7

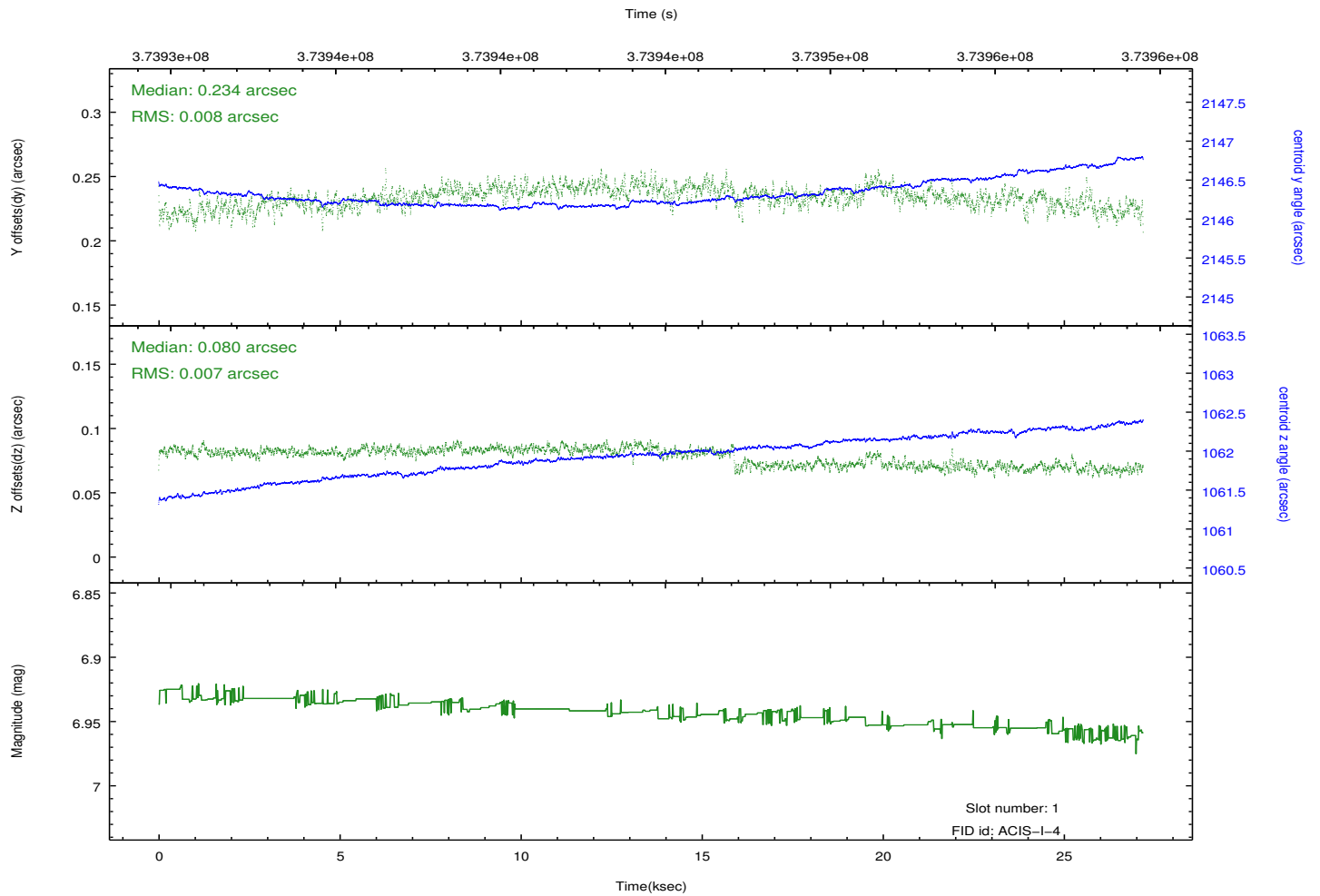
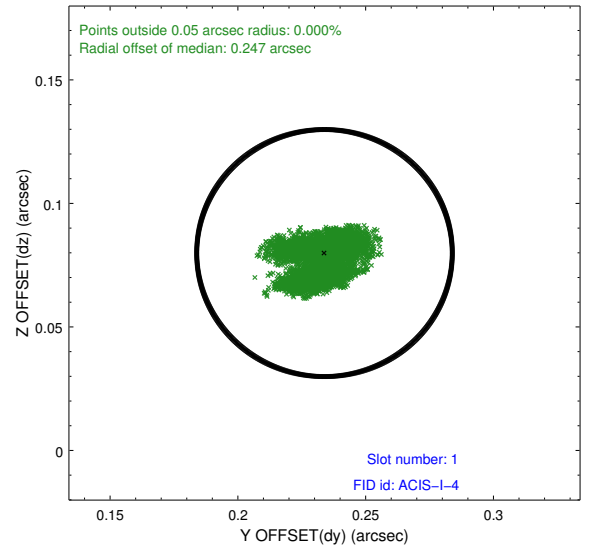
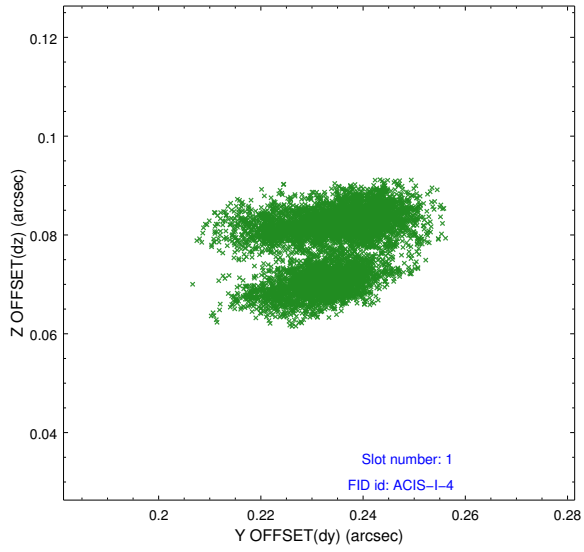


## 2.5 FID Slots

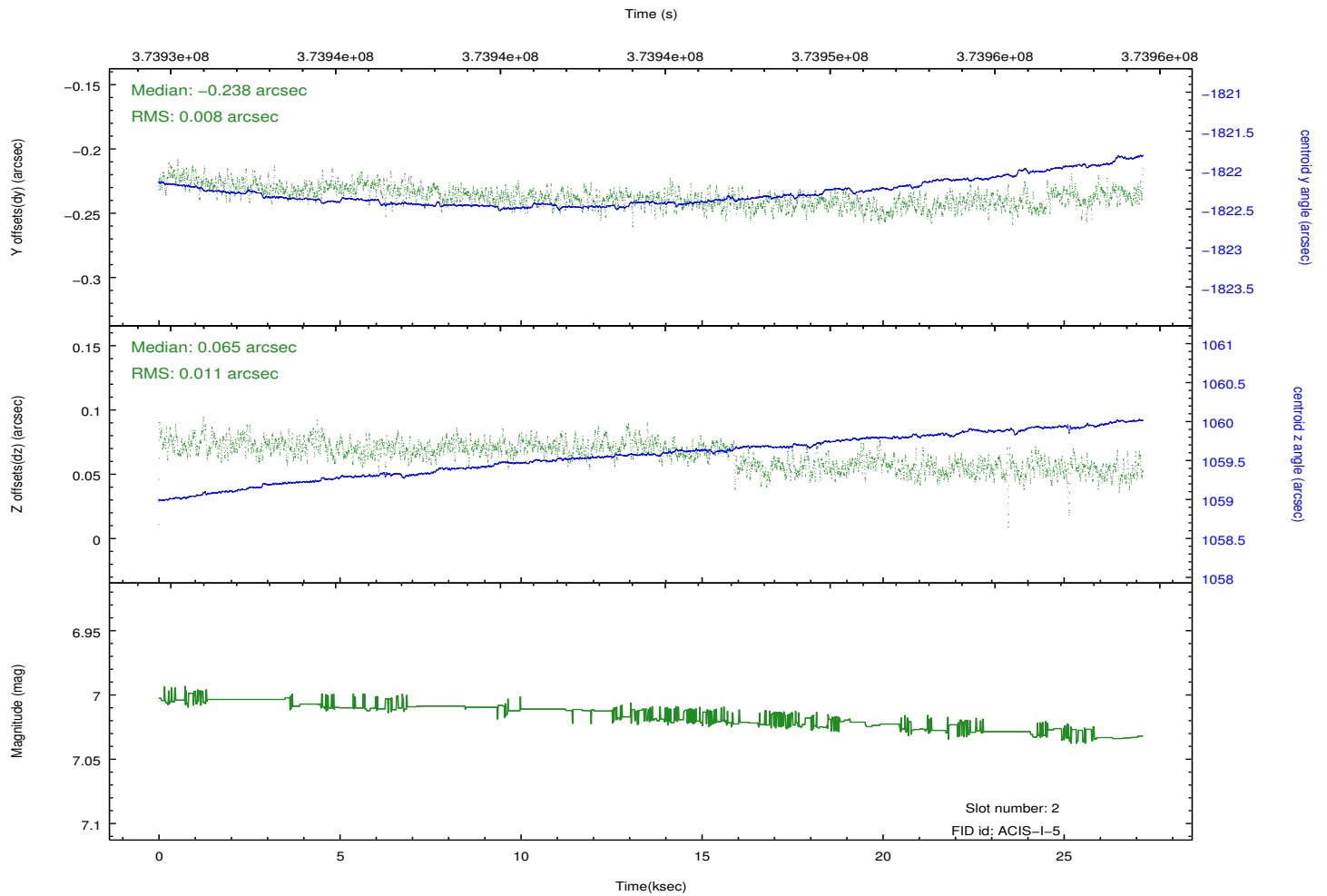
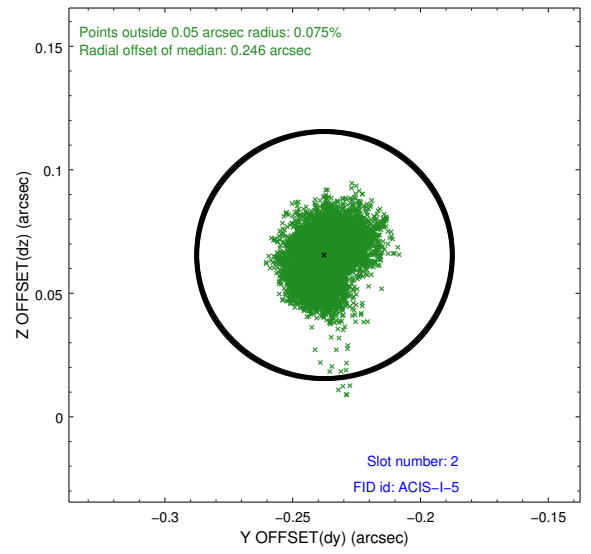
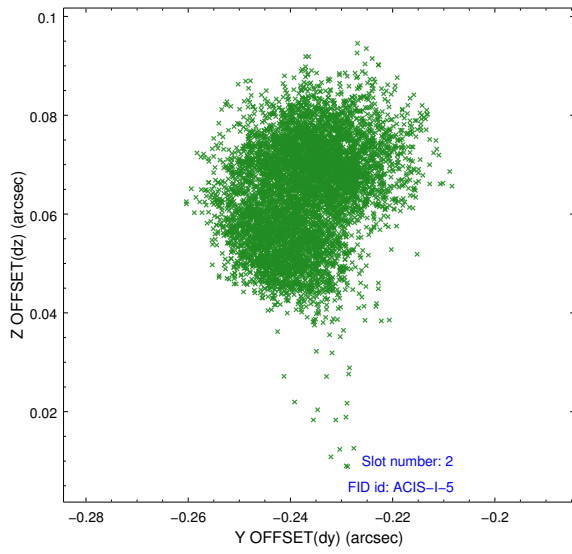
### 2.5.1 Slot 0



## 2.5.2 Slot 1



### 2.5.3 Slot 2



# A Summary

## A.1 Status

V&V Scientist	Beth Sundheim
V&V Date (YYYY-MM-DD)	2012.06.20
V&V Edition	1
V&V Disposition and Status	OK
V&V Charge Time	27.177659208775

## A.2 Comments

Joint proposal with NRAO.