

V&V Reference Report

L2 ASCDS Version : 8.4.5

Observation 12098 - L2 Version 2
Chandra X-Ray Center

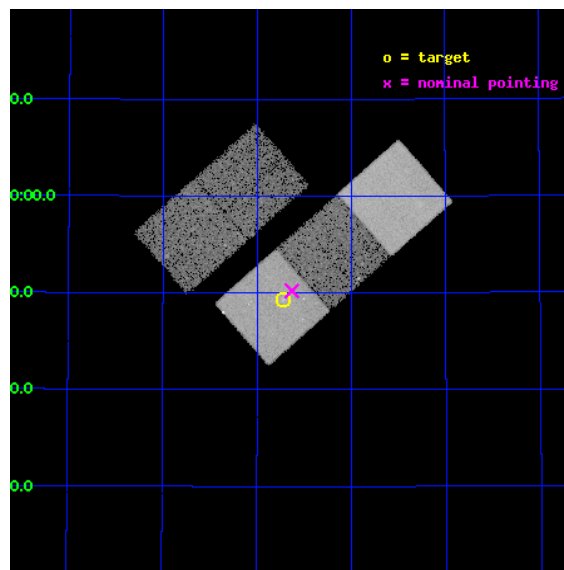
L2 Processing Date : Jun 20 2012

Contents

1	Front	2
2	OBI	3
2.1	OBI	3
2.1.1	Images	3
2.1.2	Bias	3
2.1.3	Parameters	4
2.1.4	Events	4
2.2	Compared Parameters	5
2.3	Aspect	6
2.4	Star Slots	9
2.4.1	Slot 3	9
2.4.2	Slot 4	10
2.4.3	Slot 5	11
2.4.4	Slot 6	12
2.4.5	Slot 7	13
2.5	FID Slots	14
2.5.1	Slot 0	14
2.5.2	Slot 1	15
2.5.3	Slot 2	16
A	Summary	17
A.1	Status	17
A.2	Comments	17

1 Front

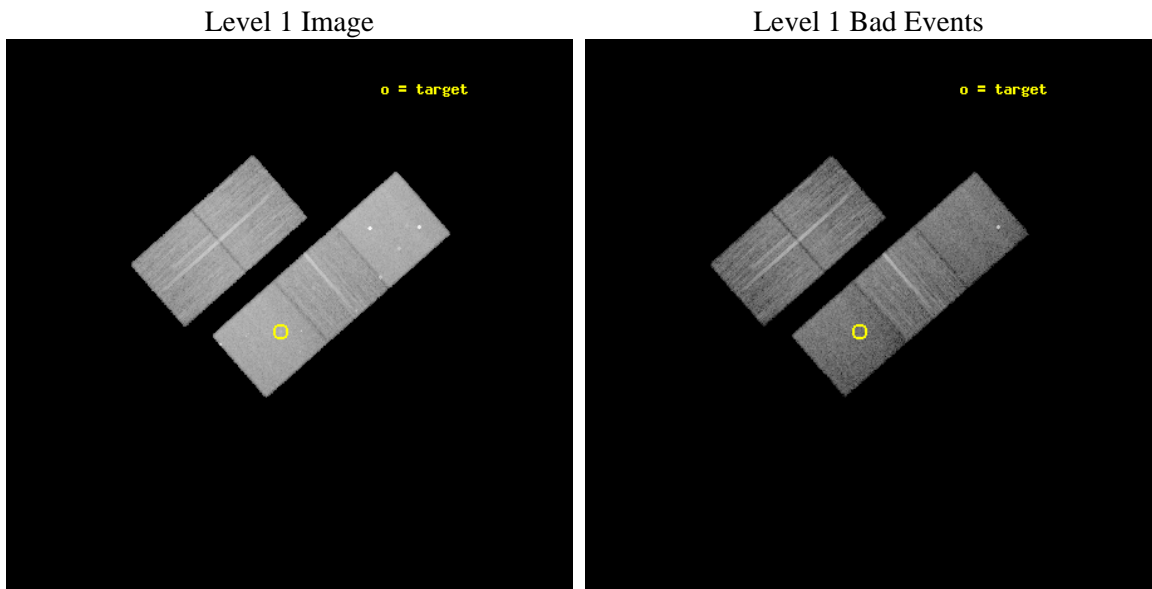
seq_num	800896	Sequence number
obs_id	12098	Observation id
title	Chandra Observations of Two Unusual Lensing Groups of Galaxies	Pro
observer	Professor JIMMY IRWIN	Principal investigator
object	Cheshire Cat Lens	Source name
dtcycle	0	
cycle	P	events from which exps? Prim/Second/Both
ra_targ	159.679708	Observer's specified target RA [deg]
dec_targ	48.821944	Observer's specified target Dec [deg]
ra_nom	159.65765448794	Nominal RA [deg]
dec_nom	48.836977717052	Nominal Dec [deg]
roll_nom	138.6005357696	Nominal Roll [deg]
revision	2	Processing version of data
ontime	13680.300105214	Sum of GTIs [s]
livetime	13501.556913049	Livetime [s]
ontime2	13680.300105214	Sum of GTIs [s]
ontime3	13680.300105214	Sum of GTIs [s]
ontime5	13680.300105214	Sum of GTIs [s]
ontime6	13680.300105214	Sum of GTIs [s]
ontime7	13680.300105214	Sum of GTIs [s]
l2events	170162	Number of level 2 events



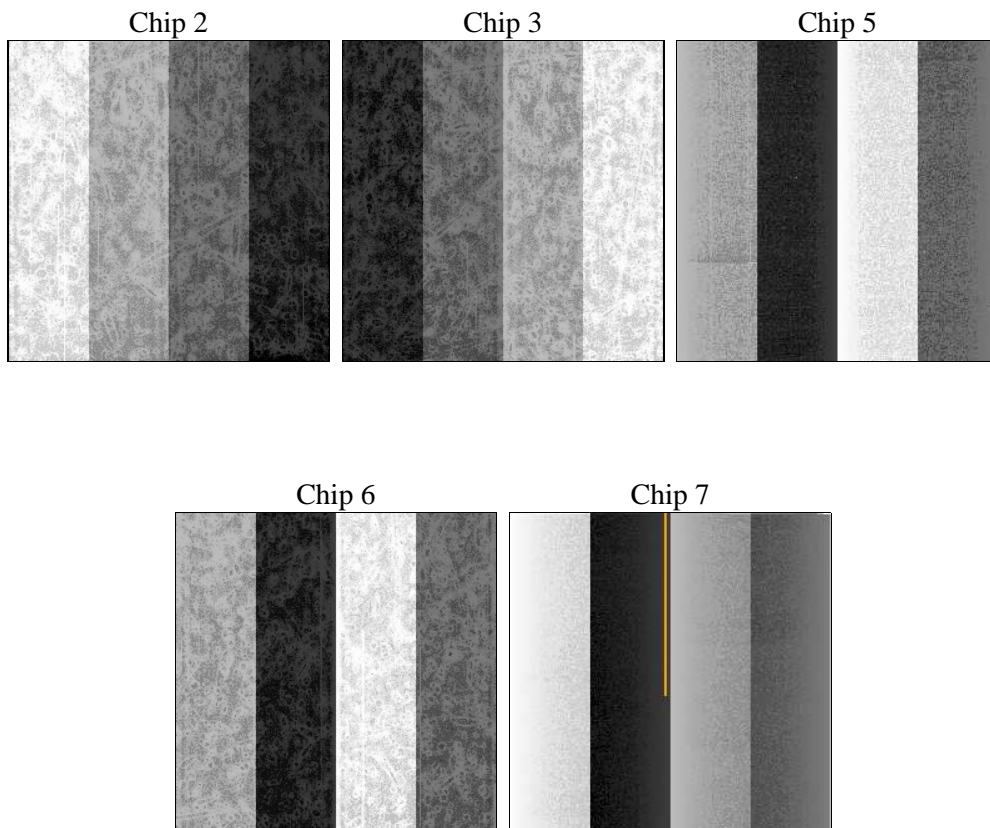
2 OBI

2.1 OBI

2.1.1 Images



2.1.2 Bias



2.1.3 Parameters

obi_num	0	Obi number	sched_exp_time	13500.000000	[s] Scheduled observation exposure time
ascdsver	8.4.5	Processing system revision	ontime	13680.300105214	Sum of GTIs [s]
caldbver	4.4.10	 	ontime2	13680.300105214	Sum of GTIs [s]
date	2012-06-20T13:41:27	Date and time of file creation	ontime3	13680.300105214	Sum of GTIs [s]
revision	2	Processing version of data	ontime5	13680.300105214	Sum of GTIs [s]
			ontime6	13680.300105214	Sum of GTIs [s]
			ontime7	13680.300105214	Sum of GTIs [s]
			l1events	664751	Number of level 1 events

2.1.4 Events

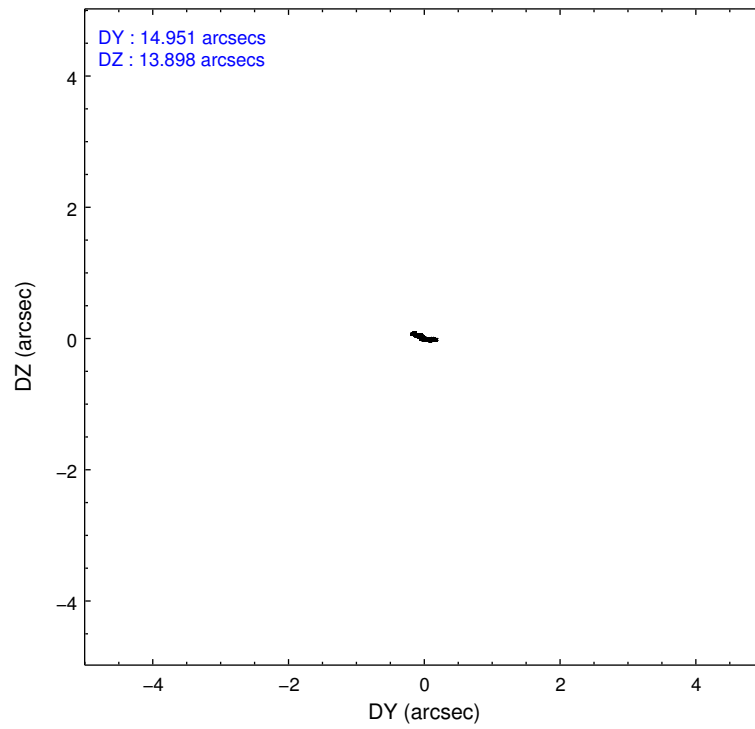
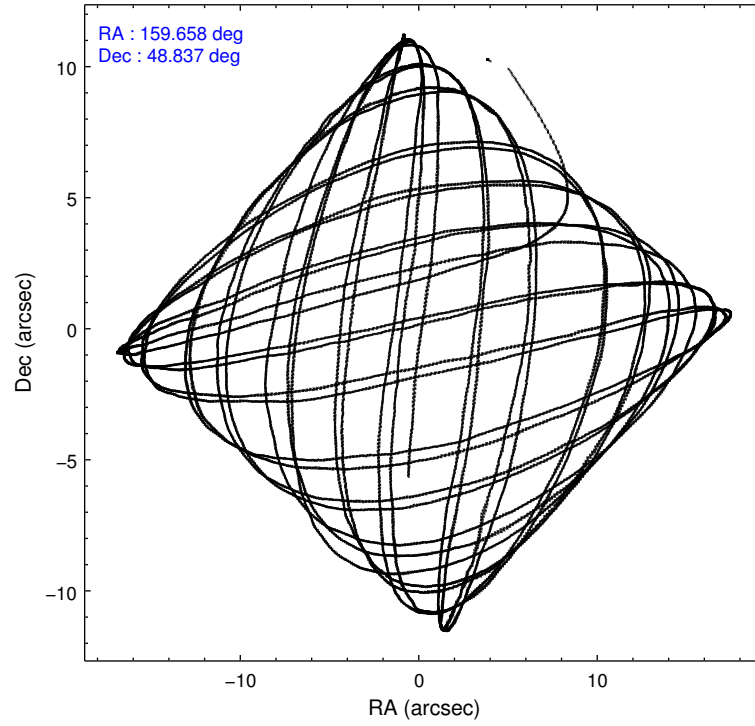
	ccd 2	ccd 3	ccd 5	ccd 6	ccd 7
level 1 events	120527	113252	175248	116441	139283
rejected events	108840	101799	88365	103840	76454
rejected %	90%	89%	50%	89%	54%

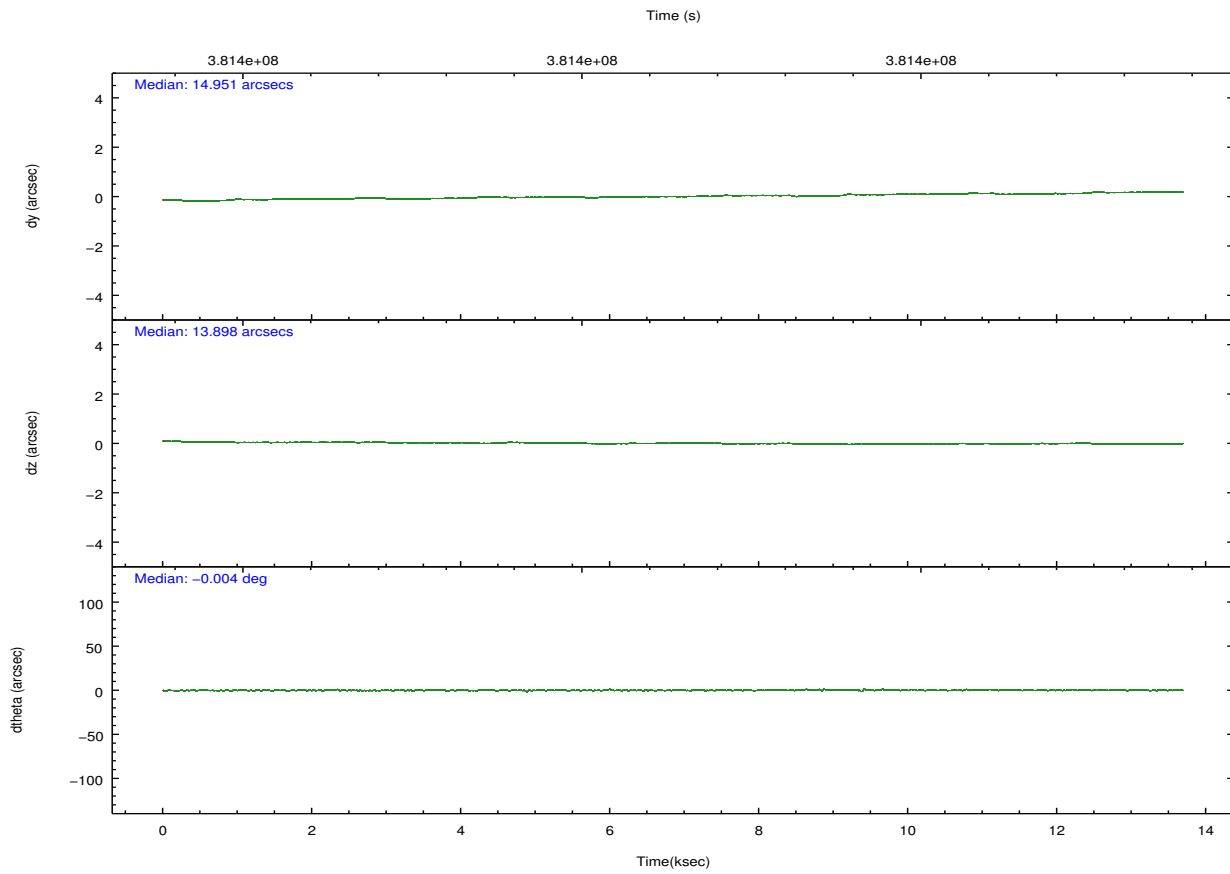
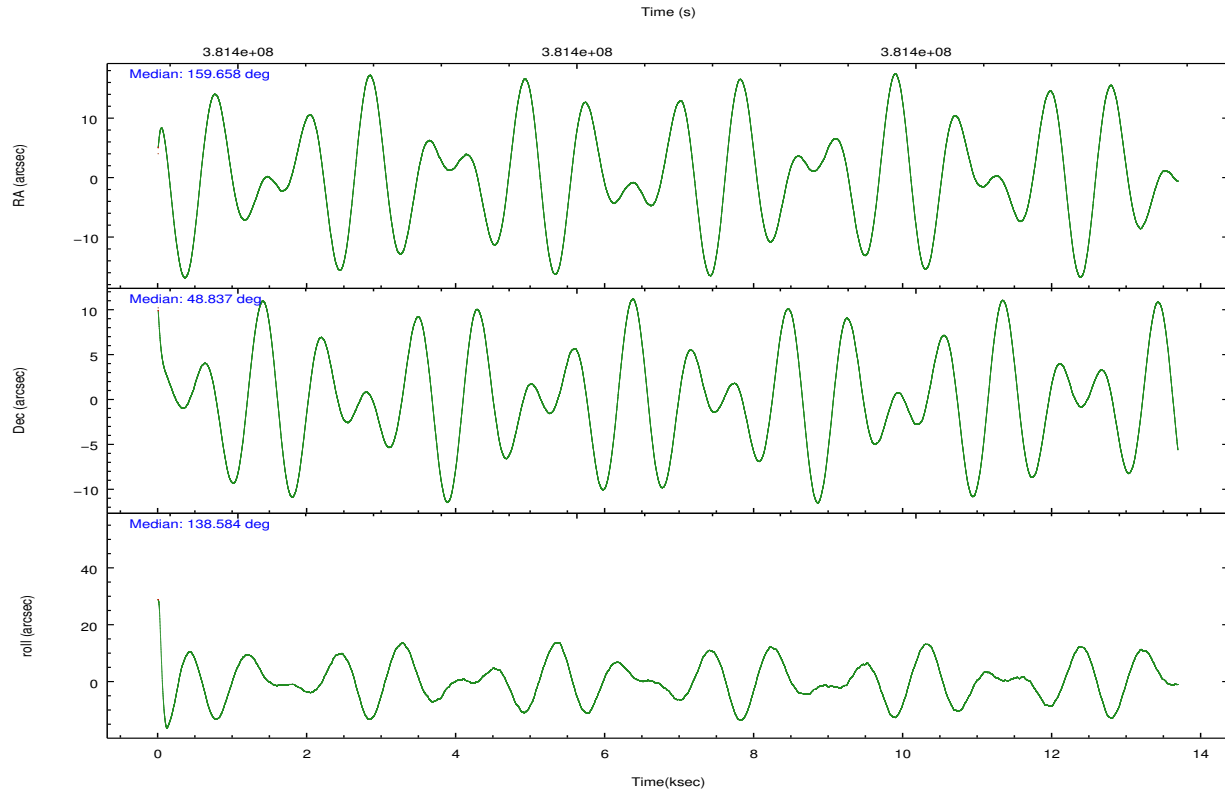
	ccd 2	ccd 3	ccd 5	ccd 6	ccd 7
grade 0 events	4205	4169	10109	4535	6220
	3%	3%	5%	3%	4%
grade 1 events	68	65	380	79	187
	0%	0%	0%	0%	0%
grade 2 events	2850	2522	26948	2847	13300
	2%	2%	15%	2%	9%
grade 3 events	1303	1269	3338	1333	5687
	1%	1%	1%	1%	4%
grade 4 events	1244	1262	3158	1320	5566
	1%	1%	1%	1%	3%
grade 5 events	4269	4956	13212	5044	14325
	3%	4%	7%	4%	10%
grade 6 events	2204	2379	44400	2721	32827
	1%	2%	25%	2%	23%
grade 7 events	104384	96630	73703	98562	61171
	86%	85%	42%	84%	43%

2.2 Compared Parameters

Parameter	Planned	Actual	Parameter	Planned	Actual
Instrument	ACIS	ACIS	Obspar format version number	7	7
Detector	ACIS-23567	ACIS-23567	Obspar file type	PREDICTED	ACTUAL
Grating	NONE	NONE	Obspar update status	NONE	UPDATED
Data mode	VFAINT	VFAINT	Number of optional ACIS chips dropped	0	0
Observation mode	POINTING	POINTING	On-chip summing requested	N	N
[deg] Pointing RA	159.698527	159.6576544879404	Subarray requested	NONE	NONE
[deg] Pointing Dec	48.831895	48.83697771705199	Alternating exposures requested	N	N
[deg] Pointing Roll	138.413078	138.6005357696012	[s] Primary exposure time	0.000000	3.1
[mm] SIM focus pos	-0.684267	-0.6828225247311905			
[mm] SIM defocus	0	0.001444936568705701			
[mm] SIM translation stage pos	-190.132523	-190.1400660498719			
[mm] SIM translation stage offset	0	0.00754346686406393			
[s] Observation start time (MET)	381394691.184000	381393612.34846			
Observation start date	2010-02-01T06:57:05	2010-02-01T06:40:12			
[s] Observation end time (MET)	381408191.184000	381409108.29924			
Observation end date	2010-02-01T10:42:05	2010-02-01T10:58:28			
Read mode	TIMED	TIMED			

2.3 Aspect



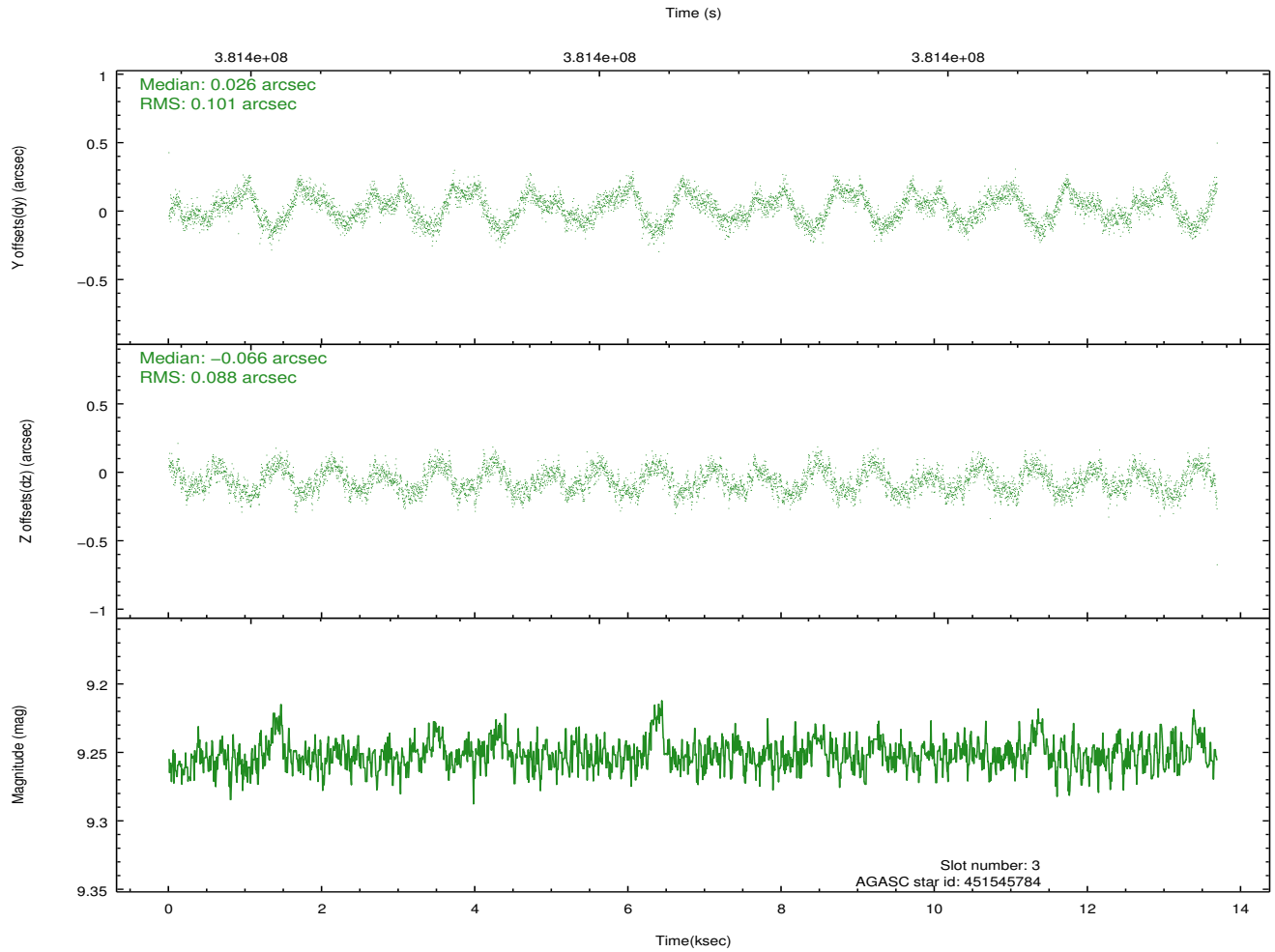
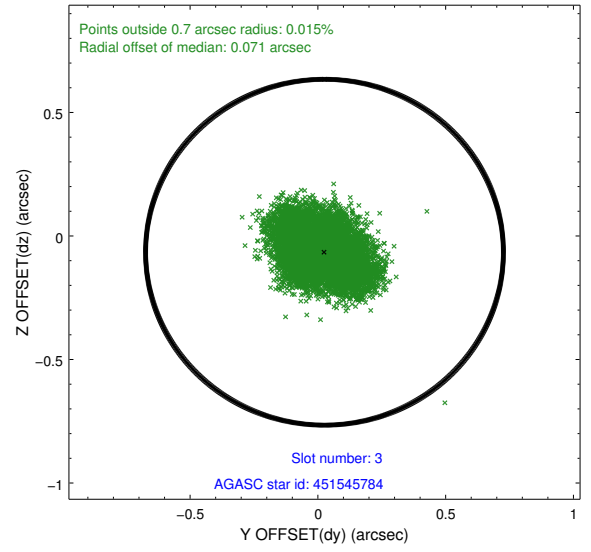
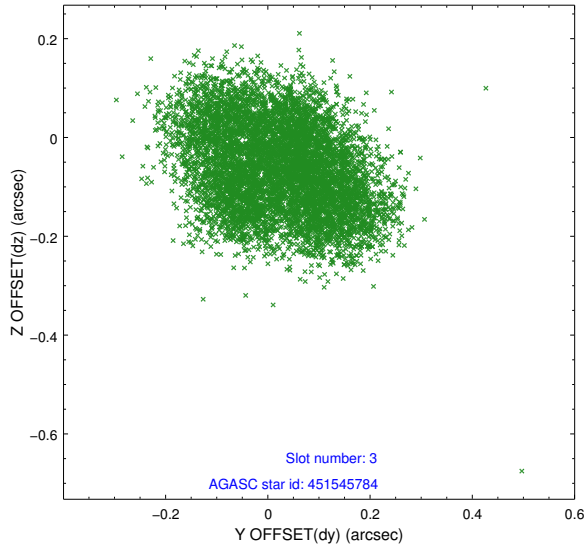


Slot Statistics

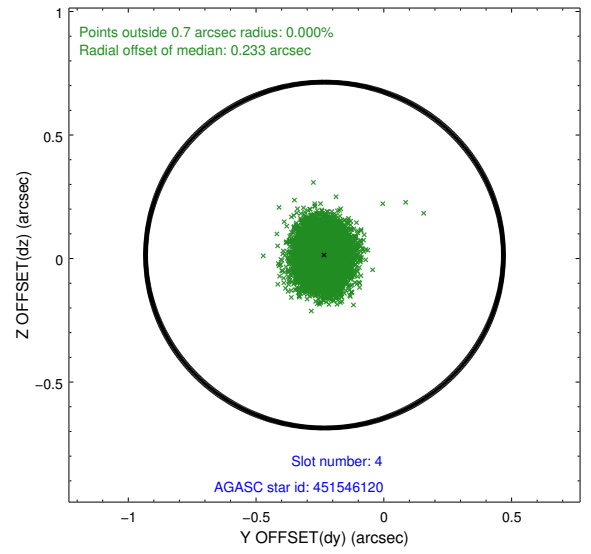
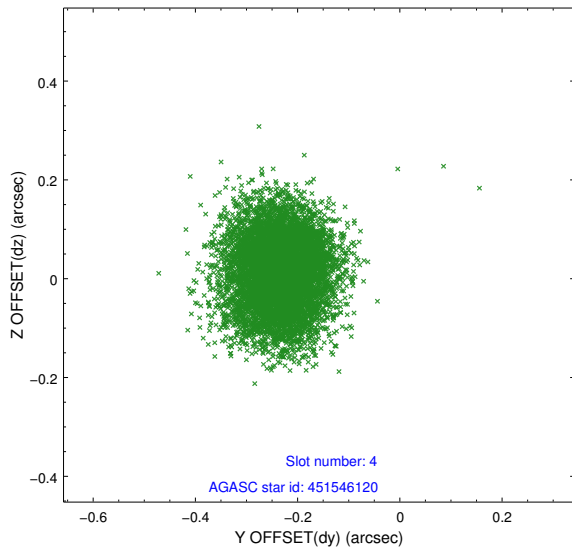
slot	status	id	mag	n_pts	med_dy	med_dz	dr1	dr2	ra	dec	mean_y	mean_z
0	FID	ACIS-S-2	6.92	3338	-0.074	-0.053	0.007	0.011	0.000000	0.000000	-768.01	-1735.30
1	FID	ACIS-S-4	7.01	3339	0.181	0.050	0.005	0.010	0.000000	0.000000	2145.38	172.91
2	FID	ACIS-S-5	7.03	3338	-0.139	0.012	0.007	0.011	0.000000	0.000000	-1820.46	166.96
3	GUIDE	451545784	9.25	6671	0.026	-0.066	0.146	0.220	160.260479	48.988129	-615.92	-1305.32
4	GUIDE	451546120	9.07	6665	-0.232	0.014	0.093	0.149	159.236808	48.295921	-452.34	2174.94
5	GUIDE	451546176	9.32	6668	0.044	0.151	0.096	0.156	159.850031	48.804956	-332.78	-165.23
6	GUIDE	451546264	9.06	6672	-0.007	0.150	0.088	0.136	160.264490	48.572812	-1624.07	-200.73
7	GUIDE	451549136	9.10	6667	0.181	-0.244	0.210	0.282	159.239819	48.412097	-181.82	1855.41

2.4 Star Slots

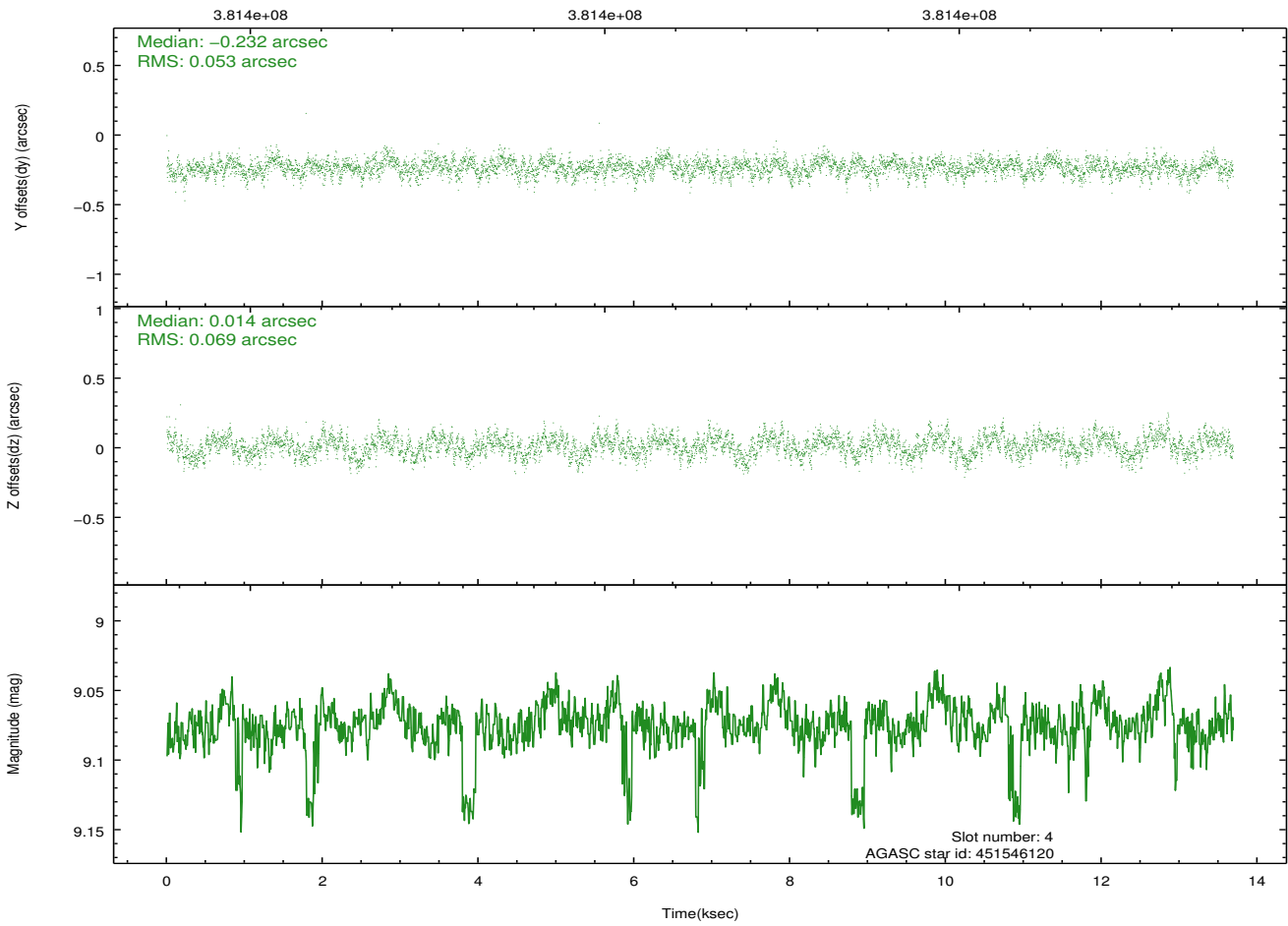
2.4.1 Slot 3



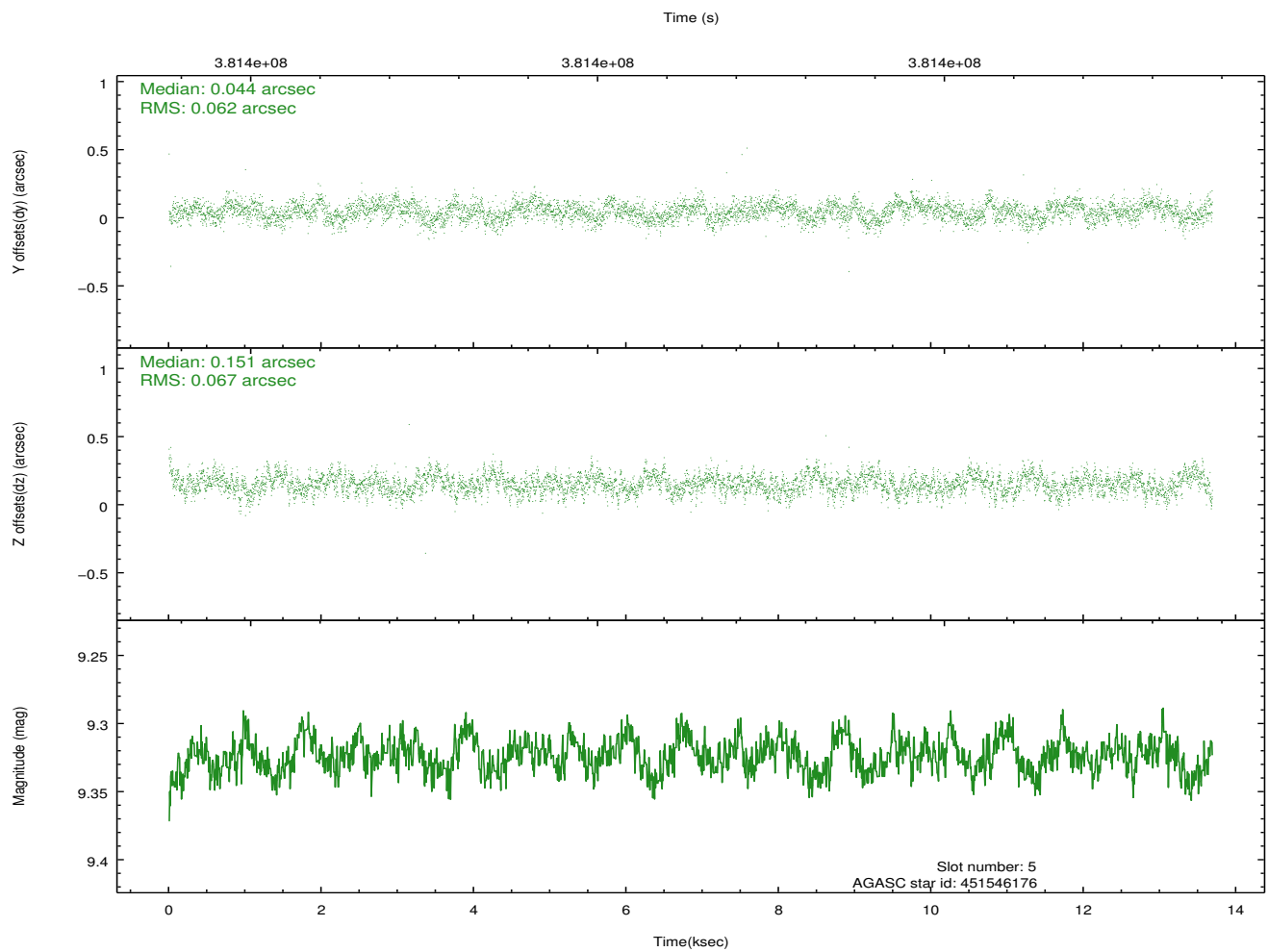
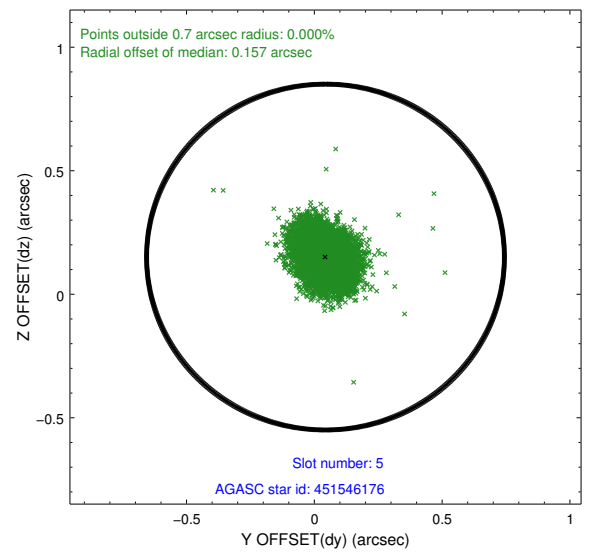
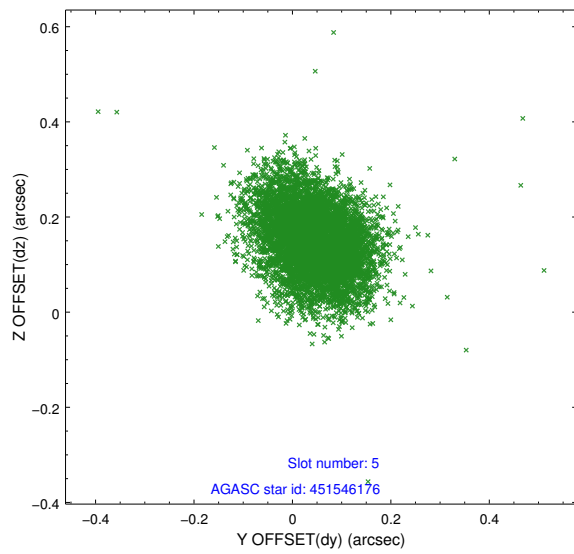
2.4.2 Slot 4



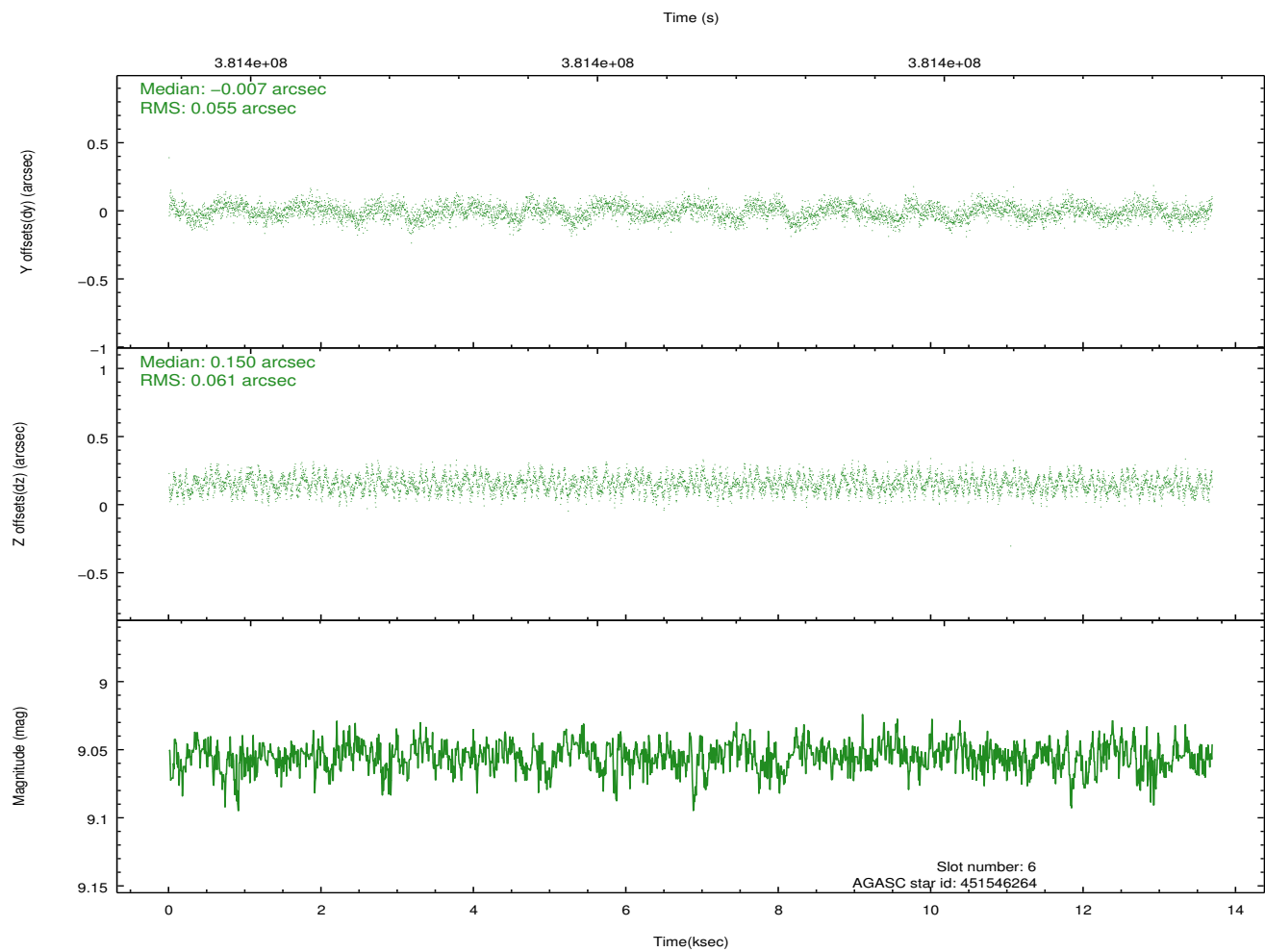
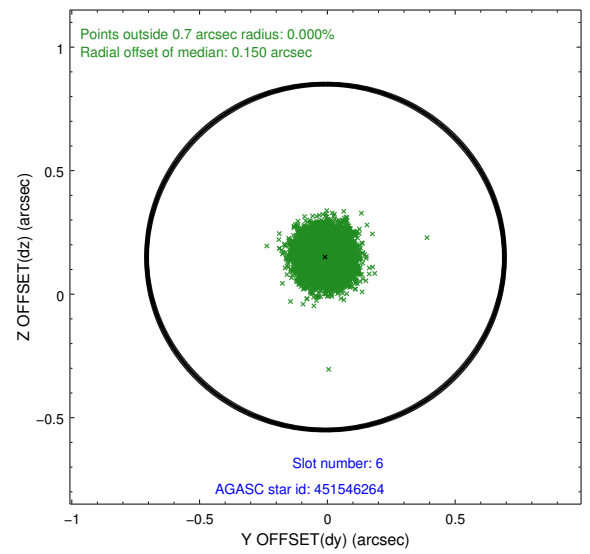
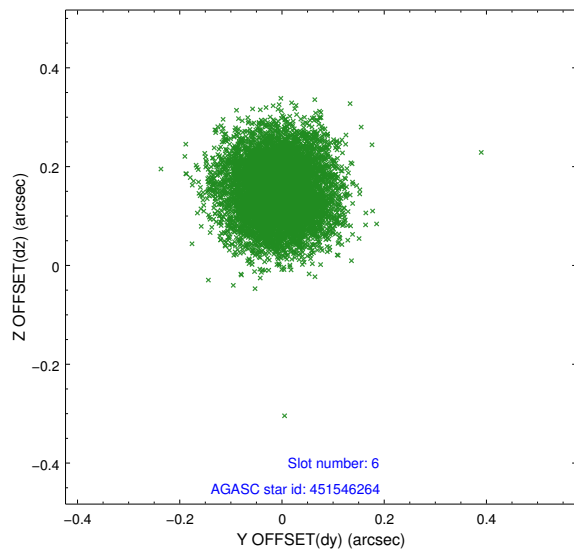
Time (s)



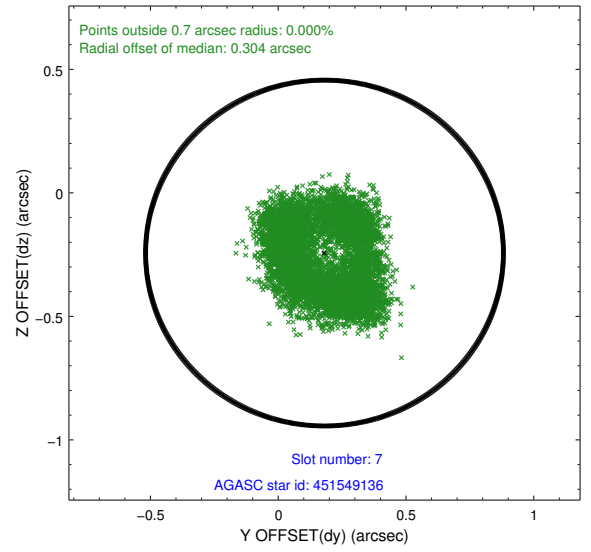
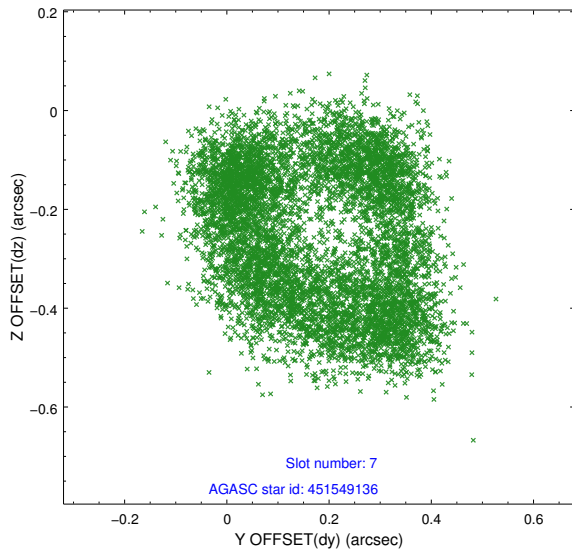
2.4.3 Slot 5



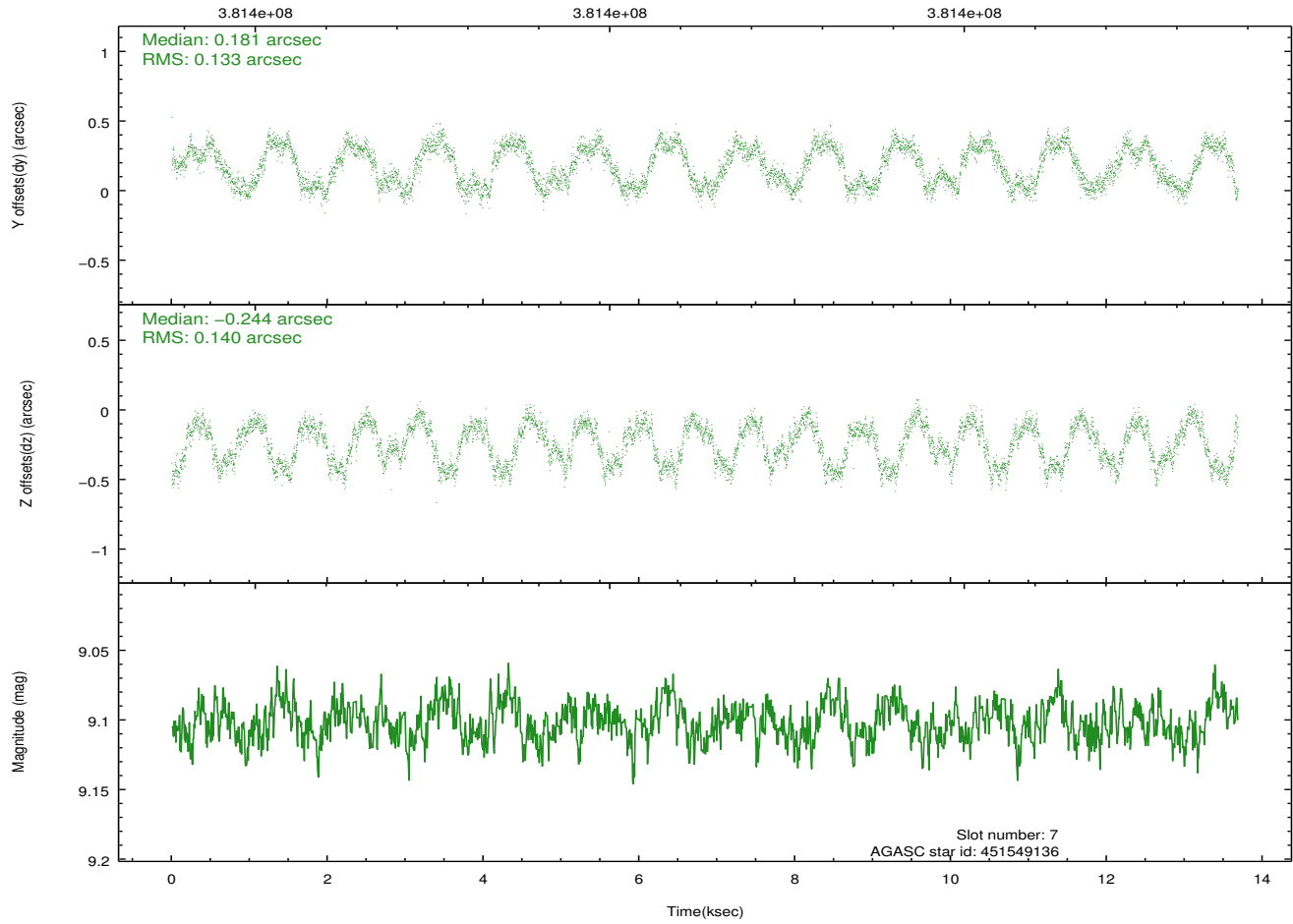
2.4.4 Slot 6



2.4.5 Slot 7

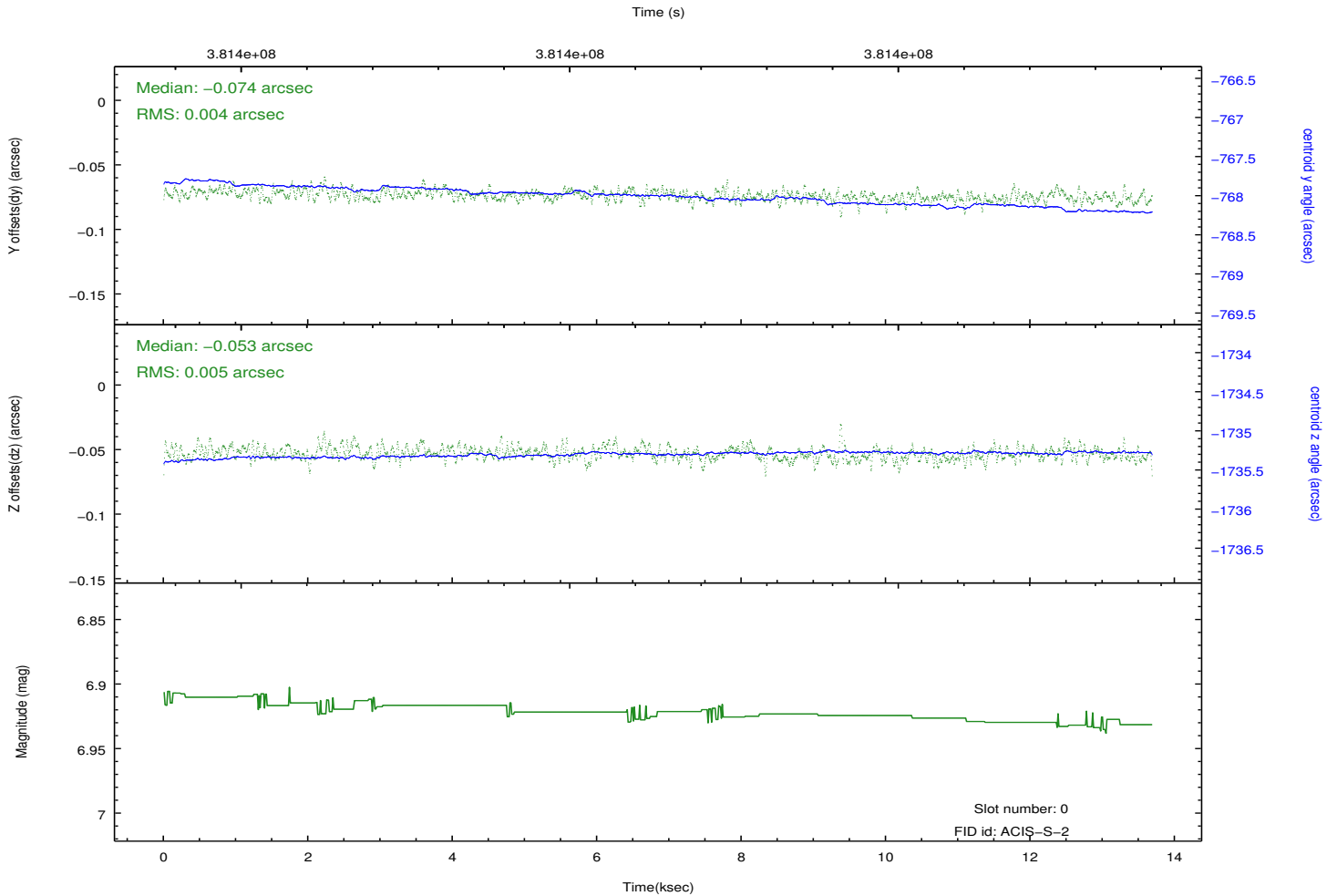
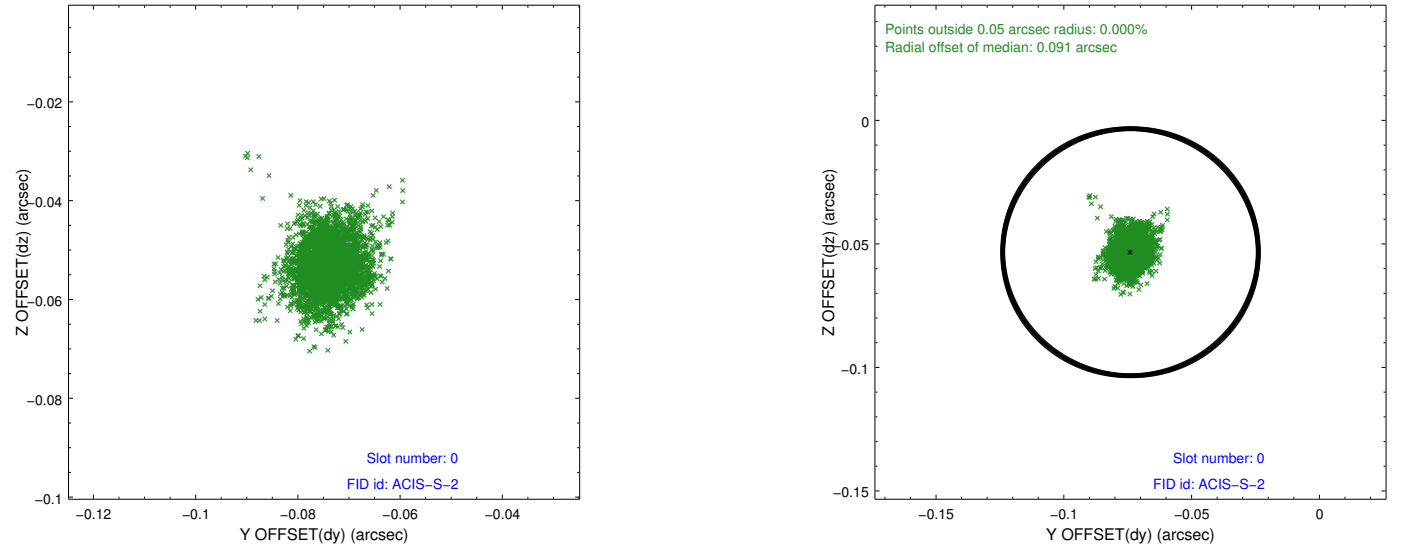


Time (s)

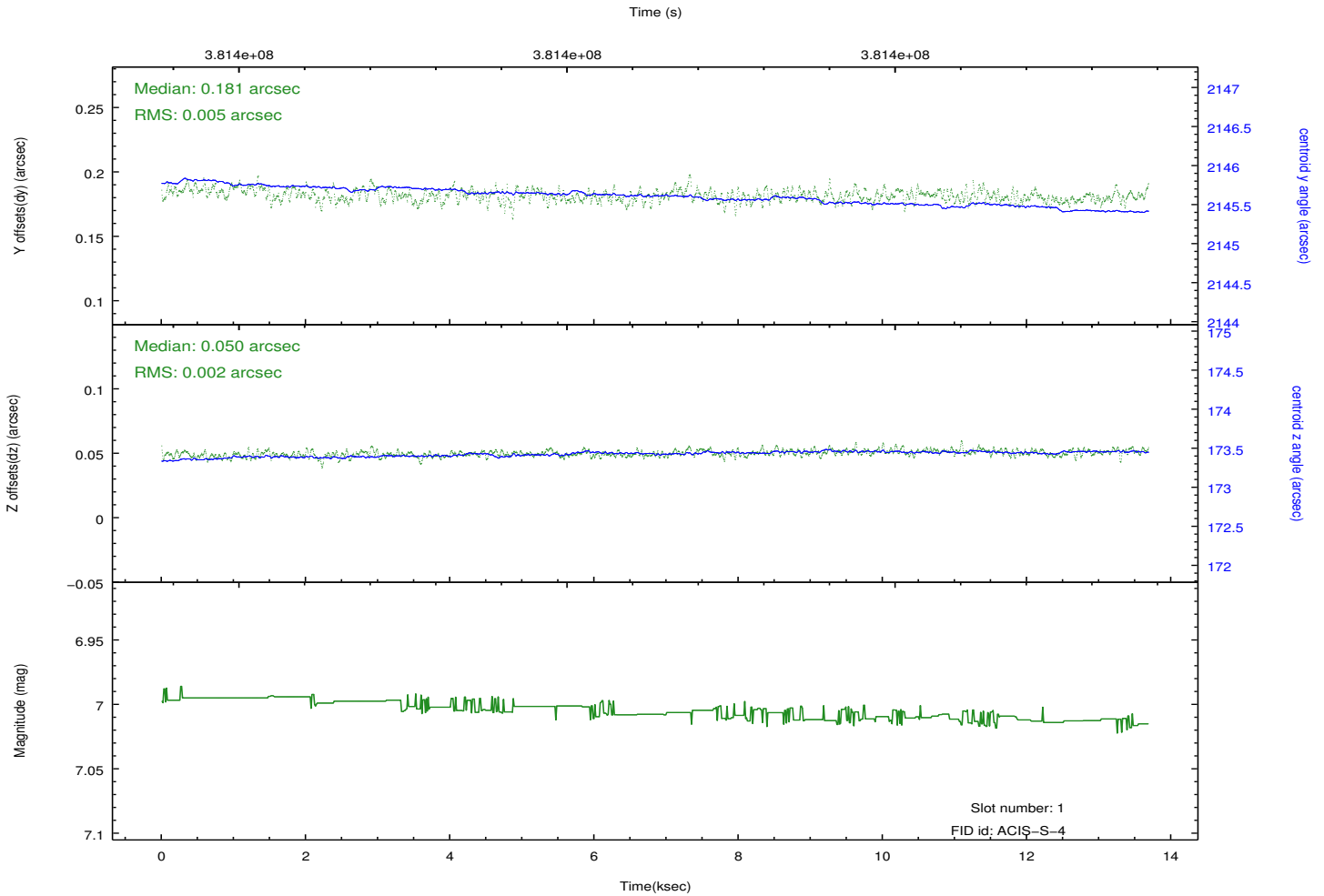
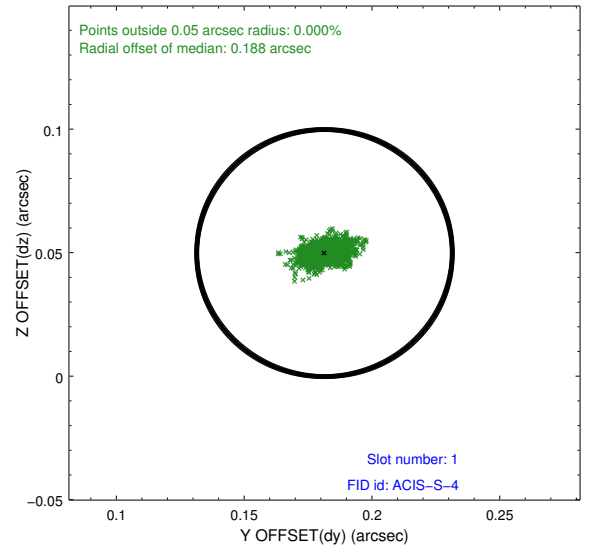
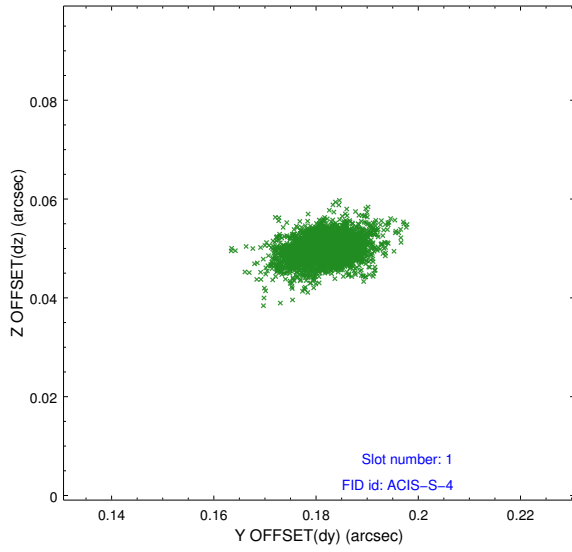


2.5 FID Slots

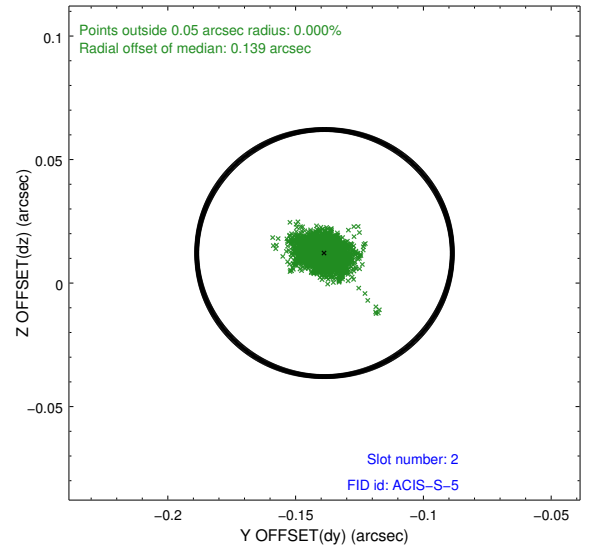
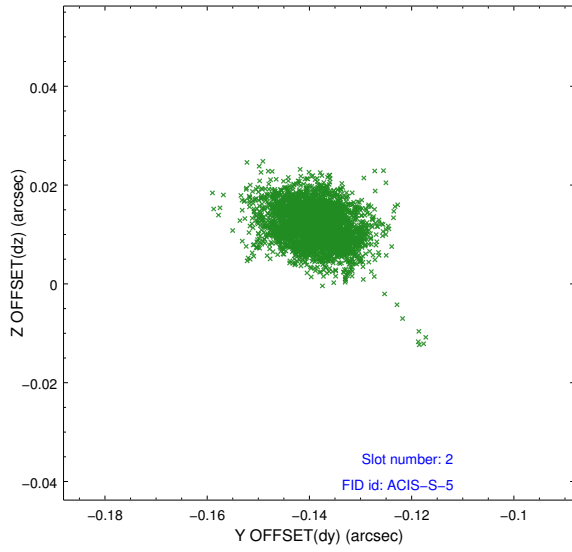
2.5.1 Slot 0



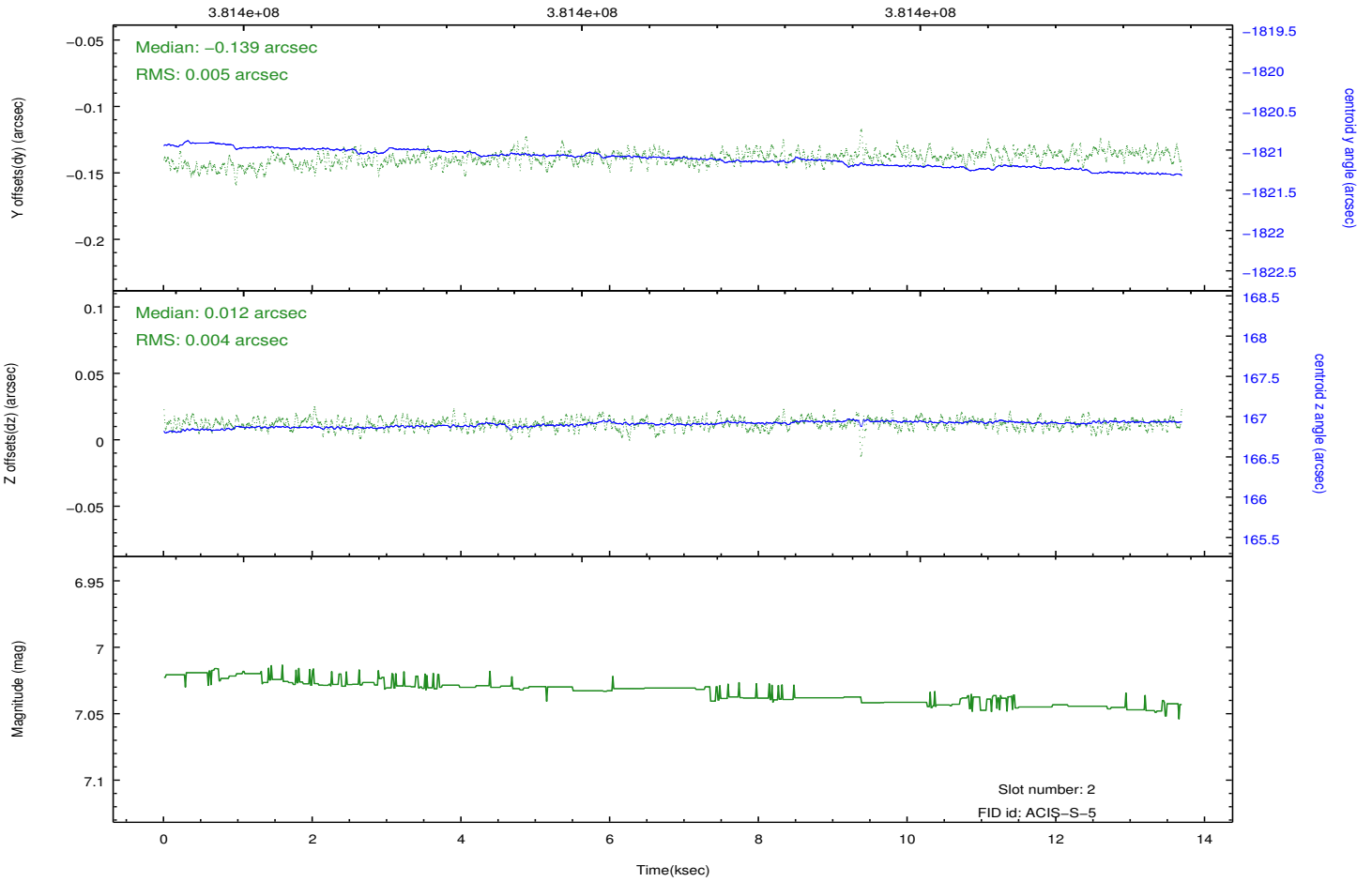
2.5.2 Slot 1



2.5.3 Slot 2



Time (s)



A Summary

A.1 Status

V&V Scientist	Jen Lauer
V&V Date (YYYY-MM-DD)	2012.06.26
V&V Edition	1
V&V Disposition and Status	OK
V&V Charge Time	13.680300105214

A.2 Comments