

V&V Reference Report

L2 ASCDS Version : 8.4.3

Observation 12148 - L2 Version 2
Chandra X-Ray Center

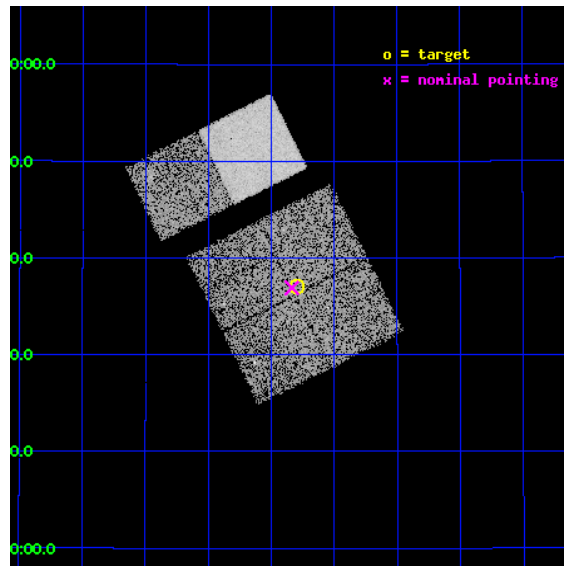
L2 Processing Date : Feb 29 2012

Contents

1	Front	2
2	OBI	3
2.1	OBI	3
2.1.1	Images	3
2.1.2	Bias	3
2.1.3	Parameters	4
2.1.4	Events	4
2.2	Compared Parameters	5
2.3	Aspect	6
2.4	Star Slots	9
2.4.1	Slot 3	9
2.4.2	Slot 4	10
2.4.3	Slot 5	11
2.4.4	Slot 6	12
2.4.5	Slot 7	13
2.5	FID Slots	14
2.5.1	Slot 0	14
2.5.2	Slot 1	15
2.5.3	Slot 2	16
A	Summary	17
A.1	Status	17
A.2	Comments	17

1 Front

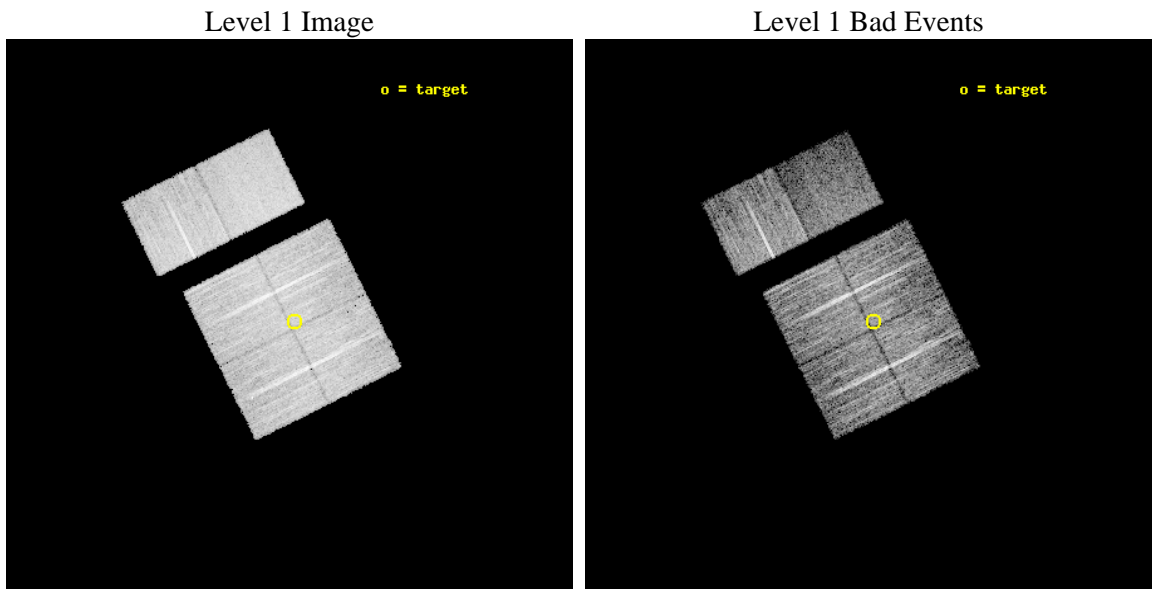
seq_num	501363	Sequence number
obs_id	12148	Observation id
title	Snap-shot survey of new galactic gamma-ray sources.	Proposal title
observer	Prof. Gordon Garmire	Principal investigator
object	1FGL J1954.3+2836	Source name
dtycle	0	
cycle	P	events from which exps? Prim/Second/Both
ra_targ	298.575	Observer's specified target RA [deg]
dec_targ	28.616667	Observer's specified target Dec [deg]
ra_nom	298.58410398182	Nominal RA [deg]
dec_nom	28.615323997008	Nominal Dec [deg]
roll_nom	333.50781656768	Nominal Roll [deg]
revision	2	Processing version of data
ontime	9967.6560332179	Sum of GTIs [s]
livetime	9841.4395707234	Livetime [s]
ontime0	9967.532913208	Sum of GTIs [s]
ontime1	9967.5739532113	Sum of GTIs [s]
ontime2	9967.6149932146	Sum of GTIs [s]
ontime3	9967.6560332179	Sum of GTIs [s]
ontime6	9967.7381132245	Sum of GTIs [s]
ontime7	9967.6970732212	Sum of GTIs [s]
l2events	59735	Number of level 2 events



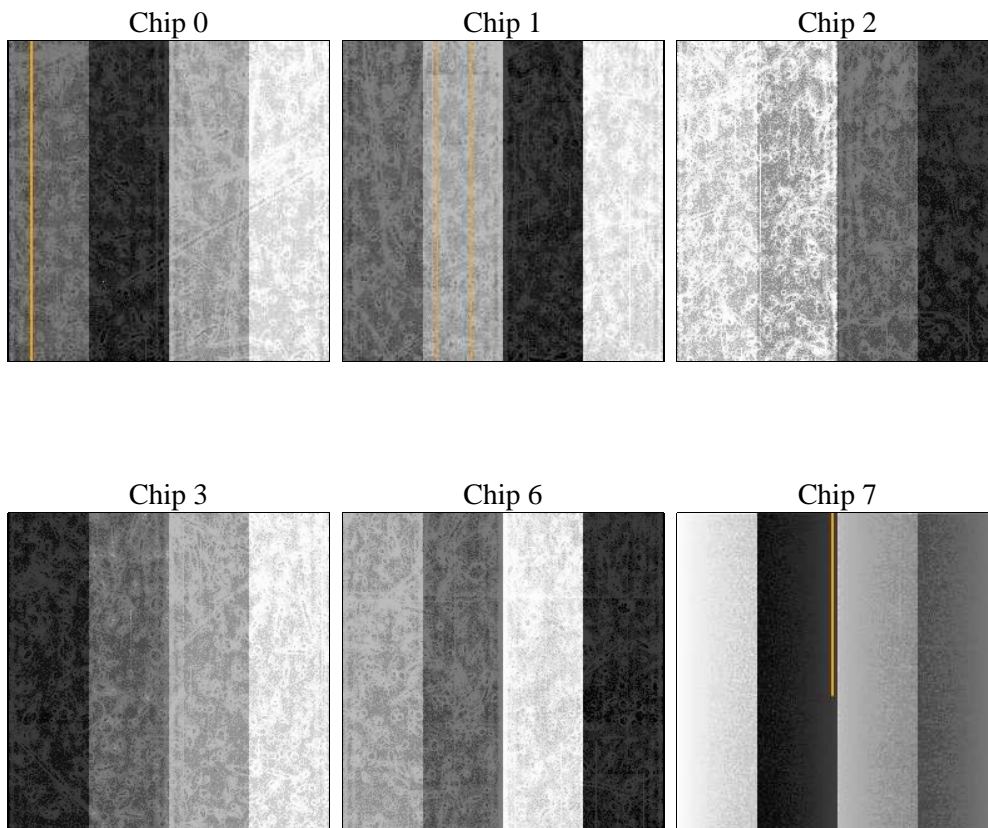
2 OBI

2.1 OBI

2.1.1 Images



2.1.2 Bias



2.1.3 Parameters

obi_num	0	Obi number	sched_exp_time	10000.000000	[s] Scheduled observation exposure time
ascdsver	8.4.3	Processing system revision	ontime	9967.6560332179	Sum of GTIs [s]
caldsver	4.4.8	 	ontime0	9967.532913208	Sum of GTIs [s]
date	2012-02-29T12:44:34	Date and time of file creation	ontime1	9967.5739532113	Sum of GTIs [s]
revision	2	Processing version of data	ontime2	9967.6149932146	Sum of GTIs [s]
			ontime3	9967.6560332179	Sum of GTIs [s]
			ontime6	9967.7381132245	Sum of GTIs [s]
			ontime7	9967.6970732212	Sum of GTIs [s]
			l1events	349844	Number of level 1 events

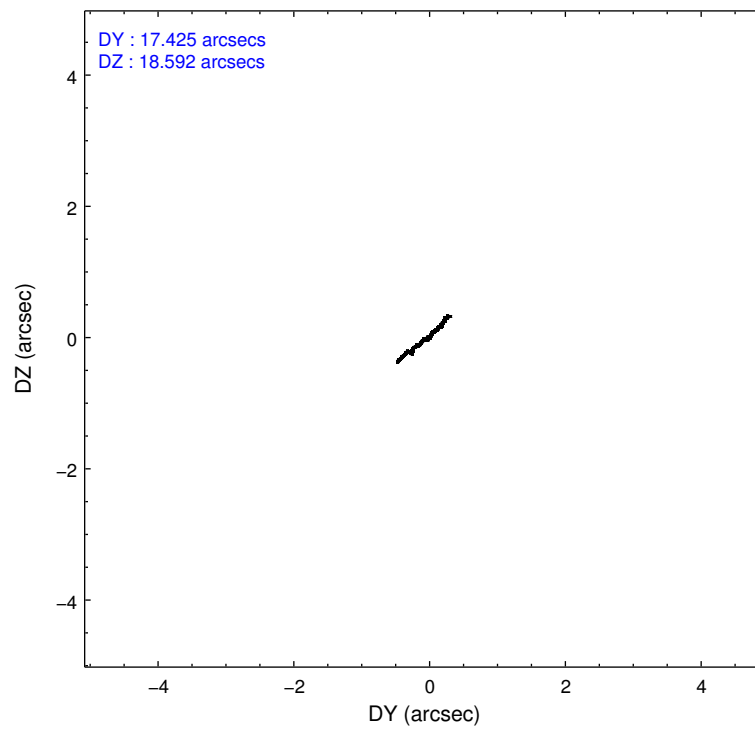
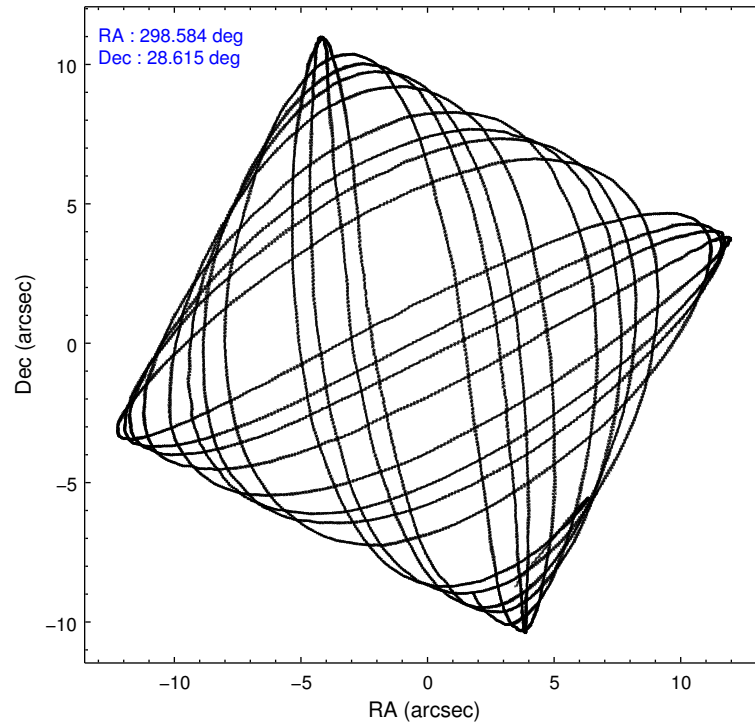
2.1.4 Events

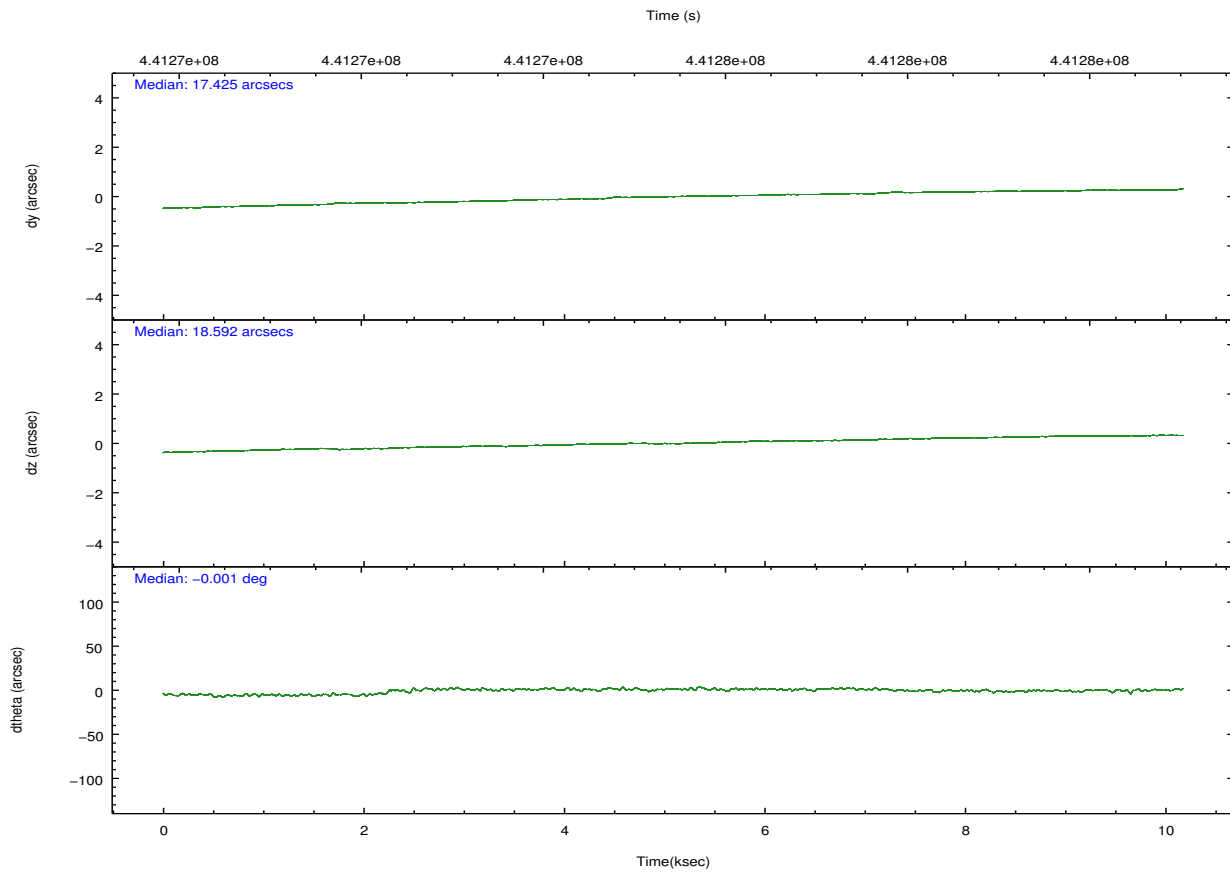
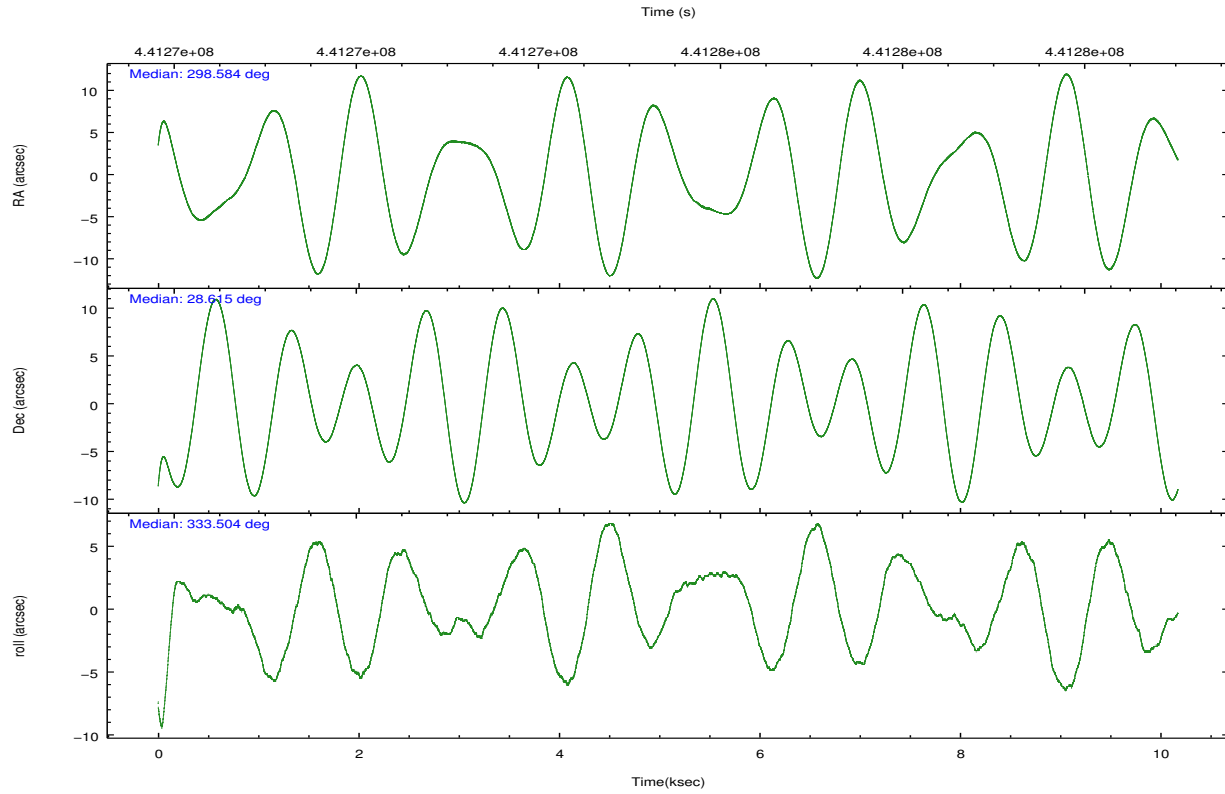
	ccd 0	ccd 1	ccd 2	ccd 3	ccd 6	ccd 7		ccd 0	ccd 1	ccd 2	ccd 3	ccd 6	ccd 7
level 1 events	53188	56860	60003	56628	58439	64726	grade 0 events	2731	2625	2750	2590	2568	3242
rejected events	46147	49715	53027	49908	51424	33106		5%	4%	4%	4%	4%	5%
rejected %	86%	87%	88%	88%	87%	51%	grade 1 events	43	22	37	44	26	95
								0%	0%	0%	0%	0%	0%
							grade 2 events	1690	1605	1682	1511	1657	6824
								3%	2%	2%	2%	2%	10%
							grade 3 events	726	727	684	728	649	2847
								1%	1%	1%	1%	1%	4%
							grade 4 events	653	685	713	658	701	2864
								1%	1%	1%	1%	1%	4%
							grade 5 events	2157	2355	2089	2383	2547	6873
								4%	4%	3%	4%	4%	10%
							grade 6 events	1252	1505	1151	1235	1440	15851
								2%	2%	1%	2%	2%	24%
							grade 7 events	43936	47336	50897	47479	48851	26130
								82%	83%	84%	83%	83%	40%

2.2 Compared Parameters

Parameter	Planned	Actual	Parameter	Planned	Actual
Instrument	ACIS	ACIS	Obspar format version number	7	7
Detector	ACIS-012367	ACIS-012367	Obspar file type	PREDICTED	ACTUAL
Grating	NONE	NONE	Obspar update status	NONE	UPDATED
Data mode	VFAINT	VFAINT	CCD I0 on	Y	Y
Observation mode	POINTING	POINTING	CCD I1 on	Y	Y
[deg] Pointing RA	298.552834	298.5841039818187	CCD I2 on	Y	Y
[deg] Pointing Dec	28.613578	28.6153239970081	CCD I3 on	Y	Y
[deg] Pointing Roll	333.314114	333.5078165676784	CCD S0 on	N	N
[mm] SIM focus pos	-0.782348	-0.7809083437167272	CCD S1 on	N	N
[mm] SIM defocus	0	0.001439871863259334	CCD S2 on	O2	Y
[mm] SIM translation stage pos	-233.592463	-233.5874344608287	CCD S3 on	O1	Y
[mm] SIM translation stage offset	0	-0.005018542100998502	CCD S4 on	N	N
[s] Observation start time (MET)	441270505.184000	441269283.51973	CCD S5 on	N	N
Observation start date	2011-12-26T07:07:19	2011-12-26T06:48:03	Number of optional ACIS chips dropped	0	0
[s] Observation end time (MET)	441280505.184000	441281401.07037	On-chip summing requested	N	N
Observation end date	2011-12-26T09:53:59	2011-12-26T10:10:01	Subarray requested	NONE	NONE
Read mode	TIMED	TIMED	Alternating exposures requested	N	N
			[s] Primary exposure time	0.000000	3.2

2.3 Aspect



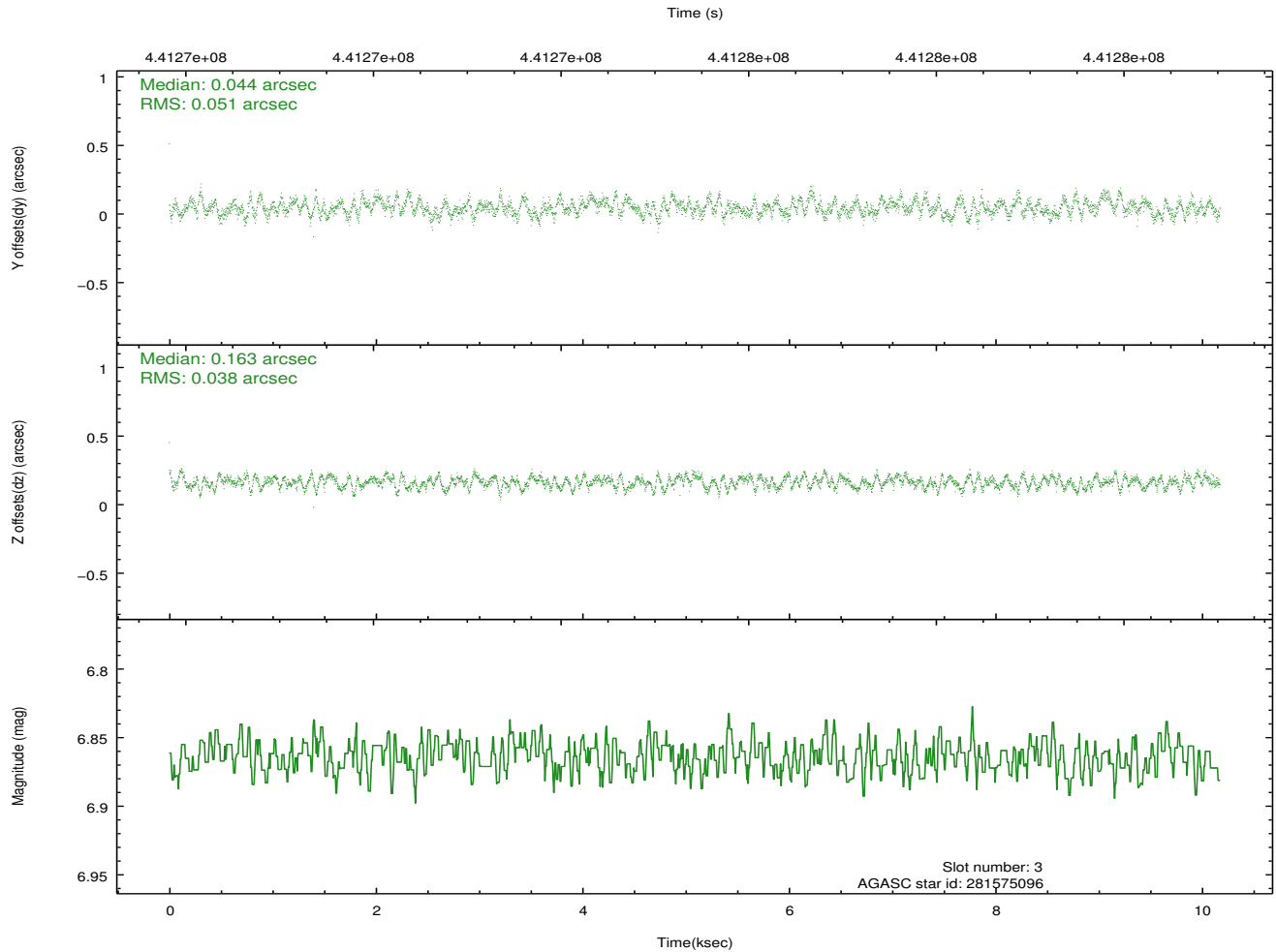
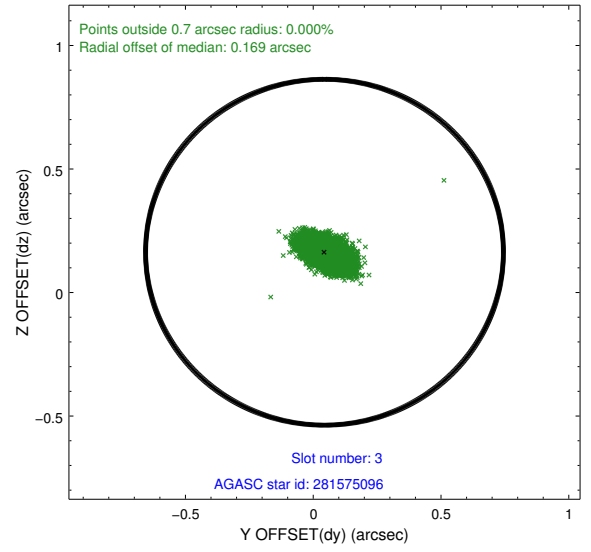
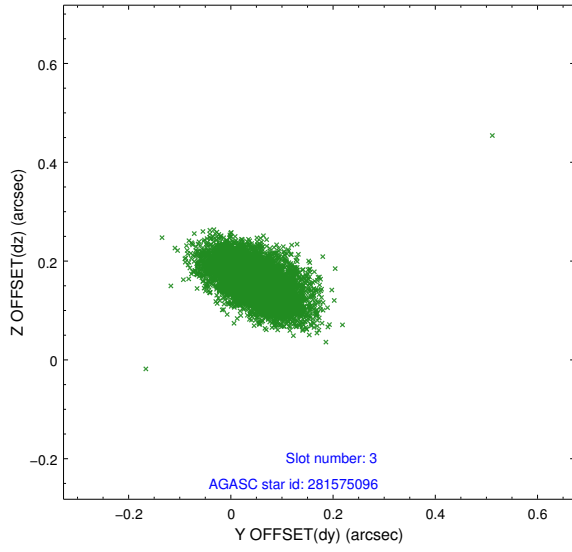


Slot Statistics

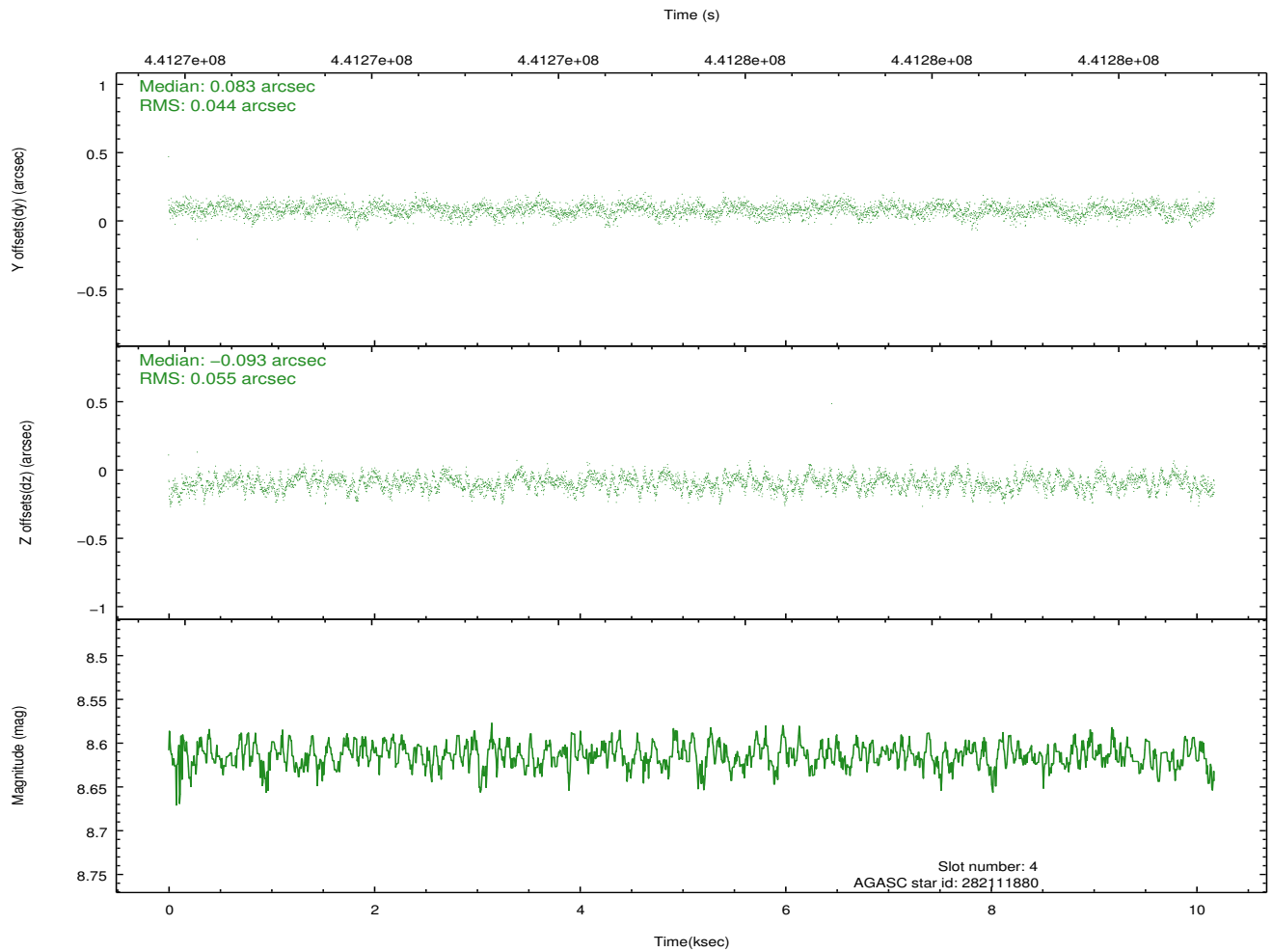
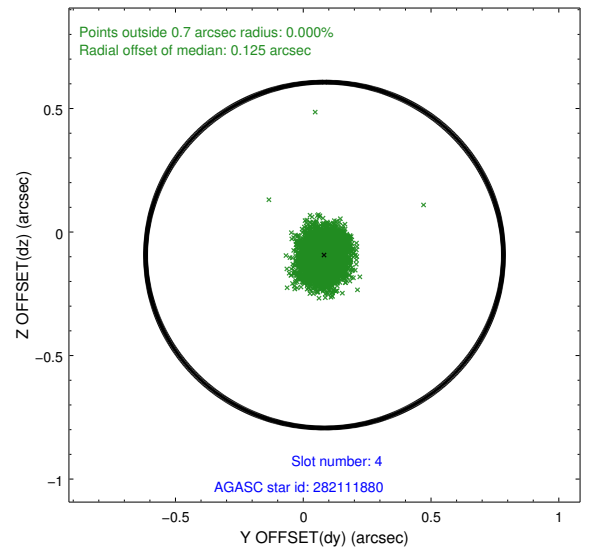
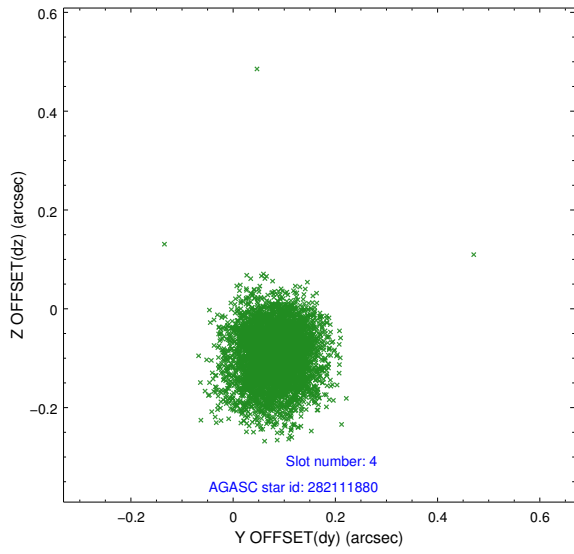
slot	status	id	mag	n_pts	med_dy	med_dz	dr1	dr2	ra	dec	mean_y	mean_z
0	FID	ACIS-I-1	7.03	2482	-0.079	0.023	0.013	0.035	0.000000	0.000000	921.92	-842.28
1	FID	ACIS-I-2	6.95	2482	-0.153	-0.086	0.012	0.017	0.000000	0.000000	-771.96	-849.07
2	FID	ACIS-I-4	6.97	2482	0.133	0.131	0.016	0.037	0.000000	0.000000	2141.80	1057.36
3	GUIDE	281575096	6.86	4964	0.044	0.163	0.067	0.111	298.316482	28.099603	160.49	-1989.10
4	GUIDE	282111880	8.61	4961	0.083	-0.093	0.074	0.121	298.216547	28.345551	-518.49	-1339.12
5	GUIDE	282218952	6.72	4964	-0.232	-0.213	0.073	0.122	299.348665	28.693894	2111.72	1394.37
6	GUIDE	281558240	8.28	4962	0.024	0.020	0.068	0.108	298.018930	28.100379	-684.93	-2408.87
7	GUIDE	282084656	9.15	4960	0.084	0.128	0.114	0.184	297.710188	28.599607	-2360.96	-1232.70

2.4 Star Slots

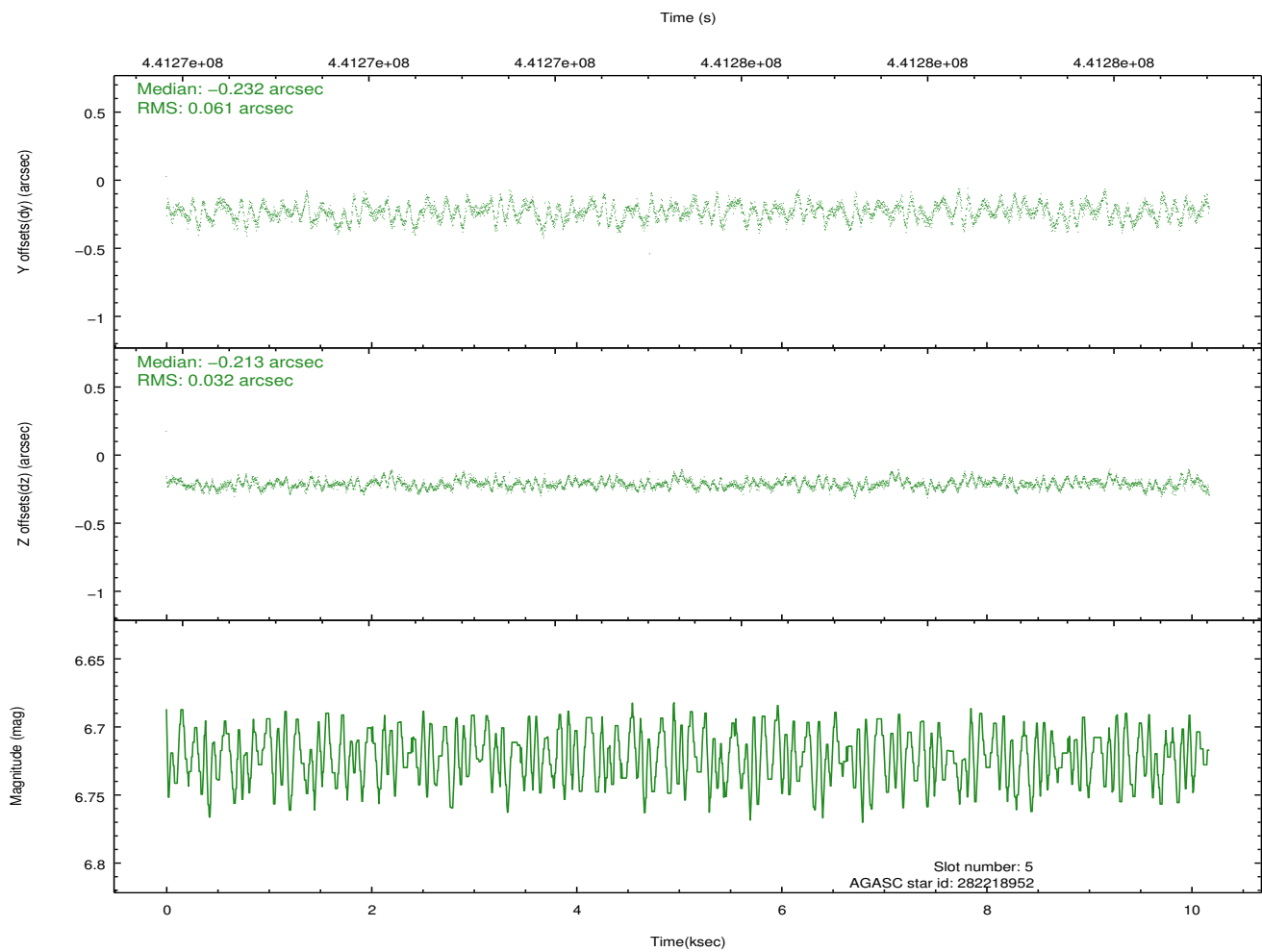
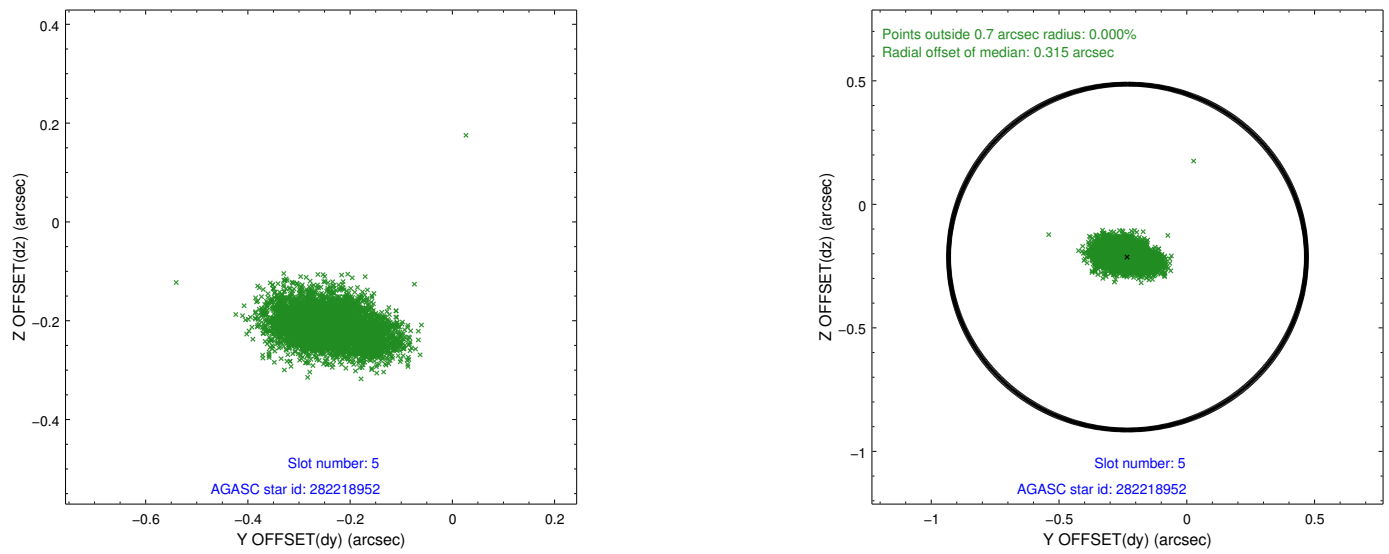
2.4.1 Slot 3



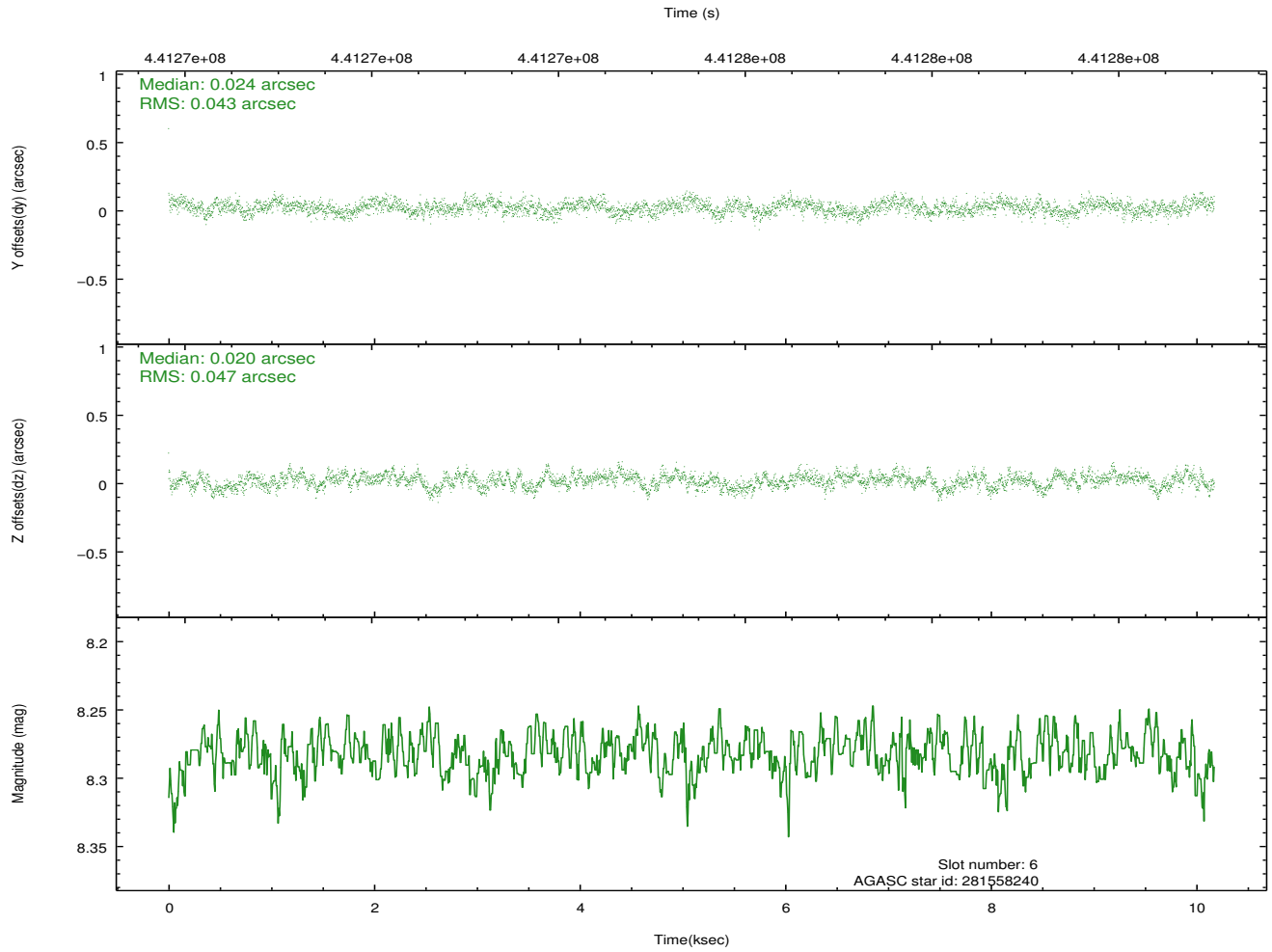
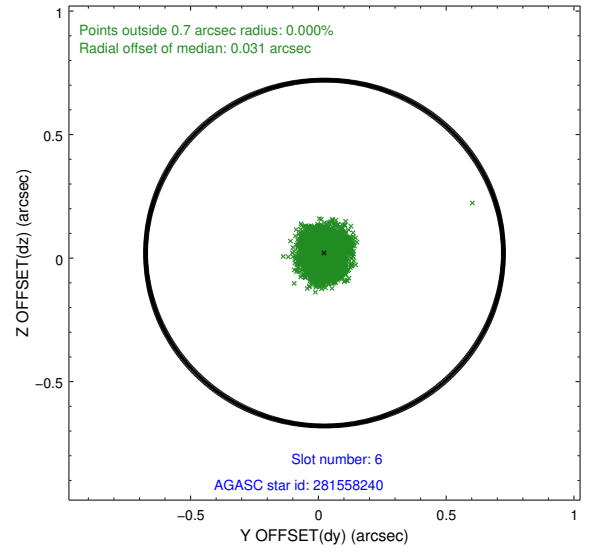
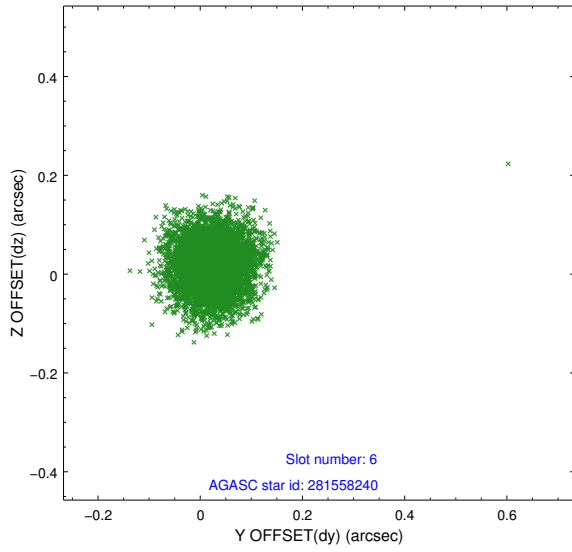
2.4.2 Slot 4



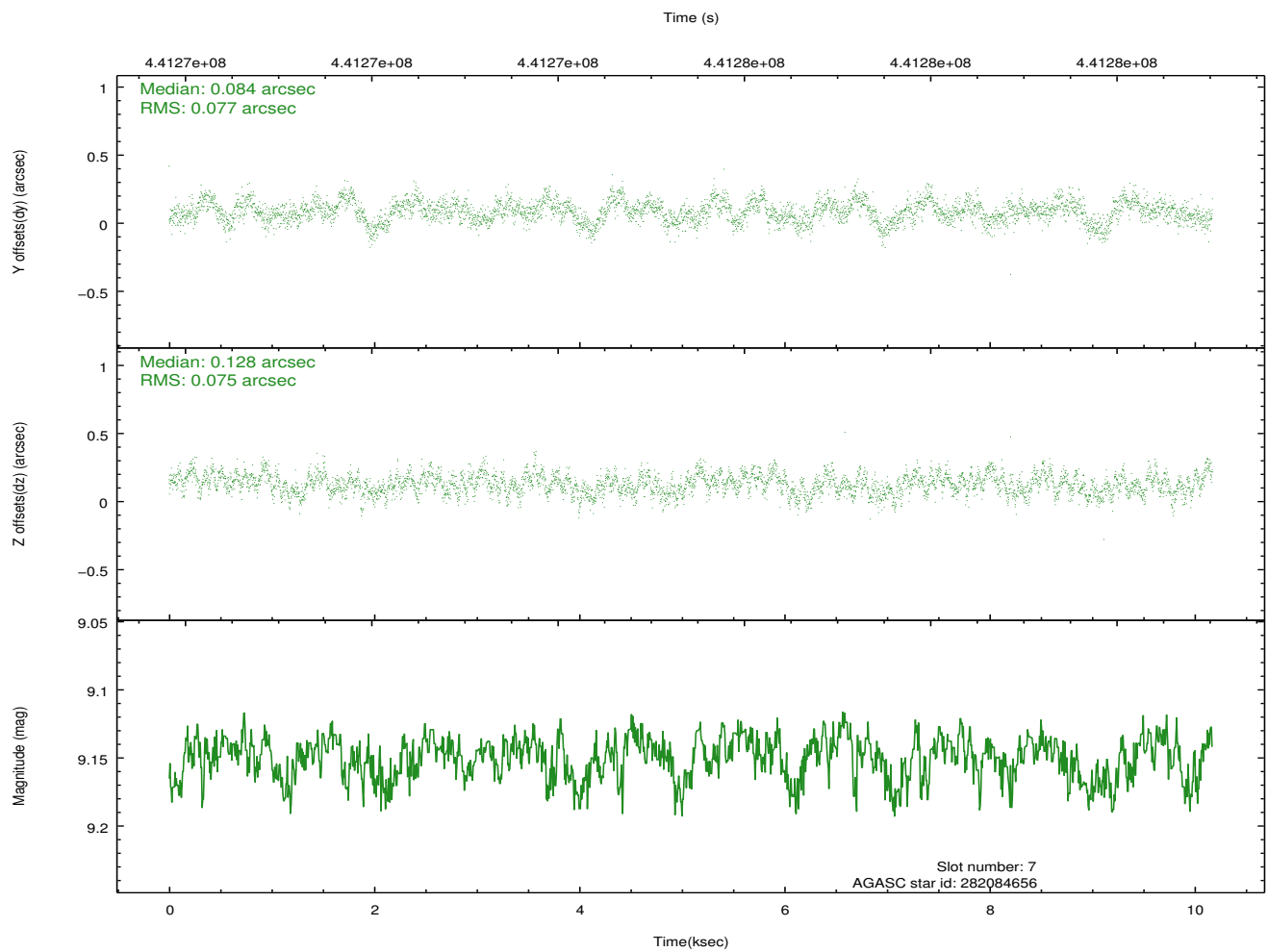
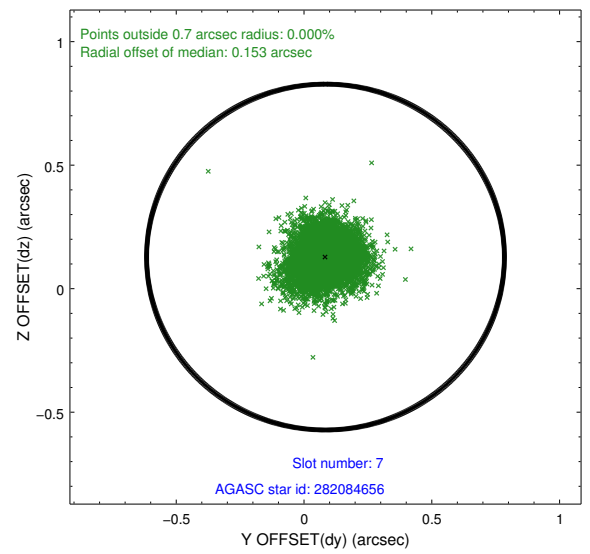
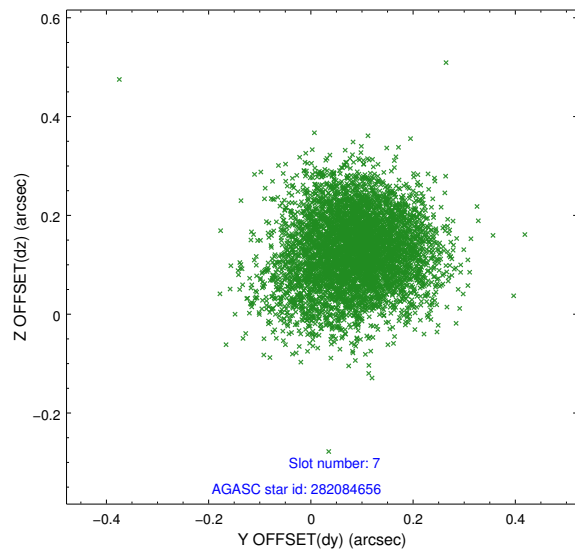
2.4.3 Slot 5



2.4.4 Slot 6

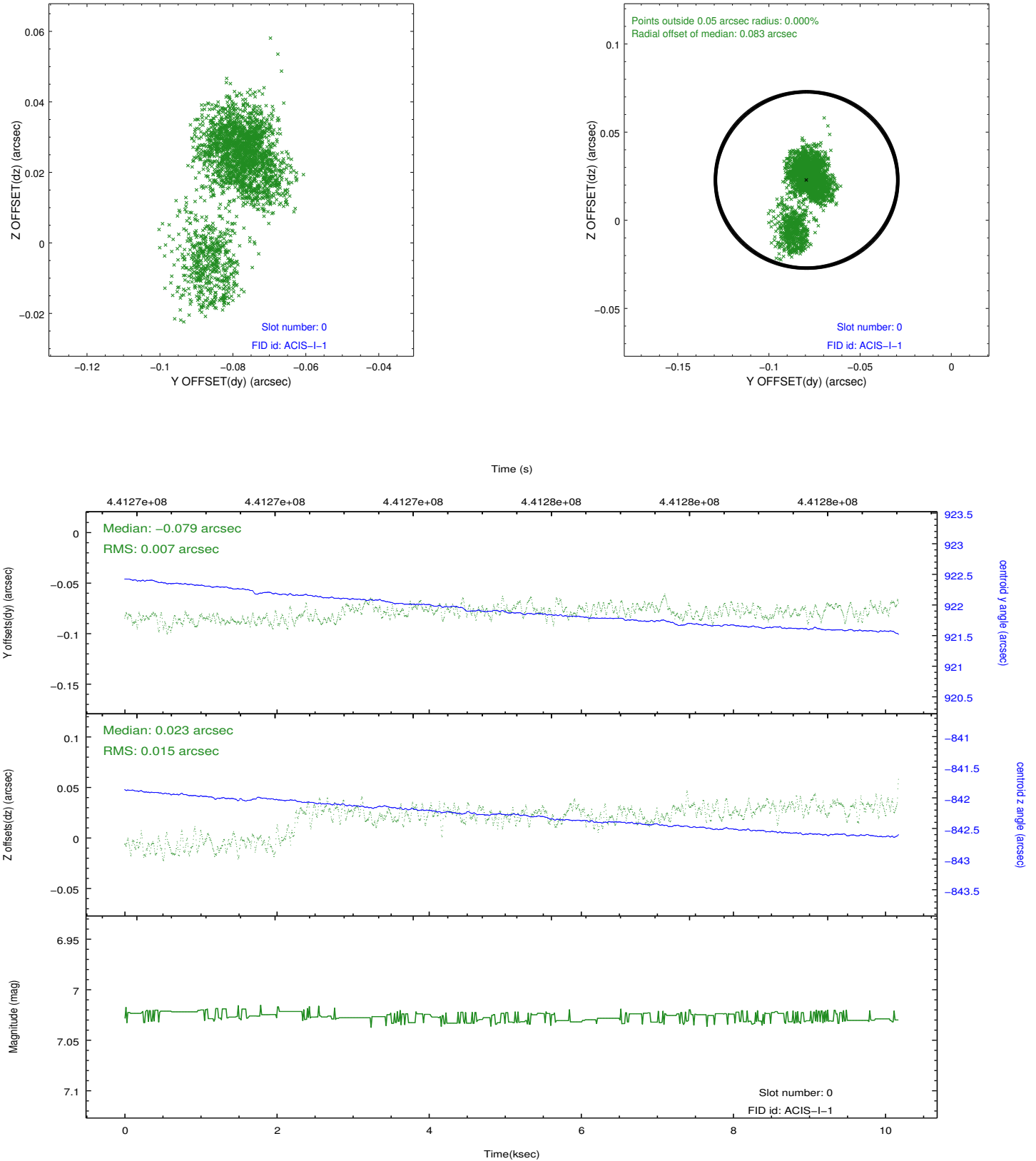


2.4.5 Slot 7

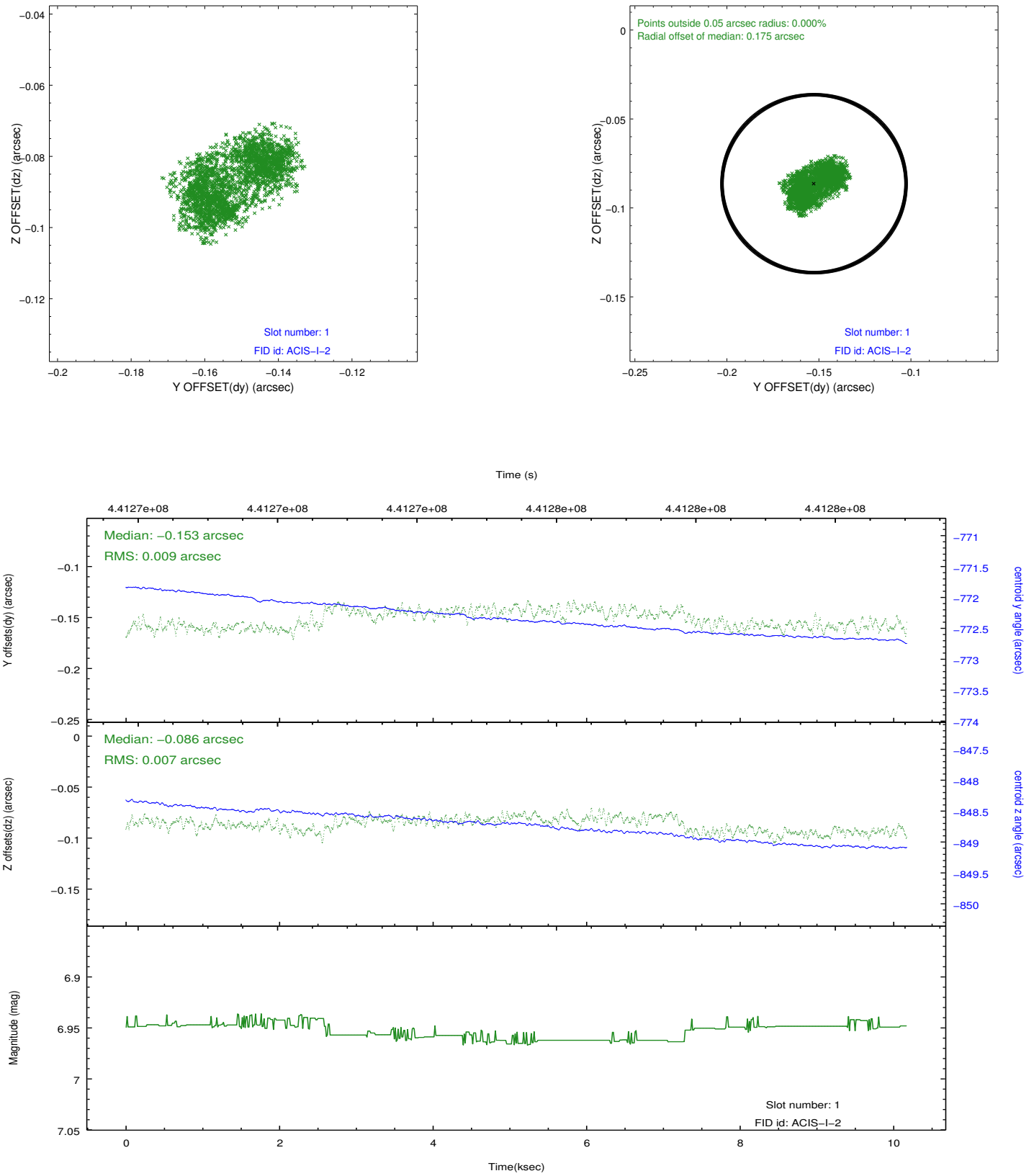


2.5 FID Slots

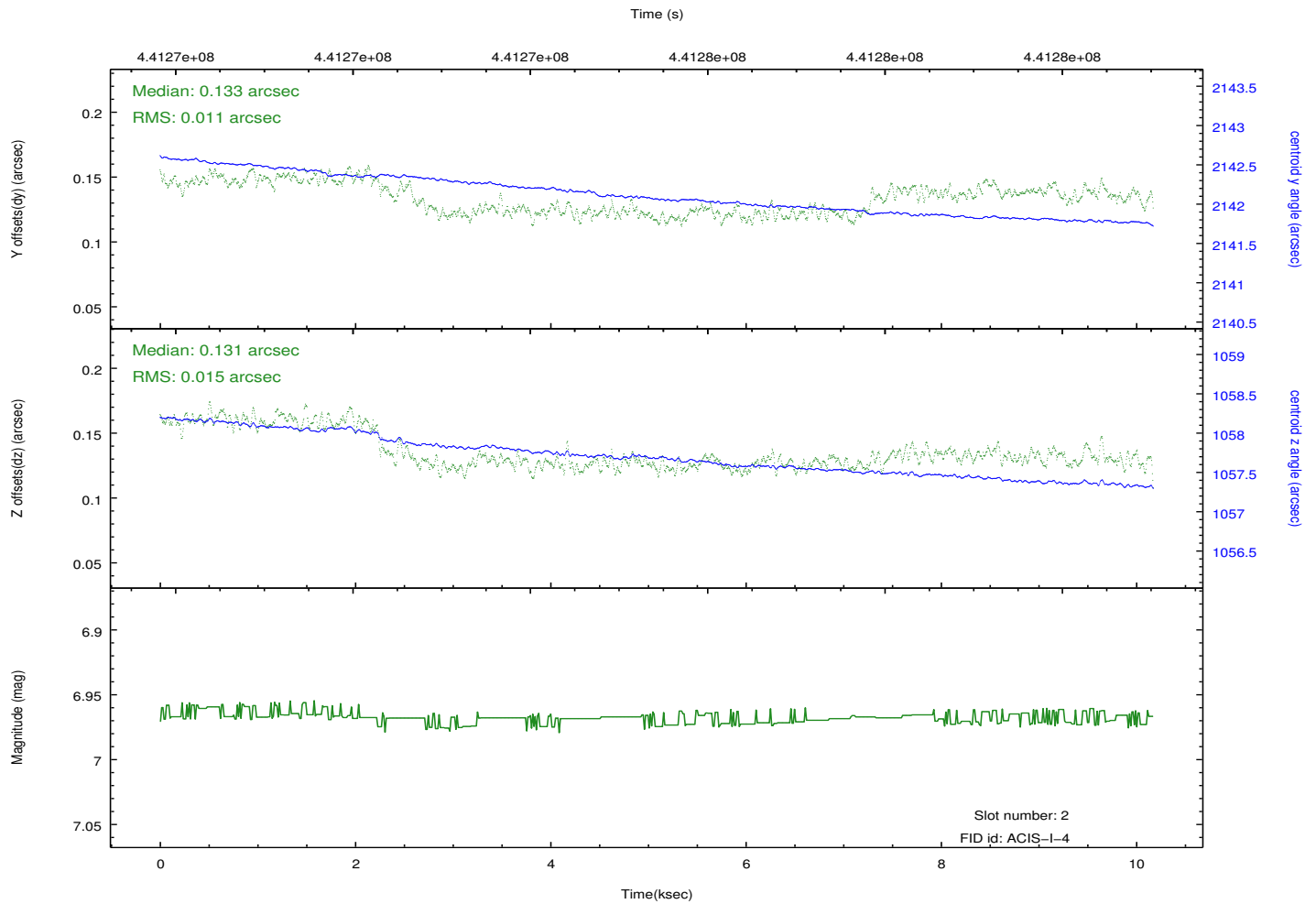
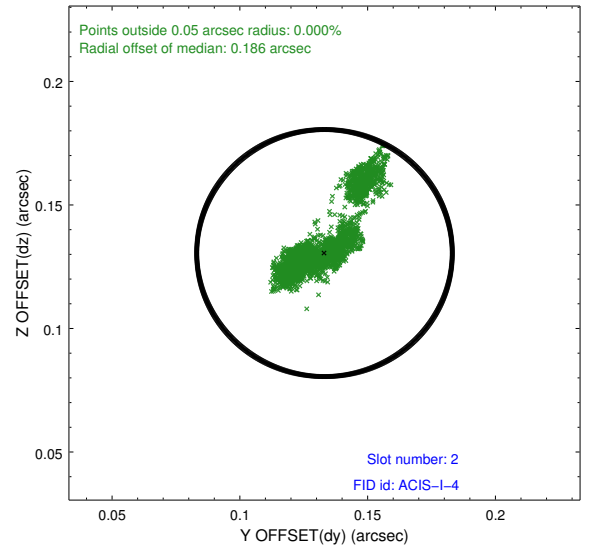
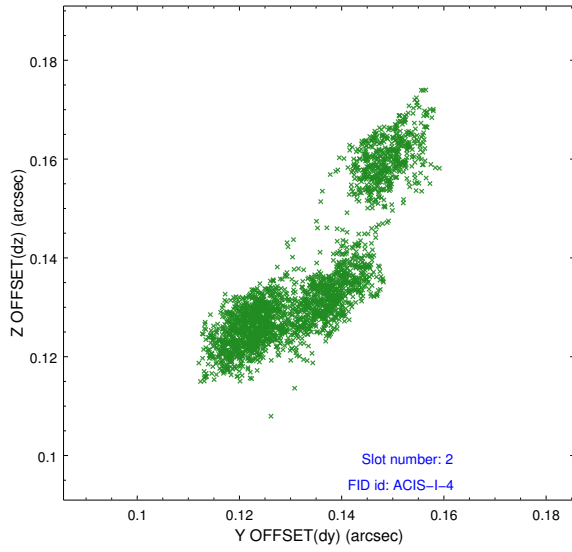
2.5.1 Slot 0



2.5.2 Slot 1



2.5.3 Slot 2



A Summary

A.1 Status

V&V Scientist	Jen Lauer
V&V Date (YYYY-MM-DD)	2012.02.29
V&V Edition	1
V&V Disposition and Status	OK
V&V Charge Time	9.9676560292244

A.2 Comments