

# V&V Reference Report

## L2 ASCDS Version : 8.4.5

Observation 12198 - L2 Version 2  
Chandra X-Ray Center

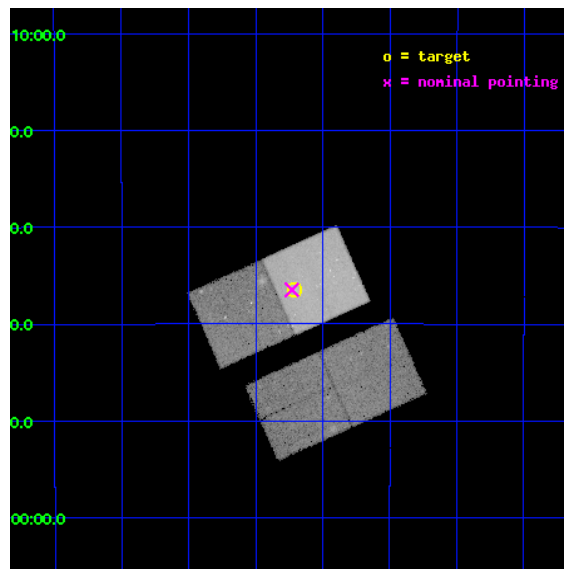
L2 Processing Date : Jul 7 2012

## Contents

<b>1</b>	<b>Front</b>	<b>2</b>
<b>2</b>	<b>OBI</b>	<b>3</b>
2.1	OBI . . . . .	3
2.1.1	Images . . . . .	3
2.1.2	Bias . . . . .	3
2.1.3	Parameters . . . . .	4
2.1.4	Events . . . . .	4
2.2	Compared Parameters . . . . .	5
2.3	Aspect . . . . .	6
2.4	Star Slots . . . . .	9
2.4.1	Slot 3 . . . . .	9
2.4.2	Slot 4 . . . . .	10
2.4.3	Slot 5 . . . . .	11
2.4.4	Slot 6 . . . . .	12
2.4.5	Slot 7 . . . . .	13
2.5	FID Slots . . . . .	14
2.5.1	Slot 0 . . . . .	14
2.5.2	Slot 1 . . . . .	15
2.5.3	Slot 2 . . . . .	16
<b>A</b>	<b>Summary</b>	<b>17</b>
A.1	Status . . . . .	17
A.2	Comments . . . . .	17

# 1 Front

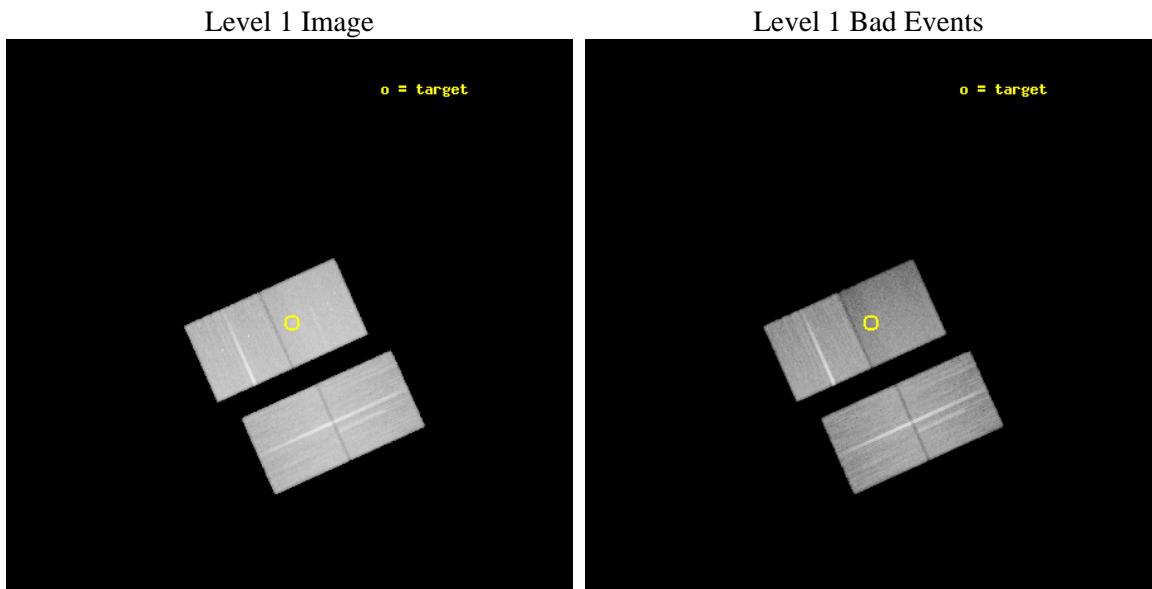
seq_num	900940	Sequence number
obs_id	12198	Observation id
title	Search for point sources in an extragalactic diffuse region	Propos
observer	Professor Gordon Garmire	Principal investigator
object	CXO 03 10 12.58-20 36 30.6	Source name
dtycle	0	&#160
cycle	P	events from which exps? Prim/Second/Both
ra_targ	47.5525	Observer's specified target RA [deg]
dec_targ	-20.608472	Observer's specified target Dec [deg]
ra_nom	47.557630322115	Nominal RA [deg]
dec_nom	-20.607833020671	Nominal Dec [deg]
roll_nom	335.82800367231	Nominal Roll [deg]
revision	2	Processing version of data
ontime	47091.854645193	Sum of GTIs [s]
livetime	46476.564895734	Livetime [s]
ontime2	47079.167514145	Sum of GTIs [s]
ontime3	47082.349584103	Sum of GTIs [s]
ontime6	47088.672594965	Sum of GTIs [s]
ontime7	47091.854645193	Sum of GTIs [s]
l2events	245291	Number of level 2 events



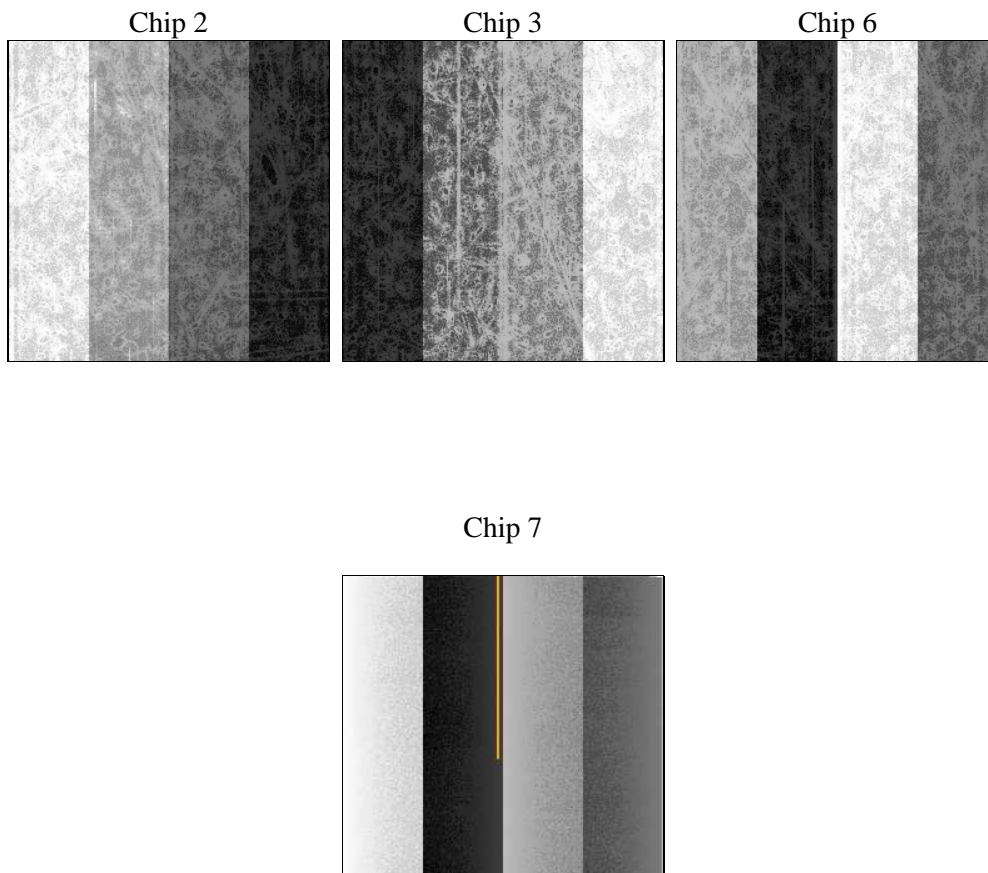
## 2 OBI

### 2.1 OBI

#### 2.1.1 Images



#### 2.1.2 Bias



### 2.1.3 Parameters

obi_num	0	Obi number	sched_exp_time	47037.000000	[s] Scheduled observation exposure time
ascdsver	8.4.5	Processing system revision	ontime	47091.854645193	Sum of GTIs [s]
caldbver	4.5.0	&#160	ontime2	47079.167514145	Sum of GTIs [s]
date	2012-07-07T18:21:45	Date and time of file creation	ontime3	47082.349584103	Sum of GTIs [s]
revision	2	Processing version of data	ontime6	47088.672594965	Sum of GTIs [s]
			ontime7	47091.854645193	Sum of GTIs [s]
			l1events	1269287	Number of level 1 events

### 2.1.4 Events

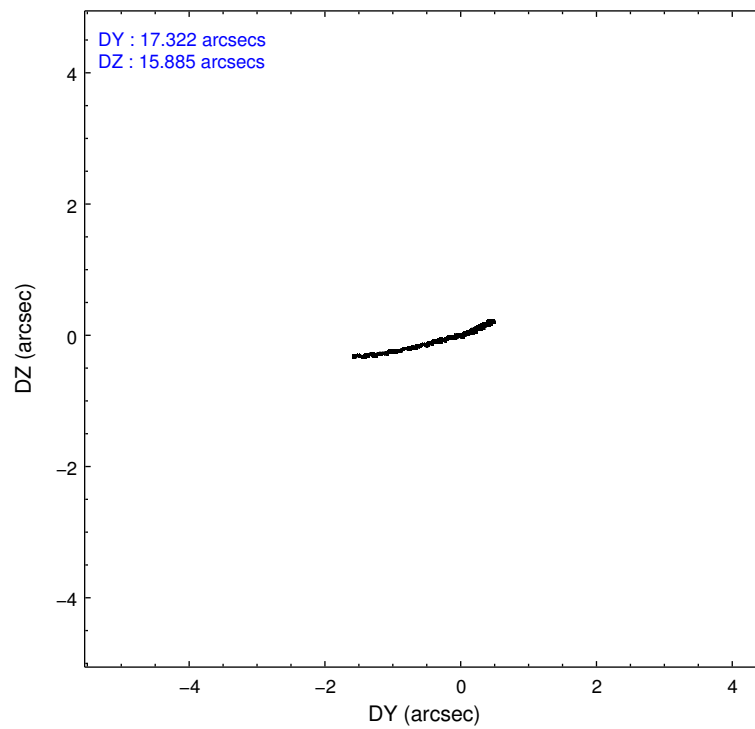
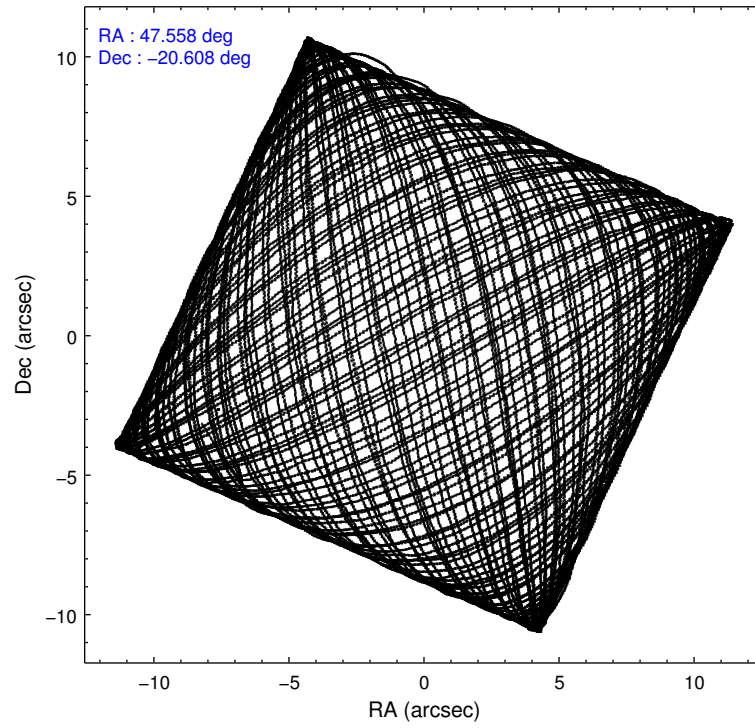
	ccd 2	ccd 3	ccd 6	ccd 7
level 1 events	318275	303149	316244	331619
rejected events	284685	271900	279325	168340
rejected %	89%	89%	88%	50%

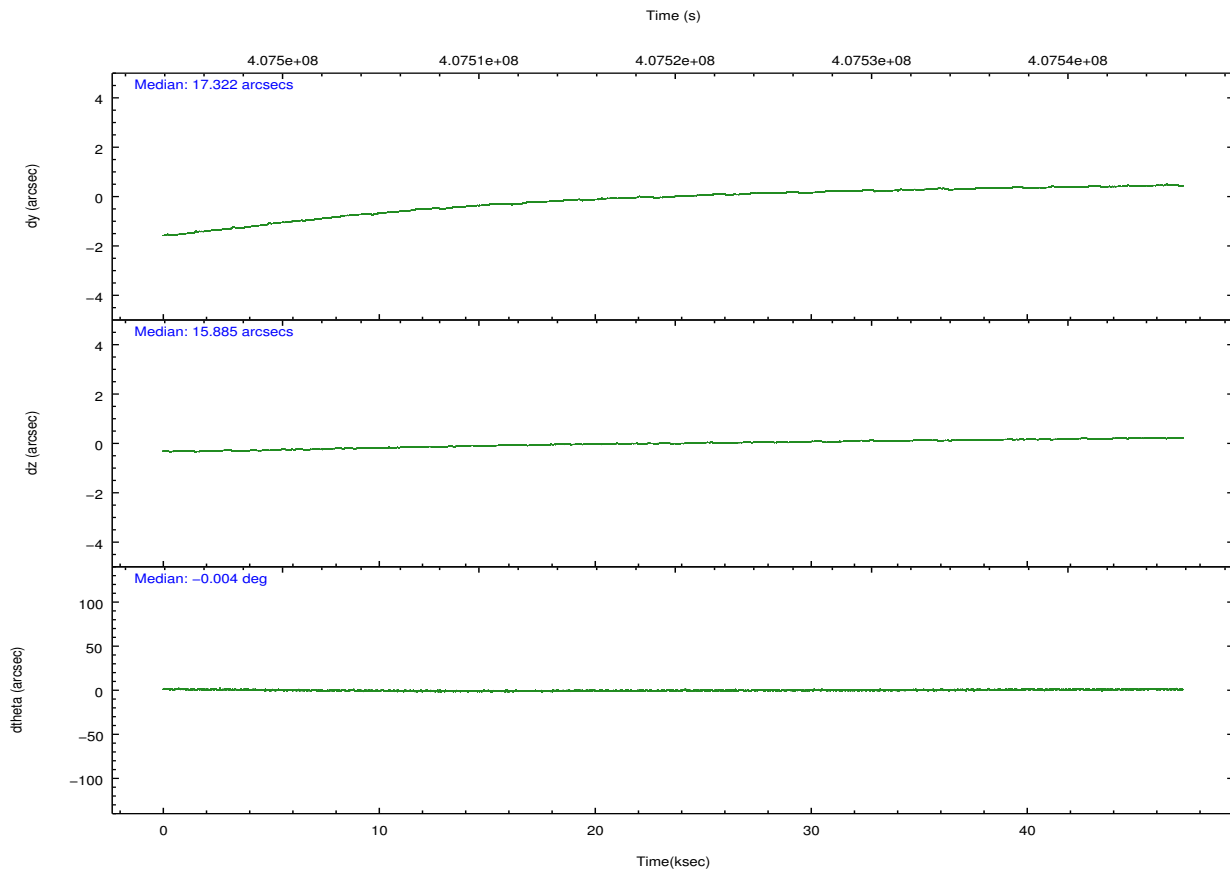
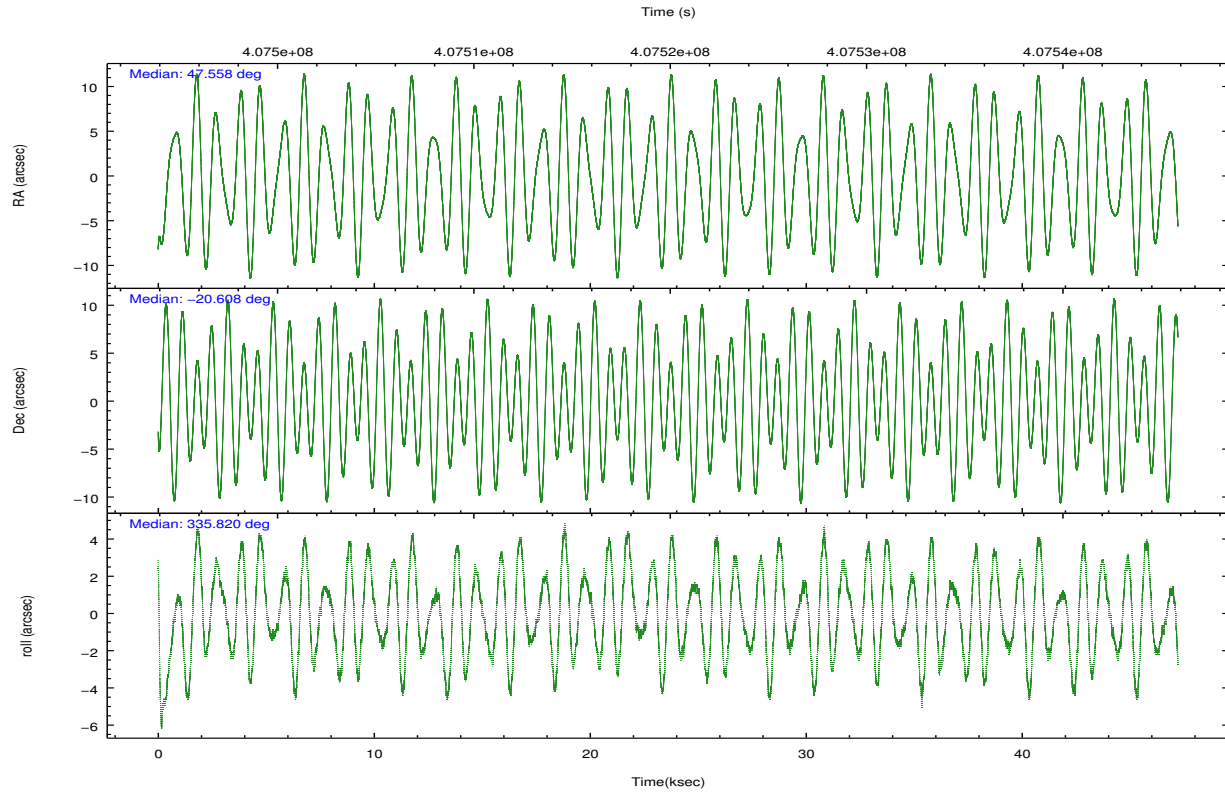
	ccd 2	ccd 3	ccd 6	ccd 7
grade 0 events	12285	11408	14052	17054
	3%	3%	4%	5%
grade 1 events	176	162	180	491
	0%	0%	0%	0%
grade 2 events	8427	6805	8339	35003
	2%	2%	2%	10%
grade 3 events	3380	3498	3586	14940
	1%	1%	1%	4%
grade 4 events	3447	3512	3642	14803
	1%	1%	1%	4%
grade 5 events	10292	12280	12094	34857
	3%	4%	3%	10%
grade 6 events	6052	6027	7301	81488
	1%	1%	2%	24%
grade 7 events	274216	259457	267050	132983
	86%	85%	84%	40%

## 2.2 Compared Parameters

Parameter	Planned	Actual	Parameter	Planned	Actual
Instrument	ACIS	ACIS	Obspar format version number	7	7
Detector	ACIS-2367	ACIS-2367	Obspar file type	PREDICTED	ACTUAL
Grating	NONE	NONE	Obspar update status	NONE	UPDATED
Data mode	VFAINT	VFAINT	Number of optional ACIS chips dropped	0	0
Observation mode	POINTING	POINTING	On-chip summing requested	N	N
[deg] Pointing RA	47.528612	47.5576303221151	Subarray requested	NONE	NONE
[deg] Pointing Dec	-20.610982	-20.60783302067093	Alternating exposures requested	N	N
[deg] Pointing Roll	335.661161	335.8280036723066	[s] Primary exposure time	0.000000	3.1
[mm] SIM focus pos	-0.684267	-0.6828225247311905			
[mm] SIM defocus	0	0.001444936568705701			
[mm] SIM translation stage pos	-190.132523	-190.1400660498719			
[mm] SIM translation stage offset	0	0.00754346686406393			
[s] Observation start time (MET)	407496460.184000	407495587.18164			
Observation start date	2010-11-30T09:26:34	2010-11-30T09:13:07			
[s] Observation end time (MET)	407543497.184000	407545040.35919			
Observation end date	2010-11-30T22:30:31	2010-11-30T22:57:20			
Read mode	TIMED	TIMED			

## 2.3 Aspect



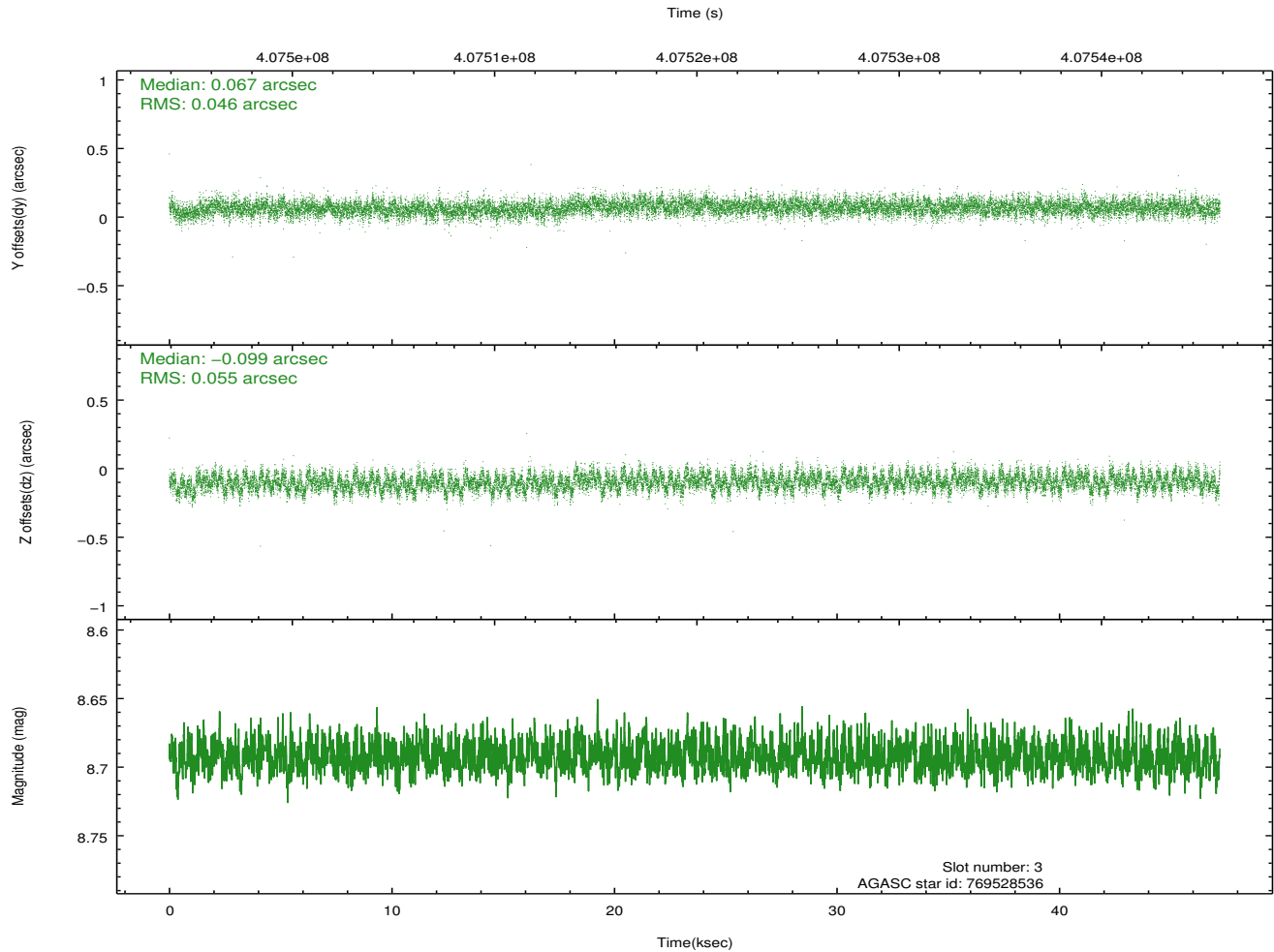
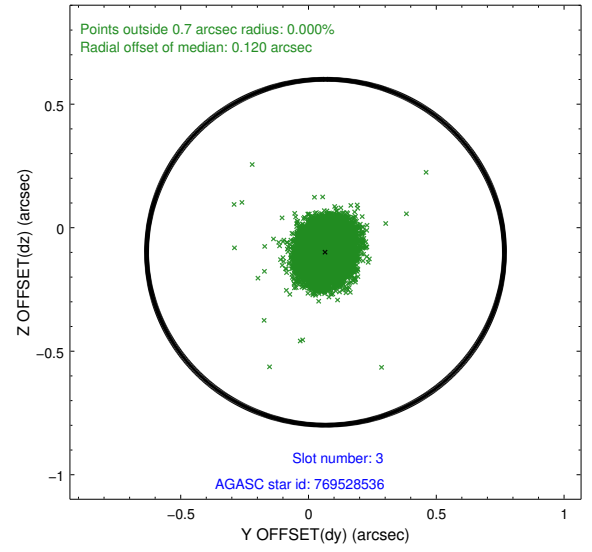
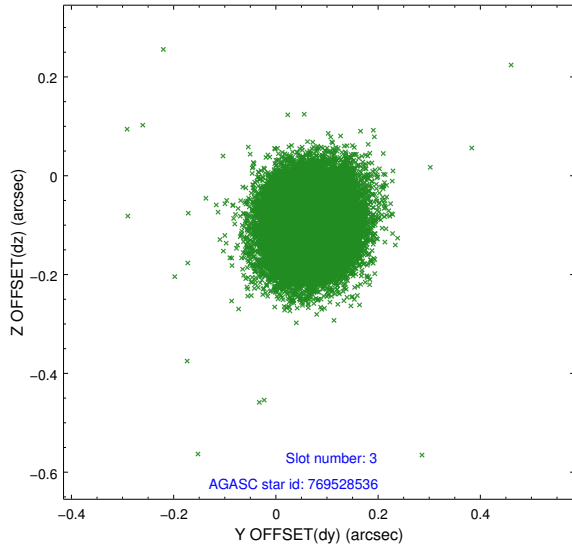


### Slot Statistics

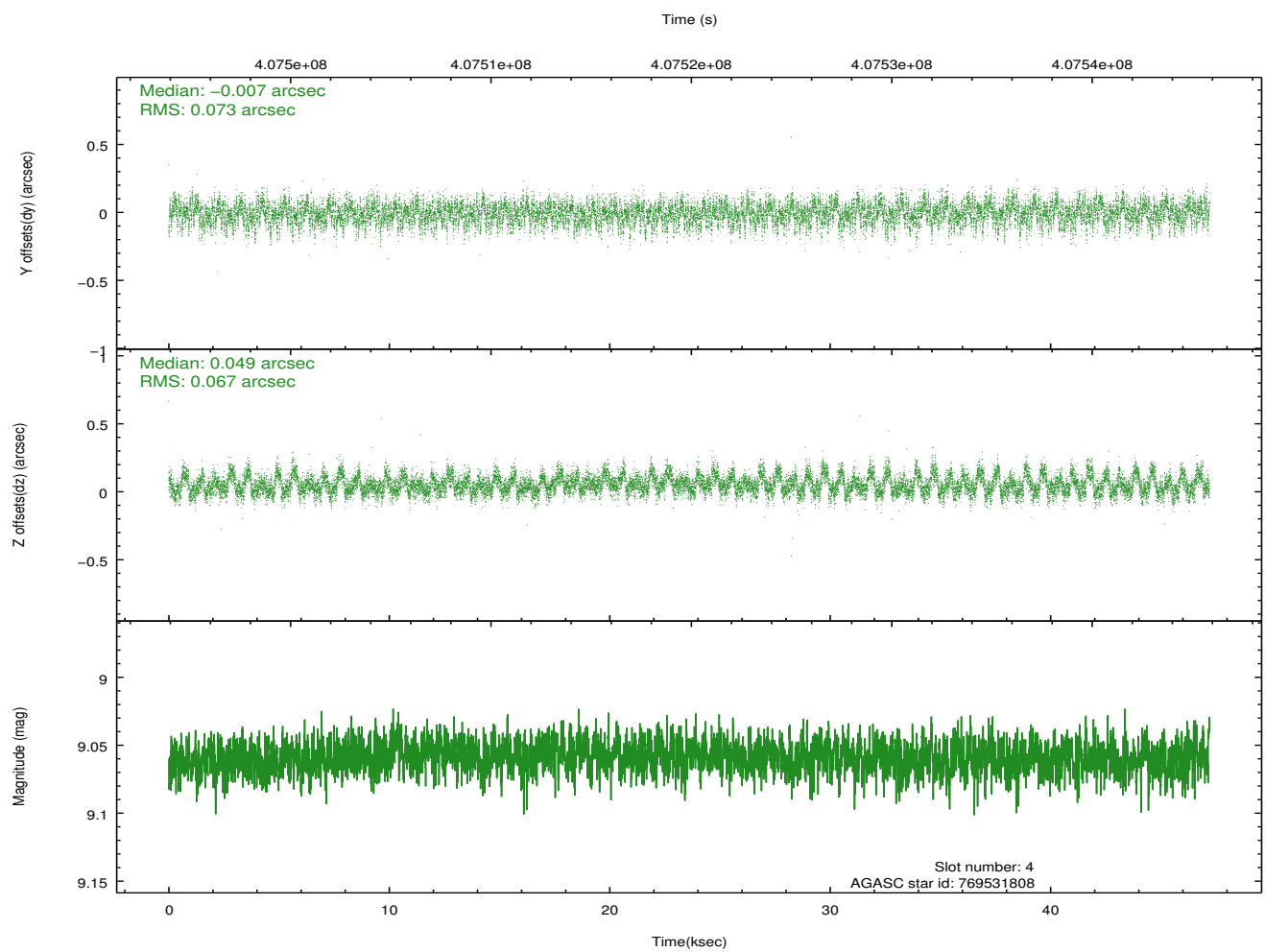
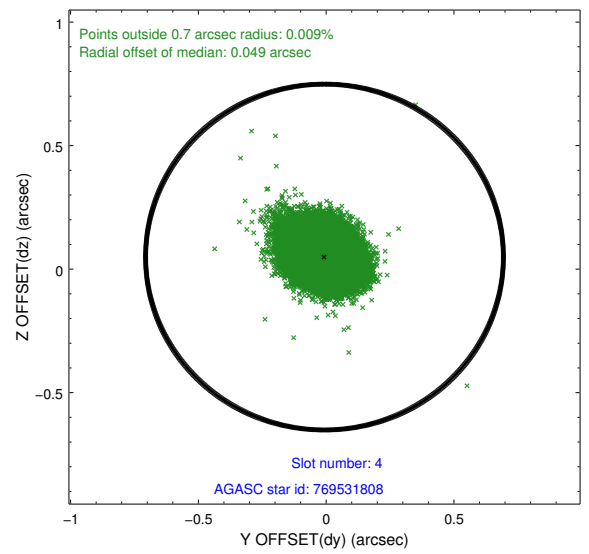
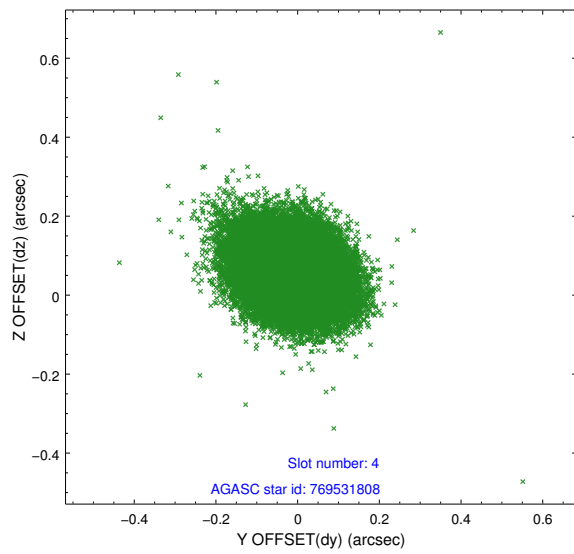
slot	status	id	mag	n_pts	med_dy	med_dz	dr1	dr2	ra	dec	mean_y	mean_z
0	FID	ACIS-S-2	6.93	11516	-0.096	-0.066	0.007	0.014	0.000000	0.000000	-770.28	-1737.33
1	FID	ACIS-S-4	7.01	11514	0.153	0.027	0.009	0.025	0.000000	0.000000	2143.26	171.24
2	FID	ACIS-S-6	7.15	11516	-0.086	0.046	0.009	0.031	0.000000	0.000000	391.72	808.65
3	GUIDE	769528536	8.69	23020	0.067	-0.099	0.076	0.122	46.820282	-20.648792	-2115.31	-1112.58
4	GUIDE	769531808	9.06	23018	-0.007	0.049	0.104	0.168	47.771077	-21.398694	1910.09	-2249.10
5	GUIDE	770451224	7.77	23025	-0.091	-0.142	0.062	0.099	48.005011	-20.791582	1730.09	66.31
6	GUIDE	770451544	7.54	23027	0.021	0.049	0.083	0.139	48.064077	-20.619593	1658.18	712.95
7	GUIDE	769530672	8.12	23028	0.005	0.136	0.071	0.113	47.403721	-20.012503	-1272.41	1788.58

## 2.4 Star Slots

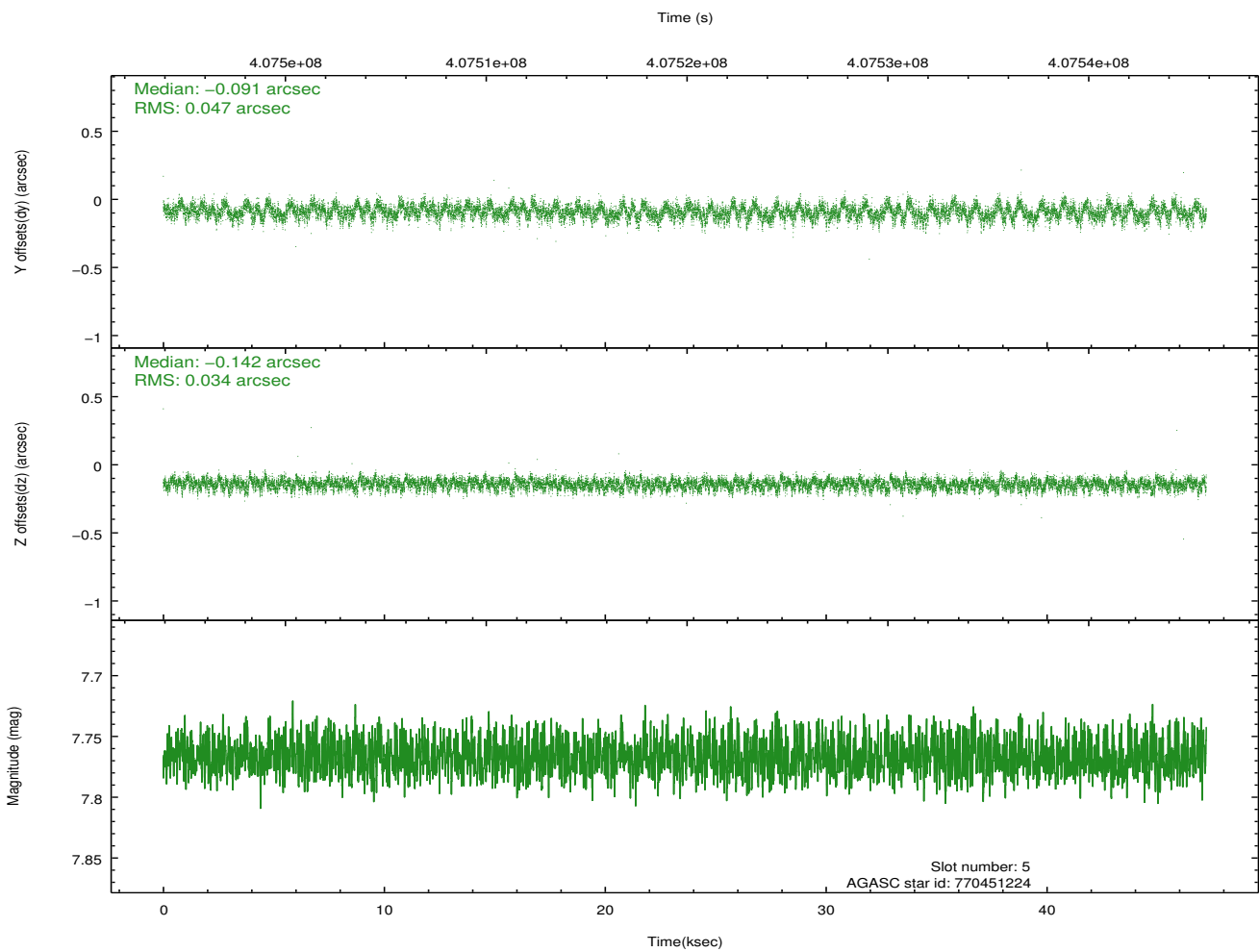
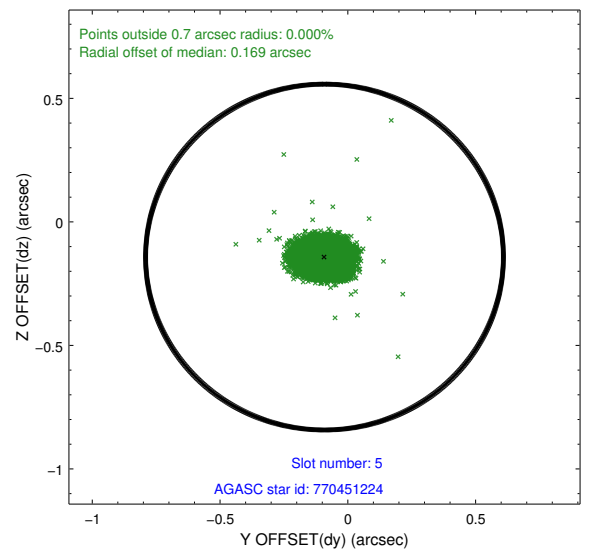
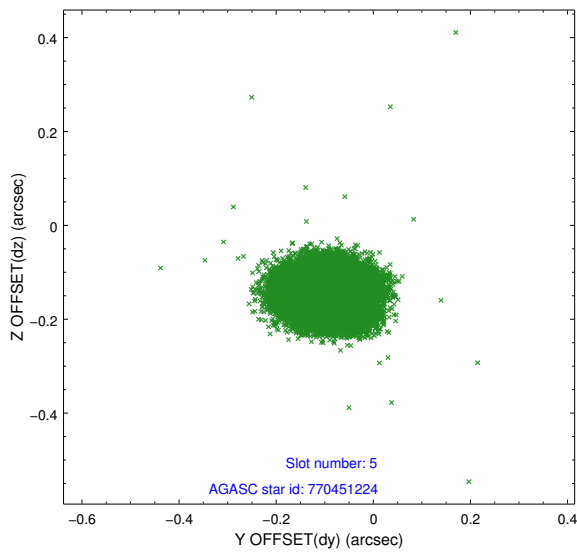
### 2.4.1 Slot 3



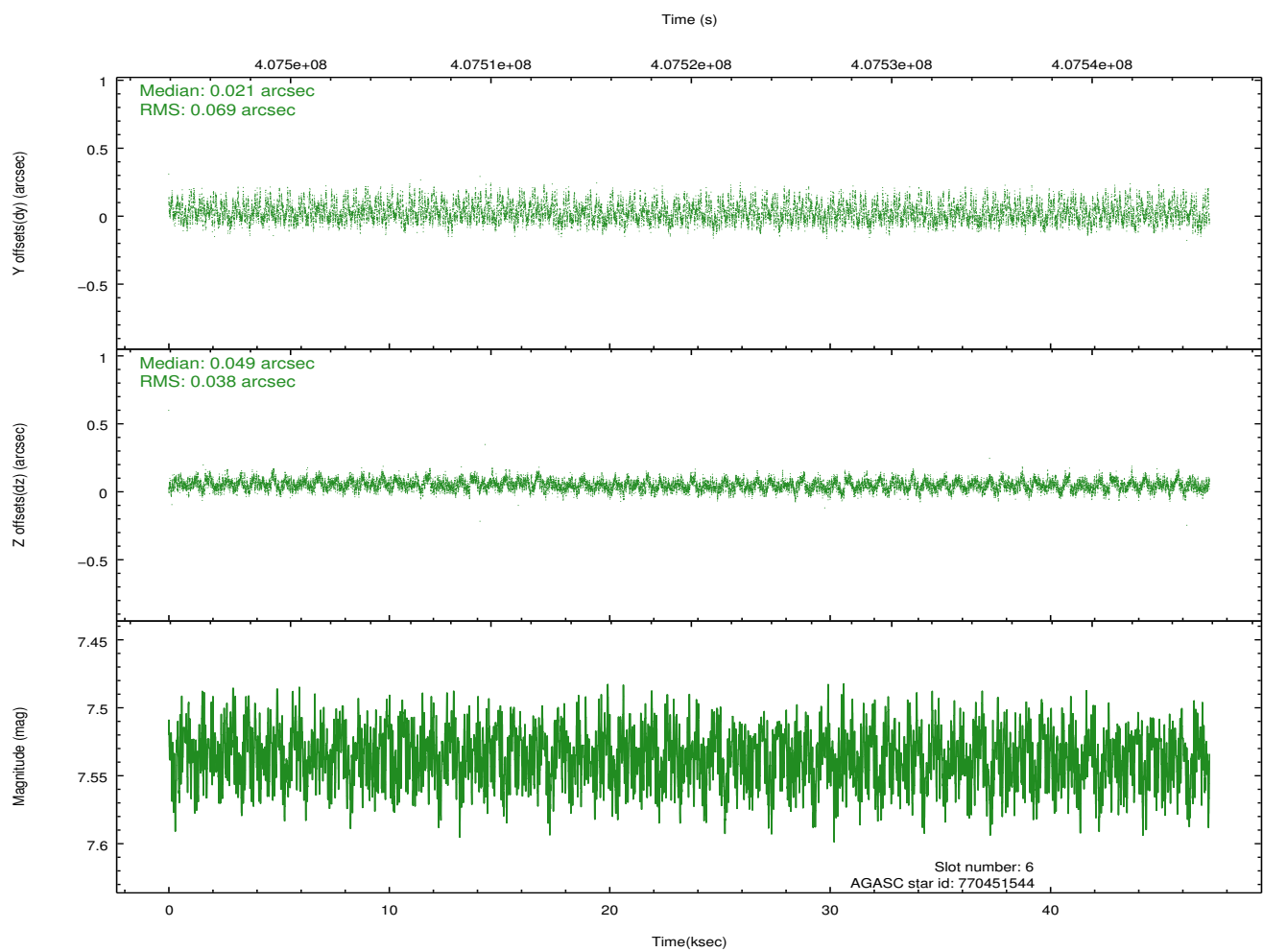
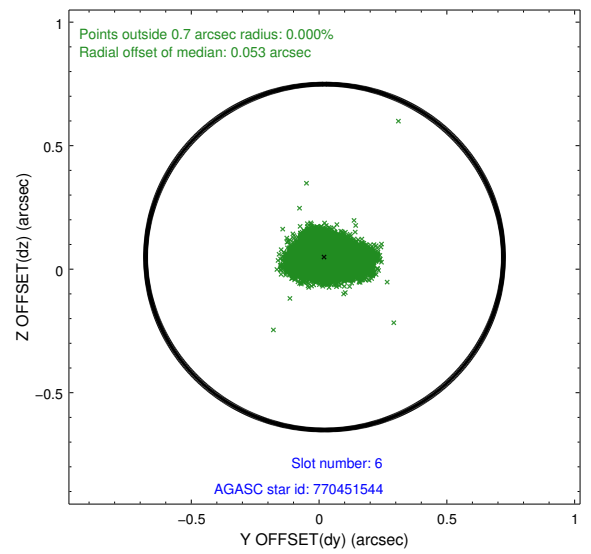
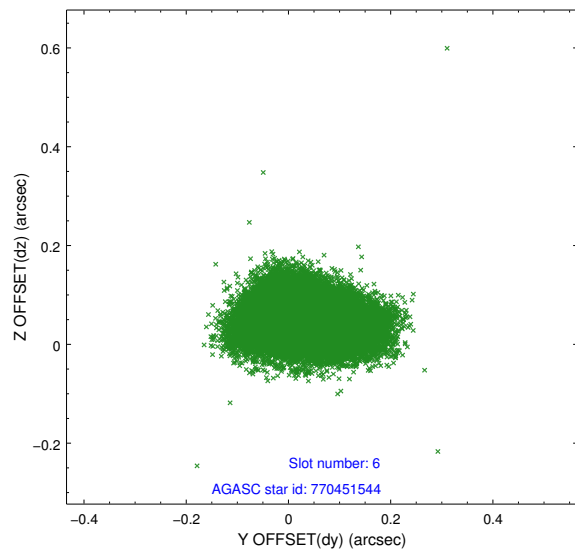
## 2.4.2 Slot 4



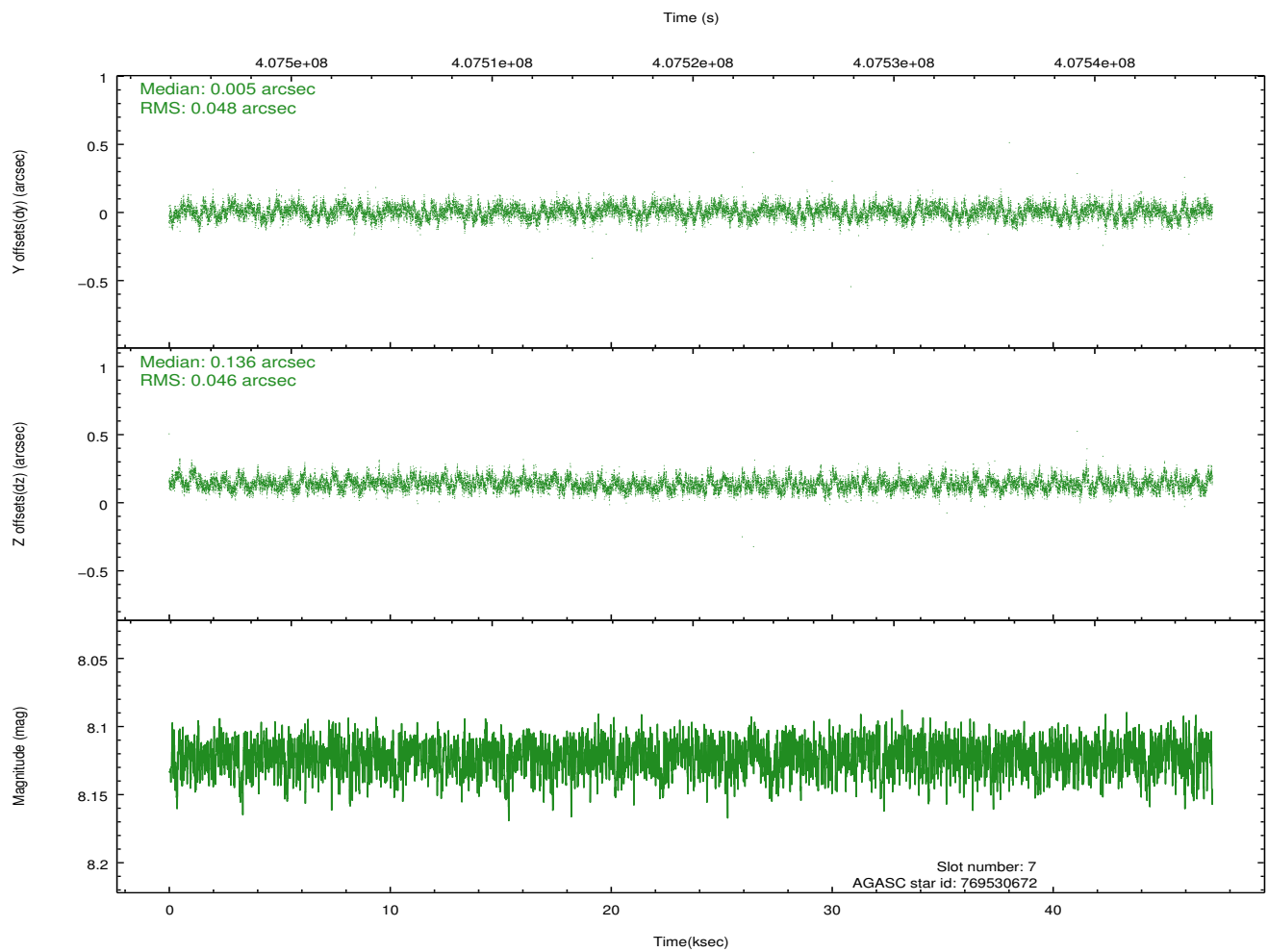
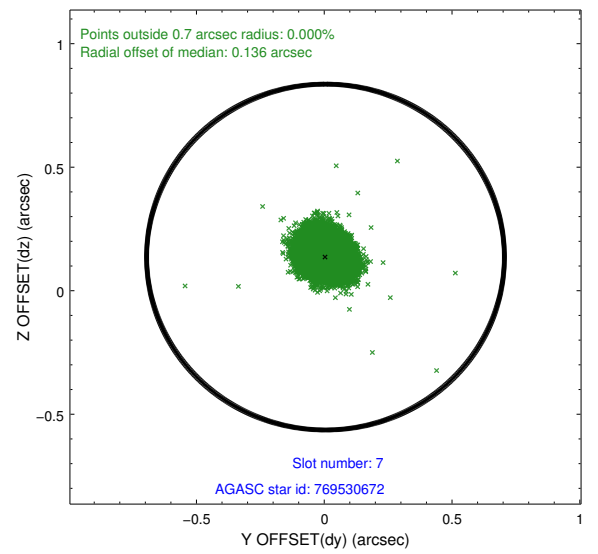
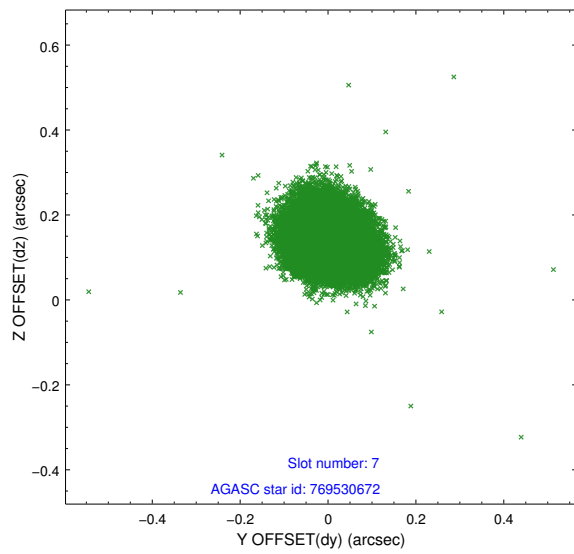
### 2.4.3 Slot 5



## 2.4.4 Slot 6

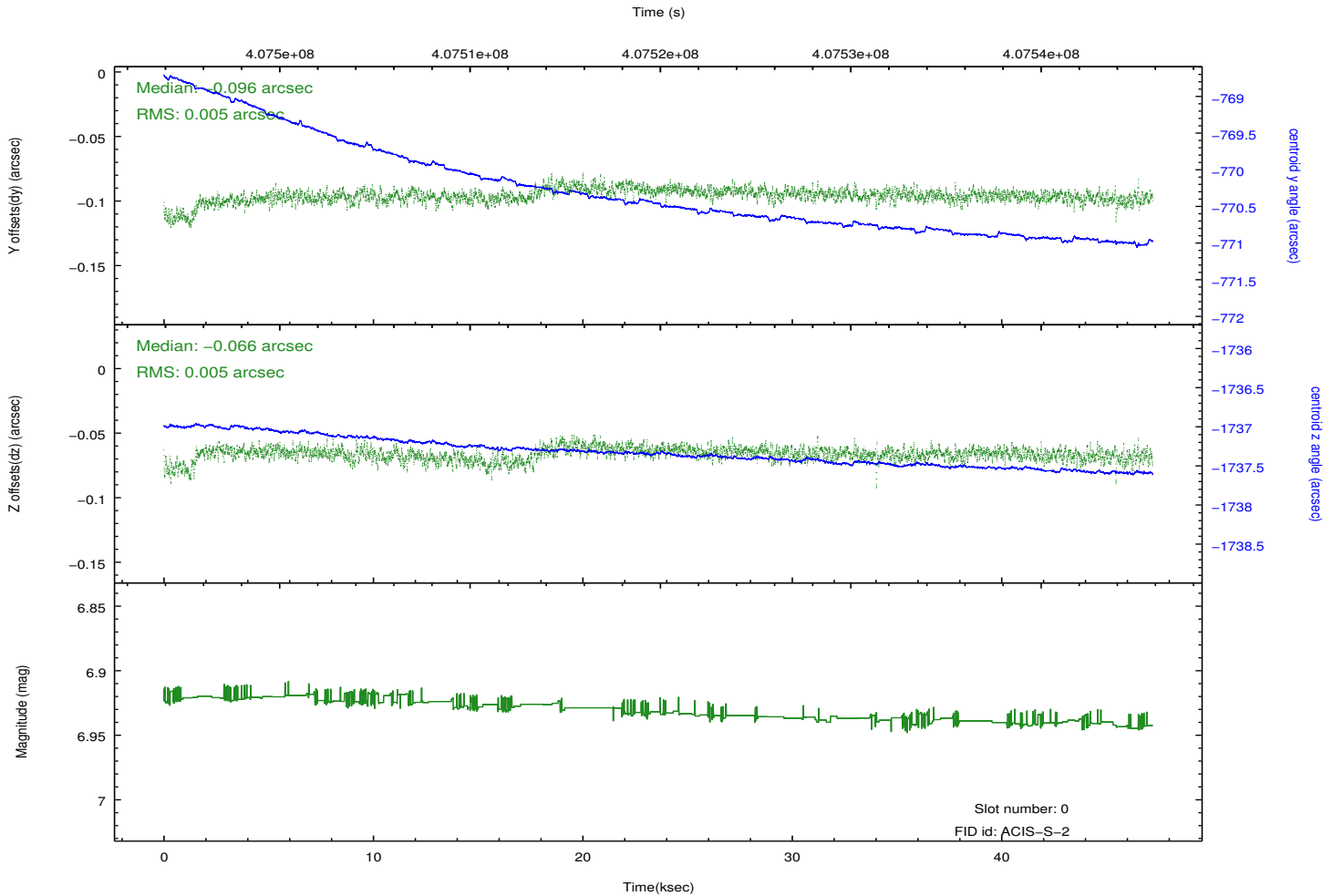
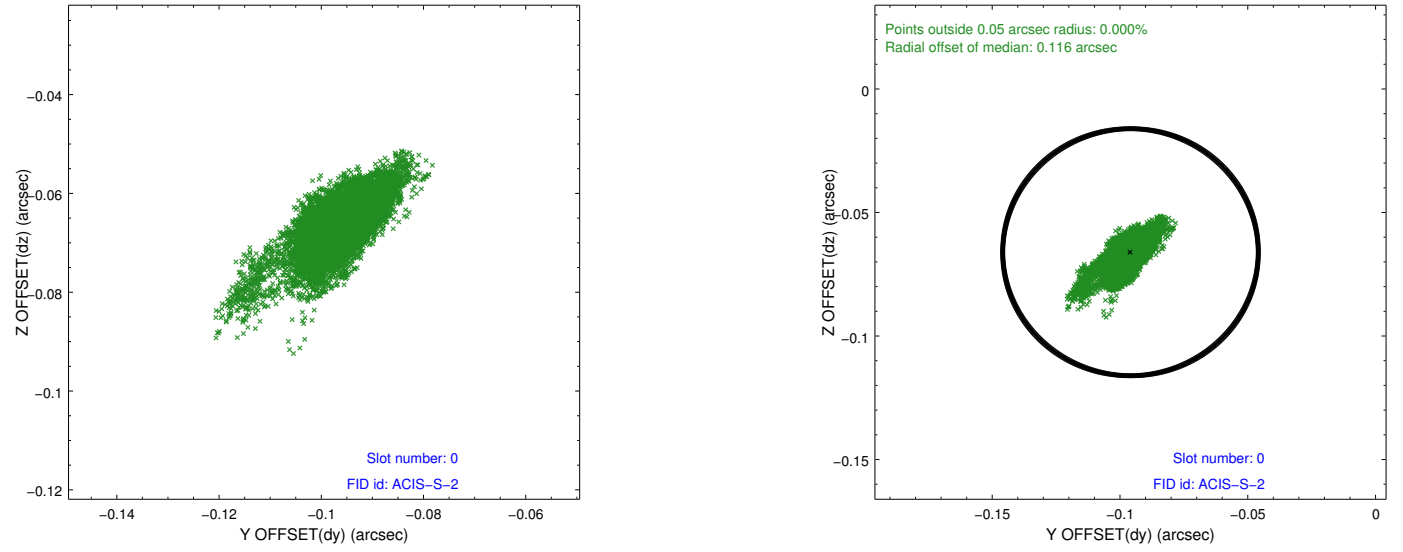


## 2.4.5 Slot 7

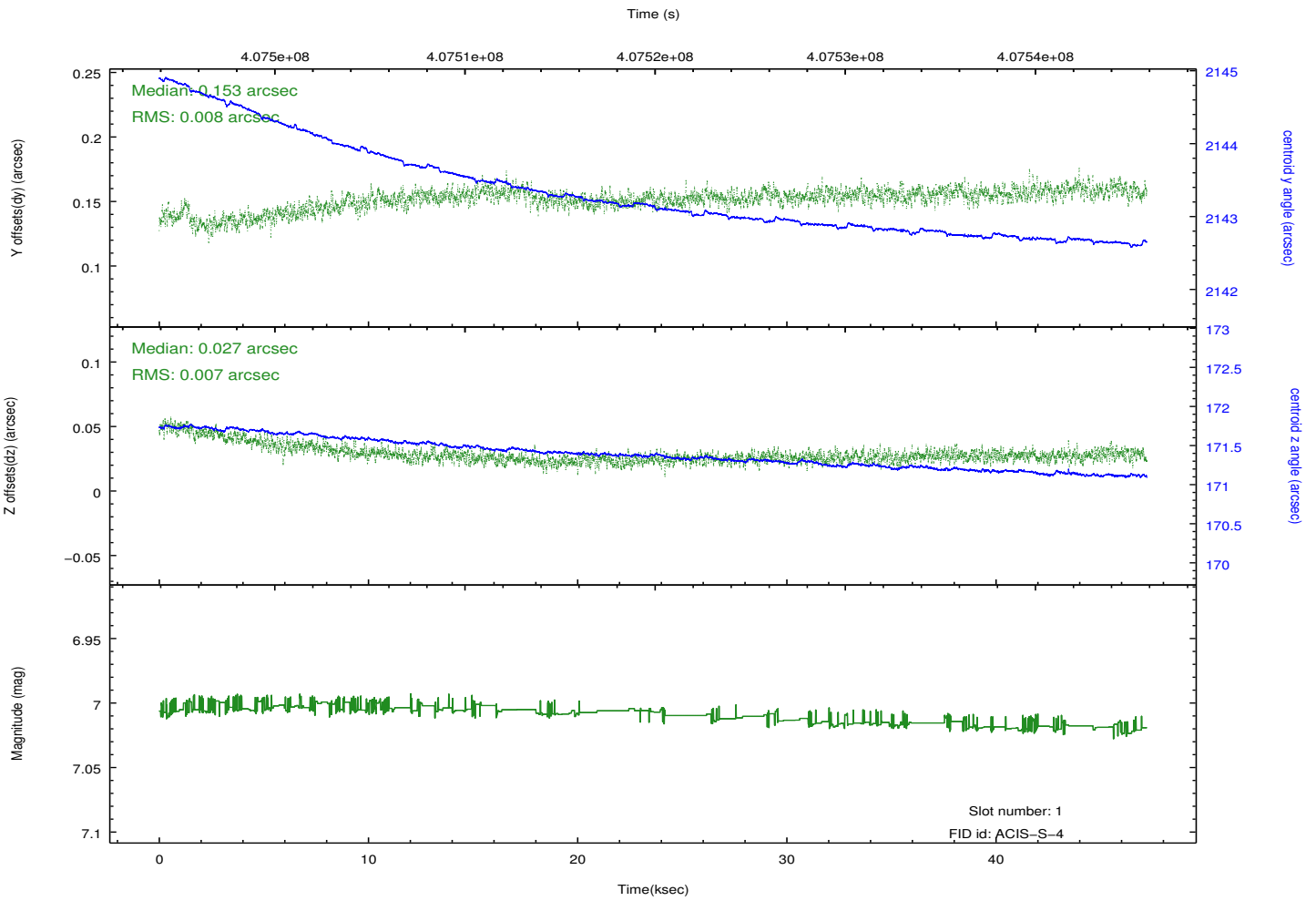
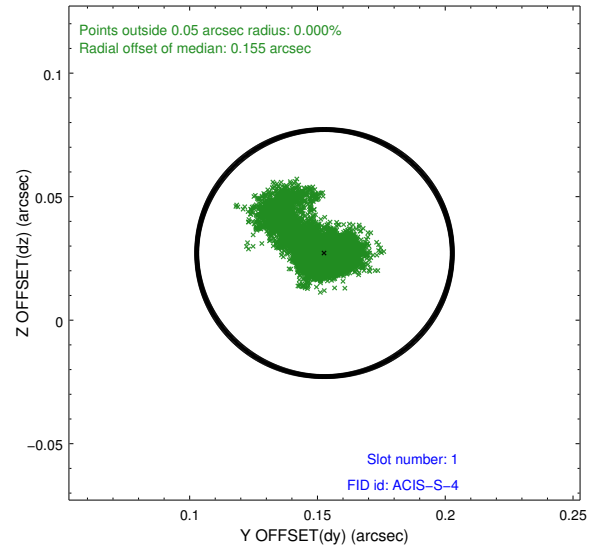
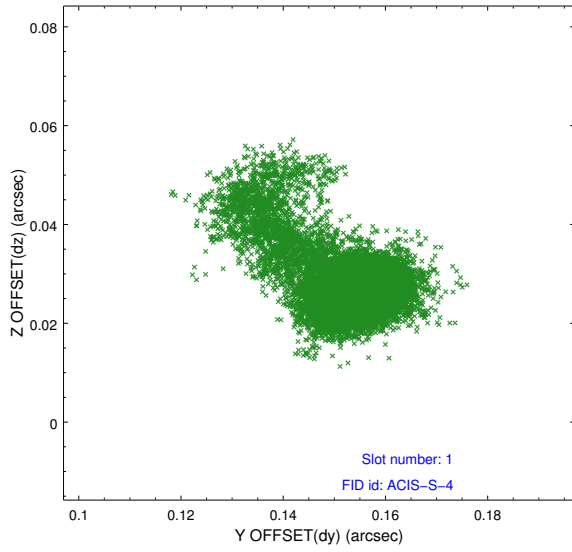


## 2.5 FID Slots

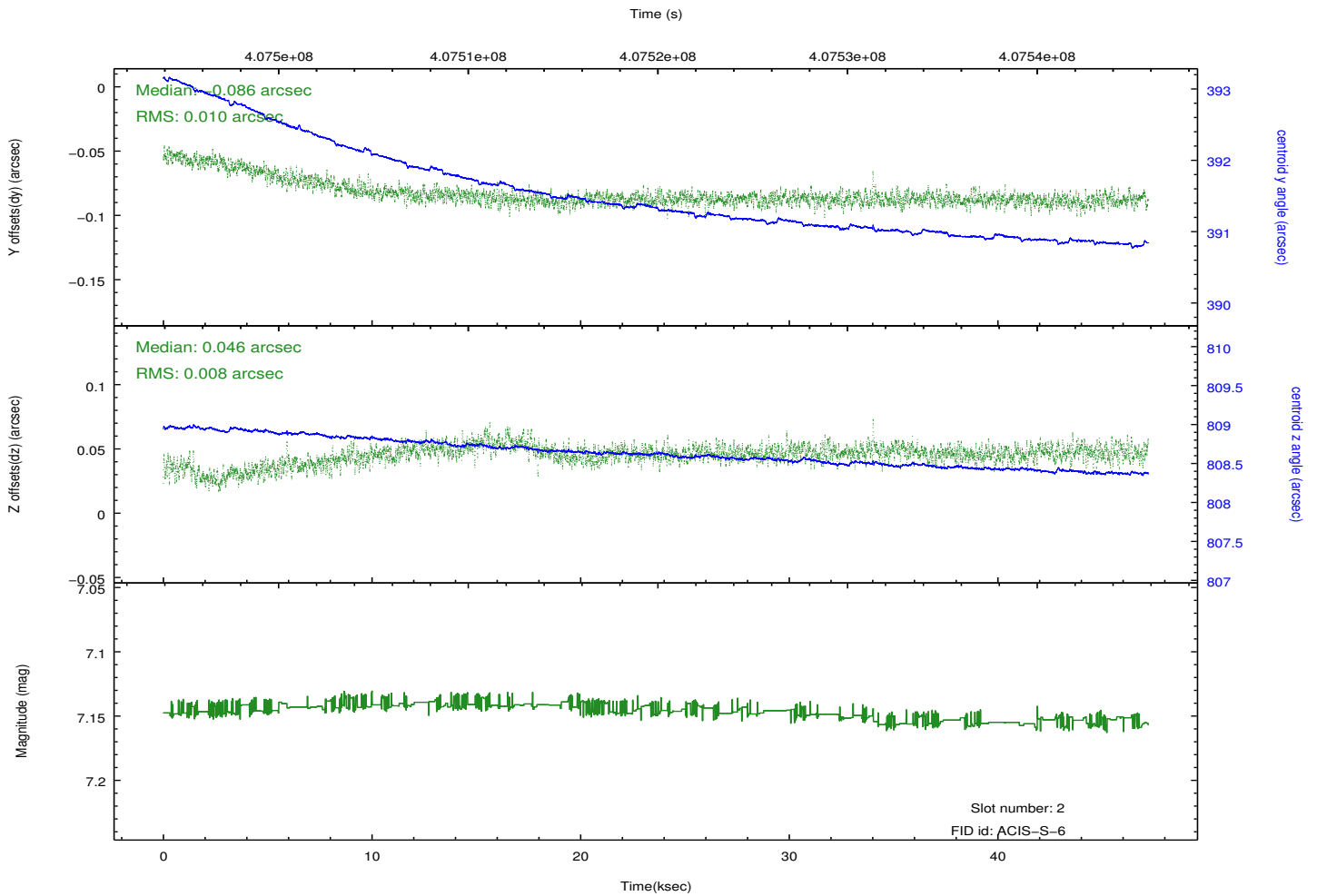
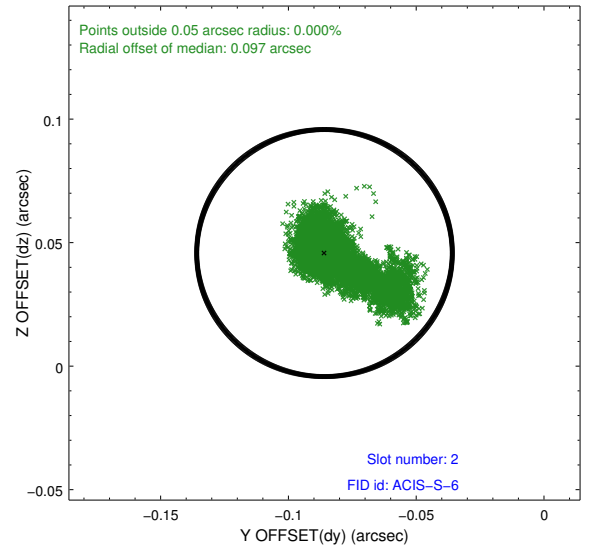
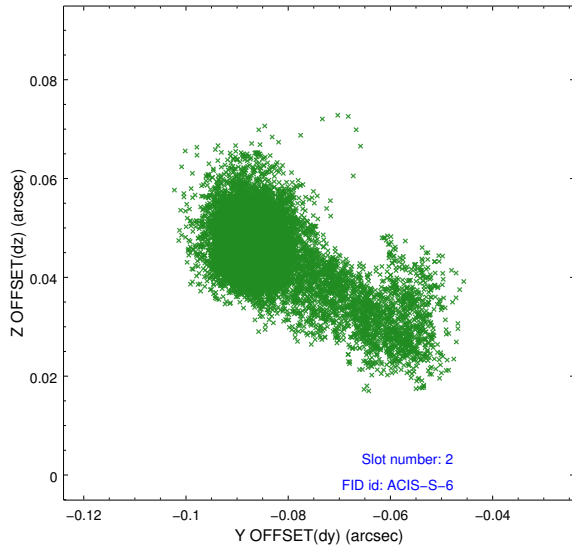
### 2.5.1 Slot 0



## 2.5.2 Slot 1



### 2.5.3 Slot 2



# A Summary

## A.1 Status

V&V Scientist	Jen Lauer
V&V Date (YYYY-MM-DD)	2012.07.17
V&V Edition	1
V&V Disposition and Status	OK
V&V Charge Time	47.091854648948

## A.2 Comments