

V&V Reference Report

L2 ASCDS Version : 8.4.3.1

Observation 12858 - L2 Version 2
Chandra X-Ray Center

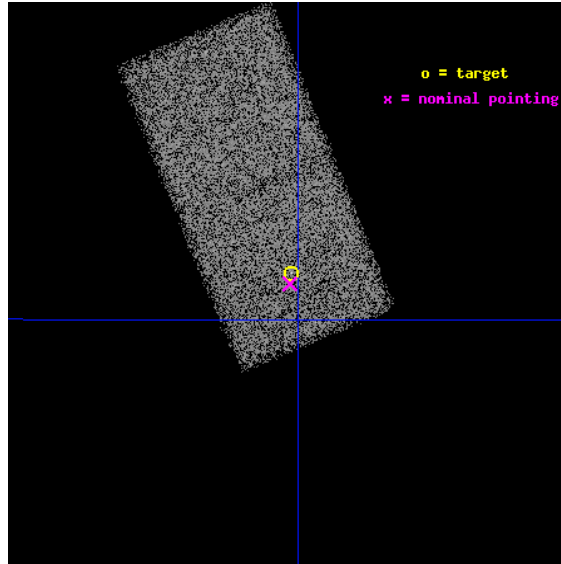
L2 Processing Date : Mar 18 2012

Contents

1	Front	2
2	OBI	3
2.1	OBI	3
2.1.1	Images	3
2.1.2	Bias	3
2.1.3	Parameters	4
2.1.4	Events	4
2.2	Compared Parameters	5
2.3	Aspect	6
2.4	Star Slots	9
2.4.1	Slot 3	9
2.4.2	Slot 4	10
2.4.3	Slot 5	11
2.4.4	Slot 6	12
2.4.5	Slot 7	13
2.5	FID Slots	14
2.5.1	Slot 0	14
2.5.2	Slot 1	15
2.5.3	Slot 2	16
A	Summary	17
A.1	Status	17
A.2	Comments	17

1 Front

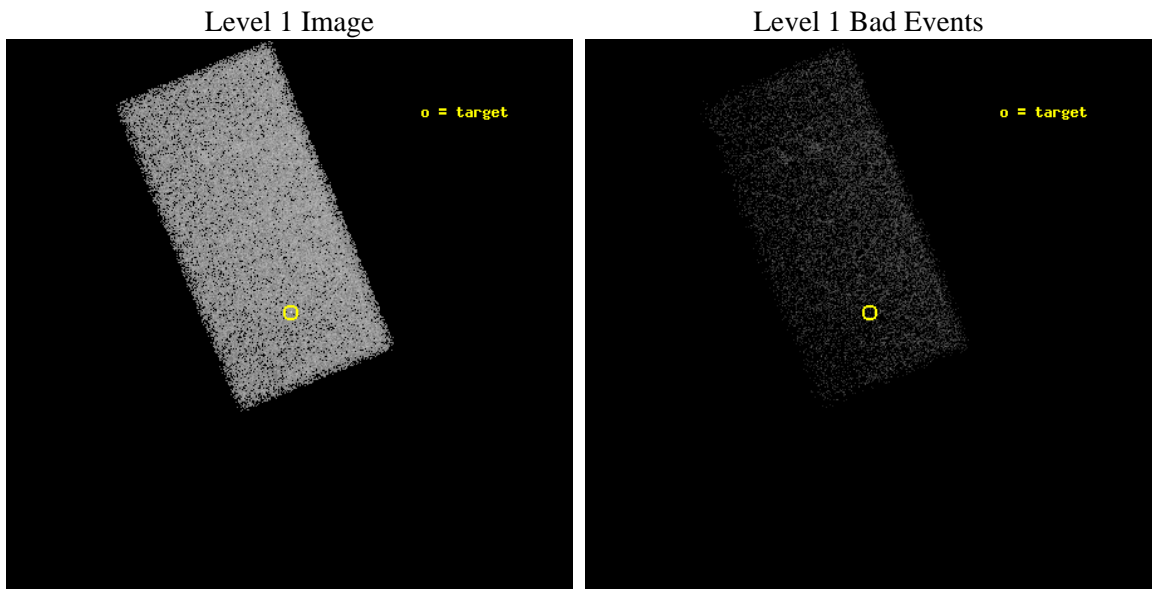
seq_num	702491	Sequence number
obs_id	12858	Observation id
title	Extreme Velocity Quasar Outflows and the Role of X-Ray Shielding	P
observer	Fred Hamann	Principal investigator
object	J132801.25+573113.09	Source name
dtcycle	0	
cycle	P	events from which exps? Prim/Second/Both
ra_targ	202.005	Observer's specified target RA [deg]
dec_targ	57.520306	Observer's specified target Dec [deg]
ra_nom	202.00645897972	Nominal RA [deg]
dec_nom	57.515520900644	Nominal Dec [deg]
roll_nom	247.63186209965	Nominal Roll [deg]
revision	2	Processing version of data
ontime	23018.82711643	Sum of GTIs [s]
livetime	22405.804310495	Livetime [s]
ontime7	23018.82711643	Sum of GTIs [s]
l2events	41114	Number of level 2 events



2 OBI

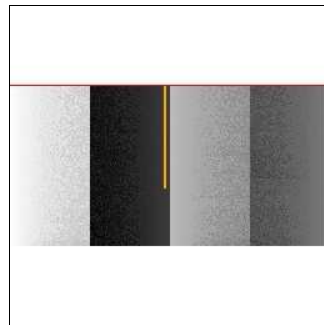
2.1 OBI

2.1.1 Images



2.1.2 Bias

Chip 7



2.1.3 Parameters

obi_num	0	Obi number	sched_exp_time	23000.000000	[s] Scheduled observation exposure time
ascdsver	8.4.3	Processing system revision	ontime	23018.82711643	Sum of GTIs [s]
caldbver	4.4.8	 	ontime7	23018.82711643	Sum of GTIs [s]
date	2012-03-18T18:30:08	Date and time of file creation	l1events	90869	Number of level 1 events
revision	2	Processing version of data			

2.1.4 Events

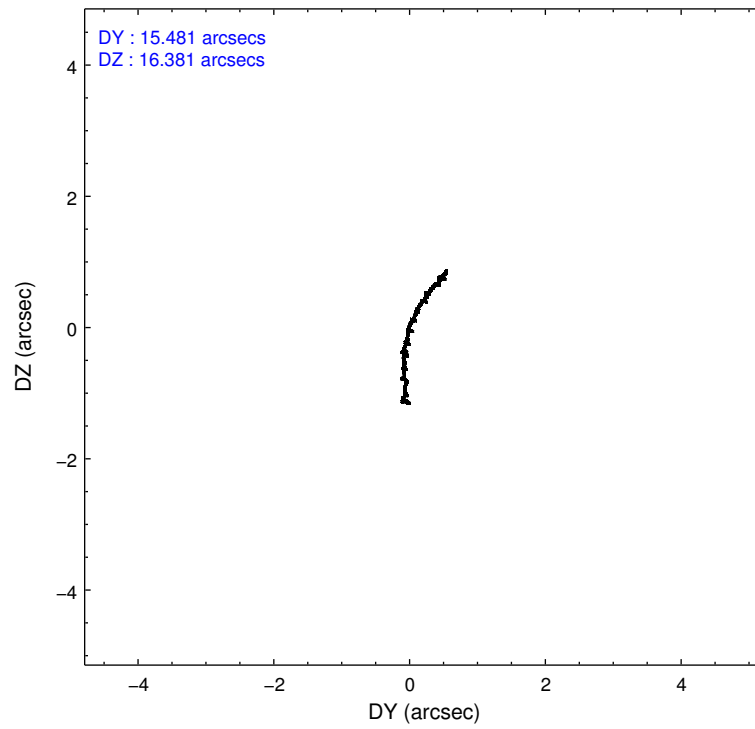
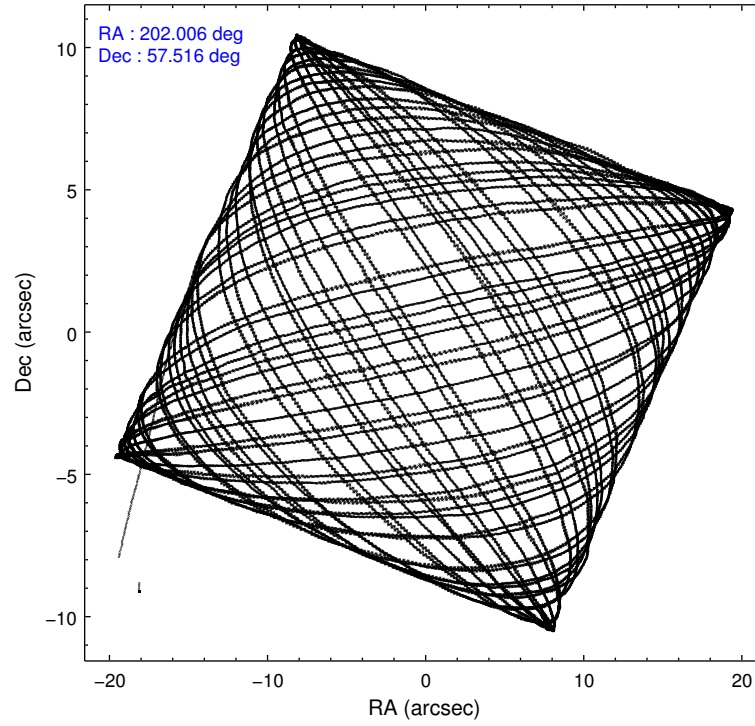
	ccd 7
level 1 events	90869
rejected events	48529
rejected %	53%

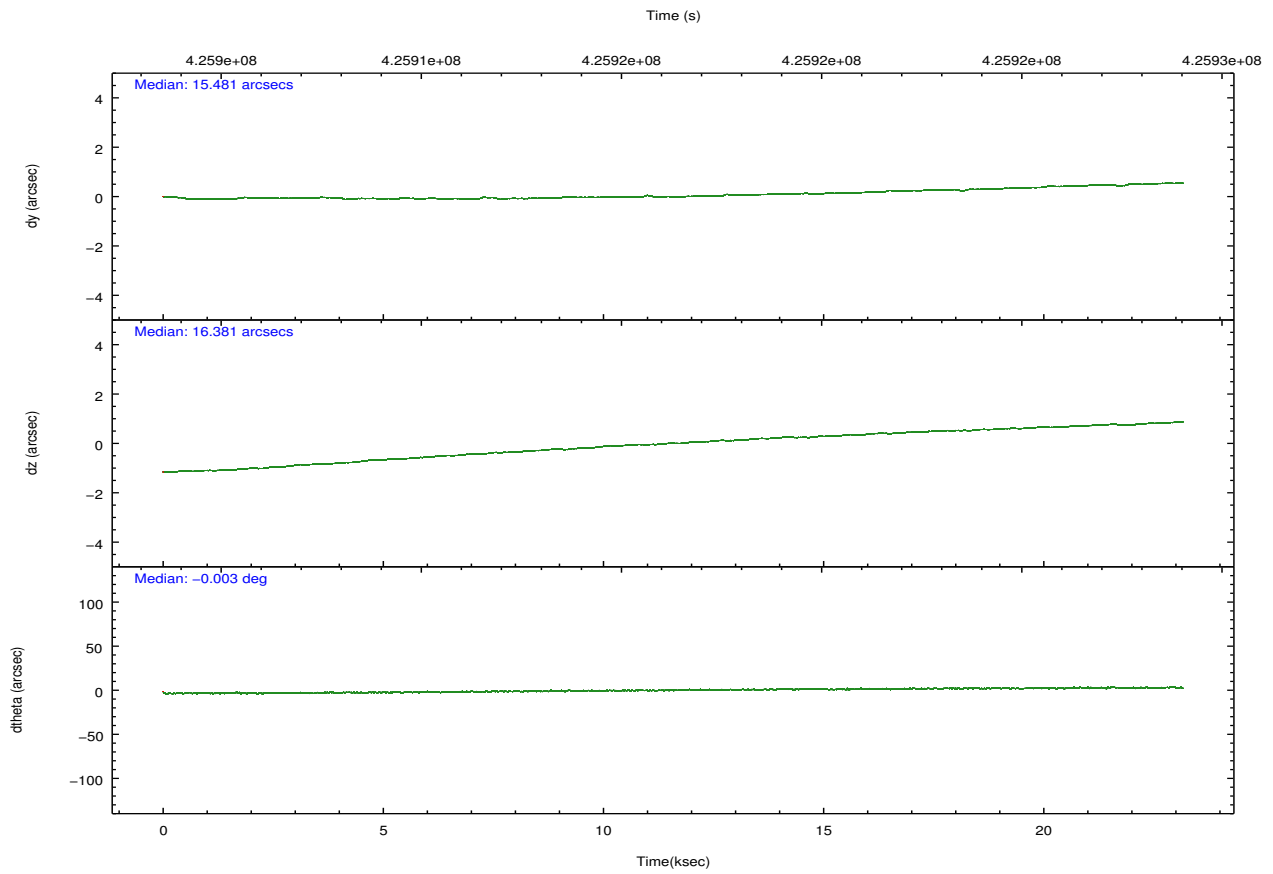
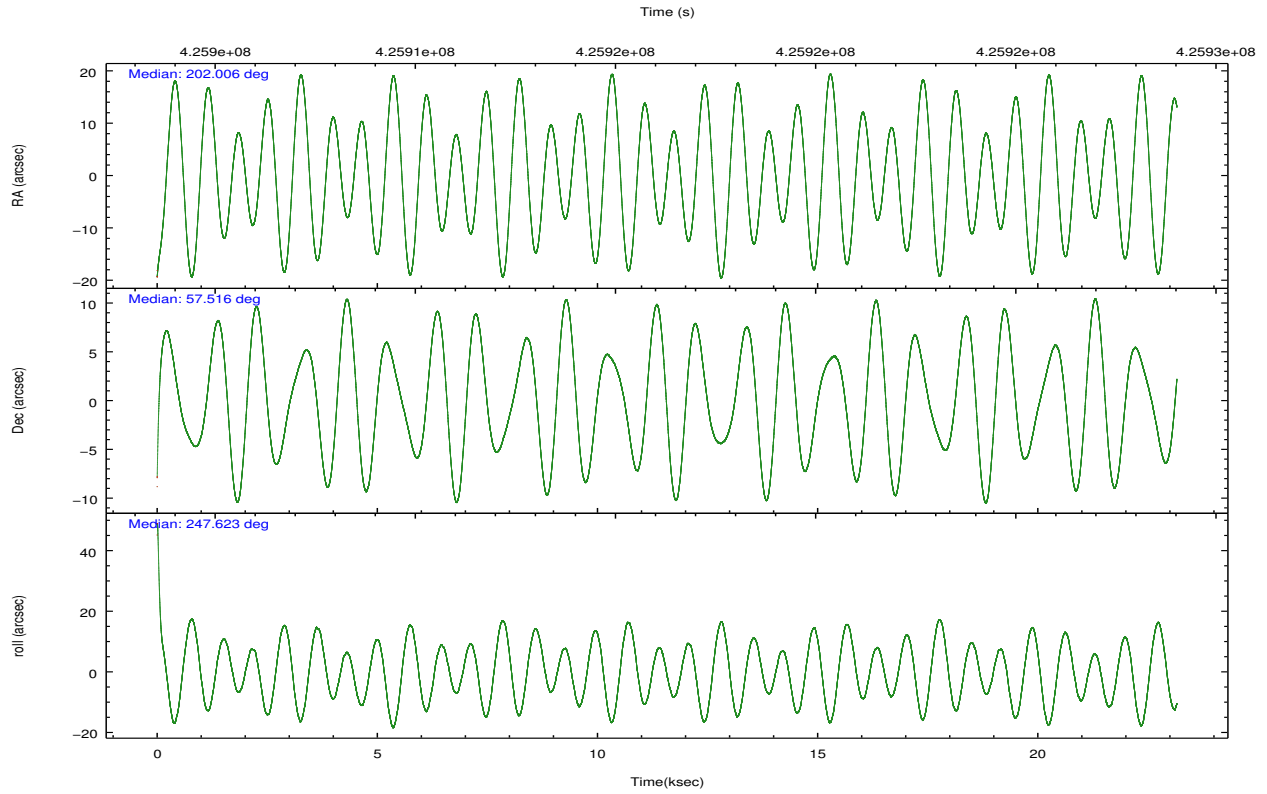
	ccd 7
grade 0 events	4253
	4%
grade 1 events	126
	0%
grade 2 events	8705
	9%
grade 3 events	4229
	4%
grade 4 events	4221
	4%
grade 5 events	9706
	10%
grade 6 events	20940
	23%
grade 7 events	38689
	42%

2.2 Compared Parameters

Parameter	Planned	Actual	Parameter	Planned	Actual
Instrument	ACIS	ACIS	Obspar format version number	7	7
Detector	ACIS-7	ACIS-7	Obspar file type	PREDICTED	ACTUAL
Grating	NONE	NONE	Obspar update status	NONE	UPDATED
Data mode	FAINT	FAINT	Number of optional ACIS chips dropped	0	0
Observation mode	POINTING	POINTING	On-chip summing requested	N	N
[deg] Pointing RA	201.999008	202.0064589797208	Subarray requested	CUSTOM	1/2
[deg] Pointing Dec	57.542562	57.515520900644	Subarray start row	257	257
[deg] Pointing Roll	247.481502	247.6318620996473	Subarray row count	512	512
[mm] SIM focus pos	-0.684267	-0.6828225247311905	Alternating exposures requested	N	N
[mm] SIM defocus	0	0.001444936568705701	[s] Primary exposure time	0.000000	1.5
[mm] SIM translation stage pos	-190.132523	-190.1400660498719			
[mm] SIM translation stage offset	0	0.00754346686406393			
[s] Observation start time (MET)	425904863.184000	425903769.16046			
Observation start date	2011-07-01T10:53:17	2011-07-01T10:36:09			
[s] Observation end time (MET)	425927863.184000	425929019.01177			
Observation end date	2011-07-01T17:16:37	2011-07-01T17:36:59			
Read mode	TIMED	TIMED			

2.3 Aspect



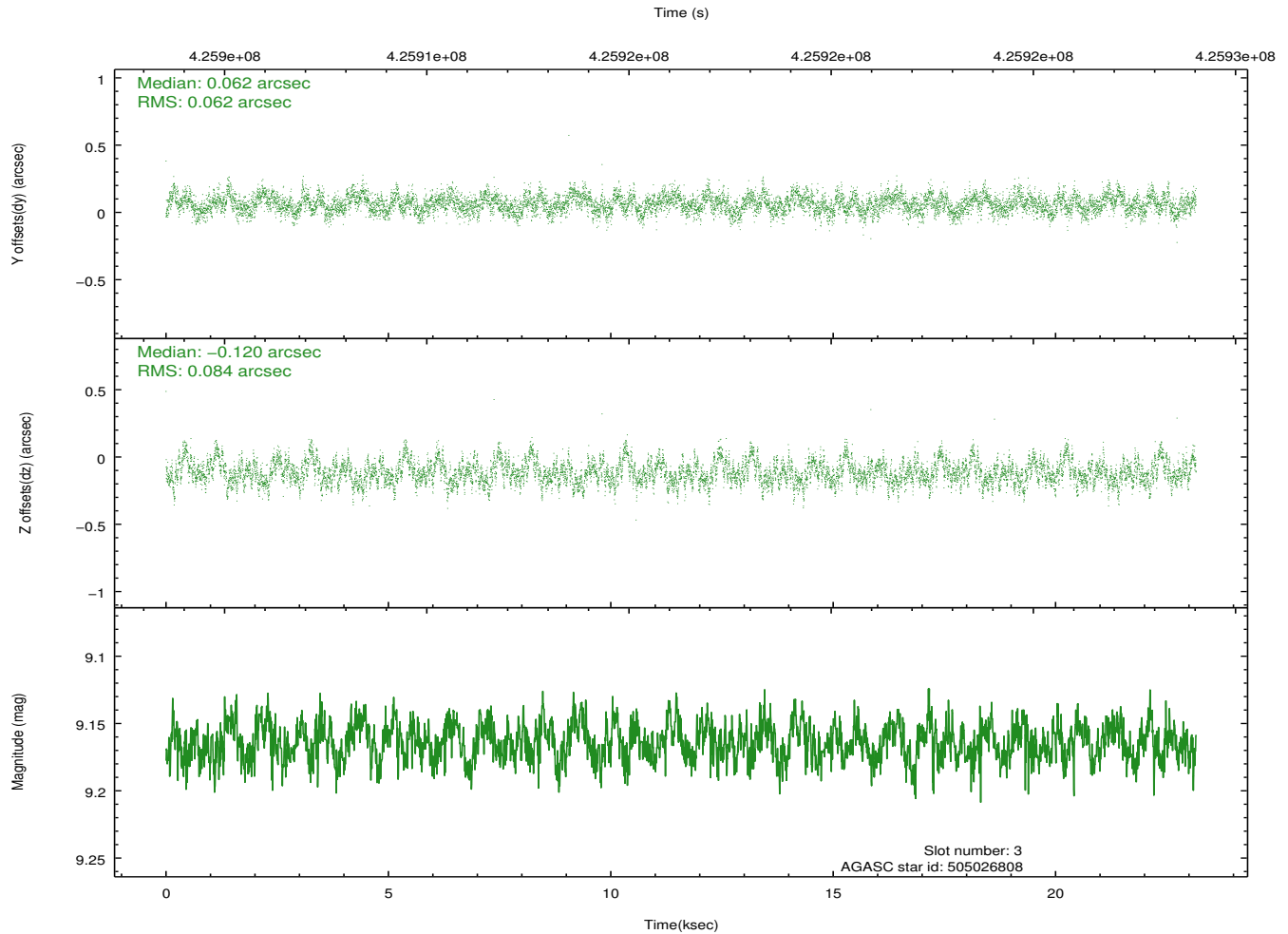
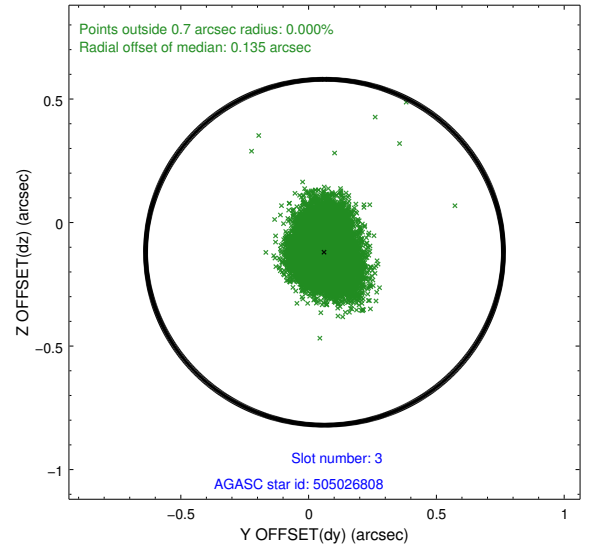
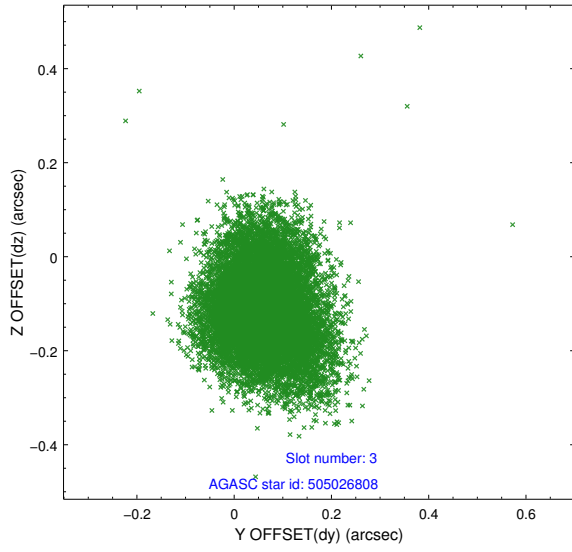


Slot Statistics

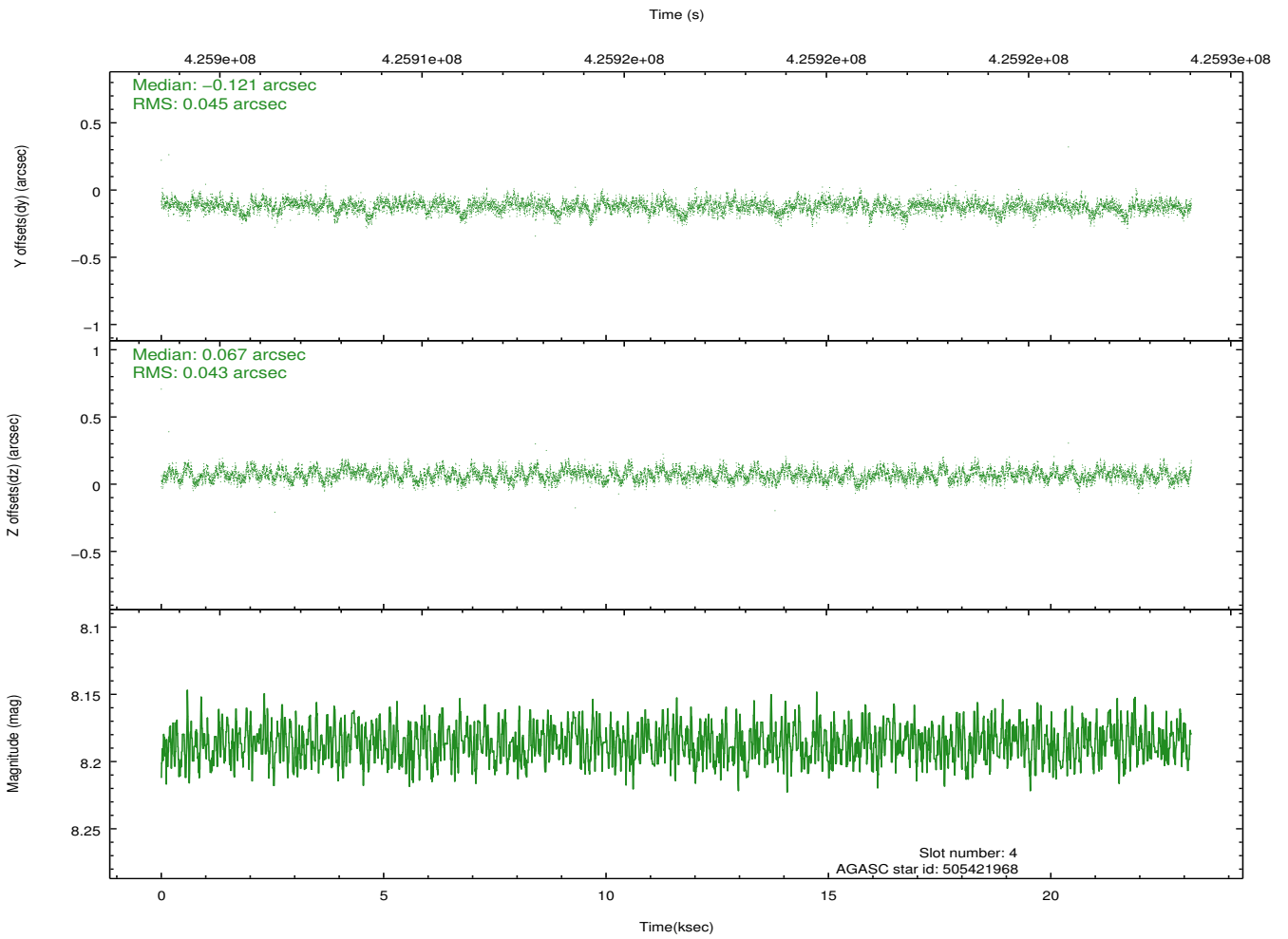
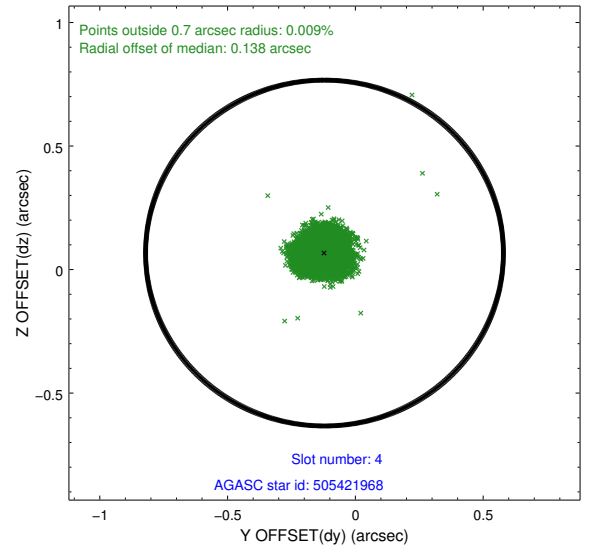
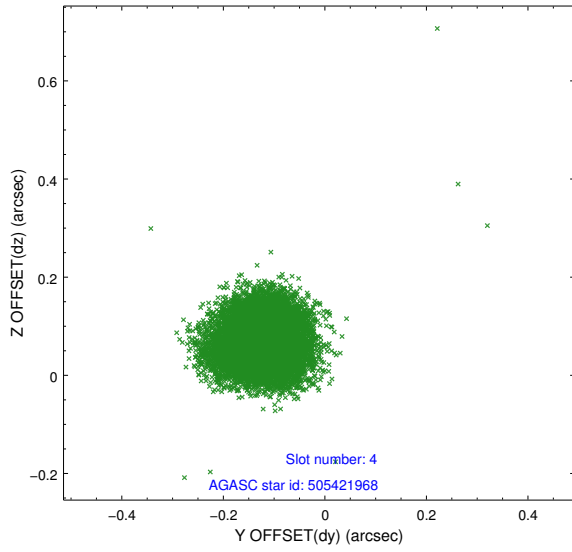
slot	status	id	mag	n_pts	med_dy	med_dz	dr1	dr2	ra	dec	mean_y	mean_z
0	FID	ACIS-S-2	6.93	5649	-0.086	-0.009	0.016	0.024	0.000000	0.000000	-768.66	-1737.73
1	FID	ACIS-S-4	7.01	5649	0.164	0.044	0.014	0.022	0.000000	0.000000	2144.81	170.63
2	FID	ACIS-S-5	7.03	5648	-0.110	-0.027	0.014	0.022	0.000000	0.000000	-1821.33	164.43
3	GUIDE	505026808	9.16	11288	0.062	-0.120	0.111	0.182	201.997962	57.180932	1203.58	496.33
4	GUIDE	505421968	8.19	11296	-0.121	0.067	0.066	0.105	202.022601	58.209270	-2233.87	-877.81
5	GUIDE	505422344	8.61	11292	-0.015	-0.037	0.078	0.125	202.767077	57.846963	-1583.57	936.77
6	GUIDE	505028200	9.05	11291	0.142	-0.019	0.094	0.149	201.178629	57.334344	1294.40	-1188.40
7	GUIDE	505027416	7.30	11297	-0.064	0.097	0.060	0.095	201.439710	56.970493	2319.68	-228.41

2.4 Star Slots

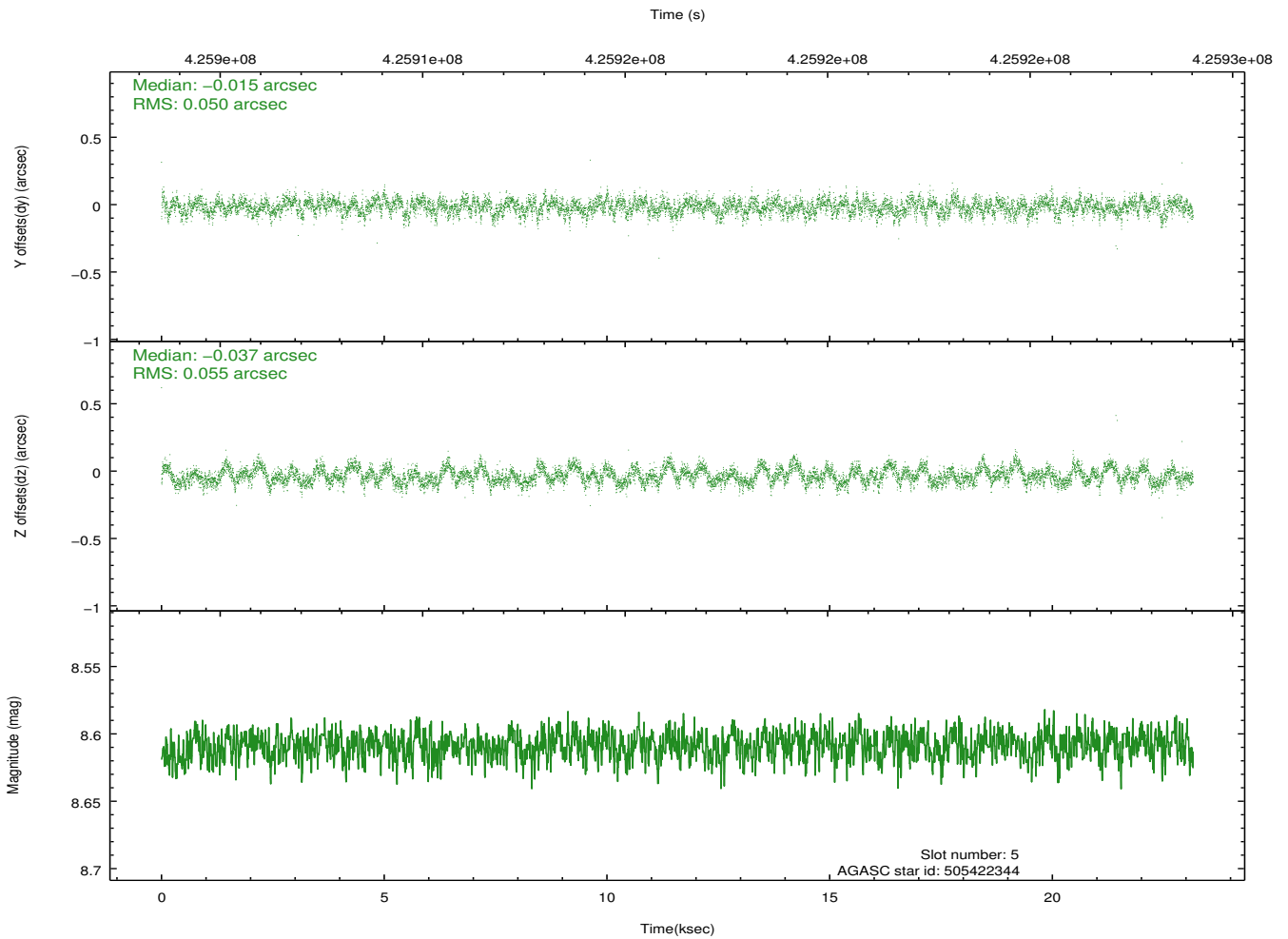
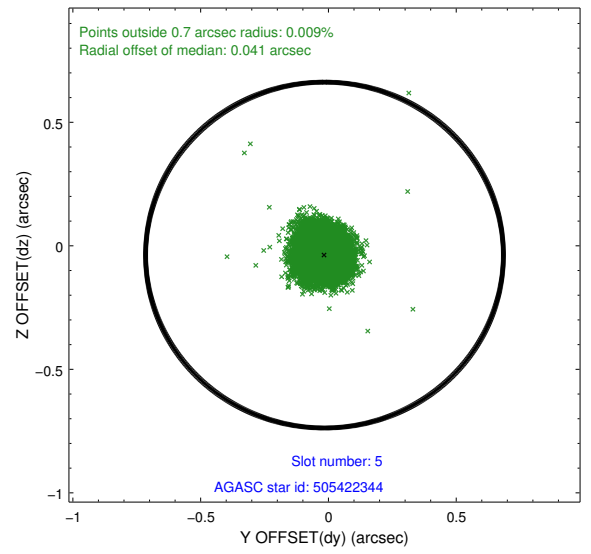
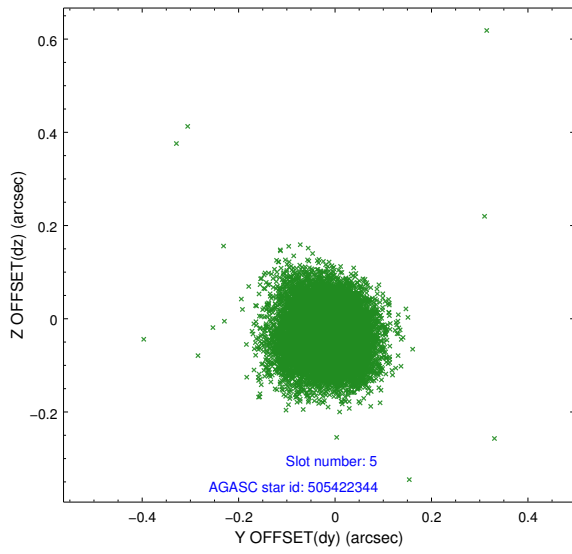
2.4.1 Slot 3



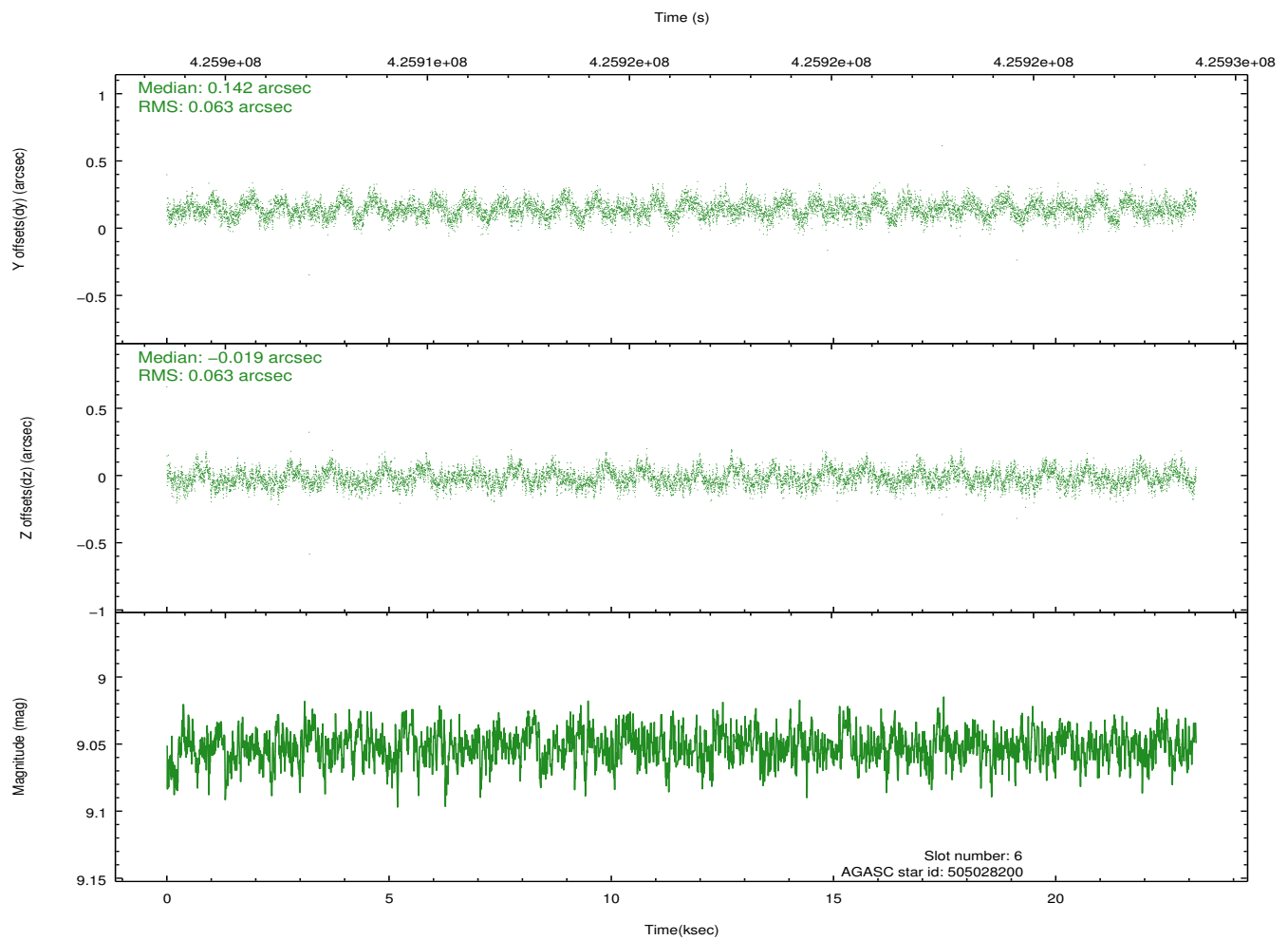
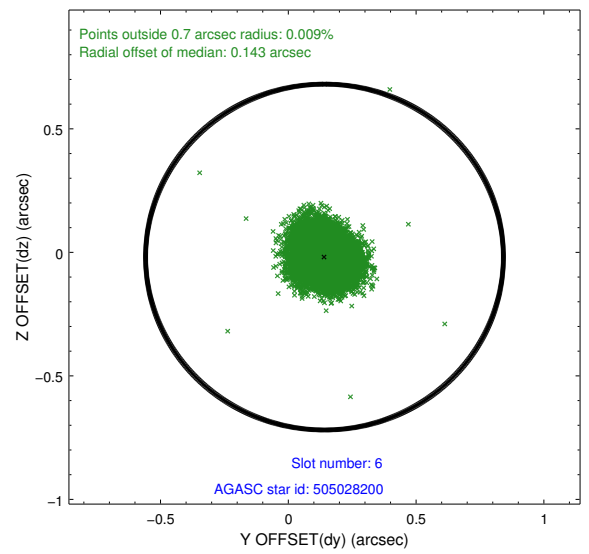
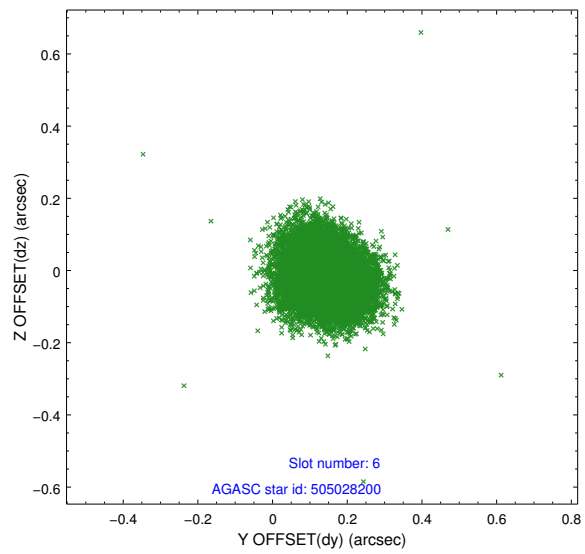
2.4.2 Slot 4



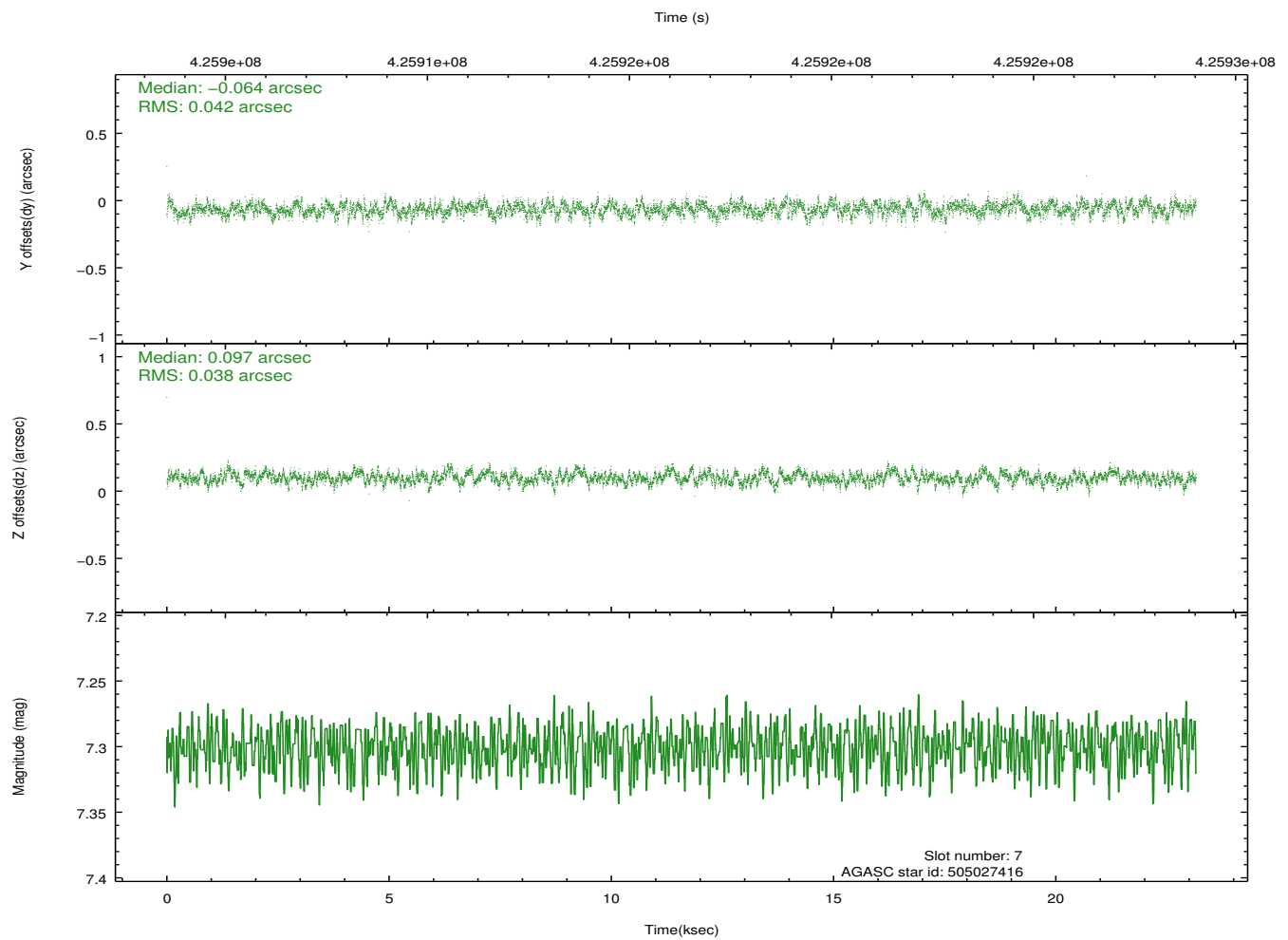
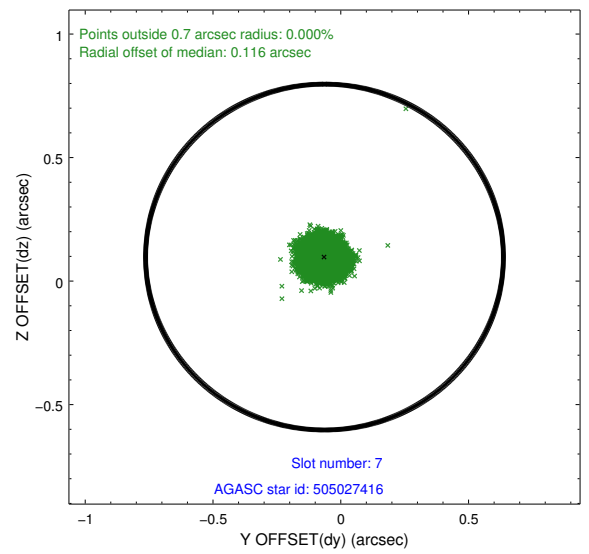
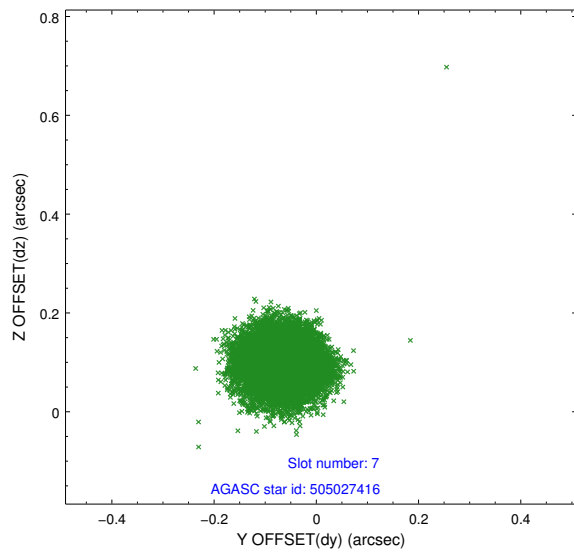
2.4.3 Slot 5



2.4.4 Slot 6

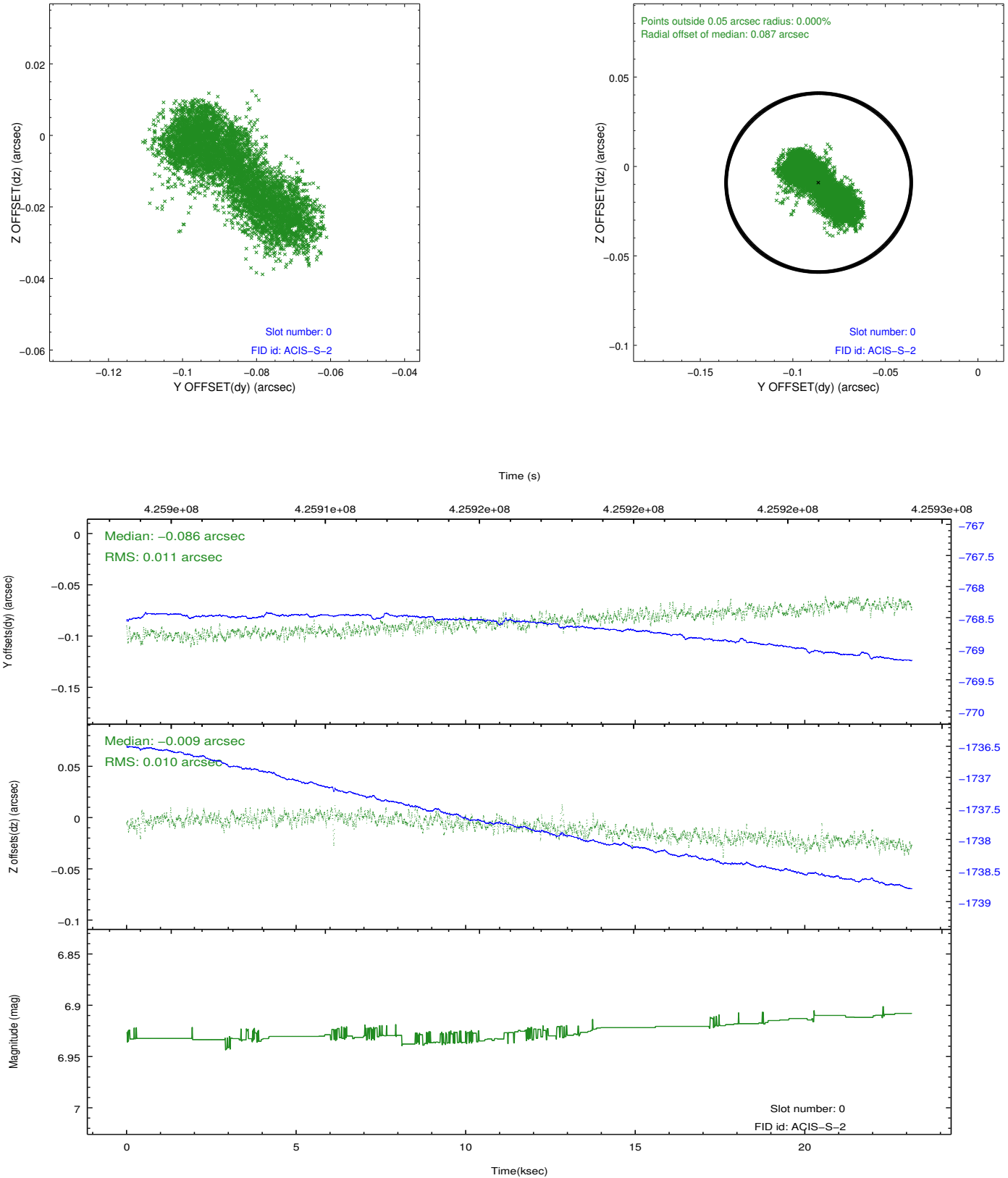


2.4.5 Slot 7

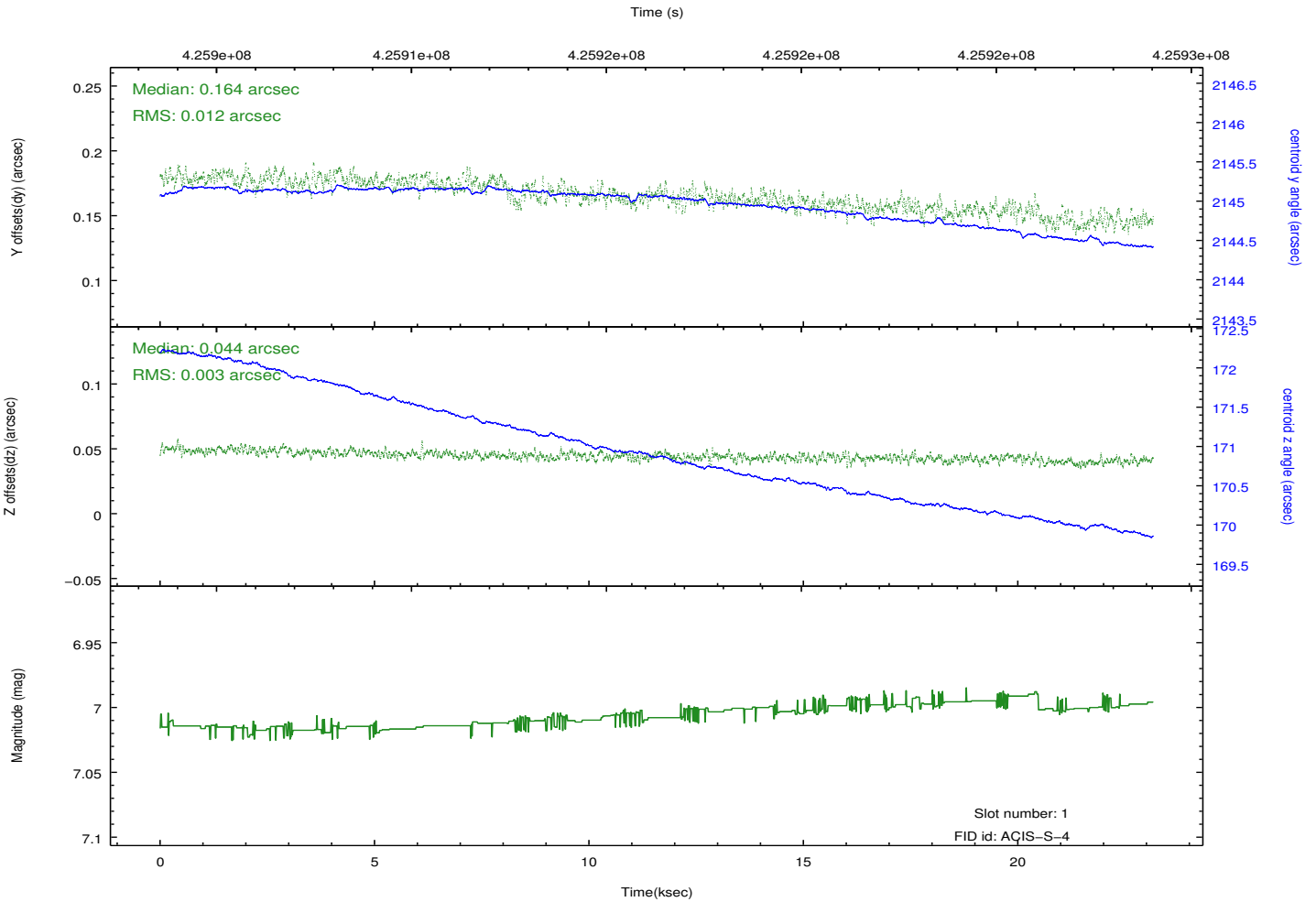
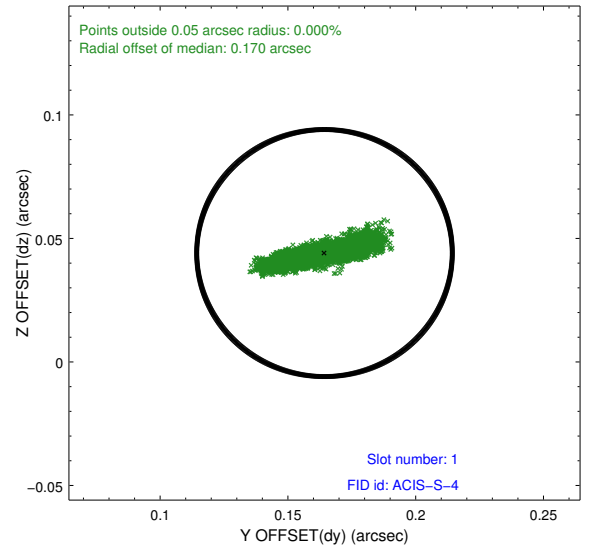
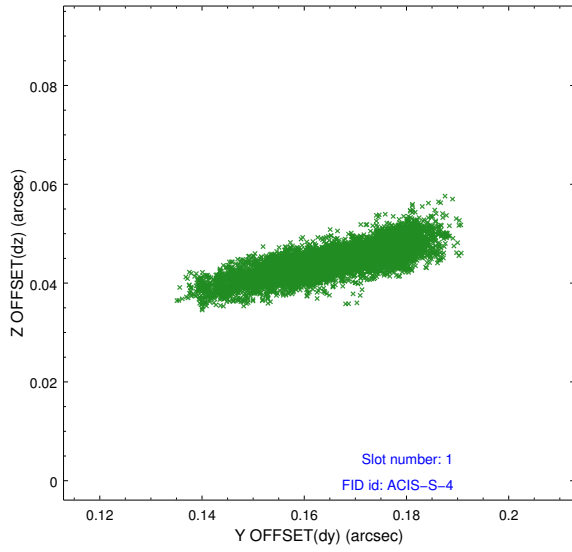


2.5 FID Slots

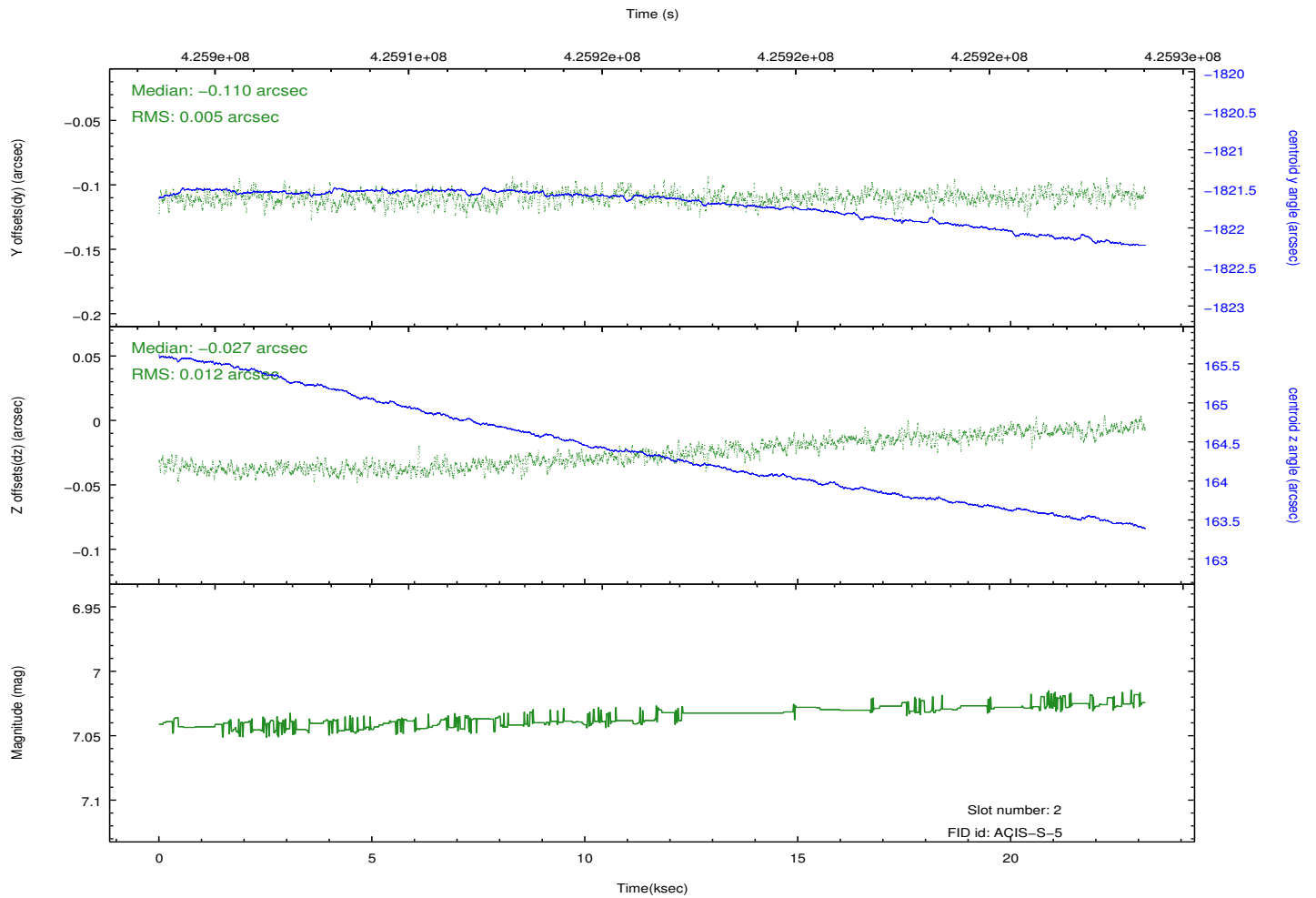
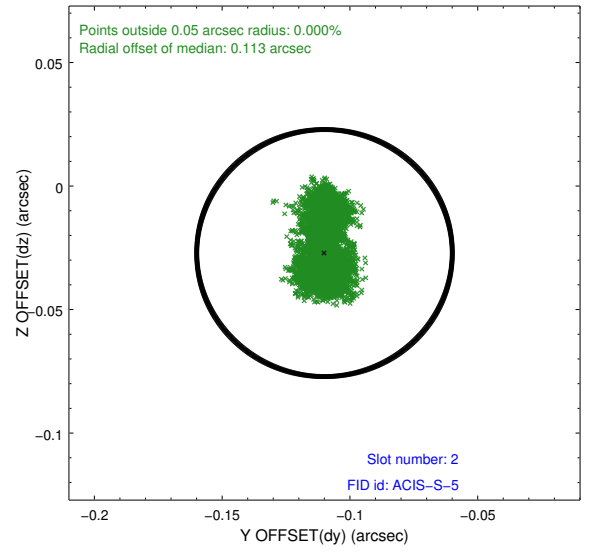
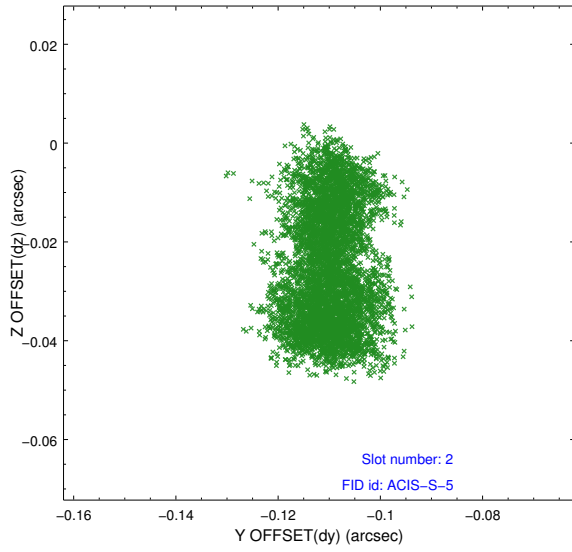
2.5.1 Slot 0



2.5.2 Slot 1



2.5.3 Slot 2



A Summary

A.1 Status

V&V Scientist	Jen Lauer
V&V Date (YYYY-MM-DD)	2012.03.20
V&V Edition	1
V&V Disposition and Status	OK
V&V Charge Time	23.018827110112

A.2 Comments