

V&V Reference Report

L2 ASCDS Version : 8.4.5

Observation 12988 - L2 Version 2
Chandra X-Ray Center

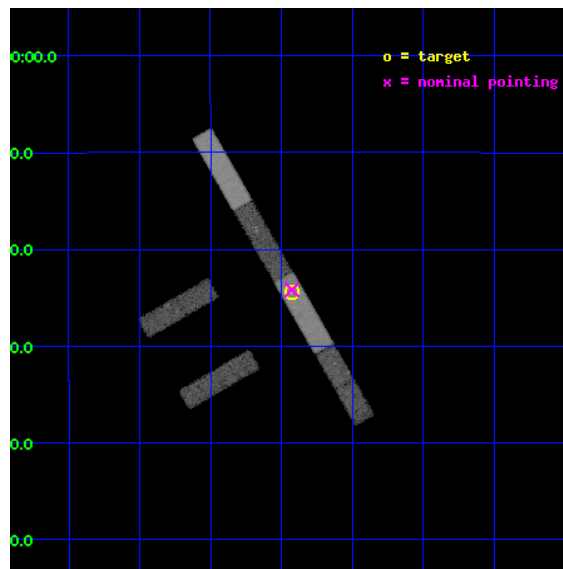
L2 Processing Date : Jul 4 2012

Contents

1	Front	2
2	OBI	3
2.1	OBI	3
2.1.1	Images	3
2.1.2	Bias	3
2.1.3	Parameters	4
2.1.4	Events	4
2.2	Compared Parameters	5
2.3	Aspect	6
2.4	Star Slots	9
2.4.1	Slot 3	9
2.4.2	Slot 4	10
2.4.3	Slot 5	11
2.4.4	Slot 6	12
2.4.5	Slot 7	13
2.5	FID Slots	14
2.5.1	Slot 0	14
2.5.2	Slot 1	15
2.5.3	Slot 2	16
A	Summary	17
A.1	Status	17
A.2	Comments	17

1 Front

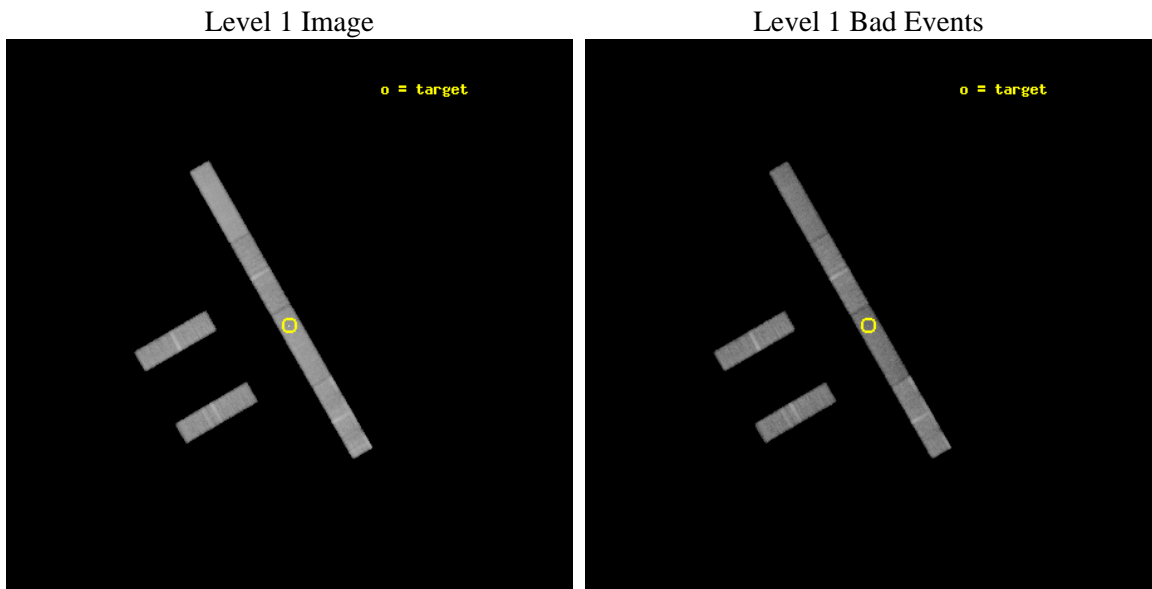
seq_num	600956	Sequence number
obs_id	12988	Observation id
title	The most luminous ULXs	Proposal title
observer	Mr Andrew Sutton	Principal investigator
object	NGC 1042 ULX1	Source name
dtcycle	0	
cycle	P	events from which exps? Prim/Second/Both
ra_targ	40.106667	Observer's specified target RA [deg]
dec_targ	-8.407889	Observer's specified target Dec [deg]
ra_nom	40.106514546328	Nominal RA [deg]
dec_nom	-8.4030522582855	Nominal Dec [deg]
roll_nom	59.99364676809	Nominal Roll [deg]
revision	2	Processing version of data
ontime	30096.860087097	Sum of GTIs [s]
livetime	29014.360667291	Livetime [s]
ontime2	30096.9011271	Sum of GTIs [s]
ontime3	30096.736967087	Sum of GTIs [s]
ontime5	30096.819047093	Sum of GTIs [s]
ontime6	30094.495927095	Sum of GTIs [s]
ontime7	30096.860087097	Sum of GTIs [s]
ontime8	30096.695927083	Sum of GTIs [s]
l2events	103664	Number of level 2 events



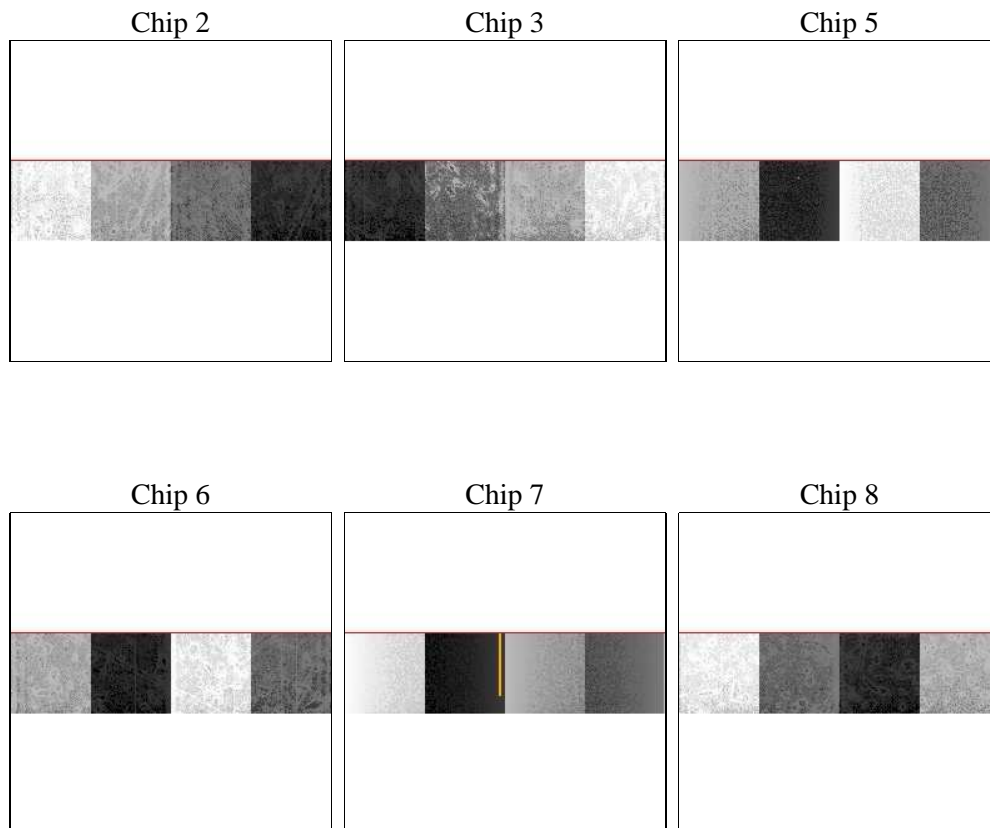
2 OBI

2.1 OBI

2.1.1 Images



2.1.2 Bias



2.1.3 Parameters

obi_num	0	Obi number	sched_exp_time	30000.000000	[s] Scheduled observation exposure time
ascdsver	8.4.5	Processing system revision	ontime	30096.860087097	Sum of GTIs [s]
caldbver	4.5.0	 	ontime2	30096.9011271	Sum of GTIs [s]
date	2012-07-04T16:43:02	Date and time of file creation	ontime3	30096.736967087	Sum of GTIs [s]
revision	2	Processing version of data	ontime5	30096.819047093	Sum of GTIs [s]
			ontime6	30094.495927095	Sum of GTIs [s]
			ontime7	30096.860087097	Sum of GTIs [s]
			ontime8	30096.695927083	Sum of GTIs [s]
			l1events	453452	Number of level 1 events

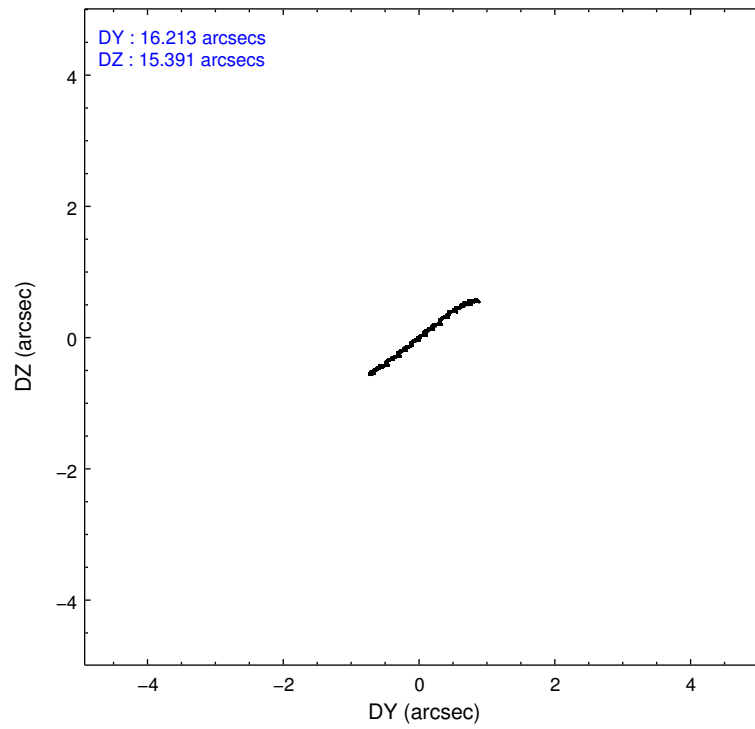
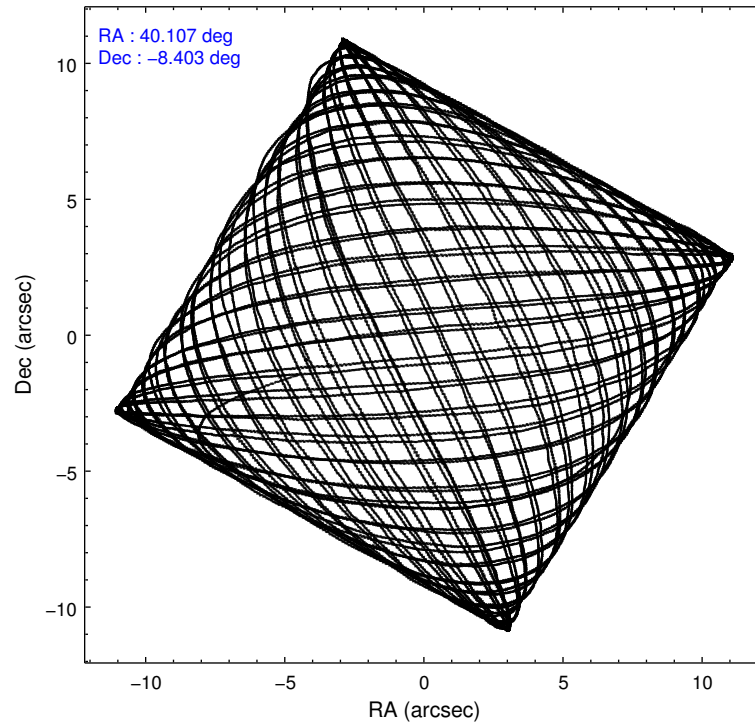
2.1.4 Events

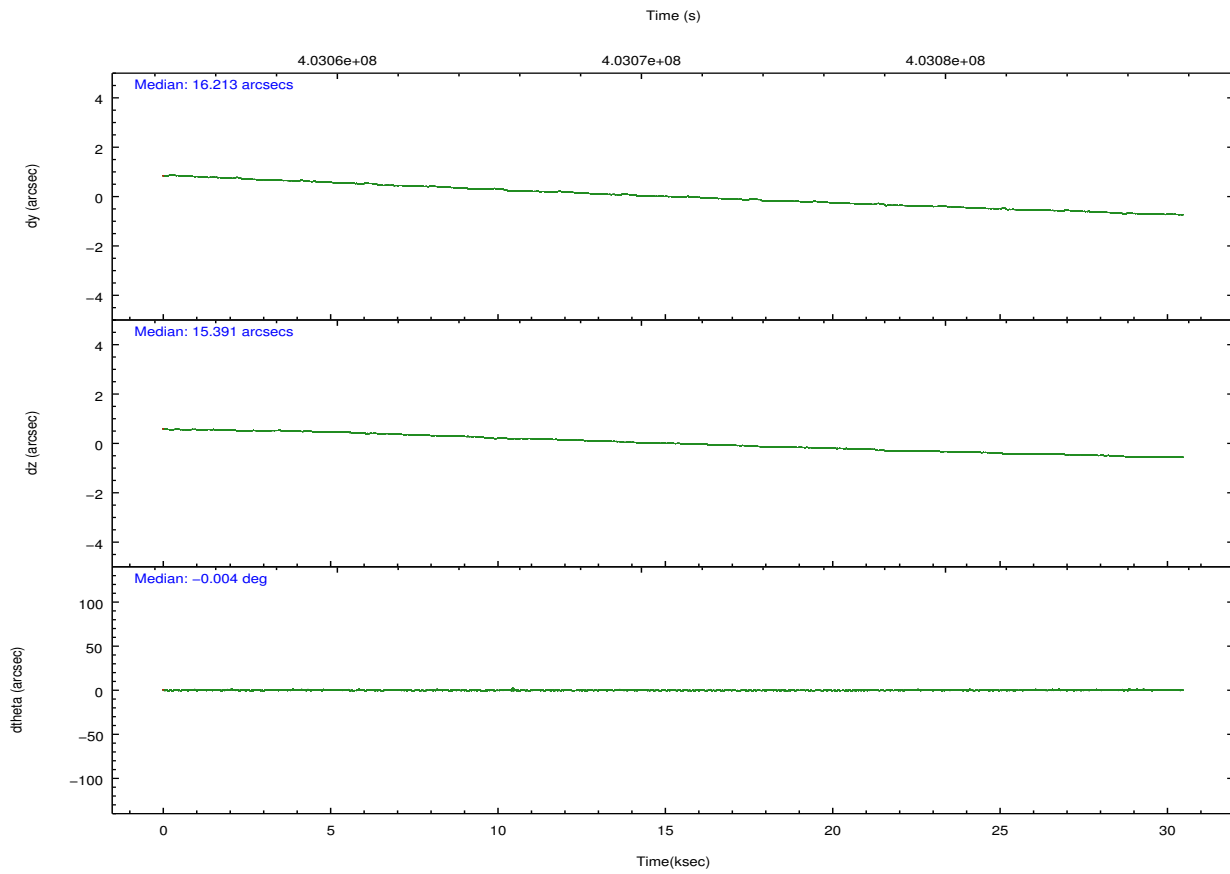
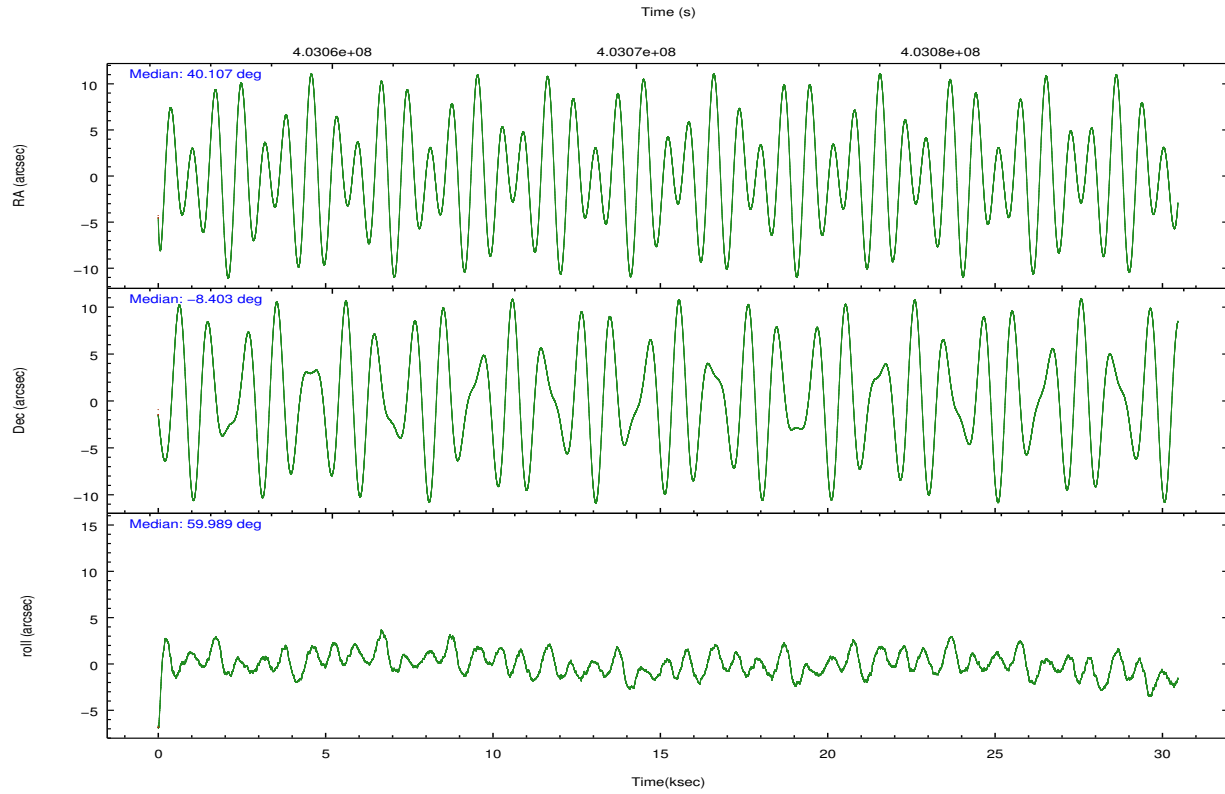
	ccd 2	ccd 3	ccd 5	ccd 6	ccd 7	ccd 8		ccd 2	ccd 3	ccd 5	ccd 6	ccd 7	ccd 8
level 1 events	69278	63629	88200	66572	77366	88407	grade 0 events	2329	2171	3350	2434	4246	5486
rejected events	61878	56949	44927	58954	39459	67433		3%	3%	3%	3%	5%	6%
rejected %	89%	89%	50%	88%	51%	76%	grade 1 events	26	35	202	26	126	45
								0%	0%	0%	0%	0%	0%
							grade 2 events	1631	1327	12842	1479	8096	4742
								2%	2%	14%	2%	10%	5%
							grade 3 events	1030	980	2502	1092	4181	2430
								1%	1%	2%	1%	5%	2%
							grade 4 events	1055	988	2424	1104	3917	2230
								1%	1%	2%	1%	5%	2%
							grade 5 events	2495	2491	7908	2633	7657	3677
								3%	3%	8%	3%	9%	4%
							grade 6 events	1355	1215	22158	1509	17467	6087
								1%	1%	25%	2%	22%	6%
							grade 7 events	59357	54422	36814	56295	31676	63710
								85%	85%	41%	84%	40%	72%

2.2 Compared Parameters

Parameter	Planned	Actual	Parameter	Planned	Actual
Instrument	ACIS	ACIS	Obspar format version number	7	7
Detector	ACIS-235678	ACIS-235678	Obspar file type	PREDICTED	ACTUAL
Grating	NONE	NONE	Obspar update status	NONE	UPDATED
Data mode	FAINT	FAINT	CCD I0 on	N	N
Observation mode	POINTING	POINTING	CCD I1 on	N	N
[deg] Pointing RA	40.106898	40.10651454632799	CCD I2 on	O3	Y
[deg] Pointing Dec	-8.430376	-8.40305225828547	CCD I3 on	O2	Y
[deg] Pointing Roll	59.837075	59.99364676808997	CCD S0 on	N	N
[mm] SIM focus pos	-0.684267	-0.6828225247311905	CCD S1 on	O4	Y
[mm] SIM defocus	0	0.001444936568705701	CCD S2 on	Y	Y
[mm] SIM translation stage pos	-190.132523	-190.1400660498719	CCD S3 on	Y	Y
[mm] SIM translation stage offset	0	0.00754346686406393	CCD S4 on	O1	Y
[s] Observation start time (MET)	403056271.184000	403055204.95303	CCD S5 on	N	N
Observation start date	2010-10-10T00:03:25	2010-10-09T23:46:44	Number of optional ACIS chips dropped	0	0
[s] Observation end time (MET)	403086271.184000	403087601.61719	On-chip summing requested	N	N
Observation end date	2010-10-10T08:23:25	2010-10-10T08:46:41	Subarray requested	CUSTOM	1/4
Read mode	TIMED	TIMED	Subarray start row	385	385
			Subarray row count	256	256
			Alternating exposures requested	N	N
			[s] Primary exposure time	0.000000	1.1

2.3 Aspect



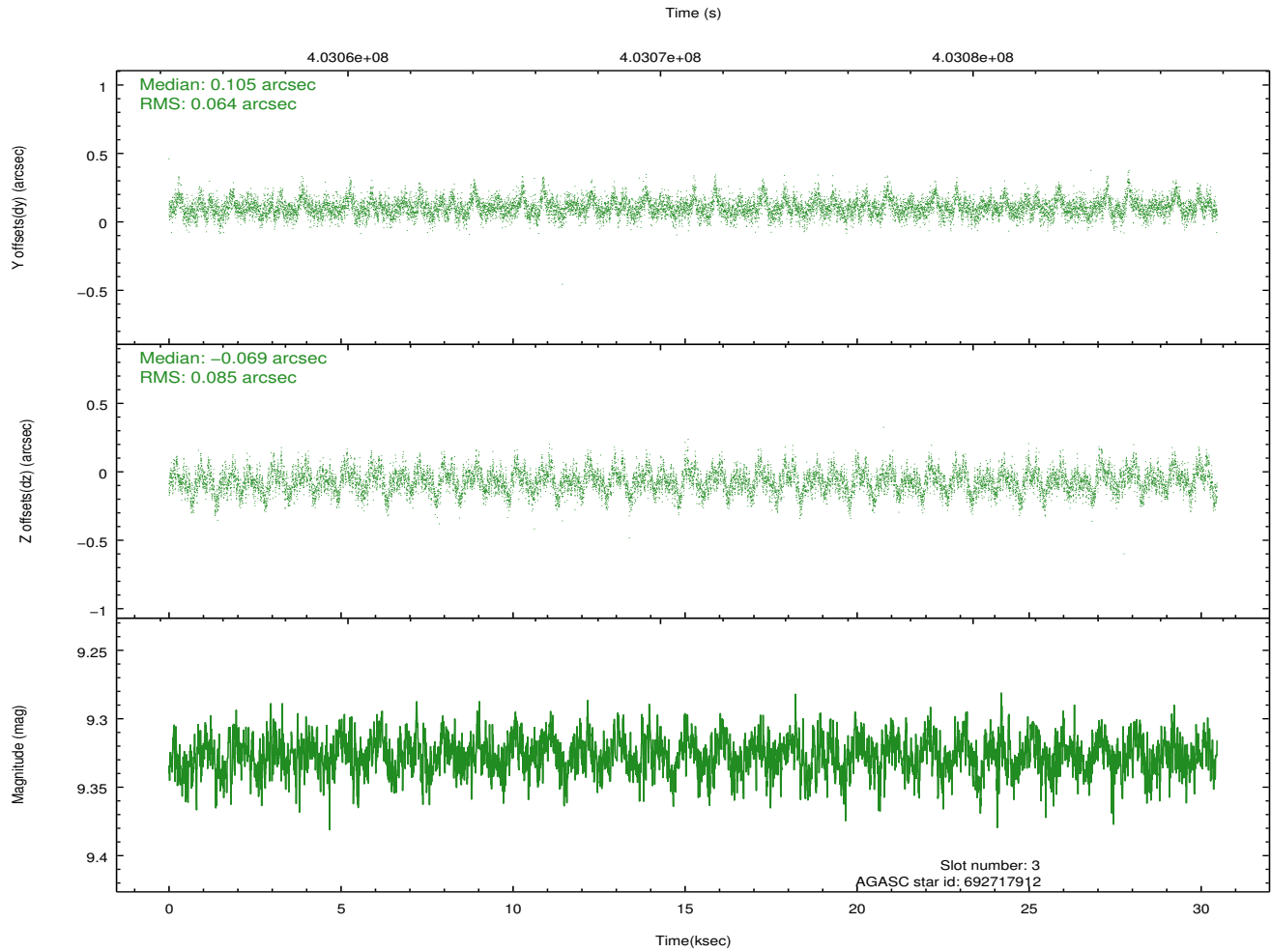
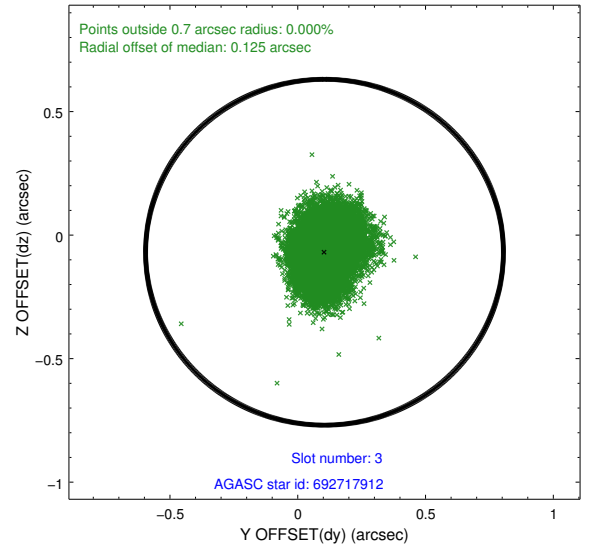
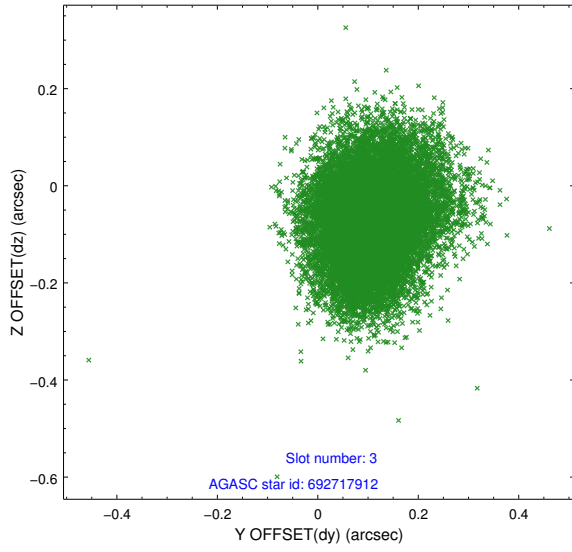


Slot Statistics

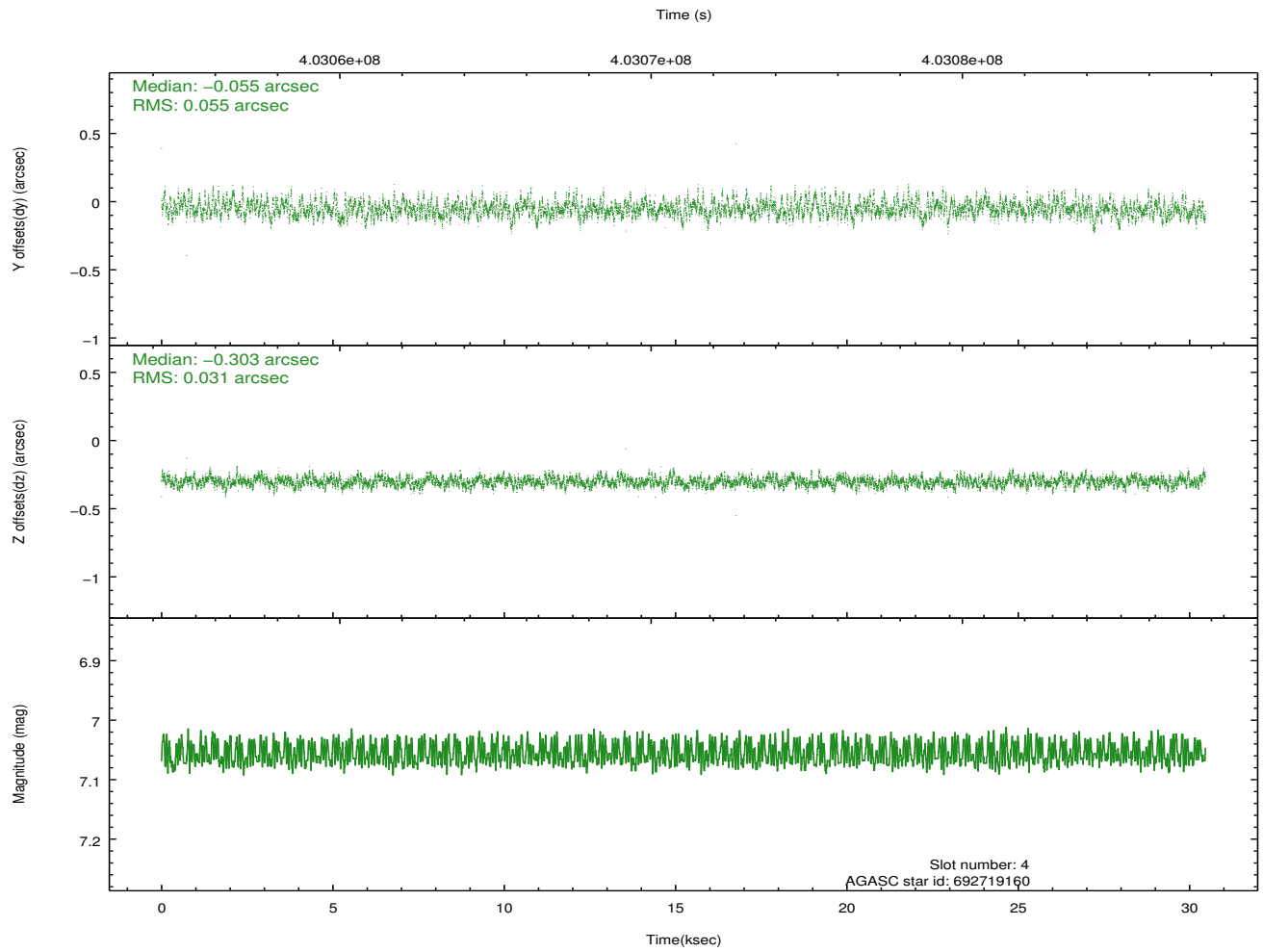
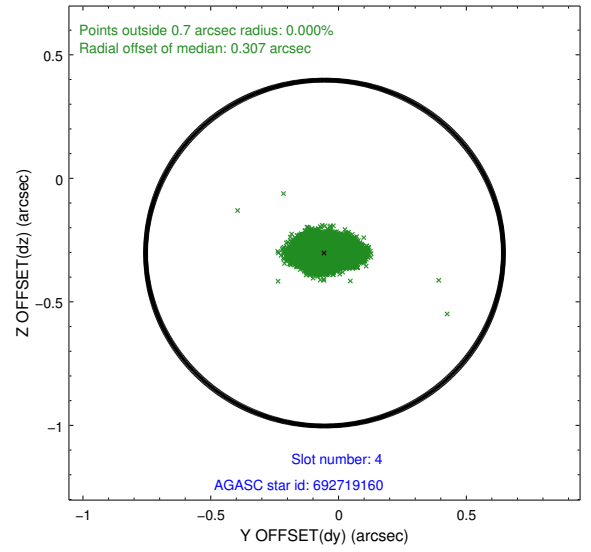
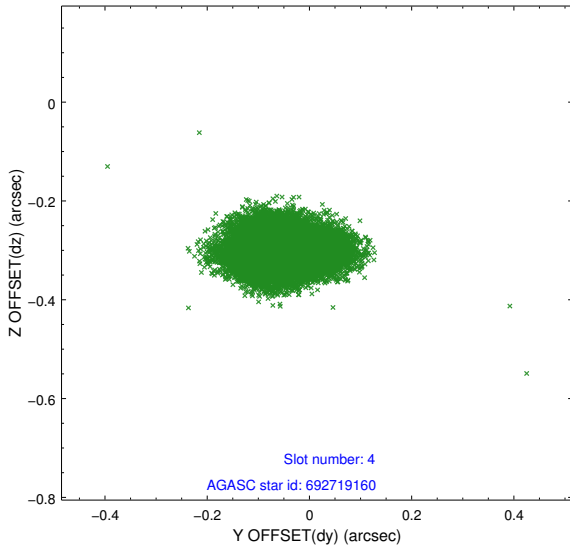
slot	status	id	mag	n_pts	med_dy	med_dz	dr1	dr2	ra	dec	mean_y	mean_z
0	FID	ACIS-S-2	6.95	7431	-0.107	-0.029	0.010	0.023	0.000000	0.000000	-769.33	-1736.83
1	FID	ACIS-S-4	7.04	7430	0.203	0.059	0.009	0.020	0.000000	0.000000	2144.21	171.70
2	FID	ACIS-S-5	7.07	7431	-0.129	-0.021	0.010	0.019	0.000000	0.000000	-1822.12	165.33
3	GUIDE	692717912	9.33	14850	0.105	-0.069	0.113	0.186	39.833965	-8.248709	77.27	1168.95
4	GUIDE	692719160	7.06	14856	-0.055	-0.303	0.066	0.112	39.753341	-8.927886	-2179.60	184.06
5	GUIDE	692720256	8.22	14855	0.044	-0.012	0.082	0.135	40.539277	-8.375926	943.20	-1233.19
6	GUIDE	692721328	8.48	14853	0.002	0.321	0.071	0.113	39.989942	-8.868254	-1571.58	-432.06
7	GUIDE	692723168	8.54	14852	-0.102	0.072	0.080	0.127	40.831966	-8.281919	1758.23	-1965.56

2.4 Star Slots

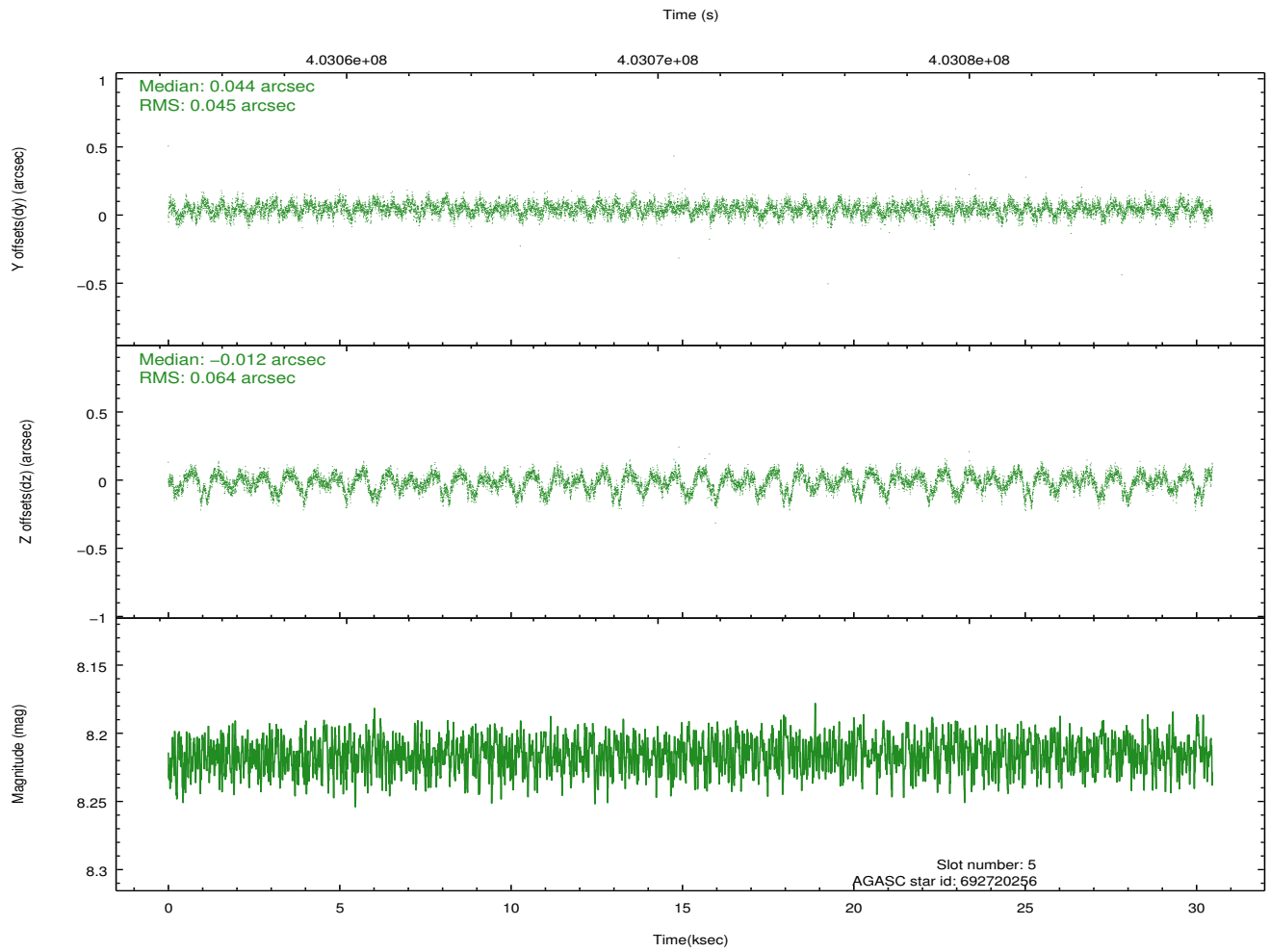
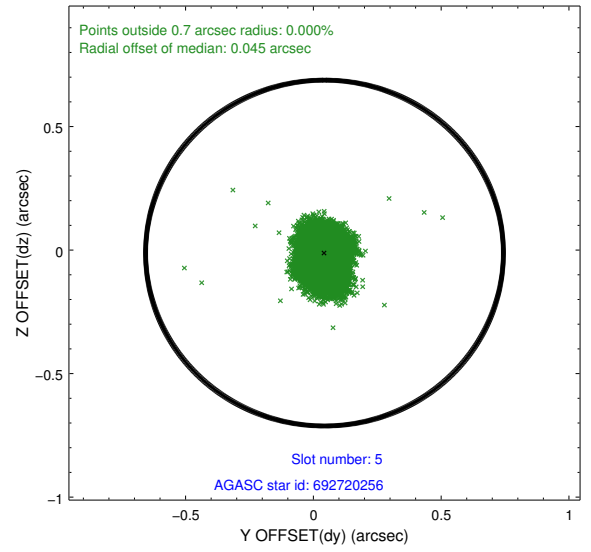
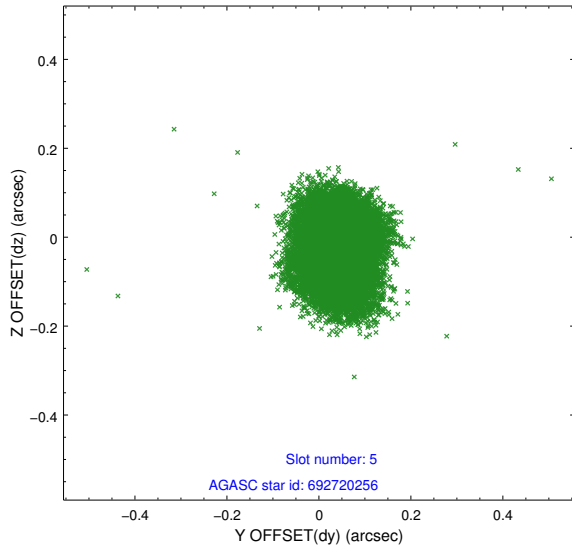
2.4.1 Slot 3



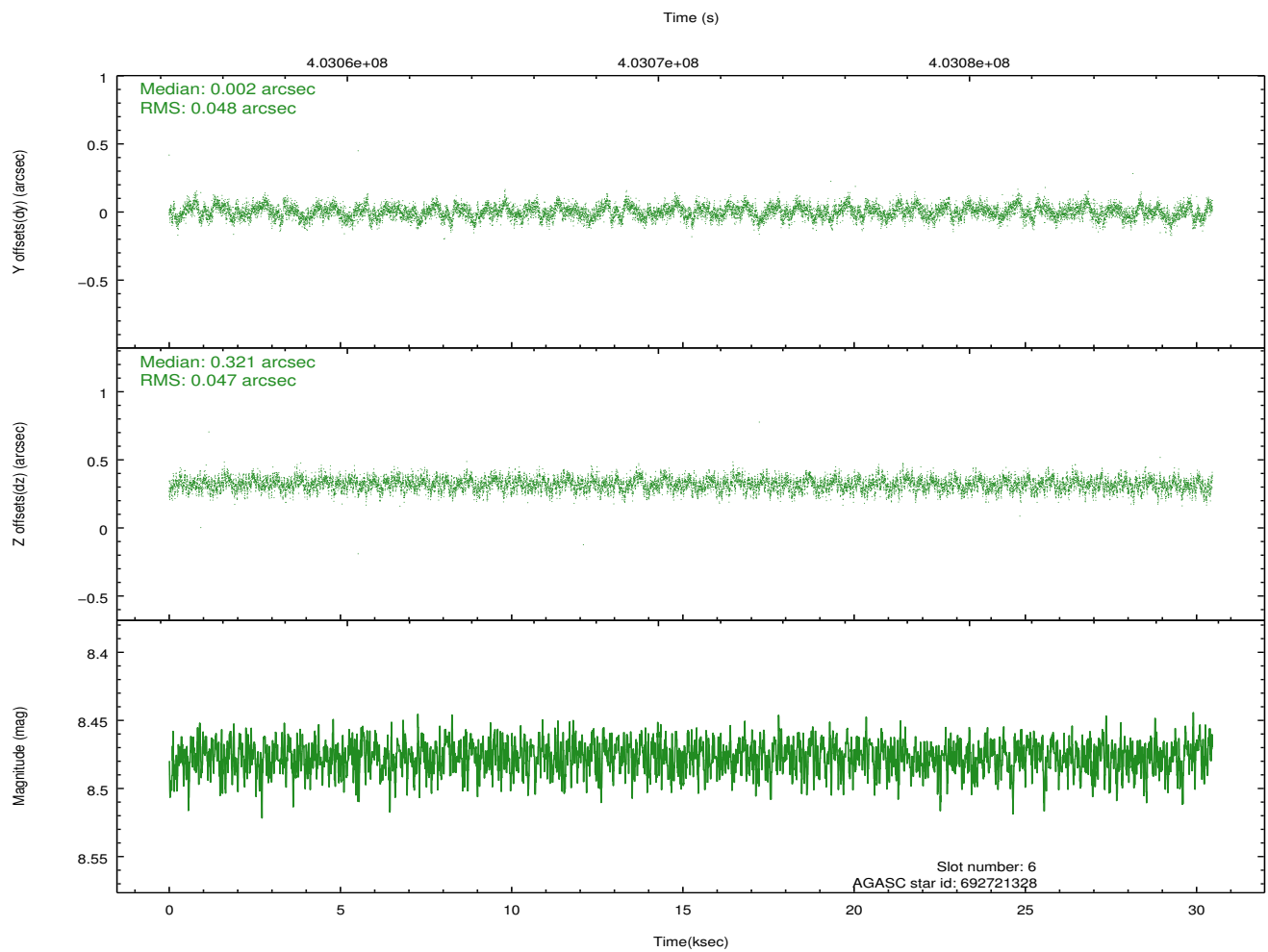
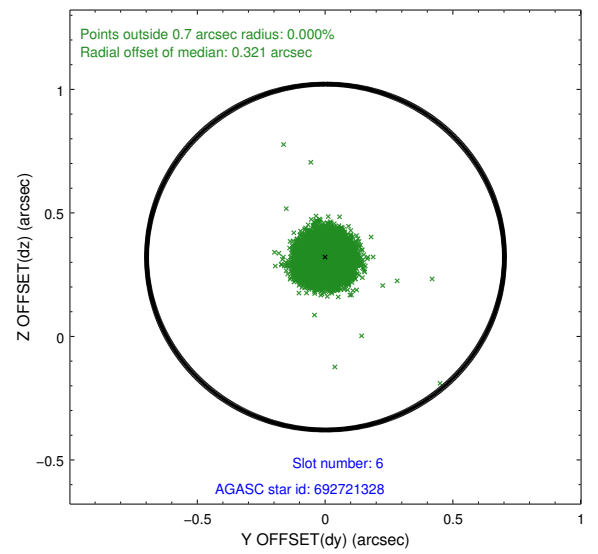
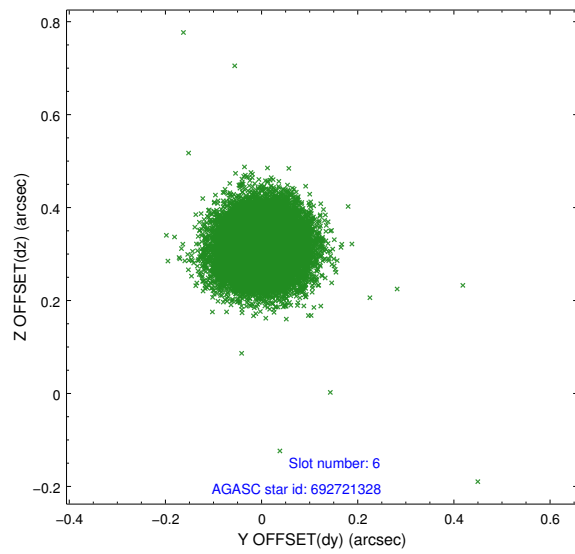
2.4.2 Slot 4



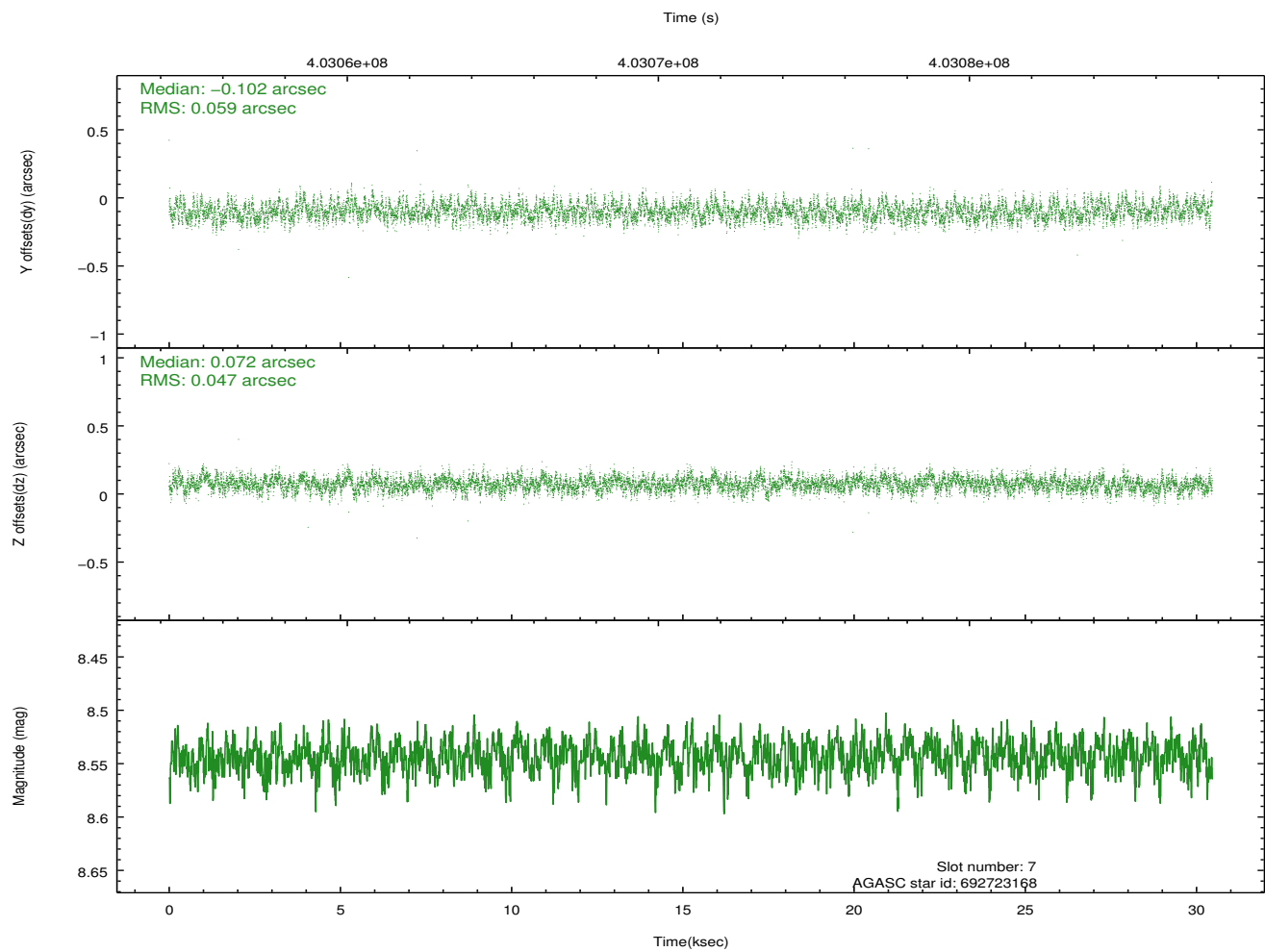
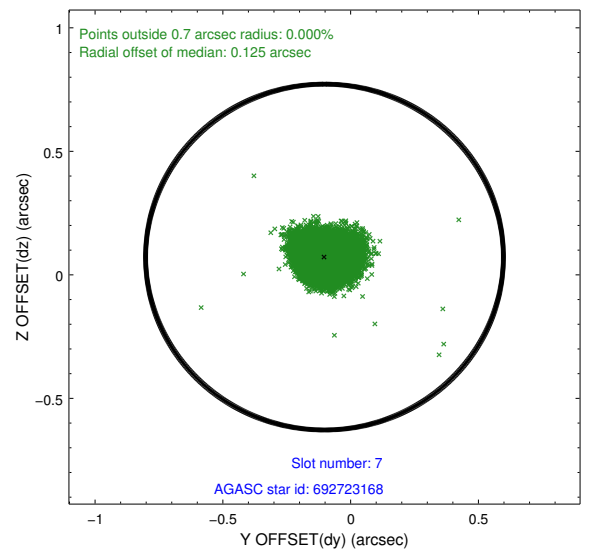
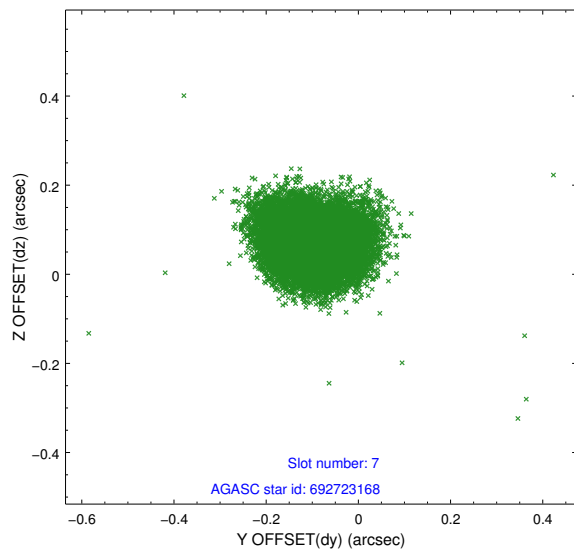
2.4.3 Slot 5



2.4.4 Slot 6

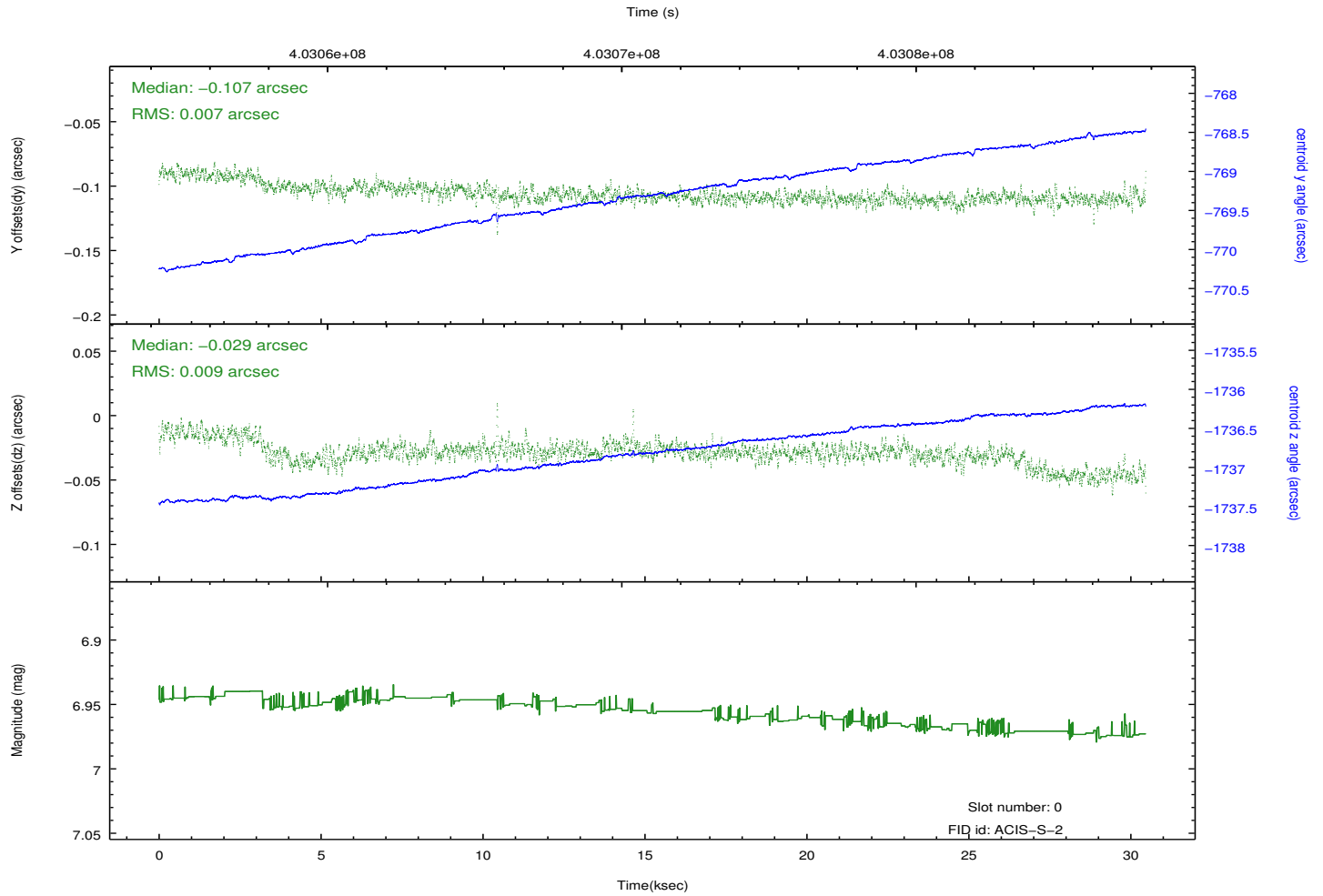
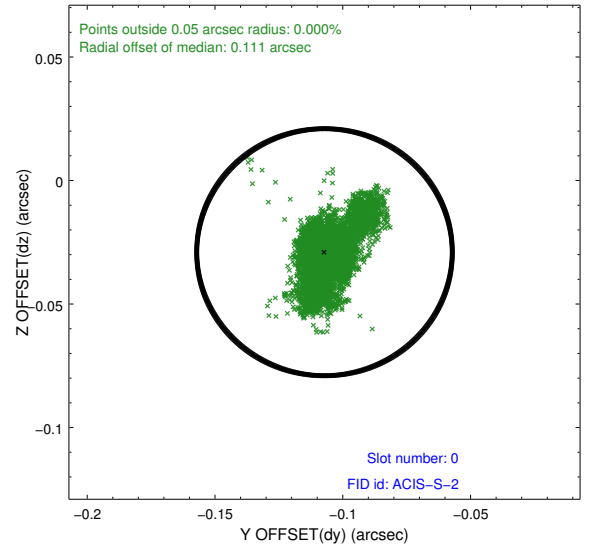
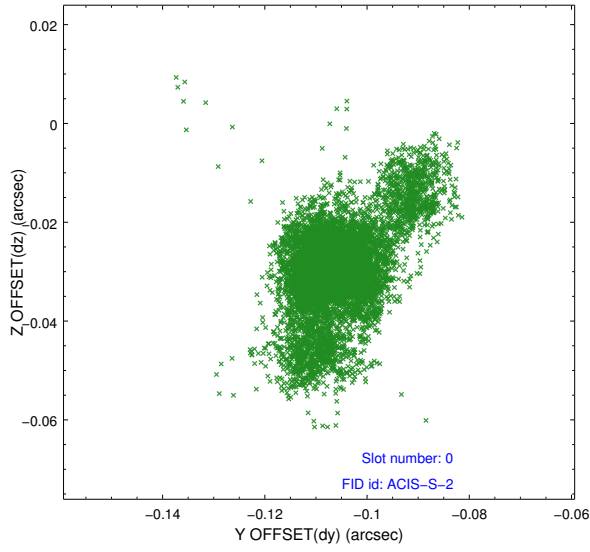


2.4.5 Slot 7

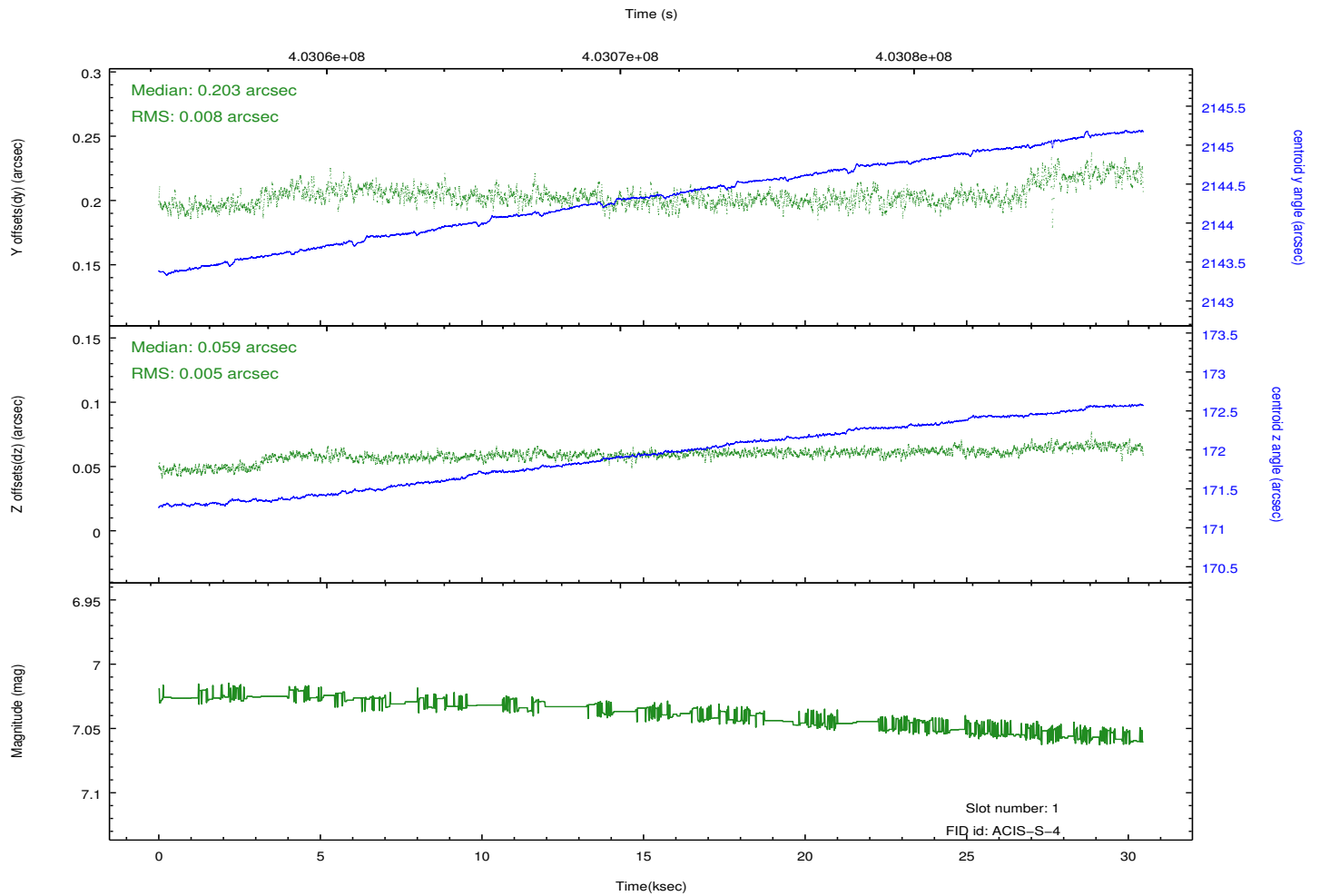
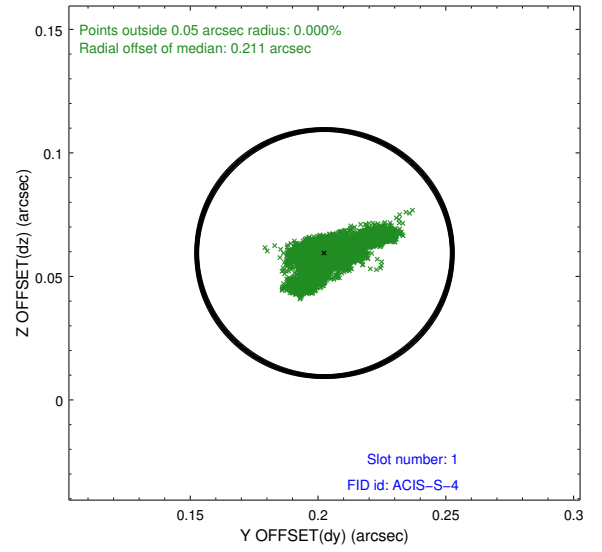
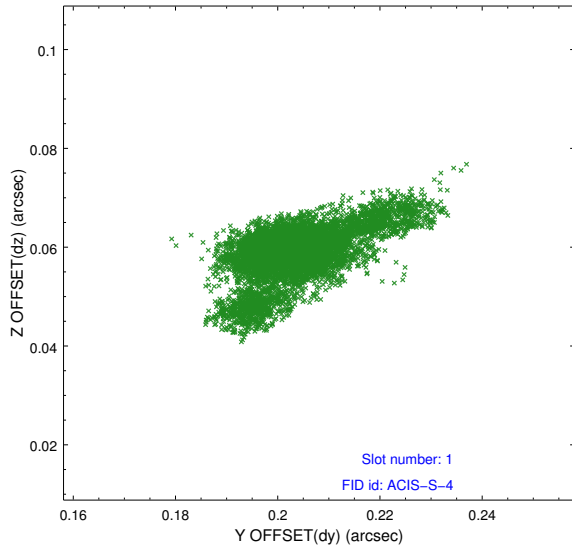


2.5 FID Slots

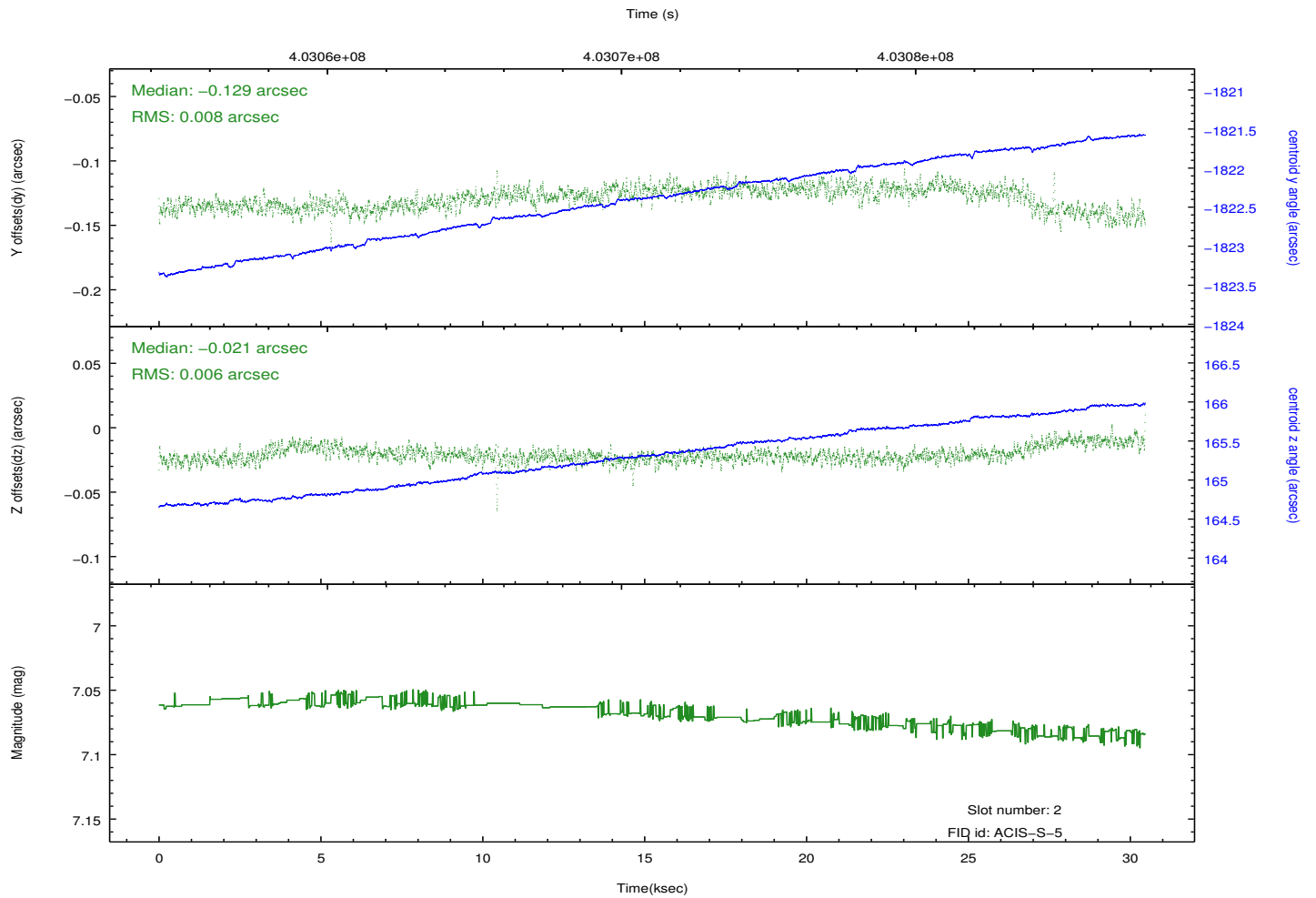
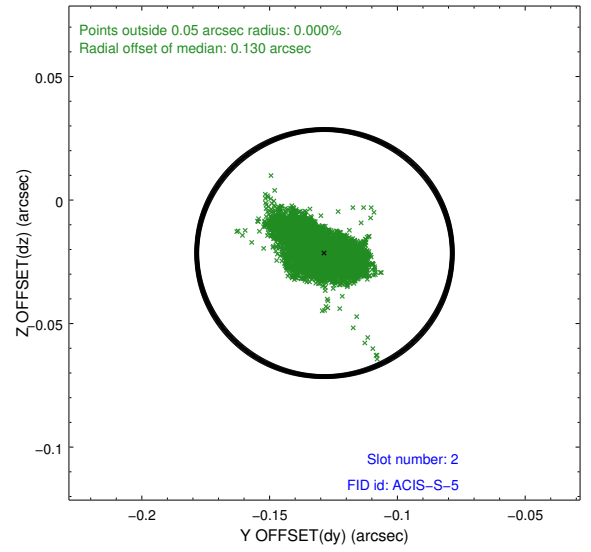
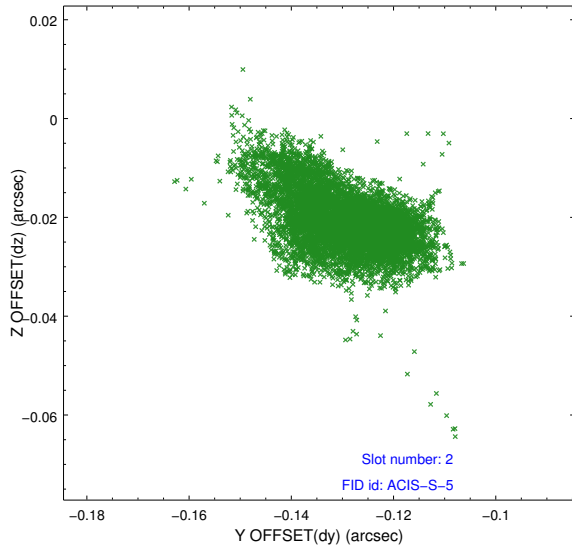
2.5.1 Slot 0



2.5.2 Slot 1



2.5.3 Slot 2



A Summary

A.1 Status

V&V Scientist	Beth Sundheim
V&V Date (YYYY-MM-DD)	2012.07.13
V&V Edition	1
V&V Disposition and Status	OK
V&V Charge Time	30.096860082388

A.2 Comments