

V&V Reference Report

L2 ASCDS Version : 8.4.3

Observation 13398 - L2 Version 2
Chandra X-Ray Center

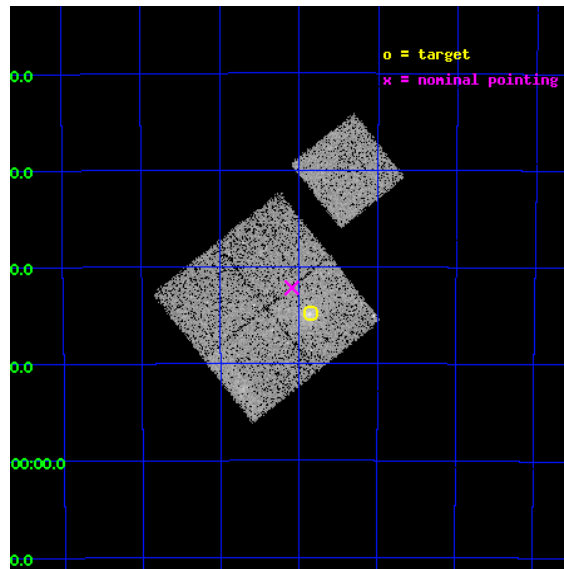
L2 Processing Date : Mar 19 2012

Contents

1	Front	2
2	OBI	3
2.1	OBI	3
2.1.1	Images	3
2.1.2	Bias	3
2.1.3	Parameters	4
2.1.4	Events	4
2.2	Compared Parameters	5
2.3	Aspect	6
2.4	Star Slots	9
2.4.1	Slot 3	9
2.4.2	Slot 4	10
2.4.3	Slot 5	11
2.4.4	Slot 6	12
2.4.5	Slot 7	13
2.5	FID Slots	14
2.5.1	Slot 0	14
2.5.2	Slot 1	15
2.5.3	Slot 2	16
A	Summary	17
A.1	Status	17
A.2	Comments	17

1 Front

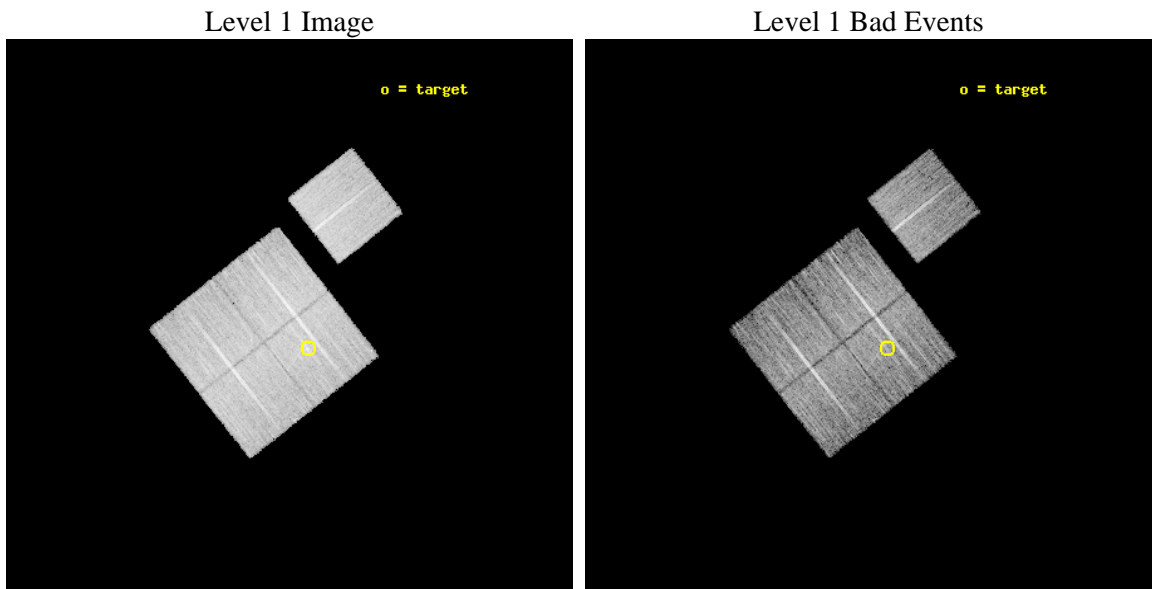
seq_num	801085	Sequence number
obs_id	13398	Observation id
title	Chandra Observations of a Sample of High Redshift SZE Galaxy Clusters	Proposal title
observer	Dr Stephen Murray	Principal investigator
object	SPT-CLJ2145-5644	Source name
dtycycle	0	
cycle	P	events from which exps? Prim/Second/Both
ra_targ	326.464167	Observer's specified target RA [deg]
dec_targ	-56.747111	Observer's specified target Dec [deg]
ra_nom	326.52247999556	Nominal RA [deg]
dec_nom	-56.703068188333	Nominal Dec [deg]
roll_nom	51.695191471646	Nominal Roll [deg]
revision	2	Processing version of data
ontime	15053.559085429	Sum of GTIs [s]
livetime	14856.873253709	Livetime [s]
ontime0	15056.7001158	Sum of GTIs [s]
ontime1	15050.418045402	Sum of GTIs [s]
ontime2	15056.7001158	Sum of GTIs [s]
ontime3	15053.559085429	Sum of GTIs [s]
ontime6	15056.7001158	Sum of GTIs [s]
l2events	46111	Number of level 2 events



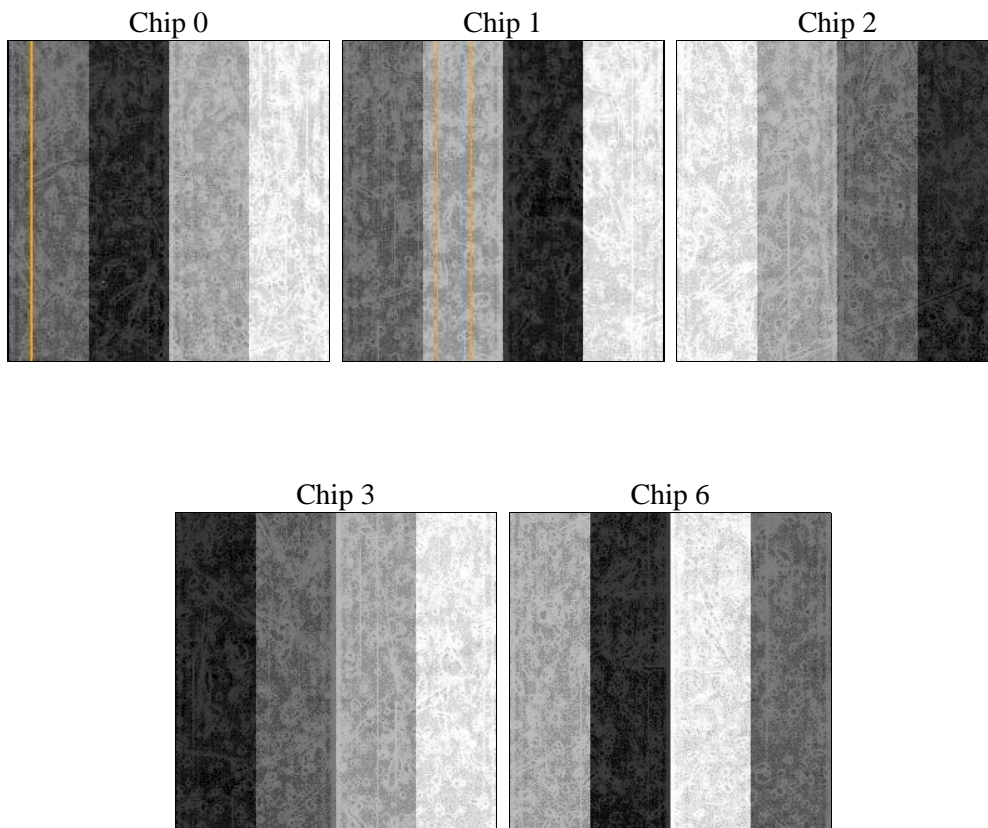
2 OBI

2.1 OBI

2.1.1 Images



2.1.2 Bias



2.1.3 Parameters

obi_num	0	Obi number	sched_exp_time	15000.000000	[s] Scheduled observation exposure time
ascdsver	8.4.3	Processing system revision	ontime	15053.559085429	Sum of GTIs [s]
caldbver	4.4.8	 	ontime0	15056.7001158	Sum of GTIs [s]
date	2012-03-19T12:32:52	Date and time of file creation	ontime1	15050.418045402	Sum of GTIs [s]
revision	2	Processing version of data	ontime2	15056.7001158	Sum of GTIs [s]
			ontime3	15053.559085429	Sum of GTIs [s]
			ontime6	15056.7001158	Sum of GTIs [s]
			l1events	440440	Number of level 1 events

2.1.4 Events

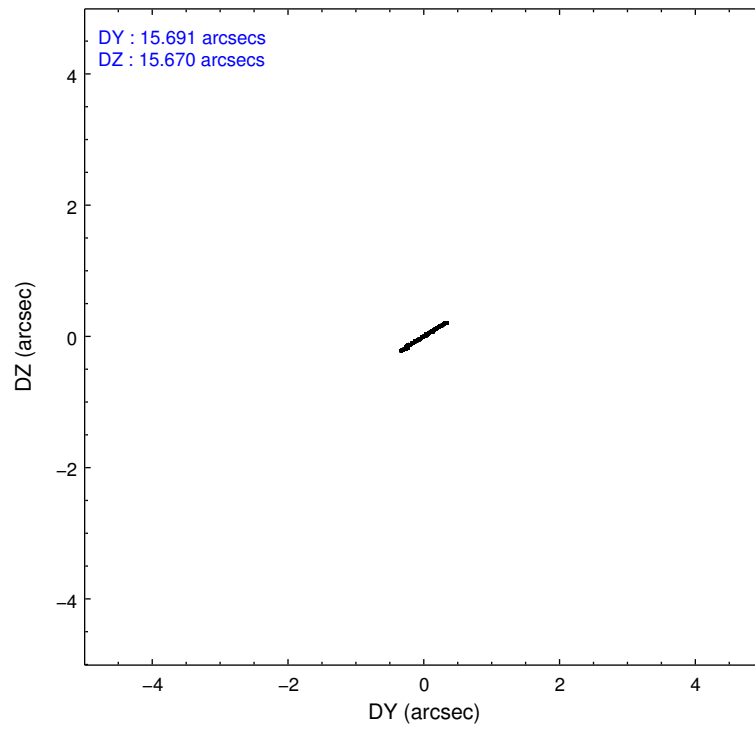
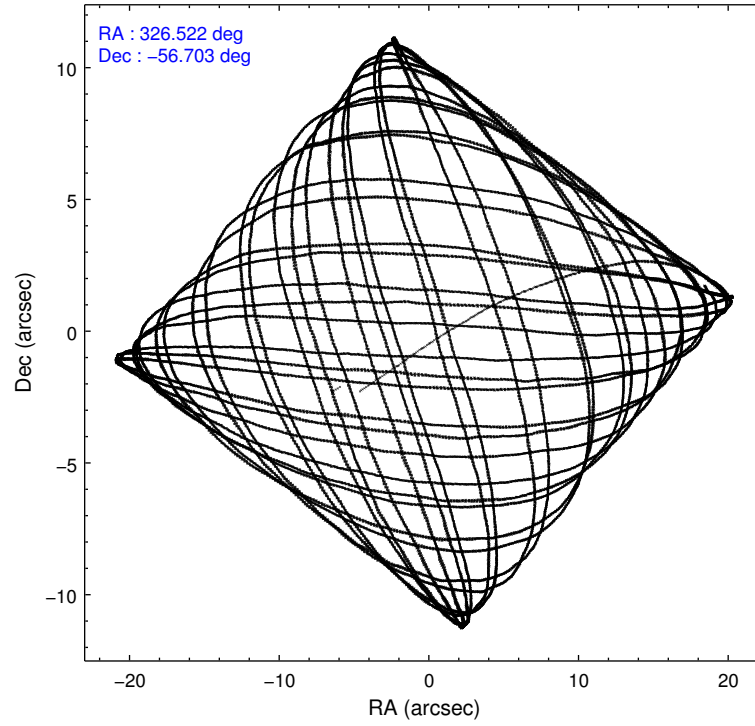
	ccd 0	ccd 1	ccd 2	ccd 3	ccd 6
level 1 events	82000	86204	90805	90000	91431
rejected events	71787	74542	80753	78081	80640
rejected %	87%	86%	88%	86%	88%

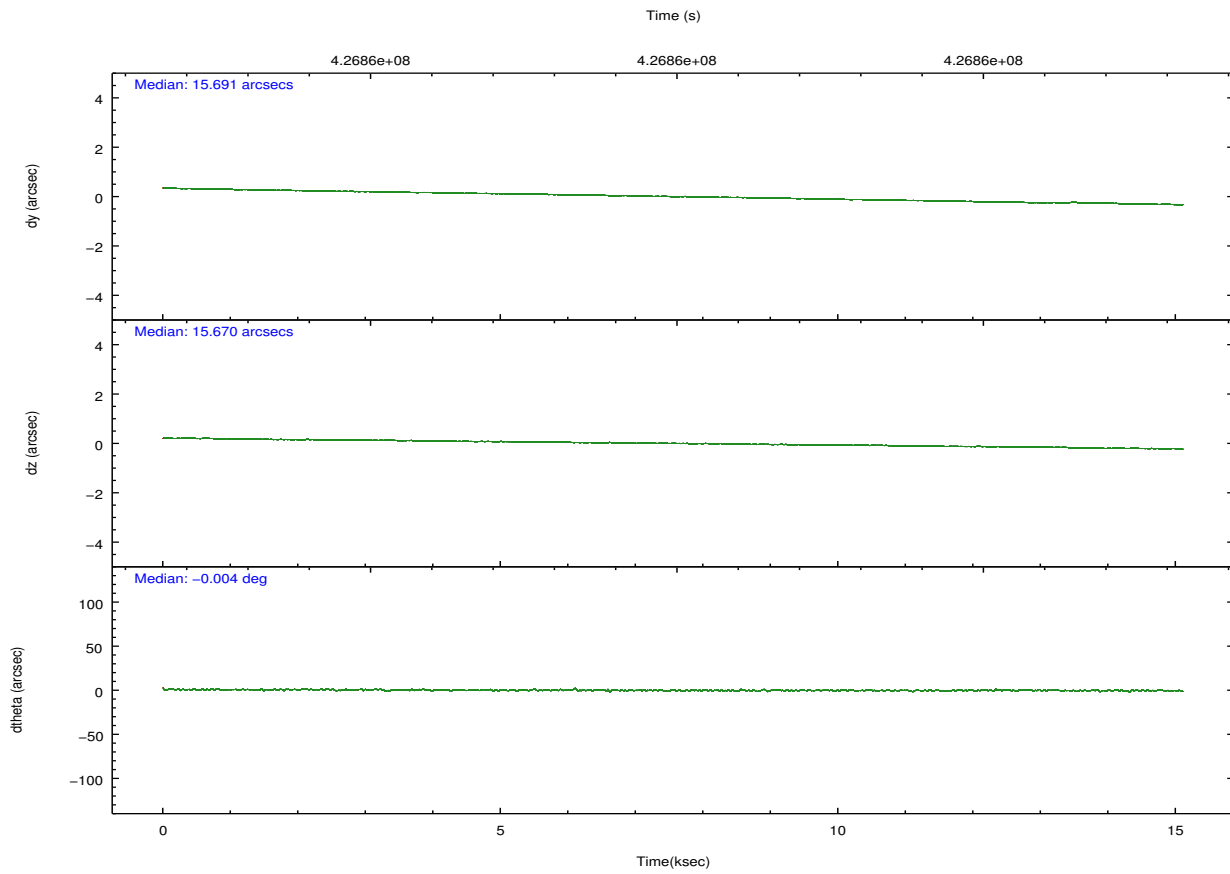
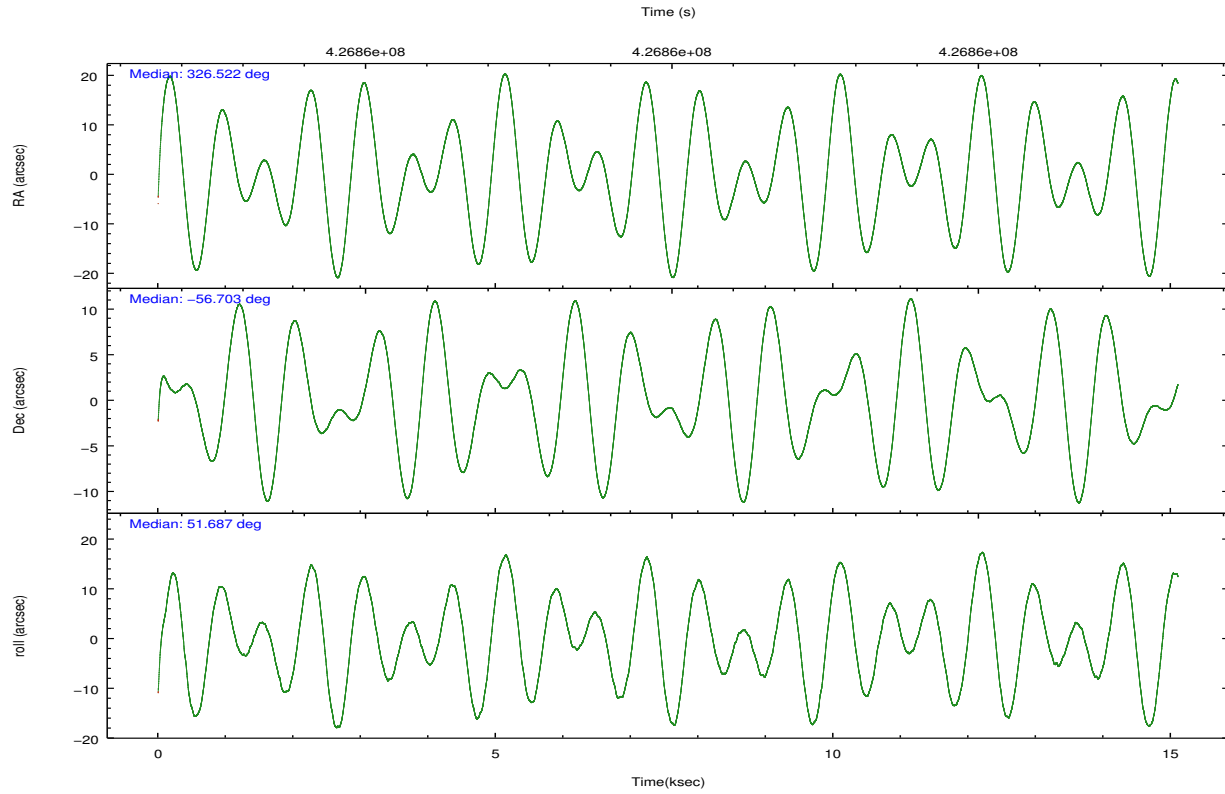
	ccd 0	ccd 1	ccd 2	ccd 3	ccd 6
grade 0 events	3606	4227	3534	5326	3666
	4%	4%	3%	5%	4%
grade 1 events	47	44	50	59	48
	0%	0%	0%	0%	0%
grade 2 events	2472	2731	2437	2301	2431
	3%	3%	2%	2%	2%
grade 3 events	1054	1202	1020	1137	1124
	1%	1%	1%	1%	1%
grade 4 events	1023	1137	1101	1135	1134
	1%	1%	1%	1%	1%
grade 5 events	3937	4277	3651	4398	4241
	4%	4%	4%	4%	4%
grade 6 events	2059	2368	1960	2022	2436
	2%	2%	2%	2%	2%
grade 7 events	67802	70218	77052	73622	76351
	82%	81%	84%	81%	83%

2.2 Compared Parameters

Parameter	Planned	Actual	Parameter	Planned	Actual
Instrument	ACIS	ACIS	Obspar format version number	7	7
Detector	ACIS-01236	ACIS-01236	Obspar file type	PREDICTED	ACTUAL
Grating	NONE	NONE	Obspar update status	NONE	UPDATED
Data mode	VFAINT	VFAINT	CCD I0 on	Y	Y
Observation mode	POINTING	POINTING	CCD I1 on	Y	Y
[deg] Pointing RA	326.515417	326.5224799955587	CCD I2 on	Y	Y
[deg] Pointing Dec	-56.730287	-56.70306818833291	CCD I3 on	Y	Y
[deg] Pointing Roll	51.480600	51.69519147164578	CCD S0 on	N	N
[mm] SIM focus pos	-0.782348	-0.7809083437167272	CCD S1 on	N	N
[mm] SIM defocus	0	0.001439871863259334	CCD S2 on	O1	Y
[mm] SIM translation stage pos	-225.840463	-225.8433433320239	CCD S3 on	N	N
[mm] SIM translation stage offset	-7.752	-7.749109670905796	CCD S4 on	N	N
[s] Observation start time (MET)	426852497.184000	426850974.41259	CCD S5 on	N	N
Observation start date	2011-07-12T10:07:11	2011-07-12T09:42:54	Number of optional ACIS chips dropped	0	0
[s] Observation end time (MET)	426867497.184000	426868433.75101	On-chip summing requested	N	N
Observation end date	2011-07-12T14:17:11	2011-07-12T14:33:53	Subarray requested	NONE	NONE
Read mode	TIMED	TIMED	Alternating exposures requested	N	N
			[s] Primary exposure time	0.000000	3.1

2.3 Aspect



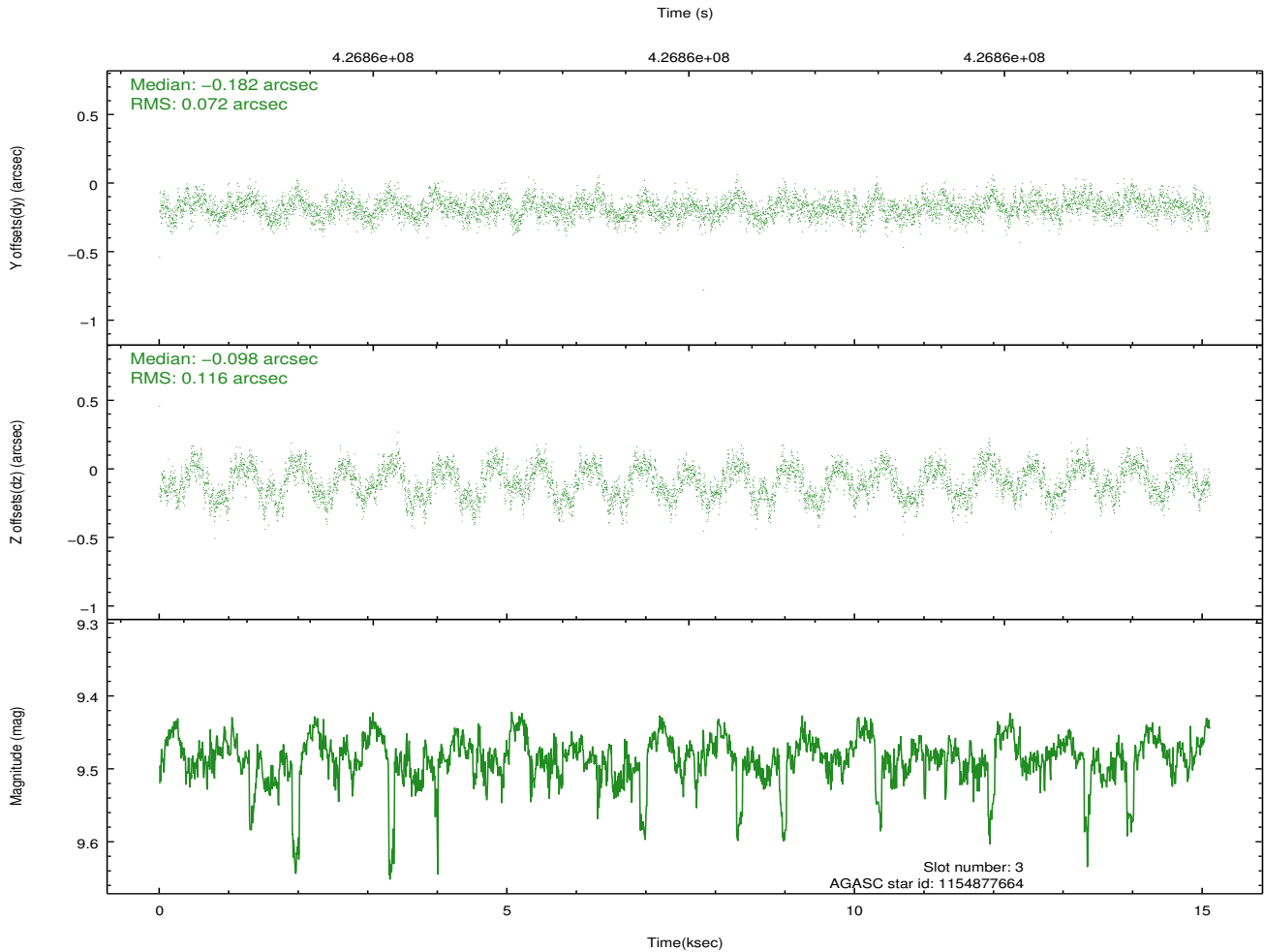
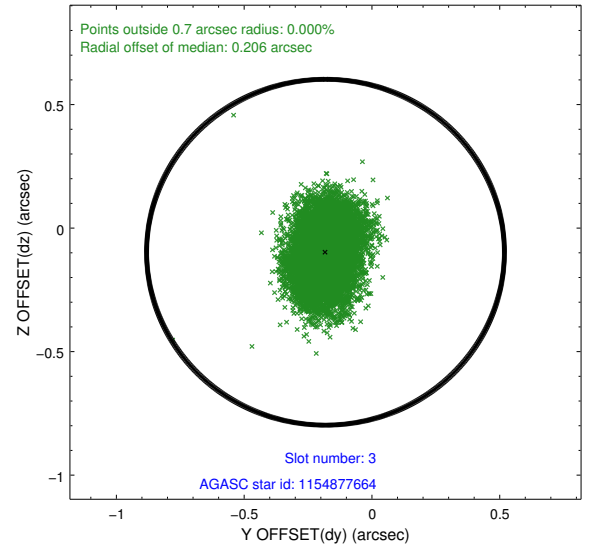
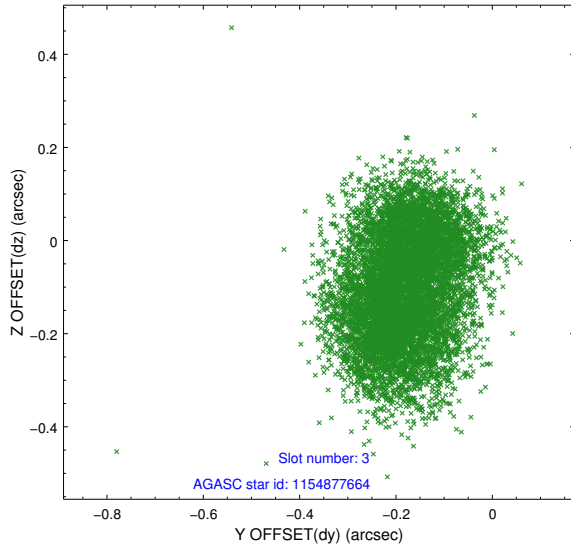


Slot Statistics

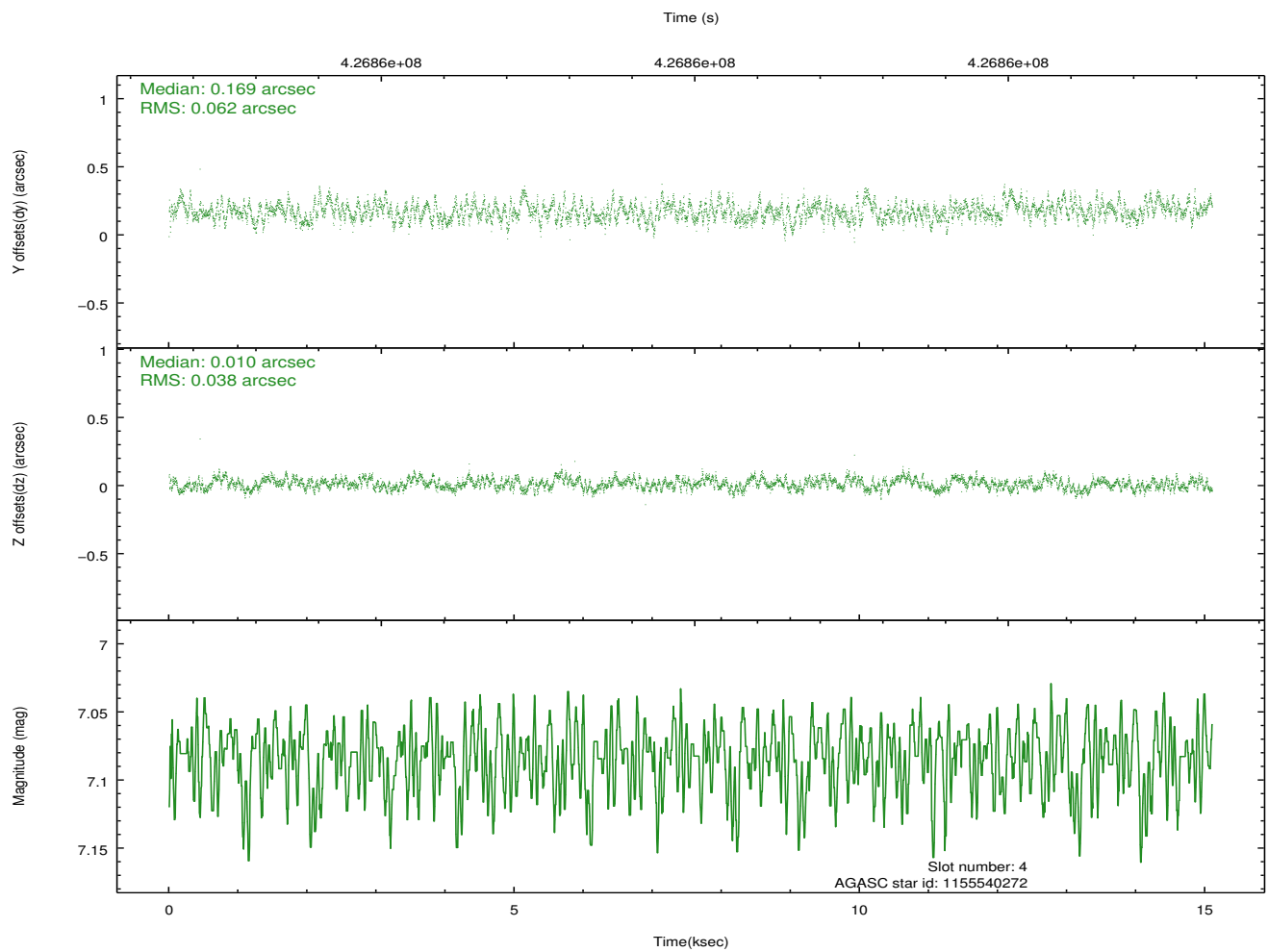
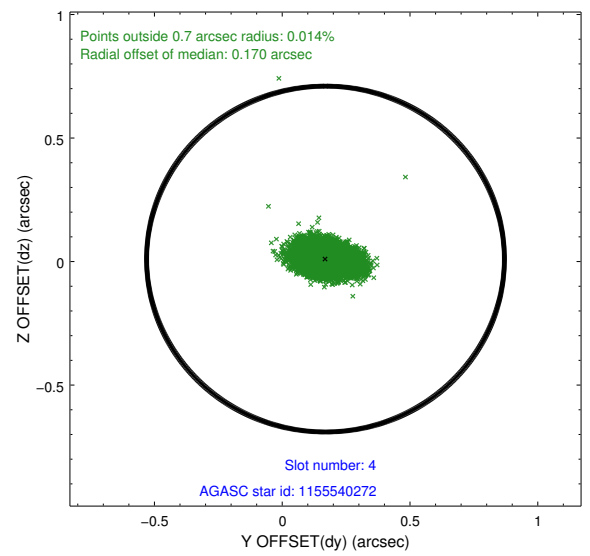
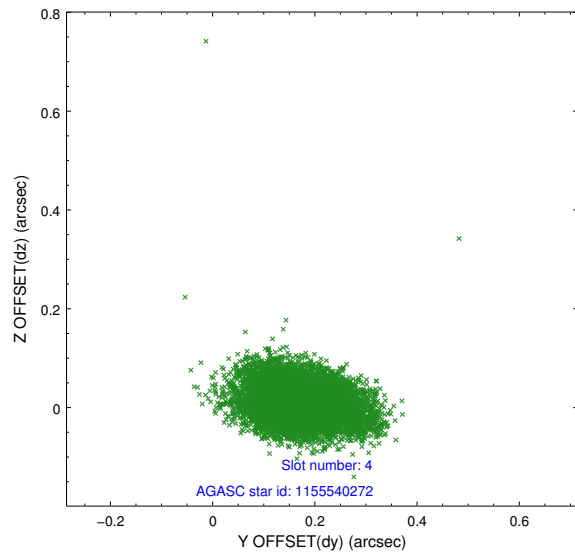
slot	status	id	mag	n_pts	med_dy	med_dz	dr1	dr2	ra	dec	mean_y	mean_z
0	FID	ACIS-I-1	7.08	3685	0.140	-0.168	0.009	0.016	0.000000	0.000000	923.78	-998.50
1	FID	ACIS-I-4	6.98	3685	0.119	0.074	0.008	0.013	0.000000	0.000000	2143.47	902.36
2	FID	ACIS-I-5	7.06	3685	-0.358	0.166	0.009	0.015	0.000000	0.000000	-1824.39	899.55
3	GUIDE	1154877664	9.48	7351	-0.182	-0.098	0.148	0.225	326.135146	-56.126754	1222.81	1948.53
4	GUIDE	1155540272	7.08	7370	0.169	0.010	0.075	0.129	327.226801	-56.274007	2165.42	-93.40
5	GUIDE	1155410320	6.69	7369	-0.005	0.138	0.078	0.133	325.995961	-57.325244	-2308.34	-545.83
6	GUIDE	1155399728	7.05	7369	0.028	0.198	0.078	0.132	326.001575	-57.283054	-2183.94	-458.84
7	GUIDE	1155402752	9.42	7322	-0.020	-0.235	0.139	0.236	325.101642	-56.712054	-1711.18	2207.58

2.4 Star Slots

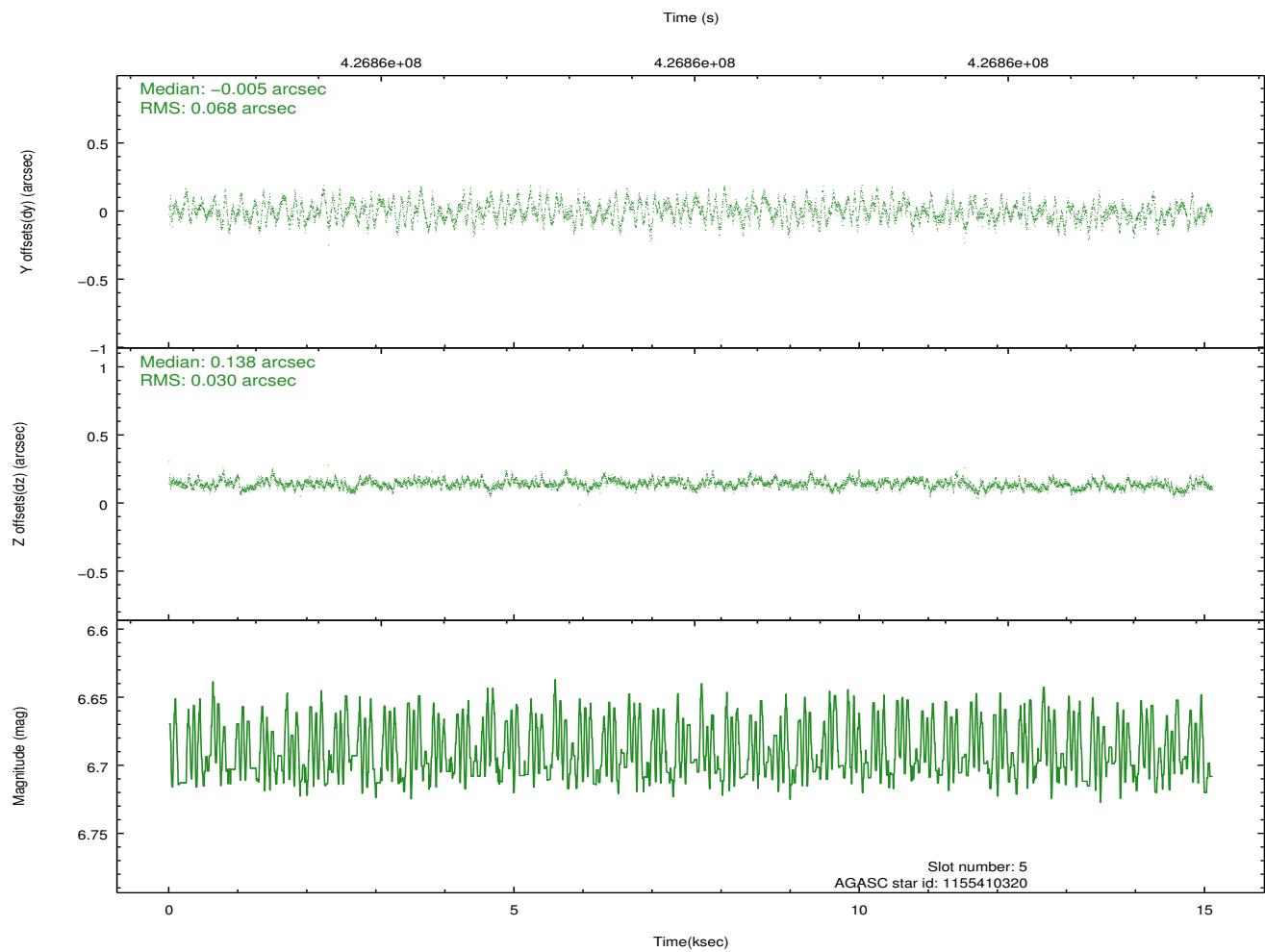
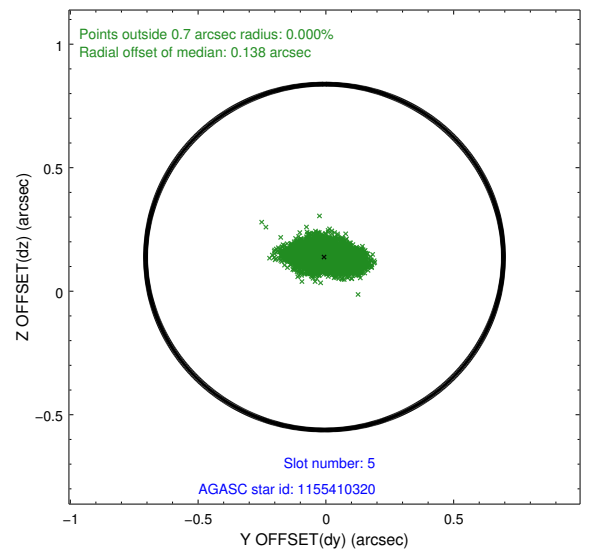
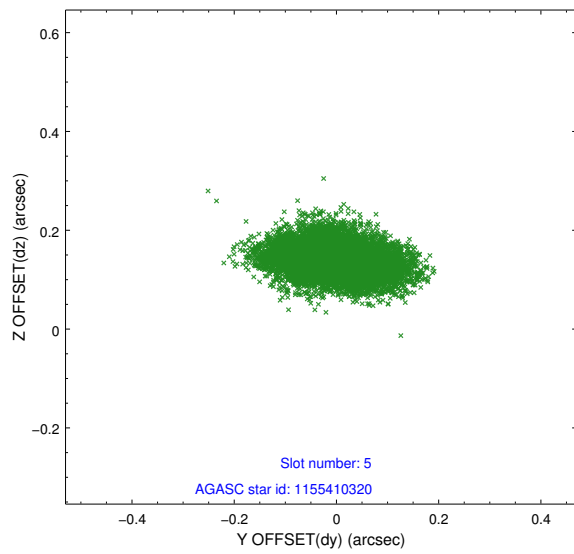
2.4.1 Slot 3



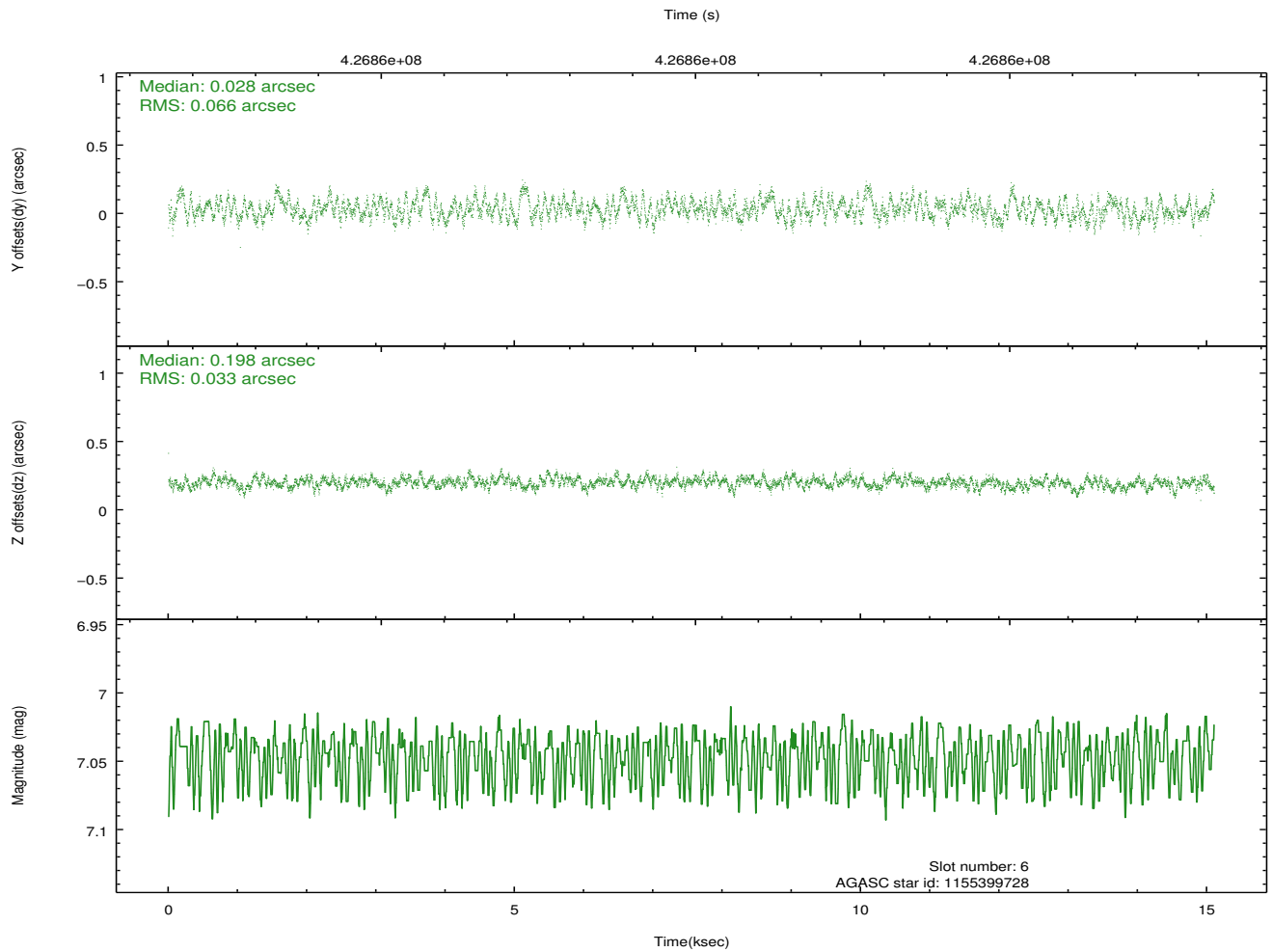
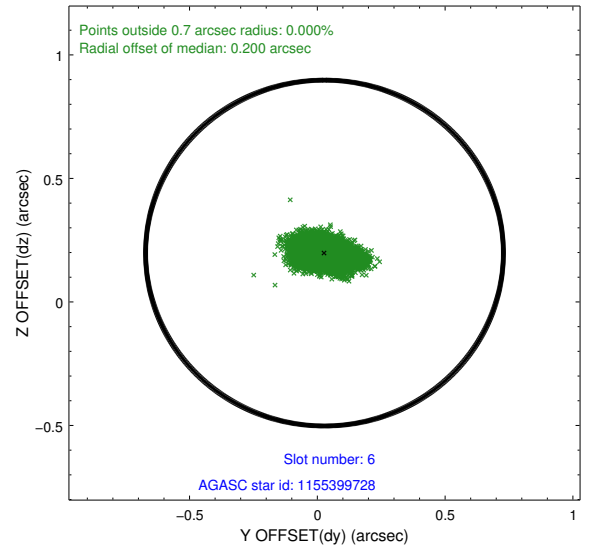
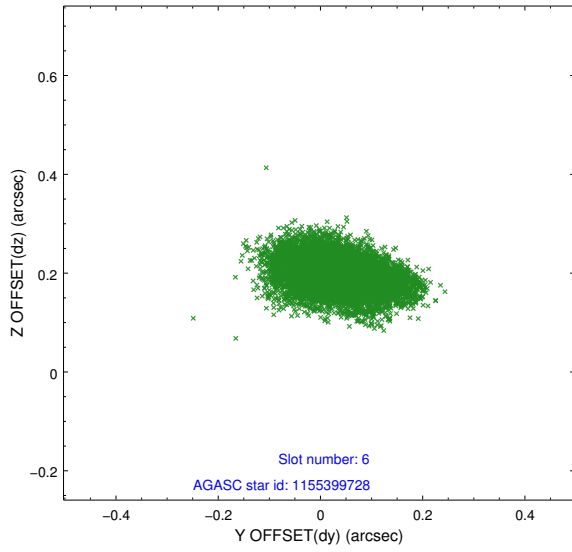
2.4.2 Slot 4



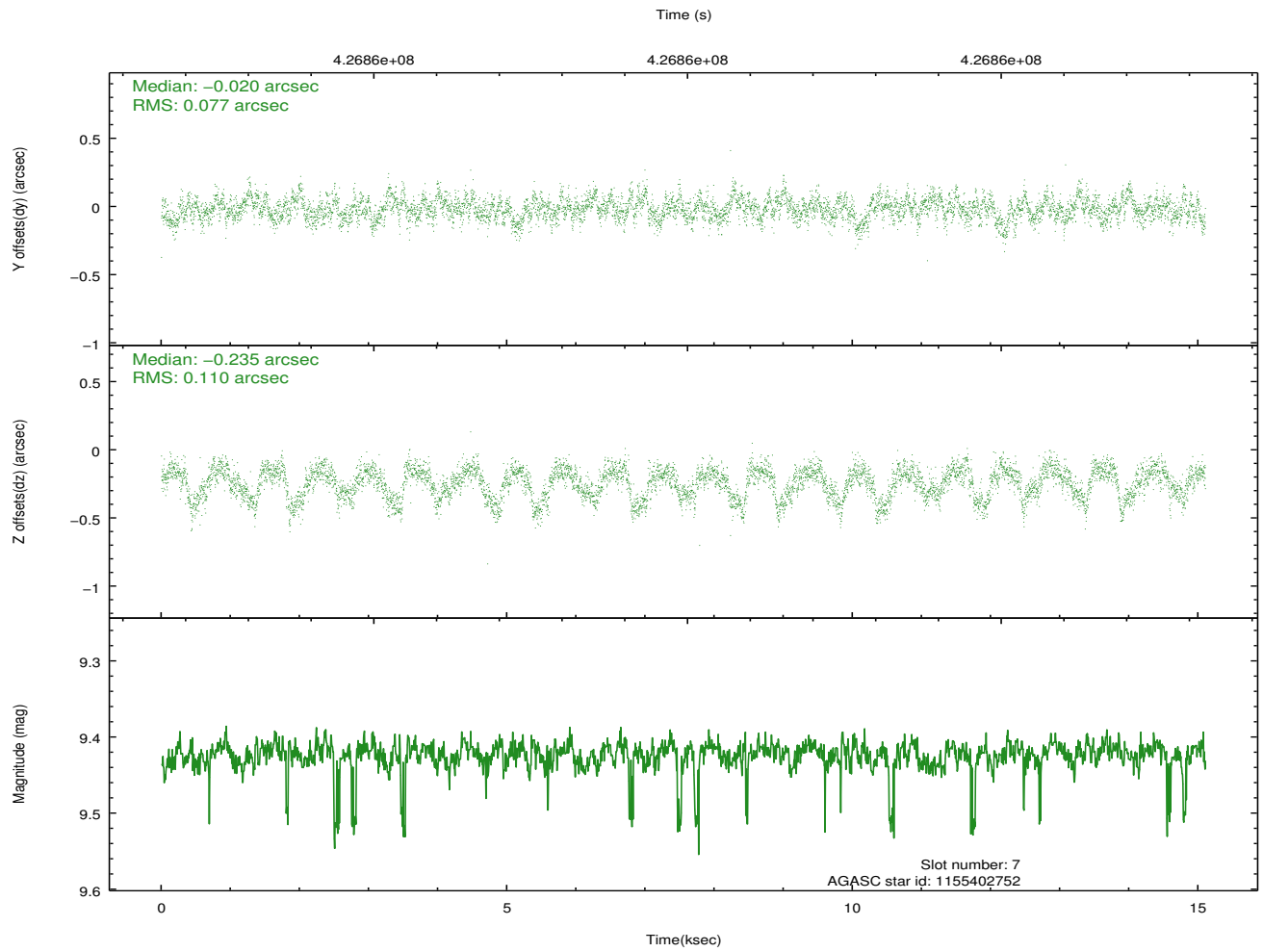
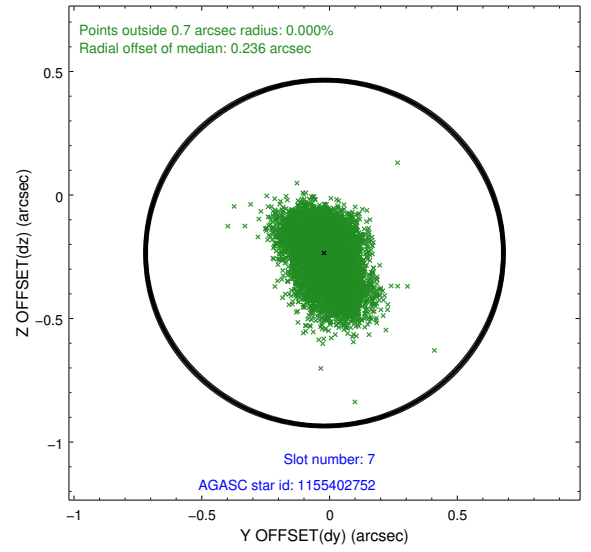
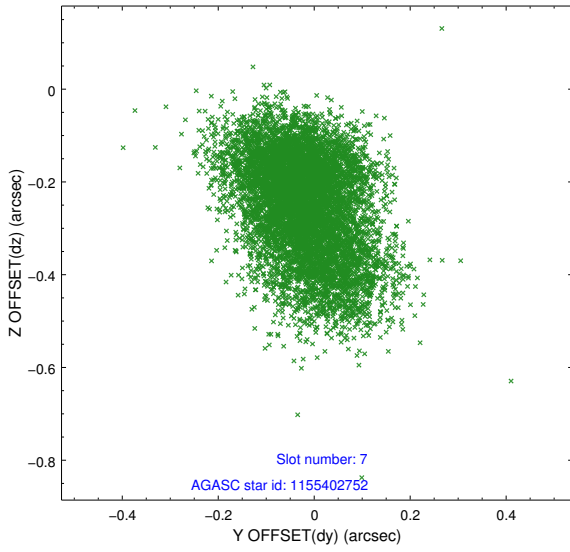
2.4.3 Slot 5



2.4.4 Slot 6

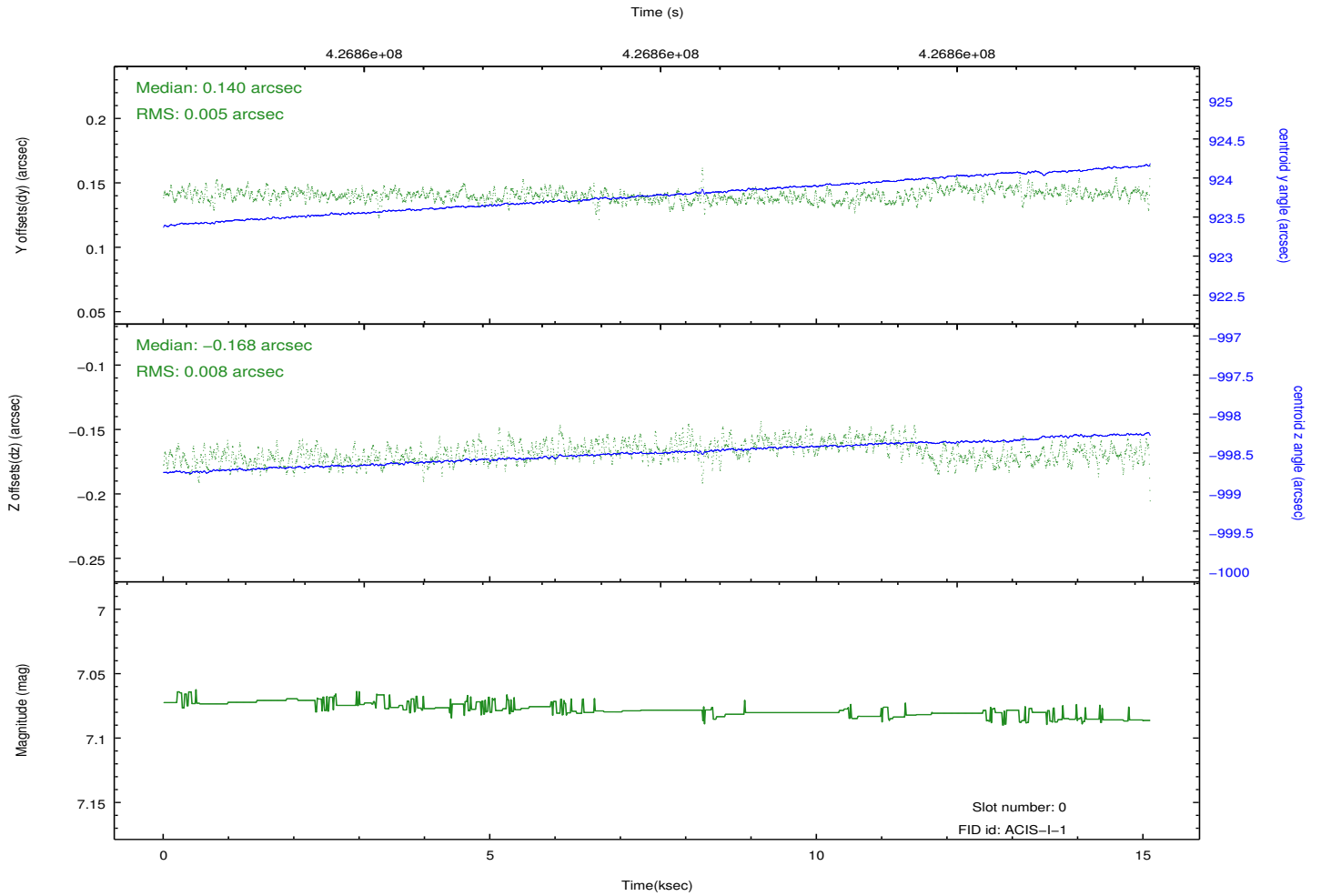
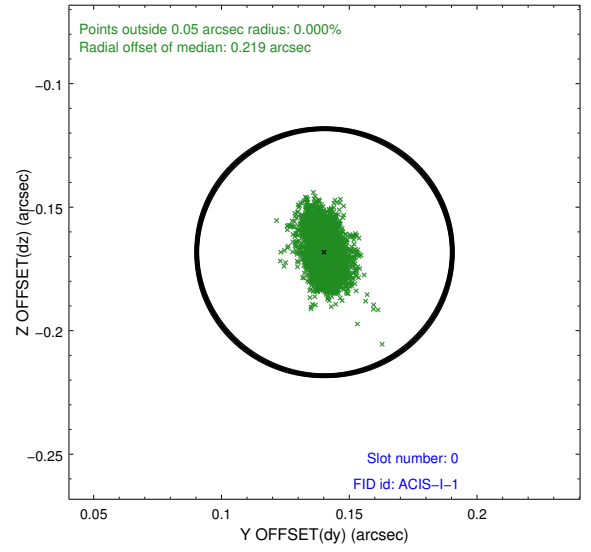
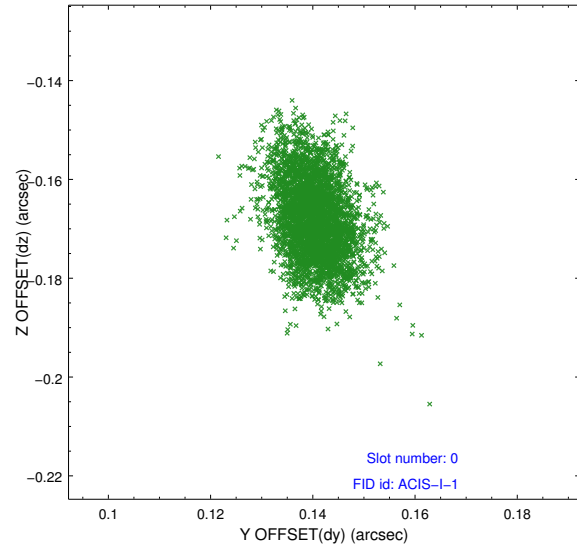


2.4.5 Slot 7

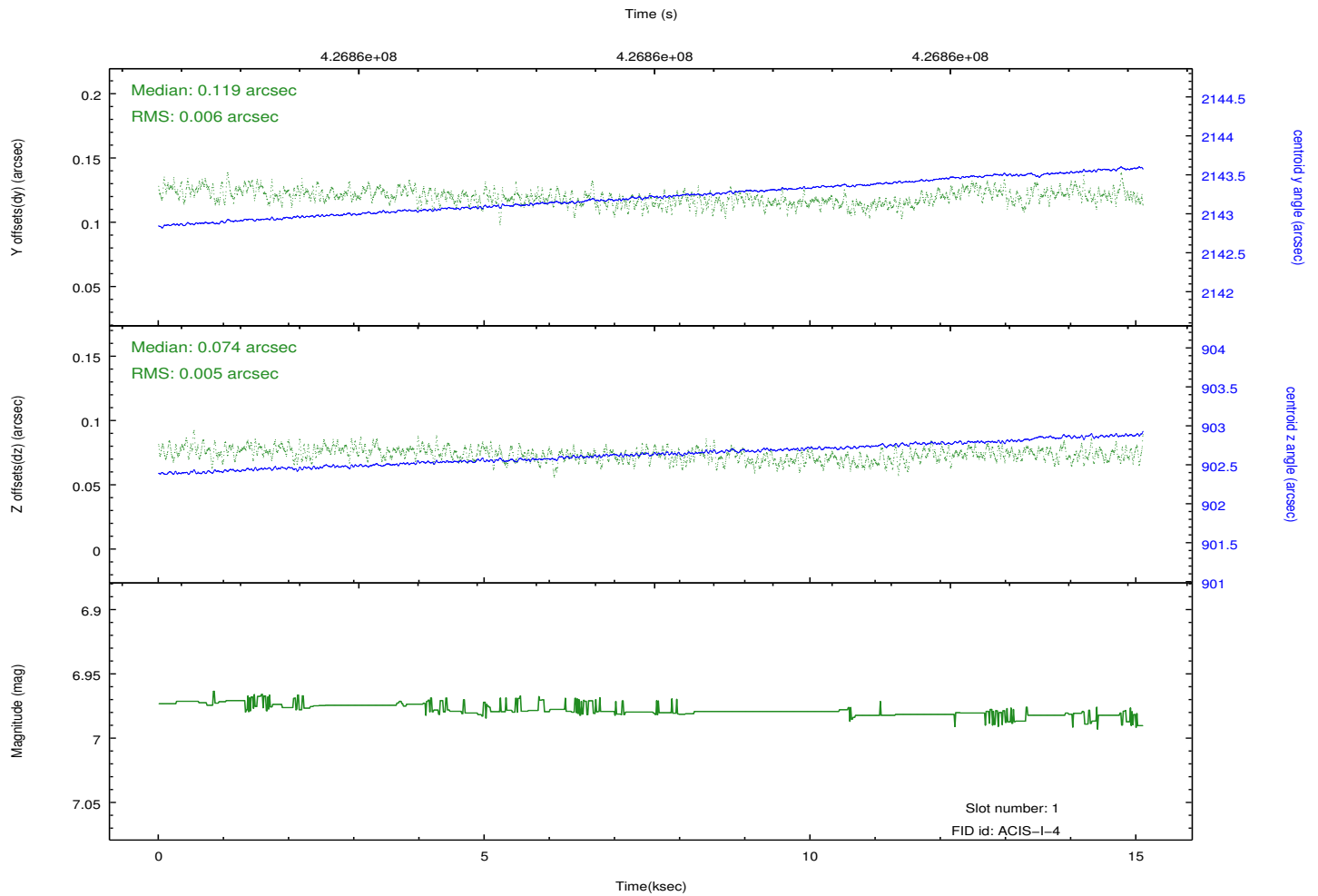
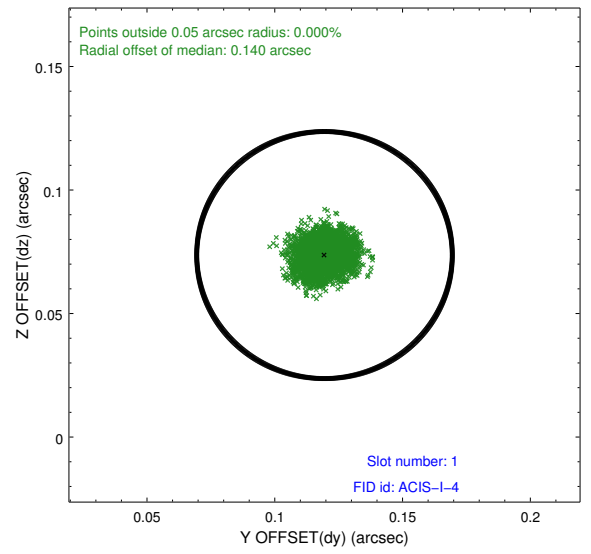
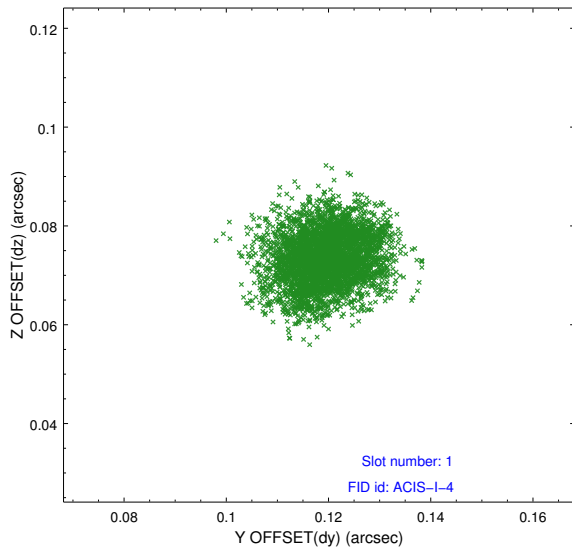


2.5 FID Slots

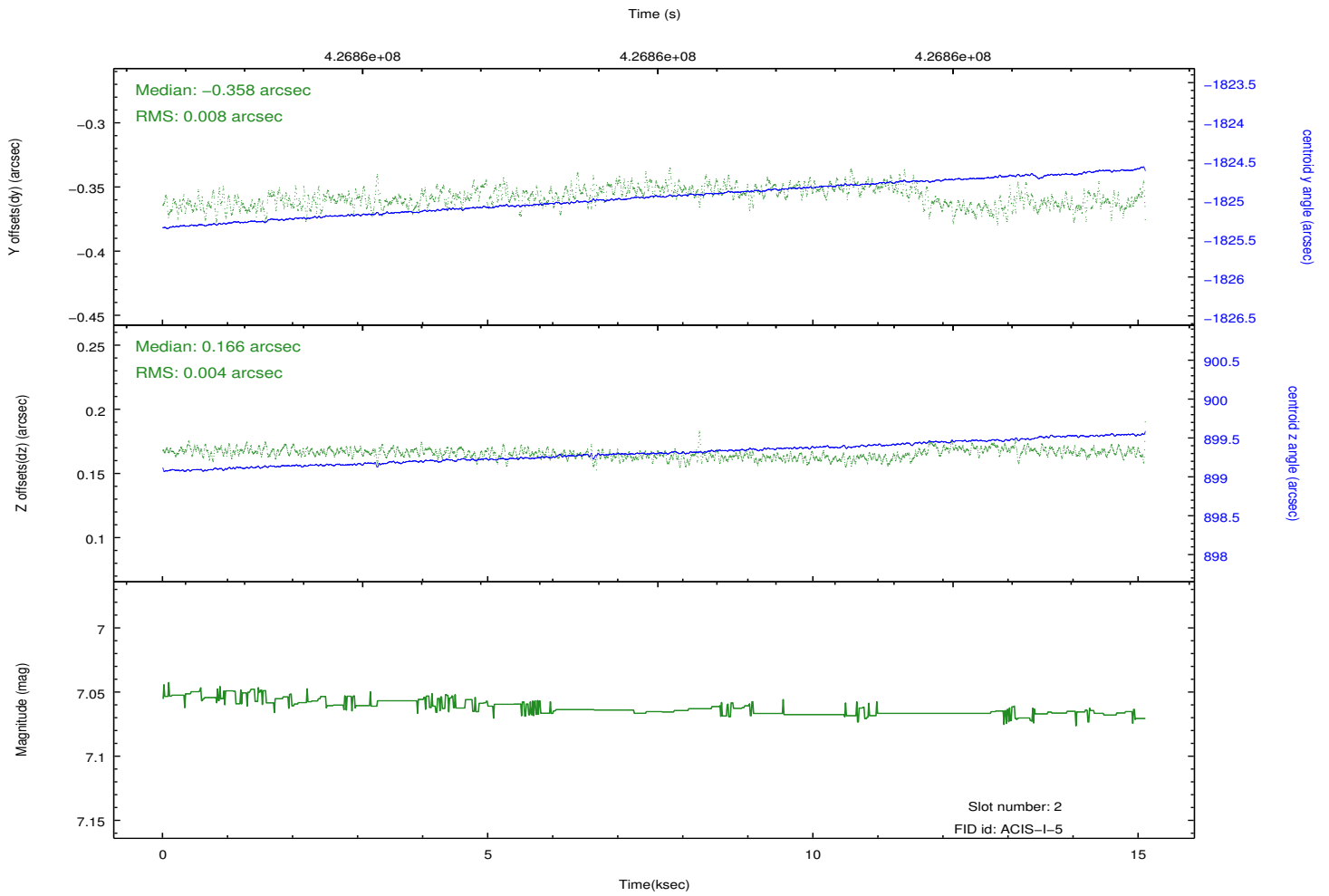
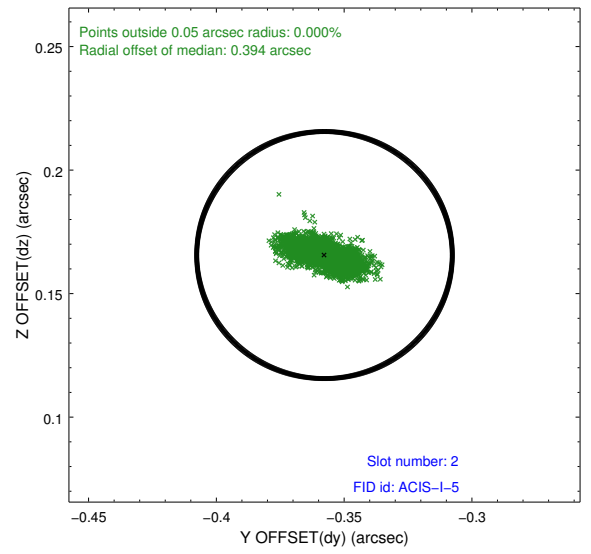
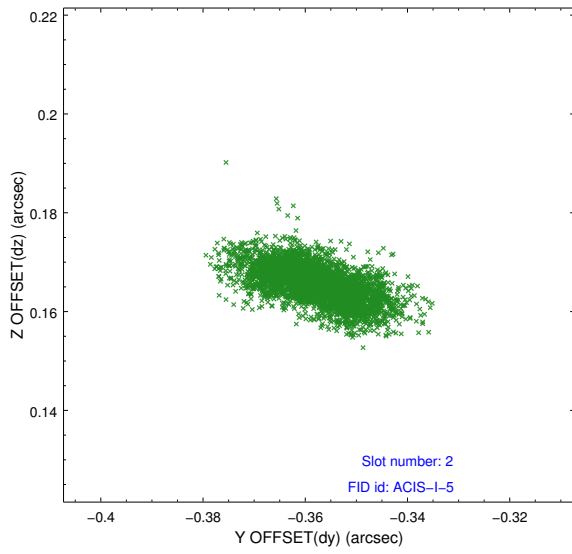
2.5.1 Slot 0



2.5.2 Slot 1



2.5.3 Slot 2



A Summary

A.1 Status

V&V Scientist	Beth Sundheim
V&V Date (YYYY-MM-DD)	2012.03.19
V&V Edition	1
V&V Disposition and Status	OK
V&V Charge Time	15.053559085429

A.2 Comments