

V&V Reference Report

L2 ASCDS Version : 8.4.3

Observation 13508 - L2 Version 2
Chandra X-Ray Center

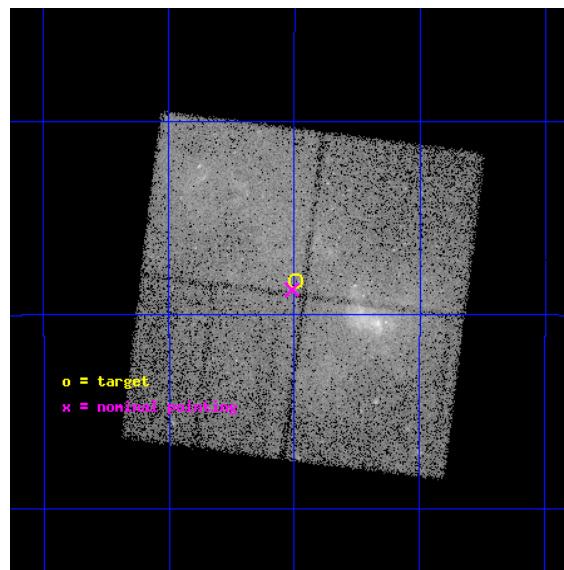
L2 Processing Date : Feb 18 2012

Contents

1	Front	2
2	OBI	3
2.1	OBI	3
2.1.1	Images	3
2.1.2	Bias	3
2.1.3	Parameters	4
2.1.4	Events	4
2.2	Compared Parameters	5
2.3	Aspect	6
2.4	Star Slots	9
2.4.1	Slot 3	9
2.4.2	Slot 4	10
2.4.3	Slot 5	11
2.4.4	Slot 6	12
2.4.5	Slot 7	13
2.5	FID Slots	14
2.5.1	Slot 0	14
2.5.2	Slot 1	15
2.5.3	Slot 2	16
A	Summary	17
A.1	Status	17
A.2	Comments	17

1 Front

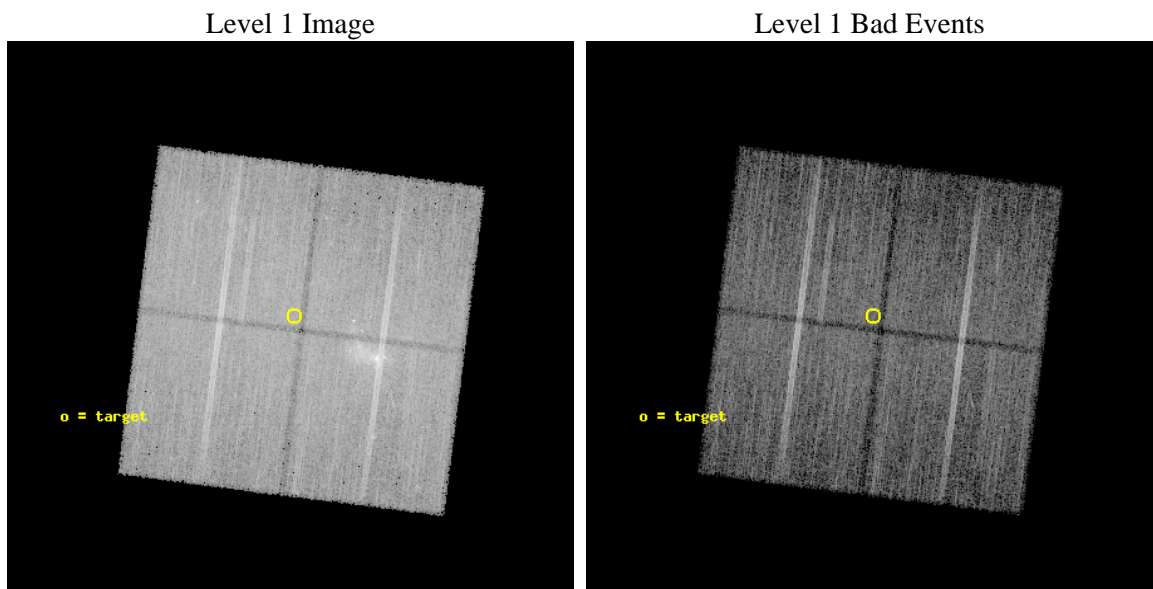
seq_num	900981	Sequence number
obs_id	13508	Observation id
title	Following the echo of a past flare from Sgr A* in the interstellar medium	Proposal title
observer	Dr Regis Terrier	Principal investigator
object	Sgr A complex	Source name
dtcycle	0	
cycle	P	events from which exps? Prim/Second/Both
ra_targ	266.49875	Observer's specified target RA [deg]
dec_targ	-28.971083	Observer's specified target Dec [deg]
ra_nom	266.50257249227	Nominal RA [deg]
dec_nom	-28.978437622365	Nominal Dec [deg]
roll_nom	277.21054676354	Nominal Roll [deg]
revision	2	Processing version of data
ontime	31902.100245357	Sum of GTIs [s]
livetime	31485.275819666	Livetime [s]
ontime0	31898.922855198	Sum of GTIs [s]
ontime1	31898.959215105	Sum of GTIs [s]
ontime2	31902.100245357	Sum of GTIs [s]
ontime3	31902.100245357	Sum of GTIs [s]
l2events	200855	Number of level 2 events



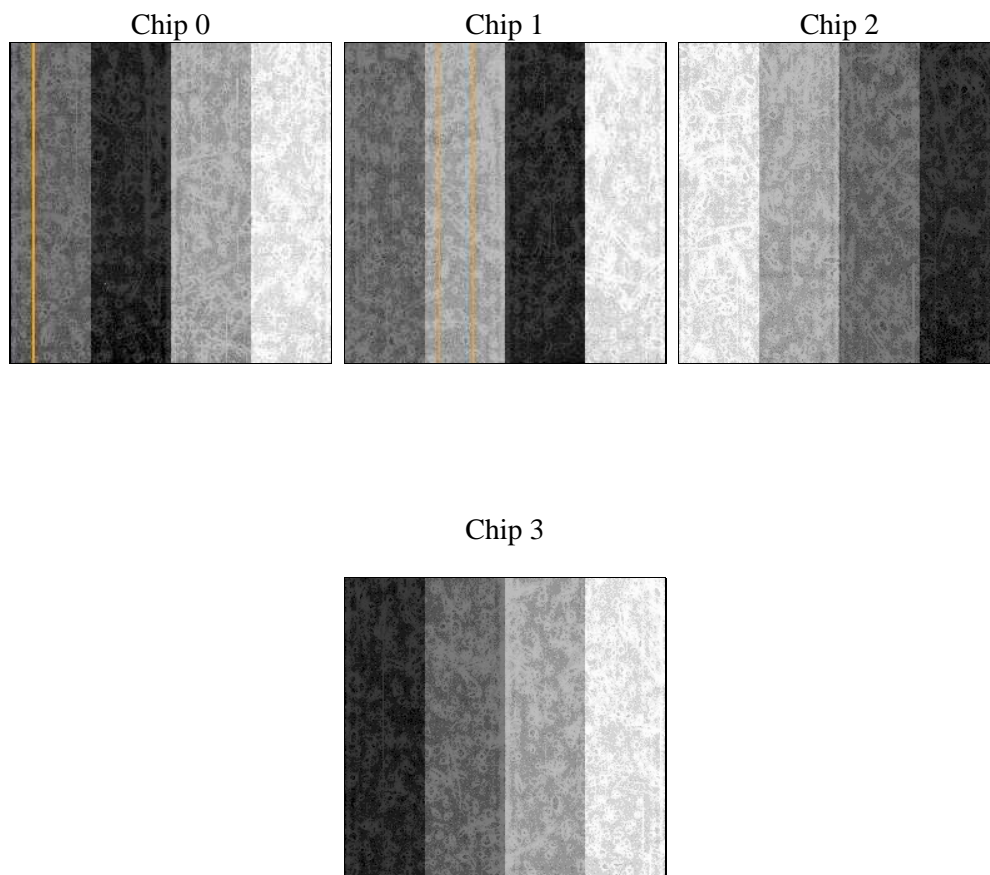
2 OBI

2.1 OBI

2.1.1 Images



2.1.2 Bias



2.1.3 Parameters

obi_num	0	Obi number	sched_exp_time	31834.223000	[s] Scheduled observation exposure time
ascdsver	8.4.3	Processing system revision	ontime	31902.100245357	Sum of GTIs [s]
caldsver	4.4.8	 	ontime0	31898.922855198	Sum of GTIs [s]
date	2012-02-18T05:23:40	Date and time of file creation	ontime1	31898.959215105	Sum of GTIs [s]
revision	2	Processing version of data	ontime2	31902.100245357	Sum of GTIs [s]
			ontime3	31902.100245357	Sum of GTIs [s]
			l1events	862102	Number of level 1 events

2.1.4 Events

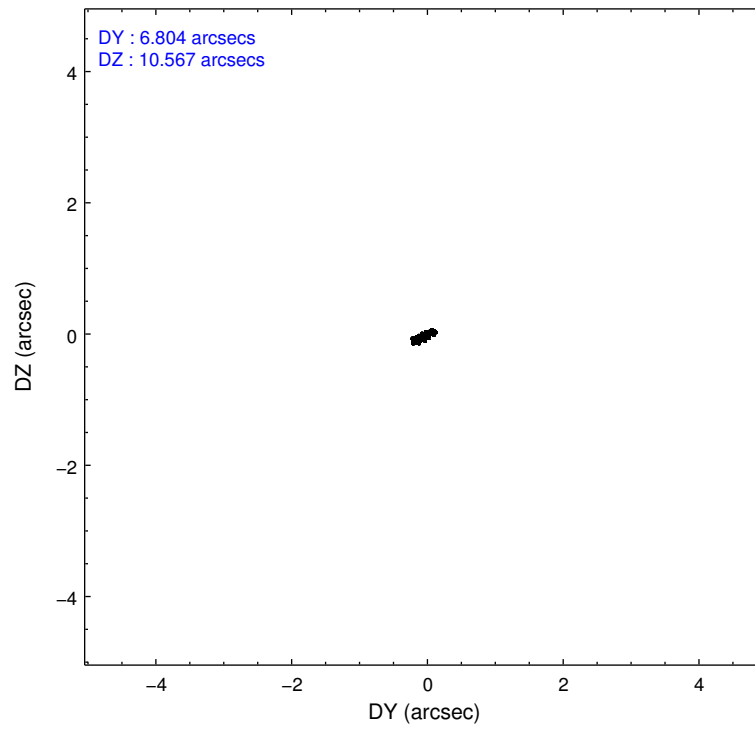
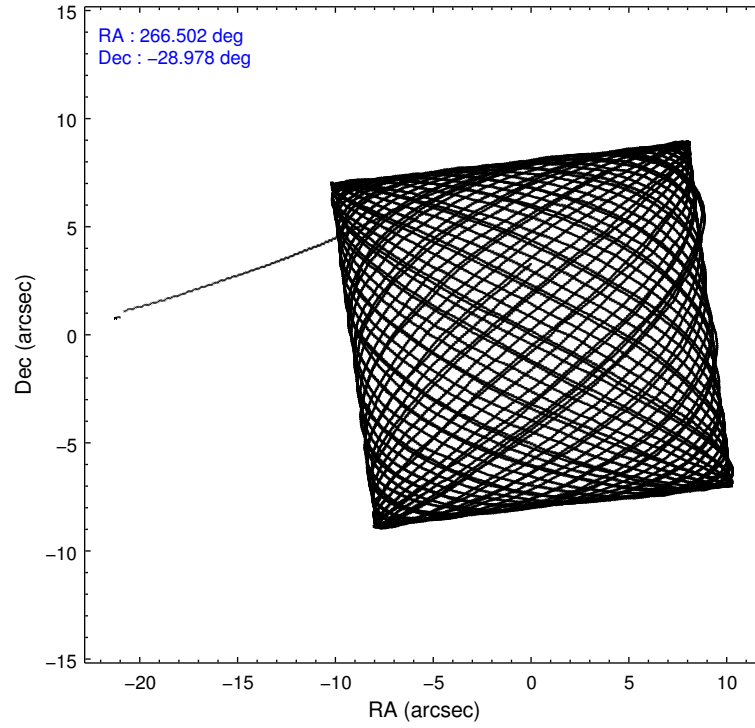
	ccd 0	ccd 1	ccd 2	ccd 3
level 1 events	221540	200769	205865	233928
rejected events	155126	148543	166966	168580
rejected %	70%	73%	81%	72%

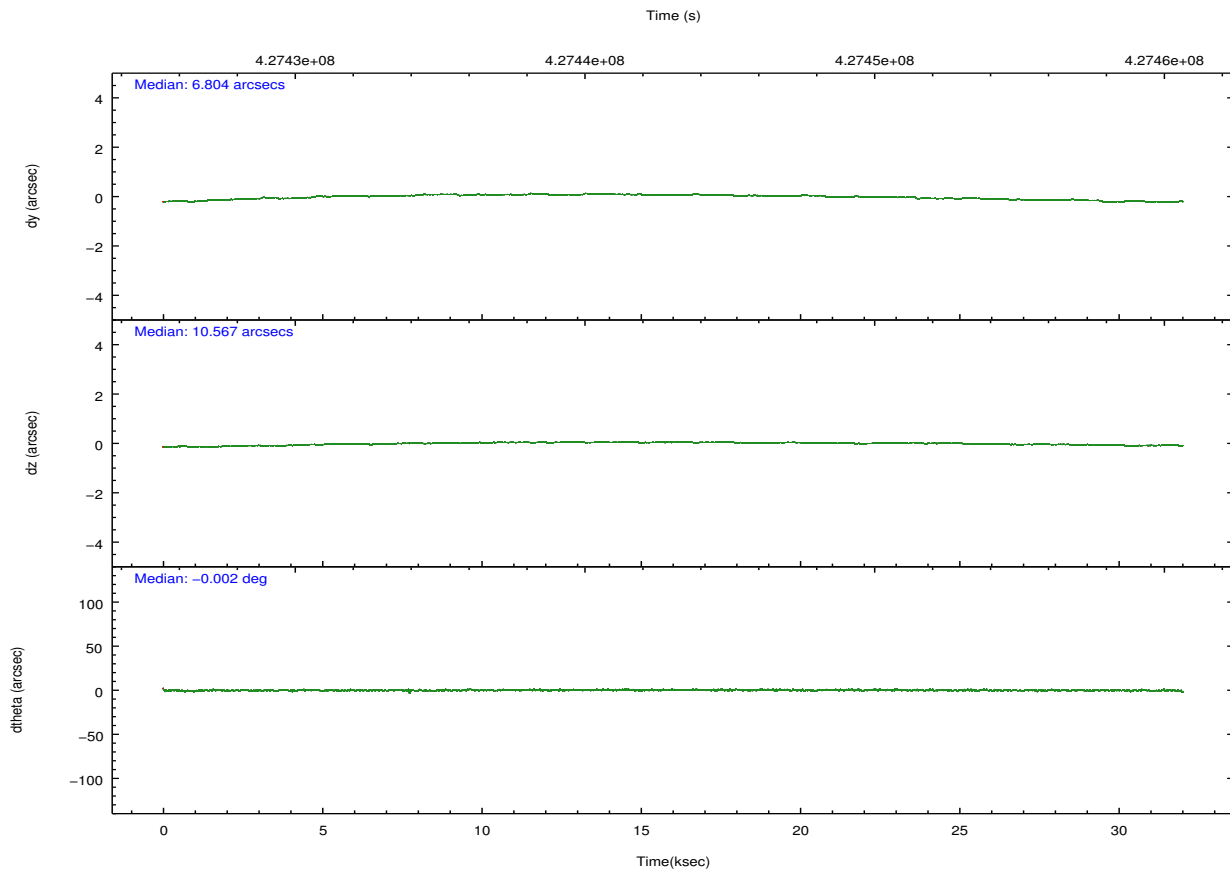
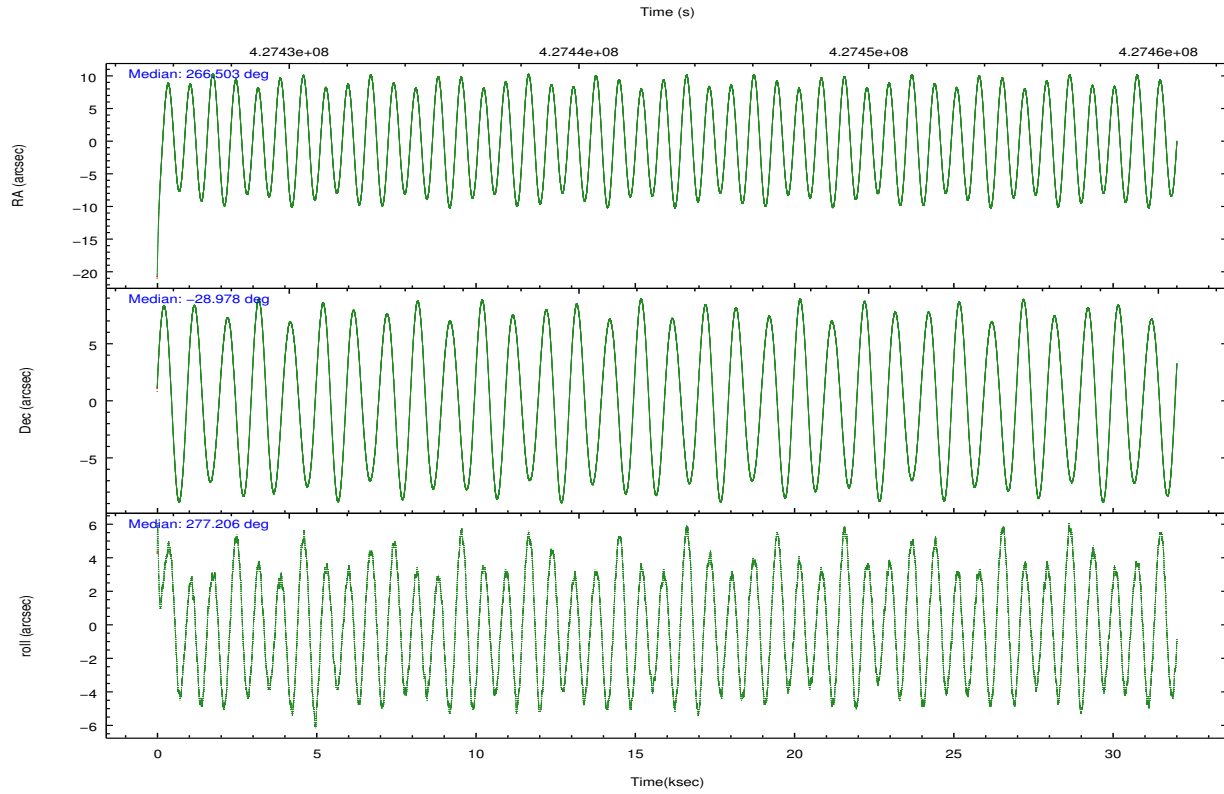
	ccd 0	ccd 1	ccd 2	ccd 3
grade 0 events	39404	28204	21305	40124
	17%	14%	10%	17%
grade 1 events	274	171	202	269
	0%	0%	0%	0%
grade 2 events	11075	9658	7186	10191
	4%	4%	3%	4%
grade 3 events	4390	3781	2827	4213
	1%	1%	1%	1%
grade 4 events	4167	3776	2840	4120
	1%	1%	1%	1%
grade 5 events	7128	7396	6297	7887
	3%	3%	3%	3%
grade 6 events	7383	6812	4744	6704
	3%	3%	2%	2%
grade 7 events	147719	140971	160464	160420
	66%	70%	77%	68%

2.2 Compared Parameters

Parameter	Planned	Actual	Parameter	Planned	Actual
Instrument	ACIS	ACIS	Obspar format version number	7	7
Detector	ACIS-0123	ACIS-0123	Obspar file type	PREDICTED	ACTUAL
Grating	NONE	NONE	Obspar update status	NONE	UPDATED
Data mode	FAINT	FAINT	Number of optional ACIS chips dropped	0	0
Observation mode	POINTING	POINTING	On-chip summing requested	N	N
[deg] Pointing RA	266.483477	266.5025724922698	Subarray requested	NONE	NONE
[deg] Pointing Dec	-28.956606	-28.97843762236511	Alternating exposures requested	N	N
[deg] Pointing Roll	276.992604	277.2105467635448	[s] Primary exposure time	0.000000	3.1
[mm] SIM focus pos	-0.782348	-0.7809083437167272			
[mm] SIM defocus	0	0.001439871863259334			
[mm] SIM translation stage pos	-233.592463	-233.5874344608287			
[mm] SIM translation stage offset	0	-0.005018542100998502			
[s] Observation start time (MET)	427427209.184000	427425857.99263			
Observation start date	2011-07-19T01:45:43	2011-07-19T01:24:17			
[s] Observation end time (MET)	427459043.184000	427459280.68188			
Observation end date	2011-07-19T10:36:17	2011-07-19T10:41:20			
Read mode	TIMED	TIMED			

2.3 Aspect



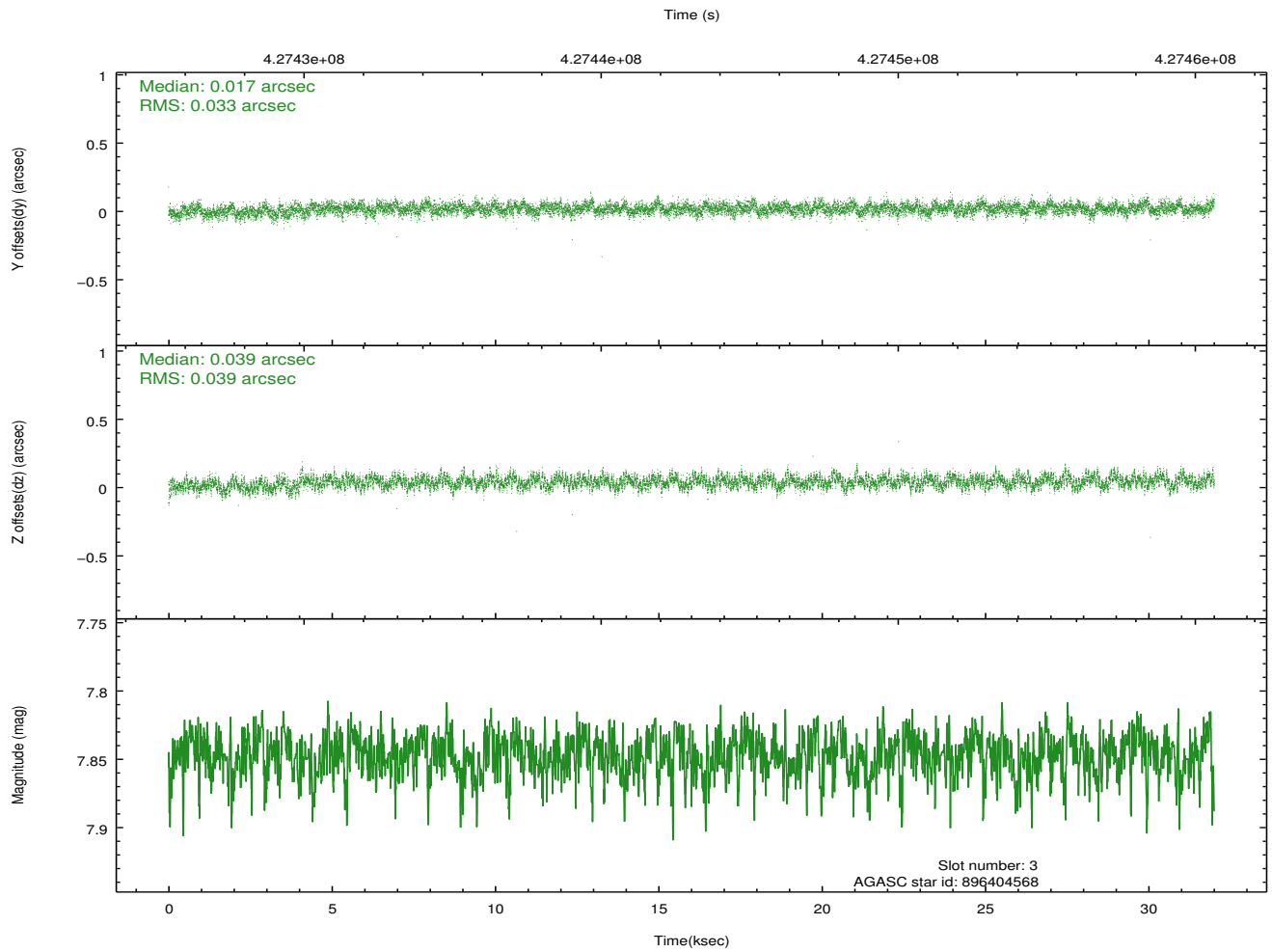
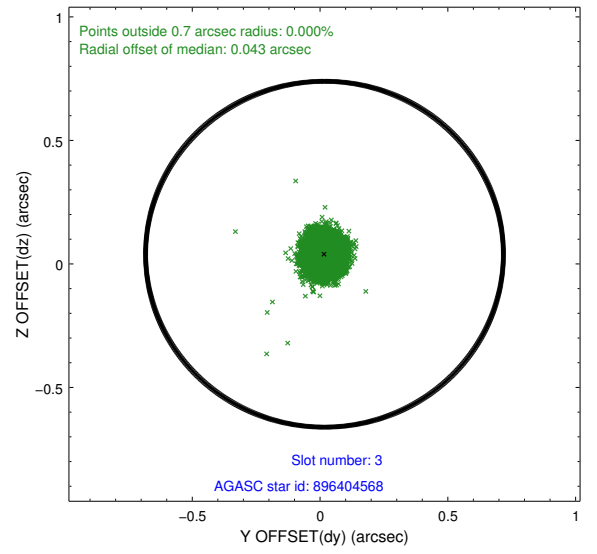
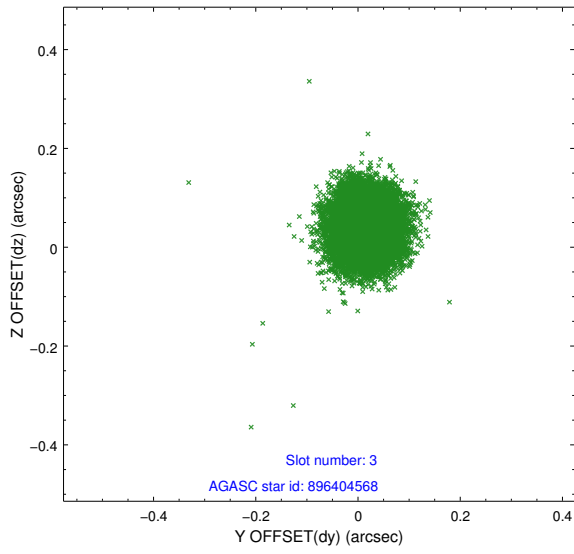


Slot Statistics

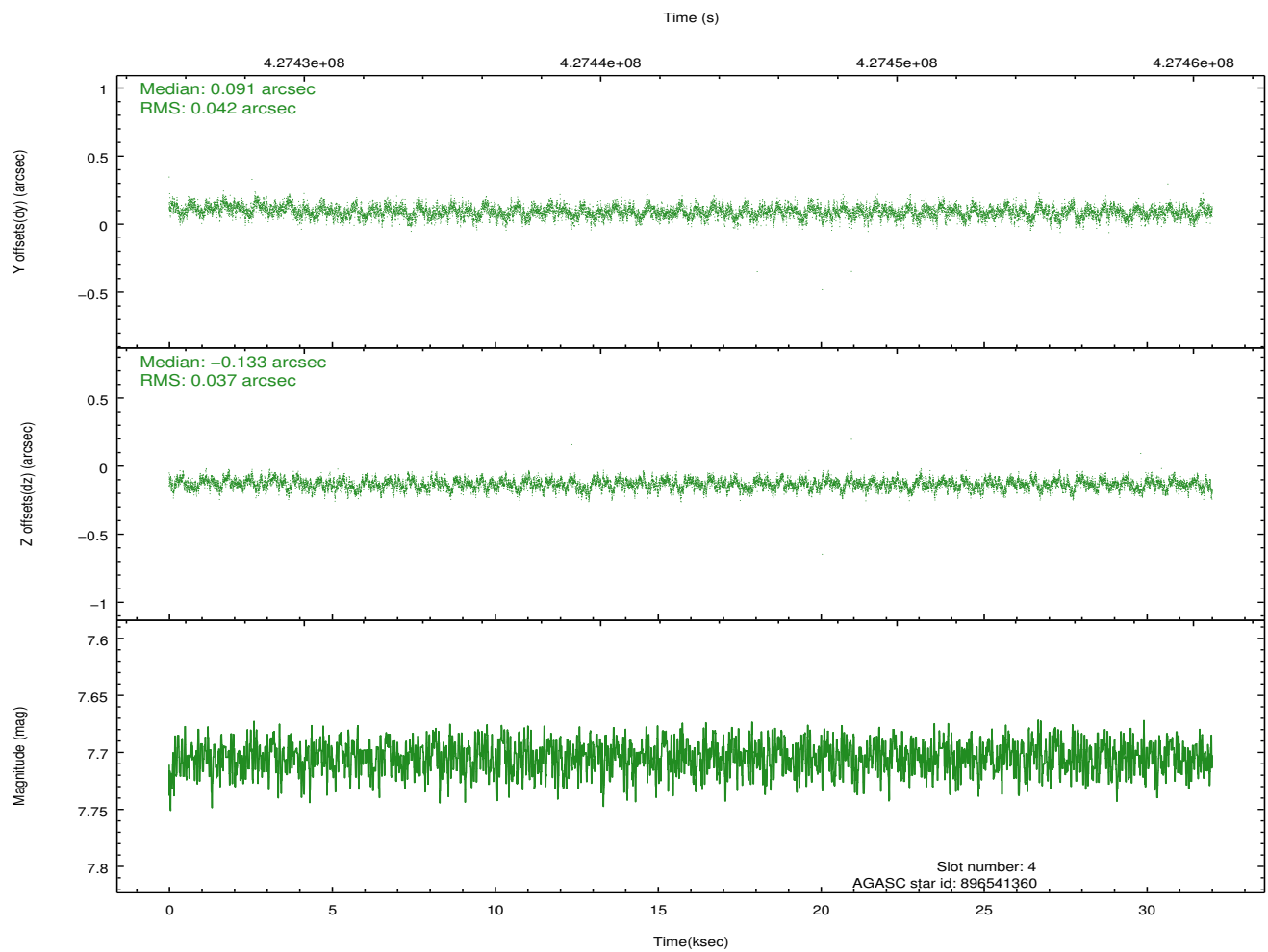
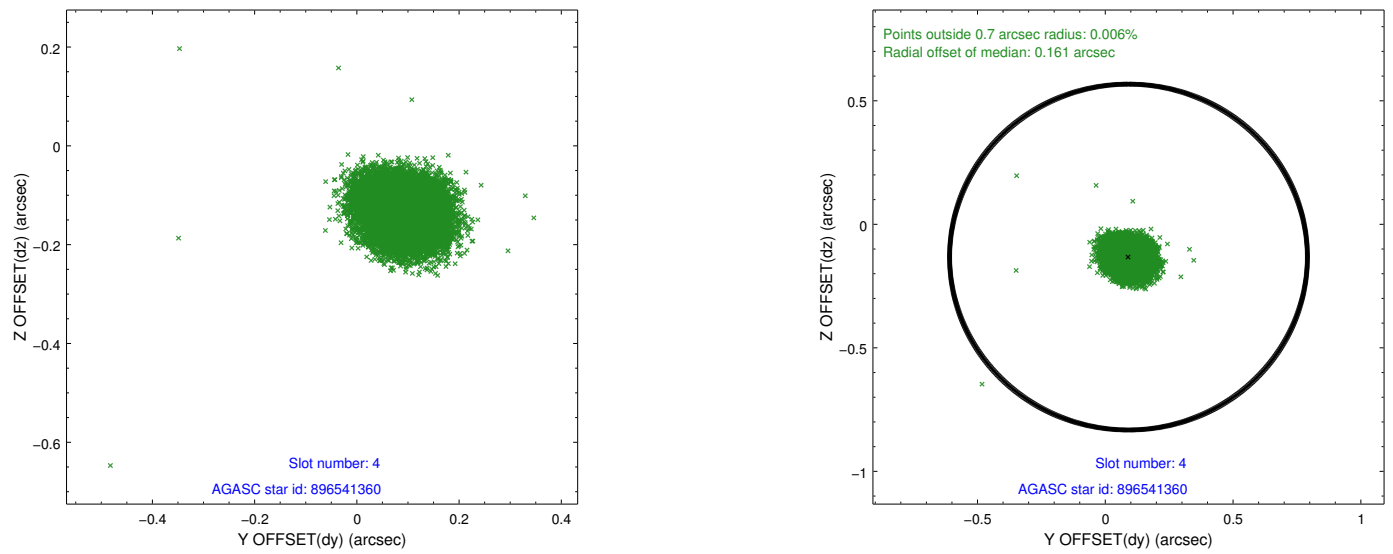
slot	status	id	mag	n_pts	med_dy	med_dz	dr1	dr2	ra	dec	mean_y	mean_z
0	FID	ACIS-I-1	7.16	7808	0.046	-0.037	0.009	0.015	0.000000	0.000000	932.95	-834.08
1	FID	ACIS-I-4	7.08	7809	0.149	0.027	0.009	0.014	0.000000	0.000000	2153.14	1065.75
2	FID	ACIS-I-5	7.14	7808	-0.293	0.080	0.008	0.015	0.000000	0.000000	-1815.30	1063.75
3	GUIDE	896404568	7.85	15609	0.017	0.039	0.054	0.088	265.687293	-28.431080	-2175.95	-2272.56
4	GUIDE	896541360	7.70	15613	0.091	-0.133	0.060	0.096	266.684478	-29.453744	1853.79	407.52
5	GUIDE	896540808	7.44	15614	0.097	0.089	0.052	0.086	265.985401	-29.308604	1071.32	-1706.22
6	GUIDE	896538696	6.85	15617	-0.045	0.178	0.044	0.071	266.298470	-28.325572	-2325.46	-305.35
7	GUIDE	896538208	7.97	15614	-0.159	-0.176	0.057	0.092	267.176969	-28.671626	-745.55	2298.22

2.4 Star Slots

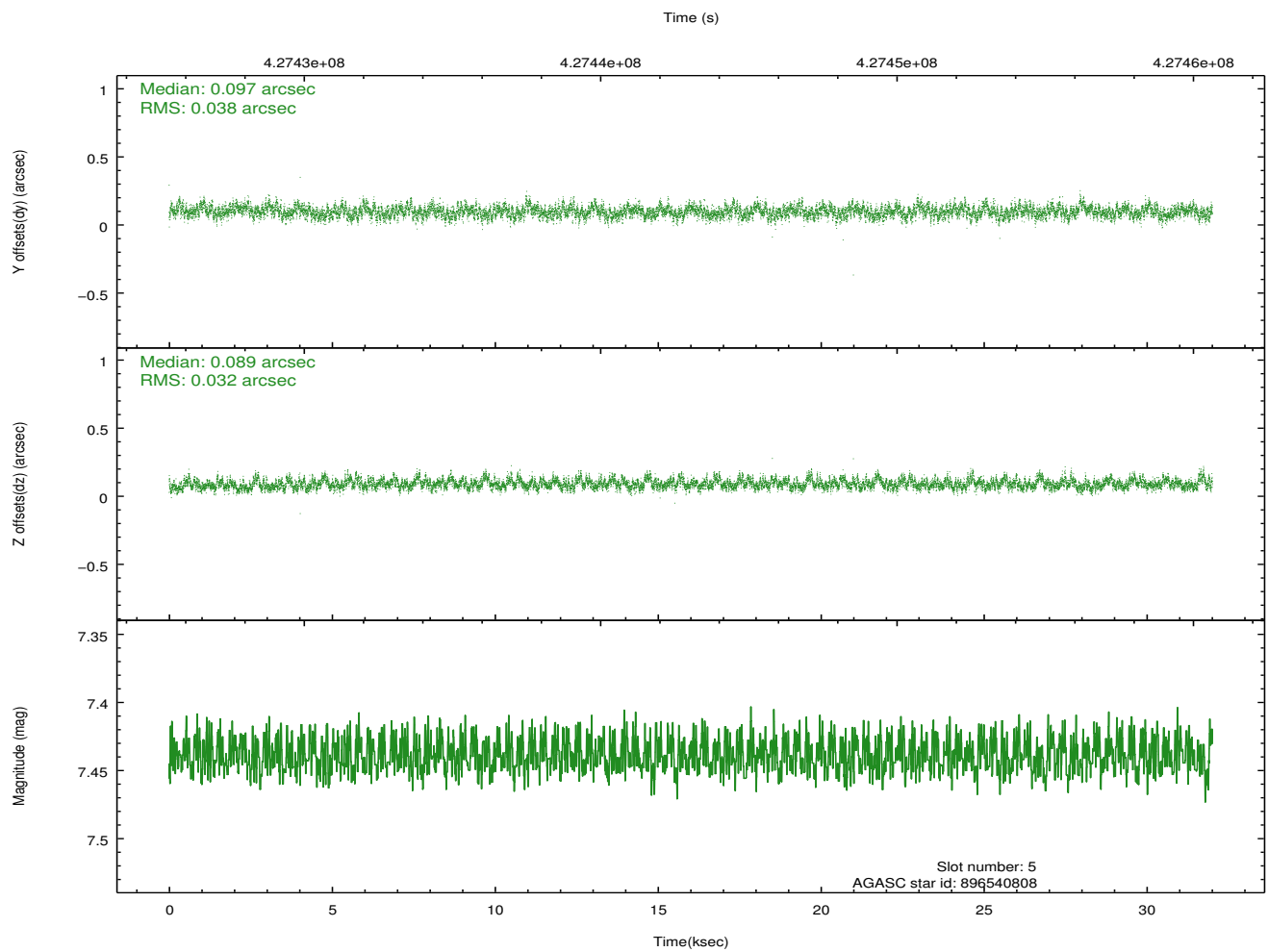
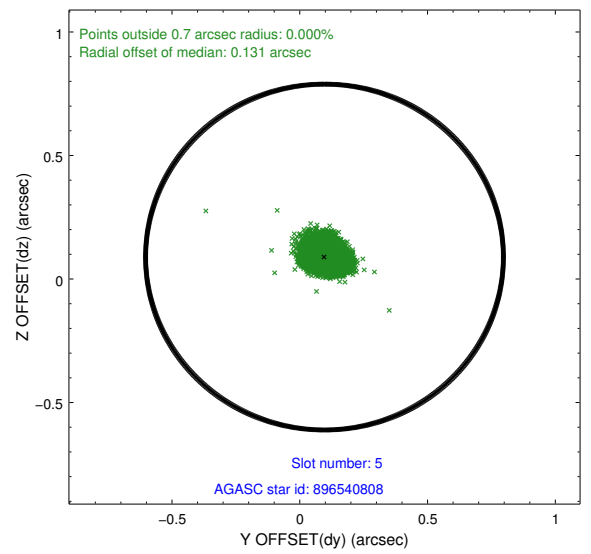
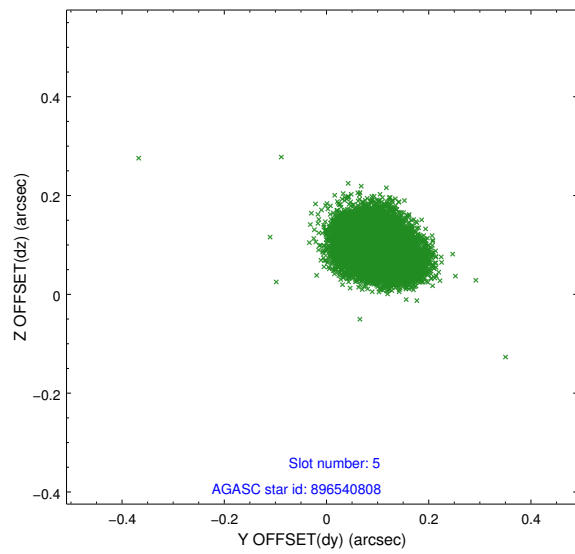
2.4.1 Slot 3



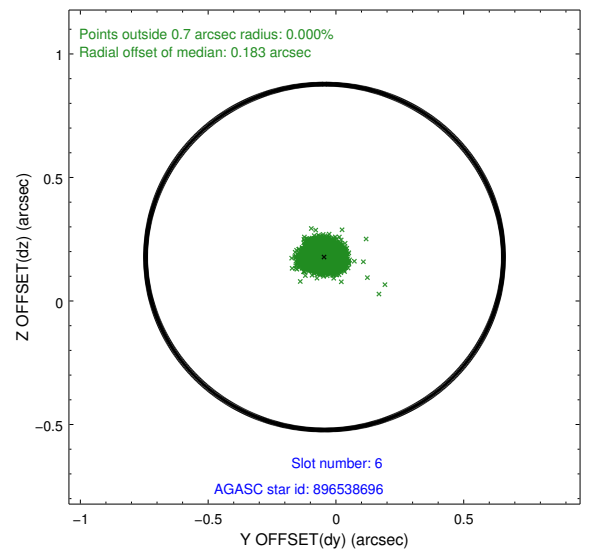
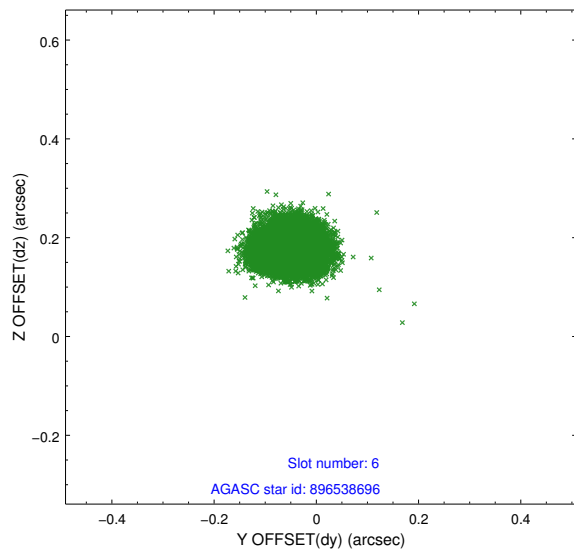
2.4.2 Slot 4



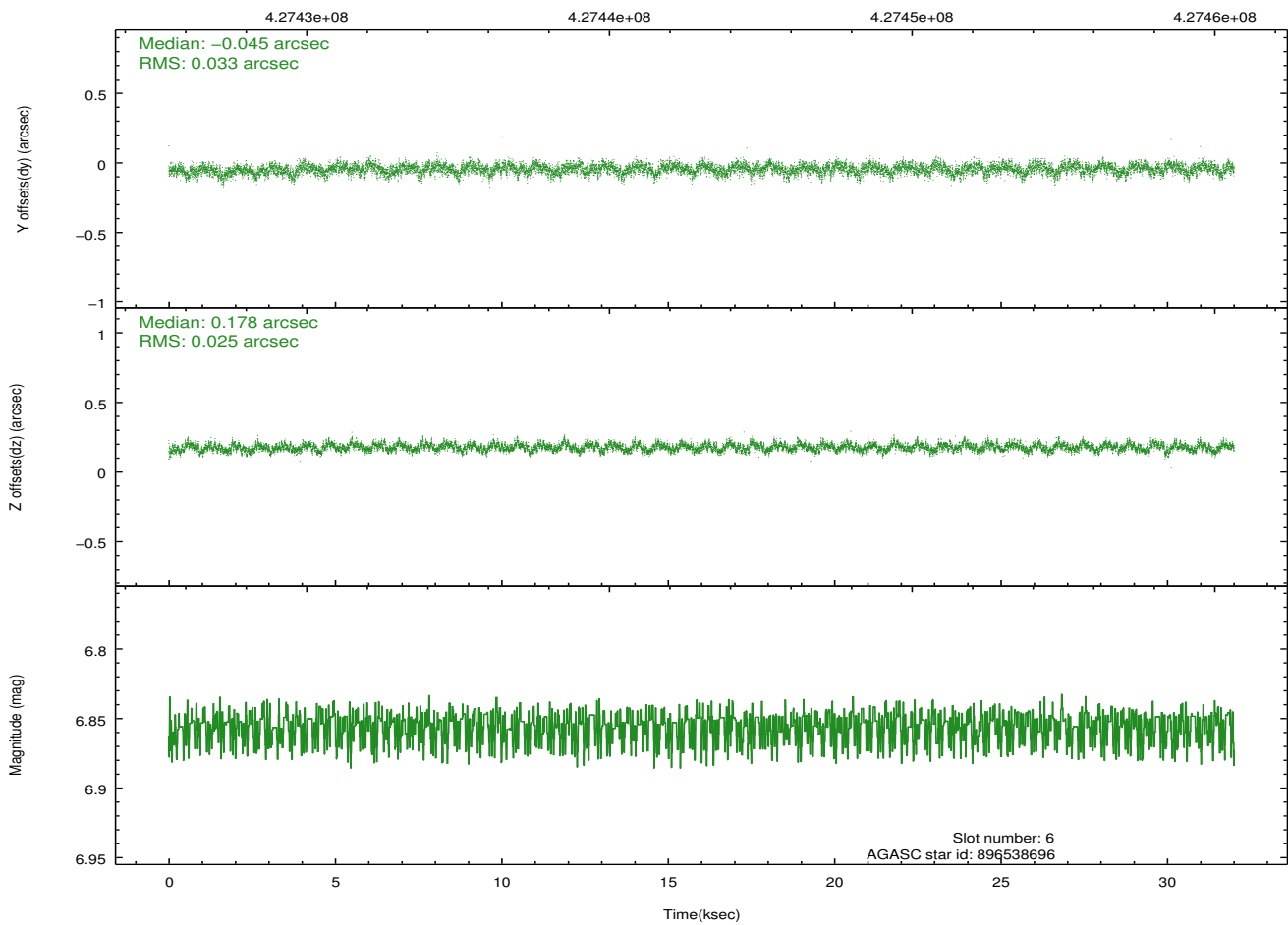
2.4.3 Slot 5



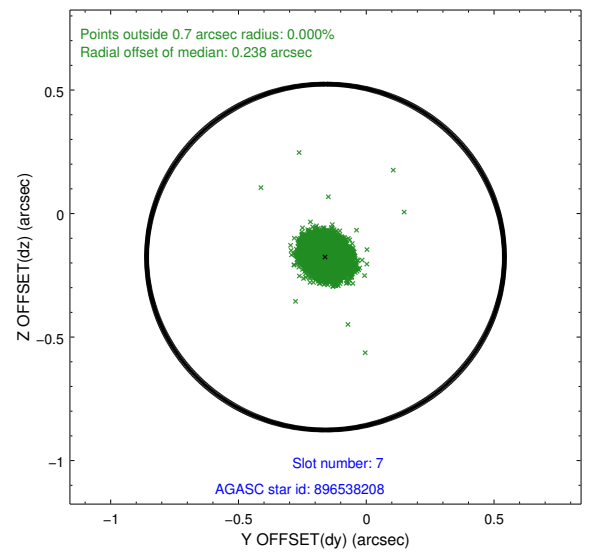
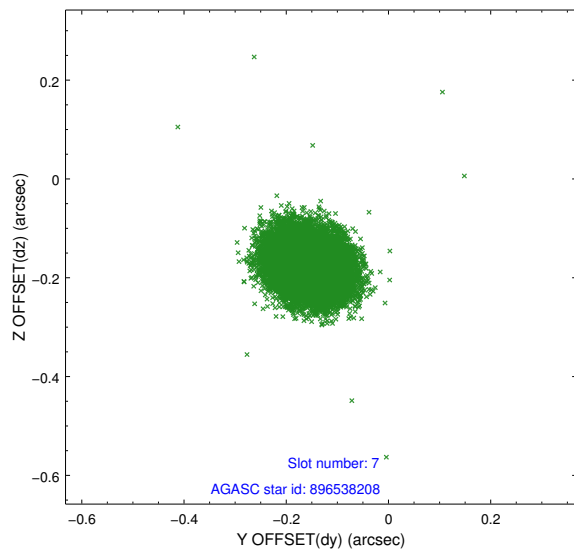
2.4.4 Slot 6



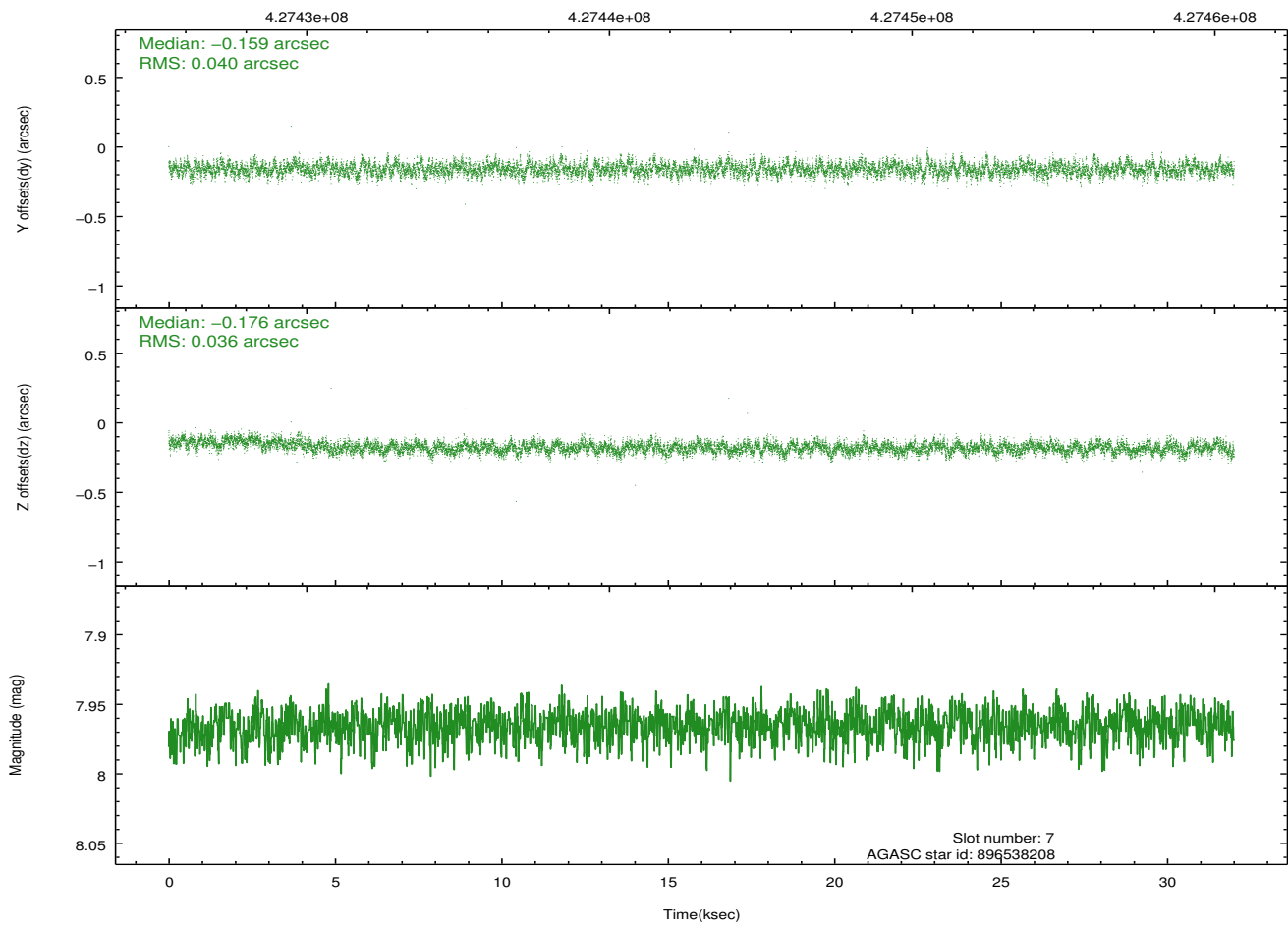
Time (s)



2.4.5 Slot 7

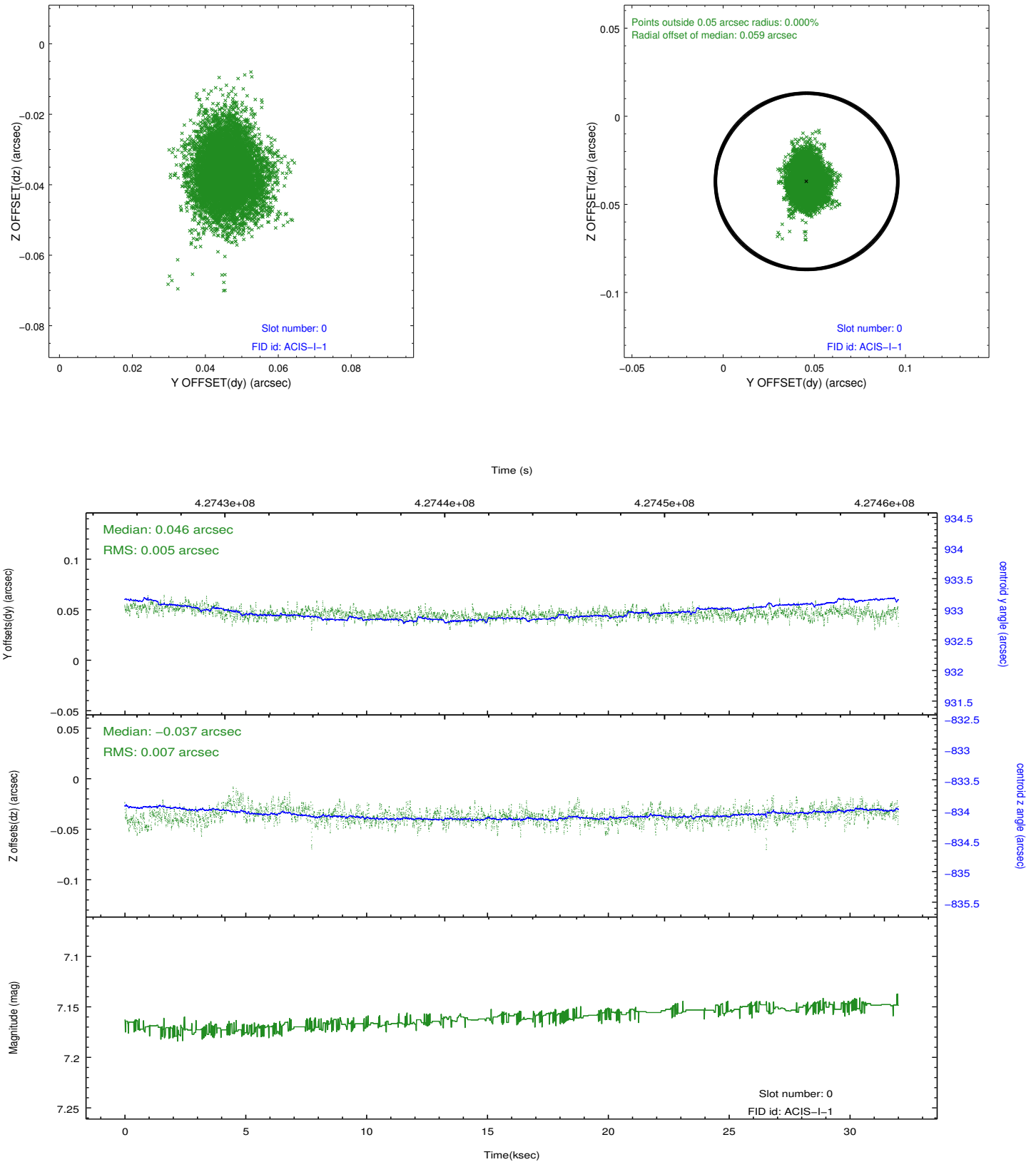


Time (s)

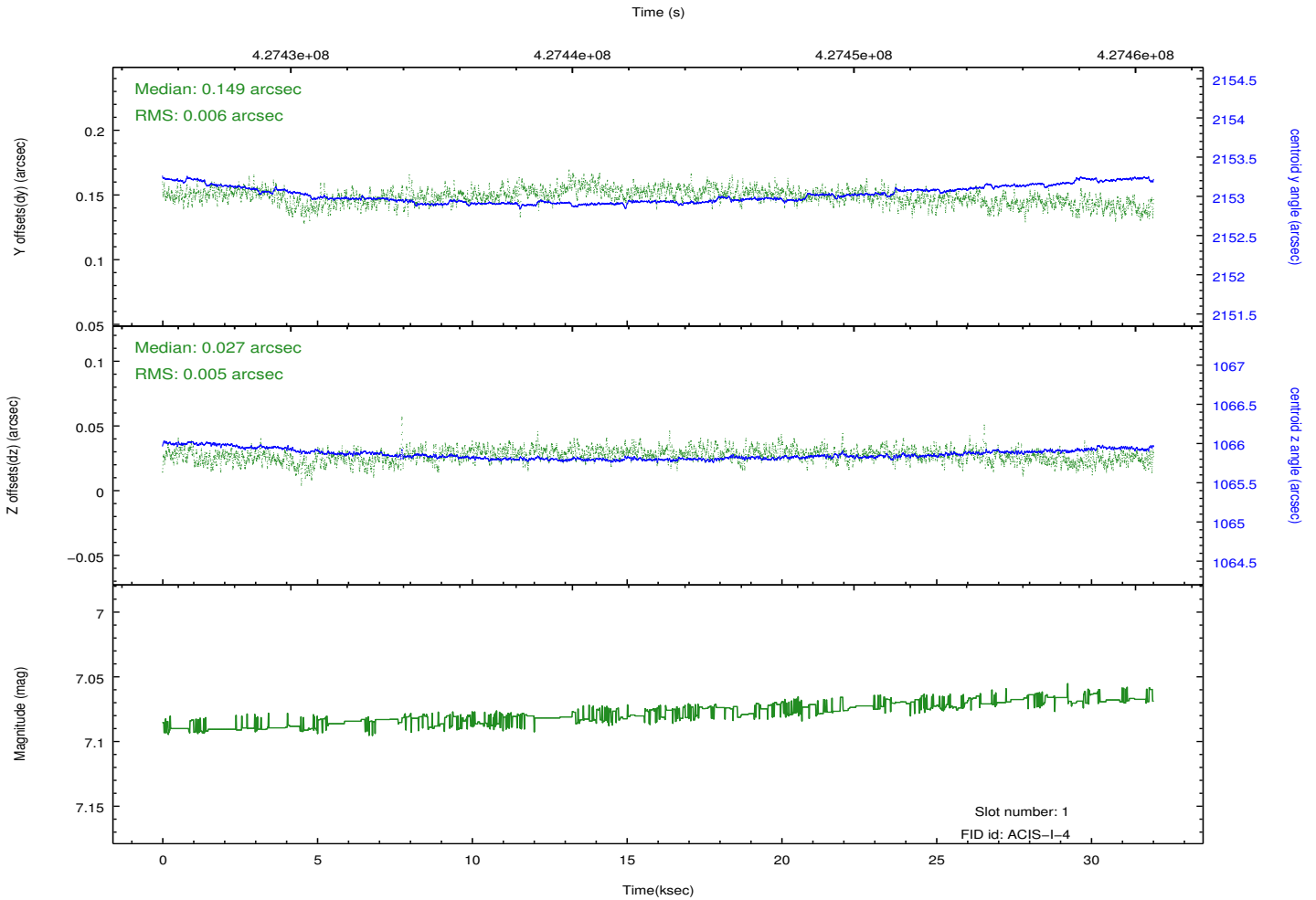
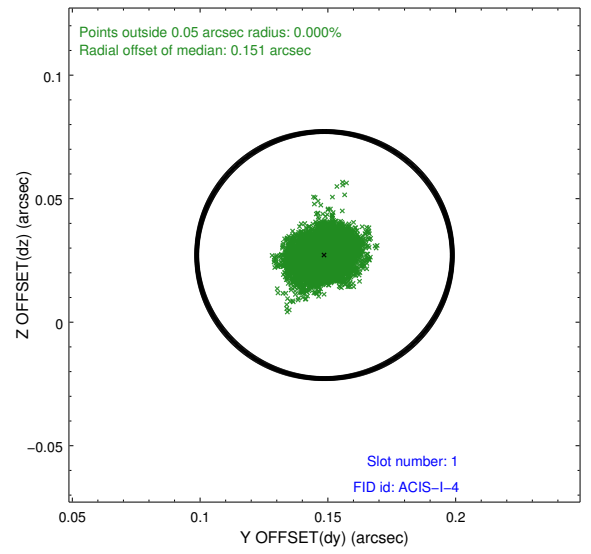
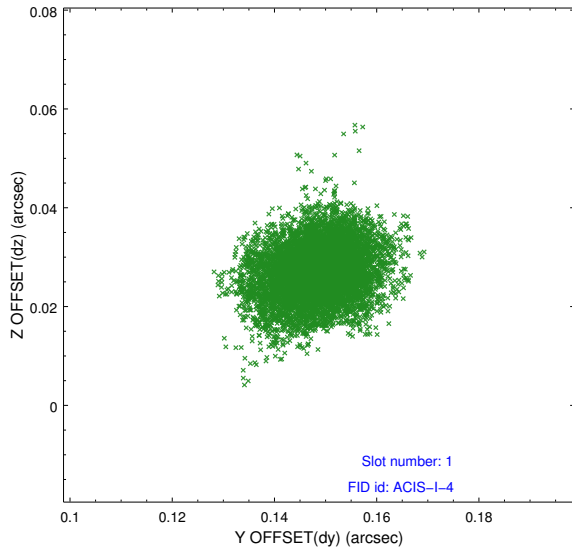


2.5 FID Slots

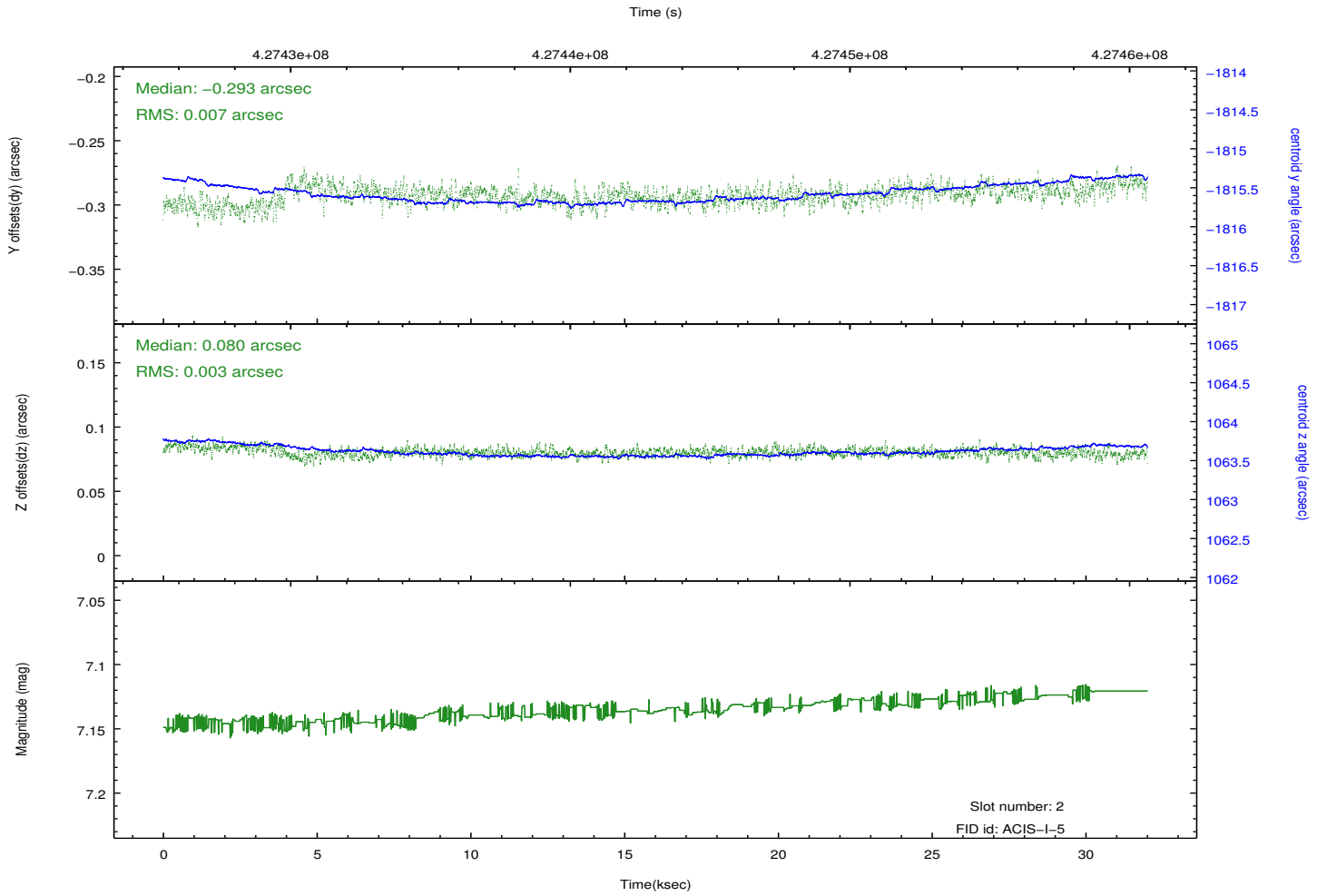
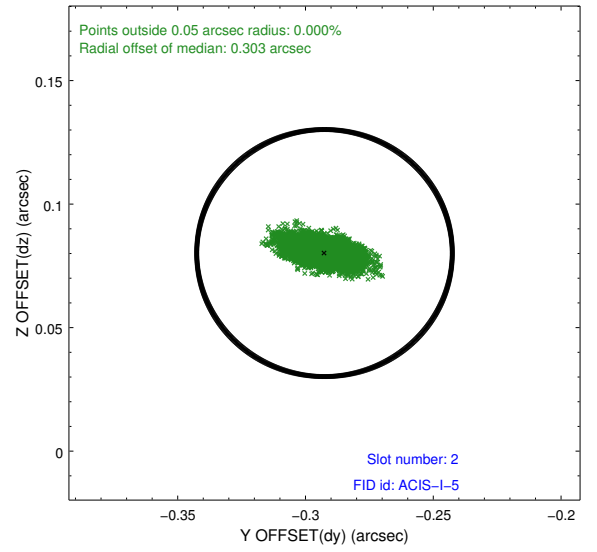
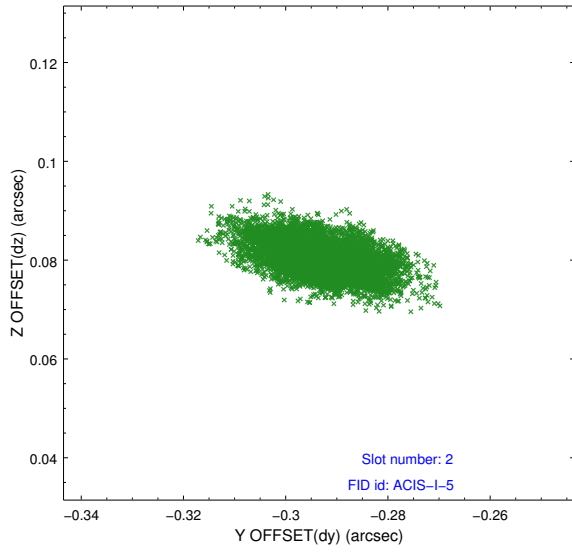
2.5.1 Slot 0



2.5.2 Slot 1



2.5.3 Slot 2



A Summary

A.1 Status

V&V Scientist	Jen Lauer
V&V Date (YYYY-MM-DD)	2012.02.21
V&V Edition	1
V&V Disposition and Status	OK
V&V Charge Time	31.902100245357

A.2 Comments

Roll preference met.