

V&V Reference Report

L2 ASCDS Version : 8.4.3

Observation 13648 - L2 Version 2
Chandra X-Ray Center

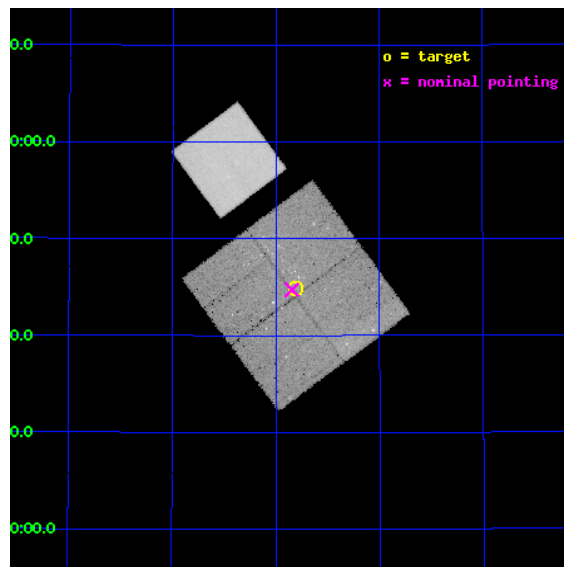
L2 Processing Date : Feb 29 2012

Contents

1	Front	2
2	OBI	3
2.1	OBI	3
2.1.1	Images	3
2.1.2	Bias	3
2.1.3	Parameters	4
2.1.4	Events	4
2.2	Compared Parameters	5
2.3	Aspect	6
2.4	Star Slots	9
2.4.1	Slot 3	9
2.4.2	Slot 4	10
2.4.3	Slot 5	11
2.4.4	Slot 6	12
2.4.5	Slot 7	13
2.5	FID Slots	14
2.5.1	Slot 0	14
2.5.2	Slot 1	15
2.5.3	Slot 2	16
A	Summary	17
A.1	Status	17
A.2	Comments	17

1 Front

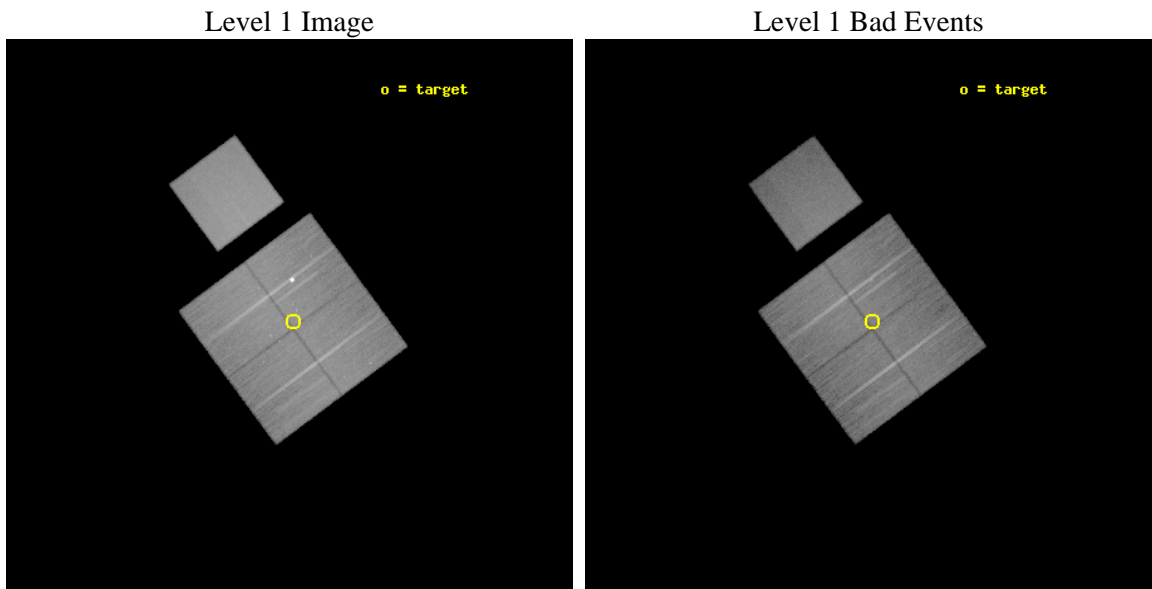
seq_num	200802	Sequence number
obs_id	13648	Observation id
title	Star formation in the NGC7000/IC5070 complex	Proposal title
observer	Dr. Francesco Damiani	Principal investigator
object	NGC7000 Pointing 2	Source name
dtycle	0	
cycle	P	events from which exps? Prim/Second/Both
ra_targ	314.200833	Observer's specified target RA [deg]
dec_targ	43.748167	Observer's specified target Dec [deg]
ra_nom	314.21138179379	Nominal RA [deg]
dec_nom	43.745511964967	Nominal Dec [deg]
roll_nom	323.49662560353	Nominal Roll [deg]
revision	2	Processing version of data
ontime	45177.930940449	Sum of GTIs [s]
liveltime	44587.648013203	Livetime [s]
ontime0	45190.371721625	Sum of GTIs [s]
ontime1	45190.412761629	Sum of GTIs [s]
ontime2	45190.453801632	Sum of GTIs [s]
ontime3	45177.930940449	Sum of GTIs [s]
ontime7	45190.535881639	Sum of GTIs [s]
l2events	275605	Number of level 2 events



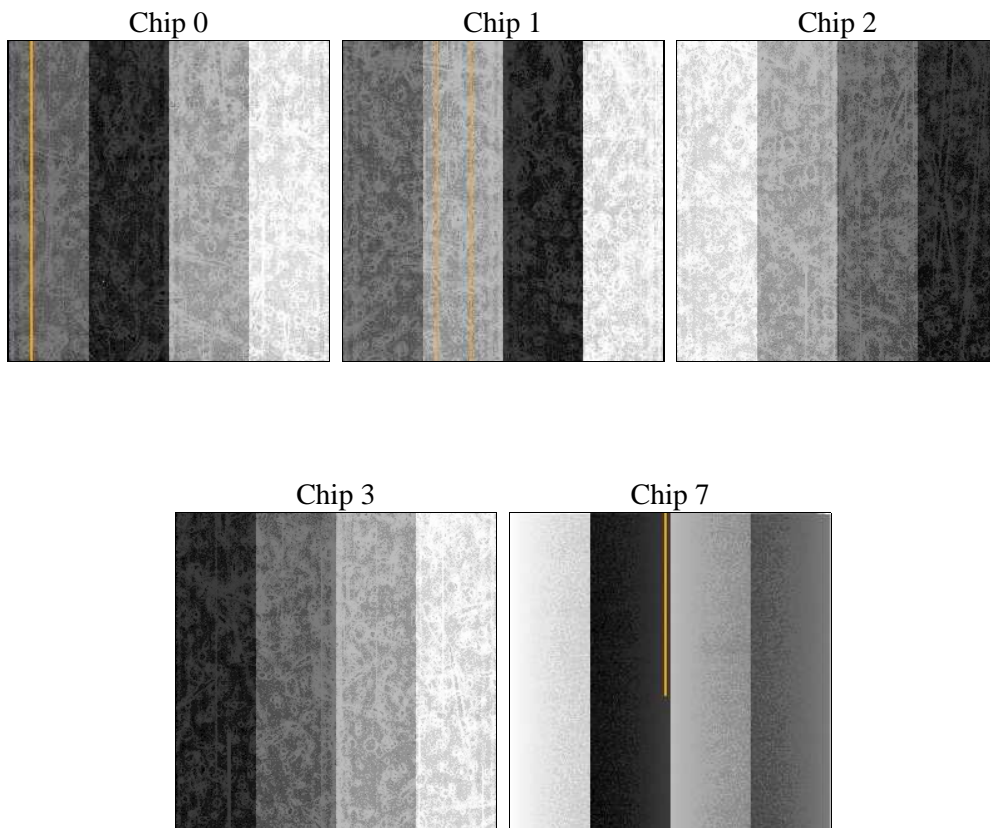
2 OBI

2.1 OBI

2.1.1 Images



2.1.2 Bias



2.1.3 Parameters

obi_num	0	Obi number	sched_exp_time	45150.000000	[s] Scheduled observation exposure time
ascdsver	8.4.3	Processing system revision	ontime	45177.930940449	Sum of GTIs [s]
caldsver	4.4.8	 	ontime0	45190.371721625	Sum of GTIs [s]
date	2012-02-29T13:28:03	Date and time of file creation	ontime1	45190.412761629	Sum of GTIs [s]
revision	2	Processing version of data	ontime2	45190.453801632	Sum of GTIs [s]
			ontime3	45177.930940449	Sum of GTIs [s]
			ontime7	45190.535881639	Sum of GTIs [s]
			l1events	1506422	Number of level 1 events

2.1.4 Events

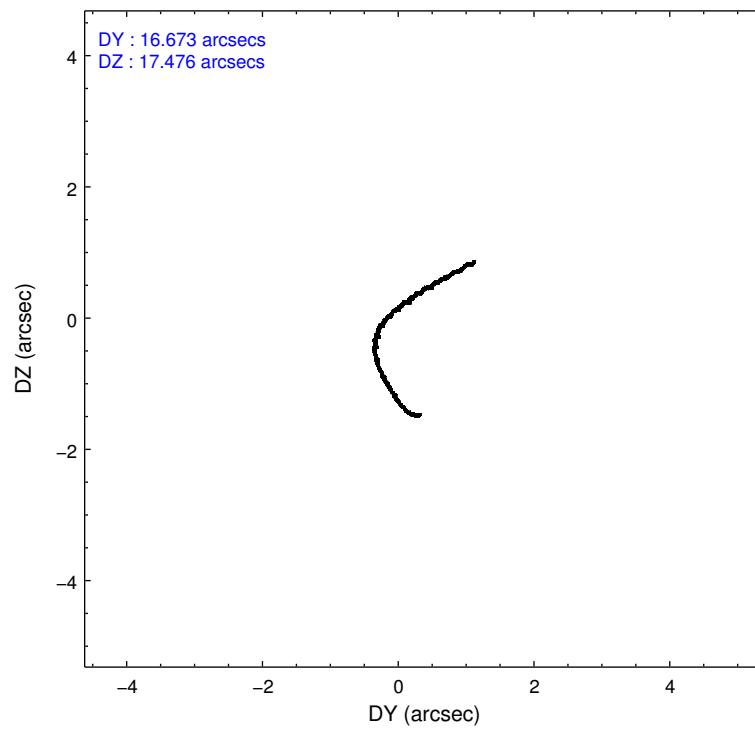
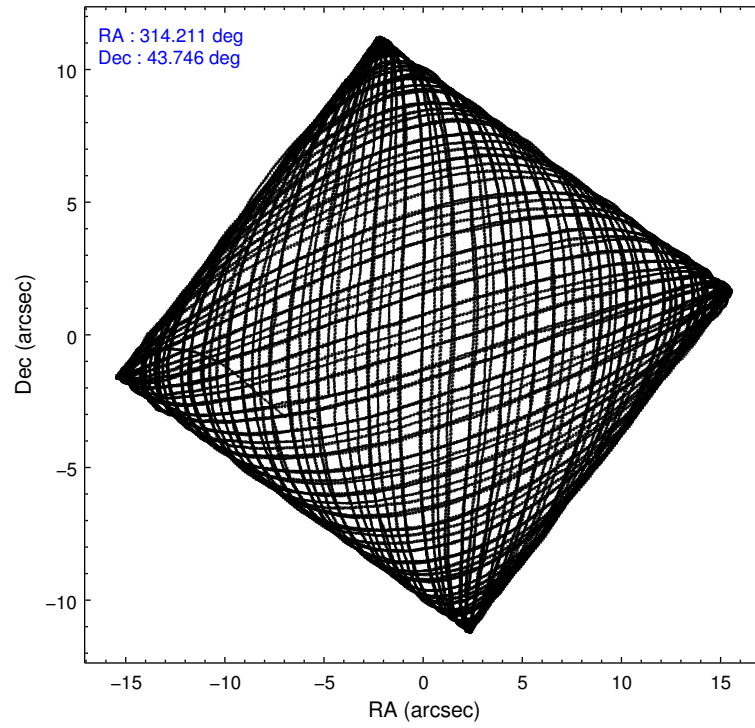
	ccd 0	ccd 1	ccd 2	ccd 3	ccd 7
level 1 events	263101	271024	293507	308423	370367
rejected events	229390	233020	259774	251161	206382
rejected %	87%	85%	88%	81%	55%

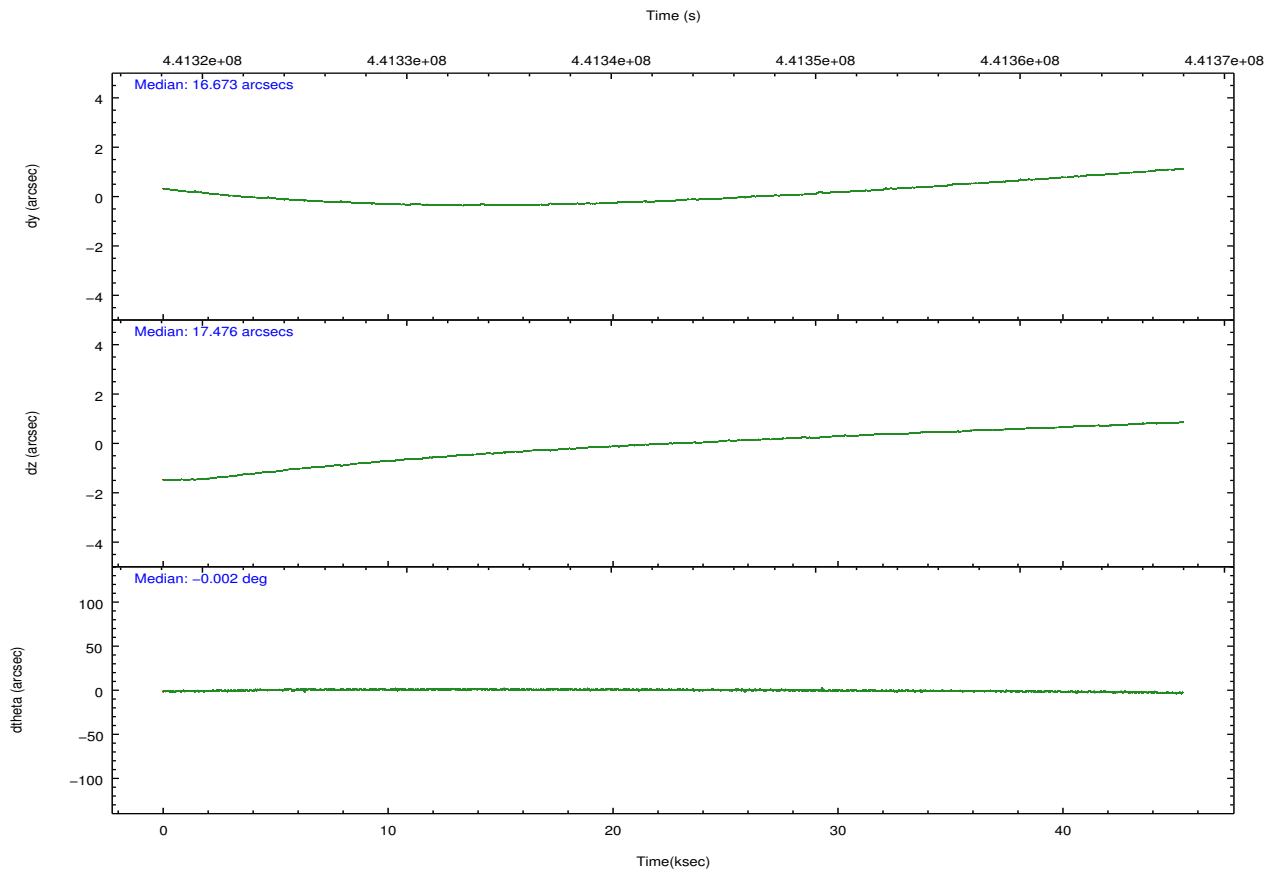
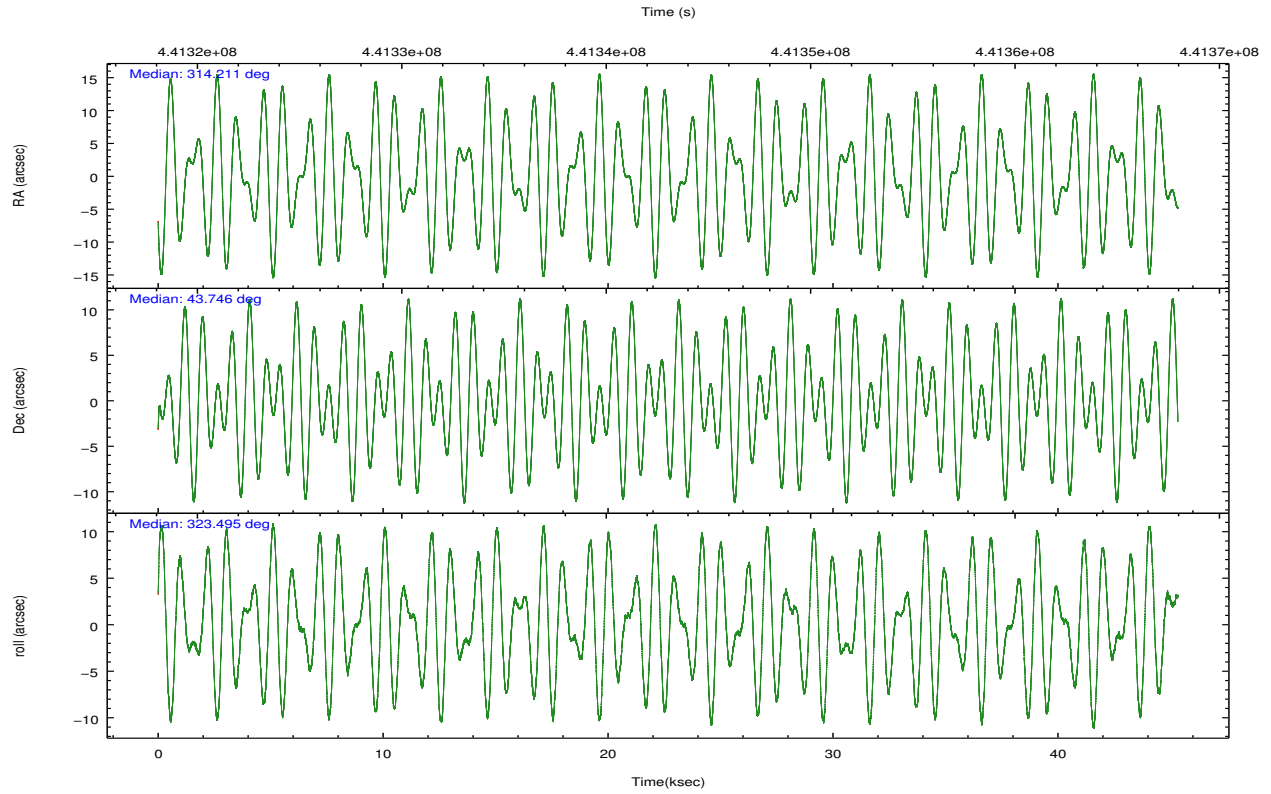
	ccd 0	ccd 1	ccd 2	ccd 3	ccd 7
grade 0 events	11771	13983	12461	26304	14824
	4%	5%	4%	8%	4%
grade 1 events	150	148	202	269	479
	0%	0%	0%	0%	0%
grade 2 events	8265	8818	8136	17333	33551
	3%	3%	2%	5%	9%
grade 3 events	3447	3644	3360	3557	14243
	1%	1%	1%	1%	3%
grade 4 events	3402	3833	3403	3523	14353
	1%	1%	1%	1%	3%
grade 5 events	12969	13427	11961	14283	38521
	4%	4%	4%	4%	10%
grade 6 events	6834	7737	6379	6554	87042
	2%	2%	2%	2%	23%
grade 7 events	216263	219434	247605	236600	167354
	82%	80%	84%	76%	45%

2.2 Compared Parameters

Parameter	Planned	Actual	Parameter	Planned	Actual
Instrument	ACIS	ACIS	Obspar format version number	7	7
Detector	ACIS-01237	ACIS-01237	Obspar file type	PREDICTED	ACTUAL
Grating	NONE	NONE	Obspar update status	NONE	UPDATED
Data mode	FAINT	FAINT	CCD I0 on	Y	Y
Observation mode	POINTING	POINTING	CCD I1 on	Y	Y
[deg] Pointing RA	314.173558	314.2113817937903	CCD I2 on	Y	Y
[deg] Pointing Dec	43.748506	43.74551196496697	CCD I3 on	Y	Y
[deg] Pointing Roll	323.314090	323.4966256035284	CCD S0 on	N	N
[mm] SIM focus pos	-0.782348	-0.7809083437167272	CCD S1 on	N	N
[mm] SIM defocus	0	0.001439871863259334	CCD S2 on	N	N
[mm] SIM translation stage pos	-233.592463	-233.5874344608287	CCD S3 on	O1	Y
[mm] SIM translation stage offset	0	-0.005018542100998502	CCD S4 on	N	N
[s] Observation start time (MET)	441320535.184000	441319430.62238	CCD S5 on	N	N
Observation start date	2011-12-26T21:01:09	2011-12-26T20:43:50	Number of optional ACIS chips dropped	0	0
[s] Observation end time (MET)	441365685.184000	441366354.61236	On-chip summing requested	N	N
Observation end date	2011-12-27T09:33:39	2011-12-27T09:45:54	Subarray requested	NONE	NONE
Read mode	TIMED	TIMED	Alternating exposures requested	N	N
			[s] Primary exposure time	0.000000	3.1

2.3 Aspect



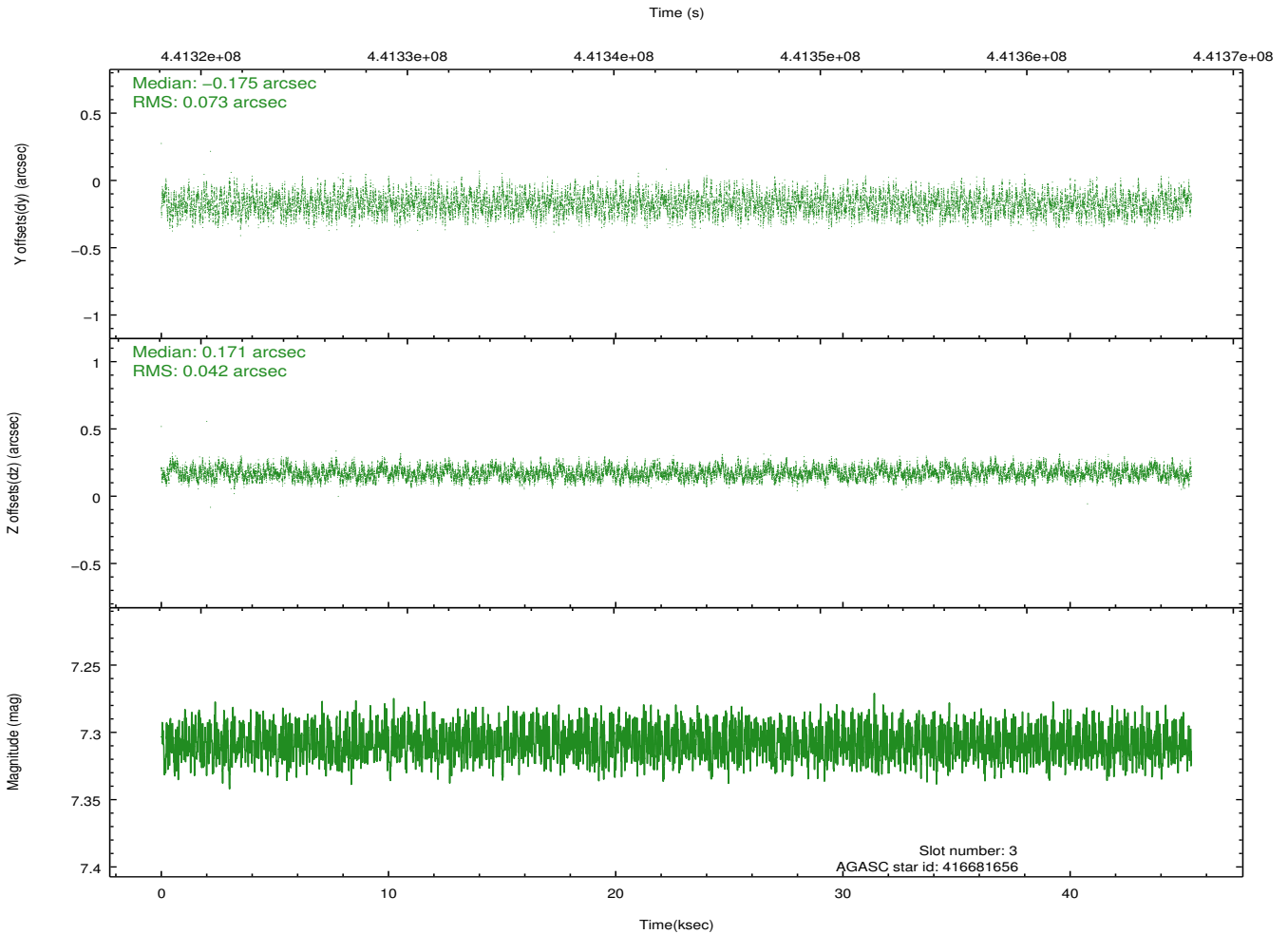
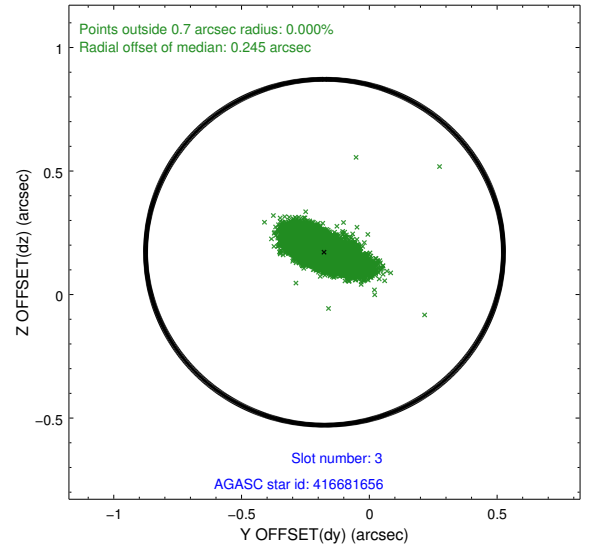
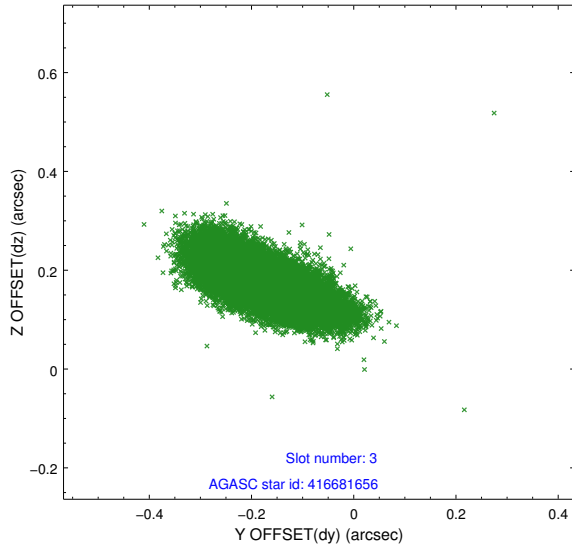


Slot Statistics

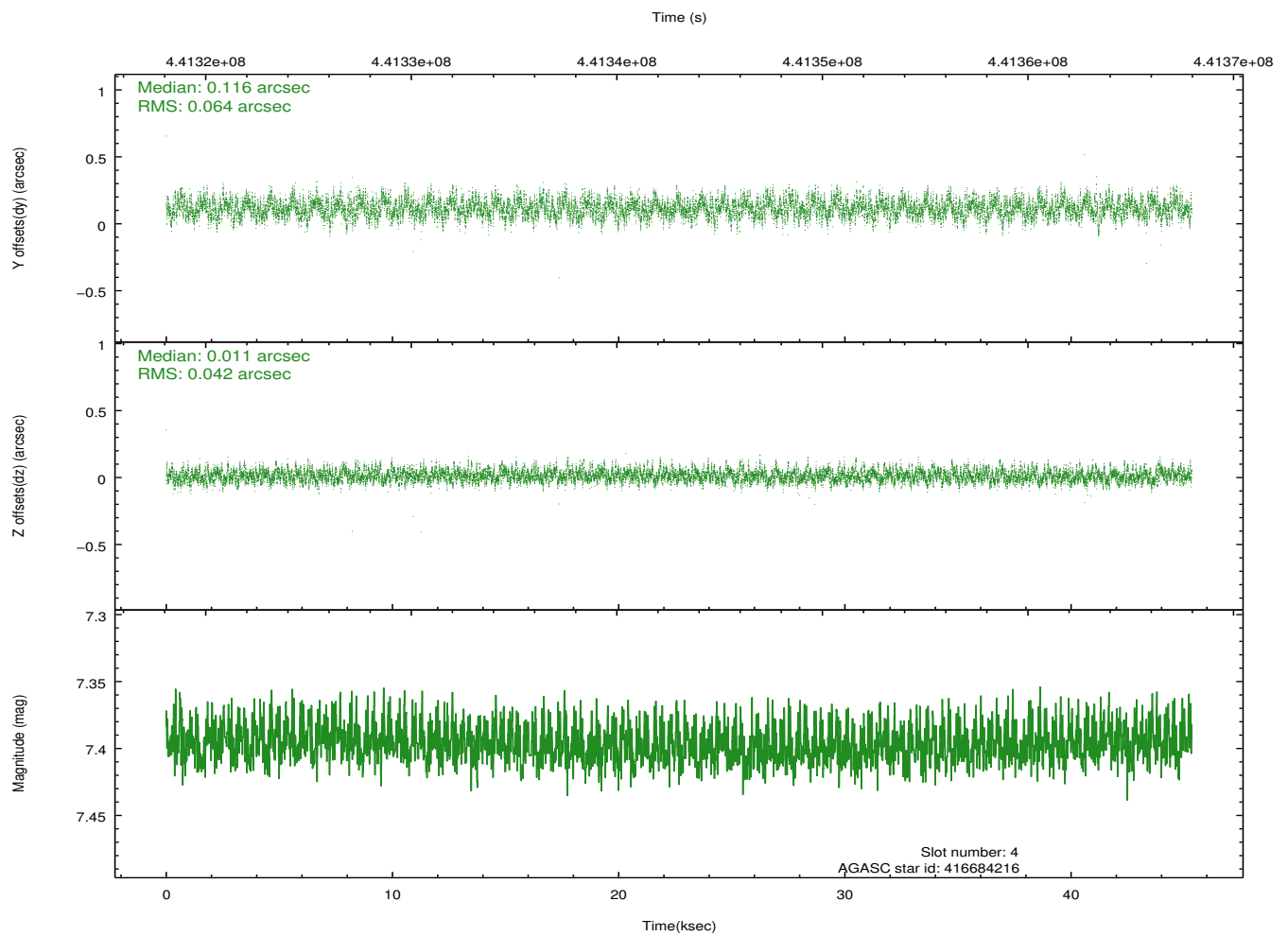
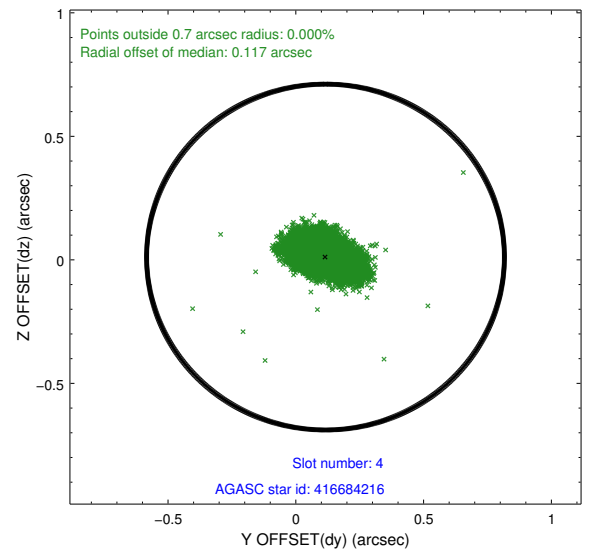
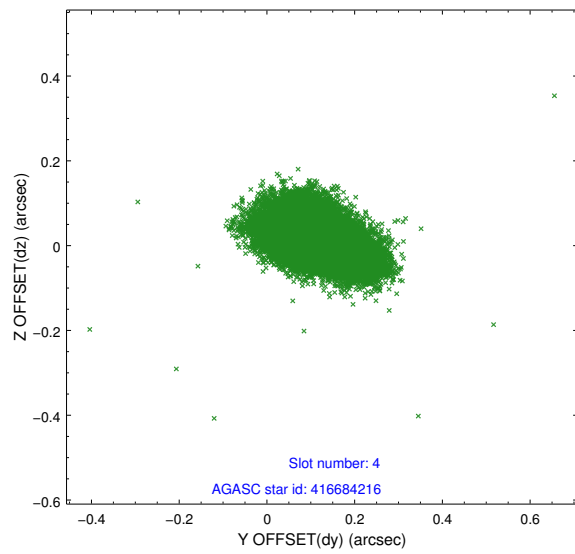
slot	status	id	mag	n_pts	med_dy	med_dz	dr1	dr2	ra	dec	mean_y	mean_z
0	FID	ACIS-I-1	7.05	11057	0.058	-0.008	0.017	0.039	0.000000	0.000000	922.67	-841.03
1	FID	ACIS-I-5	7.06	11056	-0.233	0.058	0.012	0.020	0.000000	0.000000	-1825.72	1056.54
2	FID	ACIS-I-6	7.06	11058	0.083	0.019	0.021	0.049	0.000000	0.000000	388.26	1701.00
3	GUIDE	416681656	7.31	22114	-0.175	0.171	0.089	0.151	313.995868	44.373930	-1712.15	1532.98
4	GUIDE	416684216	7.40	22110	0.116	0.011	0.080	0.134	314.048312	43.424312	434.79	-1131.20
5	GUIDE	416688608	6.87	22114	-0.147	-0.122	0.079	0.136	314.101872	43.900650	-476.19	327.82
6	GUIDE	416154200	7.14	22112	0.042	-0.109	0.103	0.170	314.200085	42.895663	1891.26	-2416.57
7	GUIDE	416818224	8.17	22108	0.145	0.047	0.067	0.110	315.309666	43.721786	2416.09	1705.13

2.4 Star Slots

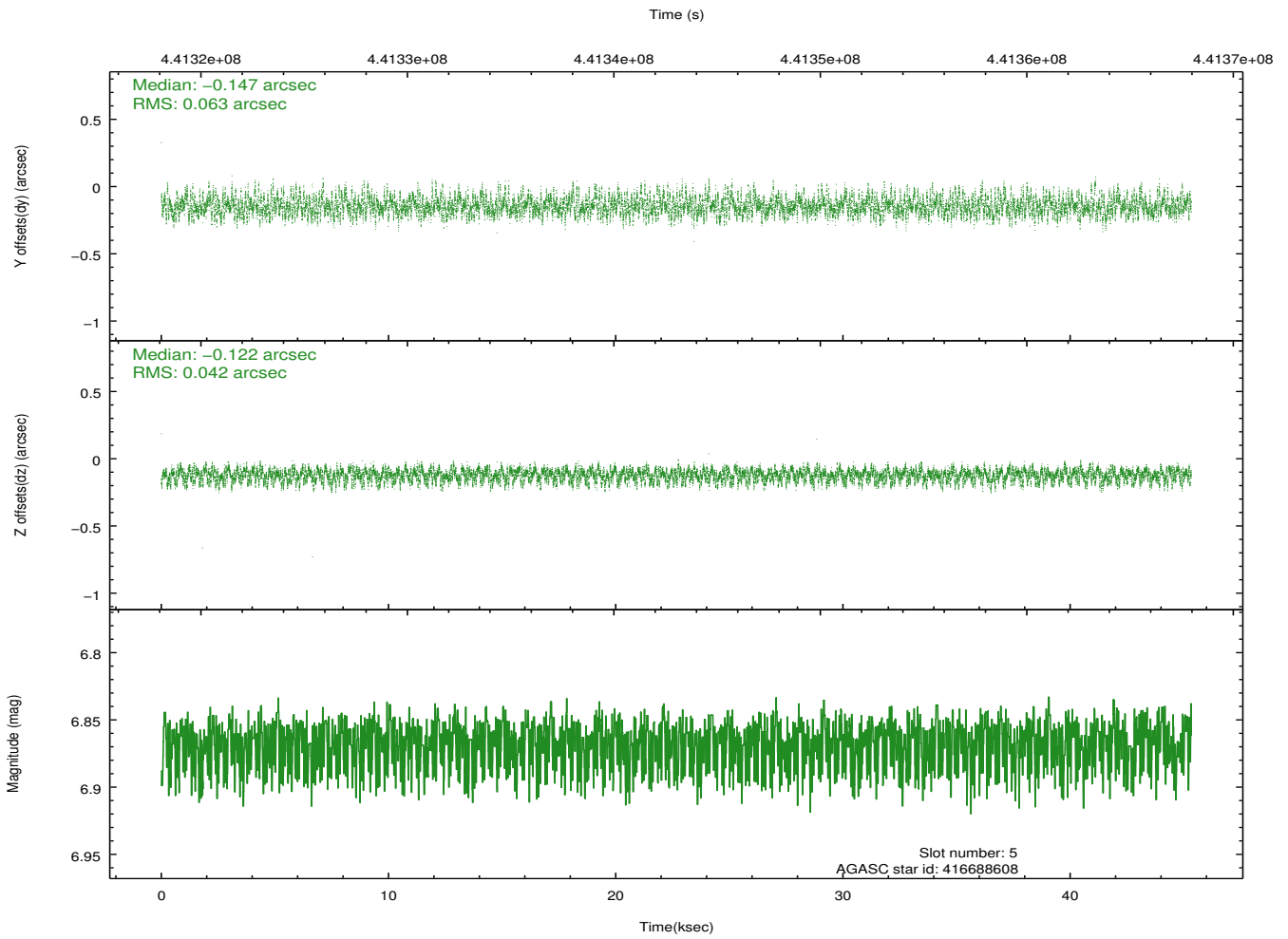
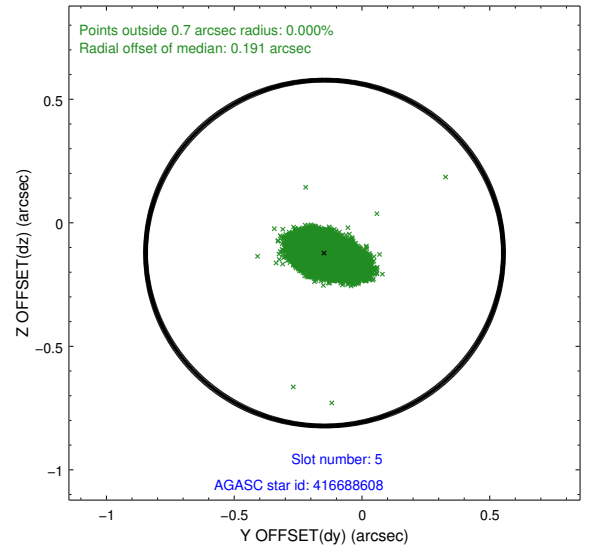
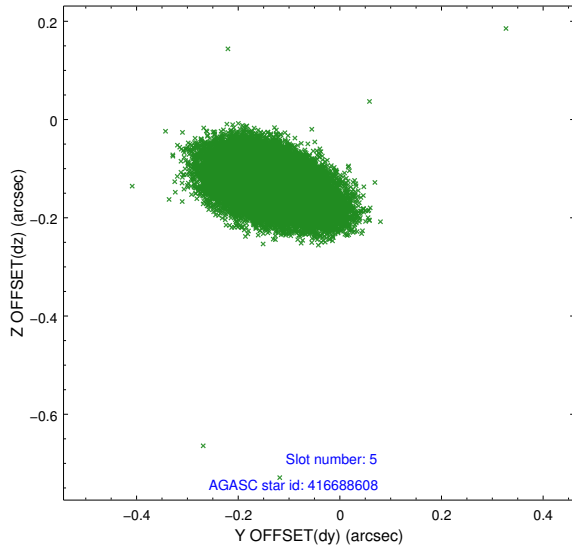
2.4.1 Slot 3



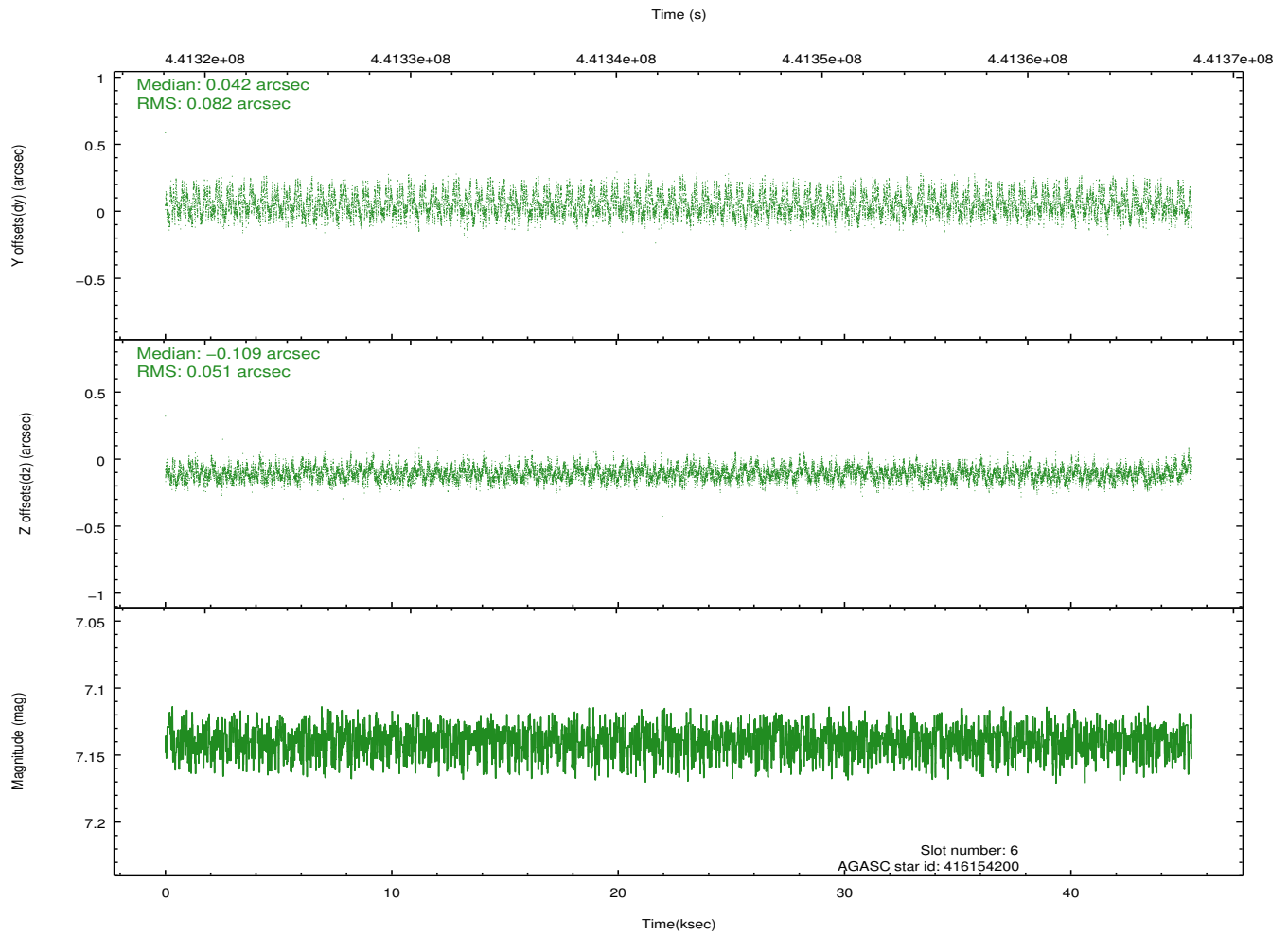
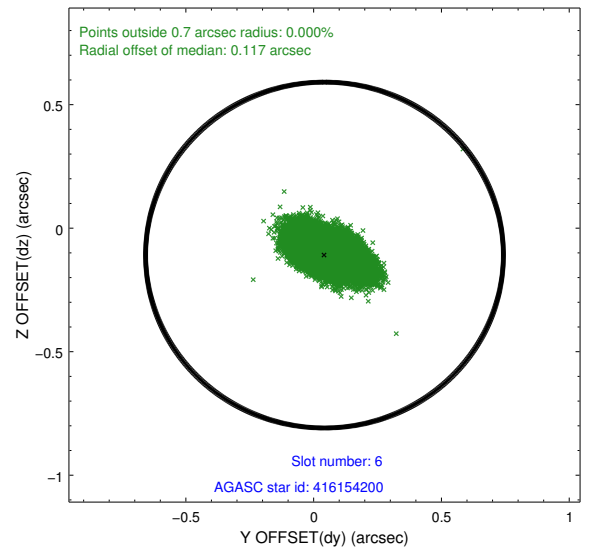
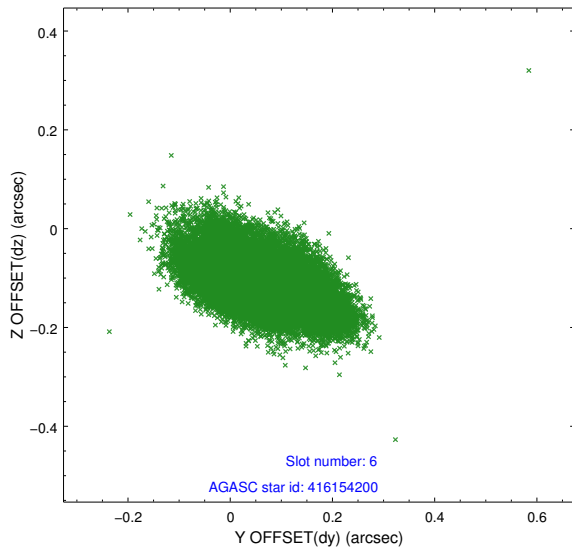
2.4.2 Slot 4



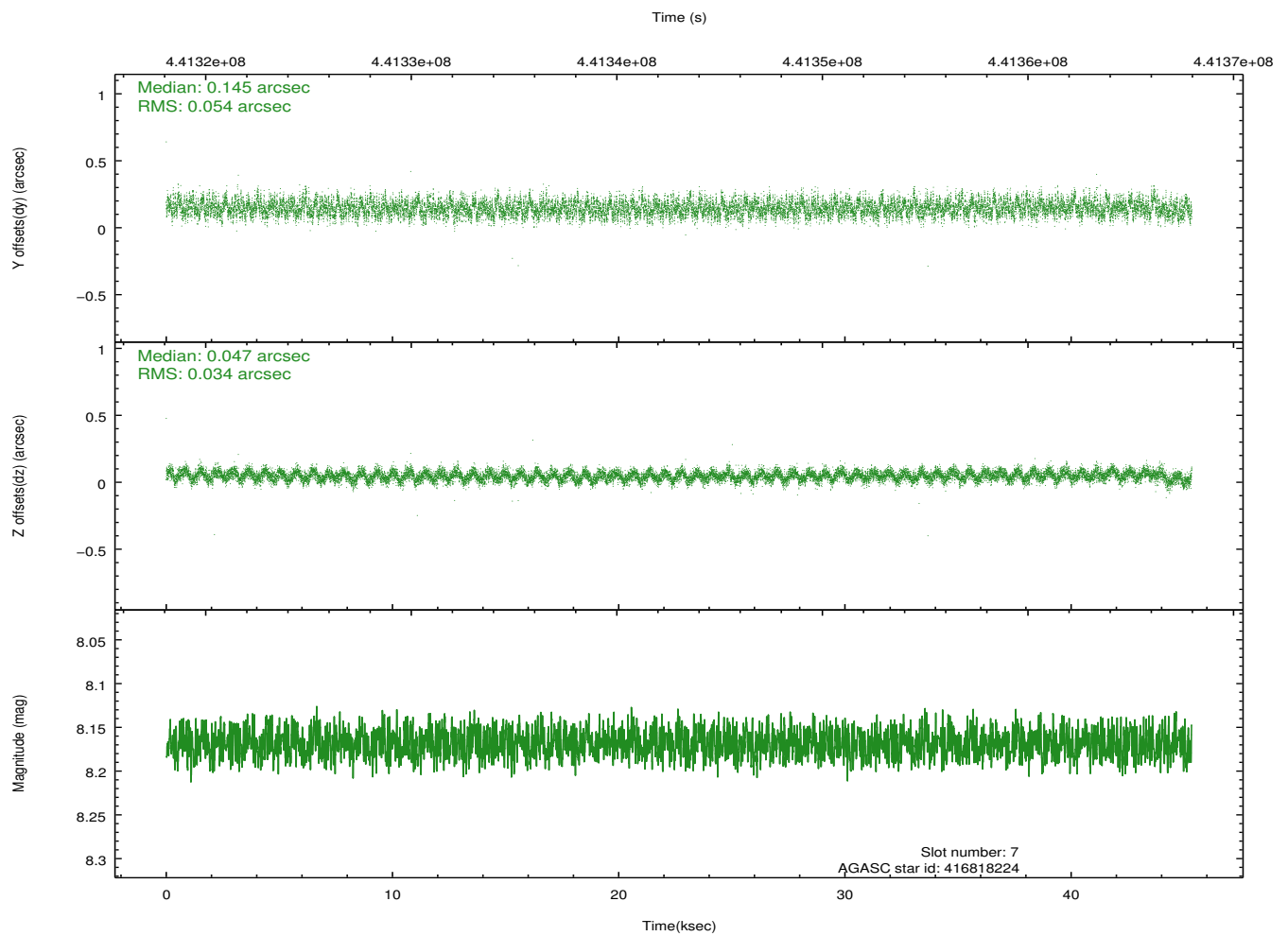
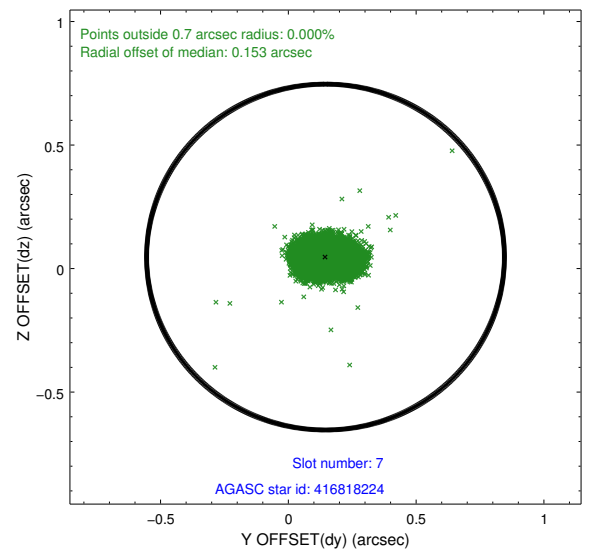
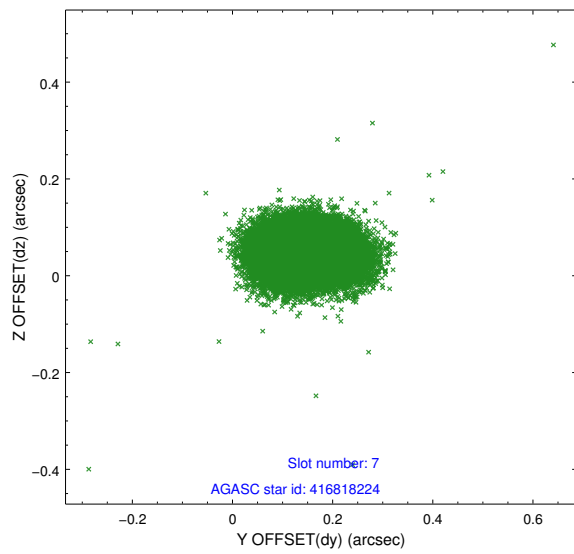
2.4.3 Slot 5



2.4.4 Slot 6

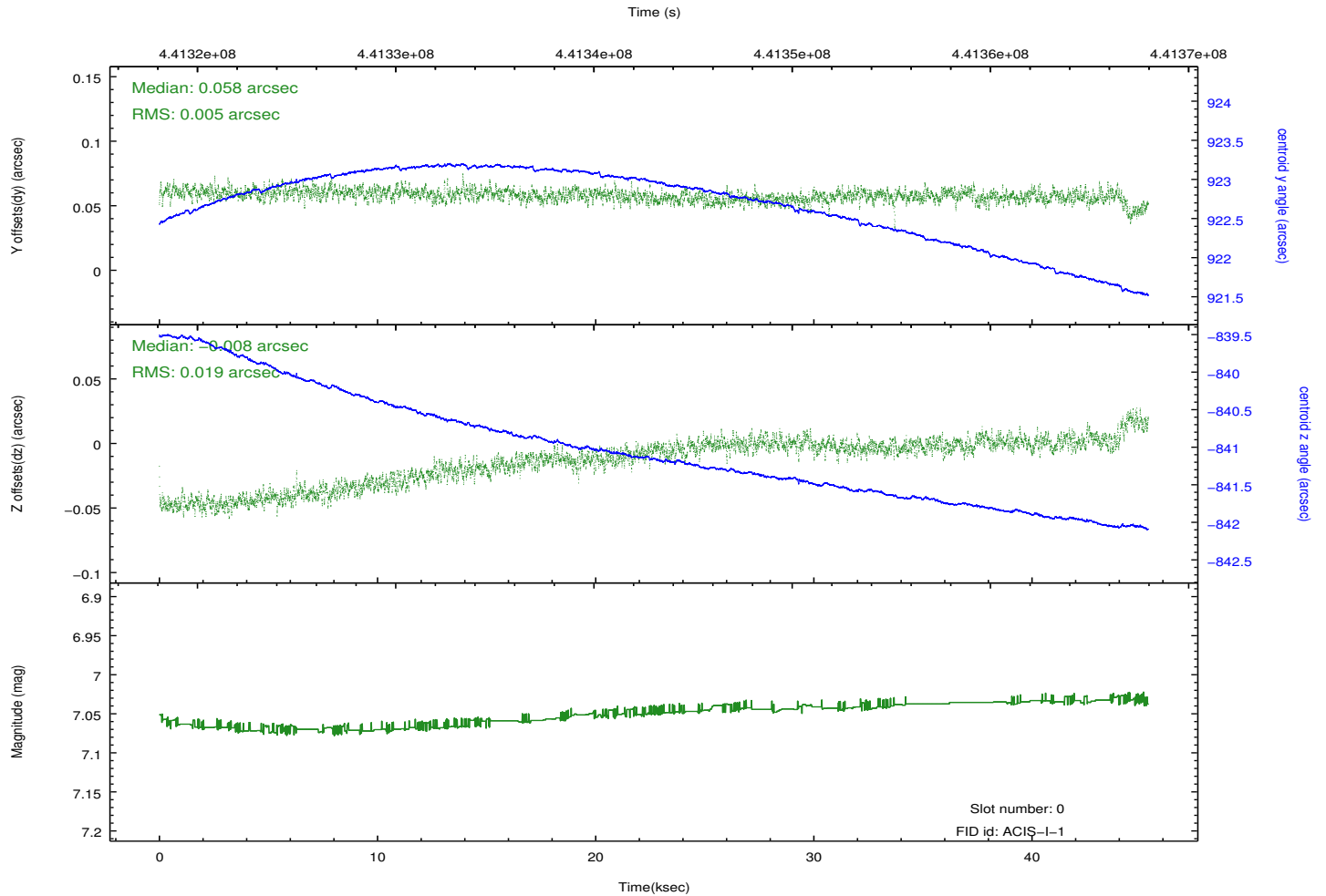
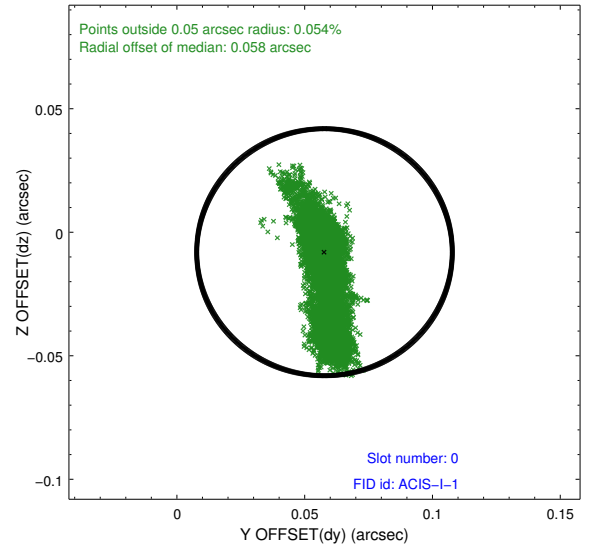
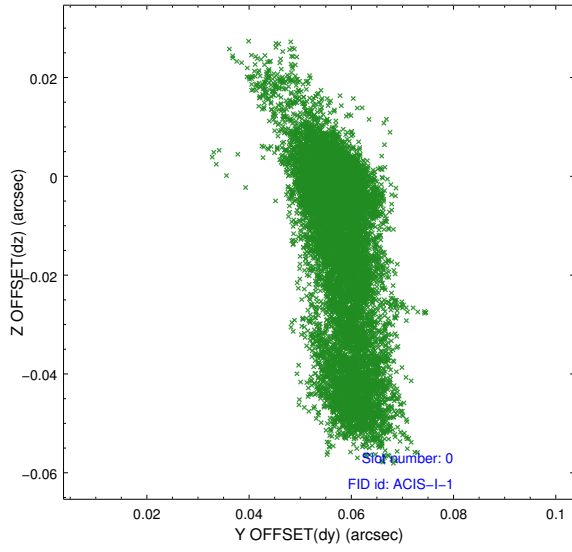


2.4.5 Slot 7

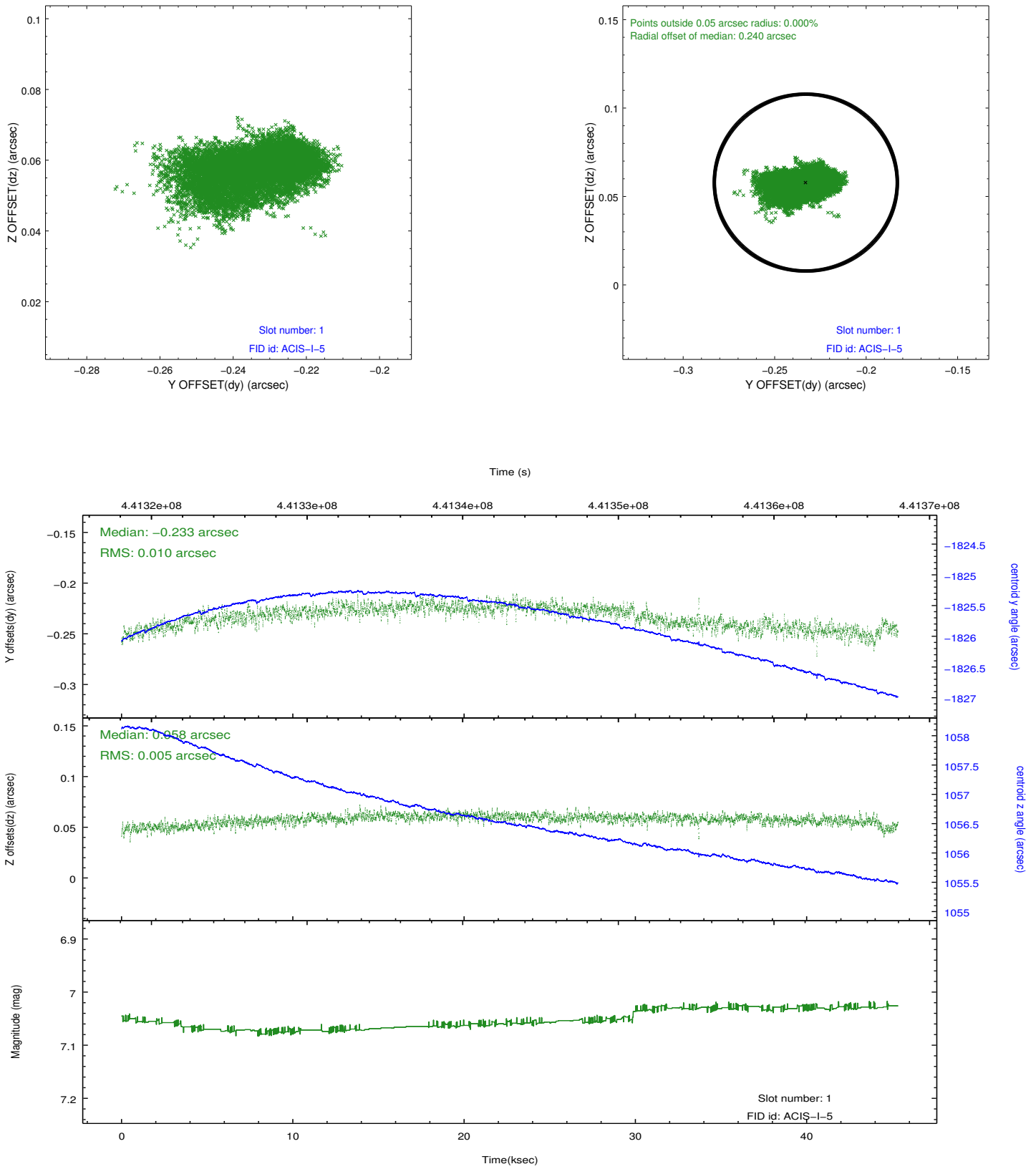


2.5 FID Slots

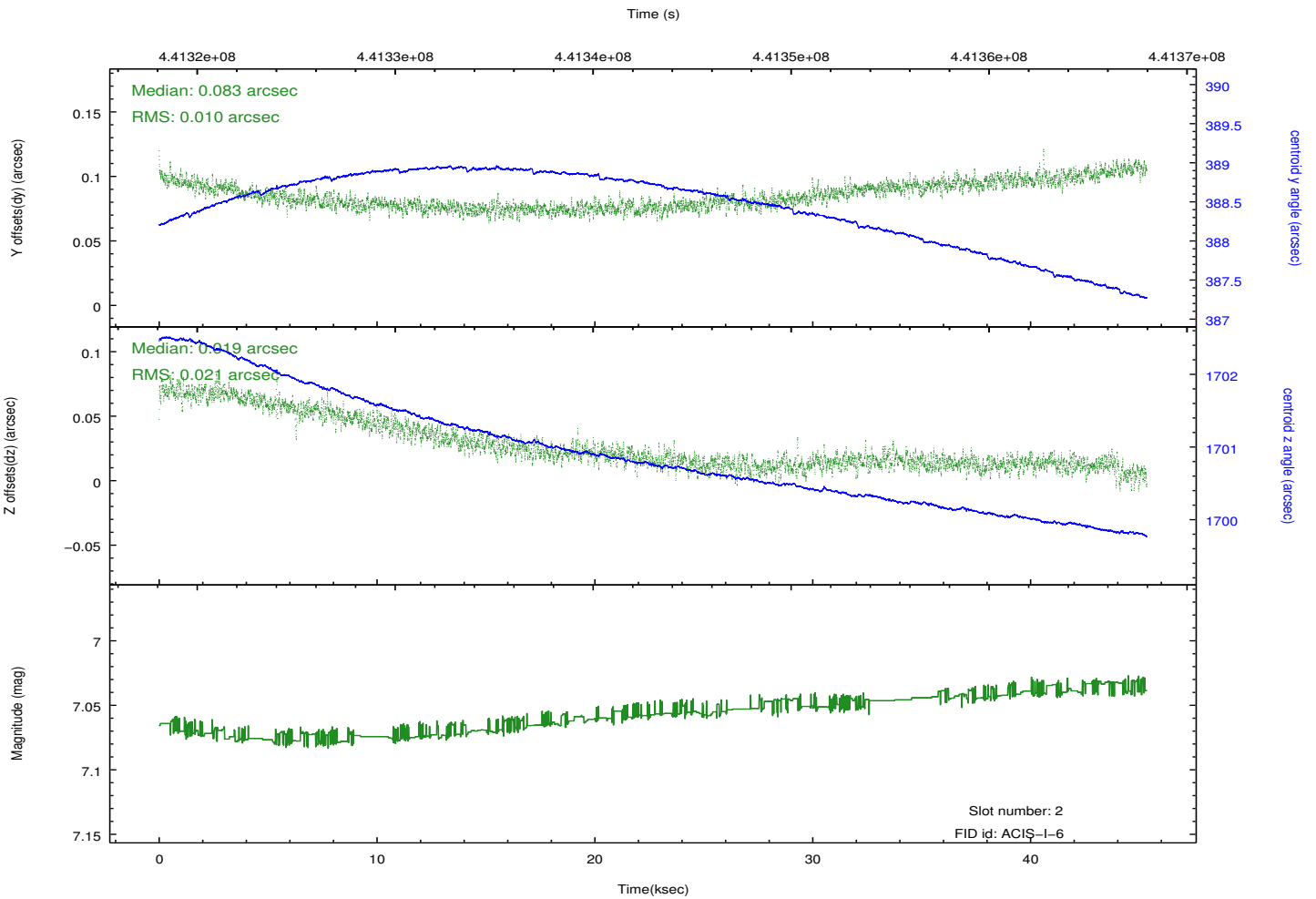
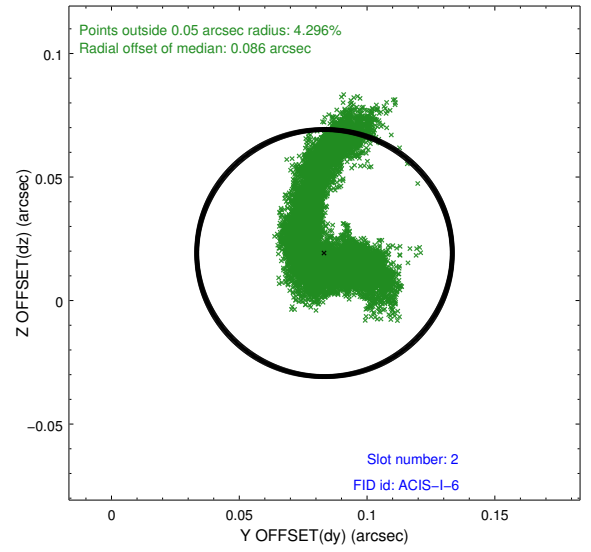
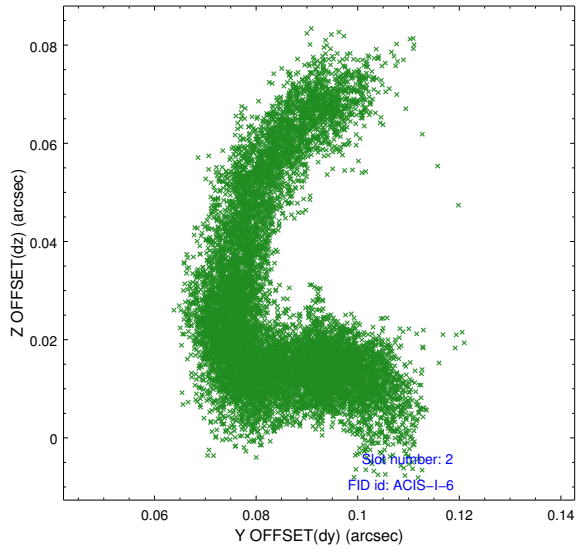
2.5.1 Slot 0



2.5.2 Slot 1



2.5.3 Slot 2



A Summary

A.1 Status

V&V Scientist	Beth Sundheim
V&V Date (YYYY-MM-DD)	2012.02.29
V&V Edition	1
V&V Disposition and Status	OK
V&V Charge Time	45.177930934727

A.2 Comments

Joint proposal: XMM