

V&V Reference Report

L2 ASCDS Version : 8.4.5

Observation 13958 - L2 Version 2
Chandra X-Ray Center

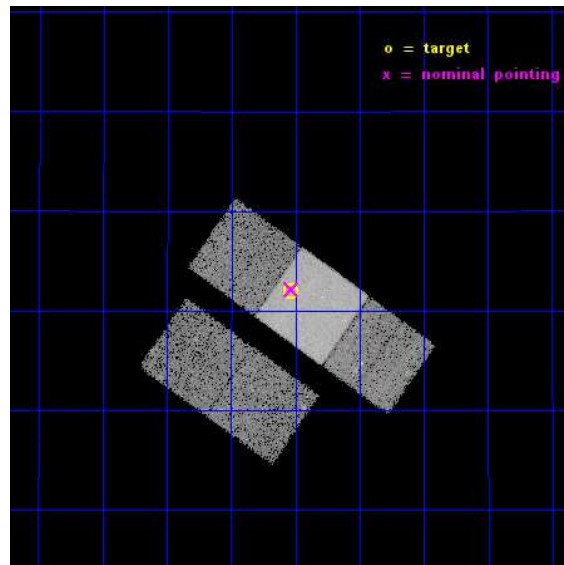
L2 Processing Date : Nov 29 2014

Contents

1	Front	2
2	OBI	3
2.1	OBI	3
2.1.1	Images	3
2.1.2	Bias	3
2.1.3	Parameters	4
2.1.4	Events	4
2.2	Compared Parameters	5
2.3	Aspect	6
2.4	Star Slots	9
2.4.1	Slot 3	9
2.4.2	Slot 4	10
2.4.3	Slot 5	11
2.4.4	Slot 6	12
2.4.5	Slot 7	13
2.5	FID Slots	14
2.5.1	Slot 0	14
2.5.2	Slot 1	15
2.5.3	Slot 2	16
A	Summary	17
A.1	Status	17
A.2	Comments	17

1 Front

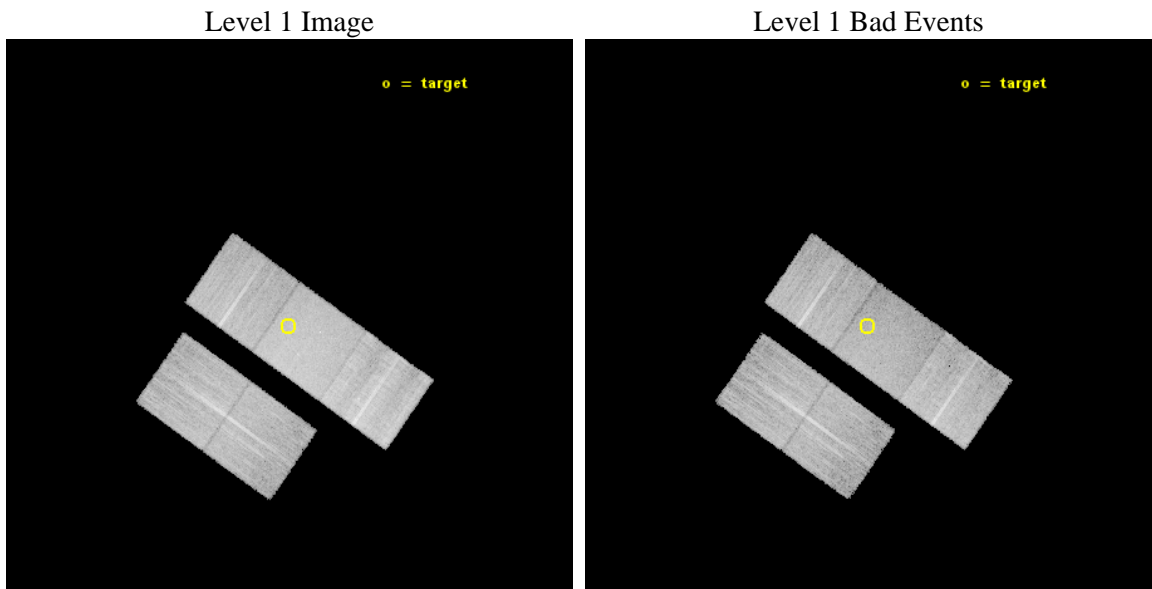
seq_num	702680	Sequence number
obs_id	13958	Observation id
title	Identifying Analogs of NGC 6240: Galaxies with Dual Supermassive Black Holes	Proposal title
observer	Dr. Julia Comerford	Principal investigator
object	SDSS J132231.86+263159.1	Source name
dtcycle	0	
cycle	P	events from which exps? Prim/Second/Both
ra_targ	200.632917	Observer's specified target RA [deg]
dec_targ	26.533083	Observer's specified target Dec [deg]
ra_nom	200.63276377063	Nominal RA [deg]
dec_nom	26.536092904122	Nominal Dec [deg]
roll_nom	35.218329553333	Nominal Roll [deg]
revision	2	Processing version of data
ontime	20069.122083008	Sum of GTIs [s]
livetime	19806.904228321	Livetime [s]
ontime2	20068.957922995	Sum of GTIs [s]
ontime3	20069.040003002	Sum of GTIs [s]
ontime6	20069.081043005	Sum of GTIs [s]
ontime7	20069.122083008	Sum of GTIs [s]
ontime8	20062.71702224	Sum of GTIs [s]
l2events	105951	Number of level 2 events



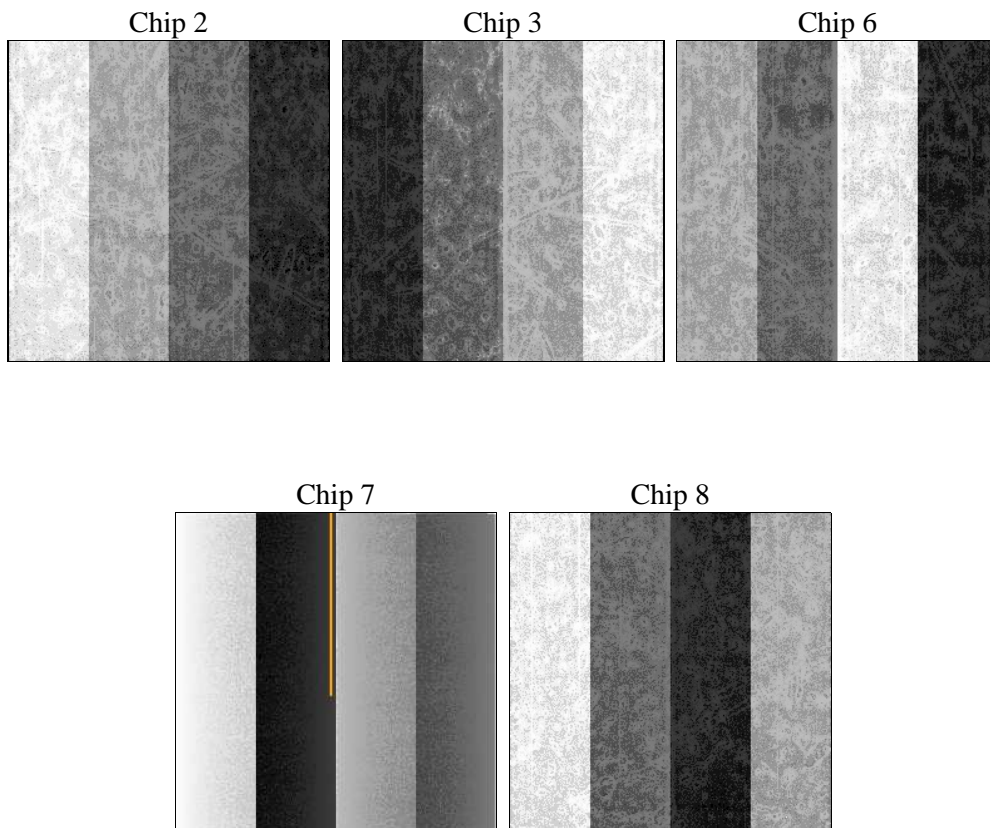
2 OBI

2.1 OBI

2.1.1 Images



2.1.2 Bias



2.1.3 Parameters

obi_num	0	Obi number	sched_exp_time	20000.000000	[s] Scheduled observation exposure time
ascdsver	10.3	Processing system revision	ontime	20069.122083008	Sum of GTIs [s]
caldbver	4.6.4	 	ontime2	20068.957922995	Sum of GTIs [s]
date	2014-11-29T07:03:19	Date and time of file creation	ontime3	20069.040003002	Sum of GTIs [s]
revision	2	Processing version of data	ontime6	20069.081043005	Sum of GTIs [s]
			ontime7	20069.122083008	Sum of GTIs [s]
			ontime8	20062.71702224	Sum of GTIs [s]
			l1events	591855	Number of level 1 events

2.1.4 Events

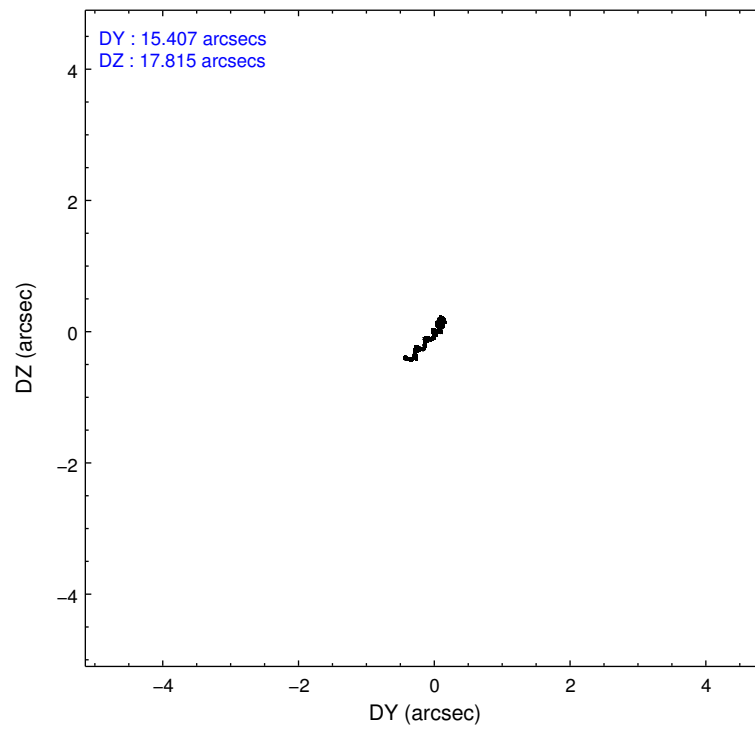
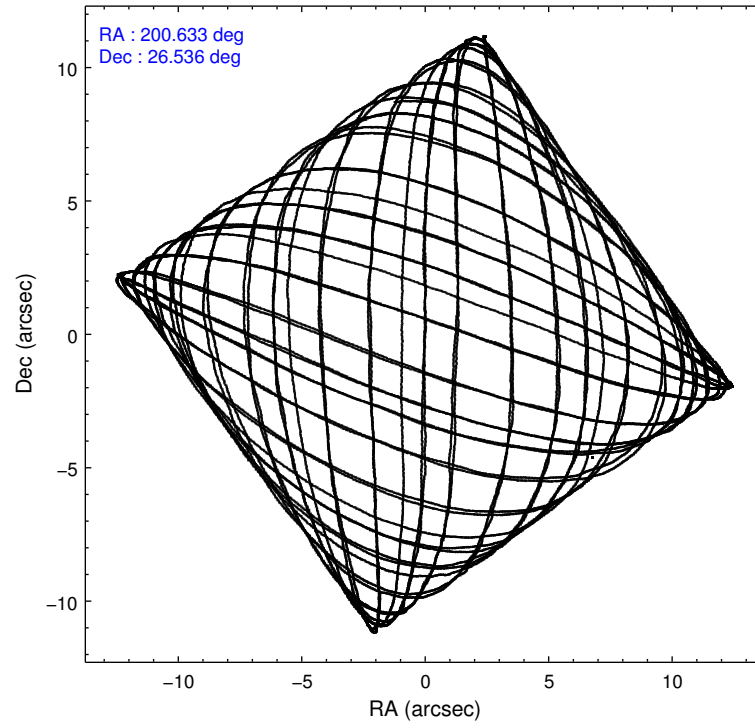
	ccd 2	ccd 3	ccd 6	ccd 7	ccd 8
level 1 events	104795	97390	104154	139988	145528
rejected events	92690	85945	91477	77714	103922
rejected %	88%	88%	87%	55%	71%

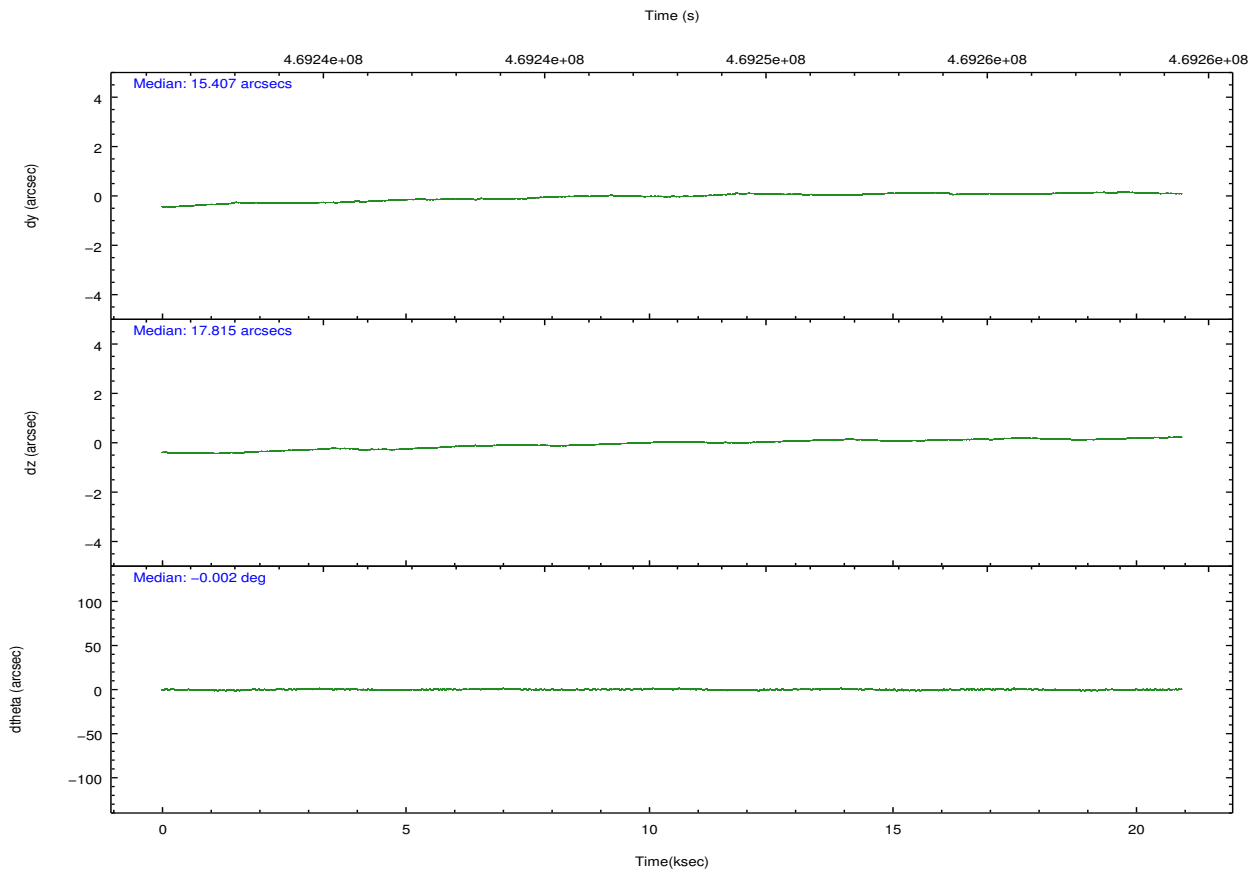
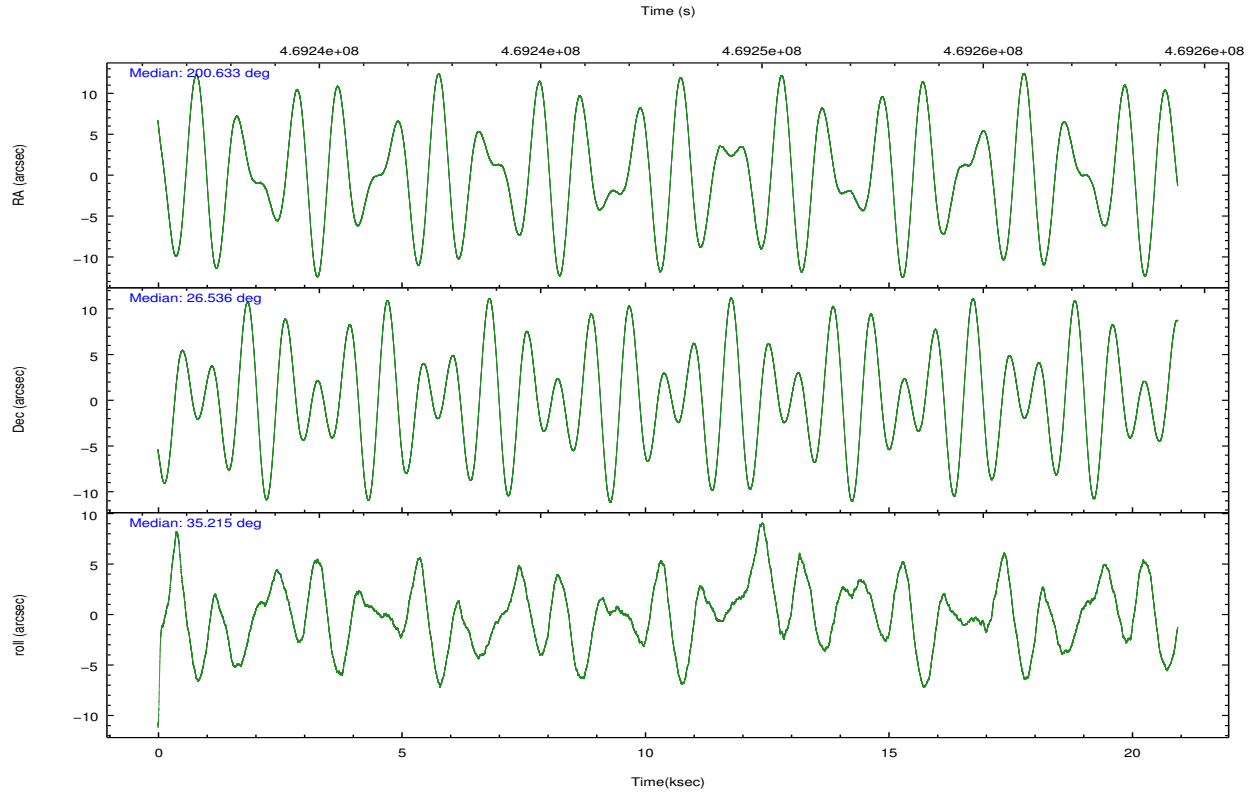
	ccd 2	ccd 3	ccd 6	ccd 7	ccd 8
grade 0 events	4282	3986	4391	5712	13407
	4%	4%	4%	4%	9%
grade 1 events	64	67	65	177	132
	0%	0%	0%	0%	0%
grade 2 events	3083	2633	2776	12741	8902
	2%	2%	2%	9%	6%
grade 3 events	1246	1244	1288	5444	4696
	1%	1%	1%	3%	3%
grade 4 events	1209	1216	1310	5459	4401
	1%	1%	1%	3%	3%
grade 5 events	4500	5312	5405	14274	7819
	4%	5%	5%	10%	5%
grade 6 events	2288	2369	2917	32944	10205
	2%	2%	2%	23%	7%
grade 7 events	88123	80563	86002	63237	95966
	84%	82%	82%	45%	65%

2.2 Compared Parameters

Parameter	Planned	Actual	Parameter	Planned	Actual
Instrument	ACIS	ACIS	Obspar format version number	7	7
Detector	ACIS-23678	ACIS-23678	Obspar file type	PREDICTED	ACTUAL
Grating	NONE	NONE	Obspar update status	NONE	UPDATED
Data mode	FAINT	FAINT	CCD I0 on	N	N
Observation mode	POINTING	POINTING	CCD I1 on	N	N
[deg] Pointing RA	200.620334	200.6327637706271	CCD I2 on	O2	Y
[deg] Pointing Dec	26.511124	26.5360929041224	CCD I3 on	O1	Y
[deg] Pointing Roll	35.067260	35.21832955333253	CCD S0 on	N	N
[mm] SIM focus pos	-0.684267	-0.6828225247311905	CCD S1 on	N	N
[mm] SIM defocus	0	0.001444936568705701	CCD S2 on	Y	Y
[mm] SIM translation stage pos	-190.132523	-190.145094680475	CCD S3 on	Y	Y
[mm] SIM translation stage offset	0	0.01257209746719923	CCD S4 on	O3	Y
[s] Observation start time (MET)	469238336.184000	469237016.29298	CCD S5 on	N	N
Observation start date	2012-11-13T23:57:49	2012-11-13T23:36:56	Number of optional ACIS chips dropped	0	0
[s] Observation end time (MET)	469258336.184000	469259596.5317	On-chip summing requested	N	N
Observation end date	2012-11-14T05:31:09	2012-11-14T05:53:16	Subarray requested	NONE	NONE
Read mode	TIMED	TIMED	Alternating exposures requested	N	N
			[s] Primary exposure time	0.000000	3.1

2.3 Aspect





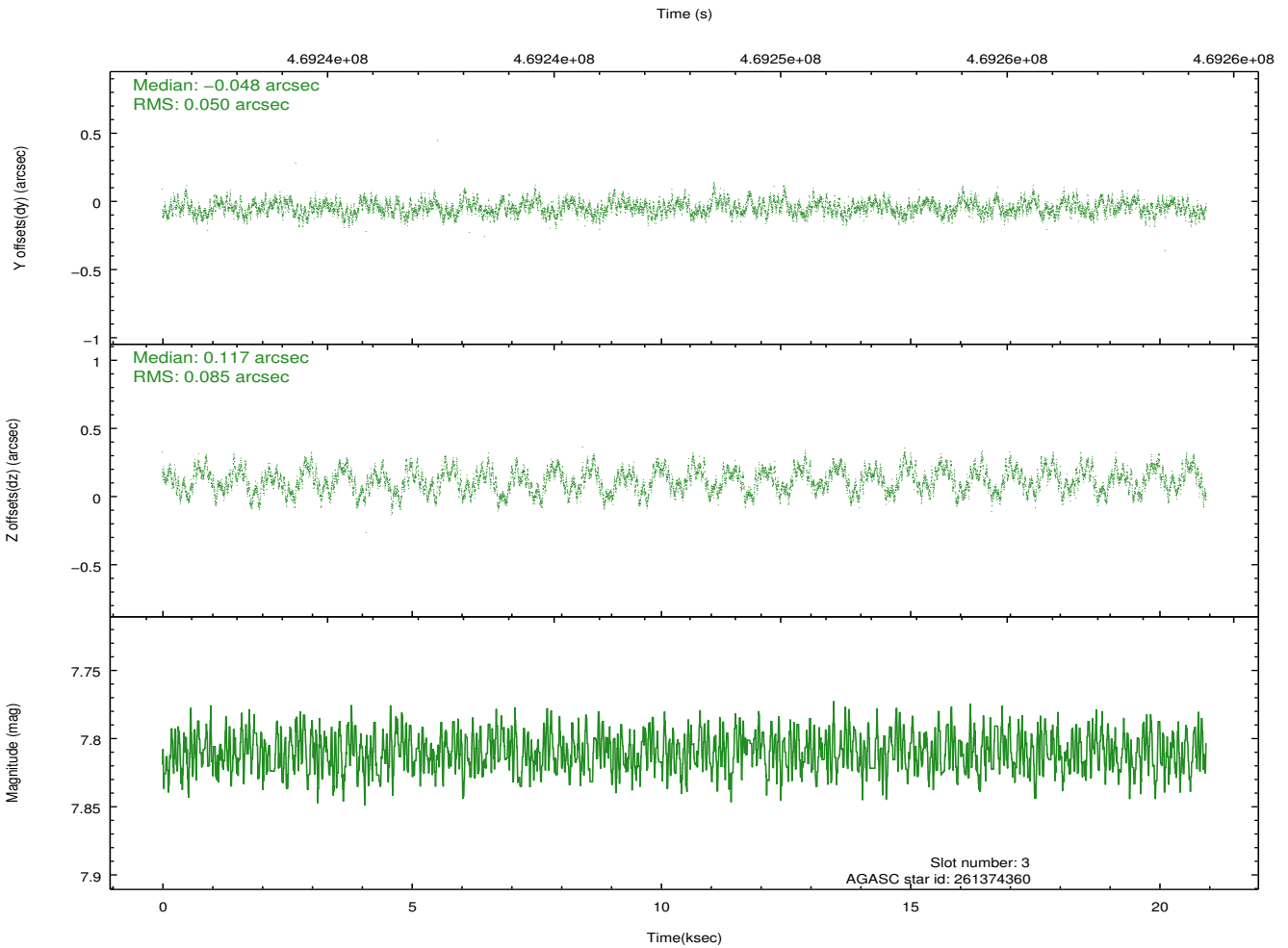
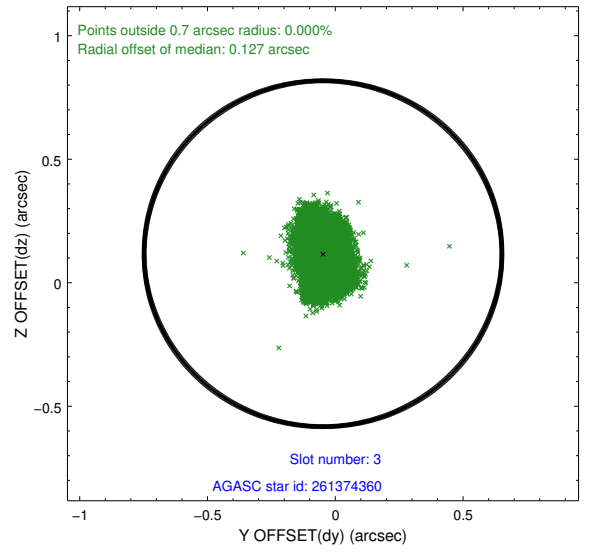
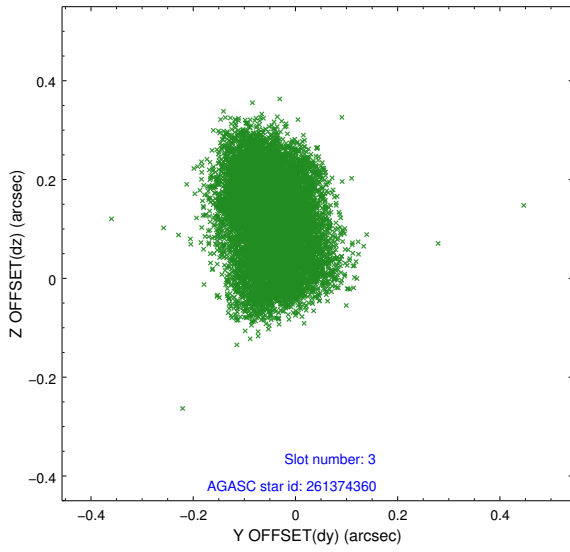
Slot Statistics

slot	status	used	id	mag	n_pts	med_dy	med_dz	dr1	dr2	ra	dec	mean_y	mean_z
0	FID		ACIS-S-2	6.92	5108	-0.081	-0.032	0.007	0.012	0.000000	0.000000	-768.47	-1739.12
1	FID		ACIS-S-4	7.01	5108	0.183	0.048	0.010	0.017	0.000000	0.000000	2145.05	169.17
2	FID		ACIS-S-5	7.03	5108	-0.133	-0.007	0.012	0.020	0.000000	0.000000	-1821.09	163.10
3	GUIDE	used	261374360	7.81	10216	-0.048	0.117	0.108	0.166	200.642321	26.115706	-760.79	-1204.34
4	GUIDE	used	261375944	9.20	10207	0.181	0.512	0.118	0.187	200.673059	25.839688	-1248.38	-2076.04
5	GUIDE	used	261628512	8.62	10211	0.110	-0.295	0.072	0.120	200.108996	26.648748	-1059.85	1353.10
6	GUIDE	used	261634968	8.74	10210	-0.257	-0.214	0.096	0.145	200.551287	27.163885	1168.63	2050.78
7	GUIDE	used	261637304	9.42	10207	0.009	-0.113	0.157	0.237	200.563342	26.689565	219.23	631.77

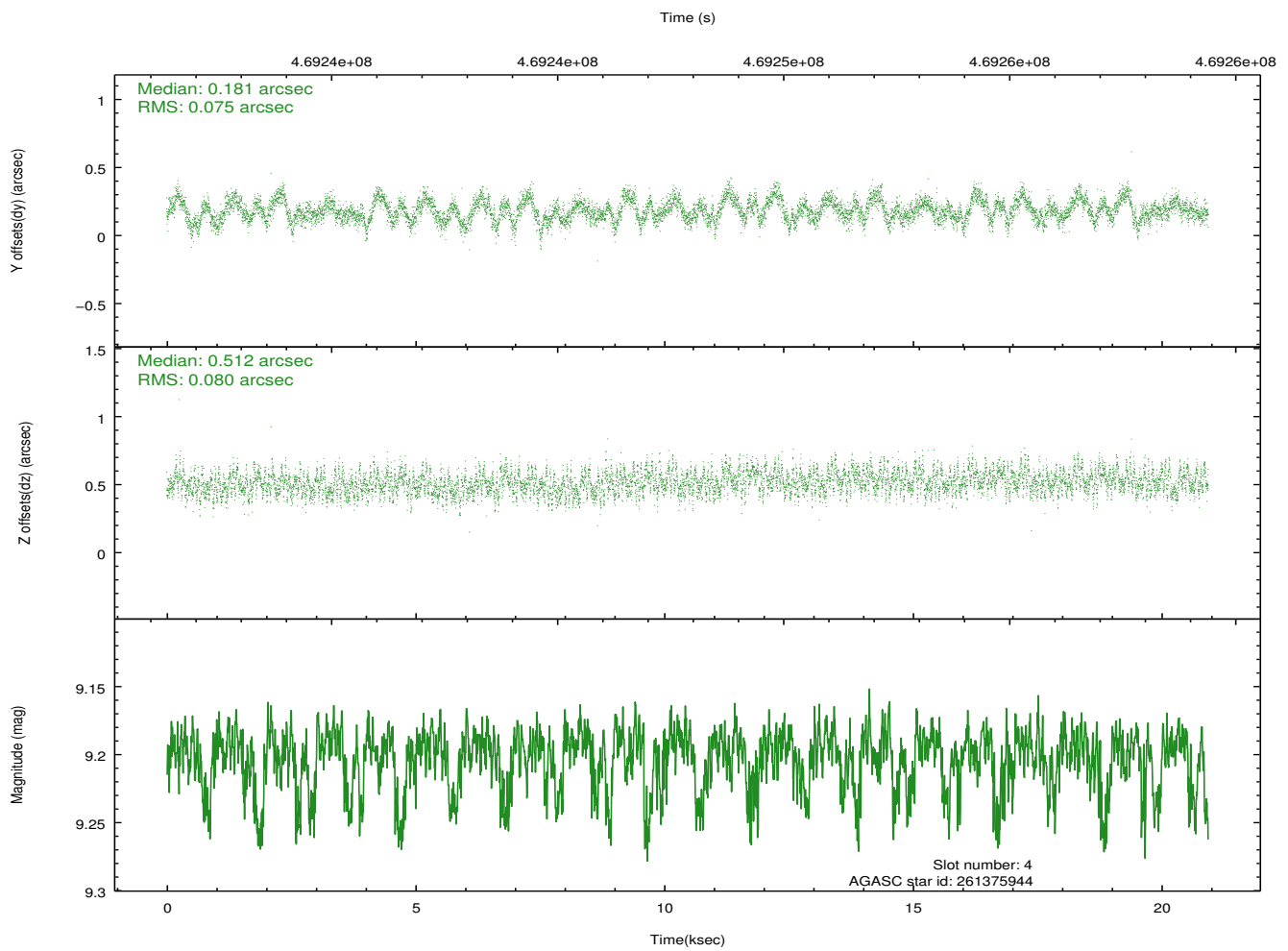
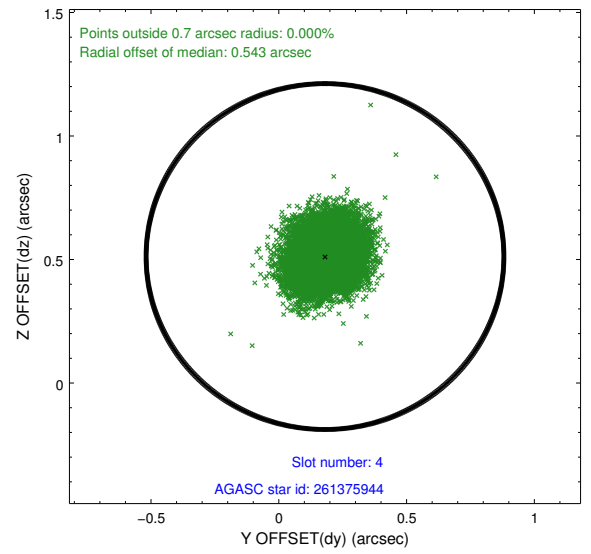
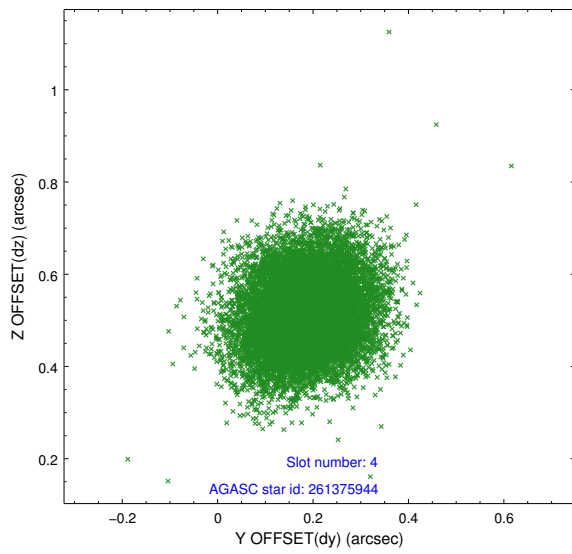
∞

2.4 Star Slots

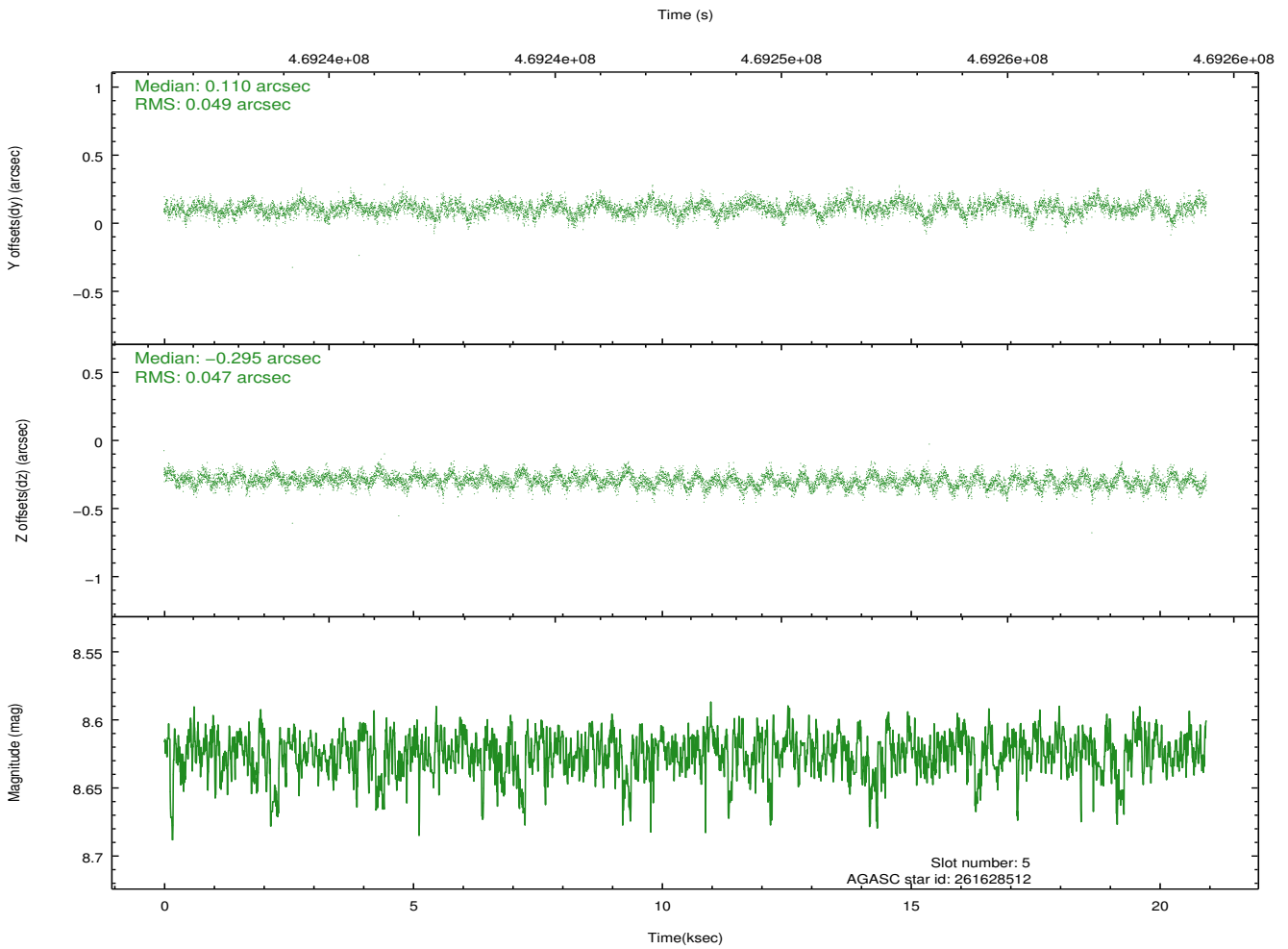
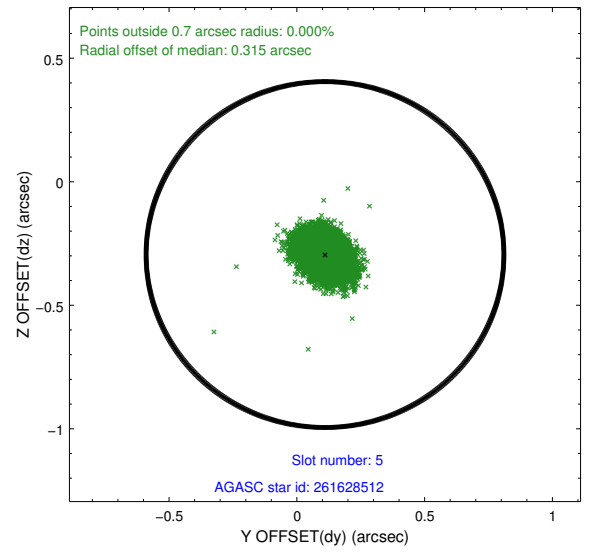
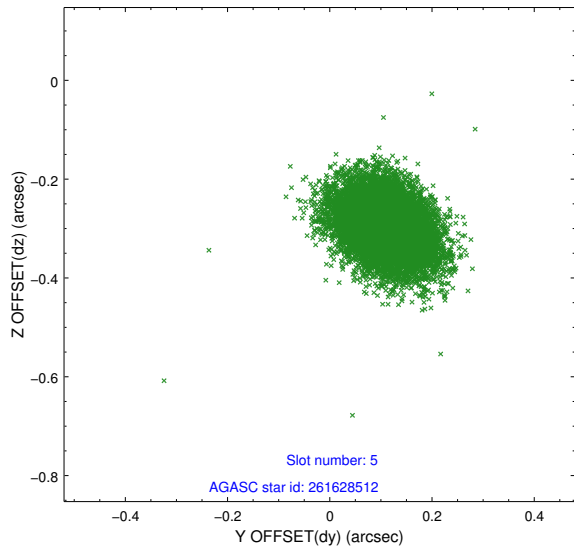
2.4.1 Slot 3



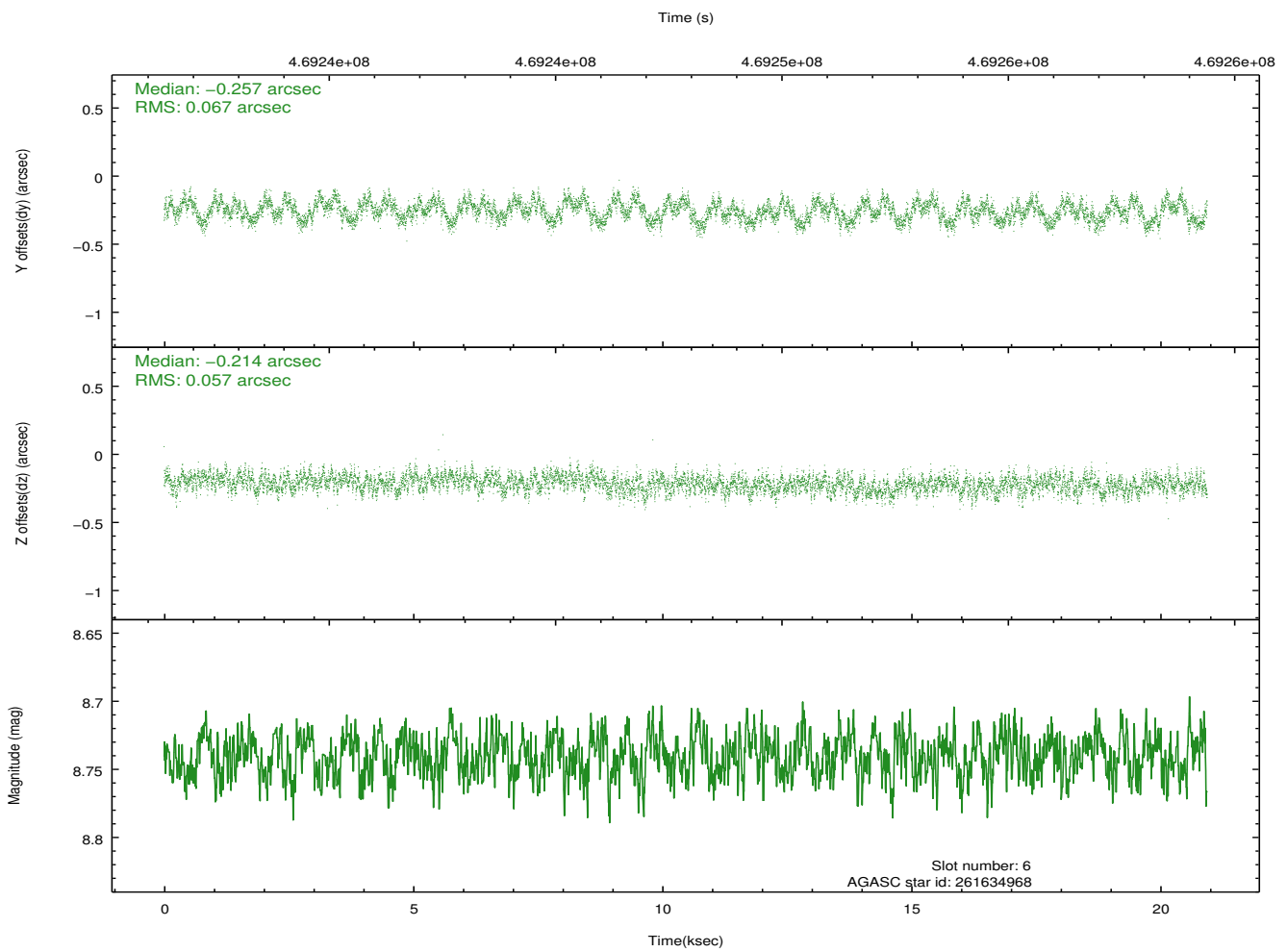
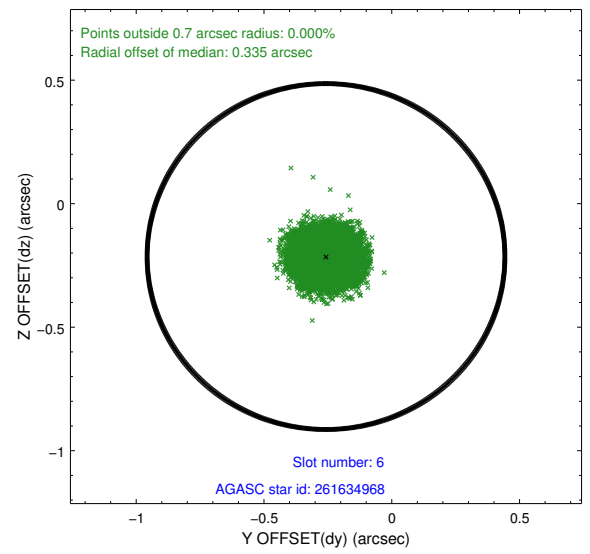
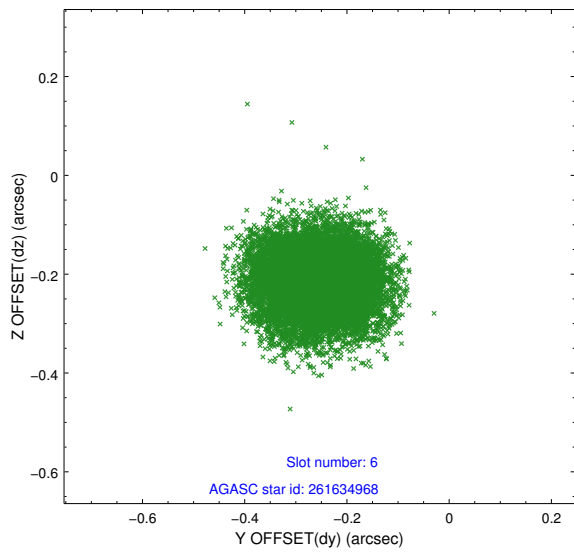
2.4.2 Slot 4



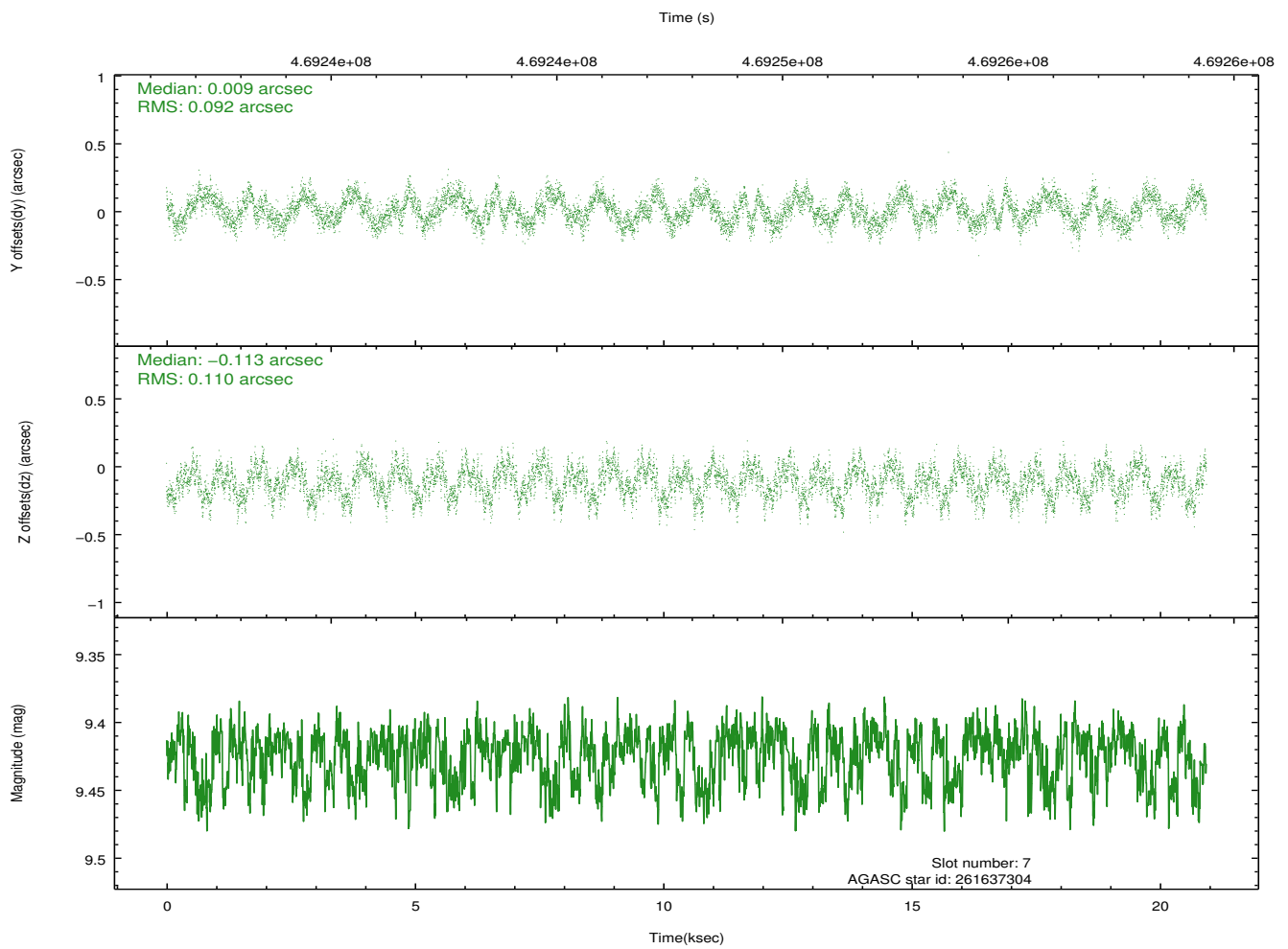
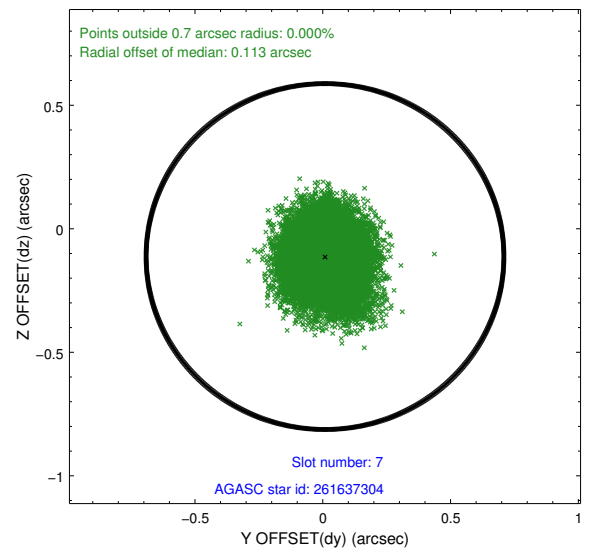
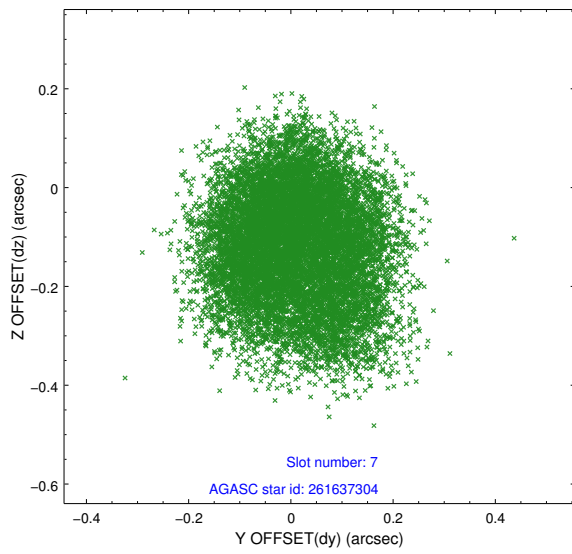
2.4.3 Slot 5



2.4.4 Slot 6

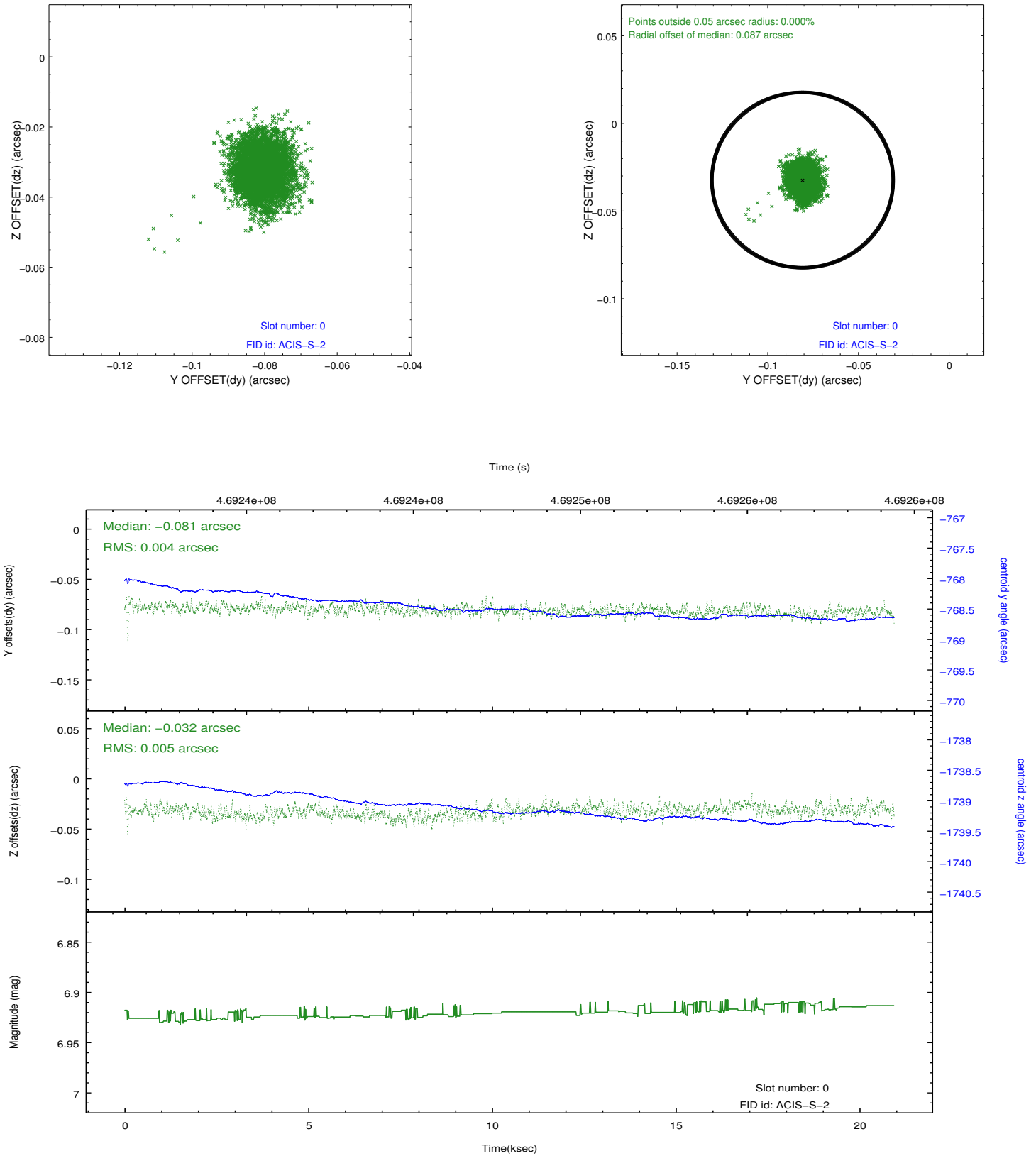


2.4.5 Slot 7

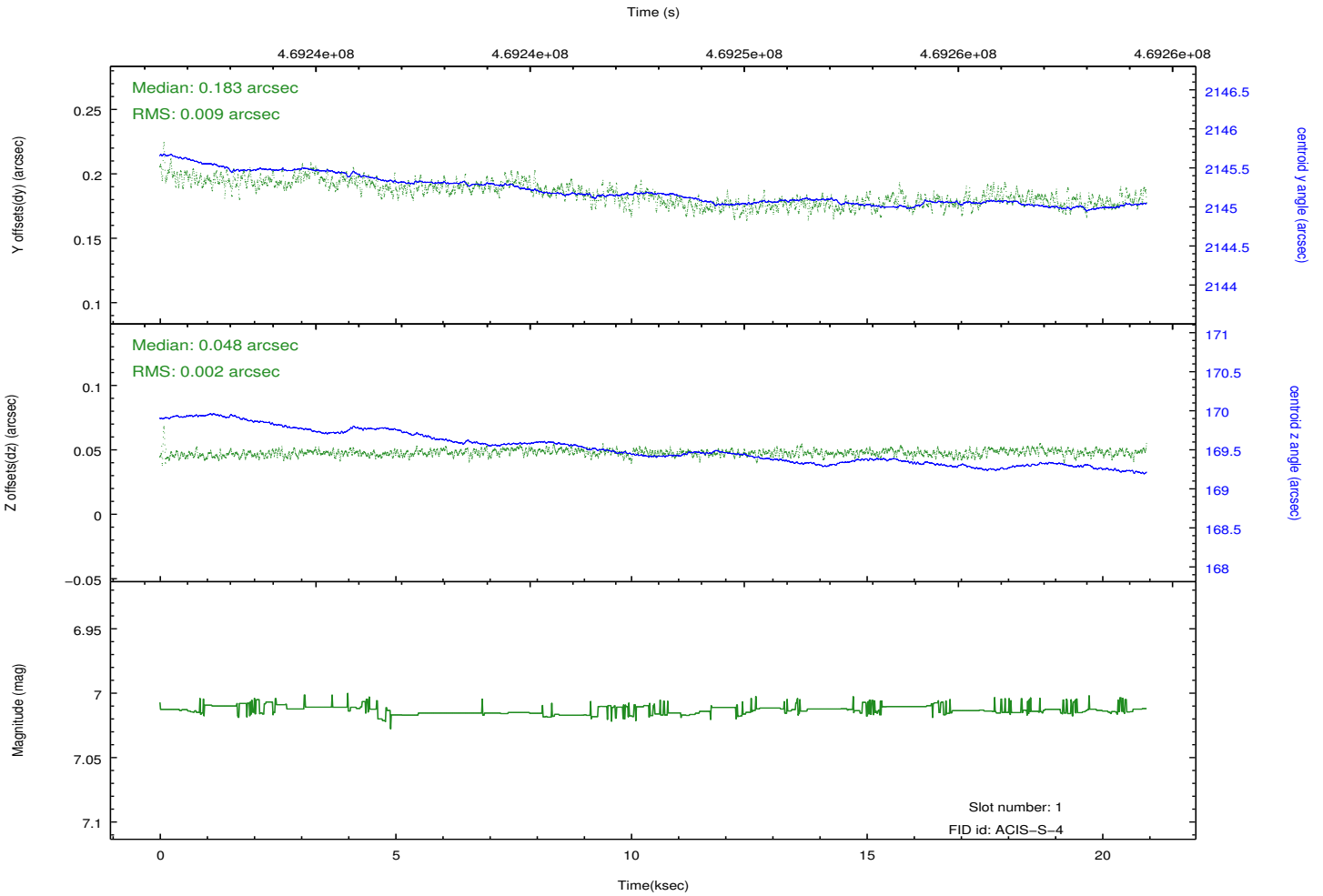
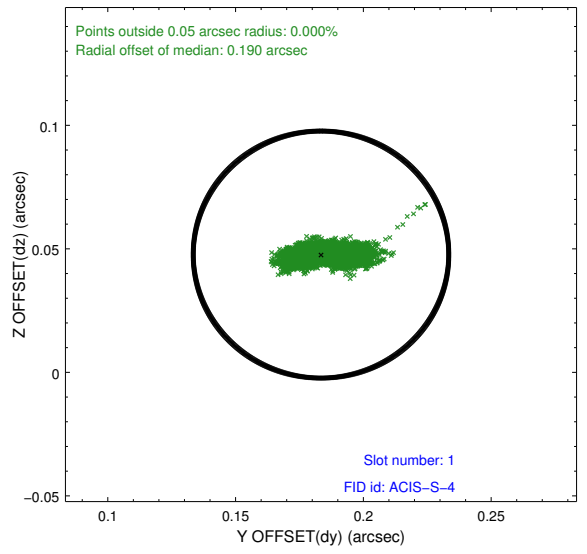
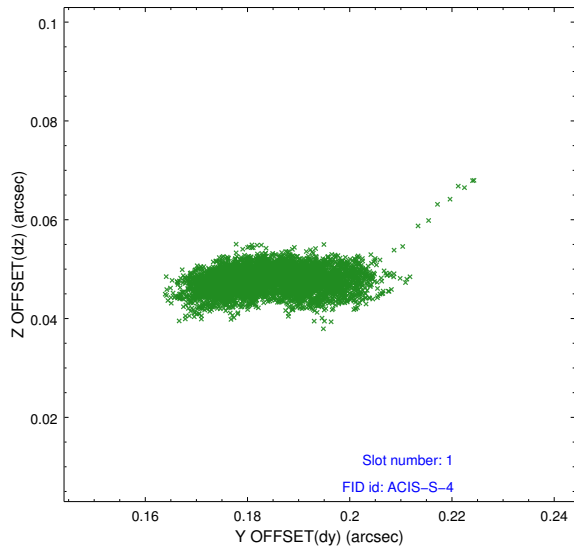


2.5 FID Slots

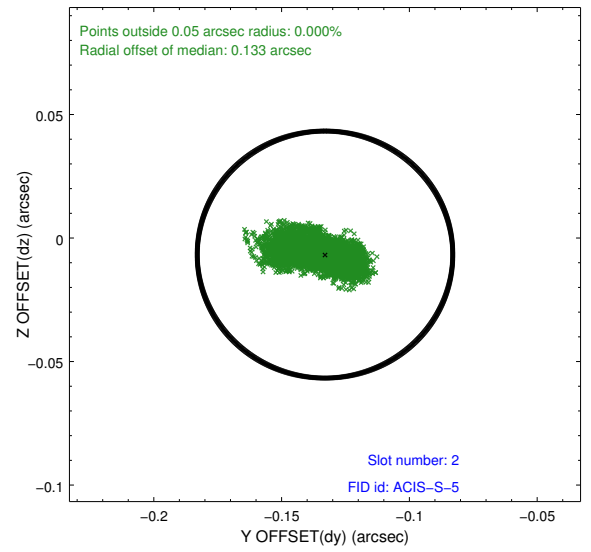
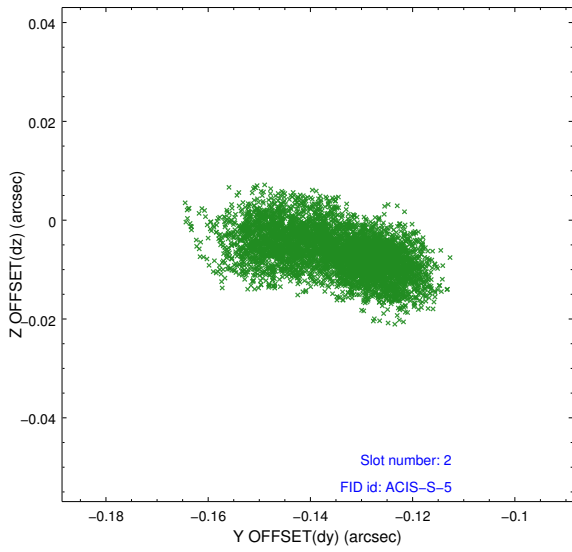
2.5.1 Slot 0



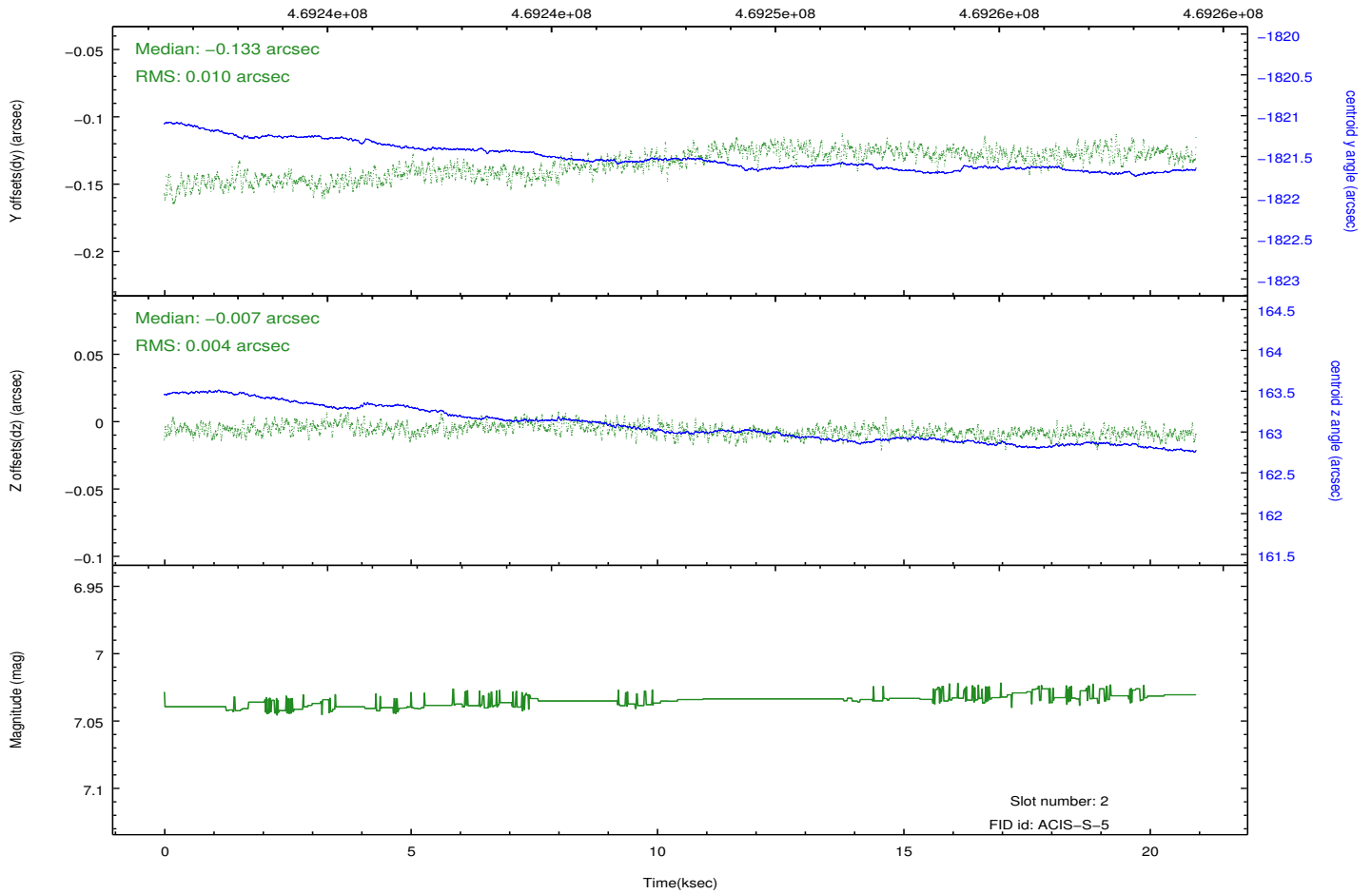
2.5.2 Slot 1



2.5.3 Slot 2



Time (s)



A Summary

A.1 Status

V&V Scientist	Jen Lauer
V&V Date (YYYY-MM-DD)	2014.12.03
V&V Edition	1
V&V Disposition and Status	OK
V&V Charge Time	20.069122083008

A.2 Comments

Joint Proposal: HST

=====

These data have been reprocessed with new aspect alignment calibration files that correct small mean offsets (up to 0.4 arcsecs) and improve overall astrometric accuracy. The new calibration was determined using data from the time period being reprocessed and was performed using cross-correlation of X-ray sources with radio and optical counterparts.