

V&V Reference Report

L2 ASCDS Version : 8.4.5

Observation 14008 - L2 Version 1
Chandra X-Ray Center

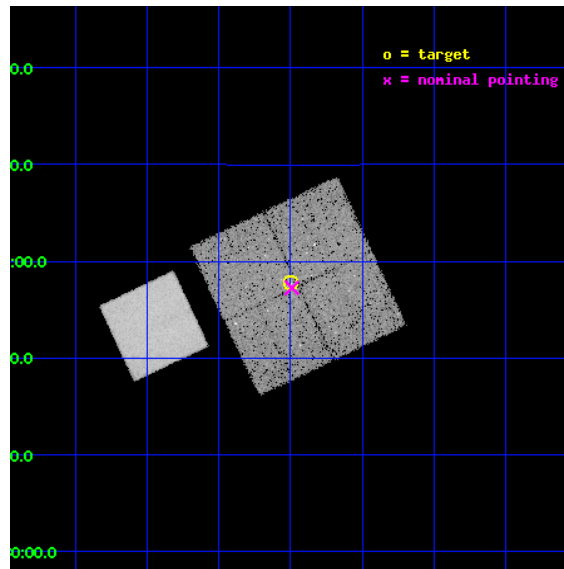
L2 Processing Date : Jul 5 2012

Contents

1	Front	2
2	OBI	3
2.1	OBI	3
2.1.1	Images	3
2.1.2	Bias	3
2.1.3	Parameters	4
2.1.4	Events	4
2.2	Compared Parameters	5
2.3	Aspect	6
2.4	Star Slots	9
2.4.1	Slot 3	9
2.4.2	Slot 4	10
2.4.3	Slot 5	11
2.4.4	Slot 6	12
2.4.5	Slot 7	13
2.5	FID Slots	14
2.5.1	Slot 0	14
2.5.2	Slot 1	15
2.5.3	Slot 2	16
A	Summary	17
A.1	Status	17
A.2	Comments	17

1 Front

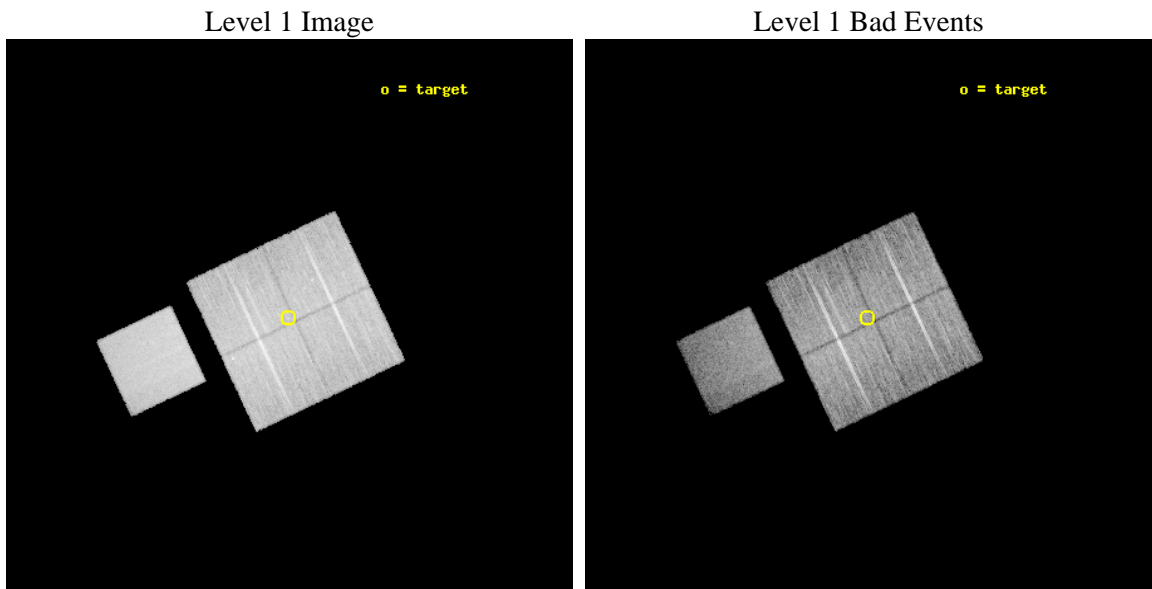
seq_num	801188	Sequence number
obs_id	14008	Observation id
title	GAMA groups and cosmic feedback	Proposal title
observer	Prof Trevor Ponman	Principal investigator
object	G15-28	Source name
dtcycle	0	
cycle	P	events from which exps? Prim/Second/Both
ra_targ	222.74875	Observer's specified target RA [deg]
dec_targ	-0.0375	Observer's specified target Dec [deg]
ra_nom	222.7476279382	Nominal RA [deg]
dec_nom	-0.045506826238546	Nominal Dec [deg]
roll_nom	244.681704641	Nominal Roll [deg]
revision	1	Processing version of data
ontime	26082.016222537	Sum of GTIs [s]
livetime	25741.235479288	Livetime [s]
ontime0	26081.893102527	Sum of GTIs [s]
ontime1	26081.93414253	Sum of GTIs [s]
ontime2	26081.975182533	Sum of GTIs [s]
ontime3	26082.016222537	Sum of GTIs [s]
ontime7	26082.05726254	Sum of GTIs [s]
l2events	127228	Number of level 2 events



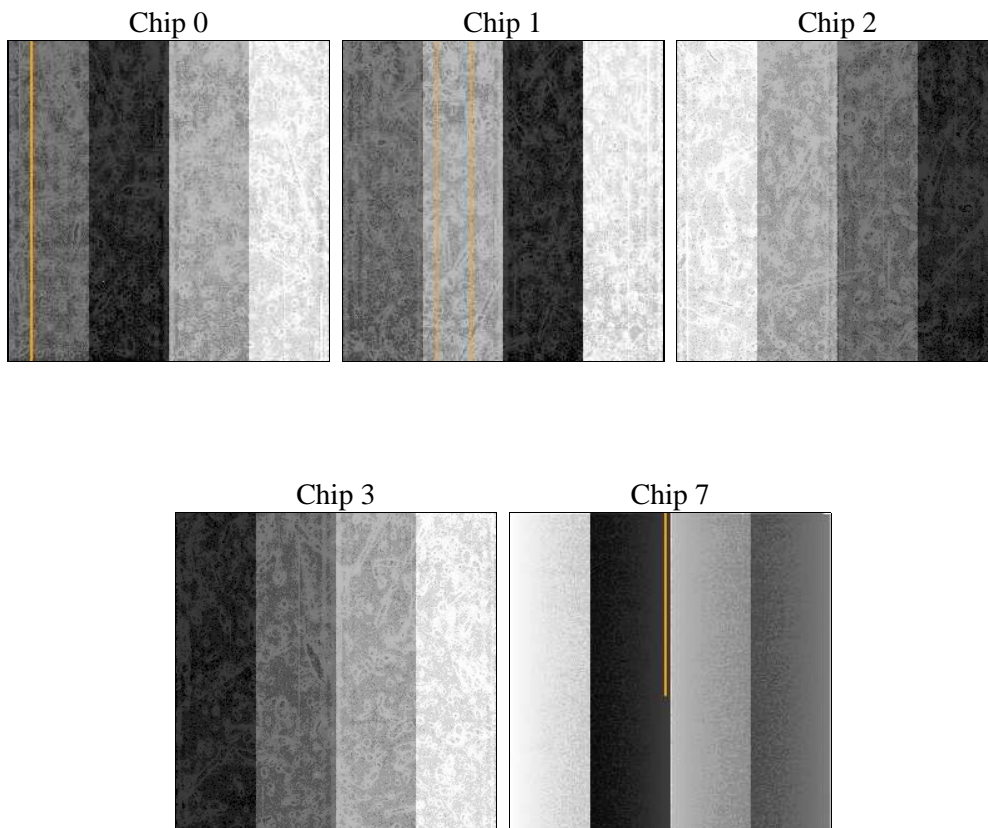
2 OBI

2.1 OBI

2.1.1 Images



2.1.2 Bias



2.1.3 Parameters

obi_num	0	Obi number	sched_exp_time	26015.545000	[s] Scheduled observation exposure time
ascdsver	8.4.5	Processing system revision	ontime	26082.016222537	Sum of GTIs [s]
caldbver	4.5.0	 	ontime0	26081.893102527	Sum of GTIs [s]
date	2012-07-06T00:15:53	Date and time of file creation	ontime1	26081.93414253	Sum of GTIs [s]
revision	1	Processing version of data	ontime2	26081.975182533	Sum of GTIs [s]
			ontime3	26082.016222537	Sum of GTIs [s]
			ontime7	26082.05726254	Sum of GTIs [s]
			l1events	664405	Number of level 1 events

2.1.4 Events

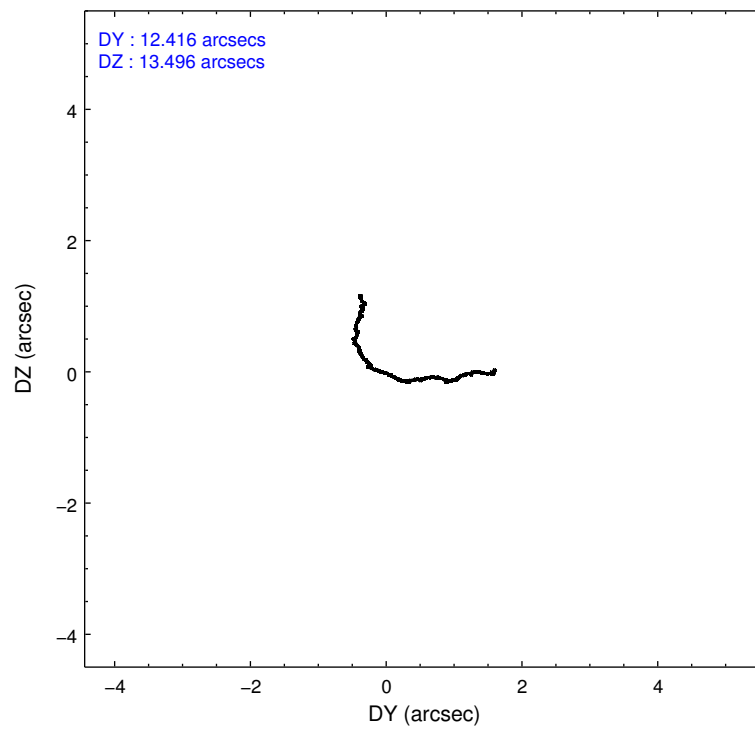
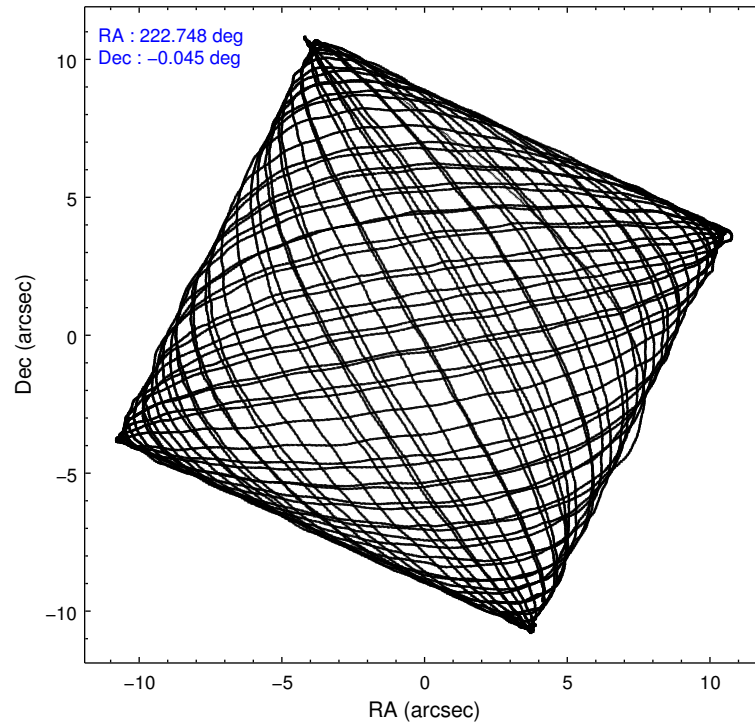
	ccd 0	ccd 1	ccd 2	ccd 3	ccd 7
level 1 events	125192	123030	134463	128147	153573
rejected events	108563	105750	118005	112246	79520
rejected %	86%	85%	87%	87%	51%

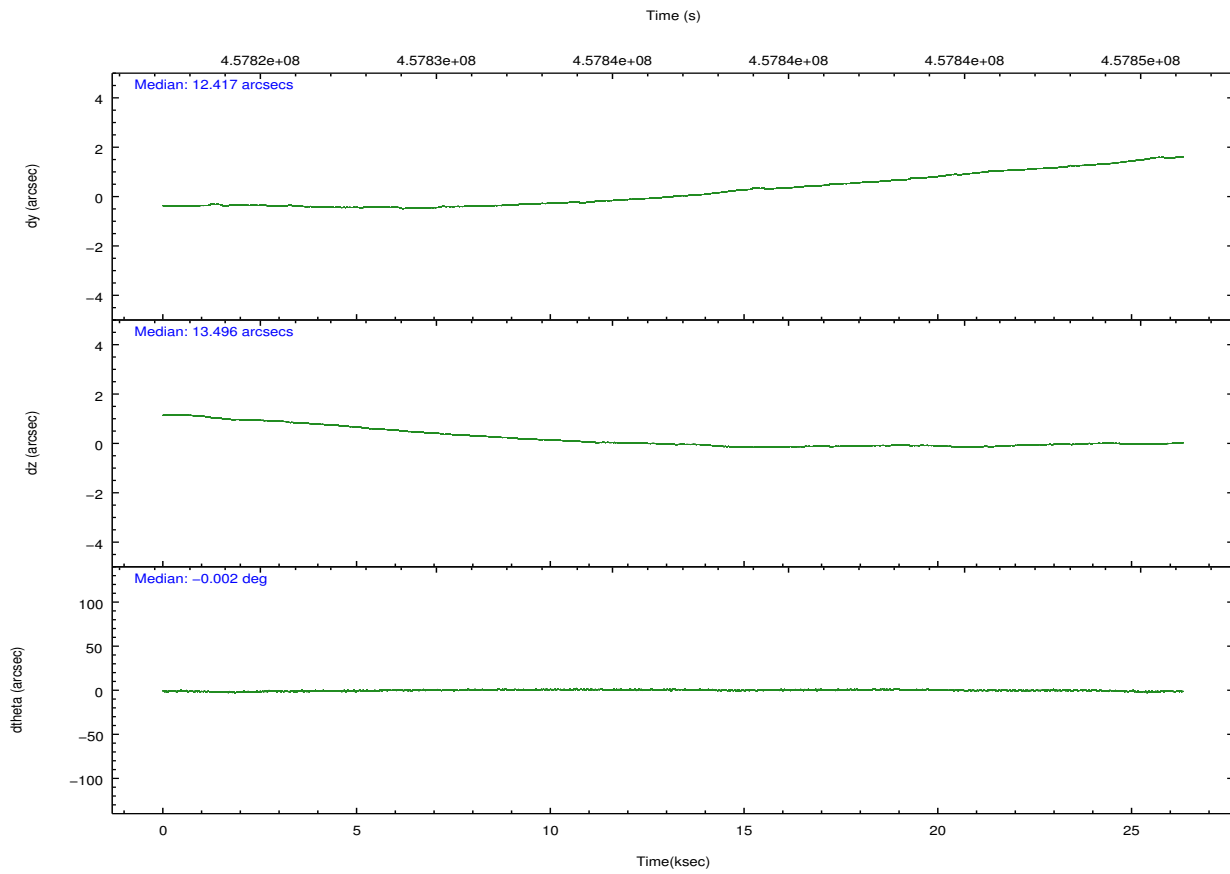
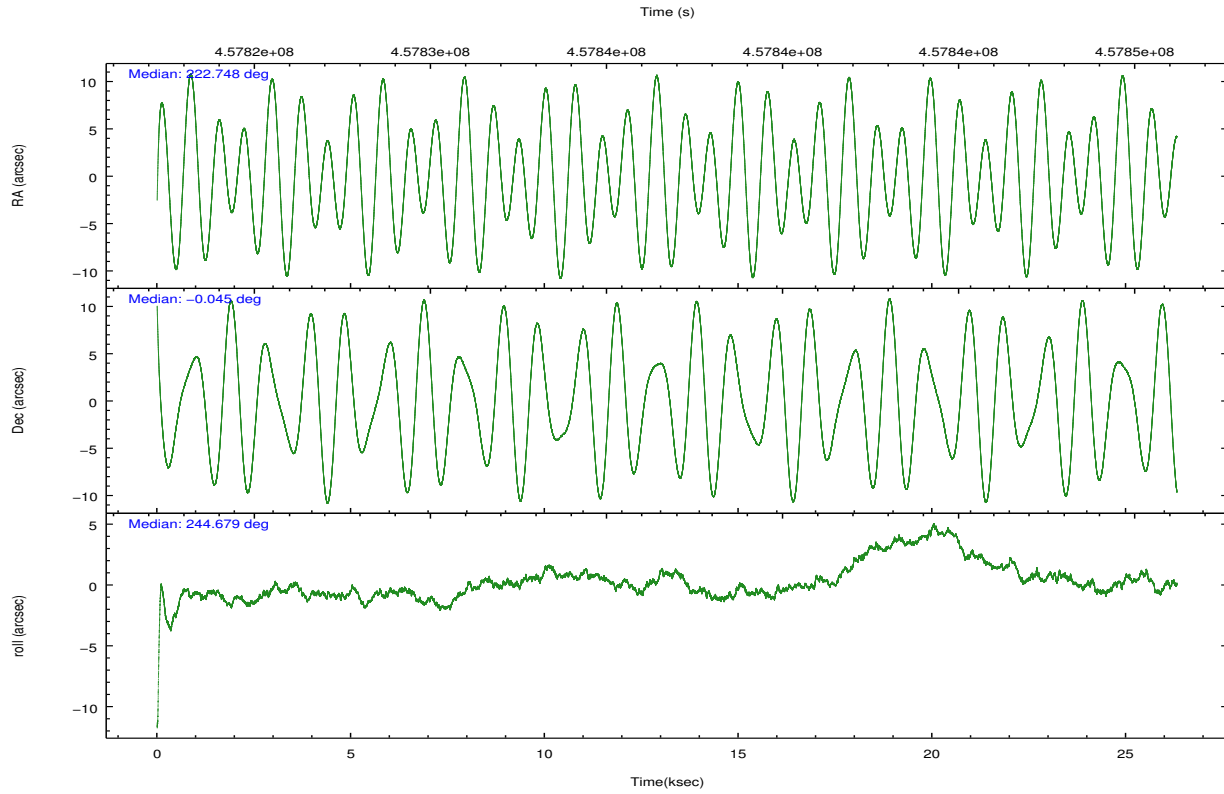
	ccd 0	ccd 1	ccd 2	ccd 3	ccd 7
grade 0 events	6050	6311	6252	6128	7537
	4%	5%	4%	4%	4%
grade 1 events	80	97	90	75	206
	0%	0%	0%	0%	0%
grade 2 events	4108	3918	3892	3470	15814
	3%	3%	2%	2%	10%
grade 3 events	1640	1748	1531	1617	6598
	1%	1%	1%	1%	4%
grade 4 events	1579	1746	1681	1604	6565
	1%	1%	1%	1%	4%
grade 5 events	5196	5513	4777	5896	16365
	4%	4%	3%	4%	10%
grade 6 events	3252	3559	3102	3084	37547
	2%	2%	2%	2%	24%
grade 7 events	103287	100138	113138	106273	62941
	82%	81%	84%	82%	40%

2.2 Compared Parameters

Parameter	Planned	Actual	Parameter	Planned	Actual
Instrument	ACIS	ACIS	Obspar format version number	7	7
Detector	ACIS-01237	ACIS-01237	Obspar file type	PREDICTED	ACTUAL
Grating	NONE	NONE	Obspar update status	NONE	UPDATED
Data mode	VFAINT	VFAINT	CCD I0 on	Y	Y
Observation mode	POINTING	POINTING	CCD I1 on	Y	Y
[deg] Pointing RA	222.745266	222.7476279381978	CCD I2 on	Y	Y
[deg] Pointing Dec	-0.018105	-0.04550682623854617	CCD I3 on	Y	Y
[deg] Pointing Roll	244.473020	244.6817046409981	CCD S0 on	N	N
[mm] SIM focus pos	-0.782348	-0.7809083437167272	CCD S1 on	N	N
[mm] SIM defocus	0	0.001439871863259334	CCD S2 on	N	N
[mm] SIM translation stage pos	-233.592463	-233.5874344608287	CCD S3 on	O1	Y
[mm] SIM translation stage offset	0	-0.005018542100998502	CCD S4 on	N	N
[s] Observation start time (MET)	457823863.184000	457822707.9317	CCD S5 on	N	N
Observation start date	2012-07-04T21:16:36	2012-07-04T20:58:27	Number of optional ACIS chips dropped	0	0
[s] Observation end time (MET)	457849878.184000	457850114.89566	On-chip summing requested	N	N
Observation end date	2012-07-05T04:30:11	2012-07-05T04:35:14	Subarray requested	NONE	NONE
Read mode	TIMED	TIMED	Alternating exposures requested	N	N
			[s] Primary exposure time	0.000000	3.1

2.3 Aspect



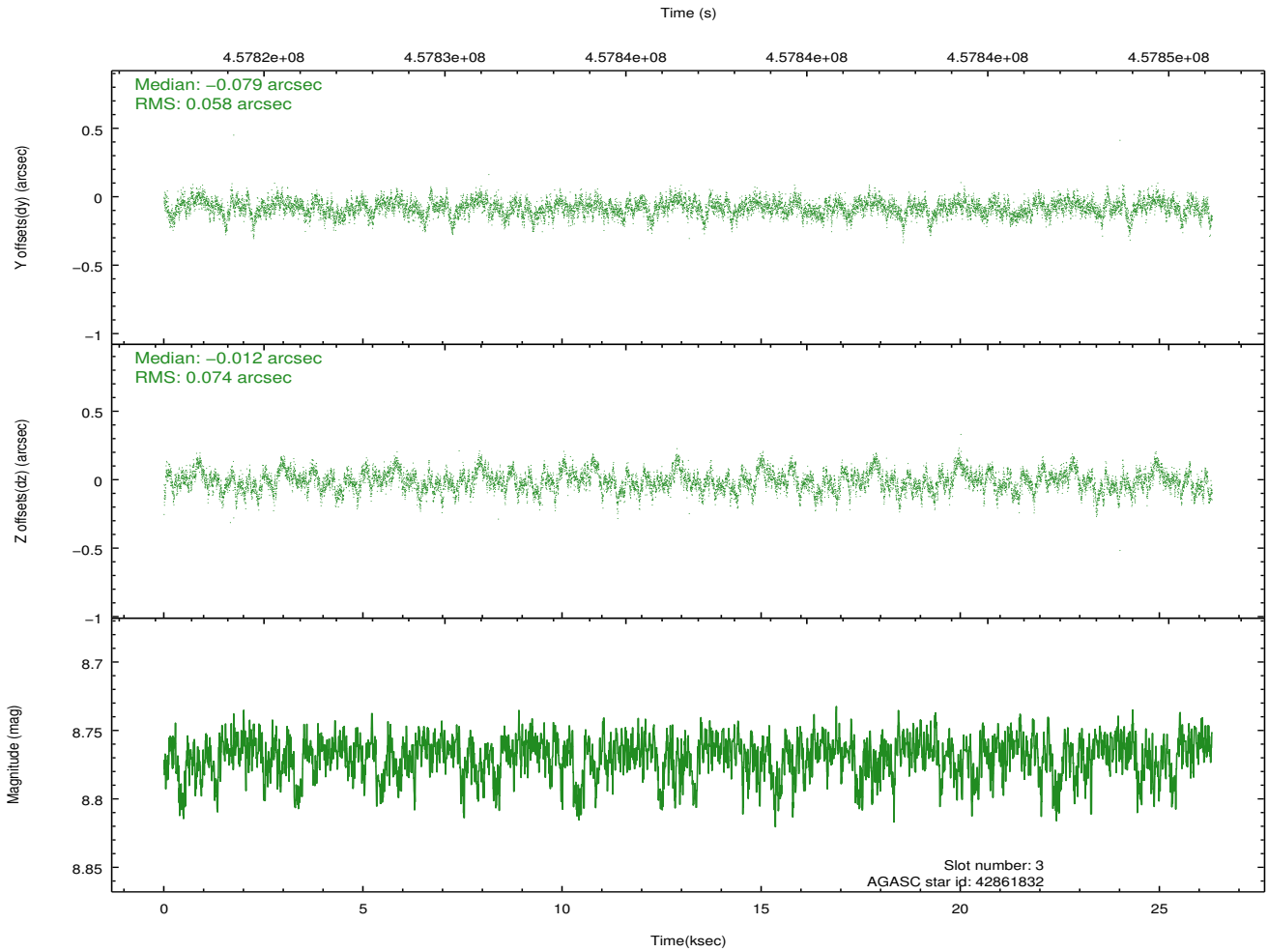
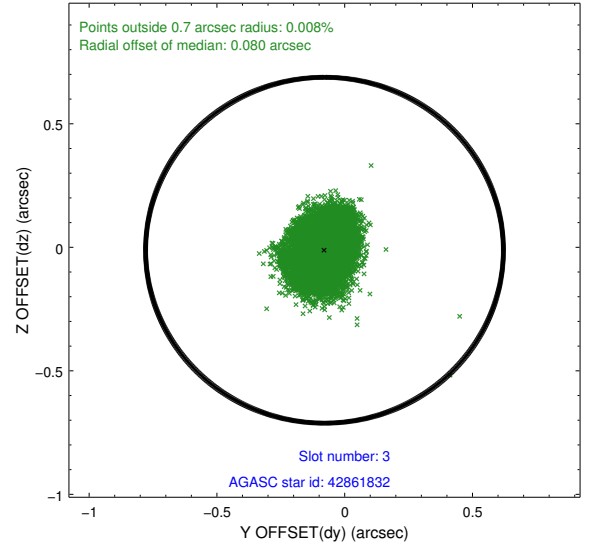
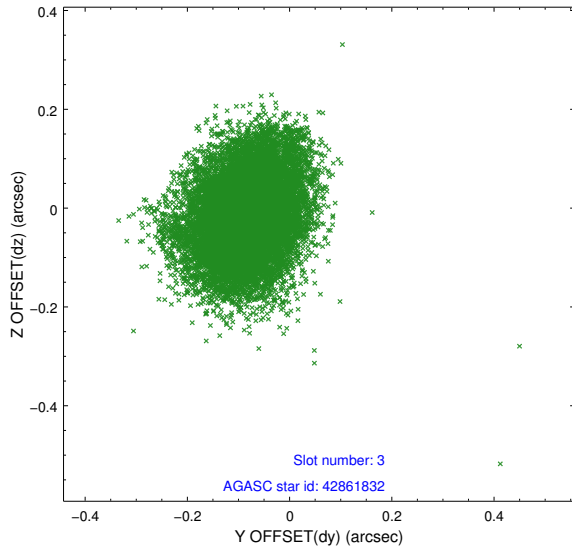


Slot Statistics

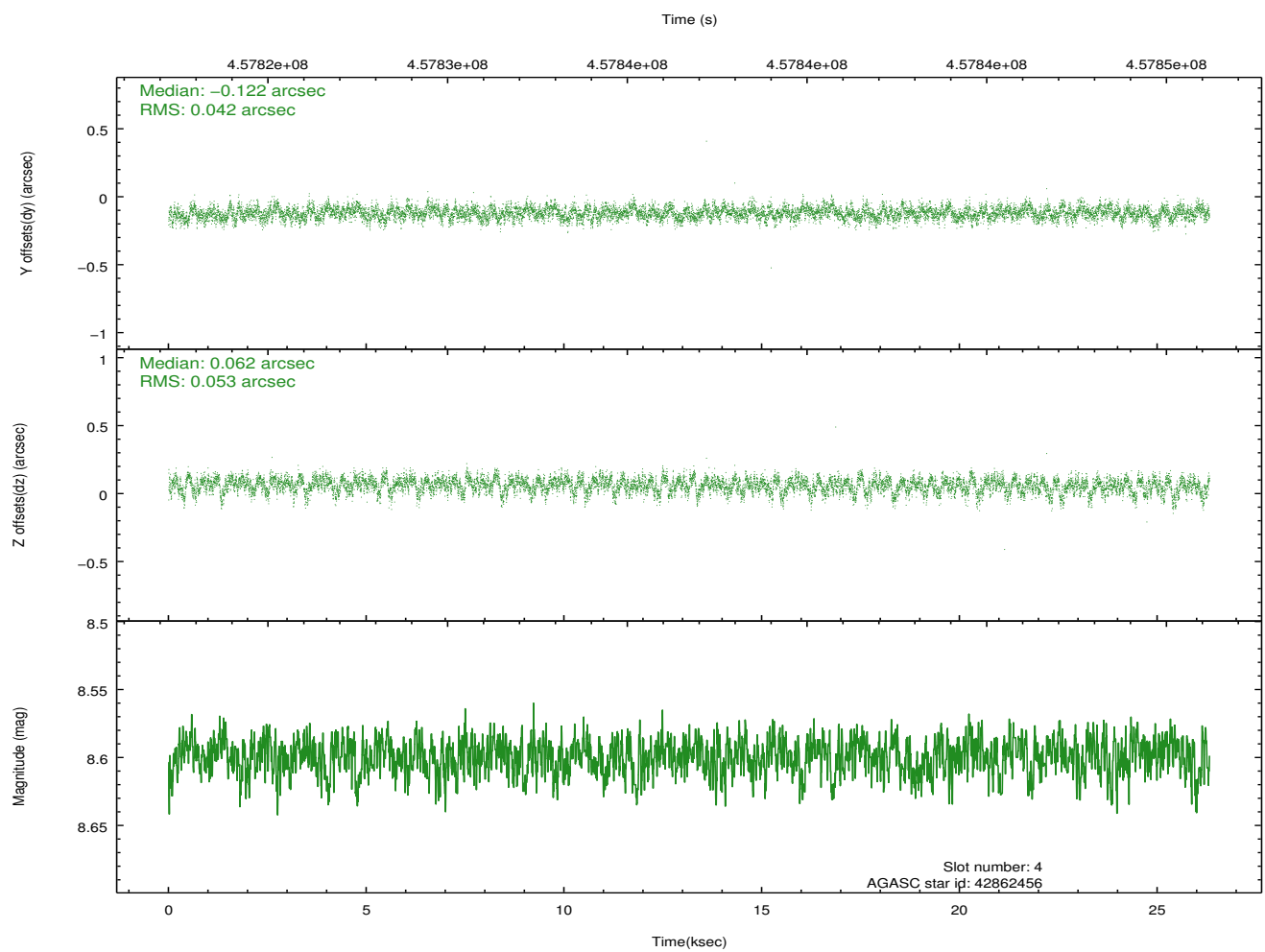
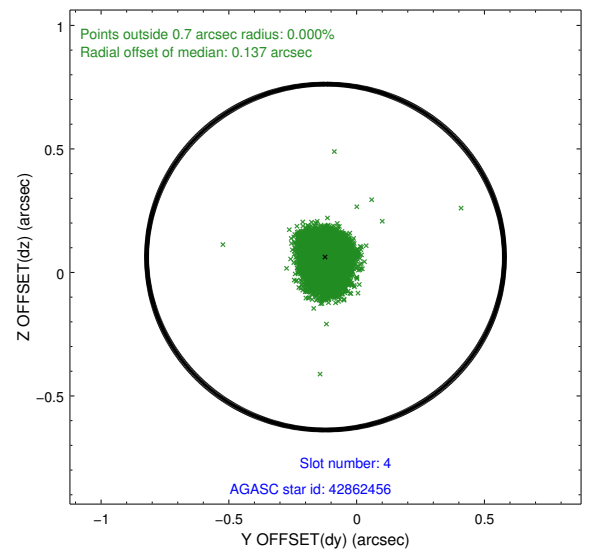
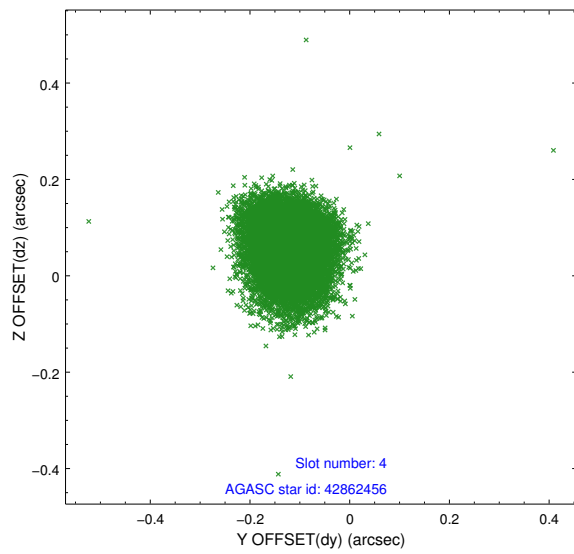
slot	status	id	mag	n_pts	med_dy	med_dz	dr1	dr2	ra	dec	mean_y	mean_z
0	FID	ACIS-I-1	7.01	6418	0.046	0.009	0.013	0.018	0.000000	0.000000	926.93	-837.25
1	FID	ACIS-I-5	7.00	6419	-0.184	0.064	0.017	0.031	0.000000	0.000000	-1821.37	1060.21
2	FID	ACIS-I-6	7.01	6419	0.049	-0.005	0.016	0.027	0.000000	0.000000	392.34	1704.78
3	GUIDE	42861832	8.77	12832	-0.079	-0.012	0.100	0.166	223.127411	0.110424	-1006.72	1043.33
4	GUIDE	42862456	8.60	12834	-0.122	0.062	0.071	0.116	223.153805	0.017804	-750.06	1271.53
5	GUIDE	42862688	8.50	12832	-0.058	-0.011	0.084	0.138	222.786006	0.556783	-1930.28	-759.72
6	GUIDE	653525192	7.90	12835	0.067	0.022	0.063	0.102	222.513730	-0.005578	318.80	-771.09
7	GUIDE	653525608	8.68	12831	0.192	-0.059	0.086	0.137	222.704311	-0.557503	1816.30	704.08

2.4 Star Slots

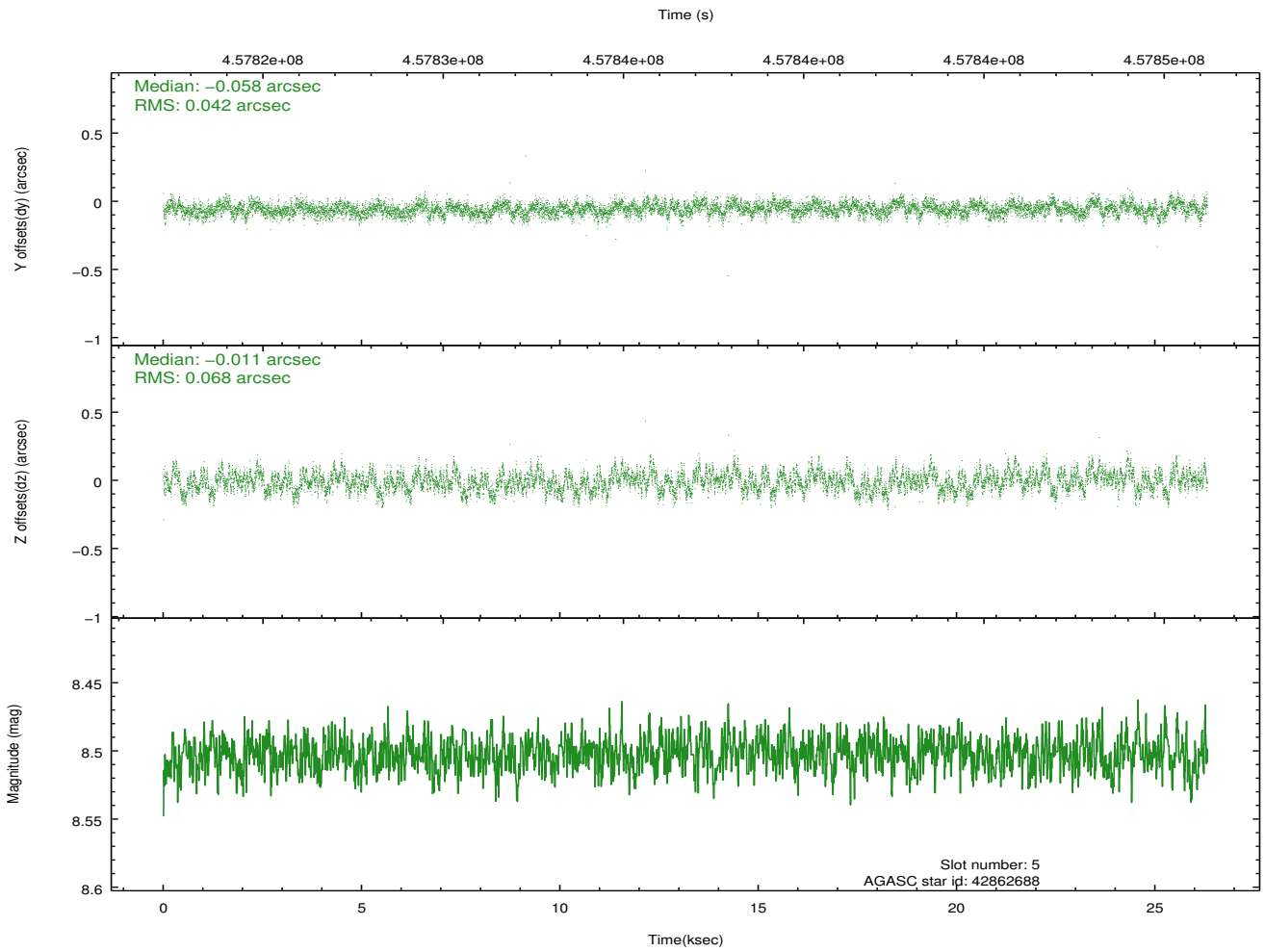
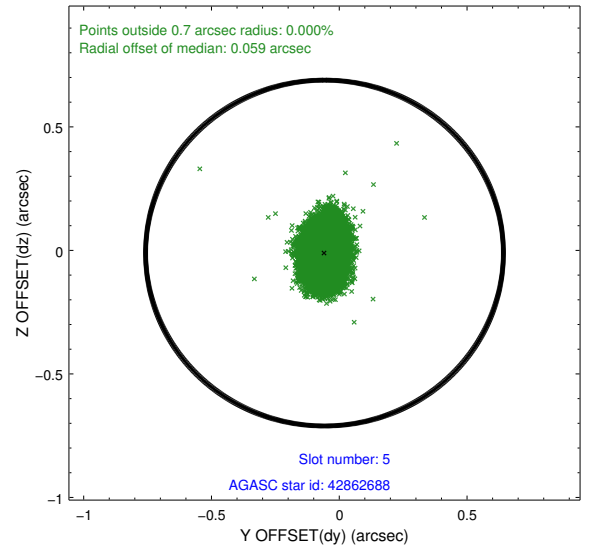
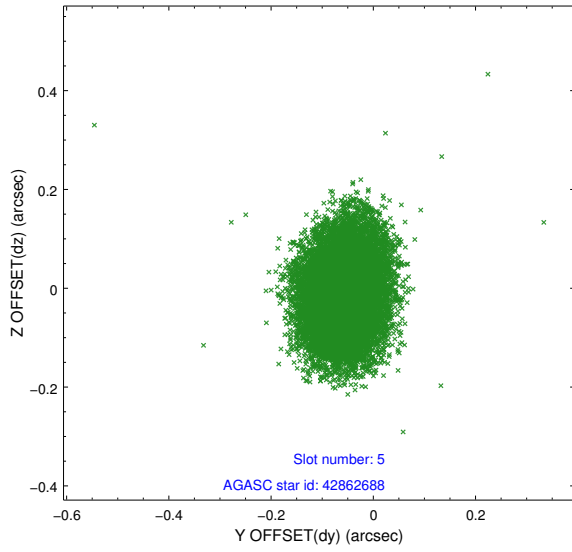
2.4.1 Slot 3



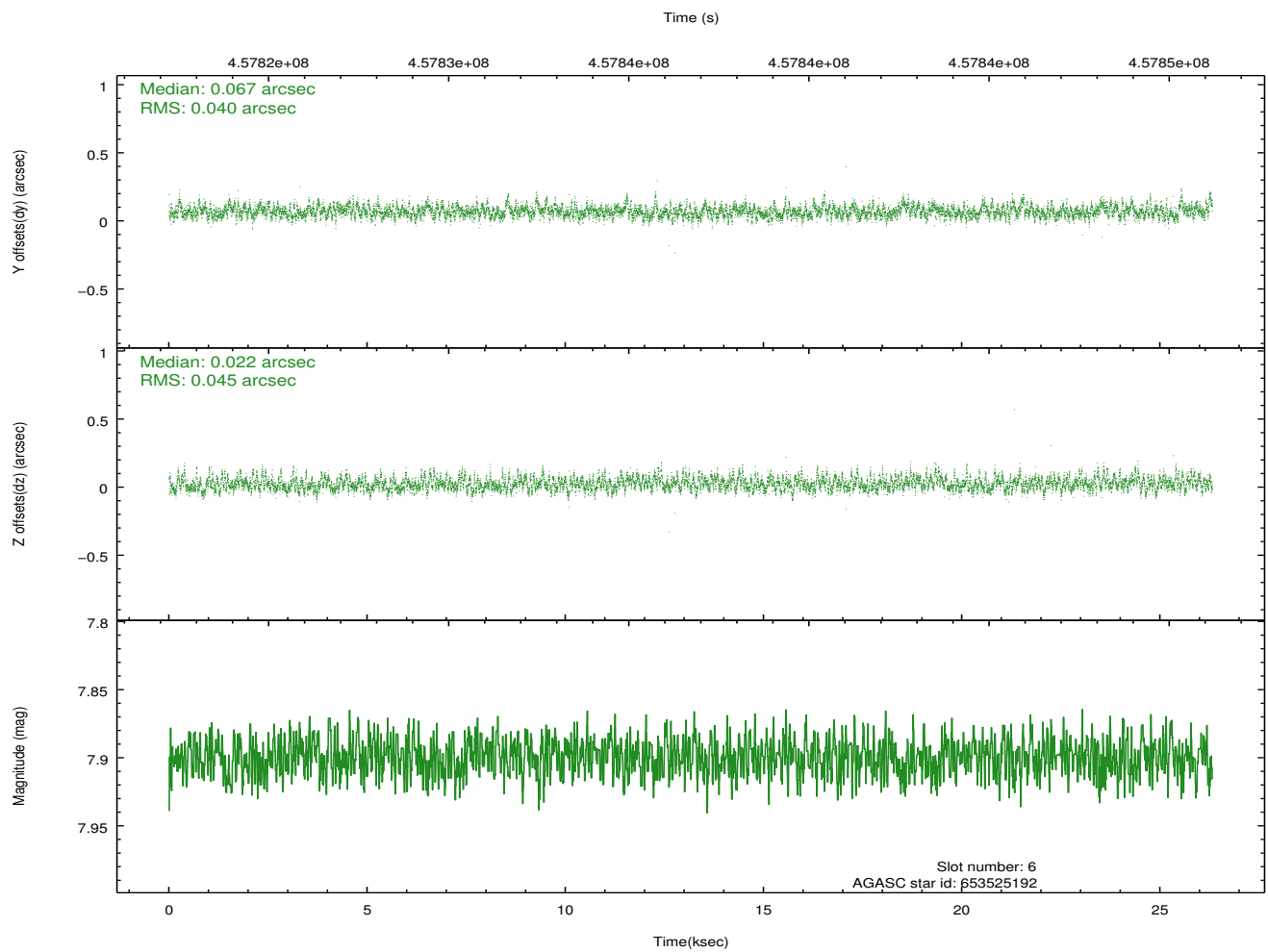
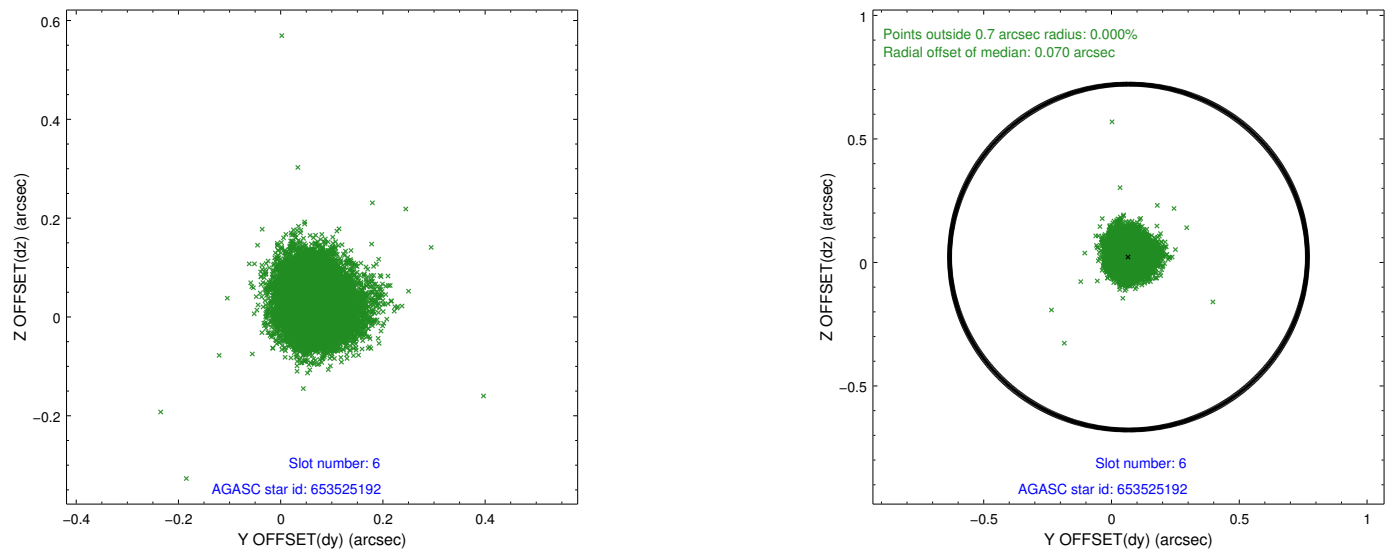
2.4.2 Slot 4



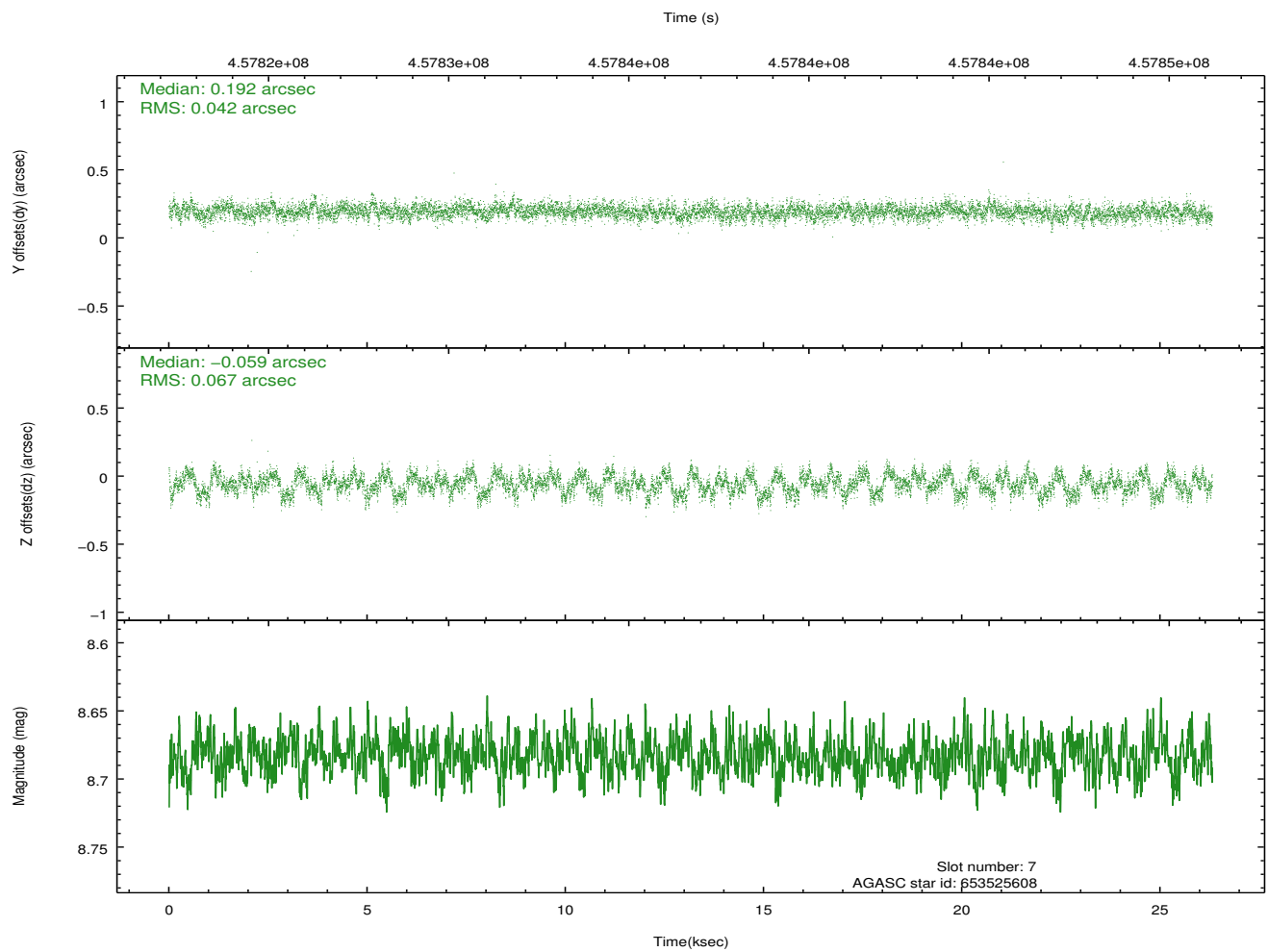
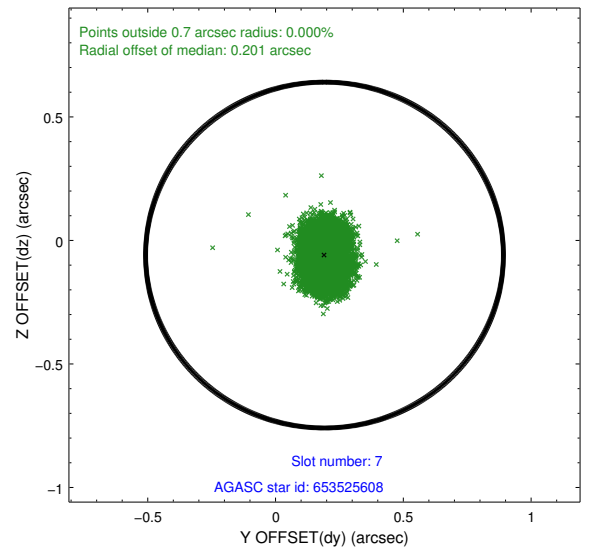
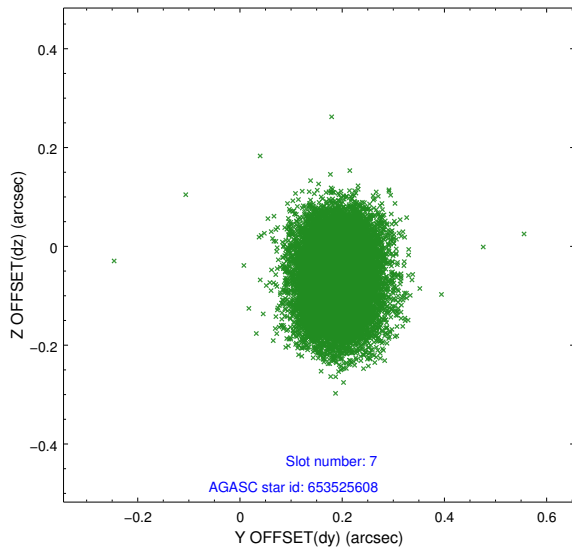
2.4.3 Slot 5



2.4.4 Slot 6

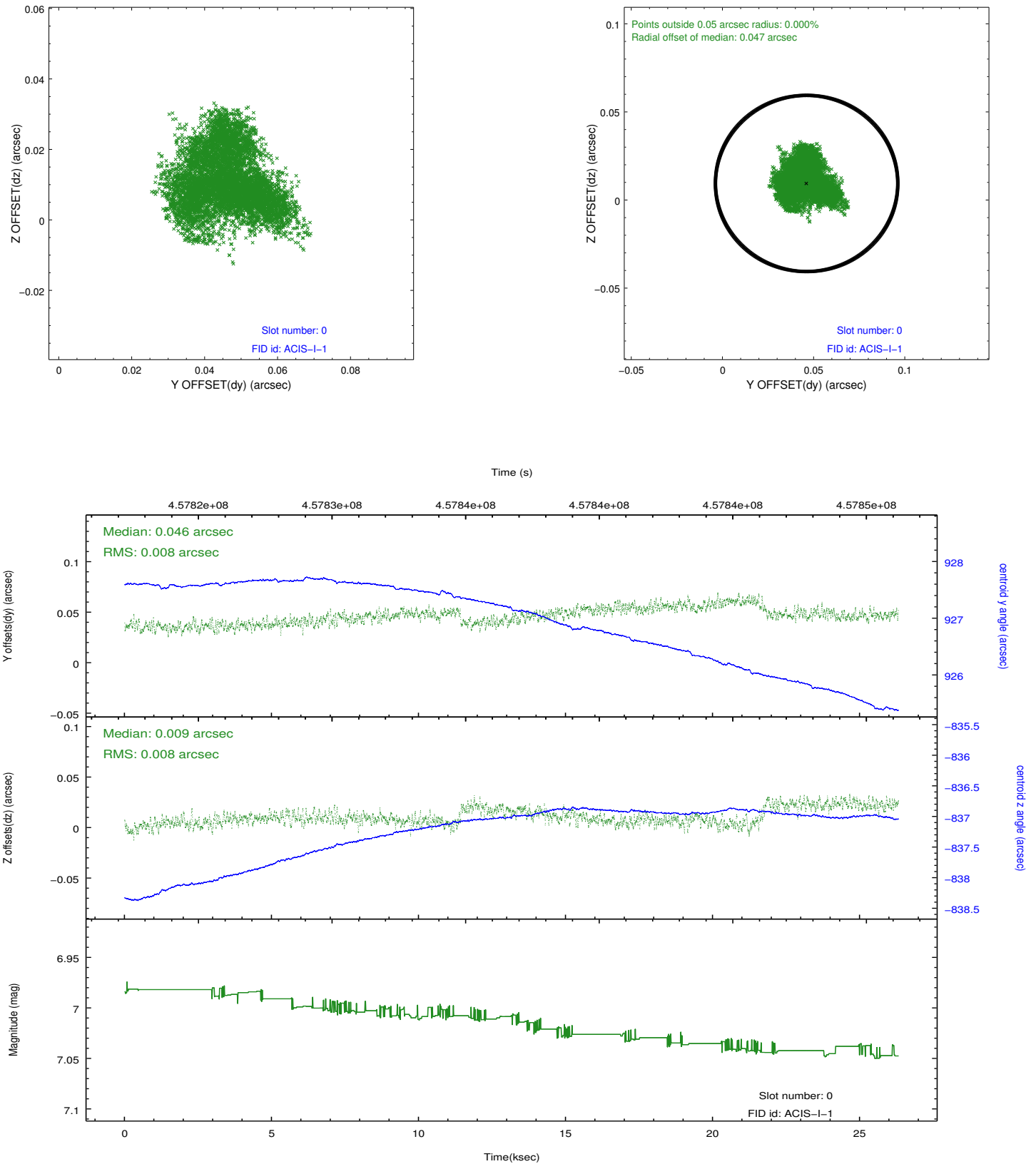


2.4.5 Slot 7

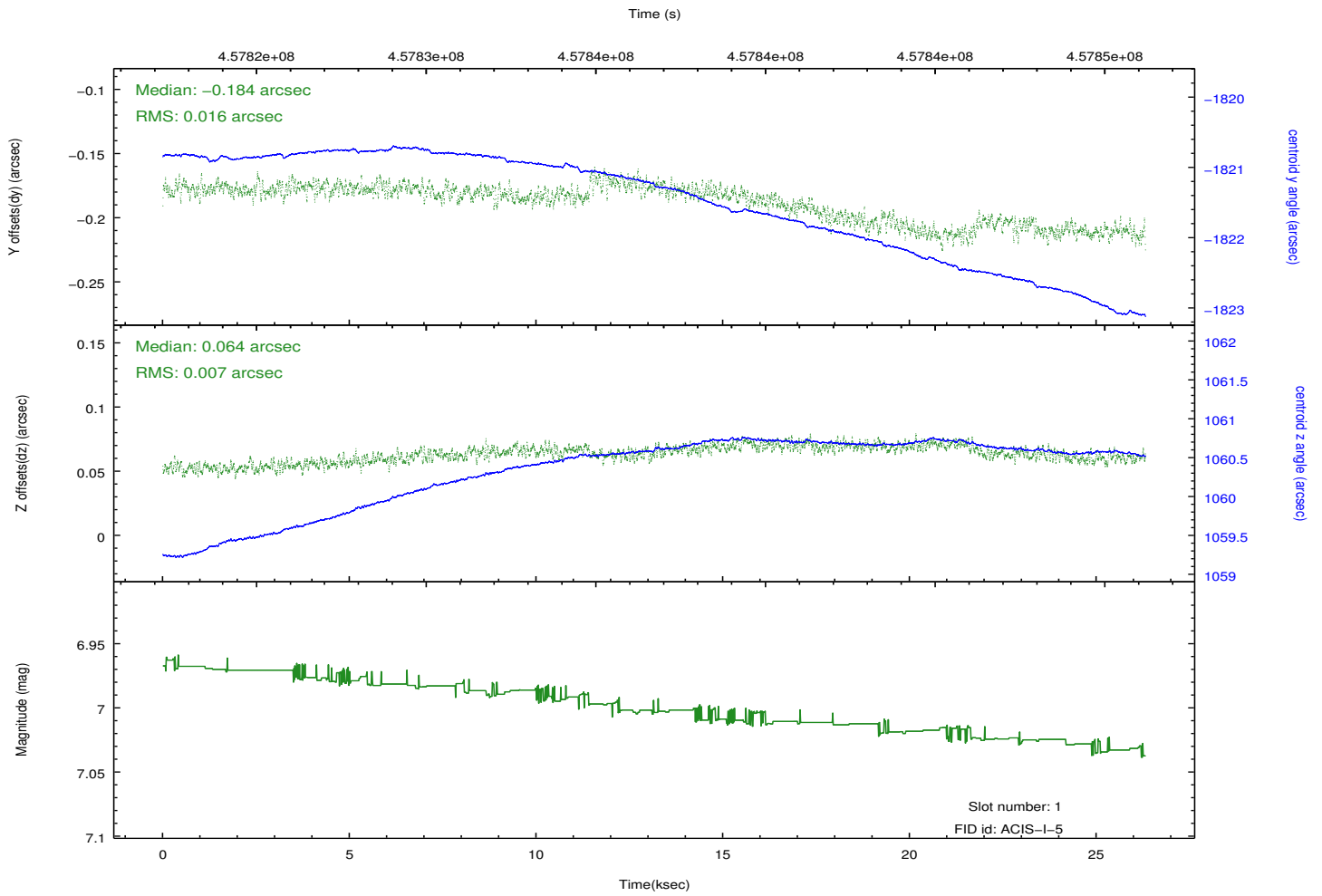
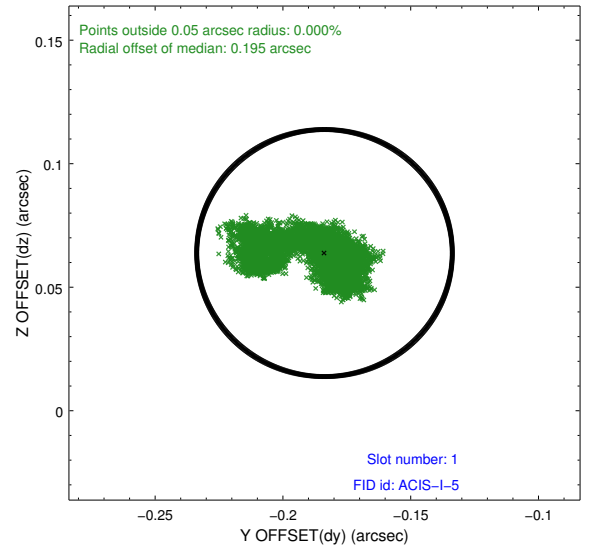
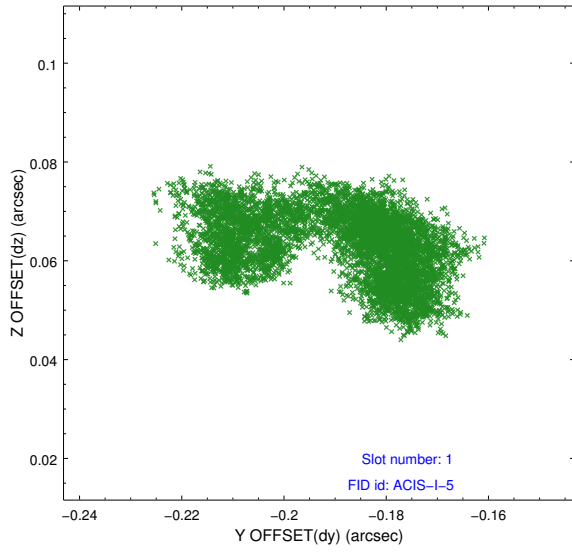


2.5 FID Slots

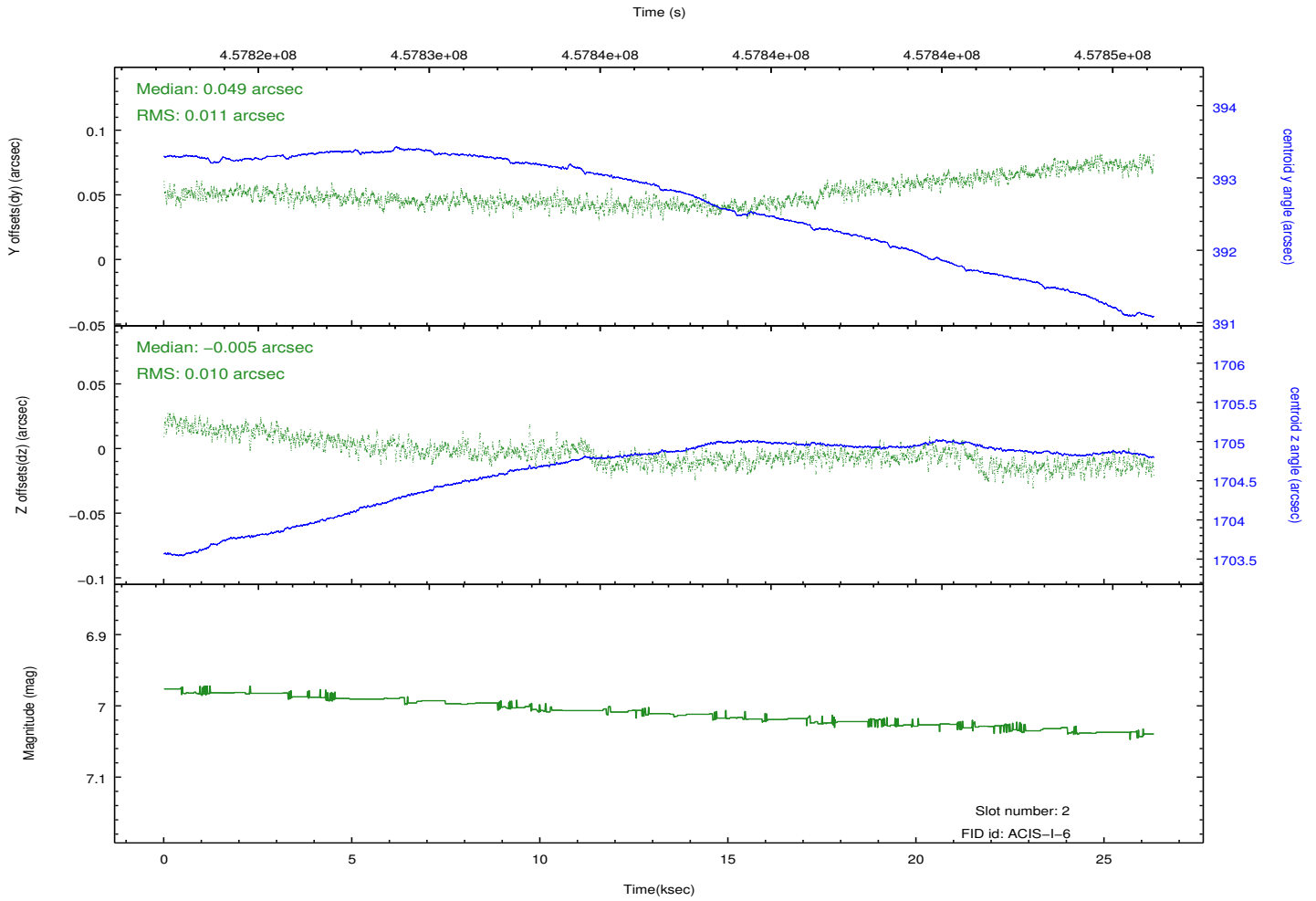
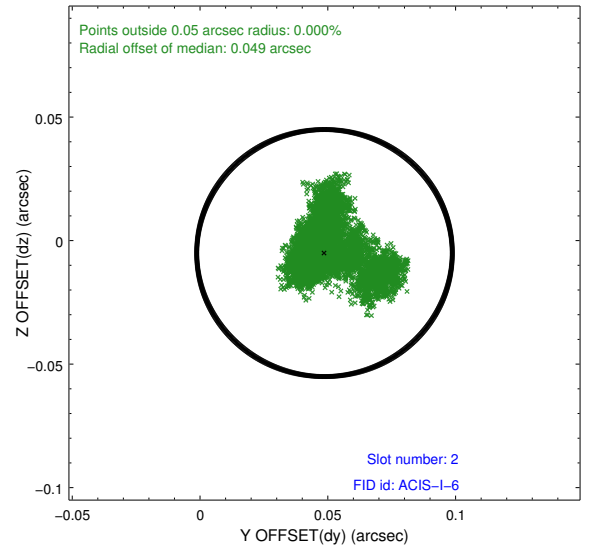
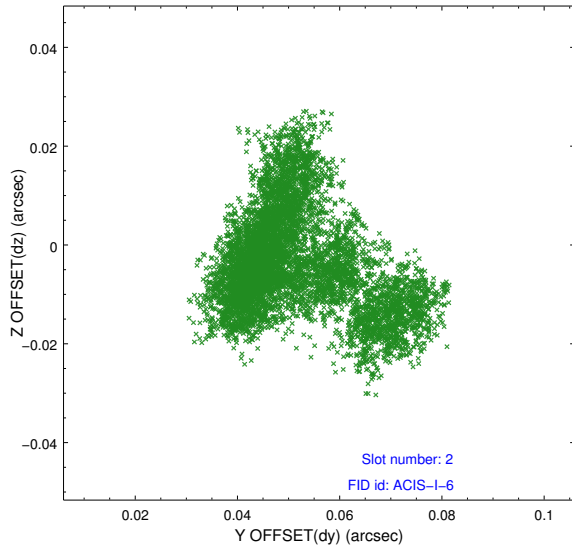
2.5.1 Slot 0



2.5.2 Slot 1



2.5.3 Slot 2



A Summary

A.1 Status

V&V Scientist	Jen Lauer
V&V Date (YYYY-MM-DD)	2012.07.06
V&V Edition	1
V&V Disposition and Status	OK
V&V Charge Time	26.082016222537

A.2 Comments