

V&V Reference Report

L2 ASCDS Version : 8.4.5

Observation 14018 - L2 Version 2
Chandra X-Ray Center

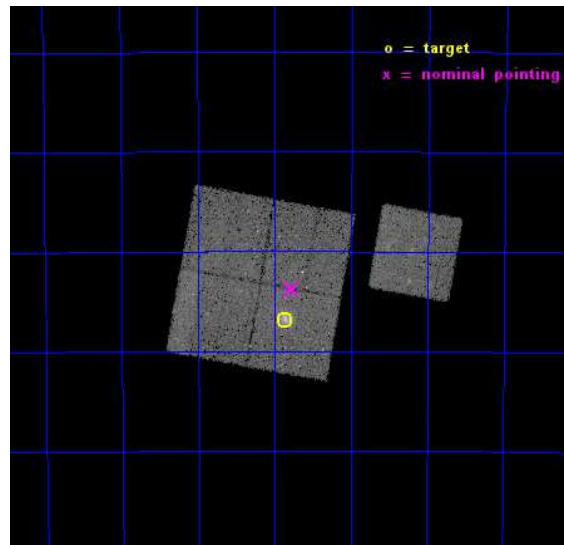
L2 Processing Date : Nov 26 2014

Contents

1	Front	2
2	OBI	3
2.1	OBI	3
2.1.1	Images	3
2.1.2	Bias	3
2.1.3	Parameters	4
2.1.4	Events	4
2.2	Compared Parameters	5
2.3	Aspect	6
2.4	Star Slots	9
2.4.1	Slot 3	9
2.4.2	Slot 4	10
2.4.3	Slot 5	11
2.4.4	Slot 6	12
2.4.5	Slot 7	13
2.5	FID Slots	14
2.5.1	Slot 0	14
2.5.2	Slot 1	15
2.5.3	Slot 2	16
A	Summary	17
A.1	Status	17
A.2	Comments	17

1 Front

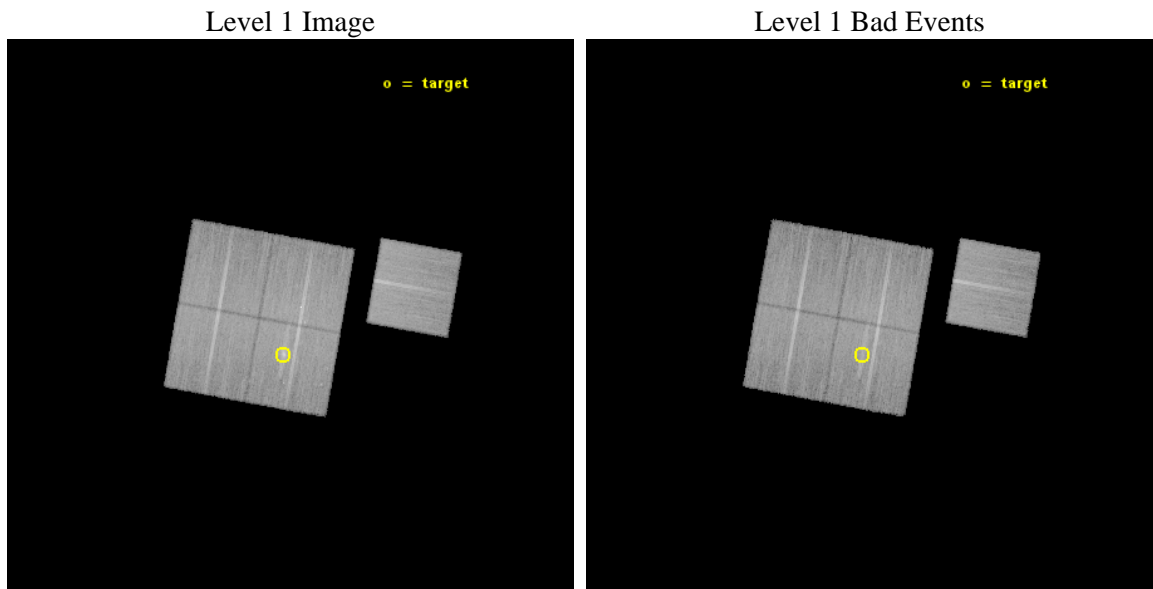
seq_num	801197	Sequence number
obs_id	14018	Observation id
title	A DETAILED CHANDRA/HST STUDY OF THE FIRST z approx 1 CLUSTER BLINDLY DISCOVERED IN THE PLANCK ALL SKY SURVEY	Proposal title
observer	Dr. Pasquale Mazzotta	Principal investigator
object	PLCKG266.6-27.3	Source name
dtcycle	0	
cycle	P	events from which exps? Prim/Second/Both
ra_targ	93.966667	Observer's specified target RA [deg]
dec_targ	-57.781	Observer's specified target Dec [deg]
ra_nom	93.945316025358	Nominal RA [deg]
dec_nom	-57.730343632918	Nominal Dec [deg]
roll_nom	100.19062504896	Nominal Roll [deg]
revision	2	Processing version of data
ontime	36071.436376214	Sum of GTIs [s]
livetime	35600.136504554	Livetime [s]
ontime0	36084.000277519	Sum of GTIs [s]
ontime1	36084.000277519	Sum of GTIs [s]
ontime2	36084.000277519	Sum of GTIs [s]
ontime3	36071.436376214	Sum of GTIs [s]
ontime6	36080.85930717	Sum of GTIs [s]
l2events	101941	Number of level 2 events



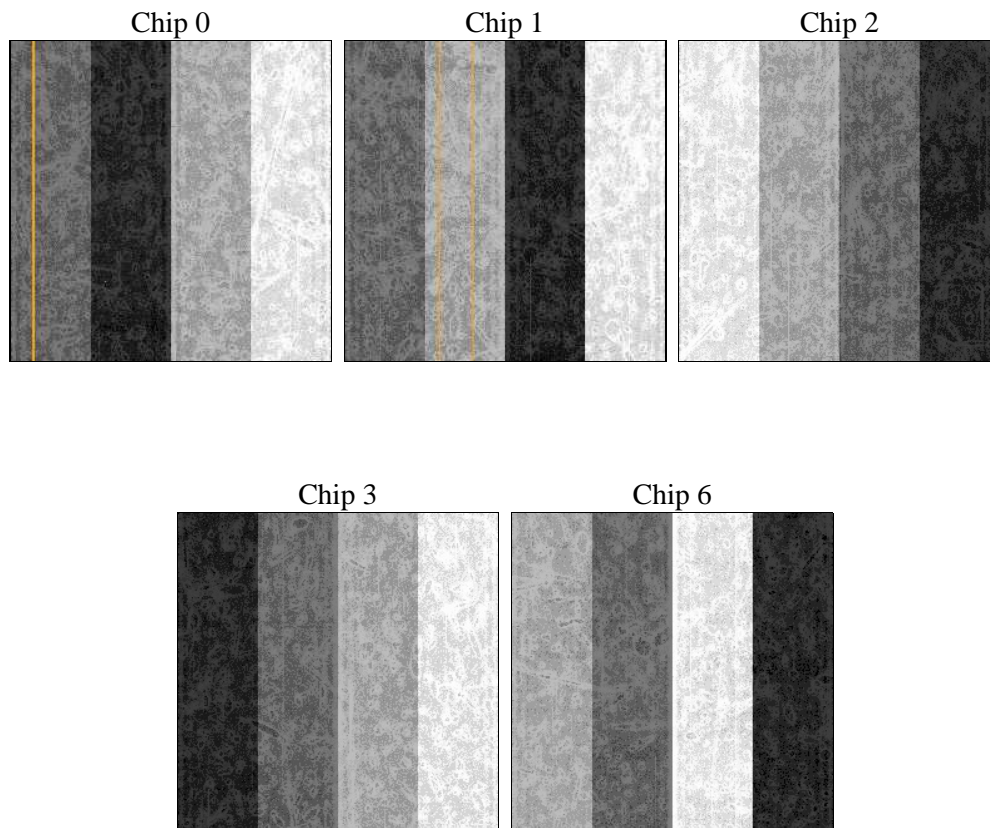
2 OBI

2.1 OBI

2.1.1 Images



2.1.2 Bias



2.1.3 Parameters

obi_num	1	Obi number	sched_exp_time	36000.000000	[s] Scheduled observation exposure time
ascdsver	10.3	Processing system revision	ontime	36071.436376214	Sum of GTIs [s]
caldbver	4.6.4	 	ontime0	36084.000277519	Sum of GTIs [s]
date	2014-11-27T03:54:34	Date and time of file creation	ontime1	36084.000277519	Sum of GTIs [s]
revision	2	Processing version of data	ontime2	36084.000277519	Sum of GTIs [s]
			ontime3	36071.436376214	Sum of GTIs [s]
			ontime6	36080.85930717	Sum of GTIs [s]
			l1events	920789	Number of level 1 events

2.1.4 Events

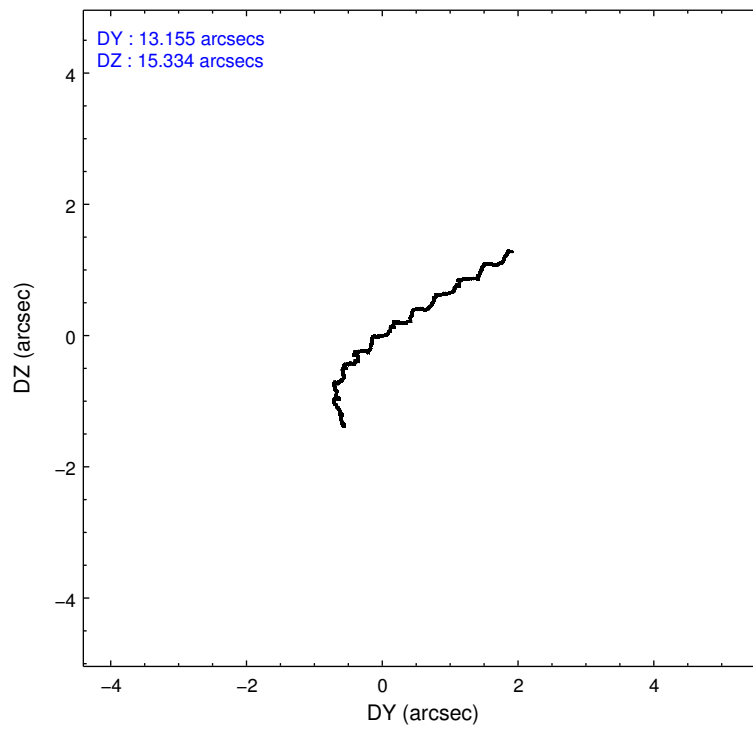
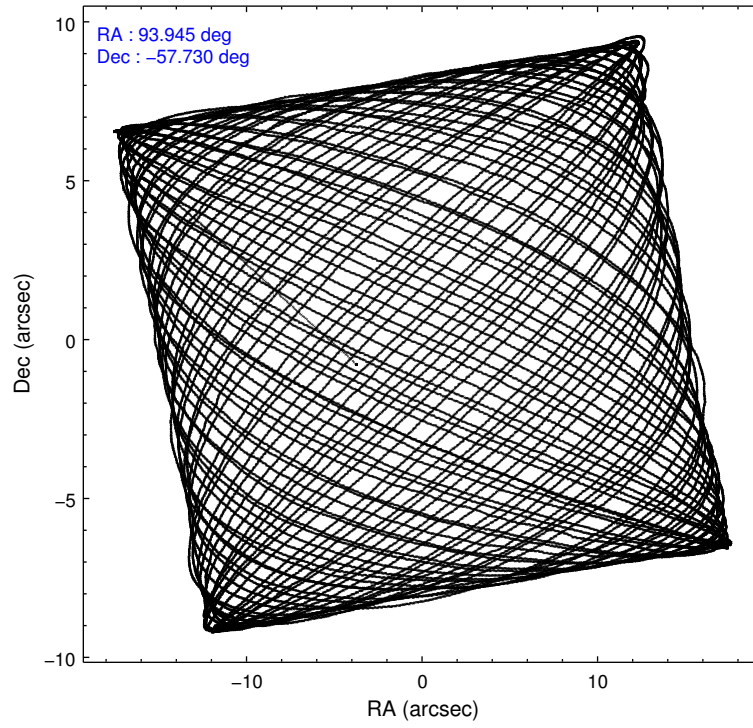
	ccd 0	ccd 1	ccd 2	ccd 3	ccd 6
level 1 events	170099	179312	189711	187792	193875
rejected events	147708	154787	165974	161729	170880
rejected %	86%	86%	87%	86%	88%

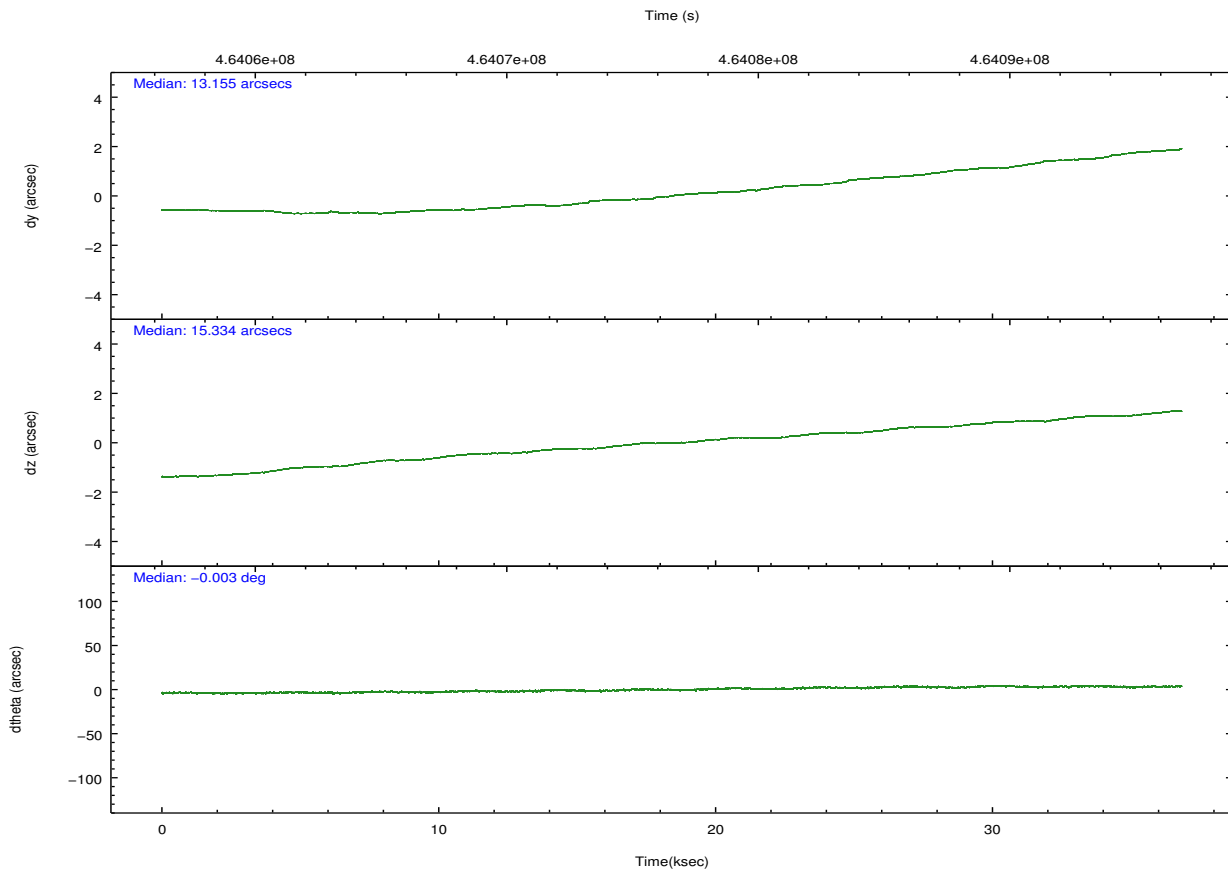
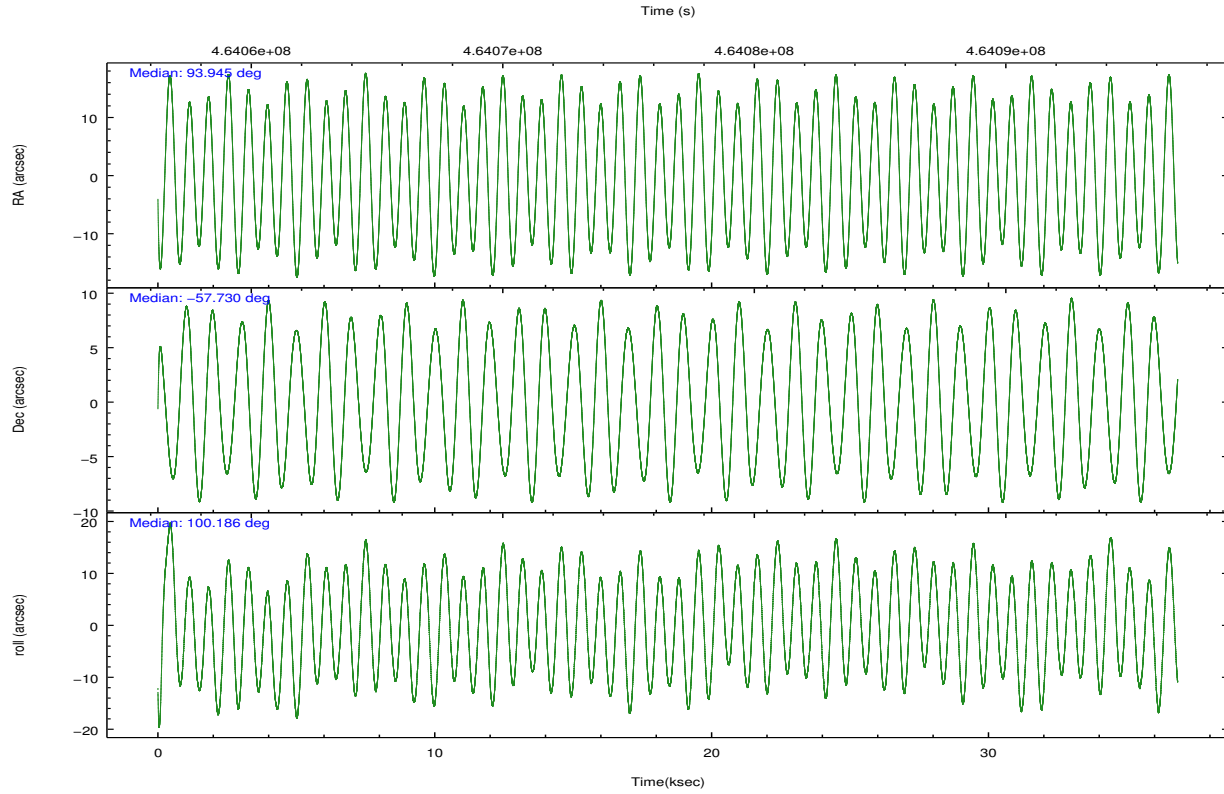
	ccd 0	ccd 1	ccd 2	ccd 3	ccd 6
grade 0 events	7845	8748	9350	11378	8338
	4%	4%	4%	6%	4%
grade 1 events	92	97	129	114	100
	0%	0%	0%	0%	0%
grade 2 events	5557	5838	5589	5230	5010
	3%	3%	2%	2%	2%
grade 3 events	2316	2391	2179	2427	2237
	1%	1%	1%	1%	1%
grade 4 events	2192	2342	2303	2393	2326
	1%	1%	1%	1%	1%
grade 5 events	8878	9537	8542	9989	9411
	5%	5%	4%	5%	4%
grade 6 events	4487	5212	4318	4638	5088
	2%	2%	2%	2%	2%
grade 7 events	138732	145147	157301	151623	161365
	81%	80%	82%	80%	83%

2.2 Compared Parameters

Parameter	Planned	Actual	Parameter	Planned	Actual
Instrument	ACIS	ACIS	Obspar format version number	7	7
Detector	ACIS-01236	ACIS-01236	Obspar file type	PREDICTED	ACTUAL
Grating	NONE	NONE	Obspar update status	NONE	UPDATED
Data mode	VFAINT	VFAINT	CCD I0 on	Y	Y
Observation mode	POINTING	POINTING	CCD I1 on	Y	Y
[deg] Pointing RA	93.978723	93.94531602535761	CCD I2 on	Y	Y
[deg] Pointing Dec	-57.751262	-57.73034363291791	CCD I3 on	Y	Y
[deg] Pointing Roll	100.010196	100.1906250489558	CCD S0 on	N	N
[mm] SIM focus pos	-0.782348	-0.7809083437167272	CCD S1 on	N	N
[mm] SIM defocus	0	0.001439871863259334	CCD S2 on	O1	Y
[mm] SIM translation stage pos	-225.842463	-225.8433433320239	CCD S3 on	N	N
[mm] SIM translation stage offset	-7.75	-7.749109670905796	CCD S4 on	N	N
[s] Observation start time (MET)	464058978.184000	464057194.91485	CCD S5 on	N	N
Observation start date	2012-09-15T01:15:11	2012-09-15T00:46:34	Number of optional ACIS chips dropped	0	0
[s] Observation end time (MET)	464094978.184000	464095806.15442	On-chip summing requested	N	N
Observation end date	2012-09-15T11:15:11	2012-09-15T11:30:06	Subarray requested	NONE	NONE
Read mode	TIMED	TIMED	Alternating exposures requested	N	N
			[s] Primary exposure time	0.000000	3.1

2.3 Aspect





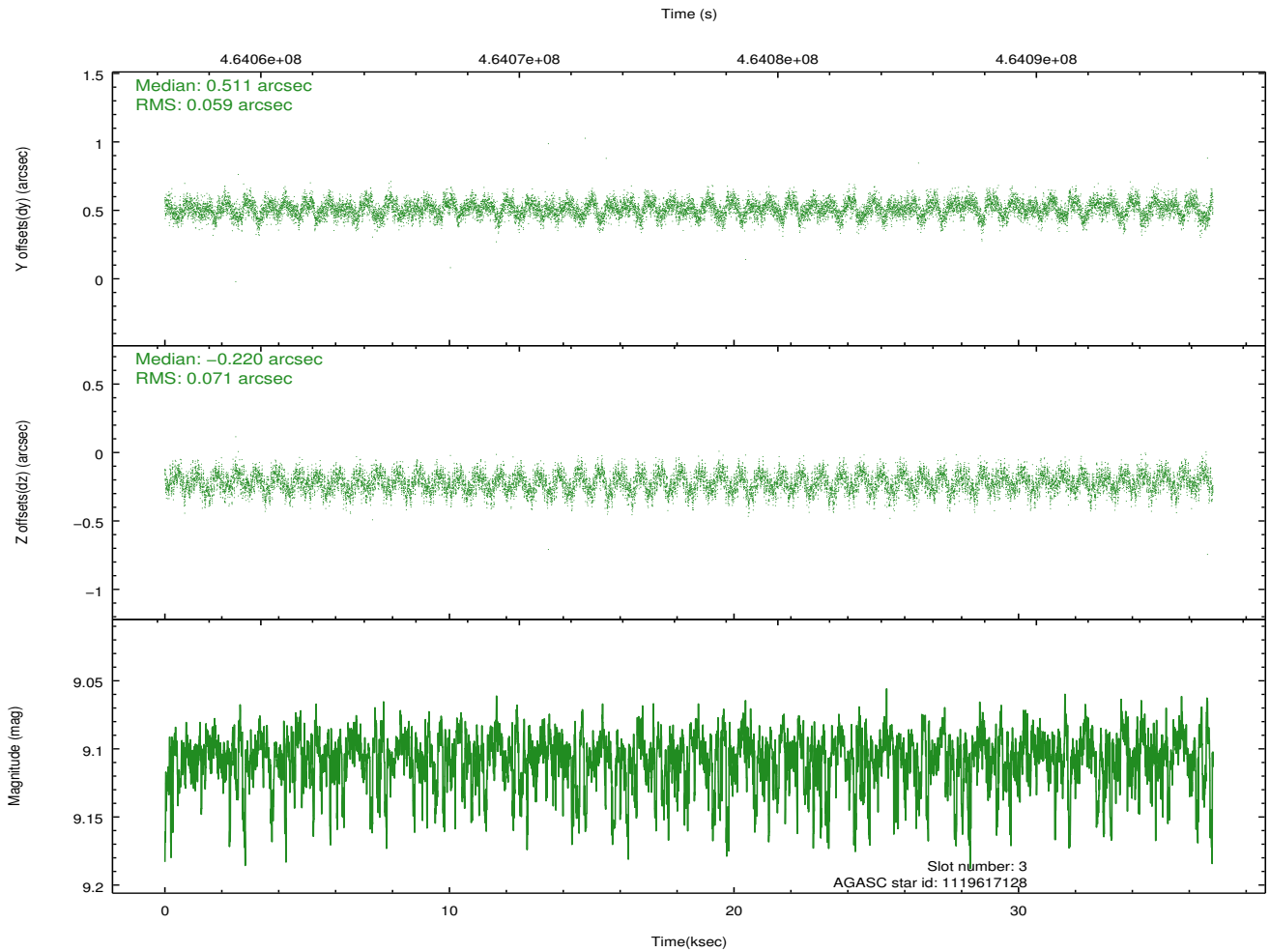
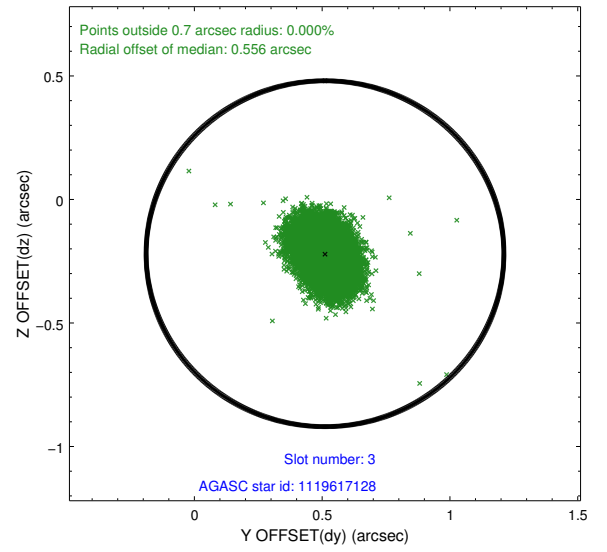
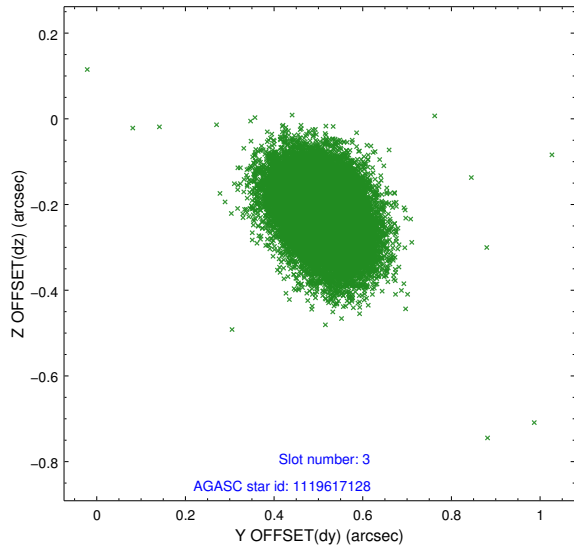
Slot Statistics

slot	status	used	id	mag	n_pts	med_dy	med_dz	dr1	dr2	ra	dec	mean_y	mean_z
0	FID		ACIS-I-1	7.05	8984	0.123	-0.099	0.032	0.043	0.000000	0.000000	926.14	-998.07
1	FID		ACIS-I-5	7.04	8984	-0.283	0.098	0.032	0.047	0.000000	0.000000	-1822.39	899.54
2	FID		ACIS-I-6	7.05	8984	0.069	0.067	0.011	0.018	0.000000	0.000000	391.55	1544.08
3	GUIDE	used	1119617128	9.11	17941	0.511	-0.220	0.098	0.157	93.986624	-58.000911	-886.75	141.34
4	GUIDE	used	1119618216	8.94	17960	-0.327	-0.102	0.109	0.167	93.911968	-57.701545	199.09	95.04
5	GUIDE	used	1119619792	9.40	17931	-0.068	-0.089	0.107	0.172	93.499770	-57.916921	-431.01	1006.23
6	GUIDE	used	1119620096	9.01	17939	0.015	0.228	0.108	0.174	94.803811	-58.054312	-1355.95	-1356.28
7	GUIDE	used	1119617976	8.00	17964	-0.133	0.180	0.073	0.116	94.543198	-57.336411	1276.28	-1338.38

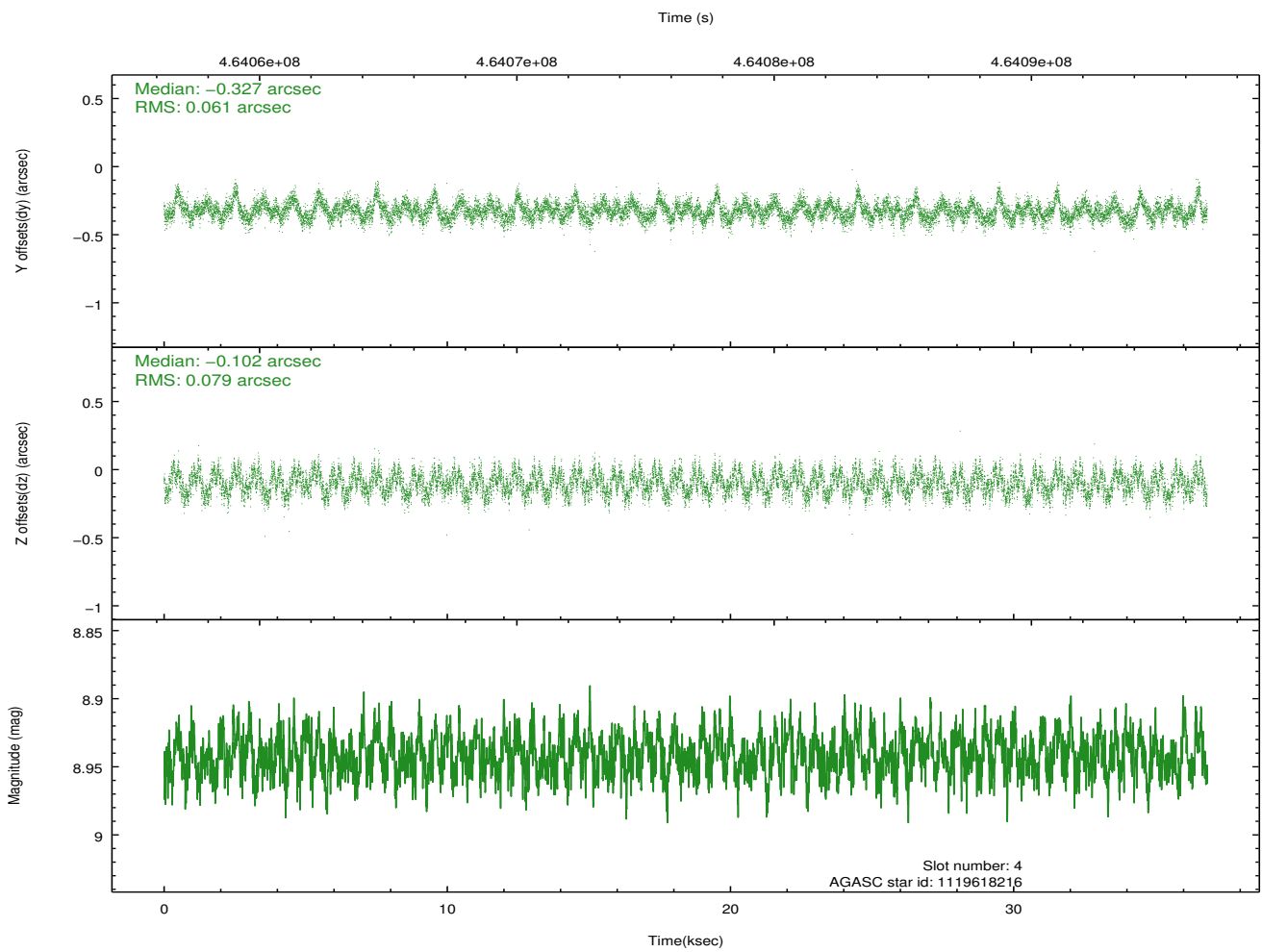
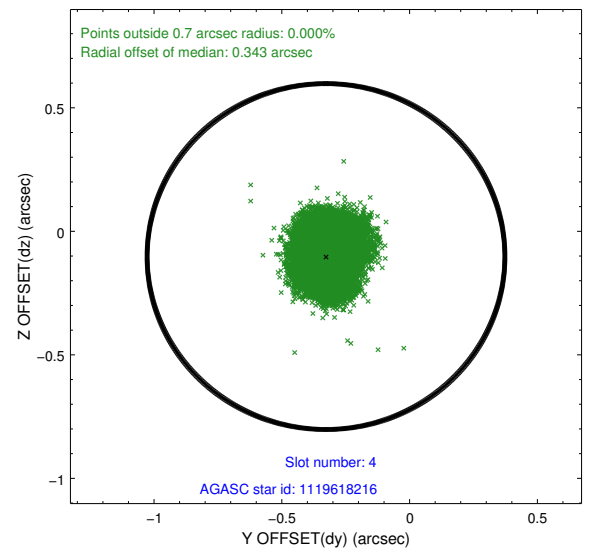
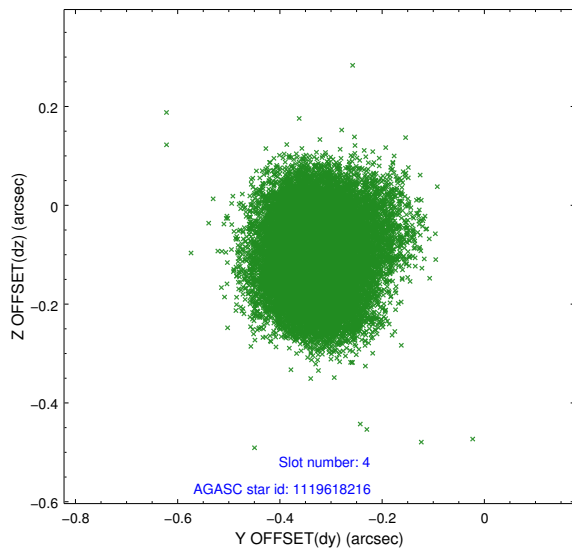
∞

2.4 Star Slots

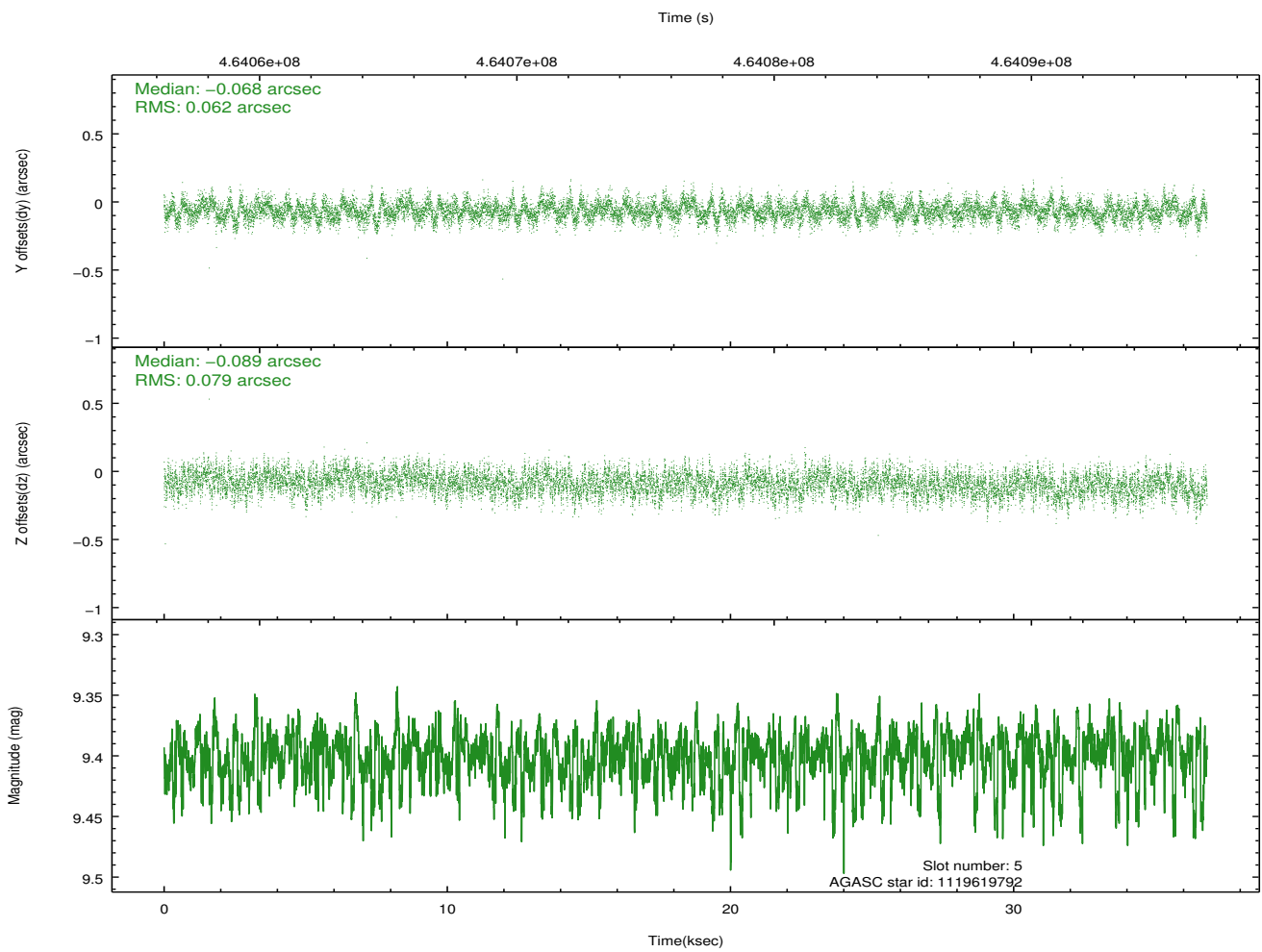
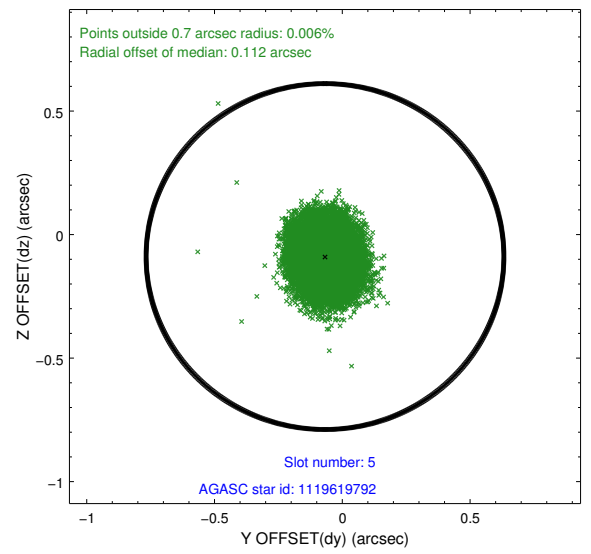
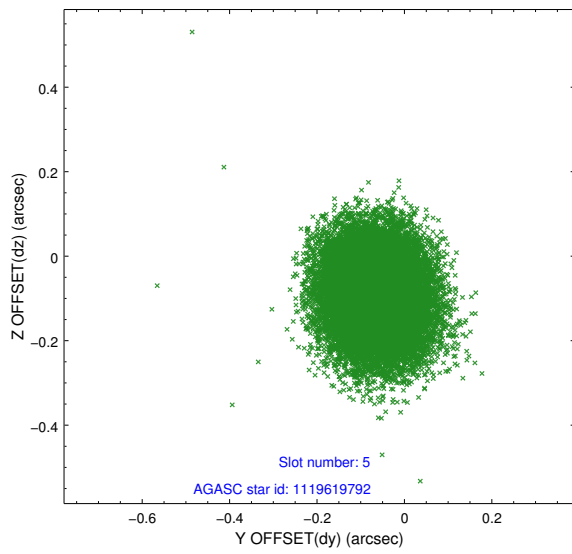
2.4.1 Slot 3



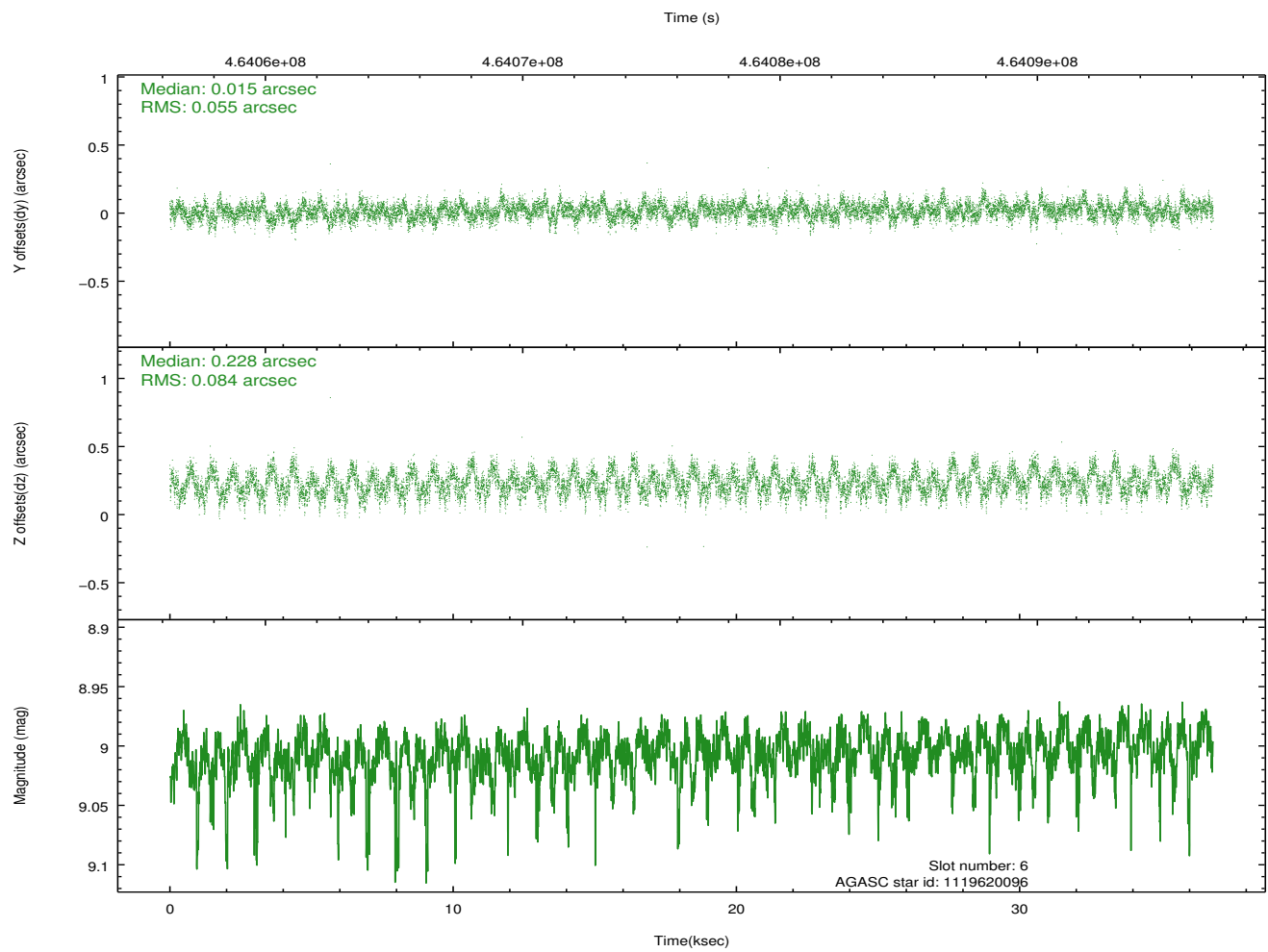
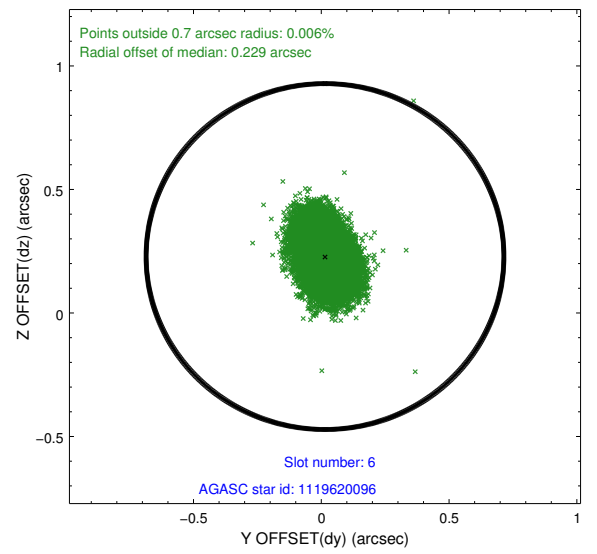
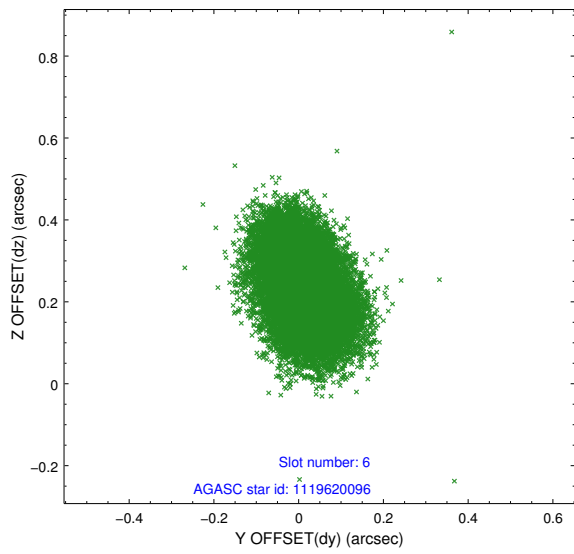
2.4.2 Slot 4



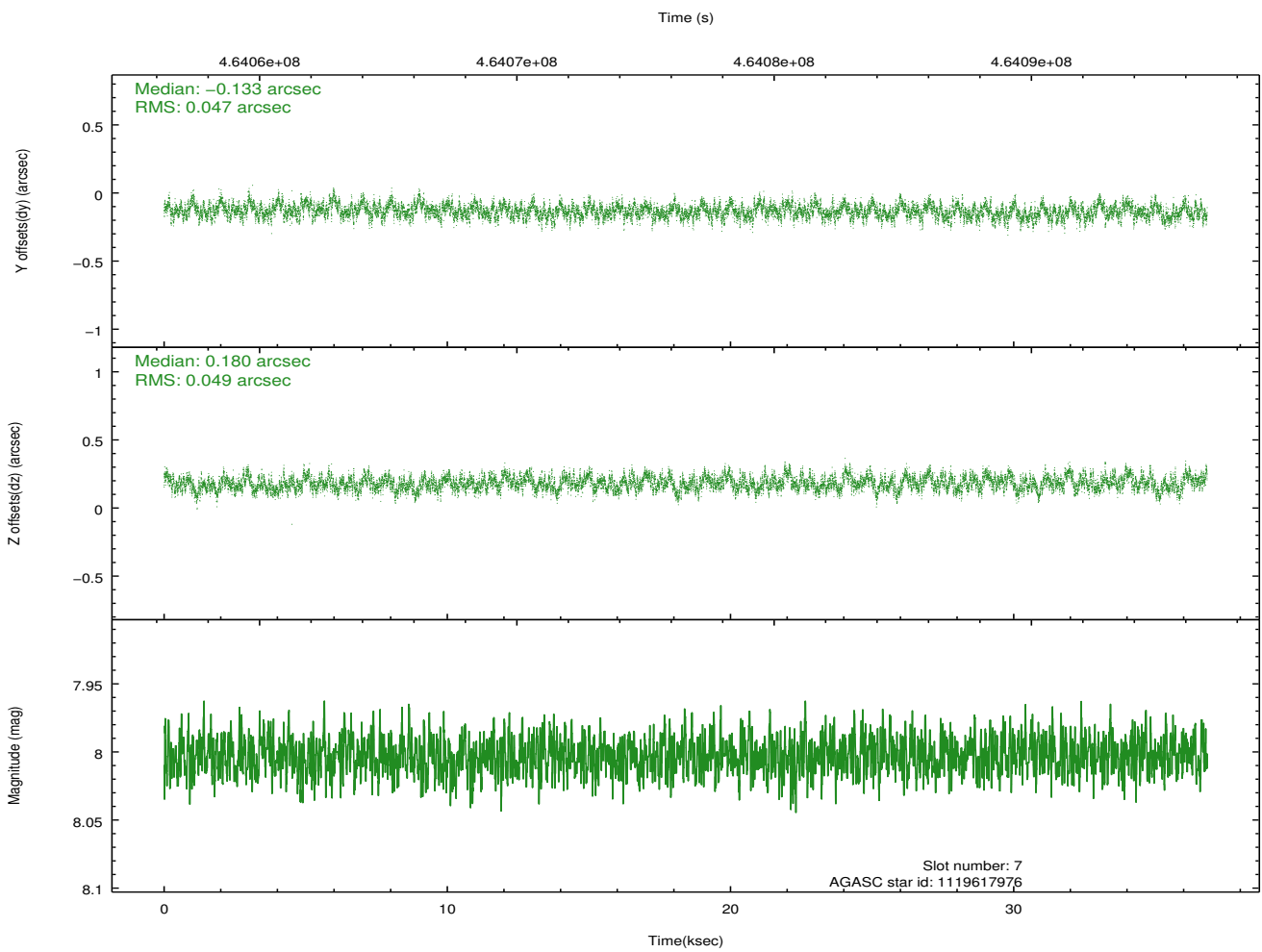
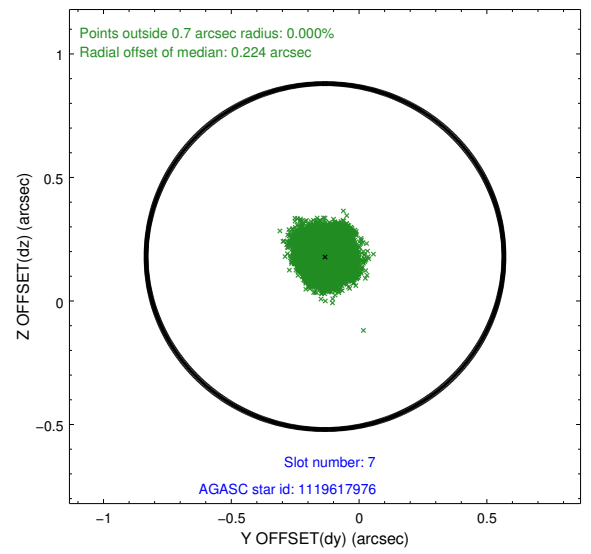
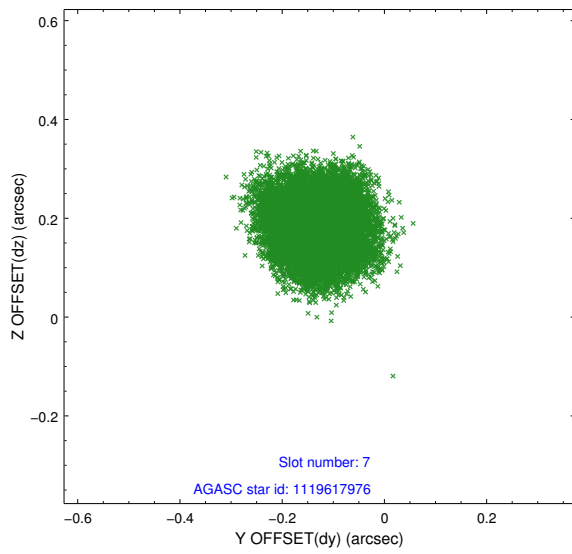
2.4.3 Slot 5



2.4.4 Slot 6

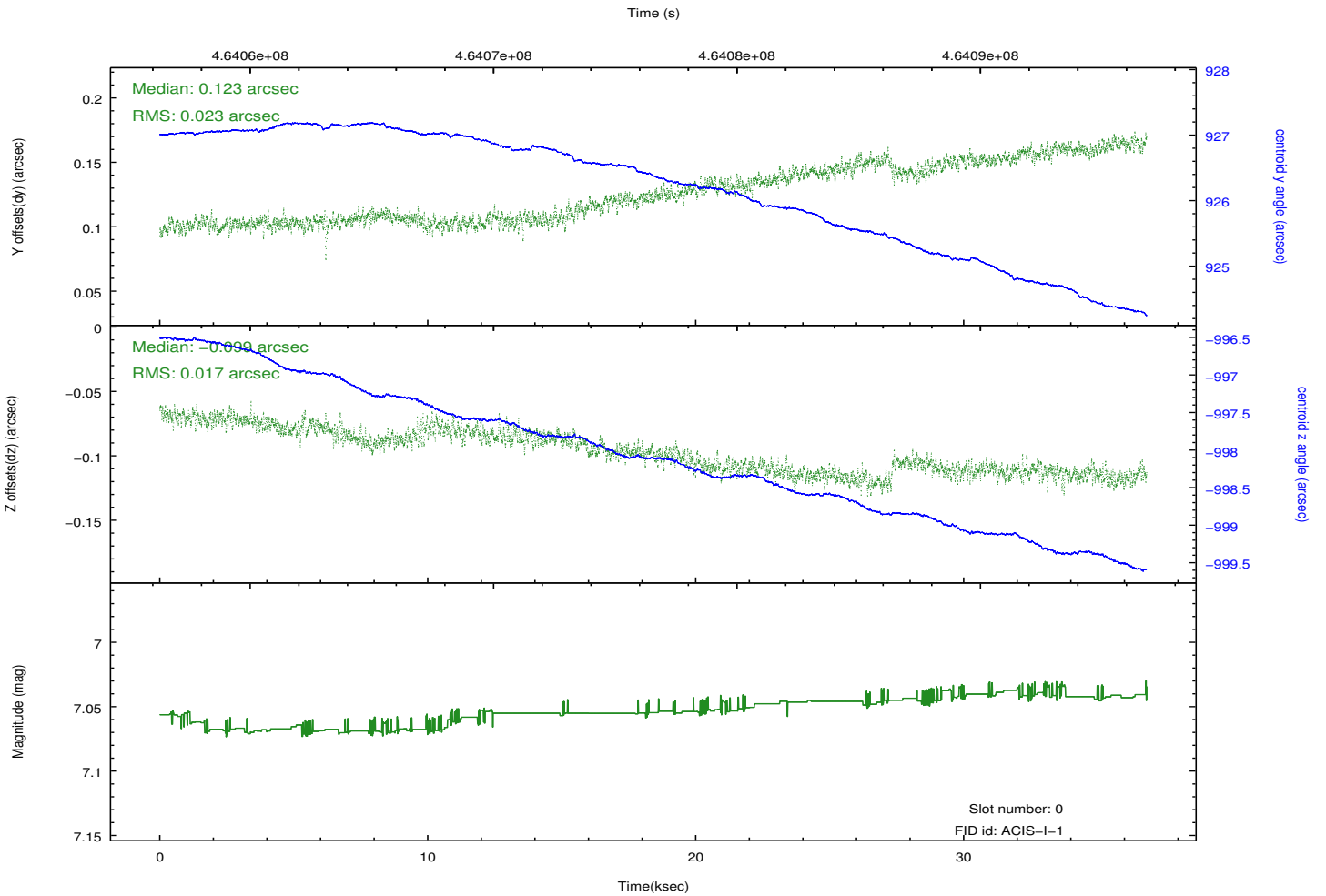
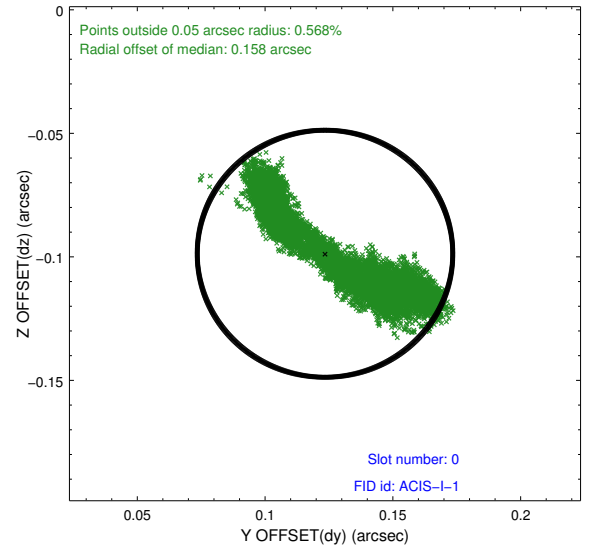
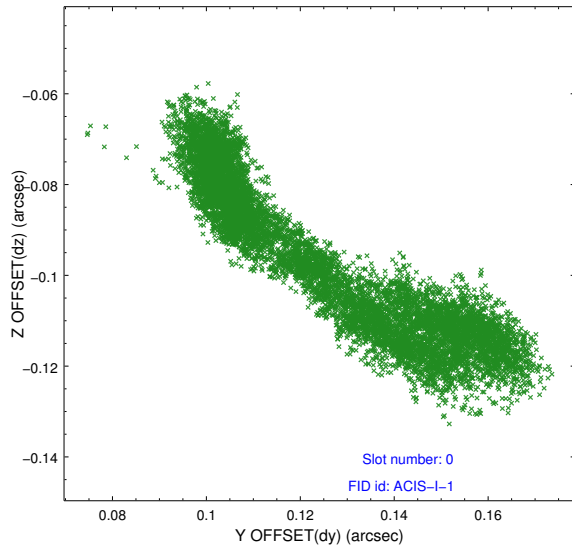


2.4.5 Slot 7

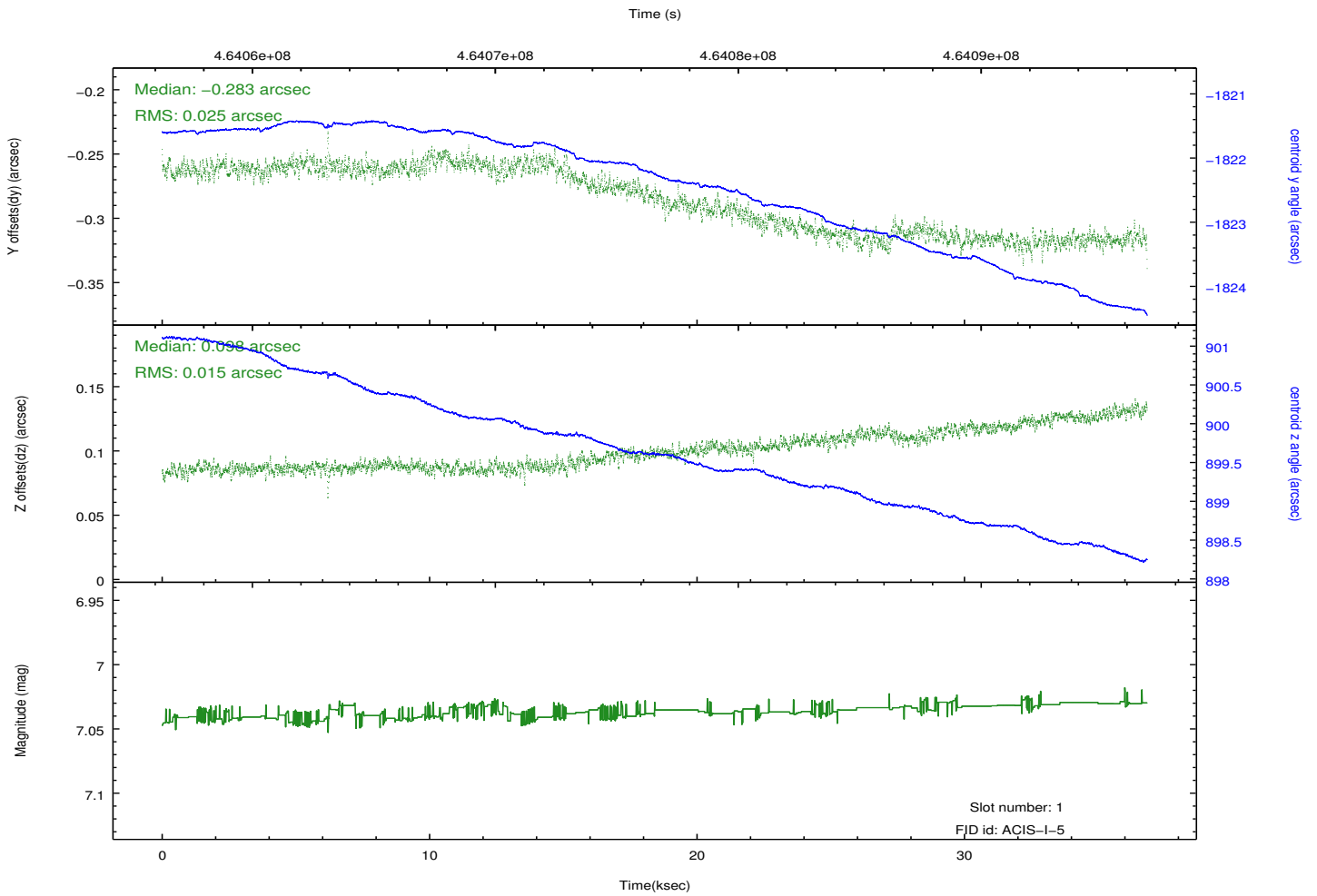
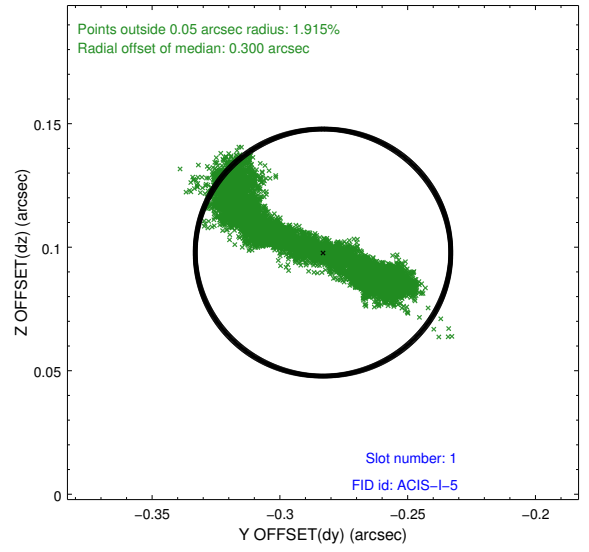
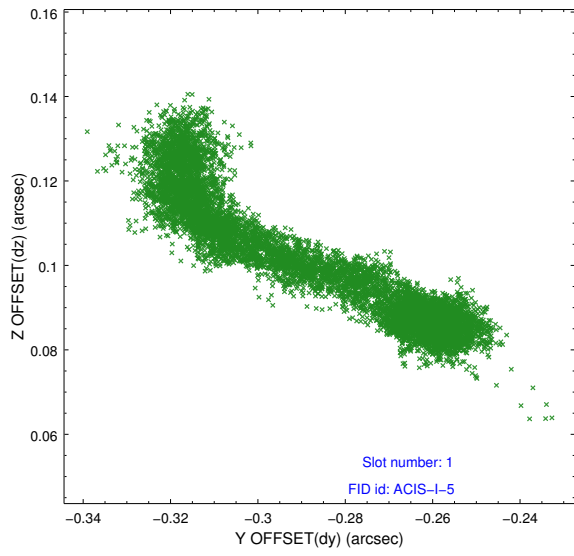


2.5 FID Slots

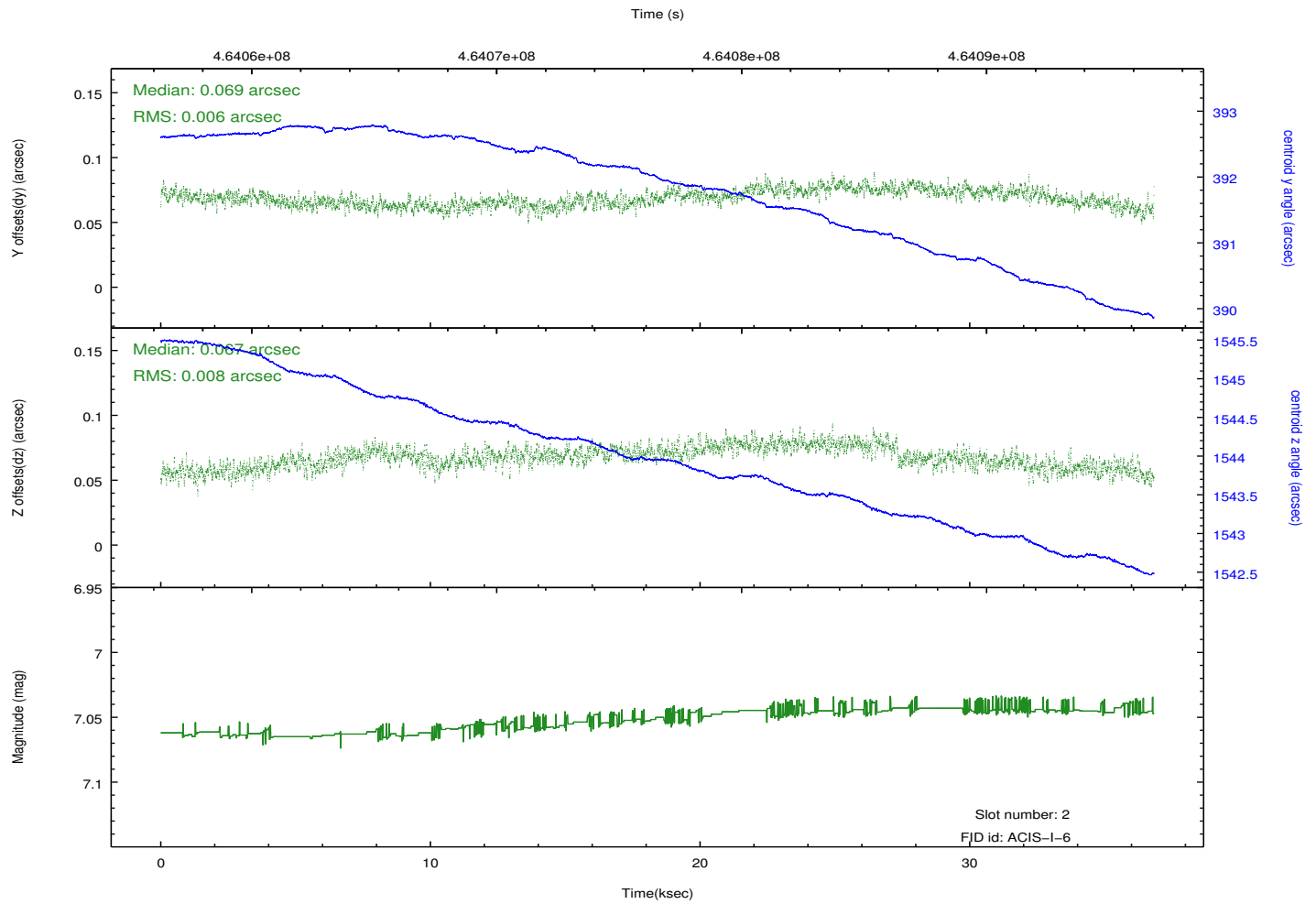
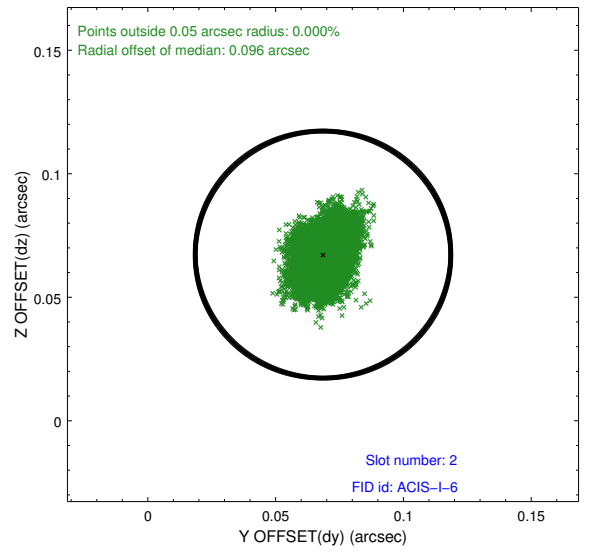
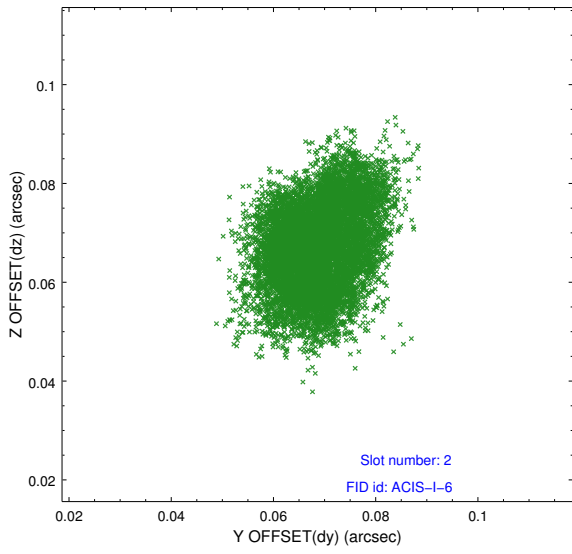
2.5.1 Slot 0



2.5.2 Slot 1



2.5.3 Slot 2



A Summary

A.1 Status

V&V Scientist	Beth Sundheim
V&V Date (YYYY-MM-DD)	2014.12.02
V&V Edition	1
V&V Disposition and Status	OK
V&V Charge Time	36.071436376214

A.2 Comments

Joint proposal with HST.

These data have been reprocessed with new aspect alignment calibration files that correct small mean offsets (up to 0.4 arcsecs) and improve overall astrometric accuracy. The new calibration was determined using data from the time period being reprocessed and was performed using cross-correlation of X-ray sources with radio and optical counterparts.