

V&V Reference Report

L2 ASCDS Version : 10

Observation 14618 - L2 Version 2
Chandra X-Ray Center

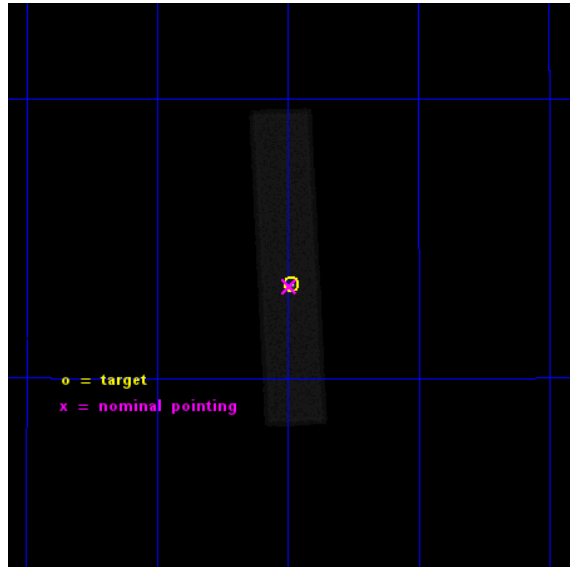
L2 Processing Date : Dec 6 2014

Contents

1	Front	2
2	OBI	3
2.1	OBI	3
2.1.1	Images	3
2.1.2	Parameters	4
2.1.3	Events	4
2.2	Compared Parameters	5
2.3	Aspect	6
2.4	Star Slots	9
2.4.1	Slot 3	9
2.4.2	Slot 4	10
2.4.3	Slot 5	11
2.4.4	Slot 6	12
2.4.5	Slot 7	13
2.5	FID Slots	14
2.5.1	Slot 0	14
2.5.2	Slot 1	15
2.5.3	Slot 2	16
A	Summary	17
A.1	Status	17
A.2	Comments	17

1 Front

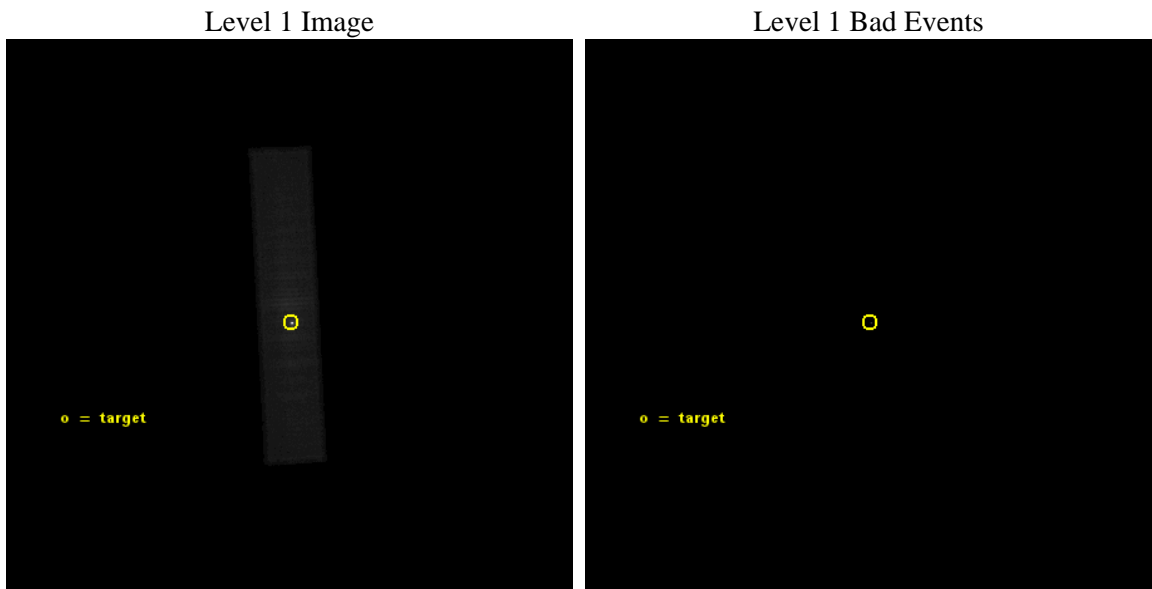
seq_num	401451	Sequence number
obs_id	14618	Observation id
title	Transient LMXBs in Globular Clusters	Proposal title
observer	Dr. David Pooley	Principal investigator
object	M15	Source name
ra_targ	322.493042	Observer's specified target RA [deg]
dec_targ	12.167	Observer's specified target Dec [deg]
ra_nom	322.49709065444	Nominal RA [deg]
dec_nom	12.164505768423	Nominal Dec [deg]
roll_nom	266.96049631007	Nominal Roll [deg]
revision	2	Processing version of data
ontime	15189.732079744	[s]
livetime	15103.004501824	Ontime multiplied by DTCOR
l2events	1031057	Number of level 2 events



2 OBI

2.1 OBI

2.1.1 Images



2.1.2 Parameters

obi_num	1	Obi number	sched_exp_time	15000.000000	[s] Scheduled observation exposure time
ascdsver	10.3.1	Processing system revision	ontime	15189.732079744	[s]
caldsver	4.6.4	 	l1events	1305048	Number of level 1 events
date	2014-12-07T00:07:54	Date and time of file creation			
revision	2	Processing version of data			

2.1.3 Events

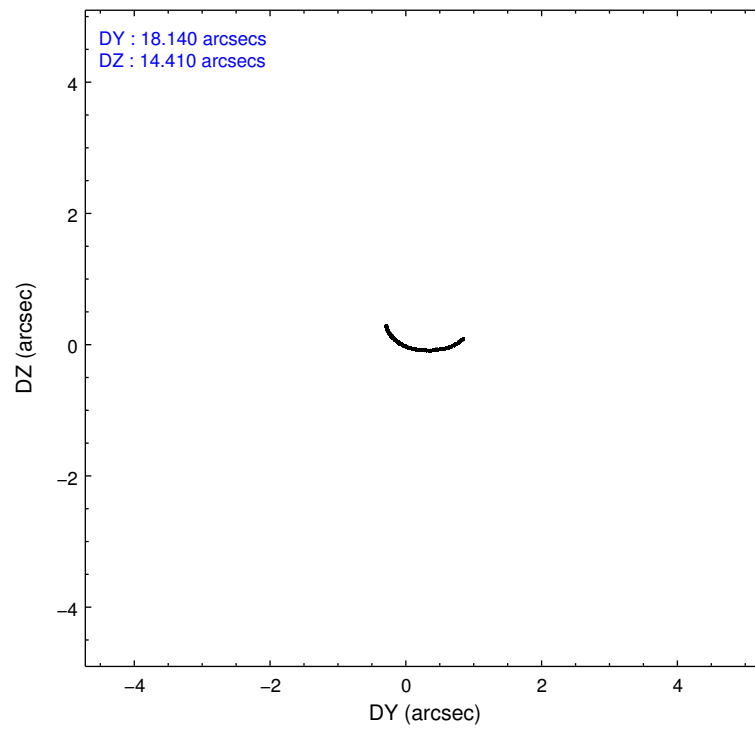
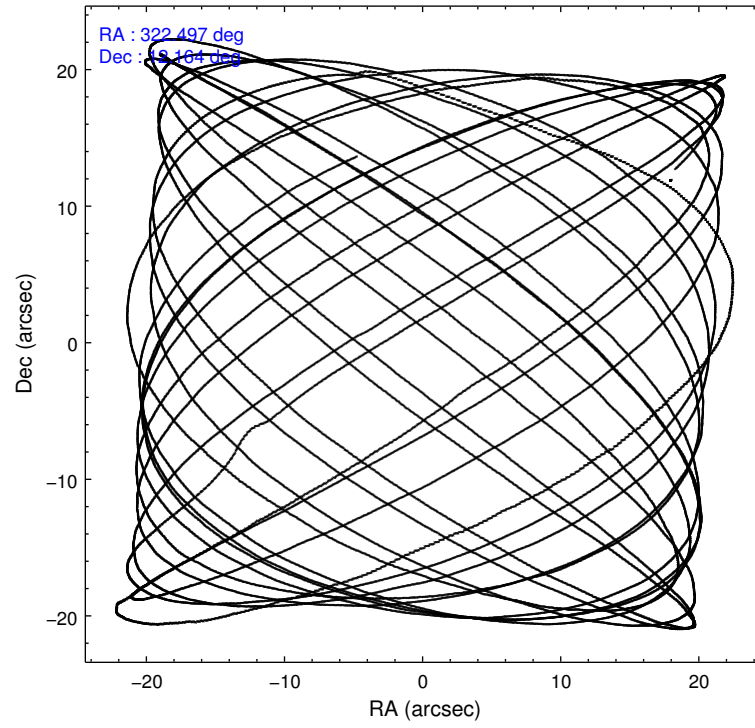
Level 1 Events

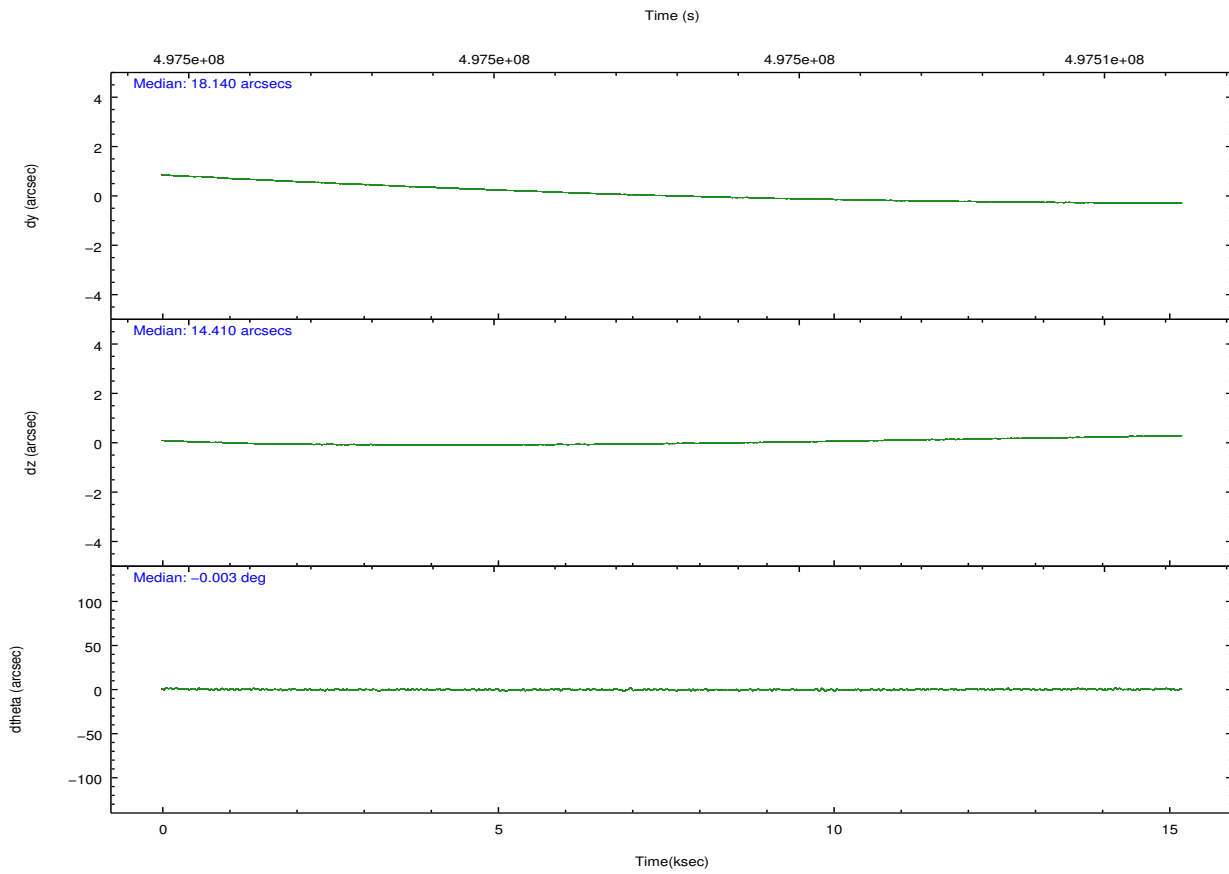
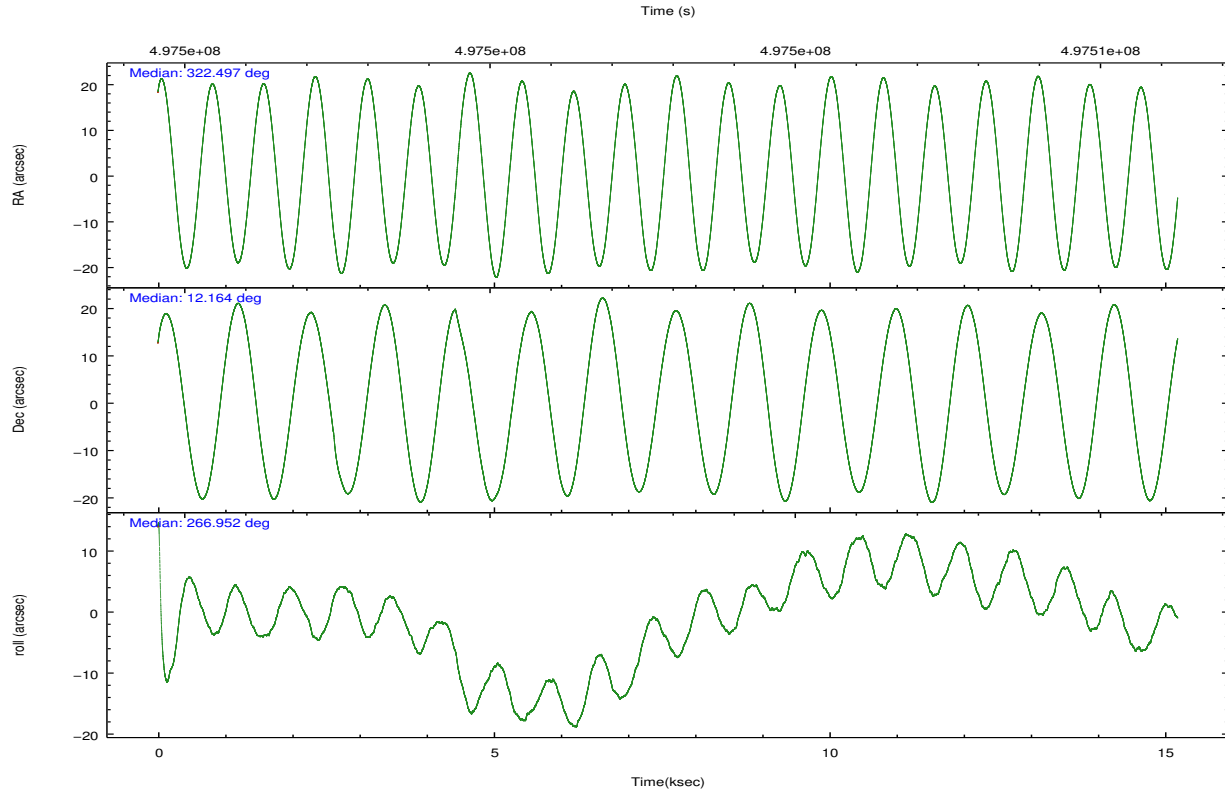
	segment 1	segment 2	segment 3
level 1 events	1040	1303999	9
rejected events	50	38681	5
rejected %	4%	2%	55%

2.2 Compared Parameters

Parameter	Planned	Actual	Parameter	Planned	Actual
Instrument	HRC	HRC	Obspar format version number	7	7
Detector	HRC-S	HRC-S	Obspar file type	PREDICTED	ACTUAL
Grating	NONE	NONE	Obspar update status	NONE	UPDATED
Data mode	OBSERVING	OBSERVING			
Observation mode	POINTING	POINTING			
[deg] Pointing RA	322.482509	322.4970906544364			
[deg] Pointing Dec	12.189423	12.16450576842342			
[deg] Pointing Roll	266.896211	266.9604963100747			
[mm] SIM focus pos	-1.429586	-1.428180813131781			
[mm] SIM defocus	0.1037507710433287	0.1051558262725154			
[mm] SIM translation stage pos	250.455976	250.466033080201			
[mm] SIM translation stage offset	0	-0.01005468664627074			
[s] Observation start time (MET)	497495506.184000	497494666.26195			
Observation start date	2013-10-07T01:10:39	2013-10-07T00:57:46			
[s] Observation end time (MET)	497510506.184000	497511103.67535			
Observation end date	2013-10-07T05:20:39	2013-10-07T05:31:43			

2.3 Aspect





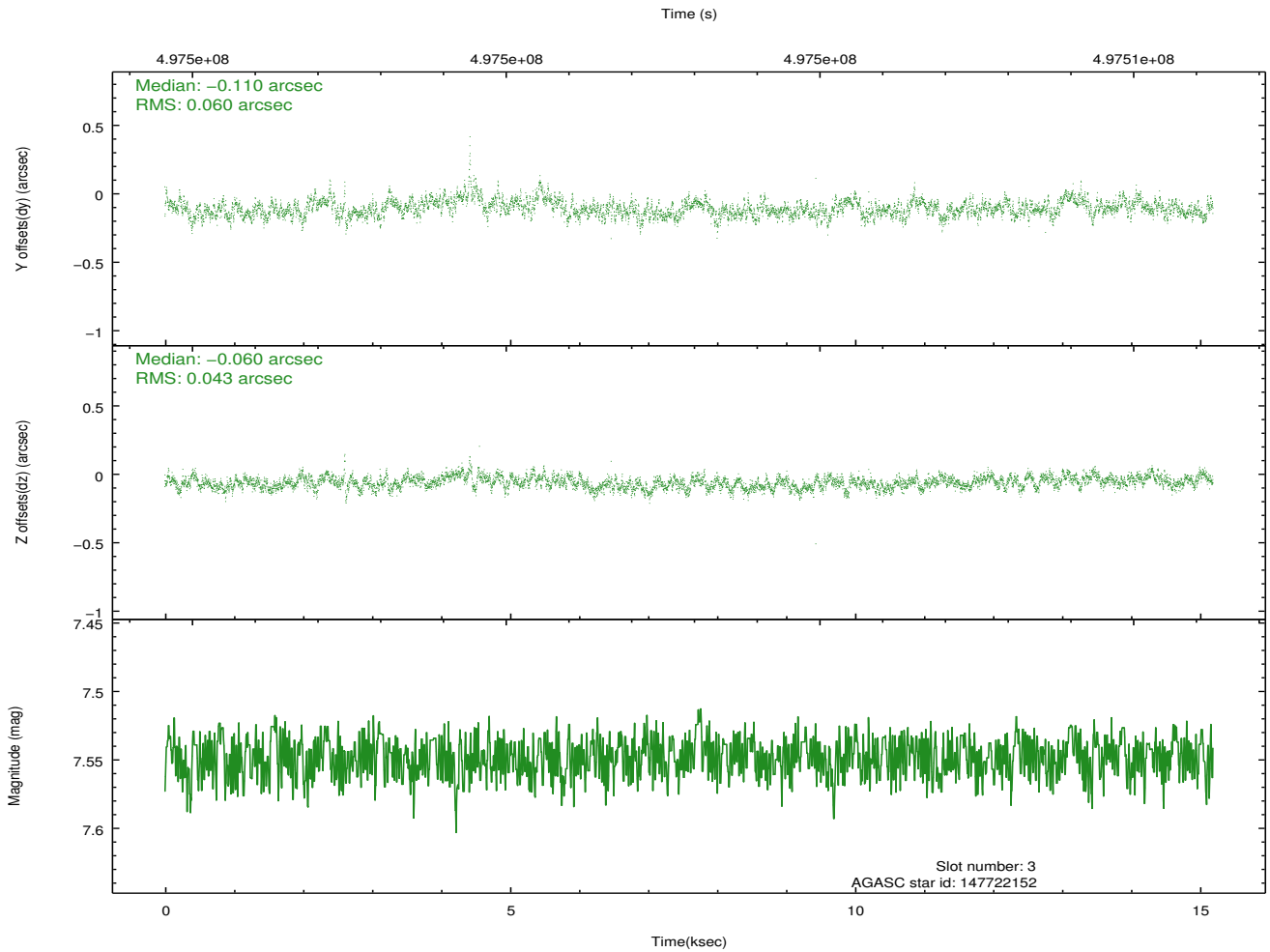
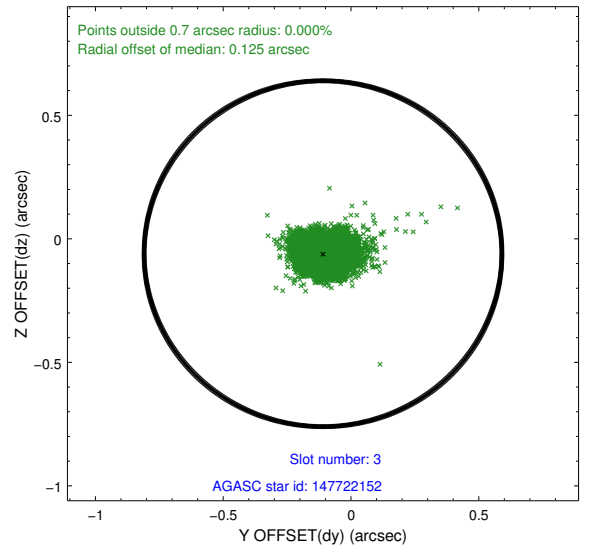
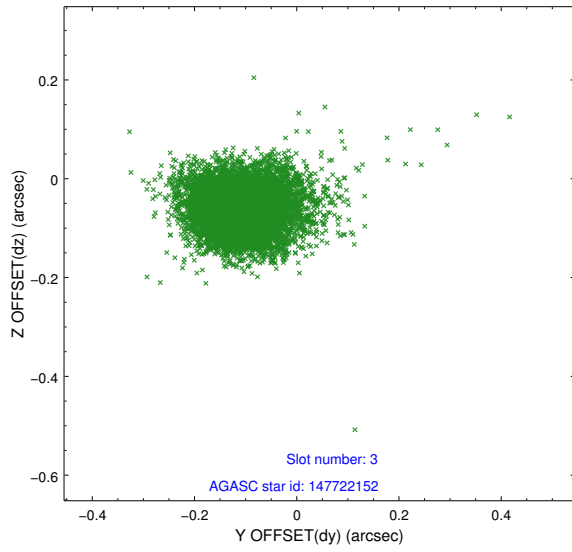
Slot Statistics

slot	status	used	id	mag	n_pts	med_dy	med_dz	dr1	dr2	ra	dec	mean_y	mean_z
0	FID		HRC-S-1	7.01	3705	0.058	-0.208	0.008	0.013	0.000000	0.000000	-1172.76	-463.34
1	FID		HRC-S-2	6.98	3706	0.244	-0.119	0.014	0.025	0.000000	0.000000	1226.79	-456.02
2	FID		HRC-S-3	7.02	3706	0.086	0.025	0.016	0.024	0.000000	0.000000	-1175.12	566.30
3	GUIDE	used	147722152	7.55	7409	-0.110	-0.060	0.075	0.126	322.735072	12.555367	-1363.81	815.05
4	GUIDE	used	147731936	8.72	7409	0.026	0.124	0.094	0.153	322.421133	12.450297	-925.87	-265.73
5	GUIDE	used	147732752	9.05	7384	-0.003	-0.079	0.119	0.193	321.797195	11.999048	812.76	-2372.18
6	GUIDE	used	147733624	9.05	7398	0.077	0.069	0.108	0.177	321.878010	12.639099	-1502.83	-2208.27
7	GUIDE	used	147735992	6.98	7409	0.007	-0.053	0.072	0.119	322.299566	11.952911	885.89	-596.22

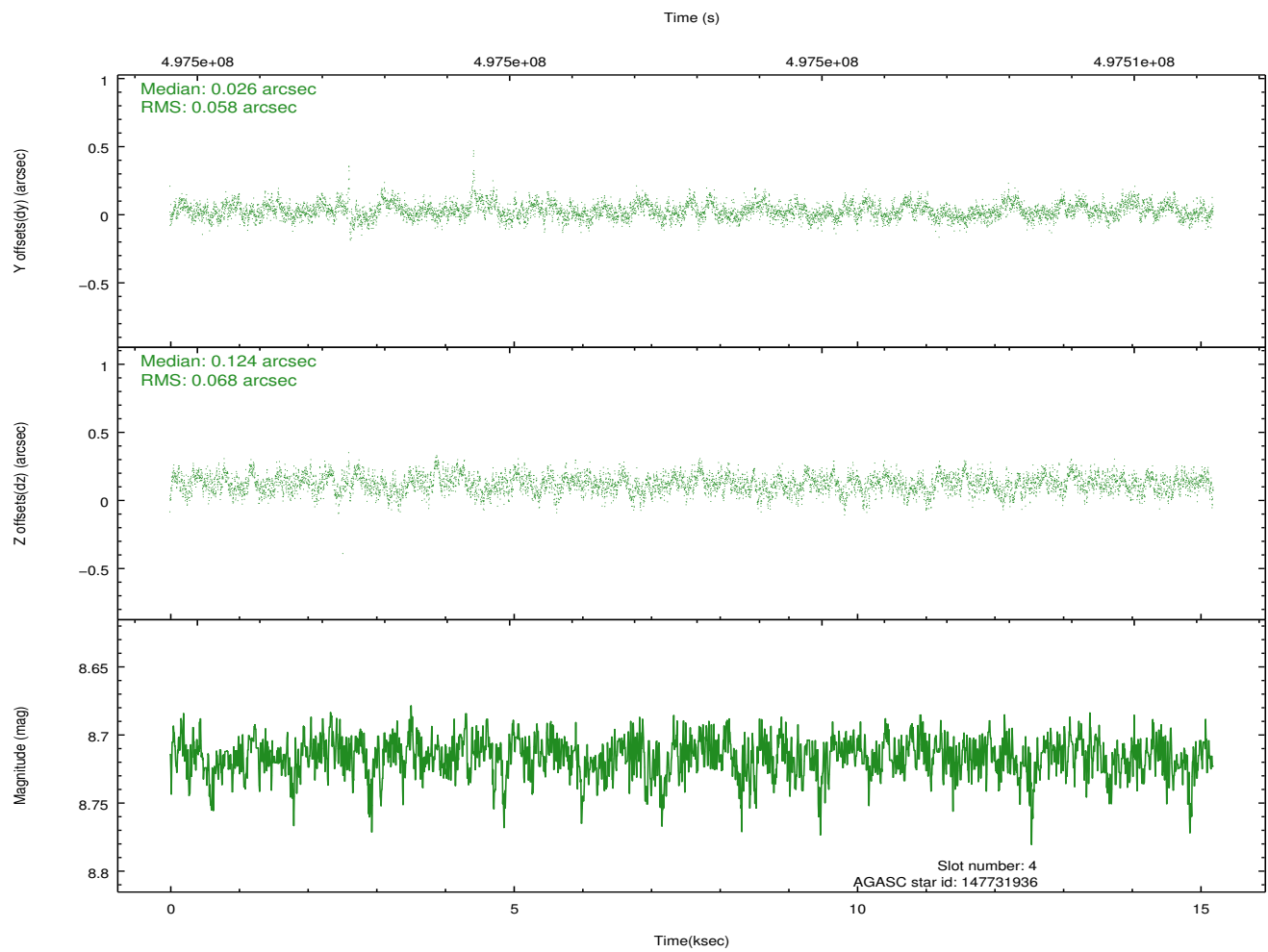
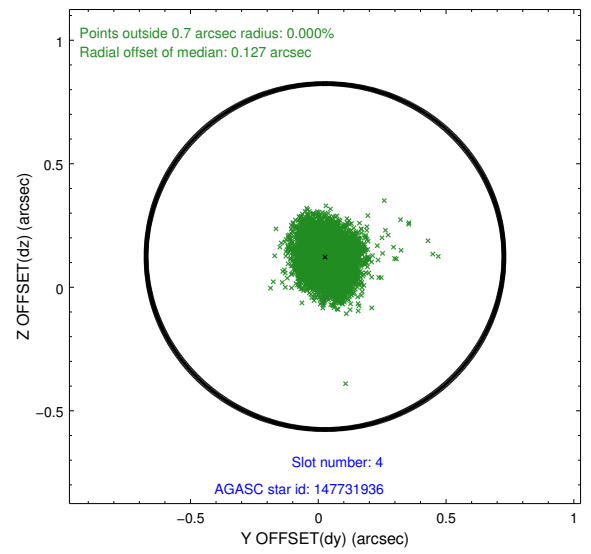
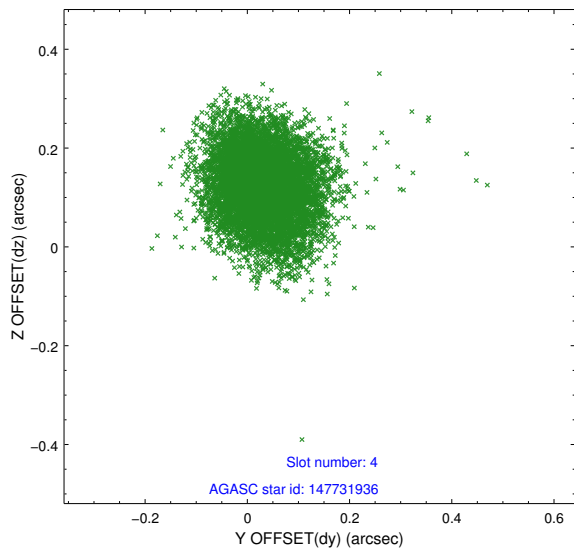
∞

2.4 Star Slots

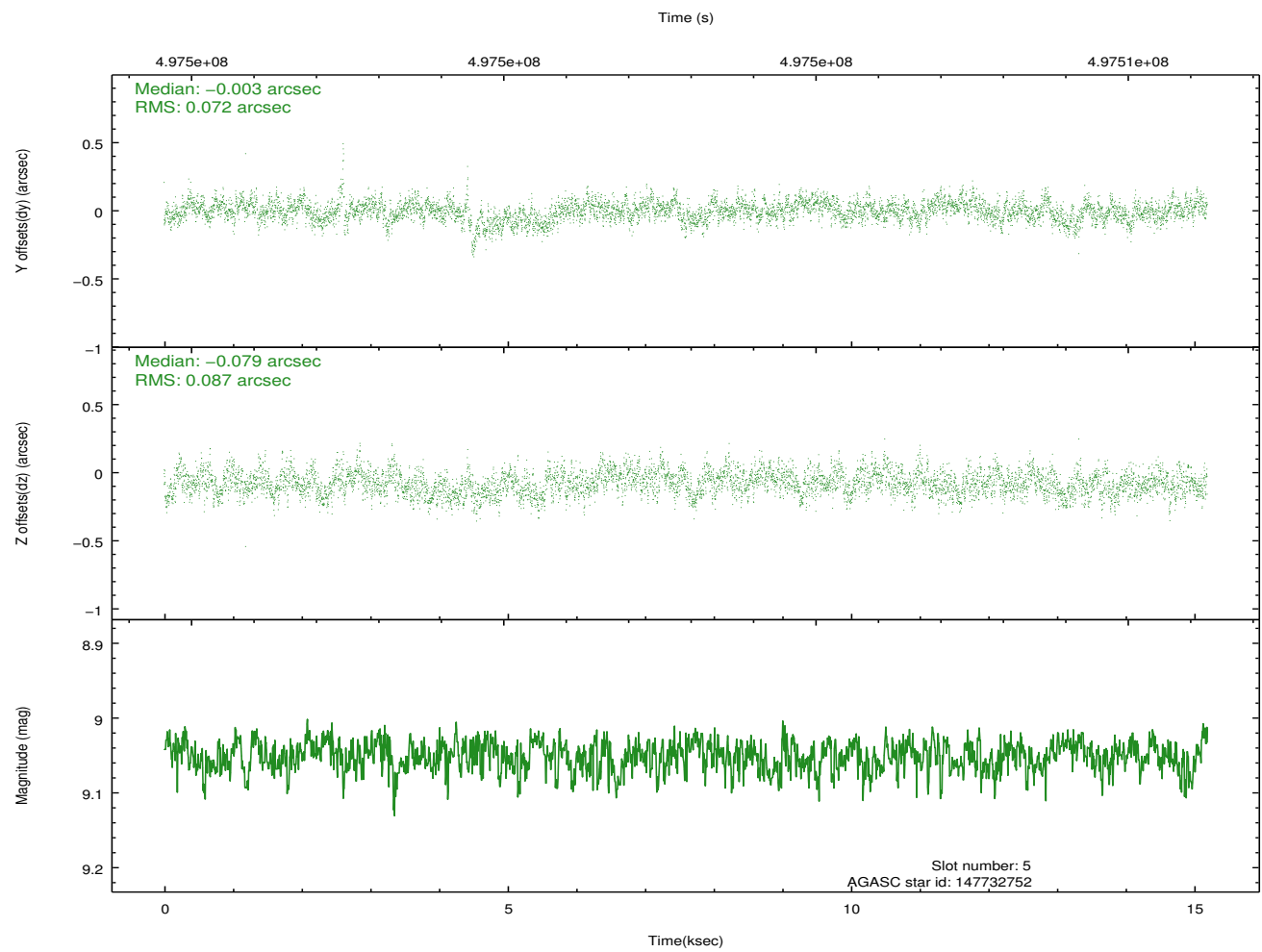
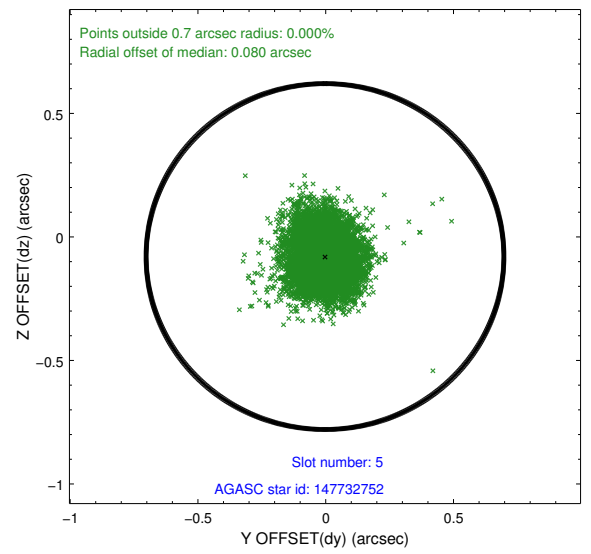
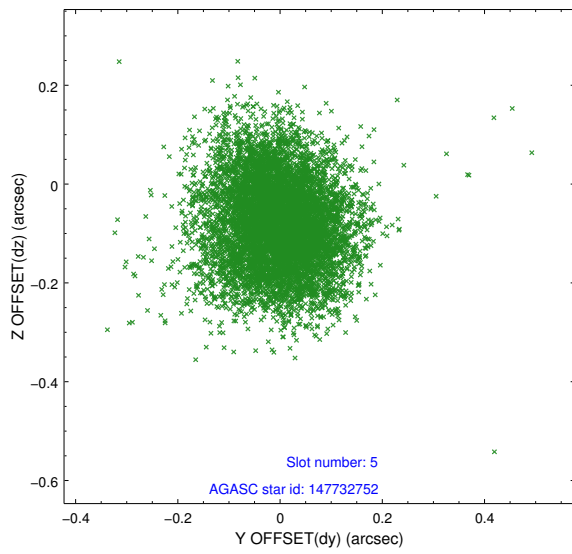
2.4.1 Slot 3



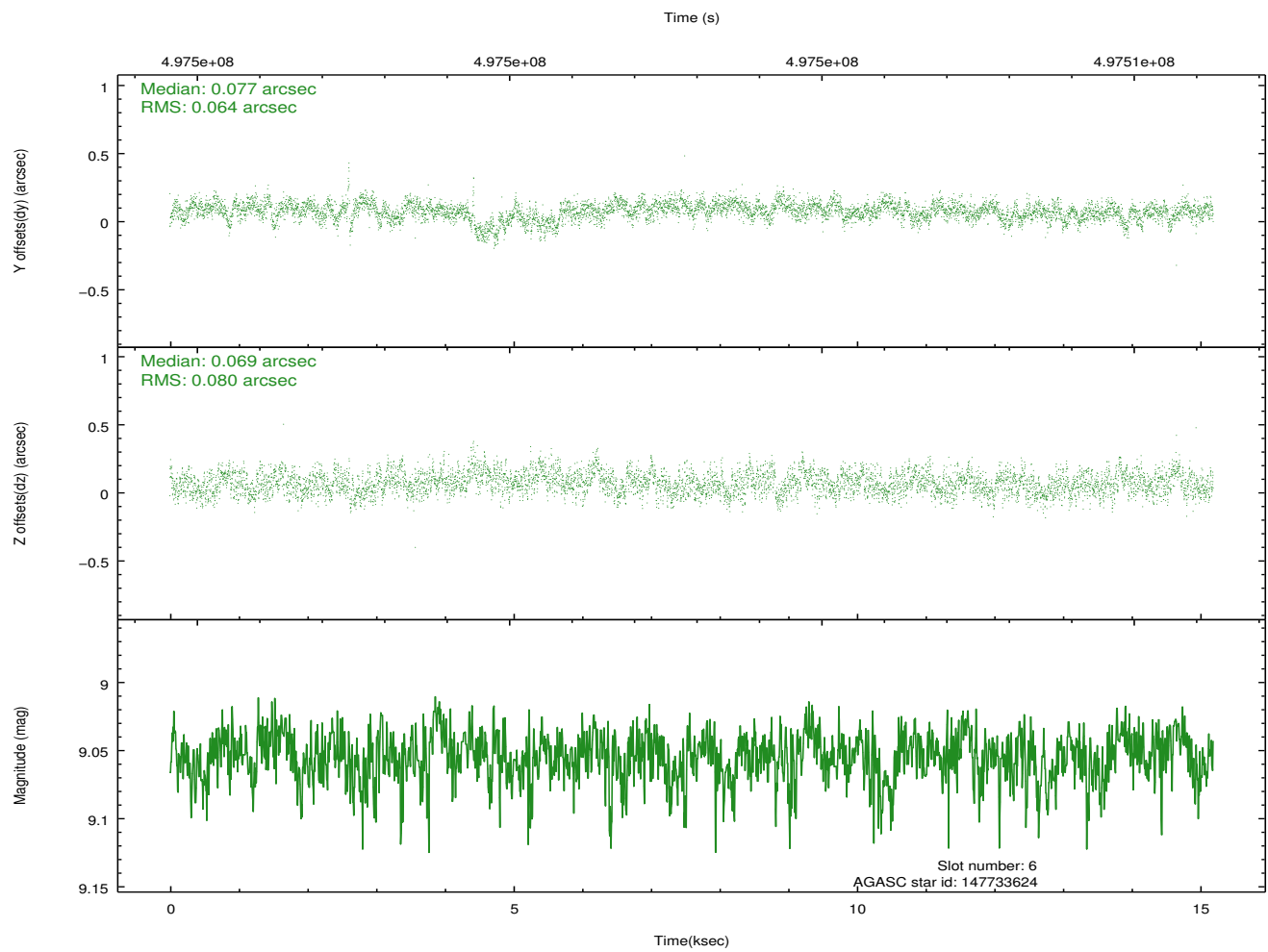
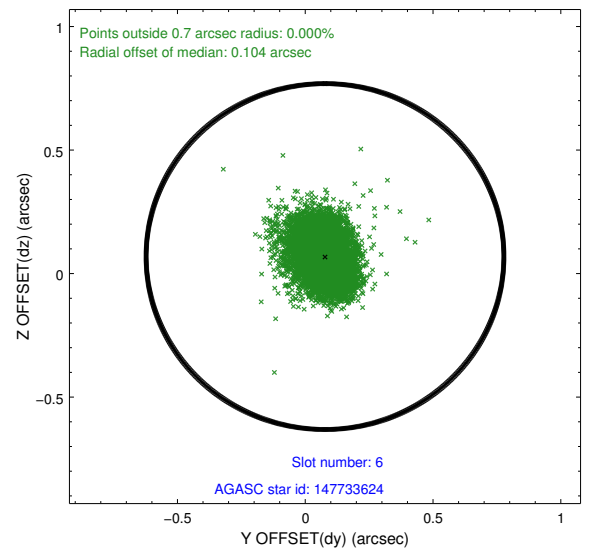
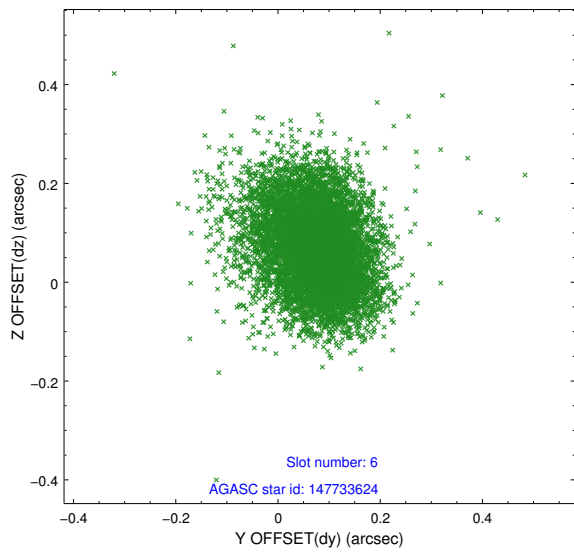
2.4.2 Slot 4



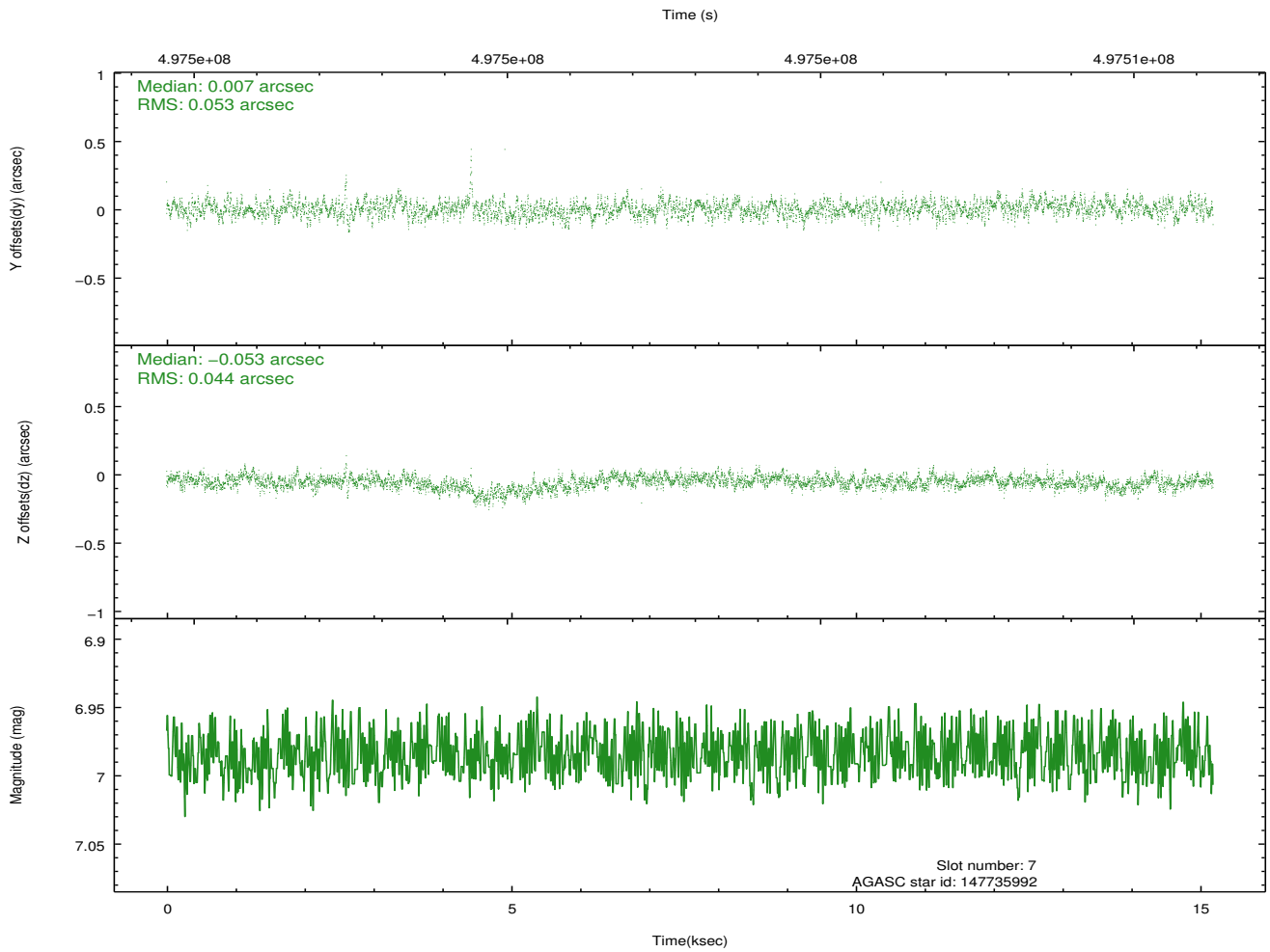
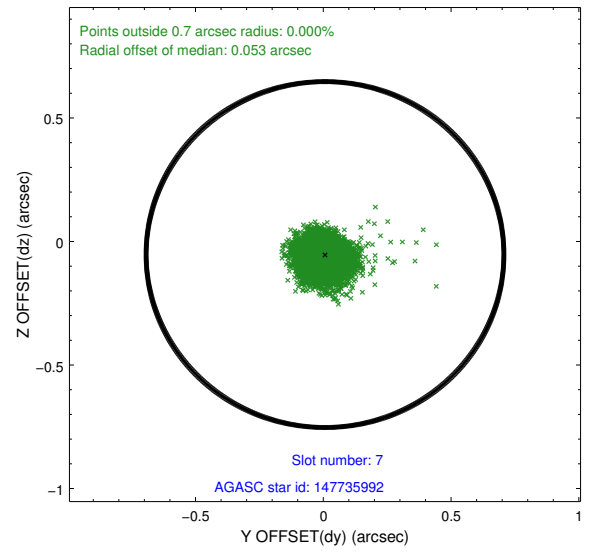
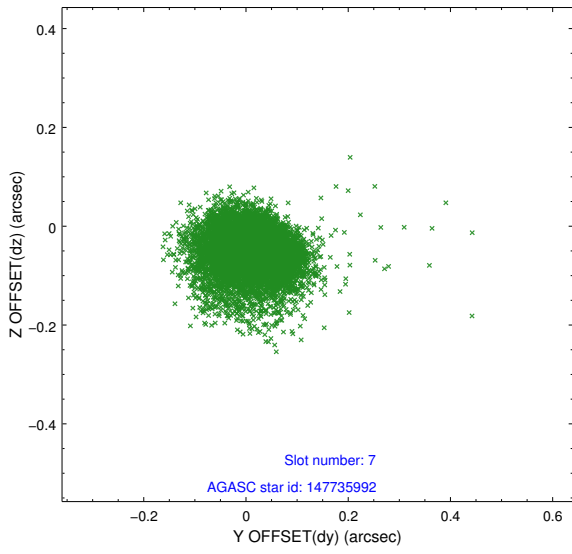
2.4.3 Slot 5



2.4.4 Slot 6

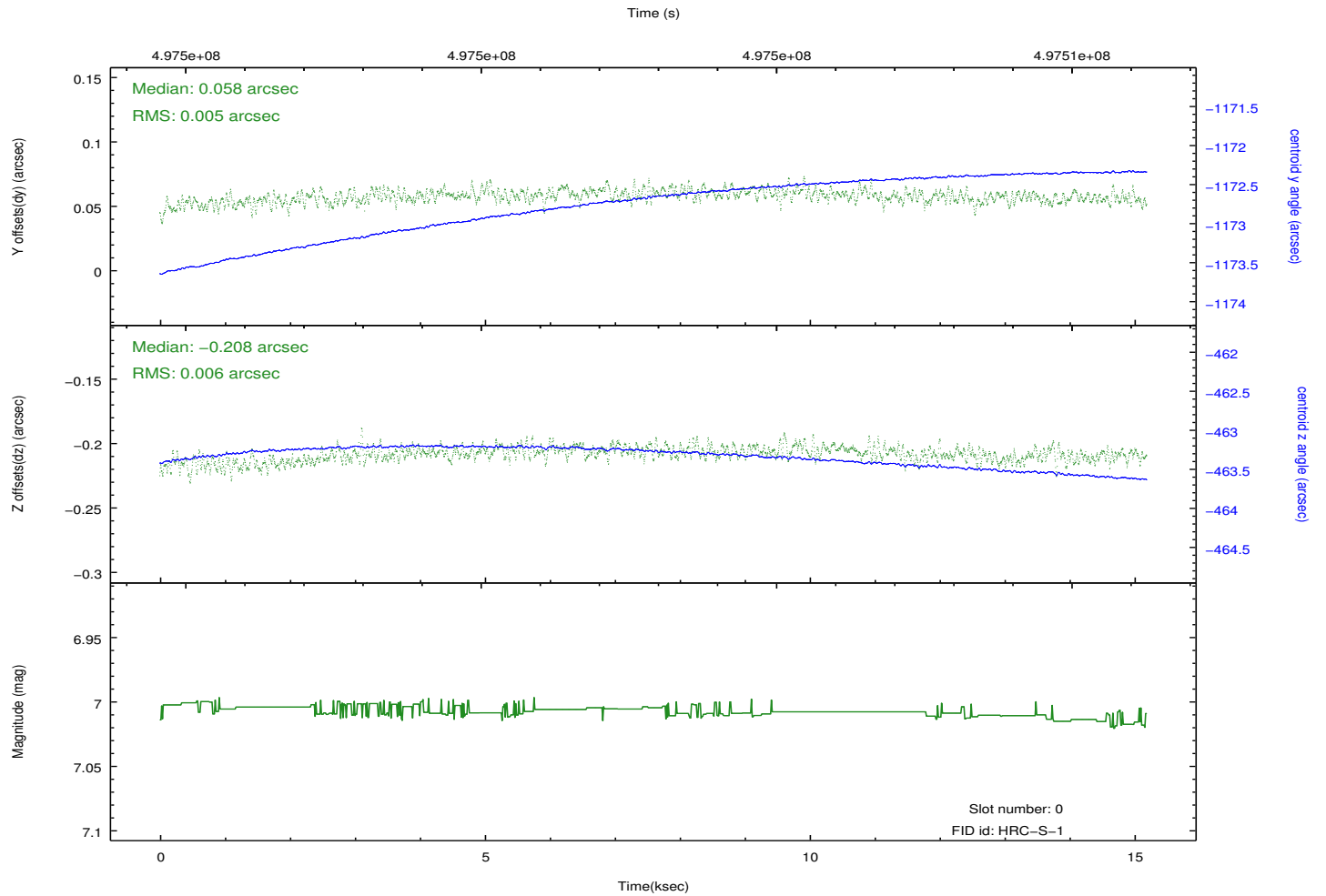
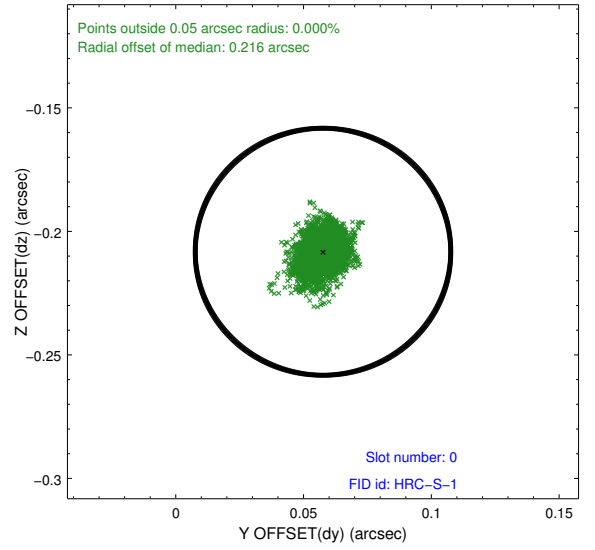
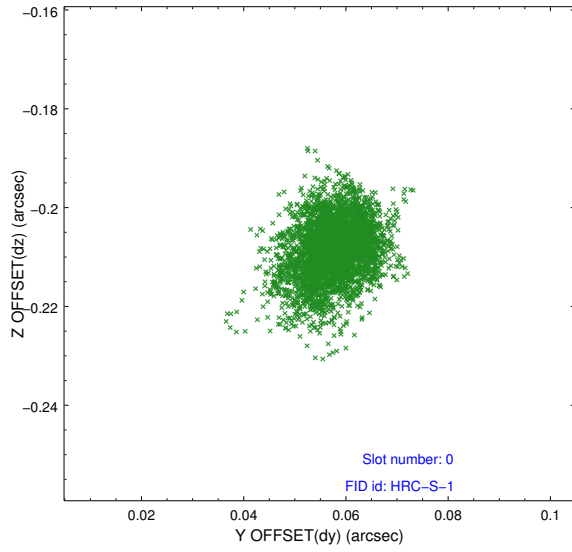


2.4.5 Slot 7

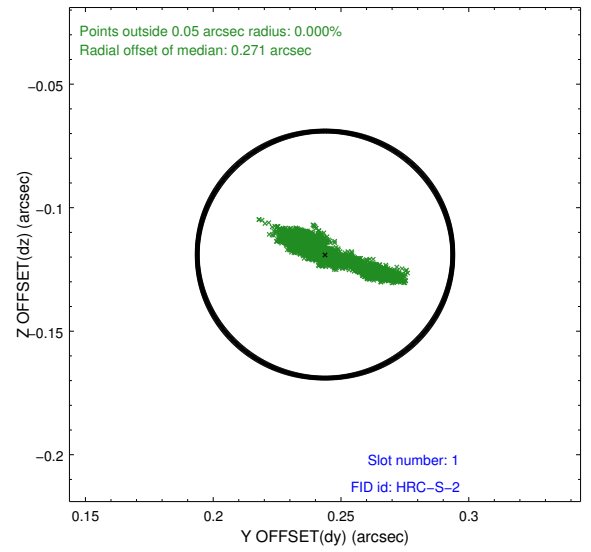
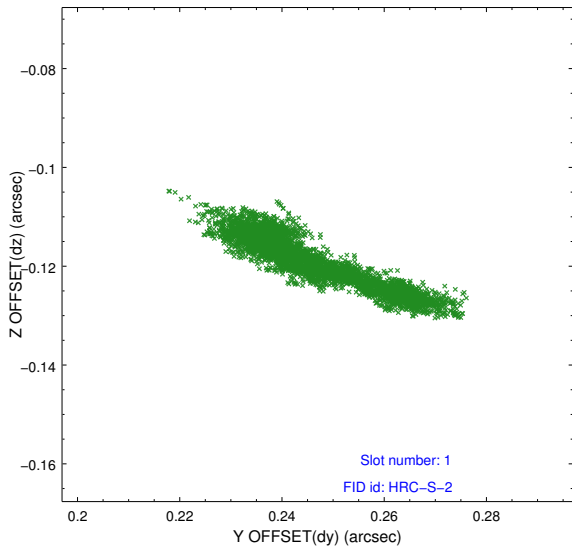


2.5 FID Slots

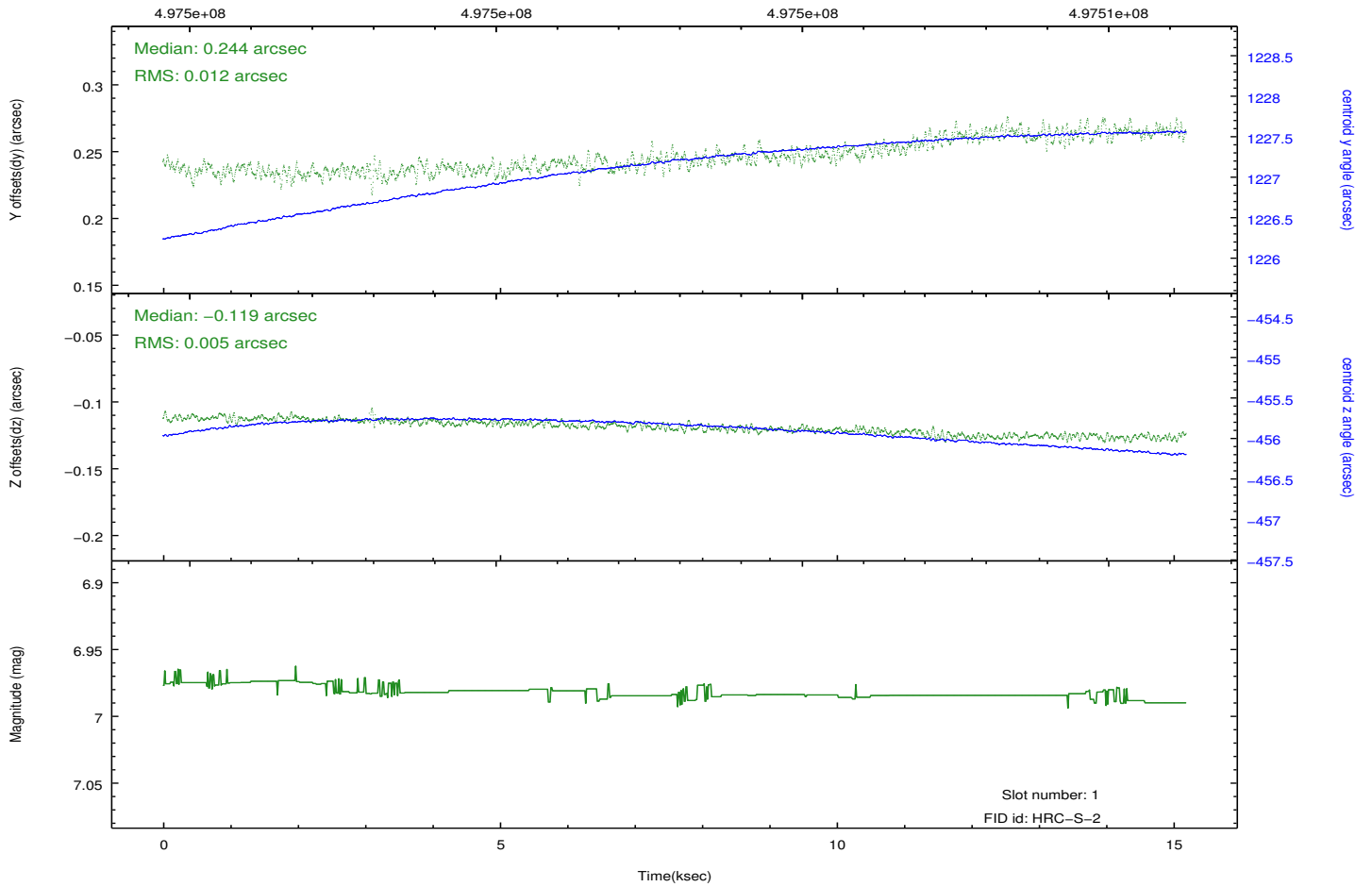
2.5.1 Slot 0



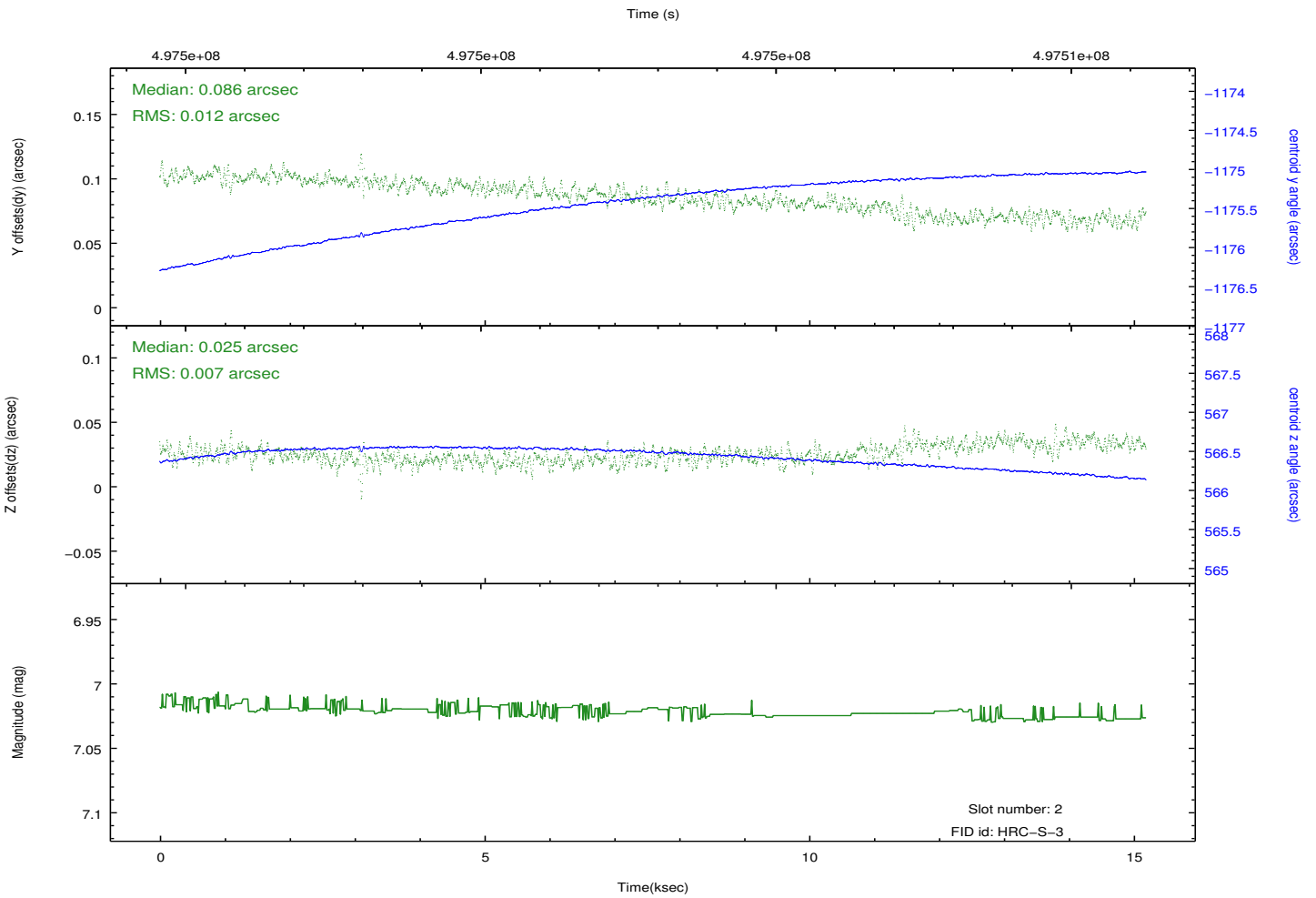
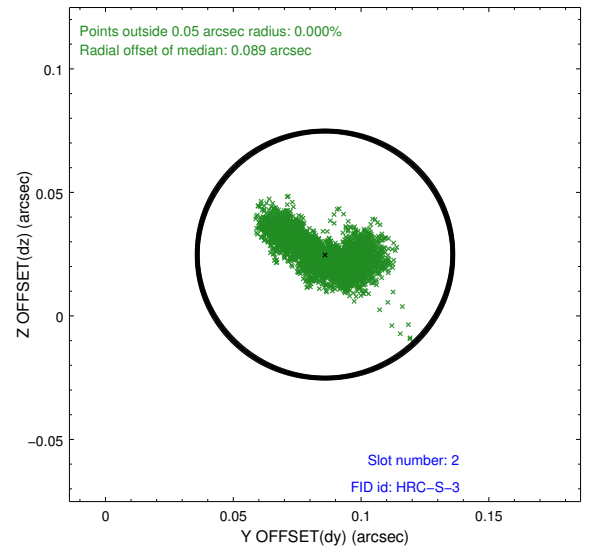
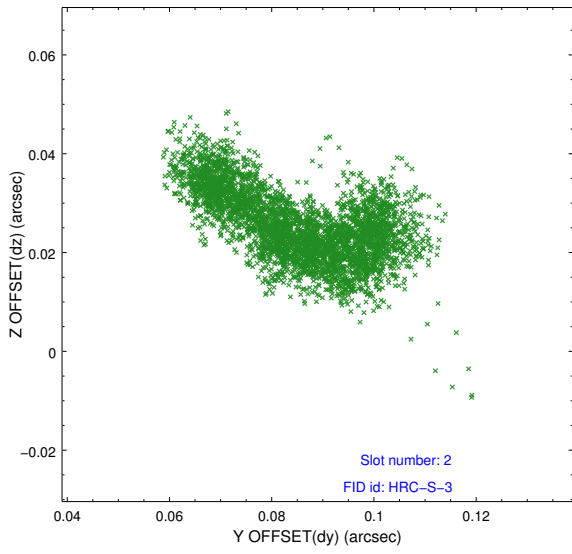
2.5.2 Slot 1



Time (s)



2.5.3 Slot 2



A Summary

A.1 Status

V&V Scientist	Beth Sundheim
V&V Date (YYYY-MM-DD)	2014.12.12
V&V Edition	1
V&V Disposition and Status	OK
V&V Charge Time	15.189732079744

A.2 Comments

These data have been reprocessed with new aspect alignment calibration files that correct small mean offsets (up to 0.4 arcsecs) and improve overall astrometric accuracy. The new calibration was determined using data from the time period being reprocessed and was performed using cross-correlation of X-ray sources with radio and optical counterparts.