

V&V Reference Report

L2 ASCDS Version : 8.5.1.1

Observation 15218 - L2 Version 2
Chandra X-Ray Center

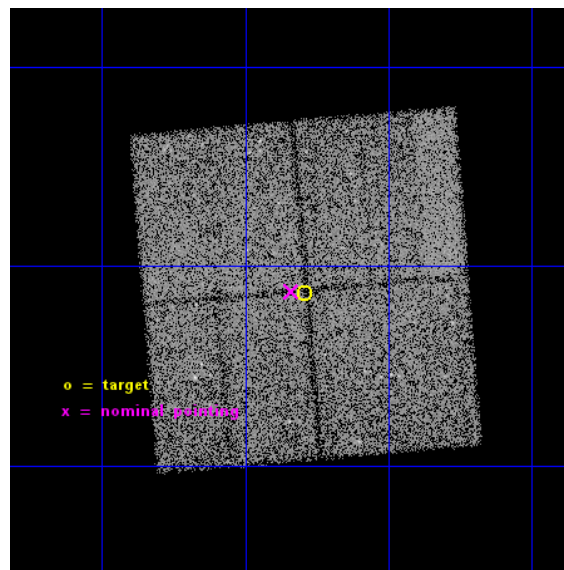
L2 Processing Date : Dec 2 2014

Contents

1	Front	2
2	OBI	3
2.1	OBI	3
2.1.1	Images	3
2.1.2	Bias	3
2.1.3	Parameters	4
2.1.4	Events	4
2.2	Compared Parameters	5
2.3	Aspect	6
2.4	Star Slots	9
2.4.1	Slot 3	9
2.4.2	Slot 4	10
2.4.3	Slot 5	11
2.4.4	Slot 6	12
2.4.5	Slot 7	13
2.5	FID Slots	14
2.5.1	Slot 0	14
2.5.2	Slot 1	15
2.5.3	Slot 2	16
A	Summary	17
A.1	Status	17
A.2	Comments	17

1 Front

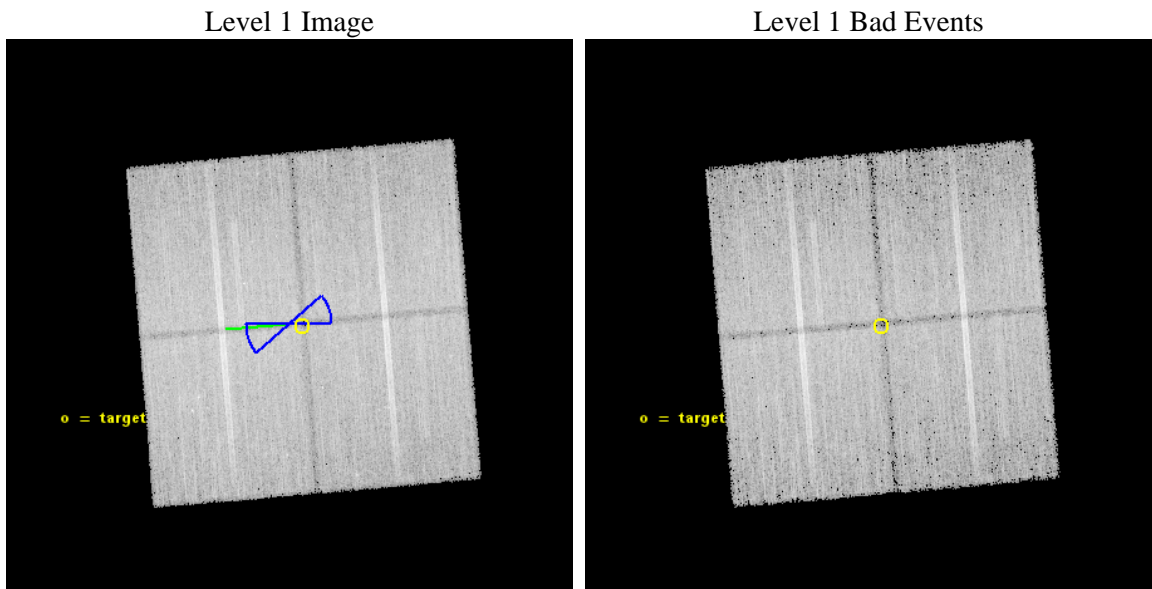
seq_num	901048	Sequence number
obs_id	15218	Observation id
title	The COSMOS Legacy Survey	Proposal title
observer	Dr Francesca Civano	Principal investigator
object	COSMOS Legacy	Source name
dtcycle	0	
cycle	P	events from which exps? Prim/Second/Both
ra_targ	149.57294	Observer's specified target RA [deg]
dec_targ	2.143934	Observer's specified target Dec [deg]
ra_nom	149.58476741701	Nominal RA [deg]
dec_nom	2.1458744530626	Nominal Dec [deg]
roll_nom	265.2082475793	Nominal Roll [deg]
revision	2	Processing version of data
ontime	47091.26014328	Sum of GTIs [s]
livetime	46475.978161427	Livetime [s]
ontime0	47091.219103277	Sum of GTIs [s]
ontime1	47091.26014328	Sum of GTIs [s]
ontime2	47081.878072619	Sum of GTIs [s]
ontime3	47091.342223287	Sum of GTIs [s]
l2events	93947	Number of level 2 events



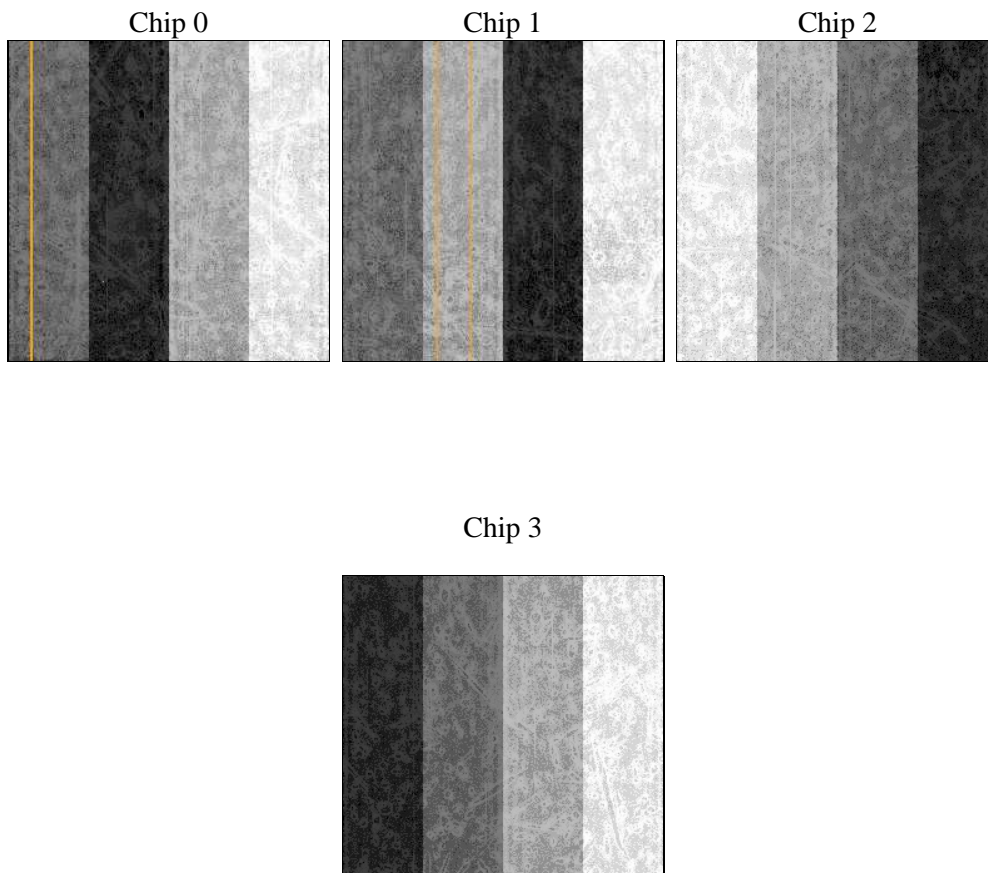
2 OBI

2.1 OBI

2.1.1 Images



2.1.2 Bias



2.1.3 Parameters

obi_num	1	Obi number	sched_exp_time	47000.000000	[s] Scheduled observation exposure time
ascdsver	10.3	Processing system revision	ontime	47091.26014328	Sum of GTIs [s]
caldsver	4.6.4	 	ontime0	47091.219103277	Sum of GTIs [s]
date	2014-12-02T07:47:16	Date and time of file creation	ontime1	47091.26014328	Sum of GTIs [s]
revision	2	Processing version of data	ontime2	47081.878072619	Sum of GTIs [s]
			ontime3	47091.342223287	Sum of GTIs [s]
			l1events	897994	Number of level 1 events

2.1.4 Events

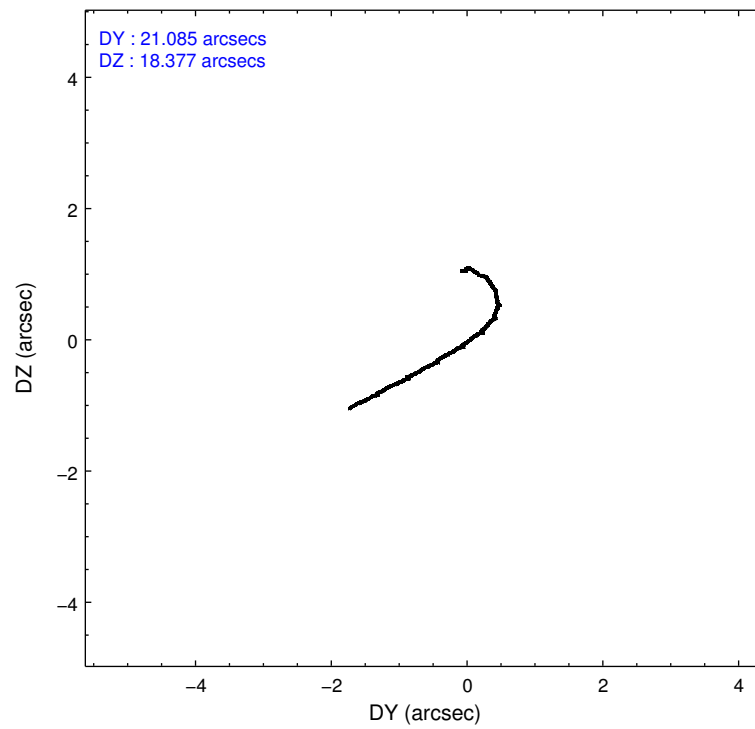
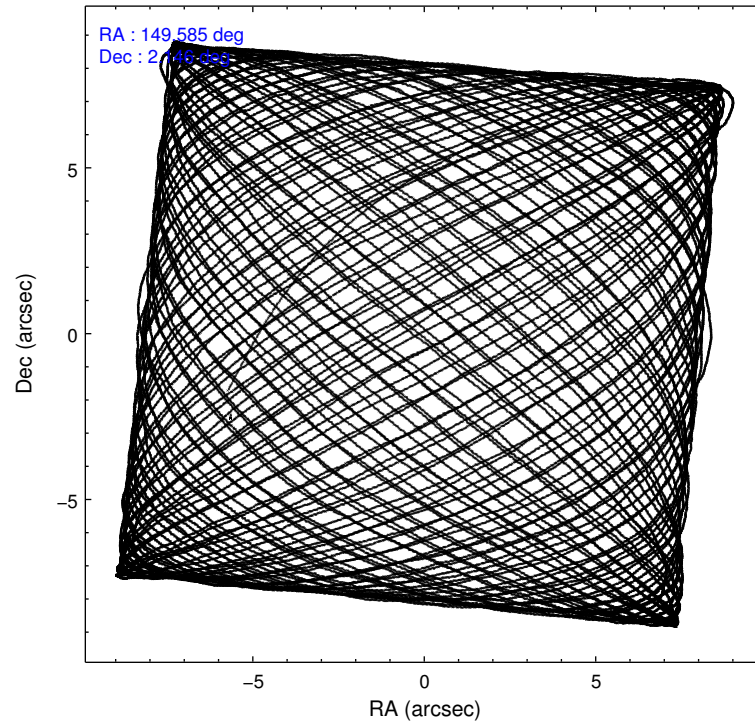
	ccd 0	ccd 1	ccd 2	ccd 3
level 1 events	215129	215404	237907	229554
rejected events	187244	184724	210618	203006
rejected %	87%	85%	88%	88%

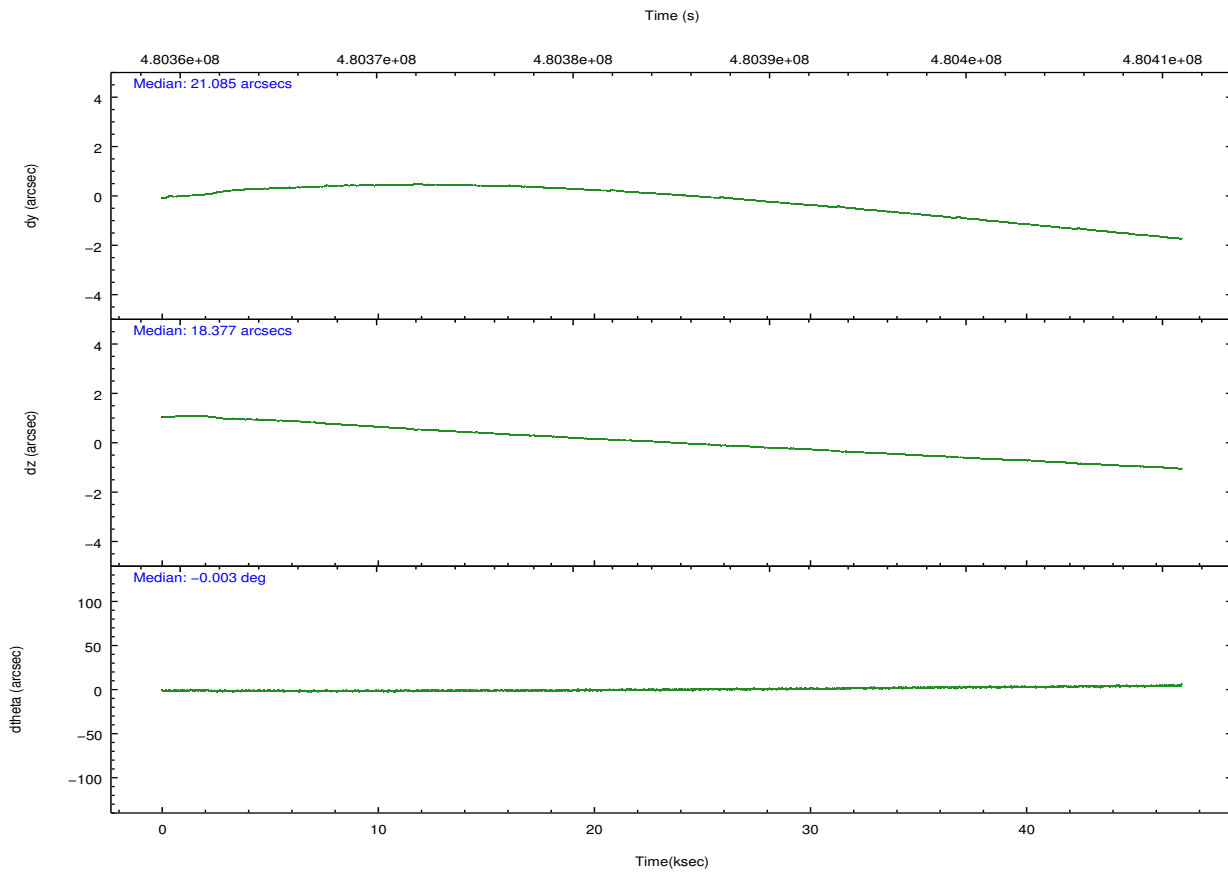
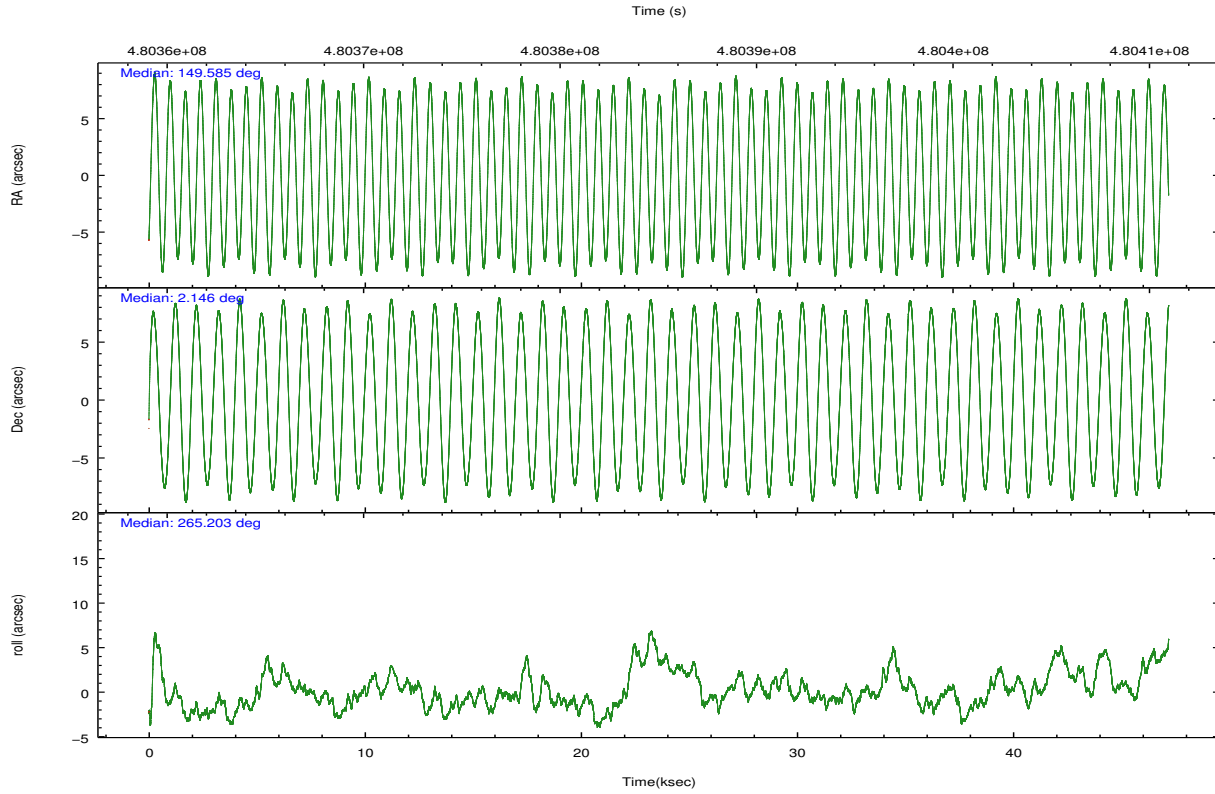
	ccd 0	ccd 1	ccd 2	ccd 3
grade 0 events	9588	10537	9760	9302
	4%	4%	4%	4%
grade 1 events	143	136	144	126
	0%	0%	0%	0%
grade 2 events	6865	7266	6599	5831
	3%	3%	2%	2%
grade 3 events	2935	3115	2776	2957
	1%	1%	1%	1%
grade 4 events	2802	3039	2798	2777
	1%	1%	1%	1%
grade 5 events	10834	11765	10520	12537
	5%	5%	4%	5%
grade 6 events	5697	6724	5360	5690
	2%	3%	2%	2%
grade 7 events	176265	172822	199950	190334
	81%	80%	84%	82%

2.2 Compared Parameters

Parameter	Planned	Actual	Parameter	Planned	Actual
Instrument	ACIS	ACIS	Obspar format version number	7	7
Detector	ACIS-0123	ACIS-0123	Obspar file type	PREDICTED	ACTUAL
Grating	NONE	NONE	Obspar update status	NONE	UPDATED
Data mode	VFAINT	VFAINT	Number of optional ACIS chips dropped	0	0
Observation mode	POINTING	POINTING	On-chip summing requested	N	N
[deg] Pointing RA	149.572944	149.5847674170055	Subarray requested	NONE	NONE
[deg] Pointing Dec	2.170698	2.14587445306261	Alternating exposures requested	N	N
[deg] Pointing Roll	265.000005	265.2082475793042	[s] Primary exposure time	0.000000	3.1
[deg] Roll angle	250.000000	250.000000			
[deg] Roll tolerance	20.000000	20.000000			
Roll constraint allows 180D rotation	Y	Y			
[mm] SIM focus pos	-0.782348	-0.7809083437167272			
[mm] SIM defocus	0	0.001439871863259334			
[mm] SIM translation stage pos	-233.592463	-233.5874344608287			
[mm] SIM translation stage offset	0	-0.005018542100998502			
[s] Observation start time (MET)	480361615.184000	480360564.43047			
Observation start date	2013-03-22T17:45:48	2013-03-22T17:29:24			
[s] Observation end time (MET)	480408615.184000	480409358.53311			
Observation end date	2013-03-23T06:49:08	2013-03-23T07:02:38			
Read mode	TIMED	TIMED			

2.3 Aspect





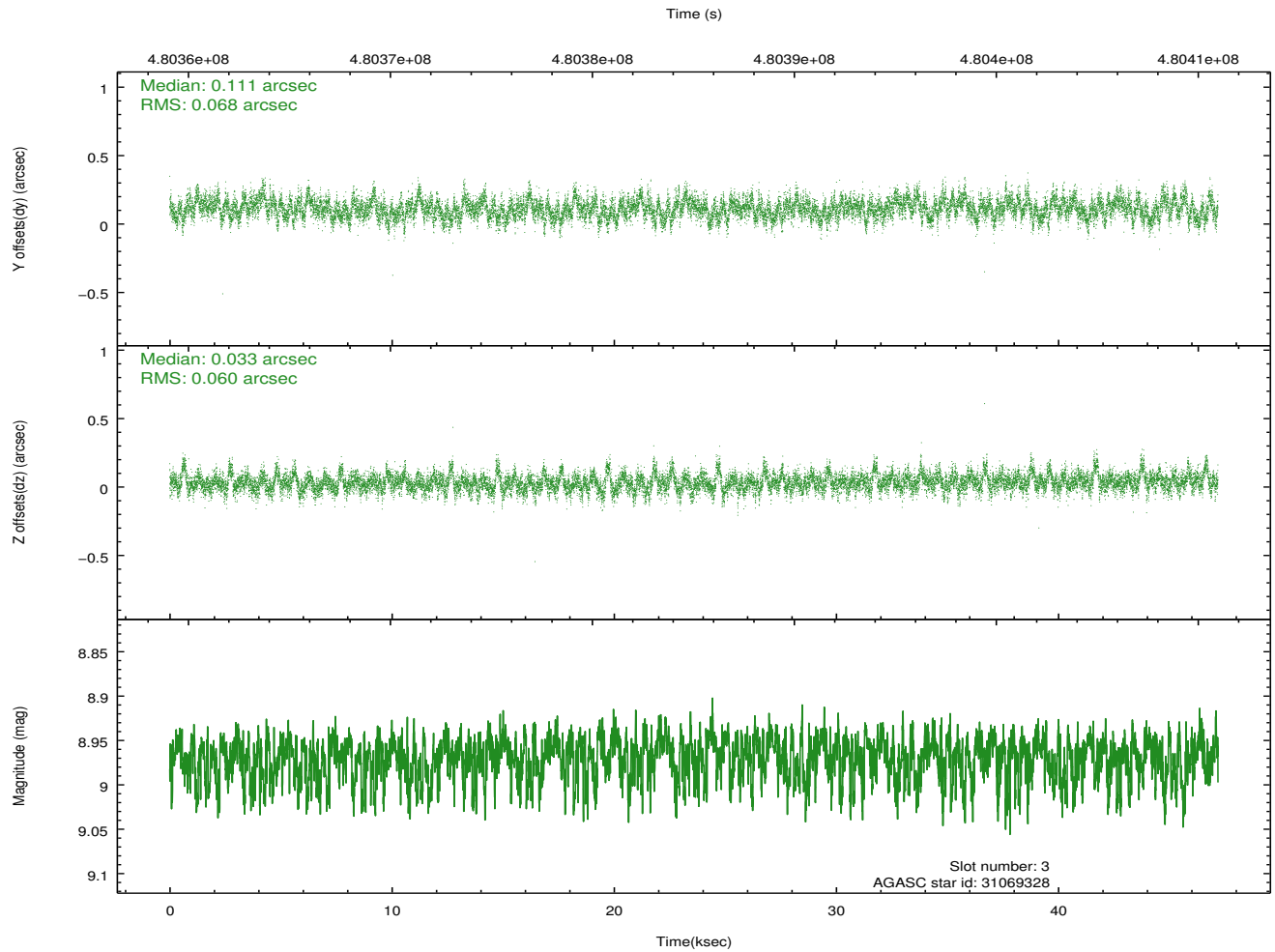
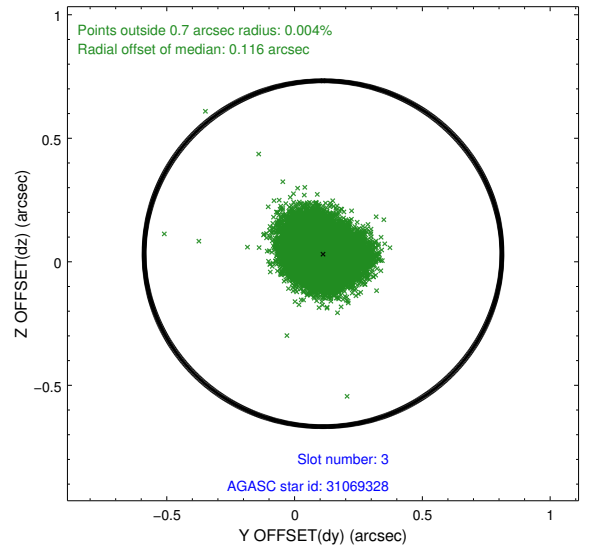
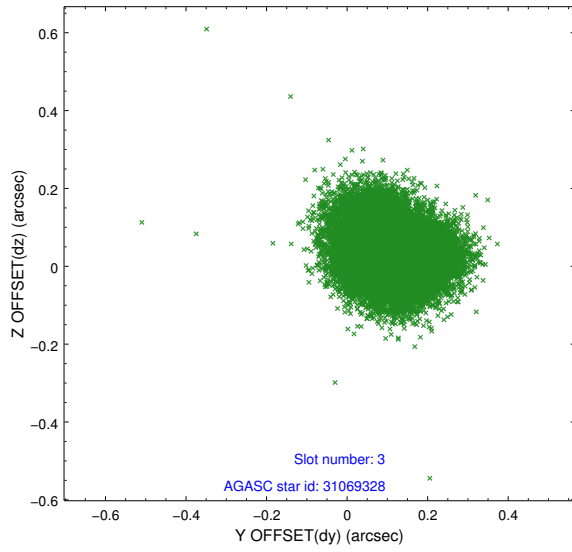
Slot Statistics

slot	status	used	id	mag	n_pts	med_dy	med_dz	dr1	dr2	ra	dec	mean_y	mean_z
0	FID		ACIS-I-1	7.09	11509	0.037	0.032	0.022	0.043	0.000000	0.000000	918.52	-842.04
1	FID		ACIS-I-5	7.08	11509	-0.260	0.038	0.018	0.027	0.000000	0.000000	-1829.94	1055.41
2	FID		ACIS-I-6	7.09	11510	0.130	0.004	0.013	0.021	0.000000	0.000000	384.11	1699.91
3	GUIDE	used	31069328	8.97	22943	0.111	0.033	0.096	0.159	149.407760	1.639418	1957.52	-425.20
4	GUIDE	used	31072656	9.17	23000	0.022	-0.047	0.114	0.177	149.313368	1.815013	1357.90	-818.31
5	GUIDE	used	31076560	9.62	22994	-0.118	-0.021	0.174	0.297	149.884782	2.009277	481.85	1168.85
6	GUIDE	used	31463760	8.80	23008	-0.018	0.175	0.105	0.169	148.998237	2.798749	-2071.95	-2255.66
7	GUIDE	used	32375384	9.94	22979	0.006	-0.131	0.160	0.278	150.238117	2.622063	-1827.76	2240.76

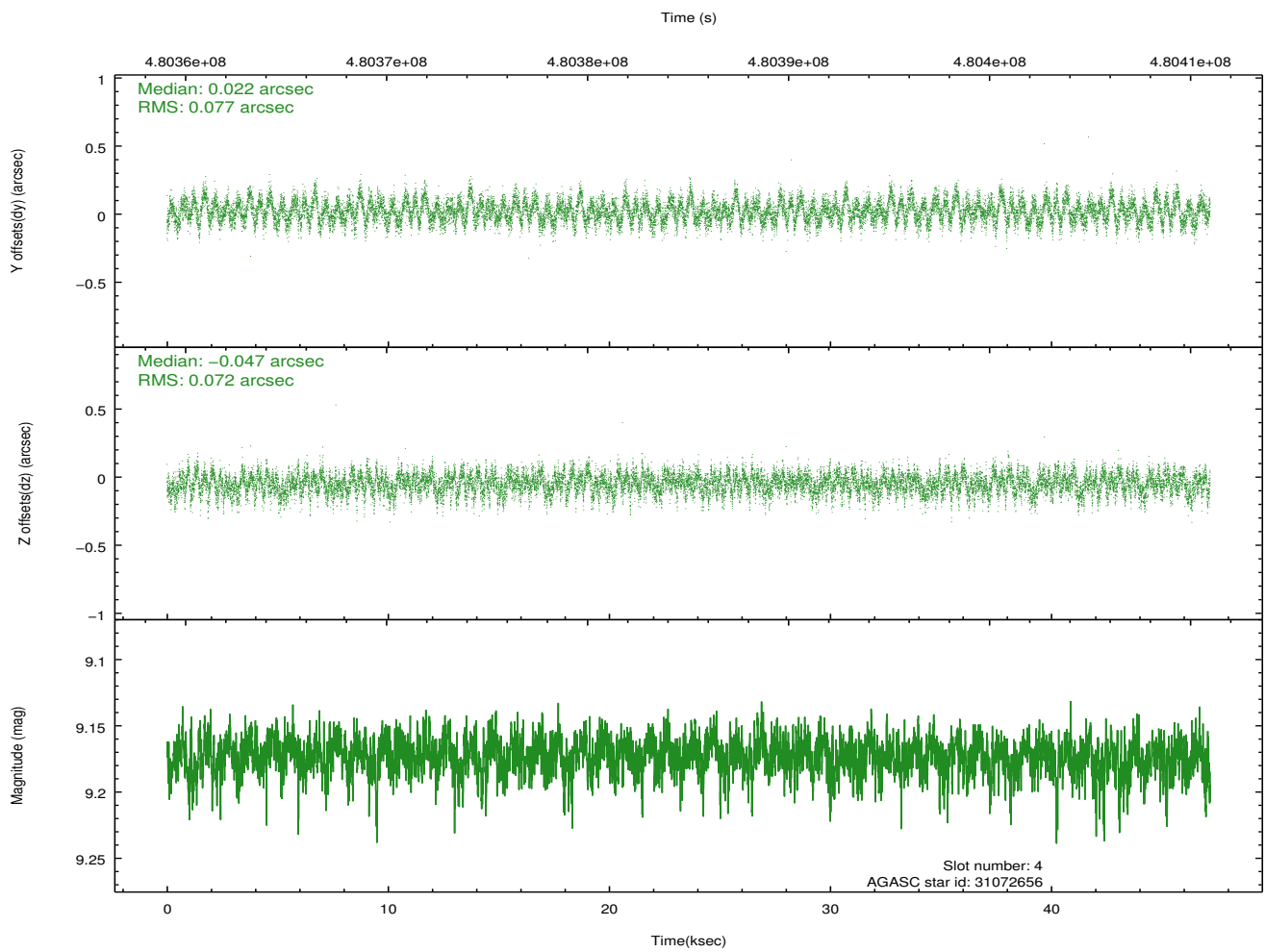
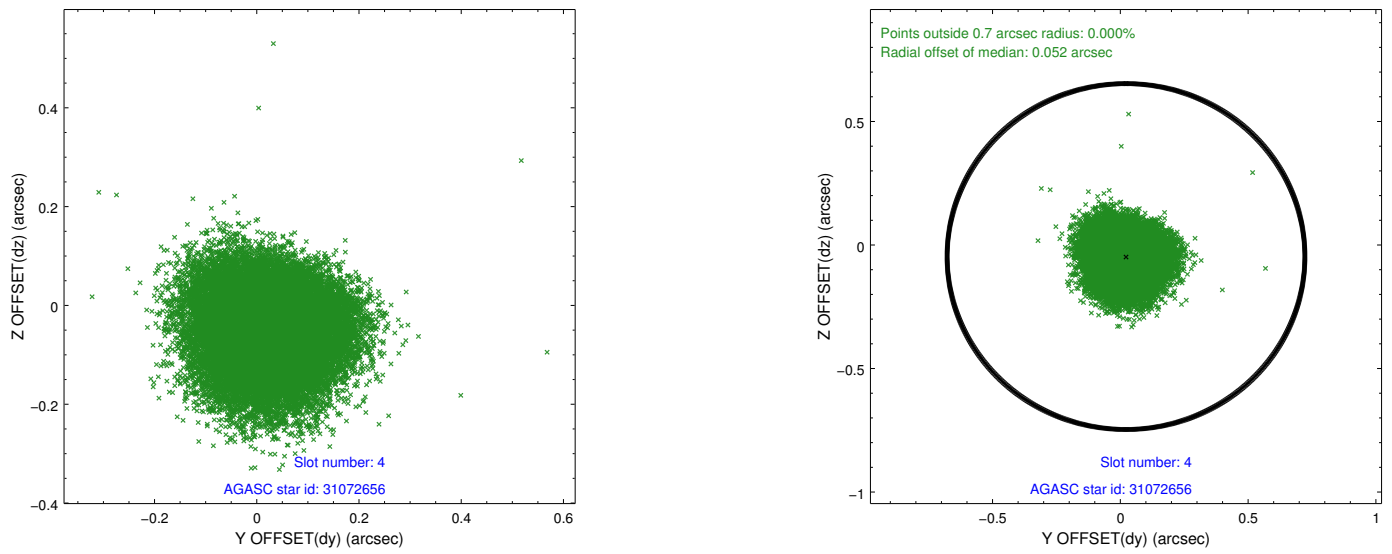
∞

2.4 Star Slots

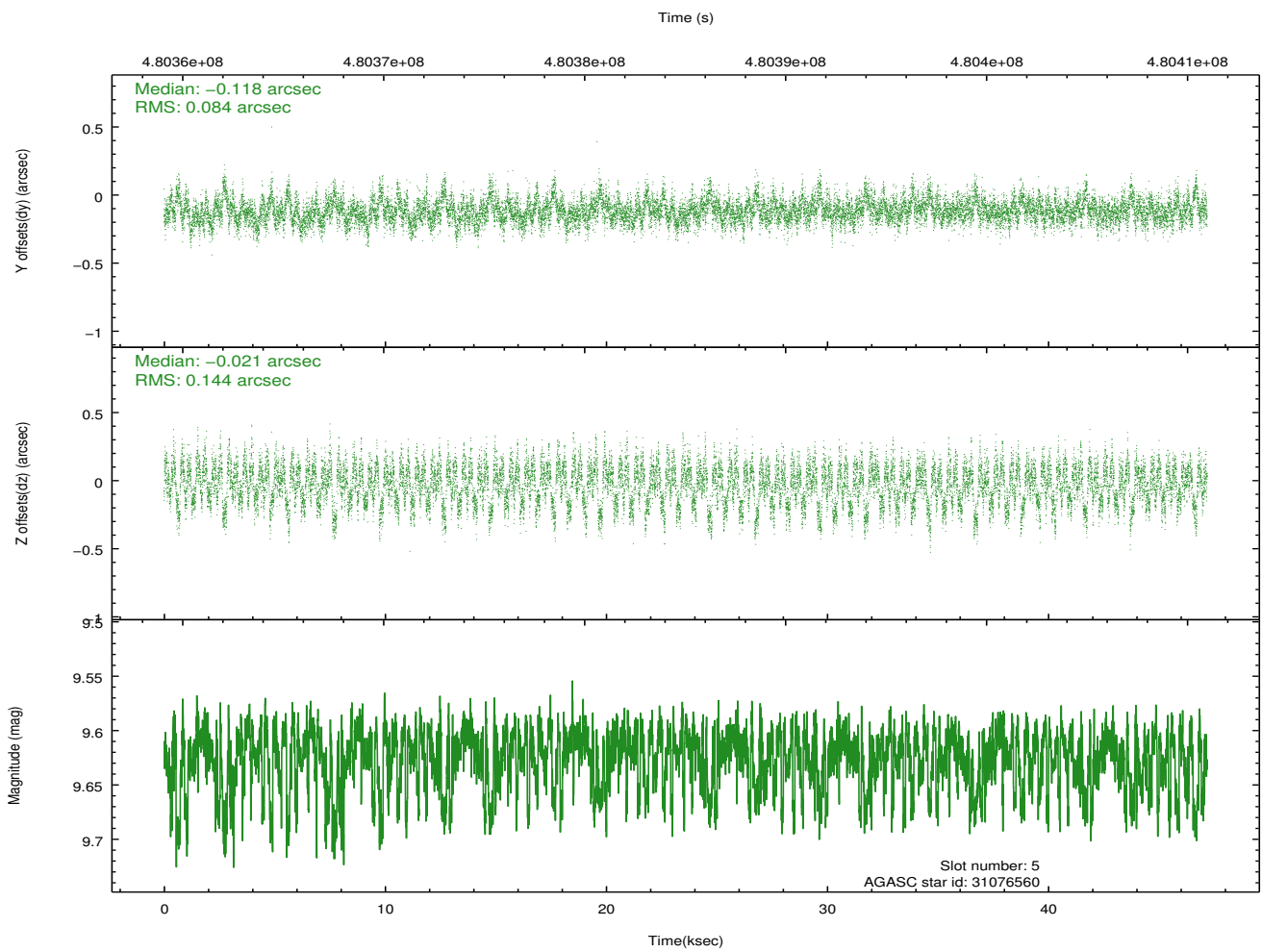
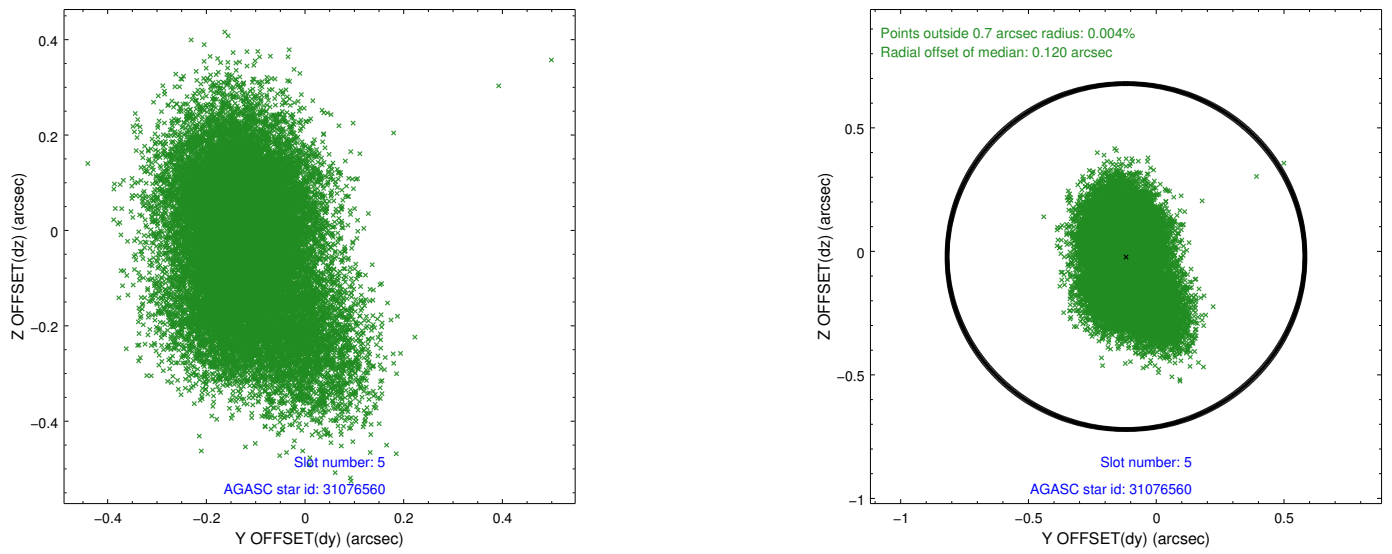
2.4.1 Slot 3



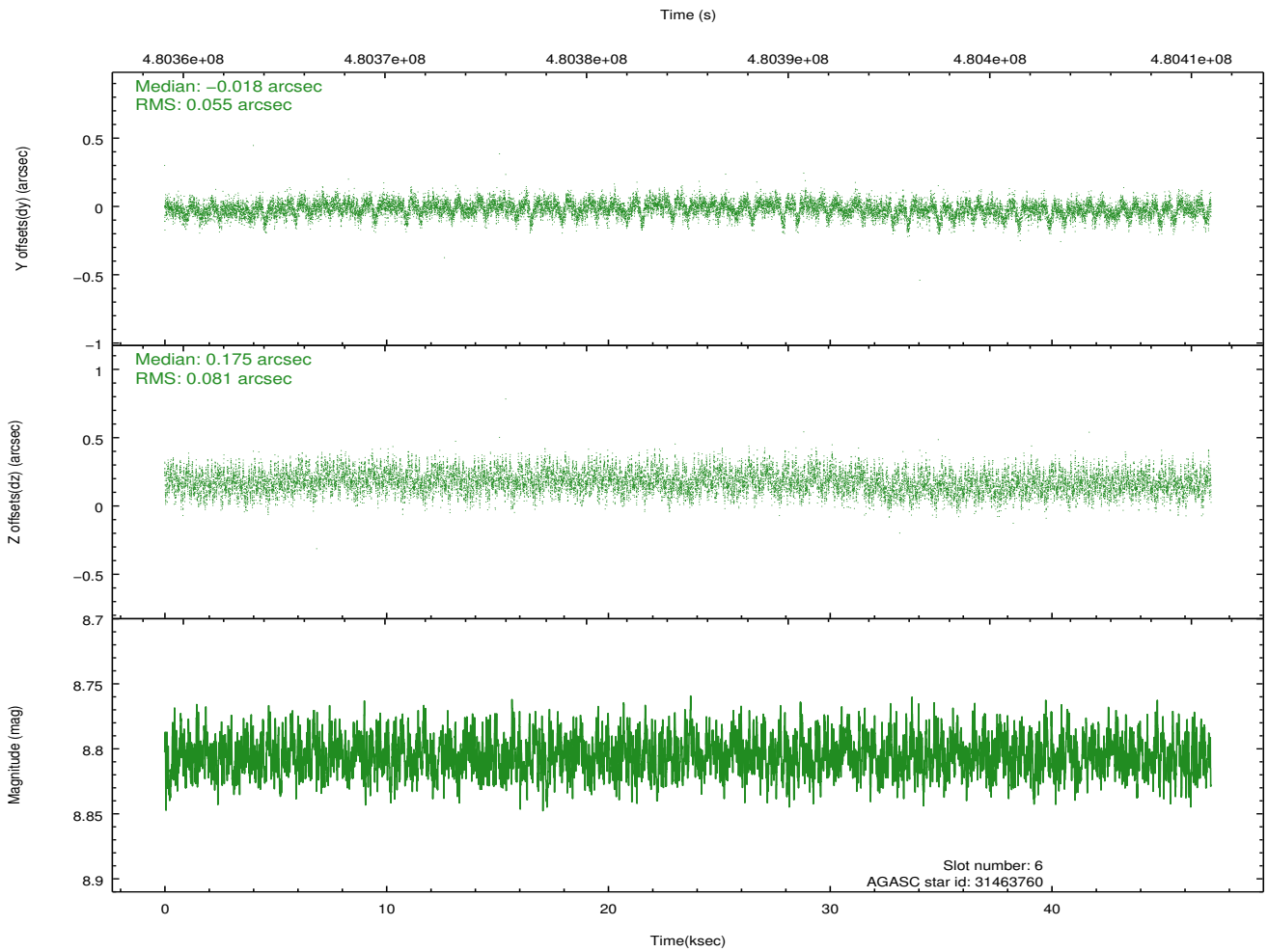
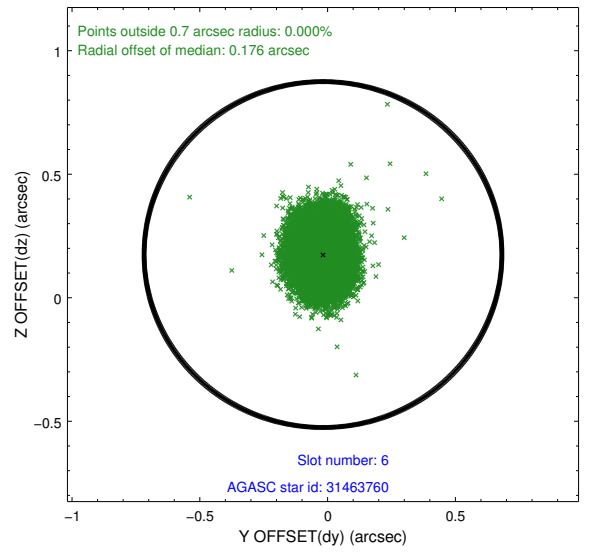
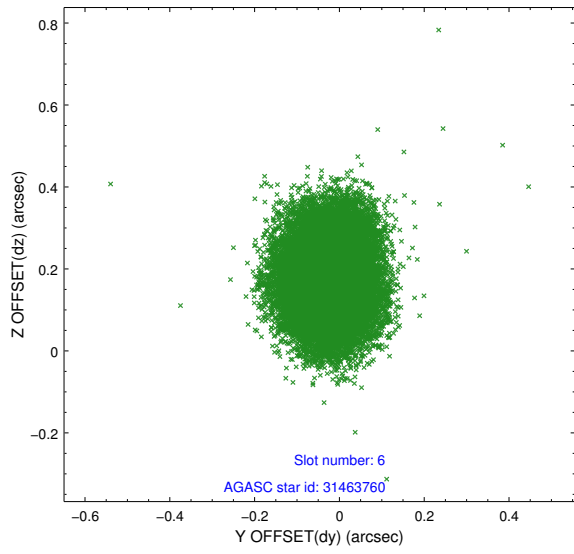
2.4.2 Slot 4



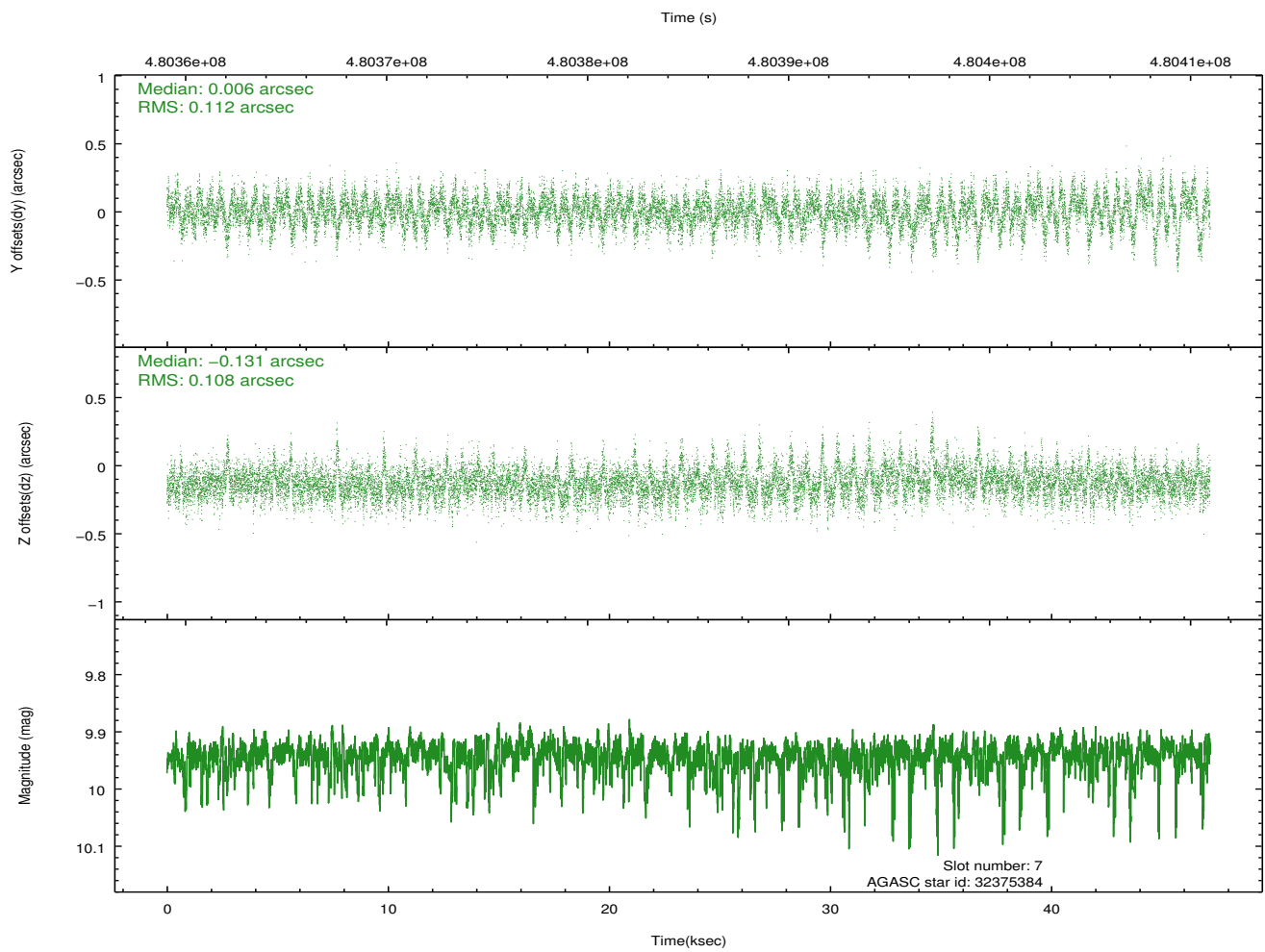
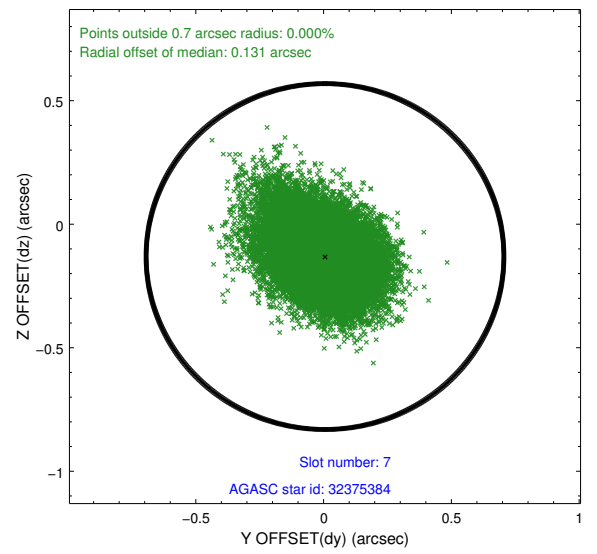
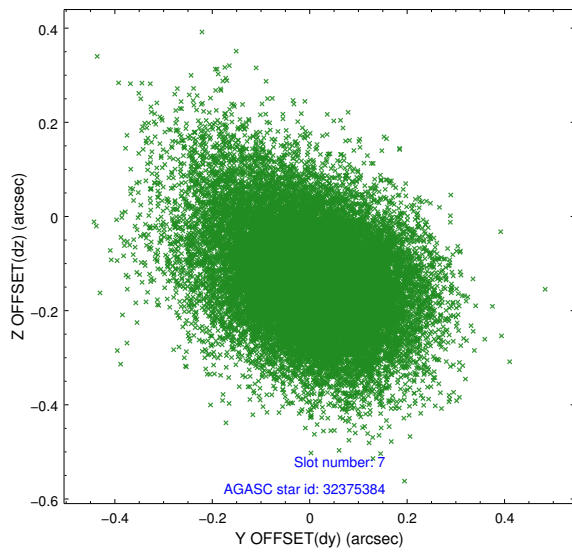
2.4.3 Slot 5



2.4.4 Slot 6

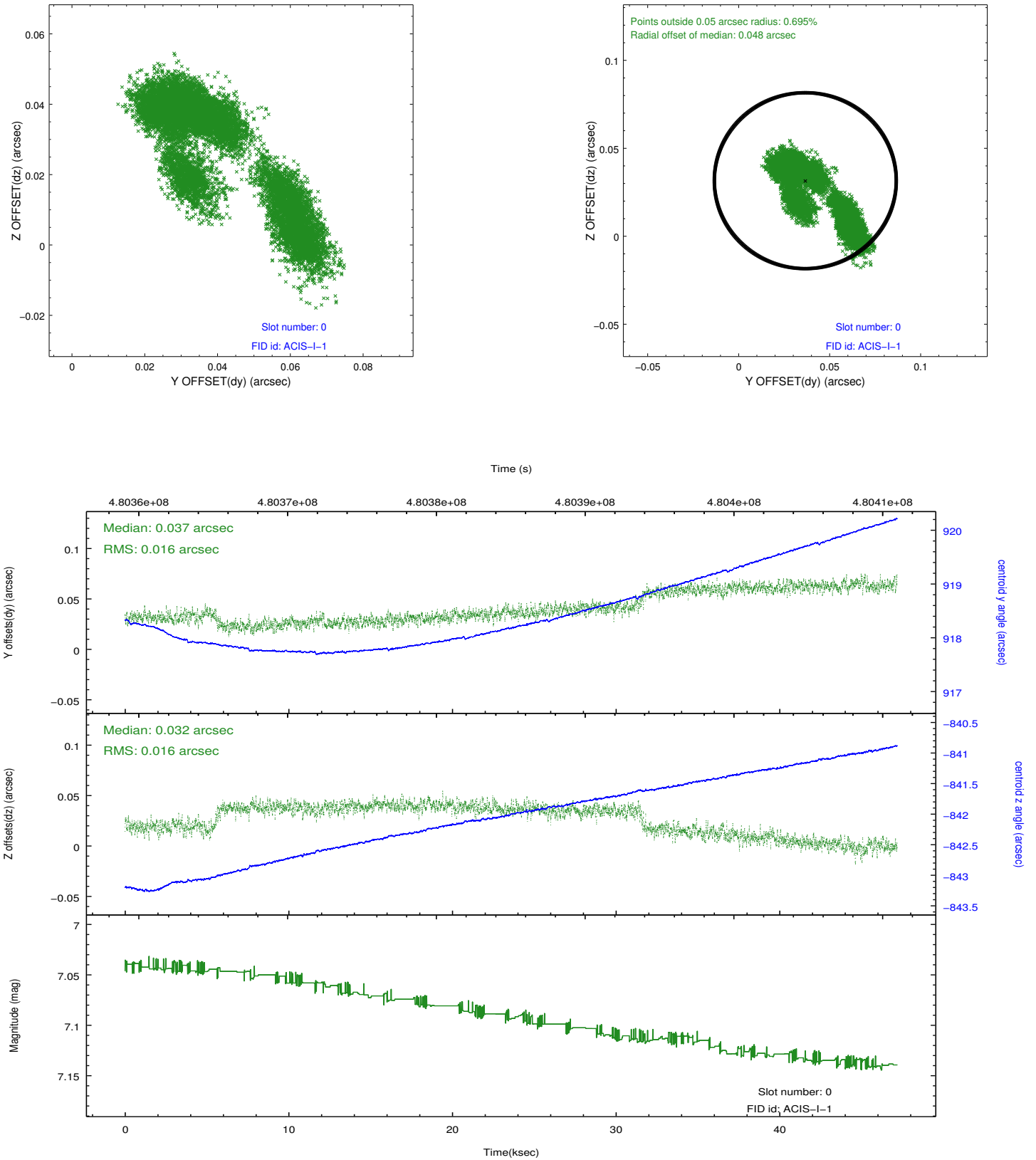


2.4.5 Slot 7

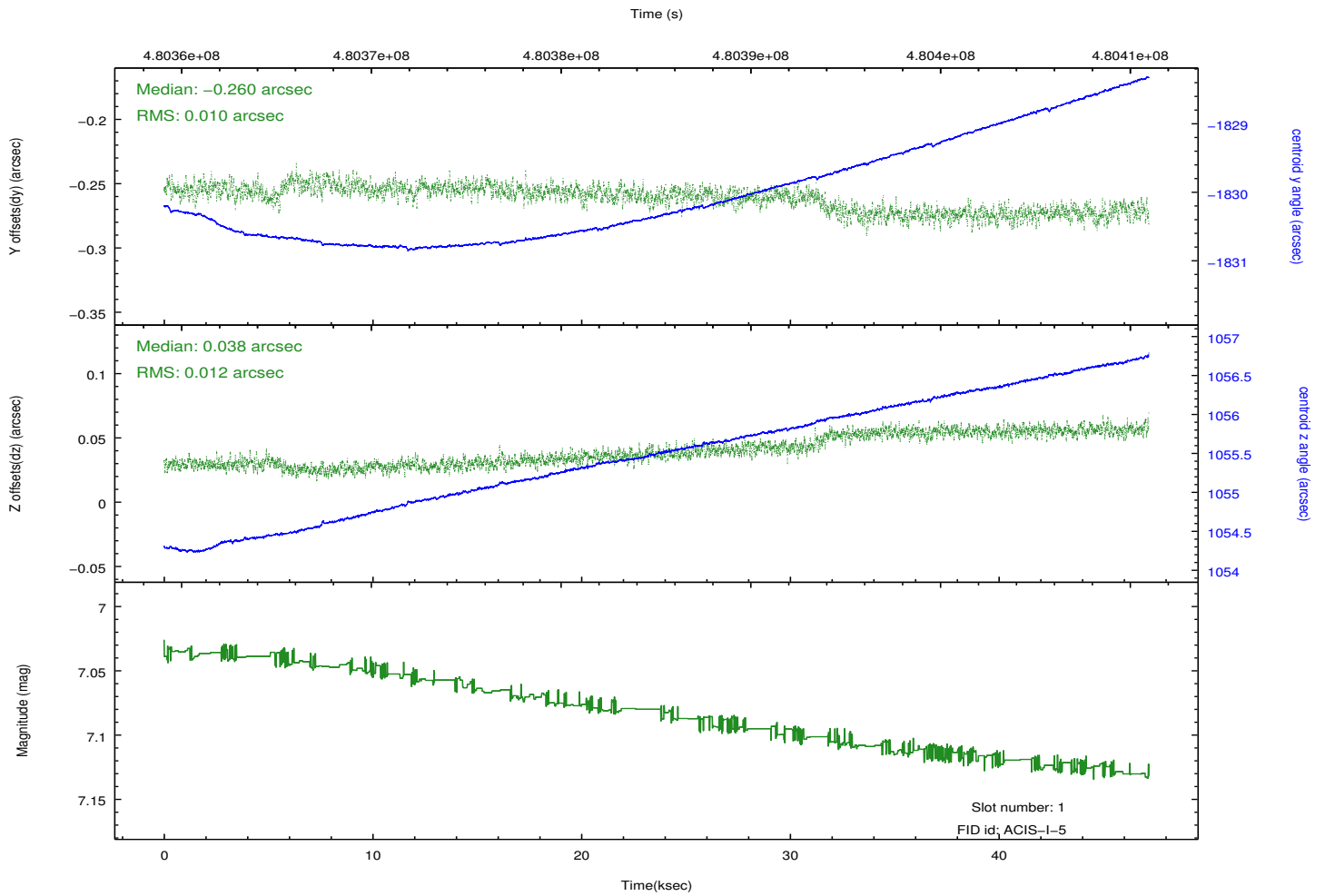
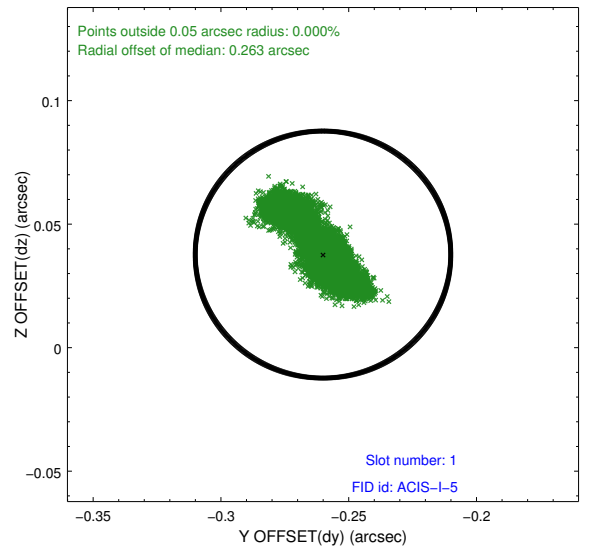
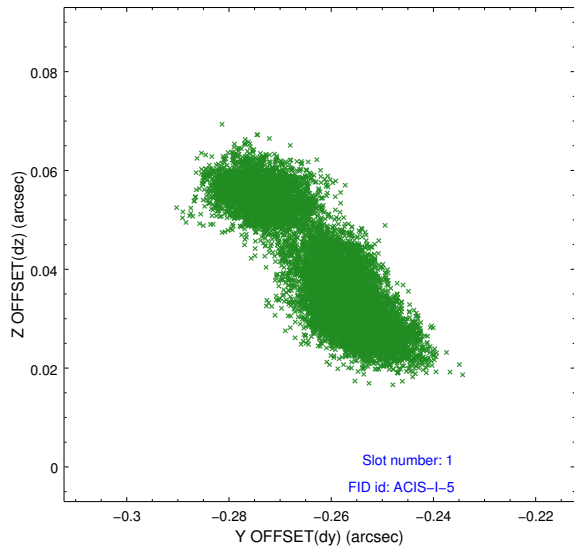


2.5 FID Slots

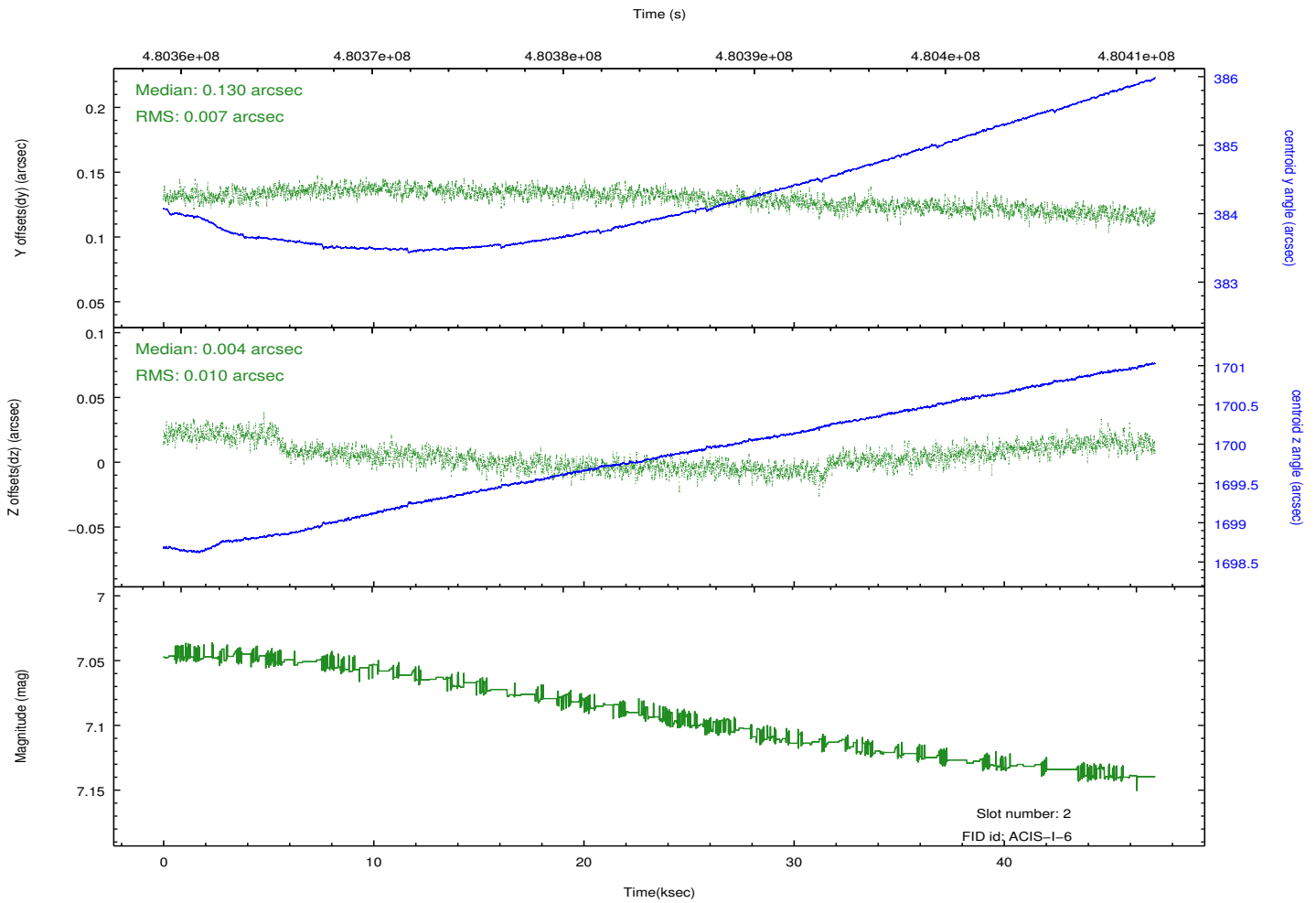
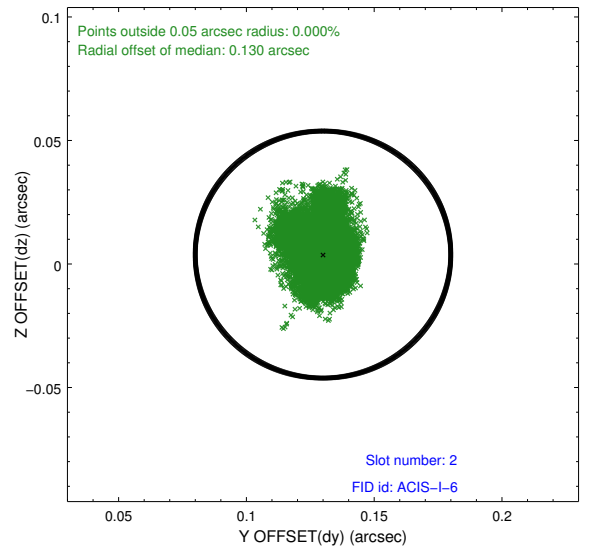
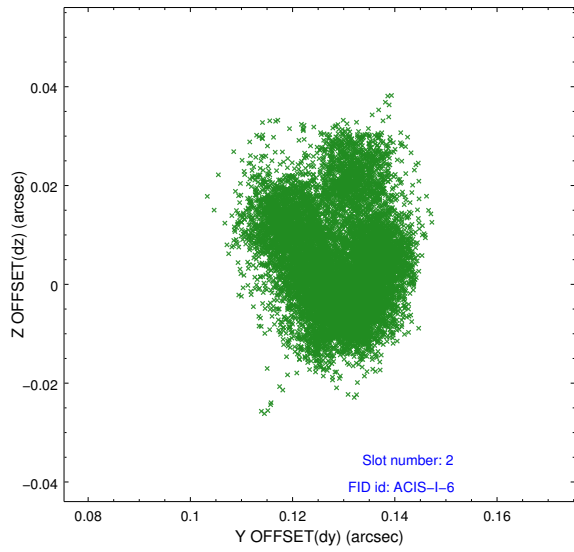
2.5.1 Slot 0



2.5.2 Slot 1



2.5.3 Slot 2



A Summary

A.1 Status

V&V Scientist	Jen Lauer
V&V Date (YYYY-MM-DD)	2014.12.10
V&V Edition	1
V&V Disposition and Status	OK
V&V Charge Time	47.09126014328

A.2 Comments

Roll constraint met.

=====

These data have been reprocessed with new aspect alignment calibration files that correct small mean offsets (up to 0.4 arcsecs) and improve overall astrometric accuracy. The new calibration was determined using data from the time period being reprocessed and was performed using cross-correlation of X-ray sources with radio and optical counterparts.