

# V&V Reference Report

## L2 ASCDS Version : 8.4.5

Observation 1528 - L2 Version 5  
Chandra X-Ray Center

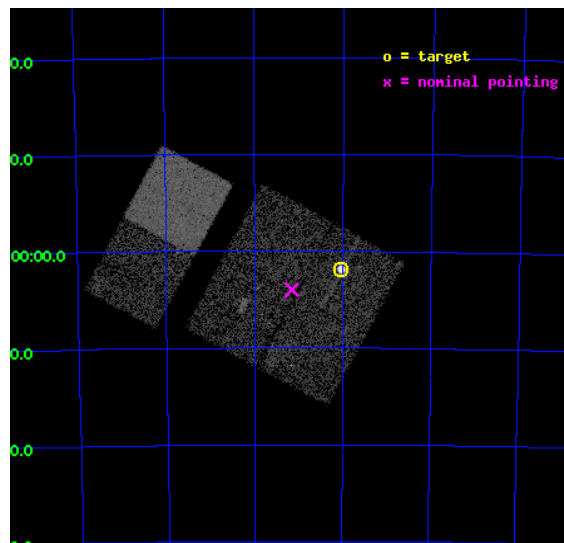
L2 Processing Date : Sep 5 2012

## Contents

<b>1</b>	<b>Front</b>	<b>2</b>
<b>2</b>	<b>OBI</b>	<b>3</b>
2.1	OBI . . . . .	3
2.1.1	Images . . . . .	3
2.1.2	Bias . . . . .	3
2.1.3	Parameters . . . . .	4
2.1.4	Events . . . . .	4
2.2	Compared Parameters . . . . .	5
2.3	Aspect . . . . .	6
2.4	Star Slots . . . . .	9
2.4.1	Slot 3 . . . . .	9
2.4.2	Slot 4 . . . . .	10
2.4.3	Slot 5 . . . . .	11
2.4.4	Slot 6 . . . . .	12
2.4.5	Slot 7 . . . . .	13
2.5	FID Slots . . . . .	14
2.5.1	Slot 0 . . . . .	14
2.5.2	Slot 1 . . . . .	15
2.5.3	Slot 2 . . . . .	16
<b>A</b>	<b>Summary</b>	<b>17</b>
A.1	Status . . . . .	17
A.2	Comments . . . . .	17

# 1 Front

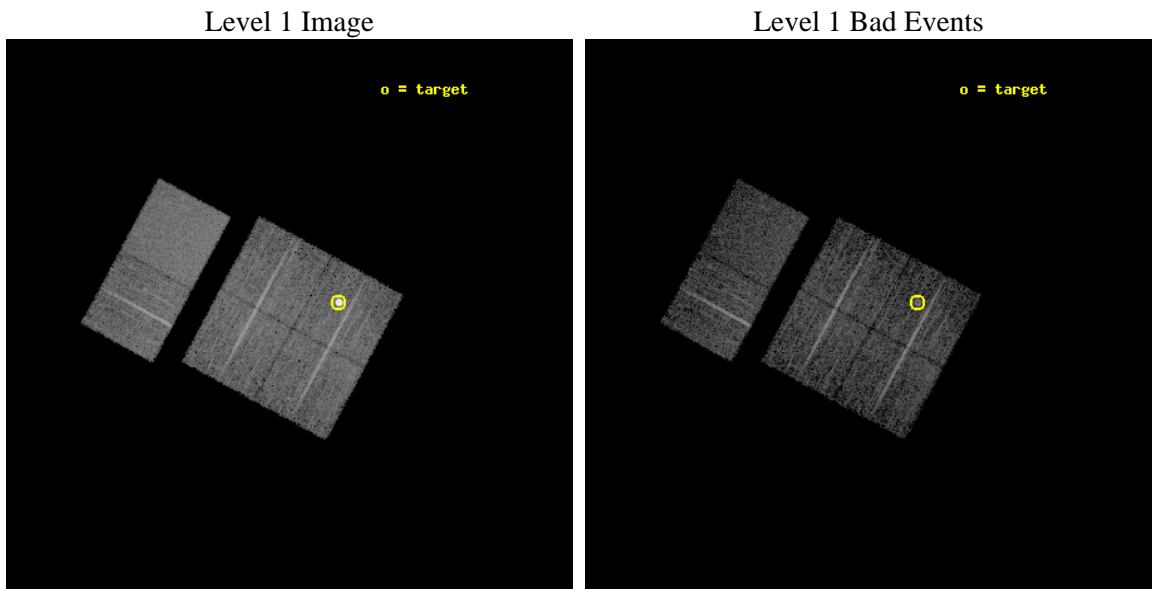
seq_num	590137	Sequence number
obs_id	1528	Observation id
title	ACIS CALIBRATION OBSERVATION OF THE SUPERNOVA REMNANT E0102-72 (DEC 2000)	Proposal title
observer	Dr. CXC Calibration	Principal investigator
object	E0102-72.3 [Chip I1, T=120, Offsets=-4,-3,0]	Source name
dtcycle	0	&#160
cycle	P	events from which exps? Prim/Second/Both
ra_targ	16.01	Observer's specified target RA [deg]
dec_targ	-72.032028	Observer's specified target Dec [deg]
ra_nom	16.28891019043	Nominal RA [deg]
dec_nom	-72.066643821124	Nominal Dec [deg]
roll_nom	298.44345571821	Nominal Roll [deg]
revision	5	Processing version of data
ontime	6960.0000064671	Sum of GTIs [s]
livetime	6871.8682955764	Livetime [s]
ontime0	6960.0000064671	Sum of GTIs [s]
ontime1	6960.0000064671	Sum of GTIs [s]
ontime2	6960.0000064671	Sum of GTIs [s]
ontime3	6960.0000064671	Sum of GTIs [s]
ontime6	6960.0000064671	Sum of GTIs [s]
ontime7	6960.0000064671	Sum of GTIs [s]
l2events	66886	Number of level 2 events



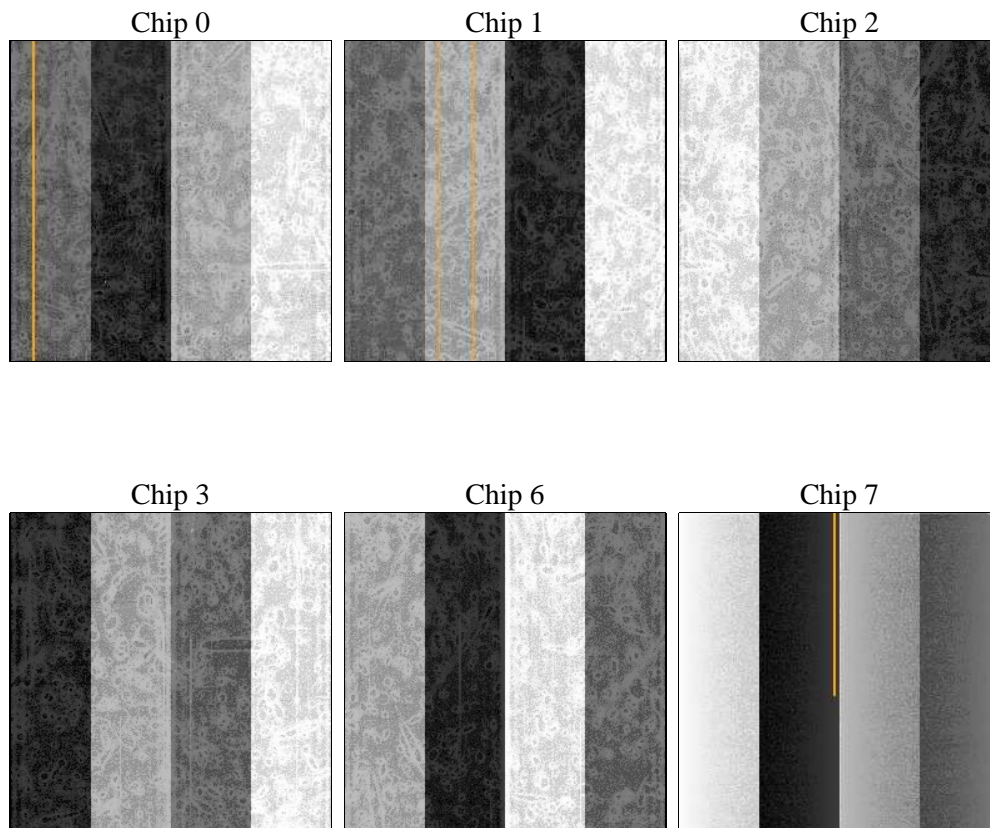
## 2 OBI

### 2.1 OBI

#### 2.1.1 Images



#### 2.1.2 Bias



### 2.1.3 Parameters

obi_num	0	Obi number	sched_exp_time	7200.000000	[s] Scheduled observation exposure time
ascdsver	8.4.5	Processing system revision	ontime	6960.0000064671	Sum of GTIs [s]
caldbver	4.5.1.1	&#160	ontime0	6960.0000064671	Sum of GTIs [s]
date	2012-09-05T11:40:46	Date and time of file creation	ontime1	6960.0000064671	Sum of GTIs [s]
revision	5	Processing version of data	ontime2	6960.0000064671	Sum of GTIs [s]
			ontime3	6960.0000064671	Sum of GTIs [s]
			ontime6	6960.0000064671	Sum of GTIs [s]
			ontime7	6960.0000064671	Sum of GTIs [s]
			l1events	283324	Number of level 1 events

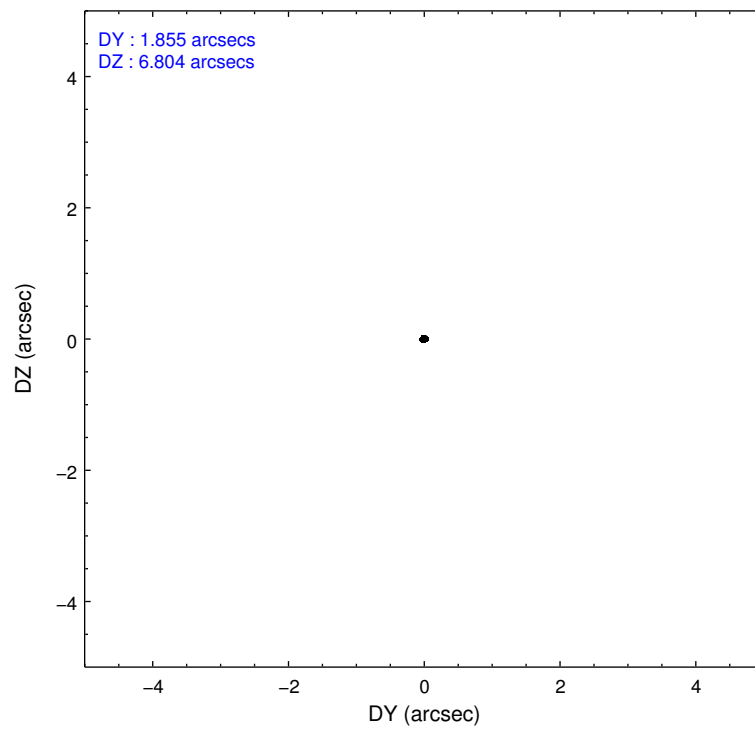
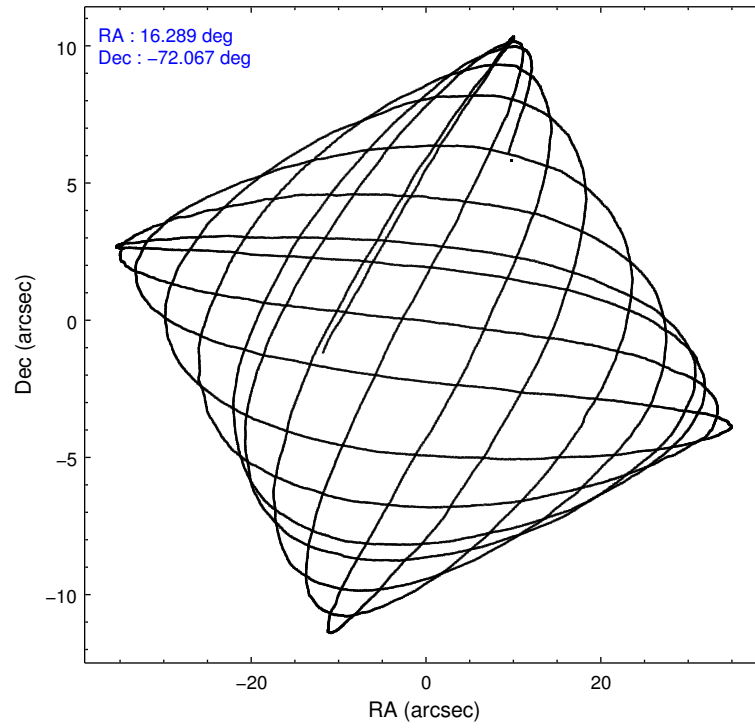
### 2.1.4 Events

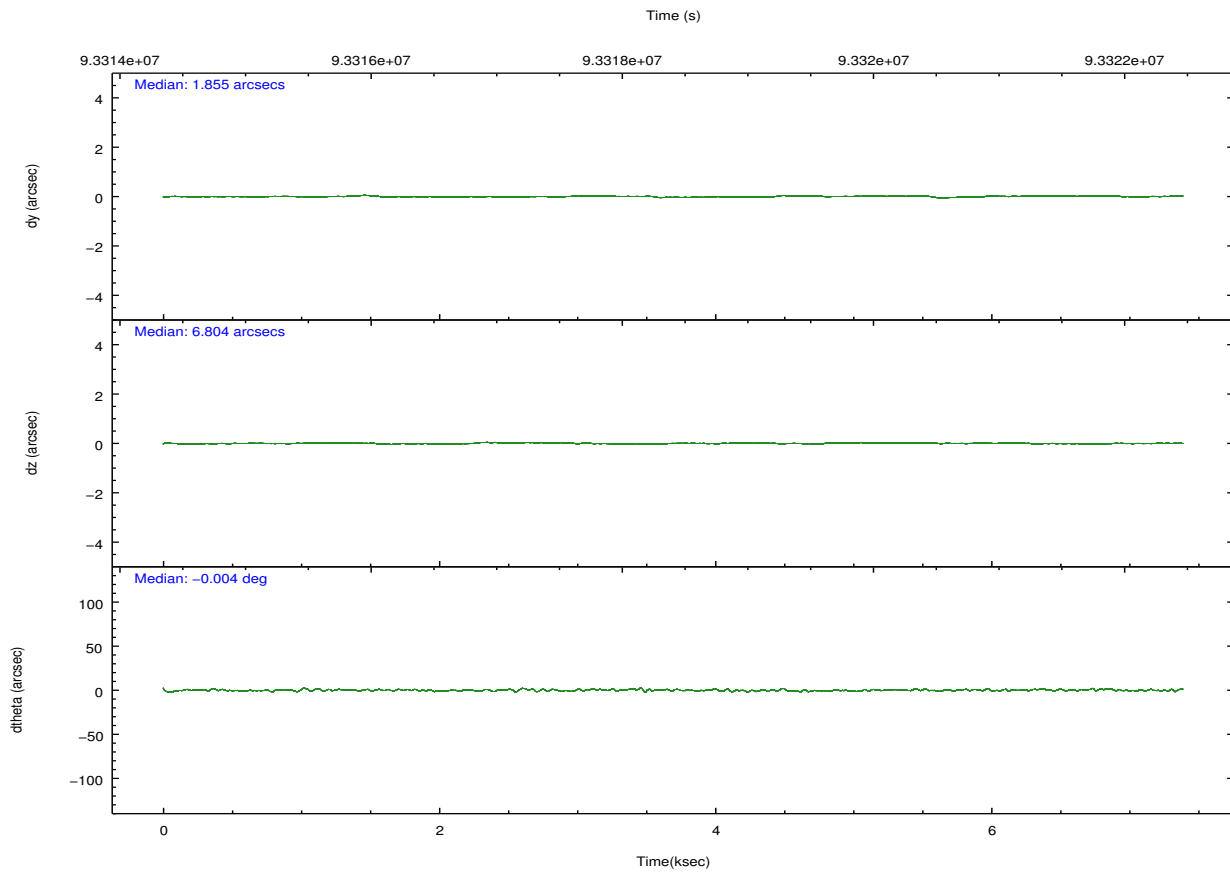
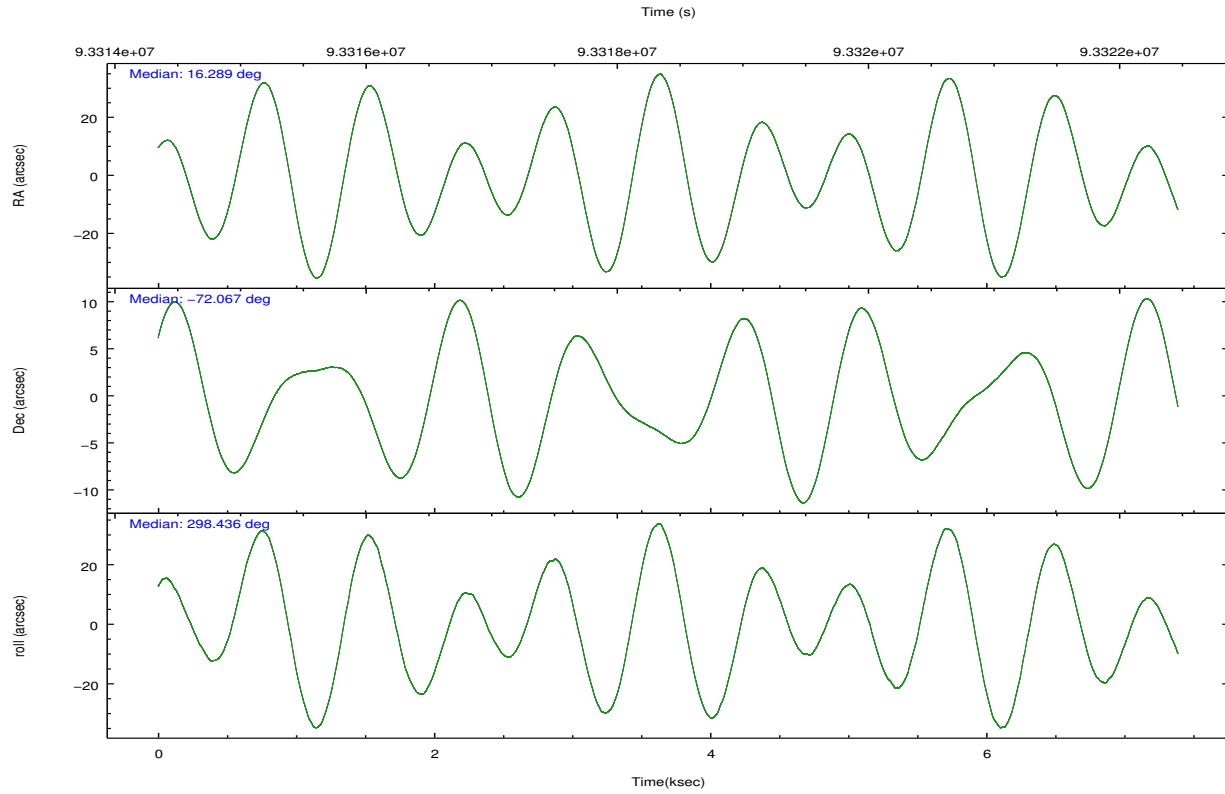
	ccd 0	ccd 1	ccd 2	ccd 3	ccd 6	ccd 7		ccd 0	ccd 1	ccd 2	ccd 3	ccd 6	ccd 7
level 1 events	38444	64347	42776	41385	43851	52521	grade 0 events	2614	24286	2480	2172	2069	2210
rejected events	33039	34430	37610	36495	38891	30526		6%	37%	5%	5%	4%	4%
rejected %	85%	53%	87%	88%	88%	58%	grade 1 events	24	204	21	13	19	43
								0%	0%	0%	0%	0%	0%
							grade 2 events	1034	2708	1013	967	968	4393
								2%	4%	2%	2%	2%	8%
							grade 3 events	476	960	487	482	483	1912
								1%	1%	1%	1%	1%	3%
							grade 4 events	442	913	460	451	480	1980
								1%	1%	1%	1%	1%	3%
							grade 5 events	1503	1632	1379	1559	1759	4944
								3%	2%	3%	3%	4%	9%
							grade 6 events	839	1070	730	818	960	11500
								2%	1%	1%	1%	2%	21%
							grade 7 events	31512	32574	36206	34923	37113	25539
								81%	50%	84%	84%	84%	48%

## 2.2 Compared Parameters

Parameter	Planned	Actual	Parameter	Planned	Actual
Instrument	ACIS	ACIS	Obspar format version number	7	7
Detector	ACIS-012367	ACIS-012367	Obspar file type	PREDICTED	ACTUAL
Grating	NONE	NONE	Obspar update status	NONE	UPDATED
Data mode	FAINT	FAINT	Number of optional ACIS chips dropped	0	0
Observation mode	POINTING	POINTING	On-chip summing requested	N	N
[deg] Pointing RA	16.212916	16.28891019043036	Subarray requested	NONE	NONE
[deg] Pointing Dec	-72.052313	-72.06664382112392	Alternating exposures requested	N	N
[deg] Pointing Roll	298.162483	298.4434557182057	[s] Primary exposure time	0.000000	3.2
[s] Window start time (MET)	92016064.184000	92016064.184000			
[s] Window stop time (MET)	94608064.184000	94608064.184000			
[mm] SIM focus pos	-0.782348	-0.7809083437167272			
[mm] SIM defocus	0	0.001439871863259334			
[mm] SIM translation stage pos	-233.592463	-233.5874344608287			
[mm] SIM translation stage offset	0	-0.005018542100998502			
[s] Observation start time (MET)	93314897.184000	93314521.58596399			
Observation start date	2000-12-16T00:47:13	2000-12-16T00:42:01			
[s] Observation end time (MET)	93322097.184000	93322231.636259			
Observation end date	2000-12-16T02:47:13	2000-12-16T02:50:31			
Read mode	TIMED	TIMED			

## 2.3 Aspect



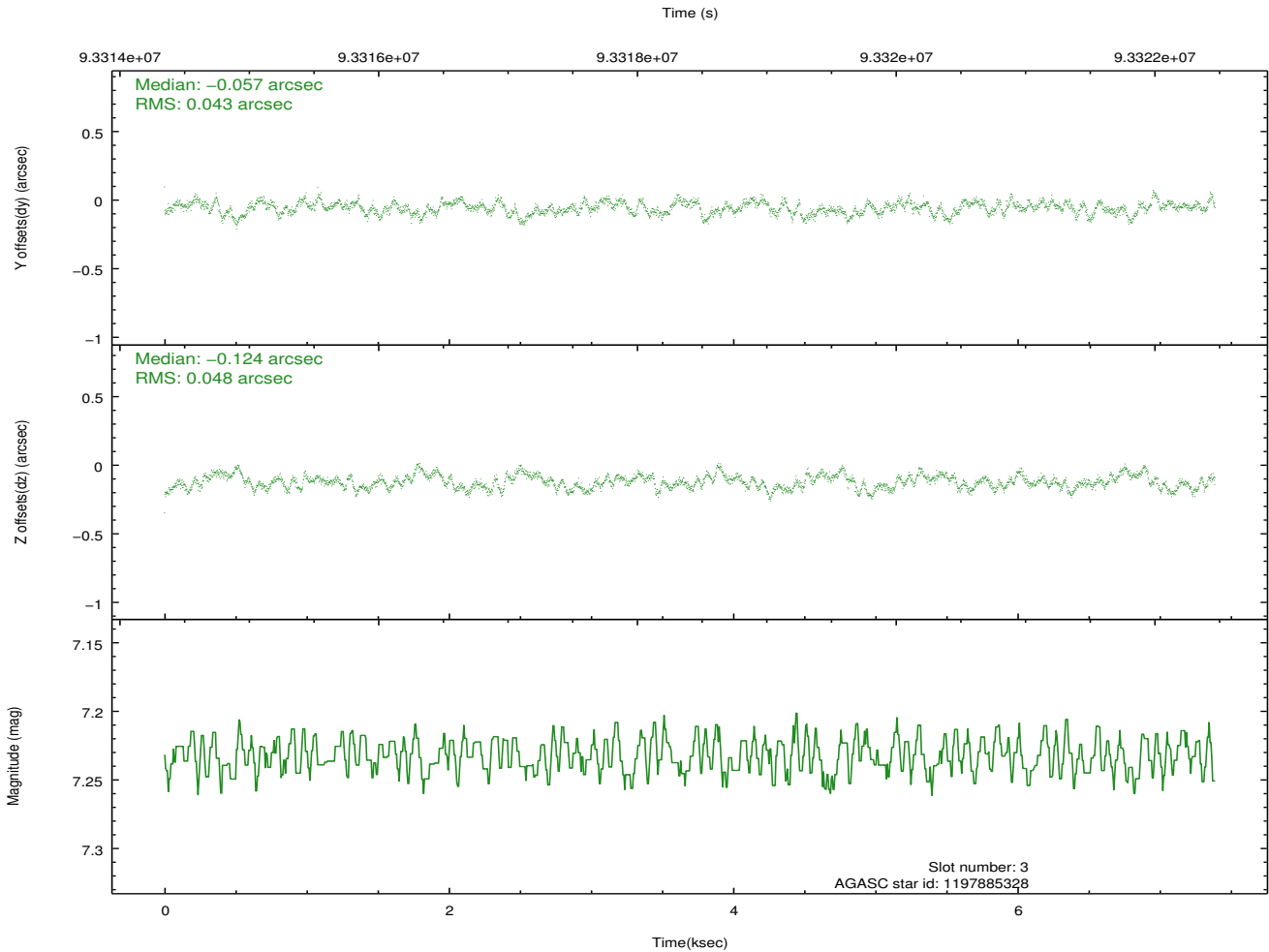
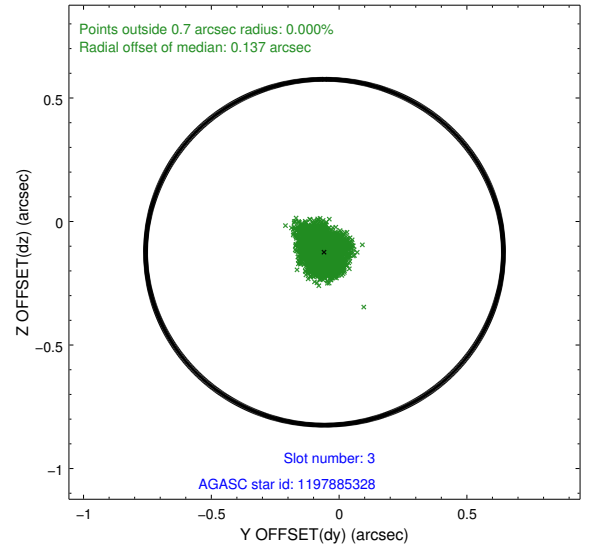
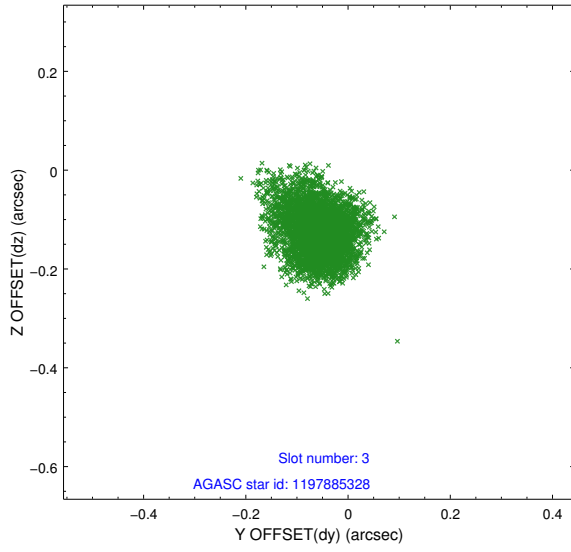


### Slot Statistics

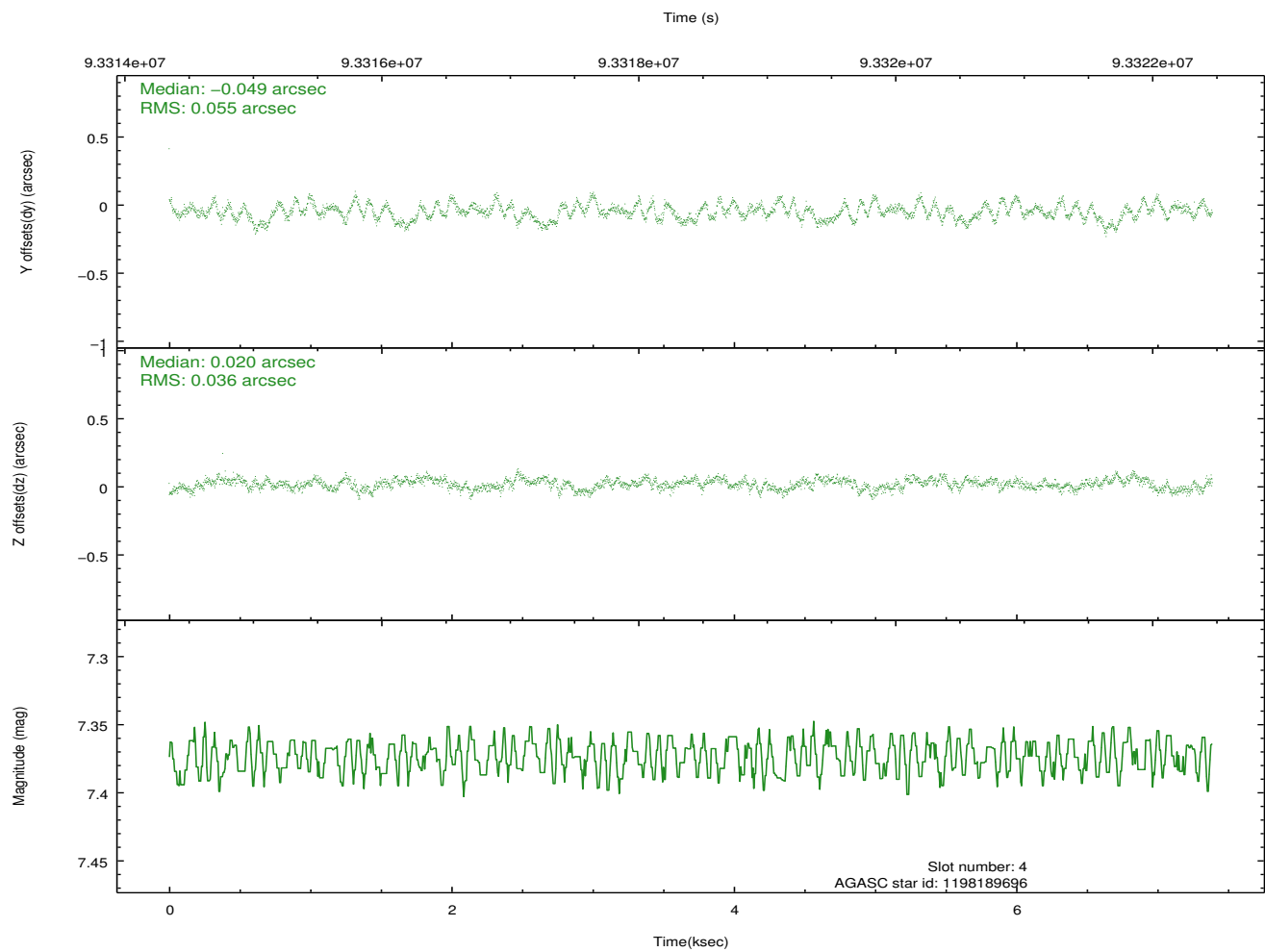
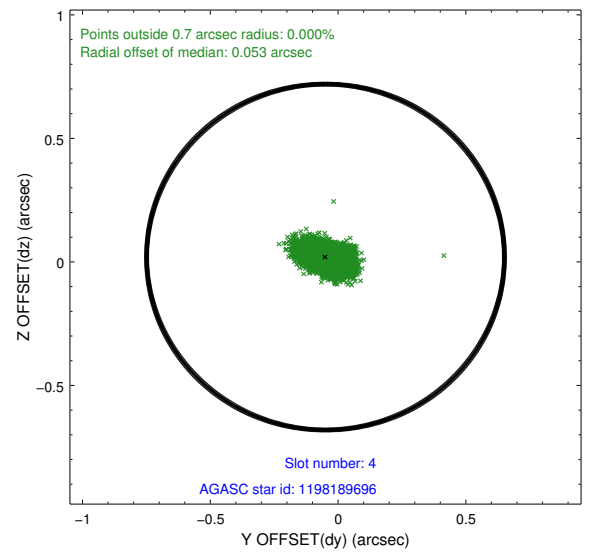
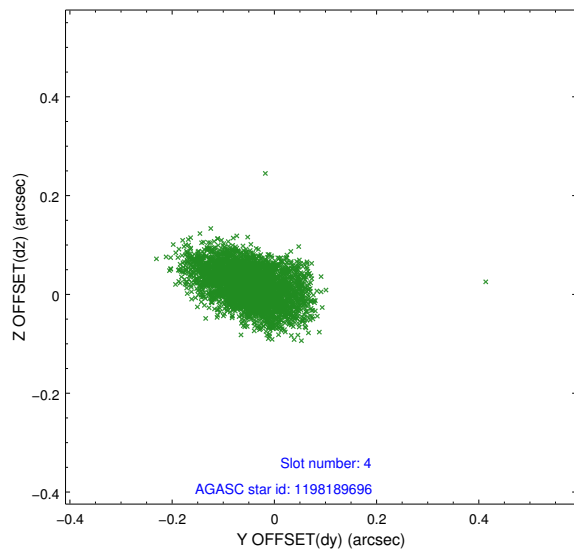
slot	status	id	mag	n_pts	med_dy	med_dz	dr1	dr2	ra	dec	mean_y	mean_z
0	FID	ACIS-I-2	7.16	1802	-0.072	-0.001	0.006	0.011	0.000000	0.000000	-756.25	-836.58
1	FID	ACIS-I-4	7.18	1802	-0.021	0.059	0.007	0.013	0.000000	0.000000	2157.46	1069.34
2	FID	ACIS-I-6	7.26	1802	-0.006	0.005	0.009	0.016	0.000000	0.000000	404.82	1712.31
3	GUIDE	1197885328	7.23	3604	-0.057	-0.124	0.069	0.108	16.283090	-71.733943	-973.19	610.38
4	GUIDE	1198189696	7.37	3604	-0.049	0.020	0.070	0.115	15.223750	-72.697522	1555.59	-2033.93
5	GUIDE	1197884536	8.50	3604	0.006	0.033	0.070	0.113	17.160729	-71.835289	-179.15	1301.79
6	GUIDE	1197884712	8.29	3605	0.117	0.000	0.071	0.107	16.087398	-72.252690	571.19	-461.73
7	GUIDE	1197878768	9.60	3604	-0.020	0.081	0.203	0.314	16.656786	-71.304581	-2129.93	1720.70

## 2.4 Star Slots

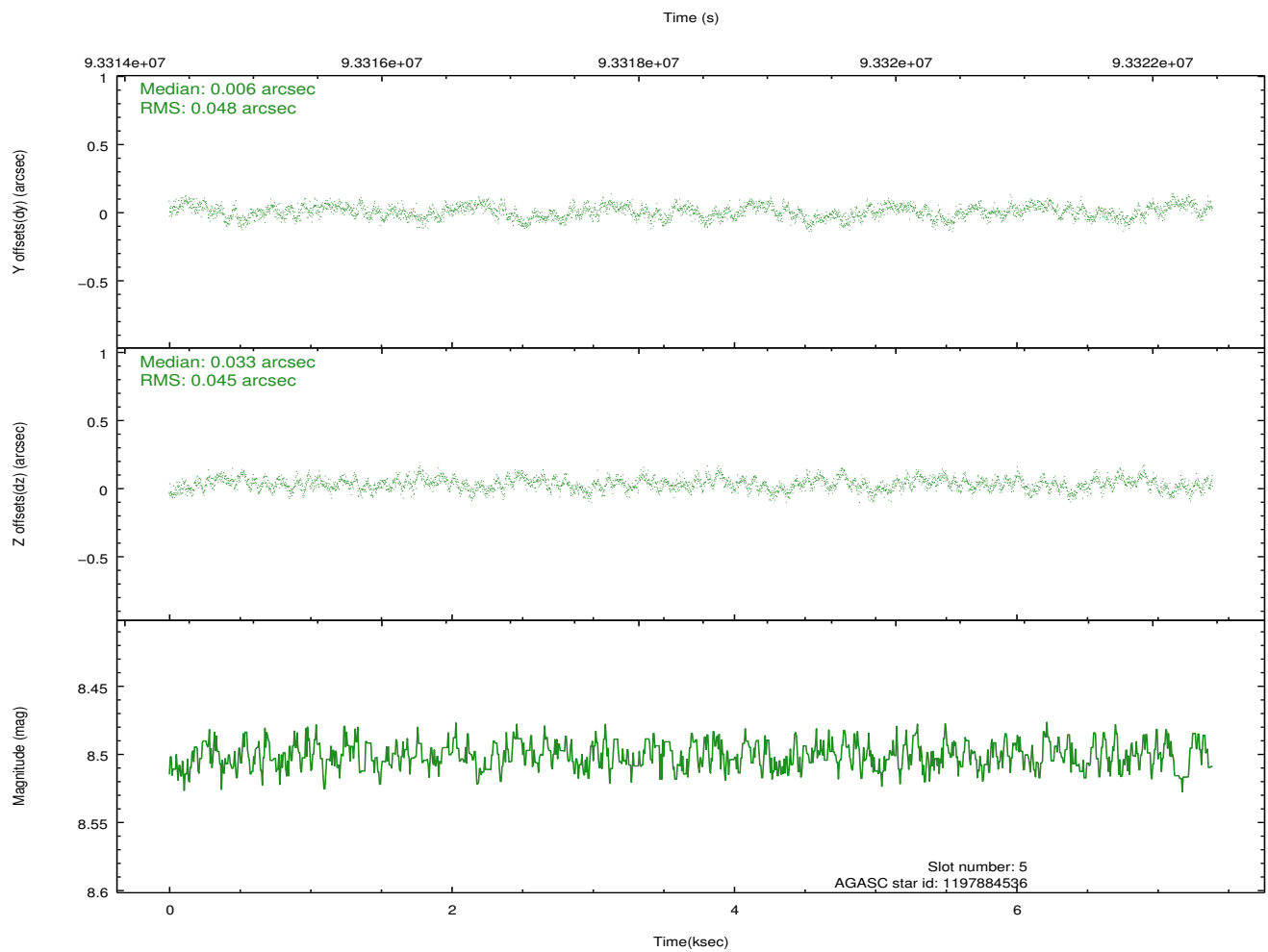
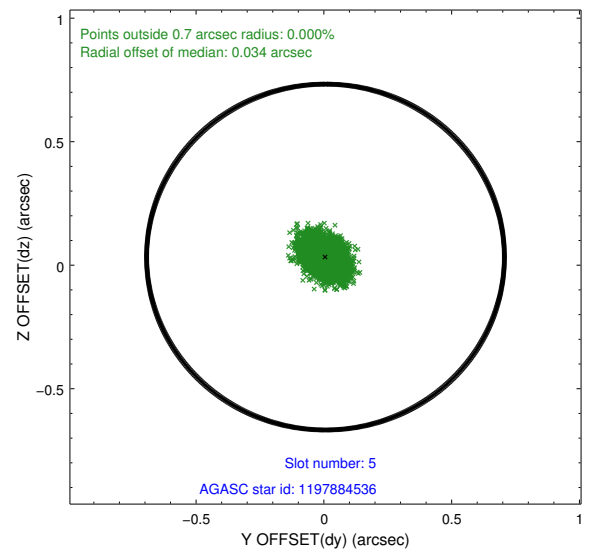
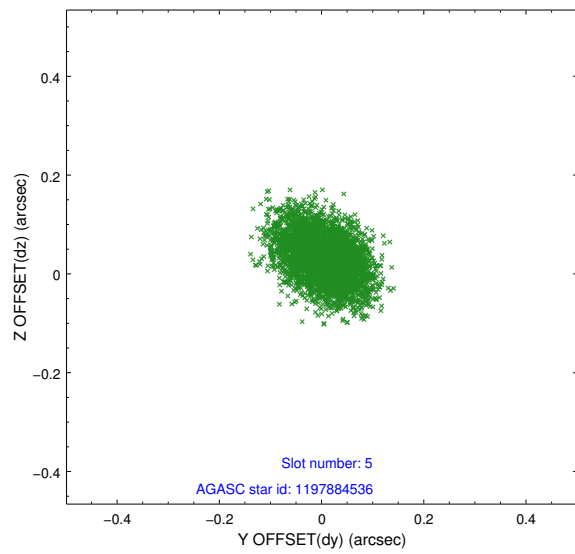
### 2.4.1 Slot 3



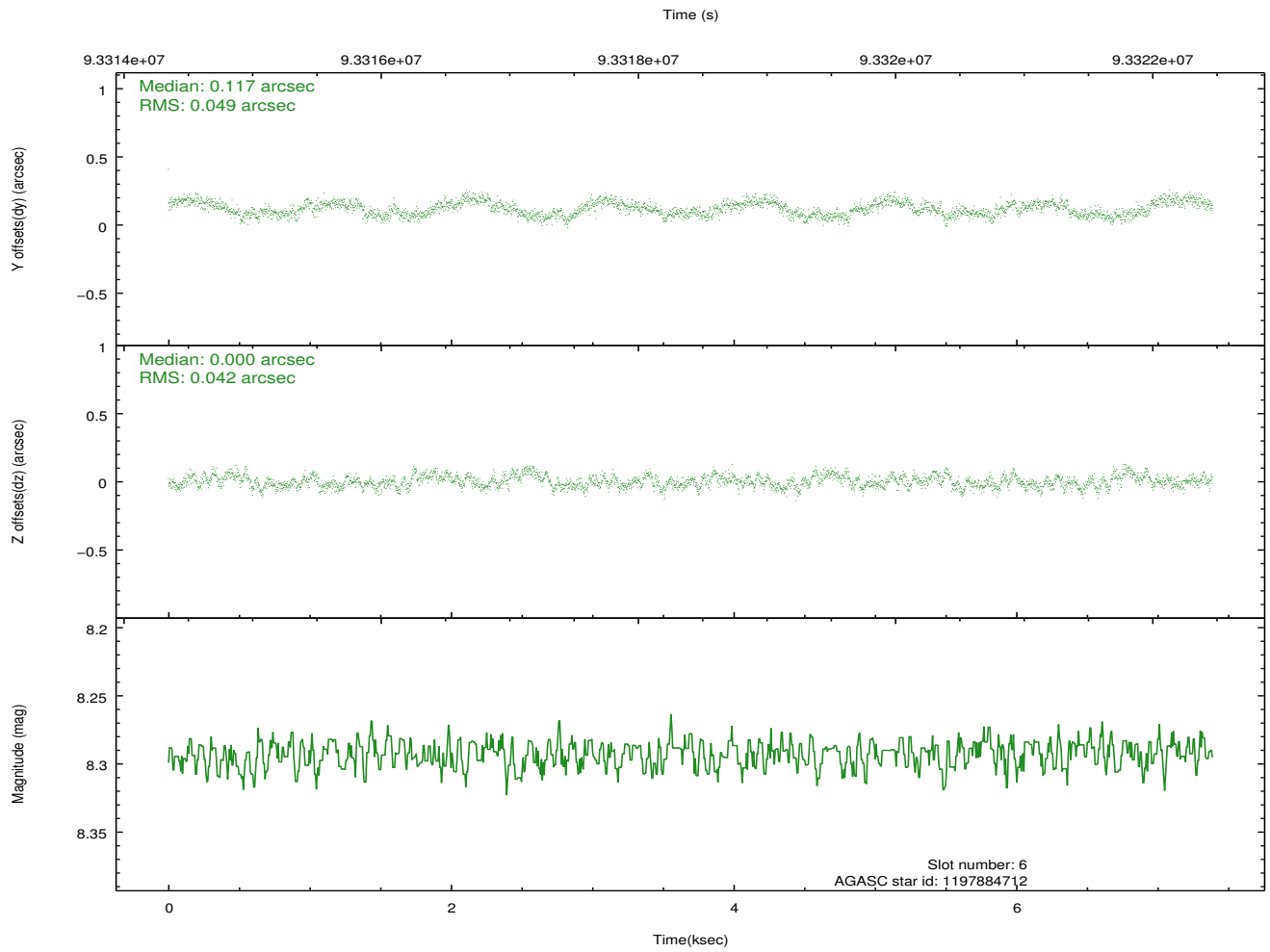
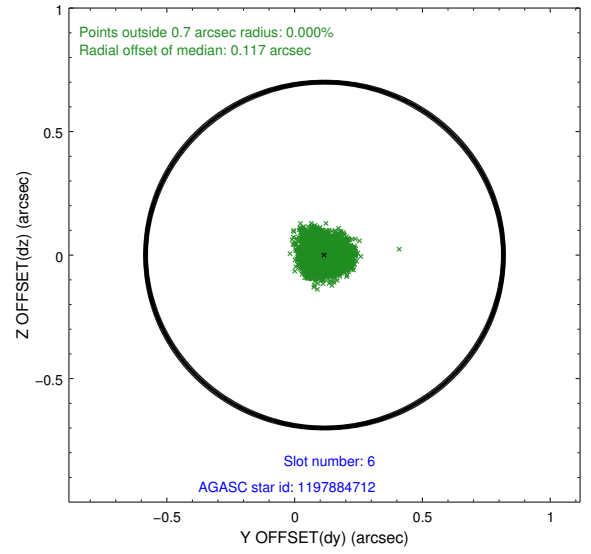
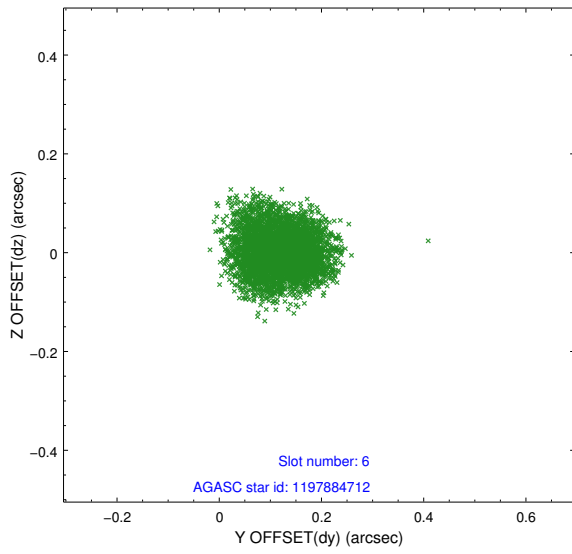
## 2.4.2 Slot 4



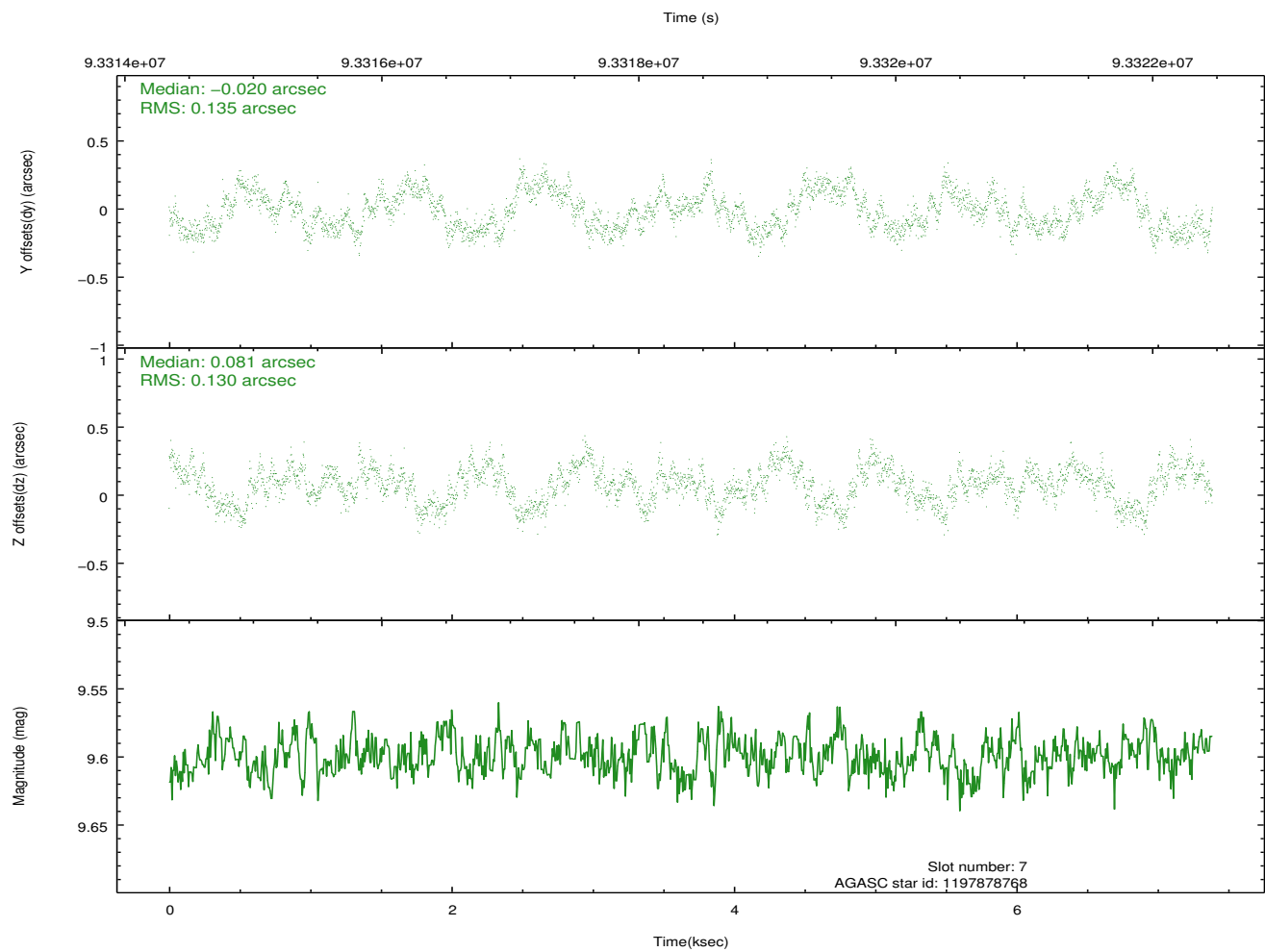
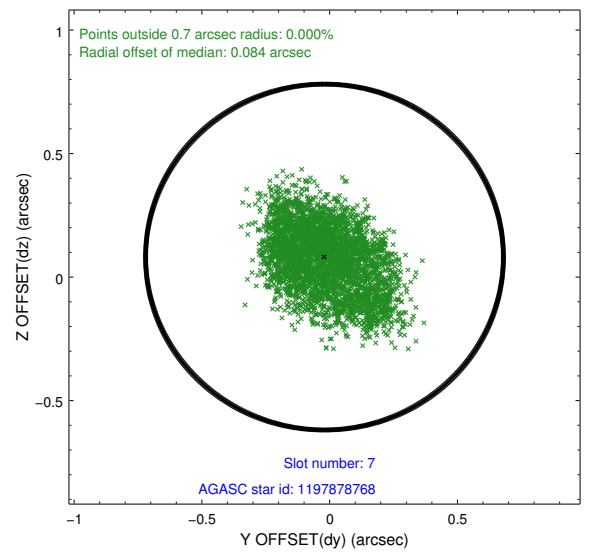
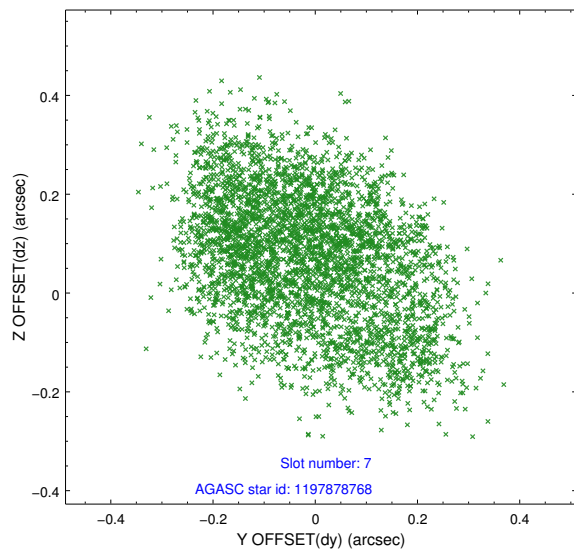
### 2.4.3 Slot 5



### 2.4.4 Slot 6

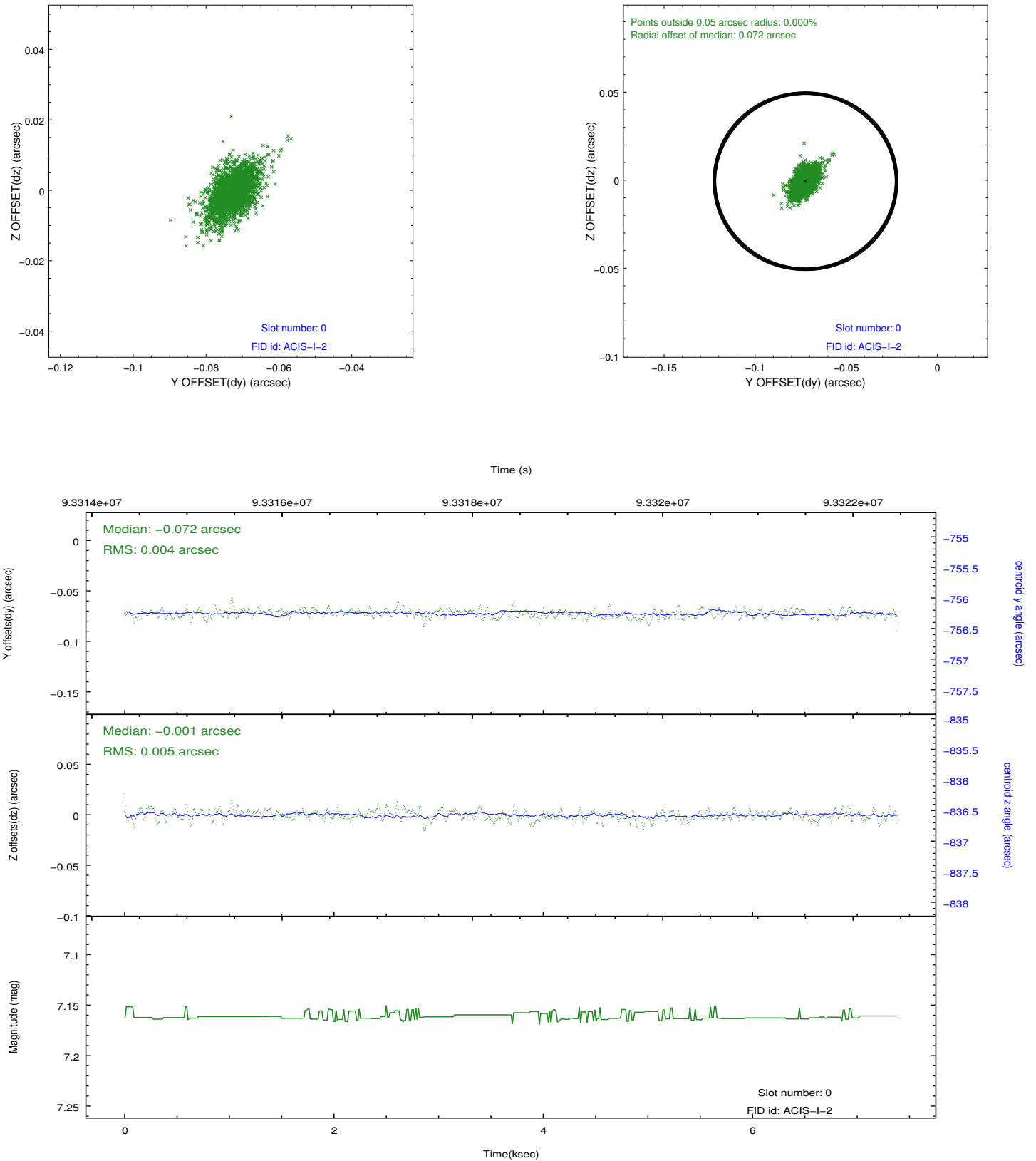


## 2.4.5 Slot 7

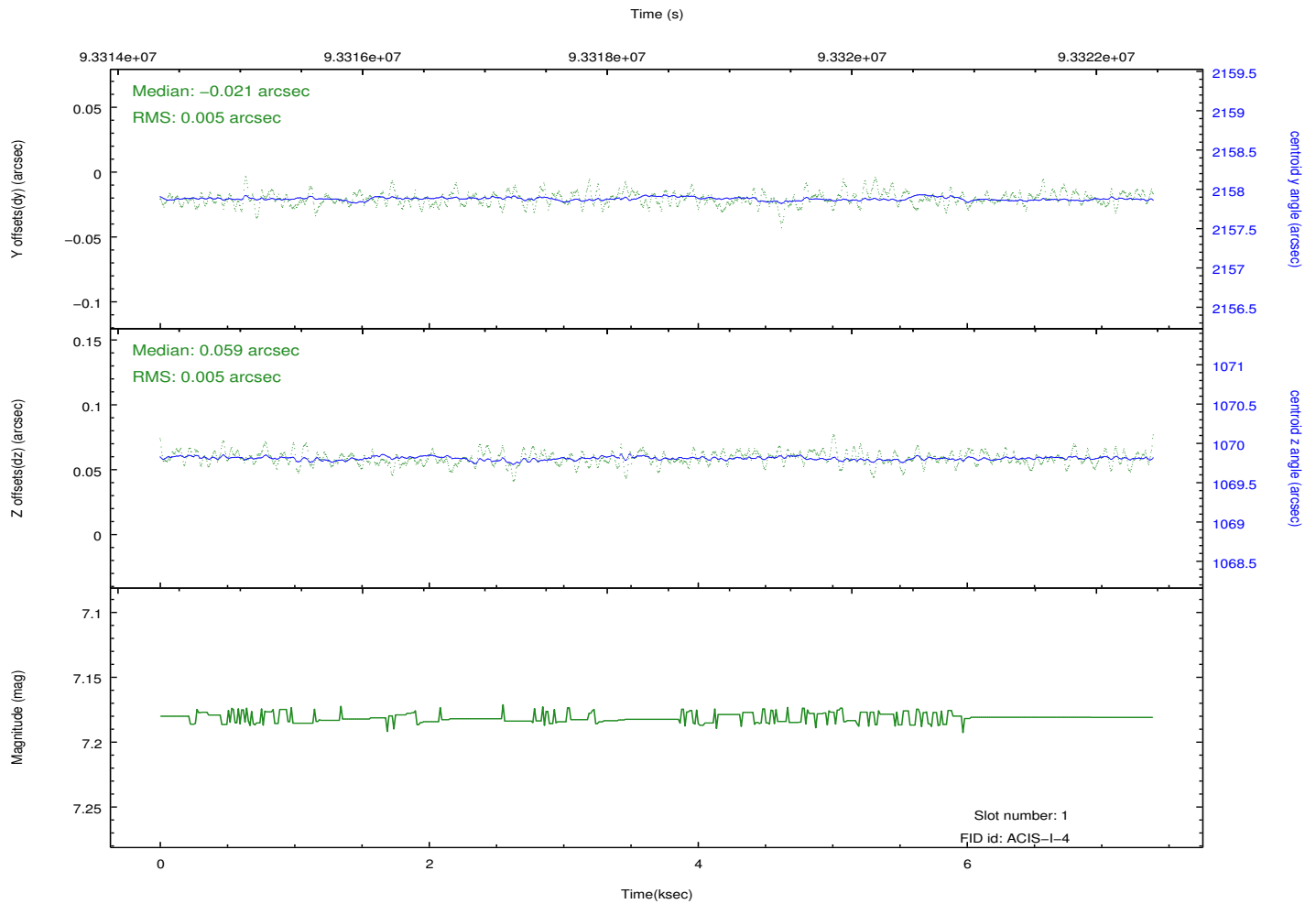
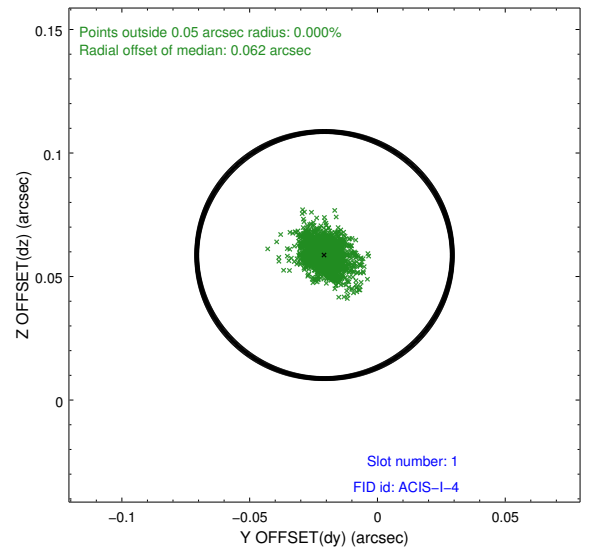
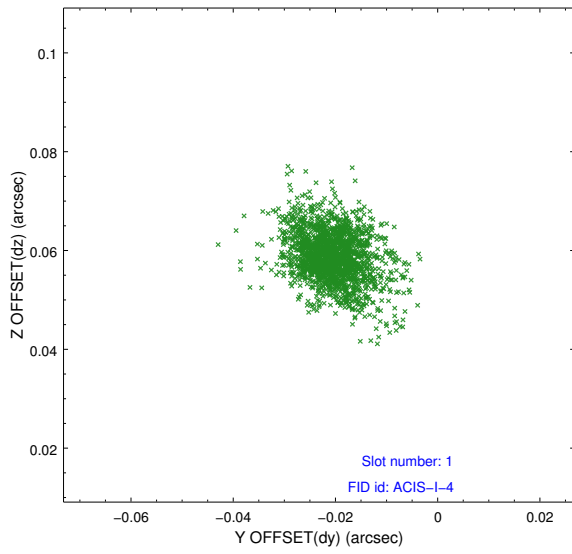


## 2.5 FID Slots

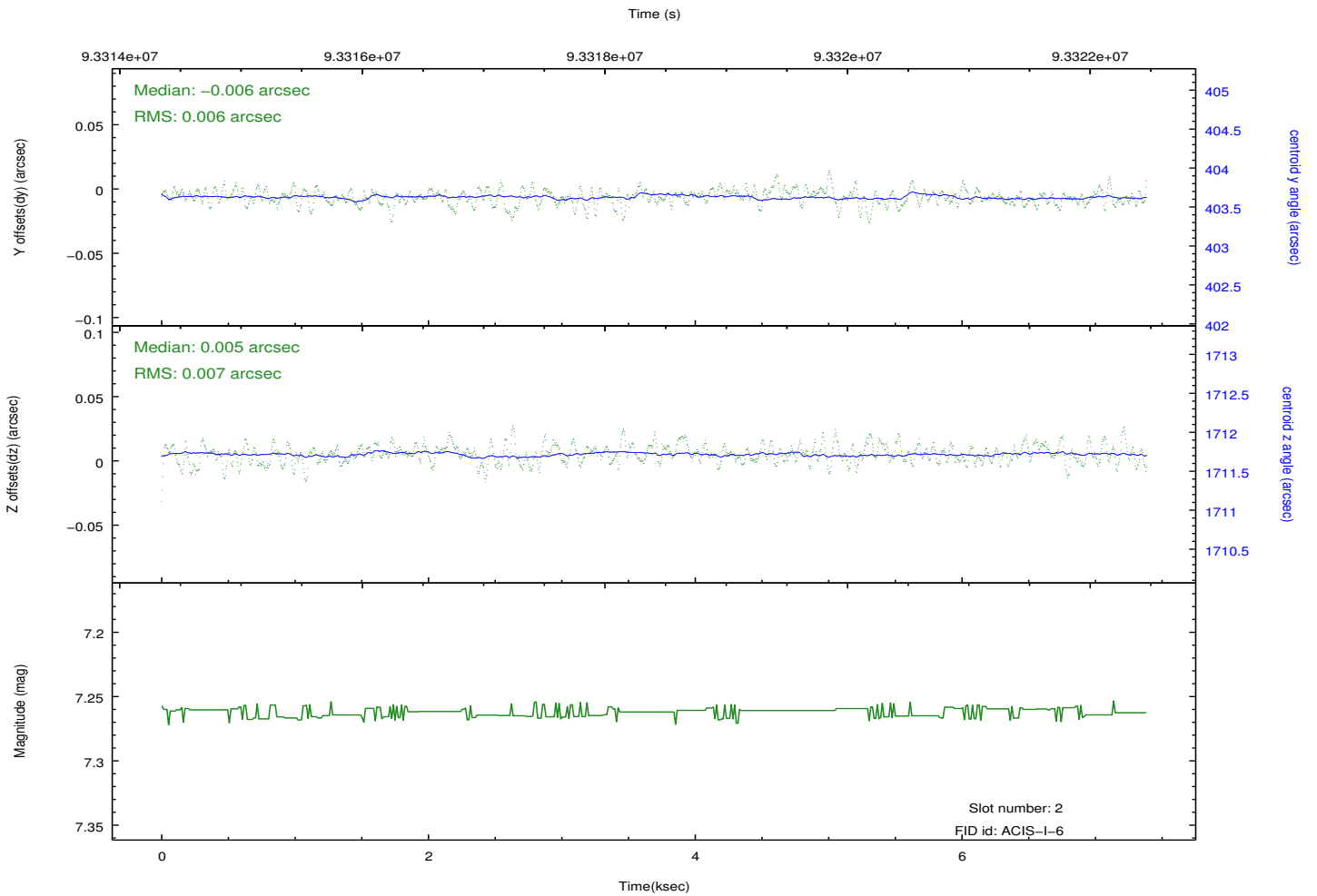
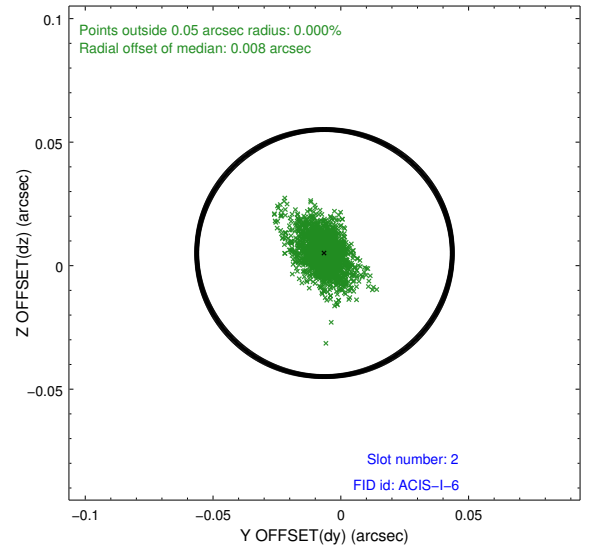
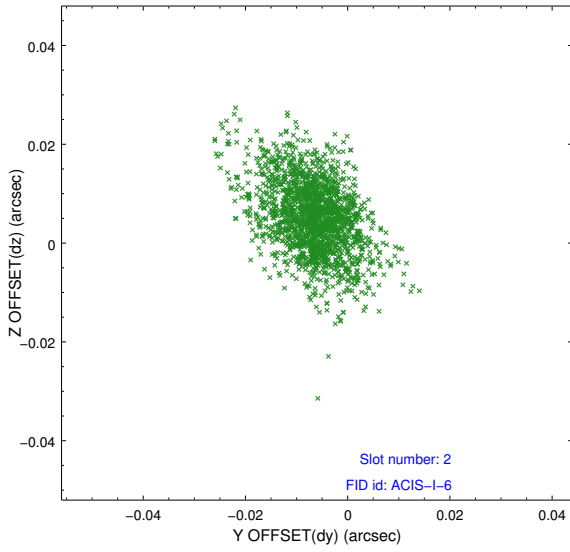
### 2.5.1 Slot 0



## 2.5.2 Slot 1



### 2.5.3 Slot 2



# A Summary

## A.1 Status

V&V Scientist	Beth Sundheim
V&V Date (YYYY-MM-DD)	2012.09.13
V&V Edition	1
V&V Disposition and Status	OK
V&V Charge Time	7

## A.2 Comments

Charge time for this observation remains at previous value of 7 ksec.  
Window preference met.