

V&V Reference Report

L2 ASCDS Version : 8.5.1.1

Observation 15488 - L2 Version 2
Chandra X-Ray Center

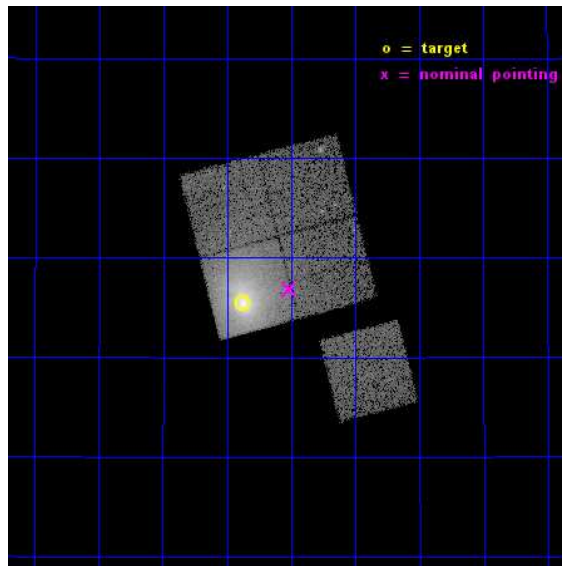
L2 Processing Date : Dec 2 2014

Contents

1	Front	2
2	OBI	3
2.1	OBI	3
2.1.1	Images	3
2.1.2	Bias	3
2.1.3	Parameters	4
2.1.4	Events	4
2.2	Compared Parameters	5
2.3	Aspect	6
2.4	Star Slots	9
2.4.1	Slot 3	9
2.4.2	Slot 4	10
2.4.3	Slot 5	11
2.4.4	Slot 6	12
2.4.5	Slot 7	13
2.5	FID Slots	14
2.5.1	Slot 0	14
2.5.2	Slot 1	15
2.5.3	Slot 2	16
A	Summary	17
A.1	Status	17
A.2	Comments	17

1 Front

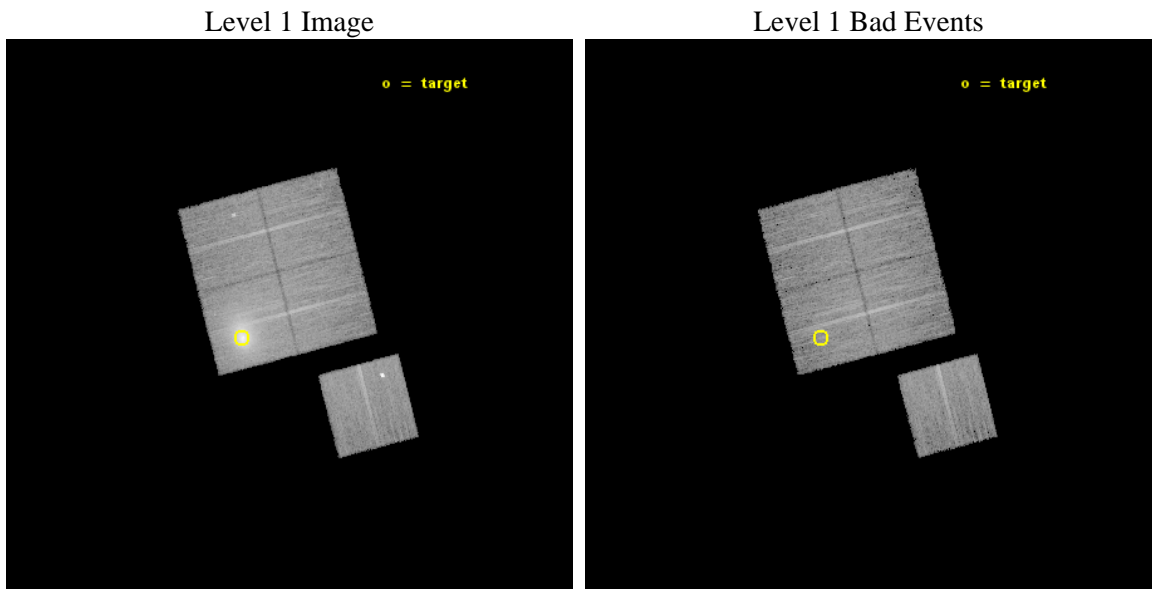
seq_num	890074	Sequence number
obs_id	15488	Observation id
title	AO-14 Calibration Observations of A1795	Proposal title
observer	Dr. CXC Calibration	Principal investigator
object	A1795	Source name
dtcycle	0	
cycle	P	events from which exps? Prim/Second/Both
ra_targ	207.219583	Observer's specified target RA [deg]
dec_targ	26.590833	Observer's specified target Dec [deg]
ra_nom	207.12843973001	Nominal RA [deg]
dec_nom	26.613966094613	Nominal Dec [deg]
roll_nom	165.57093481167	Nominal Roll [deg]
revision	2	Processing version of data
ontime	14770.264299452	Sum of GTIs [s]
livetime	14577.27992267	Livetime [s]
ontime0	14773.282259941	Sum of GTIs [s]
ontime1	14773.323299944	Sum of GTIs [s]
ontime2	14770.223269463	Sum of GTIs [s]
ontime3	14770.264299452	Sum of GTIs [s]
ontime6	14773.241219938	Sum of GTIs [s]
l2events	133299	Number of level 2 events



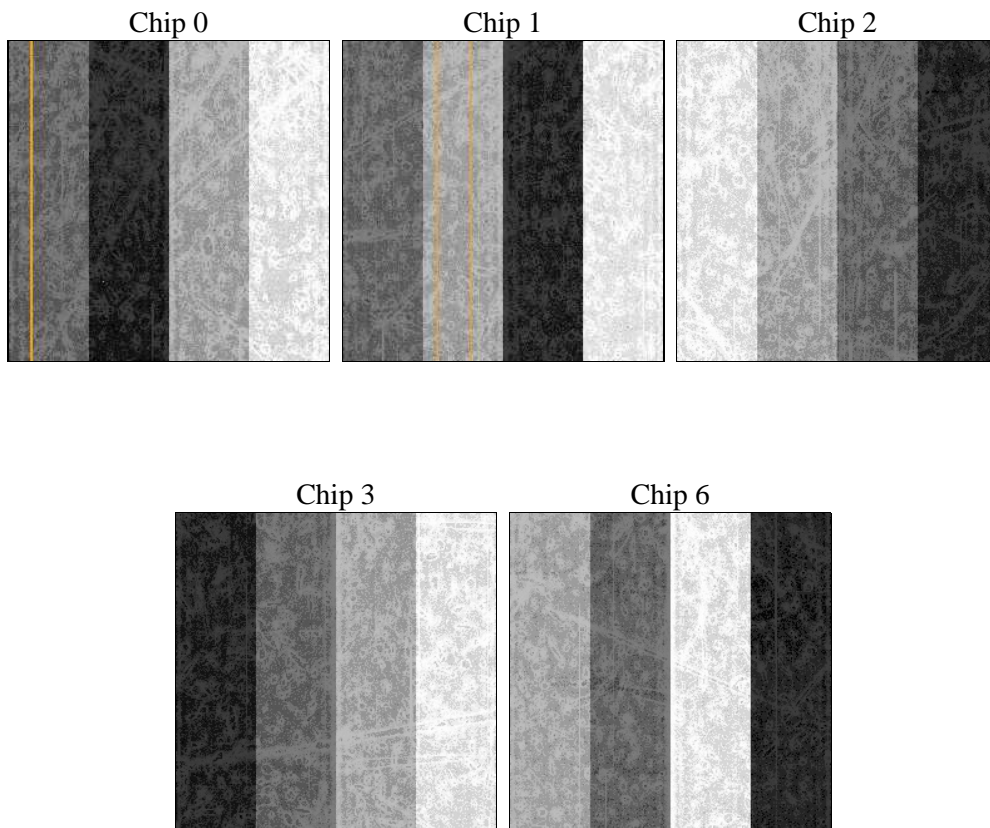
2 OBI

2.1 OBI

2.1.1 Images



2.1.2 Bias



2.1.3 Parameters

obi_num	0	Obi number	sched_exp_time	15000.000000	[s] Scheduled observation exposure time
ascdsver	10.3	Processing system revision	ontime	14770.264299452	Sum of GTIs [s]
caldbver	4.6.4	 	ontime0	14773.282259941	Sum of GTIs [s]
date	2014-12-02T15:19:13	Date and time of file creation	ontime1	14773.323299944	Sum of GTIs [s]
revision	2	Processing version of data	ontime2	14770.223269463	Sum of GTIs [s]
			ontime3	14770.264299452	Sum of GTIs [s]
			ontime6	14773.241219938	Sum of GTIs [s]
			l1events	505288	Number of level 1 events

2.1.4 Events

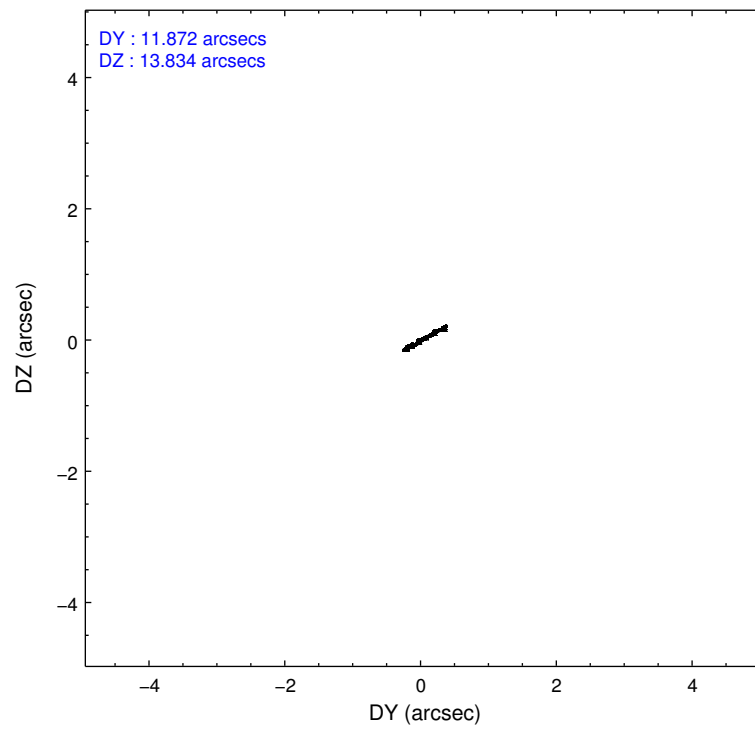
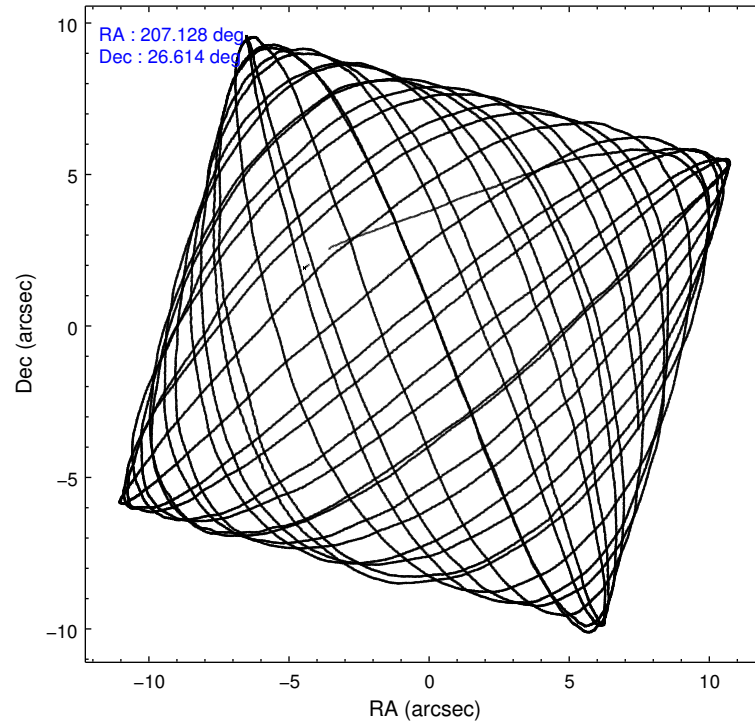
	ccd 0	ccd 1	ccd 2	ccd 3	ccd 6
level 1 events	79381	79409	86227	172720	87551
rejected events	69321	65708	74802	74354	72996
rejected %	87%	82%	86%	43%	83%

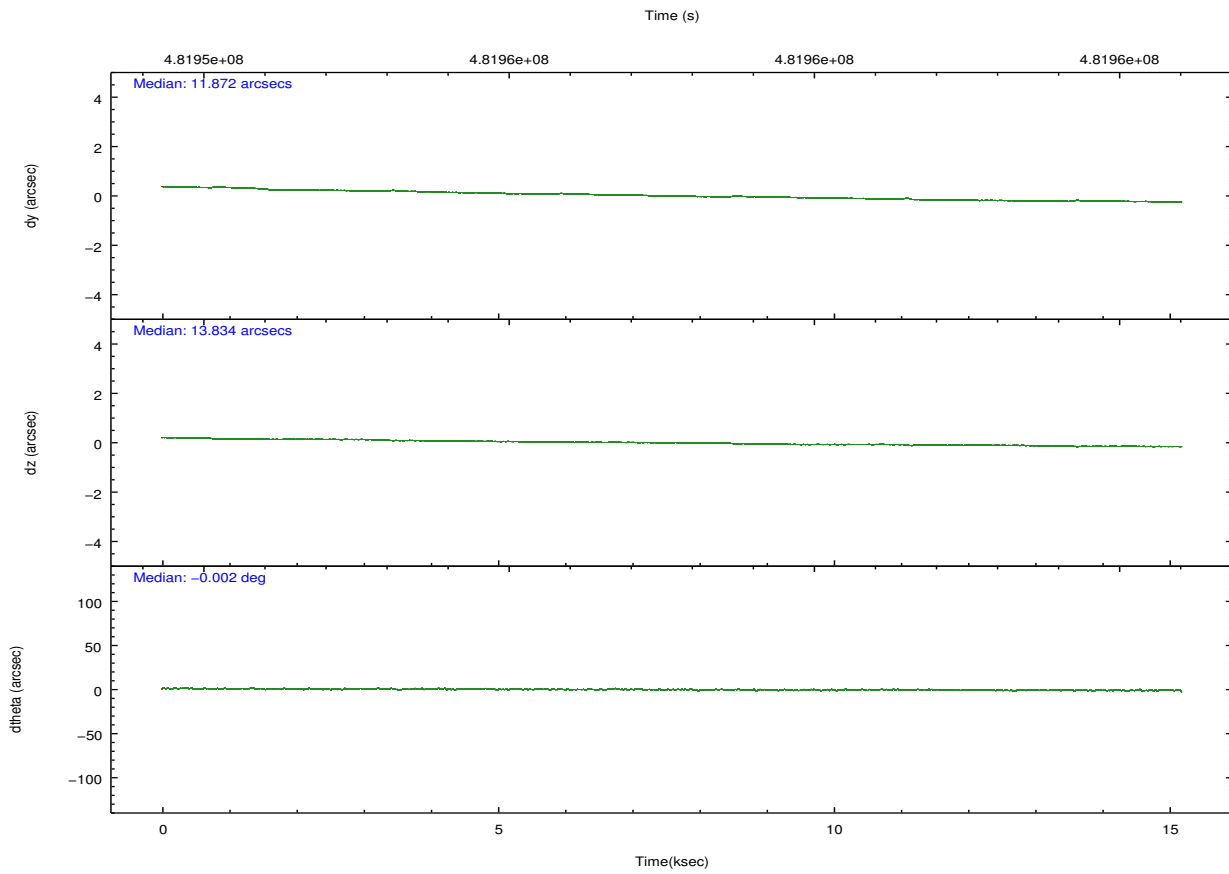
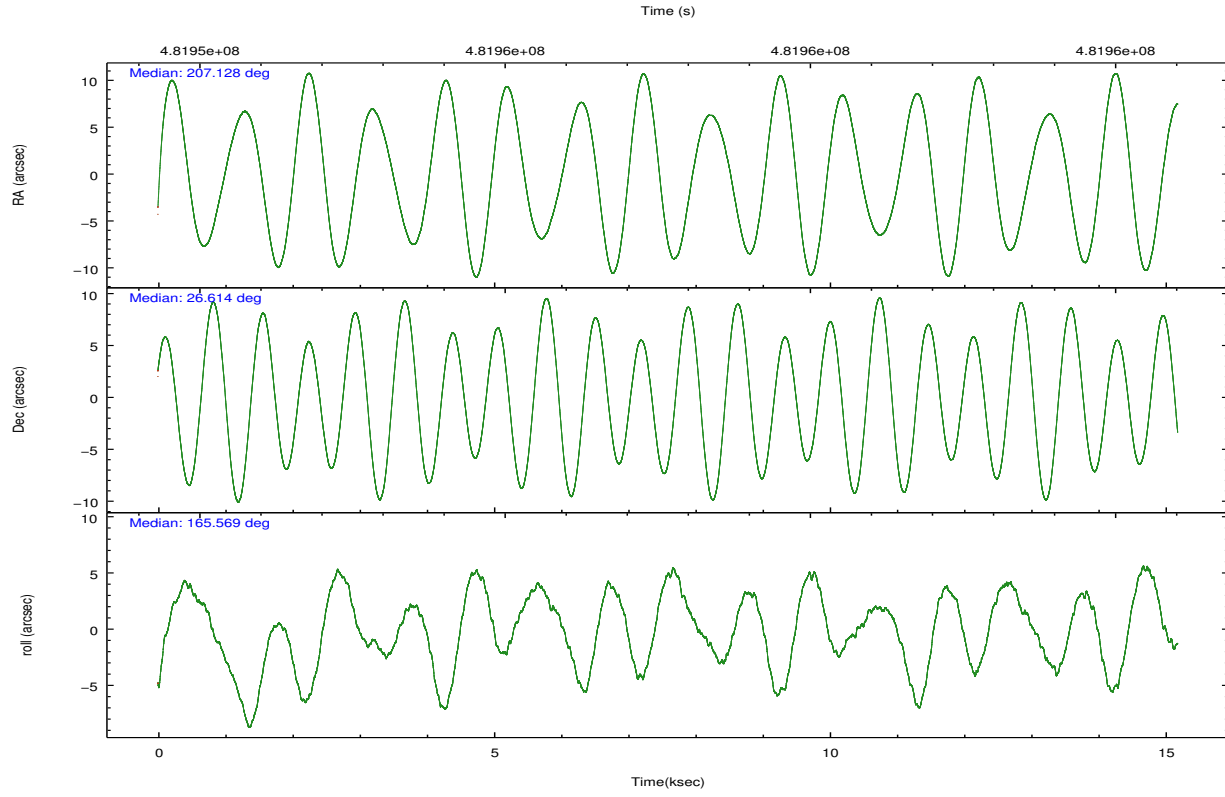
	ccd 0	ccd 1	ccd 2	ccd 3	ccd 6
grade 0 events	3837	6482	5259	75227	3504
	4%	8%	6%	43%	4%
grade 1 events	37	43	62	335	50
	0%	0%	0%	0%	0%
grade 2 events	2357	2596	2368	11274	6728
	2%	3%	2%	6%	7%
grade 3 events	995	1101	1020	3816	991
	1%	1%	1%	2%	1%
grade 4 events	936	1098	1003	3779	1007
	1%	1%	1%	2%	1%
grade 5 events	3772	3926	3551	4461	3873
	4%	4%	4%	2%	4%
grade 6 events	1939	2431	1780	4314	2331
	2%	3%	2%	2%	2%
grade 7 events	65508	61732	71184	69514	69067
	82%	77%	82%	40%	78%

2.2 Compared Parameters

Parameter	Planned	Actual	Parameter	Planned	Actual
Instrument	ACIS	ACIS	Obspar format version number	7	7
Detector	ACIS-01236	ACIS-01236	Obspar file type	PREDICTED	ACTUAL
Grating	NONE	NONE	Obspar update status	NONE	UPDATED
Data mode	VFAINT	VFAINT	Number of optional ACIS chips dropped	0	0
Observation mode	POINTING	POINTING	On-chip summing requested	N	N
[deg] Pointing RA	207.158013	207.1284397300059	Subarray requested	NONE	NONE
[deg] Pointing Dec	26.621427	26.61396609461252	Alternating exposures requested	N	N
[deg] Pointing Roll	165.349002	165.570934811674	[s] Primary exposure time	0.000000	3.1
[mm] SIM focus pos	-0.782348	-0.7809083437167272			
[mm] SIM defocus	0	0.001439871863259334			
[mm] SIM translation stage pos	-219.472463	-219.4695540425693			
[mm] SIM translation stage offset	-14.12	-14.1228989603604			
[s] Observation start time (MET)	481950251.184000	481949038.27894			
Observation start date	2013-04-10T03:03:04	2013-04-10T02:43:58			
[s] Observation end time (MET)	481965251.184000	481966227.52987			
Observation end date	2013-04-10T07:13:04	2013-04-10T07:30:27			
Read mode	TIMED	TIMED			

2.3 Aspect





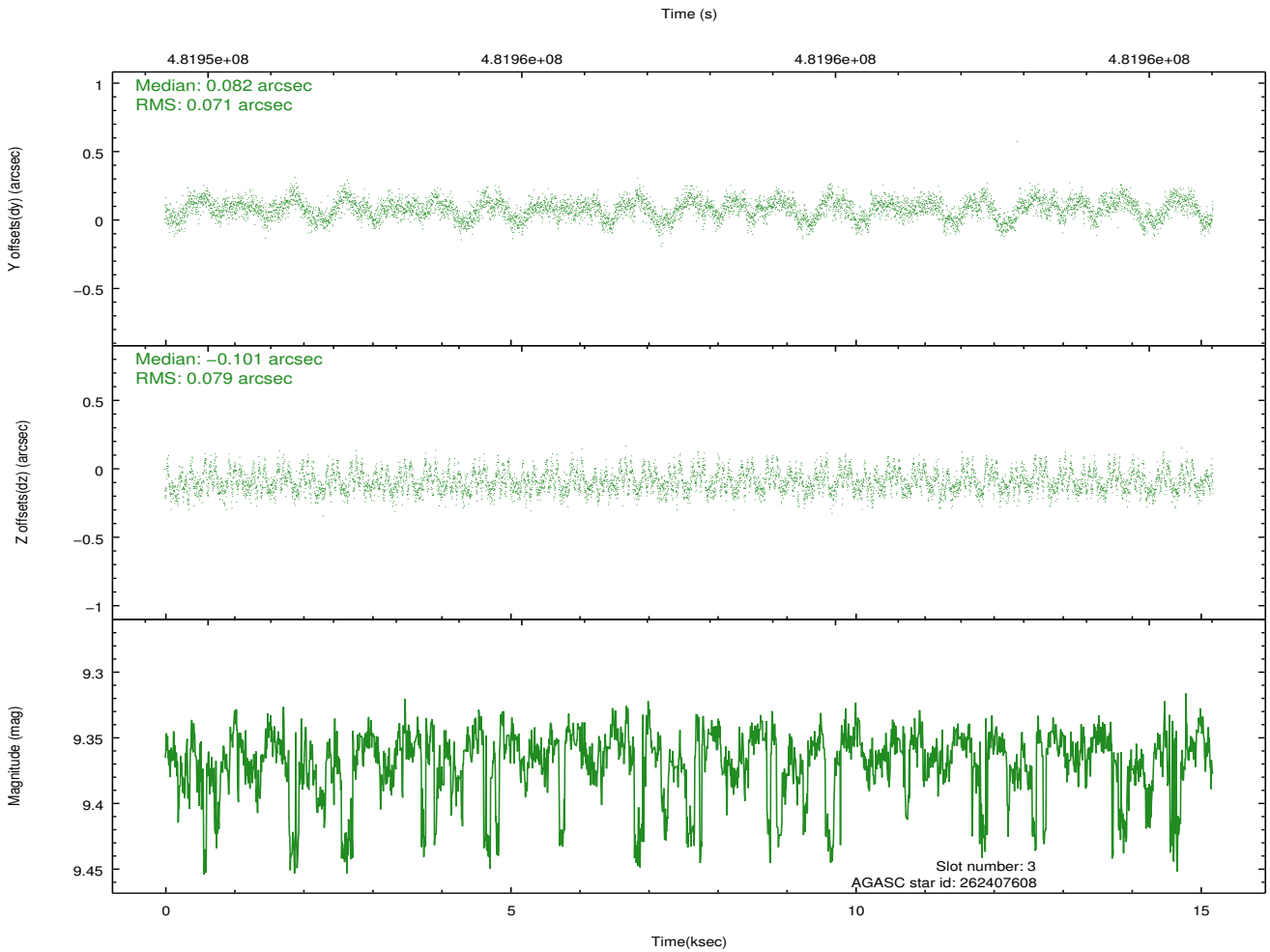
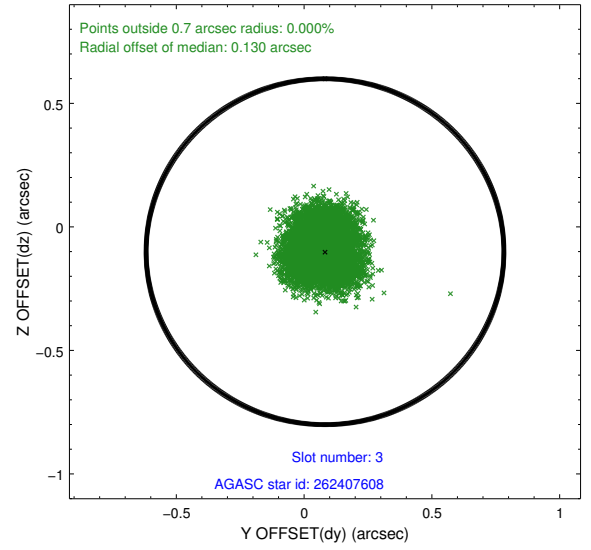
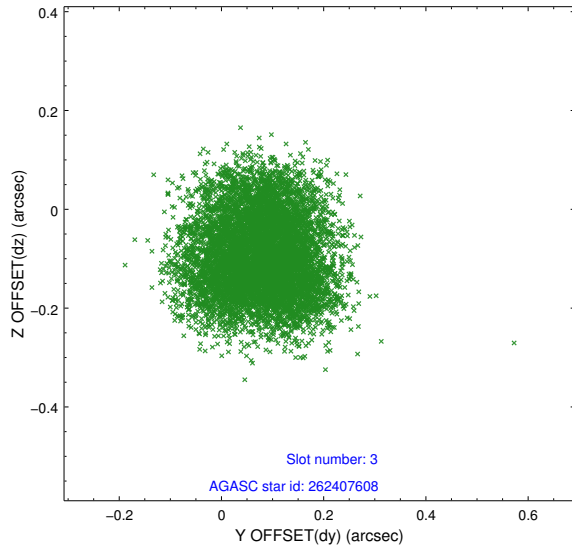
Slot Statistics

slot	status	used	id	mag	n_pts	med_dy	med_dz	dr1	dr2	ra	dec	mean_y	mean_z
0	FID		ACIS-I-1	7.18	3704	0.255	-0.250	0.010	0.017	0.000000	0.000000	927.65	-1127.66
1	FID		ACIS-I-5	7.18	3704	-0.367	0.188	0.007	0.012	0.000000	0.000000	-1820.92	770.03
2	FID		ACIS-I-6	7.20	3704	0.020	0.132	0.008	0.012	0.000000	0.000000	392.63	1414.83
3	GUIDE	used	262407608	9.36	7381	0.082	-0.101	0.116	0.178	207.378401	26.435507	-856.16	467.44
4	GUIDE	used	262408096	9.34	7384	-0.042	-0.083	0.144	0.242	207.011678	26.515421	360.36	488.38
5	GUIDE	used	262408512	7.99	7403	-0.045	0.082	0.073	0.114	207.800210	27.128796	-1526.89	-2292.28
6	GUIDE	used	262408936	9.67	7402	-0.073	0.082	0.128	0.202	207.154731	26.726554	105.83	-363.33
7	GUIDE	used	262409552	8.18	7404	0.091	0.014	0.106	0.177	206.584269	27.192805	2299.51	-1528.88

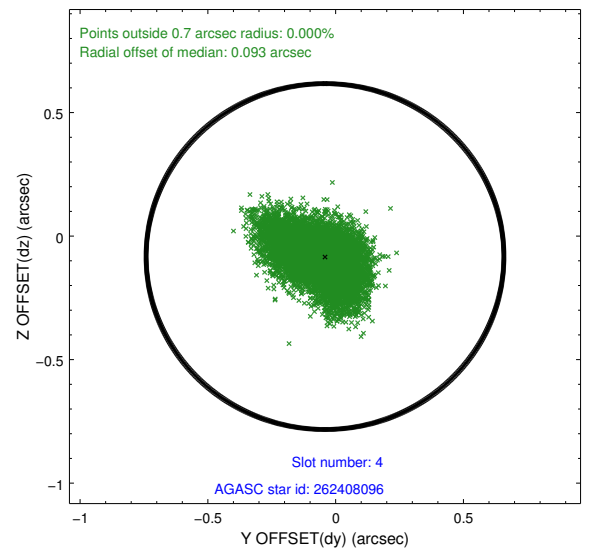
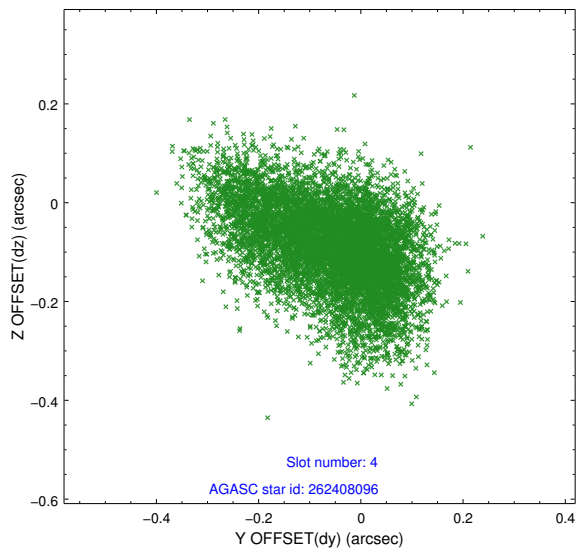
∞

2.4 Star Slots

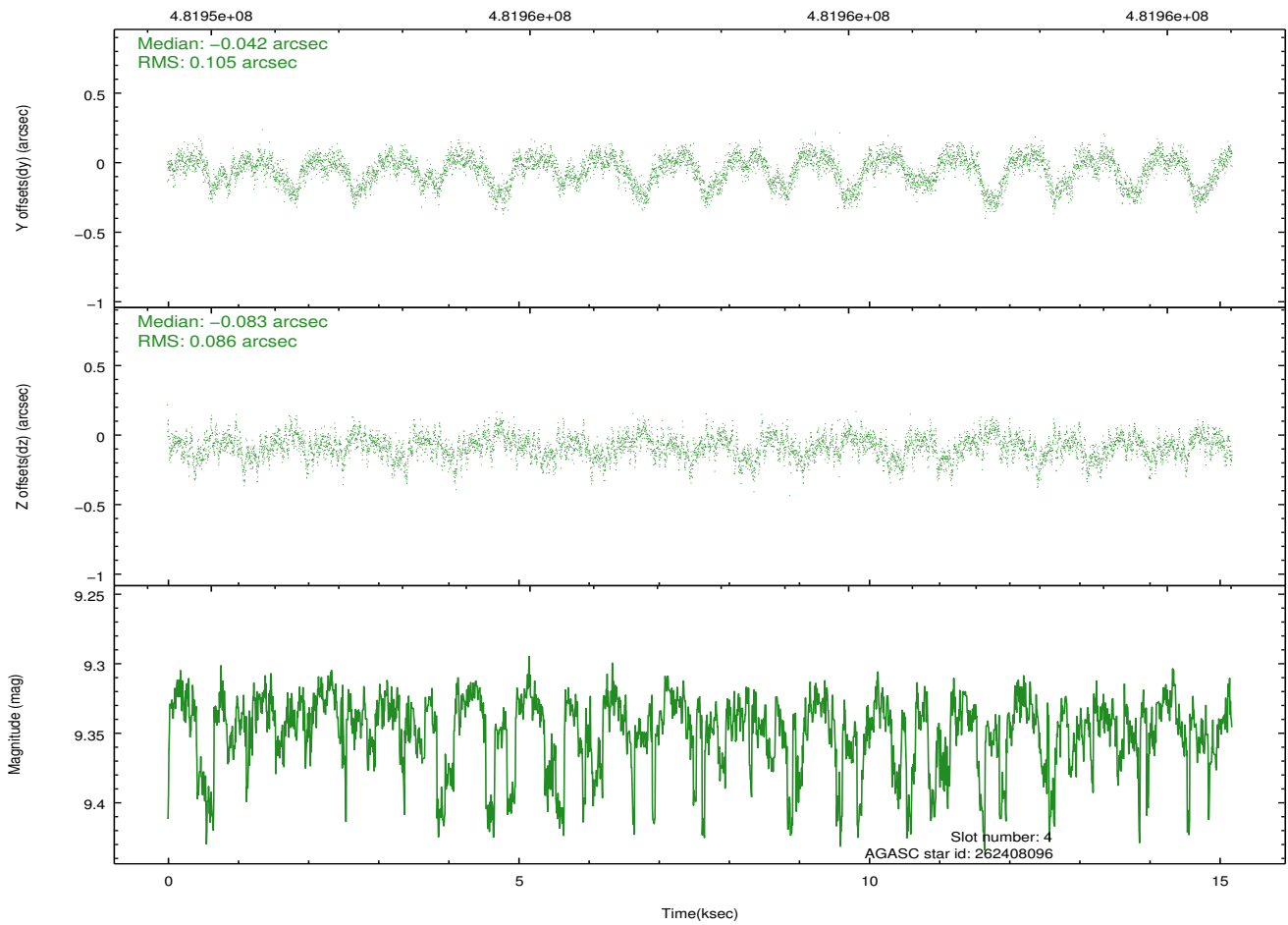
2.4.1 Slot 3



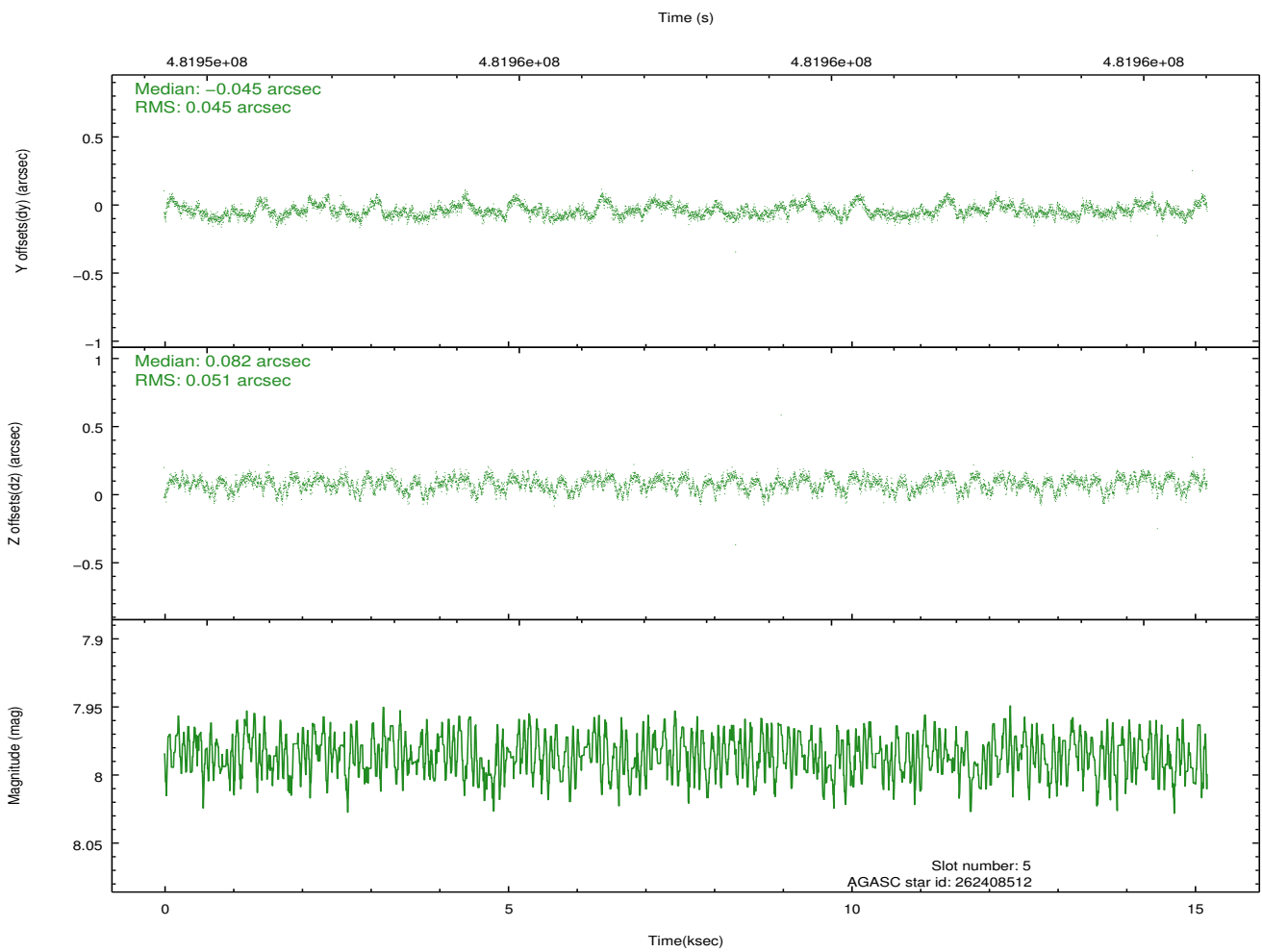
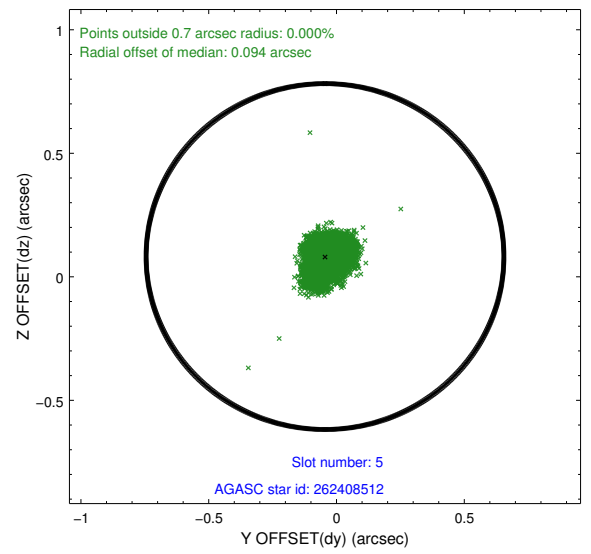
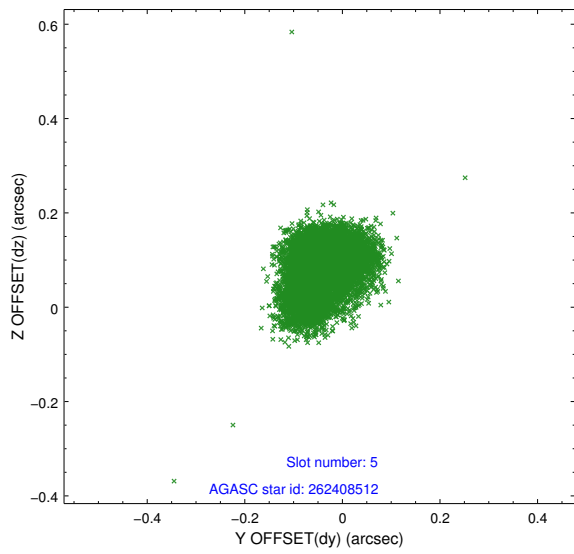
2.4.2 Slot 4



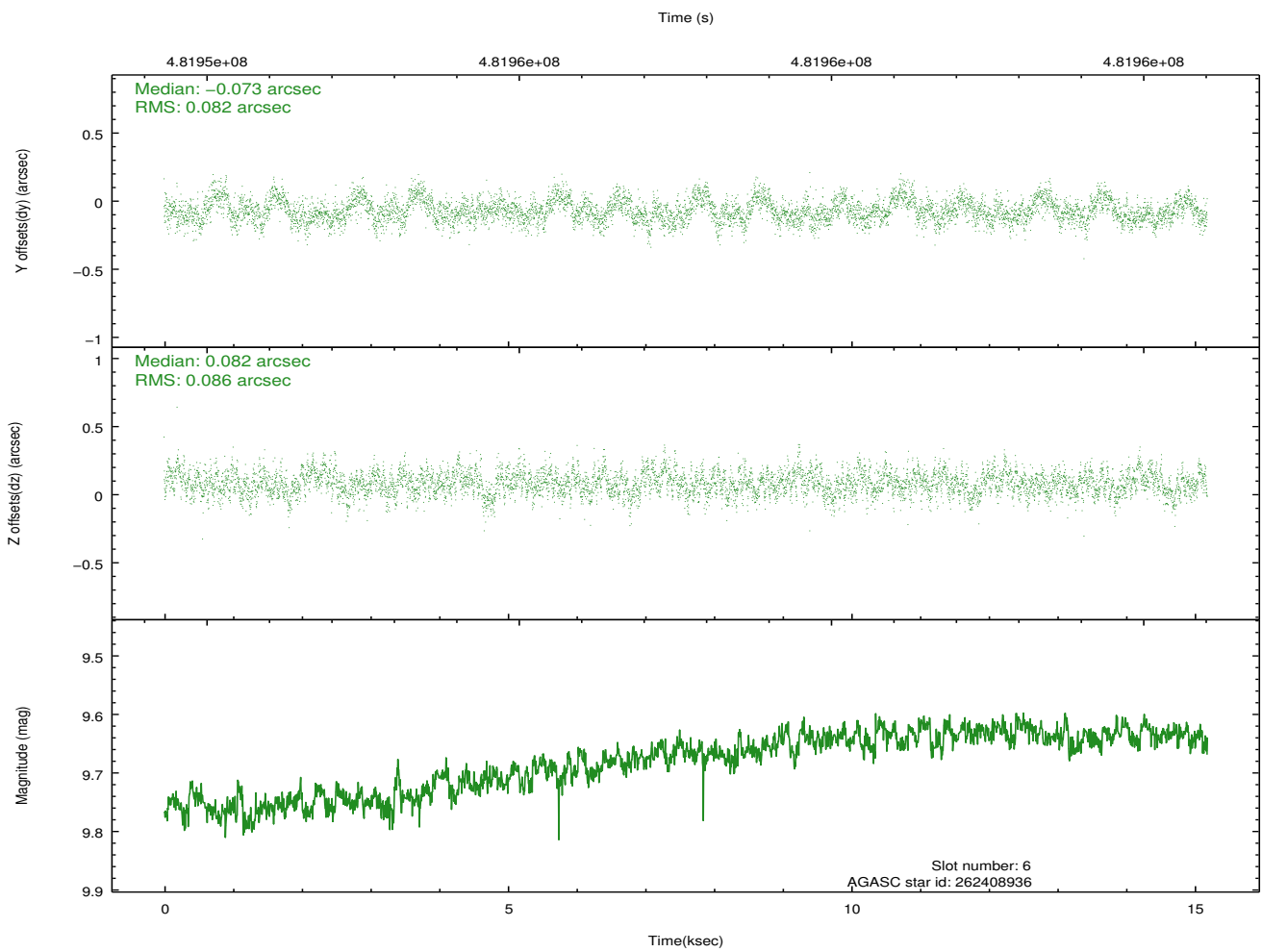
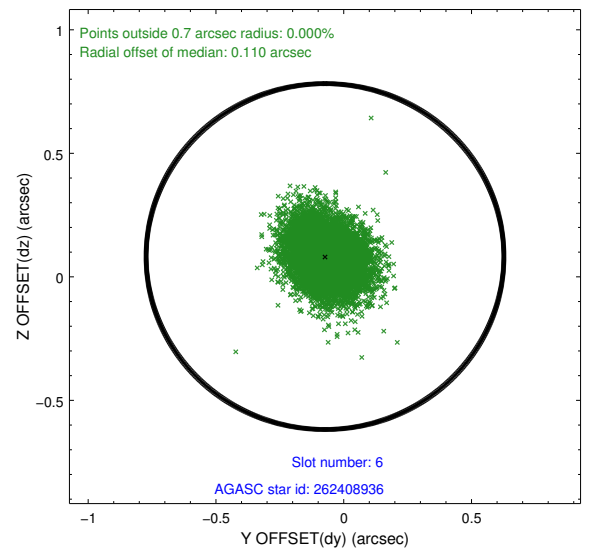
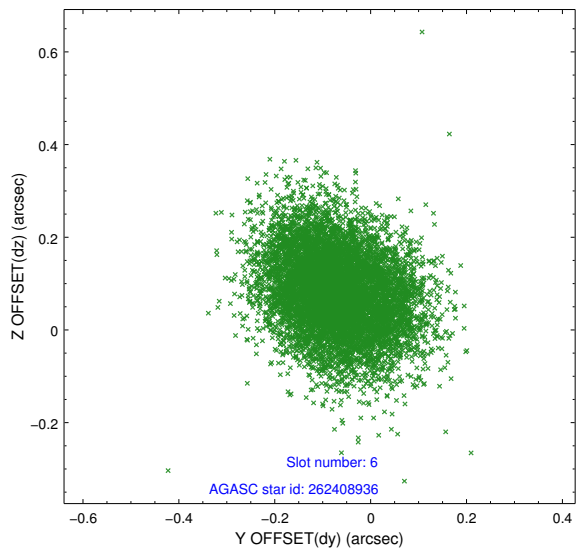
Time (s)



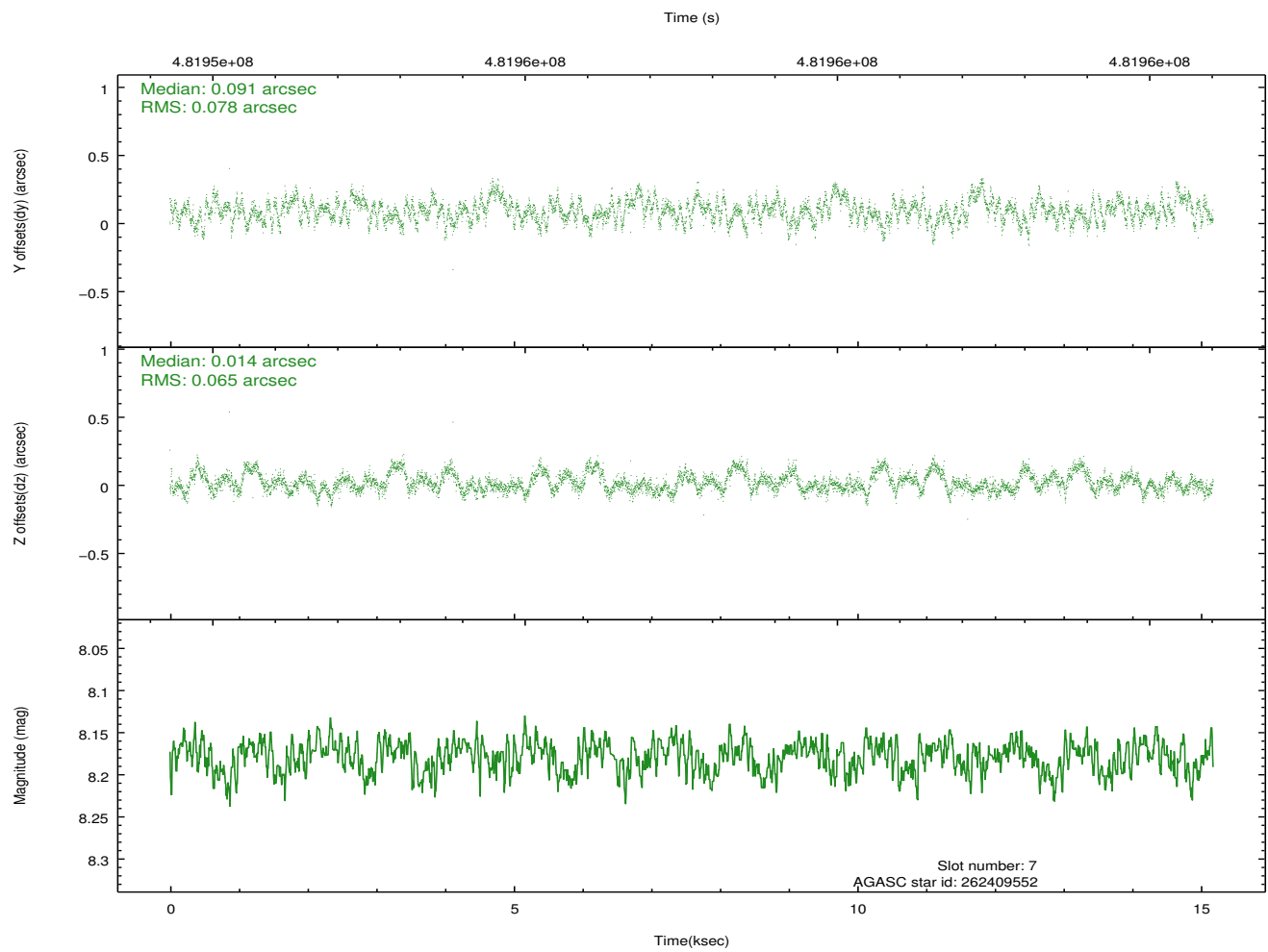
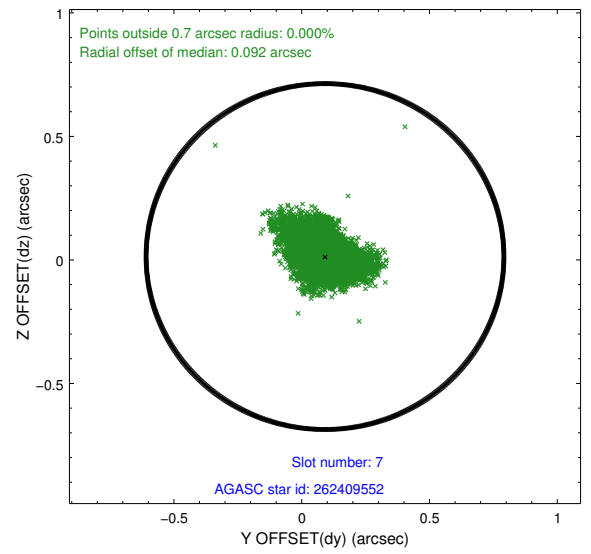
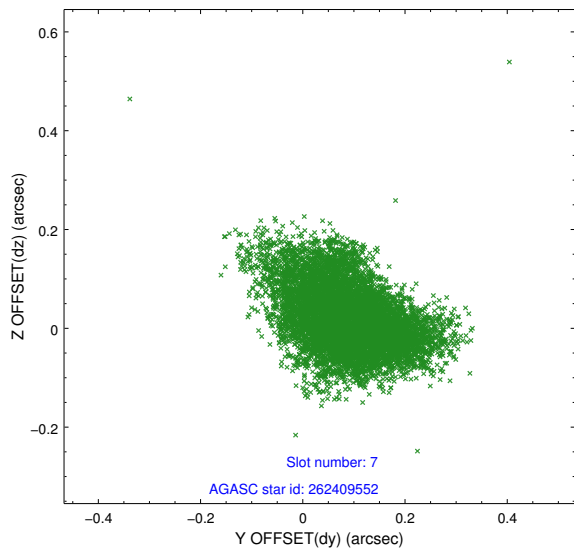
2.4.3 Slot 5



2.4.4 Slot 6

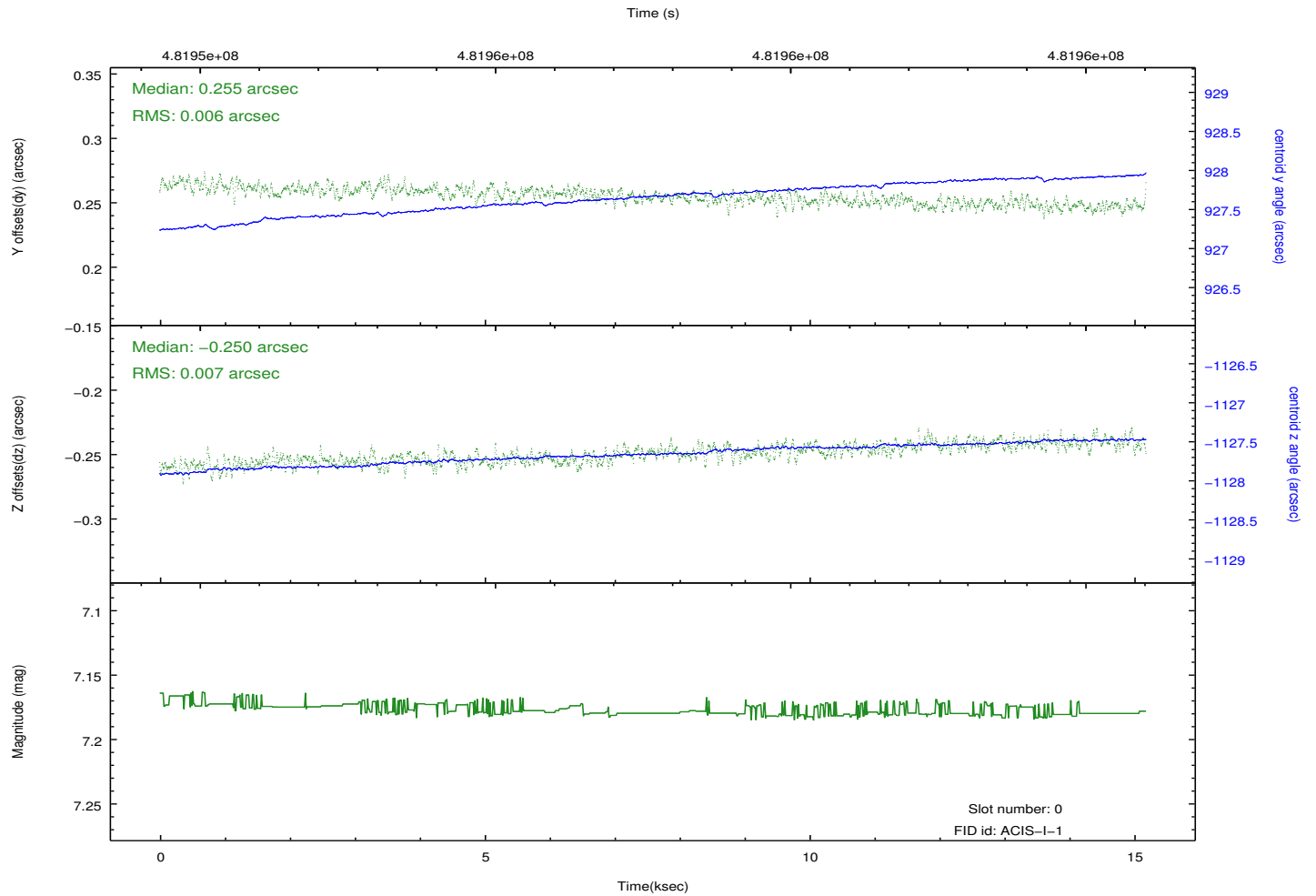
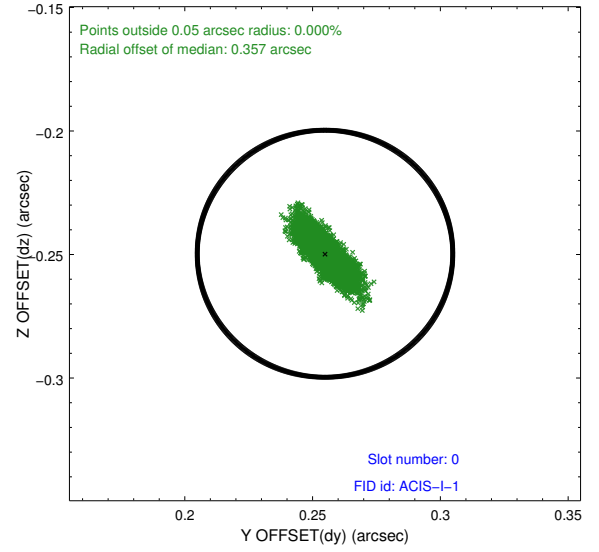
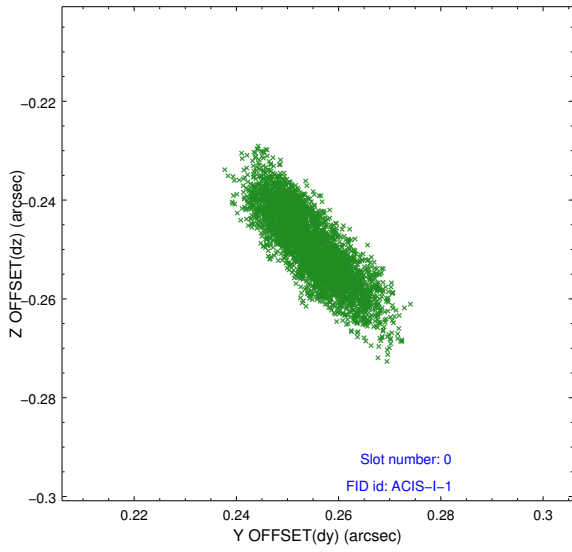


2.4.5 Slot 7

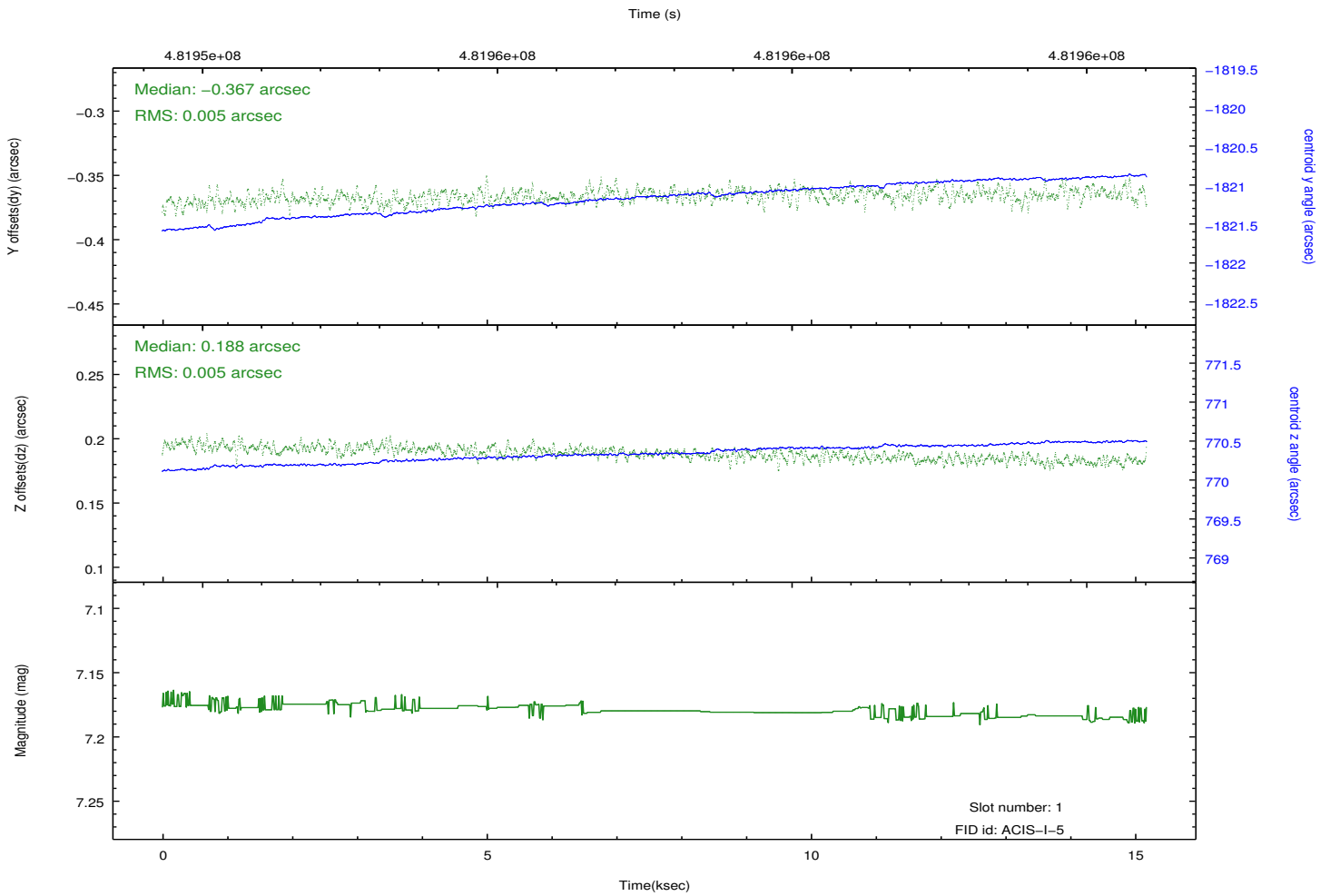
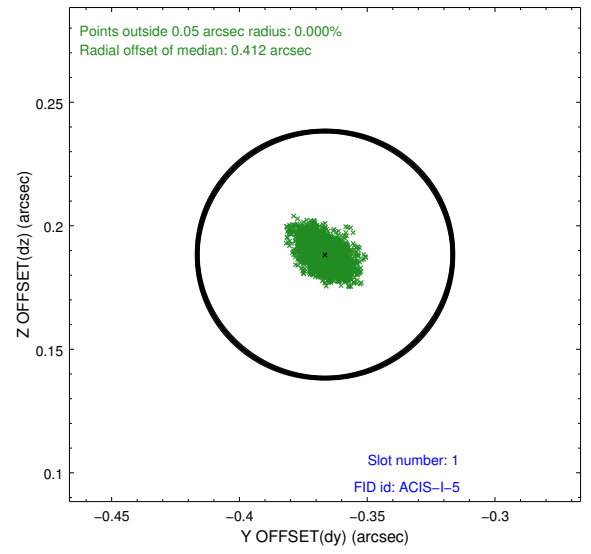
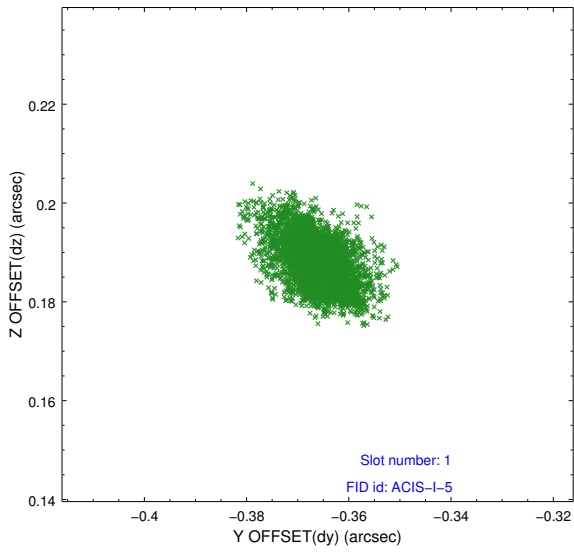


2.5 FID Slots

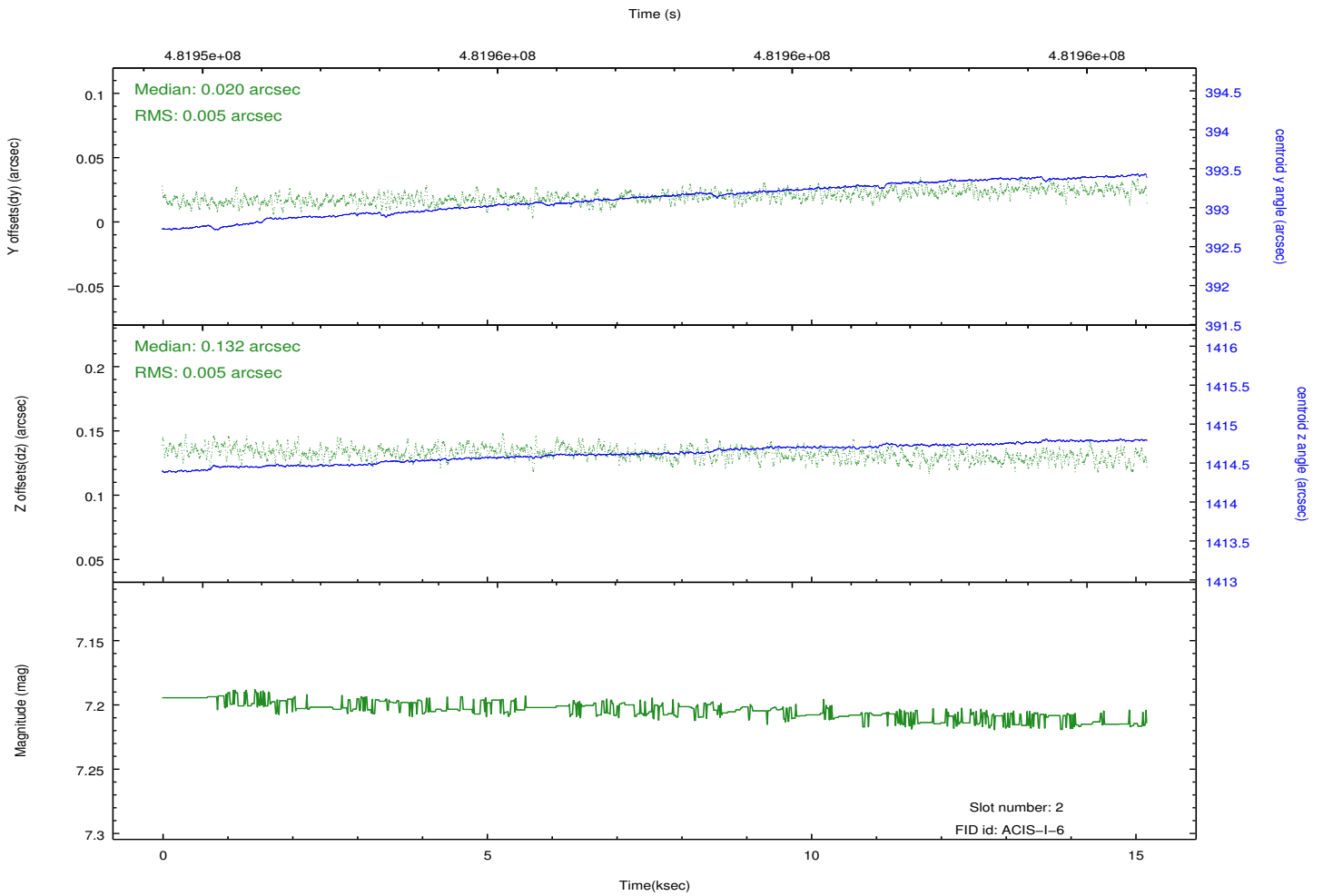
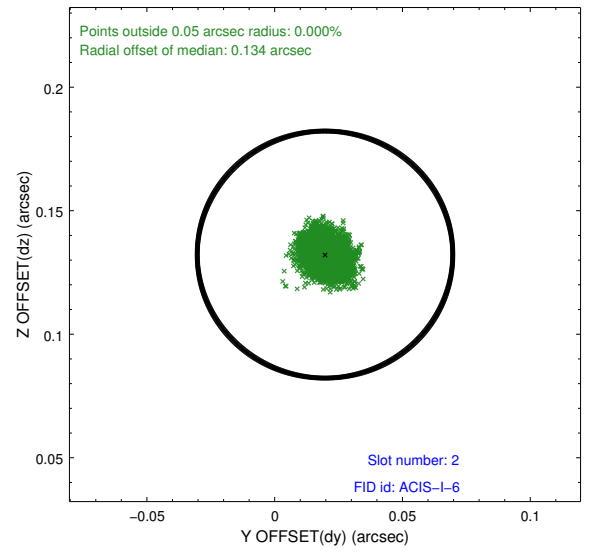
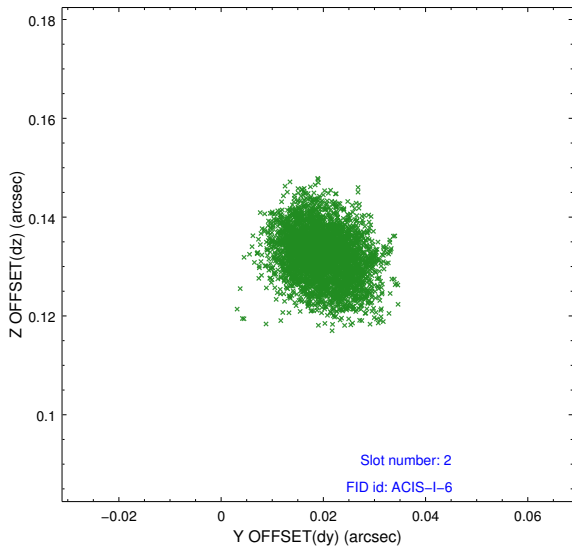
2.5.1 Slot 0



2.5.2 Slot 1



2.5.3 Slot 2



A Summary

A.1 Status

V&V Scientist	Beth Sundheim
V&V Date (YYYY-MM-DD)	2014.12.10
V&V Edition	1
V&V Disposition and Status	OK
V&V Charge Time	14.770264299452

A.2 Comments

These data have been reprocessed with new aspect alignment calibration files that correct small mean offsets (up to 0.4 arcsecs) and improve overall astrometric accuracy. The new calibration was determined using data from the time period being reprocessed and was performed using cross-correlation of X-ray sources with radio and optical counterparts.