

V&V Reference Report

L2 ASCDS Version : 10.3.3

Observation 15718 - L2 Version 1
Chandra X-Ray Center

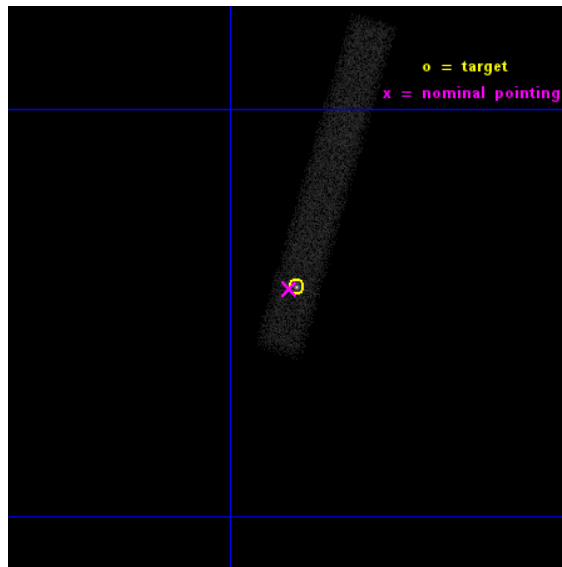
L2 Processing Date : Mar 4 2015

Contents

1	Front	2
2	OBI	3
2.1	OBI	3
2.1.1	Images	3
2.1.2	Bias	3
2.1.3	Parameters	4
2.1.4	Events	4
2.2	Compared Parameters	5
2.3	Aspect	6
2.4	Star Slots	9
2.4.1	Slot 3	9
2.4.2	Slot 4	10
2.4.3	Slot 5	11
2.4.4	Slot 6	12
2.4.5	Slot 7	13
2.5	FID Slots	14
2.5.1	Slot 0	14
2.5.2	Slot 1	15
2.5.3	Slot 2	16
A	Summary	17
A.1	Status	17
A.2	Comments	17

1 Front

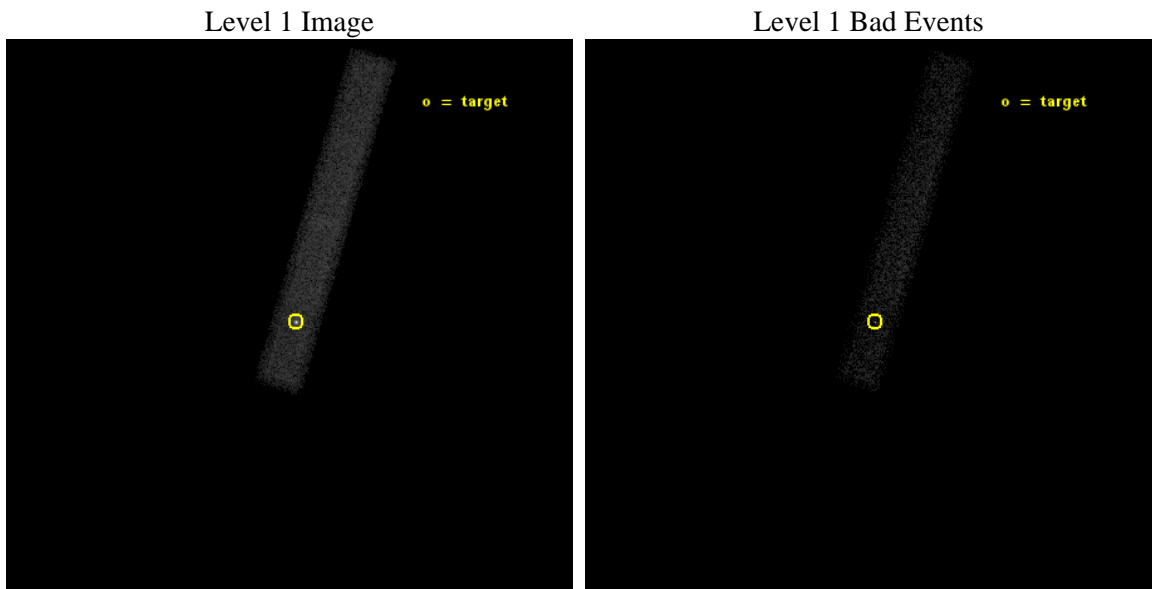
seq_num	200931	Sequence number
obs_id	15718	Observation id
title	Do exoplanets spin up their host stars?	Proposal title
observer	Dr Katja Poppenhaeger	Principal investigator
object	HD 41004	Source name
dtcycle	0	
cycle	P	events from which exps? Prim/Second/Both
ra_targ	89.956667	Observer's specified target RA [deg]
dec_targ	-48.239444	Observer's specified target Dec [deg]
ra_nom	89.961165242775	Nominal RA [deg]
dec_nom	-48.240325206487	Nominal Dec [deg]
roll_nom	287.06040243005	Nominal Roll [deg]
revision	1	Processing version of data
ontime	42069.597492337	Sum of GTIs [s]
livetime	38154.904310119	Livetime [s]
ontime7	42069.597492337	Sum of GTIs [s]
l2events	27577	Number of level 2 events



2 OBI

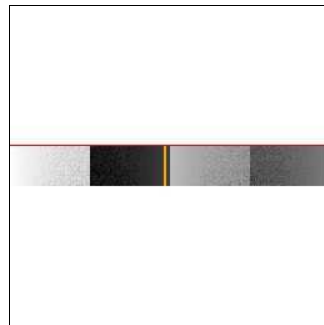
2.1 OBI

2.1.1 Images



2.1.2 Bias

Chip 7



2.1.3 Parameters

obi_num	1	Obi number	sched_exp_time	42000.000000	[s] Scheduled observation exposure time
ascdsver	10.3.3	Processing system revision	ontime	42069.597492337	Sum of GTIs [s]
caldbver	4.6.7	 	ontime7	42069.597492337	Sum of GTIs [s]
date	2015-03-04T14:59:13	Date and time of file creation	l1events	47266	Number of level 1 events
revision	1	Processing version of data			

2.1.4 Events

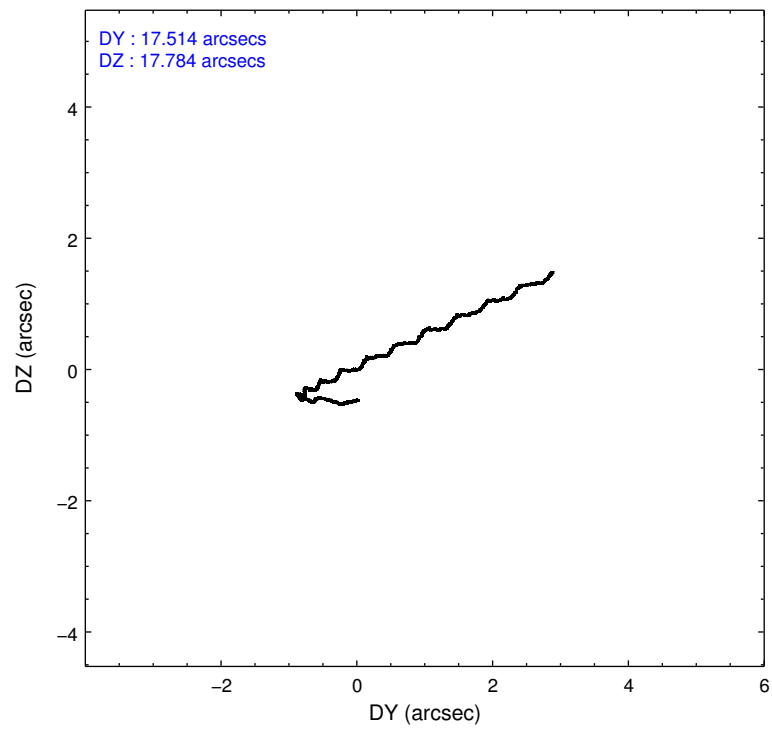
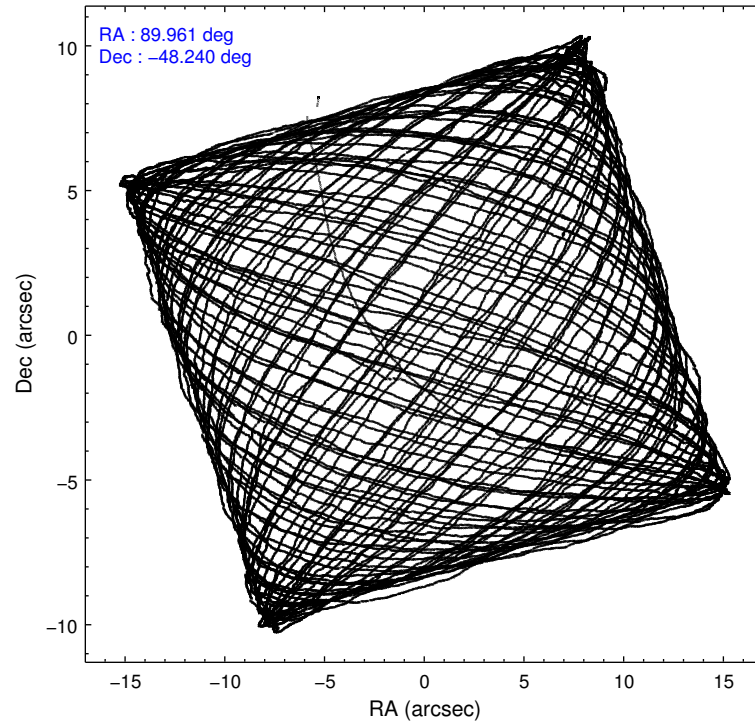
	ccd 7
level 1 events	47266
rejected events	18936
rejected %	40%

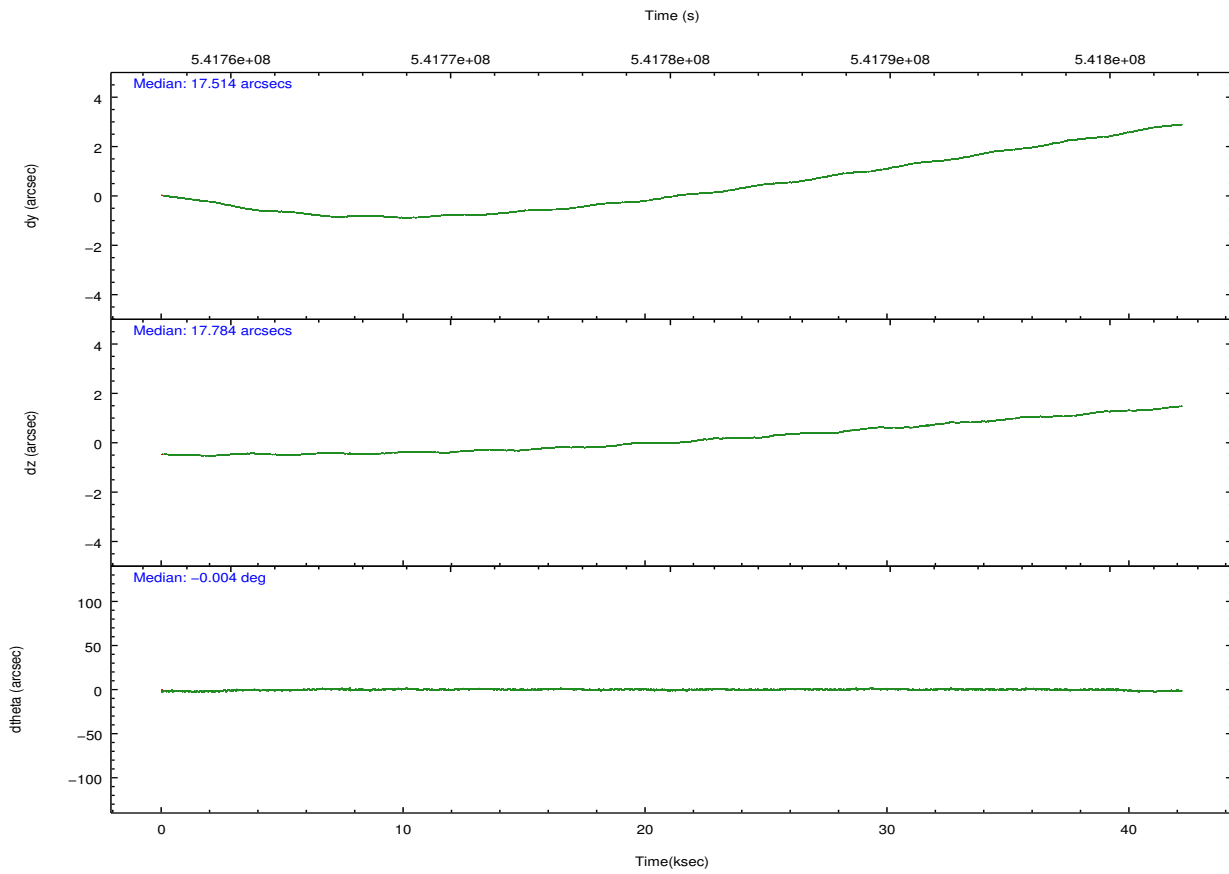
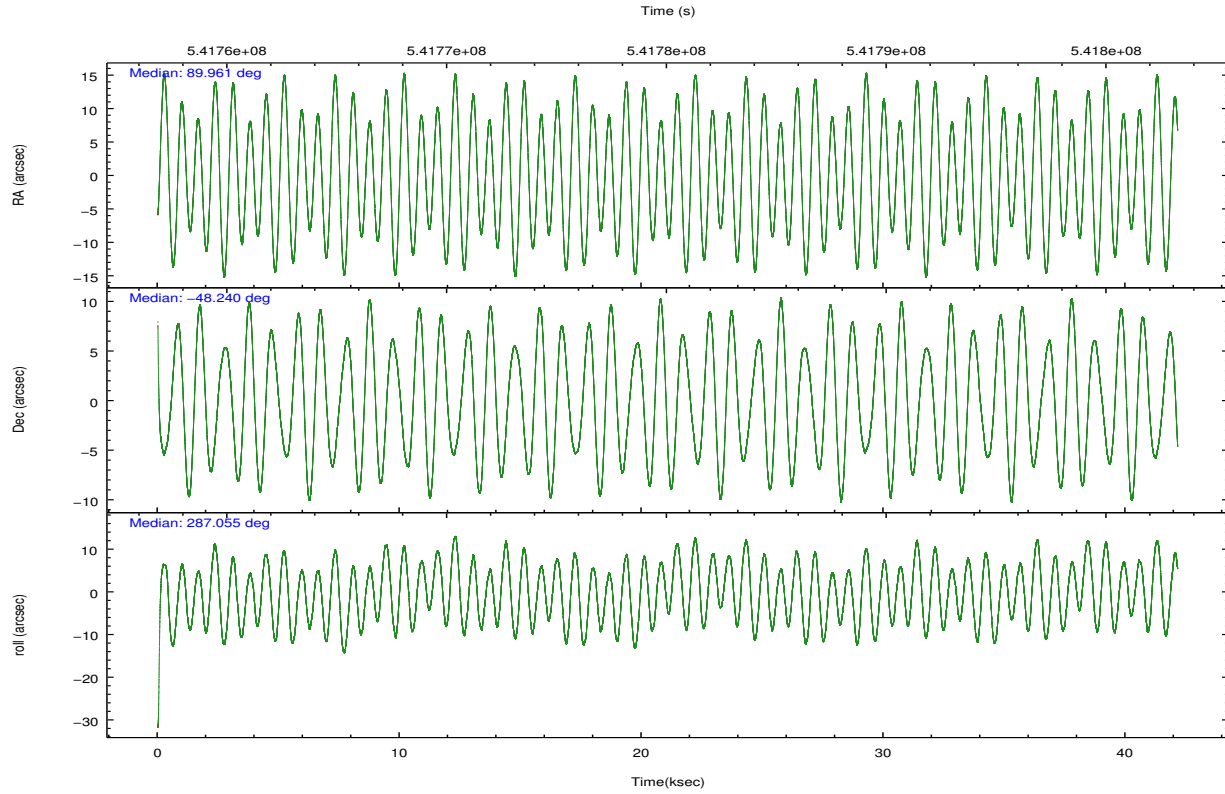
	ccd 7
grade 0 events	5330
	11%
grade 1 events	73
	0%
grade 2 events	6312
	13%
grade 3 events	3457
	7%
grade 4 events	3381
	7%
grade 5 events	3804
	8%
grade 6 events	9850
	20%
grade 7 events	15059
	31%

2.2 Compared Parameters

Parameter	Planned	Actual	Parameter	Planned	Actual
Instrument	ACIS	ACIS	Obspar format version number	7	7
Detector	ACIS-7	ACIS-7	Obspar file type	PREDICTED	ACTUAL
Grating	NONE	NONE	Obspar update status	NONE	UPDATED
Data mode	VFAINT	VFAINT	Number of optional ACIS chips dropped	0	0
Observation mode	POINTING	POINTING	On-chip summing requested	N	N
[deg] Pointing RA	89.930625	89.9611652427751	Subarray requested	CUSTOM	1/8
[deg] Pointing Dec	-48.221900	-48.24032520648712	Subarray start row	449	449
[deg] Pointing Roll	286.881008	287.0604024300515	Subarray row count	128	128
[mm] SIM focus pos	-0.684267	-0.6828225247311905	Alternating exposures requested	N	N
[mm] SIM defocus	0	0.001444936568705701	[s] Primary exposure time	0.000000	0.4
[mm] SIM translation stage pos	-190.132523	-190.1400660498719			
[mm] SIM translation stage offset	0	0.00754346686406393			
[s] Observation start time (MET)	541759157.184000	541758142.63555			
Observation start date	2015-03-03T08:38:10	2015-03-03T08:22:22			
[s] Observation end time (MET)	541801157.184000	541802586.12553			
Observation end date	2015-03-03T20:18:10	2015-03-03T20:43:06			
Read mode	TIMED	TIMED			

2.3 Aspect



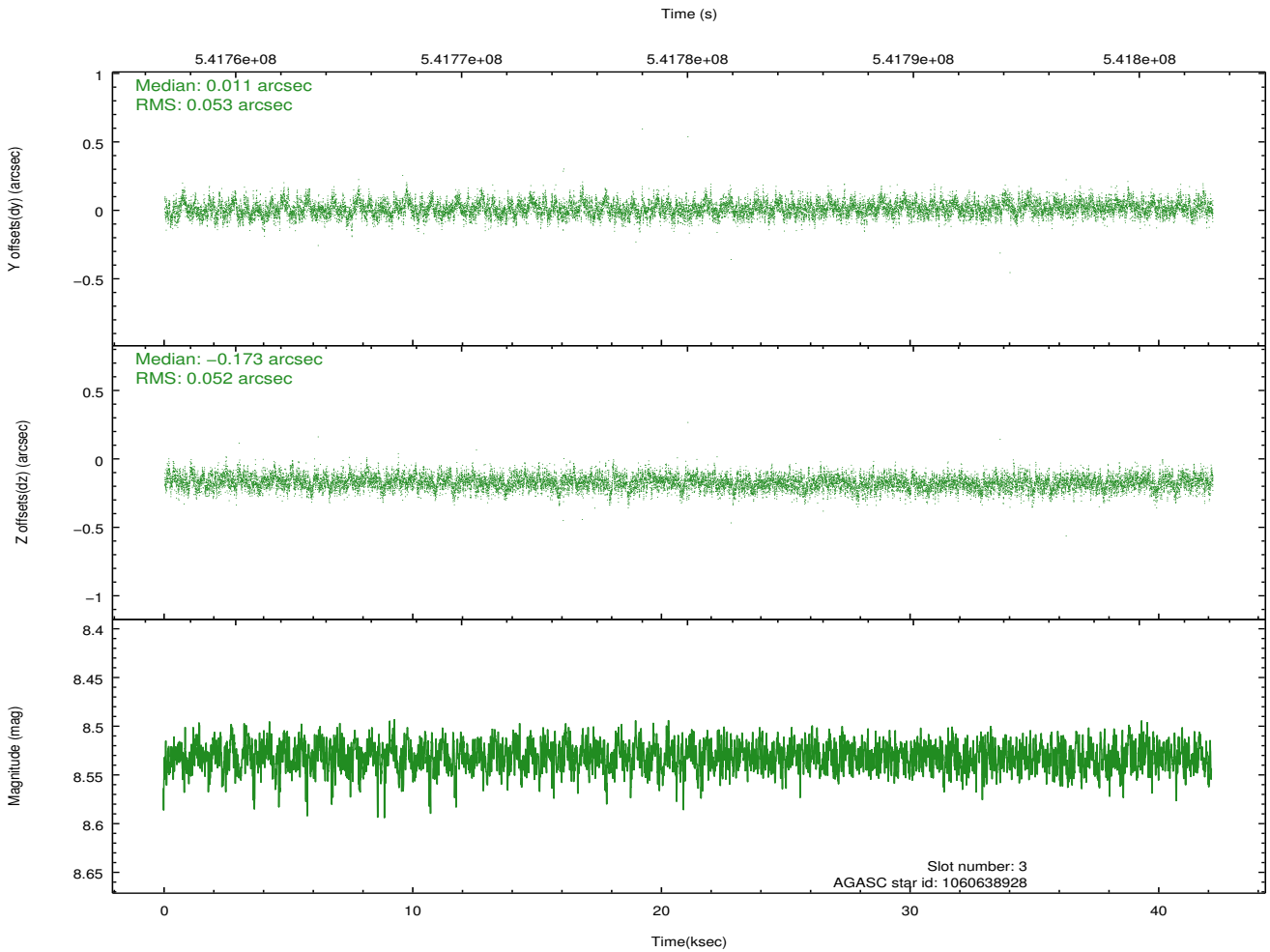
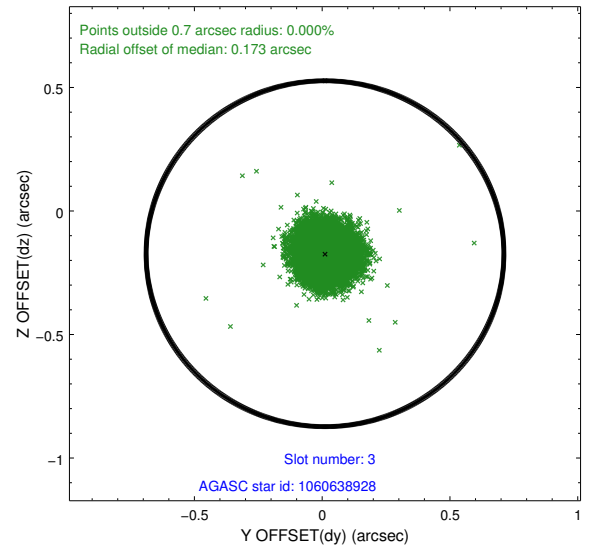
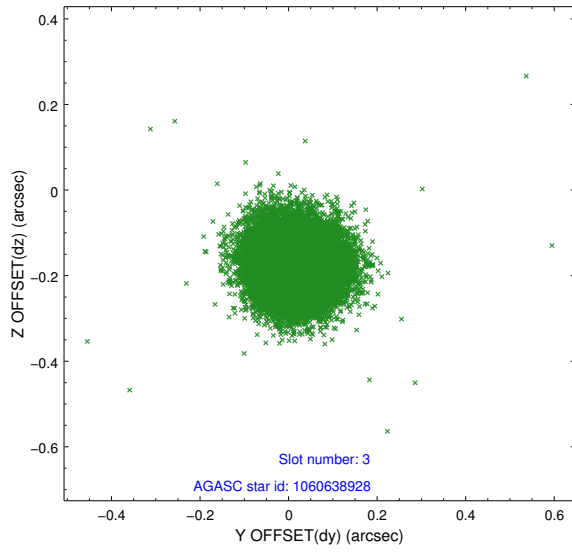


Slot Statistics

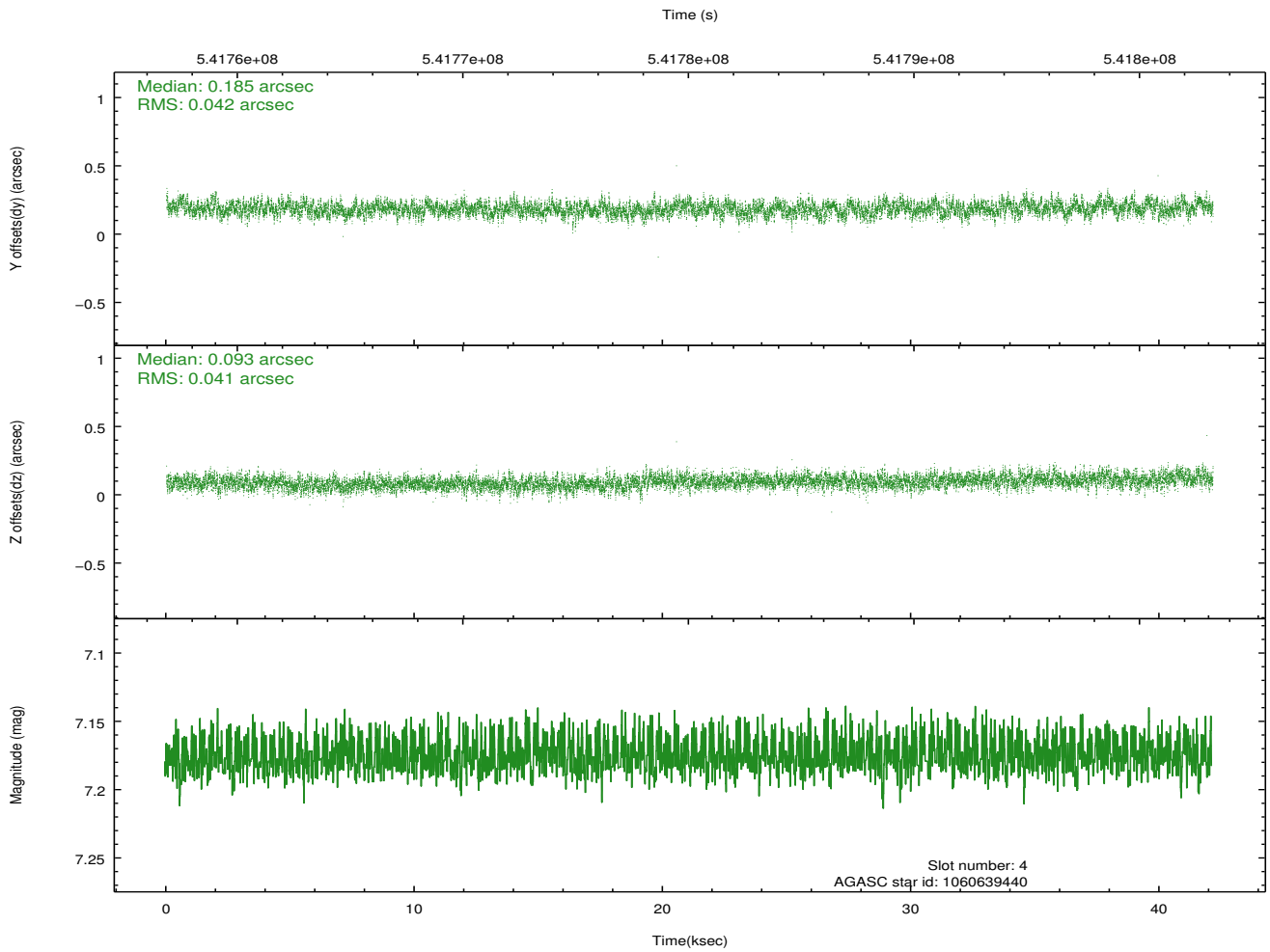
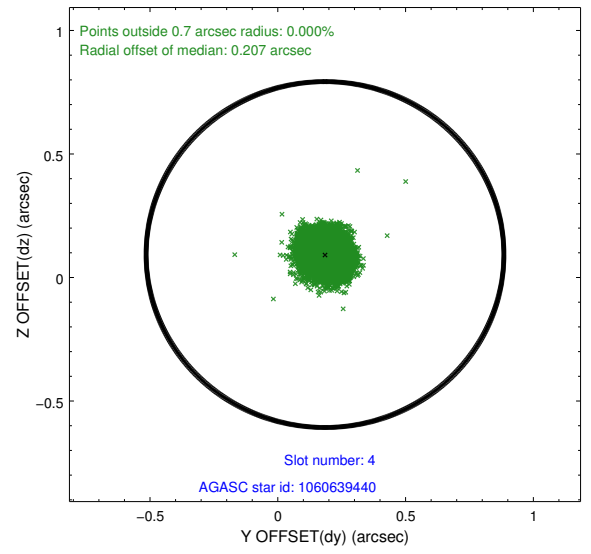
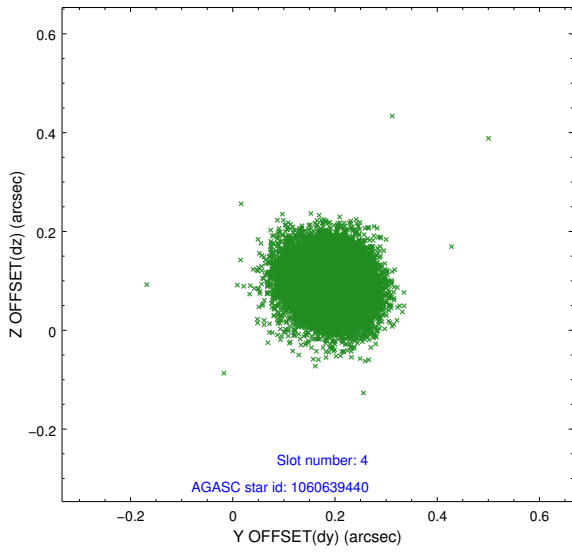
slot	status	used	id	mag	n_pts	med_dy	med_dz	dr1	dr2	ra	dec	mean_y	mean_z
0	FID		ACIS-S-2	7.01	10281	-0.100	-0.081	0.018	0.061	0.000000	0.000000	-771.10	-1739.51
1	FID		ACIS-S-4	7.10	10281	0.318	0.069	0.036	0.067	0.000000	0.000000	2142.63	169.10
2	FID		ACIS-S-5	7.12	10281	-0.249	0.017	0.021	0.036	0.000000	0.000000	-1824.06	162.75
3	GUIDE	used	1060638928	8.53	20554	0.011	-0.173	0.079	0.127	89.956871	-48.239688	78.68	41.52
4	GUIDE	used	1060639440	7.17	20555	0.185	0.093	0.062	0.102	89.427763	-48.256526	-226.47	-1190.28
5	GUIDE	used	1062350016	9.17	20552	-0.255	-0.202	0.125	0.209	90.899713	-48.365257	1180.72	2064.06
6	GUIDE	used	1060641552	9.03	20551	0.138	0.220	0.118	0.185	89.680000	-47.598204	-2323.90	70.12
7	GUIDE	used	1062344672	8.66	20510	-0.075	0.058	0.119	0.196	90.558832	-47.416825	-2323.29	2304.51

2.4 Star Slots

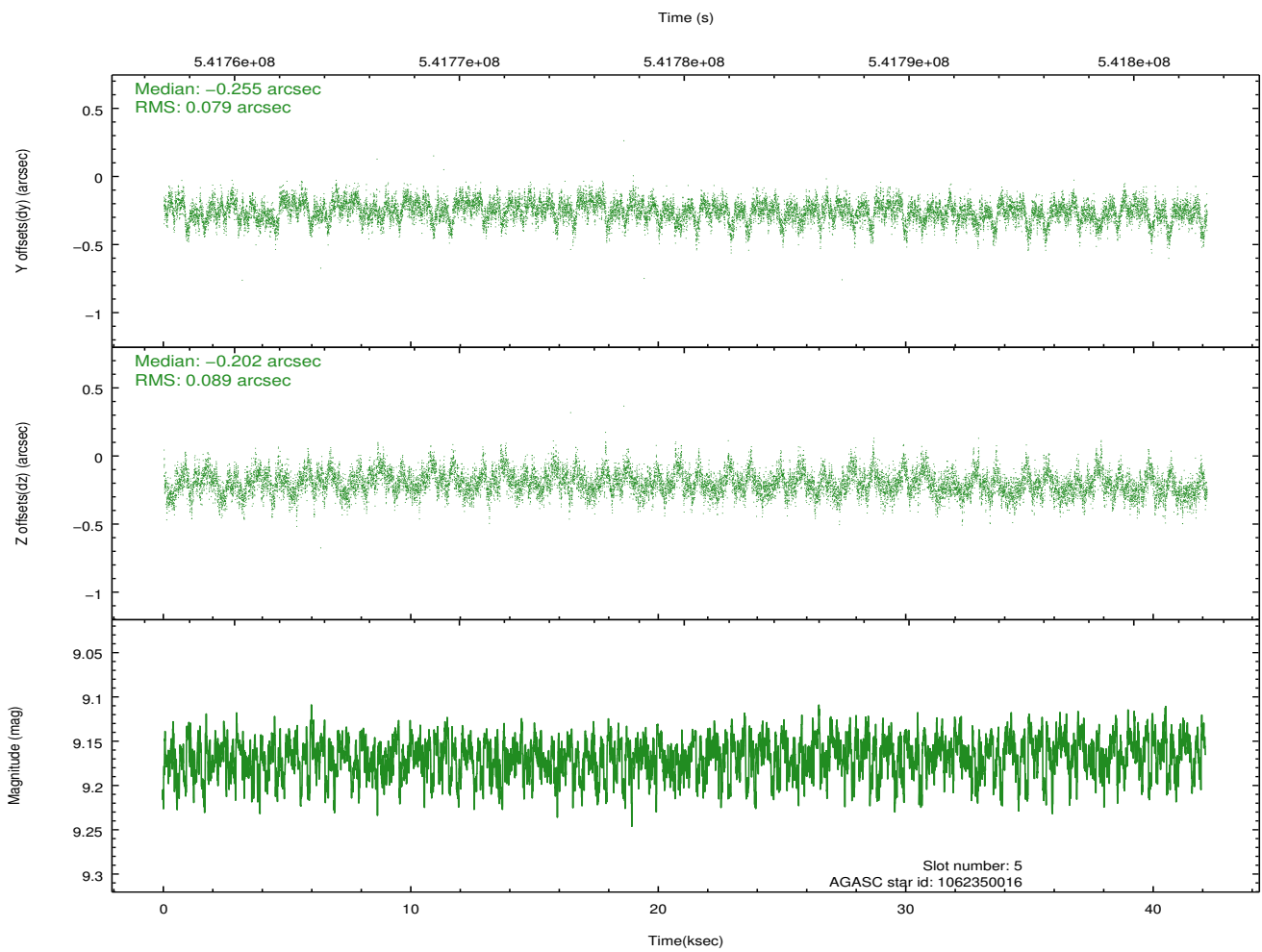
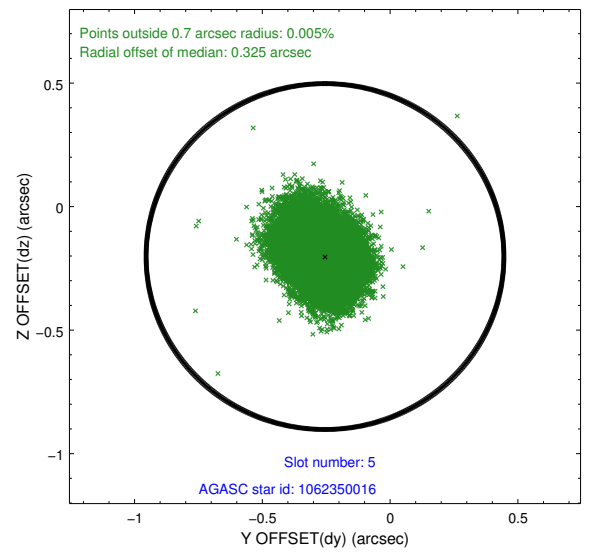
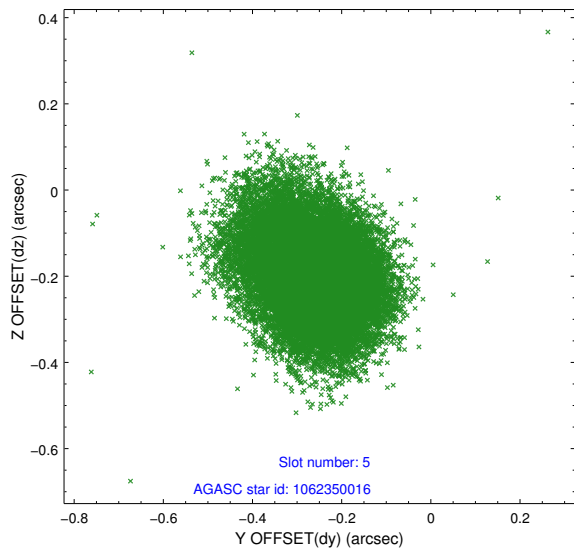
2.4.1 Slot 3



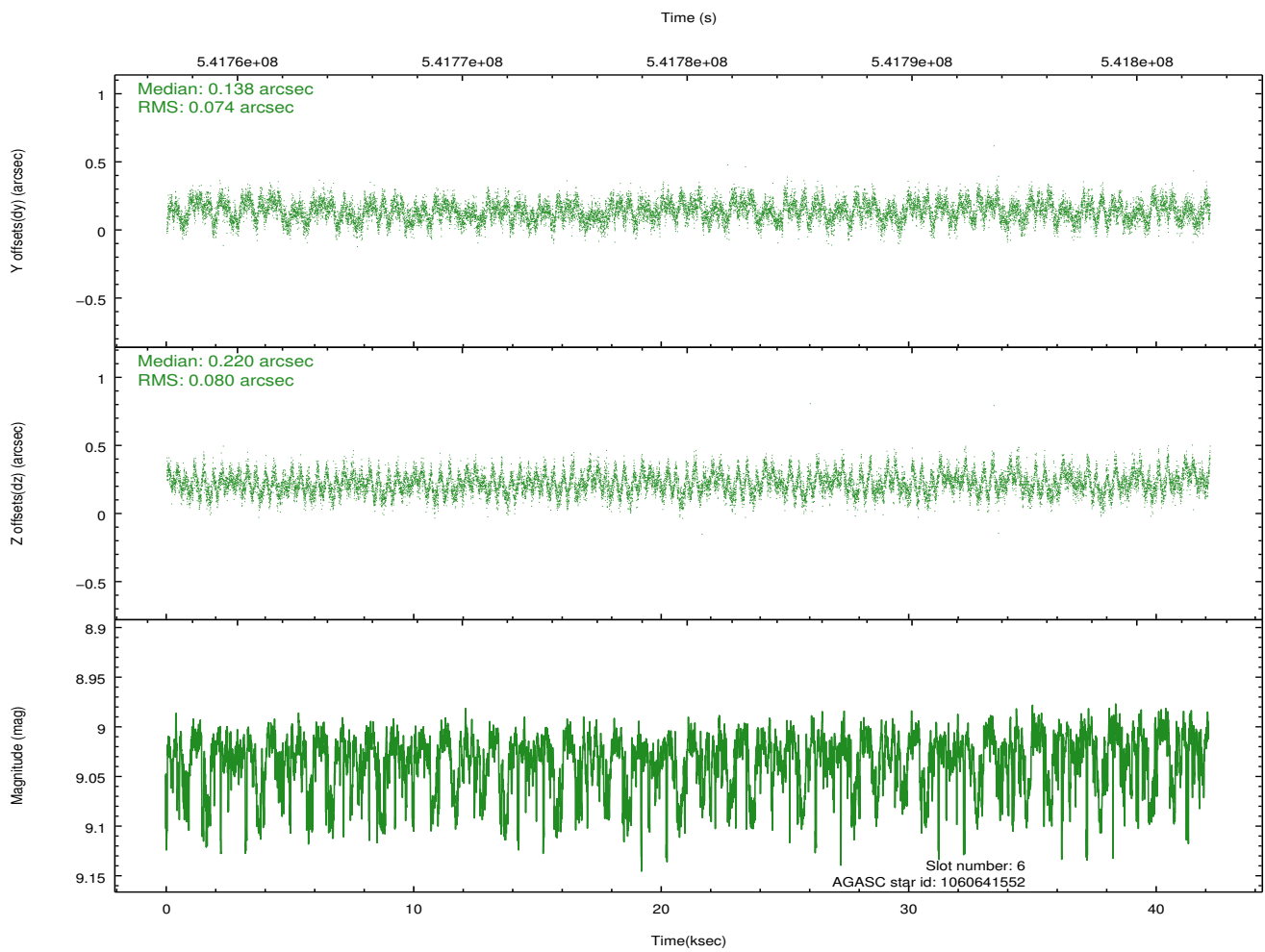
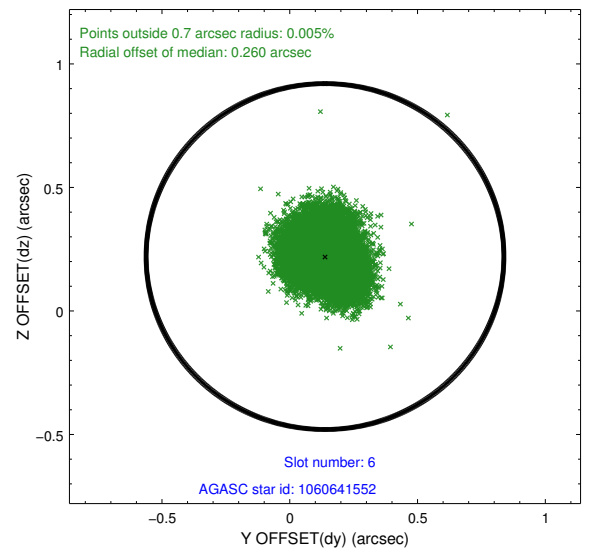
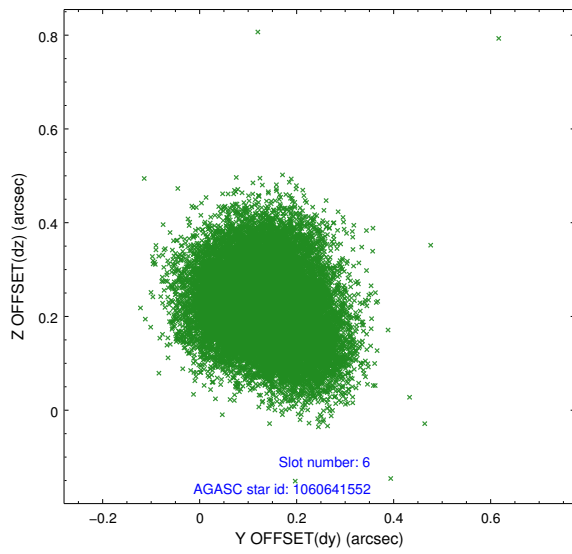
2.4.2 Slot 4



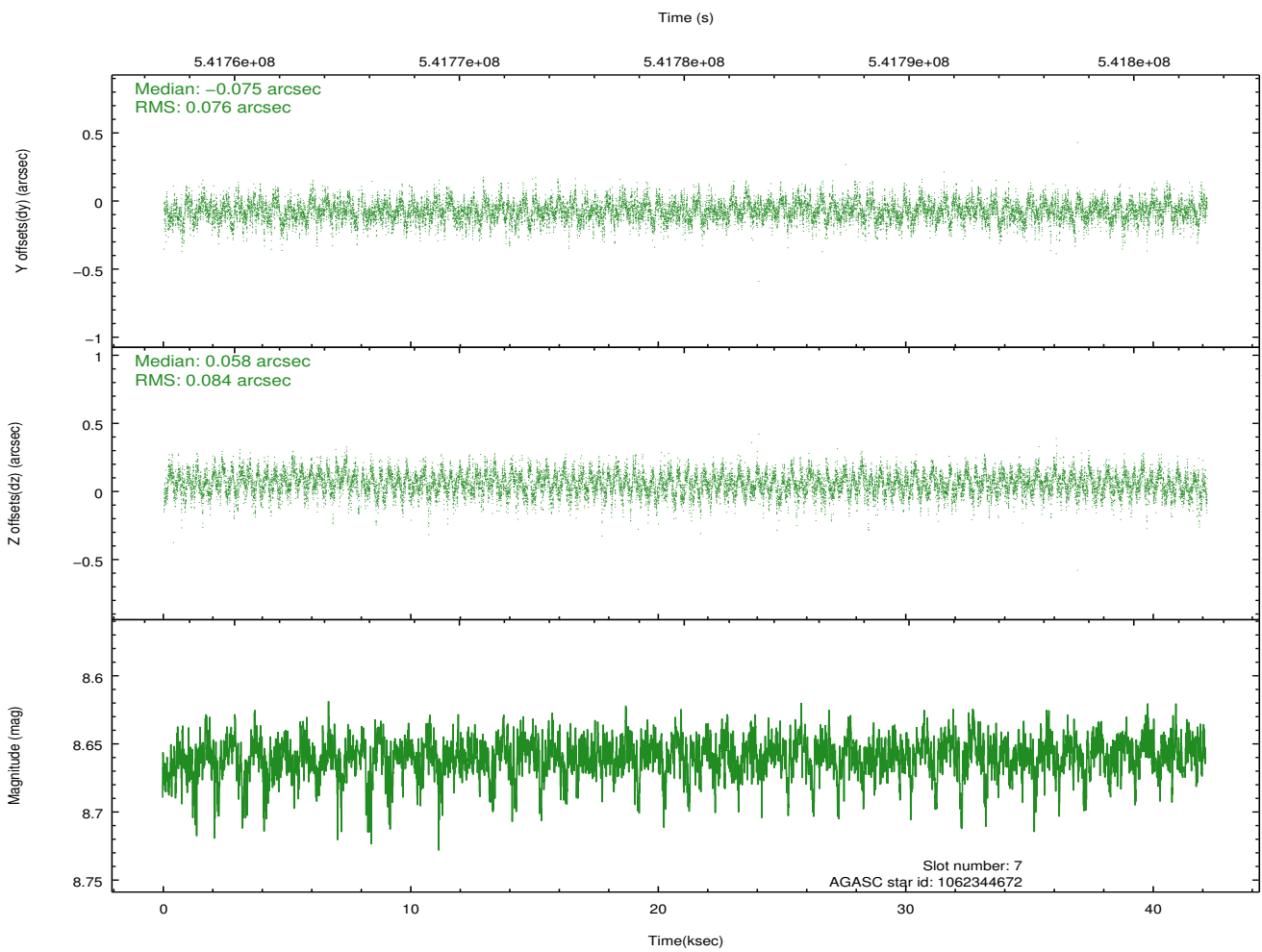
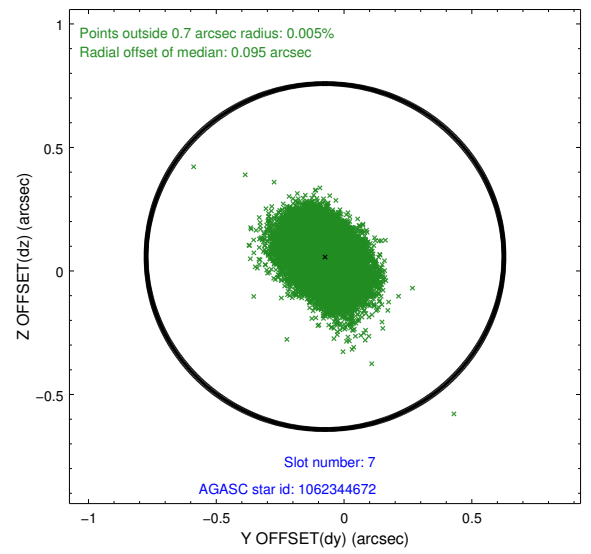
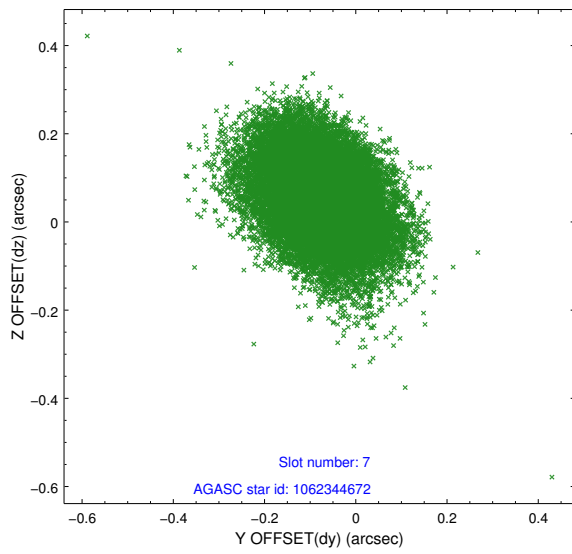
2.4.3 Slot 5



2.4.4 Slot 6

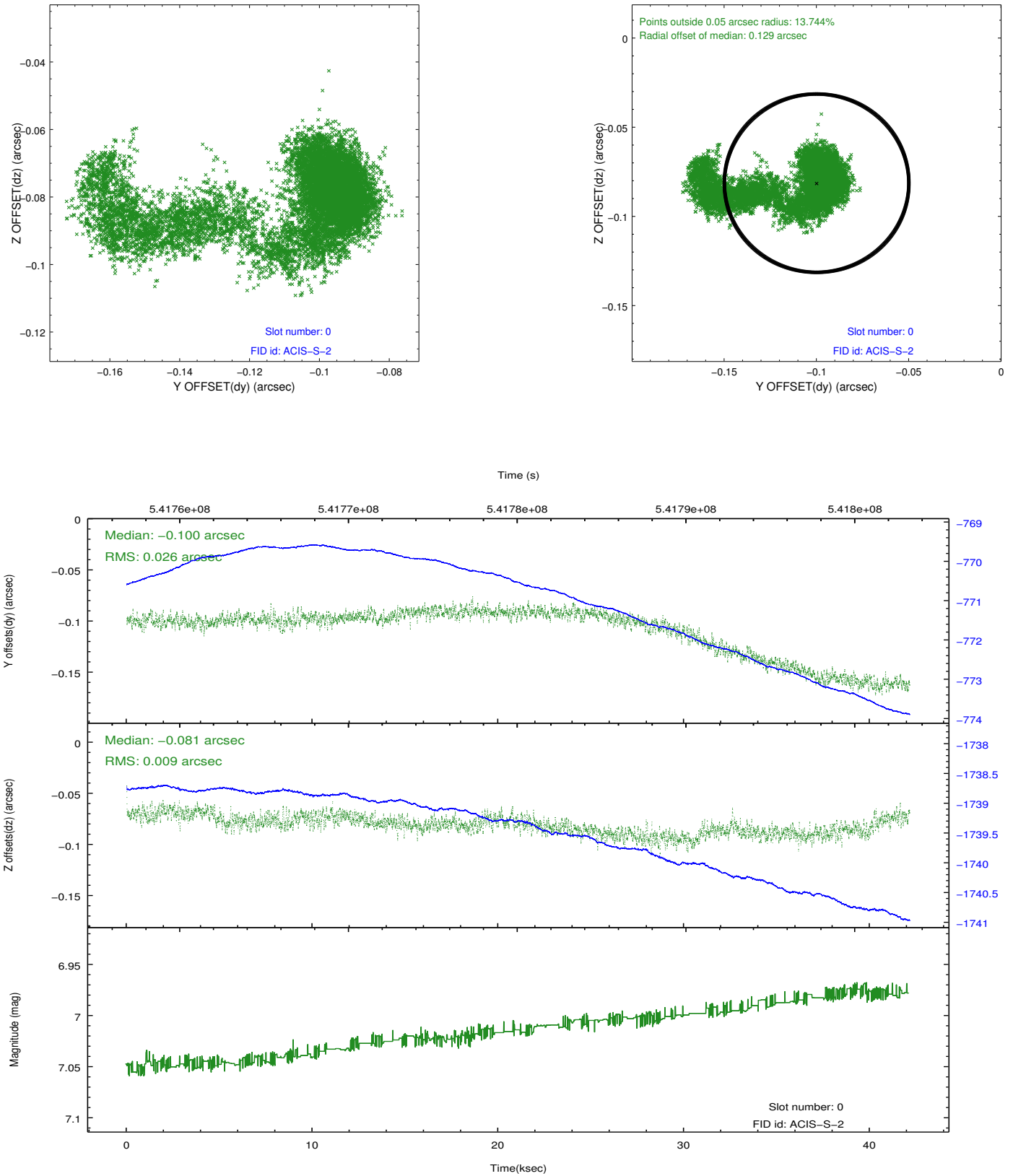


2.4.5 Slot 7

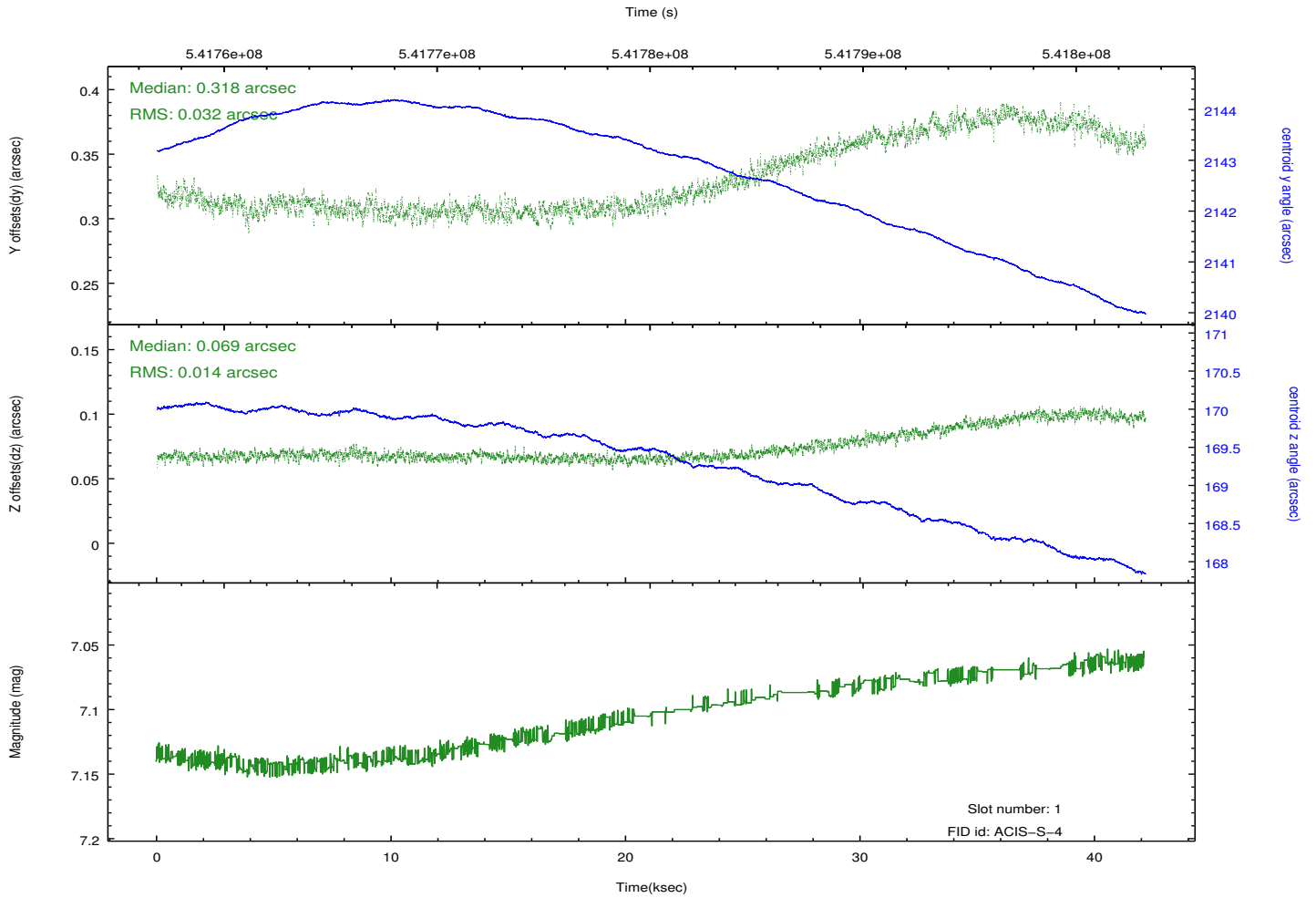
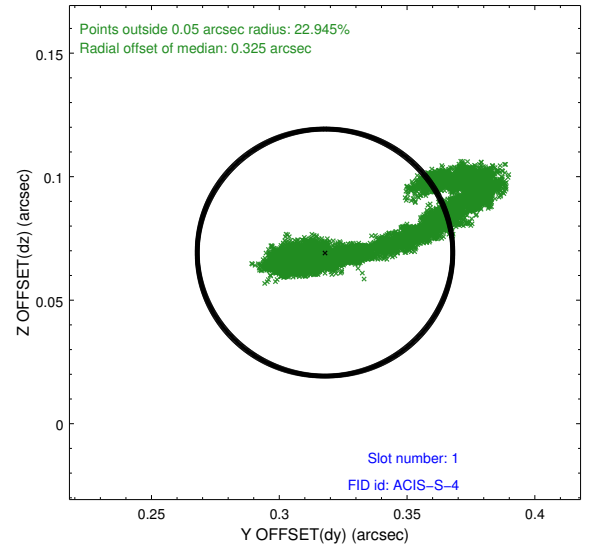
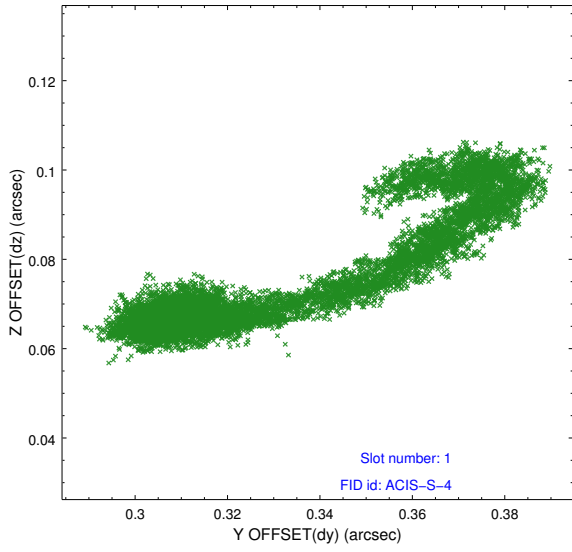


2.5 FID Slots

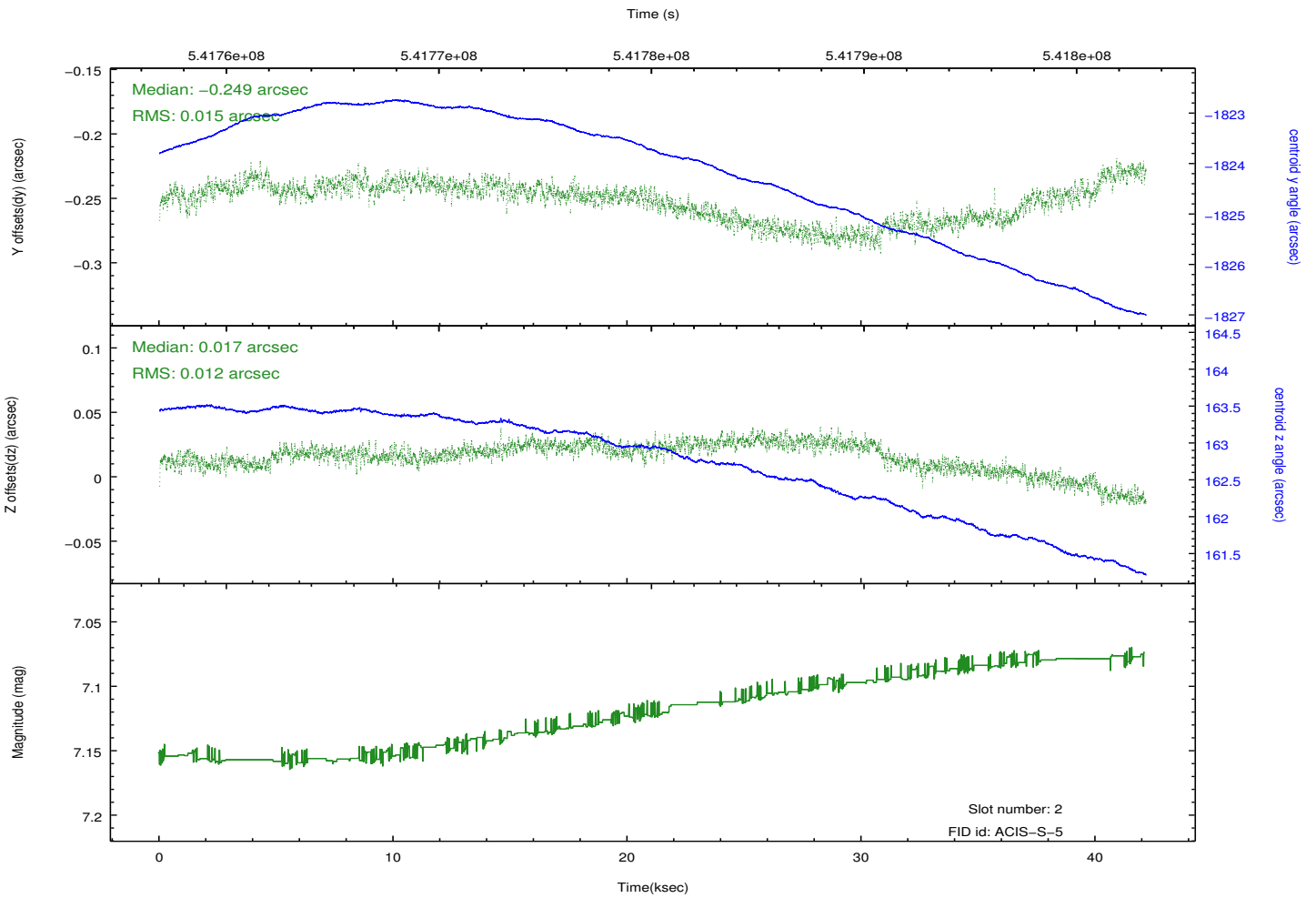
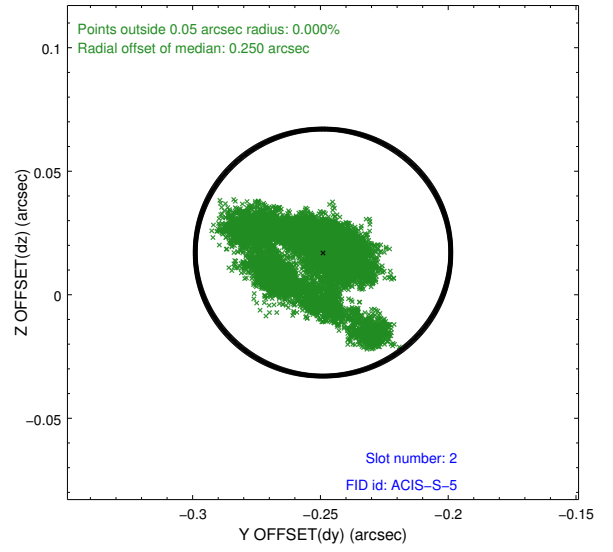
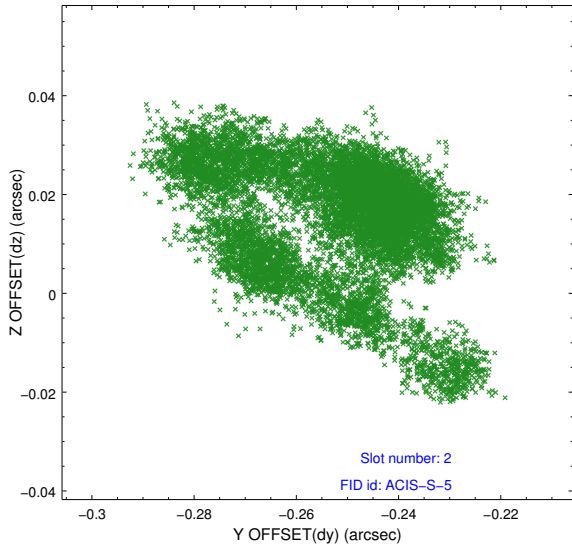
2.5.1 Slot 0



2.5.2 Slot 1



2.5.3 Slot 2



A Summary

A.1 Status

V&V Scientist	Beth Sundheim
V&V Date (YYYY-MM-DD)	2015.03.04
V&V Edition	1
V&V Disposition and Status	OK
V&V Charge Time	42.069597492337

A.2 Comments

Joint proposal with XMM.