

# V&V Reference Report

## L2 ASCDS Version : 10.3.3

Observation 17588 - L2 Version 1  
Chandra X-Ray Center

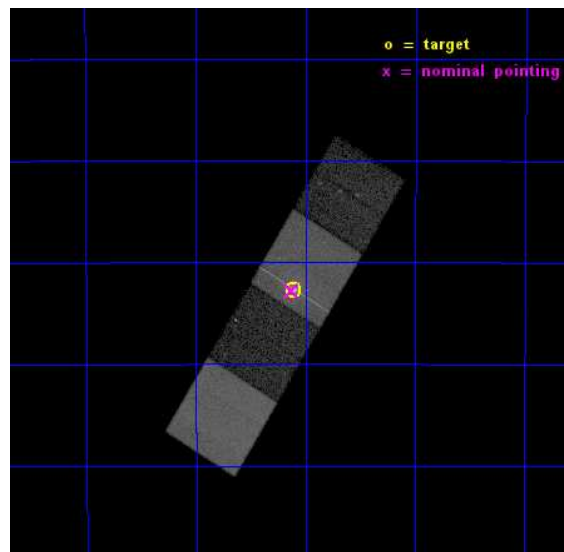
L2 Processing Date : Feb 8 2015

## Contents

<b>1</b>	<b>Front</b>	<b>2</b>
<b>2</b>	<b>OBI</b>	<b>3</b>
2.1	OBI . . . . .	3
2.1.1	Images . . . . .	3
2.1.2	Bias . . . . .	3
2.1.3	Parameters . . . . .	4
2.1.4	Events . . . . .	4
2.2	Compared Parameters . . . . .	5
2.3	Aspect . . . . .	6
2.4	Star Slots . . . . .	9
2.4.1	Slot 3 . . . . .	9
2.4.2	Slot 4 . . . . .	10
2.4.3	Slot 5 . . . . .	11
2.4.4	Slot 6 . . . . .	12
2.4.5	Slot 7 . . . . .	13
2.5	FID Slots . . . . .	14
2.5.1	Slot 0 . . . . .	14
2.5.2	Slot 1 . . . . .	15
2.5.3	Slot 2 . . . . .	16
<b>A</b>	<b>Summary</b>	<b>17</b>
A.1	Status . . . . .	17
A.2	Comments . . . . .	17

# 1 Front

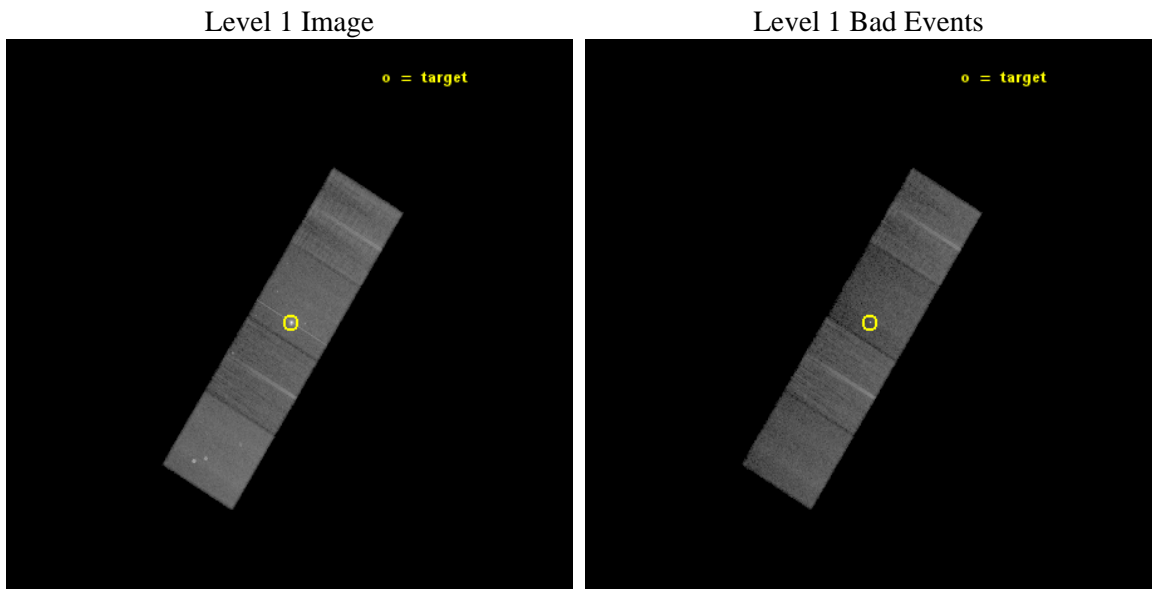
seq_num	300319	Sequence number
obs_id	17588	Observation id
title	Determining the Nature of an 18-minute UV source in NGC 1851	Propo
observer	Dr. David Pooley	Principal investigator
object	NGC 1851	Source name
dtycle	0	&#160
cycle	P	events from which exps? Prim/Second/Both
ra_targ	78.527917	Observer's specified target RA [deg]
dec_targ	-40.046694	Observer's specified target Dec [deg]
ra_nom	78.531958023021	Nominal RA [deg]
dec_nom	-40.046798005456	Nominal Dec [deg]
roll_nom	301.4592275989	Nominal Roll [deg]
revision	1	Processing version of data
ontime	28055.000215888	Sum of GTIs [s]
lvertime	27688.440984277	Livetime [s]
ontime5	28055.000215888	Sum of GTIs [s]
ontime6	28055.000215888	Sum of GTIs [s]
ontime7	28055.000215888	Sum of GTIs [s]
ontime8	28048.718165636	Sum of GTIs [s]
l2events	214595	Number of level 2 events



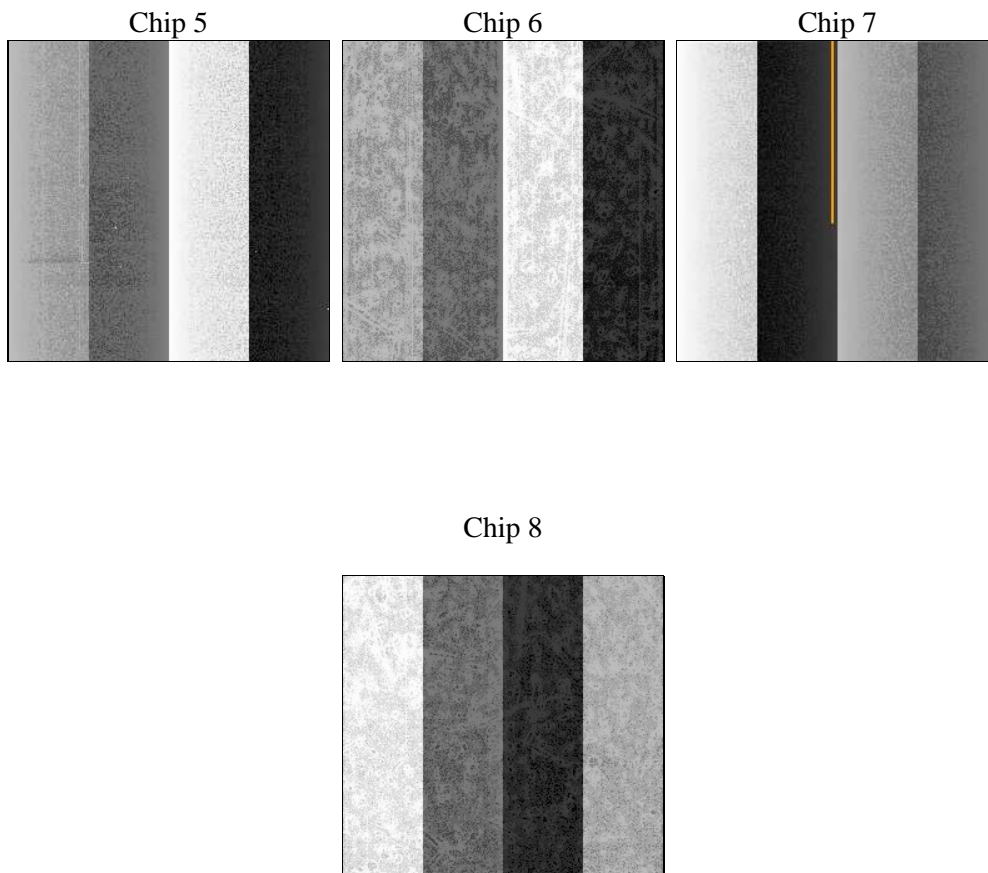
## 2 OBI

### 2.1 OBI

#### 2.1.1 Images



#### 2.1.2 Bias



### 2.1.3 Parameters

obi_num	0	Obi number	sched_exp_time	28000.000000	[s] Scheduled observation exposure time
ascdsver	10.3.3	Processing system revision	ontime	28055.000215888	Sum of GTIs [s]
caldsver	4.6.6	&#160	ontime5	28055.000215888	Sum of GTIs [s]
date	2015-02-08T13:22:44	Date and time of file creation	ontime6	28055.000215888	Sum of GTIs [s]
revision	1	Processing version of data	ontime7	28055.000215888	Sum of GTIs [s]
			ontime8	28048.718165636	Sum of GTIs [s]
			l1events	662457	Number of level 1 events

### 2.1.4 Events

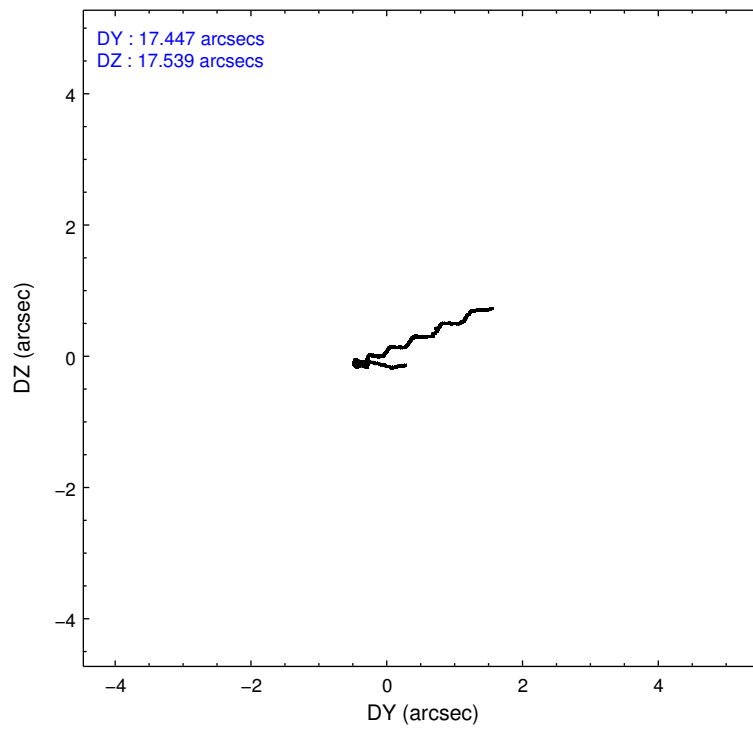
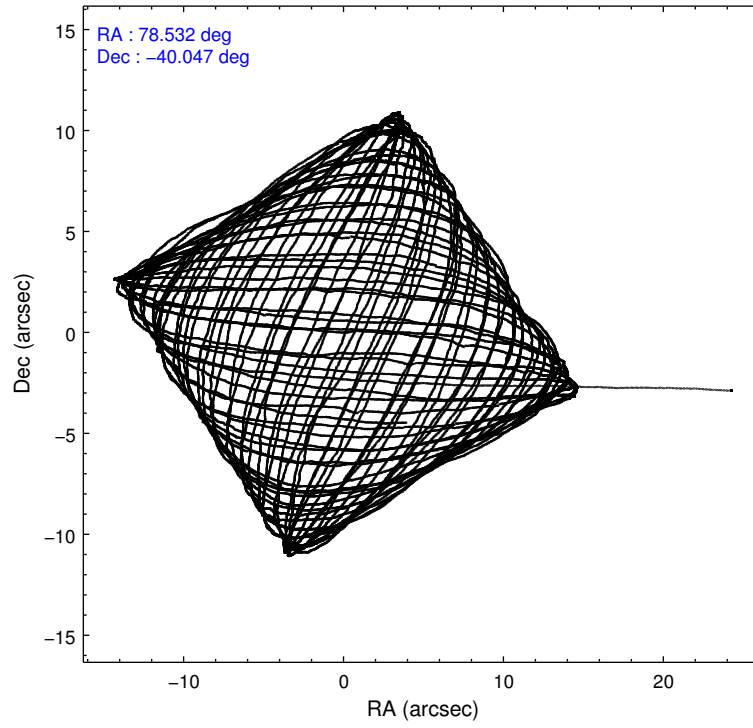
	ccd 5	ccd 6	ccd 7	ccd 8
level 1 events	191956	128677	176446	165378
rejected events	93387	112544	81630	120327
rejected %	48%	87%	46%	72%

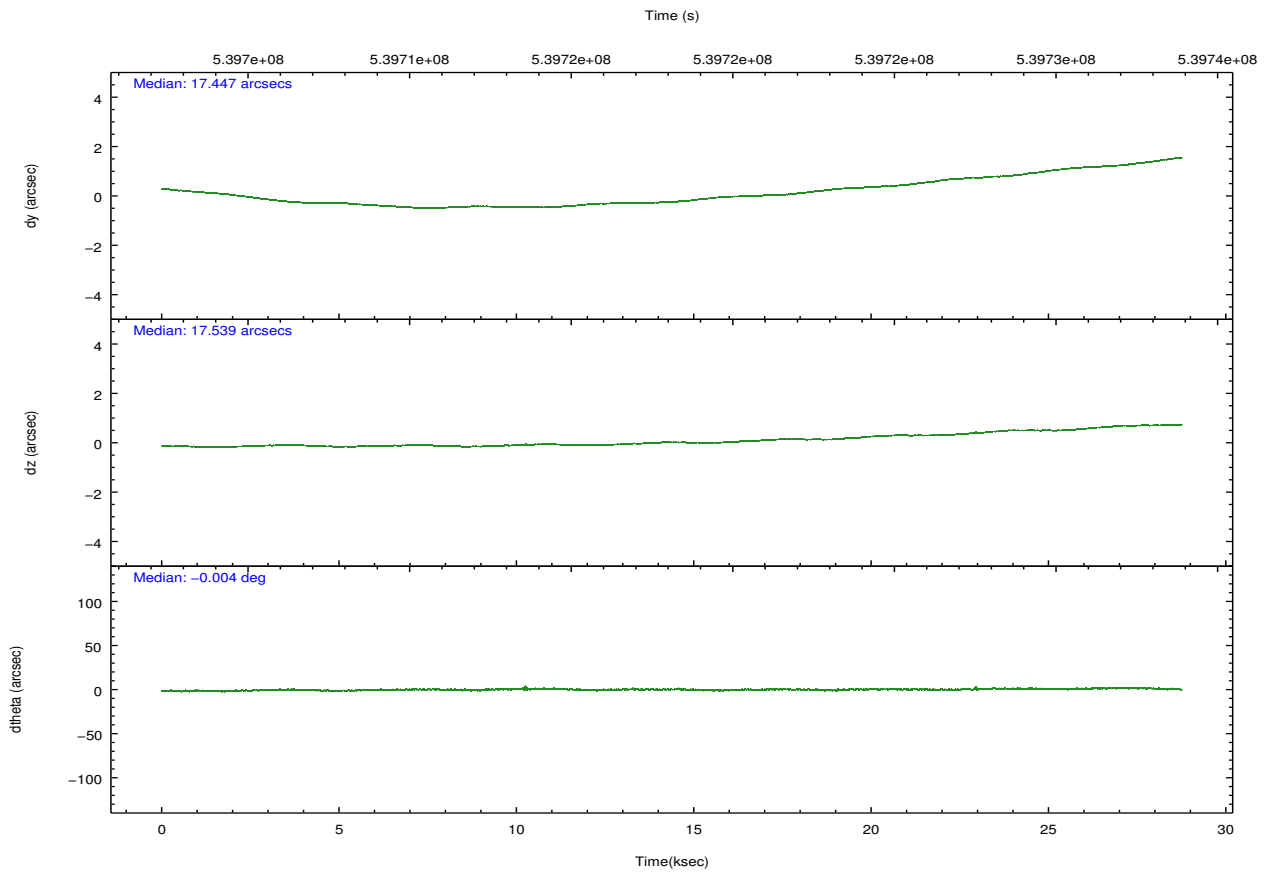
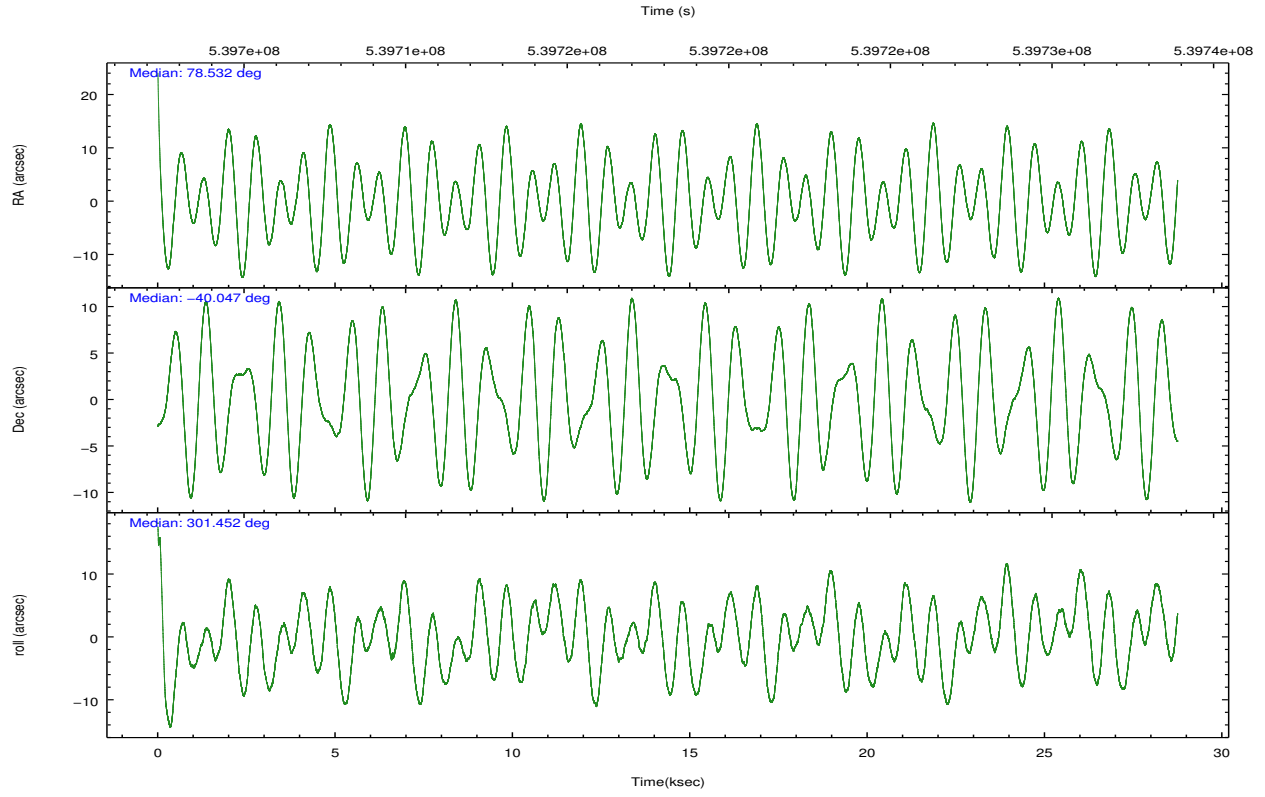
	ccd 5	ccd 6	ccd 7	ccd 8
grade 0 events	9145	5881	12815	12592
	4%	4%	7%	7%
grade 1 events	423	69	537	141
	0%	0%	0%	0%
grade 2 events	30468	3622	21655	11129
	15%	2%	12%	6%
grade 3 events	3405	1628	8550	4679
	1%	1%	4%	2%
grade 4 events	3282	1534	8535	4474
	1%	1%	4%	2%
grade 5 events	13866	5465	16385	8699
	7%	4%	9%	5%
grade 6 events	52295	3471	43286	12182
	27%	2%	24%	7%
grade 7 events	79072	107007	64683	111482
	41%	83%	36%	67%

## 2.2 Compared Parameters

Parameter	Planned	Actual	Parameter	Planned	Actual
Instrument	ACIS	ACIS	Obspar format version number	7	7
Detector	ACIS-5678	ACIS-5678	Obspar file type	PREDICTED	ACTUAL
Grating	NONE	NONE	Obspar update status	NONE	UPDATED
Data mode	VFAINT	VFAINT	CCD I0 on	N	N
Observation mode	POINTING	POINTING	CCD I1 on	N	N
[deg] Pointing RA	78.500264	78.53195802302133	CCD I2 on	N	N
[deg] Pointing Dec	-40.034008	-40.04679800545647	CCD I3 on	N	N
[deg] Pointing Roll	301.282211	301.4592275988981	CCD S0 on	N	N
[mm] SIM focus pos	-0.684267	-0.6828225247311905	CCD S1 on	O1	Y
[mm] SIM defocus	0	0.001444936568705701	CCD S2 on	O3	Y
[mm] SIM translation stage pos	-190.132523	-190.1400660498719	CCD S3 on	Y	Y
[mm] SIM translation stage offset	0	0.00754346686406393	CCD S4 on	O2	Y
[s] Observation start time (MET)	539704500.184000	539702981.13317	CCD S5 on	N	N
Observation start date	2015-02-07T13:53:53	2015-02-07T13:29:41	Number of optional ACIS chips dropped	0	0
[s] Observation end time (MET)	539732500.184000	539733043.35985	On-chip summing requested	N	N
Observation end date	2015-02-07T21:40:33	2015-02-07T21:50:43	Subarray requested	NONE	NONE
Read mode	TIMED	TIMED	Alternating exposures requested	N	N
			[s] Primary exposure time	0.000000	3.1

## 2.3 Aspect





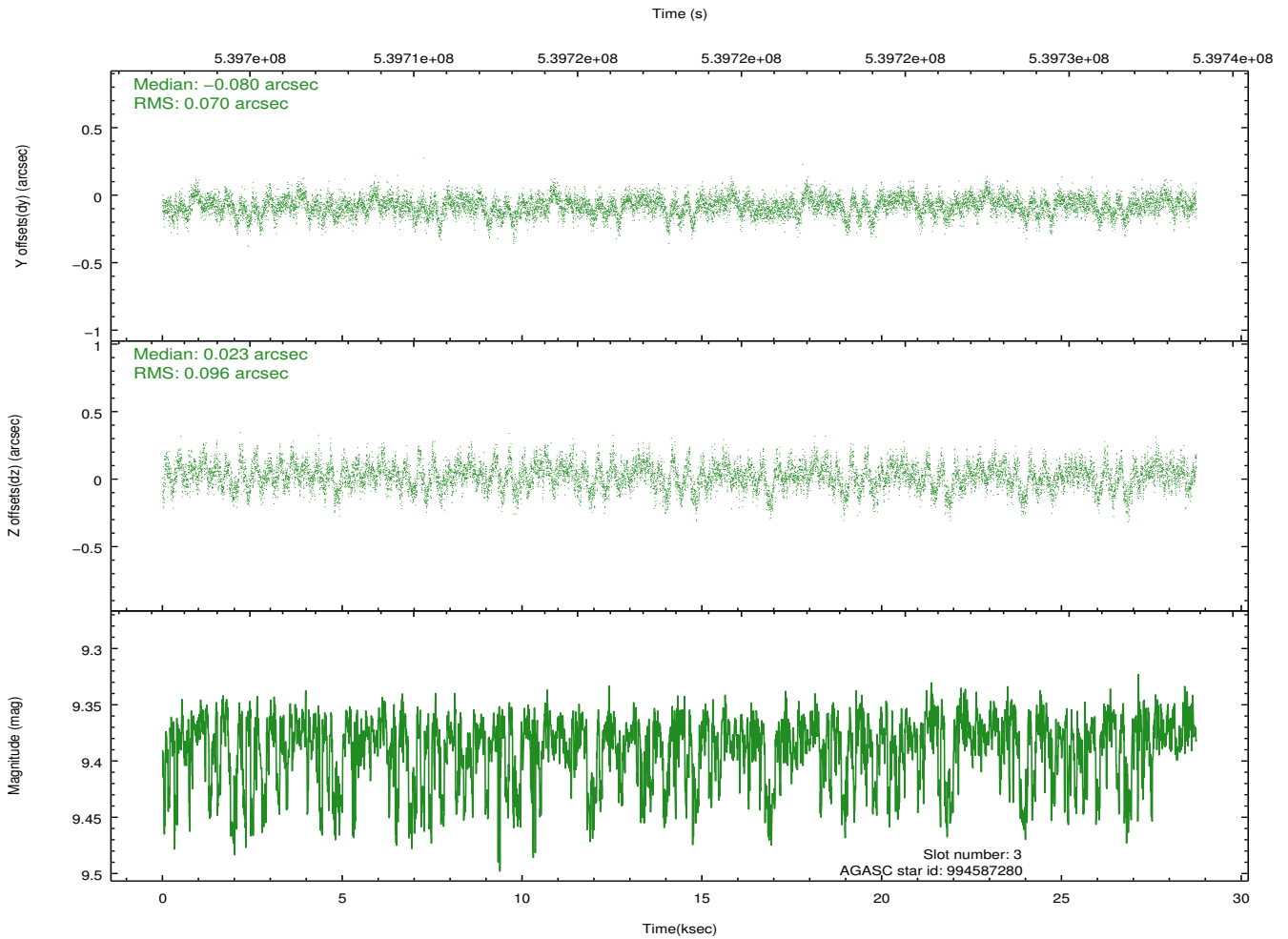
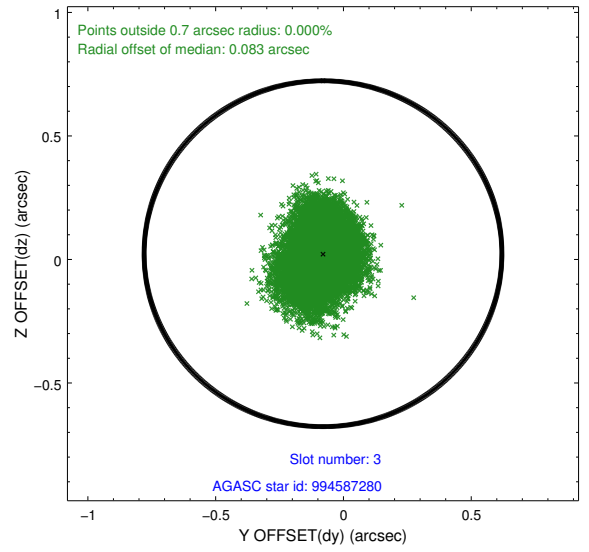
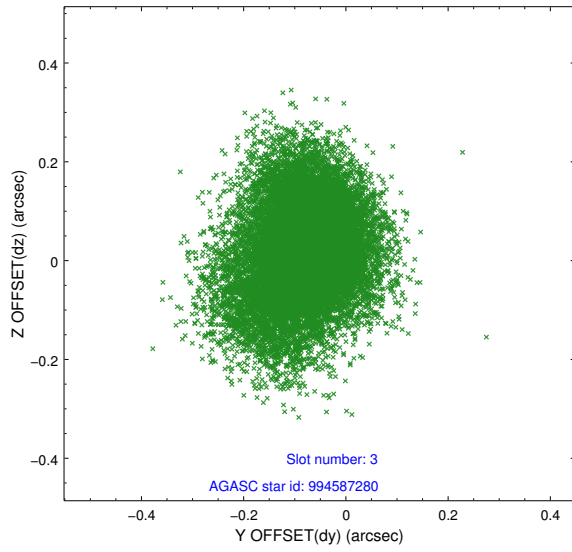
### Slot Statistics

slot	status	used	id	mag	n_pts	med_dy	med_dz	dr1	dr2	ra	dec	mean_y	mean_z
0	FID		ACIS-S-2	7.05	7011	-0.090	-0.079	0.011	0.024	0.000000	0.000000	-770.75	-1739.17
1	FID		ACIS-S-4	7.14	7012	0.317	0.064	0.013	0.041	0.000000	0.000000	2142.92	169.35
2	FID		ACIS-S-5	7.16	7011	-0.260	0.023	0.014	0.022	0.000000	0.000000	-1823.64	163.09
3	GUIDE	used	994587280	9.38	14013	-0.080	0.023	0.126	0.208	78.857559	-39.654304	-652.38	1555.34
4	GUIDE	used	994591280	9.43	14005	-0.314	0.138	0.132	0.214	78.571374	-39.417594	-1794.06	1321.59
5	GUIDE	used	994975984	9.41	14020	0.271	0.128	0.139	0.234	78.288216	-40.065810	-204.48	-558.60
6	GUIDE	used	994979816	8.81	14013	0.084	-0.082	0.094	0.152	78.007515	-40.348161	268.26	-1743.79
7	GUIDE	used	994975768	9.40	14009	0.040	-0.199	0.120	0.194	79.640022	-40.207877	2179.21	2343.07

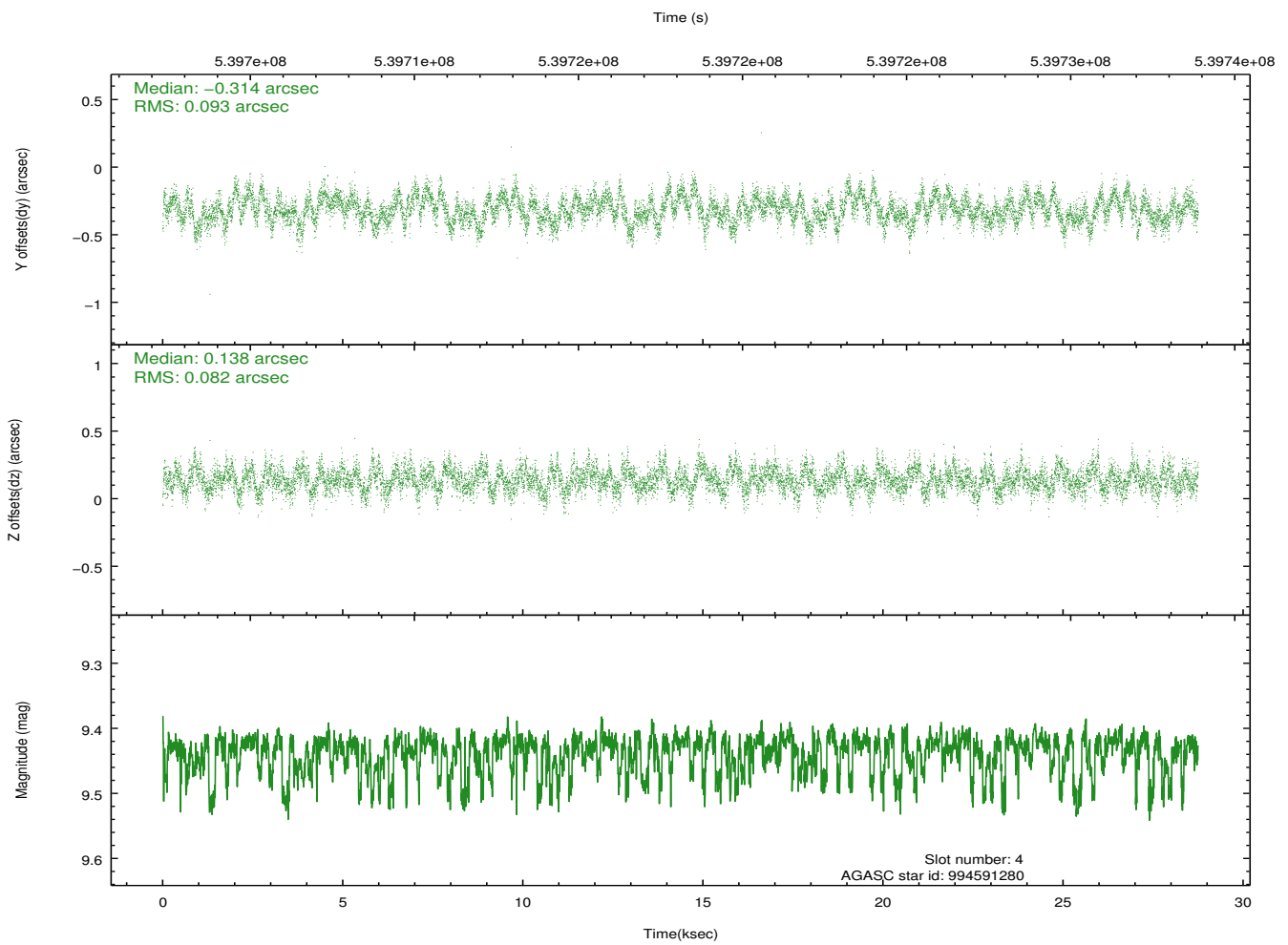
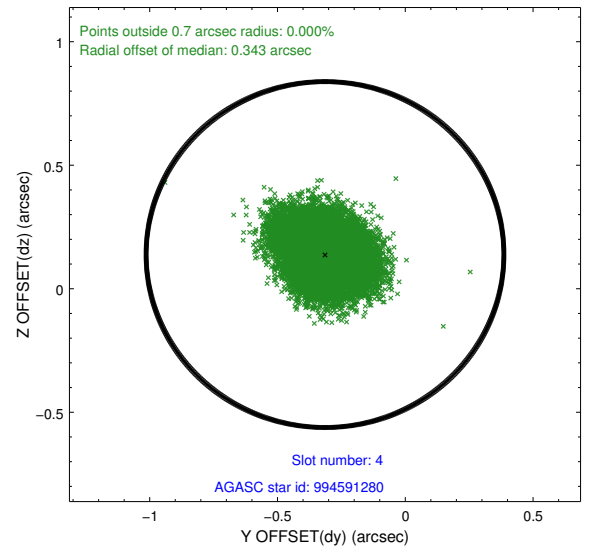
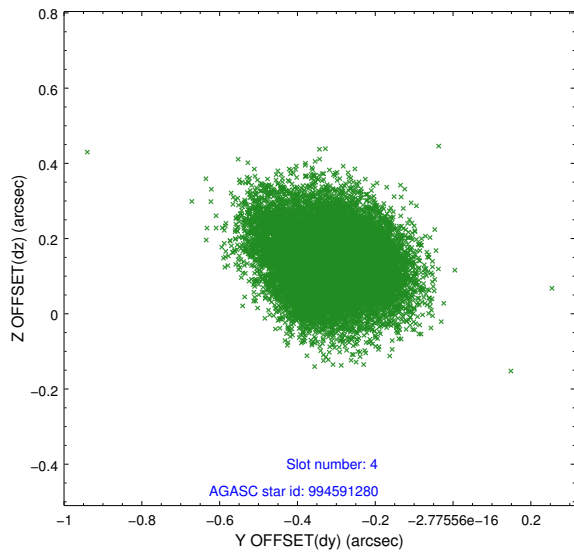
∞

## 2.4 Star Slots

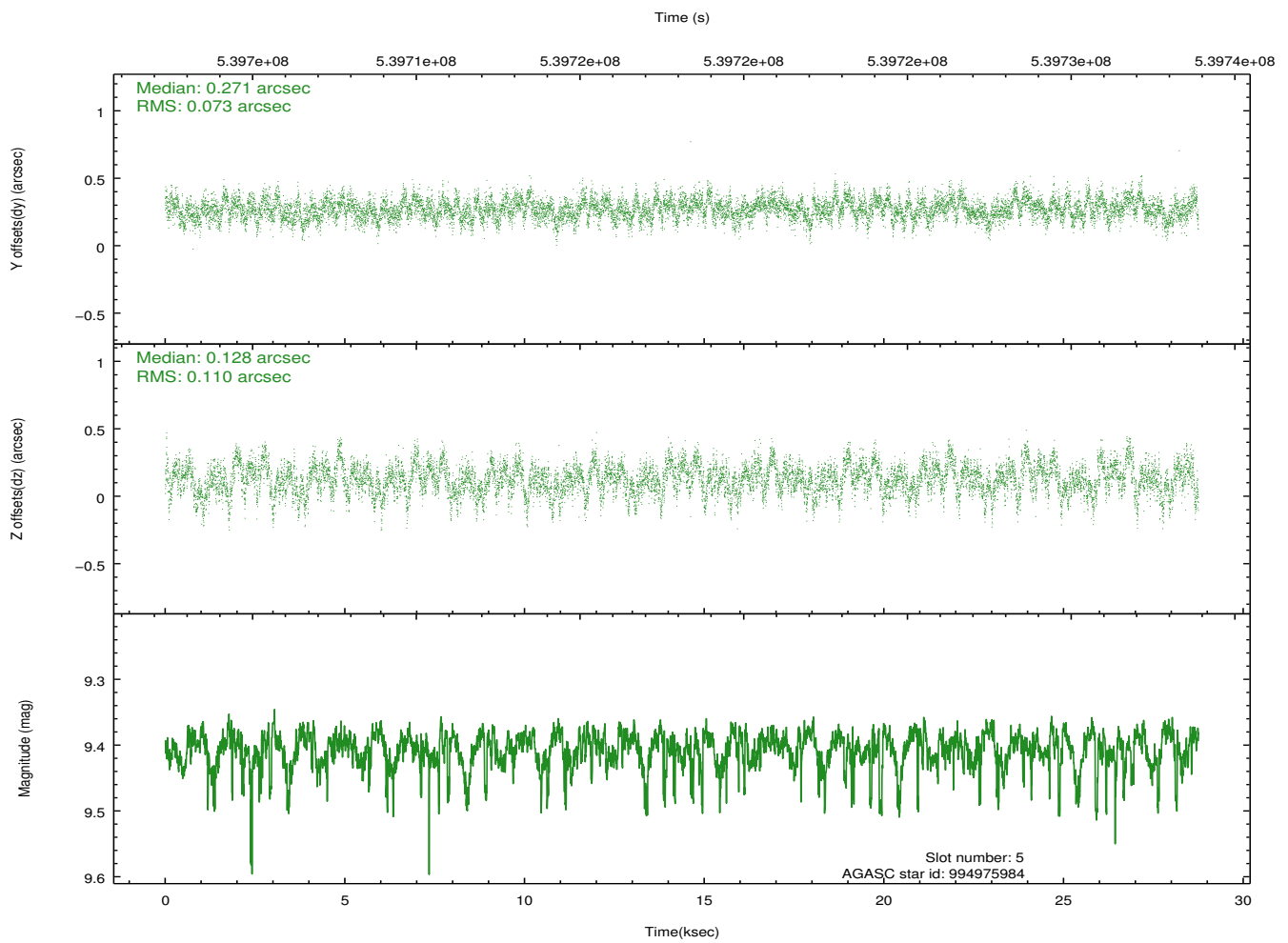
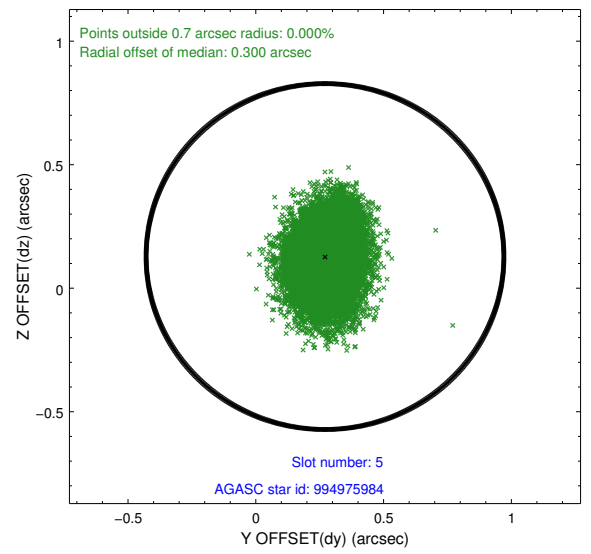
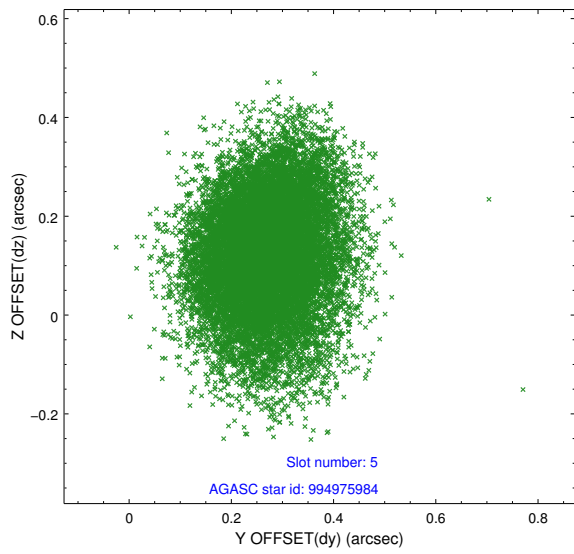
### 2.4.1 Slot 3



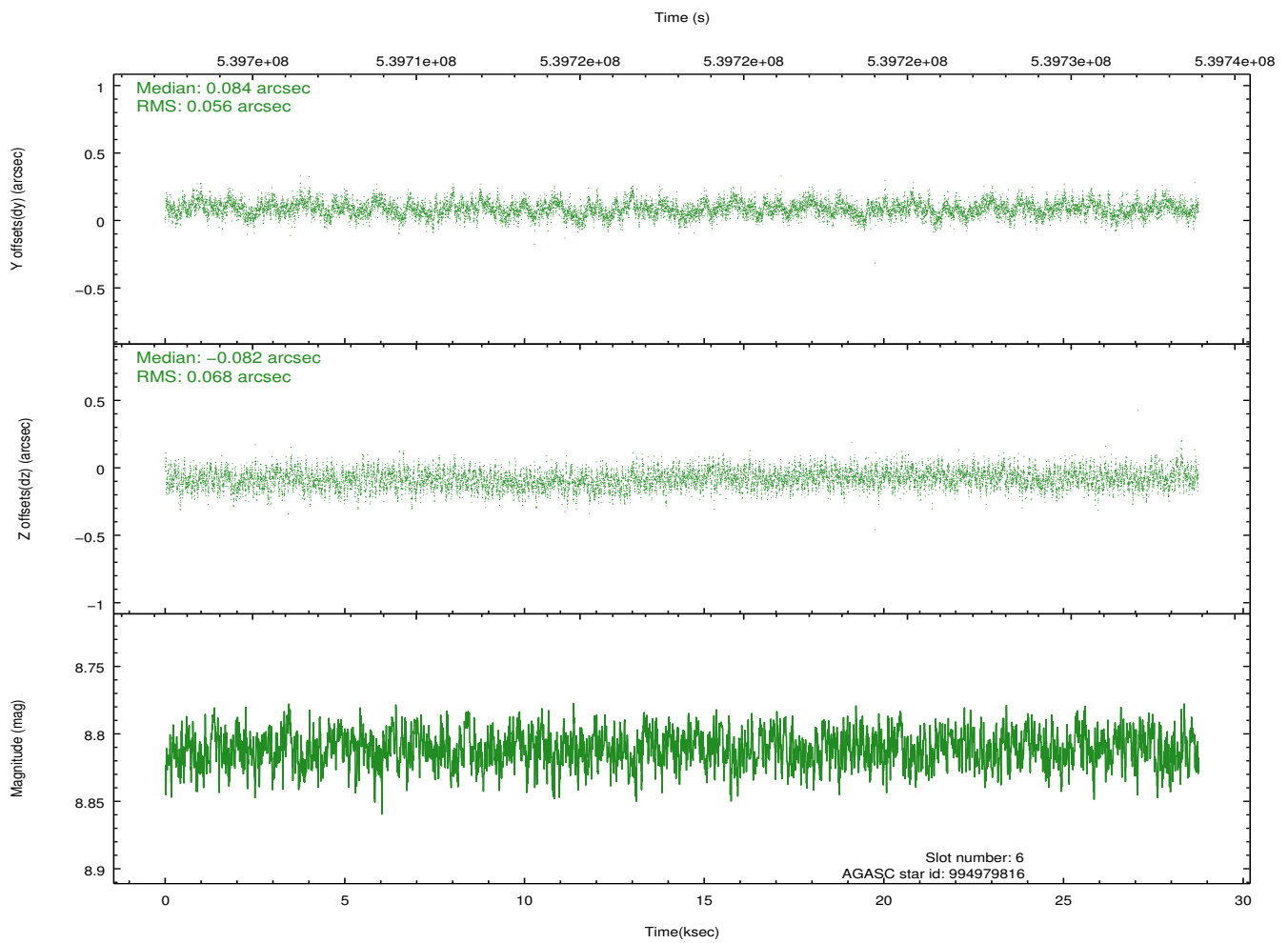
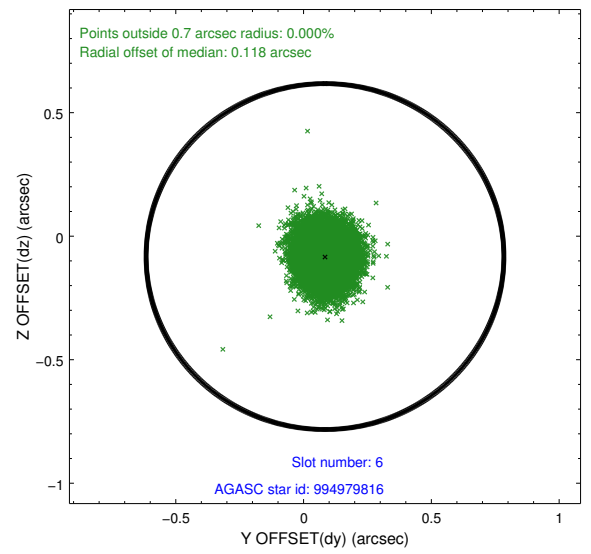
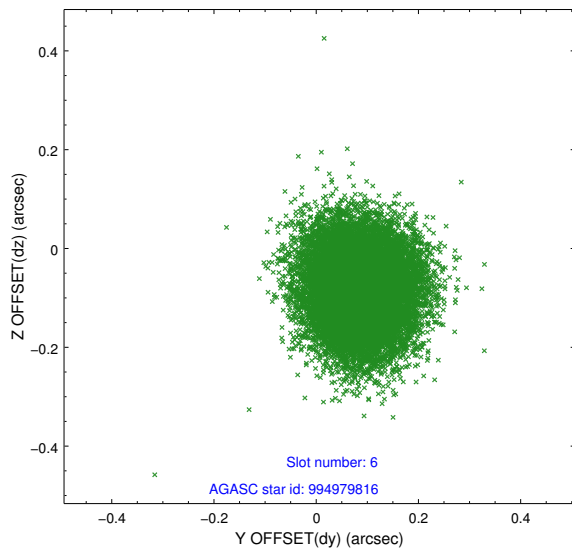
## 2.4.2 Slot 4



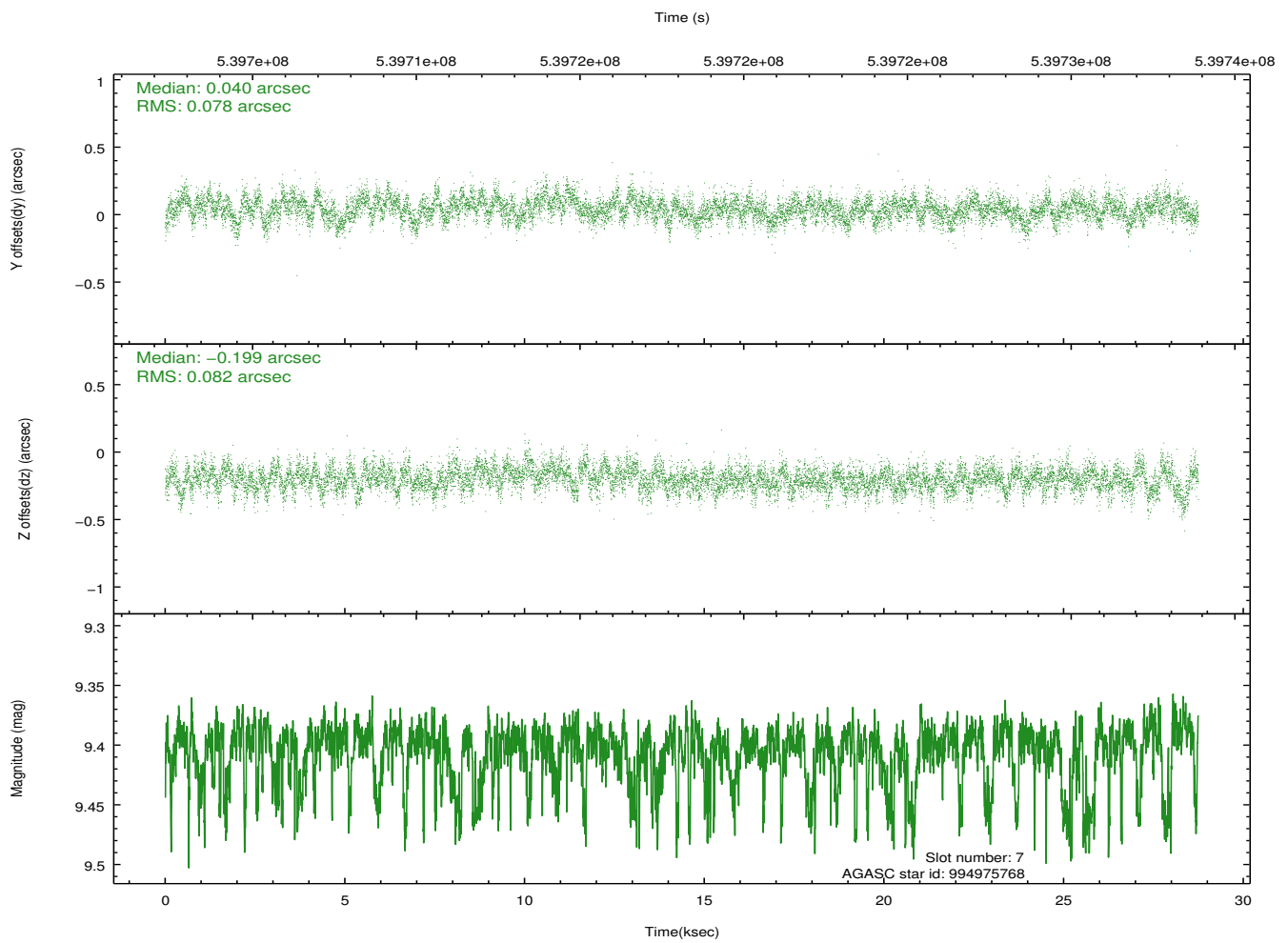
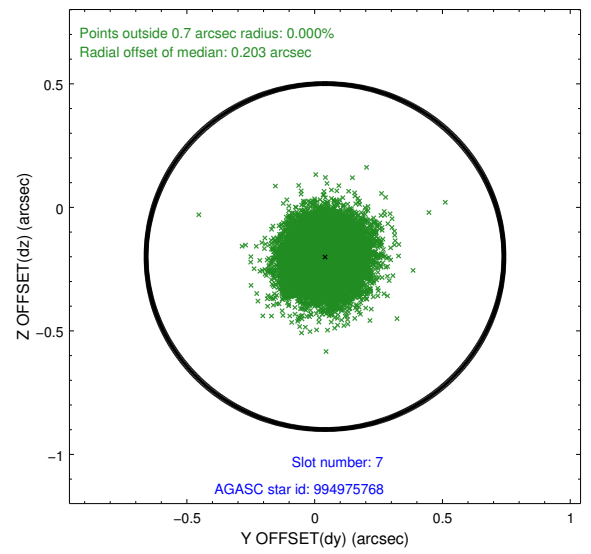
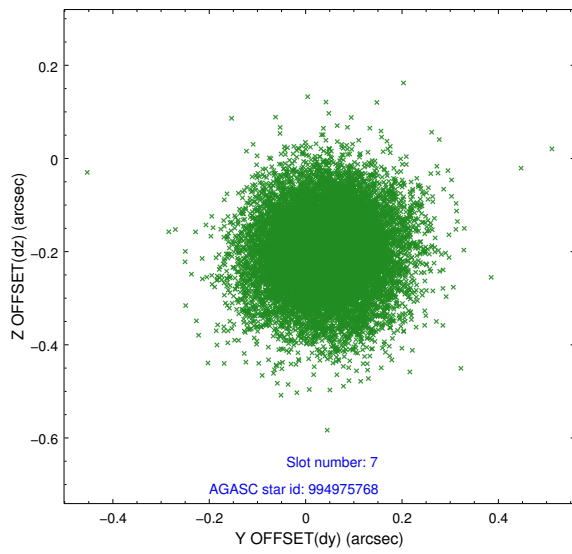
### 2.4.3 Slot 5



## 2.4.4 Slot 6

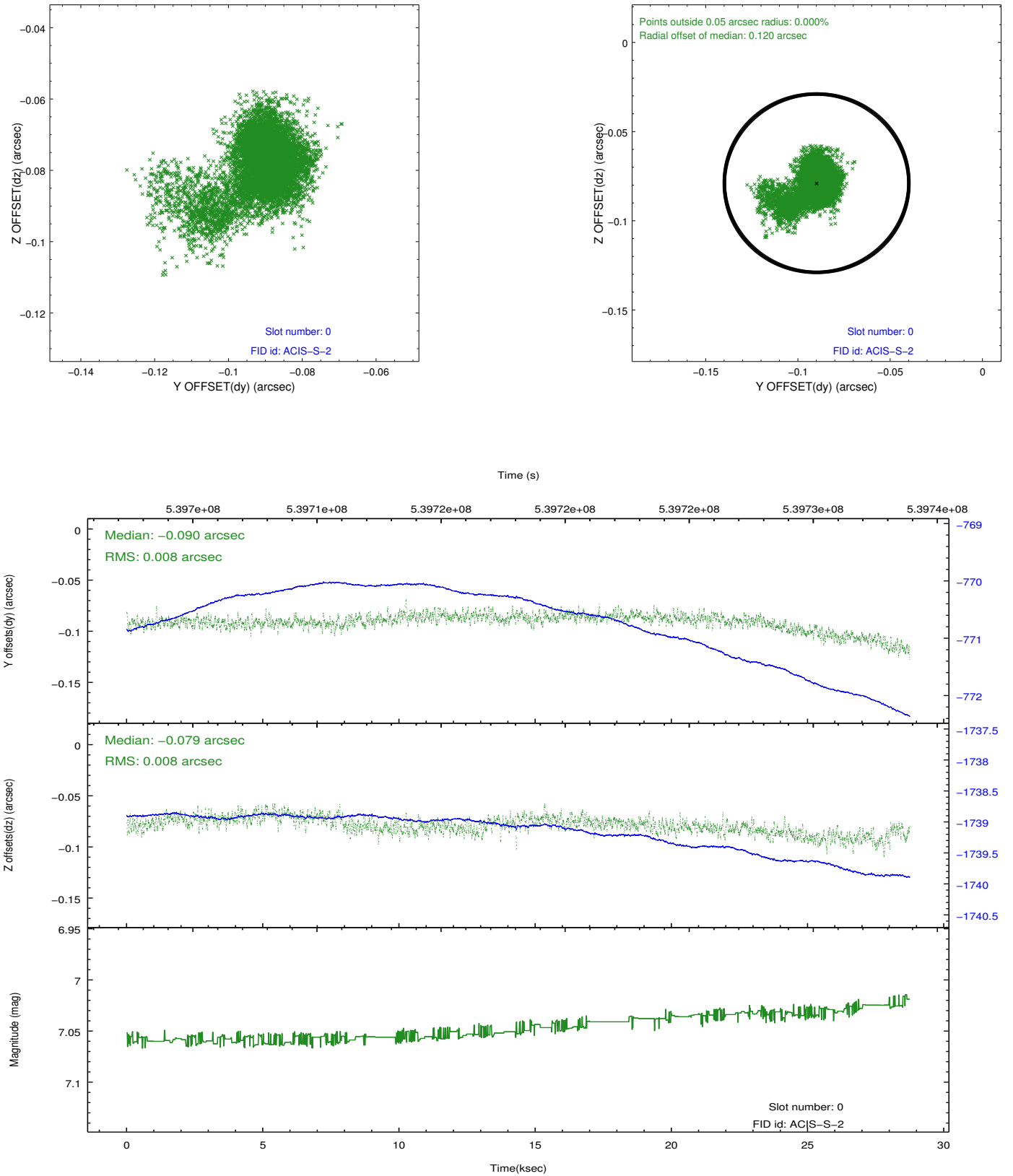


## 2.4.5 Slot 7

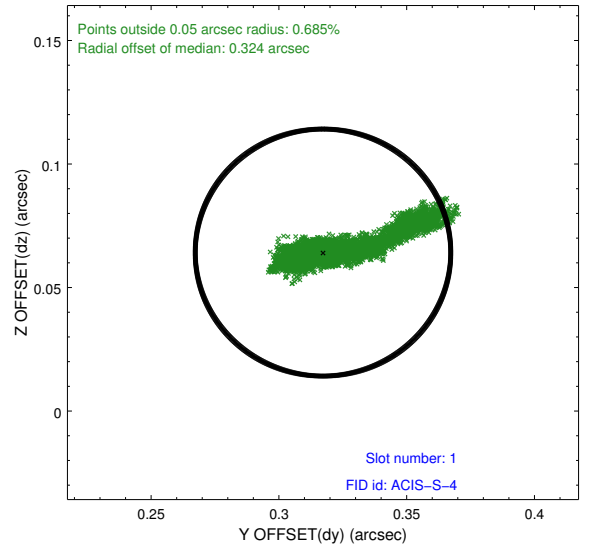
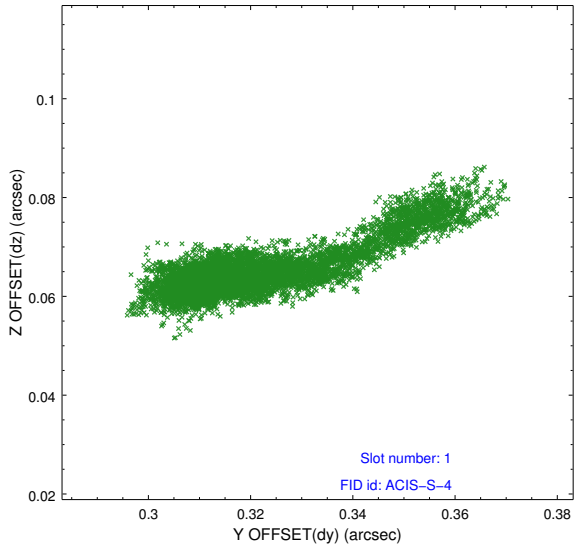


## 2.5 FID Slots

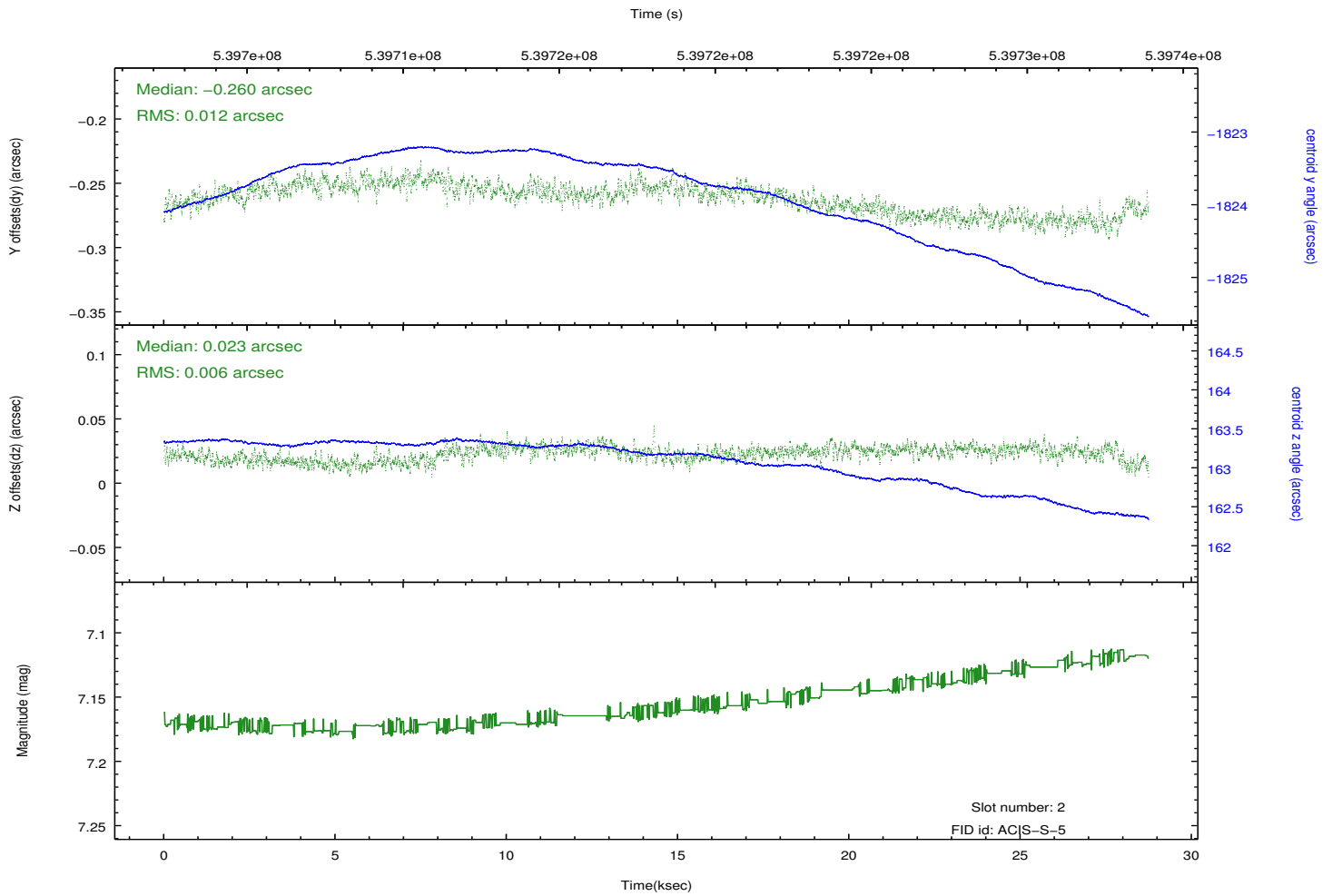
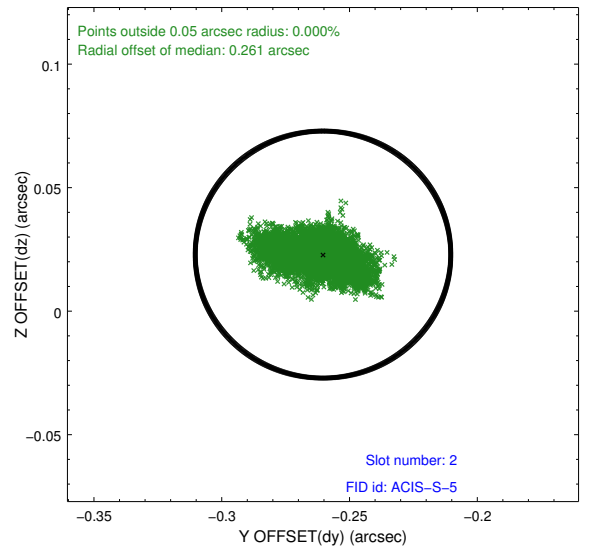
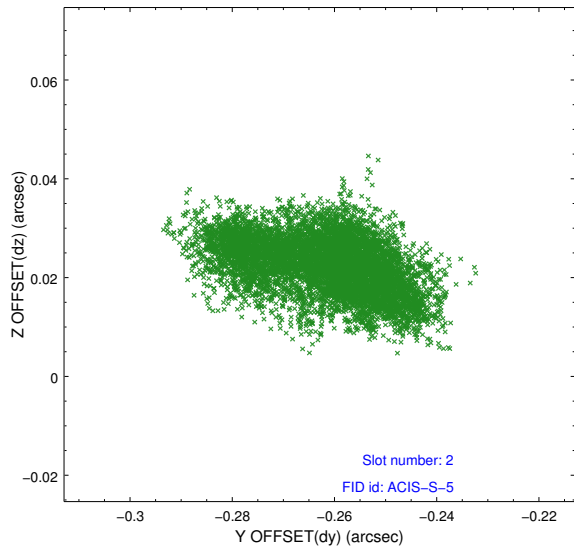
### 2.5.1 Slot 0



## 2.5.2 Slot 1



### 2.5.3 Slot 2



## A Summary

### A.1 Status

V&V Scientist	Beth Sundheim
V&V Date (YYYY-MM-DD)	2015.02.08
V&V Edition	1
V&V Disposition and Status	OK
V&V Charge Time	28.055000215888

### A.2 Comments