

V&V Reference Report

L2 ASCDS Version : 8.4.5

Observation 1808 - L2 Version 4
Chandra X-Ray Center

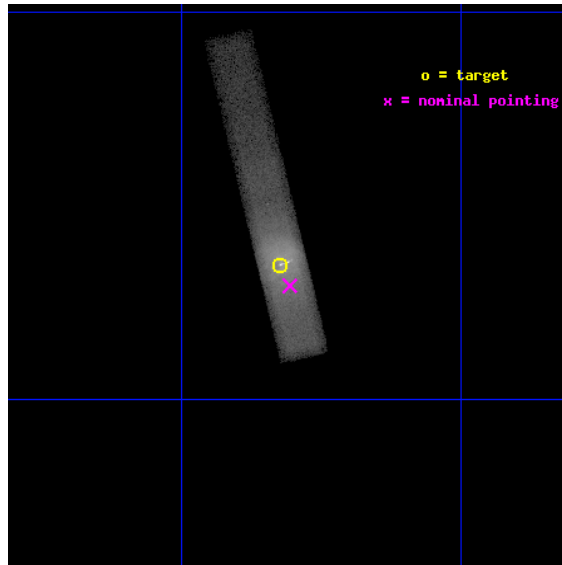
L2 Processing Date : Aug 30 2012

Contents

1	Front	2
2	OBI	3
2.1	OBI	3
2.1.1	Images	3
2.1.2	Bias	3
2.1.3	Parameters	4
2.1.4	Events	4
2.2	Compared Parameters	5
2.3	Aspect	6
2.4	Star Slots	9
2.4.1	Slot 3	9
2.4.2	Slot 4	10
2.4.3	Slot 5	11
2.4.4	Slot 6	12
2.4.5	Slot 7	13
2.5	FID Slots	14
2.5.1	Slot 0	14
2.5.2	Slot 1	15
2.5.3	Slot 2	16
A	Summary	17
A.1	Status	17
A.2	Comments	17

1 Front

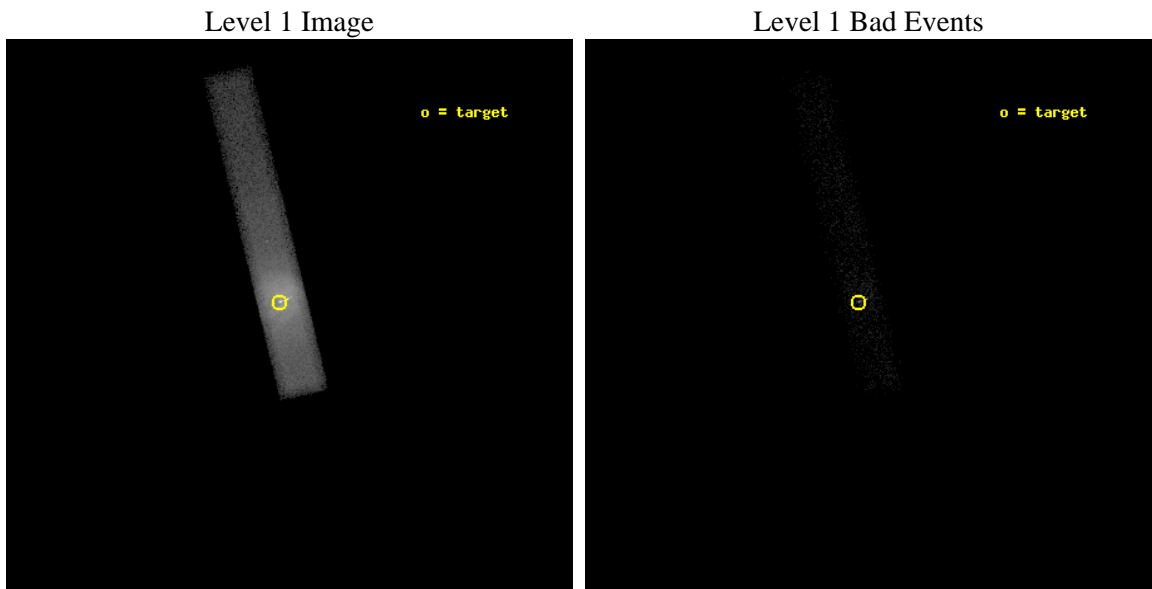
seq_num	700269	Sequence number
obs_id	1808	Observation id
title	STUDIES OF RADIO JETS AND THE NARROW LINE REGIONS	Proposal title
observer	Professor Andrew Wilson	Principal investigator
object	M87	Source name
dtcycle	0	
cycle	P	events from which exps? Prim/Second/Both
ra_targ	187.705833	Observer's specified target RA [deg]
dec_targ	12.391111	Observer's specified target Dec [deg]
ra_nom	187.70166355606	Nominal RA [deg]
dec_nom	12.382014590258	Nominal Dec [deg]
roll_nom	256.38308503746	Nominal Roll [deg]
revision	4	Processing version of data
ontime	14166.800211102	Sum of GTIs [s]
livetime	12848.540006441	Livetime [s]
ontime7	14166.800211102	Sum of GTIs [s]
l2events	166912	Number of level 2 events



2 OBI

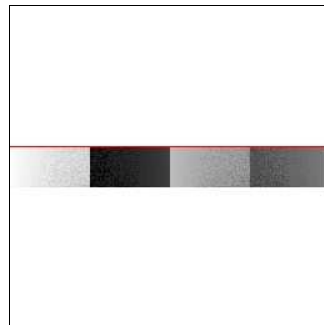
2.1 OBI

2.1.1 Images



2.1.2 Bias

Chip 7



2.1.3 Parameters

obi_num	0	Obi number	sched_exp_time	14000.000000	[s] Scheduled observation exposure time
ascdsver	8.4.5	Processing system revision	ontime	14166.800211102	Sum of GTIs [s]
caldbver	4.5.1.1	 	ontime7	14166.800211102	Sum of GTIs [s]
date	2012-08-30T21:26:53	Date and time of file creation	l1events	179513	Number of level 1 events
revision	4	Processing version of data			

2.1.4 Events

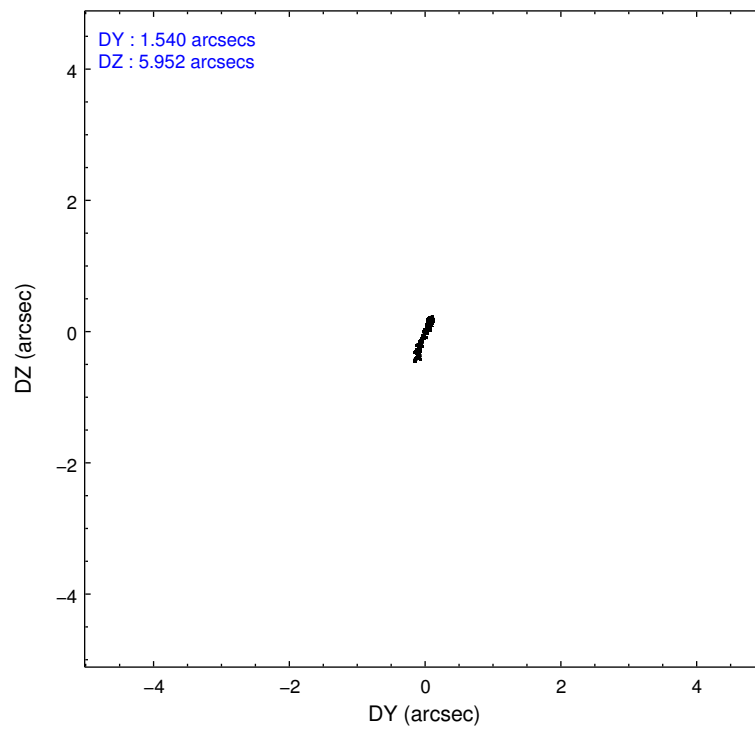
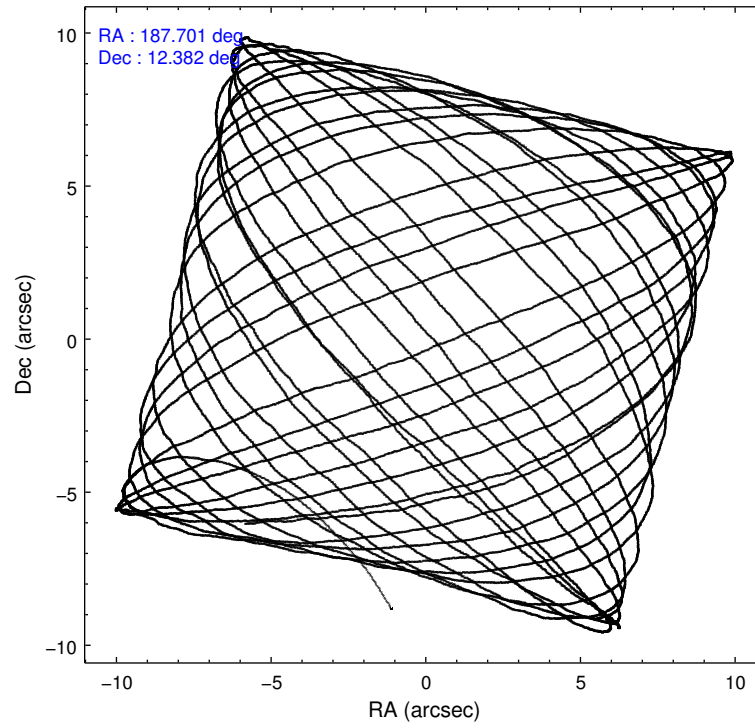
	ccd 7
level 1 events	179513
rejected events	10792
rejected %	6%

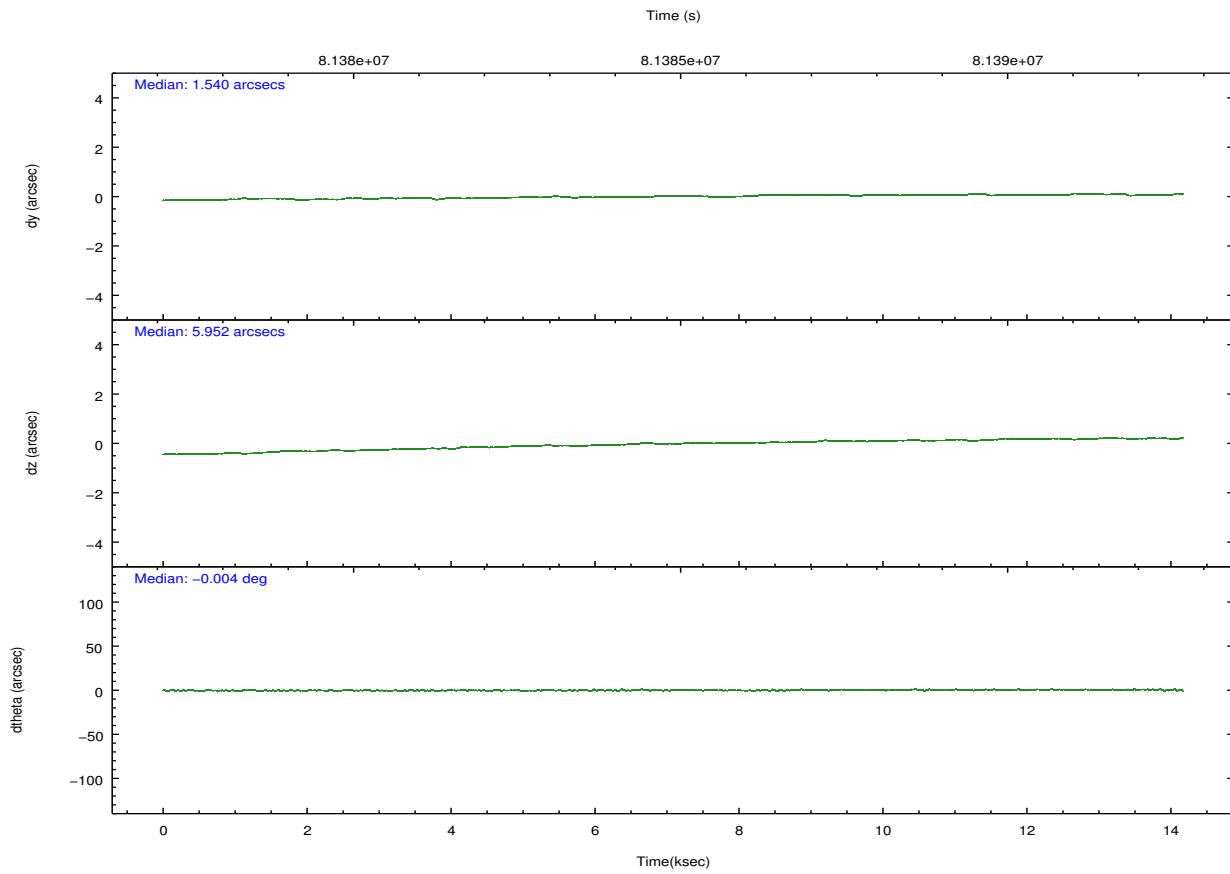
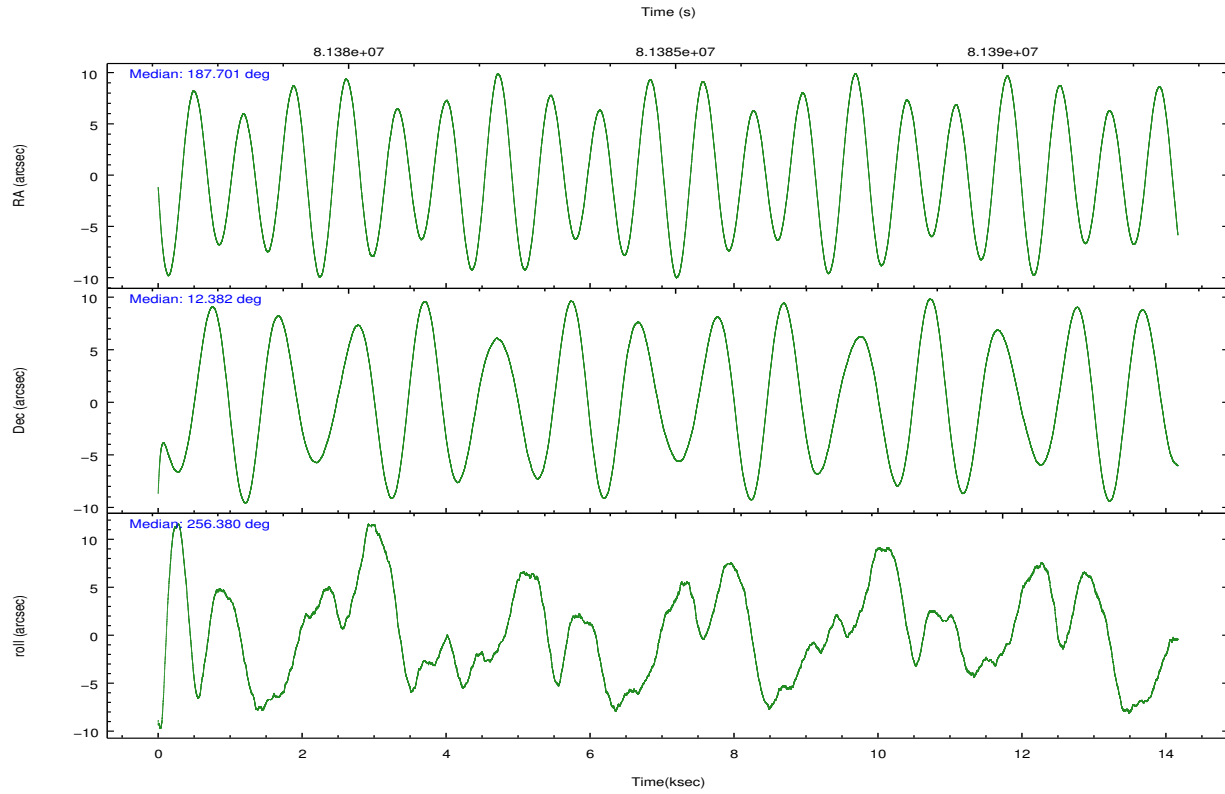
	ccd 7
grade 0 events	57701
	32%
grade 1 events	125
	0%
grade 2 events	43961
	24%
grade 3 events	20191
	11%
grade 4 events	19611
	10%
grade 5 events	2374
	1%
grade 6 events	29362
	16%
grade 7 events	6188
	3%

2.2 Compared Parameters

Parameter	Planned	Actual	Parameter	Planned	Actual
Instrument	ACIS	ACIS	Obspar format version number	7	7
Detector	ACIS-7	ACIS-7	Obspar file type	PREDICTED	ACTUAL
Grating	NONE	NONE	Obspar update status	NONE	UPDATED
Data mode	FAINT	FAINT	Number of optional ACIS chips dropped	0	0
Observation mode	POINTING	POINTING	On-chip summing requested	N	N
[deg] Pointing RA	187.693617	187.7016635560597	Subarray requested	CUSTOM	1/8
[deg] Pointing Dec	12.408276	12.38201459025797	Subarray start row	447	447
[deg] Pointing Roll	256.228189	256.383085037463	Subarray row count	128	128
[mm] SIM focus pos	-0.684267	-0.6828225247311905	Alternating exposures requested	N	N
[mm] SIM defocus	0	0.001444936568705701	[s] Primary exposure time	0.000000	0.4
[mm] SIM translation stage pos	-190.132523	-190.1400660498719			
[mm] SIM translation stage offset	0	0.00754346686406393			
[s] Observation start time (MET)	81377967.184000	81376924.747752			
Observation start date	2000-07-30T20:58:23	2000-07-30T20:42:04			
[s] Observation end time (MET)	81391967.184000	81392470.92332999			
Observation end date	2000-07-31T00:51:43	2000-07-31T01:01:10			
Read mode	TIMED	TIMED			

2.3 Aspect



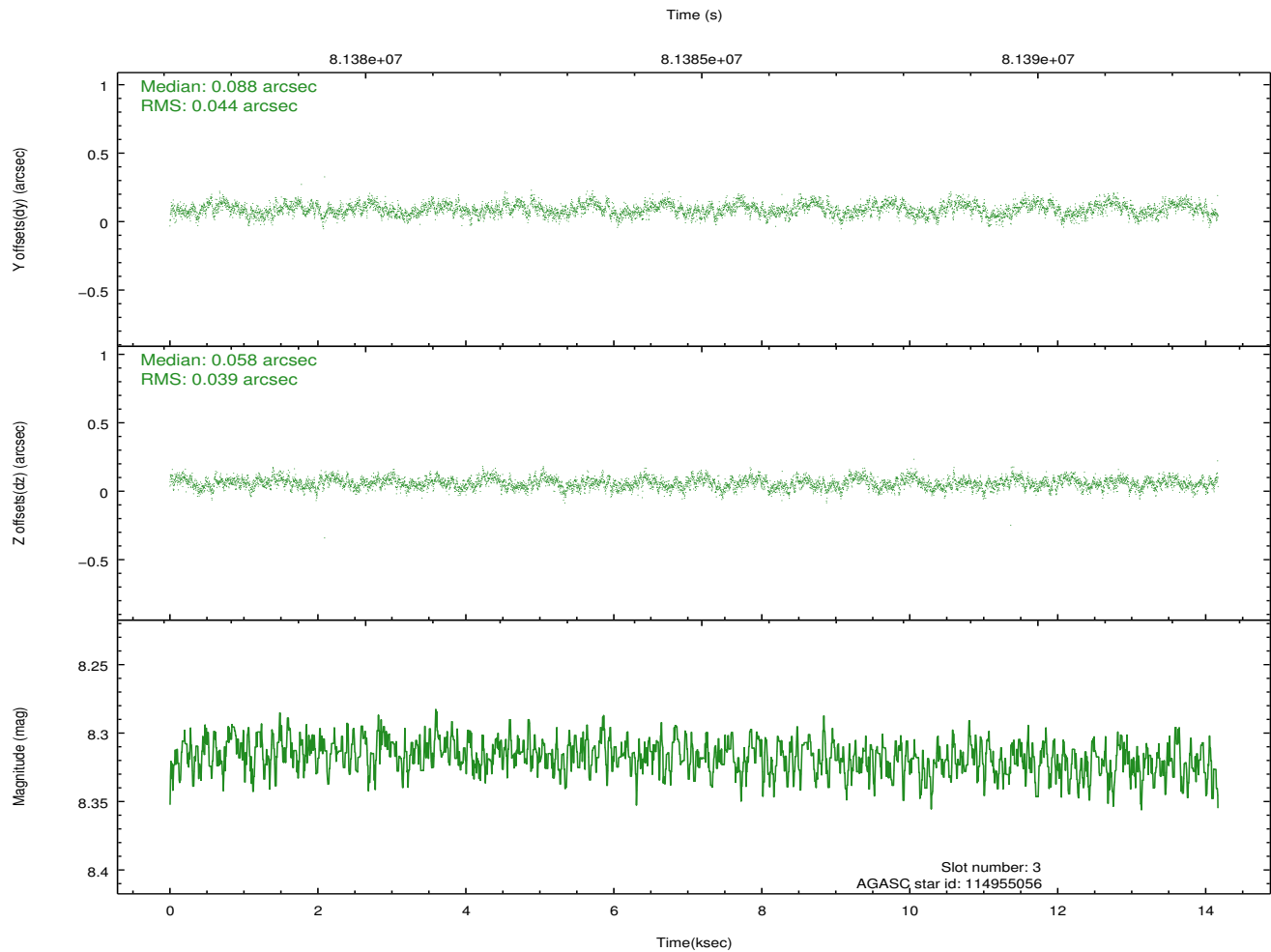
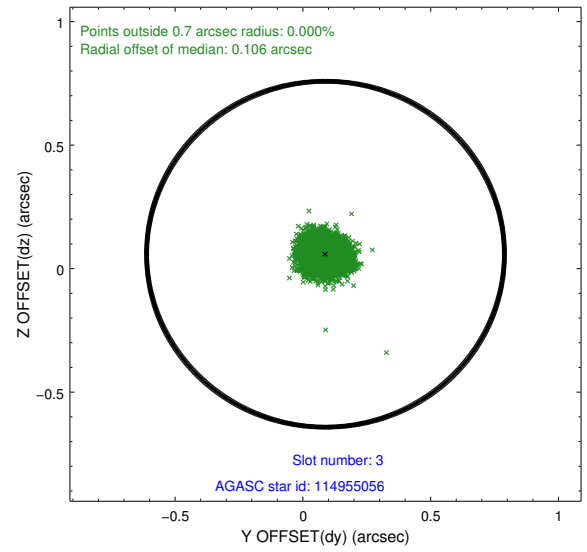
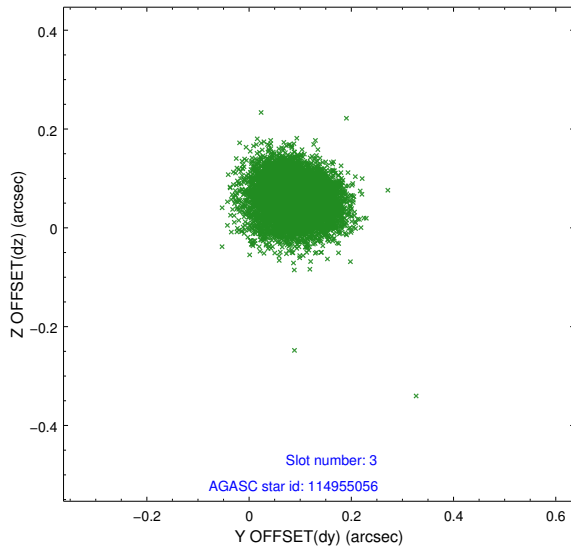


Slot Statistics

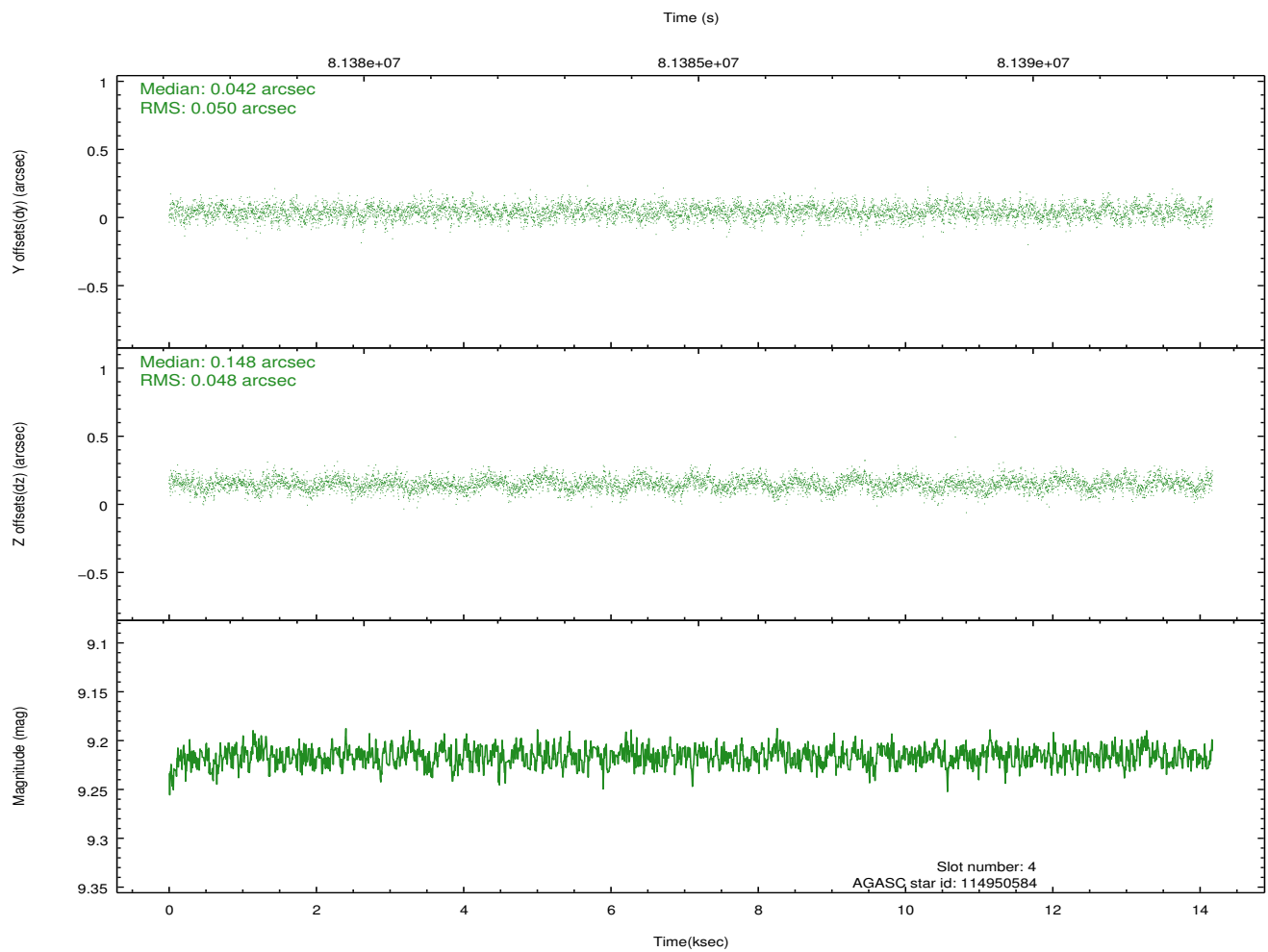
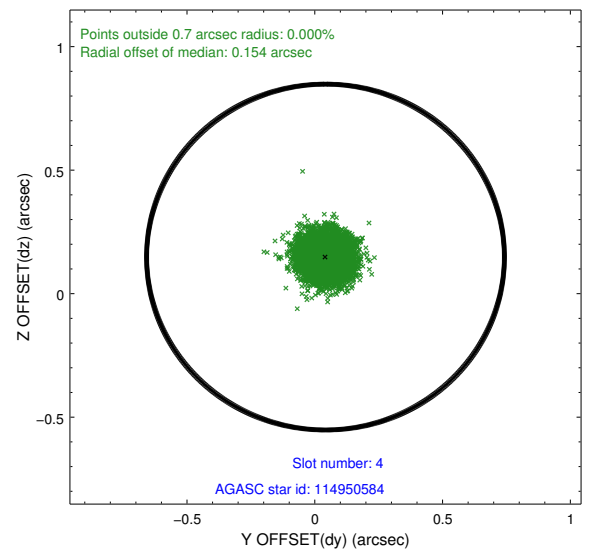
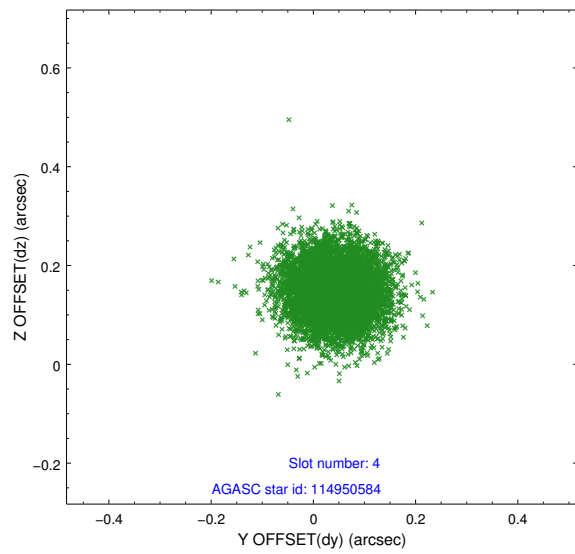
slot	status	id	mag	n_pts	med_dy	med_dz	dr1	dr2	ra	dec	mean_y	mean_z
0	FID	ACIS-S-2	7.11	3456	-0.037	0.008	0.007	0.011	0.000000	0.000000	-754.16	-1727.03
1	FID	ACIS-S-4	7.21	3456	-0.022	0.016	0.007	0.014	0.000000	0.000000	2158.97	181.14
2	FID	ACIS-S-5	7.23	3455	0.027	-0.015	0.007	0.013	0.000000	0.000000	-1806.53	175.13
3	GUIDE	114955056	8.32	6910	0.088	0.058	0.063	0.099	187.914001	12.127854	795.01	994.91
4	GUIDE	114950584	9.22	6905	0.042	0.148	0.075	0.120	187.487323	11.827248	2203.95	-206.57
5	GUIDE	114952424	9.33	6910	0.164	0.025	0.089	0.145	187.477948	11.953762	1769.70	-347.11
6	GUIDE	115348424	9.51	6900	-0.262	-0.159	0.104	0.167	187.199498	13.087929	-1966.04	-2264.90
7	GUIDE	114952792	9.48	6906	-0.031	-0.059	0.138	0.227	187.070263	12.344747	740.80	-2074.56

2.4 Star Slots

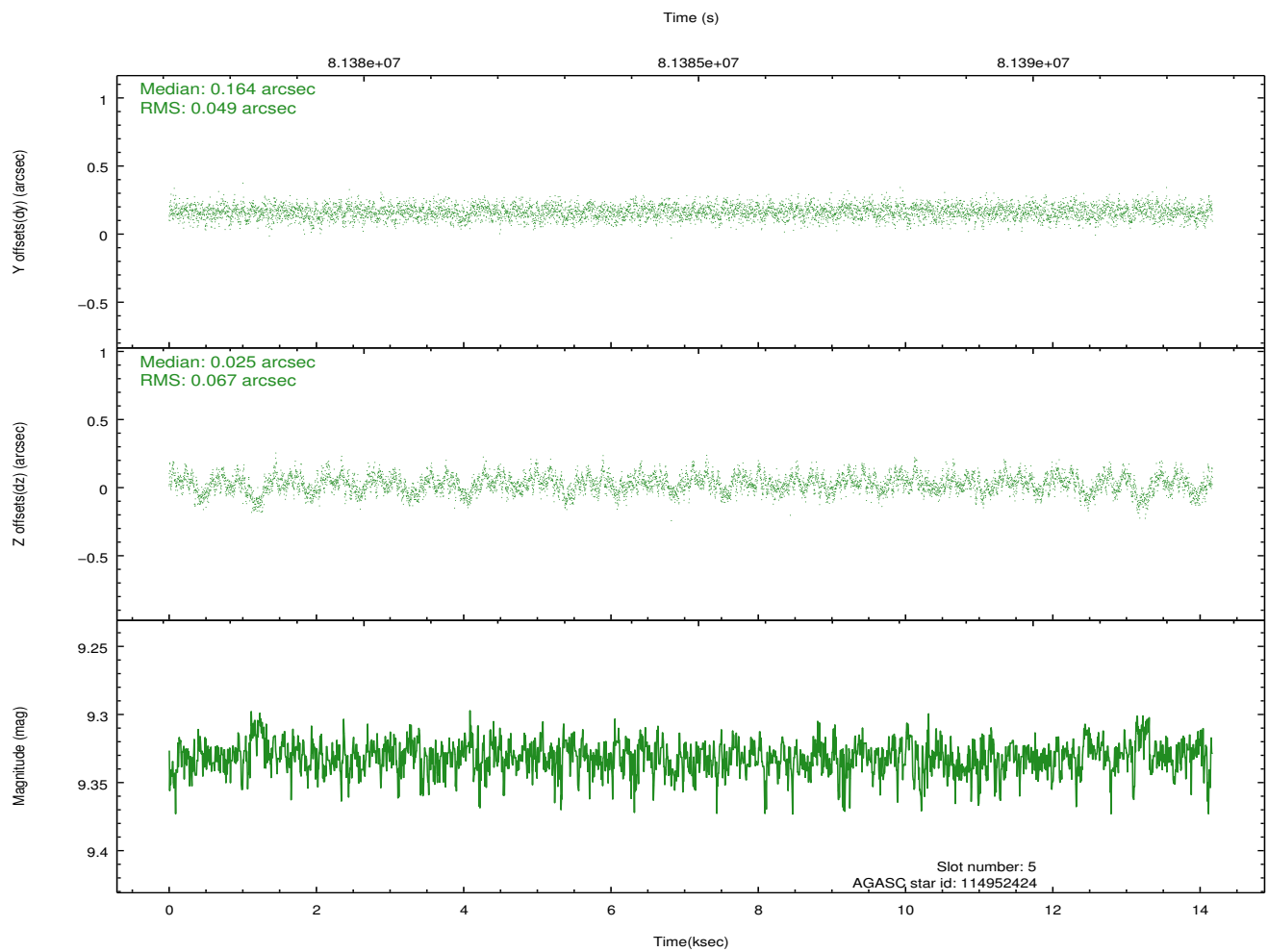
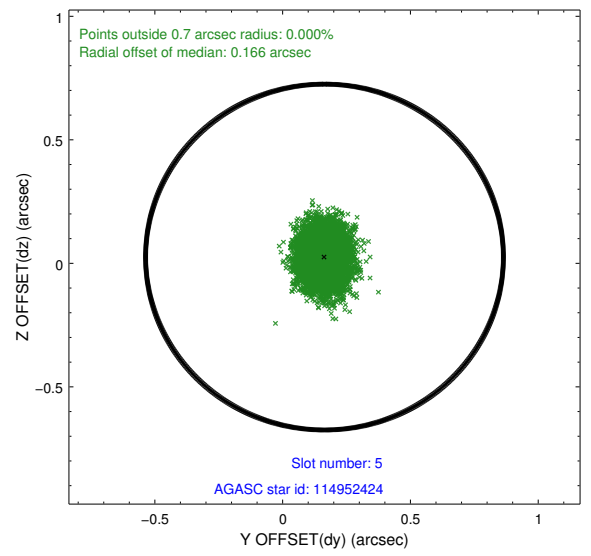
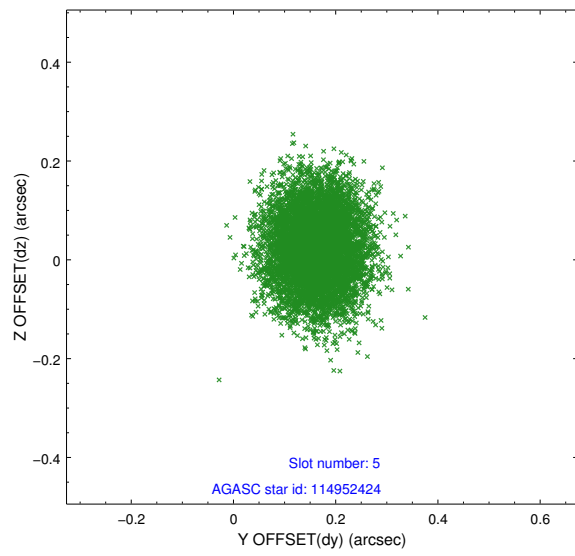
2.4.1 Slot 3



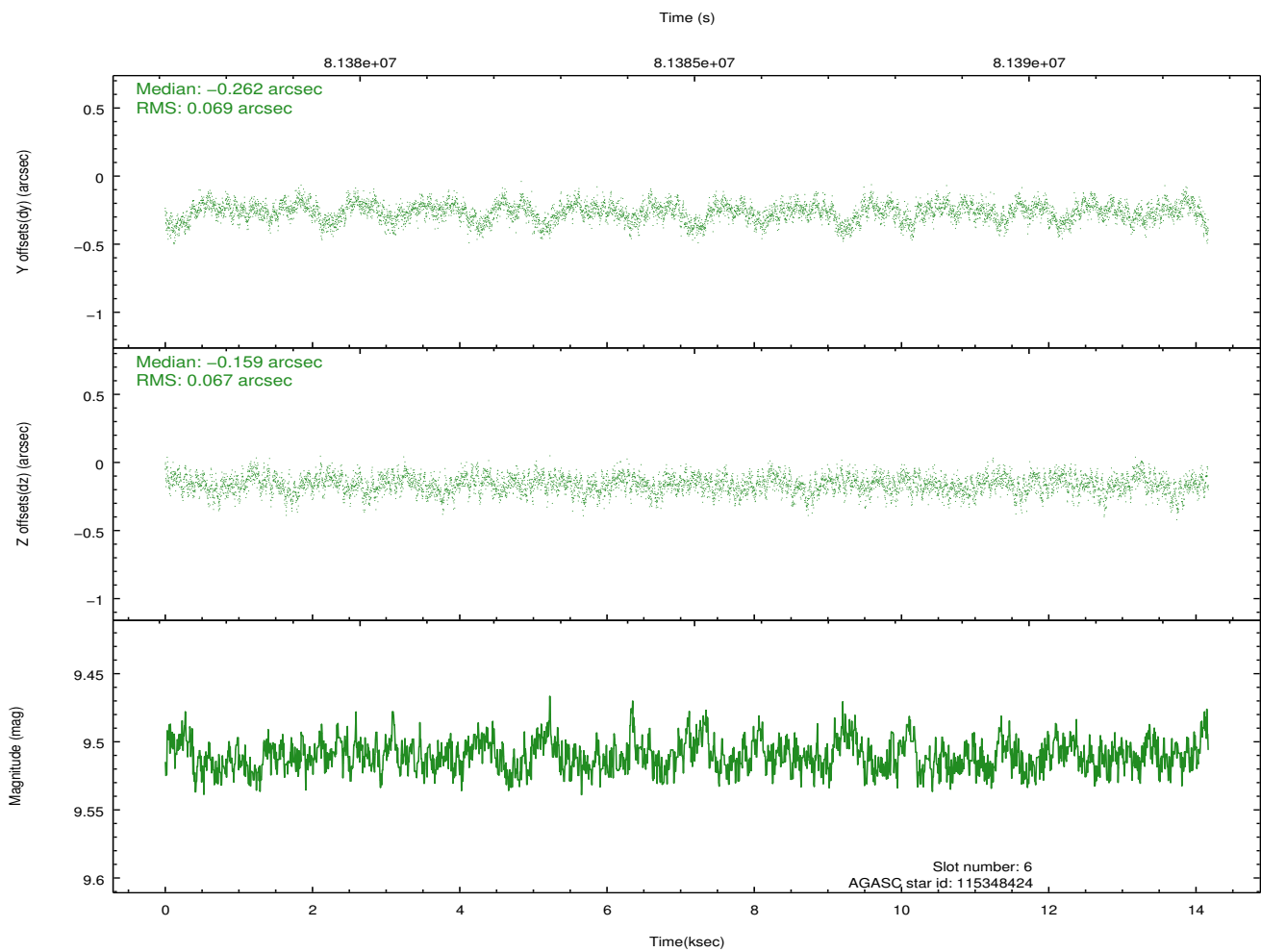
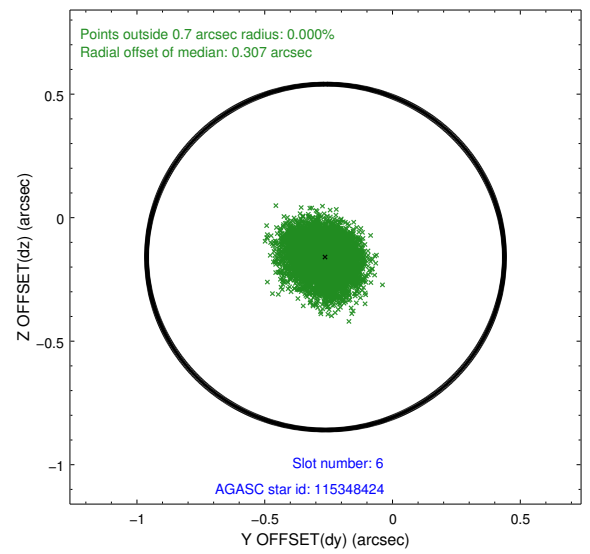
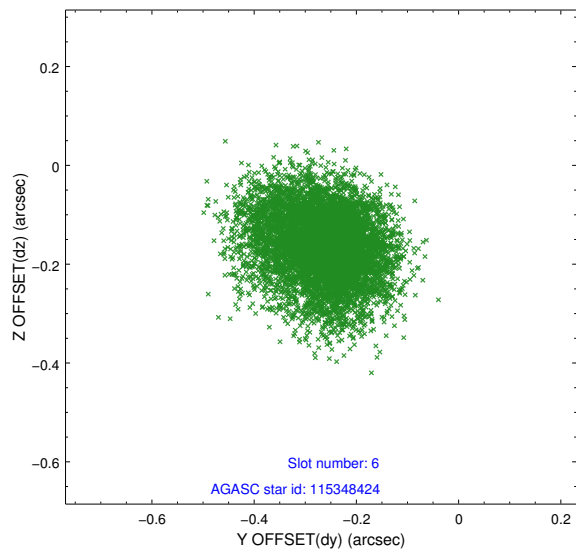
2.4.2 Slot 4



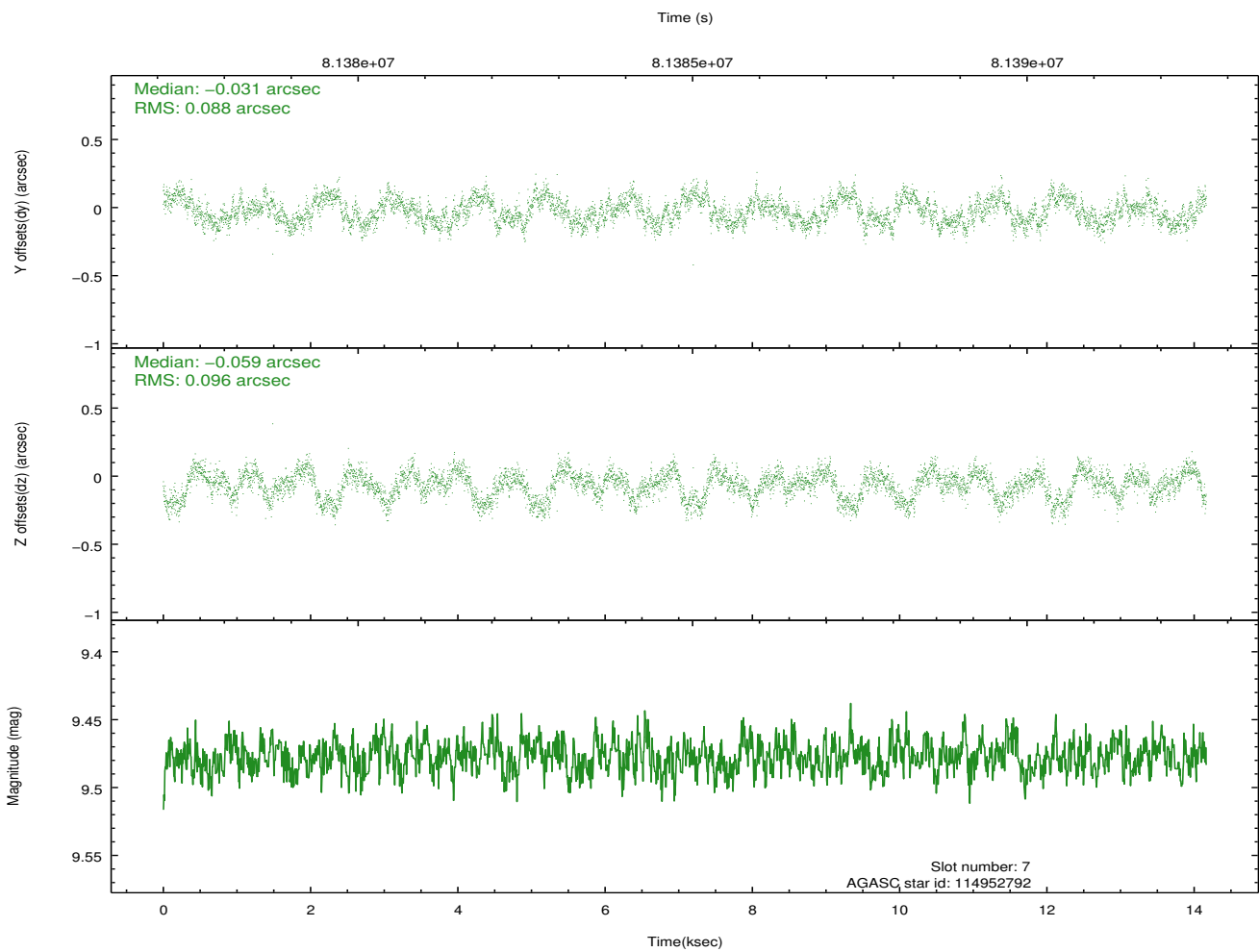
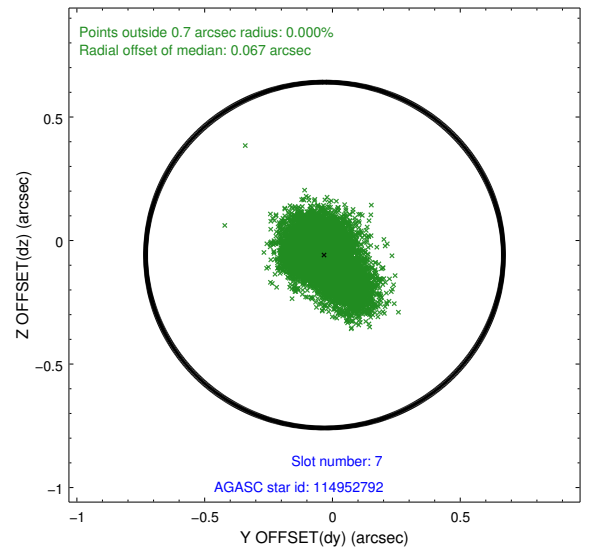
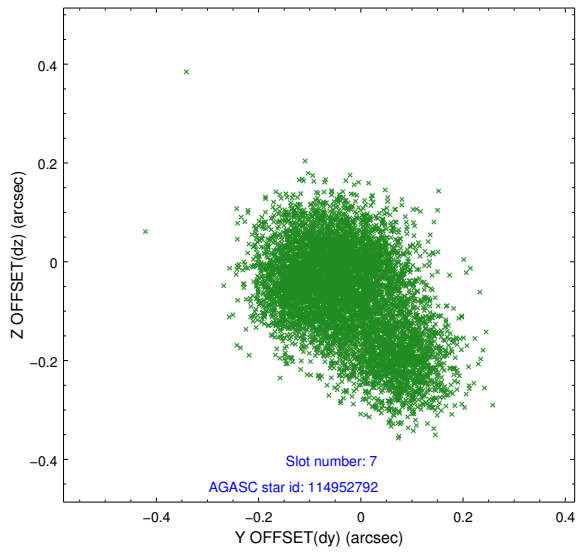
2.4.3 Slot 5



2.4.4 Slot 6

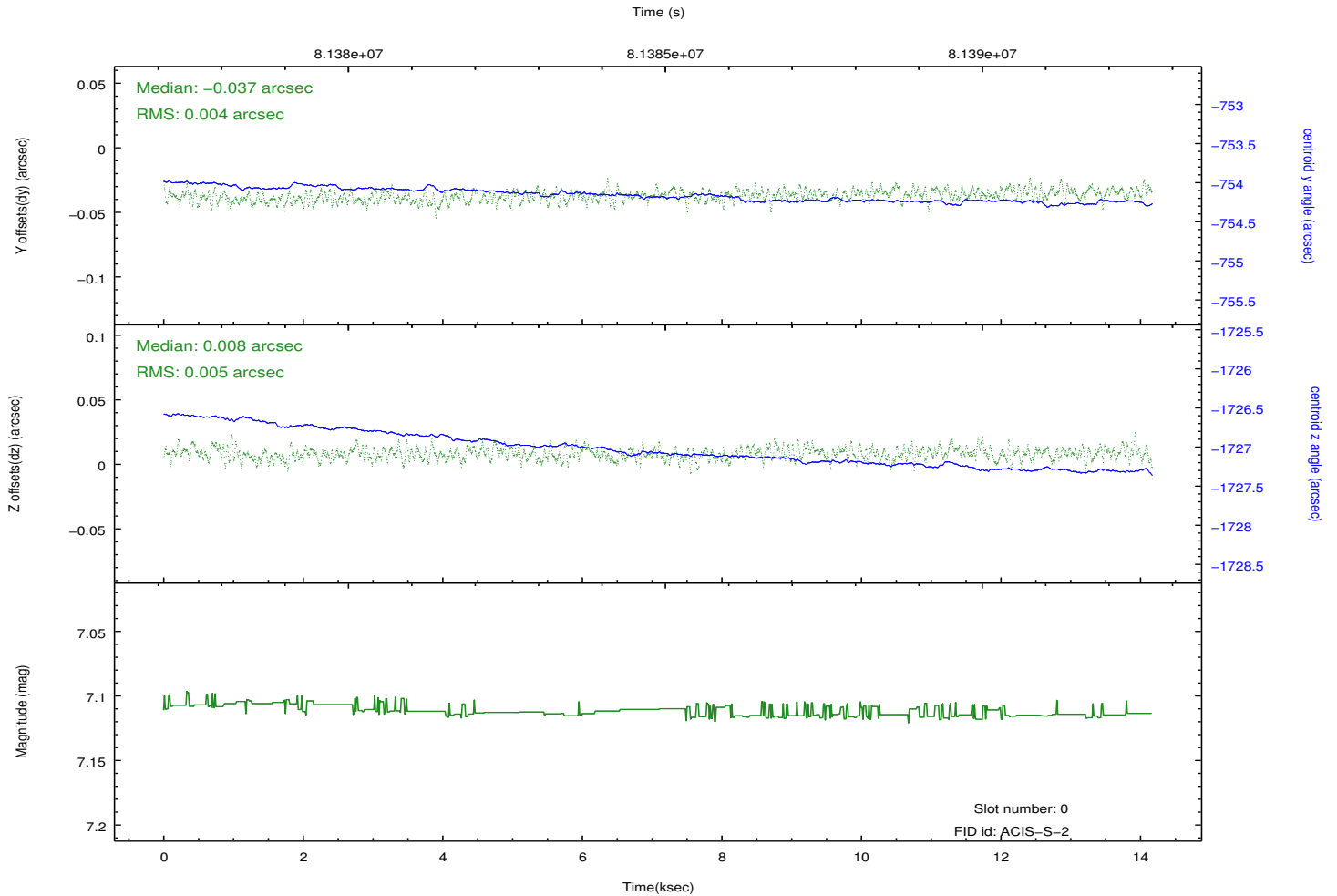
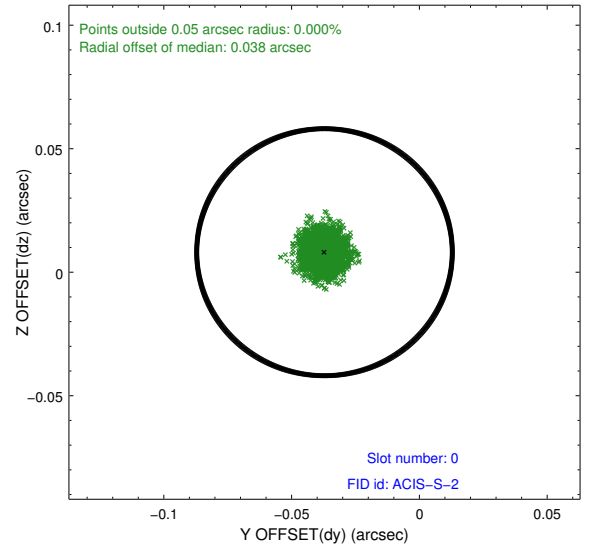
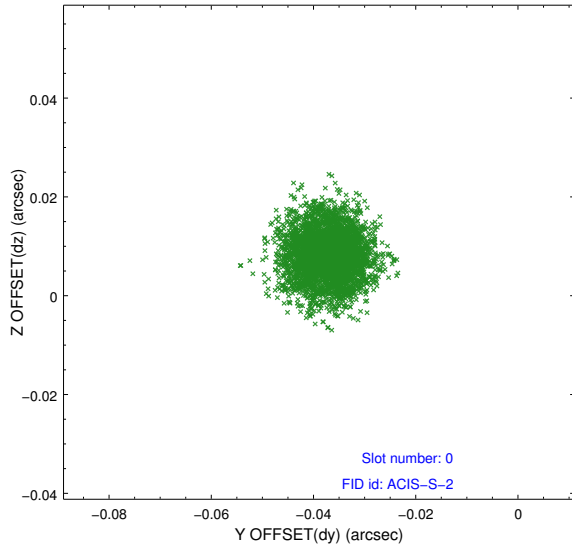


2.4.5 Slot 7

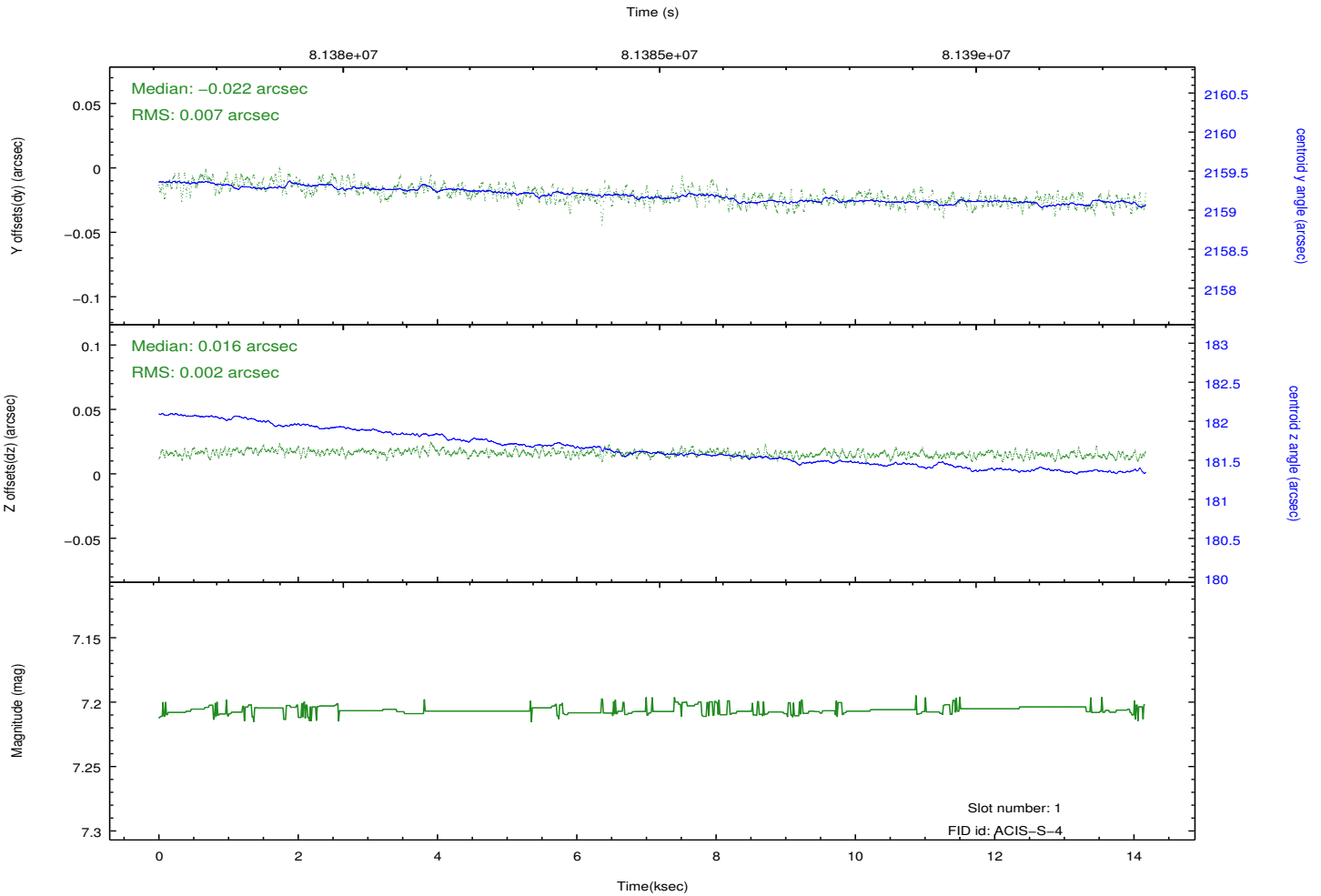
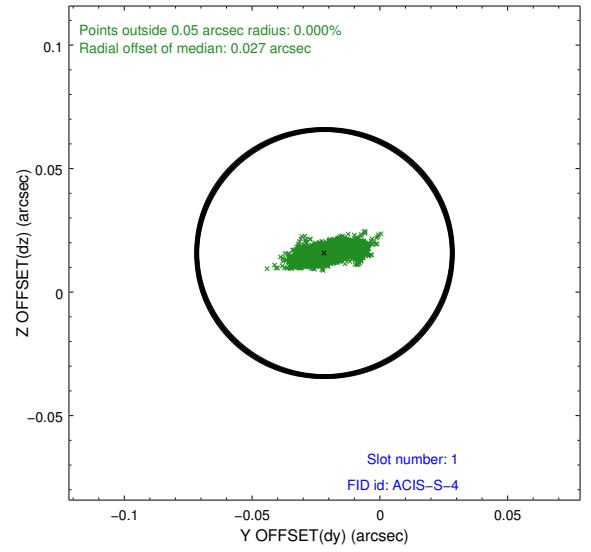
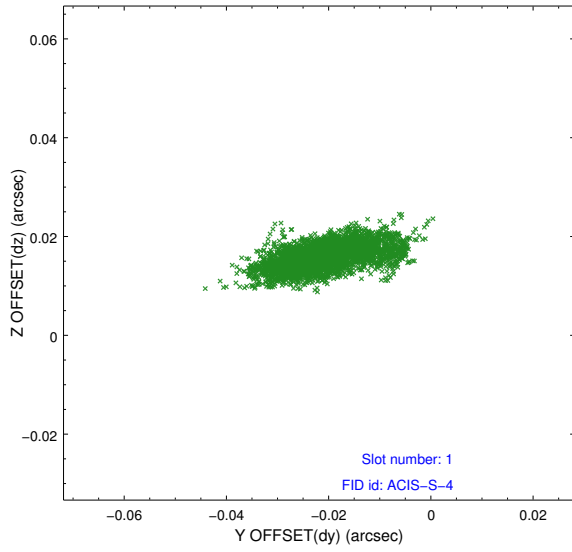


2.5 FID Slots

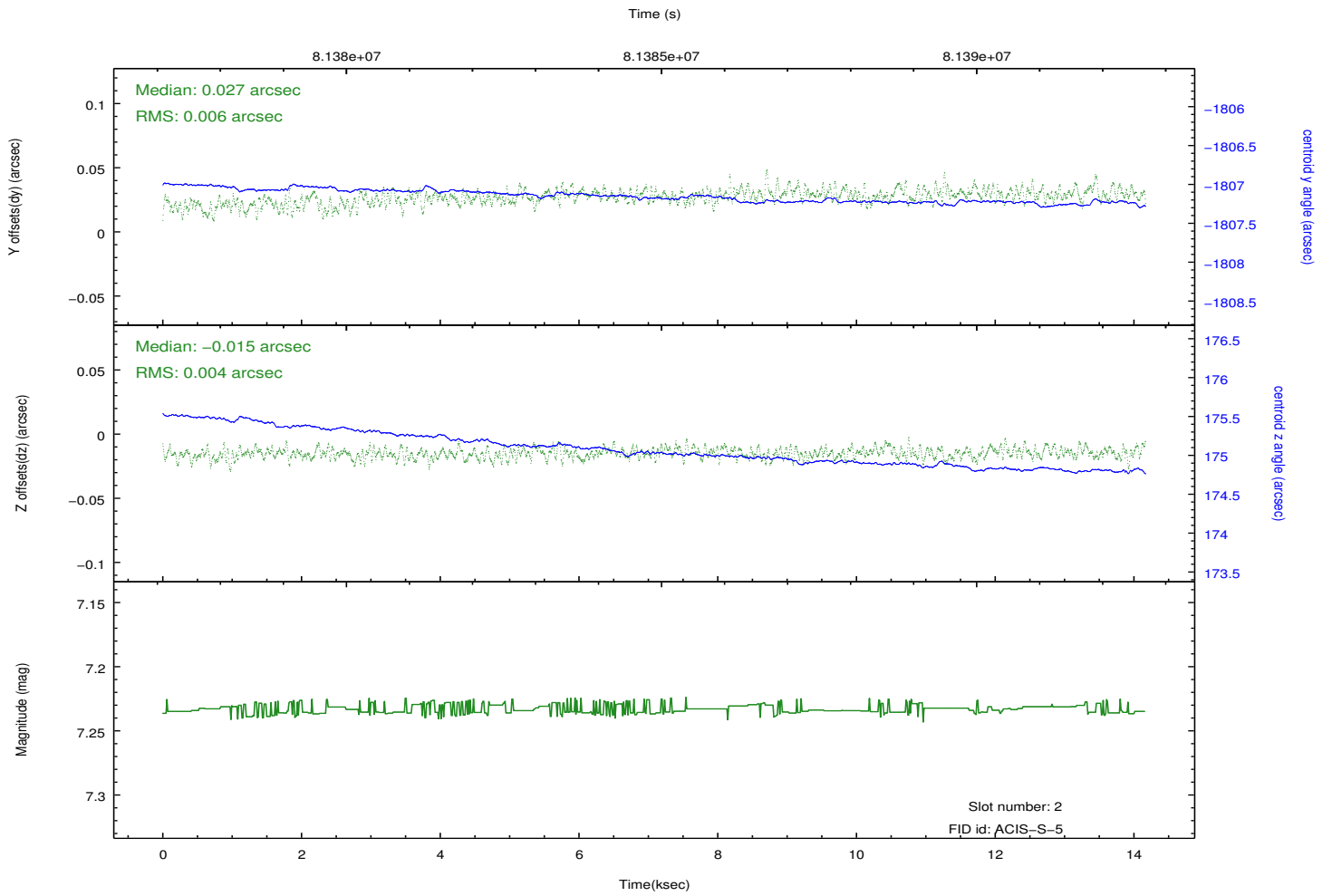
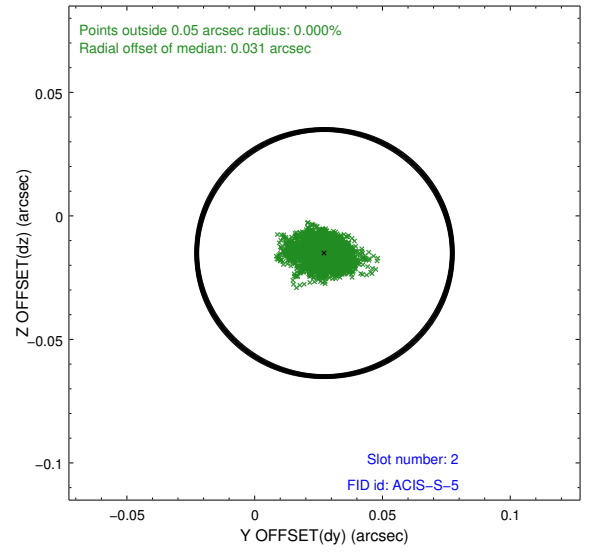
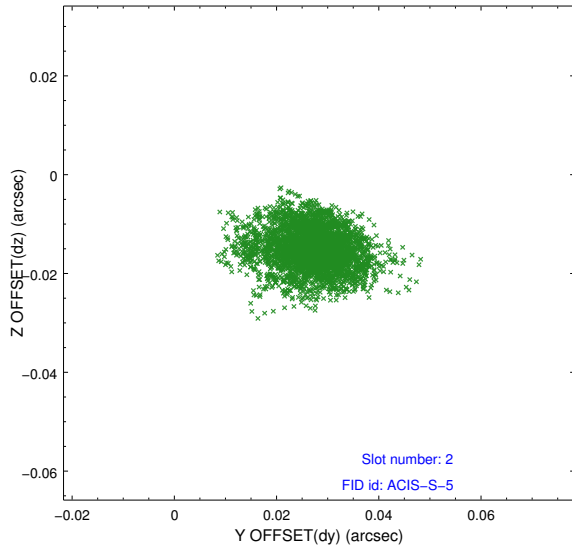
2.5.1 Slot 0



2.5.2 Slot 1



2.5.3 Slot 2



A Summary

A.1 Status

V&V Scientist	Jen Lauer
V&V Date (YYYY-MM-DD)	2012.09.05
V&V Edition	1
V&V Disposition and Status	OK
V&V Charge Time	14.166

A.2 Comments