

V&V Reference Report

L2 ASCDS Version : 8.4.5

Observation 1848 - L2 Version 6
Chandra X-Ray Center

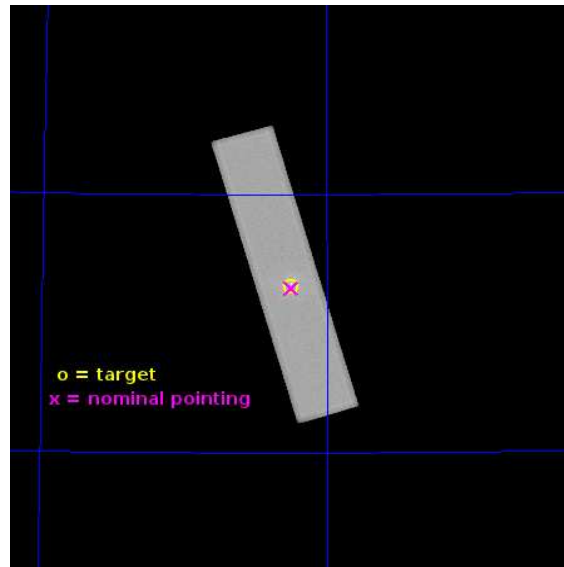
L2 Processing Date : Jun 28 2013

Contents

1	Front	2
2	OBI	3
2.1	OBI	3
2.1.1	Images	3
2.1.2	Parameters	4
2.1.3	Events	4
2.2	Compared Parameters	5
2.3	Aspect	6
2.4	Star Slots	9
2.4.1	Slot 3	9
2.4.2	Slot 4	10
2.4.3	Slot 5	11
2.4.4	Slot 6	12
2.4.5	Slot 7	13
2.5	FID Slots	14
2.5.1	Slot 0	14
2.5.2	Slot 1	15
2.5.3	Slot 2	16
A	Summary	17
A.1	Status	17
A.2	Comments	17

1 Front

seq_num	500120	Sequence number
obs_id	1848	Observation id
title	SEARCH FOR PULSARS	Proposal title
observer	Dr. Stephen Murray	Principal investigator
object	3C 58	Source name
ra_targ	31.408333	Observer's specified target RA [deg]
dec_targ	64.823333	Observer's specified target Dec [deg]
ra_nom	31.404624914519	Nominal RA [deg]
dec_nom	64.818735236722	Nominal Dec [deg]
roll_nom	253.39791973511	Nominal Roll [deg]
revision	6	Processing version of data
ontime	33541.332533419	[s]
livetime	33450.608445868	Ontime multiplied by DTCOR
l2events	831986	Number of level 2 events

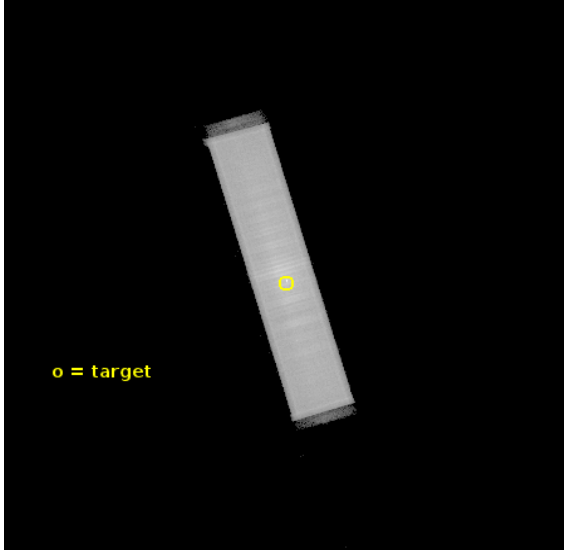


2 OBI

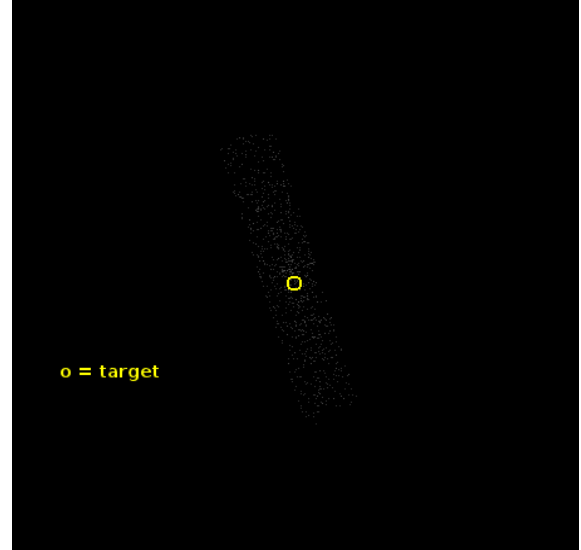
2.1 OBI

2.1.1 Images

Level 1 Image



Level 1 Bad Events



2.1.2 Parameters

obi_num	0	Obi number	sched_exp_time	33625.000000	[s] Scheduled observation exposure time
ascdsver	10	Processing system revision	ontime	33541.332533419	[s]
caldbver	4.5.7	 	l1events	1329330	Number of level 1 events
date	2013-06-29T00:11:06	Date and time of file creation			
revision	6	Processing version of data			

2.1.3 Events

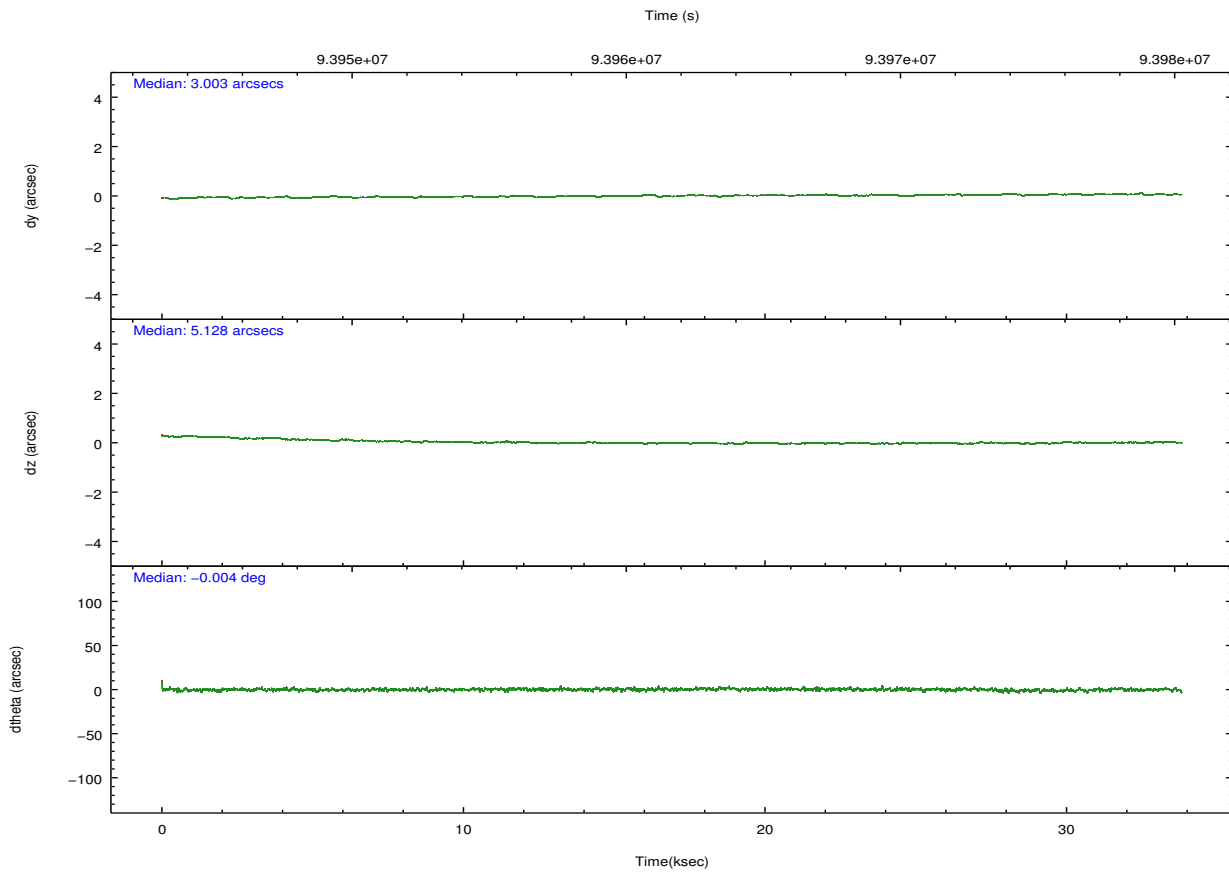
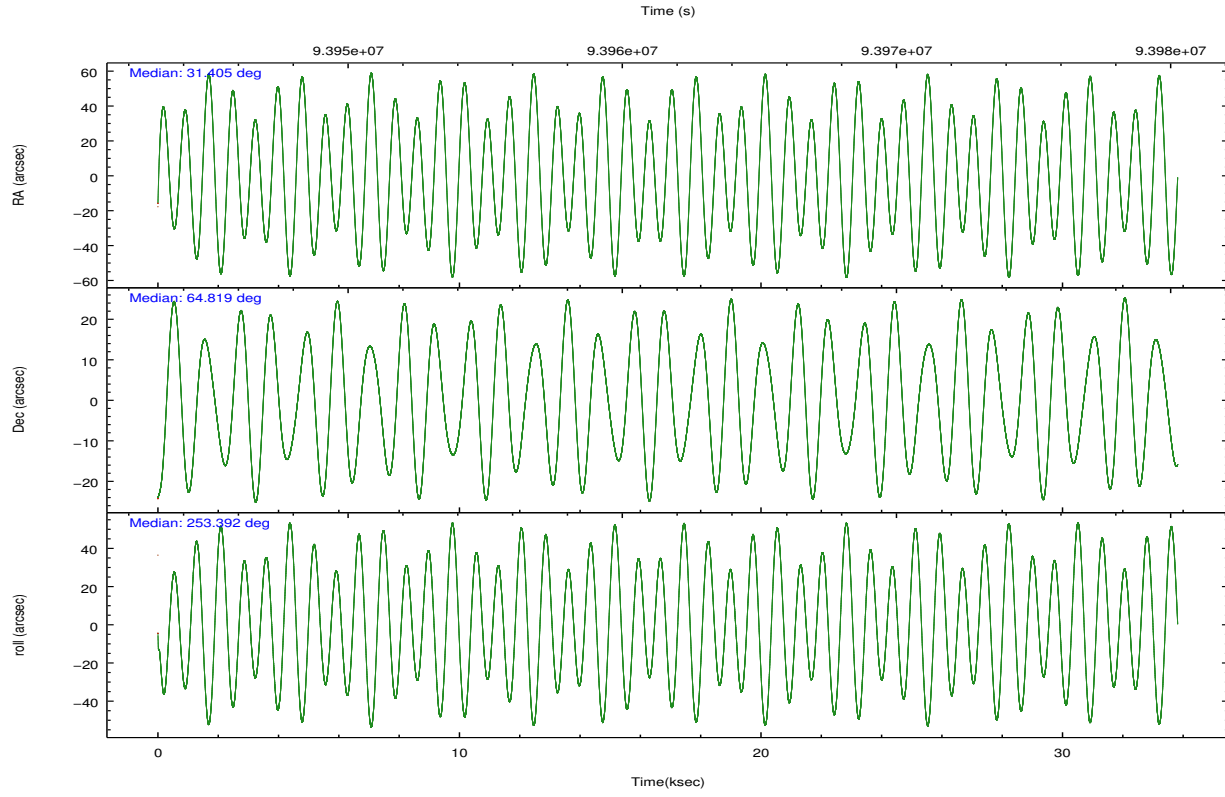
Level 1 Events

	segment 1	segment 2	segment 3
level 1 events	2046	1327272	12
rejected events	11	4881	9
rejected %	0%	0%	75%

2.2 Compared Parameters

Parameter	Planned	Actual	Parameter	Planned	Actual
Instrument	HRC	HRC	Obspar format version number	7	7
Detector	HRC-S	HRC-S	Obspar file type	PREDICTED	ACTUAL
Grating	NONE	NONE	Obspar update status	NONE	UPDATED
Data mode	OBSERVING	OBSERVING			
Observation mode	POINTING	POINTING			
[deg] Pointing RA	31.386071	31.40462491451938			
[deg] Pointing Dec	64.846344	64.81873523672218			
[deg] Pointing Roll	253.347384	253.39791973511			
[mm] SIM focus pos	-1.429586	-1.428180813131781			
[mm] SIM defocus	0.1037507710433287	0.1051558262725154			
[mm] SIM translation stage pos	250.455976	250.466033080201			
[mm] SIM translation stage offset	0	-0.01005468664627074			
[s] Observation start time (MET)	93944943.184000	93944150.410044			
Observation start date	2000-12-23T07:47:59	2000-12-23T07:35:50			
[s] Observation end time (MET)	93978568.184000	93979681.01140299			
Observation end date	2000-12-23T17:08:24	2000-12-23T17:28:01			

2.3 Aspect



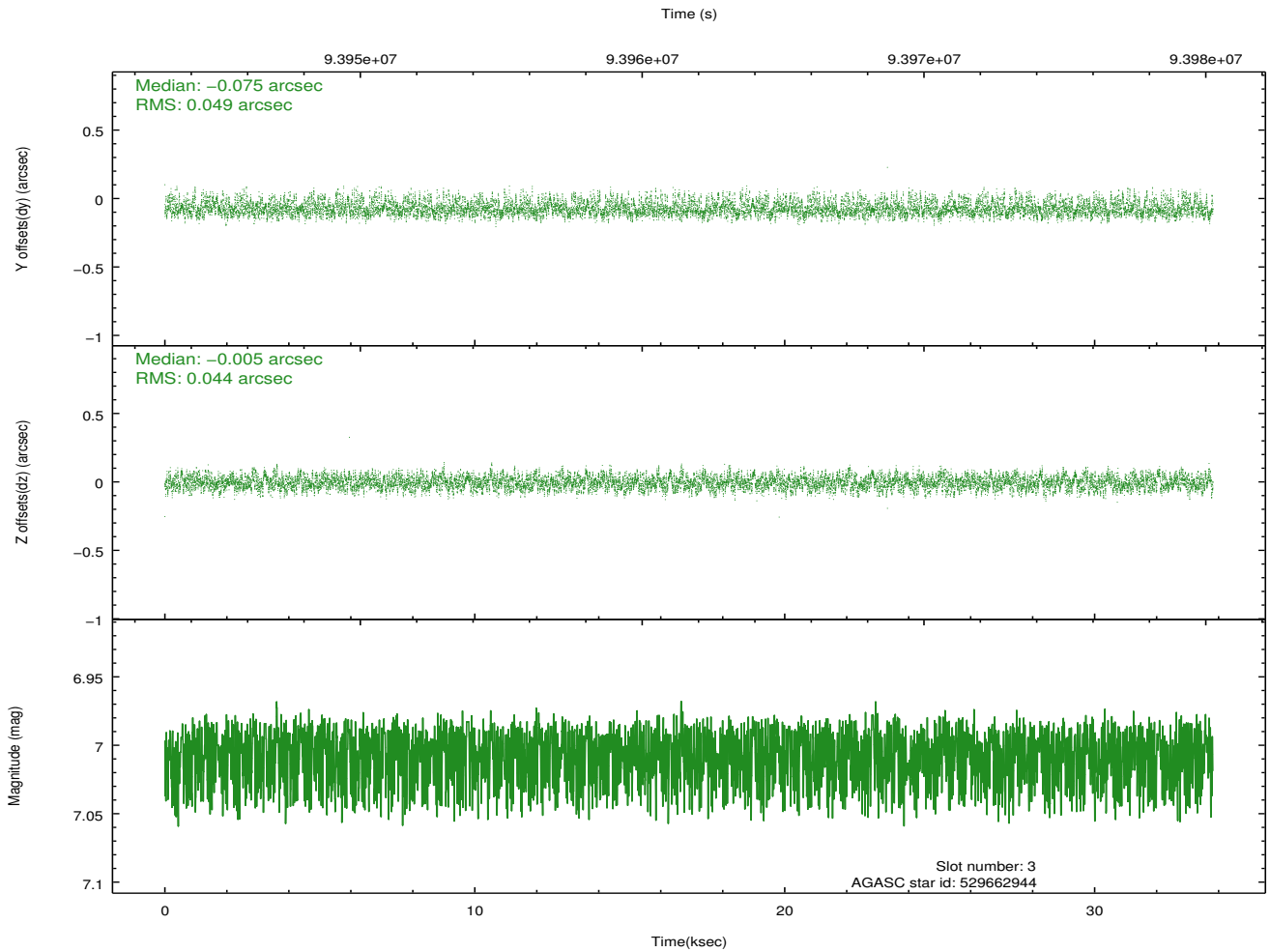
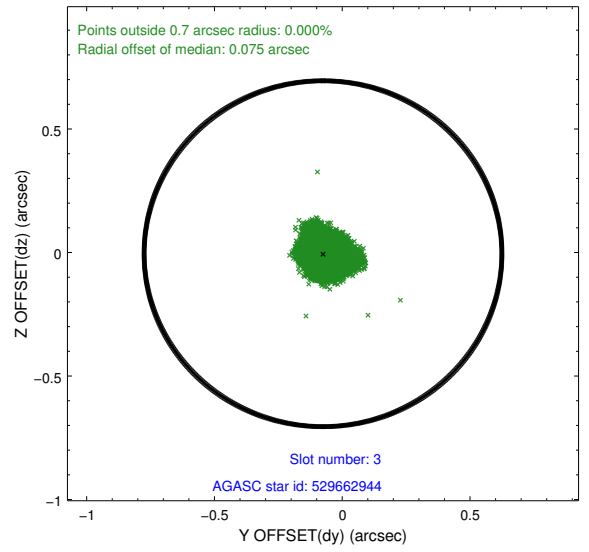
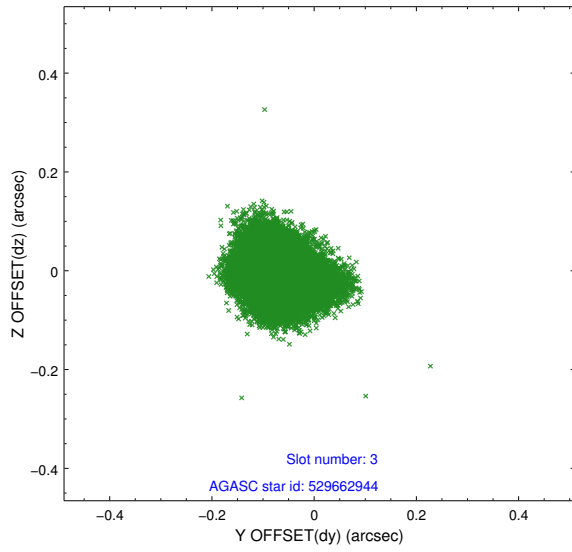
Slot Statistics

slot	status	id	mag	n_pts	med_dy	med_dz	dr1	dr2	ra	dec	mean_y	mean_z
0	FID	HRC-S-1	6.98	8249	0.116	-0.162	0.009	0.015	0.000000	0.000000	-1157.06	-453.71
1	FID	HRC-S-3	7.00	8249	0.143	-0.041	0.009	0.014	0.000000	0.000000	-1159.91	575.88
2	FID	HRC-S-4	6.93	8248	0.129	-0.094	0.006	0.011	0.000000	0.000000	1241.06	578.55
3	GUIDE	529662944	7.01	16493	-0.075	-0.005	0.071	0.109	31.166392	65.103499	-791.87	-585.53
4	GUIDE	529675904	7.34	16497	-0.049	-0.074	0.056	0.087	31.256077	64.385587	1647.02	280.42
5	GUIDE	529665216	7.76	16497	-0.093	0.049	0.060	0.099	32.189318	65.037431	-1016.08	968.70
6	GUIDE	529670336	8.53	16492	0.083	0.023	0.056	0.091	31.583988	64.608918	731.06	536.60
7	GUIDE	529673088	8.83	16493	0.126	0.007	0.066	0.110	30.560791	64.638256	1074.91	-1007.80

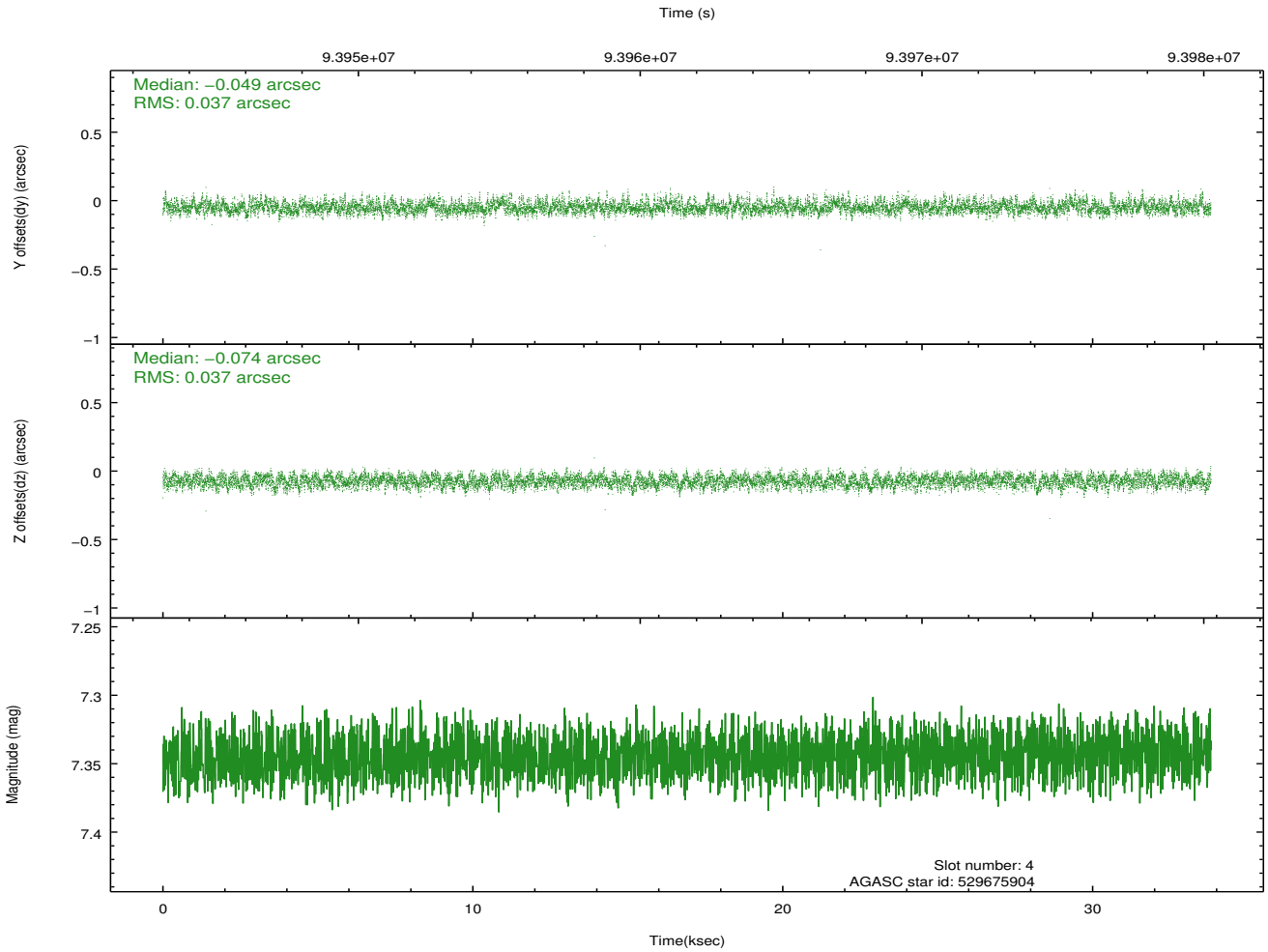
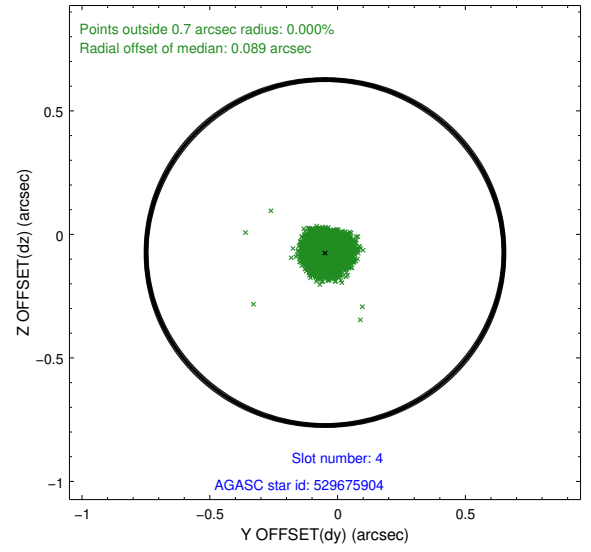
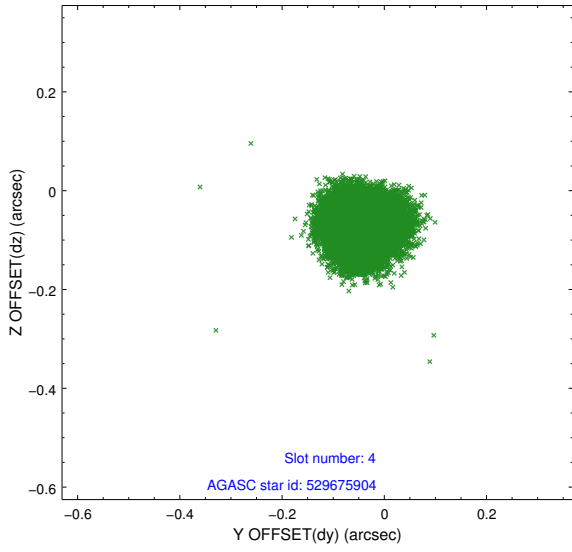
∞

2.4 Star Slots

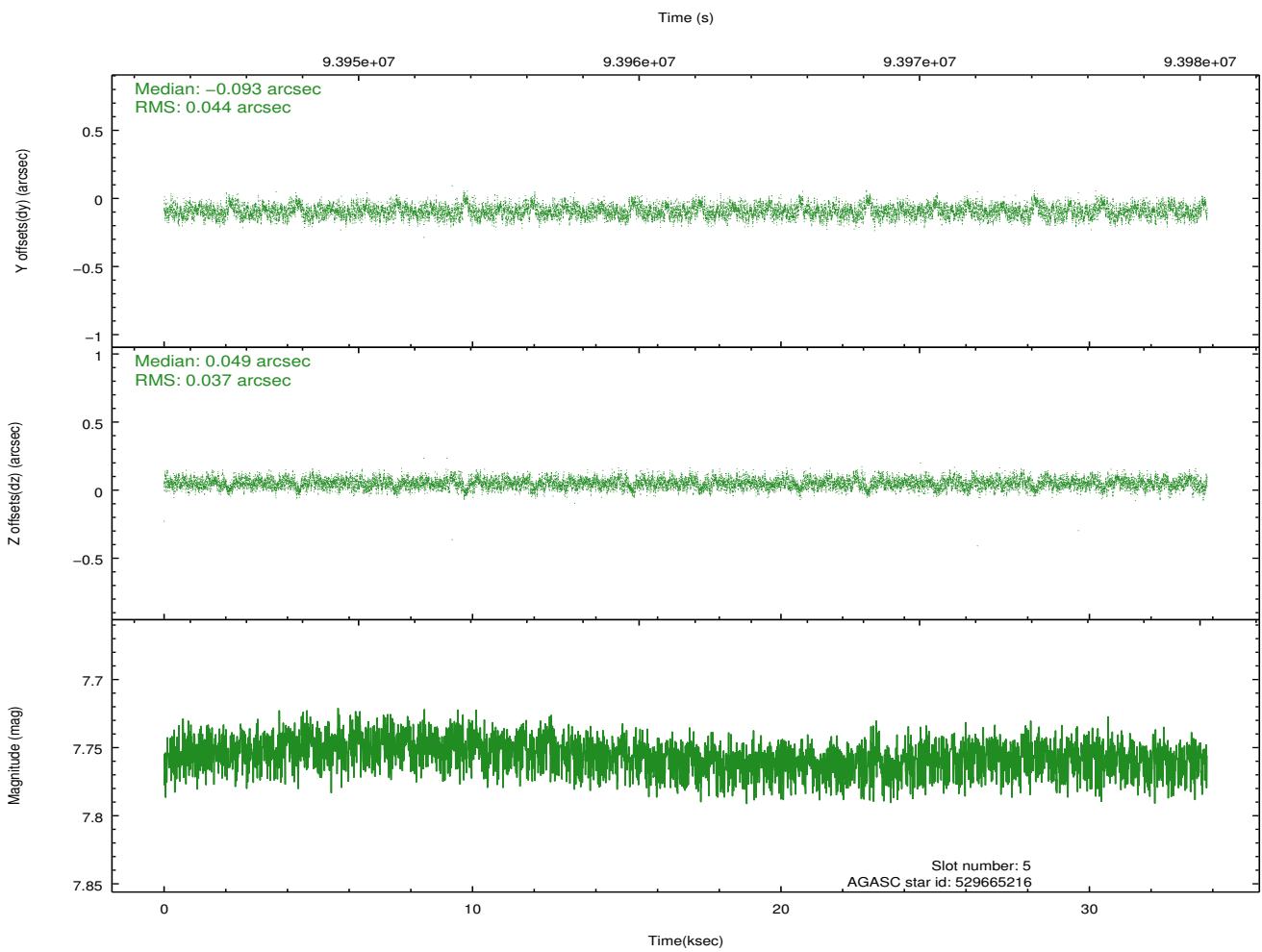
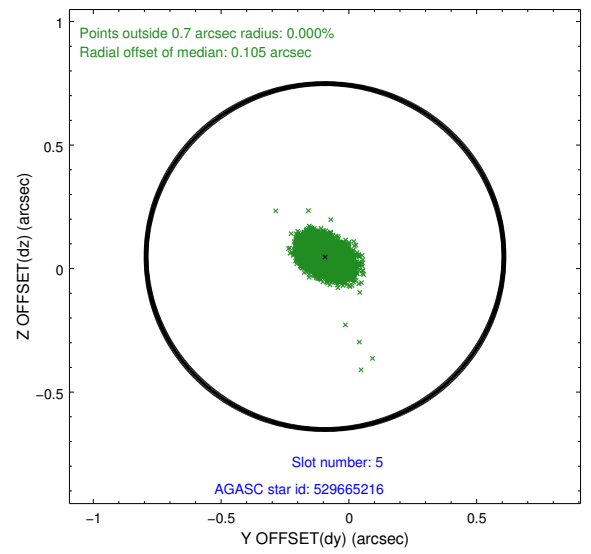
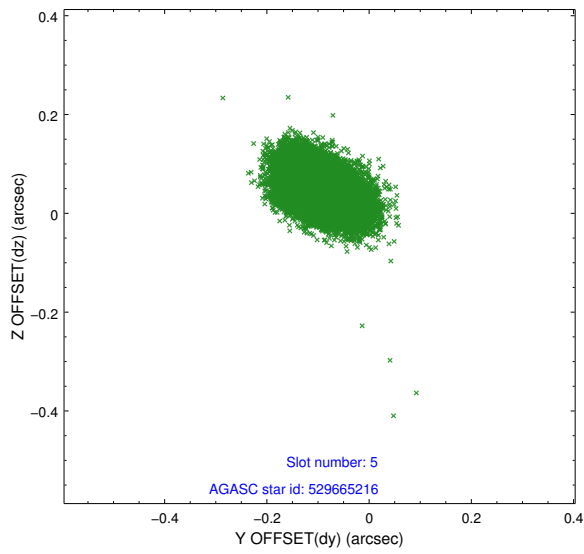
2.4.1 Slot 3



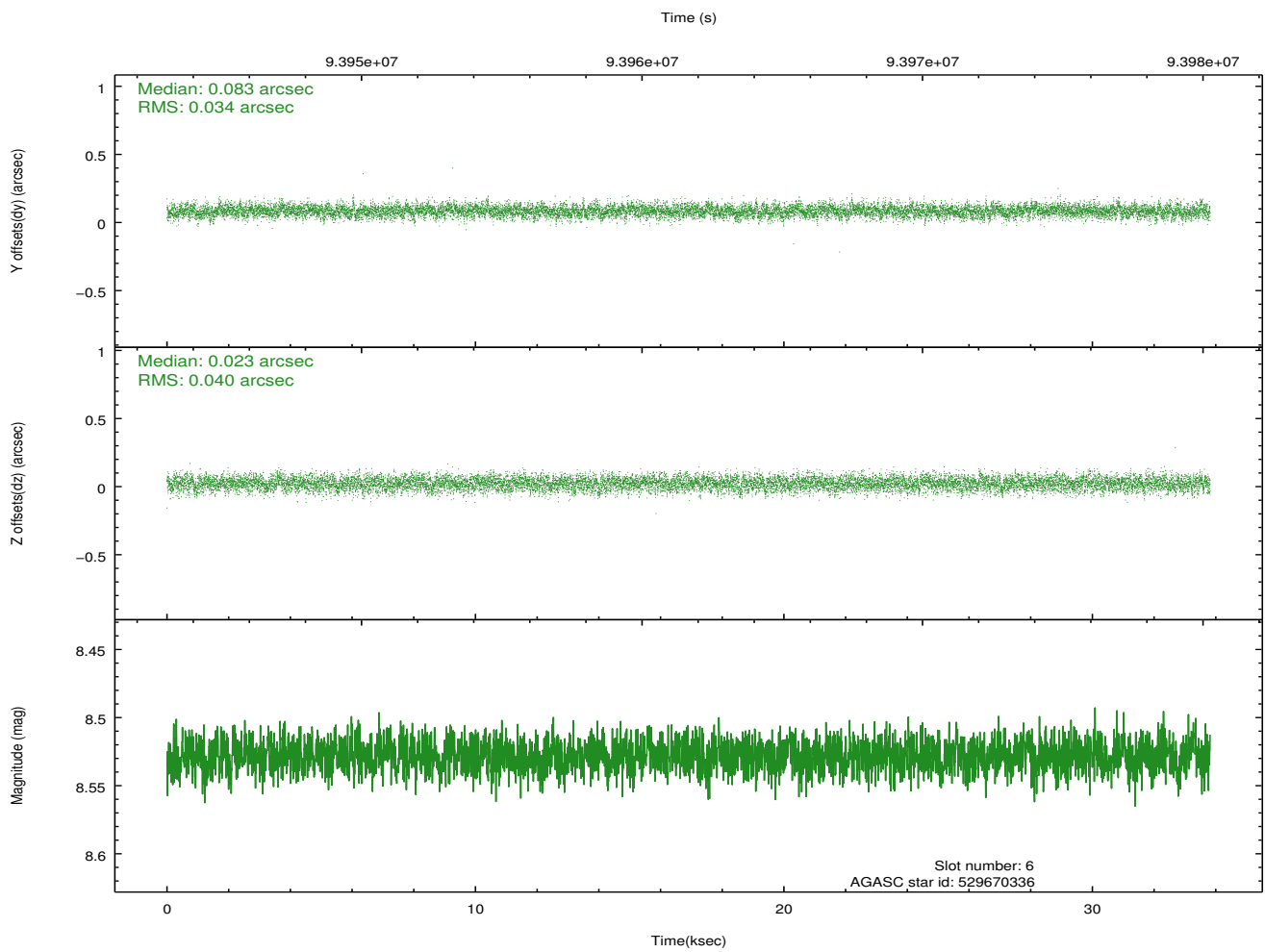
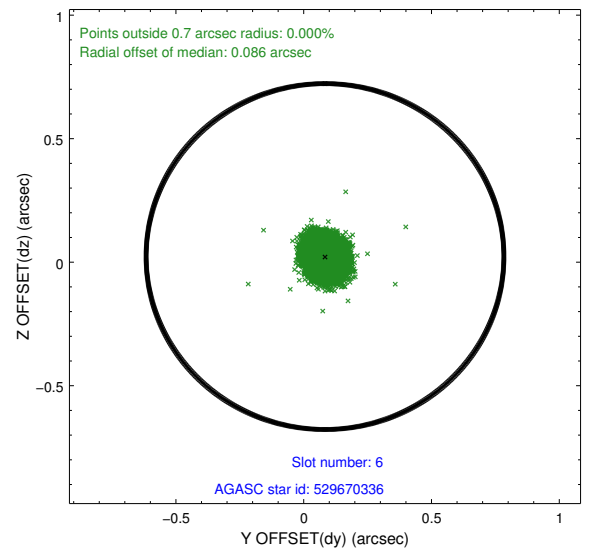
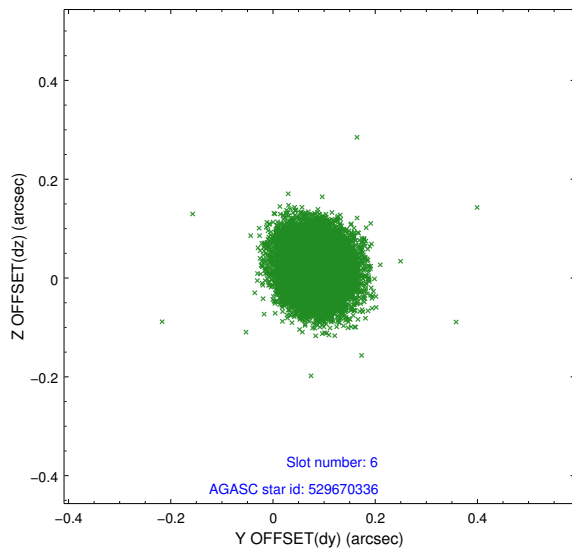
2.4.2 Slot 4



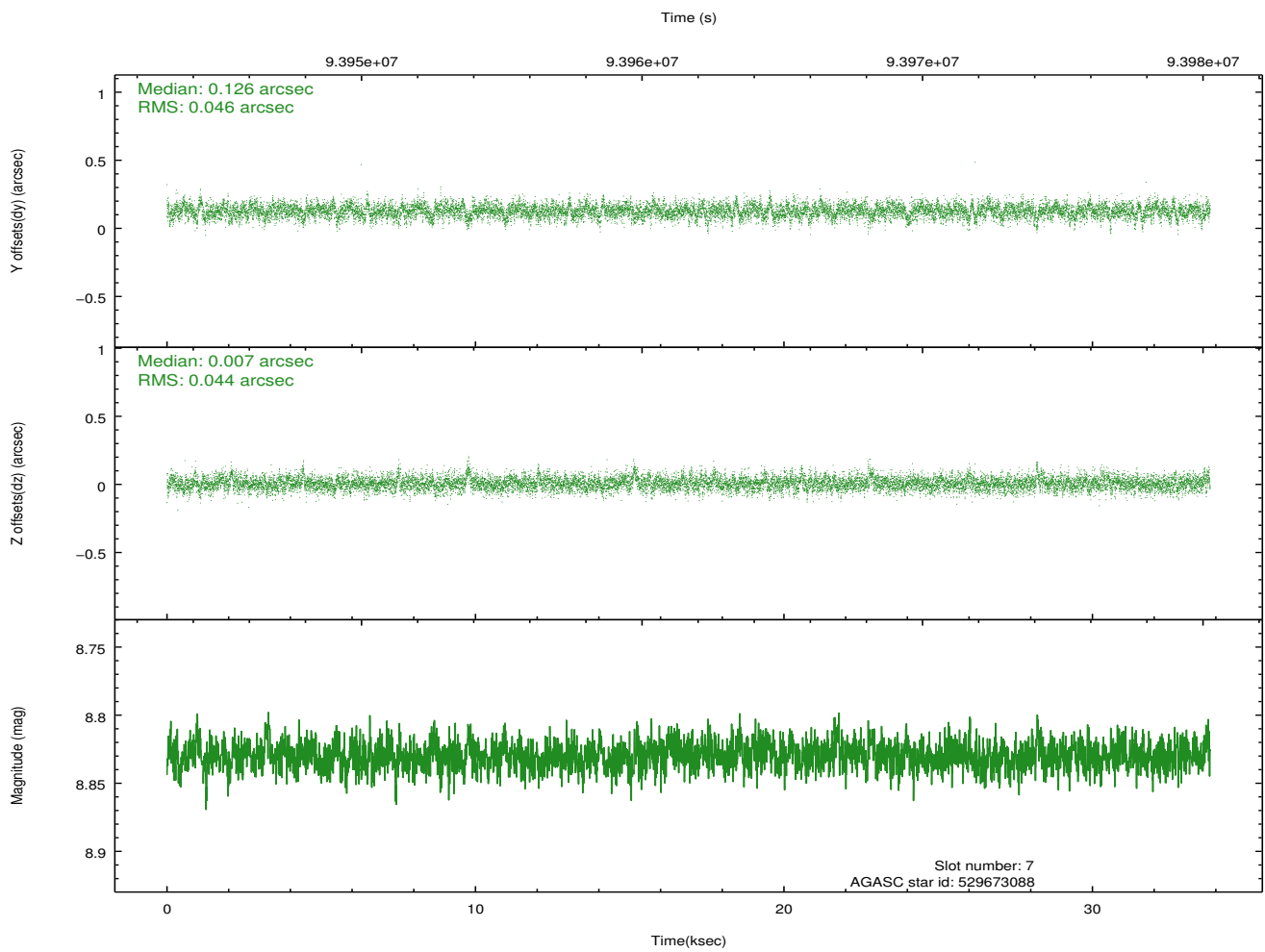
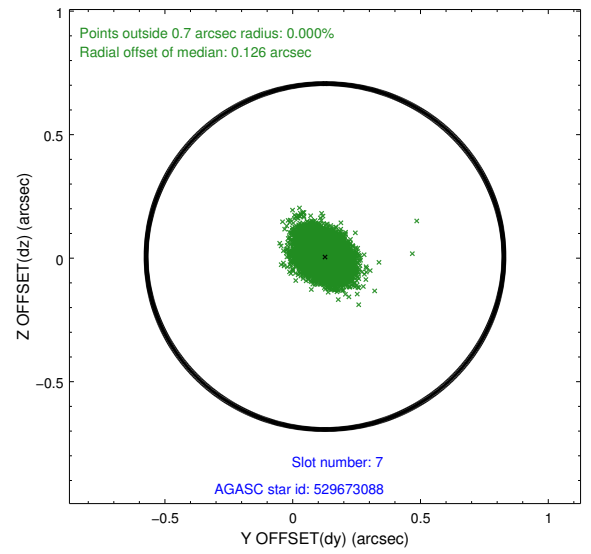
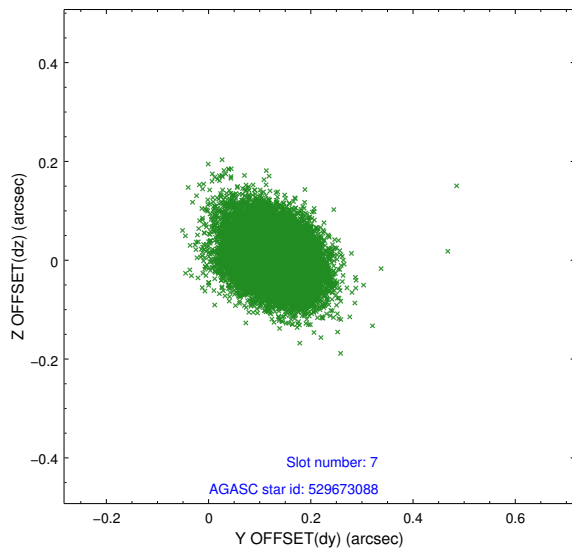
2.4.3 Slot 5



2.4.4 Slot 6

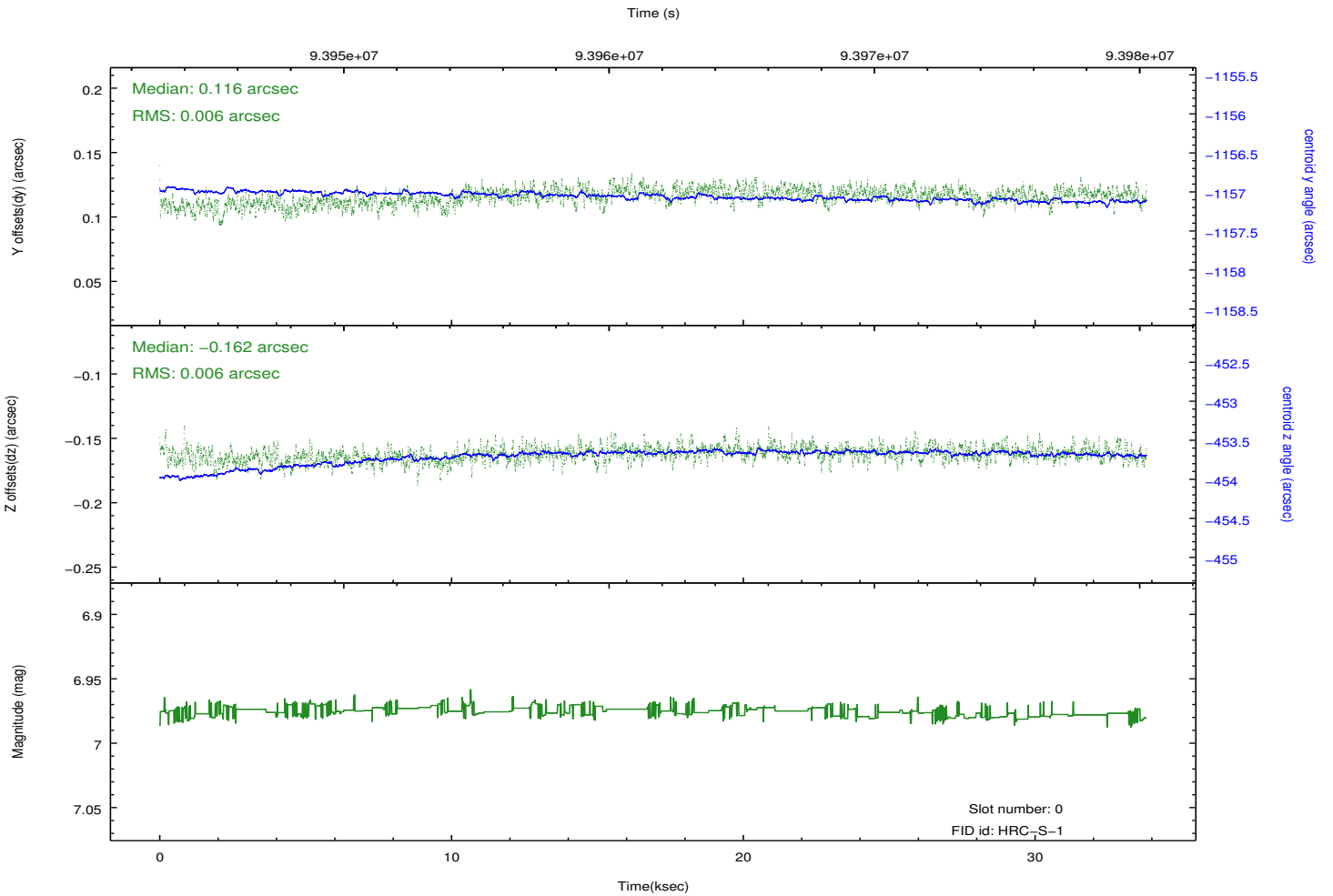
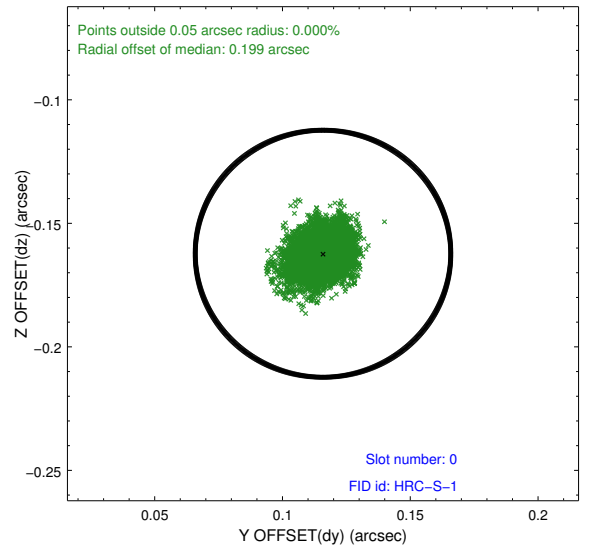
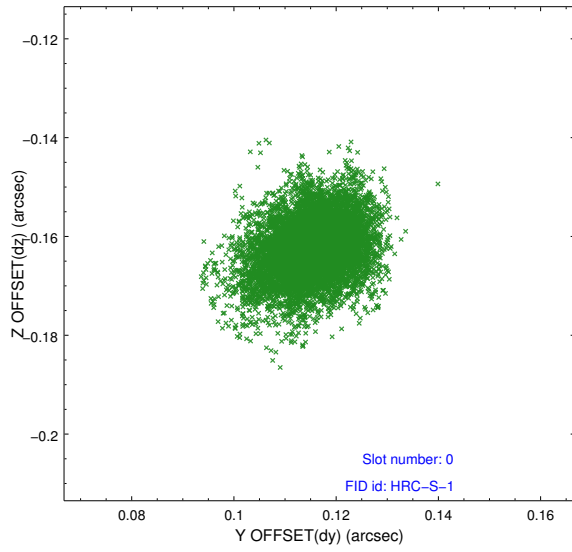


2.4.5 Slot 7

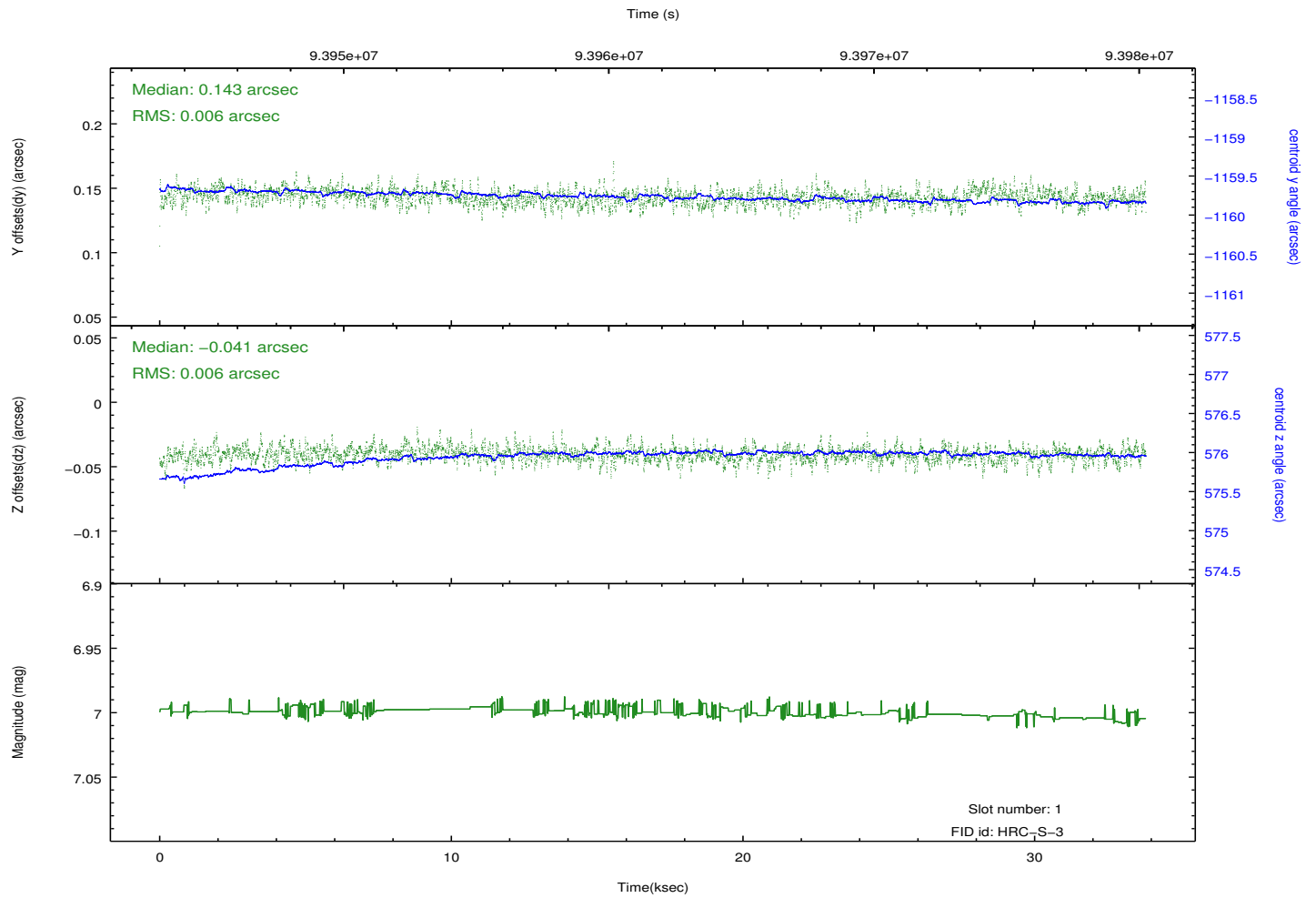
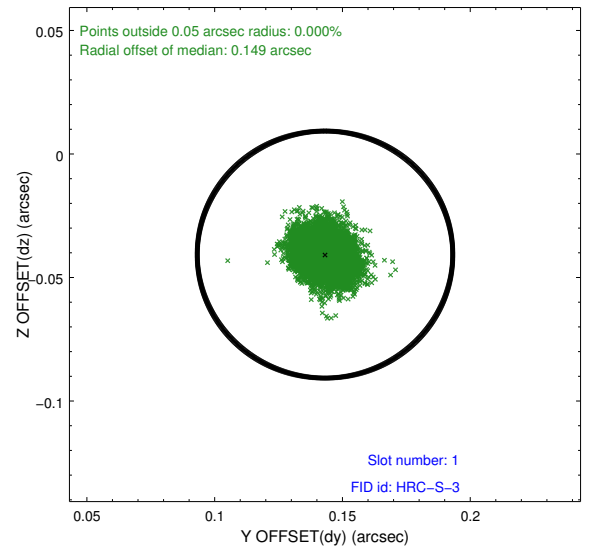
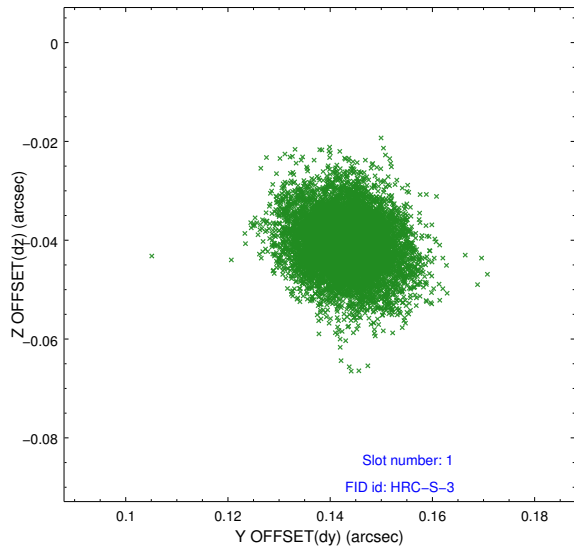


2.5 FID Slots

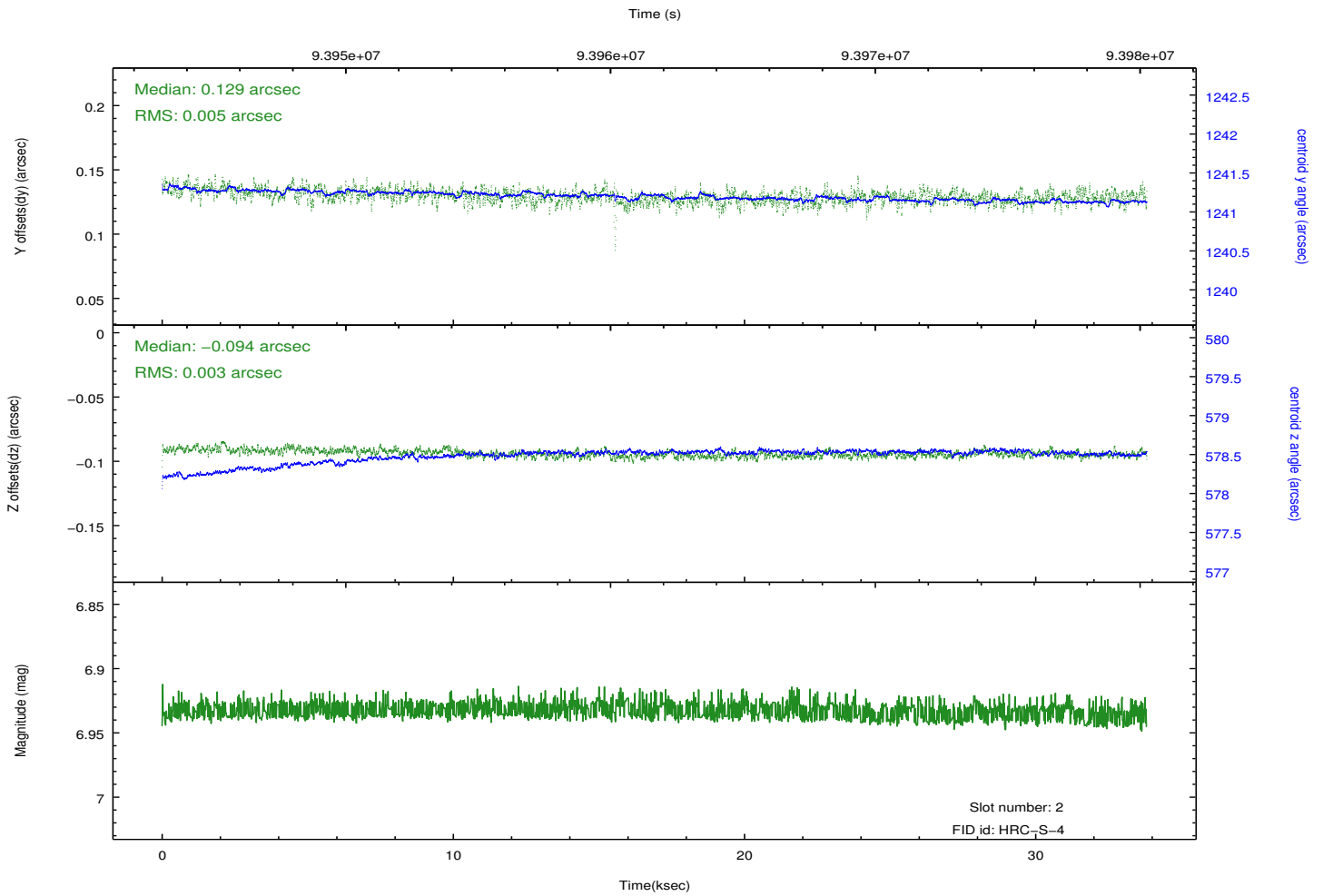
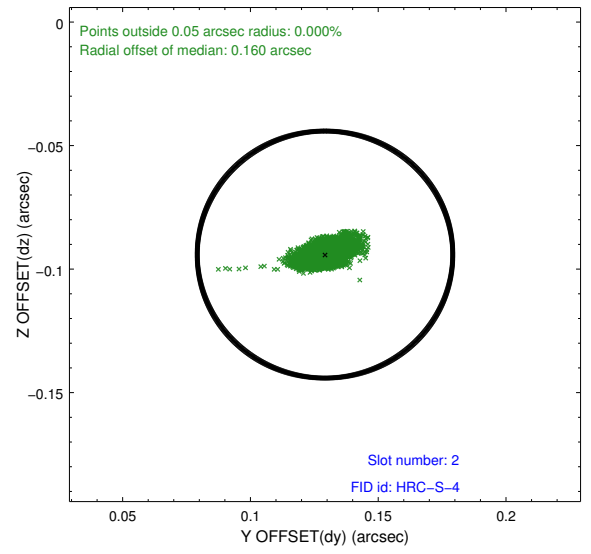
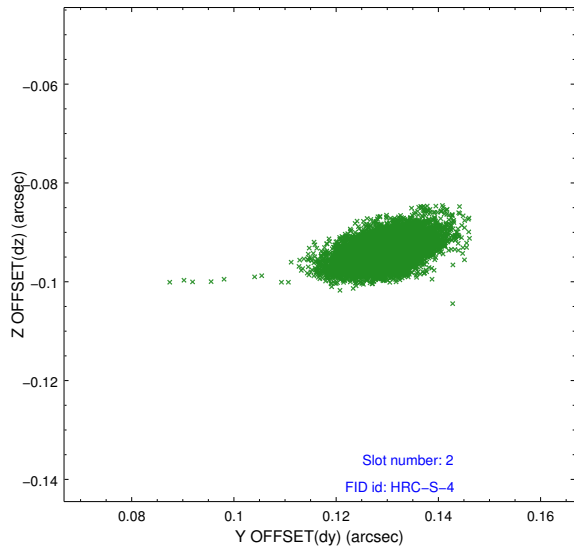
2.5.1 Slot 0



2.5.2 Slot 1



2.5.3 Slot 2



A Summary

A.1 Status

V&V Scientist	Beth Sundheim
V&V Date (YYYY-MM-DD)	2013.07.02
V&V Edition	1
V&V Disposition and Status	OK
V&V Charge Time	33.512

A.2 Comments