

V&V Reference Report

L2 ASCDS Version : 8.4.5

Observation 2038 - L2 Version 3
Chandra X-Ray Center

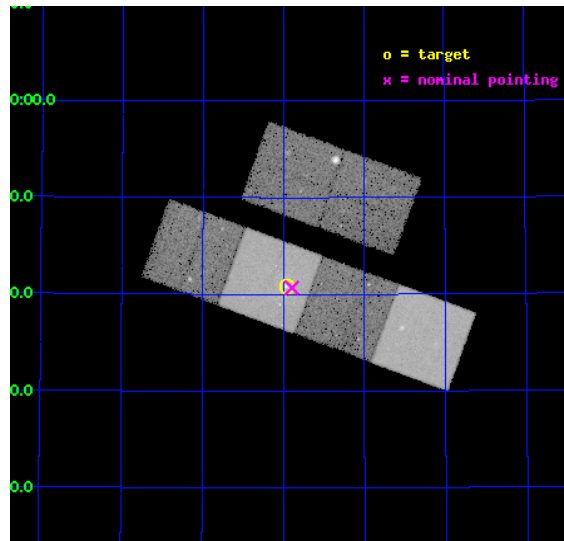
L2 Processing Date : Sep 12 2012

Contents

1	Front	2
2	OBI	3
2.1	OBI	3
2.1.1	Images	3
2.1.2	Bias	3
2.1.3	Parameters	4
2.1.4	Events	4
2.2	Compared Parameters	5
2.3	Aspect	6
2.4	Star Slots	9
2.4.1	Slot 3	9
2.4.2	Slot 4	10
2.4.3	Slot 5	11
2.4.4	Slot 6	12
2.4.5	Slot 7	13
2.5	FID Slots	14
2.5.1	Slot 0	14
2.5.2	Slot 1	15
2.5.3	Slot 2	16
A	Summary	17
A.1	Status	17
A.2	Comments	17

1 Front

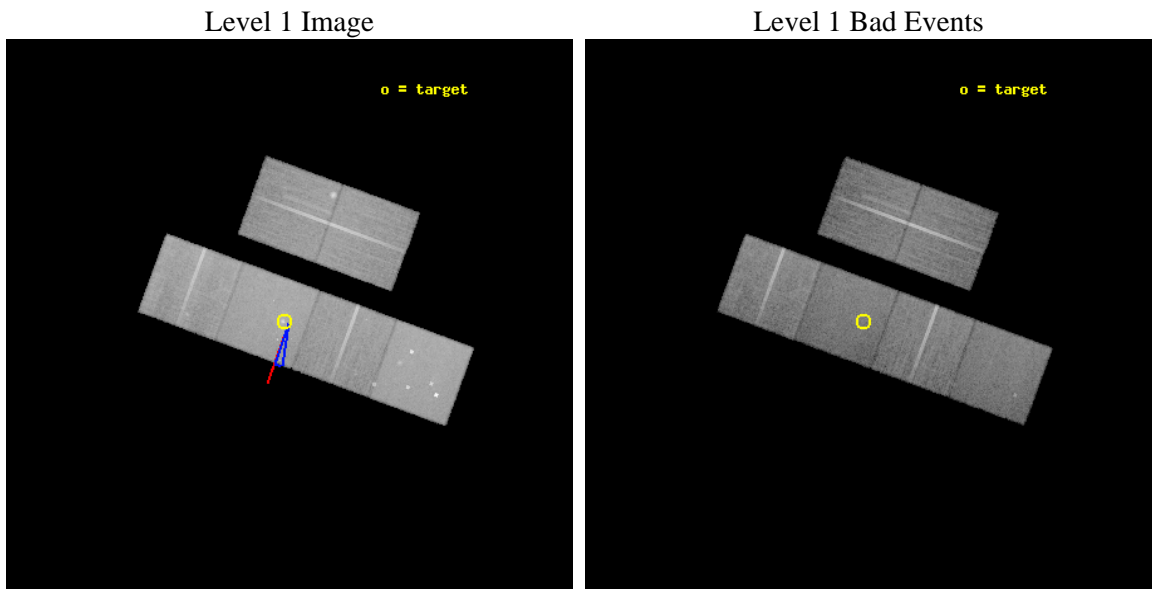
seq_num	600172	Sequence number
obs_id	2038	Observation id
title	STARBURST-NUCLEUS OUTFLOW CONES: UNDERSTANDING THE ORIGIN OF X-RAY EMISSION IN GALACTIC SUPERWINDS	Proposal title
observer	Dr David Strickland	Principal investigator
object	NGC 3079	Source name
dtcycle	0	
cycle	P	events from which exps? Prim/Second/Both
ra_targ	150.490833	Observer's specified target RA [deg]
dec_targ	55.67975	Observer's specified target Dec [deg]
ra_nom	150.47369575276	Nominal RA [deg]
dec_nom	55.678081245714	Nominal Dec [deg]
roll_nom	200.17077241013	Nominal Roll [deg]
revision	3	Processing version of data
ontime	26917.324927345	Sum of GTIs [s]
livetime	26576.481551448	Livetime [s]
ontime2	26917.365967348	Sum of GTIs [s]
ontime3	26917.20180735	Sum of GTIs [s]
ontime5	26917.283887342	Sum of GTIs [s]
ontime6	26914.001887098	Sum of GTIs [s]
ontime7	26917.324927345	Sum of GTIs [s]
ontime8	26917.160767347	Sum of GTIs [s]
l2events	274490	Number of level 2 events



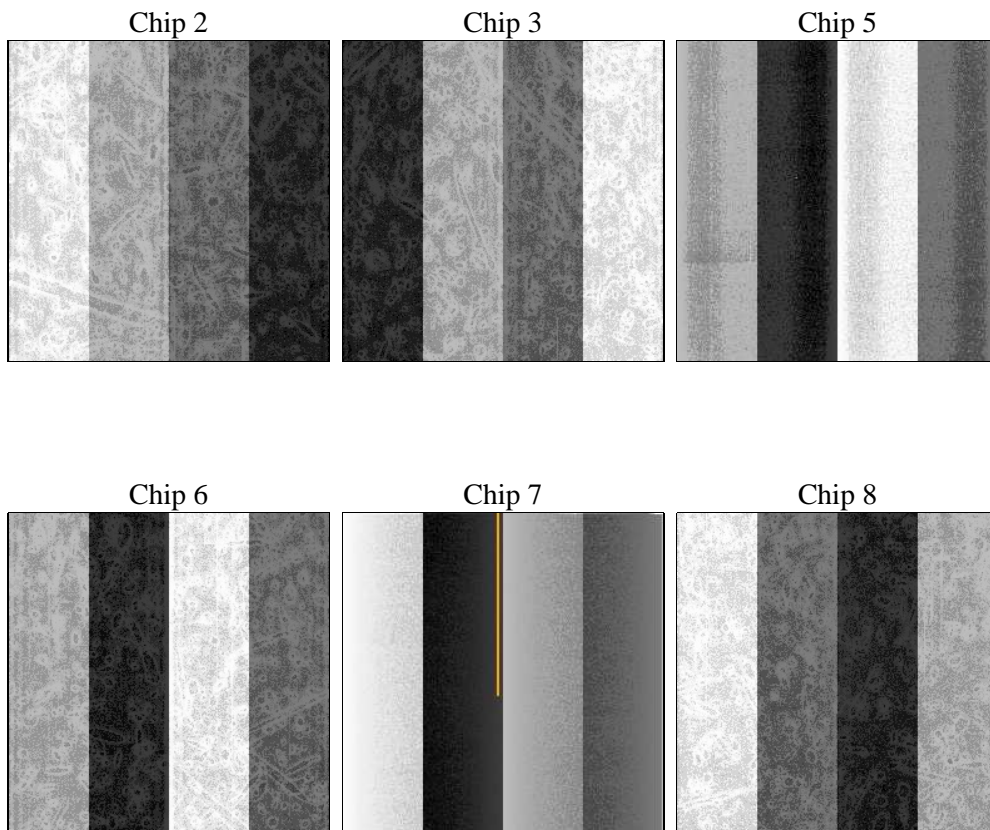
2 OBI

2.1 OBI

2.1.1 Images



2.1.2 Bias



2.1.3 Parameters

obi_num	0	Obi number	sched_exp_time	27000.000000	[s] Scheduled observation exposure time
ascdsver	8.4.5	Processing system revision	ontime	26917.324927345	Sum of GTIs [s]
caldbver	4.5.1.1	 	ontime2	26917.365967348	Sum of GTIs [s]
date	2012-09-12T00:49:10	Date and time of file creation	ontime3	26917.20180735	Sum of GTIs [s]
revision	3	Processing version of data	ontime5	26917.283887342	Sum of GTIs [s]
			ontime6	26914.001887098	Sum of GTIs [s]
			ontime7	26917.324927345	Sum of GTIs [s]
			ontime8	26917.160767347	Sum of GTIs [s]
			l1events	1238147	Number of level 1 events

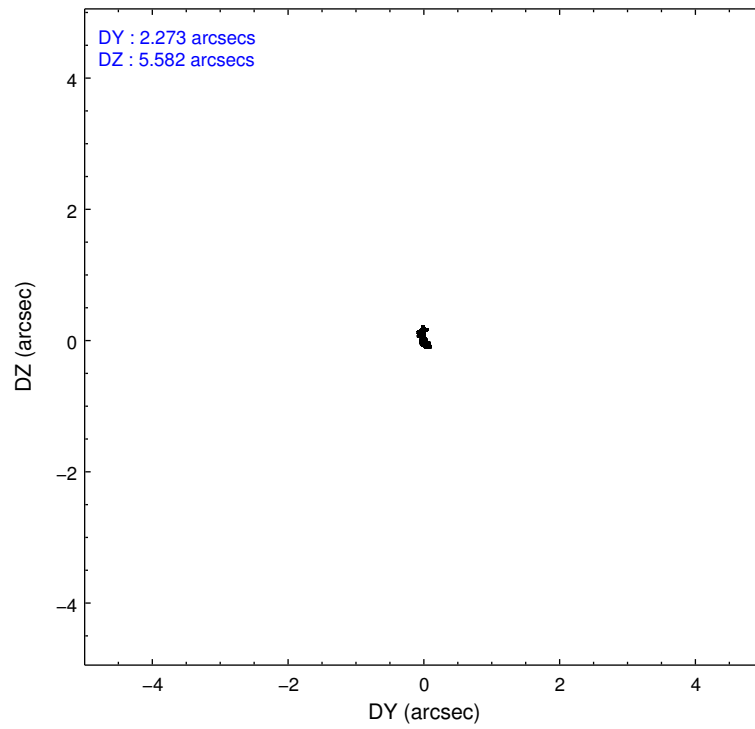
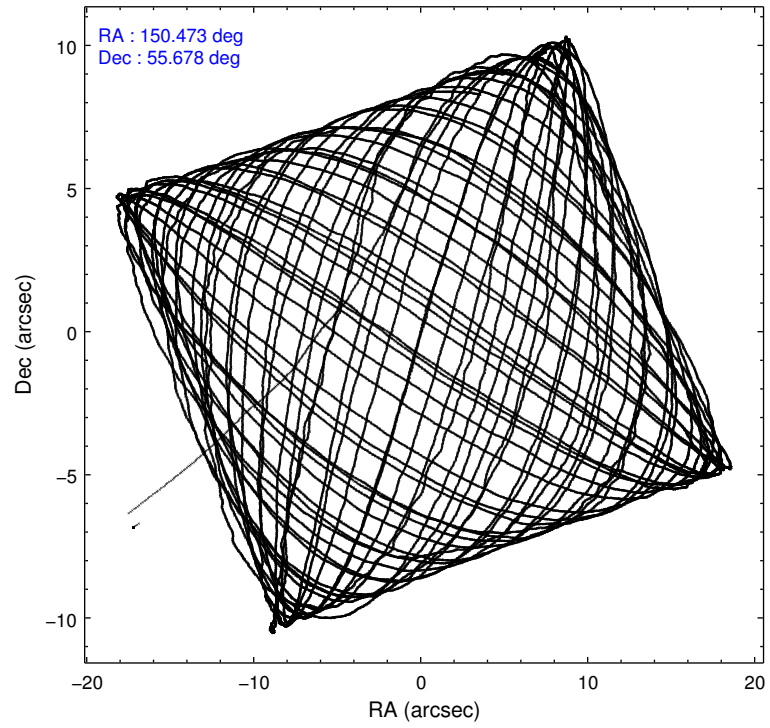
2.1.4 Events

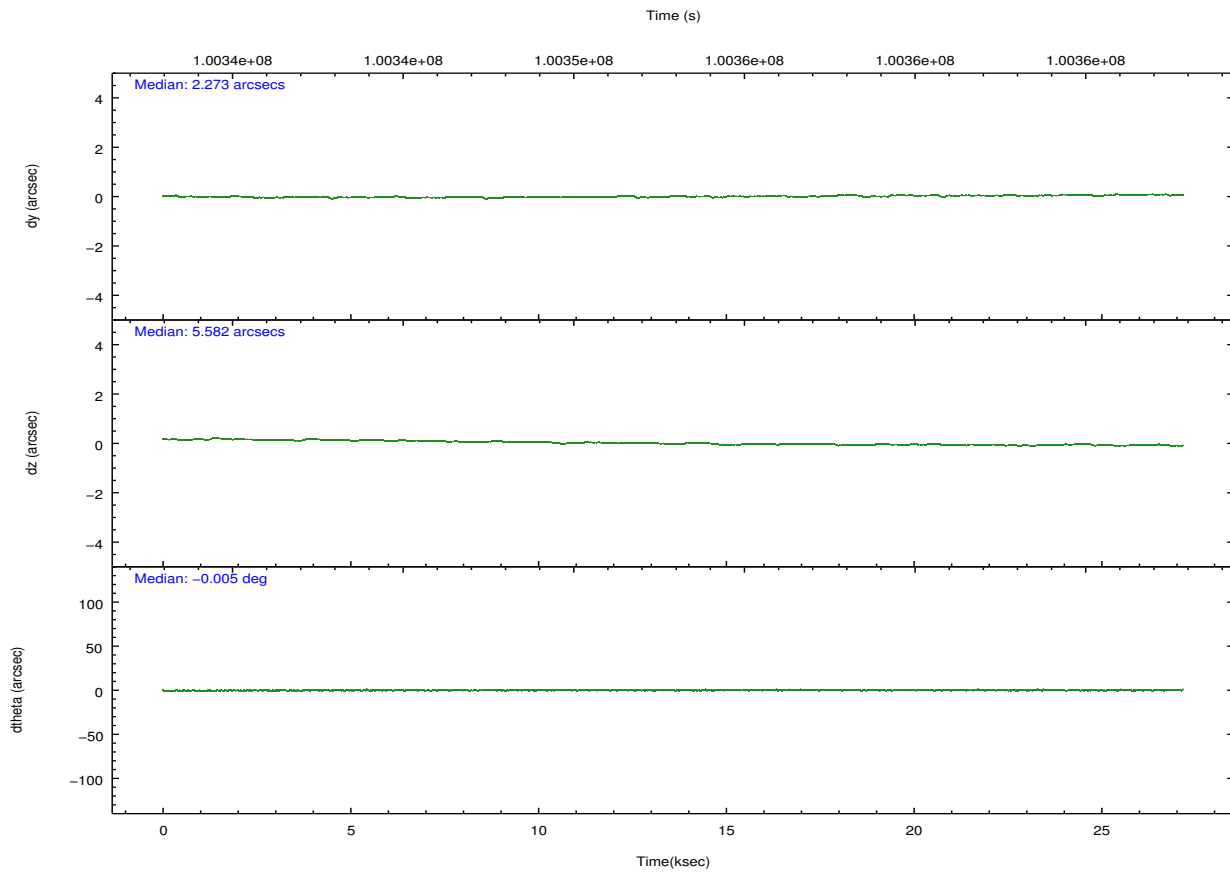
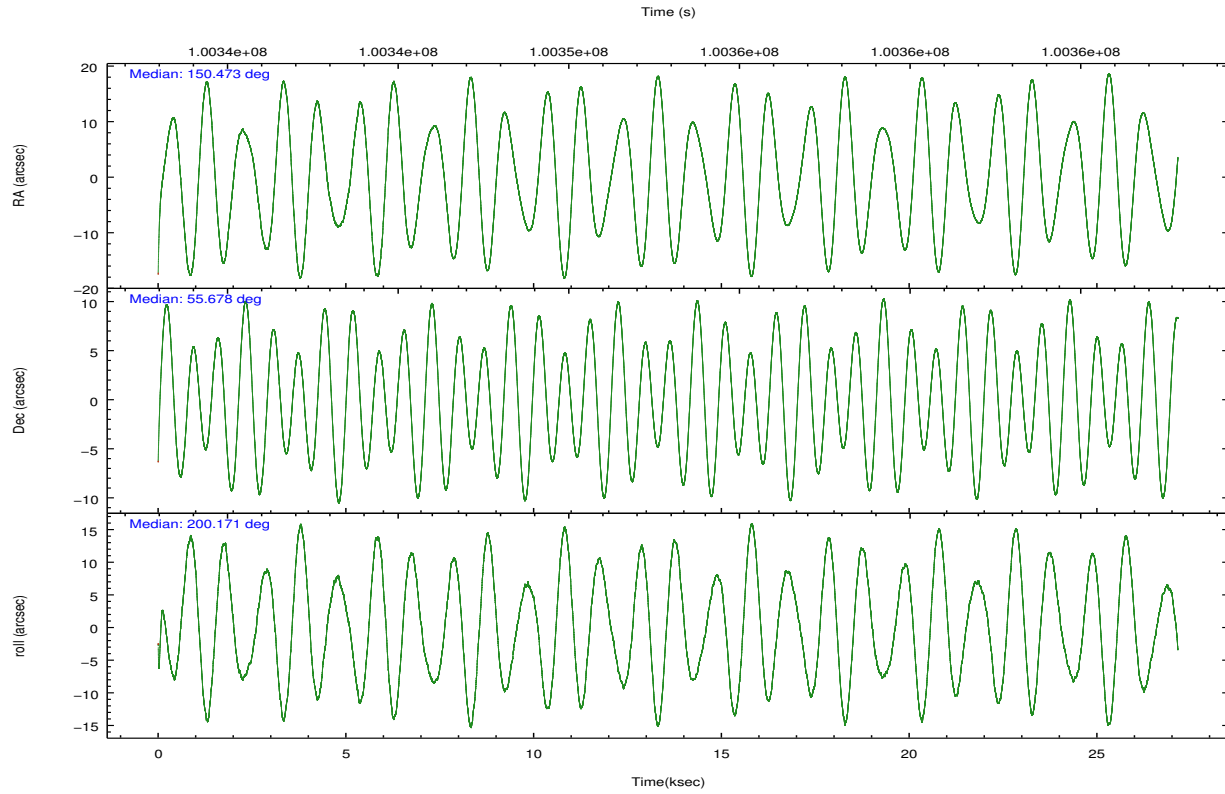
	ccd 2	ccd 3	ccd 5	ccd 6	ccd 7	ccd 8		ccd 2	ccd 3	ccd 5	ccd 6	ccd 7	ccd 8
level 1 events	181824	172653	254612	180681	229684	218693	grade 0 events	7920	11076	18763	8455	11072	13655
rejected events	162622	150277	132332	160268	130670	175224		4%	6%	7%	4%	4%	6%
rejected %	89%	87%	51%	88%	56%	80%	grade 1 events	78	78	688	80	191	137
								0%	0%	0%	0%	0%	0%
							grade 2 events	4152	4011	35761	3986	19870	9402
								2%	2%	14%	2%	8%	4%
							grade 3 events	1840	2019	5097	1986	9148	4636
								1%	1%	2%	1%	3%	2%
							grade 4 events	1863	1929	4998	2070	9046	4358
								1%	1%	1%	1%	3%	1%
							grade 5 events	6247	6690	19081	7370	21562	9411
								3%	3%	7%	4%	9%	4%
							grade 6 events	3430	3347	57690	3921	49904	11425
								1%	1%	22%	2%	21%	5%
							grade 7 events	156294	143503	112534	152813	108891	165669
								85%	83%	44%	84%	47%	75%

2.2 Compared Parameters

Parameter	Planned	Actual	Parameter	Planned	Actual
Instrument	ACIS	ACIS	Obspar format version number	7	7
Detector	ACIS-235678	ACIS-235678	Obspar file type	PREDICTED	ACTUAL
Grating	NONE	NONE	Obspar update status	NONE	UPDATED
Data mode	FAINT	FAINT	Number of optional ACIS chips dropped	0	0
Observation mode	POINTING	POINTING	On-chip summing requested	N	N
[deg] Pointing RA	150.504392	150.4736957527647	Subarray requested	NONE	NONE
[deg] Pointing Dec	55.699209	55.67808124571402	Alternating exposures requested	N	N
[deg] Pointing Roll	199.988805	200.1707724101318	[s] Primary exposure time	0.000000	3.2
[deg] Roll angle	195.000000	195.000000			
[deg] Roll tolerance	5.000000	5.000000			
Roll constraint allows 180D rotation	N	N			
[mm] SIM focus pos	-0.684267	-0.6828225247311905			
[mm] SIM defocus	0	0.001444936568705701			
[mm] SIM translation stage pos	-190.132523	-190.1400660498719			
[mm] SIM translation stage offset	0	0.00754346686406393			
[s] Observation start time (MET)	100339486.184000	100338519.36853			
Observation start date	2001-03-07T08:03:42	2001-03-07T07:48:39			
[s] Observation end time (MET)	100366486.184000	100367296.75714			
Observation end date	2001-03-07T15:33:42	2001-03-07T15:48:16			
Read mode	TIMED	TIMED			

2.3 Aspect



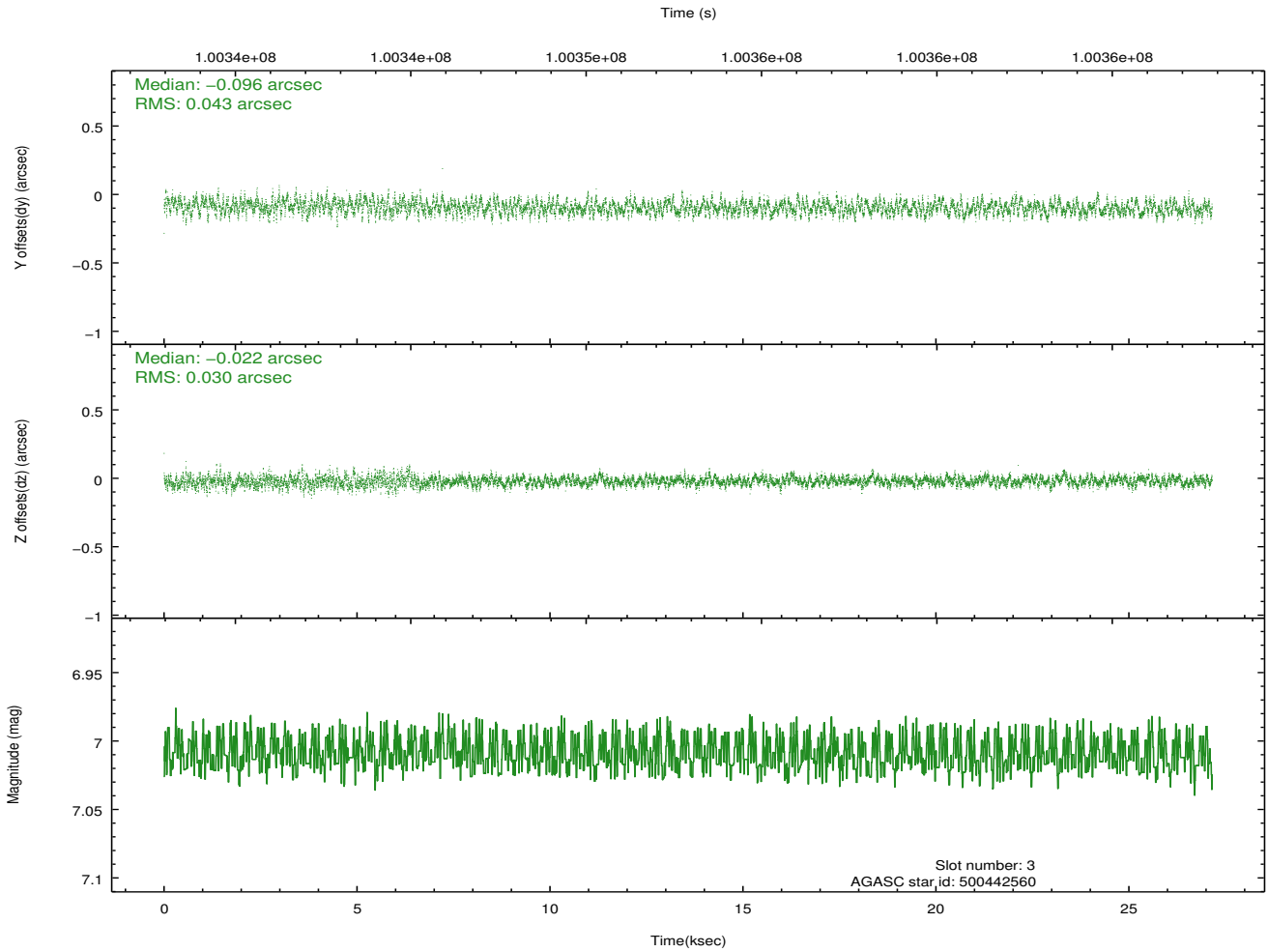
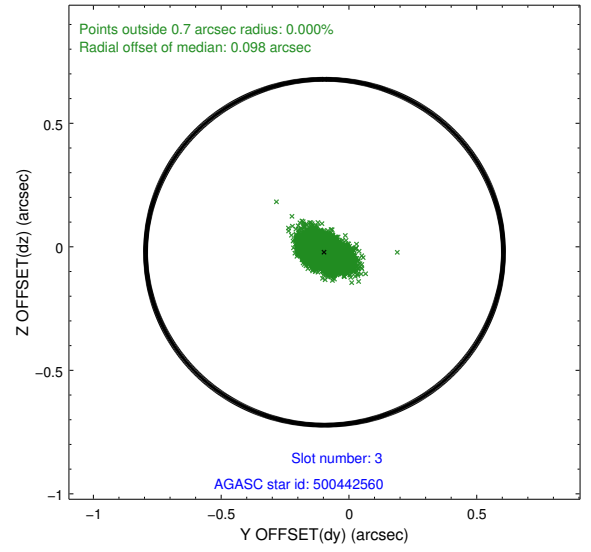
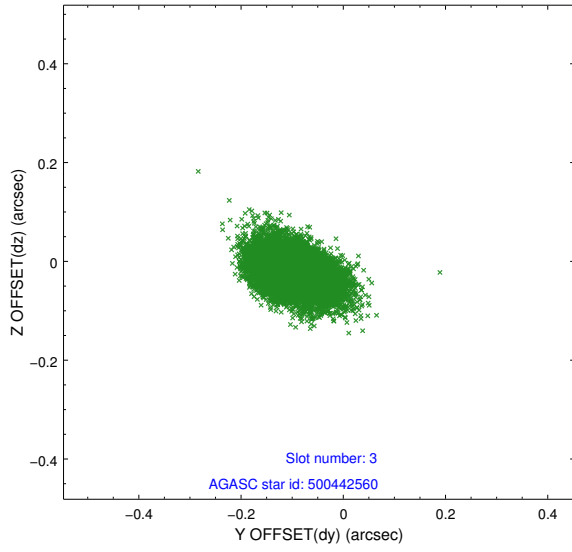


Slot Statistics

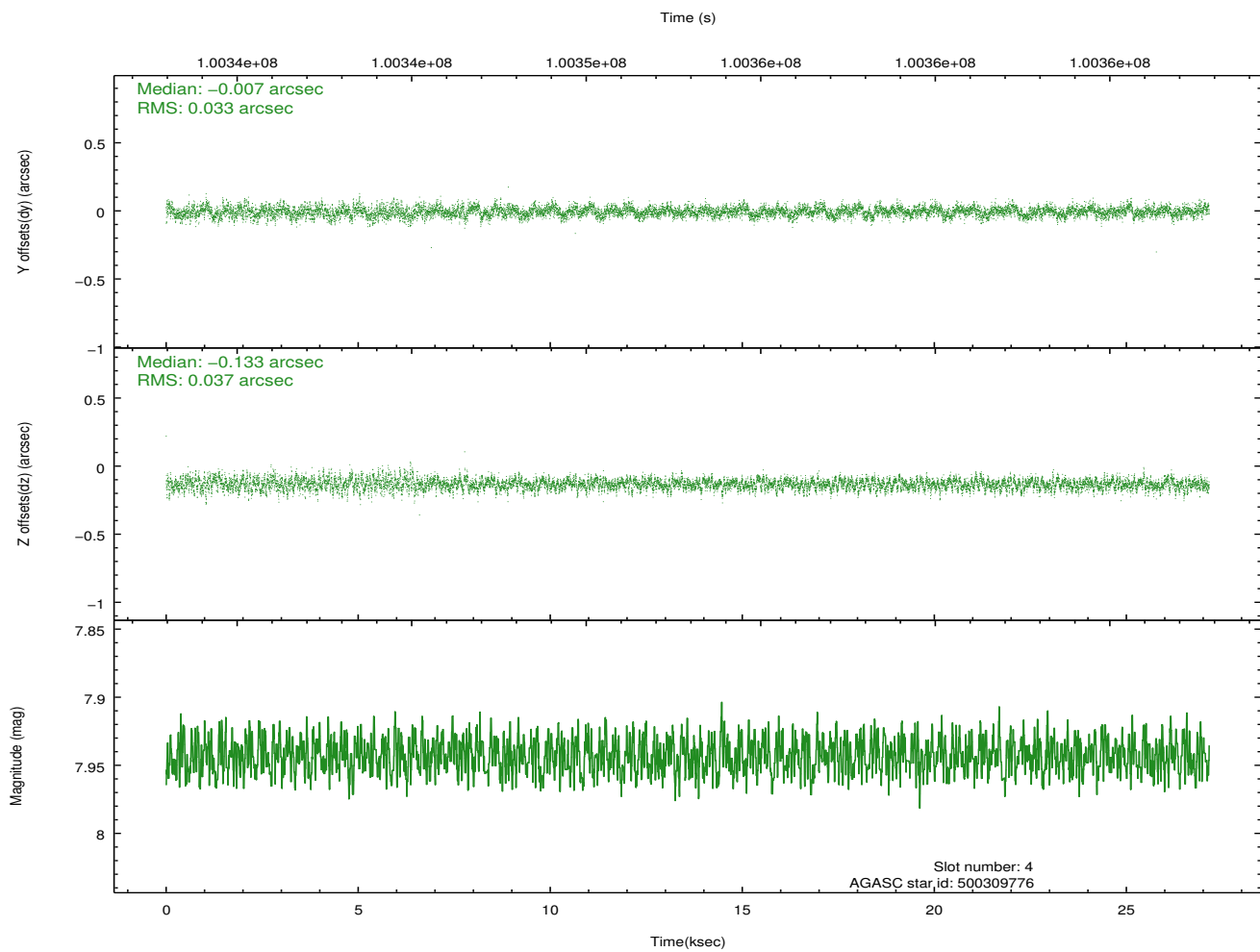
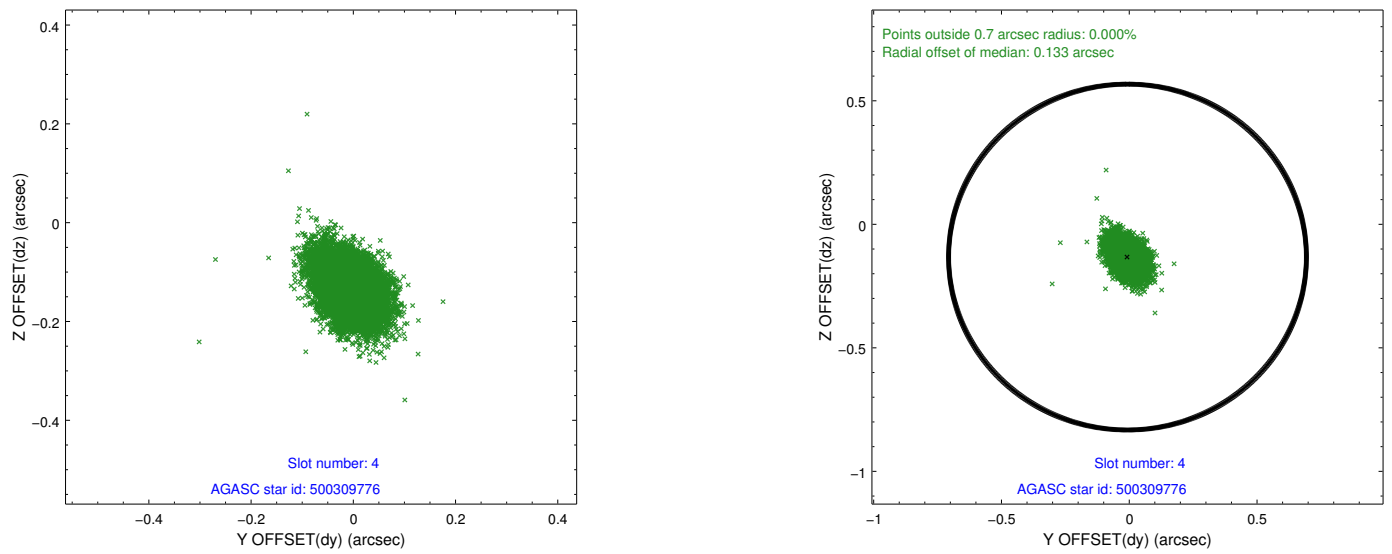
slot	status	id	mag	n_pts	med_dy	med_dz	dr1	dr2	ra	dec	mean_y	mean_z
0	FID	ACIS-S-2	7.11	6622	-0.040	-0.001	0.007	0.011	0.000000	0.000000	-754.90	-1726.75
1	FID	ACIS-S-4	7.20	6622	-0.025	0.019	0.006	0.011	0.000000	0.000000	2158.31	181.72
2	FID	ACIS-S-5	7.24	6624	0.034	-0.010	0.007	0.012	0.000000	0.000000	-1807.59	175.38
3	GUIDE	500442560	7.01	13248	-0.096	-0.022	0.055	0.092	151.619747	55.769496	-2216.66	516.63
4	GUIDE	500309776	7.94	13244	-0.007	-0.133	0.051	0.088	150.409238	55.585087	321.22	319.54
5	GUIDE	500311288	8.58	13241	0.050	0.040	0.074	0.120	149.915988	55.168561	1787.04	1376.39
6	GUIDE	500310136	8.67	13246	0.101	0.085	0.062	0.105	149.694298	55.069248	2340.13	1550.97
7	GUIDE	500437816	8.67	13246	-0.049	0.028	0.060	0.100	151.181905	56.134575	-1816.48	-1015.00

2.4 Star Slots

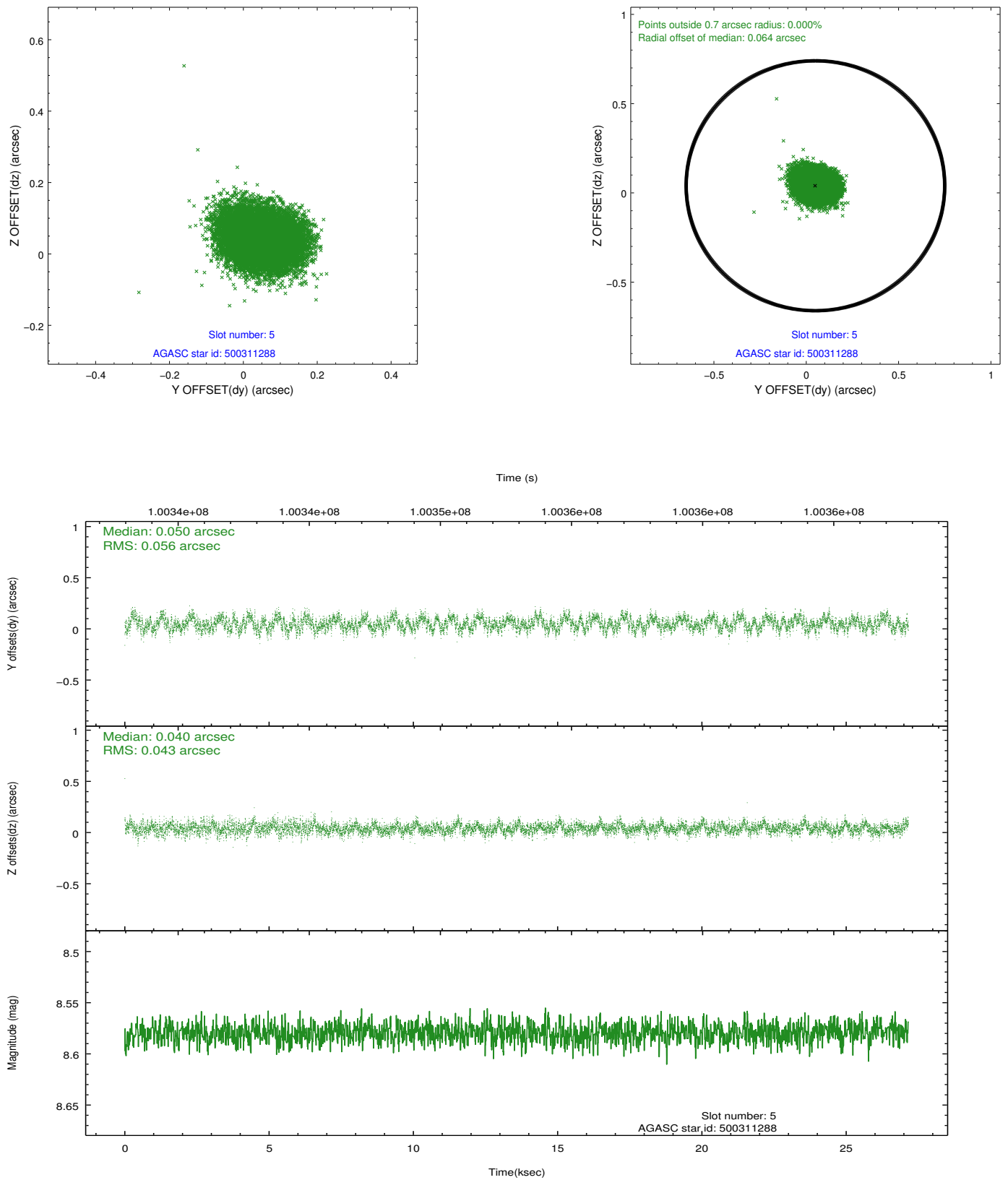
2.4.1 Slot 3



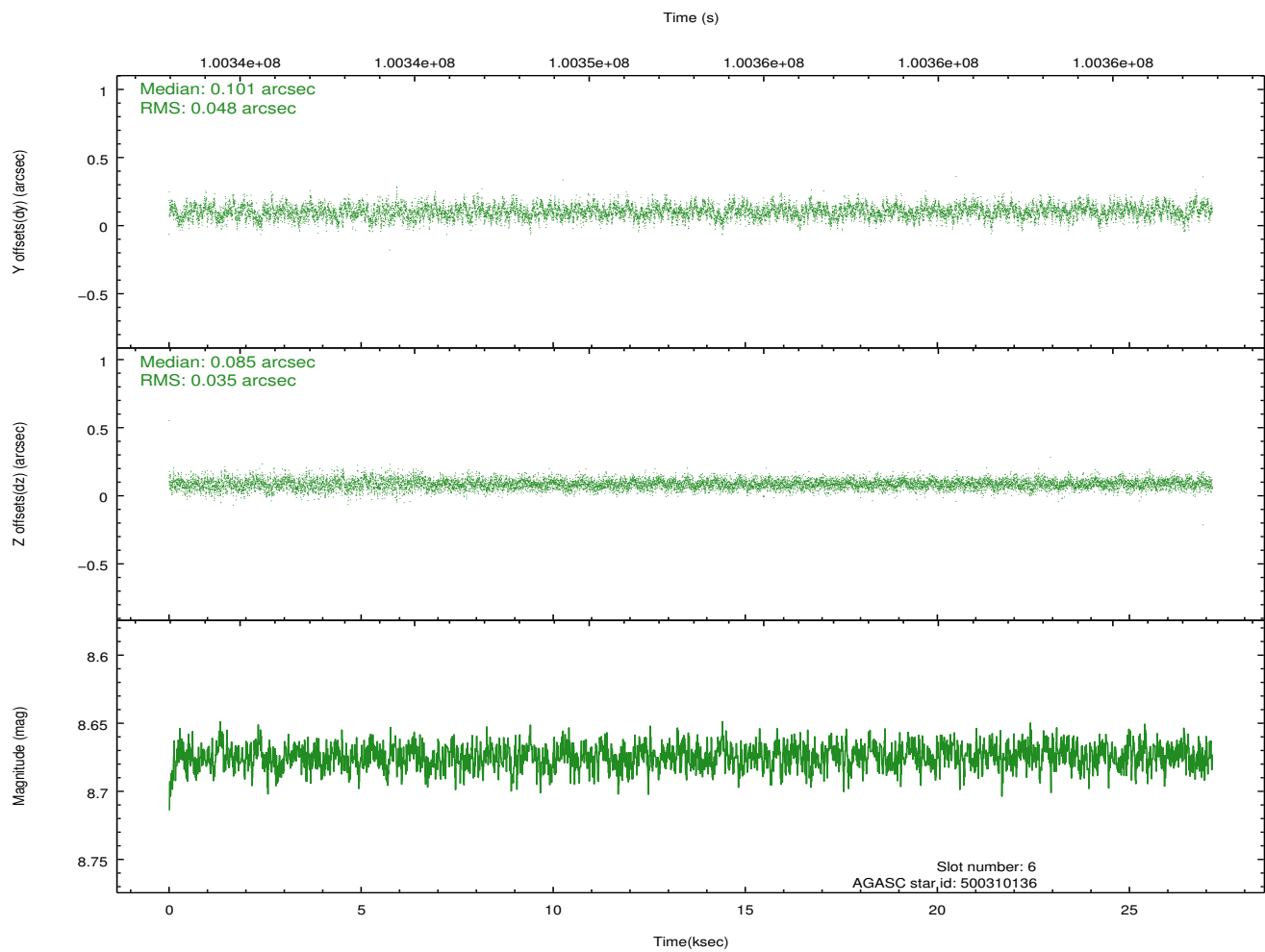
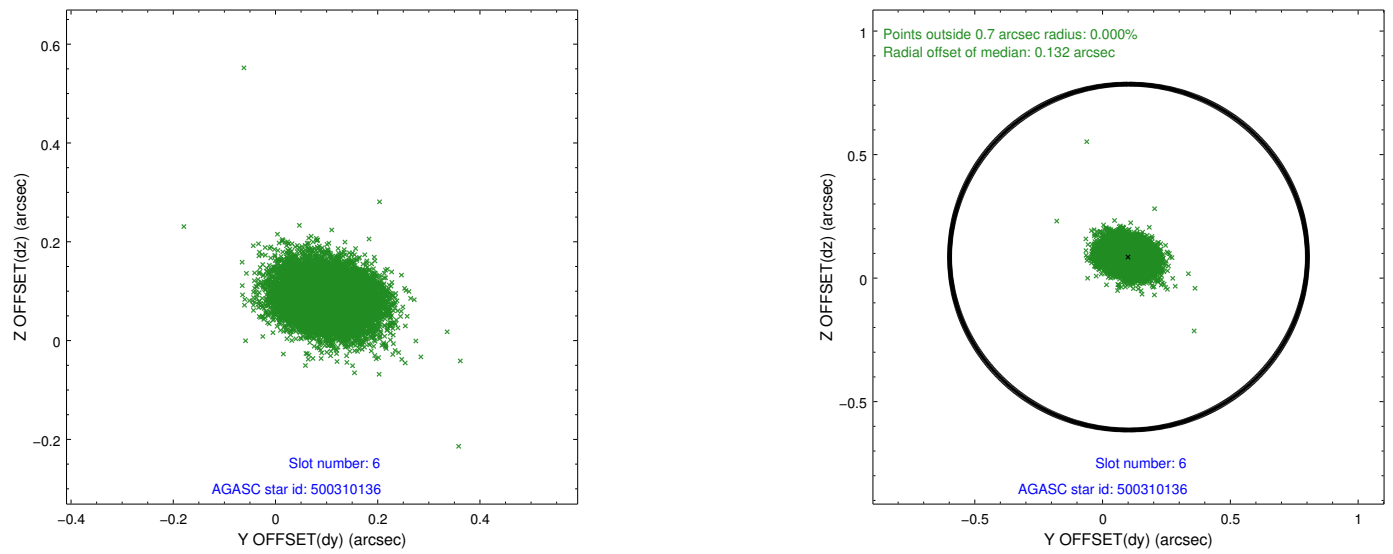
2.4.2 Slot 4



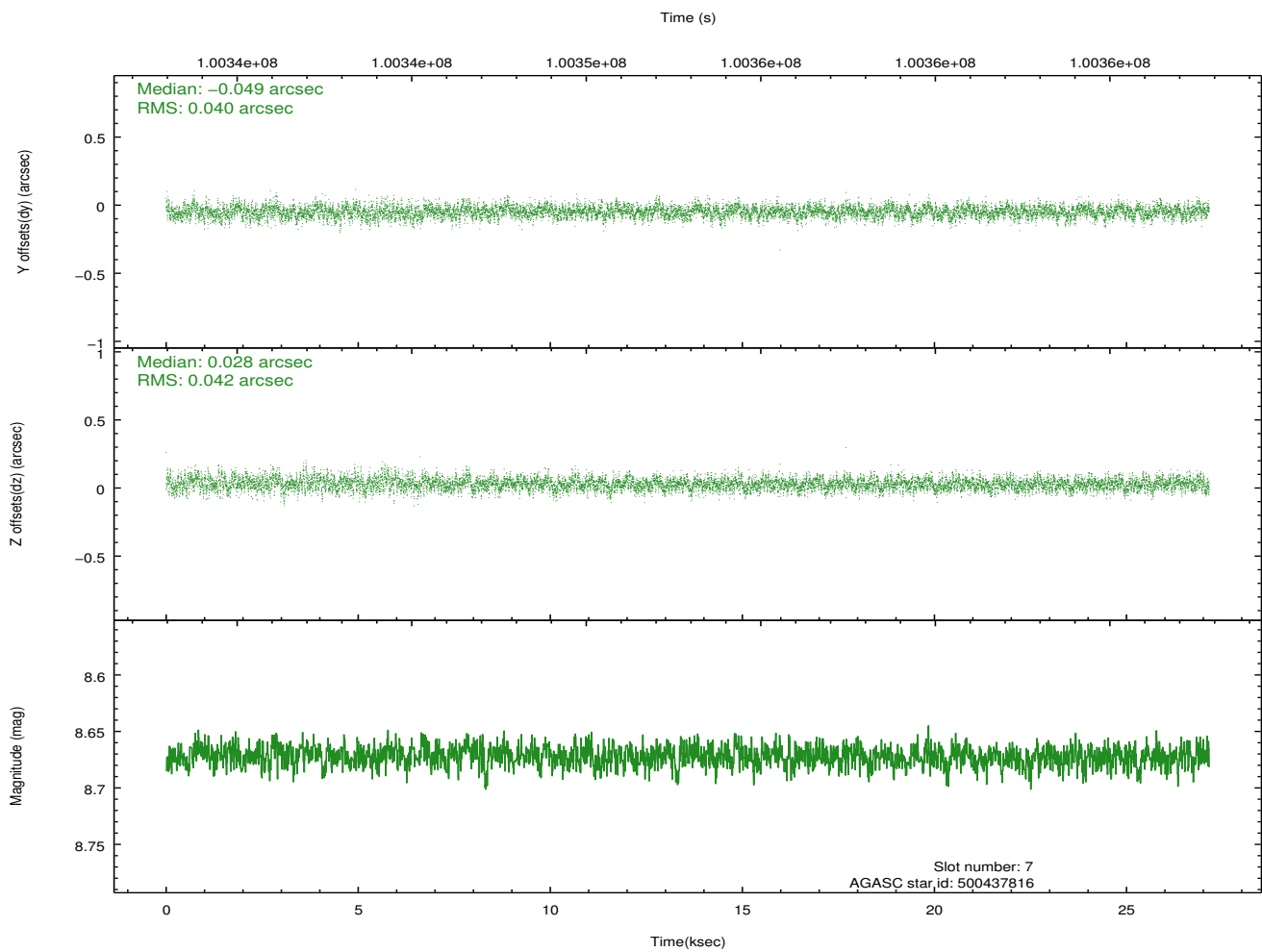
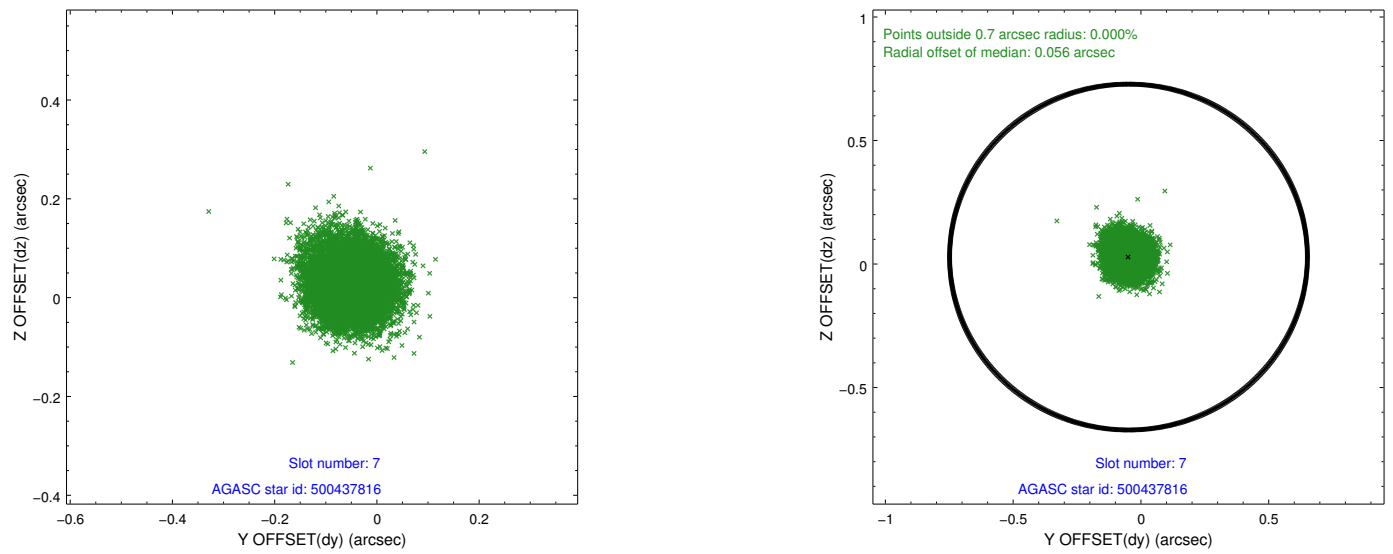
2.4.3 Slot 5



2.4.4 Slot 6

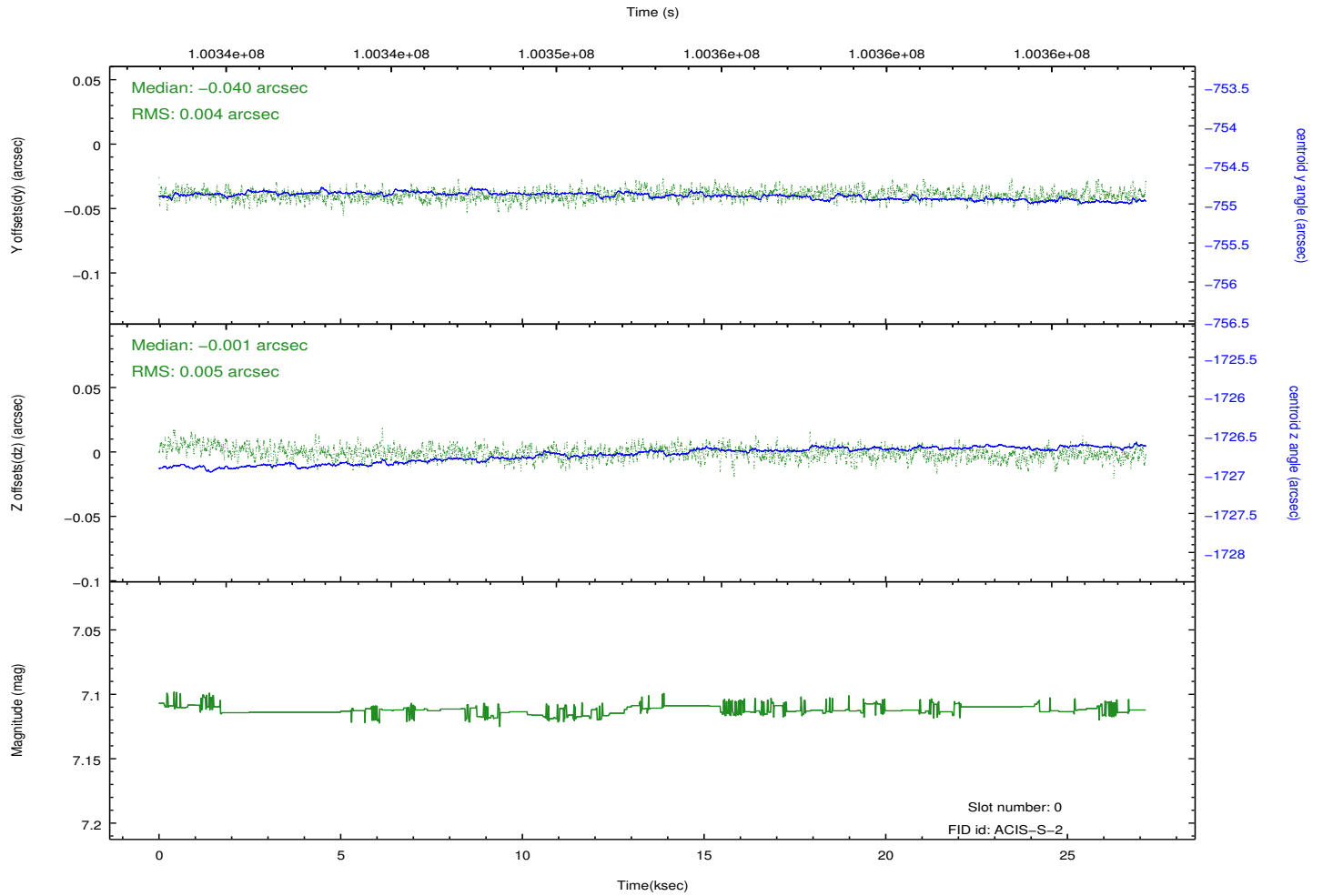
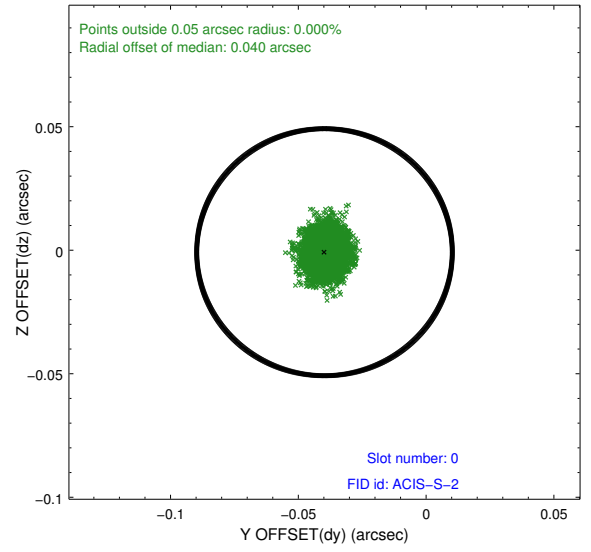
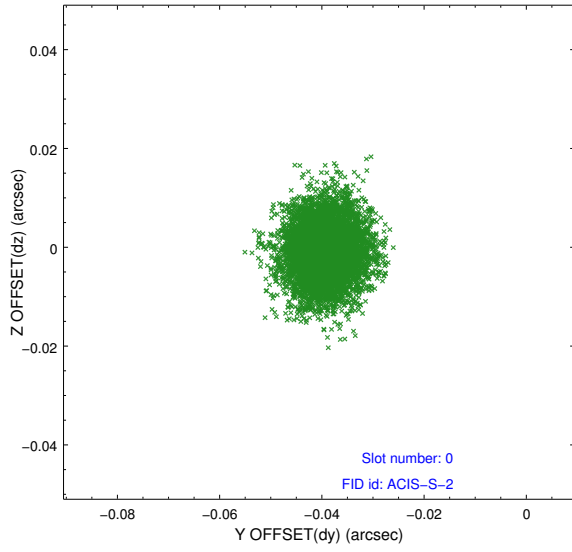


2.4.5 Slot 7

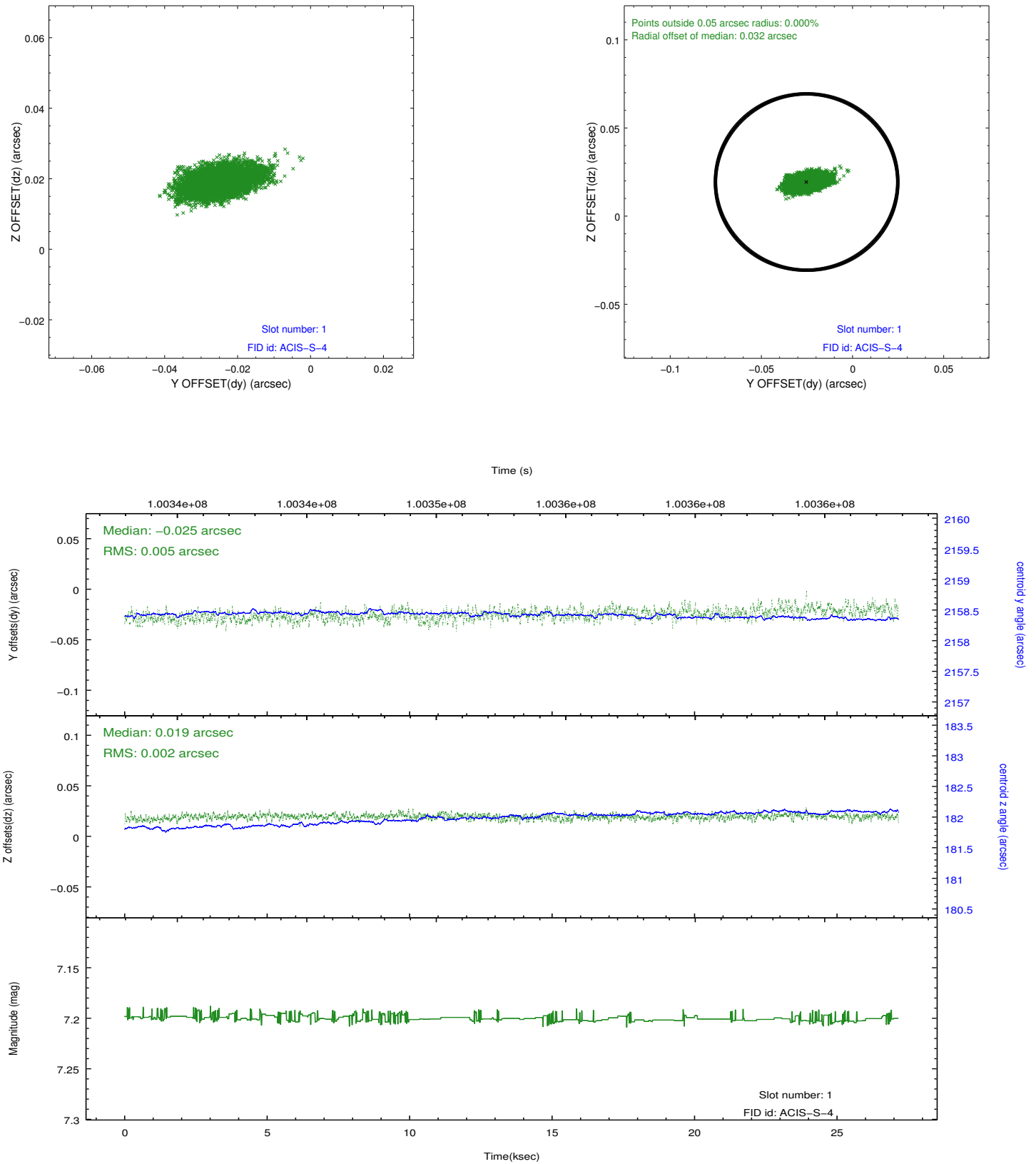


2.5 FID Slots

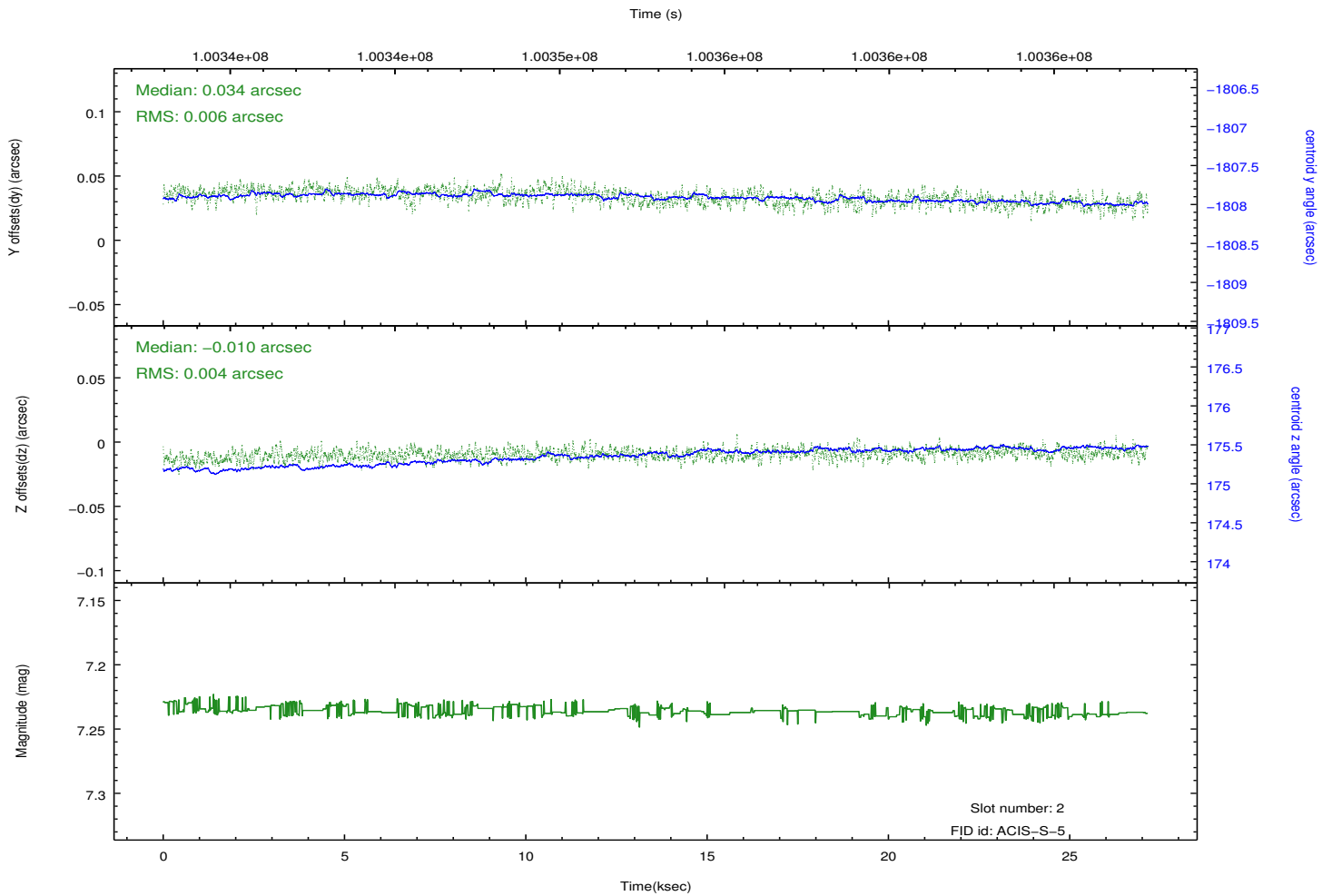
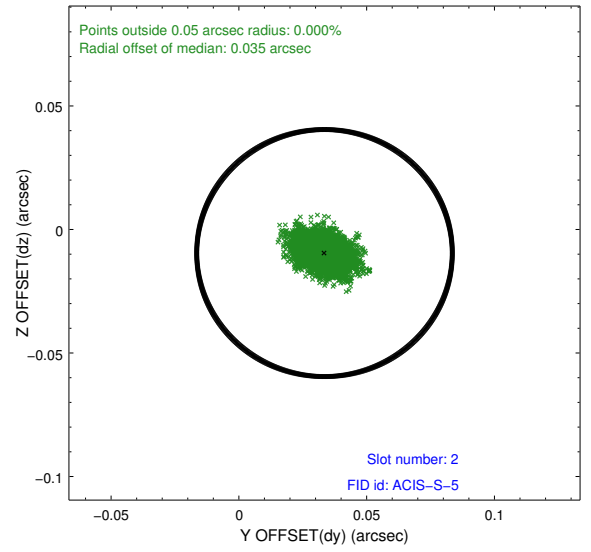
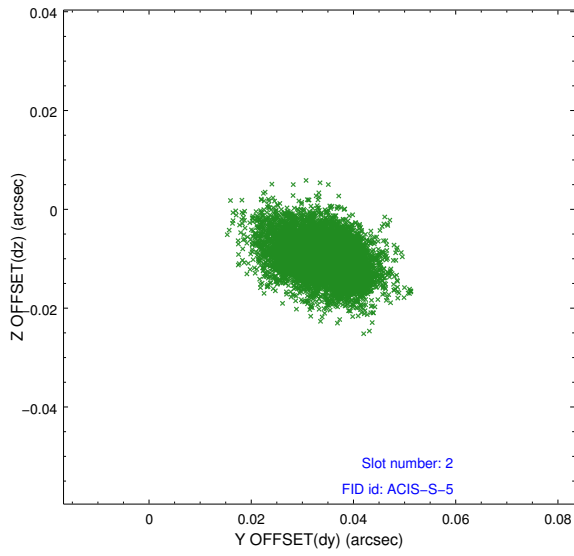
2.5.1 Slot 0



2.5.2 Slot 1



2.5.3 Slot 2



A Summary

A.1 Status

V&V Scientist	Jen Lauer
V&V Date (YYYY-MM-DD)	2012.09.17
V&V Edition	1
V&V Disposition and Status	OK
V&V Charge Time	26.918

A.2 Comments

Roll constraint technically not met: requested 195 +/- 5, actual 200.17 degrees.