

V&V Reference Report

L2 ASCDS Version : 8.4.5

Observation 2058 - L2 Version 3
Chandra X-Ray Center

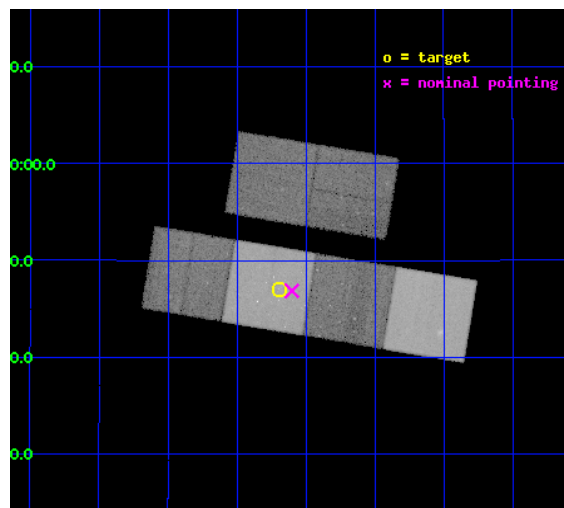
L2 Processing Date : Sep 26 2012

Contents

1	Front	2
2	OBI	3
2.1	OBI	3
2.1.1	Images	3
2.1.2	Bias	3
2.1.3	Parameters	4
2.1.4	Events	4
2.2	Compared Parameters	5
2.3	Aspect	6
2.4	Star Slots	9
2.4.1	Slot 3	9
2.4.2	Slot 4	10
2.4.3	Slot 5	11
2.4.4	Slot 6	12
2.4.5	Slot 7	13
2.5	FID Slots	14
2.5.1	Slot 0	14
2.5.2	Slot 1	15
2.5.3	Slot 2	16
A	Summary	17
A.1	Status	17
A.2	Comments	17

1 Front

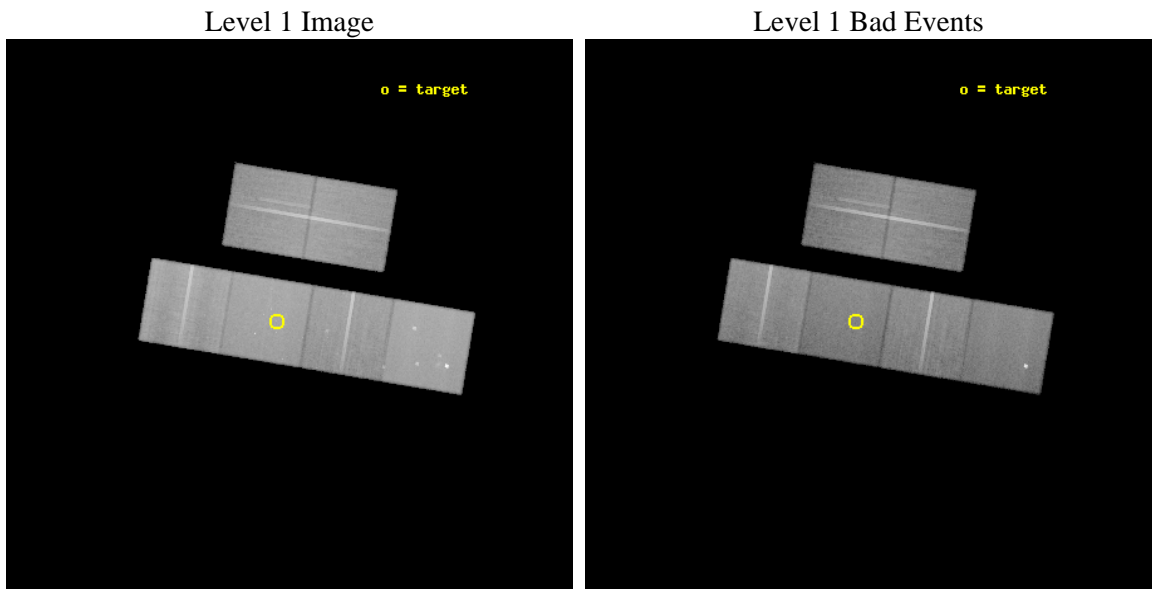
seq_num	600192	Sequence number
obs_id	2058	Observation id
title	THE X-RAY POINT SOURCE POPULATION IN SPIRAL GALAXIES	Proposal titl
observer	Dr Andrea Prestwich	Principal investigator
object	NGC 628	Source name
dtycycle	0	
cycle	P	events from which exps? Prim/Second/Both
ra_targ	24.17375	Observer's specified target RA [deg]
dec_targ	15.783056	Observer's specified target Dec [deg]
ra_nom	24.150470878355	Nominal RA [deg]
dec_nom	15.781108332289	Nominal Dec [deg]
roll_nom	189.47383189194	Nominal Roll [deg]
revision	3	Processing version of data
ontime	46758.400043532	Sum of GTIs [s]
livetime	46166.317027653	Livetime [s]
ontime2	46758.400043532	Sum of GTIs [s]
ontime3	46758.400043532	Sum of GTIs [s]
ontime5	46758.400043532	Sum of GTIs [s]
ontime6	46755.159043357	Sum of GTIs [s]
ontime7	46758.400043532	Sum of GTIs [s]
ontime8	46755.15906328	Sum of GTIs [s]
l2events	486813	Number of level 2 events



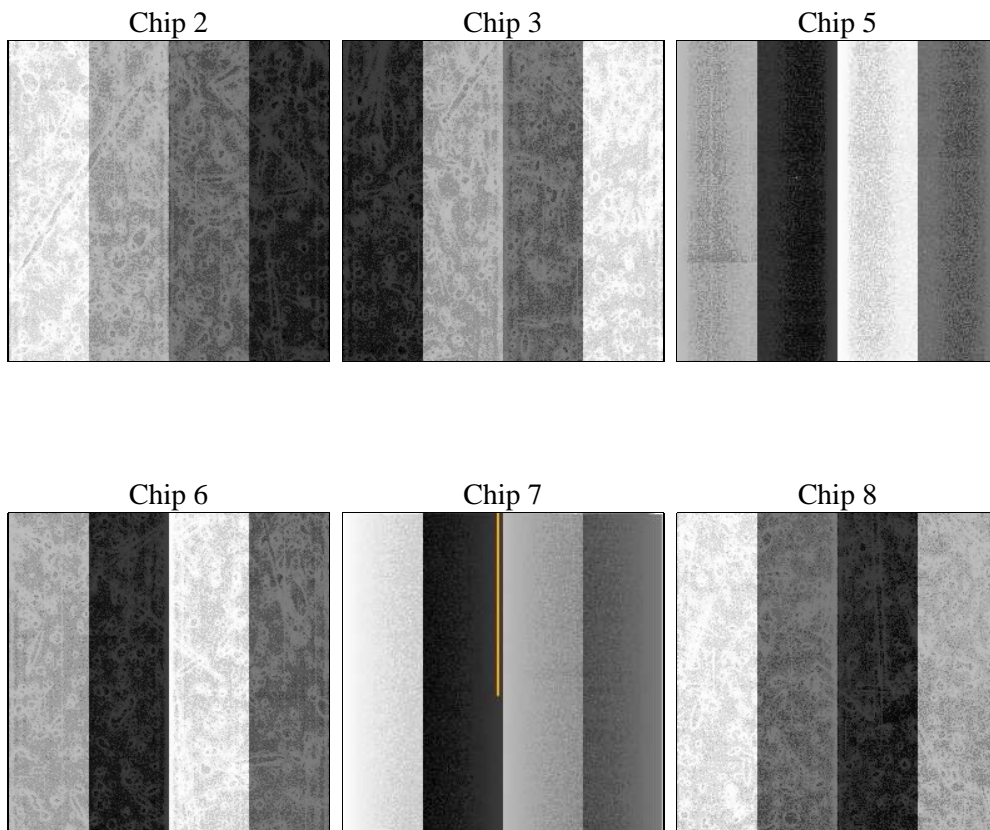
2 OBI

2.1 OBI

2.1.1 Images



2.1.2 Bias



2.1.3 Parameters

obi_num	3	Obi number	sched_exp_time	47000.000000	[s] Scheduled observation exposure time
ascdsver	8.4.5	Processing system revision	ontime	46758.400043532	Sum of GTIs [s]
caldbver	4.5.1.1	 	ontime2	46758.400043532	Sum of GTIs [s]
date	2012-09-26T01:26:14	Date and time of file creation	ontime3	46758.400043532	Sum of GTIs [s]
revision	3	Processing version of data	ontime5	46758.400043532	Sum of GTIs [s]
			ontime6	46755.159043357	Sum of GTIs [s]
			ontime7	46758.400043532	Sum of GTIs [s]
			ontime8	46755.15906328	Sum of GTIs [s]
			l1events	2238489	Number of level 1 events

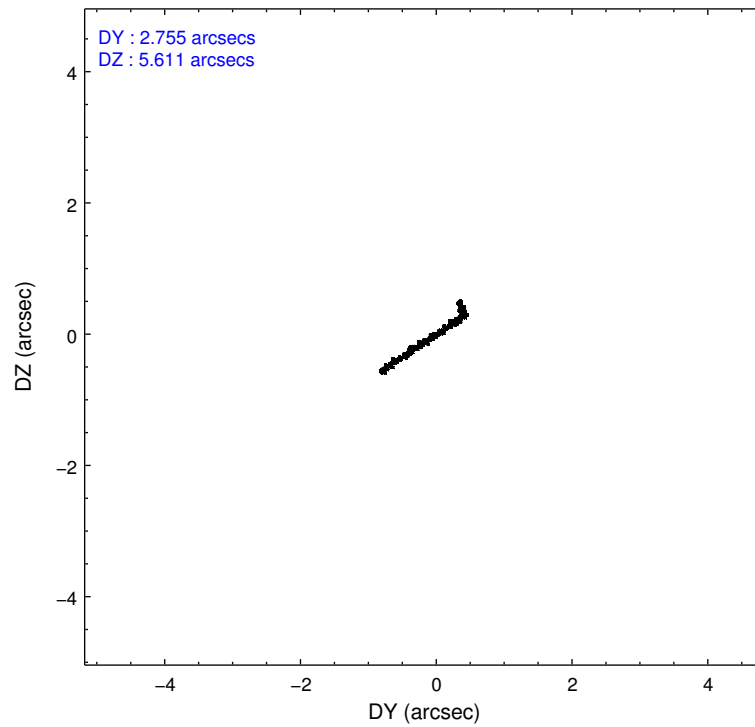
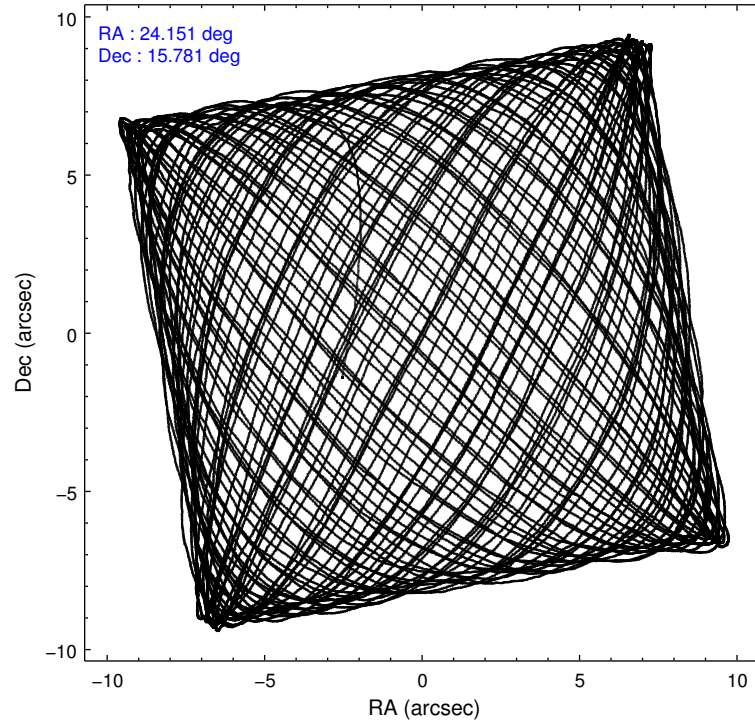
2.1.4 Events

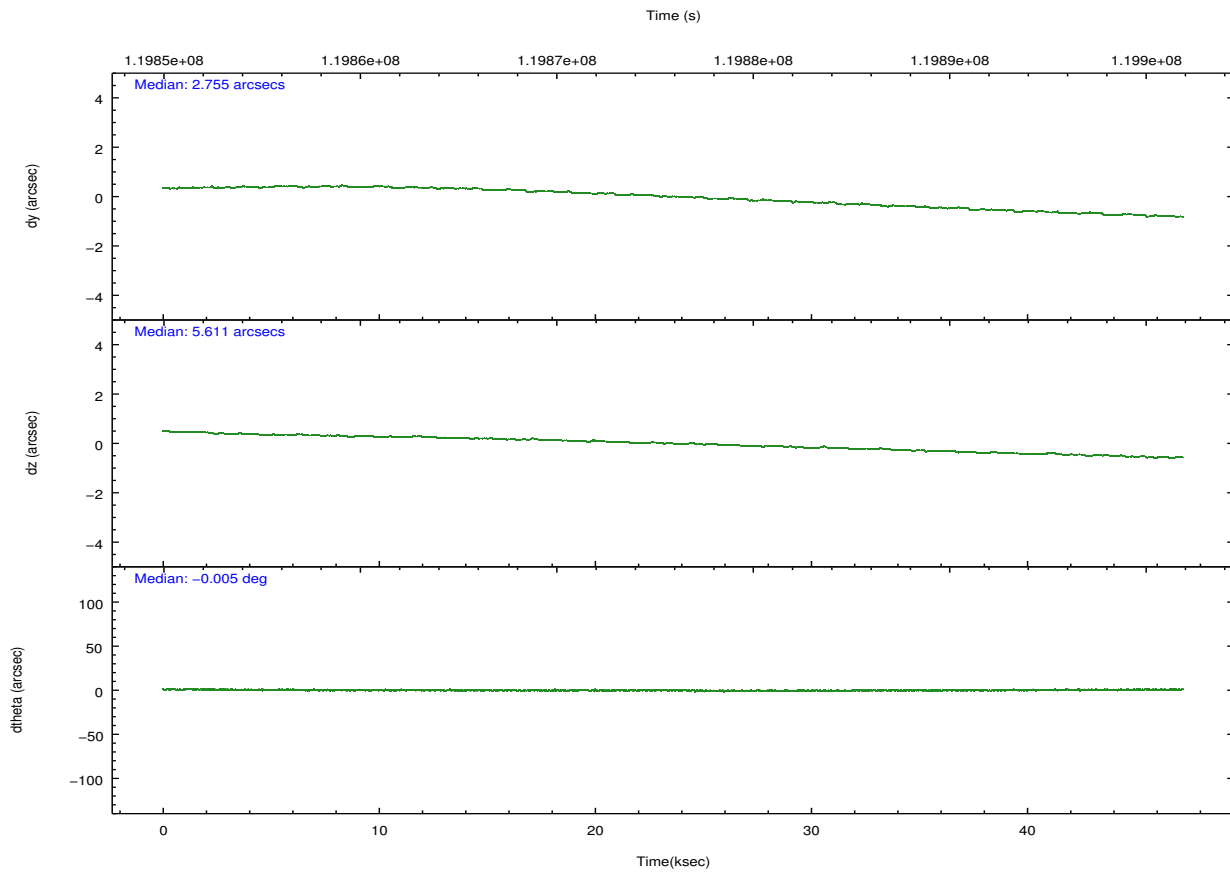
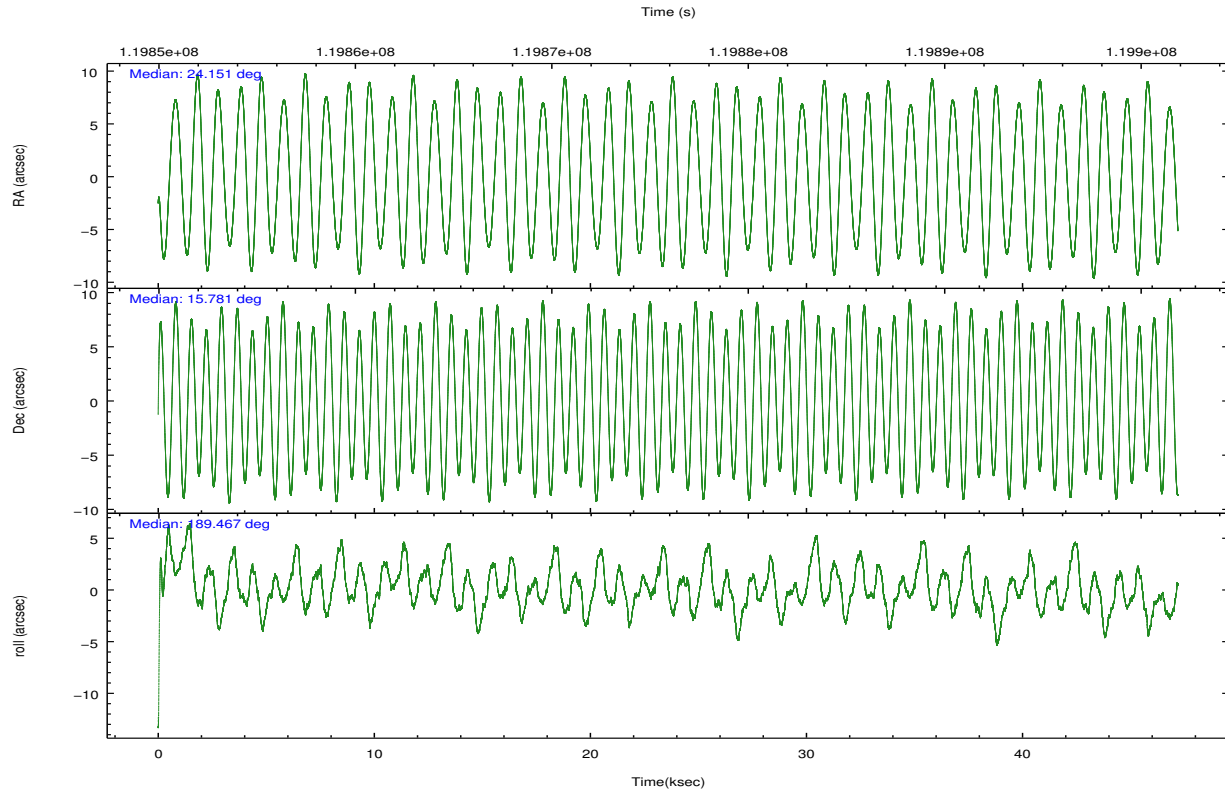
	ccd 2	ccd 3	ccd 5	ccd 6	ccd 7	ccd 8		ccd 2	ccd 3	ccd 5	ccd 6	ccd 7	ccd 8
level 1 events	337857	315465	440063	327333	397448	420323	grade 0 events	15233	16257	19478	16840	16972	31456
rejected events	301413	278752	238372	288167	227004	323152		4%	5%	4%	5%	4%	7%
rejected %	89%	88%	54%	88%	57%	76%	grade 1 events	149	143	571	152	378	272
								0%	0%	0%	0%	0%	0%
							grade 2 events	8084	7324	61456	7680	34376	19795
								2%	2%	13%	2%	8%	4%
							grade 3 events	3376	3402	9771	3743	15426	11555
								0%	1%	2%	1%	3%	2%
							grade 4 events	3418	3484	8217	3648	14971	10628
								1%	1%	1%	1%	3%	2%
							grade 5 events	10477	11432	35514	12696	37052	16043
								3%	3%	8%	3%	9%	3%
							grade 6 events	6337	6248	102777	7259	88710	23747
								1%	1%	23%	2%	22%	5%
							grade 7 events	290783	267175	202279	275315	189563	306827
								86%	84%	45%	84%	47%	72%

2.2 Compared Parameters

Parameter	Planned	Actual	Parameter	Planned	Actual
Instrument	ACIS	ACIS	Obspar format version number	7	7
Detector	ACIS-235678	ACIS-235678	Obspar file type	PREDICTED	ACTUAL
Grating	NONE	NONE	Obspar update status	NONE	UPDATED
Data mode	FAINT	FAINT	Number of optional ACIS chips dropped	0	0
Observation mode	POINTING	POINTING	On-chip summing requested	N	N
[deg] Pointing RA	24.172136	24.15047087835474	Subarray requested	NONE	NONE
[deg] Pointing Dec	15.798677	15.78110833228878	Alternating exposures requested	N	N
[deg] Pointing Roll	189.311313	189.4738318919405	[s] Primary exposure time	0.000000	3.2
[mm] SIM focus pos	-0.684267	-0.6828225247311905			
[mm] SIM defocus	0	0.001444936568705701			
[mm] SIM translation stage pos	-190.132523	-190.1400660498719			
[mm] SIM translation stage offset	0	0.00754346686406393			
[s] Observation start time (MET)	119852512.184000	119851710.607			
Observation start date	2001-10-19T04:20:48	2001-10-19T04:08:30			
[s] Observation end time (MET)	119899512.184000	119901049.49646			
Observation end date	2001-10-19T17:24:08	2001-10-19T17:50:49			
Read mode	TIMED	TIMED			

2.3 Aspect



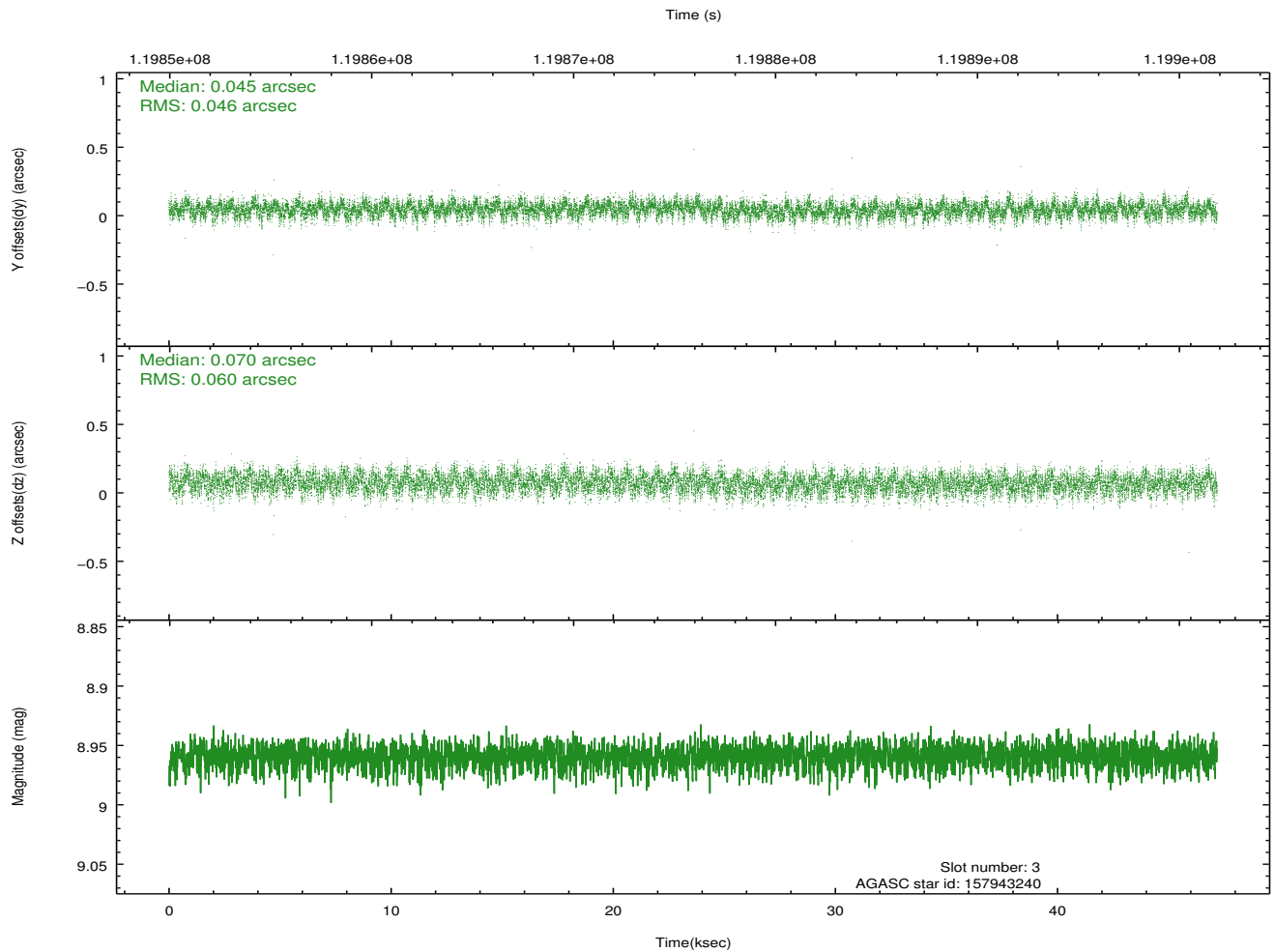
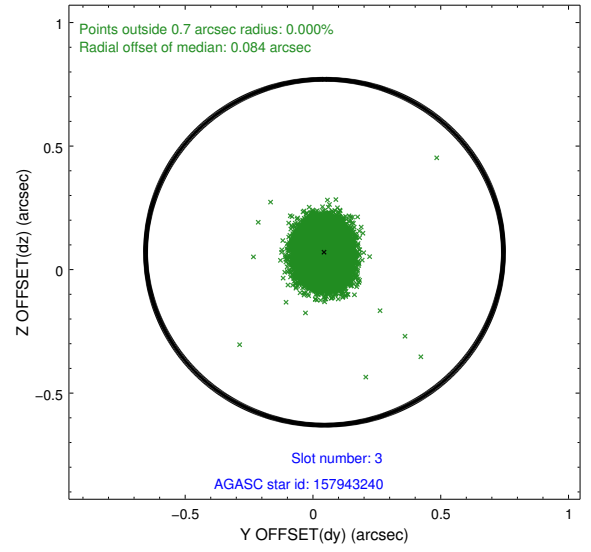
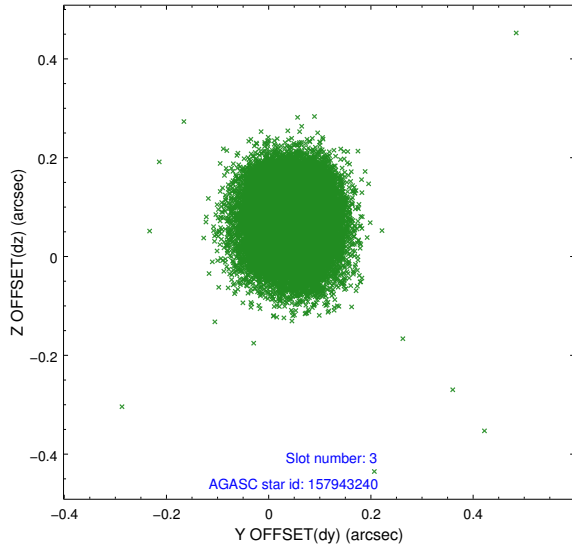


Slot Statistics

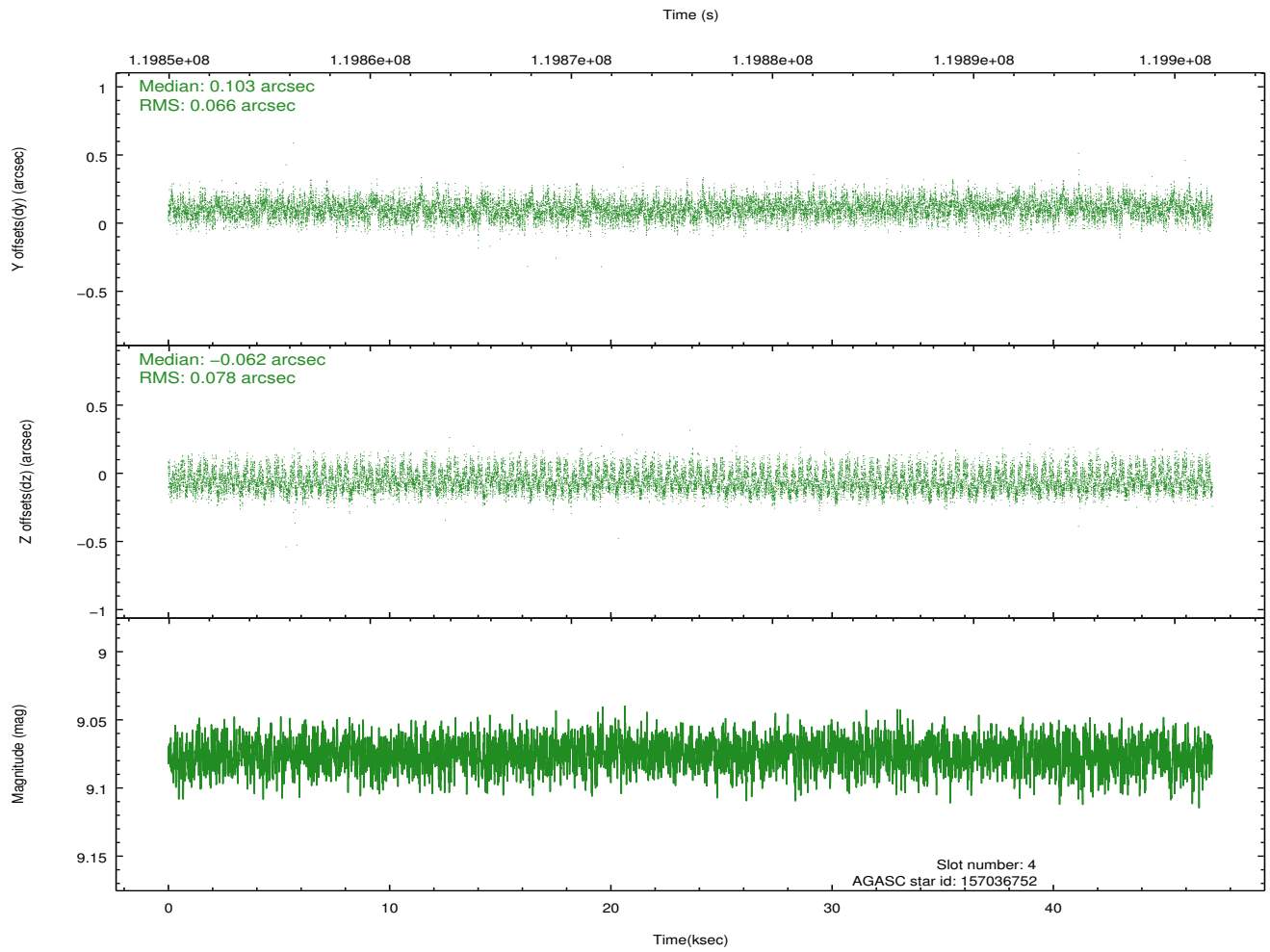
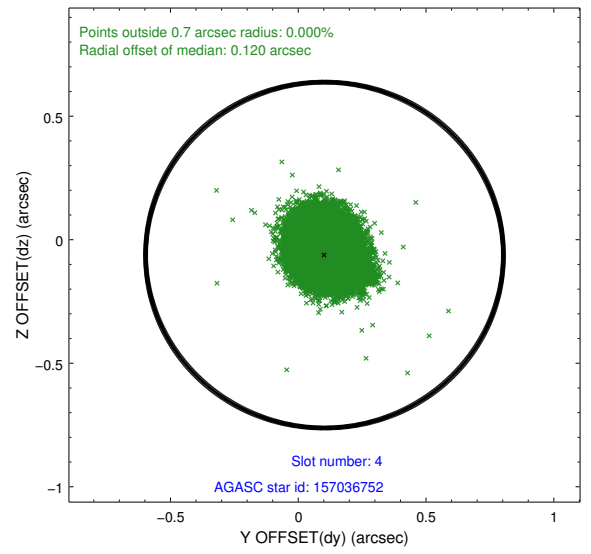
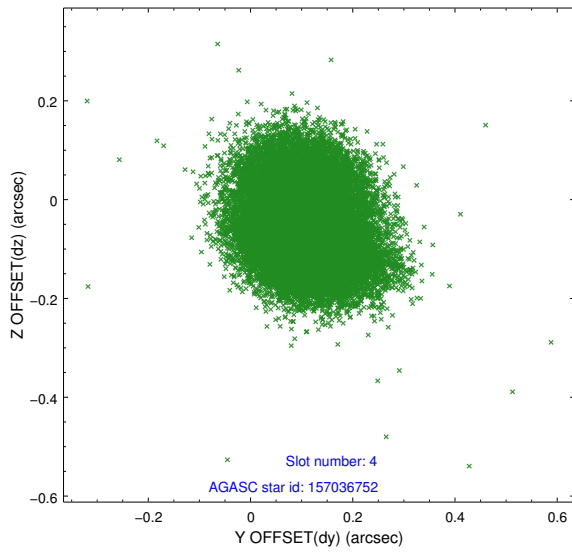
slot	status	id	mag	n_pts	med_dy	med_dz	dr1	dr2	ra	dec	mean_y	mean_z
0	FID	ACIS-S-2	7.11	11510	-0.038	0.002	0.013	0.019	0.000000	0.000000	-755.32	-1726.73
1	FID	ACIS-S-4	7.20	11511	-0.013	0.017	0.011	0.020	0.000000	0.000000	2157.94	181.85
2	FID	ACIS-S-5	7.24	11510	0.020	-0.010	0.009	0.015	0.000000	0.000000	-1808.16	175.39
3	GUIDE	157943240	8.96	23016	0.045	0.070	0.080	0.127	24.500363	16.361777	-1446.37	-1817.30
4	GUIDE	157036752	9.08	23012	0.103	-0.062	0.110	0.174	23.400830	16.130370	2438.97	-1613.95
5	GUIDE	157029352	9.02	23011	-0.014	-0.035	0.184	0.246	23.764744	15.271289	1703.44	1644.22
6	GUIDE	157953216	9.39	23006	-0.055	-0.083	0.111	0.171	24.189817	15.248642	259.97	1964.72
7	GUIDE	157036576	9.66	23001	-0.070	0.081	0.143	0.275	23.859578	16.337399	752.24	-2088.37

2.4 Star Slots

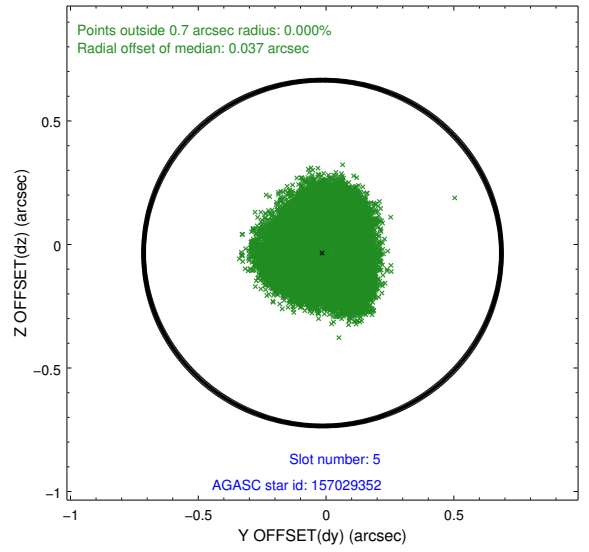
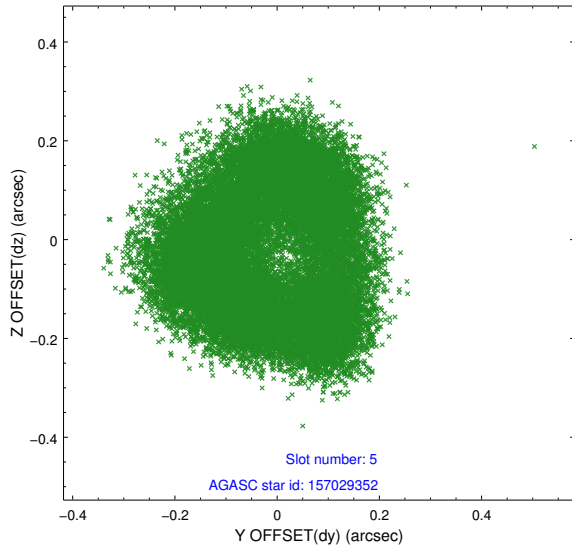
2.4.1 Slot 3



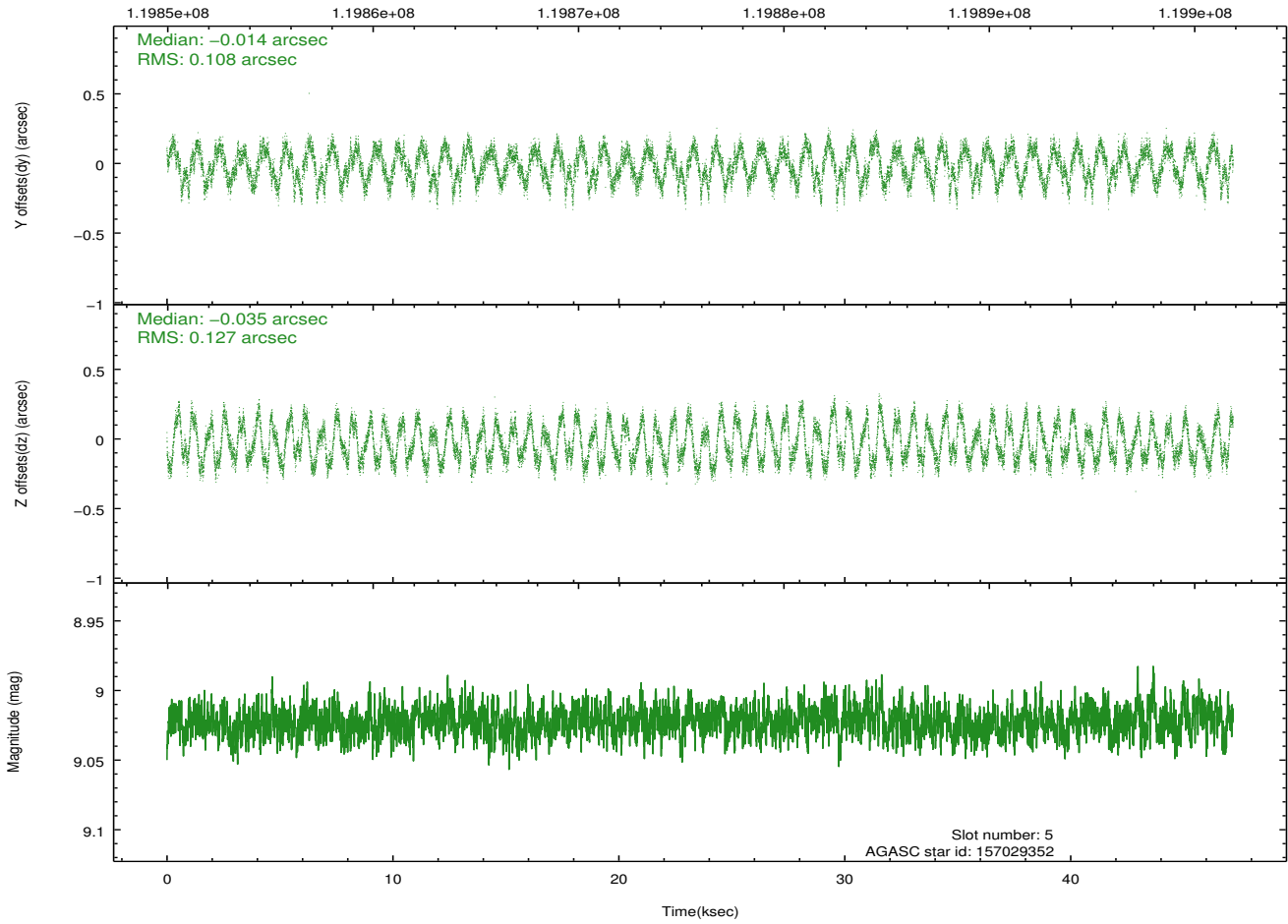
2.4.2 Slot 4



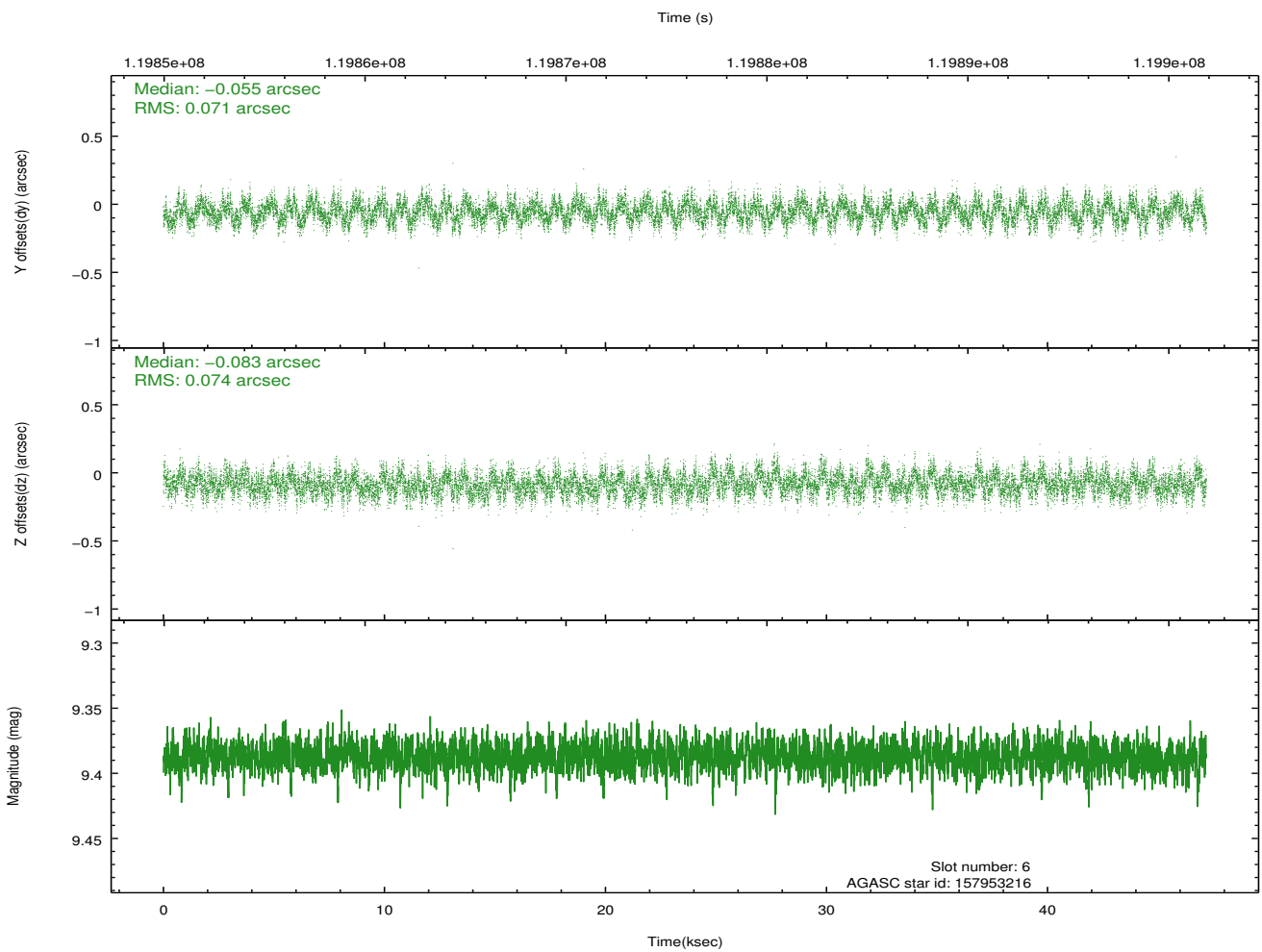
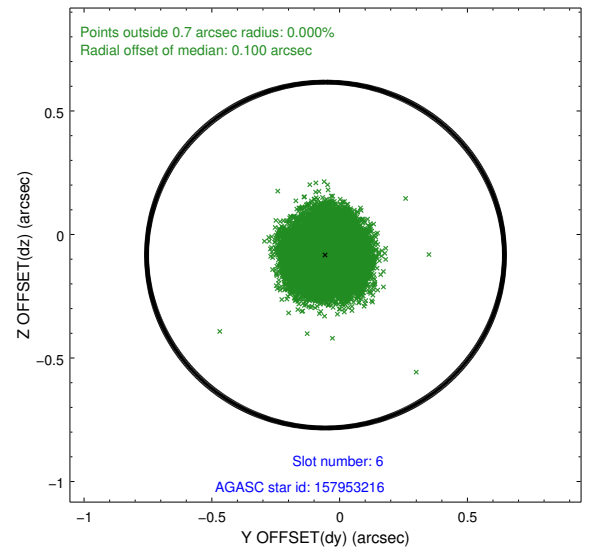
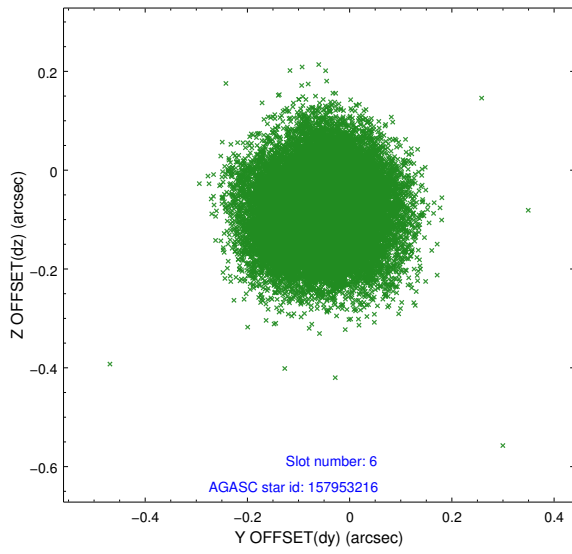
2.4.3 Slot 5



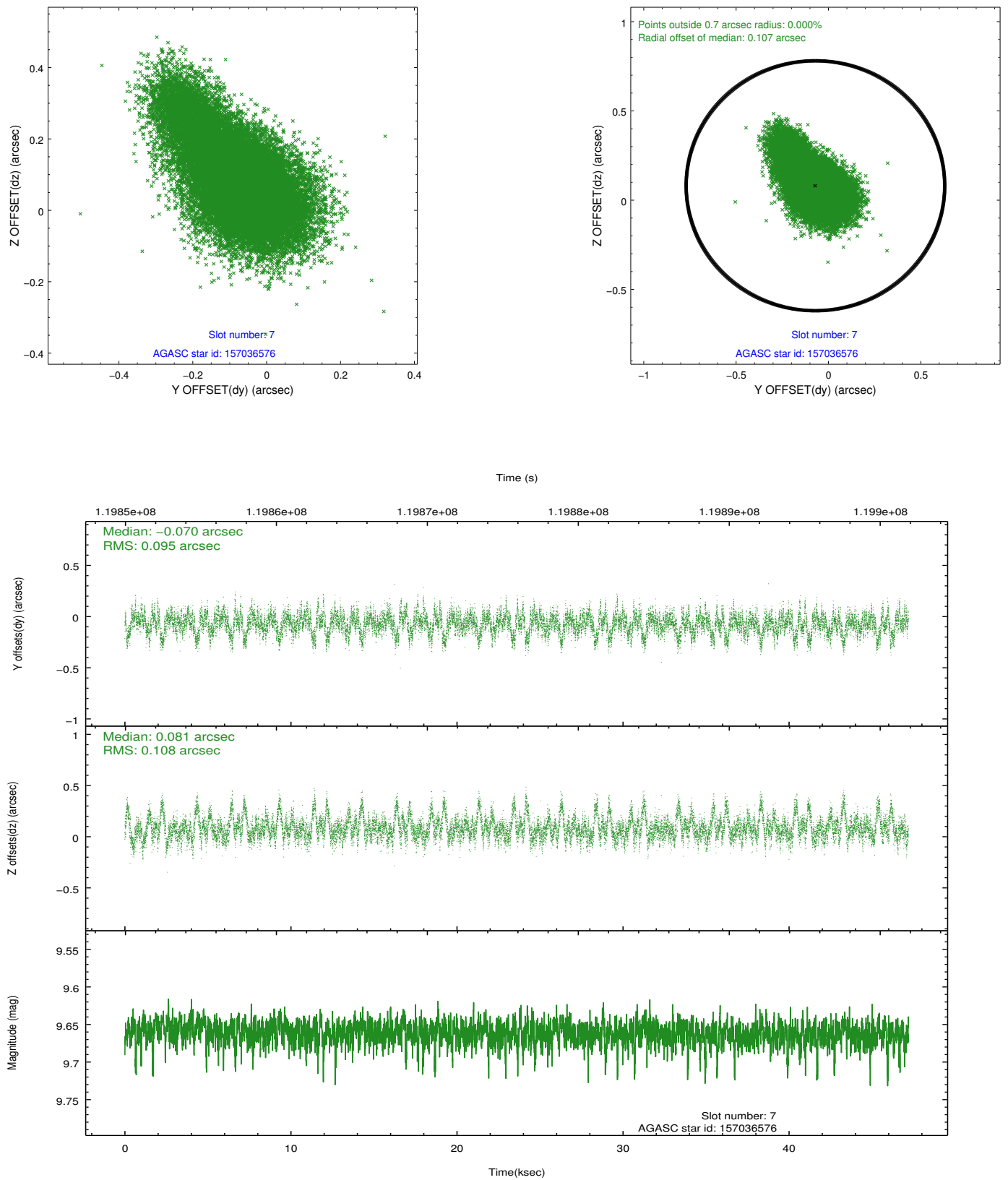
Time (s)



2.4.4 Slot 6

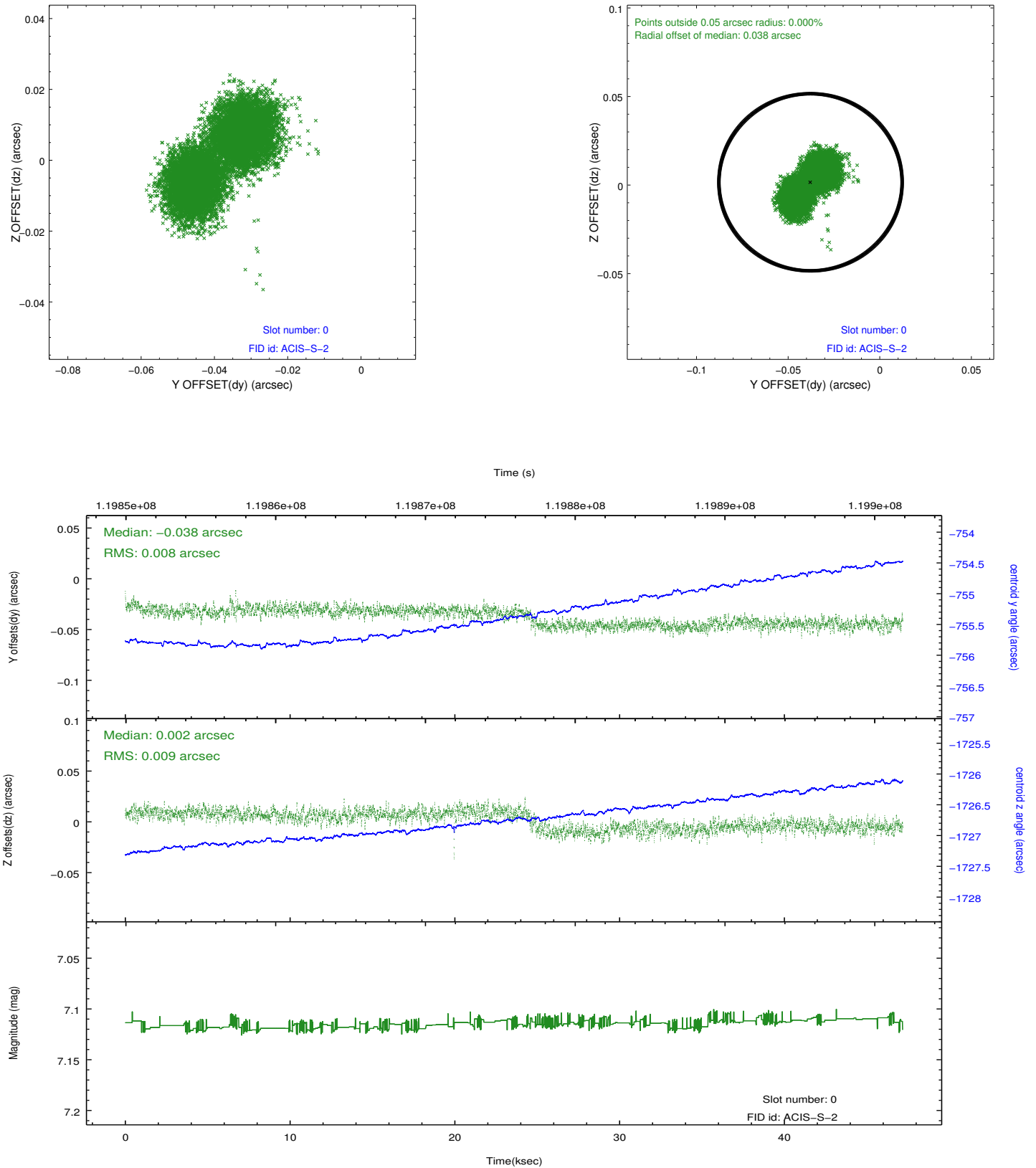


2.4.5 Slot 7

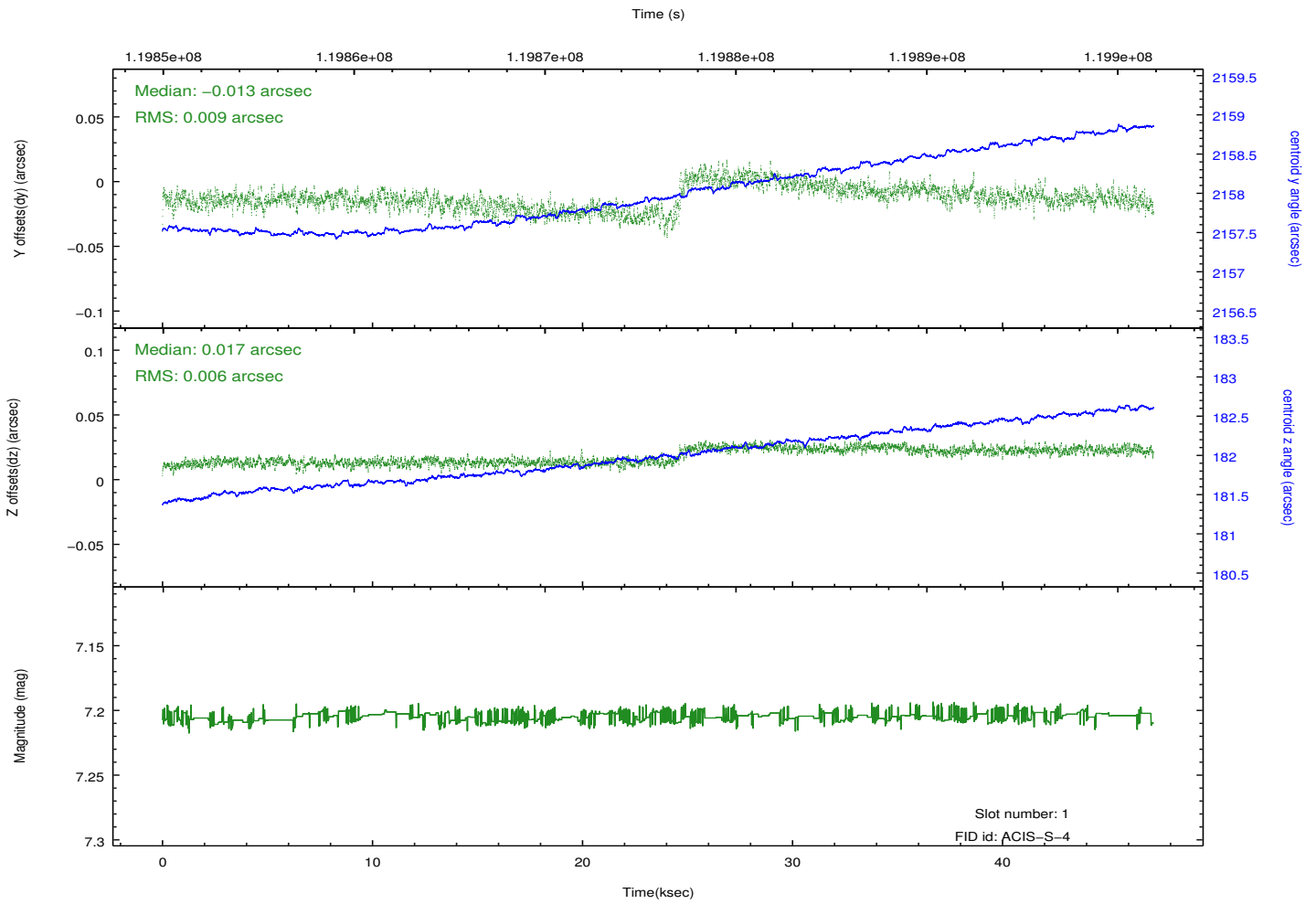
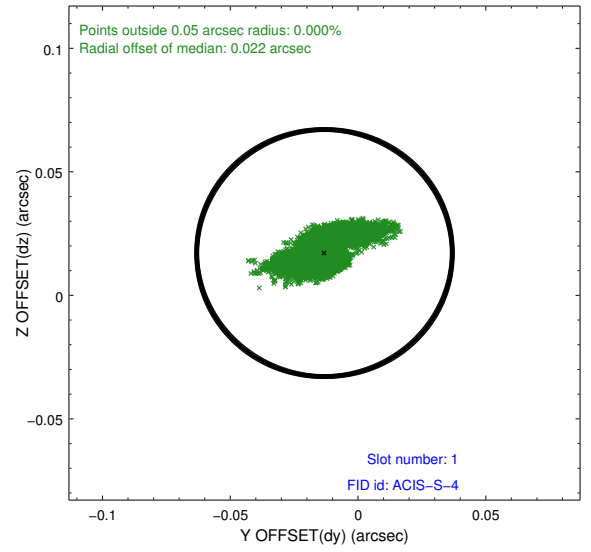
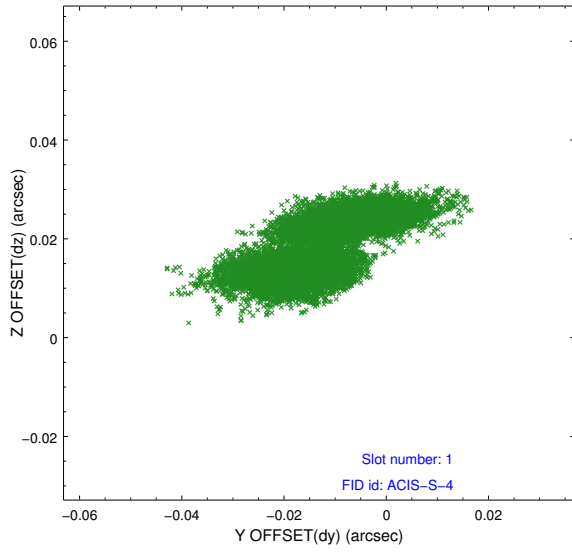


2.5 FID Slots

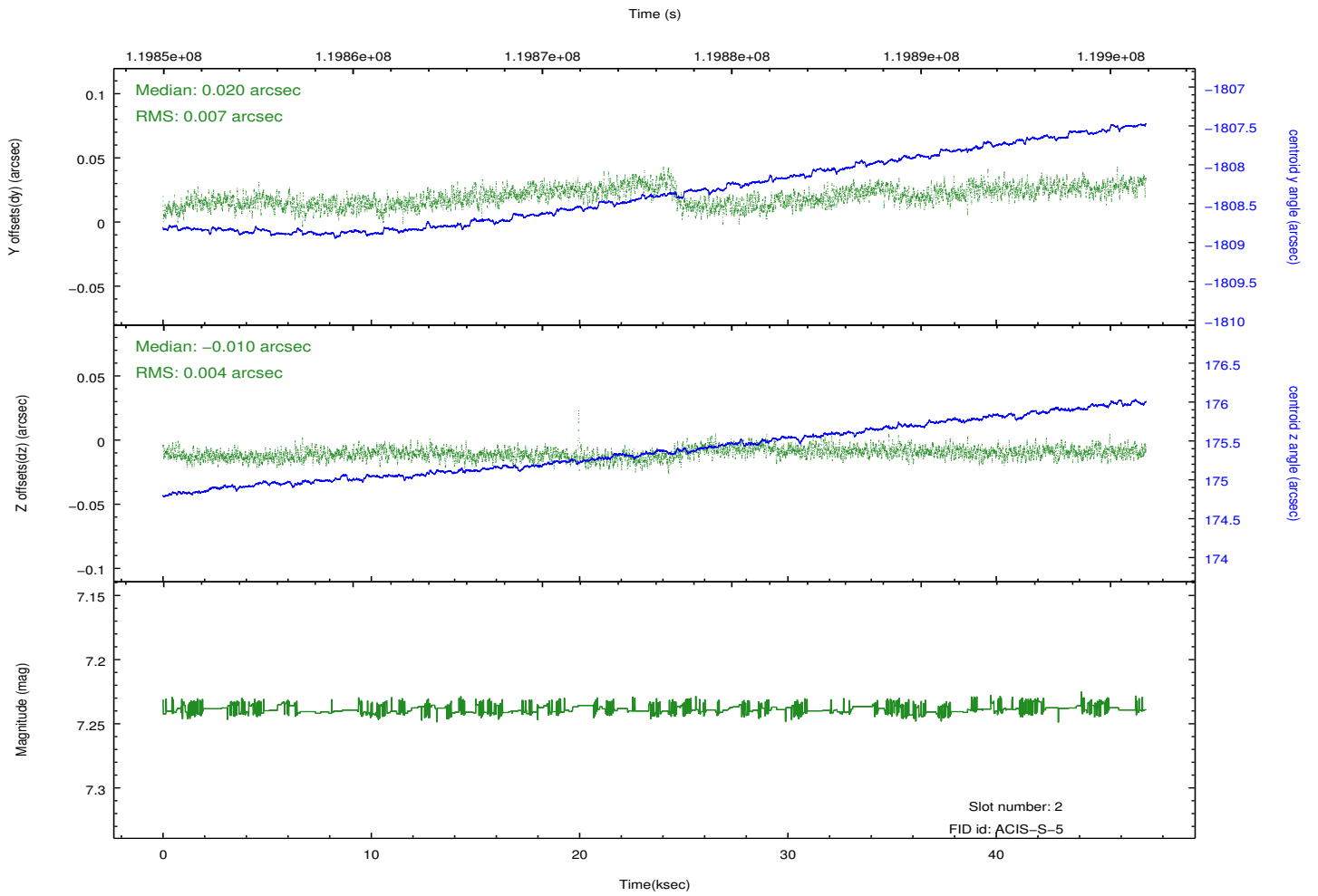
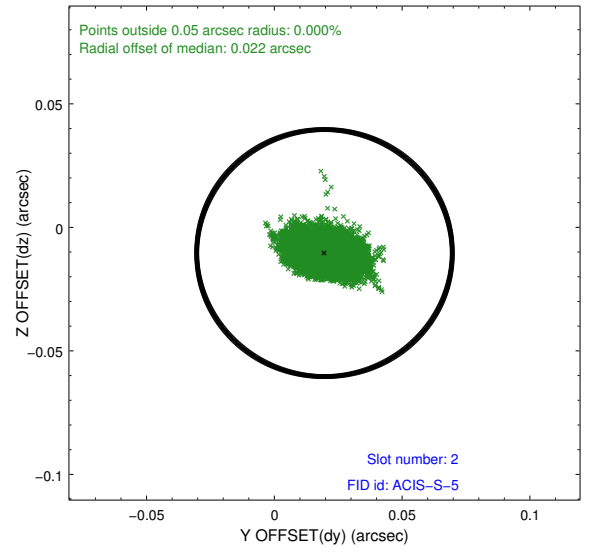
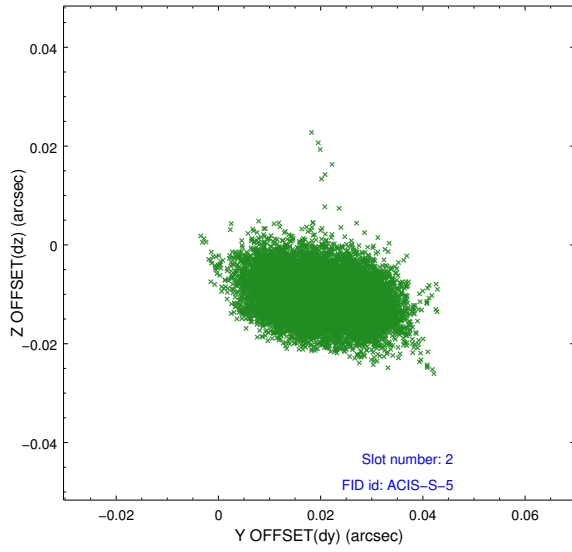
2.5.1 Slot 0



2.5.2 Slot 1



2.5.3 Slot 2



A Summary

A.1 Status

V&V Scientist	Jen Lauer
V&V Date (YYYY-MM-DD)	2012.09.27
V&V Edition	1
V&V Disposition and Status	OK
V&V Charge Time	46.761

A.2 Comments

Monitor constraint met.