

V&V Reference Report

L2 ASCDS Version : 8.4.5

Observation 2068 - L2 Version 3
Chandra X-Ray Center

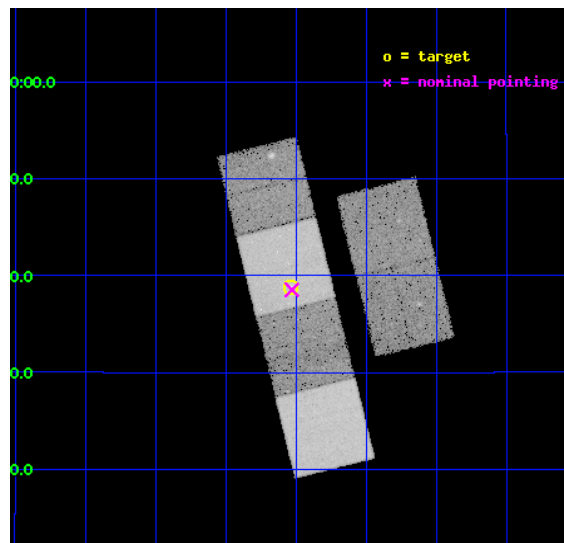
L2 Processing Date : Sep 21 2012

Contents

1	Front	2
2	OBI	3
2.1	OBI	3
2.1.1	Images	3
2.1.2	Bias	3
2.1.3	Parameters	4
2.1.4	Events	4
2.2	Compared Parameters	5
2.3	Aspect	6
2.4	Star Slots	9
2.4.1	Slot 3	9
2.4.2	Slot 4	10
2.4.3	Slot 5	11
2.4.4	Slot 6	12
2.4.5	Slot 7	13
2.5	FID Slots	14
2.5.1	Slot 0	14
2.5.2	Slot 1	15
2.5.3	Slot 2	16
A	Summary	17
A.1	Status	17
A.2	Comments	17

1 Front

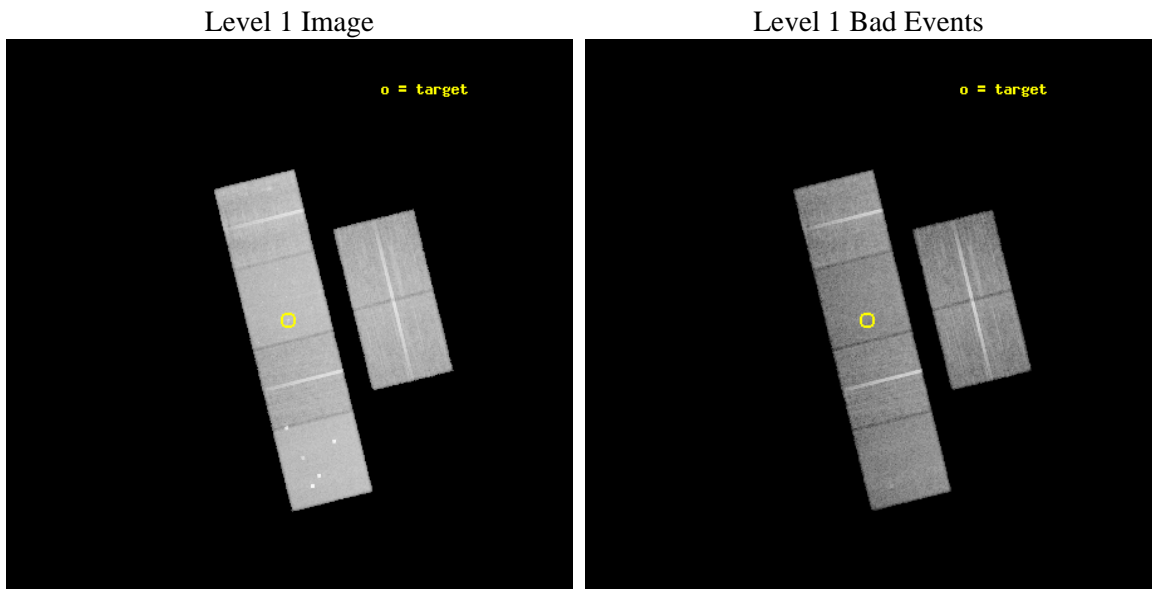
seq_num	600202	Sequence number
obs_id	2068	Observation id
title	CHANDRA OBSERVATIONS OF A DIFFERENT CLASS OF ELLIPTICAL GALAXIES	P
observer	Prof. Ann Zabludoff	Principal investigator
object	NGC 4621	Source name
dtcycle	0	
cycle	P	events from which exps? Prim/Second/Both
ra_targ	190.51	Observer's specified target RA [deg]
dec_targ	11.645861	Observer's specified target Dec [deg]
ra_nom	190.50729383124	Nominal RA [deg]
dec_nom	11.64228158347	Nominal Dec [deg]
roll_nom	256.11752504771	Nominal Roll [deg]
revision	3	Processing version of data
ontime	25155.118053079	Sum of GTIs [s]
livetime	24836.588801697	Livetime [s]
ontime2	25155.118083	Sum of GTIs [s]
ontime3	25155.118083	Sum of GTIs [s]
ontime5	25155.118083	Sum of GTIs [s]
ontime6	25151.877132758	Sum of GTIs [s]
ontime7	25155.118053079	Sum of GTIs [s]
ontime8	25151.877132758	Sum of GTIs [s]
l2events	267730	Number of level 2 events



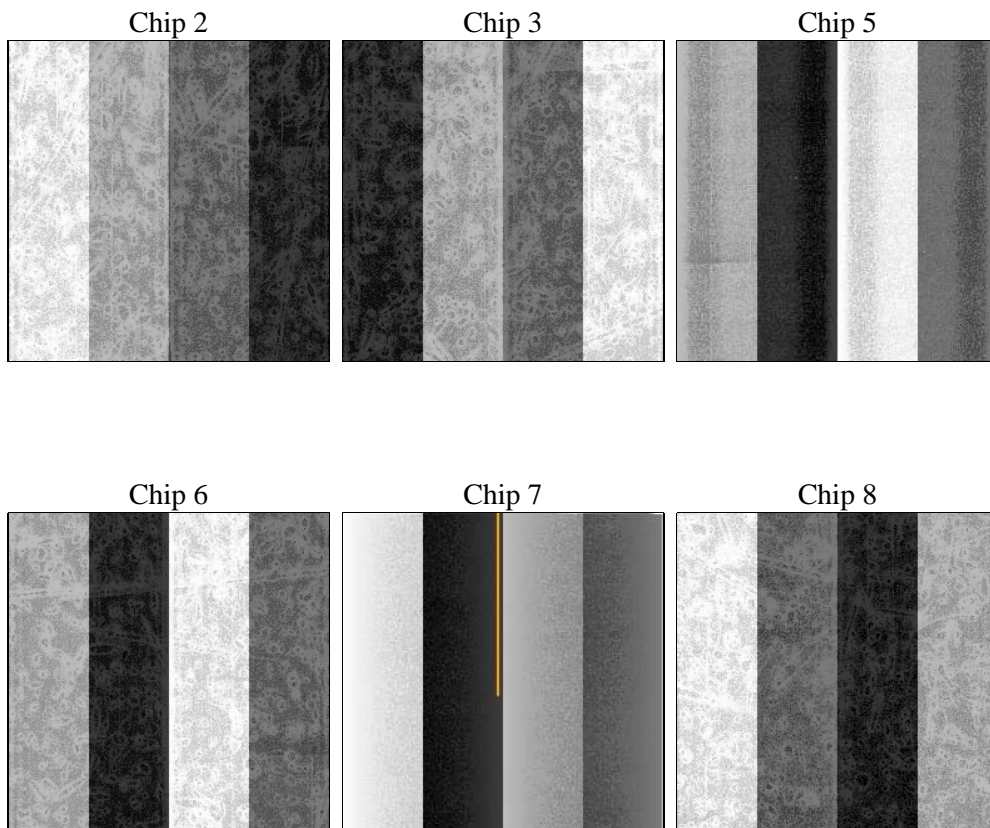
2 OBI

2.1 OBI

2.1.1 Images



2.1.2 Bias



2.1.3 Parameters

obi_num	0	Obi number	sched_exp_time	25000.000000	[s] Scheduled observation exposure time
ascdsver	8.4.5	Processing system revision	ontime	25155.118053079	Sum of GTIs [s]
caldbver	4.5.1.1	 	ontime2	25155.118083	Sum of GTIs [s]
date	2012-09-21T10:51:35	Date and time of file creation	ontime3	25155.118083	Sum of GTIs [s]
revision	3	Processing version of data	ontime5	25155.118083	Sum of GTIs [s]
			ontime6	25151.877132758	Sum of GTIs [s]
			ontime7	25155.118053079	Sum of GTIs [s]
			ontime8	25151.877132758	Sum of GTIs [s]
			l1events	1213059	Number of level 1 events

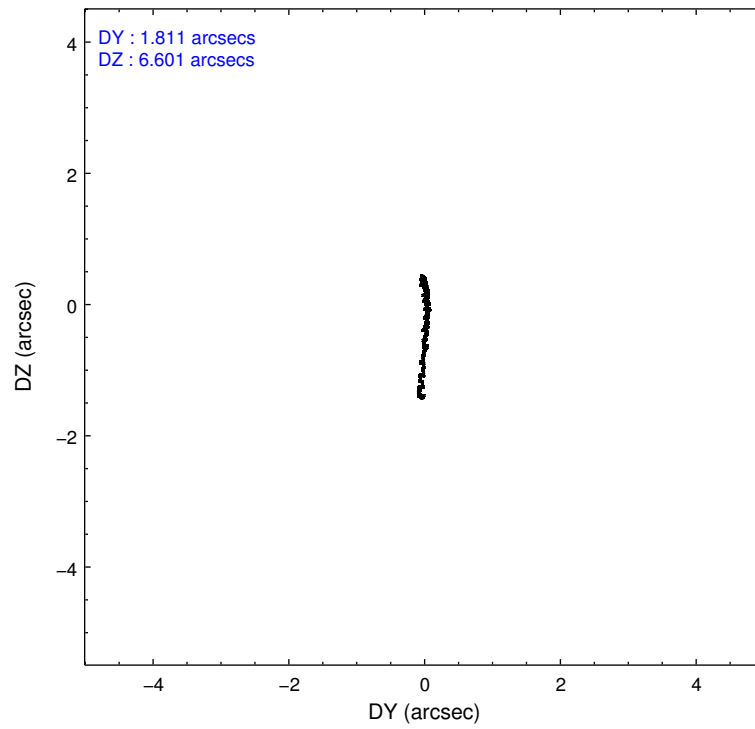
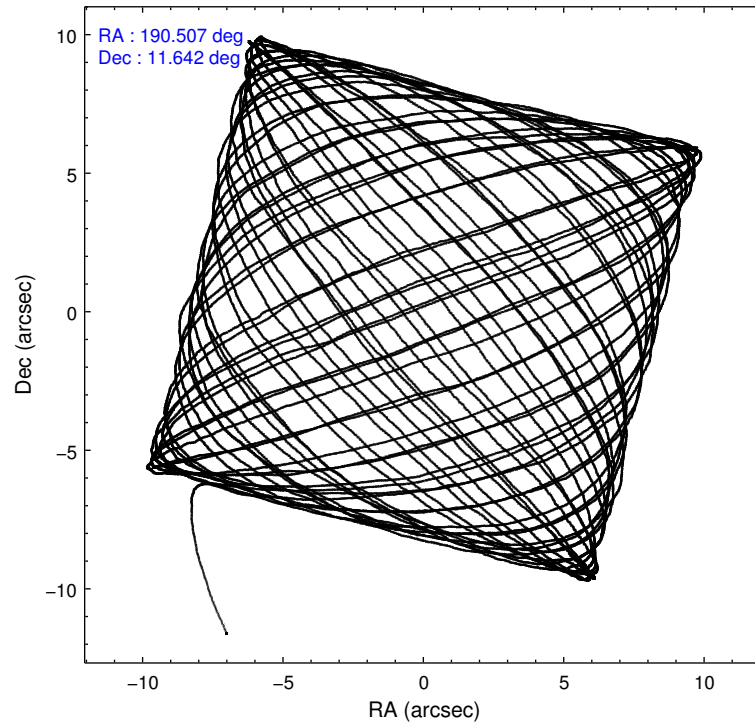
2.1.4 Events

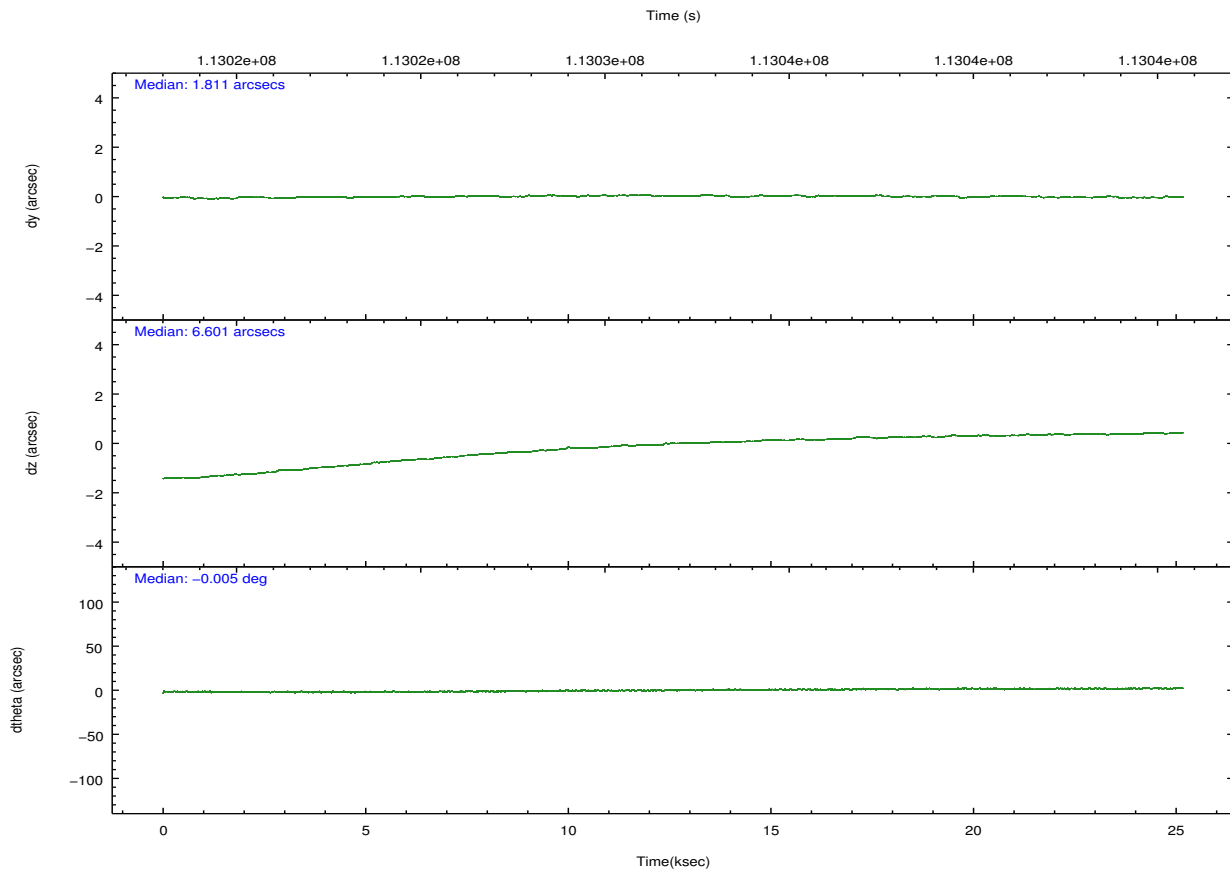
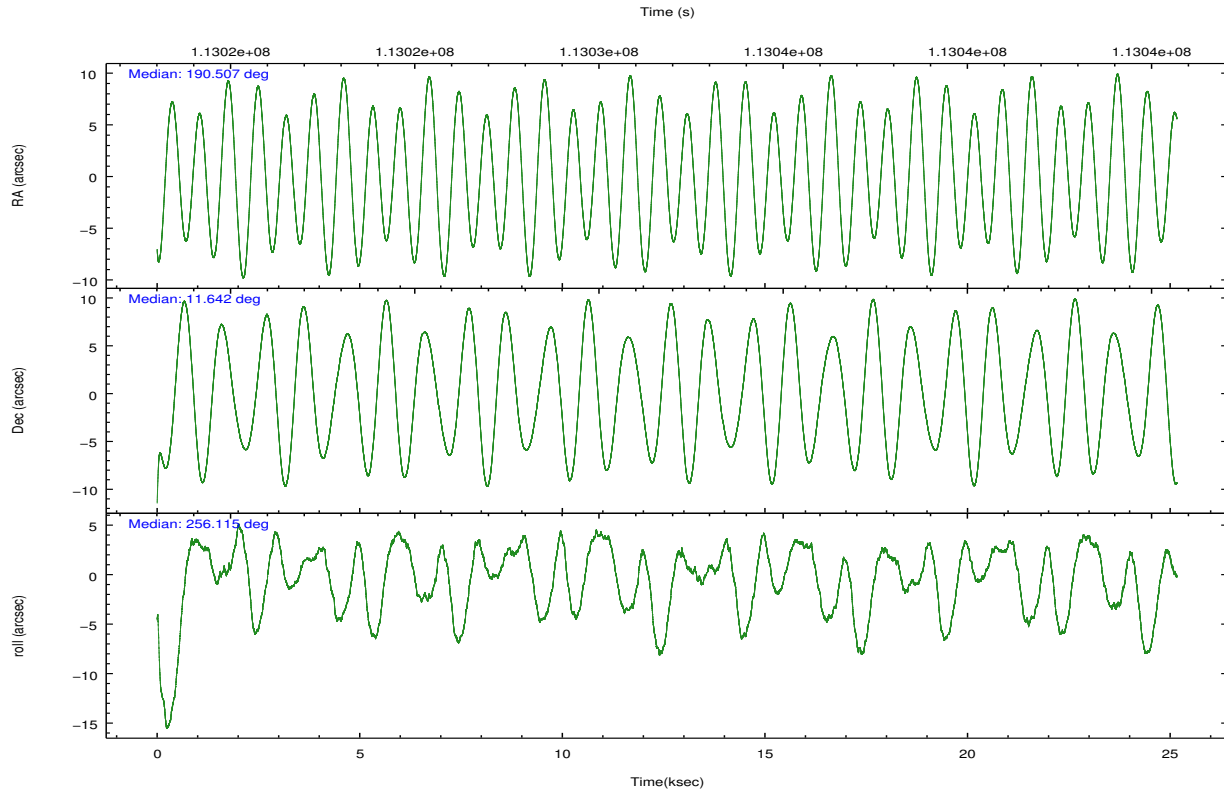
	ccd 2	ccd 3	ccd 5	ccd 6	ccd 7	ccd 8		ccd 2	ccd 3	ccd 5	ccd 6	ccd 7	ccd 8
level 1 events	177831	168340	247972	173843	222774	222299	grade 0 events	8762	8790	19082	8810	10049	16759
rejected events	157862	148226	131823	152846	129329	173428		4%	5%	7%	5%	4%	7%
rejected %	88%	88%	53%	87%	58%	78%	grade 1 events	102	76	484	79	218	127
								0%	0%	0%	0%	0%	0%
							grade 2 events	4322	4261	31772	4436	18850	9959
								2%	2%	12%	2%	8%	4%
							grade 3 events	1738	1833	4836	1970	8672	5604
								0%	1%	1%	1%	3%	2%
							grade 4 events	1829	1890	4596	1981	8513	5215
								1%	1%	1%	1%	3%	2%
							grade 5 events	5993	6475	18144	7061	20941	9159
								3%	3%	7%	4%	9%	4%
							grade 6 events	3523	3567	57202	4031	48343	11945
								1%	2%	23%	2%	21%	5%
							grade 7 events	151562	141448	111856	145475	107188	163531
								85%	84%	45%	83%	48%	73%

2.2 Compared Parameters

Parameter	Planned	Actual	Parameter	Planned	Actual
Instrument	ACIS	ACIS	Obspar format version number	7	7
Detector	ACIS-235678	ACIS-235678	Obspar file type	PREDICTED	ACTUAL
Grating	NONE	NONE	Obspar update status	NONE	UPDATED
Data mode	FAINT	FAINT	Number of optional ACIS chips dropped	0	0
Observation mode	POINTING	POINTING	On-chip summing requested	N	N
[deg] Pointing RA	190.499273	190.5072938312413	Subarray requested	NONE	NONE
[deg] Pointing Dec	11.668415	11.64228158346986	Alternating exposures requested	N	N
[deg] Pointing Roll	255.962521	256.1175250477098	[s] Primary exposure time	0.000000	3.2
[mm] SIM focus pos	-0.684267	-0.6828225247311905			
[mm] SIM defocus	0	0.001444936568705701			
[mm] SIM translation stage pos	-190.132523	-190.1425803651734			
[mm] SIM translation stage offset	0	0.01005778216563158			
[s] Observation start time (MET)	113019431.184000	113018227.01184			
Observation start date	2001-08-01T02:16:07	2001-08-01T01:57:07			
[s] Observation end time (MET)	113044431.184000	113045285.47541			
Observation end date	2001-08-01T09:12:47	2001-08-01T09:28:05			
Read mode	TIMED	TIMED			

2.3 Aspect



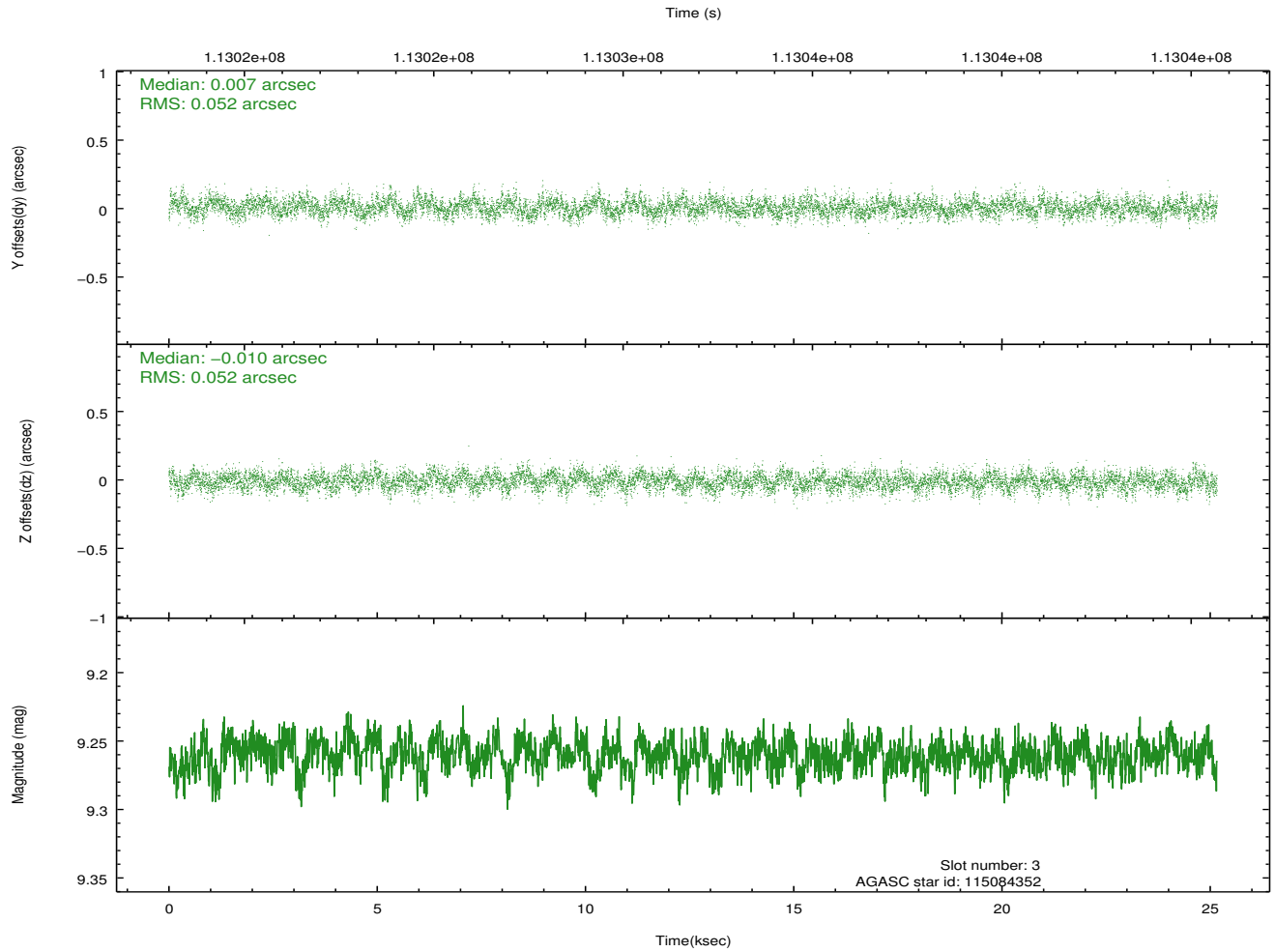
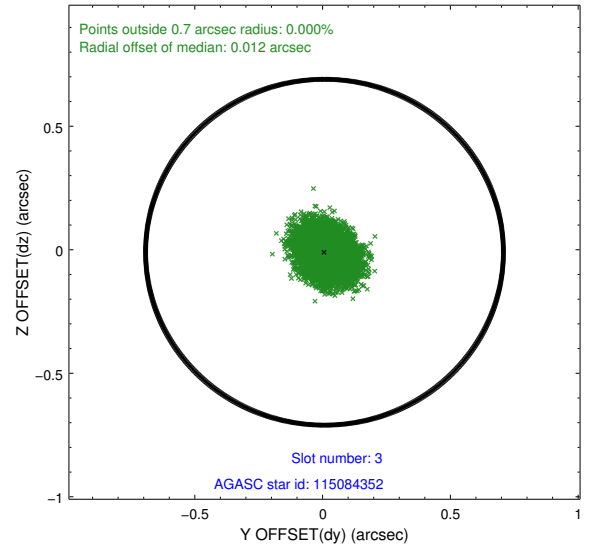
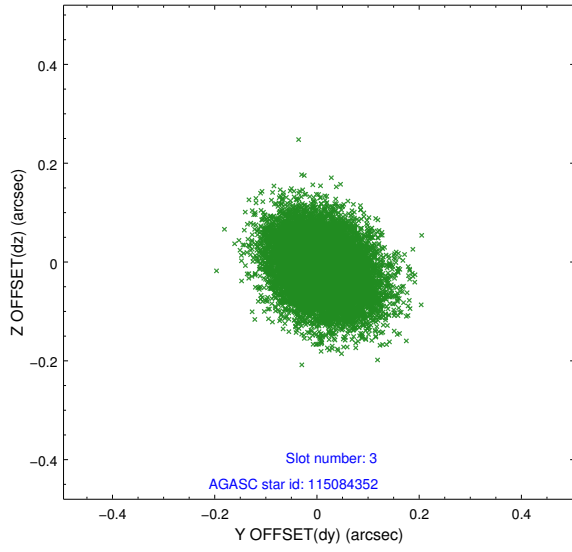


Slot Statistics

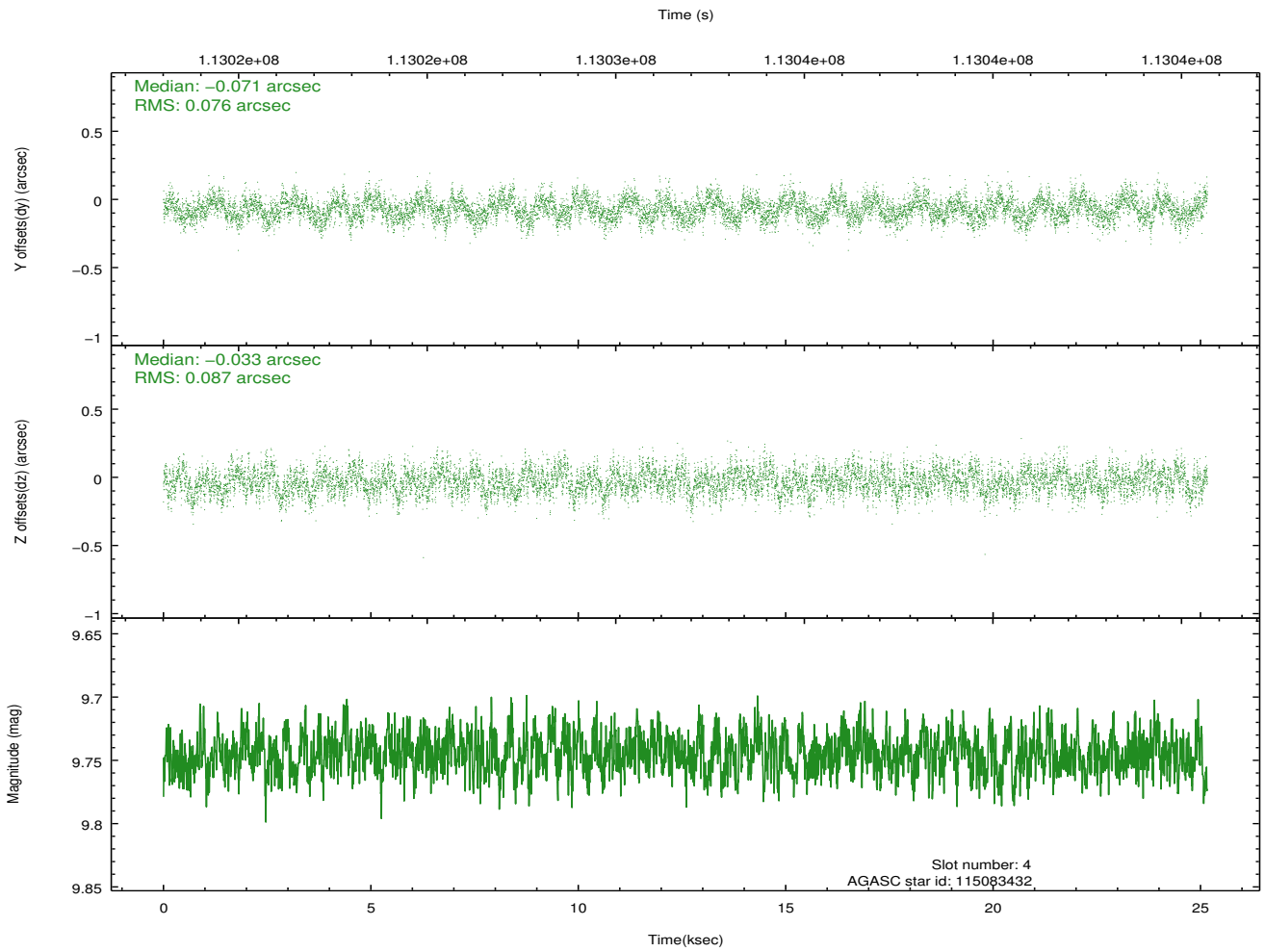
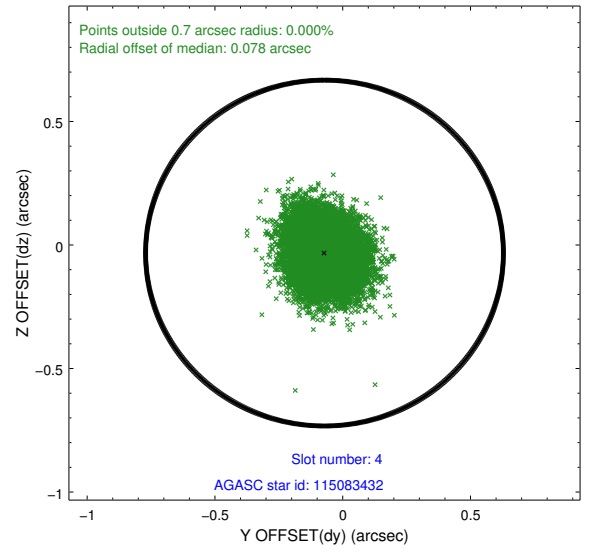
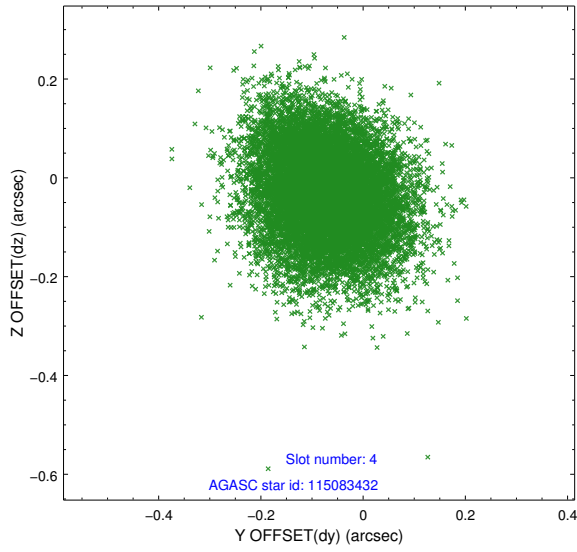
slot	status	id	mag	n_pts	med_dy	med_dz	dr1	dr2	ra	dec	mean_y	mean_z
0	FID	ACIS-S-2	7.11	6137	-0.032	0.001	0.011	0.016	0.000000	0.000000	-754.42	-1727.49
1	FID	ACIS-S-4	7.20	6137	-0.047	0.015	0.011	0.019	0.000000	0.000000	2158.76	180.93
2	FID	ACIS-S-5	7.24	6137	0.048	-0.008	0.008	0.013	0.000000	0.000000	-1807.06	174.65
3	GUIDE	115084352	9.26	12270	0.007	-0.010	0.078	0.128	190.760225	11.783180	-623.72	791.87
4	GUIDE	115083432	9.75	12259	-0.071	-0.033	0.123	0.196	190.888504	12.192141	-2162.04	871.23
5	GUIDE	115085728	10.04	12263	-0.167	-0.130	0.136	0.218	190.191864	12.341254	-2088.11	-1636.62
6	GUIDE	115084280	10.14	12256	-0.083	-0.048	0.113	0.183	190.781448	11.930338	-1156.15	735.20
7	GUIDE	115081808	8.89	12267	0.312	0.221	0.084	0.140	191.005561	10.921316	2174.23	2388.70

2.4 Star Slots

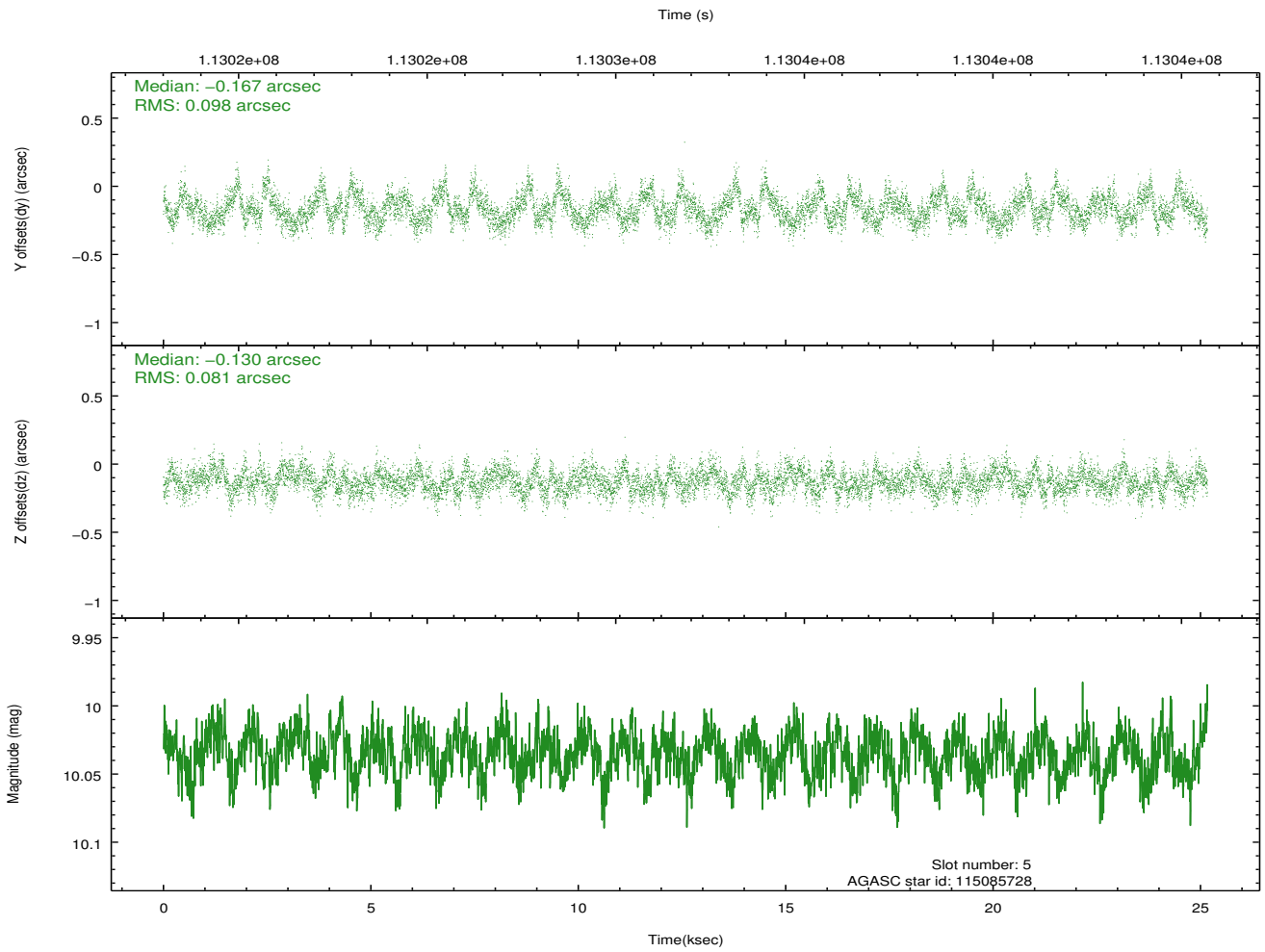
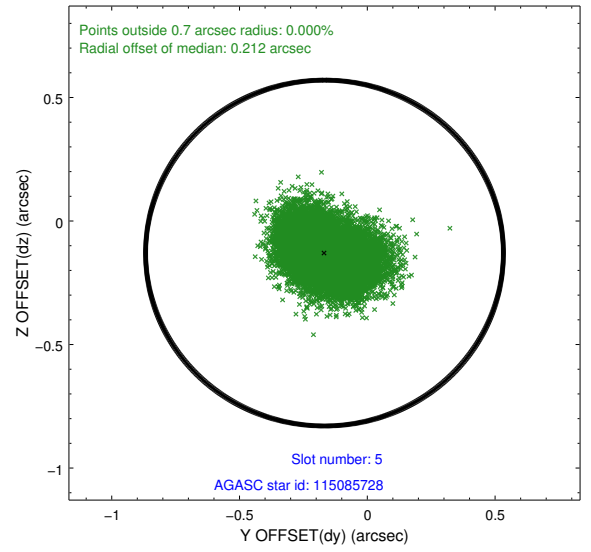
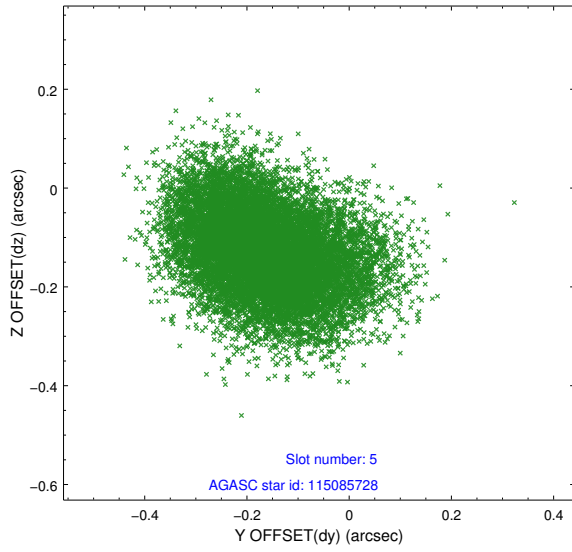
2.4.1 Slot 3



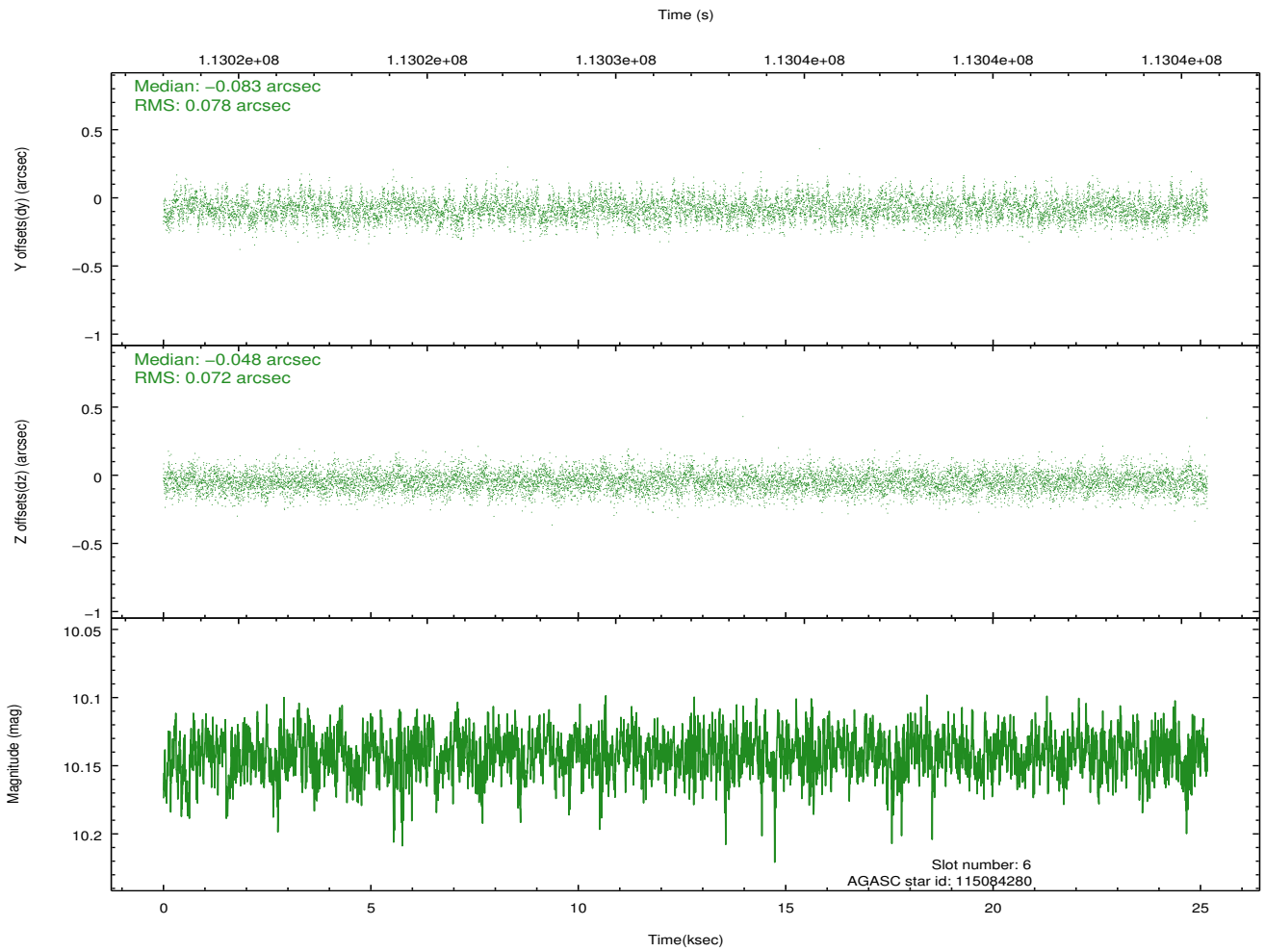
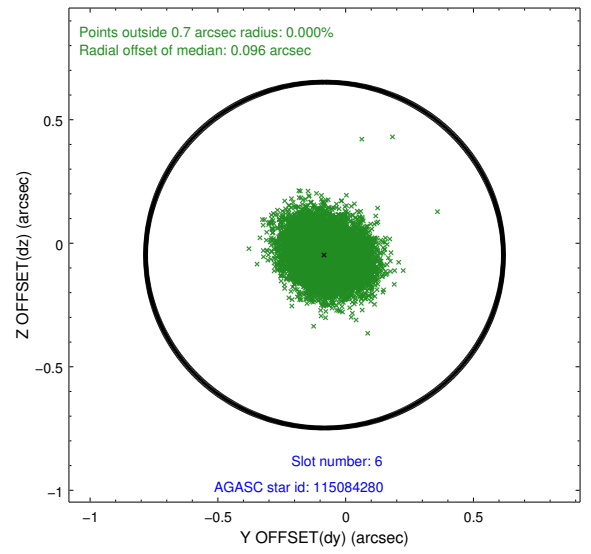
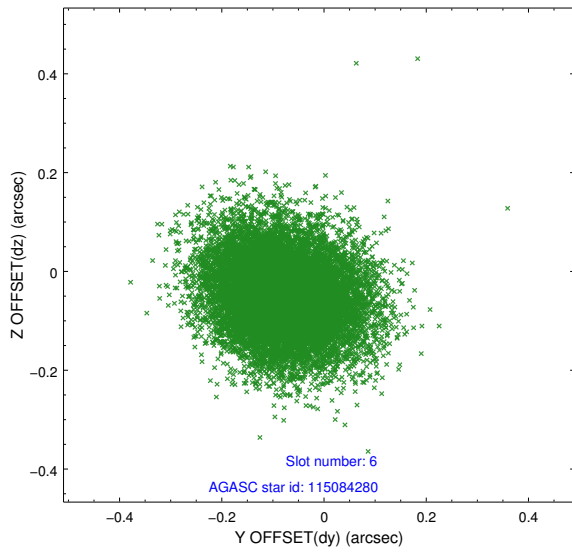
2.4.2 Slot 4



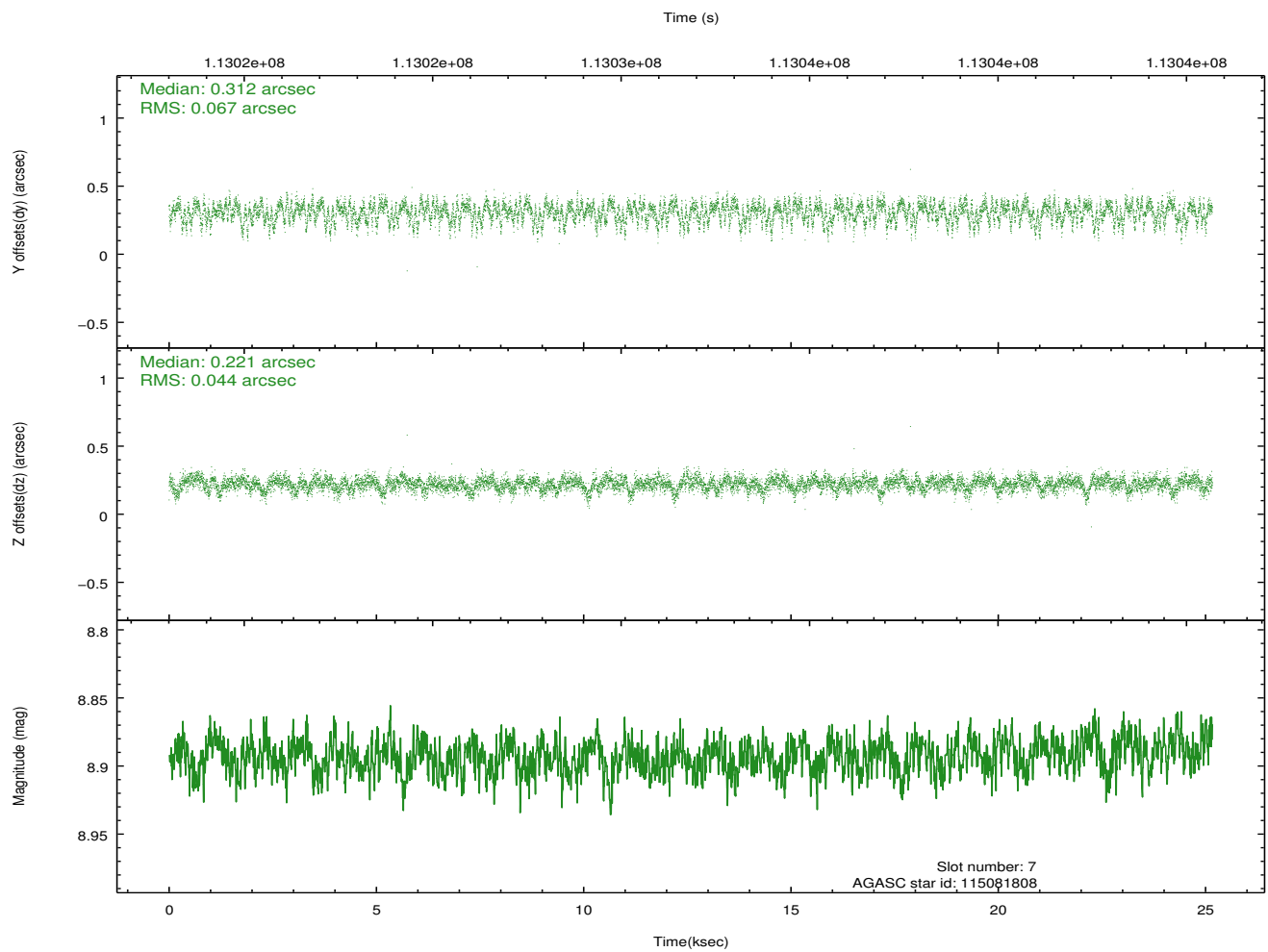
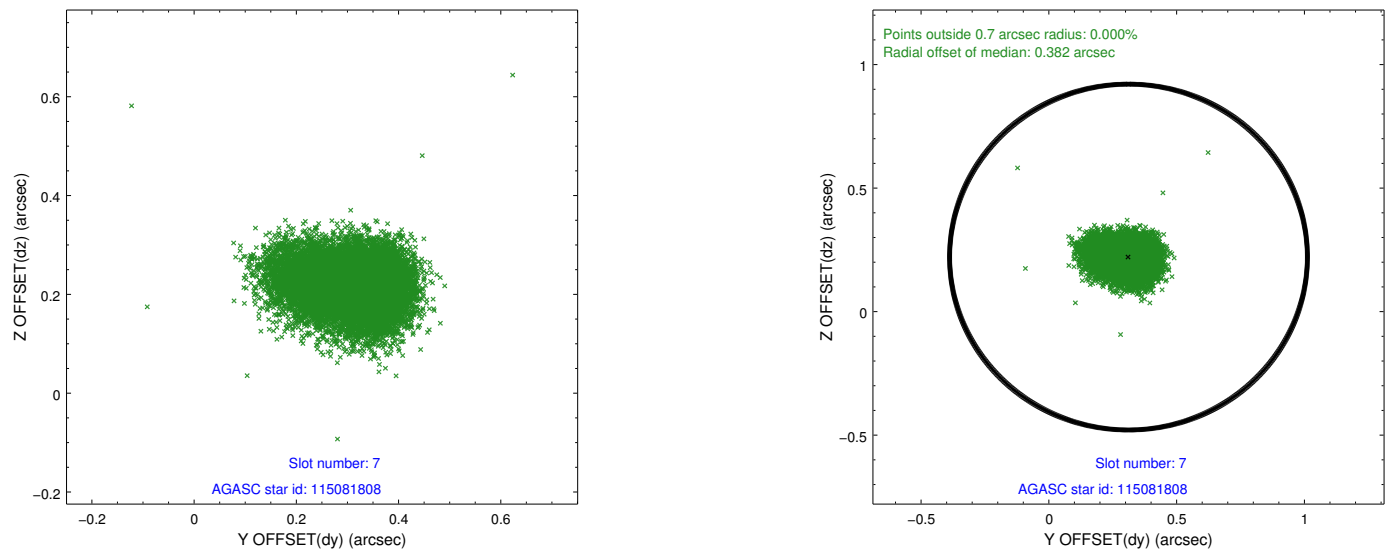
2.4.3 Slot 5



2.4.4 Slot 6

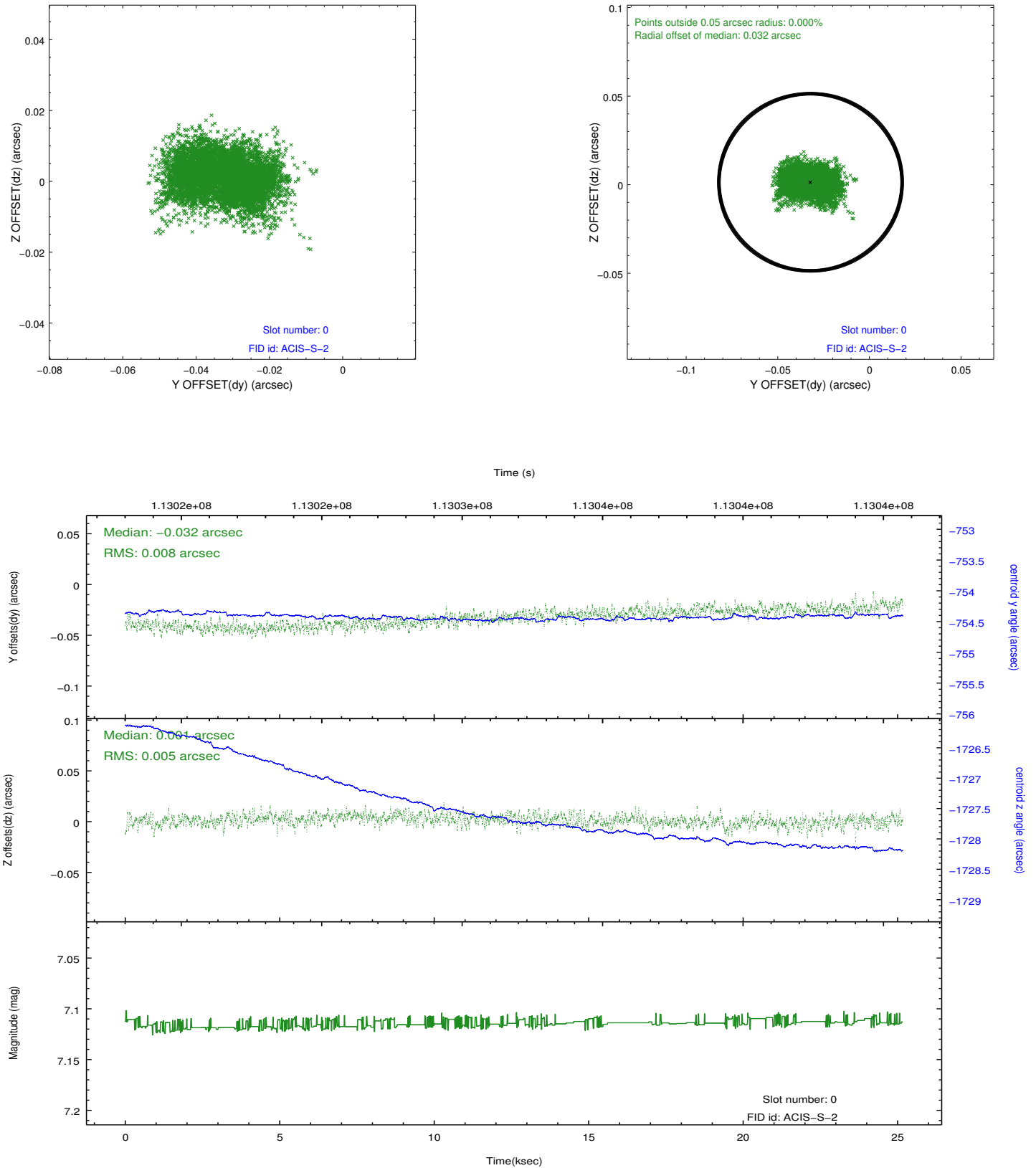


2.4.5 Slot 7

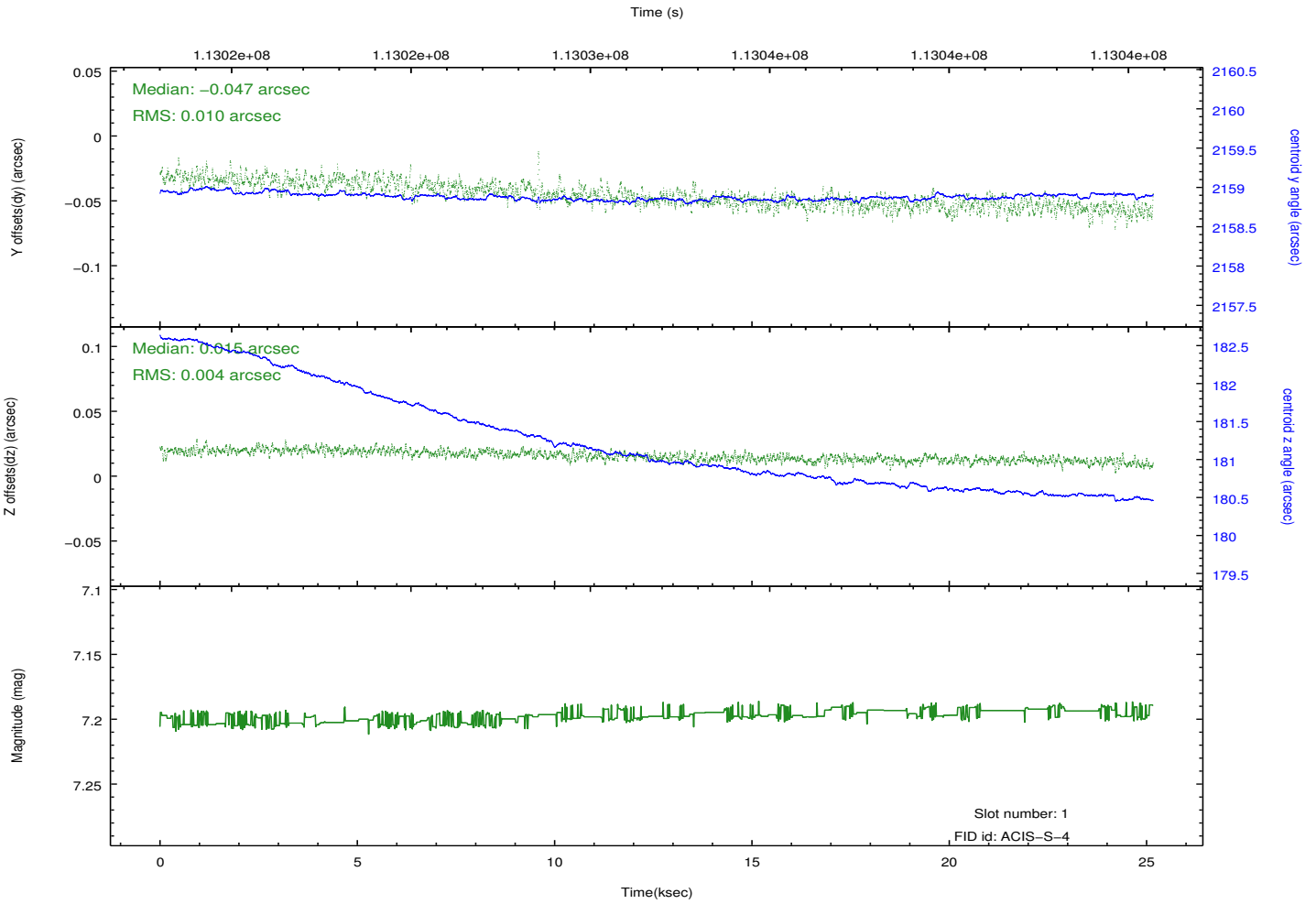
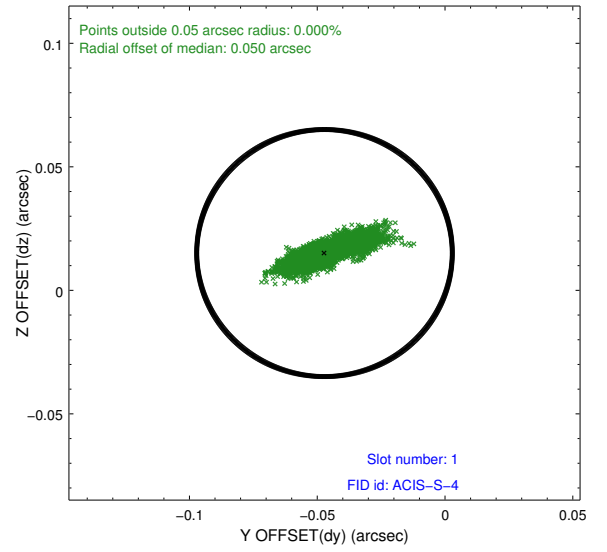
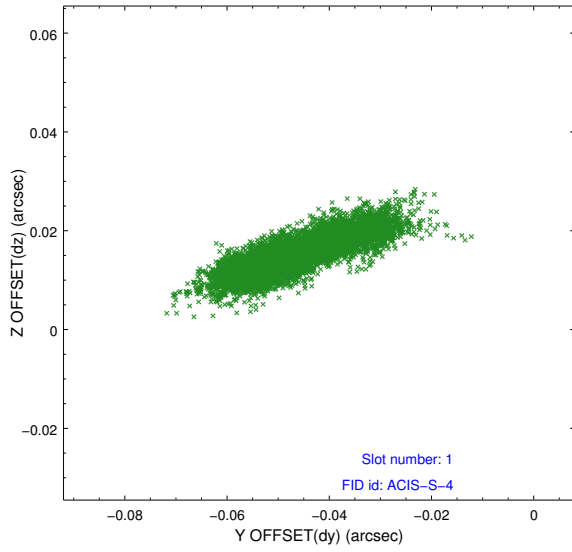


2.5 FID Slots

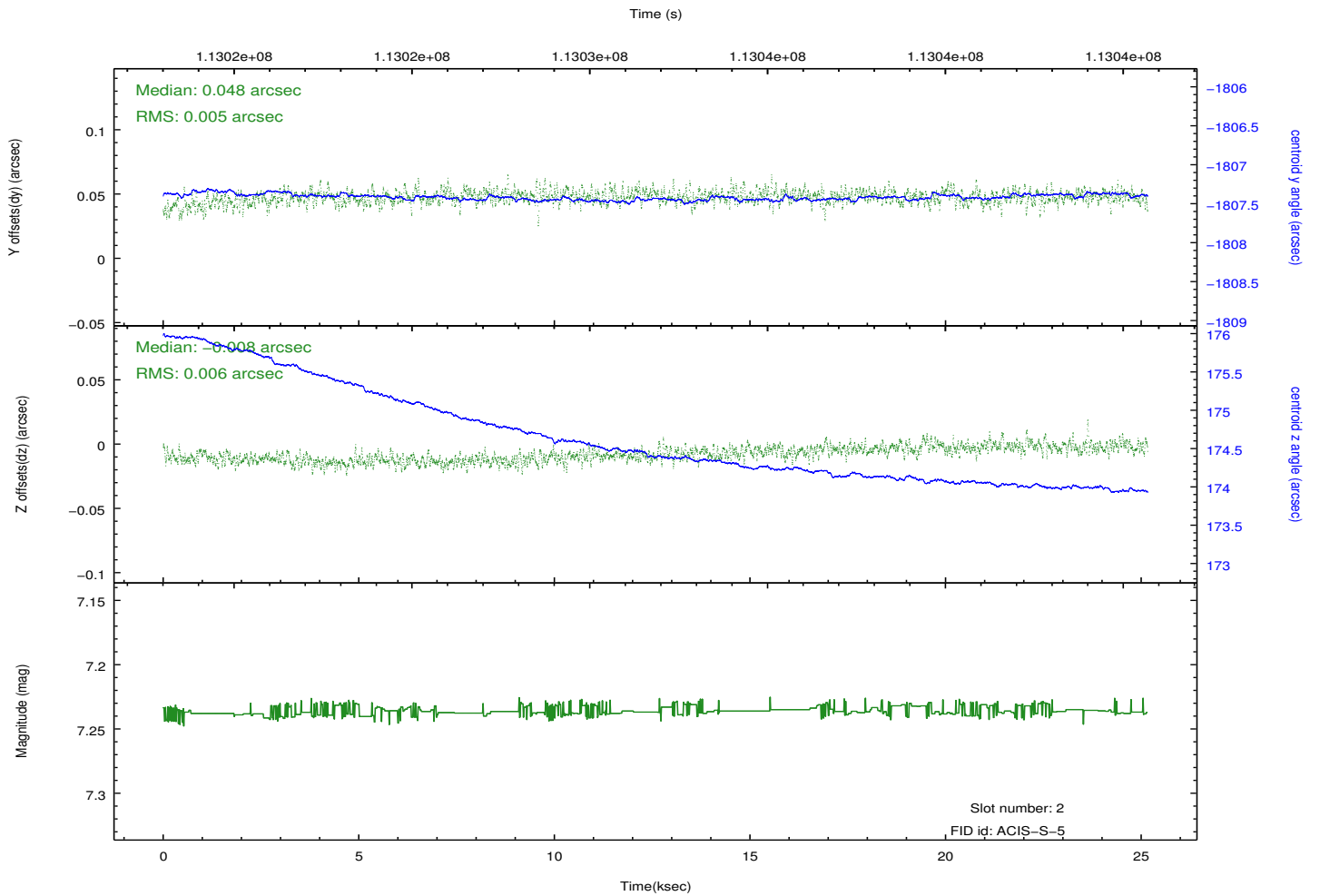
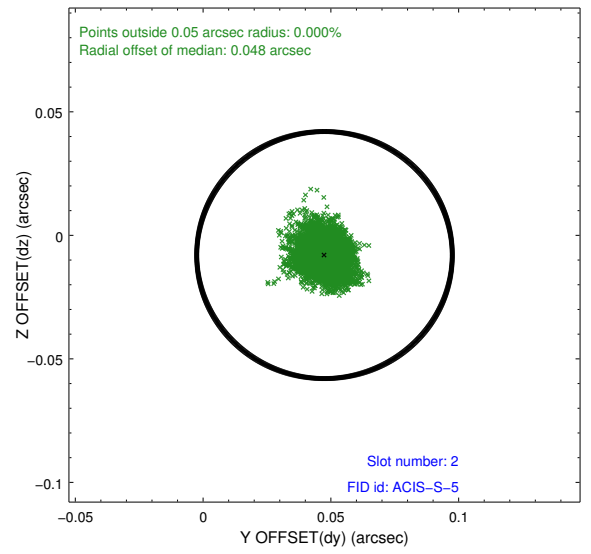
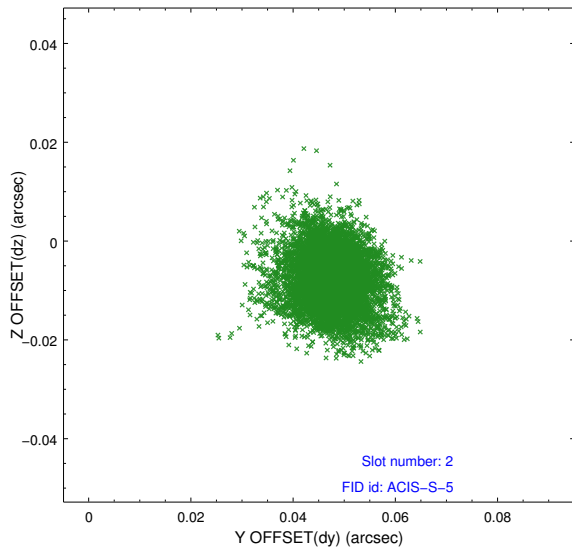
2.5.1 Slot 0



2.5.2 Slot 1



2.5.3 Slot 2



A Summary

A.1 Status

V&V Scientist	Jen Lauer
V&V Date (YYYY-MM-DD)	2012.09.25
V&V Edition	1
V&V Disposition and Status	OK
V&V Charge Time	25.155

A.2 Comments