

V&V Reference Report

L2 ASCDS Version : 8.4.5

Observation 2078 - L2 Version 3
Chandra X-Ray Center

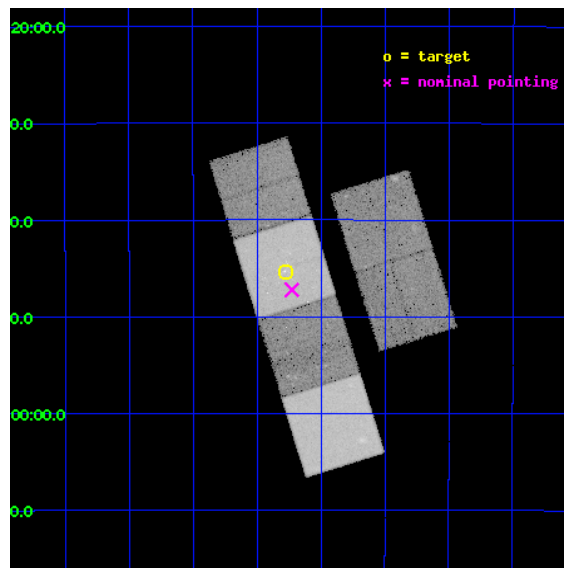
L2 Processing Date : Sep 17 2012

Contents

1	Front	2
2	OBI	3
2.1	OBI	3
2.1.1	Images	3
2.1.2	Bias	3
2.1.3	Parameters	4
2.1.4	Events	4
2.2	Compared Parameters	5
2.3	Aspect	6
2.4	Star Slots	9
2.4.1	Slot 3	9
2.4.2	Slot 4	10
2.4.3	Slot 5	11
2.4.4	Slot 6	12
2.4.5	Slot 7	13
2.5	FID Slots	14
2.5.1	Slot 0	14
2.5.2	Slot 1	15
2.5.3	Slot 2	16
A	Summary	17
A.1	Status	17
A.2	Comments	17

1 Front

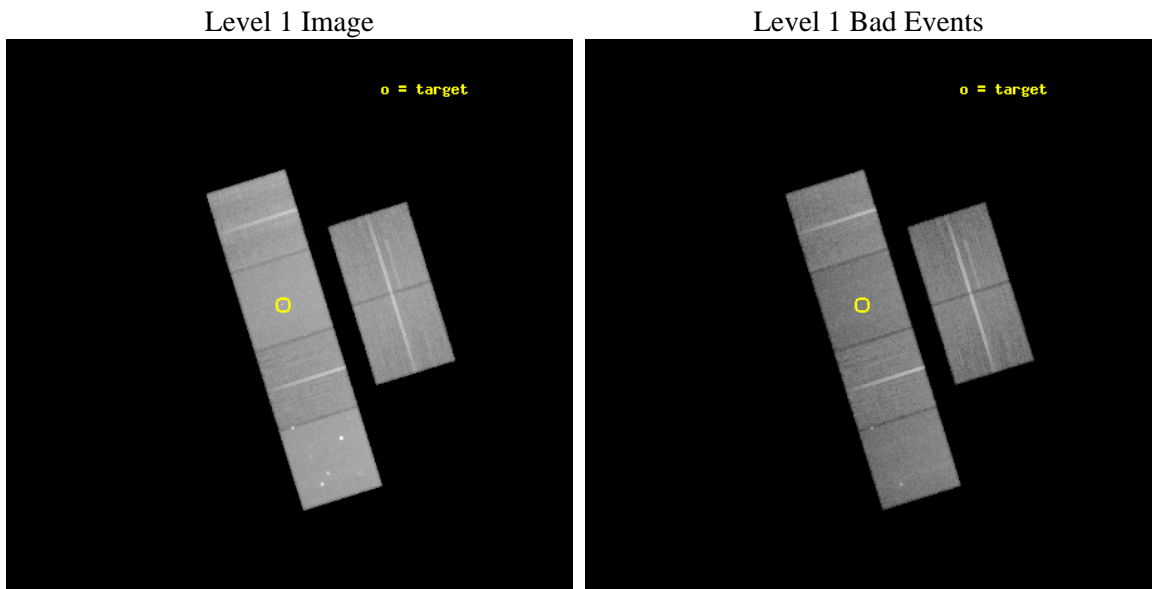
seq_num	600212	Sequence number
obs_id	2078	Observation id
title	GALACTIC WINDS AND COOLING FLOWS IN ELLIPTICAL GALAXIES	Proposal t
observer	Dr. Joel Bregman	Principal investigator
object	NGC 3585	Source name
dtcycle	0	
cycle	P	events from which exps? Prim/Second/Both
ra_targ	168.32	Observer's specified target RA [deg]
dec_targ	-26.755833	Observer's specified target Dec [deg]
ra_nom	168.30698078845	Nominal RA [deg]
dec_nom	-26.787056242237	Nominal Dec [deg]
roll_nom	252.67754840448	Nominal Roll [deg]
revision	3	Processing version of data
ontime	35752.244702116	Sum of GTIs [s]
livetime	35299.52825228	Livetime [s]
ontime2	35752.285732105	Sum of GTIs [s]
ontime3	35755.362542361	Sum of GTIs [s]
ontime5	35752.203692034	Sum of GTIs [s]
ontime6	35755.403582364	Sum of GTIs [s]
ontime7	35752.244702116	Sum of GTIs [s]
ontime8	35752.080552042	Sum of GTIs [s]
l2events	349407	Number of level 2 events



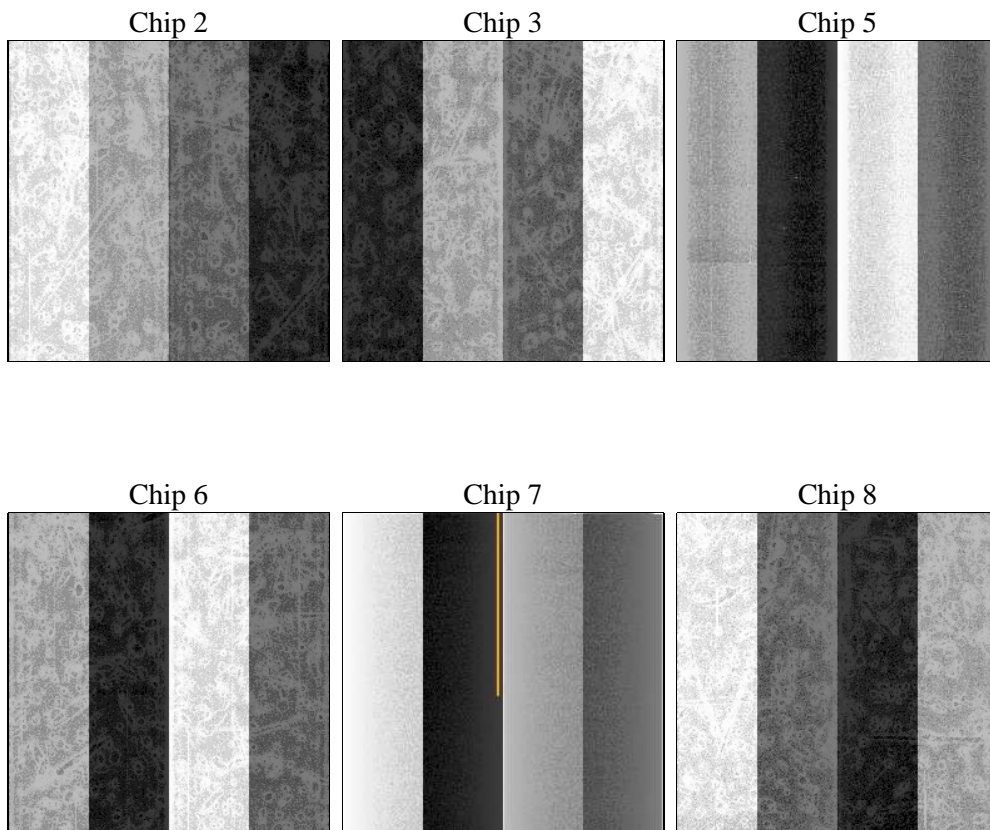
2 OBI

2.1 OBI

2.1.1 Images



2.1.2 Bias



2.1.3 Parameters

obi_num	0	Obi number	sched_exp_time	36000.000000	[s] Scheduled observation exposure time
ascdsver	8.4.5	Processing system revision	ontime	35752.244702116	Sum of GTIs [s]
caldbver	4.5.1.1	 	ontime2	35752.285732105	Sum of GTIs [s]
date	2012-09-17T18:59:11	Date and time of file creation	ontime3	35755.362542361	Sum of GTIs [s]
revision	3	Processing version of data	ontime5	35752.203692034	Sum of GTIs [s]
			ontime6	35755.403582364	Sum of GTIs [s]
			ontime7	35752.244702116	Sum of GTIs [s]
			ontime8	35752.080552042	Sum of GTIs [s]
			l1events	1610154	Number of level 1 events

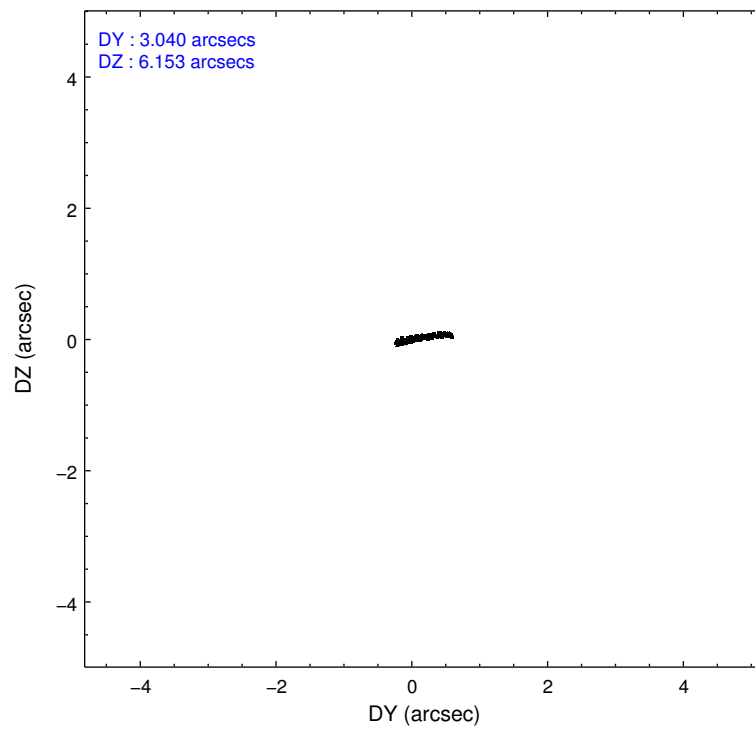
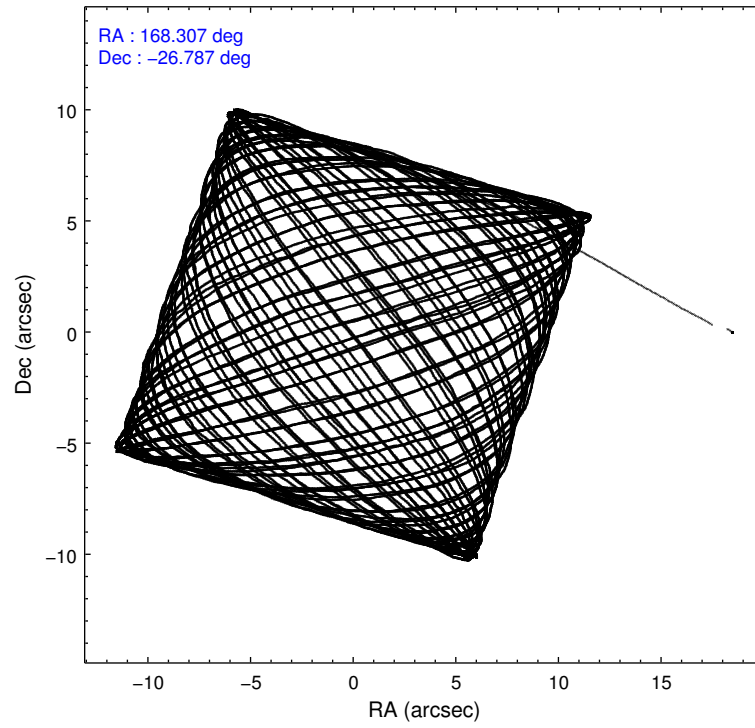
2.1.4 Events

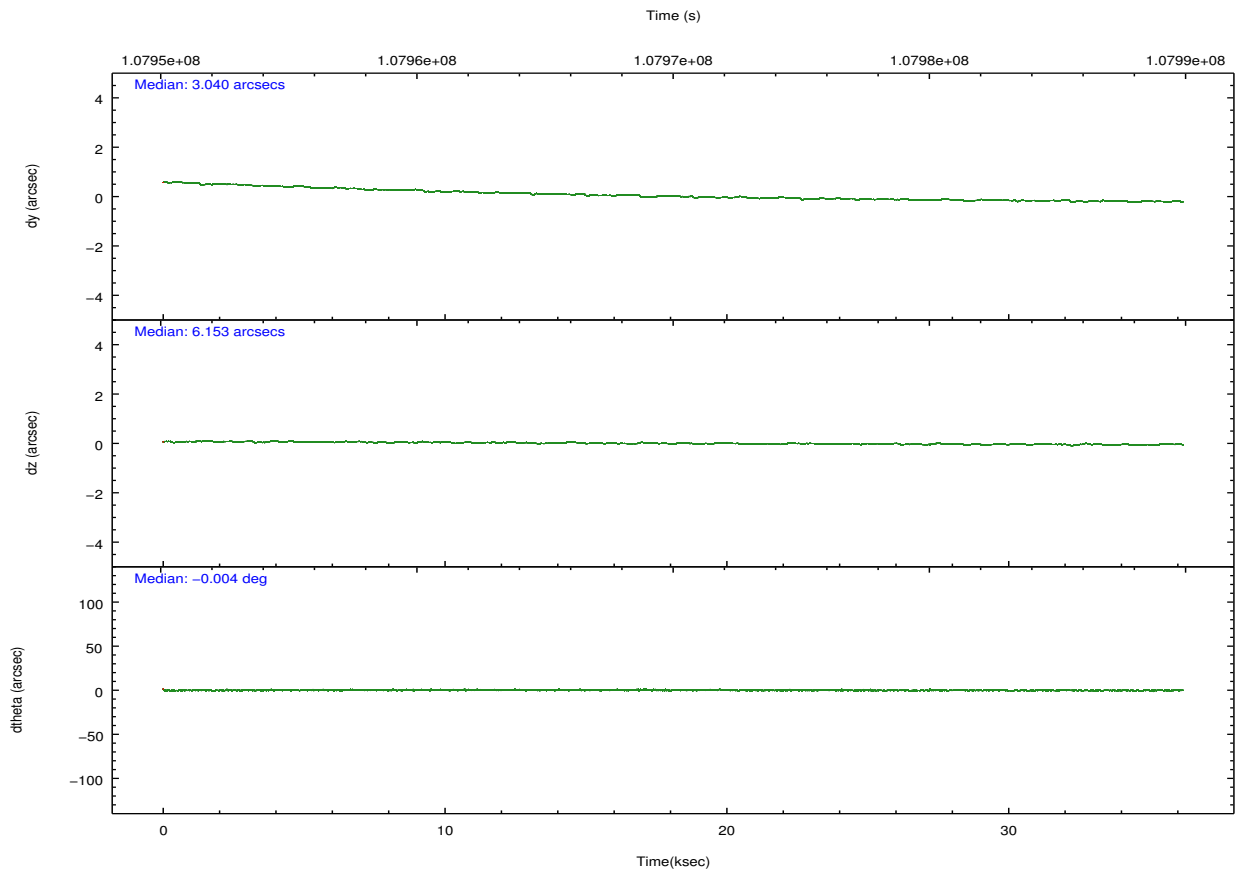
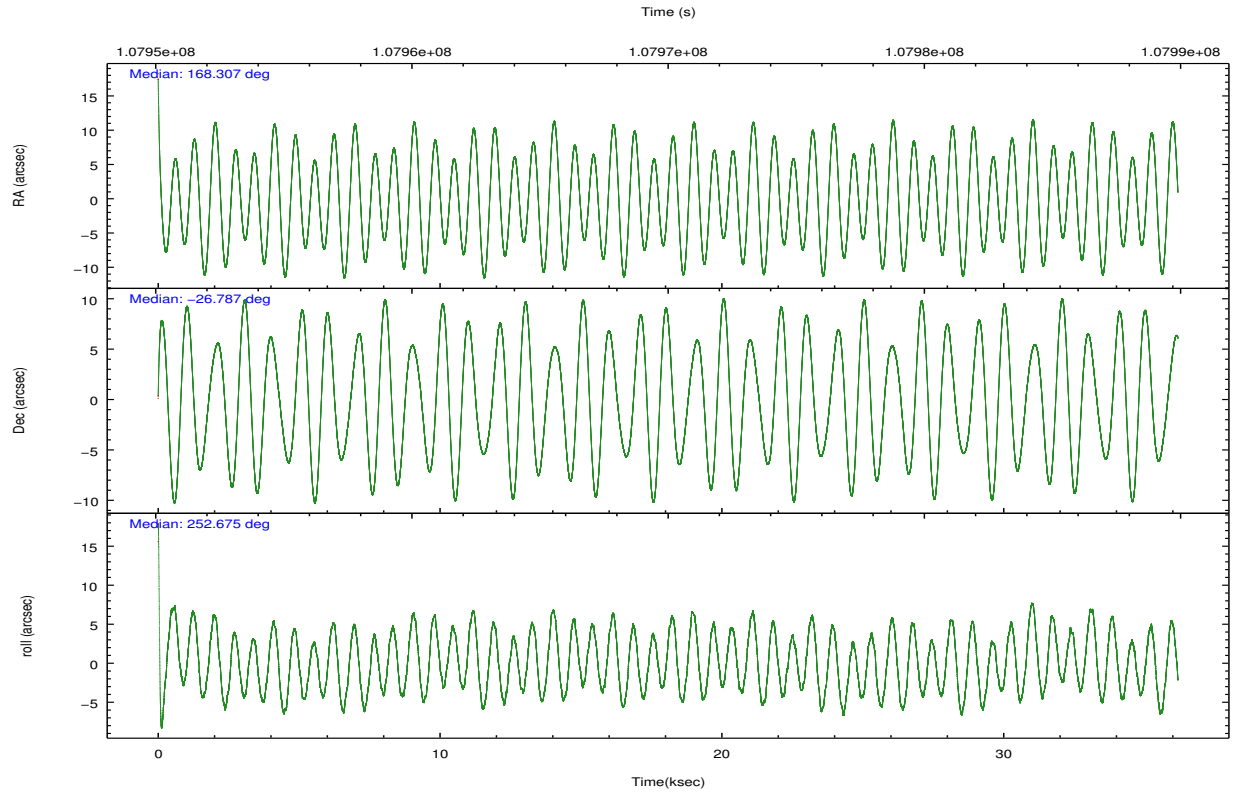
	ccd 2	ccd 3	ccd 5	ccd 6	ccd 7	ccd 8		ccd 2	ccd 3	ccd 5	ccd 6	ccd 7	ccd 8
level 1 events	235093	224916	328276	233591	293957	294321	grade 0 events	10779	10742	21945	10851	12399	18752
rejected events	209408	199828	173740	207130	170099	233522		4%	4%	6%	4%	4%	6%
rejected %	89%	88%	52%	88%	57%	79%	grade 1 events	113	105	528	102	256	175
								0%	0%	0%	0%	0%	0%
							grade 2 events	5605	4975	44287	5275	24649	13078
								2%	2%	13%	2%	8%	4%
							grade 3 events	2460	2372	6859	2615	11333	6812
								1%	1%	2%	1%	3%	2%
							grade 4 events	2407	2463	6132	2592	11353	6219
								1%	1%	1%	1%	3%	2%
							grade 5 events	8018	8575	25079	9746	27921	12037
								3%	3%	7%	4%	9%	4%
							grade 6 events	4434	4538	75341	5133	64143	15945
								1%	2%	22%	2%	21%	5%
							grade 7 events	201277	191146	148105	197277	141903	221303
								85%	84%	45%	84%	48%	75%

2.2 Compared Parameters

Parameter	Planned	Actual	Parameter	Planned	Actual
Instrument	ACIS	ACIS	Obspar format version number	7	7
Detector	ACIS-235678	ACIS-235678	Obspar file type	PREDICTED	ACTUAL
Grating	NONE	NONE	Obspar update status	NONE	UPDATED
Data mode	FAINT	FAINT	Number of optional ACIS chips dropped	0	0
Observation mode	POINTING	POINTING	On-chip summing requested	N	N
[deg] Pointing RA	168.299956	168.3069807884536	Subarray requested	NONE	NONE
[deg] Pointing Dec	-26.760502	-26.78705624223733	Alternating exposures requested	N	N
[deg] Pointing Roll	252.517746	252.6775484044843	[s] Primary exposure time	0.000000	3.2
[mm] SIM focus pos	-0.684267	-0.6828225247311905			
[mm] SIM defocus	0	0.001444936568705701			
[mm] SIM translation stage pos	-190.132523	-190.1400660498719			
[mm] SIM translation stage offset	0	0.00754346686406393			
[s] Observation start time (MET)	107952086.184000	107951244.37631			
Observation start date	2001-06-03T10:40:22	2001-06-03T10:27:24			
[s] Observation end time (MET)	107988086.184000	107988735.80277			
Observation end date	2001-06-03T20:40:22	2001-06-03T20:52:15			
Read mode	TIMED	TIMED			

2.3 Aspect



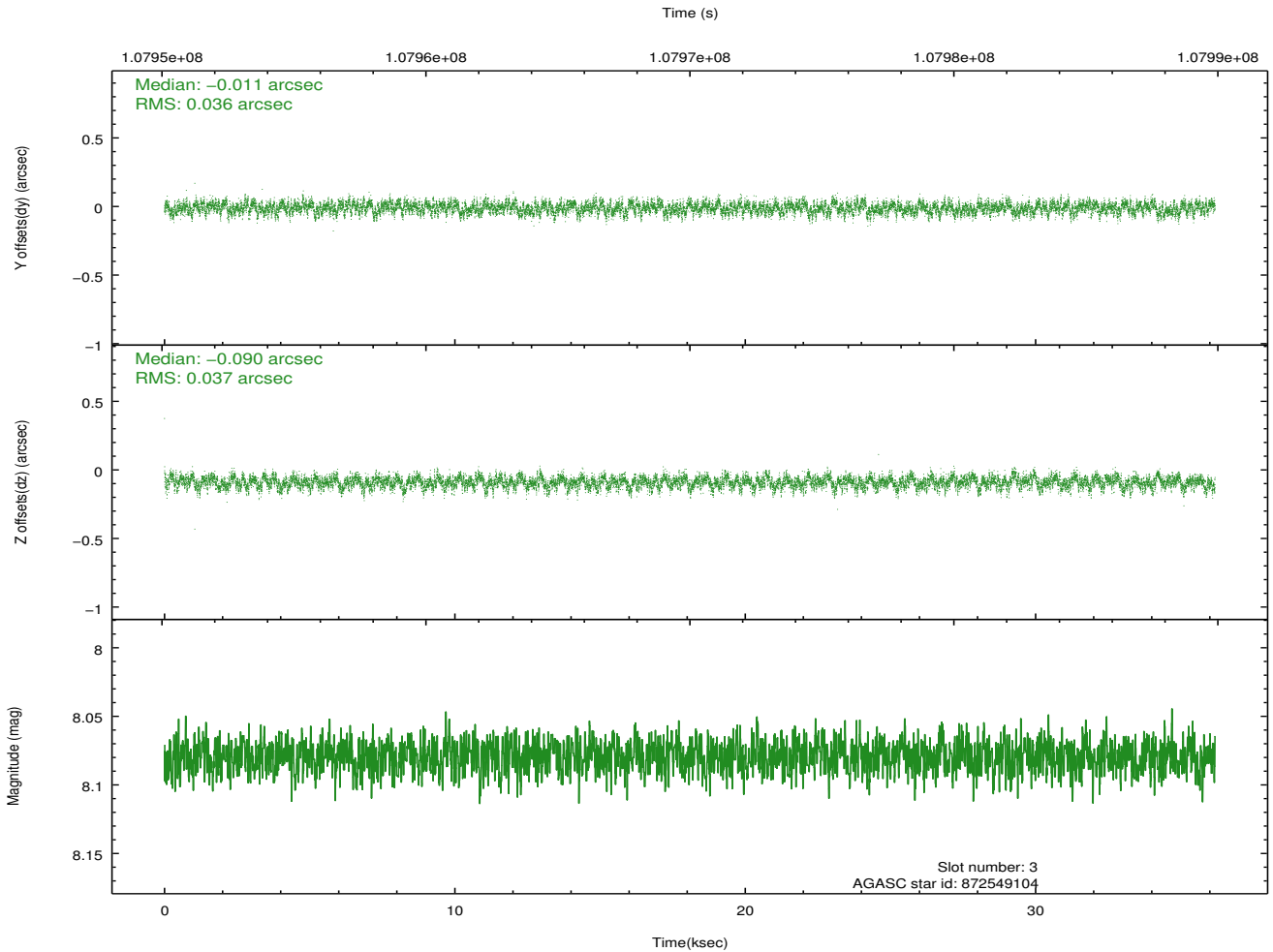
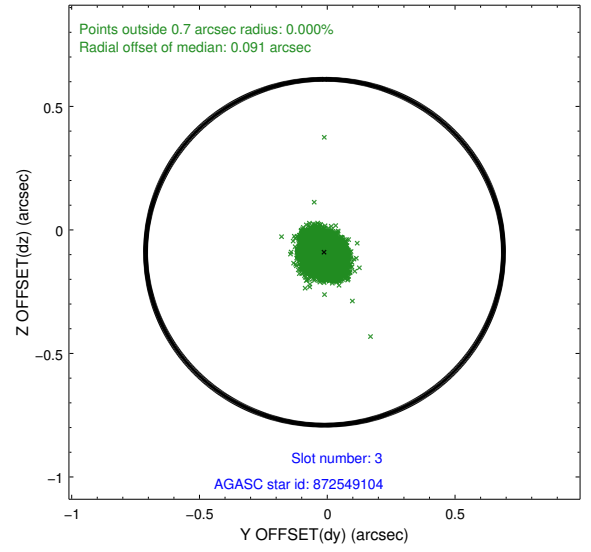
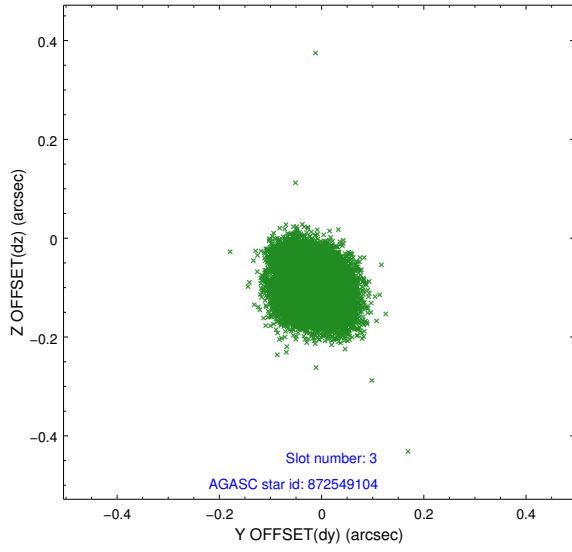


Slot Statistics

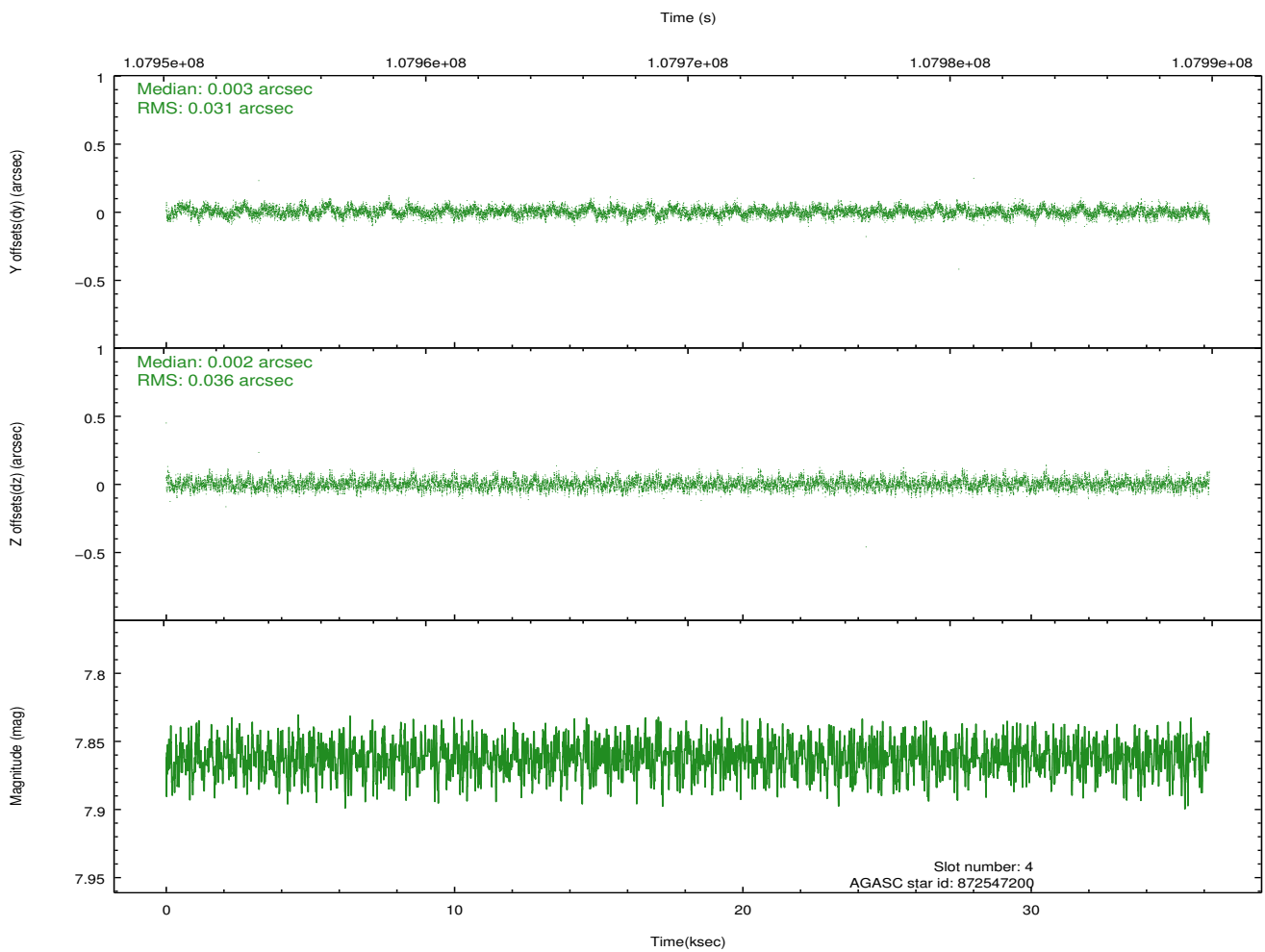
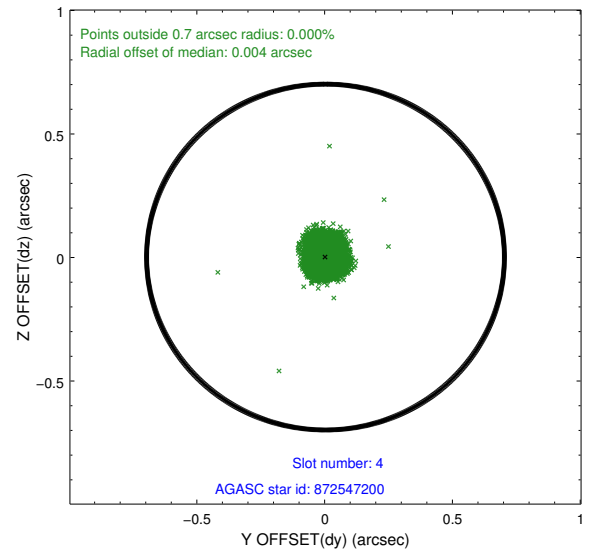
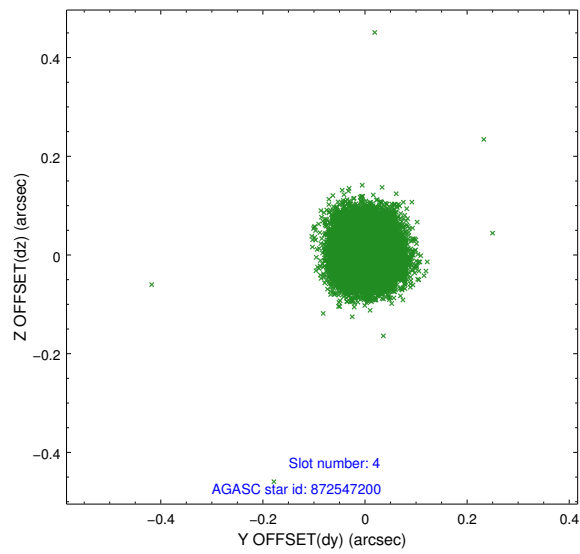
slot	status	id	mag	n_pts	med_dy	med_dz	dr1	dr2	ra	dec	mean_y	mean_z
0	FID	ACIS-S-3	7.36	8824	-0.096	-0.068	0.007	0.012	0.000000	0.000000	57.36	-1856.43
1	FID	ACIS-S-4	7.20	8824	-0.002	0.082	0.009	0.016	0.000000	0.000000	2157.60	181.23
2	FID	ACIS-S-5	7.23	8824	0.070	-0.005	0.009	0.016	0.000000	0.000000	-1808.48	174.84
3	GUIDE	872549104	8.08	17644	-0.011	-0.090	0.055	0.090	168.431052	-26.854580	197.33	503.50
4	GUIDE	872547200	7.86	17649	0.003	0.002	0.050	0.081	168.685987	-27.308159	1511.92	1770.92
5	GUIDE	872548672	8.91	17647	0.129	-0.060	0.073	0.122	168.474975	-26.730685	-270.28	504.83
6	GUIDE	872547832	9.59	17636	-0.005	0.081	0.090	0.148	168.641725	-26.677801	-612.29	959.92
7	GUIDE	872549456	9.10	17637	-0.116	0.068	0.075	0.121	168.830096	-26.635430	-938.16	1493.26

2.4 Star Slots

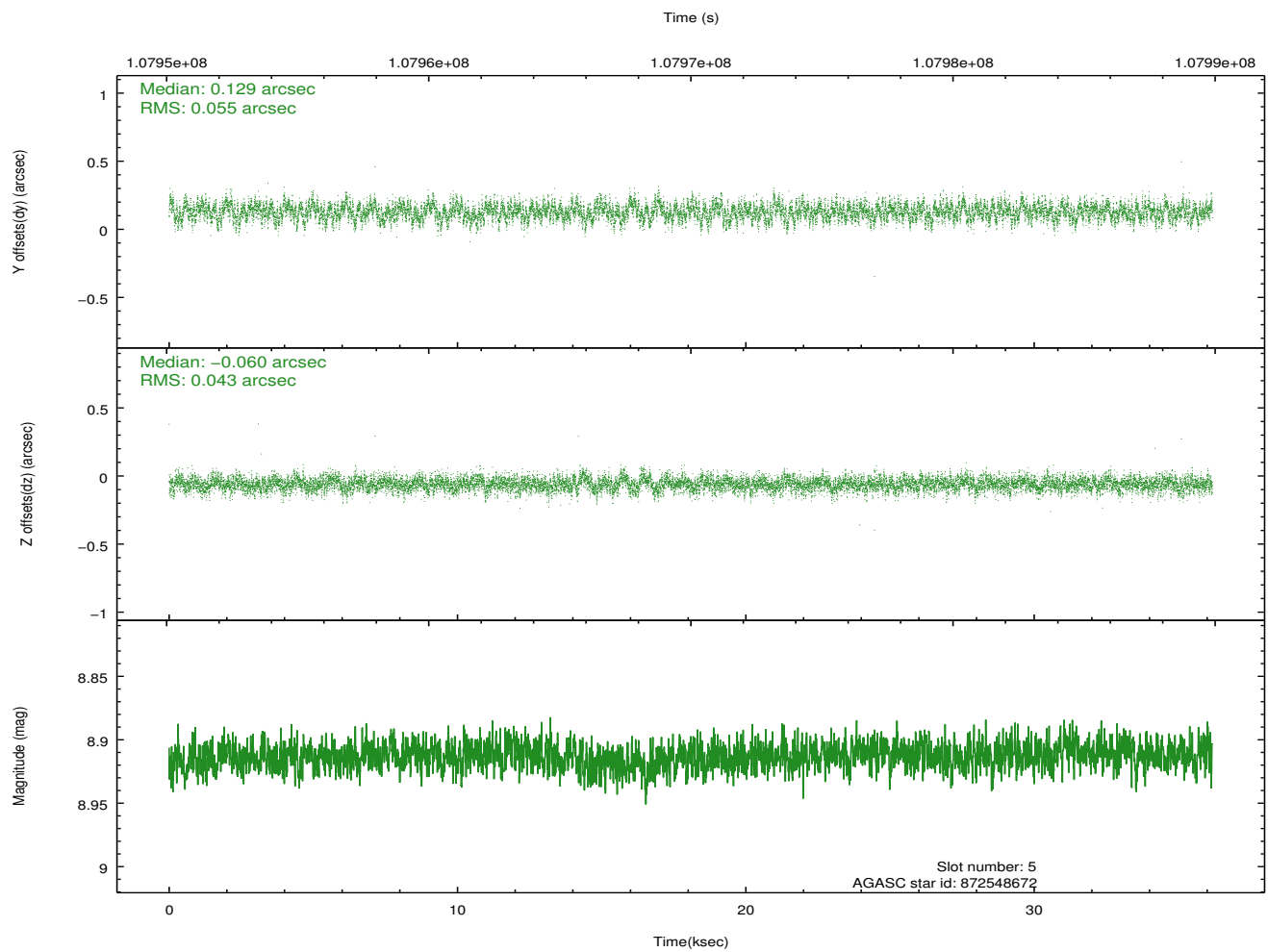
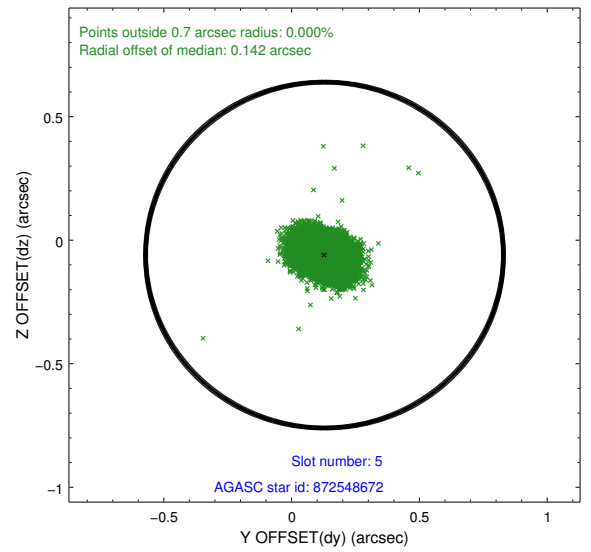
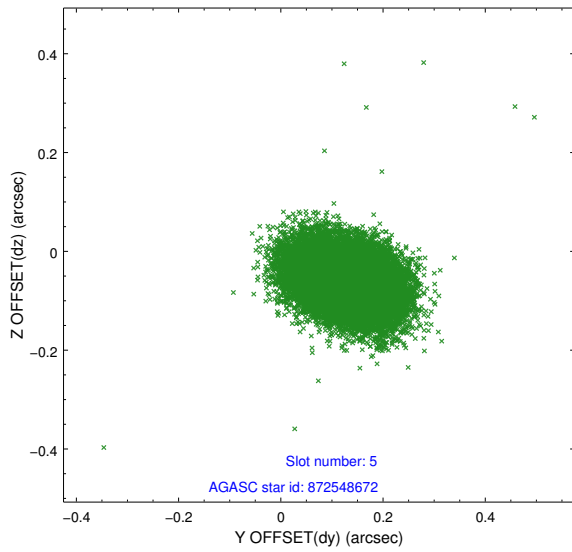
2.4.1 Slot 3



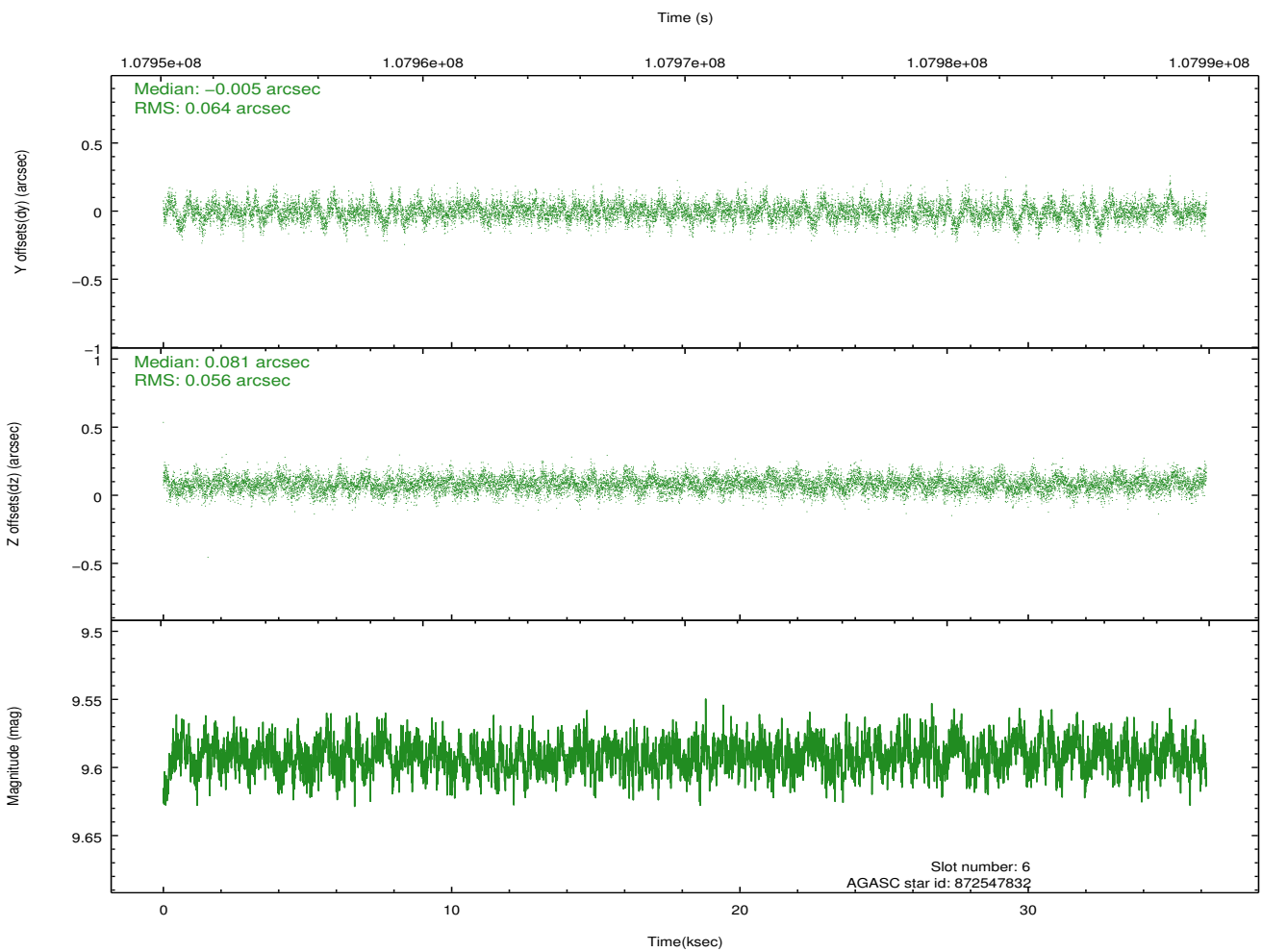
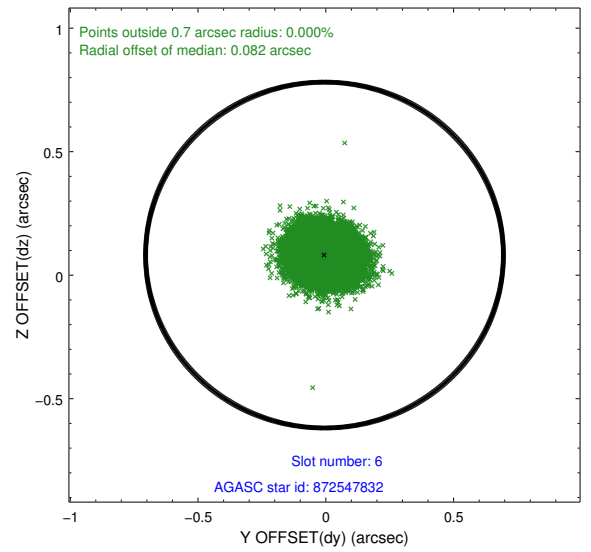
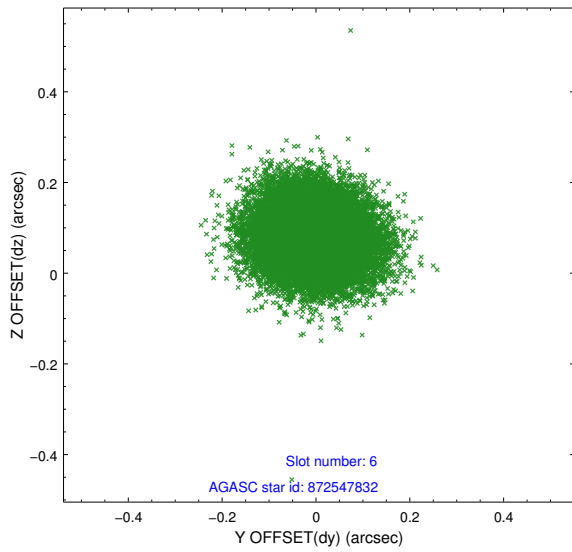
2.4.2 Slot 4



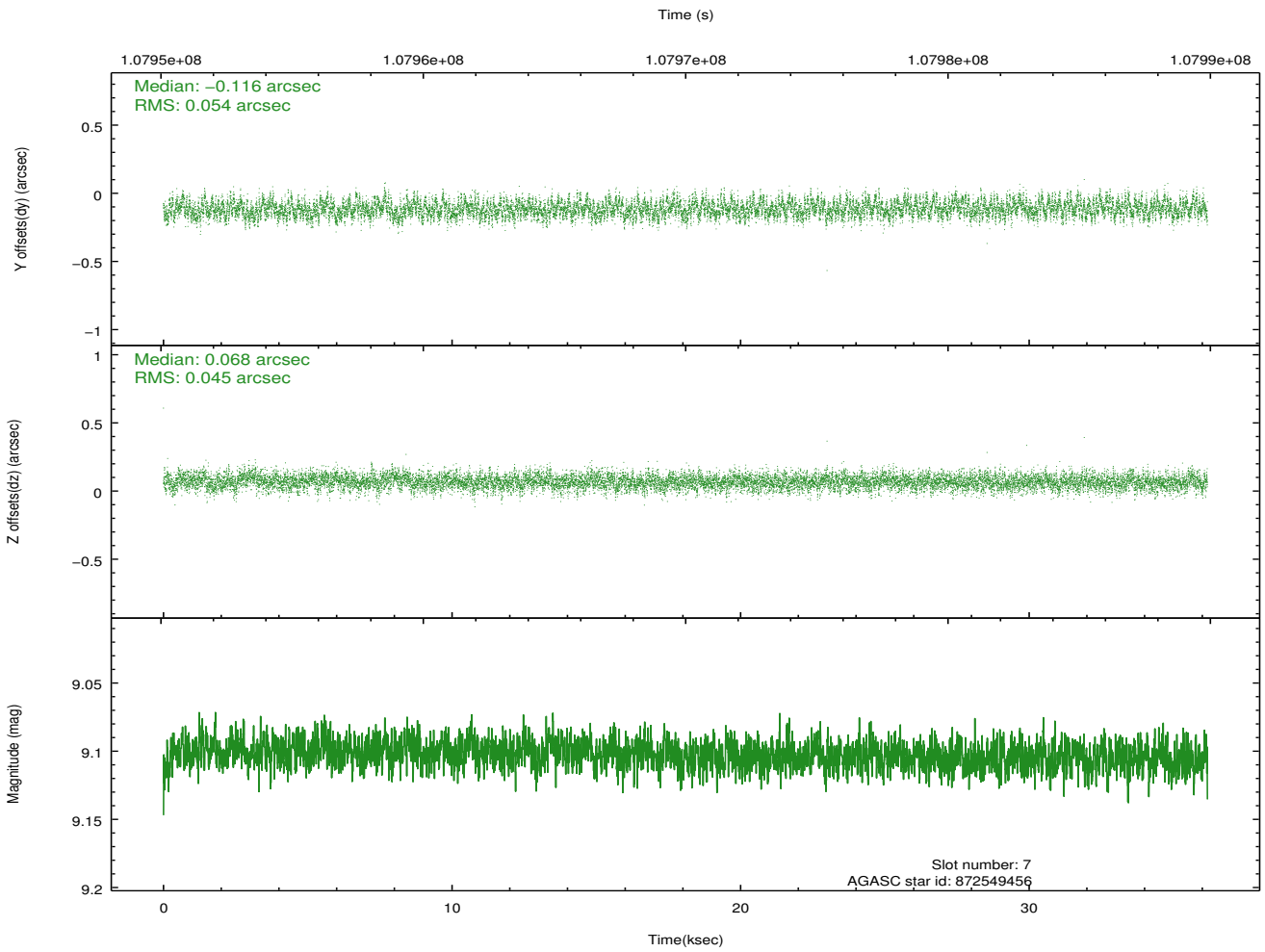
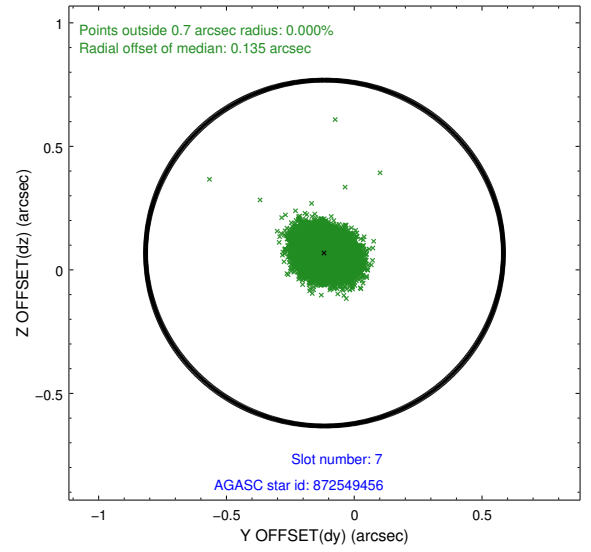
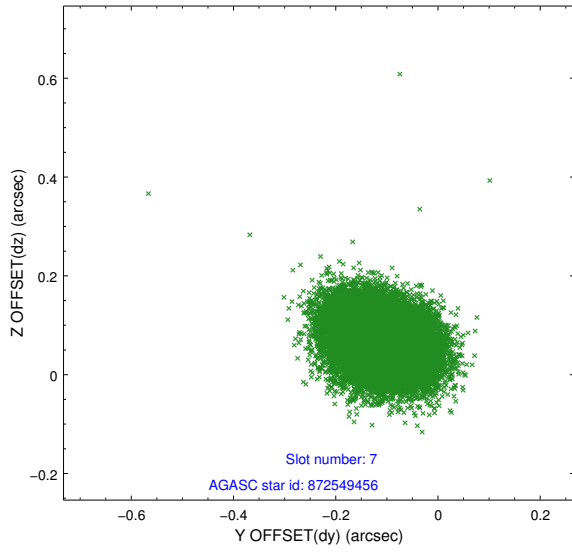
2.4.3 Slot 5



2.4.4 Slot 6

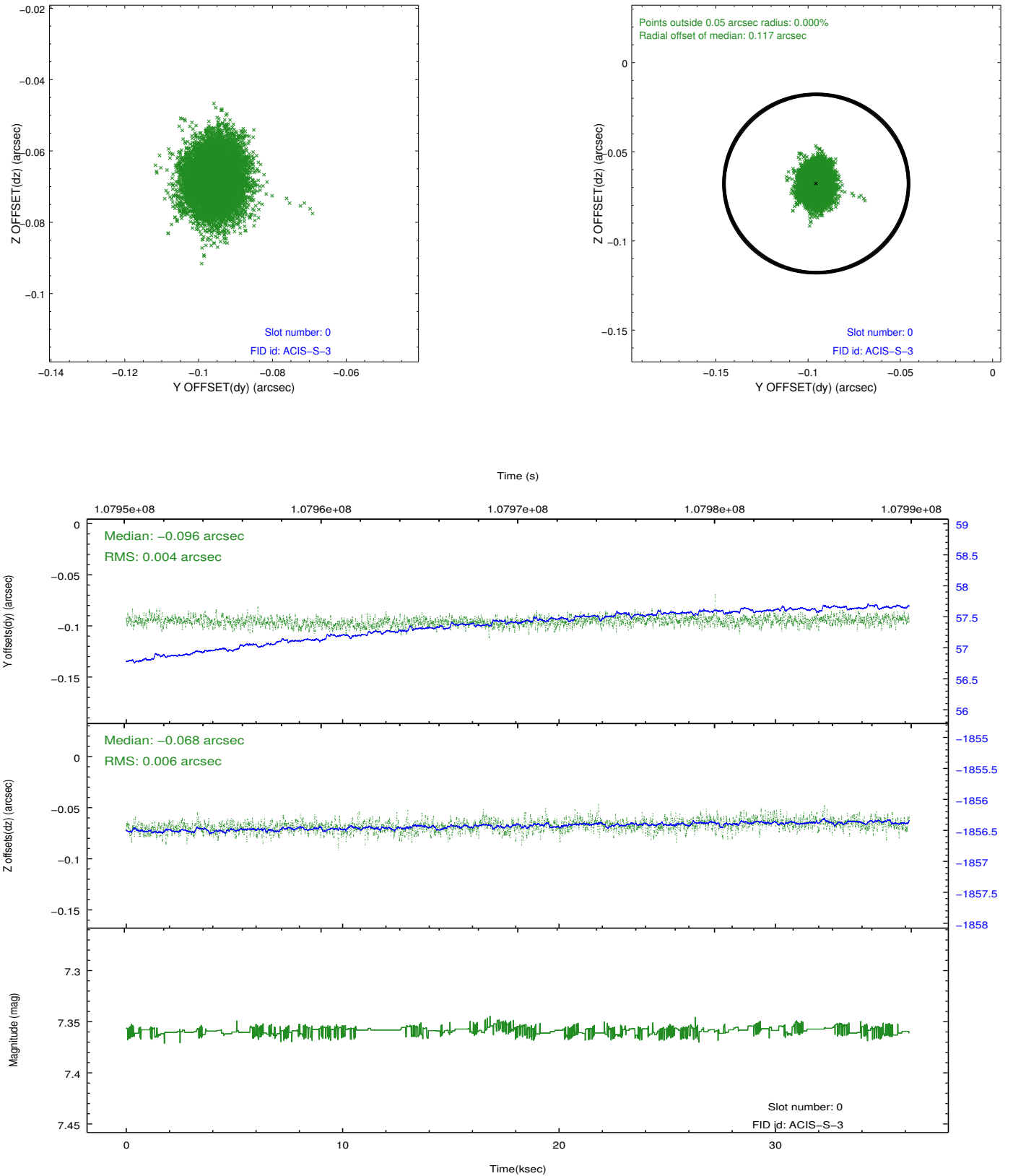


2.4.5 Slot 7

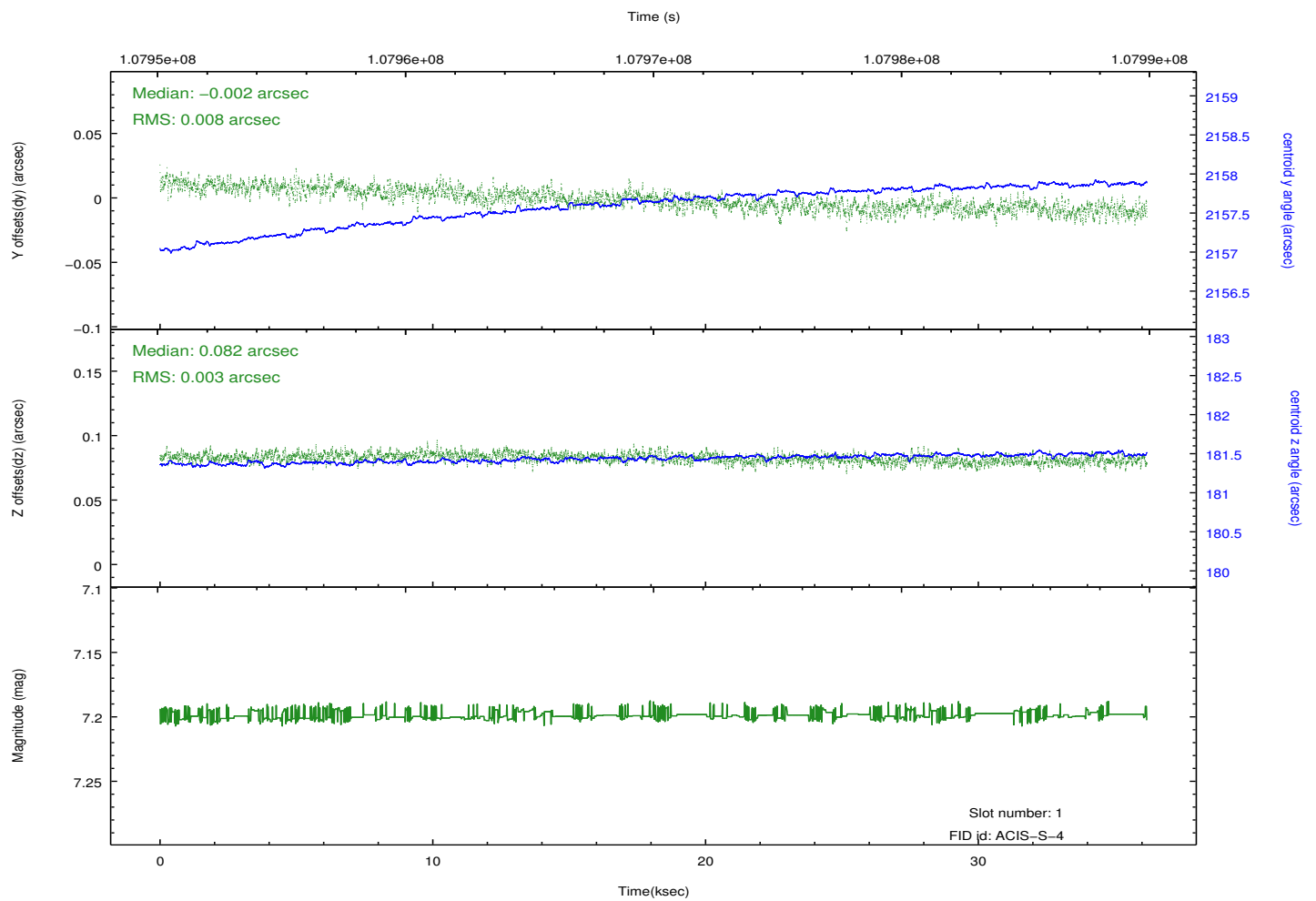
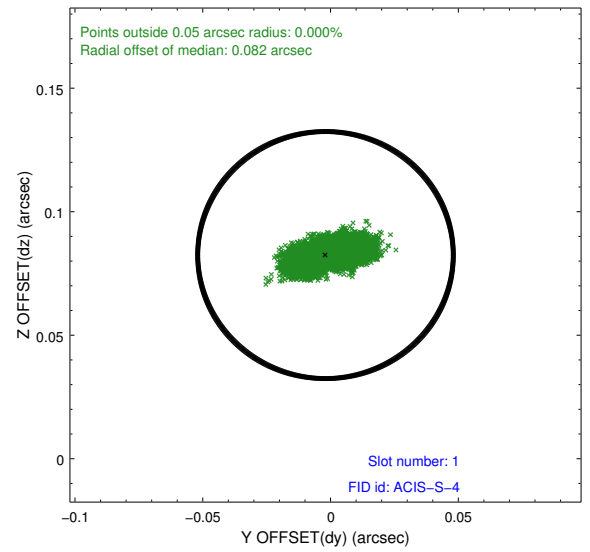
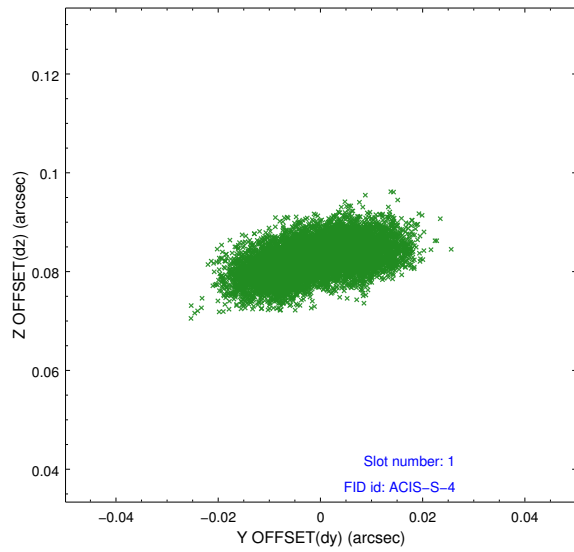


2.5 FID Slots

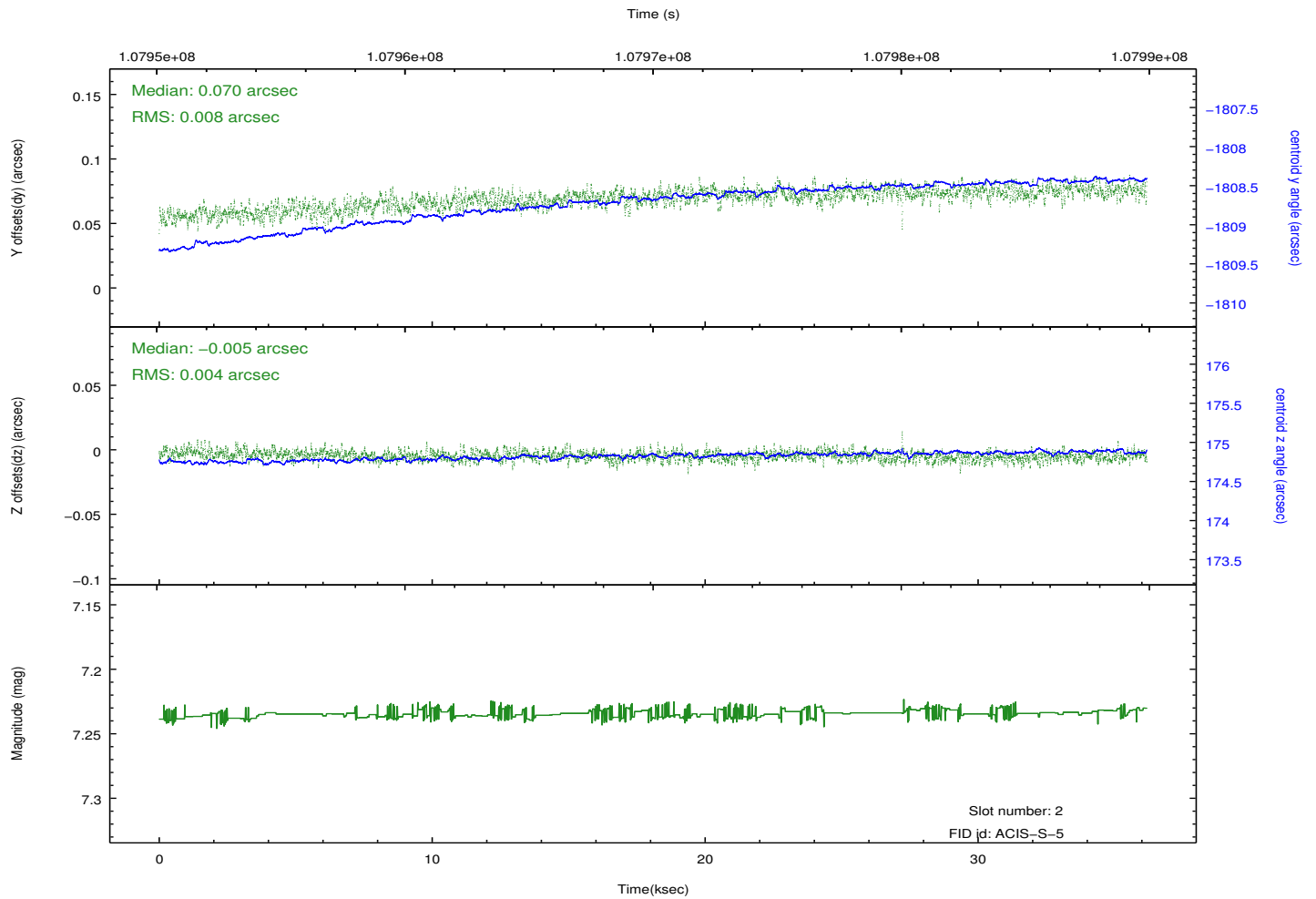
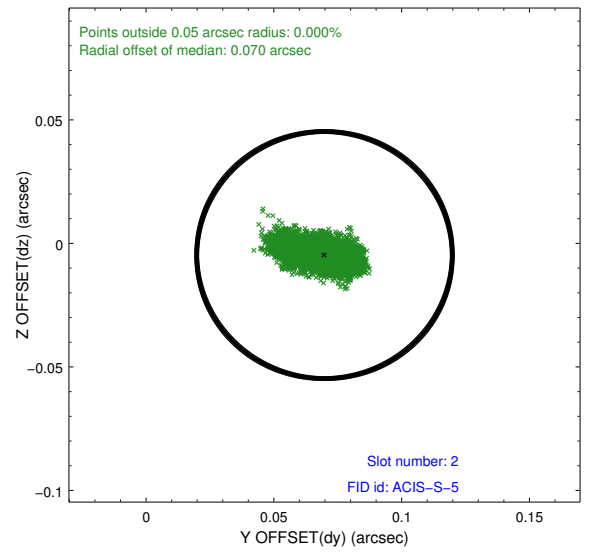
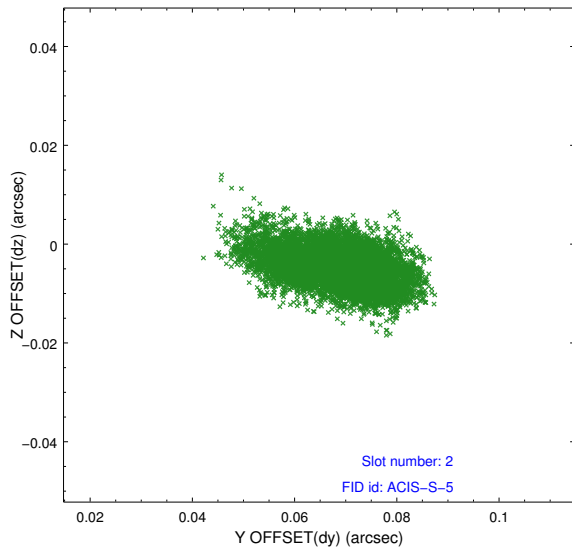
2.5.1 Slot 0



2.5.2 Slot 1



2.5.3 Slot 2



A Summary

A.1 Status

V&V Scientist	Jen Lauer
V&V Date (YYYY-MM-DD)	2012.09.20
V&V Edition	1
V&V Disposition and Status	OK
V&V Charge Time	35.747

A.2 Comments