

V&V Reference Report

L2 ASCDS Version : 8.4.5

Observation 2138 - L2 Version 3
Chandra X-Ray Center

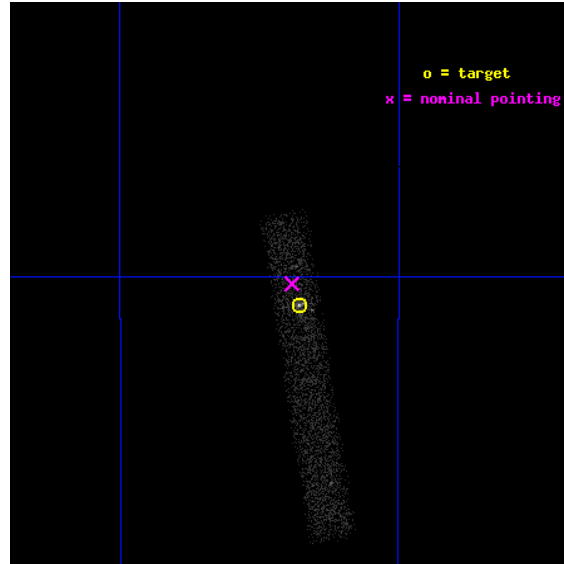
L2 Processing Date : Sep 4 2012

Contents

| | | |
|----------|-------------------------------|-----------|
| 1 | Front | 2 |
| 2 | OBI | 3 |
| 2.1 | OBI | 3 |
| 2.1.1 | Images | 3 |
| 2.1.2 | Bias | 3 |
| 2.1.3 | Parameters | 4 |
| 2.1.4 | Events | 4 |
| 2.2 | Compared Parameters | 5 |
| 2.3 | Aspect | 6 |
| 2.4 | Star Slots | 9 |
| 2.4.1 | Slot 3 | 9 |
| 2.4.2 | Slot 4 | 10 |
| 2.4.3 | Slot 5 | 11 |
| 2.4.4 | Slot 6 | 12 |
| 2.4.5 | Slot 7 | 13 |
| 2.5 | FID Slots | 14 |
| 2.5.1 | Slot 0 | 14 |
| 2.5.2 | Slot 1 | 15 |
| 2.5.3 | Slot 2 | 16 |
| A | Summary | 17 |
| A.1 | Status | 17 |
| A.2 | Comments | 17 |

1 Front

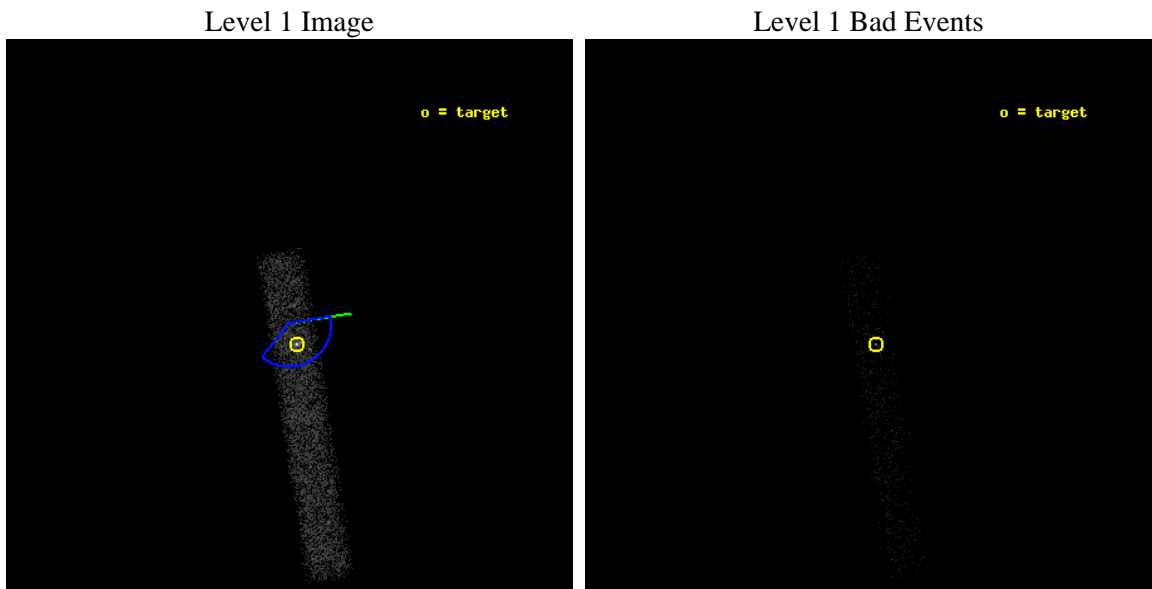
| | | |
|----------|--|---|
| seq_num | 700328 | Sequence number |
| obs_id | 2138 | Observation id |
| title | AN UNBIASED SURVEY OF X-RAY AND OPTICAL EMISSION FROM EXTENDED RADIO JETS IN AGN | Proposal title |
| observer | Dr. Rita Sambruna | Principal investigator |
| object | 1136-135 | Source name |
| dtcycle | 0 | |
| cycle | P | events from which exps? Prim/Second/Both |
| ra_targ | 174.794583 | Observer's specified target RA [deg] |
| dec_targ | -13.845556 | Observer's specified target Dec [deg] |
| ra_nom | 174.79793279646 | Nominal RA [deg] |
| dec_nom | -13.836264358031 | Nominal Dec [deg] |
| roll_nom | 81.157387840154 | Nominal Roll [deg] |
| revision | 3 | Processing version of data |
| ontime | 9820.0001463294 | Sum of GTIs [s] |
| livetime | 8906.2217906126 | Livetime [s] |
| ontime7 | 9820.0001463294 | Sum of GTIs [s] |
| l2events | 8174 | Number of level 2 events |



2 OBI

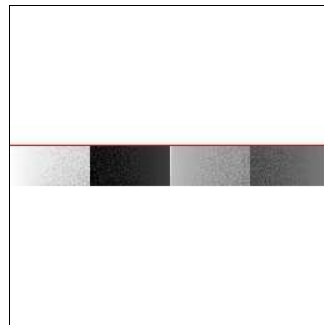
2.1 OBI

2.1.1 Images



2.1.2 Bias

Chip 7



2.1.3 Parameters

| | | | | | |
|----------|---------------------|--------------------------------|----------------|-----------------|---|
| obi_num | 1 | Obi number | sched_exp_time | 9600.000000 | [s] Scheduled observation exposure time |
| ascdsver | 8.4.5 | Processing system revision | ontime | 9820.0001463294 | Sum of GTIs [s] |
| caldbver | 4.5.1.1 | | ontime7 | 9820.0001463294 | Sum of GTIs [s] |
| date | 2012-09-04T03:52:04 | Date and time of file creation | l1events | 13905 | Number of level 1 events |
| revision | 3 | Processing version of data | | | |

2.1.4 Events

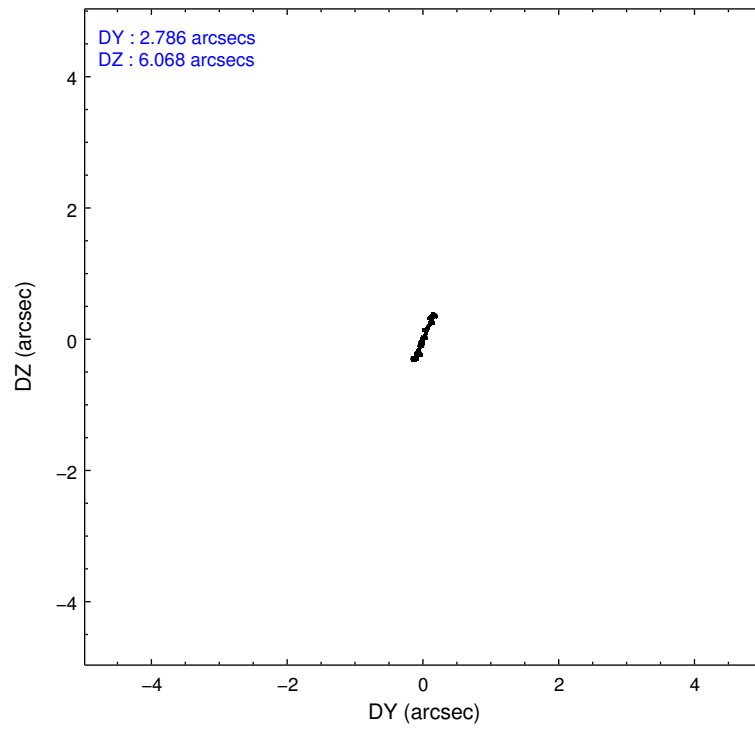
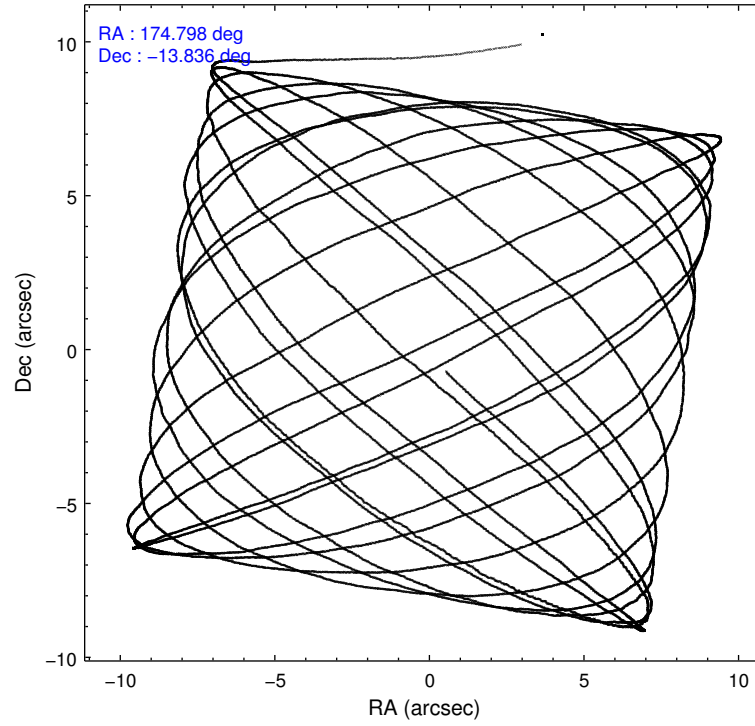
| | ccd 7 |
|-----------------|--------------|
| level 1 events | 13905 |
| rejected events | 5552 |
| rejected % | 39% |

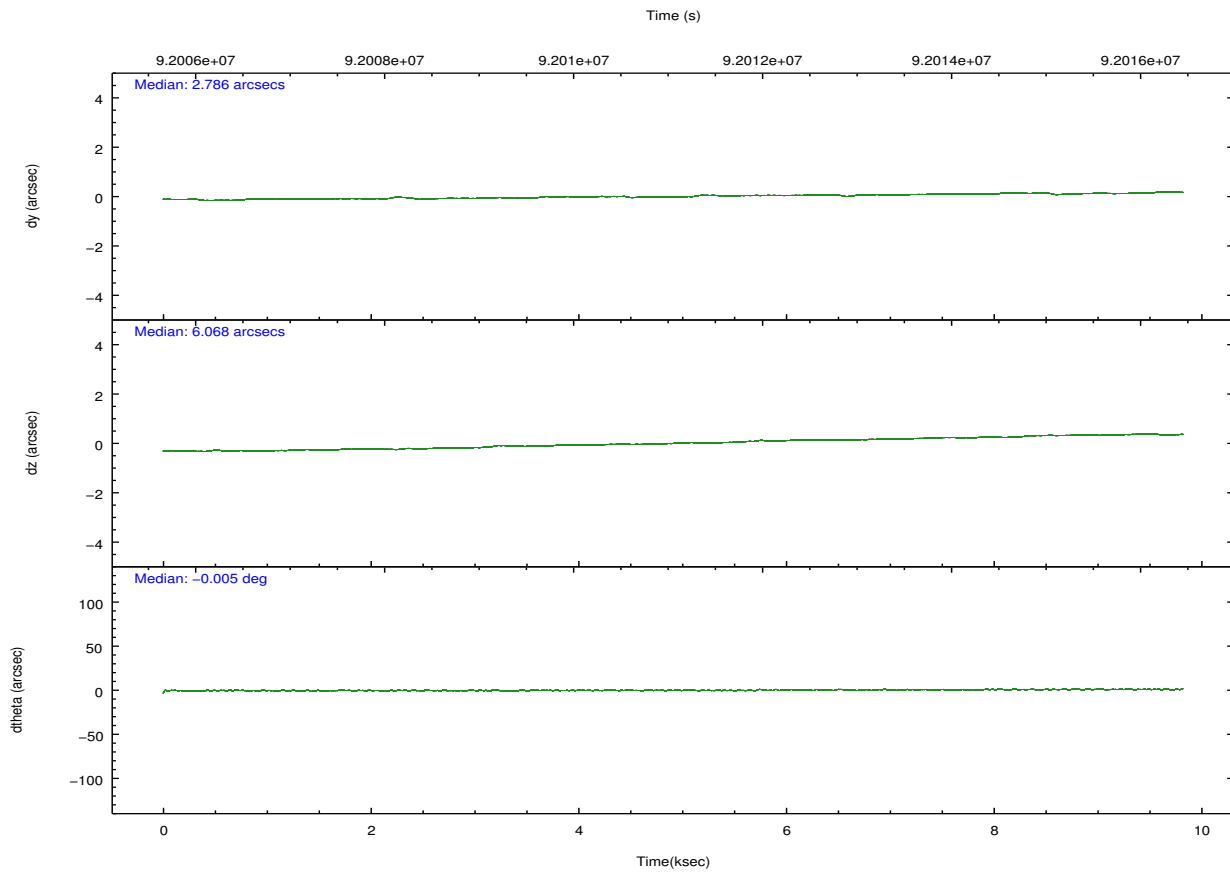
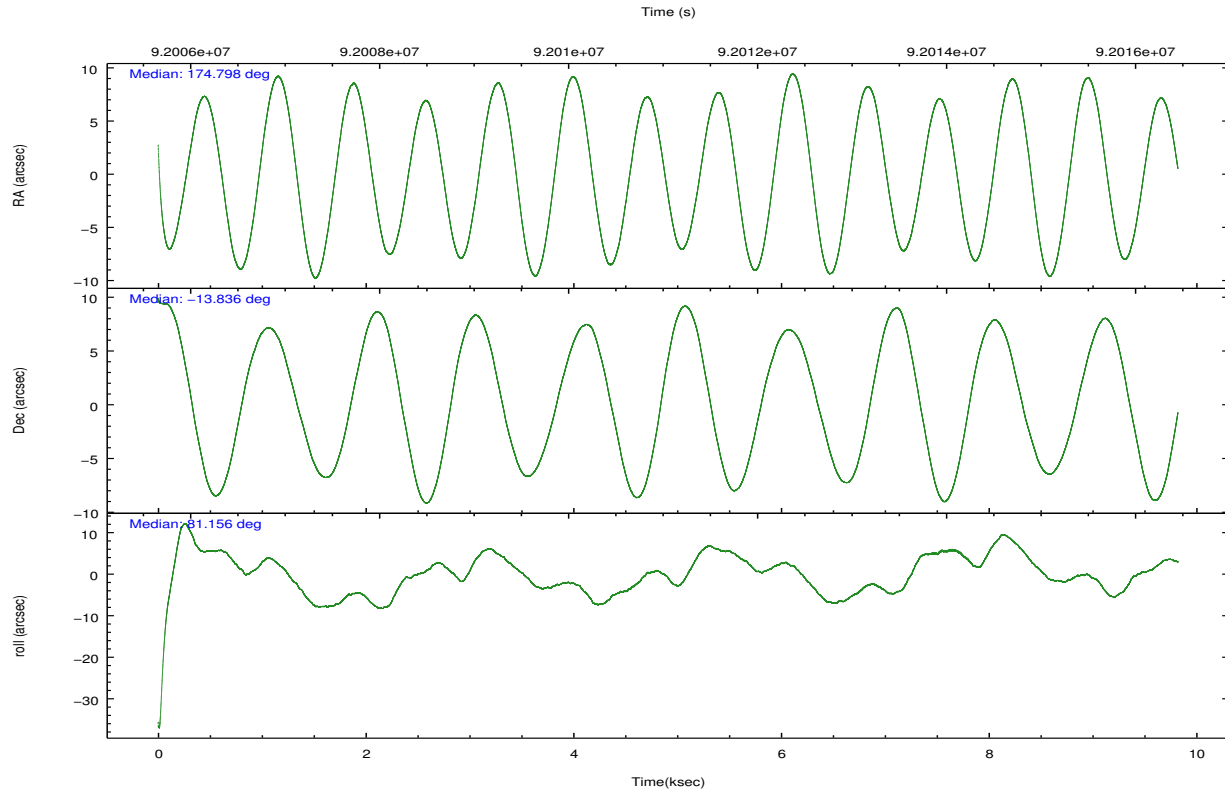
| | ccd 7 |
|----------------|--------------|
| grade 0 events | 1932 |
| | 13% |
| grade 1 events | 21 |
| | 0% |
| grade 2 events | 1899 |
| | 13% |
| grade 3 events | 1124 |
| | 8% |
| grade 4 events | 1040 |
| | 7% |
| grade 5 events | 986 |
| | 7% |
| grade 6 events | 2673 |
| | 19% |
| grade 7 events | 4230 |
| | 30% |

2.2 Compared Parameters

| Parameter | Planned | Actual | Parameter | Planned | Actual |
|--------------------------------------|---------------------|----------------------|---------------------------------------|-----------|---------|
| Instrument | ACIS | ACIS | Obspar format version number | 7 | 7 |
| Detector | ACIS-7 | ACIS-7 | Obspar file type | PREDICTED | ACTUAL |
| Grating | NONE | NONE | Obspar update status | NONE | UPDATED |
| Data mode | FAINT | FAINT | Number of optional ACIS chips dropped | 0 | 0 |
| Observation mode | POINTING | POINTING | On-chip summing requested | N | N |
| [deg] Pointing RA | 174.808293 | 174.7979327964594 | Subarray requested | CUSTOM | 1/8 |
| [deg] Pointing Dec | -13.861666 | -13.83626435803117 | Subarray start row | 449 | 449 |
| [deg] Pointing Roll | 81.003280 | 81.15738784015389 | Subarray row count | 128 | 128 |
| [deg] Roll angle | 150.000000 | 150.000000 | Alternating exposures requested | N | N |
| [deg] Roll tolerance | 69.000000 | 69.000000 | [s] Primary exposure time | 0.000000 | 0.4 |
| Roll constraint allows 180D rotation | N | N | | | |
| [mm] SIM focus pos | -0.684267 | -0.6828225247311905 | | | |
| [mm] SIM defocus | 0 | 0.001444936568705701 | | | |
| [mm] SIM translation stage pos | -190.132523 | -190.1400660498719 | | | |
| [mm] SIM translation stage offset | 0 | 0.00754346686406393 | | | |
| [s] Observation start time (MET) | 92006361.184000 | 92005356.685945 | | | |
| Observation start date | 2000-11-30T21:18:17 | 2000-11-30T21:02:36 | | | |
| [s] Observation end time (MET) | 92015961.184000 | 92016789.023882 | | | |
| Observation end date | 2000-11-30T23:58:17 | 2000-12-01T00:13:09 | | | |
| Read mode | TIMED | TIMED | | | |

2.3 Aspect



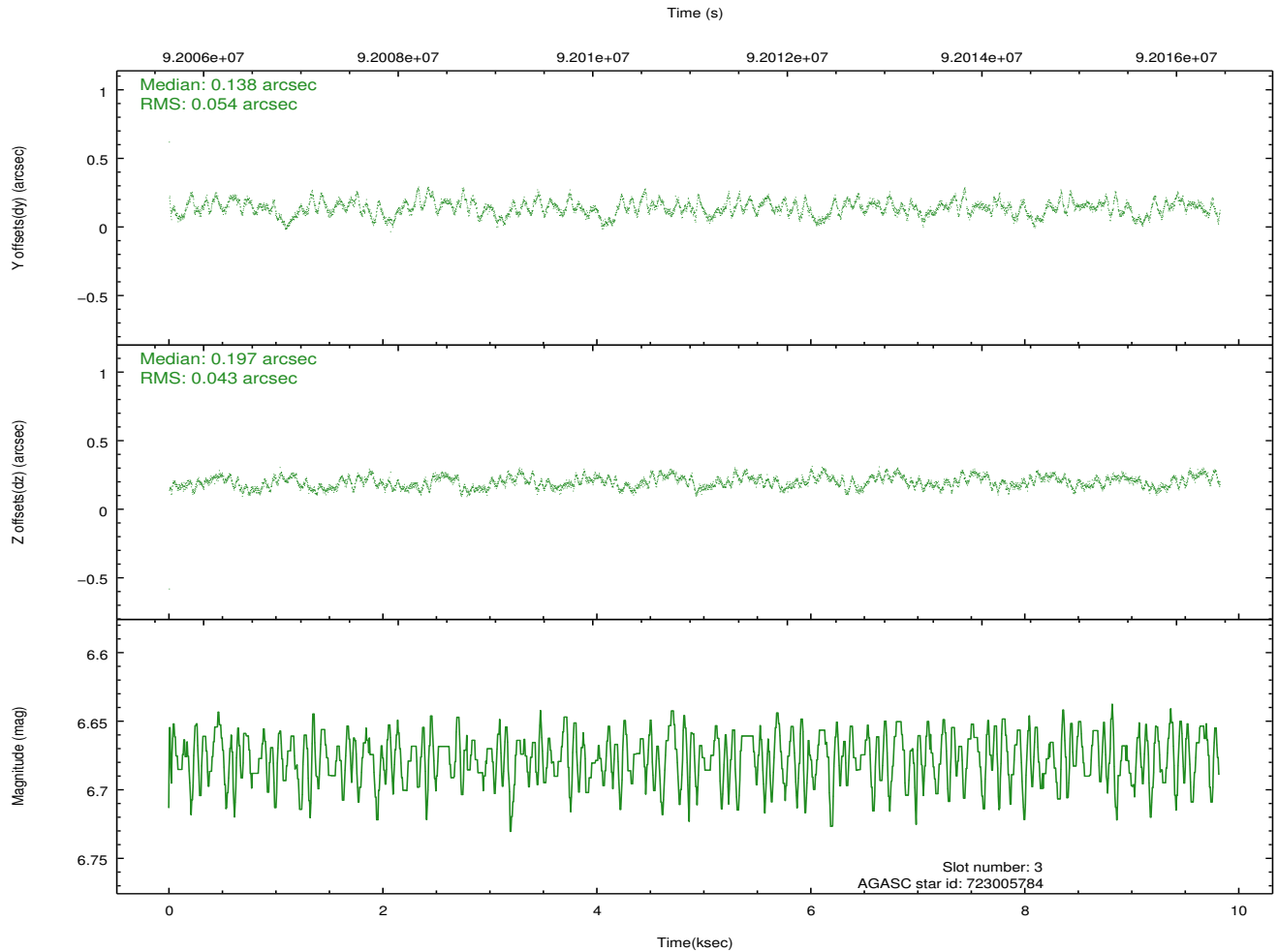
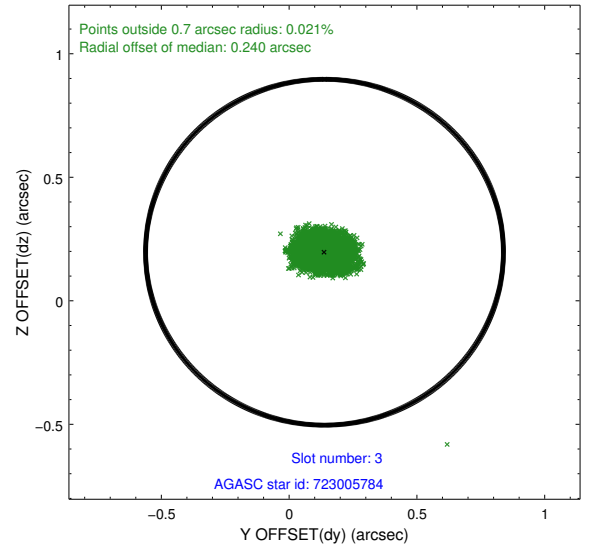
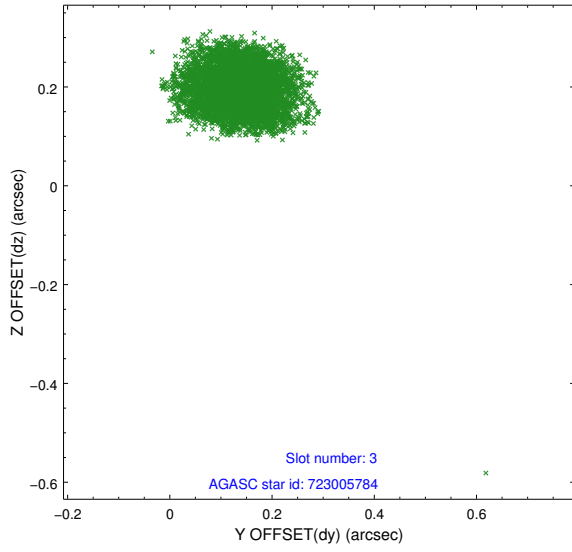


Slot Statistics

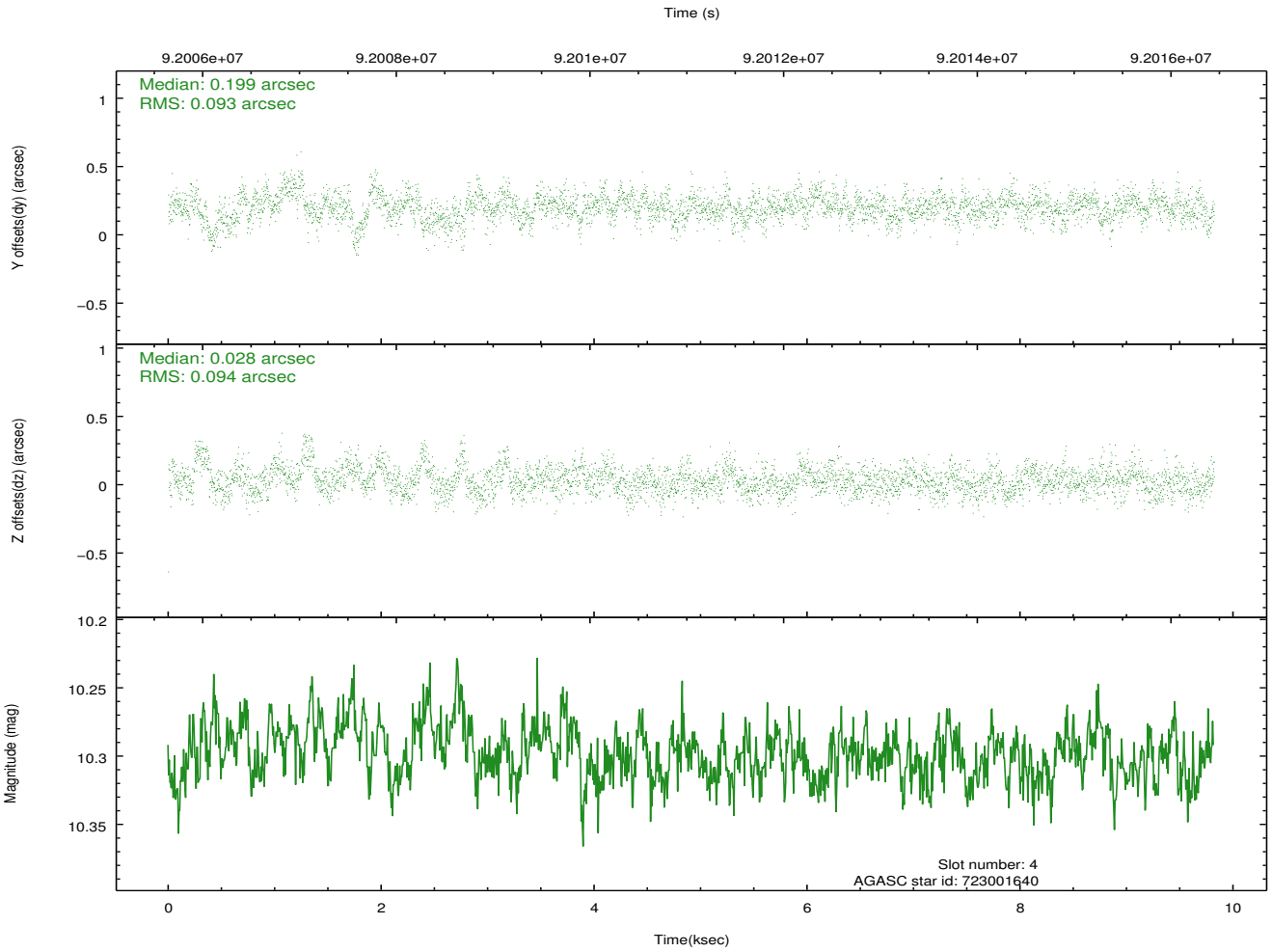
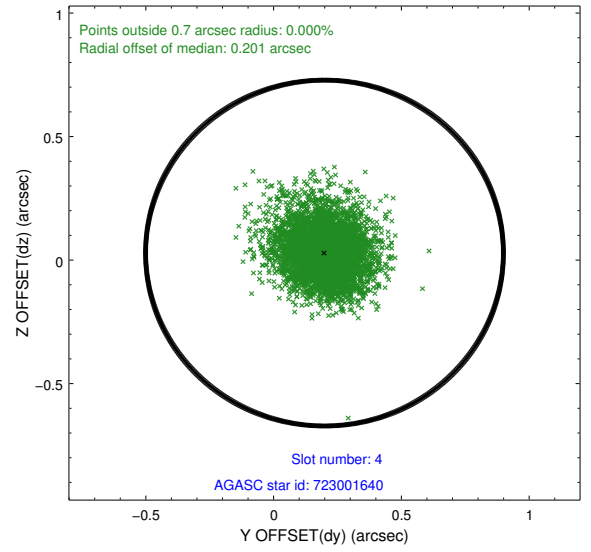
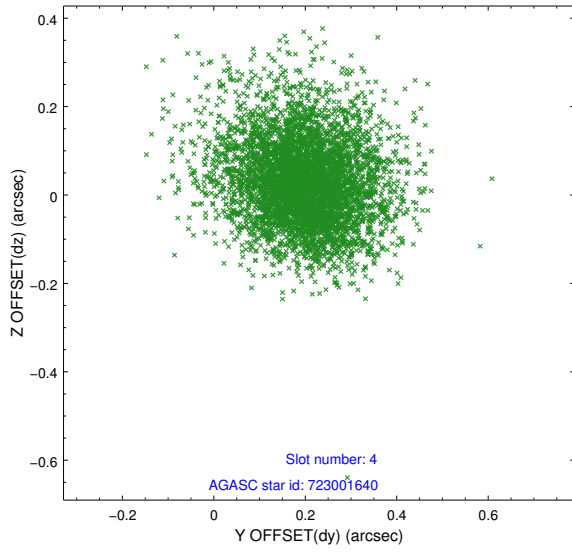
| slot | status | id | mag | n_pts | med_dy | med_dz | dr1 | dr2 | ra | dec | mean_y | mean_z |
|------|--------|-----------|-------|-------|--------|--------|-------|-------|------------|------------|----------|----------|
| 0 | FID | ACIS-S-2 | 7.11 | 2396 | -0.033 | 0.001 | 0.008 | 0.013 | 0.000000 | 0.000000 | -755.44 | -1727.23 |
| 1 | FID | ACIS-S-4 | 7.21 | 2396 | -0.001 | 0.015 | 0.007 | 0.012 | 0.000000 | 0.000000 | 2157.60 | 180.75 |
| 2 | FID | ACIS-S-5 | 7.23 | 2396 | 0.003 | -0.007 | 0.007 | 0.011 | 0.000000 | 0.000000 | -1807.57 | 174.96 |
| 3 | GUIDE | 723005784 | 6.68 | 4792 | 0.138 | 0.197 | 0.074 | 0.115 | 174.963005 | -14.468539 | -2074.00 | -873.70 |
| 4 | GUIDE | 723001640 | 10.30 | 4791 | 0.199 | 0.028 | 0.139 | 0.234 | 174.422337 | -14.161760 | -1279.56 | 1161.87 |
| 5 | GUIDE | 722999344 | 10.52 | 4790 | 0.095 | -0.285 | 0.149 | 0.248 | 174.163417 | -13.986113 | -798.46 | 2154.92 |
| 6 | GUIDE | 722997592 | 9.57 | 4790 | -0.265 | 0.078 | 0.094 | 0.150 | 174.533385 | -13.192821 | 2226.10 | 1329.25 |
| 7 | GUIDE | 722996664 | 9.00 | 4791 | -0.166 | -0.026 | 0.070 | 0.118 | 174.774975 | -13.414720 | 1570.82 | 367.64 |

2.4 Star Slots

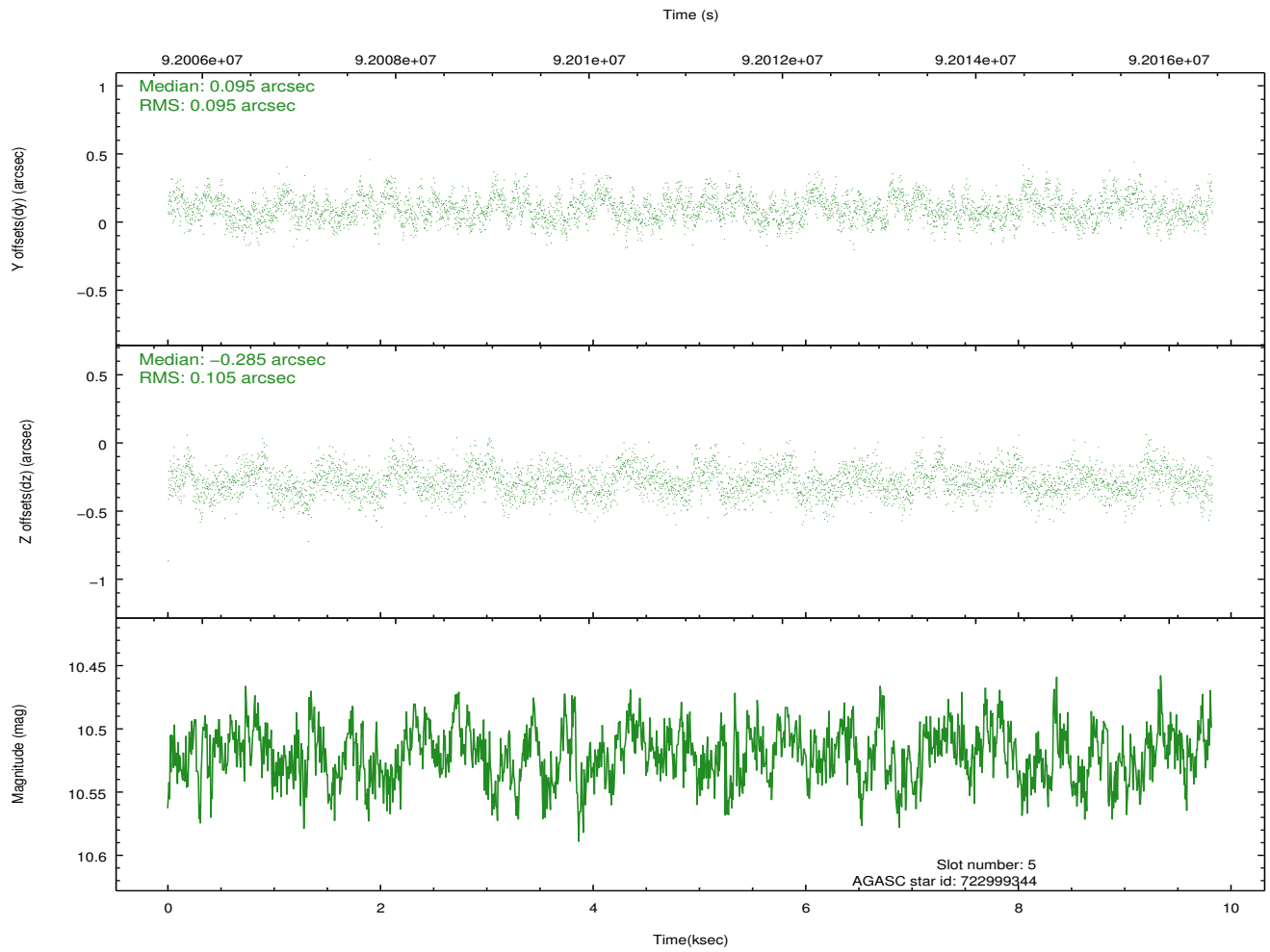
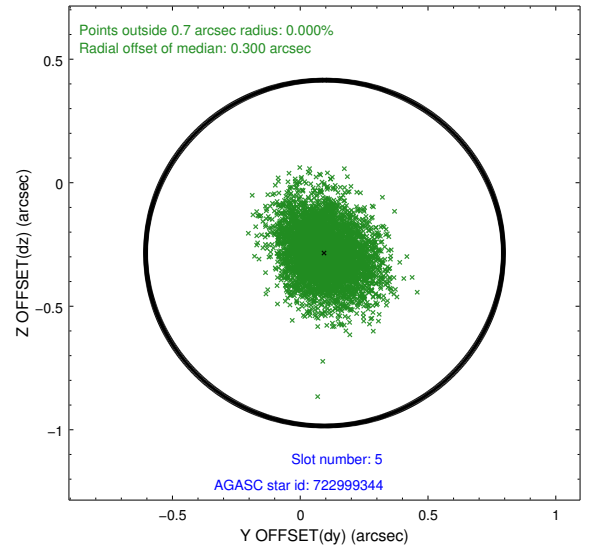
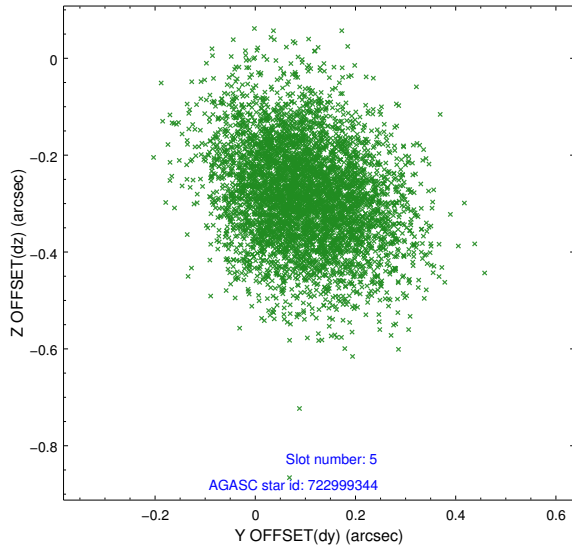
2.4.1 Slot 3



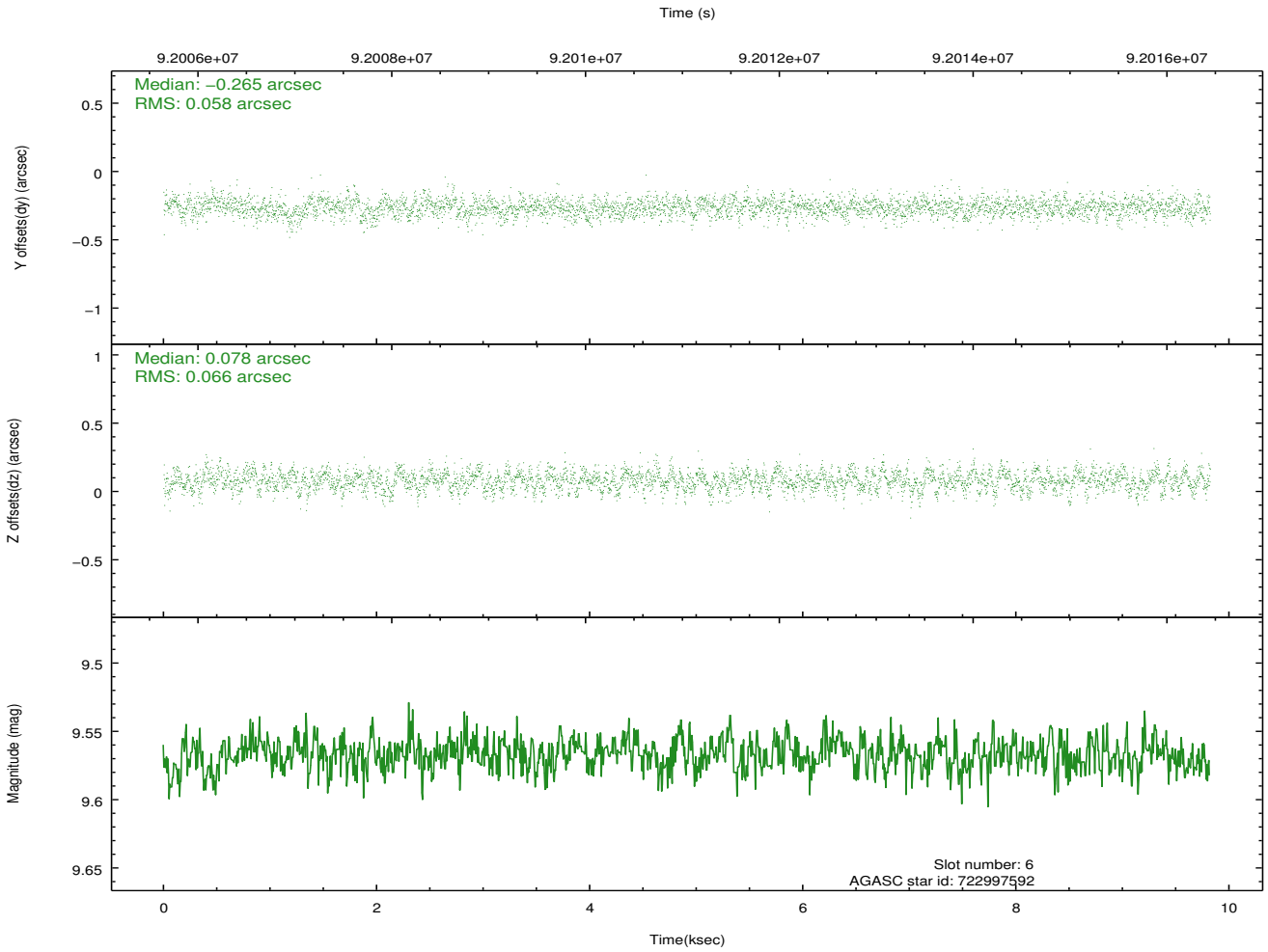
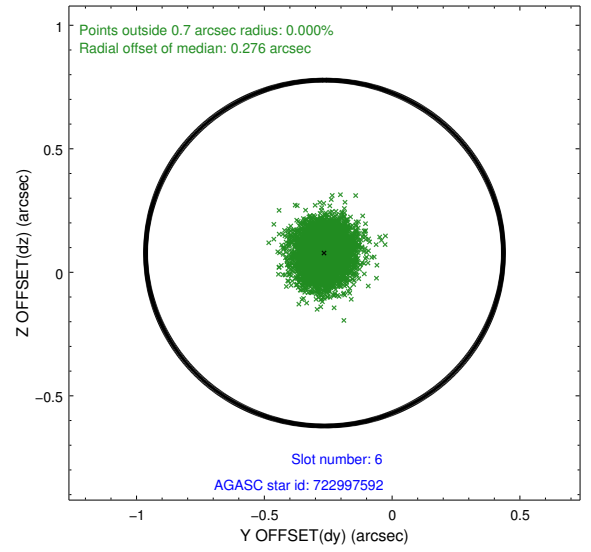
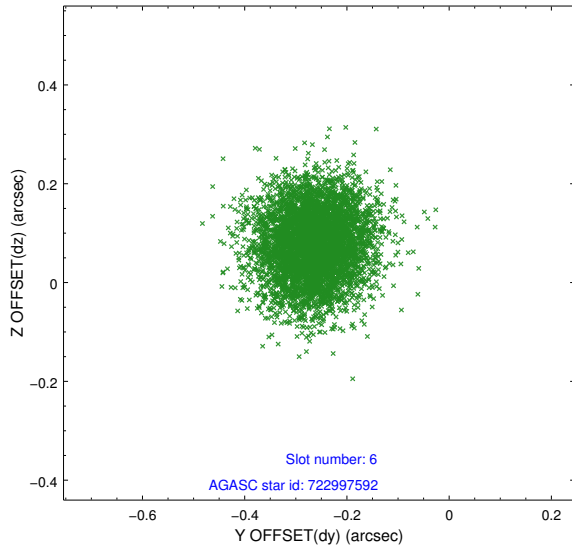
2.4.2 Slot 4



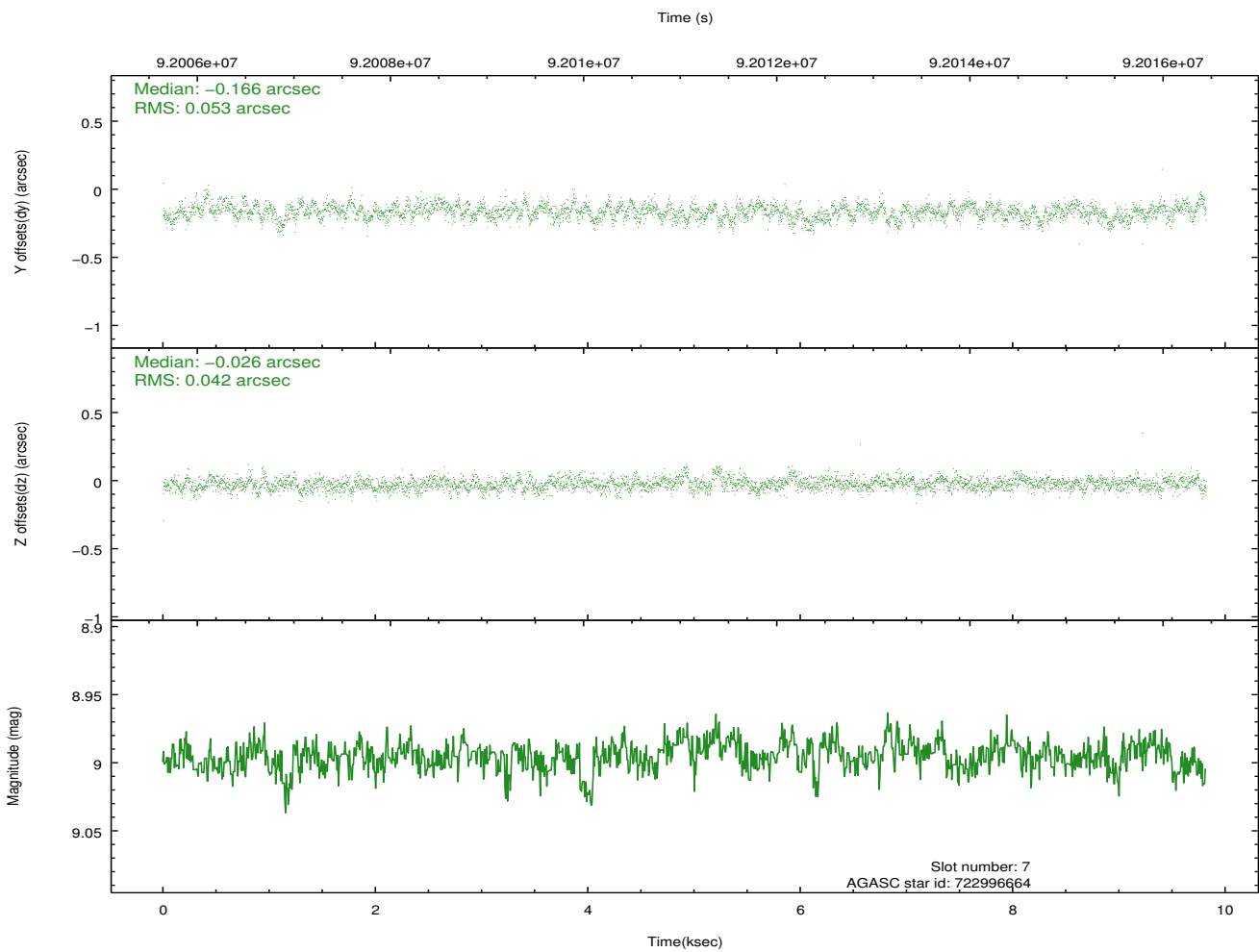
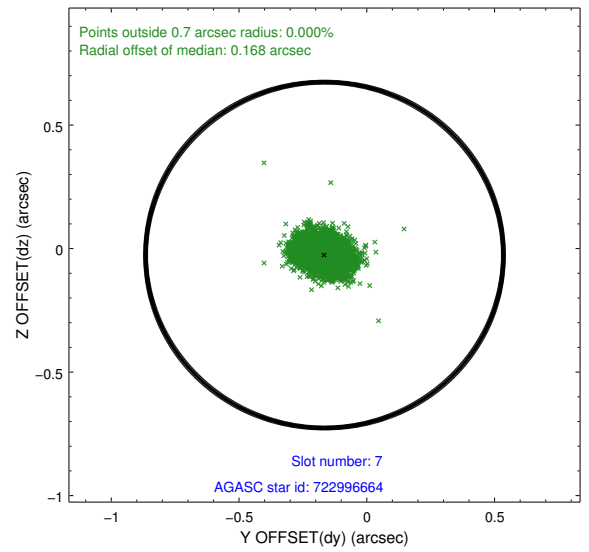
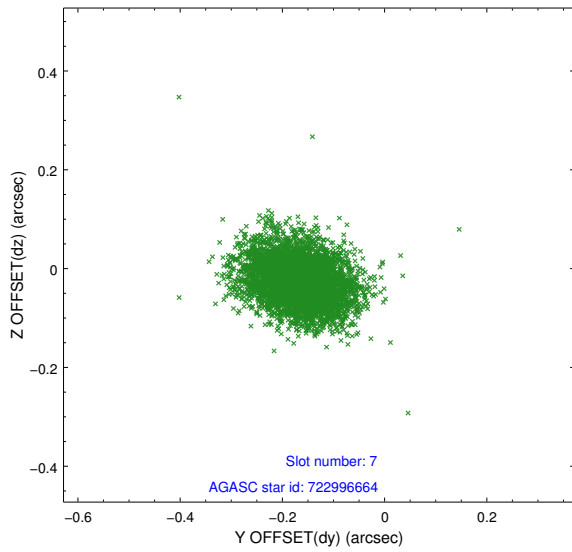
2.4.3 Slot 5



2.4.4 Slot 6

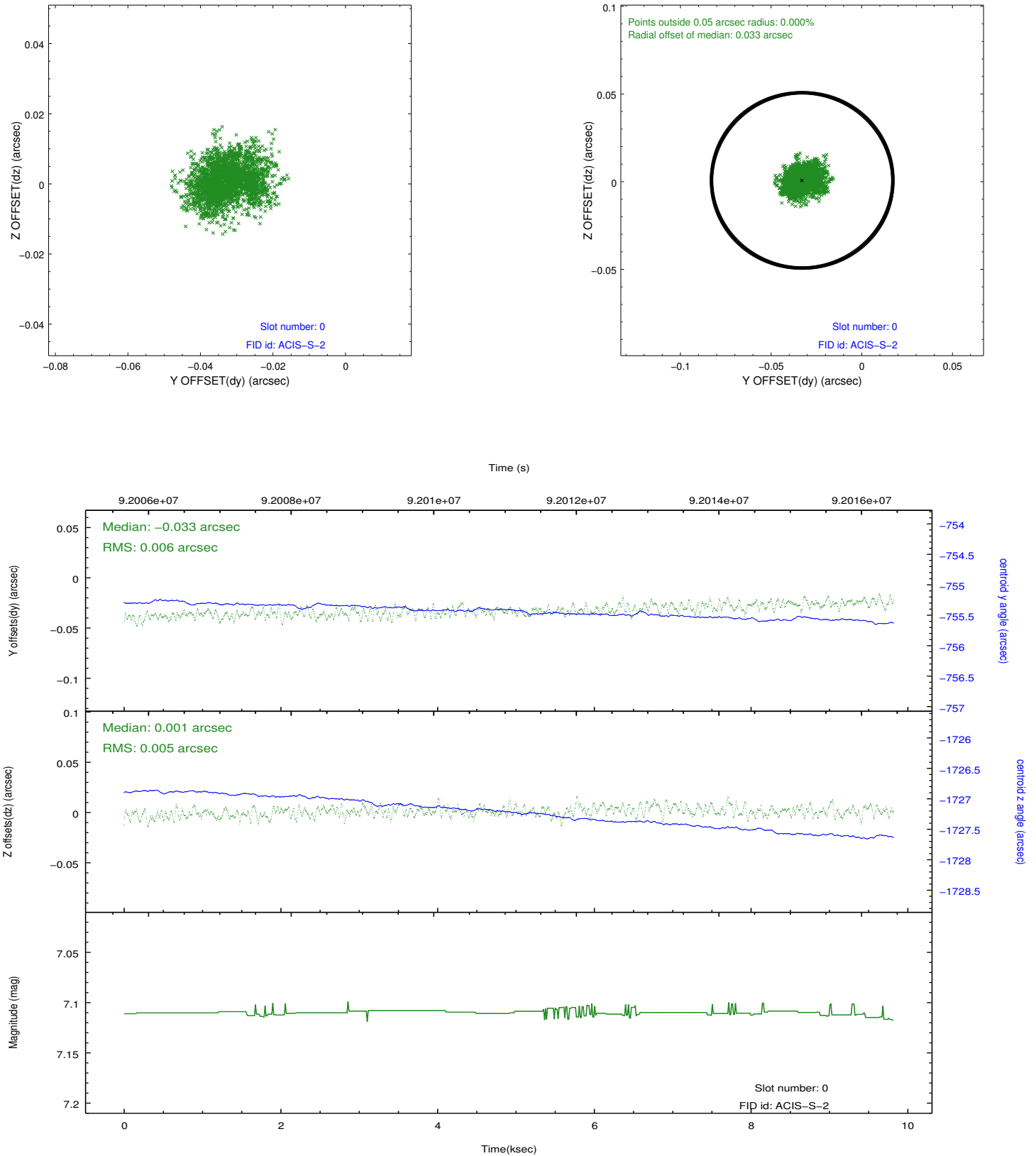


2.4.5 Slot 7

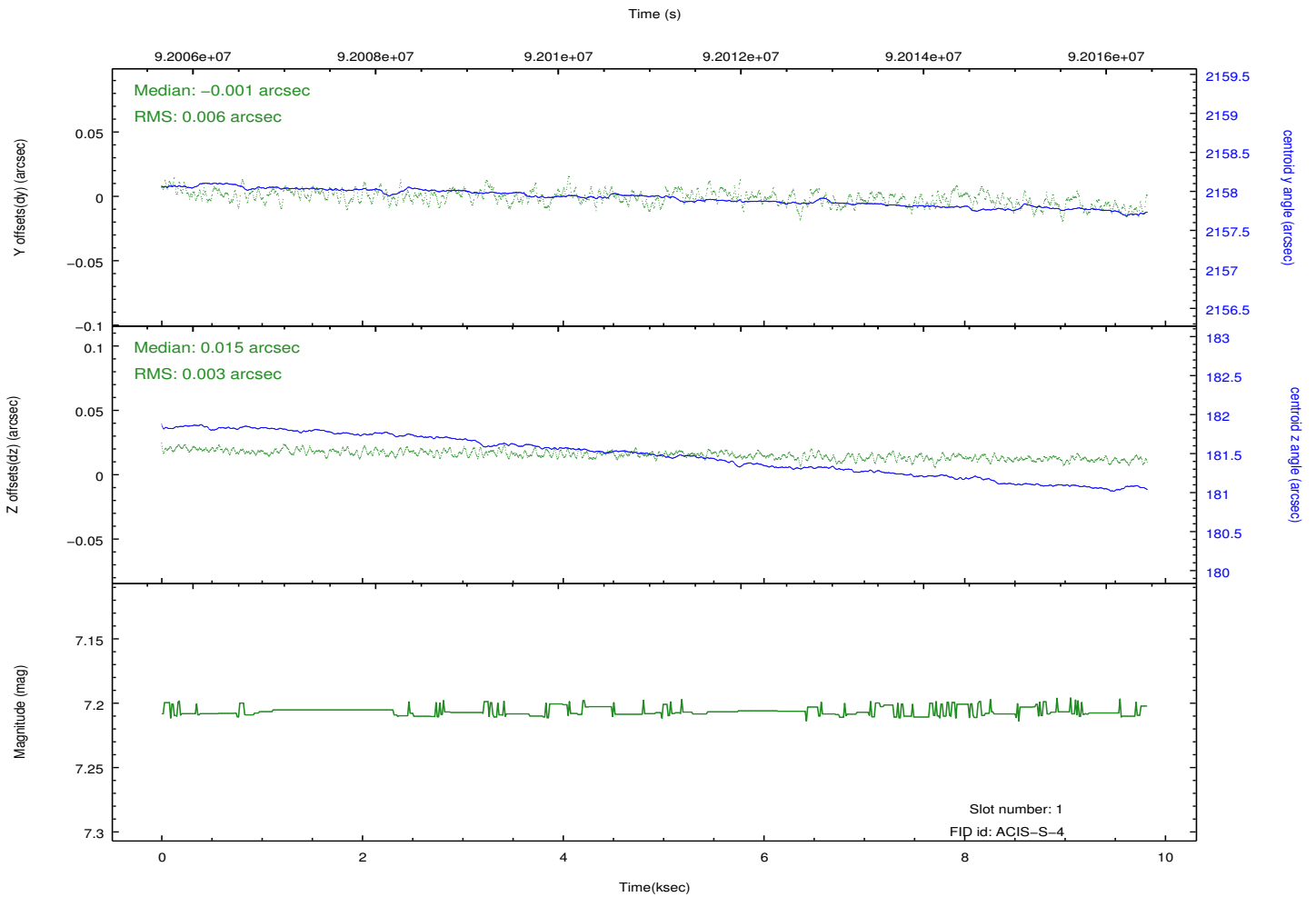
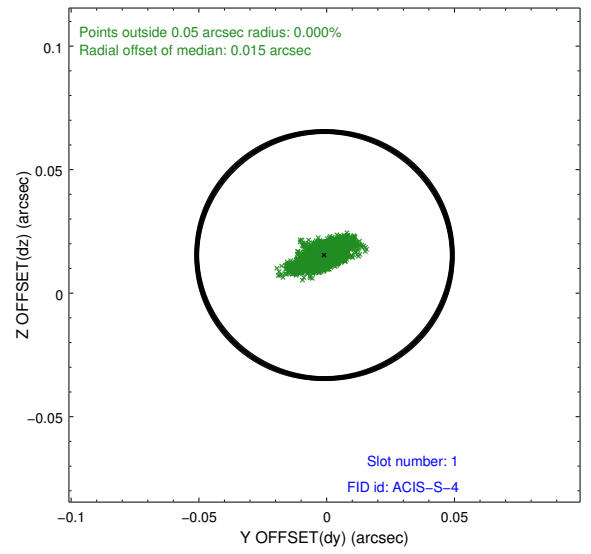
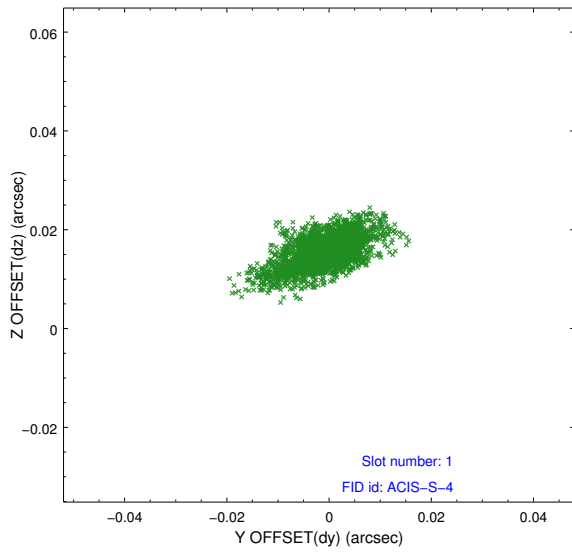


2.5 FID Slots

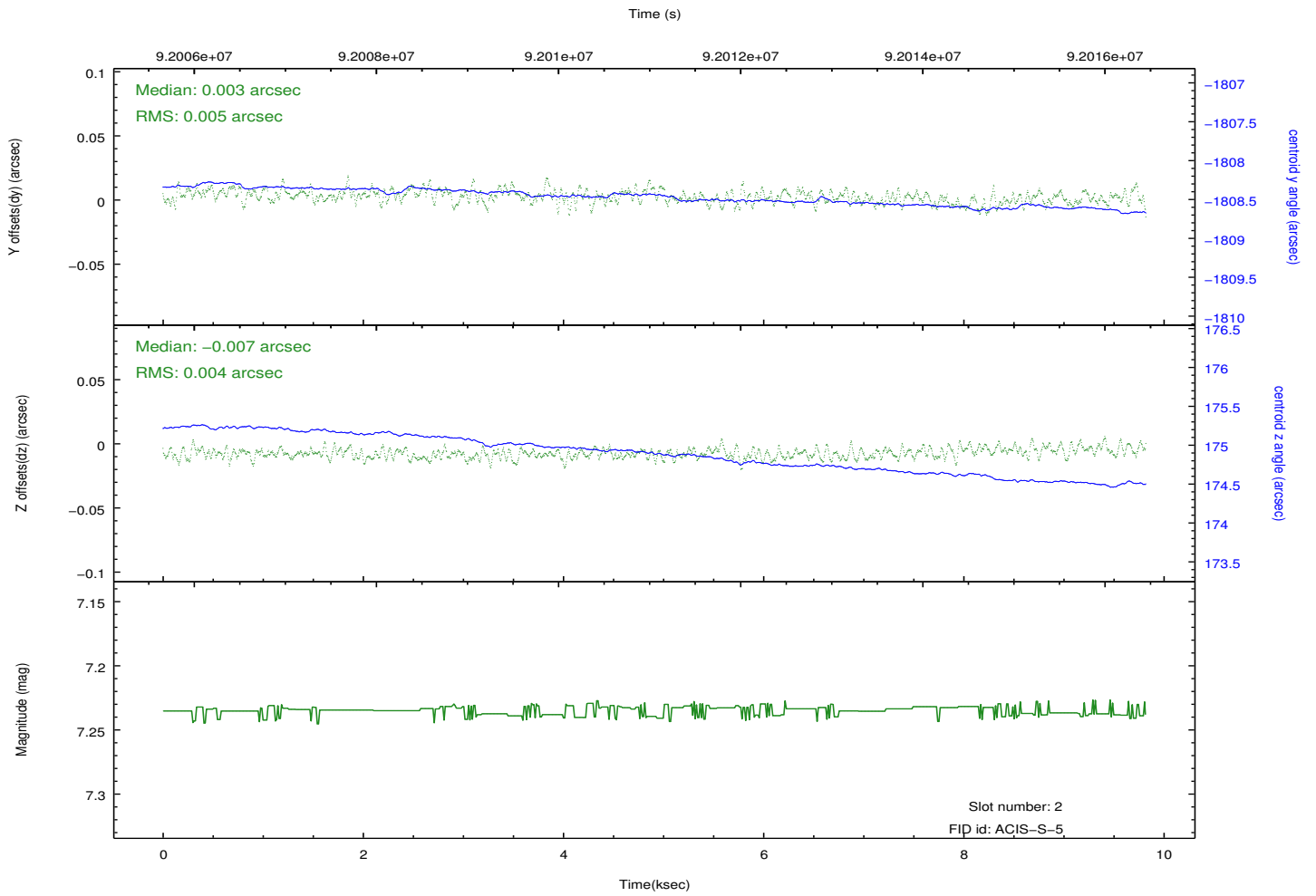
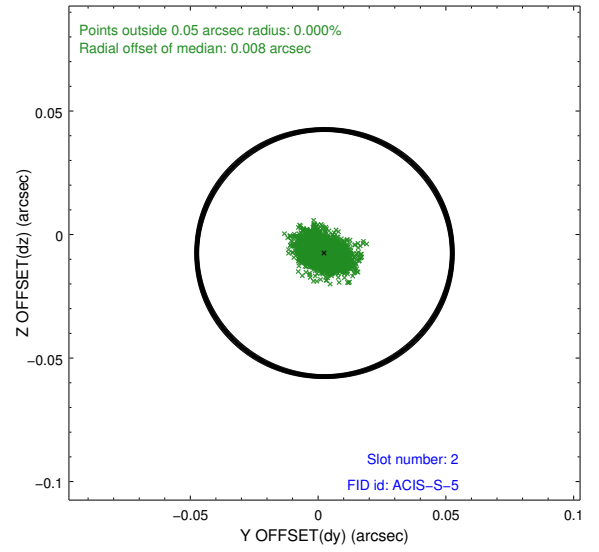
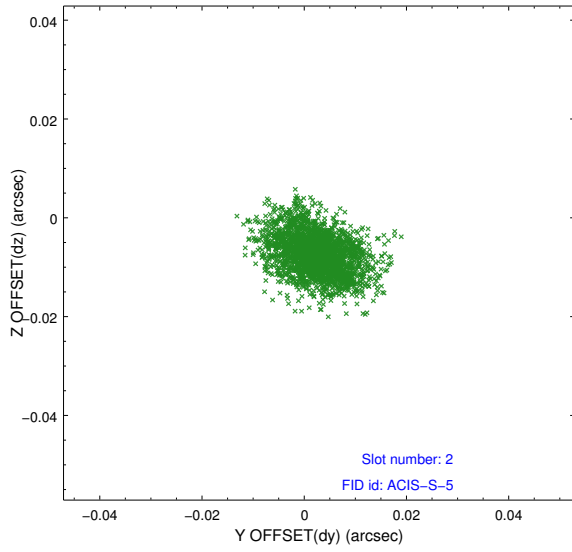
2.5.1 Slot 0



2.5.2 Slot 1



2.5.3 Slot 2



A Summary

A.1 Status

| | |
|----------------------------|---------------|
| V&V Scientist | Beth Sundheim |
| V&V Date (YYYY-MM-DD) | 2012.09.11 |
| V&V Edition | 1 |
| V&V Disposition and Status | OK |
| V&V Charge Time | 9.82 |

A.2 Comments

Roll preference met.