

# V&V Reference Report

## L2 ASCDS Version : 8.4.5

Observation 2178 - L2 Version 3  
Chandra X-Ray Center

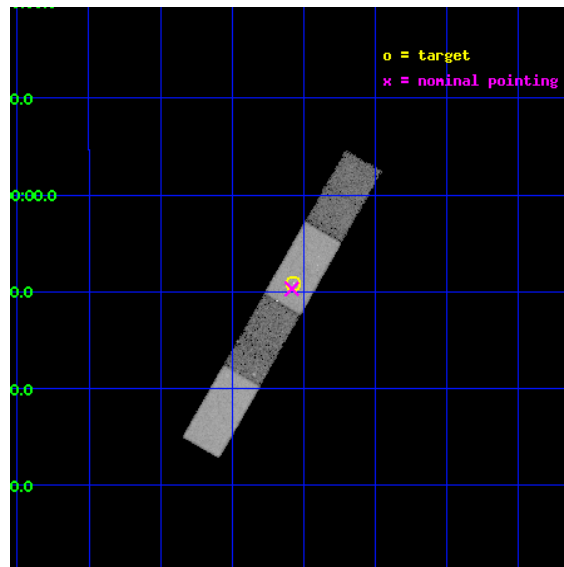
L2 Processing Date : Sep 3 2012

## Contents

<b>1</b>	<b>Front</b>	<b>2</b>
<b>2</b>	<b>OBI</b>	<b>3</b>
2.1	OBI . . . . .	3
2.1.1	Images . . . . .	3
2.1.2	Bias . . . . .	3
2.1.3	Parameters . . . . .	4
2.1.4	Events . . . . .	4
2.2	Compared Parameters . . . . .	5
2.3	Aspect . . . . .	6
2.4	Star Slots . . . . .	9
2.4.1	Slot 3 . . . . .	9
2.4.2	Slot 4 . . . . .	10
2.4.3	Slot 5 . . . . .	11
2.4.4	Slot 6 . . . . .	12
2.4.5	Slot 7 . . . . .	13
2.5	FID Slots . . . . .	14
2.5.1	Slot 0 . . . . .	14
2.5.2	Slot 1 . . . . .	15
2.5.3	Slot 2 . . . . .	16
<b>A</b>	<b>Summary</b>	<b>17</b>
A.1	Status . . . . .	17
A.2	Comments . . . . .	17

# 1 Front

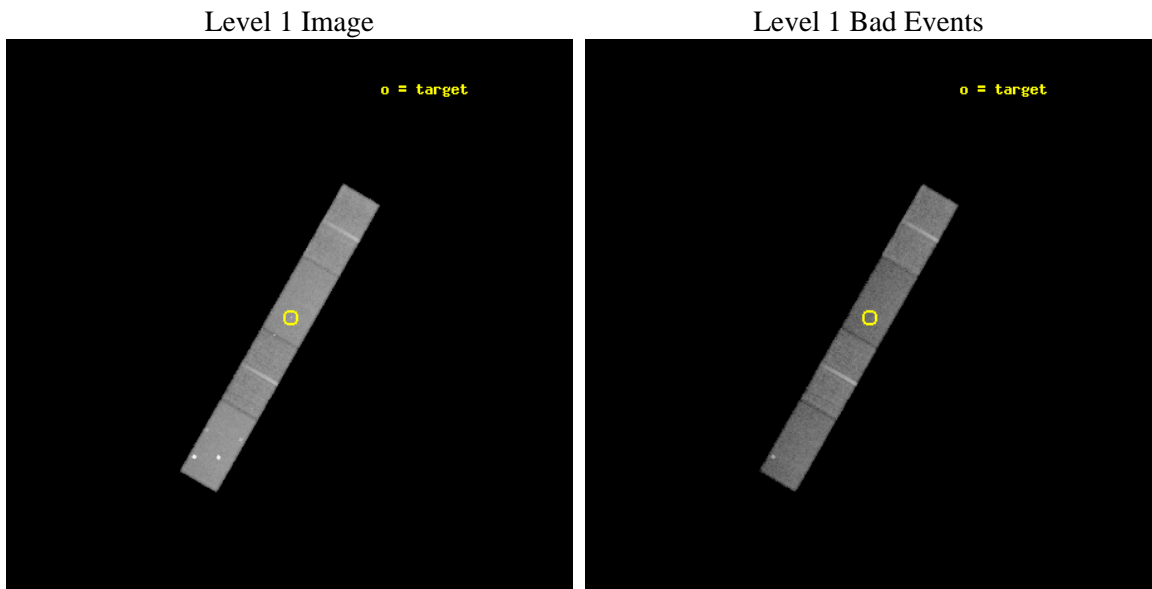
seq_num	700368	Sequence number
obs_id	2178	Observation id
title	SYNCHROTRON SELF-COMPTON X-RAYS FROM OPTICAL JETS IN ACTIVE GALACTIC NUCLEI	Proposal title
observer	Prof Mark Birkinshaw	Principal investigator
object	3C15	Source name
dtcycle	0	&#160
cycle	P	events from which exps? Prim/Second/Both
ra_targ	9.2675	Observer's specified target RA [deg]
dec_targ	-1.15225	Observer's specified target Dec [deg]
ra_nom	9.2707852356054	Nominal RA [deg]
dec_nom	-1.1615334829255	Nominal Dec [deg]
roll_nom	299.90833844307	Nominal Roll [deg]
revision	3	Processing version of data
ontime	28179.200049385	Sum of GTIs [s]
liveltime	27514.956625899	Livetime [s]
ontime5	28179.200049385	Sum of GTIs [s]
ontime6	28179.200049385	Sum of GTIs [s]
ontime7	28179.200049385	Sum of GTIs [s]
ontime8	28179.200049385	Sum of GTIs [s]
l2events	121089	Number of level 2 events



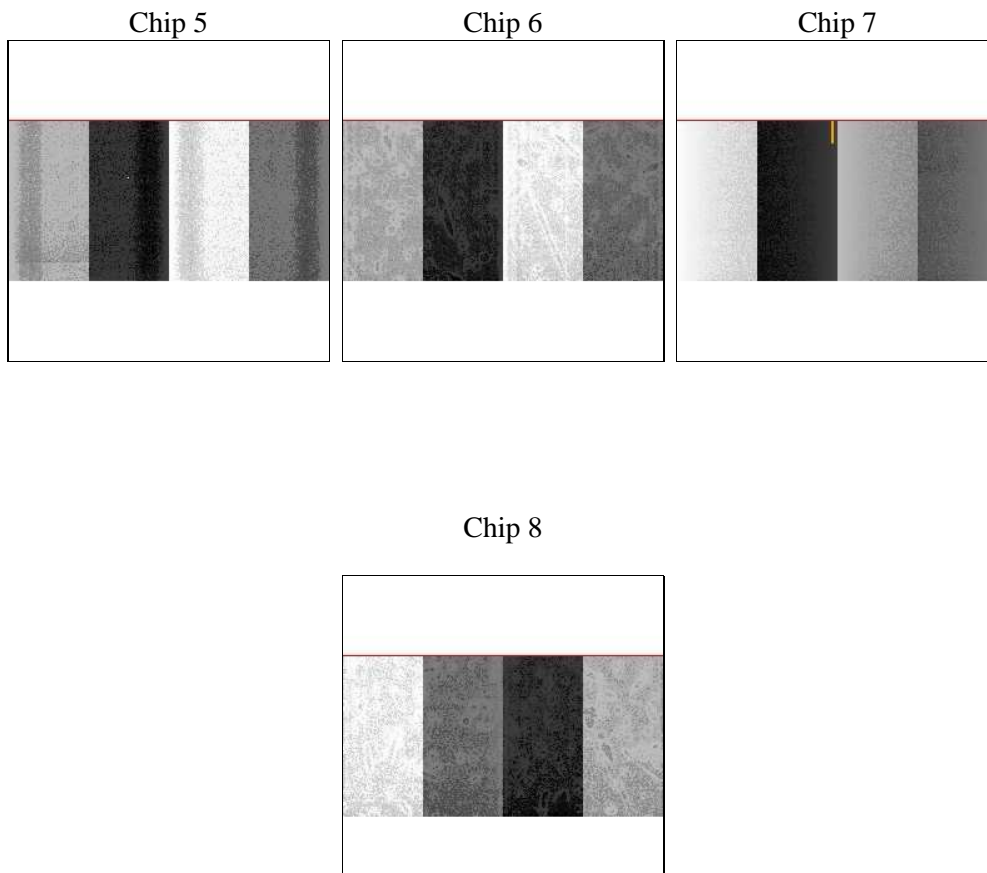
## 2 OBI

### 2.1 OBI

#### 2.1.1 Images



#### 2.1.2 Bias



### 2.1.3 Parameters

obi_num	0	Obi number	sched_exp_time	28000.000000	[s] Scheduled observation exposure time
ascdsver	8.4.5	Processing system revision	ontime	28179.200049385	Sum of GTIs [s]
caldbver	4.5.1.1	&#160	ontime5	28179.200049385	Sum of GTIs [s]
date	2012-09-03T03:38:05	Date and time of file creation	ontime6	28179.200049385	Sum of GTIs [s]
revision	3	Processing version of data	ontime7	28179.200049385	Sum of GTIs [s]
			ontime8	28179.200049385	Sum of GTIs [s]
			l1events	487296	Number of level 1 events

### 2.1.4 Events

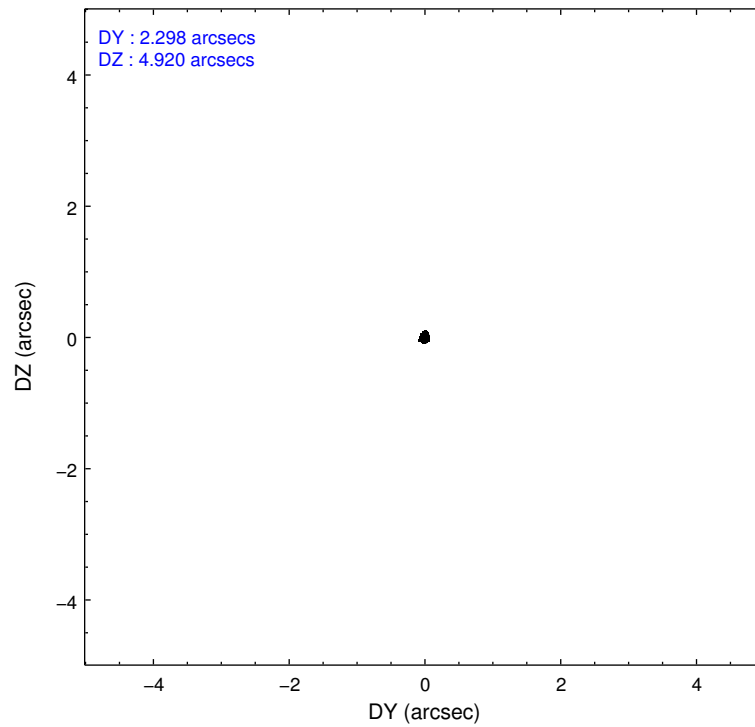
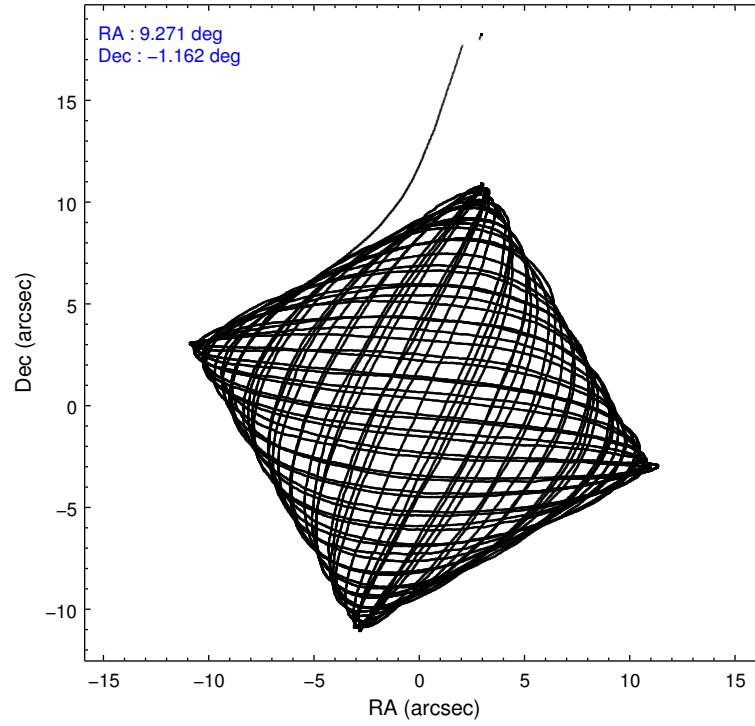
	ccd 5	ccd 6	ccd 7	ccd 8
level 1 events	149573	99639	114363	123721
rejected events	67409	88548	64113	101033
rejected %	45%	88%	56%	81%

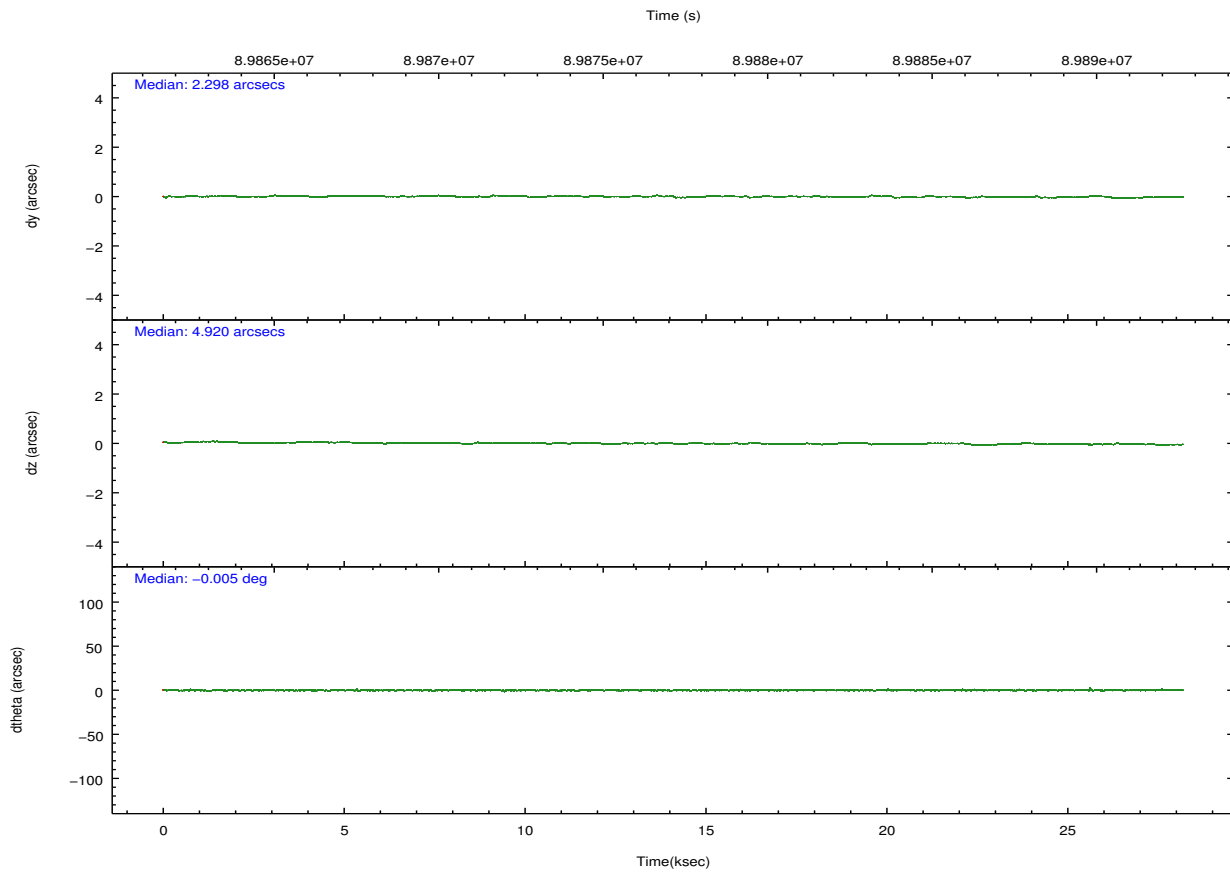
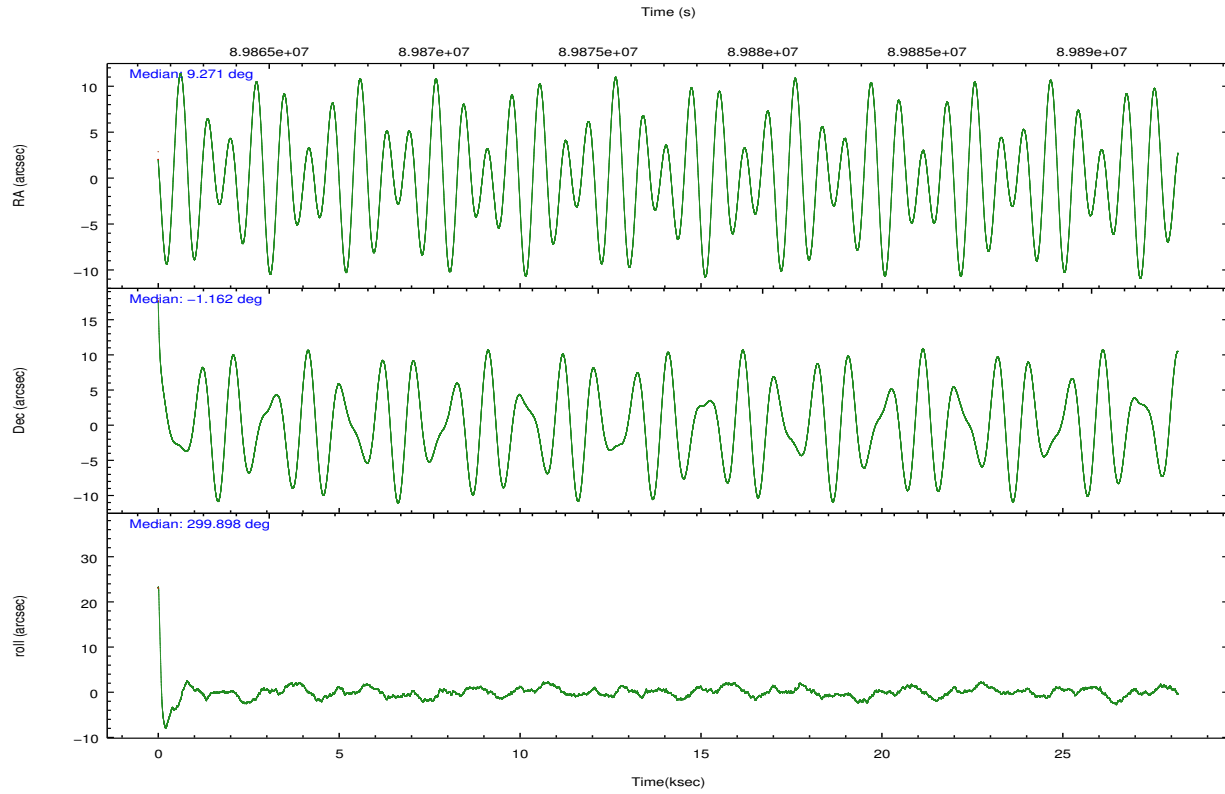
	ccd 5	ccd 6	ccd 7	ccd 8
grade 0 events	26124	4649	5651	6985
	17%	4%	4%	5%
grade 1 events	1210	32	102	64
	0%	0%	0%	0%
grade 2 events	22981	2075	10281	4829
	15%	2%	8%	3%
grade 3 events	3341	1368	5137	2714
	2%	1%	4%	2%
grade 4 events	3062	1325	5049	2474
	2%	1%	4%	1%
grade 5 events	10007	3563	10636	4493
	6%	3%	9%	3%
grade 6 events	28508	1930	25153	6118
	19%	1%	21%	4%
grade 7 events	54340	84697	52354	96044
	36%	85%	45%	77%

## 2.2 Compared Parameters

Parameter	Planned	Actual	Parameter	Planned	Actual
Instrument	ACIS	ACIS	Obspar format version number	7	7
Detector	ACIS-5678	ACIS-5678	Obspar file type	PREDICTED	ACTUAL
Grating	NONE	NONE	Obspar update status	NONE	UPDATED
Data mode	FAINT	FAINT	Number of optional ACIS chips dropped	0	0
Observation mode	POINTING	POINTING	On-chip summing requested	N	N
[deg] Pointing RA	9.247037	9.270785235605375	Subarray requested	CUSTOM	1/2
[deg] Pointing Dec	-1.148013	-1.161533482925461	Subarray start row	257	257
[deg] Pointing Roll	299.751217	299.9083384430745	Subarray row count	512	512
[mm] SIM focus pos	-0.684267	-0.6828225247311905	Alternating exposures requested	N	N
[mm] SIM defocus	0	0.001444936568705701	[s] Primary exposure time	0.000000	1.7
[mm] SIM translation stage pos	-190.132523	-190.1400660498719			
[mm] SIM translation stage offset	0	0.00754346686406393			
[s] Observation start time (MET)	89863212.184000	89862127.216777			
Observation start date	2000-11-06T01:59:08	2000-11-06T01:42:07			
[s] Observation end time (MET)	89891212.184000	89891943.955405			
Observation end date	2000-11-06T09:45:48	2000-11-06T09:59:03			
Read mode	TIMED	TIMED			

## 2.3 Aspect



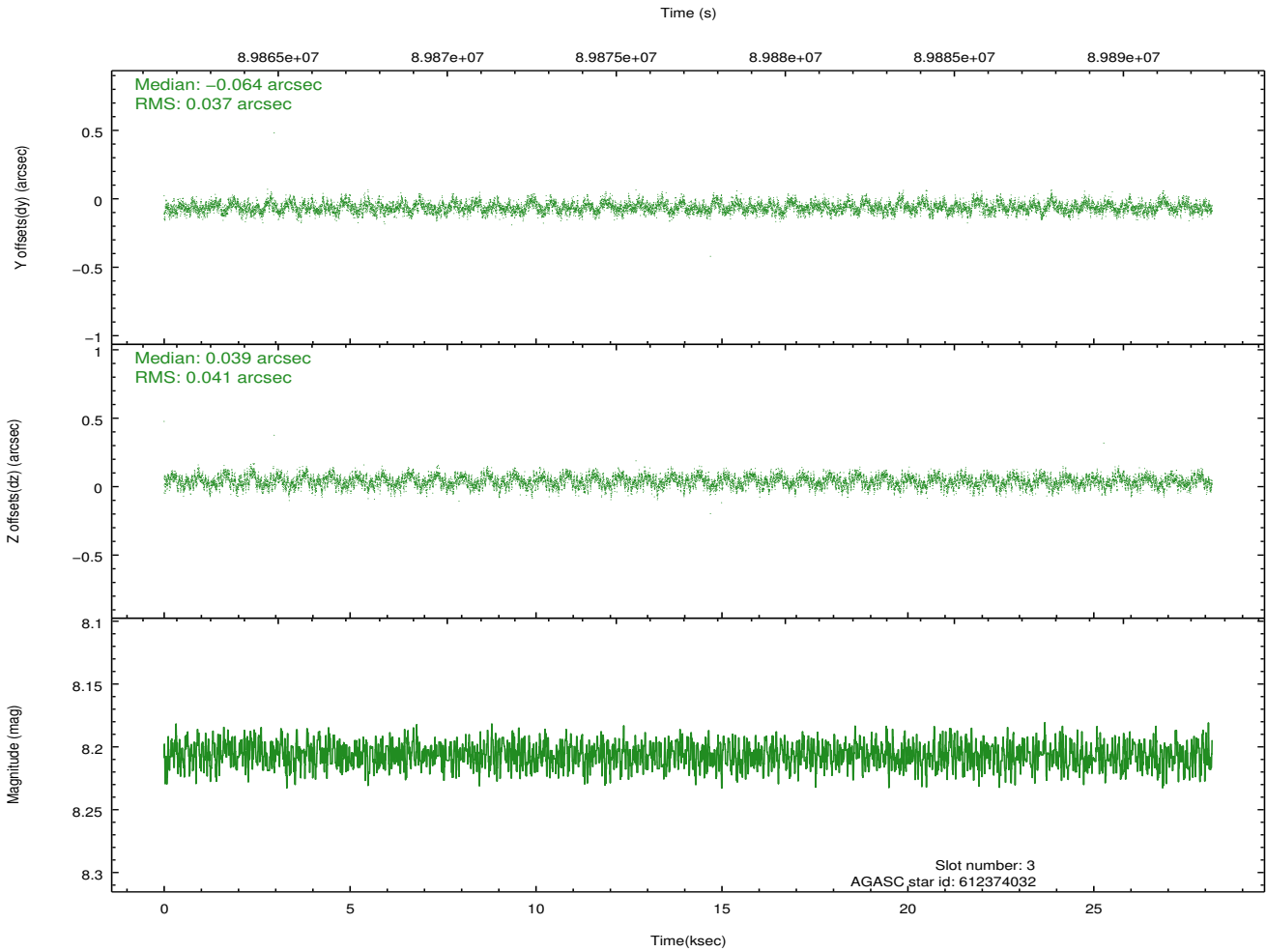
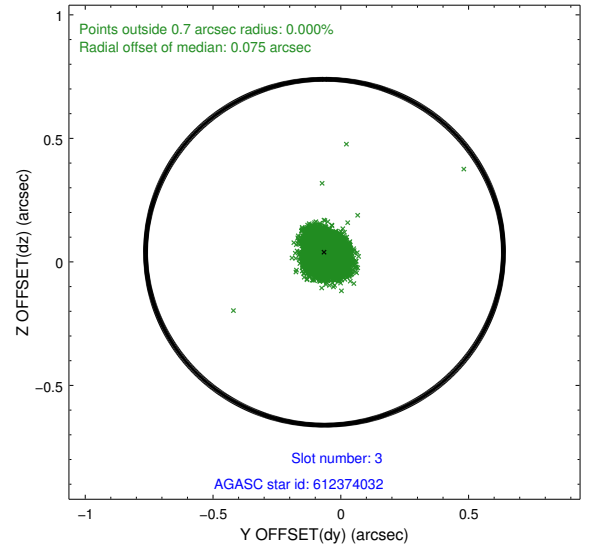
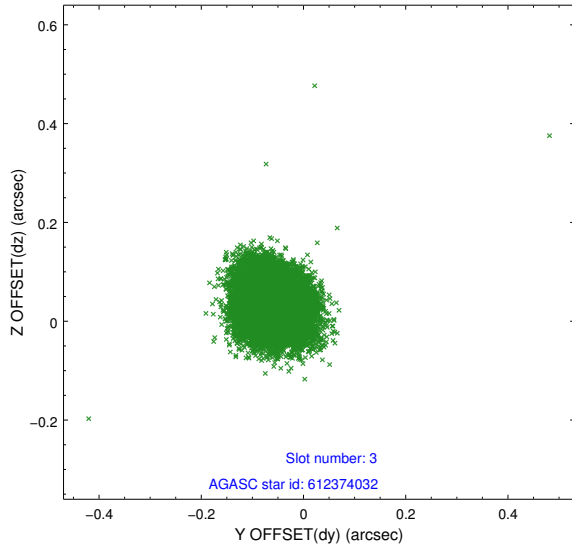


### Slot Statistics

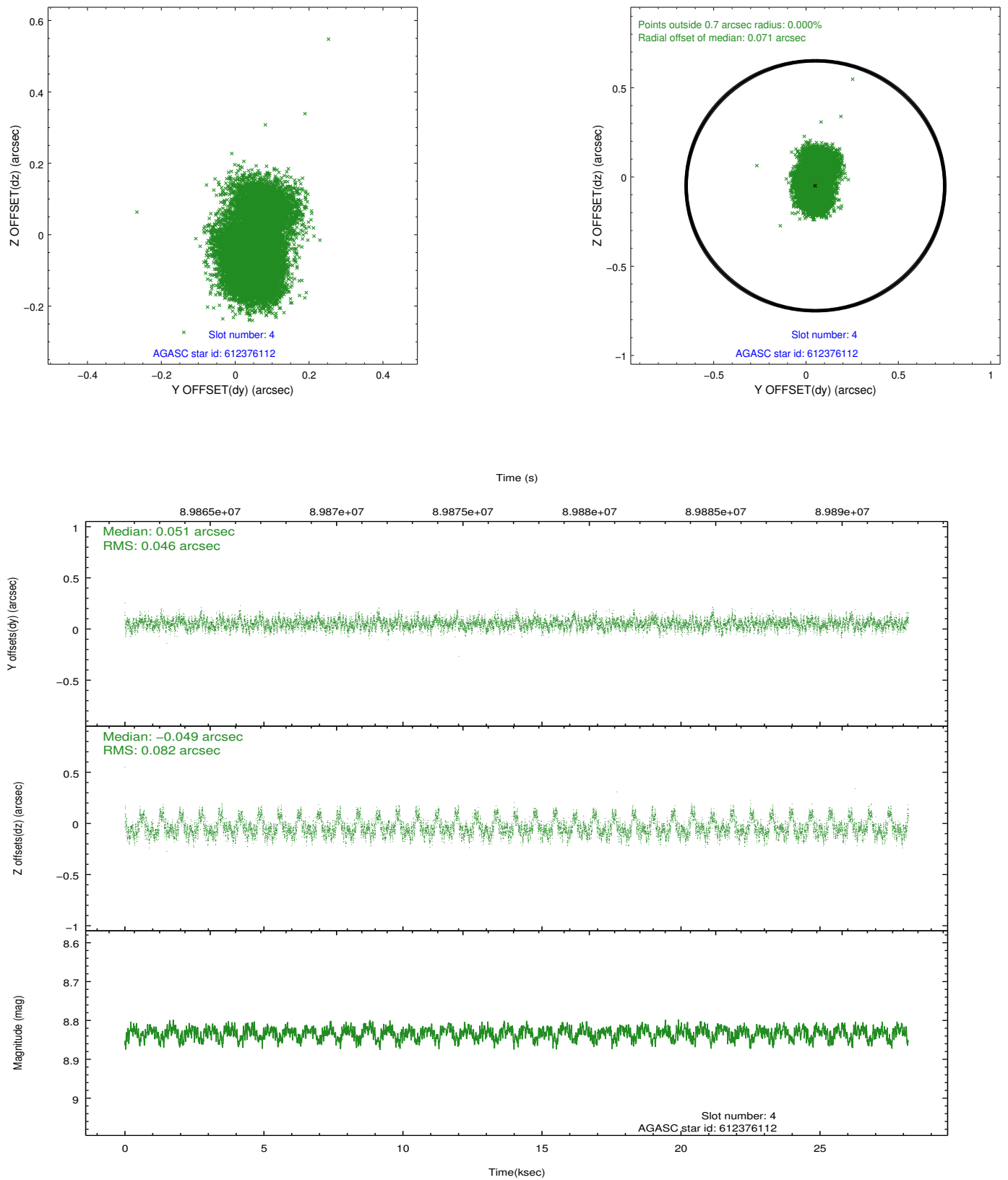
slot	status	id	mag	n_pts	med_dy	med_dz	dr1	dr2	ra	dec	mean_y	mean_z
0	FID	ACIS-S-2	7.12	6873	-0.043	-0.014	0.006	0.010	0.000000	0.000000	-754.93	-1726.06
1	FID	ACIS-S-4	7.21	6873	0.003	0.024	0.005	0.009	0.000000	0.000000	2158.32	182.42
2	FID	ACIS-S-5	7.24	6875	0.009	-0.001	0.006	0.010	0.000000	0.000000	-1807.64	176.11
3	GUIDE	612374032	8.21	13745	-0.064	0.039	0.058	0.092	8.955142	-0.898357	-1301.80	-466.40
4	GUIDE	612376112	8.83	13744	0.051	-0.049	0.098	0.171	8.733318	-1.310240	-410.17	-1895.21
5	GUIDE	612370560	9.35	13743	0.004	-0.073	0.080	0.129	8.872997	-1.086508	-860.24	-1059.35
6	GUIDE	612374608	9.49	13742	0.075	0.045	0.088	0.140	9.290153	-0.866218	-803.98	637.98
7	GUIDE	612374896	9.56	13745	-0.068	0.026	0.079	0.130	9.101748	-0.582076	-2028.75	556.68

## 2.4 Star Slots

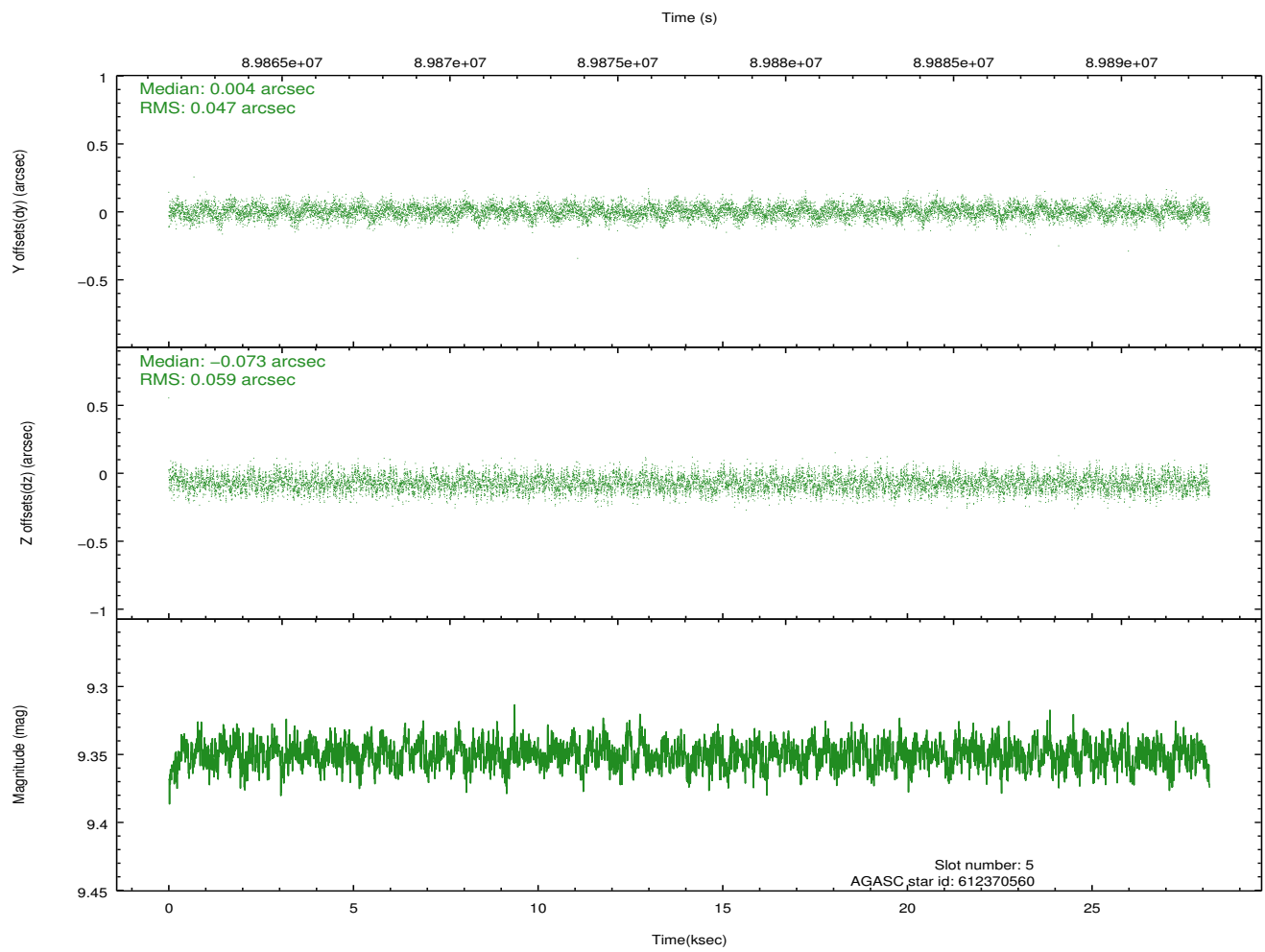
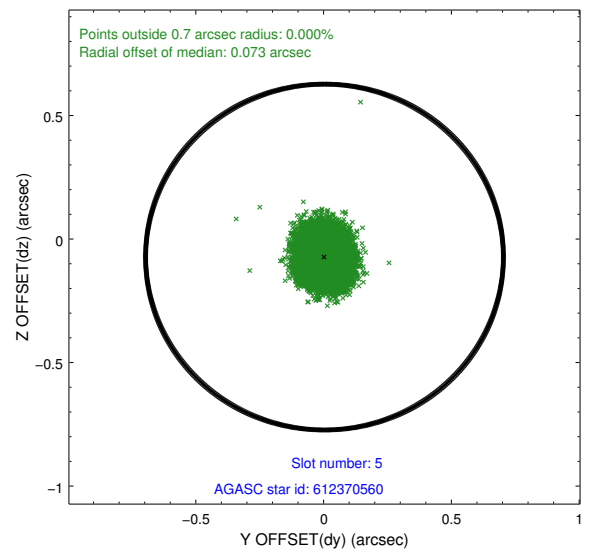
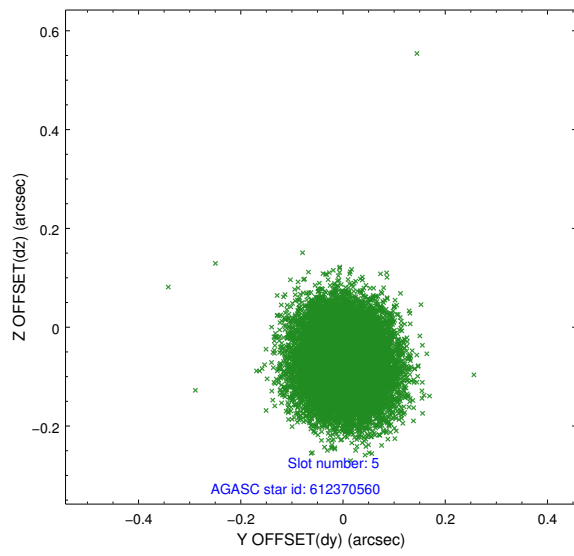
### 2.4.1 Slot 3



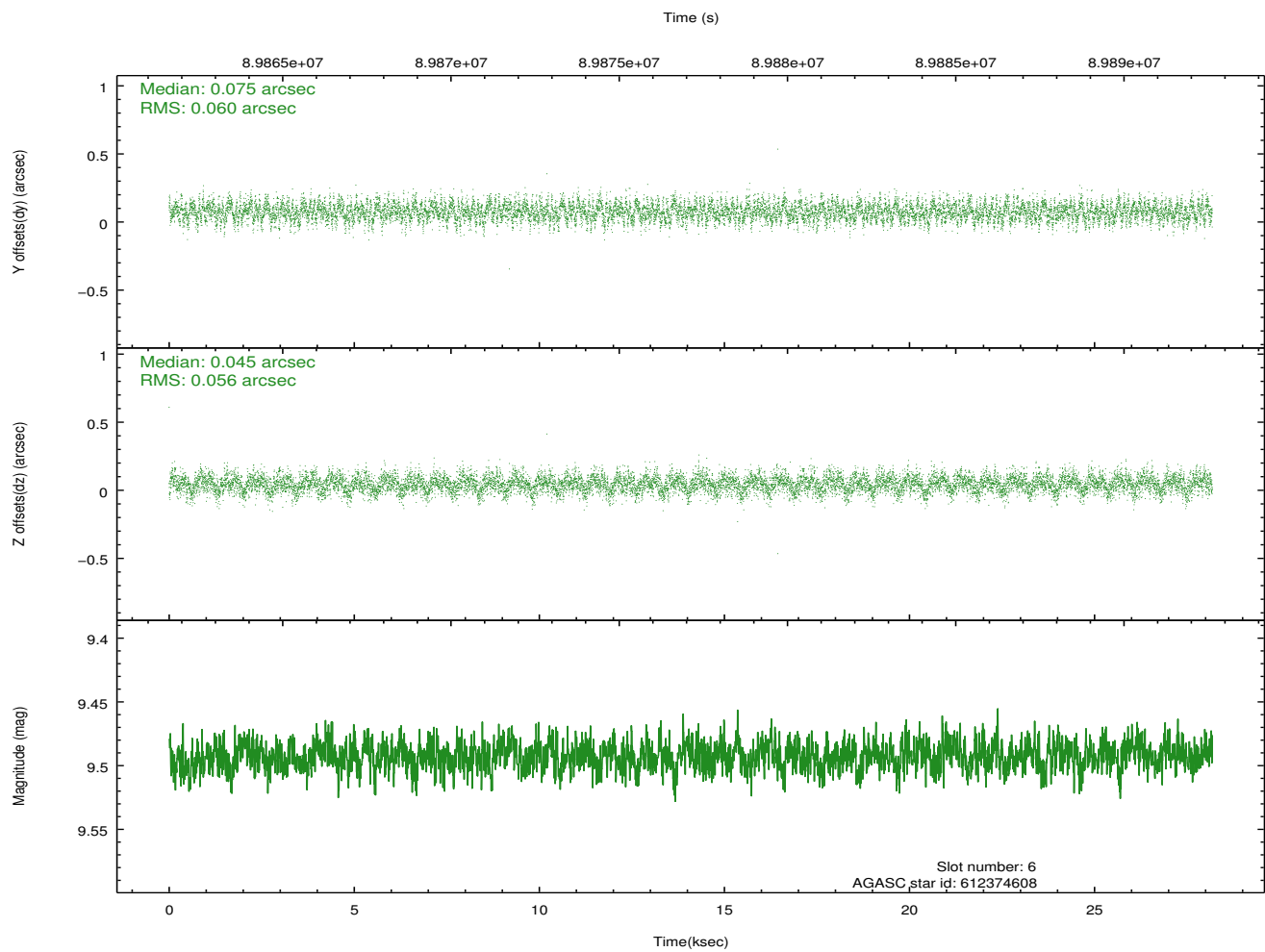
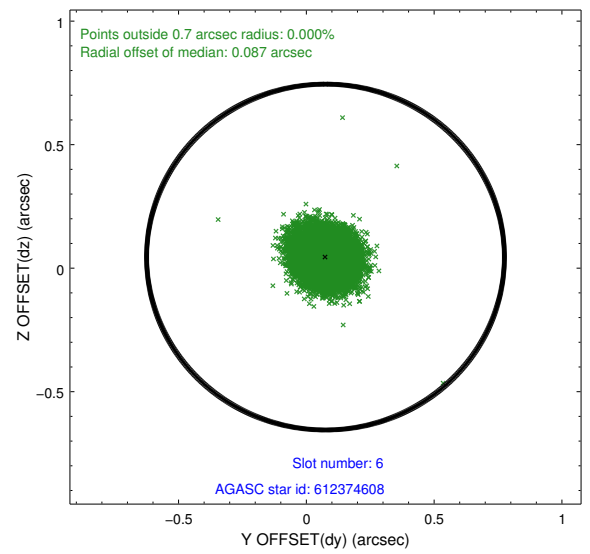
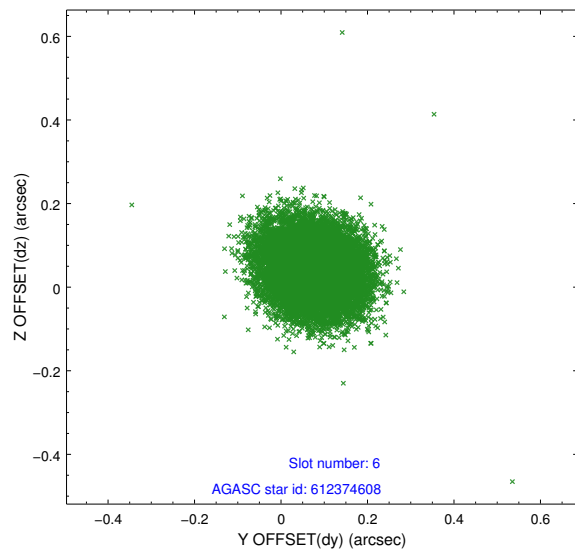
## 2.4.2 Slot 4



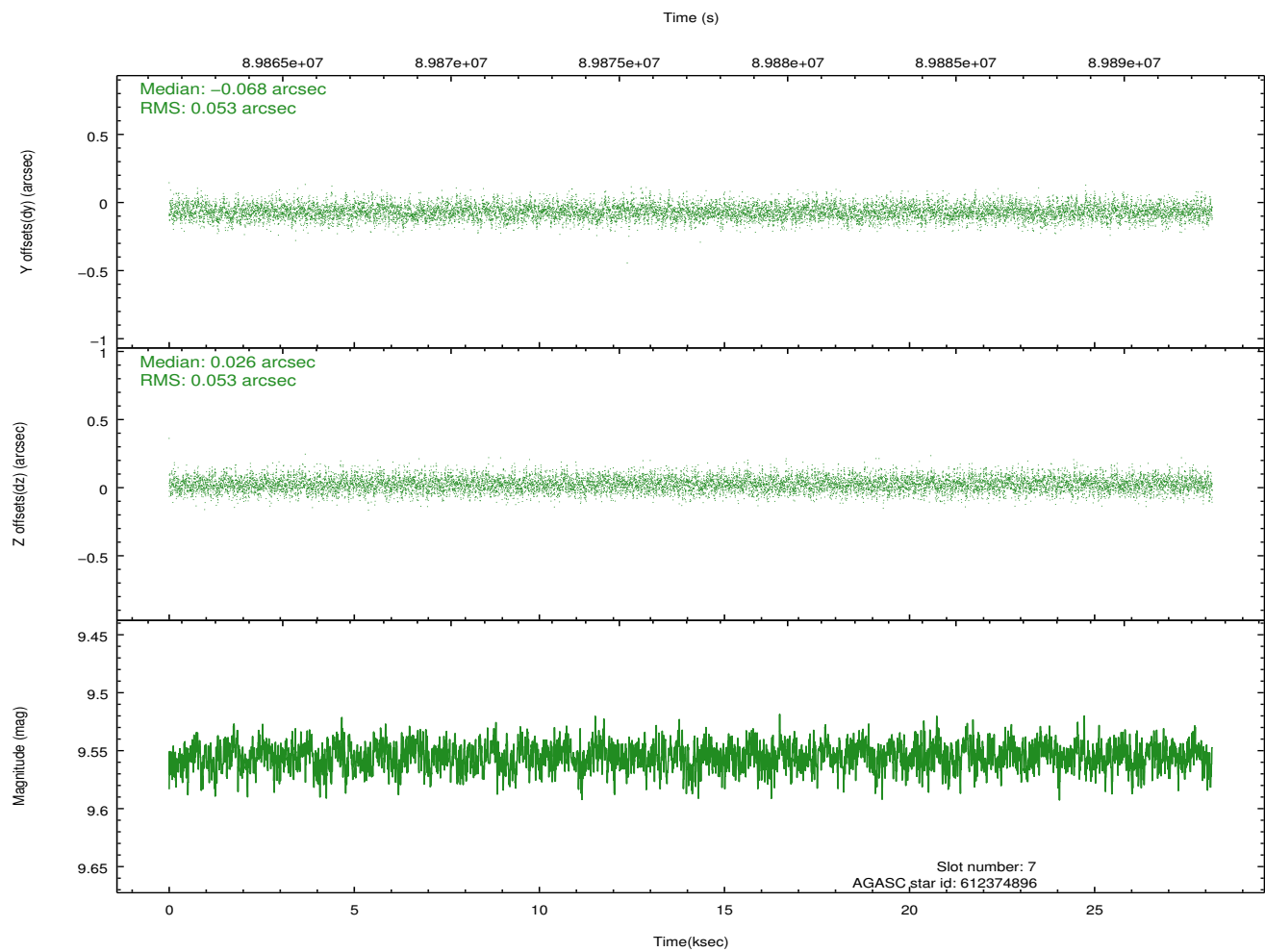
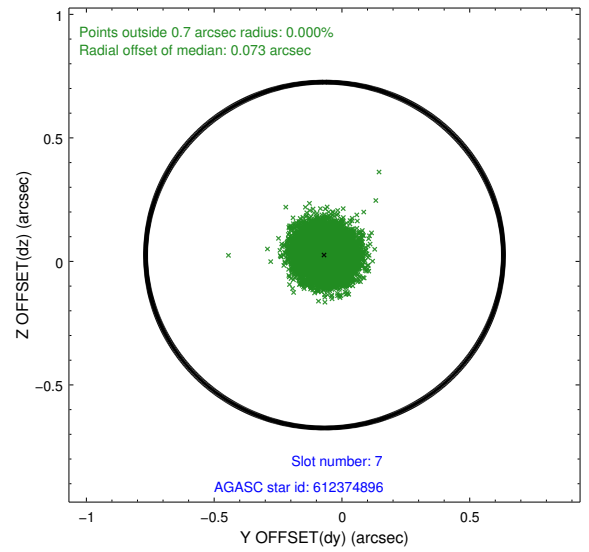
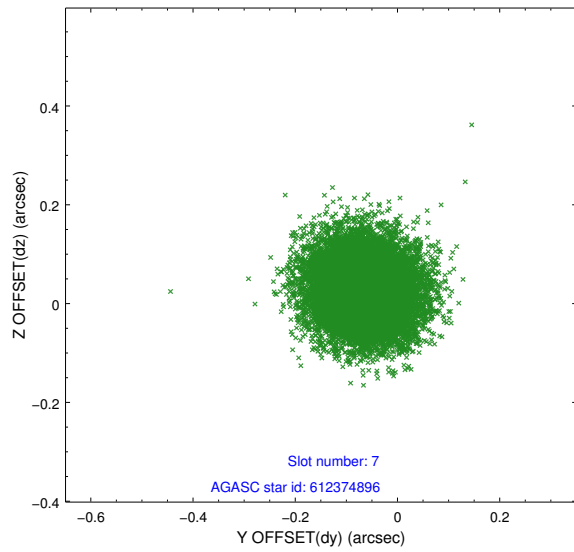
### 2.4.3 Slot 5



## 2.4.4 Slot 6

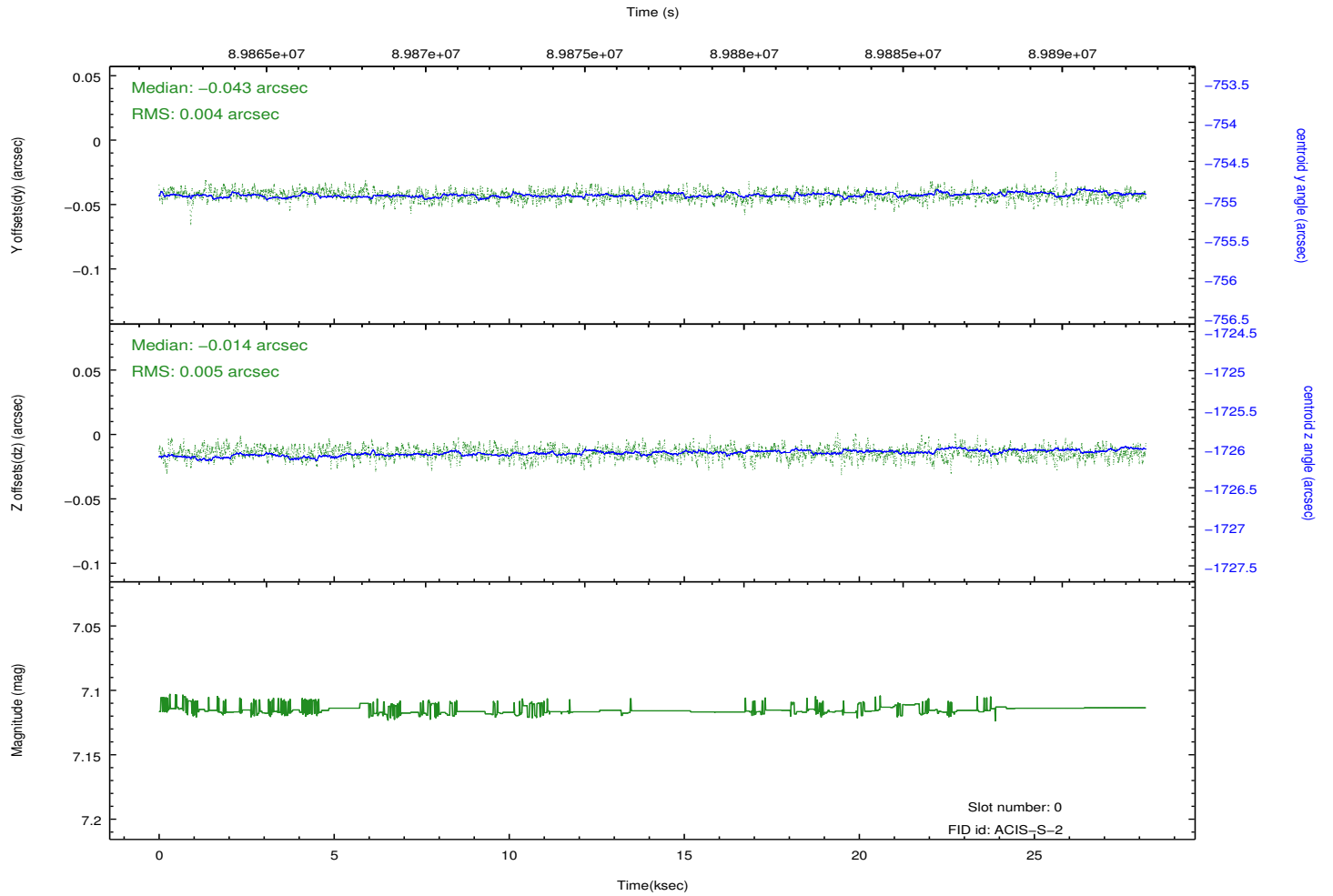
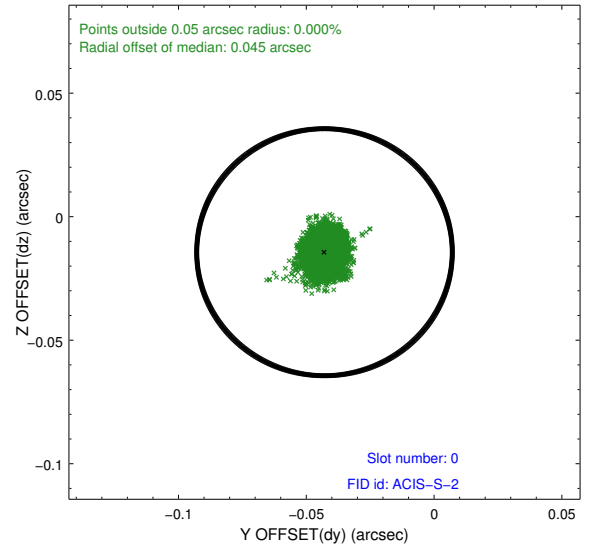
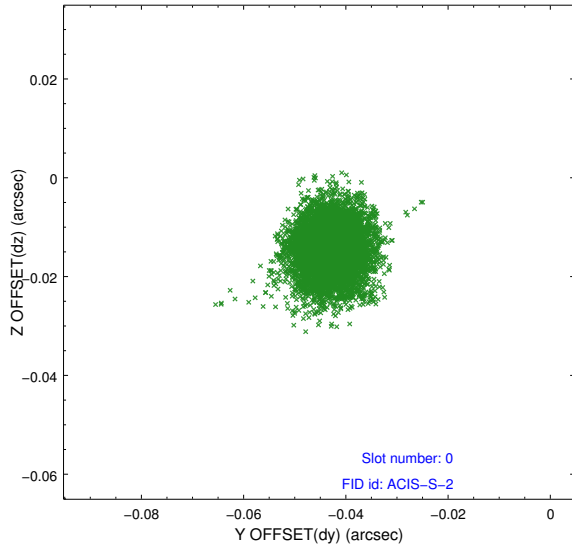


## 2.4.5 Slot 7

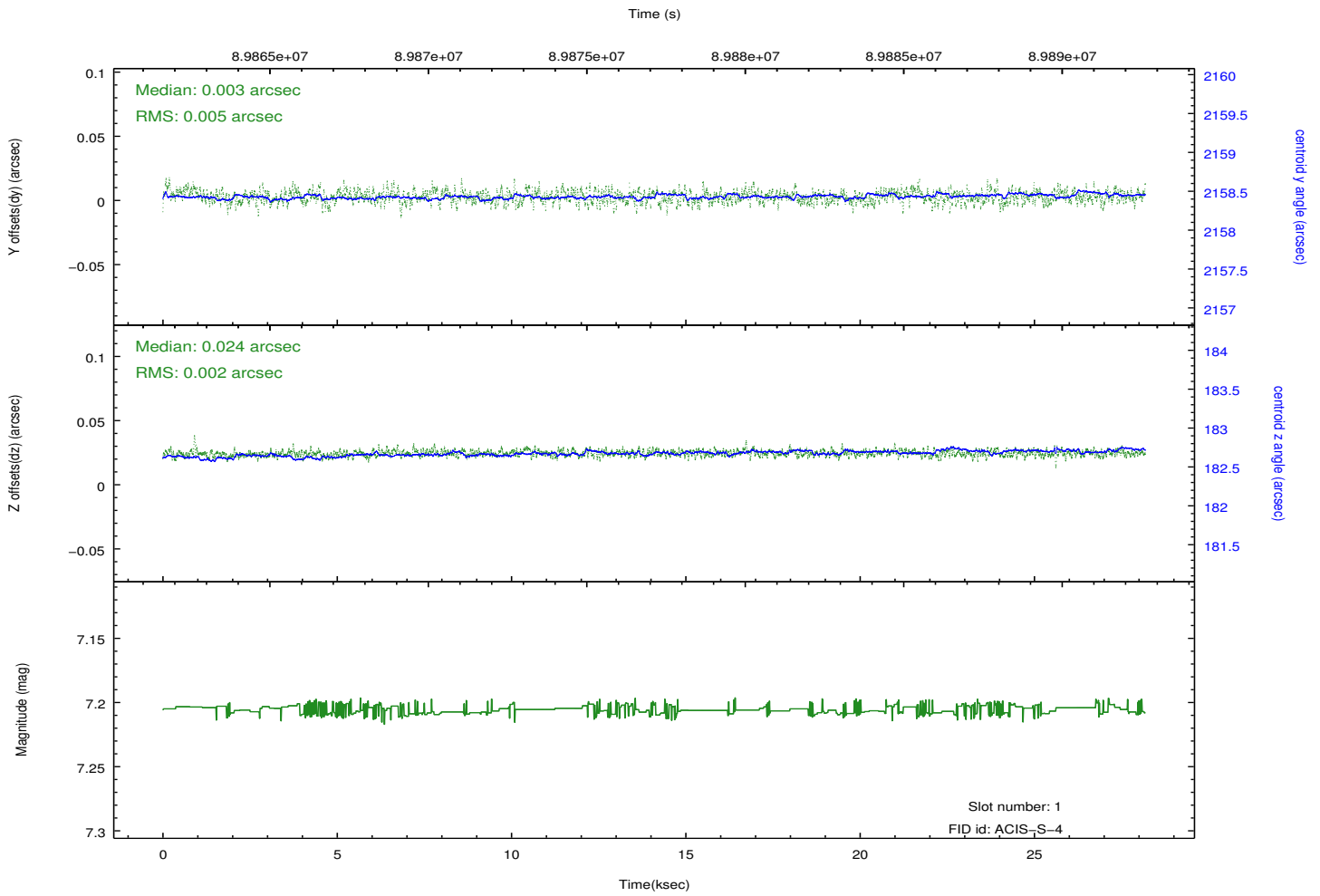
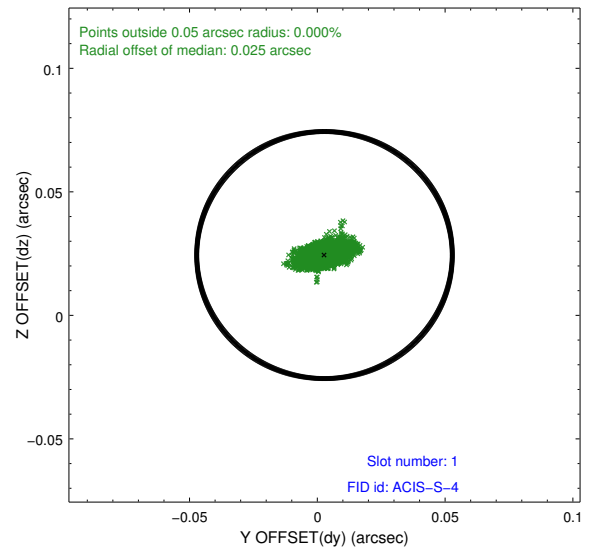
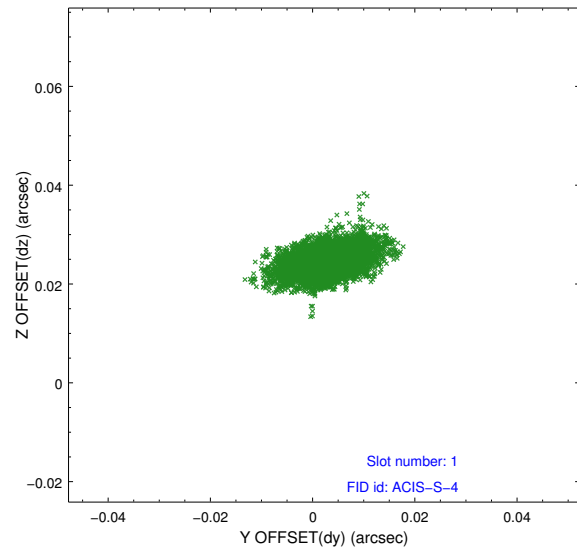


## 2.5 FID Slots

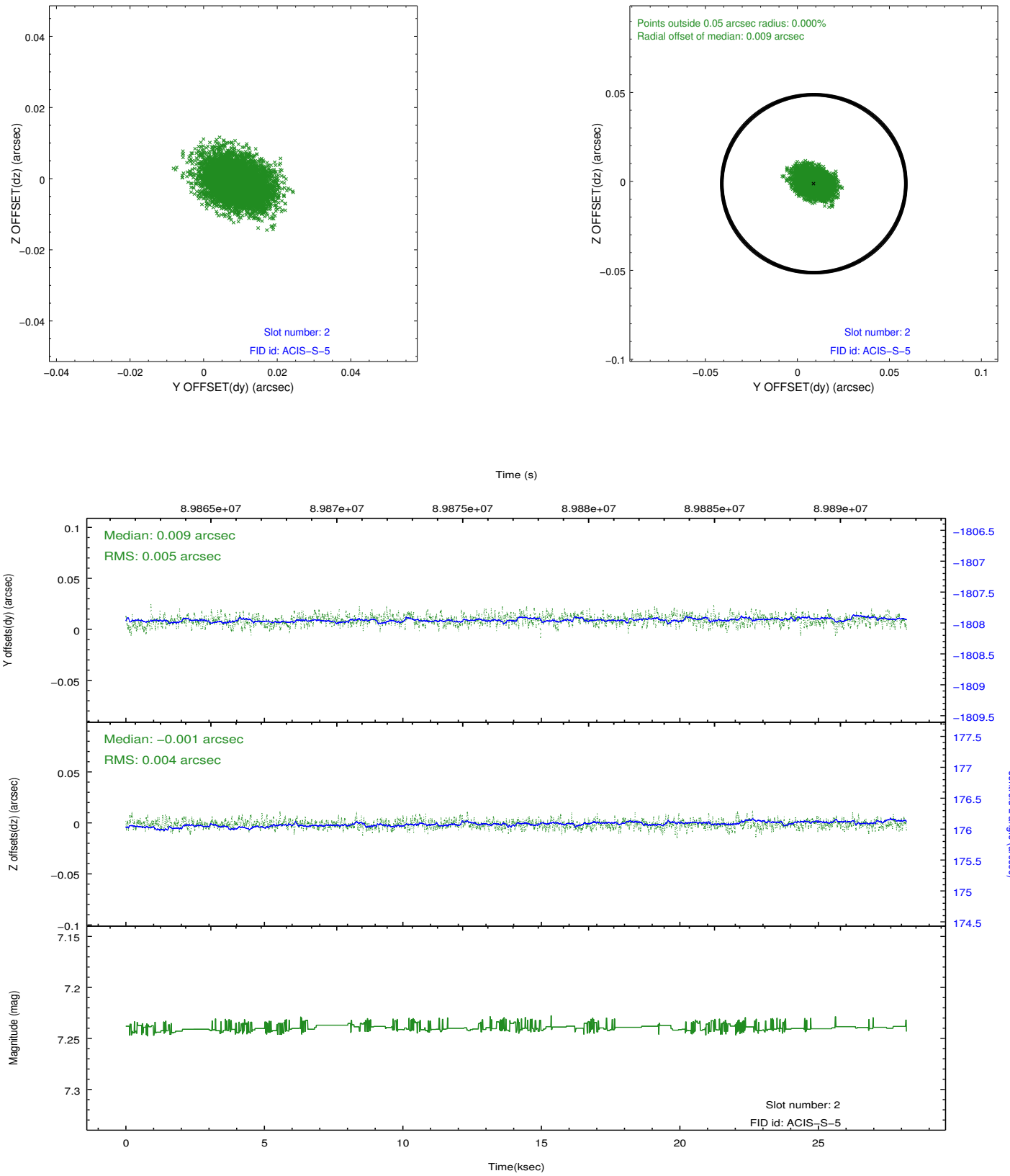
### 2.5.1 Slot 0



## 2.5.2 Slot 1



### 2.5.3 Slot 2



# A Summary

## A.1 Status

V&V Scientist	Beth Sundheim
V&V Date (YYYY-MM-DD)	2012.09.10
V&V Edition	1
V&V Disposition and Status	OK
V&V Charge Time	28.179

## A.2 Comments