

V&V Reference Report

L2 ASCDS Version : 8.4.5

Observation 2238 - L2 Version 3
Chandra X-Ray Center

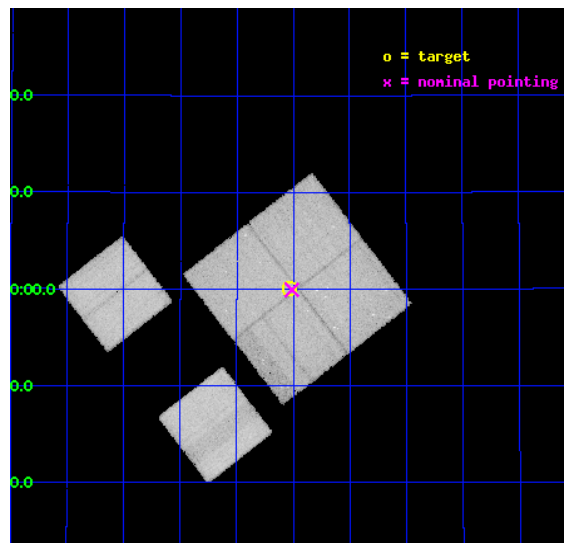
L2 Processing Date : Sep 17 2012

Contents

1	Front	2
2	OBI	3
2.1	OBI	3
2.1.1	Images	3
2.1.2	Bias	3
2.1.3	Parameters	4
2.1.4	Events	4
2.2	Compared Parameters	5
2.3	Aspect	6
2.4	Star Slots	9
2.4.1	Slot 3	9
2.4.2	Slot 4	10
2.4.3	Slot 5	11
2.4.4	Slot 6	12
2.4.5	Slot 7	13
2.5	FID Slots	14
2.5.1	Slot 0	14
2.5.2	Slot 1	15
2.5.3	Slot 2	16
A	Summary	17
A.1	Status	17
A.2	Comments	17

1 Front

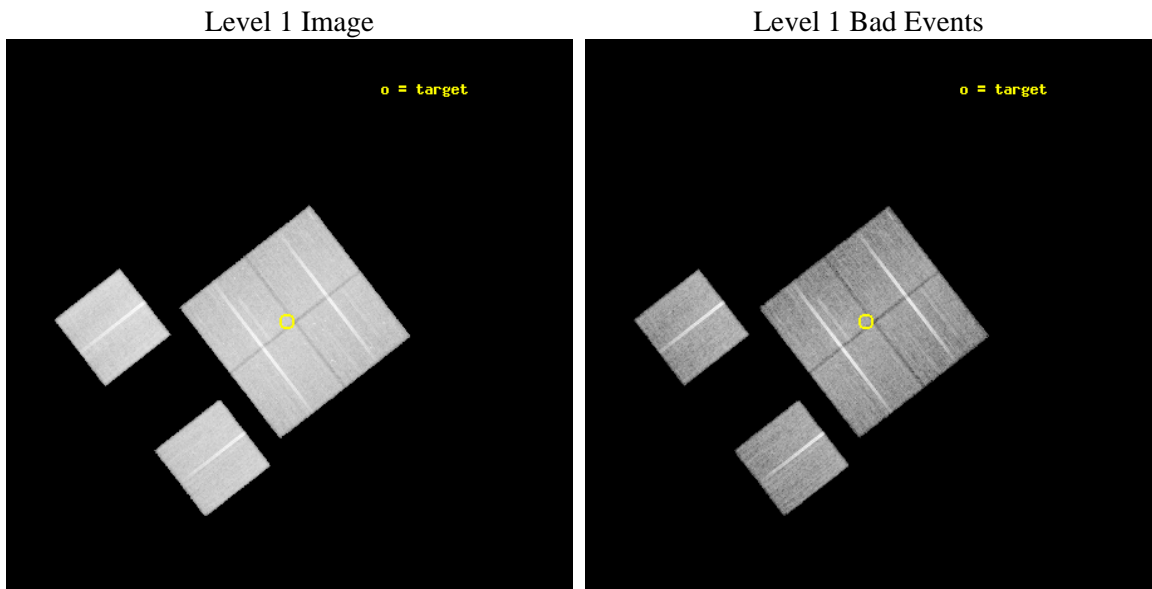
seq_num	900065	Sequence number
obs_id	2238	Observation id
title	A COMBINED CHANDRA/XMM ATTACK ON THE ASTROPHYSICS OF THE HARD X-RAY BACKGROUND.	Proposal title
observer	Prof. Ian McHardy	Principal investigator
object	XMM 13HR - FIELD 3	Source name
dtcycle	0	
cycle	P	events from which exps? Prim/Second/Both
ra_targ	203.758249	Observer's specified target RA [deg]
dec_targ	38.001255	Observer's specified target Dec [deg]
ra_nom	203.7530034322	Nominal RA [deg]
dec_nom	37.998936847973	Nominal Dec [deg]
roll_nom	232.20191857002	Nominal Roll [deg]
revision	3	Processing version of data
ontime	28515.13672322	Sum of GTIs [s]
livetime	28154.060892277	Livetime [s]
ontime0	28566.992057681	Sum of GTIs [s]
ontime1	28635.053079844	Sum of GTIs [s]
ontime2	28453.558358535	Sum of GTIs [s]
ontime3	28515.13672322	Sum of GTIs [s]
ontime6	28803.582853898	Sum of GTIs [s]
ontime8	28758.209270433	Sum of GTIs [s]
l2events	320722	Number of level 2 events



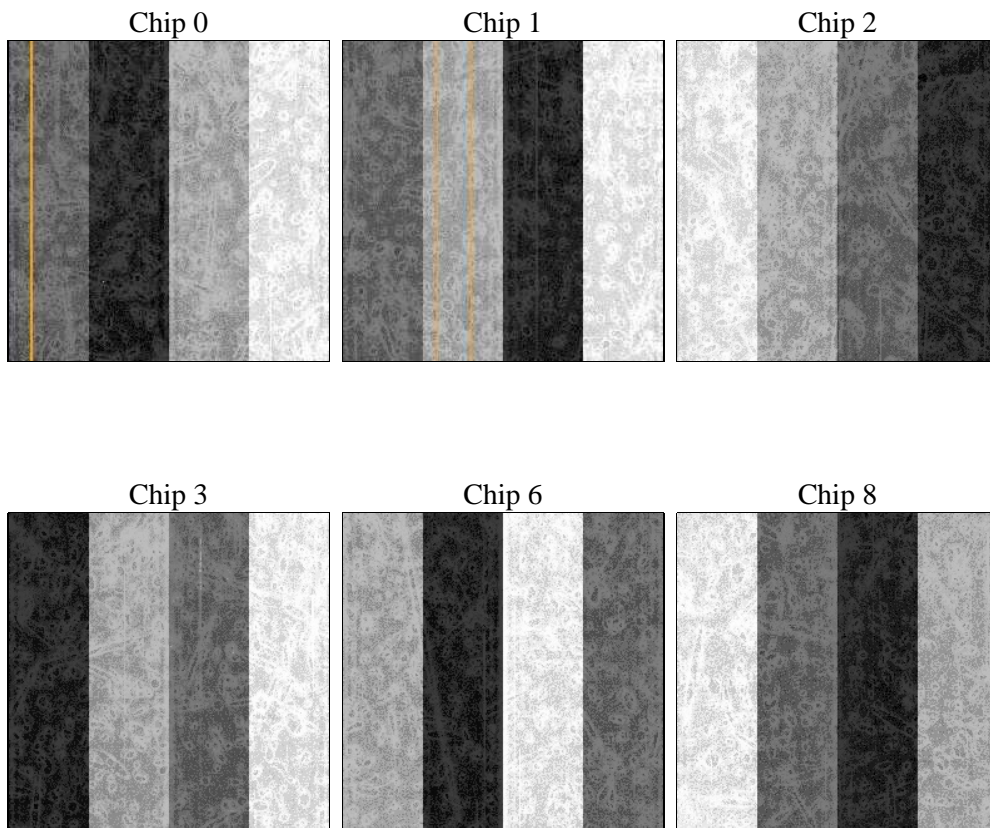
2 OBI

2.1 OBI

2.1.1 Images



2.1.2 Bias



2.1.3 Parameters

obi_num	1	Obi number	sched_exp_time	29780.021000	[s] Scheduled observation exposure time
ascdsver	8.4.5	Processing system revision	ontime	28515.13672322	Sum of GTIs [s]
caldbver	4.5.1.1	 	ontime0	28566.992057681	Sum of GTIs [s]
date	2012-09-17T19:53:33	Date and time of file creation	ontime1	28635.053079844	Sum of GTIs [s]
revision	3	Processing version of data	ontime2	28453.558358535	Sum of GTIs [s]
			ontime3	28515.13672322	Sum of GTIs [s]
			ontime6	28803.582853898	Sum of GTIs [s]
			ontime8	28758.209270433	Sum of GTIs [s]
			l1events	1362254	Number of level 1 events

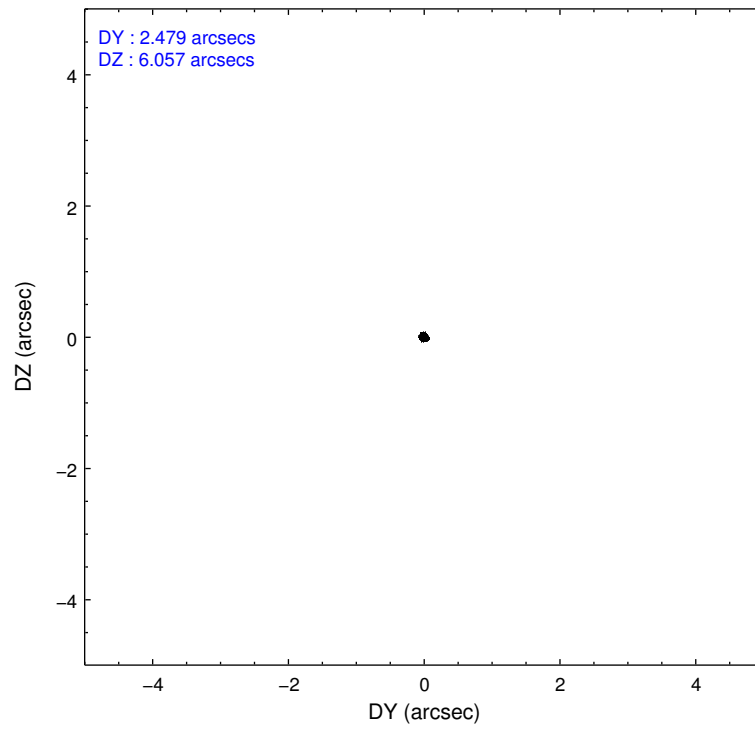
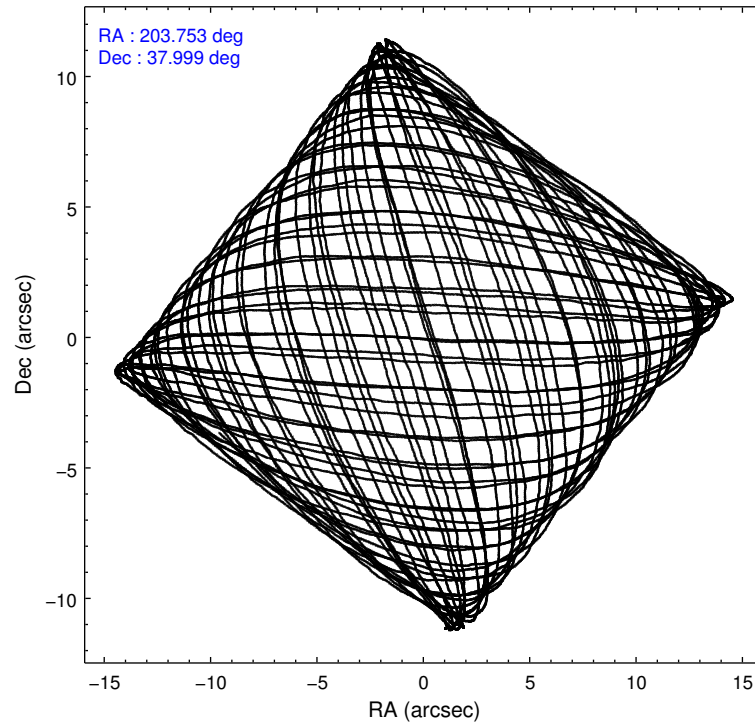
2.1.4 Events

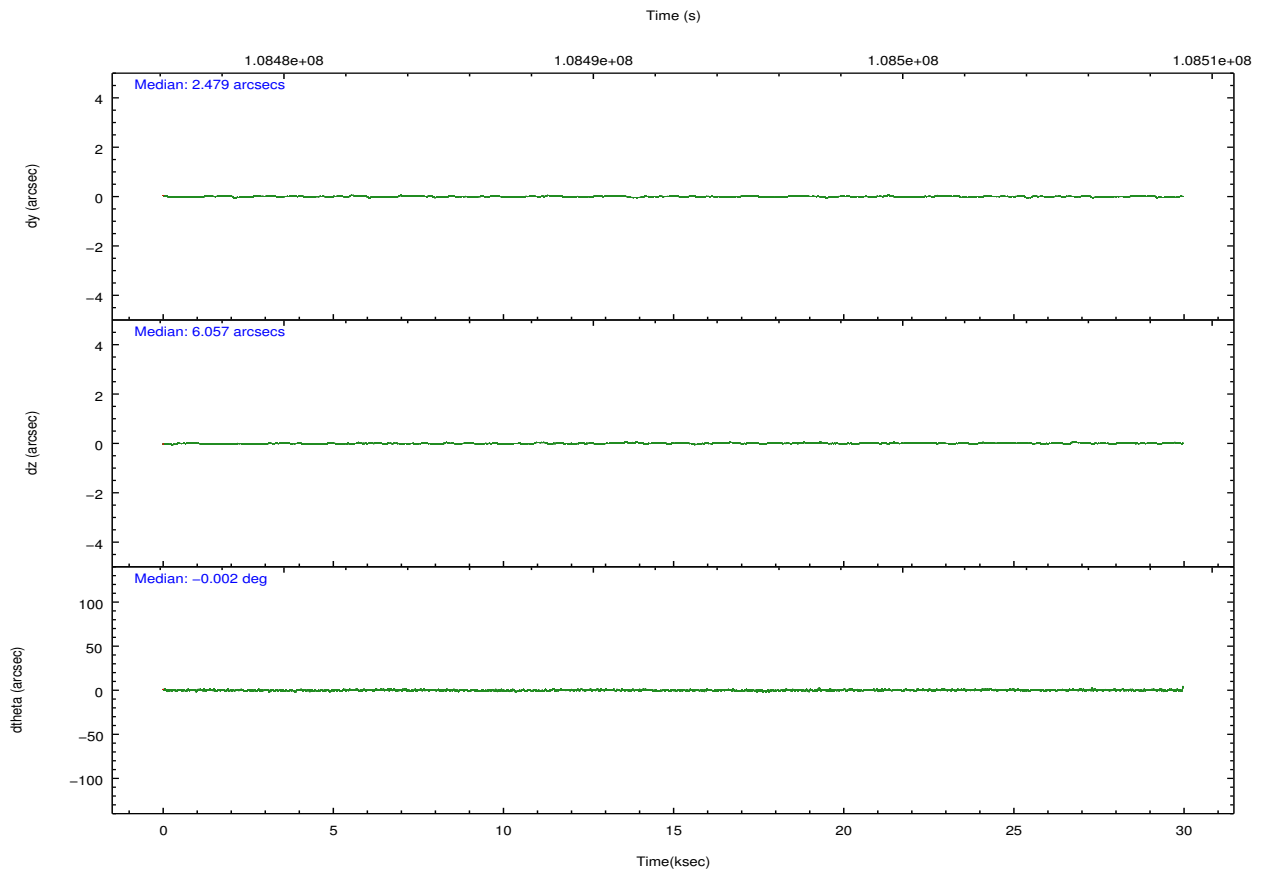
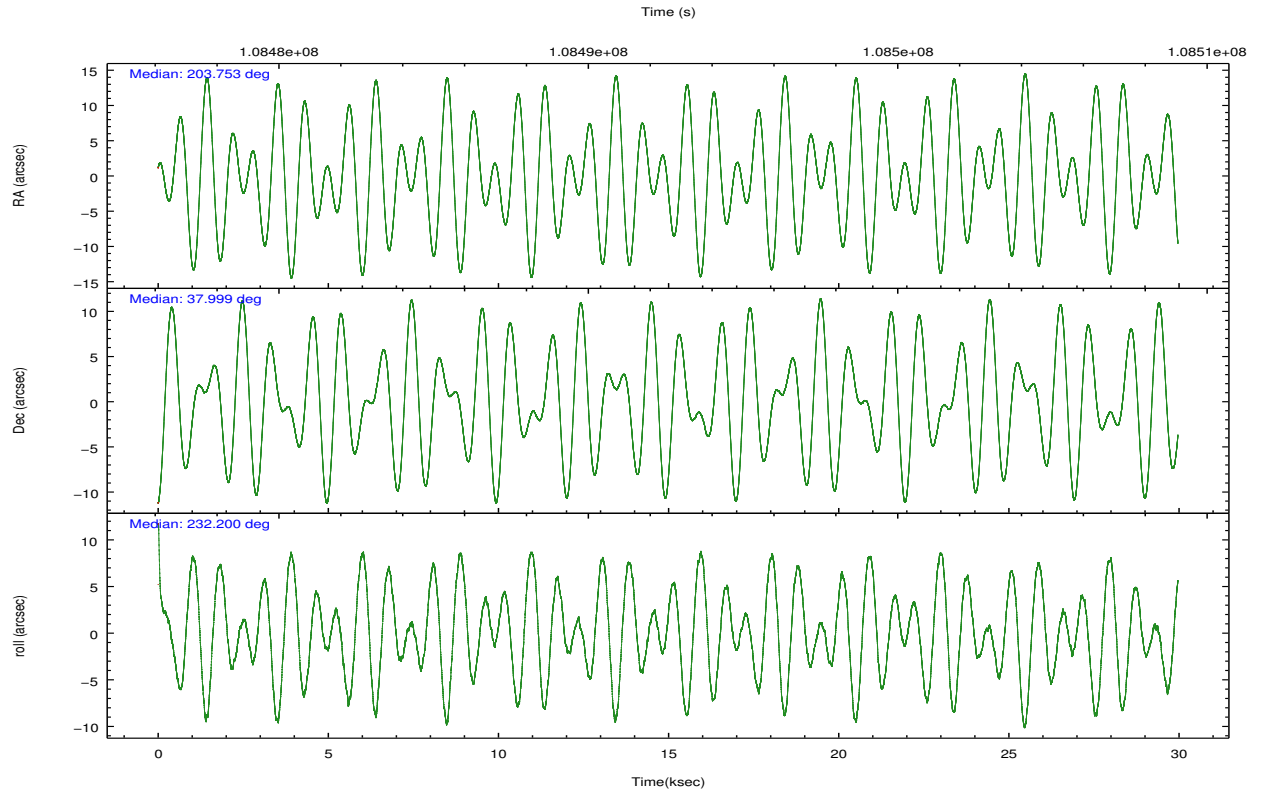
	ccd 0	ccd 1	ccd 2	ccd 3	ccd 6	ccd 8		ccd 0	ccd 1	ccd 2	ccd 3	ccd 6	ccd 8
level 1 events	203083	203244	215736	217035	235569	287587	grade 0 events	34449	34284	30507	33621	46775	49072
rejected events	147916	146939	165628	163163	166175	195844		16%	16%	14%	15%	19%	17%
rejected %	72%	72%	76%	75%	70%	68%	grade 1 events	200	190	187	184	233	281
								0%	0%	0%	0%	0%	0%
							grade 2 events	8773	8802	8345	8432	9607	15443
								4%	4%	3%	3%	4%	5%
							grade 3 events	3141	3436	2907	3065	3237	6376
								1%	1%	1%	1%	1%	2%
							grade 4 events	2973	3406	2886	3084	3159	6148
								1%	1%	1%	1%	1%	2%
							grade 5 events	6502	7094	6268	7029	7761	10248
								3%	3%	2%	3%	3%	3%
							grade 6 events	5881	6477	5517	5721	6721	14767
								2%	3%	2%	2%	2%	5%
							grade 7 events	141164	139555	159119	155899	158076	185252
								69%	68%	73%	71%	67%	64%

2.2 Compared Parameters

Parameter	Planned	Actual	Parameter	Planned	Actual
Instrument	ACIS	ACIS	Obspar format version number	7	7
Detector	ACIS-012368	ACIS-012368	Obspar file type	PREDICTED	ACTUAL
Grating	NONE	NONE	Obspar update status	NONE	UPDATED
Data mode	VFAINT	VFAINT	Number of optional ACIS chips dropped	0	0
Observation mode	POINTING	POINTING	On-chip summing requested	N	N
[deg] Pointing RA	203.757692	203.7530034321966	Subarray requested	NONE	NONE
[deg] Pointing Dec	38.026138	37.99893684797333	Alternating exposures requested	N	N
[deg] Pointing Roll	231.990339	232.2019185700209	[s] Primary exposure time	0.000000	3.2
[mm] SIM focus pos	-0.782348	-0.7809083437167272			
[mm] SIM defocus	0	0.001439871863259334			
[mm] SIM translation stage pos	-233.592463	-233.5874344608287			
[mm] SIM translation stage offset	0	-0.005018542100998502			
[s] Observation start time (MET)	108477780.184000	108477404.0593			
Observation start date	2001-06-09T12:41:56	2001-06-09T12:36:44			
[s] Observation end time (MET)	108507560.184000	108507874.23549			
Observation end date	2001-06-09T20:58:16	2001-06-09T21:04:34			
Read mode	TIMED	TIMED			

2.3 Aspect



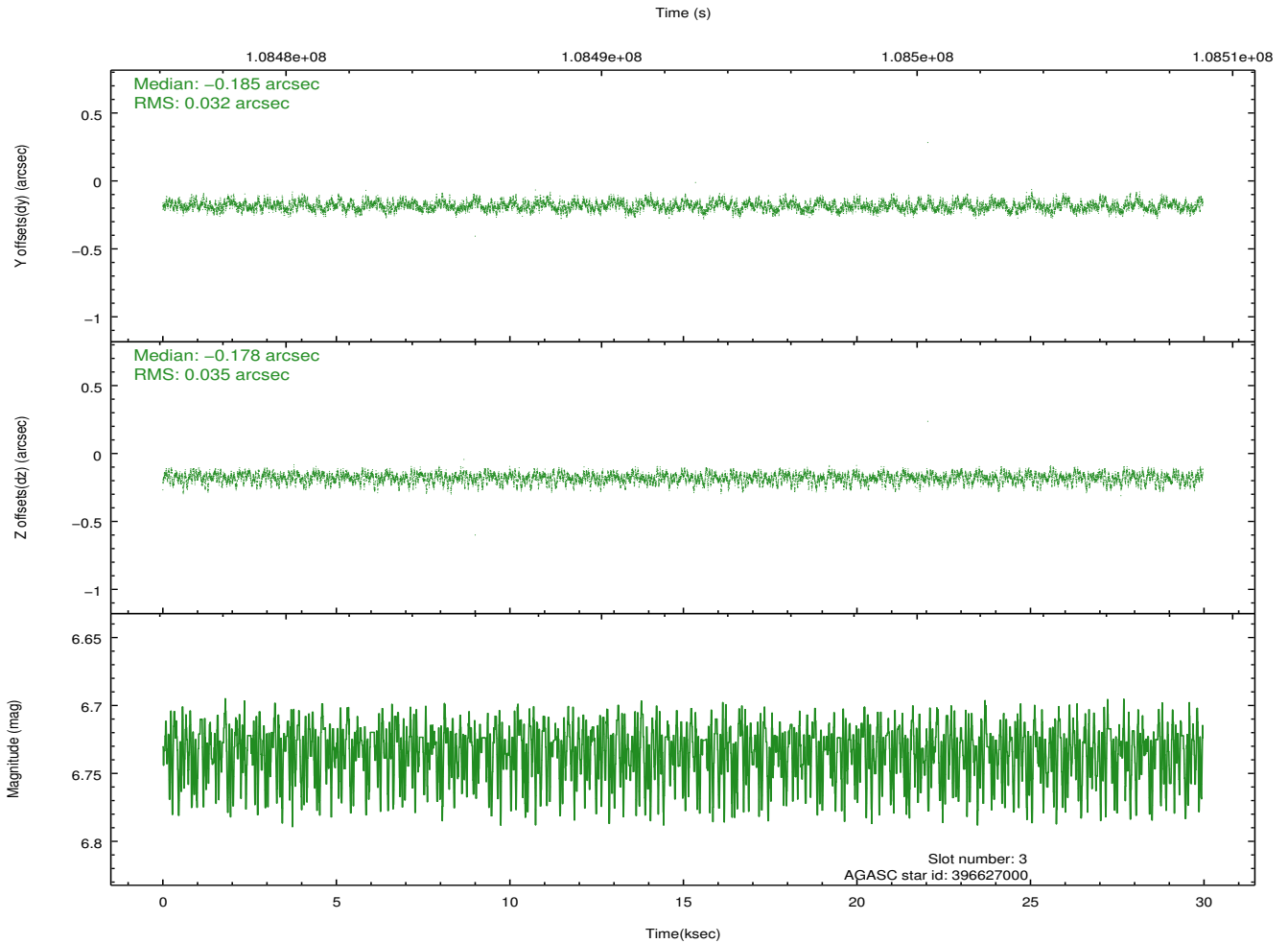
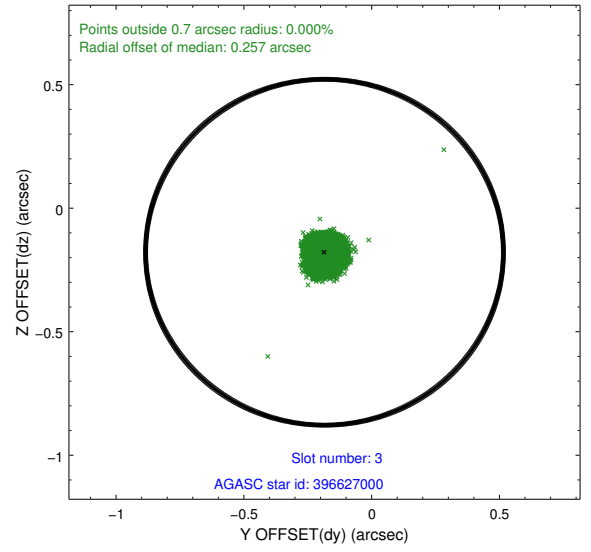
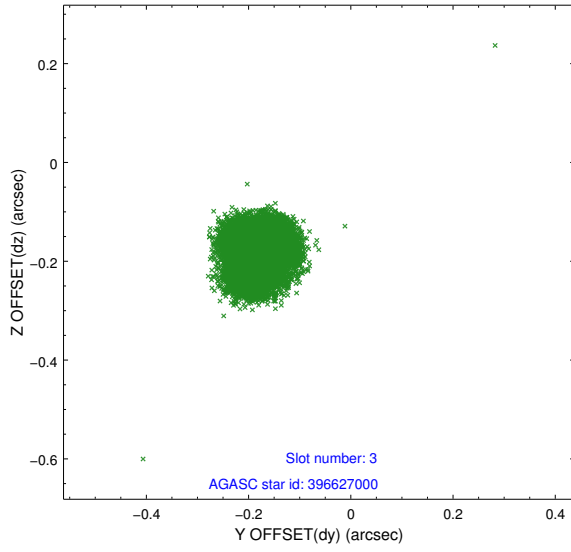


Slot Statistics

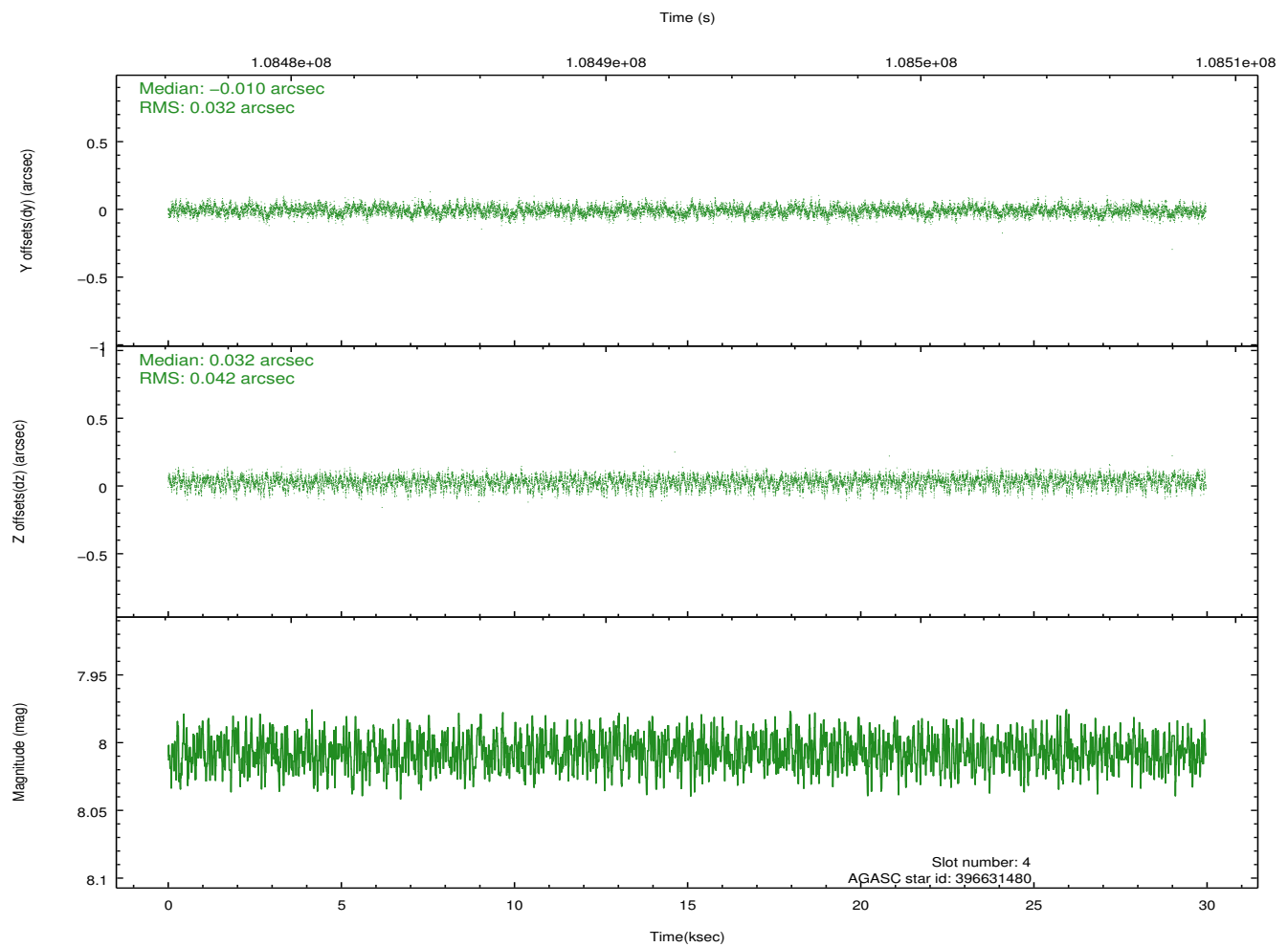
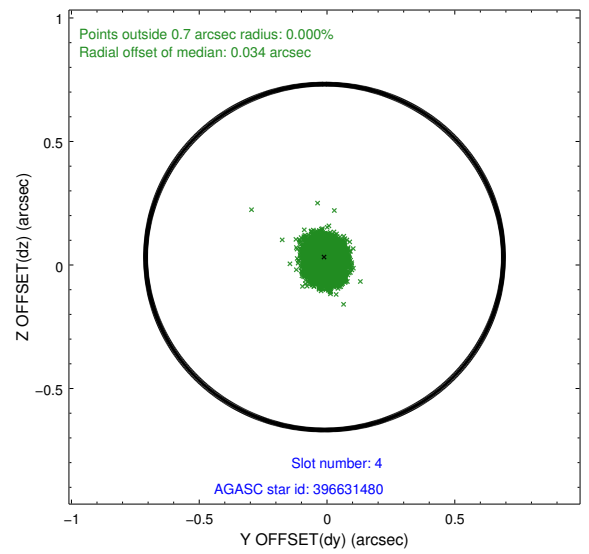
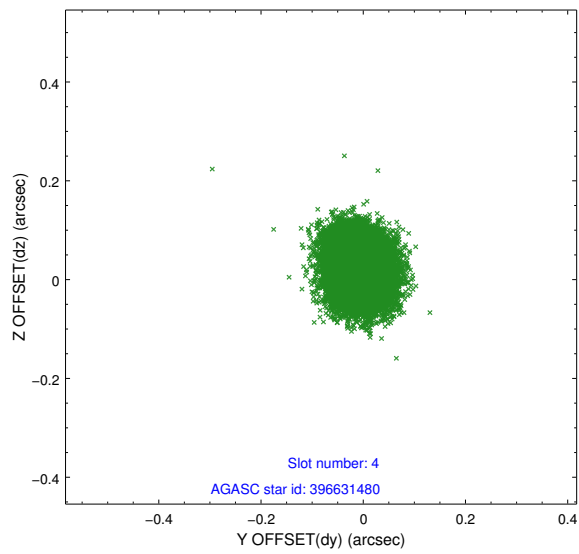
slot	status	id	mag	n_pts	med_dy	med_dz	dr1	dr2	ra	dec	mean_y	mean_z
0	FID	ACIS-I-2	7.15	7307	-0.033	-0.051	0.009	0.017	0.000000	0.000000	-756.87	-835.84
1	FID	ACIS-I-4	7.18	7310	-0.015	0.041	0.006	0.011	0.000000	0.000000	2157.17	1070.40
2	FID	ACIS-I-5	7.23	7309	-0.052	0.079	0.009	0.016	0.000000	0.000000	-1810.63	1068.35
3	GUIDE	396627000	6.73	14619	-0.185	-0.178	0.051	0.081	203.591112	38.789264	-1876.42	-2061.10
4	GUIDE	396631480	8.01	14619	-0.010	0.032	0.056	0.091	203.891262	37.702710	683.62	1015.98
5	GUIDE	333192752	8.44	14618	0.024	0.136	0.052	0.083	203.839277	37.405848	1616.62	1558.63
6	GUIDE	396628240	9.35	14611	0.034	0.075	0.079	0.127	203.780849	38.306087	-833.32	-569.43
7	GUIDE	396631416	9.63	14609	0.136	-0.058	0.087	0.139	203.523145	37.637364	1514.98	334.05

2.4 Star Slots

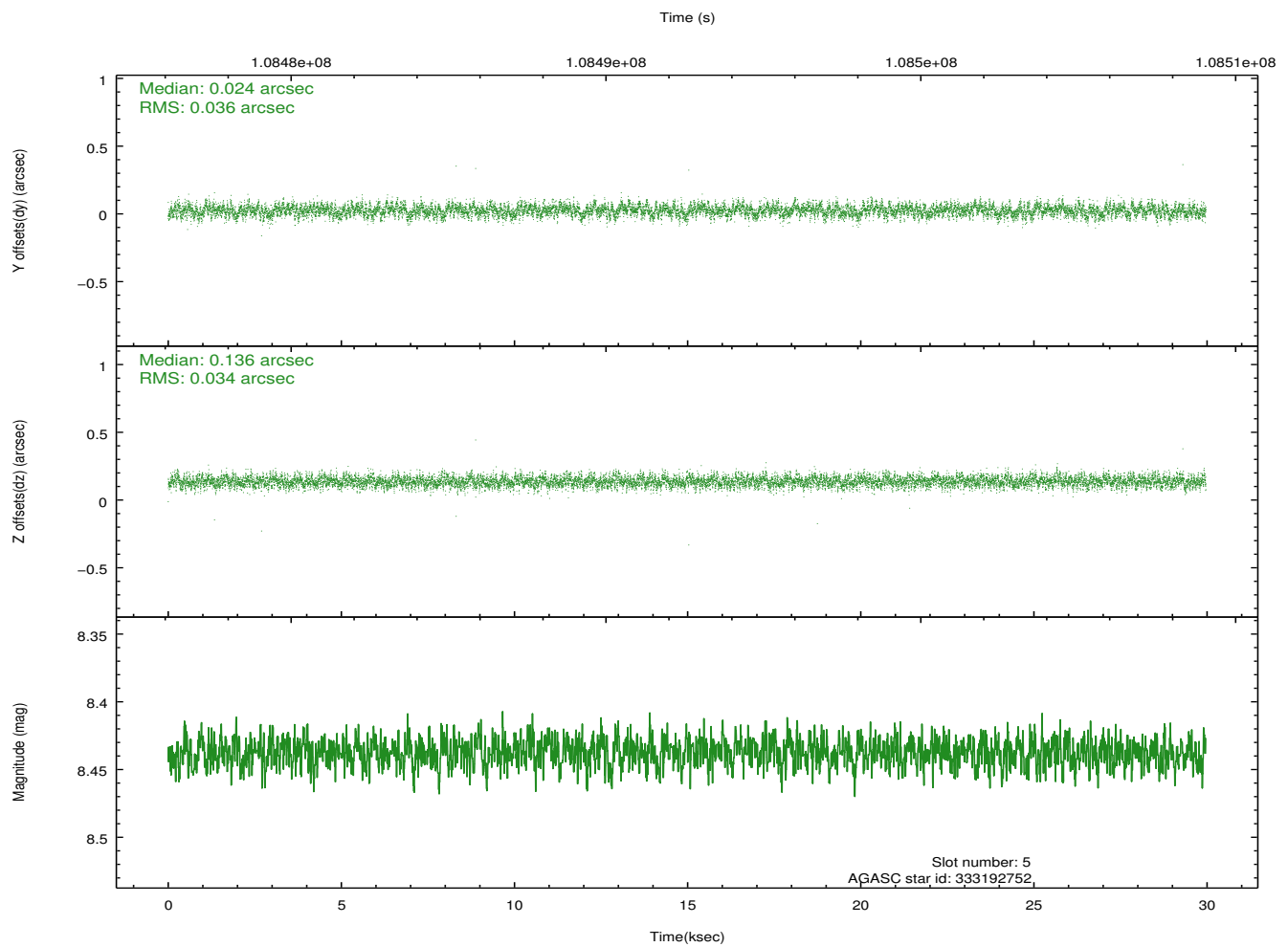
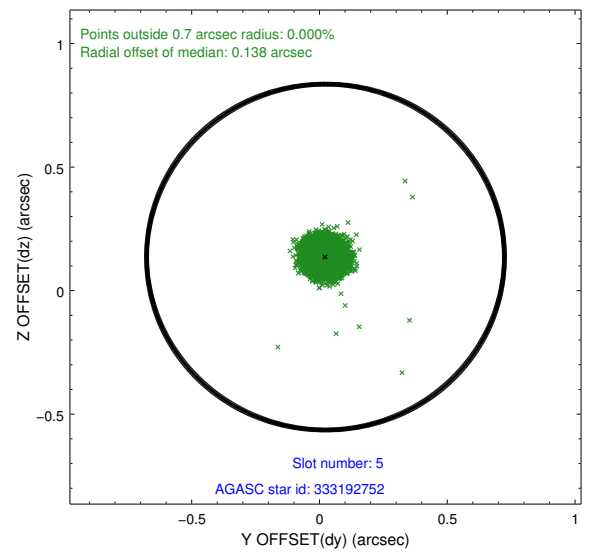
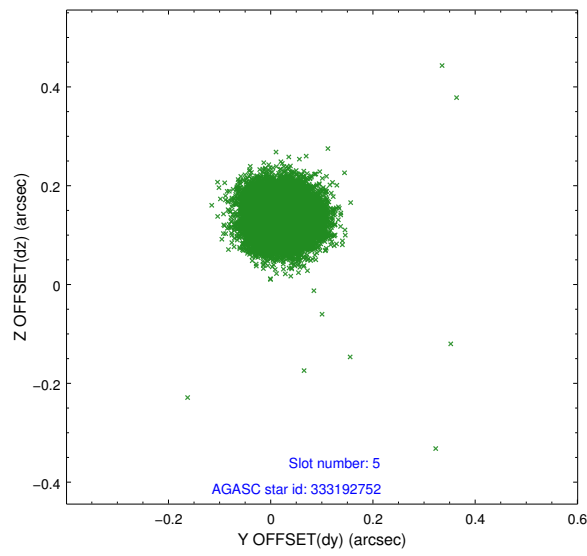
2.4.1 Slot 3



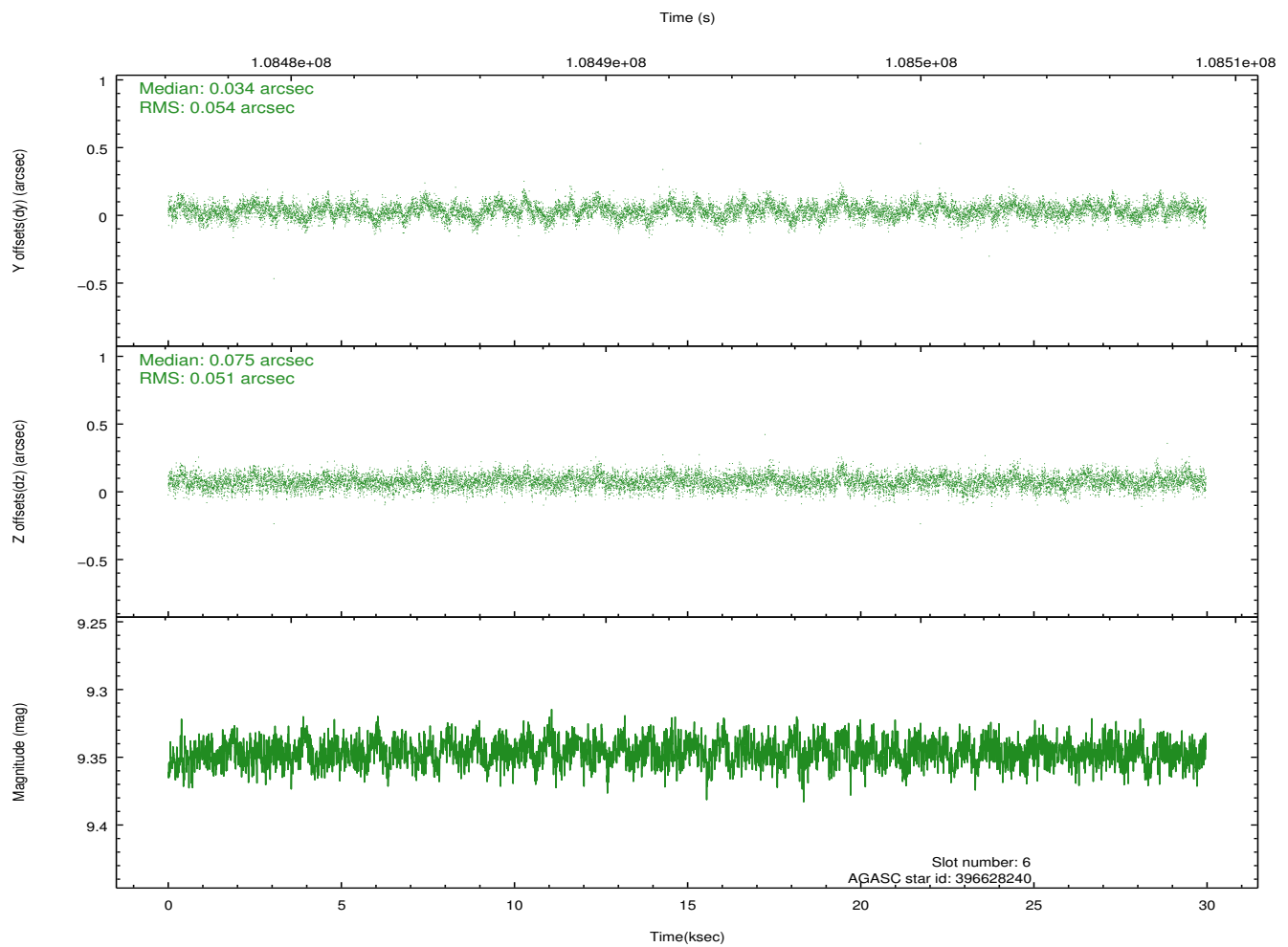
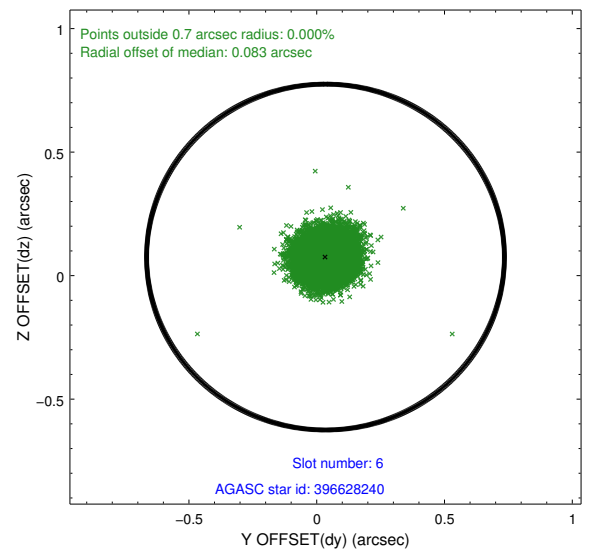
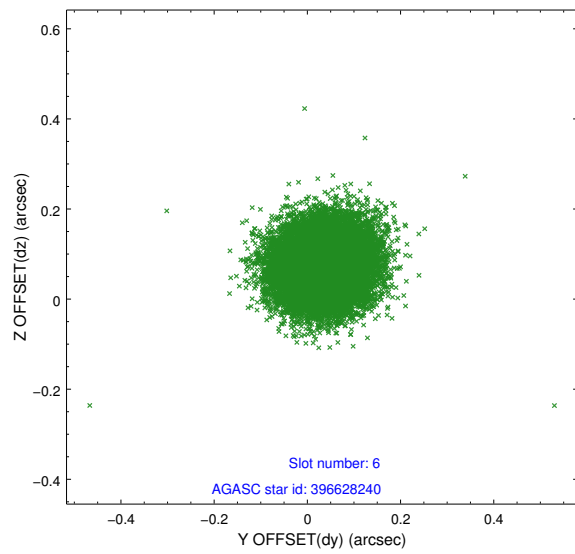
2.4.2 Slot 4



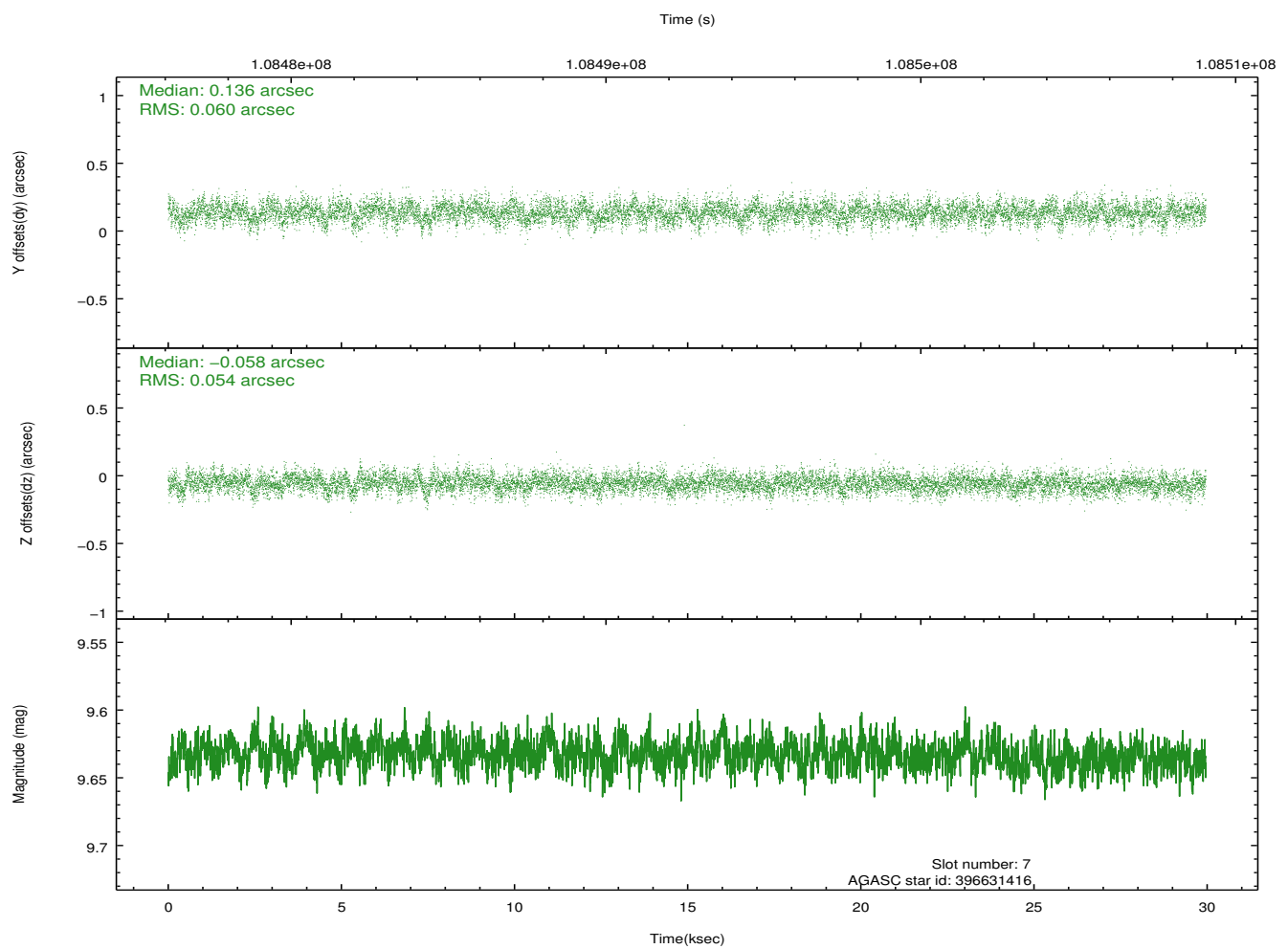
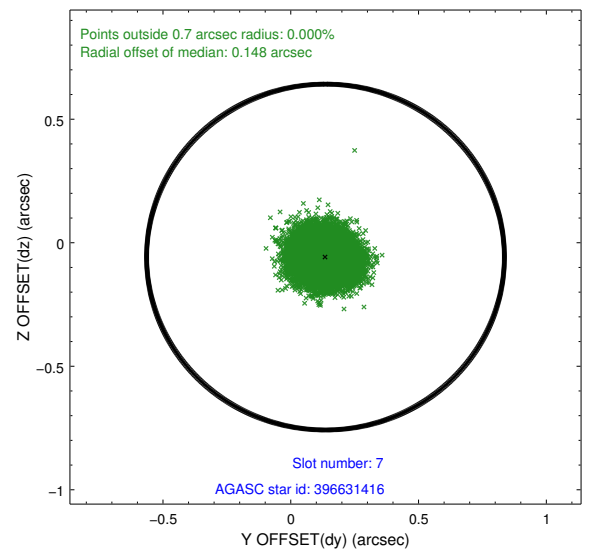
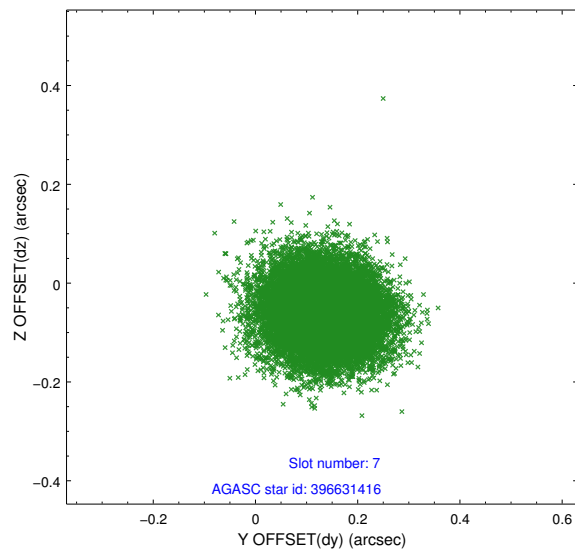
2.4.3 Slot 5



2.4.4 Slot 6

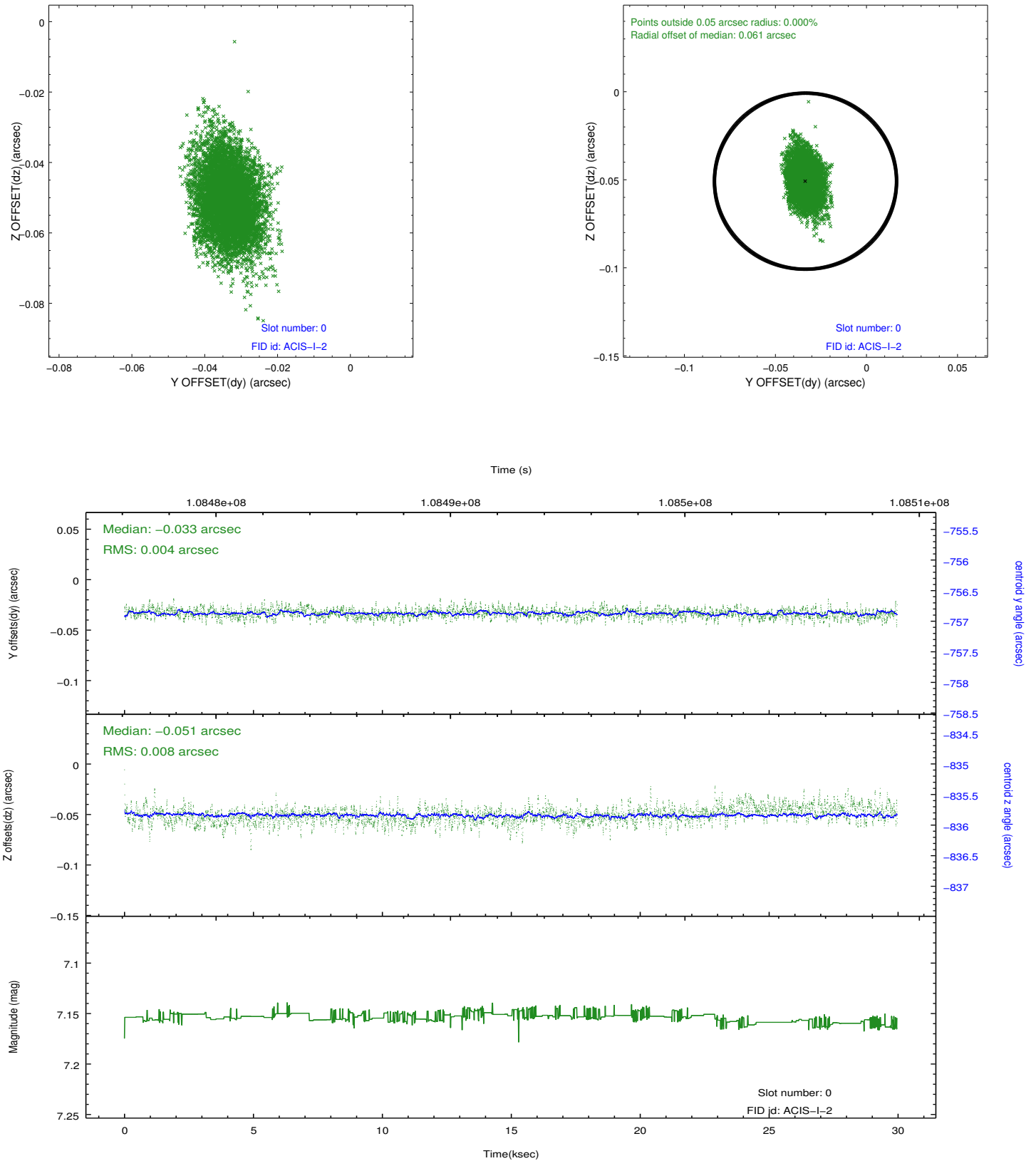


2.4.5 Slot 7

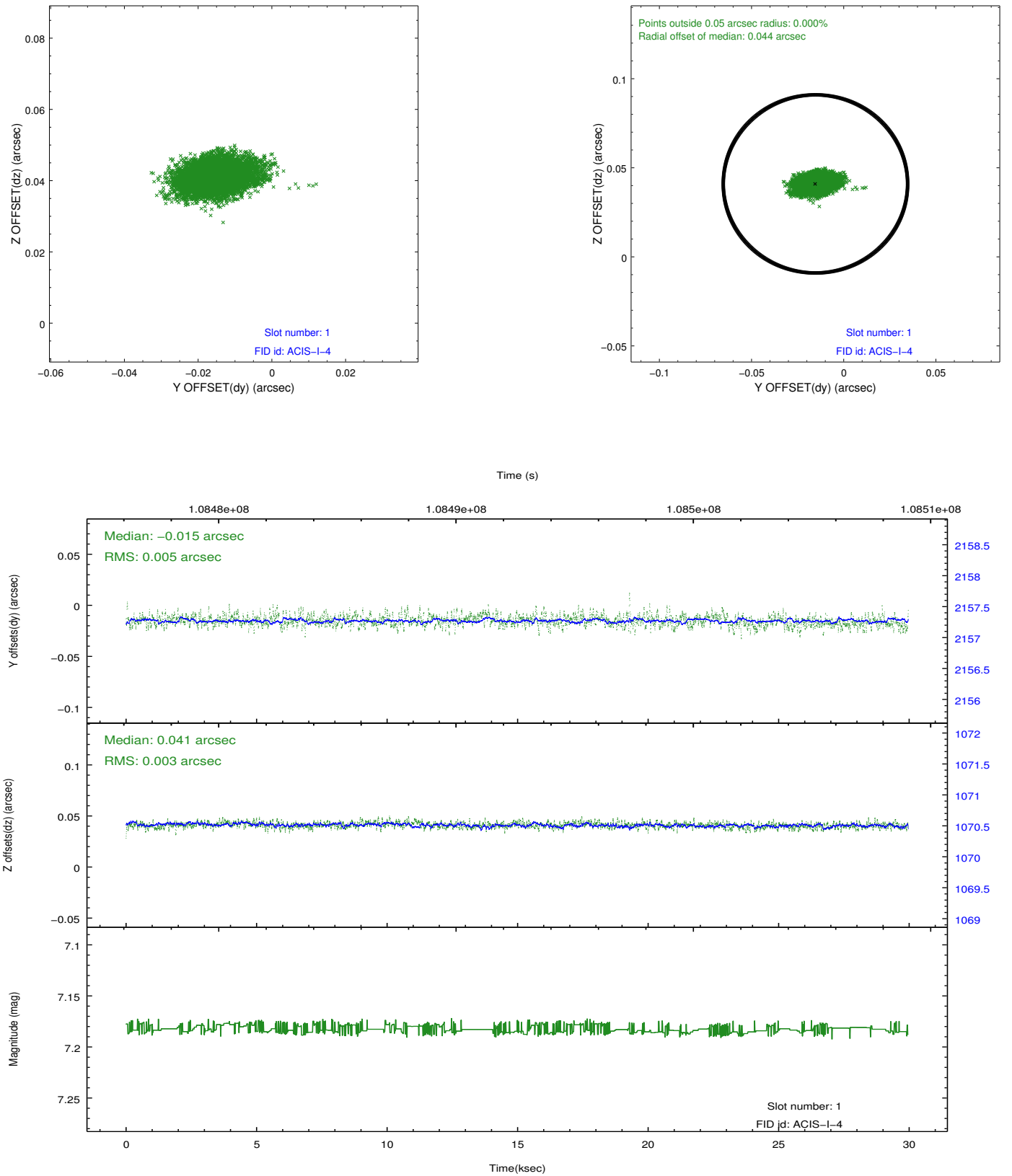


2.5 FID Slots

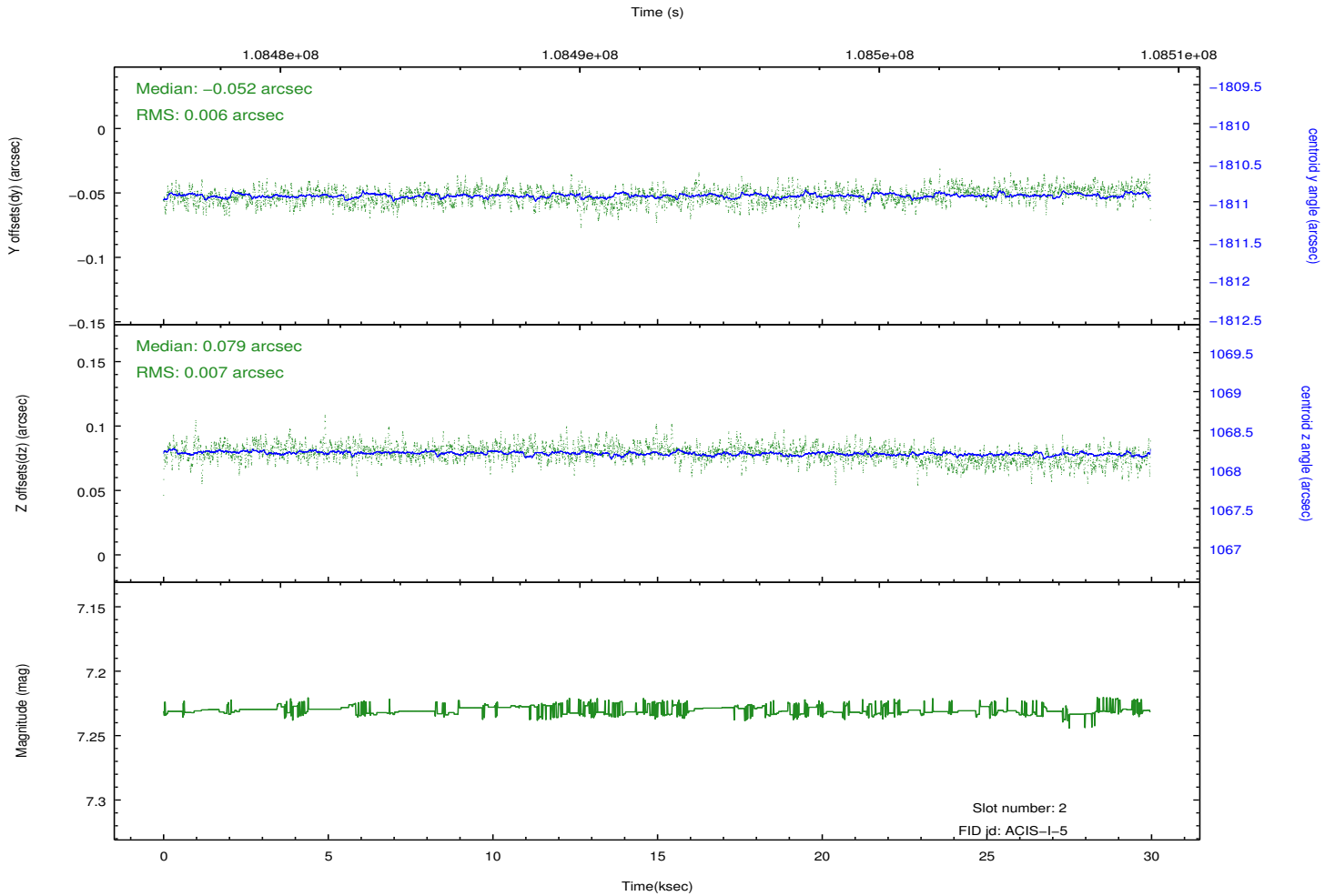
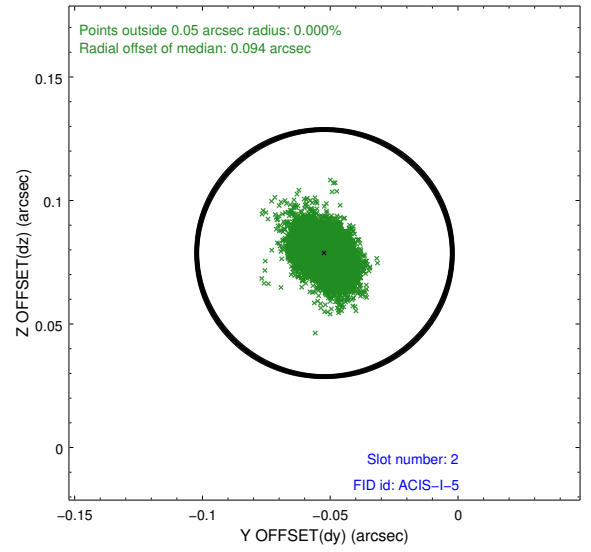
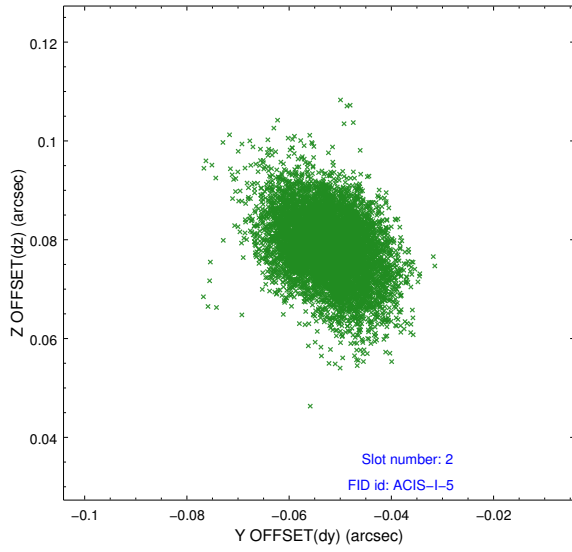
2.5.1 Slot 0



2.5.2 Slot 1



2.5.3 Slot 2



A Summary

A.1 Status

V&V Scientist	Jen Lauer
V&V Date (YYYY-MM-DD)	2012.09.20
V&V Edition	1
V&V Disposition and Status	OK
V&V Charge Time	28.8

A.2 Comments

Charge time for this ObsId remains at previous value of 28.8 ks although with the current processing the charge time would have been 28.52 ksec.