

# V&V Reference Report

## L2 ASCDS Version : 8.4.5

Observation 2278 - L2 Version 3  
Chandra X-Ray Center

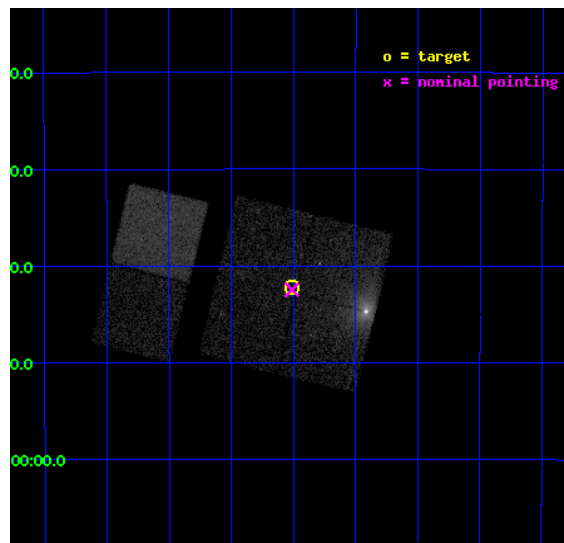
L2 Processing Date : Sep 20 2012

## Contents

<b>1</b>	<b>Front</b>	<b>2</b>
<b>2</b>	<b>OBI</b>	<b>3</b>
2.1	OBI . . . . .	3
2.1.1	Images . . . . .	3
2.1.2	Bias . . . . .	3
2.1.3	Parameters . . . . .	4
2.1.4	Events . . . . .	4
2.2	Compared Parameters . . . . .	5
2.3	Aspect . . . . .	6
2.4	Star Slots . . . . .	9
2.4.1	Slot 3 . . . . .	9
2.4.2	Slot 4 . . . . .	10
2.4.3	Slot 5 . . . . .	11
2.4.4	Slot 6 . . . . .	12
2.4.5	Slot 7 . . . . .	13
2.5	FID Slots . . . . .	14
2.5.1	Slot 0 . . . . .	14
2.5.2	Slot 1 . . . . .	15
2.5.3	Slot 2 . . . . .	16
<b>A</b>	<b>Summary</b>	<b>17</b>
A.1	Status . . . . .	17
A.2	Comments . . . . .	17

# 1 Front

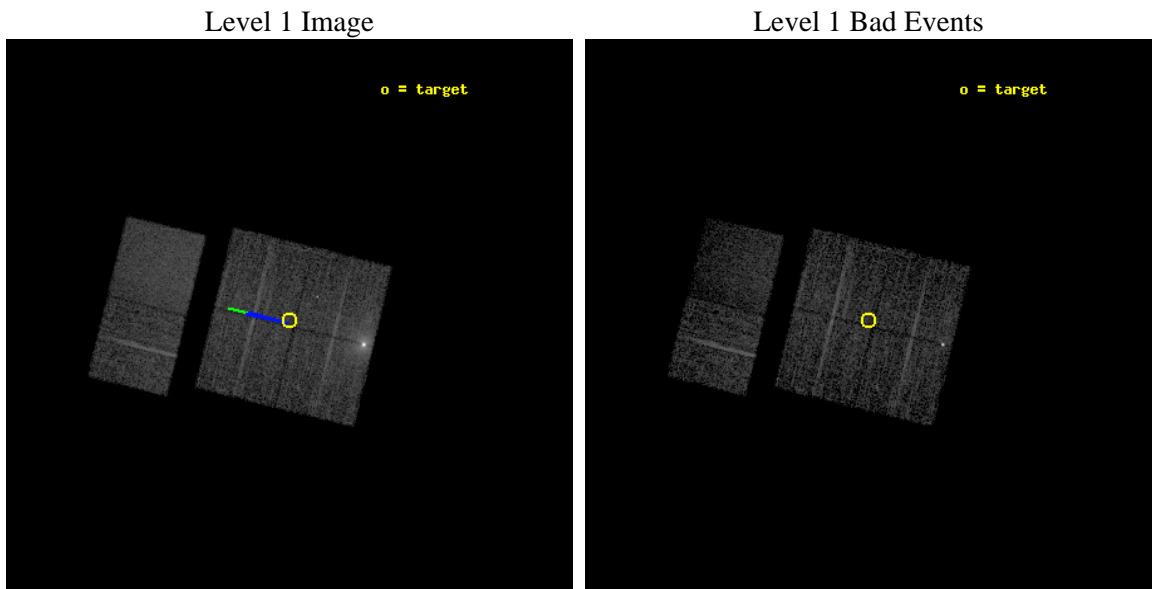
seq_num	900105	Sequence number
obs_id	2278	Observation id
title	CHANDRA SURVEY OF THE GALACTIC RIDGE AROUND THE MILKY WAY CENTER	P
observer	Prof. Q. Daniel Wang	Principal investigator
object	GCS 25	Source name
dtcycle	0	&#160
cycle	P	events from which exps? Prim/Second/Both
ra_targ	266.1288	Observer's specified target RA [deg]
dec_targ	-29.7033	Observer's specified target Dec [deg]
ra_nom	266.12795732943	Nominal RA [deg]
dec_nom	-29.70795202923	Nominal Dec [deg]
roll_nom	283.80727649788	Nominal Roll [deg]
revision	3	Processing version of data
ontime	11760.000010937	Sum of GTIs [s]
livetime	11611.087809777	Livetime [s]
ontime0	11760.000010937	Sum of GTIs [s]
ontime1	11760.000010937	Sum of GTIs [s]
ontime2	11760.000010937	Sum of GTIs [s]
ontime3	11760.000010937	Sum of GTIs [s]
ontime6	11760.000010937	Sum of GTIs [s]
ontime7	11760.000010937	Sum of GTIs [s]
l2events	82830	Number of level 2 events



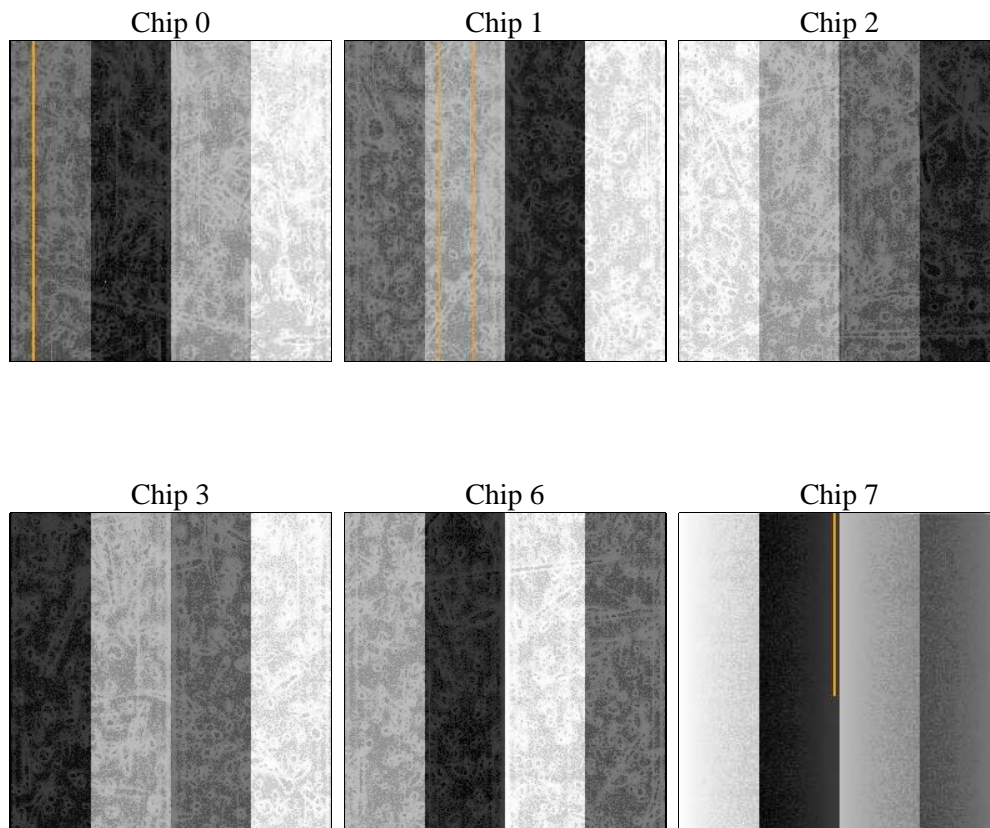
## 2 OBI

### 2.1 OBI

#### 2.1.1 Images



#### 2.1.2 Bias



### 2.1.3 Parameters

obi_num	1	Obi number	sched_exp_time	12000.000000	[s] Scheduled observation exposure time
ascdsver	8.4.5	Processing system revision	ontime	11760.000010937	Sum of GTIs [s]
caldbver	4.5.1.1	&#160	ontime0	11760.000010937	Sum of GTIs [s]
date	2012-09-20T19:24:05	Date and time of file creation	ontime1	11760.000010937	Sum of GTIs [s]
revision	3	Processing version of data	ontime2	11760.000010937	Sum of GTIs [s]
			ontime3	11760.000010937	Sum of GTIs [s]
			ontime6	11760.000010937	Sum of GTIs [s]
			ontime7	11760.000010937	Sum of GTIs [s]
			l1events	236827	Number of level 1 events

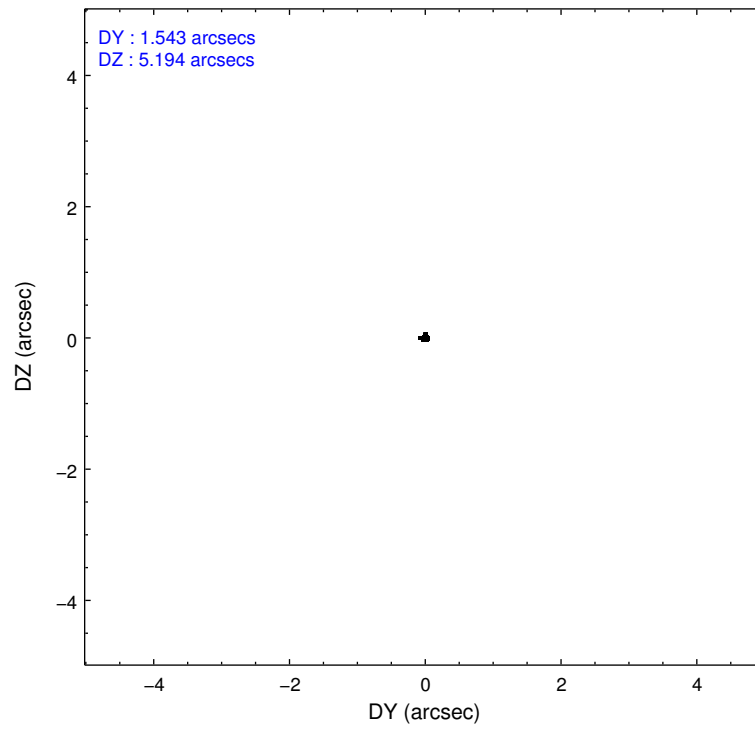
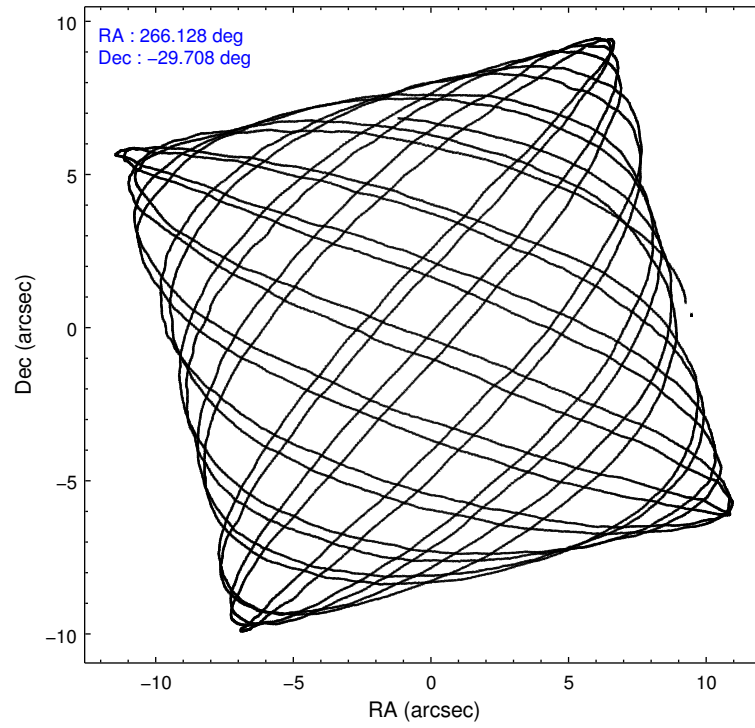
### 2.1.4 Events

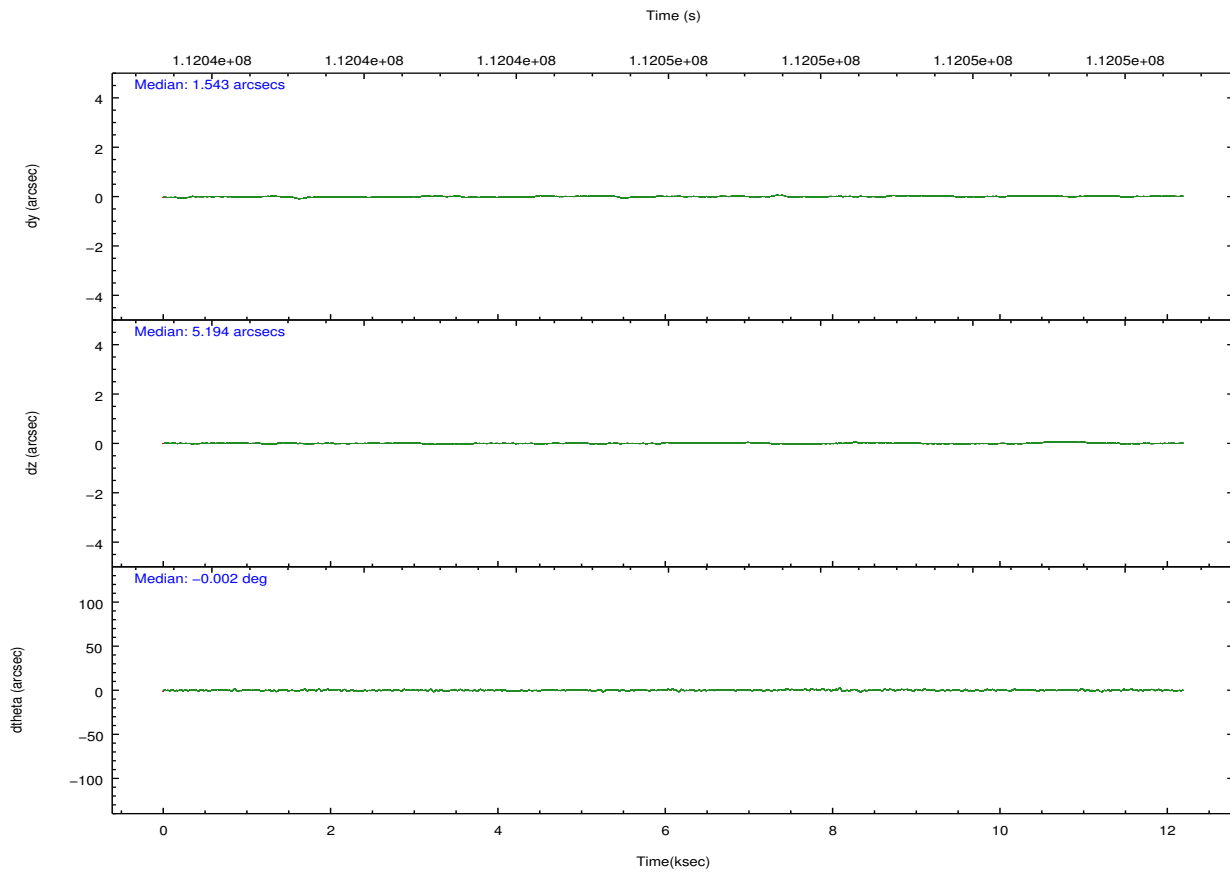
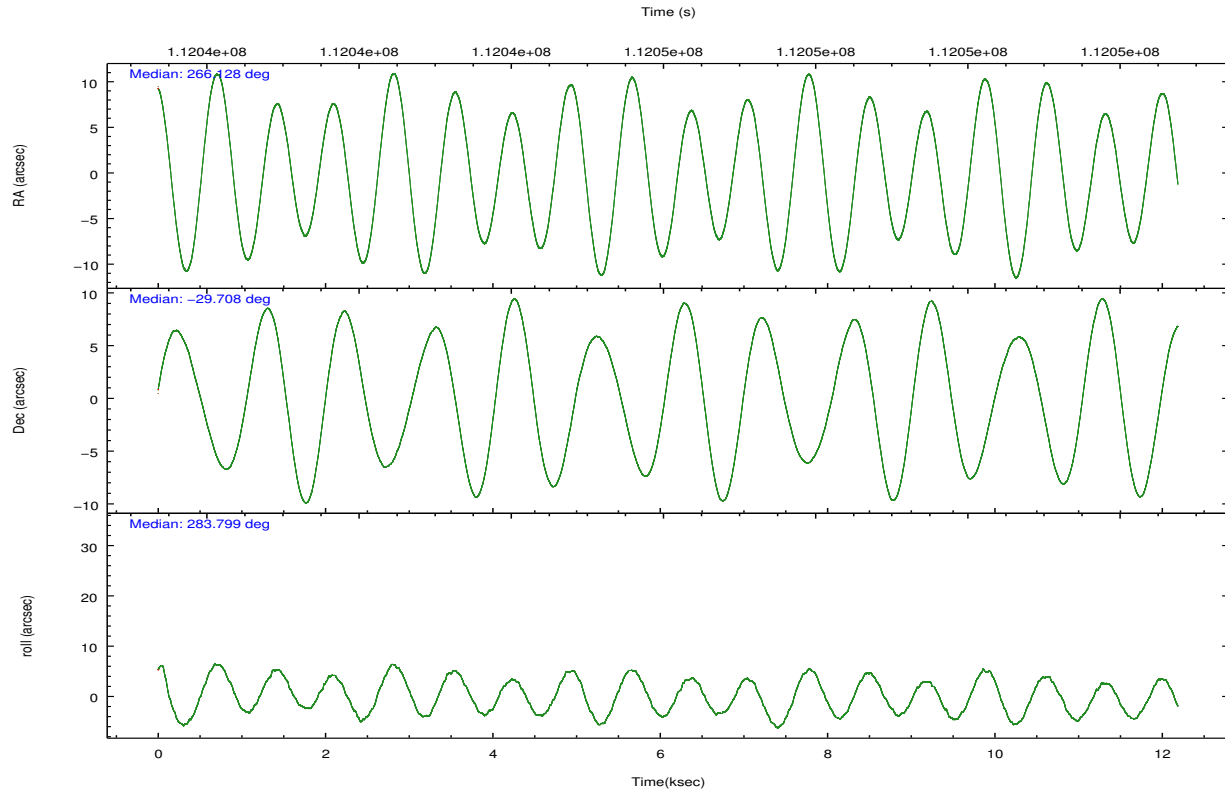
	ccd 0	ccd 1	ccd 2	ccd 3	ccd 6	ccd 7		ccd 0	ccd 1	ccd 2	ccd 3	ccd 6	ccd 7
level 1 events	51277	49599	31434	32846	32103	39568	grade 0 events	14323	13924	2868	2926	2438	2306
rejected events	26209	25592	25777	26725	26611	18041		27%	28%	9%	8%	7%	5%
rejected %	51%	51%	82%	81%	82%	45%	grade 1 events	632	495	32	30	28	42
								1%	0%	0%	0%	0%	0%
							grade 2 events	4327	4014	1066	1233	1124	4435
								8%	8%	3%	3%	3%	11%
							grade 3 events	1629	1517	450	512	479	2028
								3%	3%	1%	1%	1%	5%
							grade 4 events	1588	1631	467	476	460	2112
								3%	3%	1%	1%	1%	5%
							grade 5 events	1790	1817	1136	1347	1445	4468
								3%	3%	3%	4%	4%	11%
							grade 6 events	3213	2922	811	974	991	10646
								6%	5%	2%	2%	3%	26%
							grade 7 events	23775	23279	24604	25348	25138	13531
								46%	46%	78%	77%	78%	34%

## 2.2 Compared Parameters

Parameter	Planned	Actual	Parameter	Planned	Actual
Instrument	ACIS	ACIS	Obspar format version number	7	7
Detector	ACIS-012367	ACIS-012367	Obspar file type	PREDICTED	ACTUAL
Grating	NONE	NONE	Obspar update status	NONE	UPDATED
Data mode	FAINT	FAINT	Number of optional ACIS chips dropped	0	0
Observation mode	POINTING	POINTING	On-chip summing requested	N	N
[deg] Pointing RA	266.106042	266.1279573294304	Subarray requested	NONE	NONE
[deg] Pointing Dec	-29.688198	-29.70795202922996	Alternating exposures requested	N	N
[deg] Pointing Roll	283.587728	283.807276497876	[s] Primary exposure time	0.000000	3.2
[deg] Roll angle	283.600000	283.600000			
[deg] Roll tolerance	2.000000	2.000000			
Roll constraint allows 180D rotation	N	N			
[mm] SIM focus pos	-0.782348	-0.7809083437167272			
[mm] SIM defocus	0	0.001439871863259334			
[mm] SIM translation stage pos	-233.592463	-233.5874344608287			
[mm] SIM translation stage offset	0	-0.005018542100998502			
[s] Observation start time (MET)	112040156.184000	112039780.42342			
Observation start date	2001-07-20T18:14:52	2001-07-20T18:09:40			
[s] Observation end time (MET)	112052156.184000	112052290.03641			
Observation end date	2001-07-20T21:34:52	2001-07-20T21:38:10			
Read mode	TIMED	TIMED			

## 2.3 Aspect



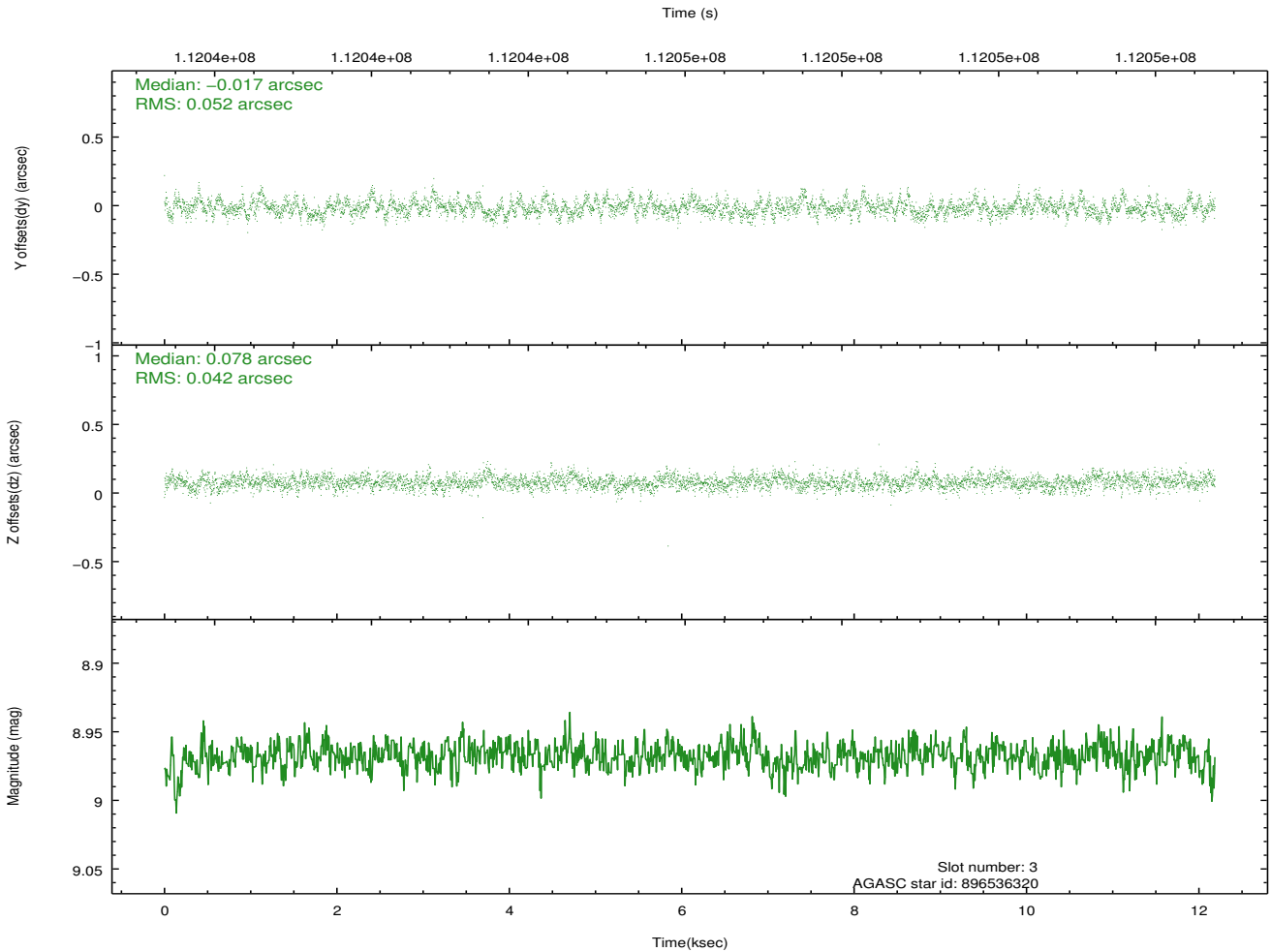
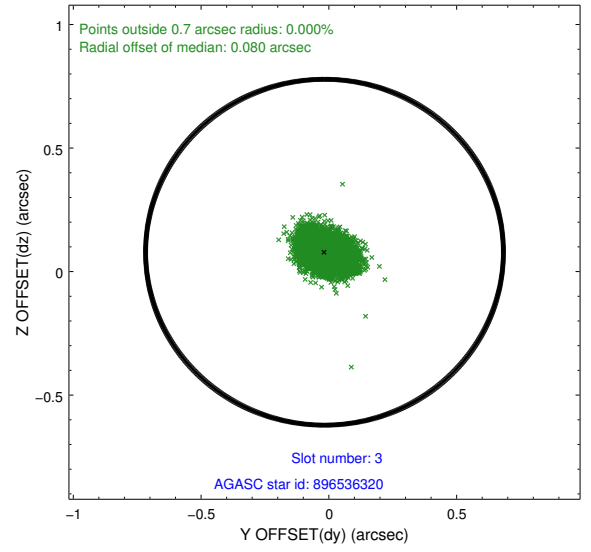
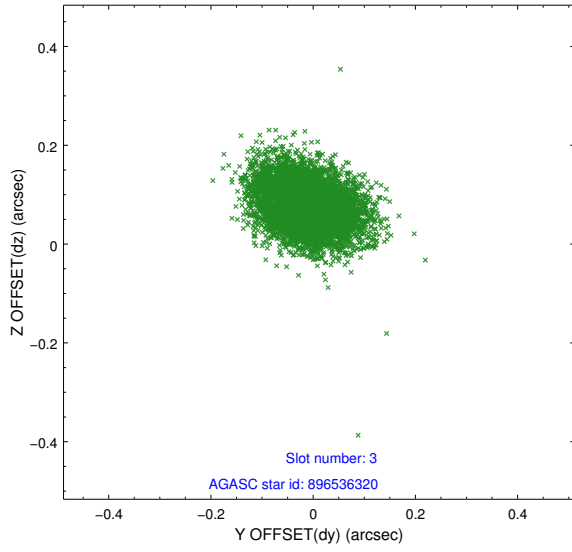


### Slot Statistics

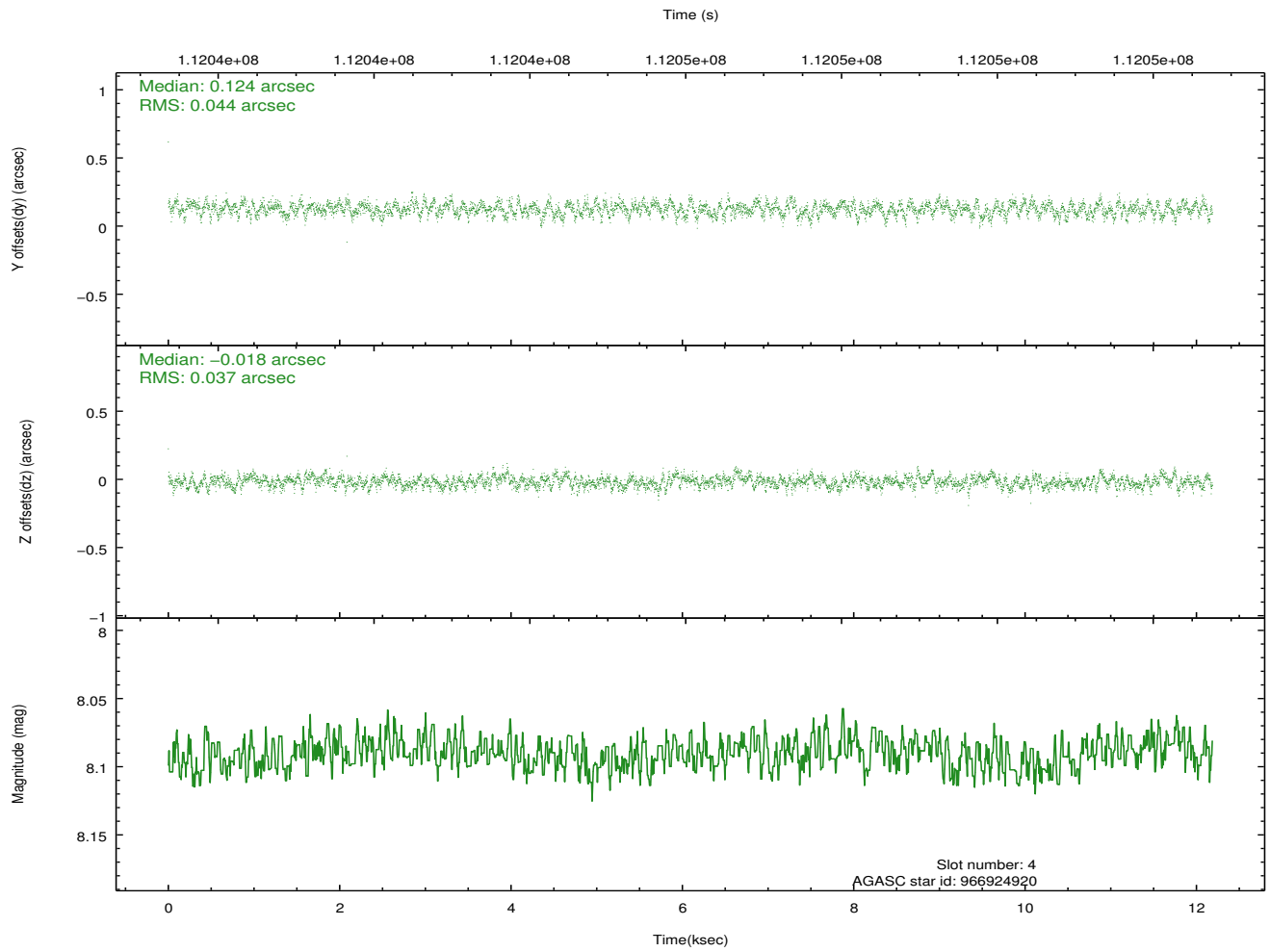
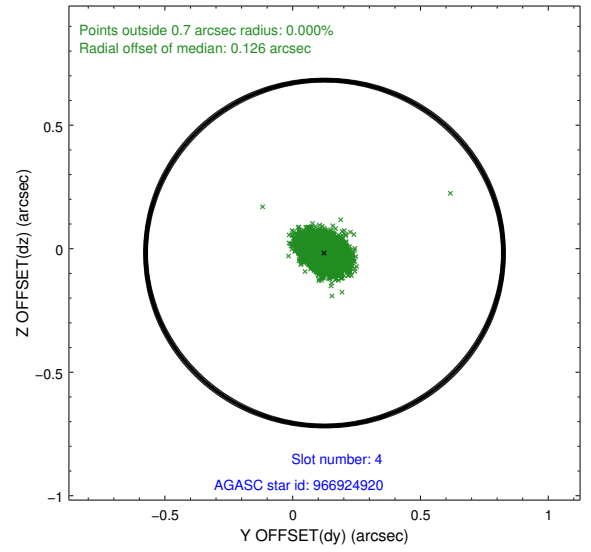
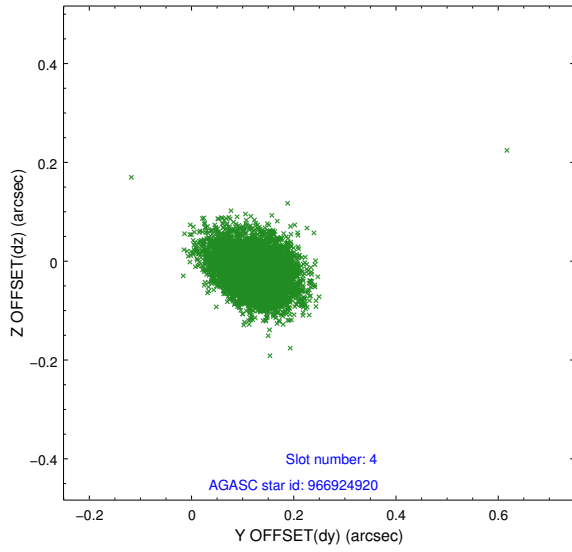
slot	status	id	mag	n_pts	med_dy	med_dz	dr1	dr2	ra	dec	mean_y	mean_z
0	FID	ACIS-I-3	7.45	2972	-0.015	0.182	0.008	0.013	0.000000	0.000000	55.70	-961.59
1	FID	ACIS-I-4	7.19	2972	-0.034	-0.062	0.006	0.011	0.000000	0.000000	2158.23	1070.97
2	FID	ACIS-I-5	7.23	2973	-0.049	-0.051	0.007	0.012	0.000000	0.000000	-1809.23	1069.32
3	GUIDE	896536320	8.97	5945	-0.017	0.078	0.070	0.117	266.369048	-29.307026	-1138.92	1125.17
4	GUIDE	966924920	8.09	5946	0.124	-0.018	0.060	0.098	265.875401	-30.176961	1542.68	-1110.32
5	GUIDE	896403224	8.27	5874	-0.088	-0.019	0.069	0.109	265.612825	-29.438915	-1231.86	-1292.84
6	GUIDE	896541168	8.14	5945	0.050	-0.060	0.050	0.081	266.319970	-29.850801	726.50	511.95
7	GUIDE	896537776	7.52	5945	-0.067	0.019	0.063	0.094	266.655684	-29.665673	329.10	1690.03

## 2.4 Star Slots

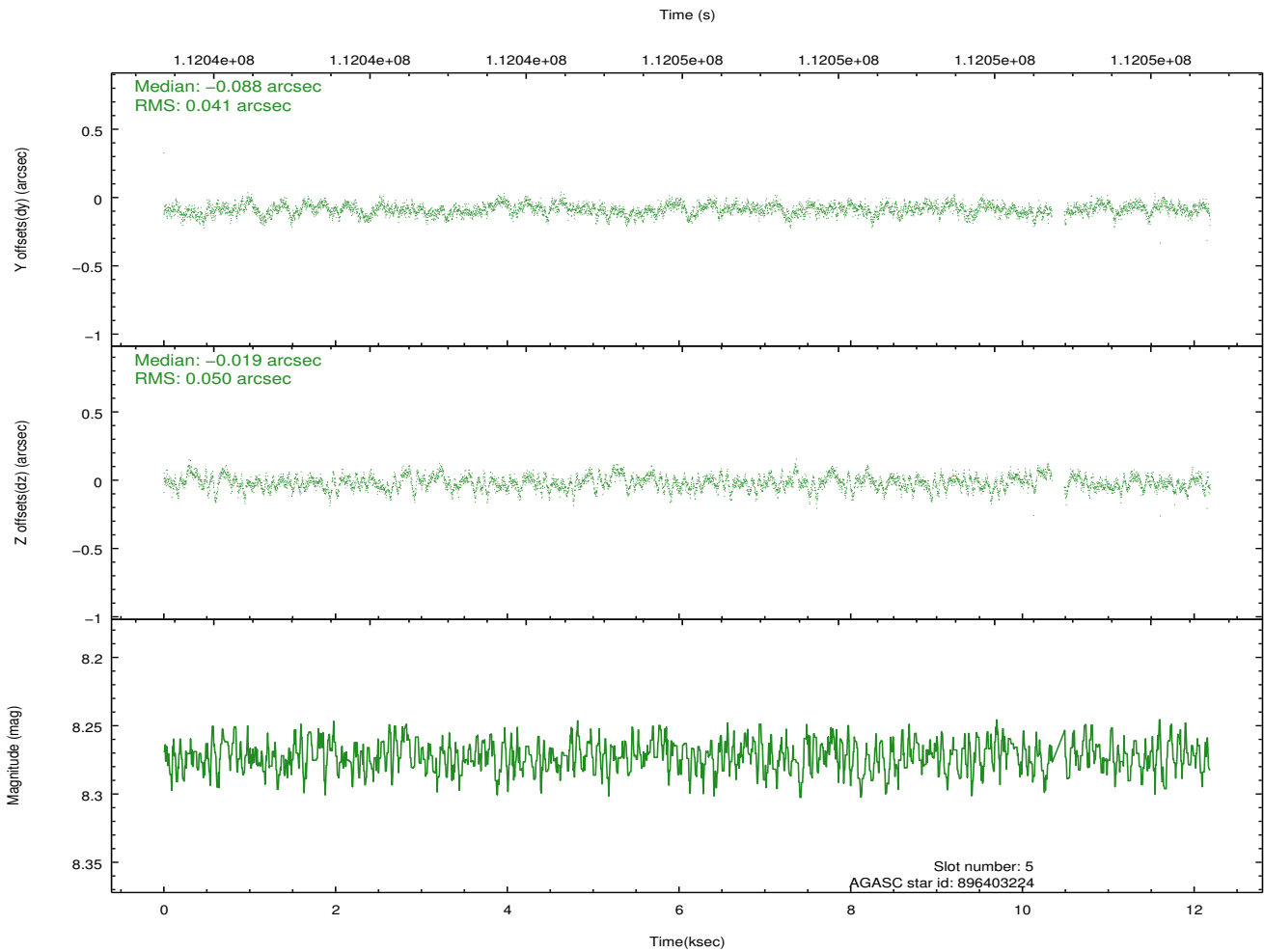
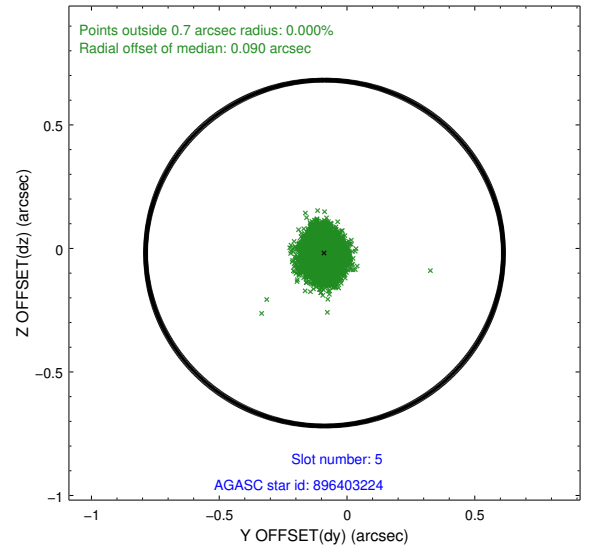
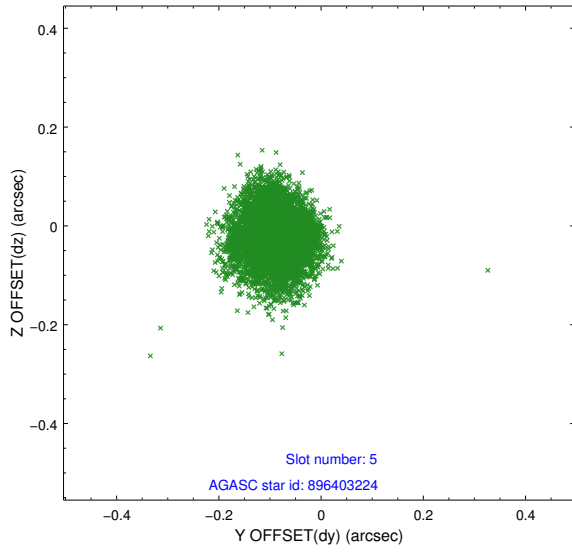
### 2.4.1 Slot 3



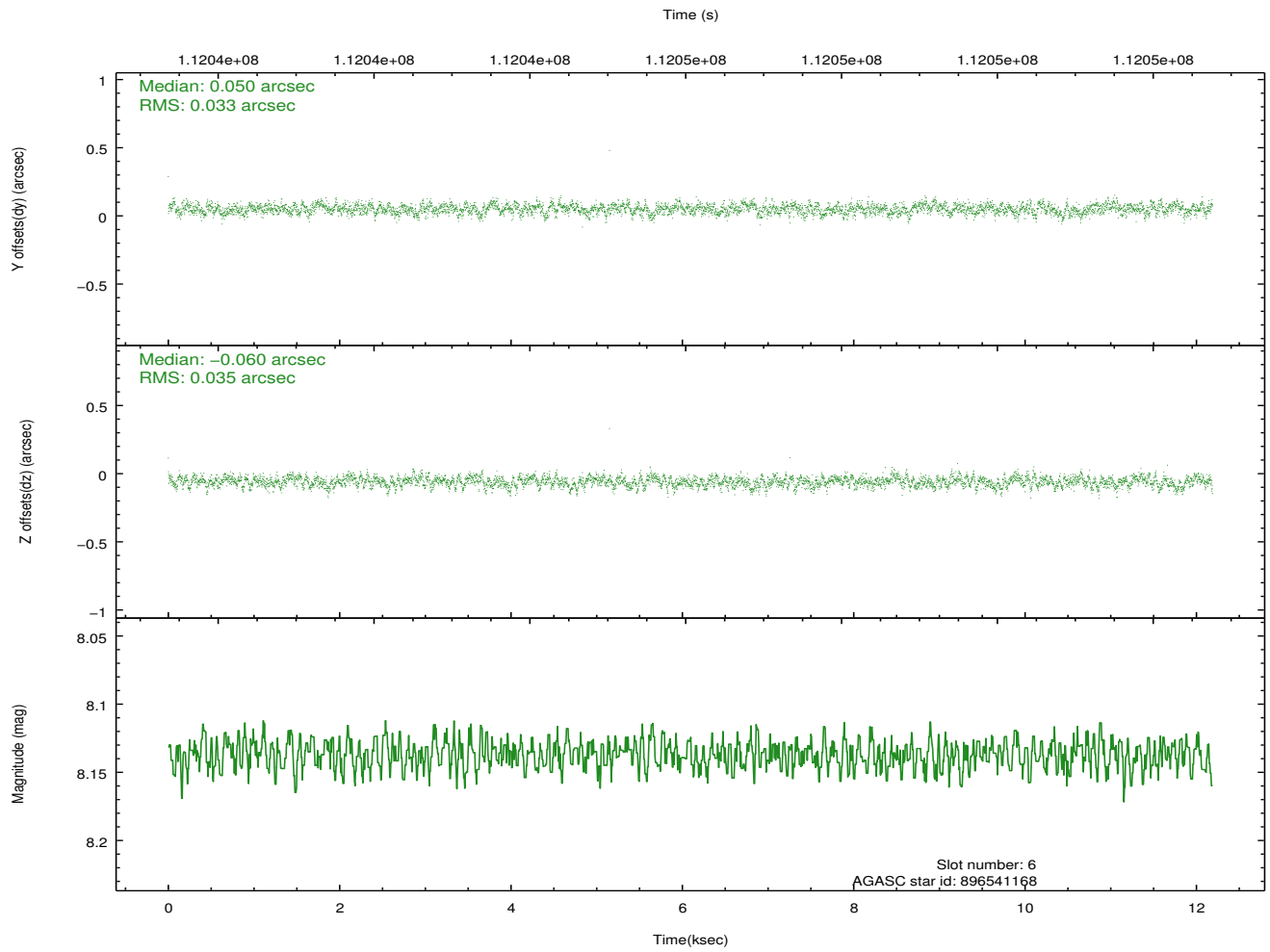
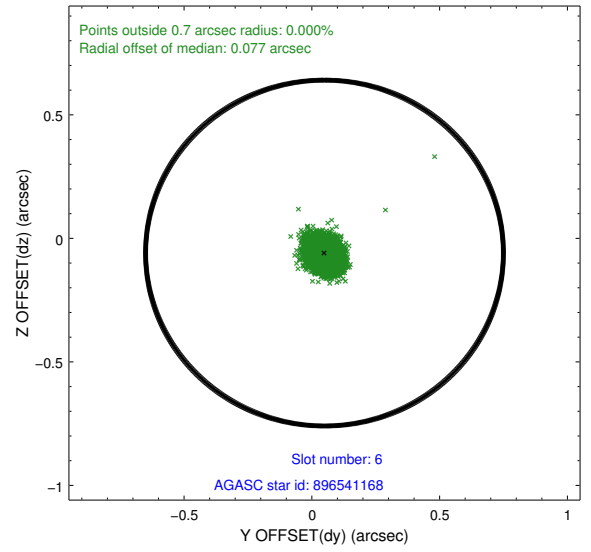
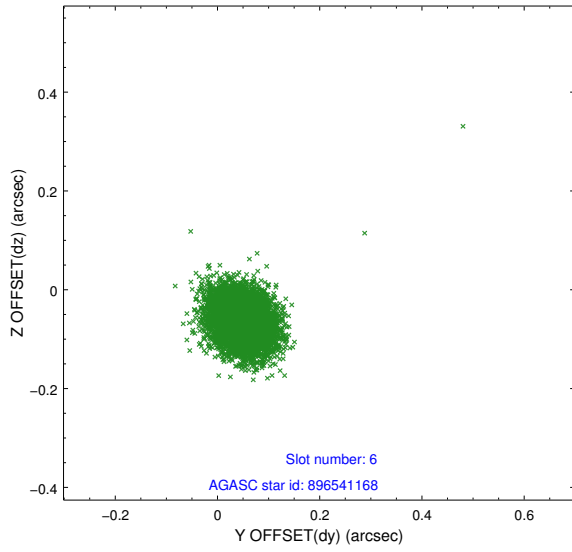
### 2.4.2 Slot 4



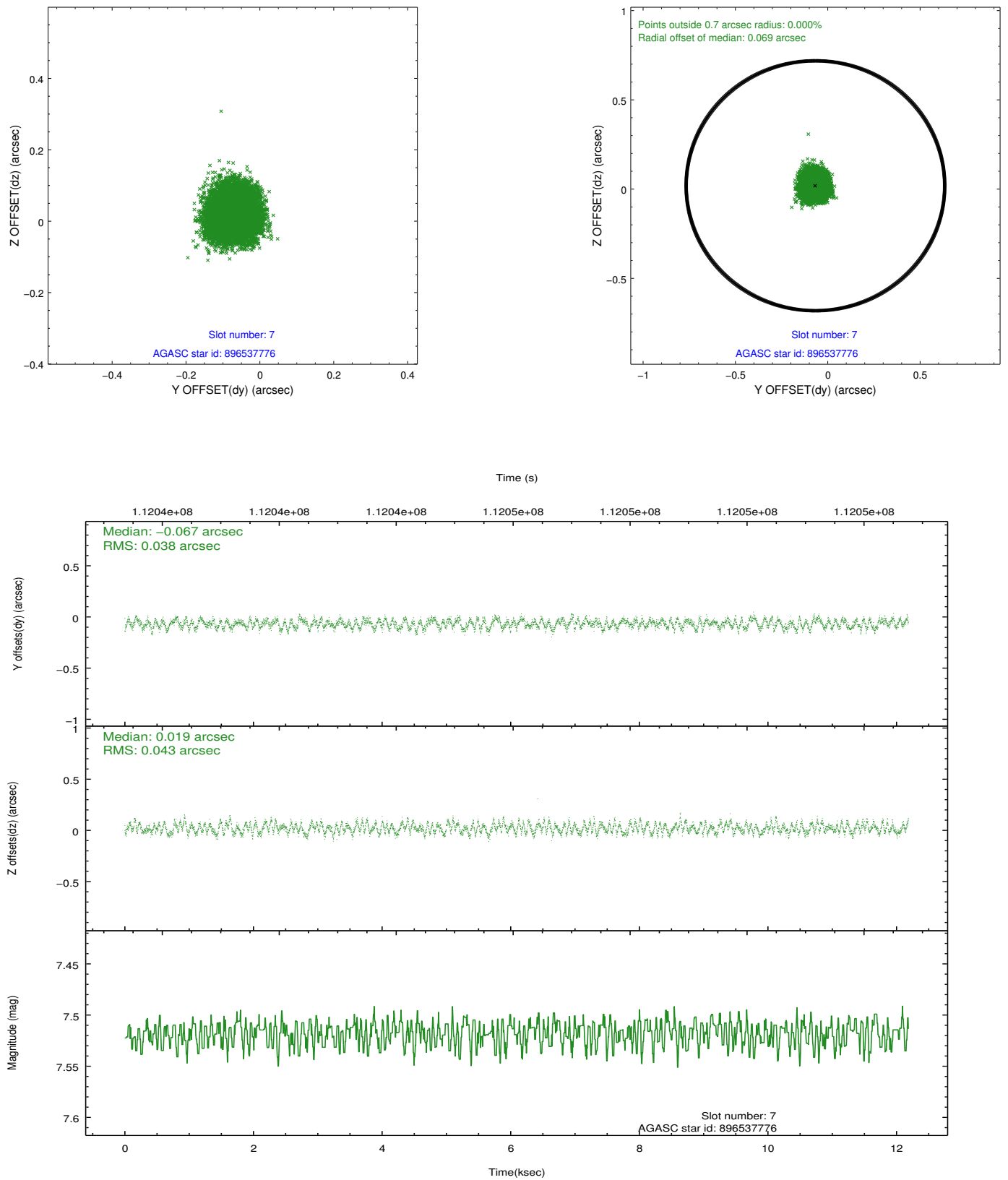
### 2.4.3 Slot 5



### 2.4.4 Slot 6

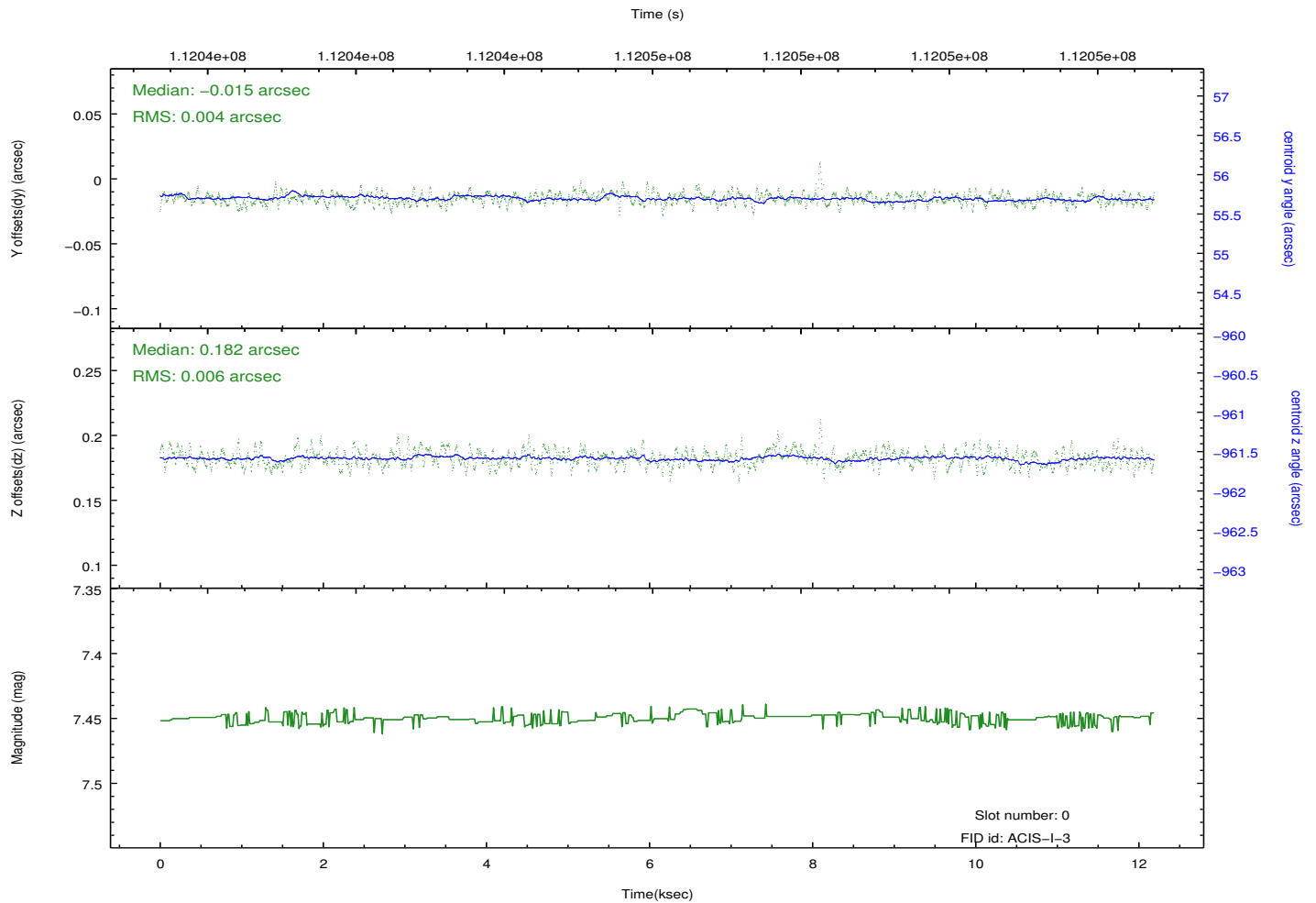
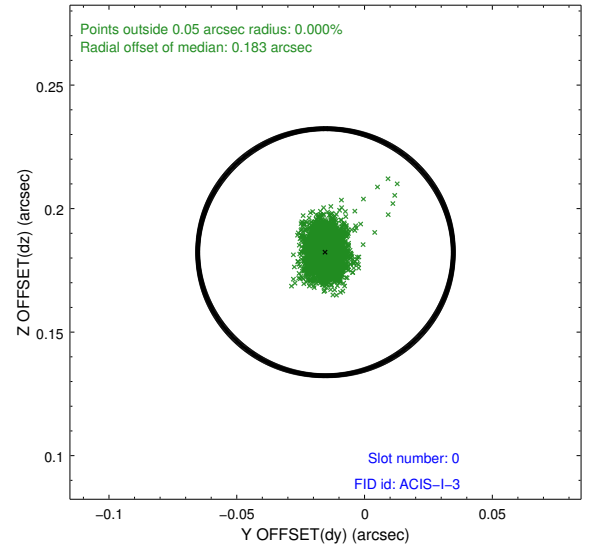
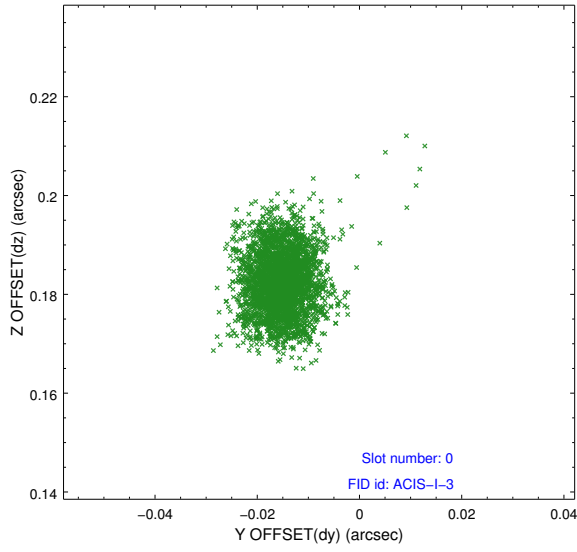


## 2.4.5 Slot 7

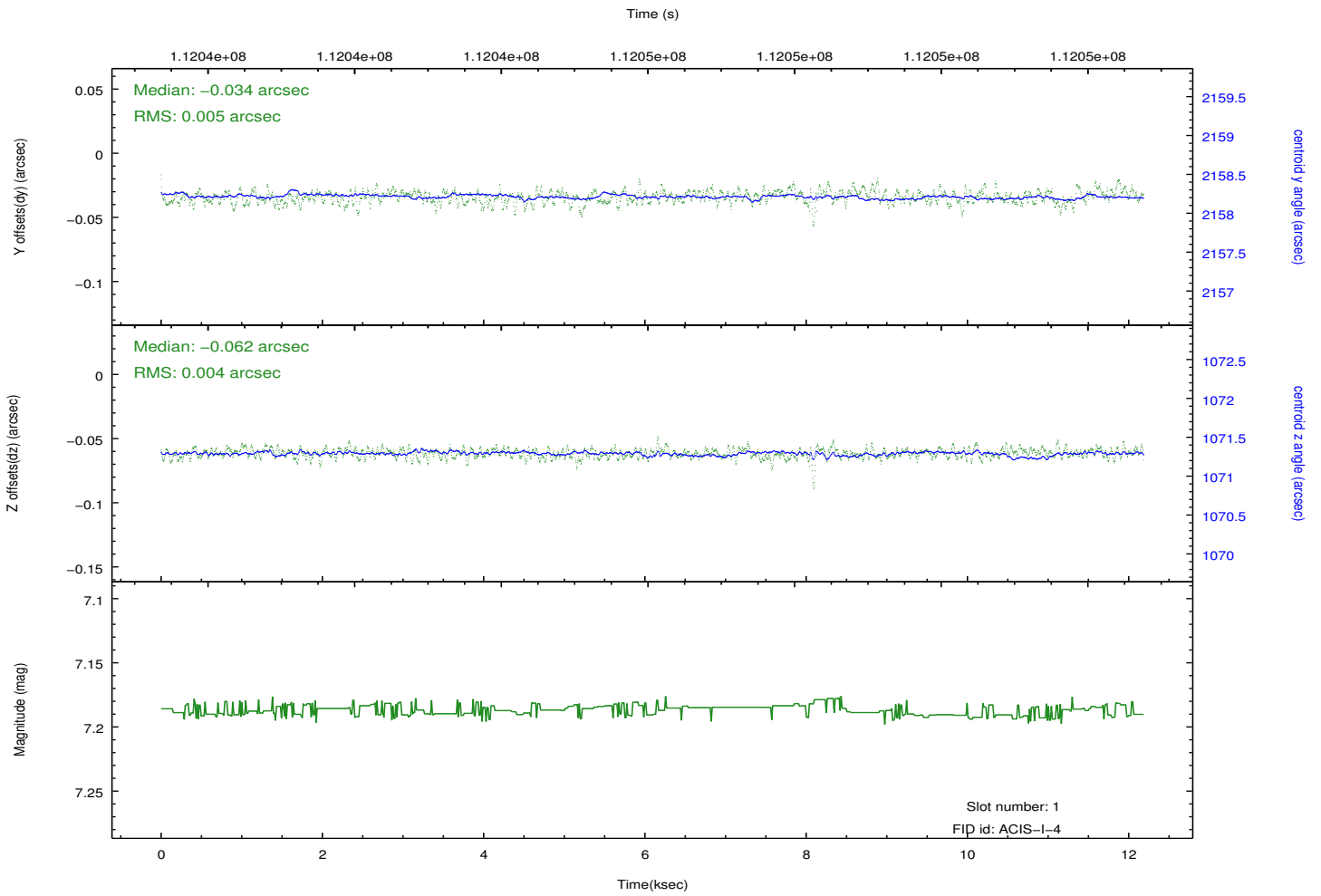
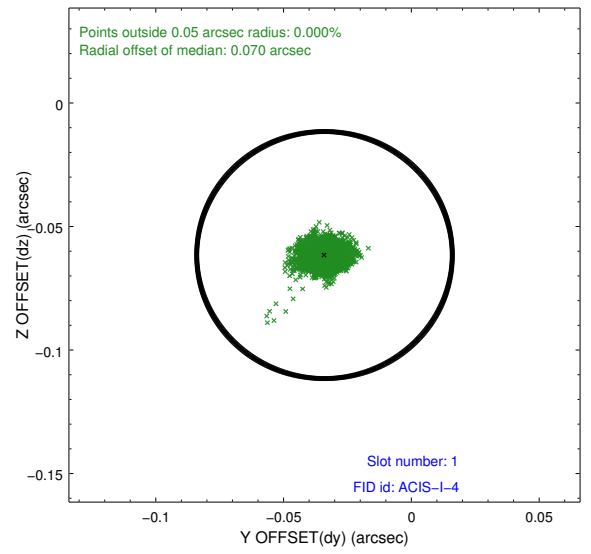
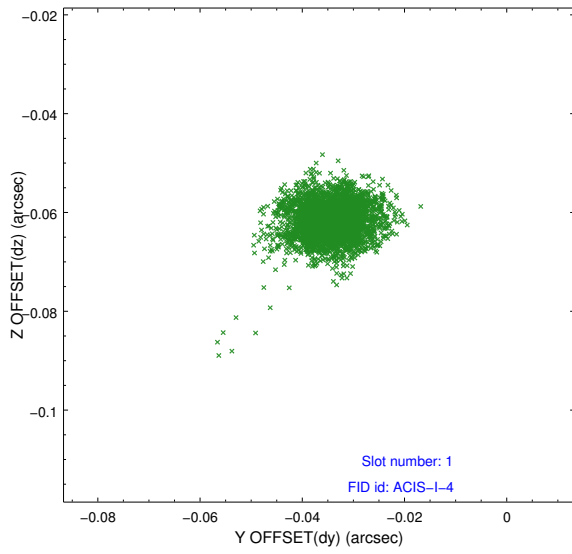


## 2.5 FID Slots

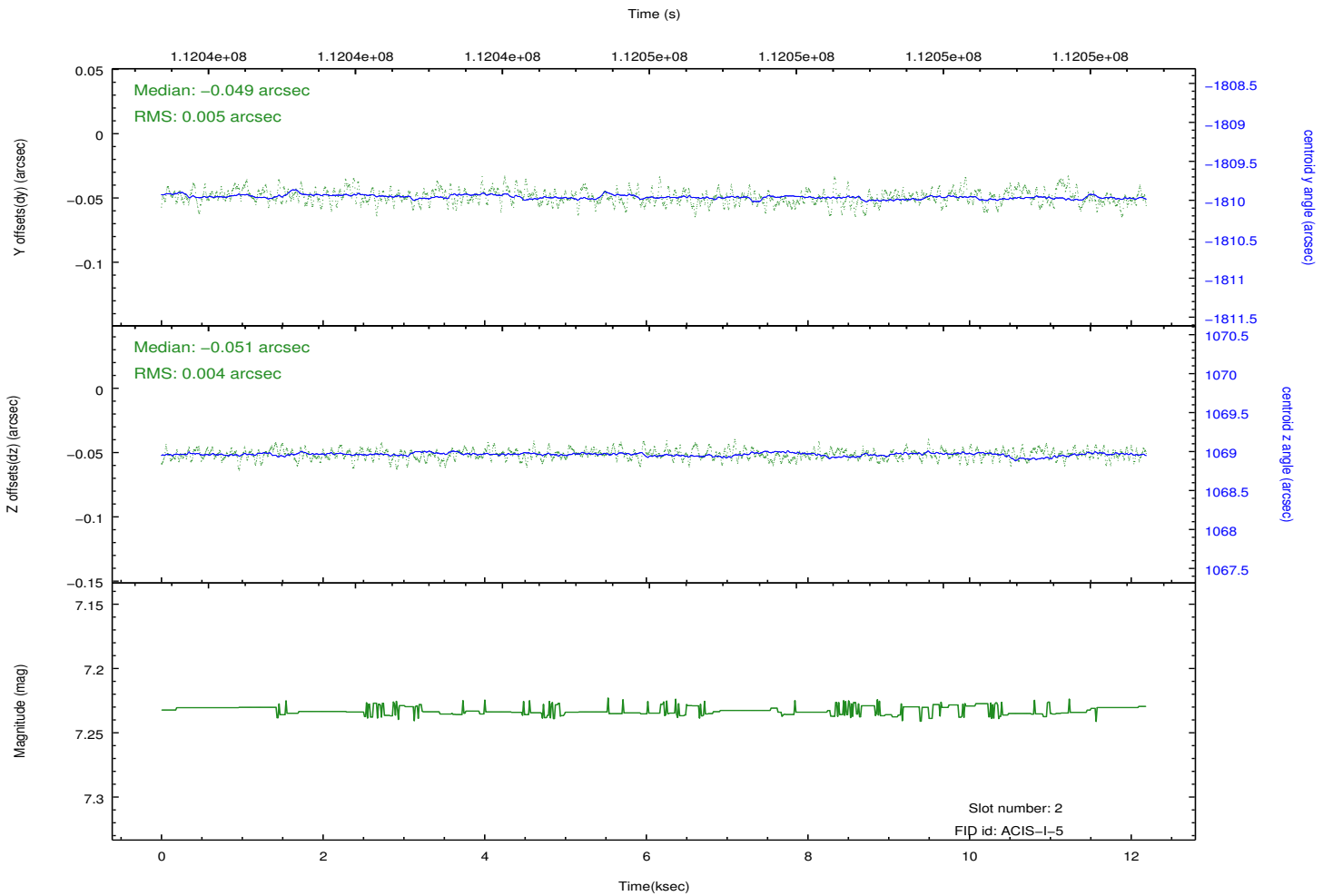
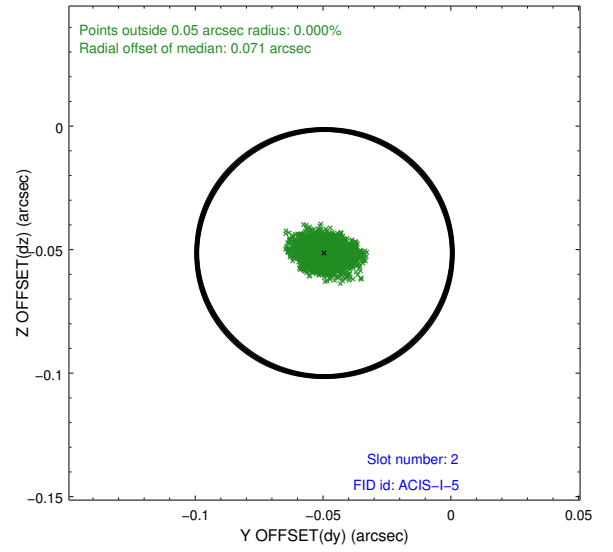
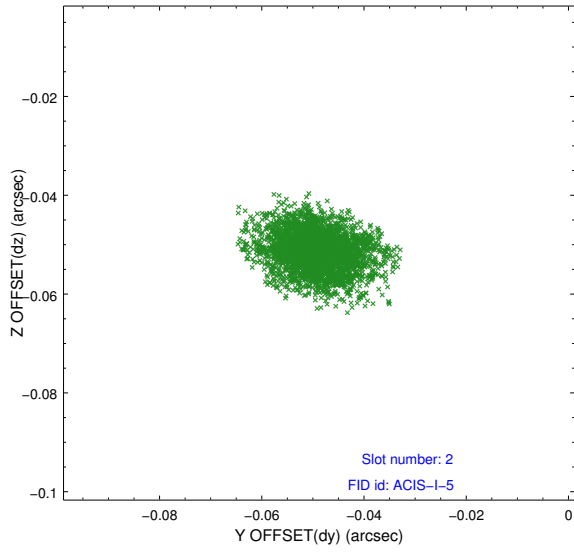
### 2.5.1 Slot 0



## 2.5.2 Slot 1



### 2.5.3 Slot 2



# A Summary

## A.1 Status

V&V Scientist	Jen Lauer
V&V Date (YYYY-MM-DD)	2012.09.24
V&V Edition	1
V&V Disposition and Status	OK
V&V Charge Time	11.8

## A.2 Comments

Charge time for this ObsId remains at previous value of 11.8 ks although with the current processing the charge time would have been 11.76 ksec. Roll constraint met.