

# V&V Reference Report

## L2 ASCDS Version : 8.4.5

Observation 2668 - L2 Version 3  
Chandra X-Ray Center

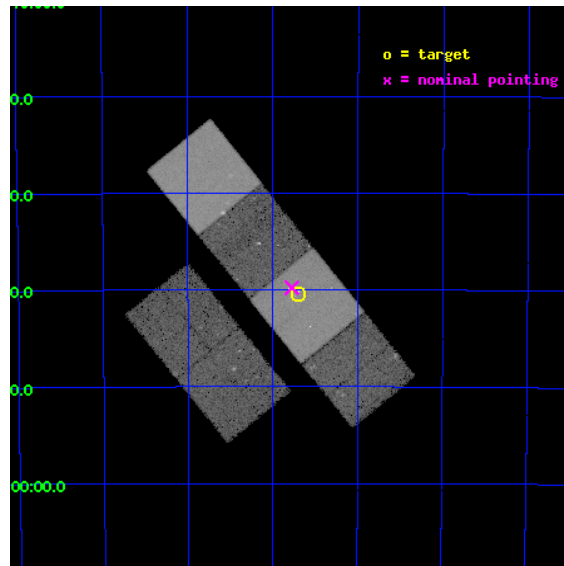
L2 Processing Date : Oct 7 2012

## Contents

<b>1</b>	<b>Front</b>	<b>2</b>
<b>2</b>	<b>OBI</b>	<b>3</b>
2.1	OBI . . . . .	3
2.1.1	Images . . . . .	3
2.1.2	Bias . . . . .	3
2.1.3	Parameters . . . . .	4
2.1.4	Events . . . . .	4
2.2	Compared Parameters . . . . .	5
2.3	Aspect . . . . .	6
2.4	Star Slots . . . . .	9
2.4.1	Slot 3 . . . . .	9
2.4.2	Slot 4 . . . . .	10
2.4.3	Slot 5 . . . . .	11
2.4.4	Slot 6 . . . . .	12
2.4.5	Slot 7 . . . . .	13
2.5	FID Slots . . . . .	14
2.5.1	Slot 0 . . . . .	14
2.5.2	Slot 1 . . . . .	15
2.5.3	Slot 2 . . . . .	16
<b>A</b>	<b>Summary</b>	<b>17</b>
A.1	Status . . . . .	17
A.2	Comments . . . . .	17

# 1 Front

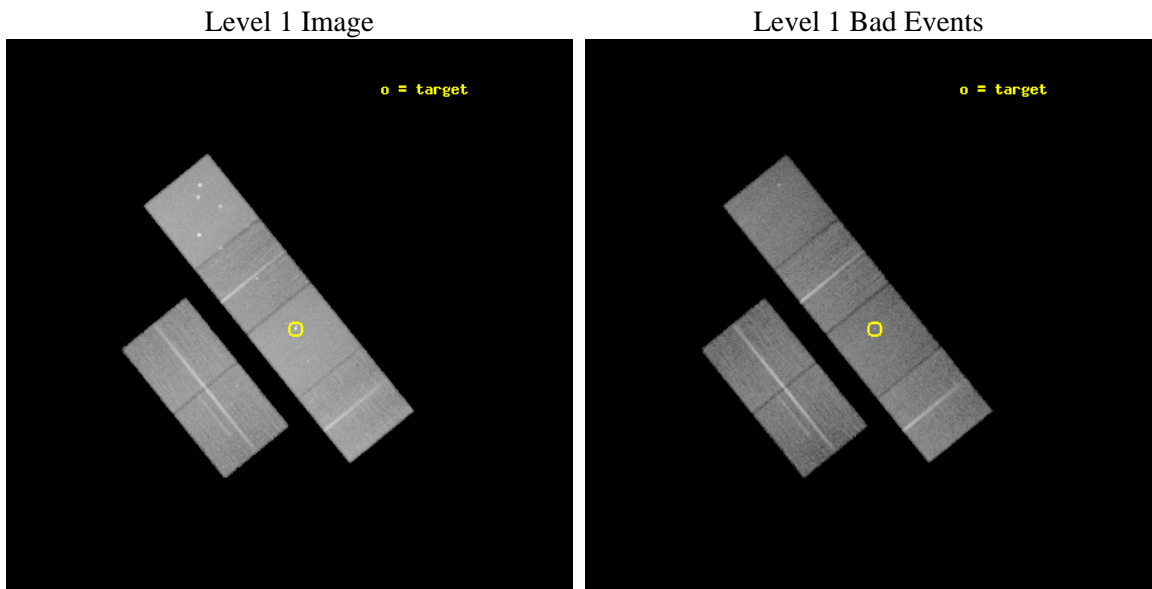
seq_num	300069	Sequence number
obs_id	2668	Observation id
title	RESOLVING THE COMPACT BINARIES IN NGC 6397	Proposal title
observer	Dr. Stephen Murray	Principal investigator
object	NGC6397	Source name
dtycycle	0	&#160
cycle	P	events from which exps? Prim/Second/Both
ra_targ	265.175	Observer's specified target RA [deg]
dec_targ	-53.674417	Observer's specified target Dec [deg]
ra_nom	265.19396469463	Nominal RA [deg]
dec_nom	-53.66329464027	Nominal Dec [deg]
roll_nom	50.962081994399	Nominal Roll [deg]
revision	3	Processing version of data
ontime	28460.799893975	Sum of GTIs [s]
livetime	28100.412108681	Livetime [s]
ontime2	28460.799893975	Sum of GTIs [s]
ontime3	28457.558913708	Sum of GTIs [s]
ontime5	28460.799893975	Sum of GTIs [s]
ontime6	28460.799893975	Sum of GTIs [s]
ontime7	28460.799893975	Sum of GTIs [s]
ontime8	28460.799893975	Sum of GTIs [s]
l2events	300911	Number of level 2 events



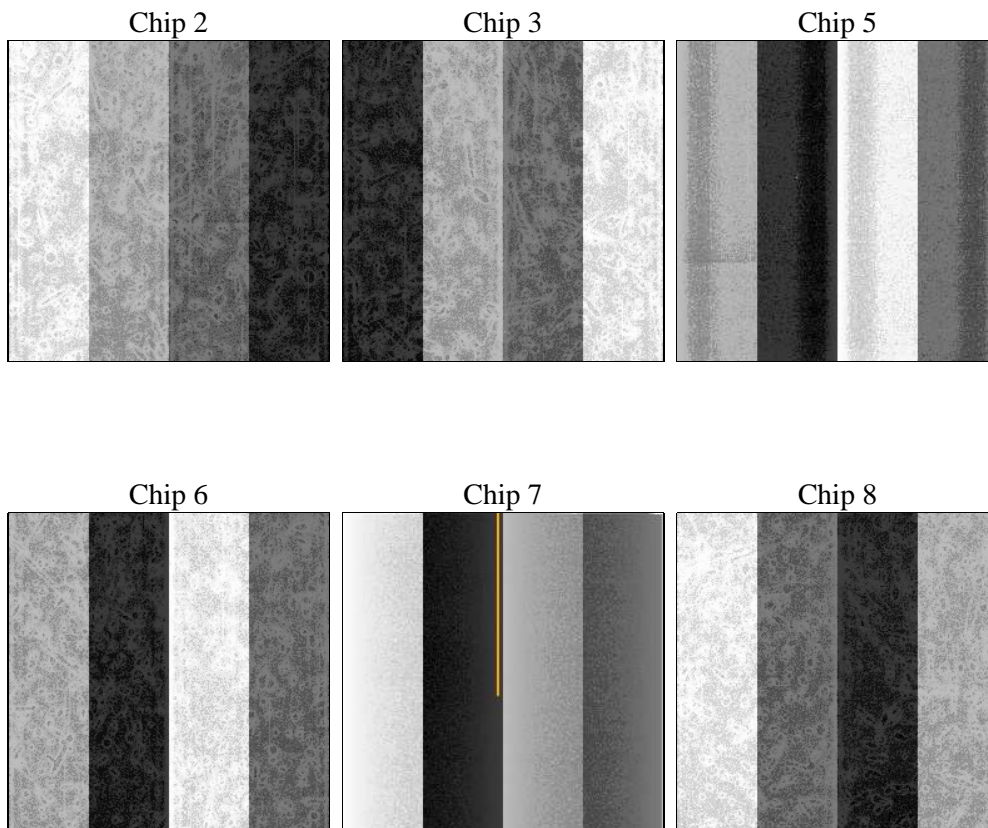
## 2 OBI

### 2.1 OBI

#### 2.1.1 Images



#### 2.1.2 Bias



### 2.1.3 Parameters

obi_num	1	Obi number	sched_exp_time	28500.000000	[s] Scheduled observation exposure time
ascdsver	8.4.5	Processing system revision	ontime	28460.799893975	Sum of GTIs [s]
caldbver	4.5.2	&#160	ontime2	28460.799893975	Sum of GTIs [s]
date	2012-10-07T11:50:35	Date and time of file creation	ontime3	28457.558913708	Sum of GTIs [s]
revision	3	Processing version of data	ontime5	28460.799893975	Sum of GTIs [s]
			ontime6	28460.799893975	Sum of GTIs [s]
			ontime7	28460.799893975	Sum of GTIs [s]
			ontime8	28460.799893975	Sum of GTIs [s]
			l1events	1284749	Number of level 1 events

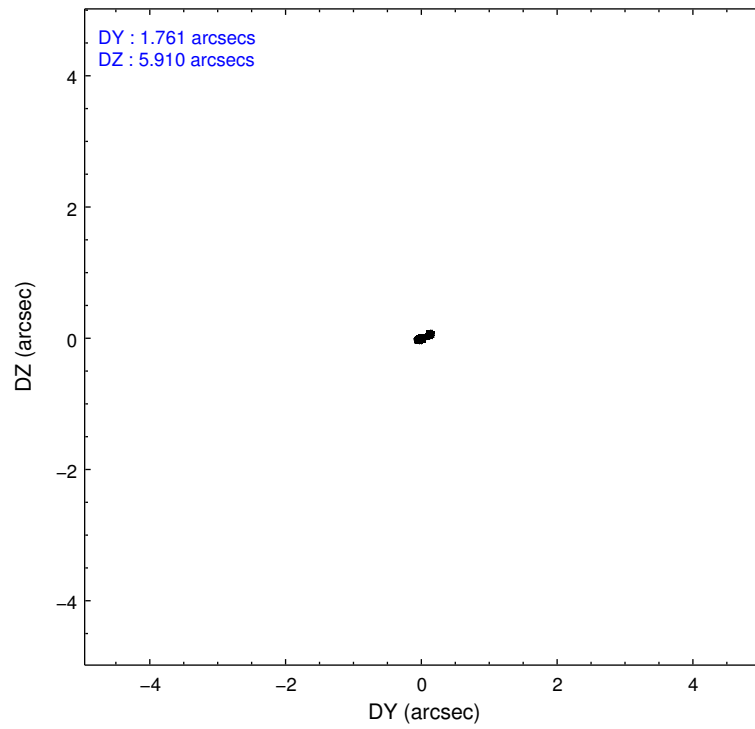
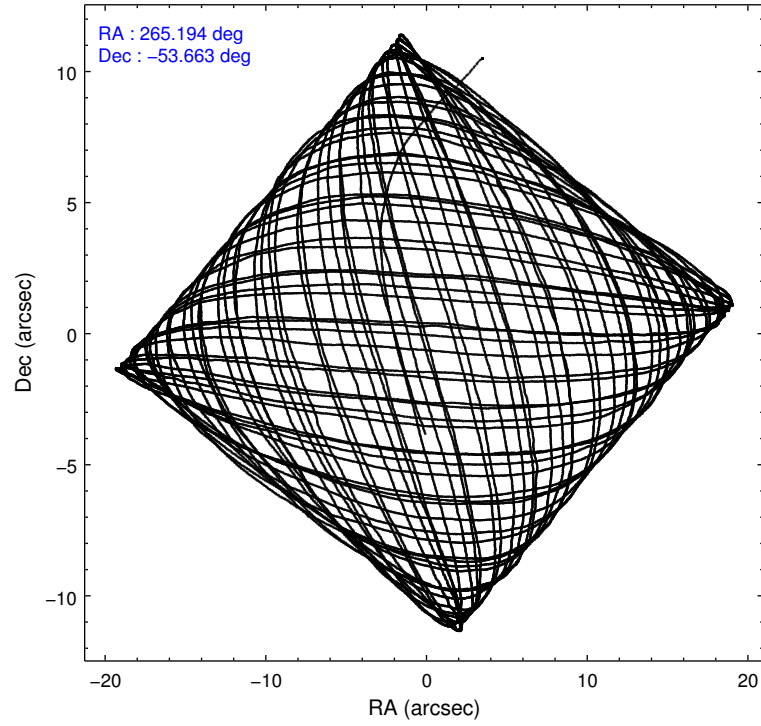
### 2.1.4 Events

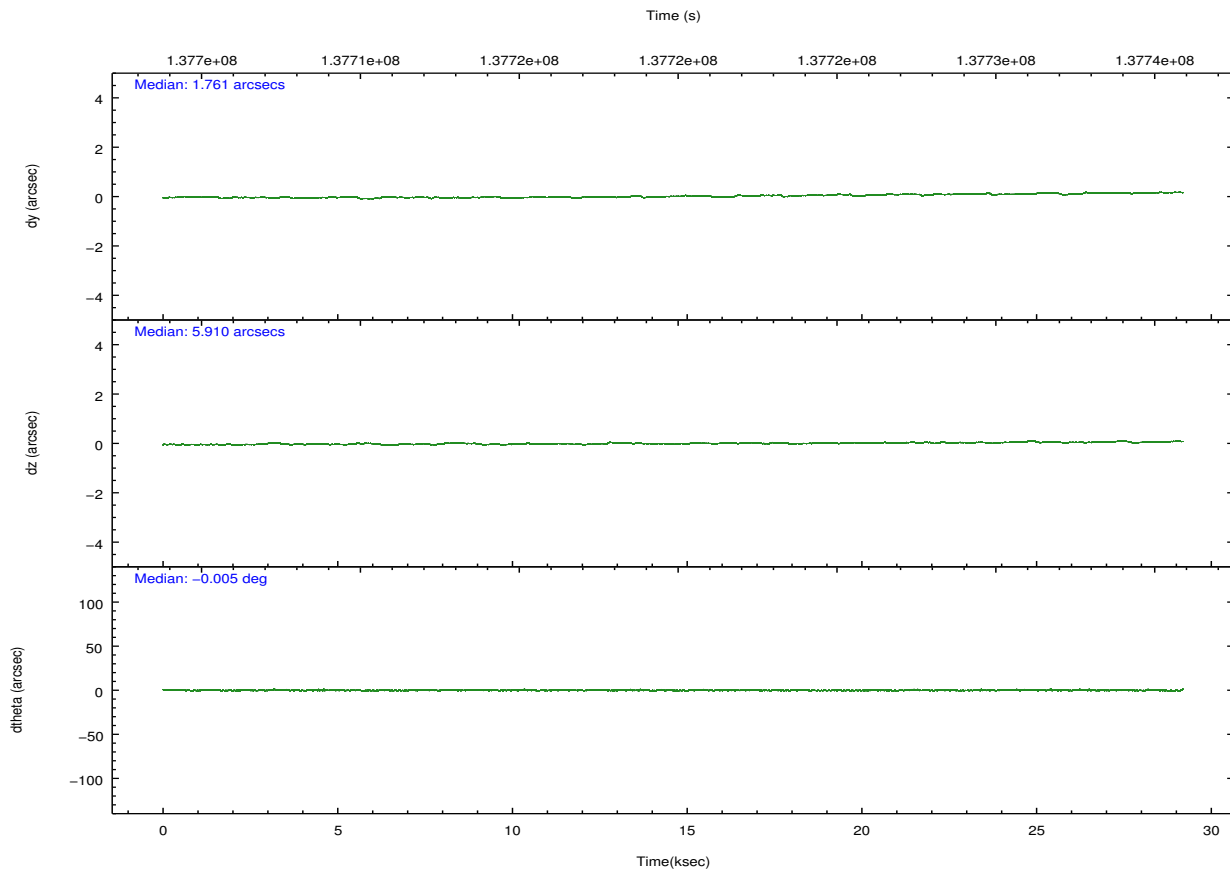
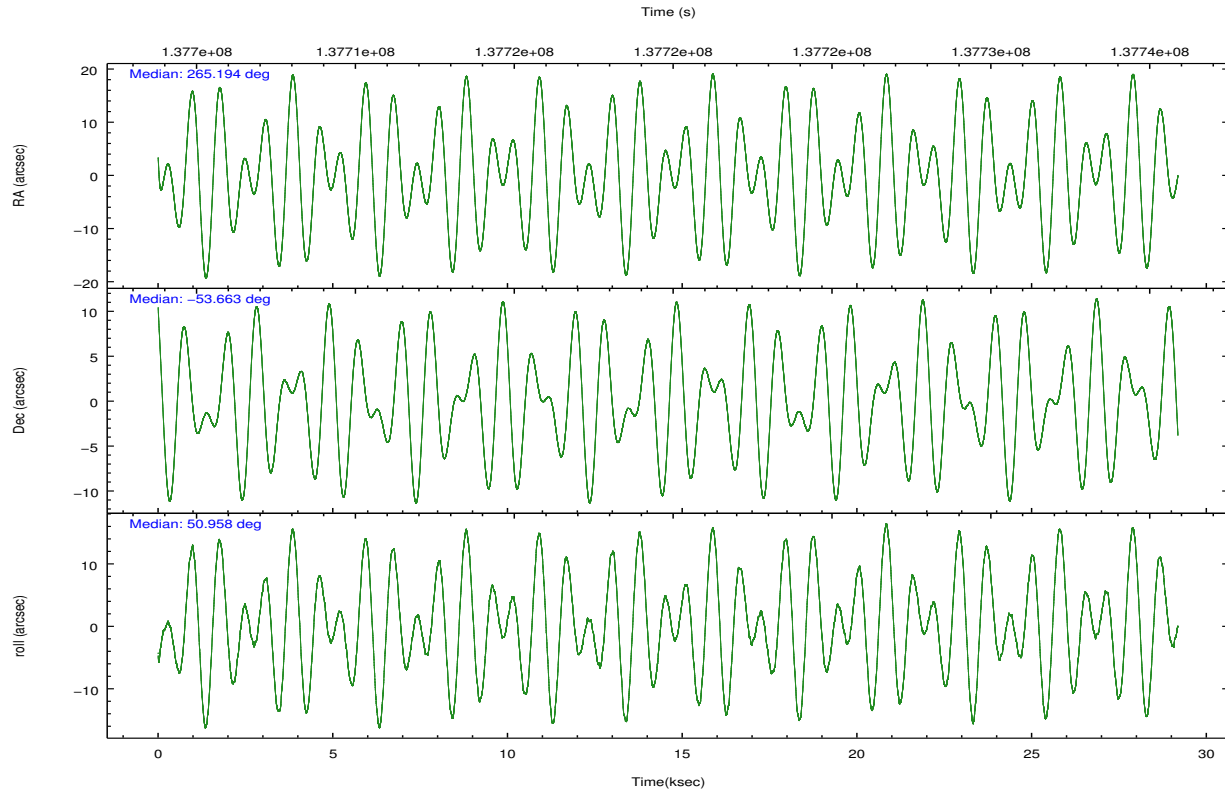
	ccd 2	ccd 3	ccd 5	ccd 6	ccd 7	ccd 8		ccd 2	ccd 3	ccd 5	ccd 6	ccd 7	ccd 8
level 1 events	184561	173618	266861	185256	246636	227817	grade 0 events	9702	9813	19164	10665	12552	15858
rejected events	162809	152033	139895	161661	138212	180017		5%	5%	7%	5%	5%	6%
rejected %	88%	87%	52%	87%	56%	79%	grade 1 events	99	102	631	93	256	143
								0%	0%	0%	0%	0%	0%
							grade 2 events	4589	4128	35340	4471	21833	10140
								2%	2%	13%	2%	8%	4%
							grade 3 events	1905	1957	5359	2108	10092	5080
								1%	1%	2%	1%	4%	2%
							grade 4 events	1949	1957	5300	2094	9973	4689
								1%	1%	1%	1%	4%	2%
							grade 5 events	6690	7017	19542	8060	23063	10273
								3%	4%	7%	4%	9%	4%
							grade 6 events	3610	3733	61823	4259	53978	12037
								1%	2%	23%	2%	21%	5%
							grade 7 events	156017	144911	119702	153506	114889	169597
								84%	83%	44%	82%	46%	74%

## 2.2 Compared Parameters

Parameter	Planned	Actual	Parameter	Planned	Actual
Instrument	ACIS	ACIS	Obspar format version number	7	7
Detector	ACIS-235678	ACIS-235678	Obspar file type	PREDICTED	ACTUAL
Grating	NONE	NONE	Obspar update status	NONE	UPDATED
Data mode	FAINT	FAINT	Number of optional ACIS chips dropped	0	0
Observation mode	POINTING	POINTING	On-chip summing requested	N	N
[deg] Pointing RA	265.187317	265.193964694632	Subarray requested	NONE	NONE
[deg] Pointing Dec	-53.690269	-53.66329464026996	Alternating exposures requested	N	N
[deg] Pointing Roll	50.800100	50.96208199439856	[s] Primary exposure time	0.000000	3.2
[mm] SIM focus pos	-0.684267	-0.6828225247311905			
[mm] SIM defocus	0	0.001444936568705701			
[mm] SIM translation stage pos	-190.132523	-190.1400660498719			
[mm] SIM translation stage offset	0	0.00754346686406393			
[s] Observation start time (MET)	137705936.184000	137704724.67625			
Observation start date	2002-05-13T19:37:52	2002-05-13T19:18:44			
[s] Observation end time (MET)	137734436.184000	137735003.68998			
Observation end date	2002-05-14T03:32:52	2002-05-14T03:43:23			
Read mode	TIMED	TIMED			

## 2.3 Aspect



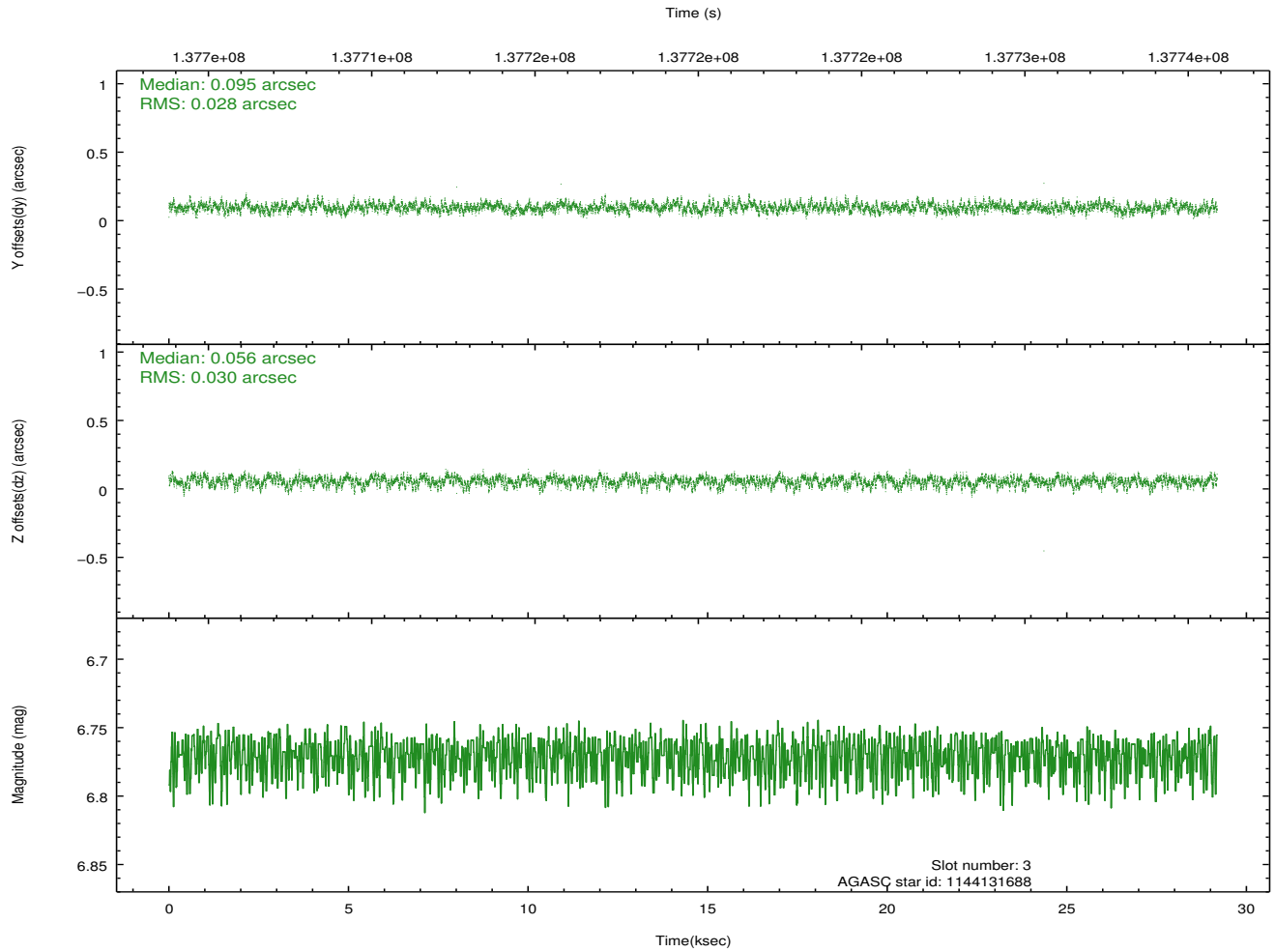
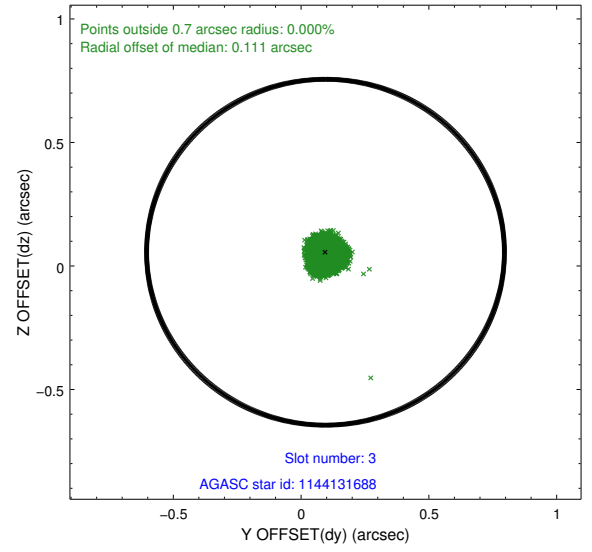
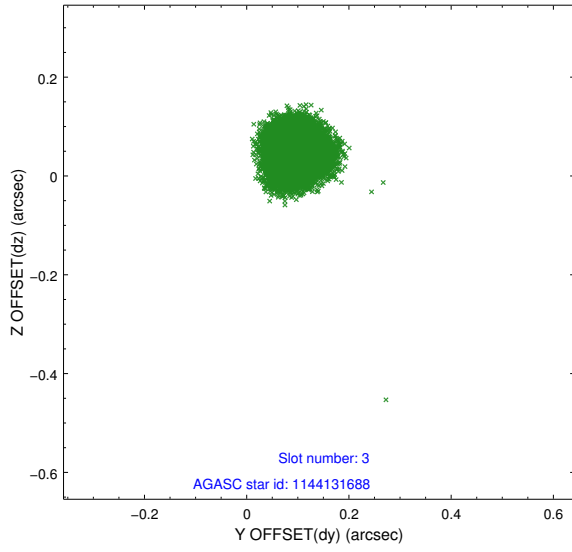


### Slot Statistics

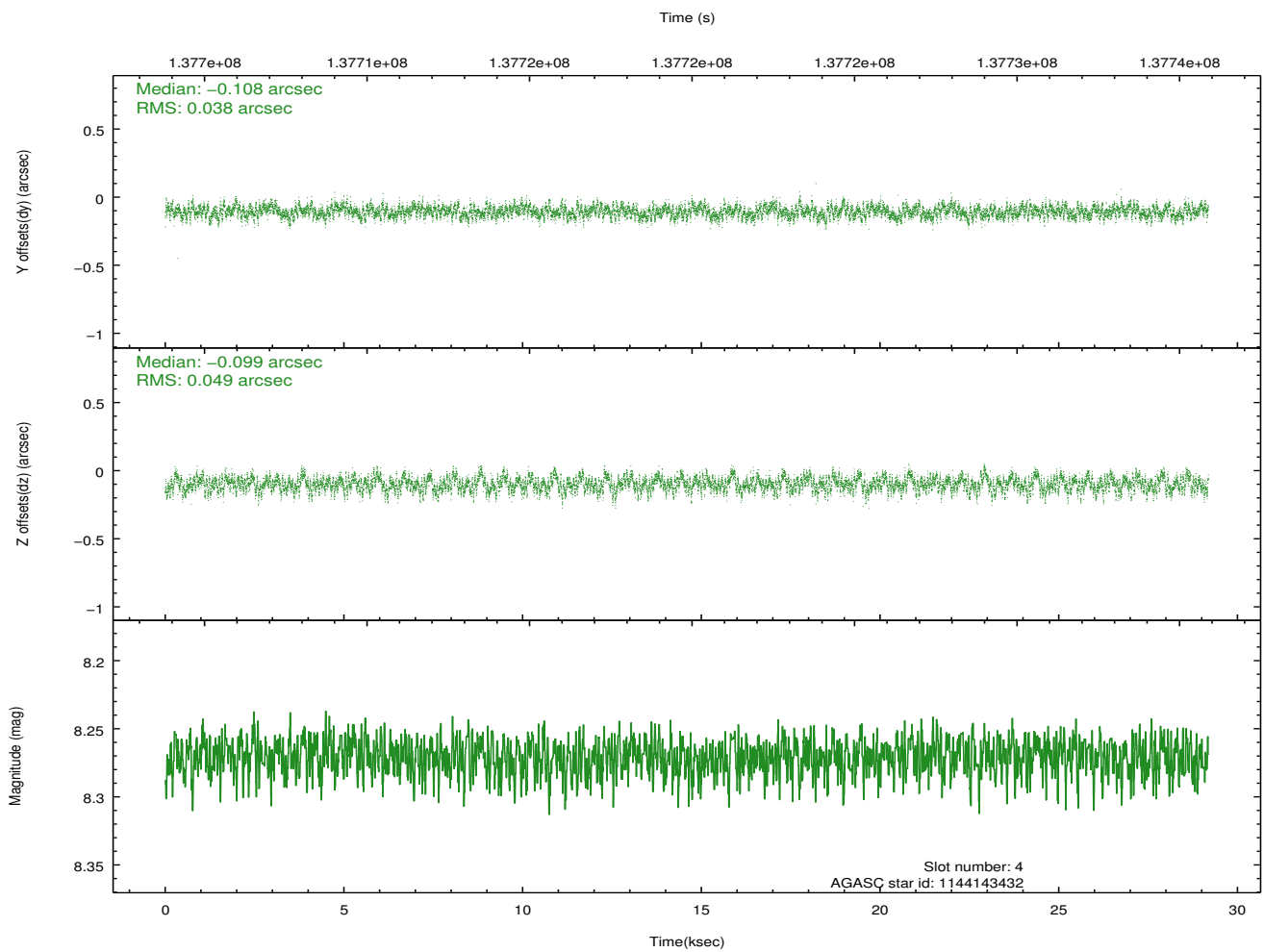
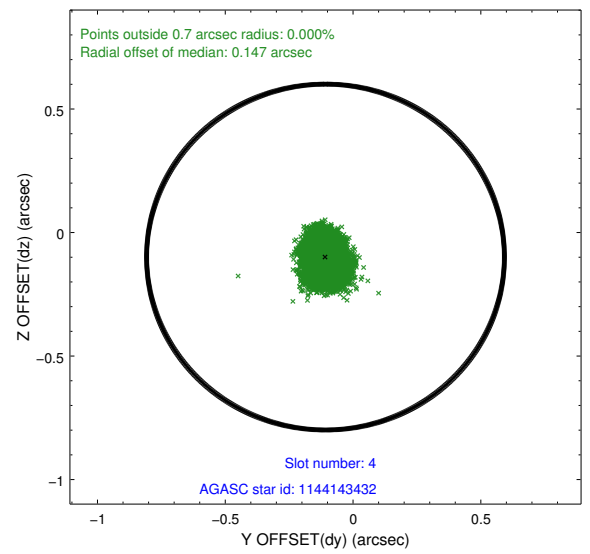
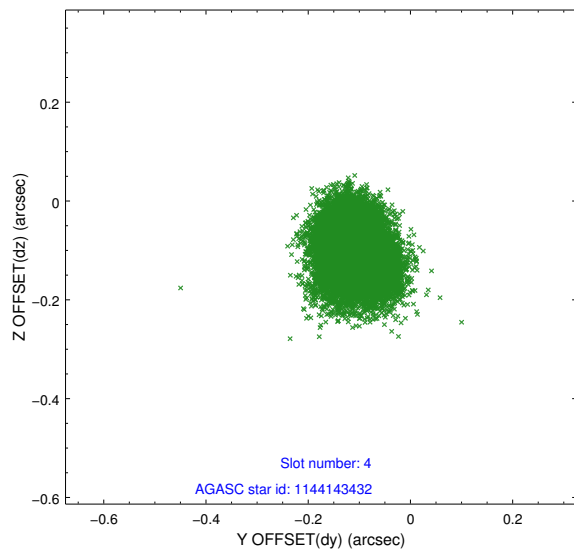
slot	status	id	mag	n_pts	med_dy	med_dz	dr1	dr2	ra	dec	mean_y	mean_z
0	FID	ACIS-S-2	7.11	7119	-0.053	0.001	0.008	0.013	0.000000	0.000000	-754.40	-1727.07
1	FID	ACIS-S-4	7.21	7119	-0.006	0.025	0.006	0.011	0.000000	0.000000	2158.84	181.43
2	FID	ACIS-S-5	7.24	7119	0.028	-0.017	0.008	0.013	0.000000	0.000000	-1807.11	175.06
3	GUIDE	1144131688	6.77	14237	0.095	0.056	0.044	0.071	264.942474	-54.356438	-2183.84	-1119.22
4	GUIDE	1144143432	8.27	14233	-0.108	-0.099	0.066	0.107	264.820407	-53.209617	838.77	1704.33
5	GUIDE	1144660608	8.32	14238	0.084	0.060	0.055	0.089	265.130202	-54.477870	-2272.77	-1700.37
6	GUIDE	1144141280	9.04	14234	-0.043	0.044	0.075	0.122	266.126585	-53.720949	1168.45	-1629.53
7	GUIDE	1144130096	8.95	14228	-0.029	-0.059	0.070	0.114	265.098929	-52.802658	2354.42	2167.78

## 2.4 Star Slots

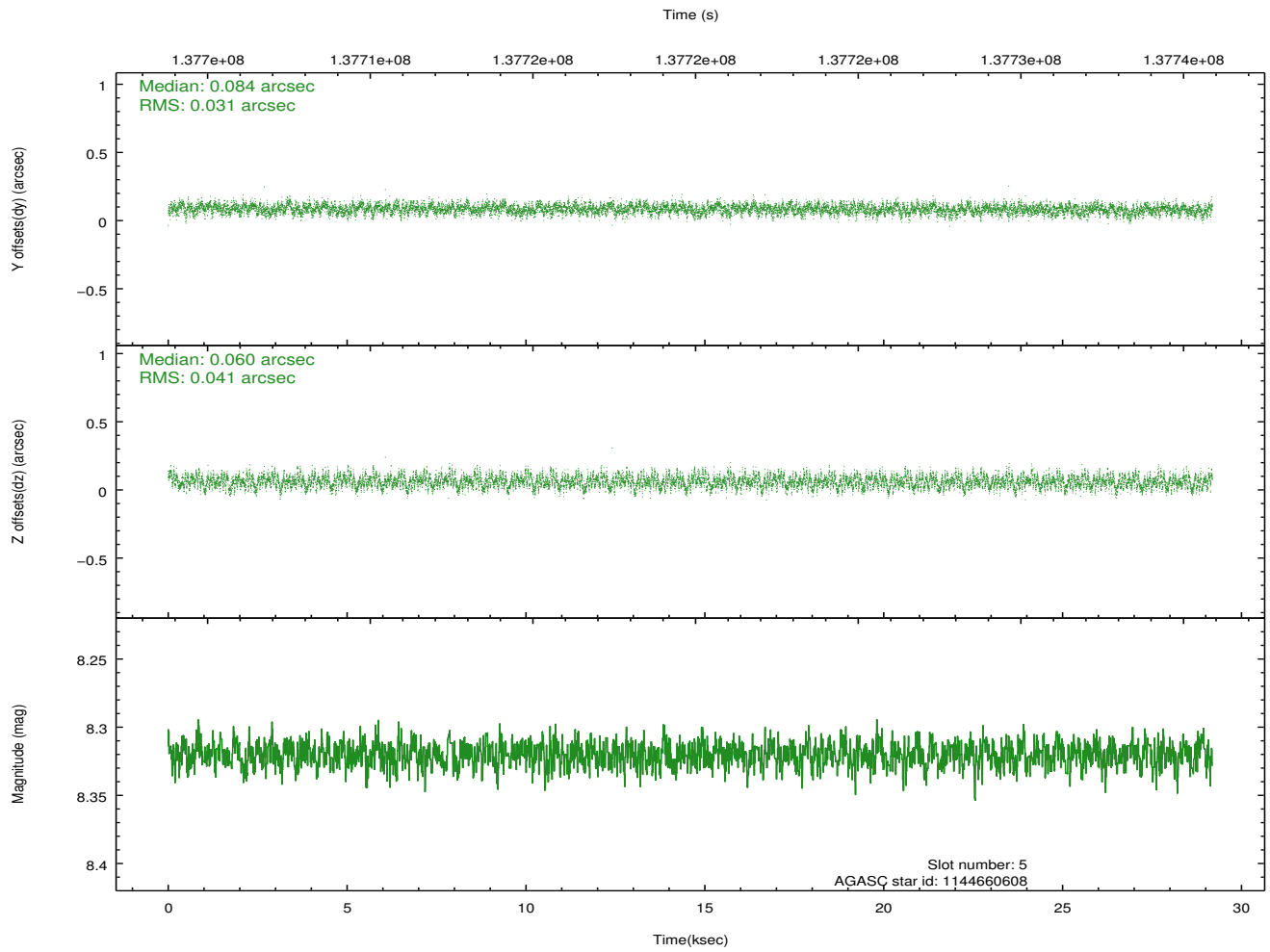
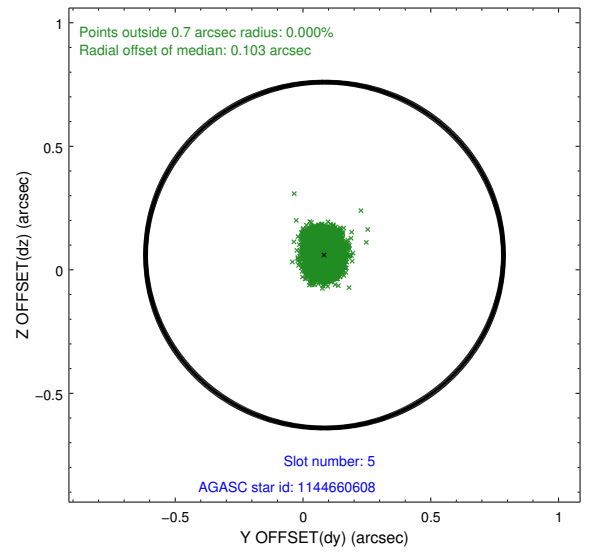
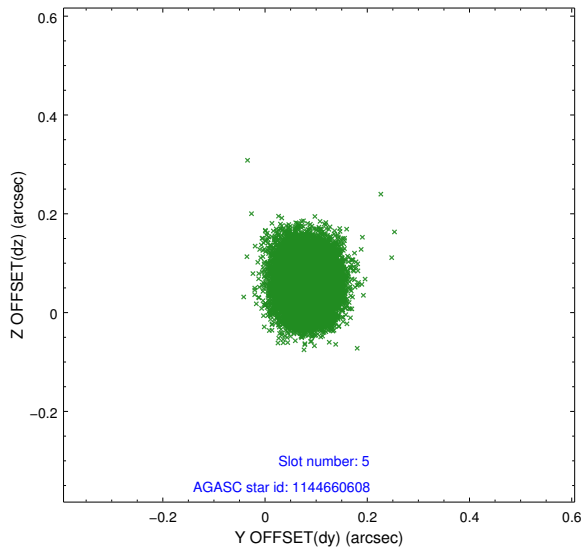
### 2.4.1 Slot 3



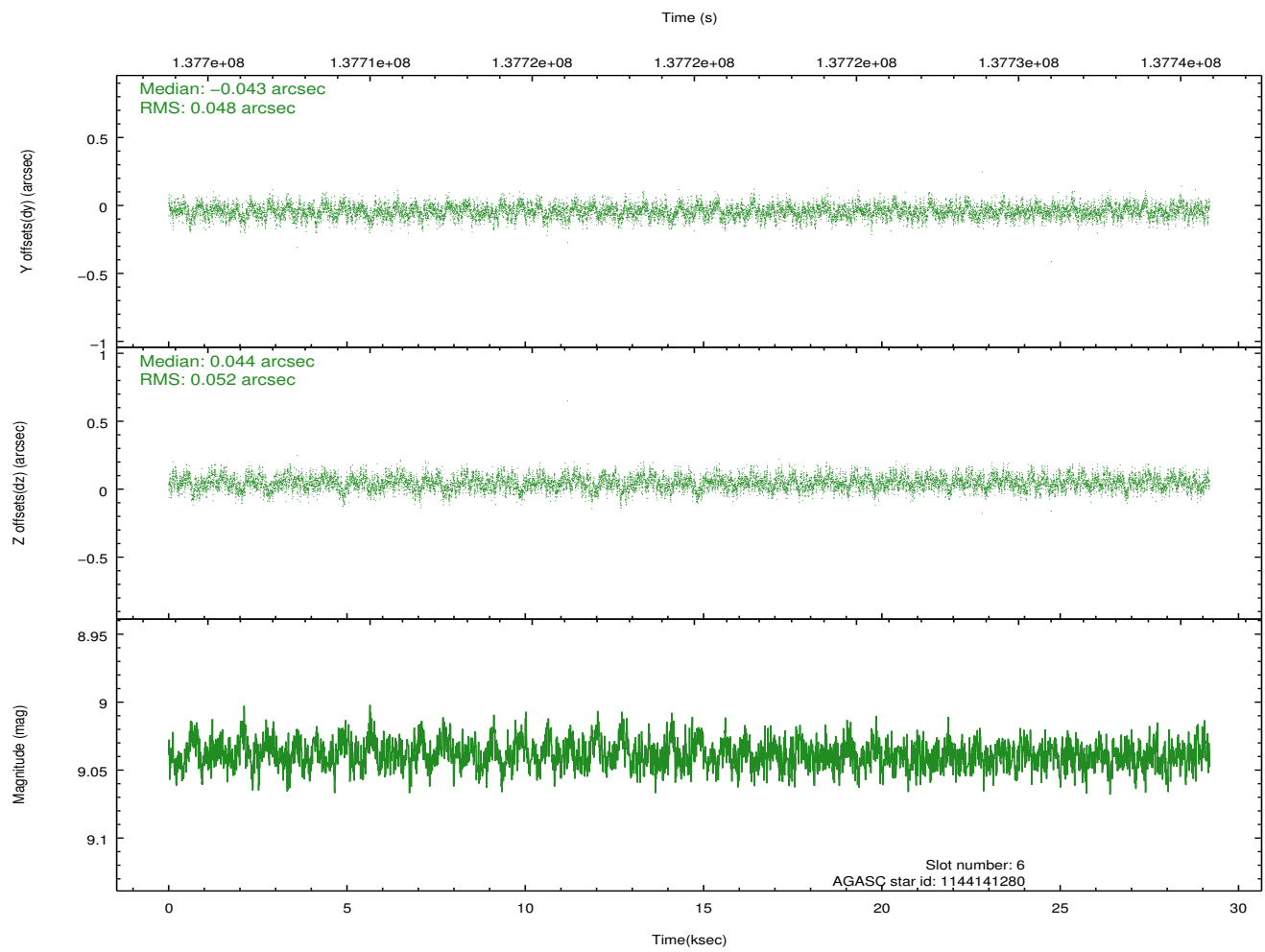
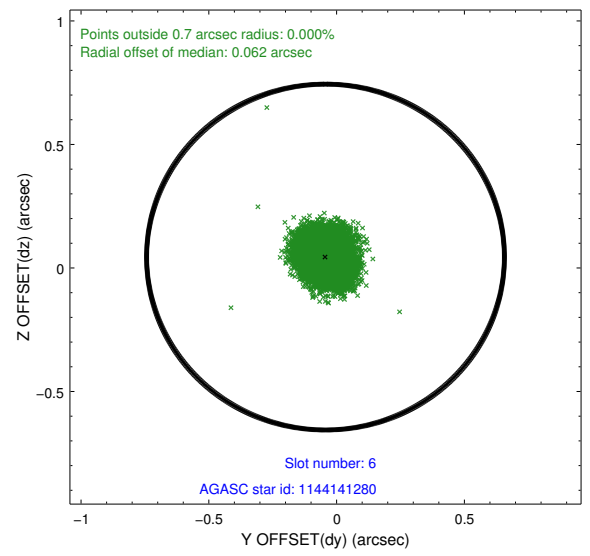
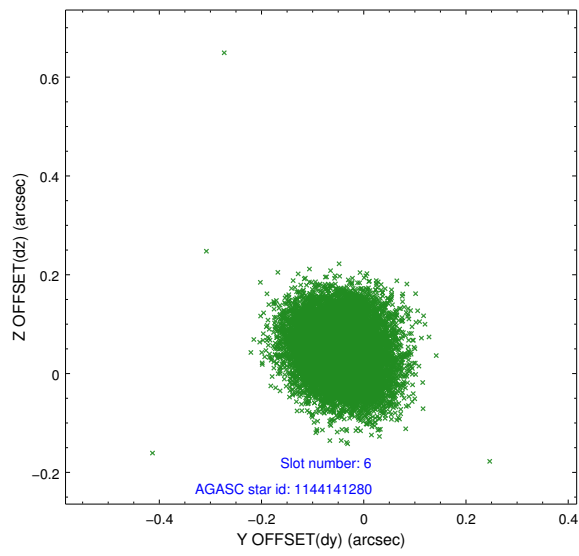
## 2.4.2 Slot 4



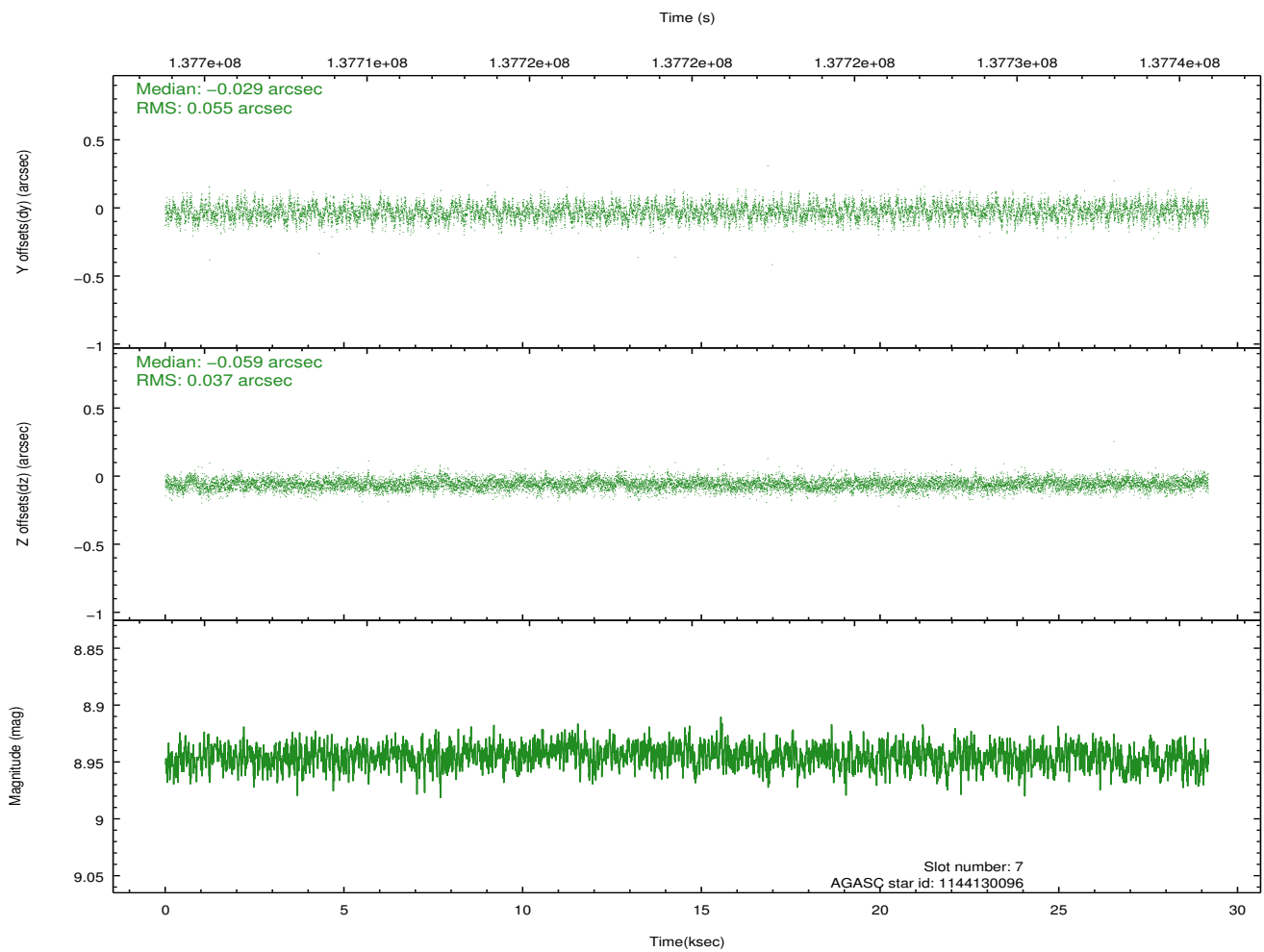
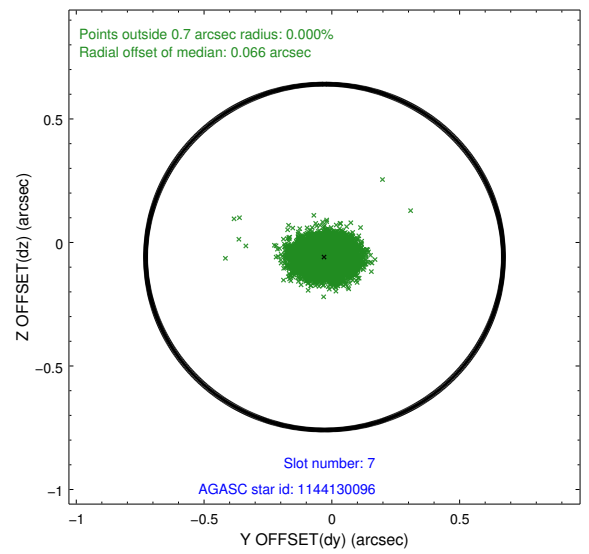
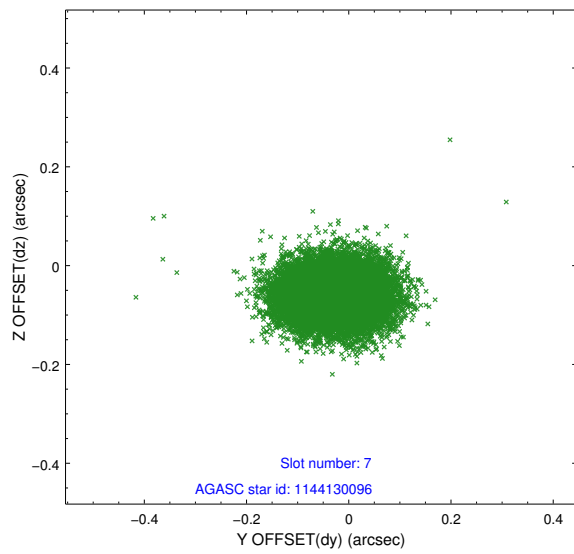
### 2.4.3 Slot 5



## 2.4.4 Slot 6

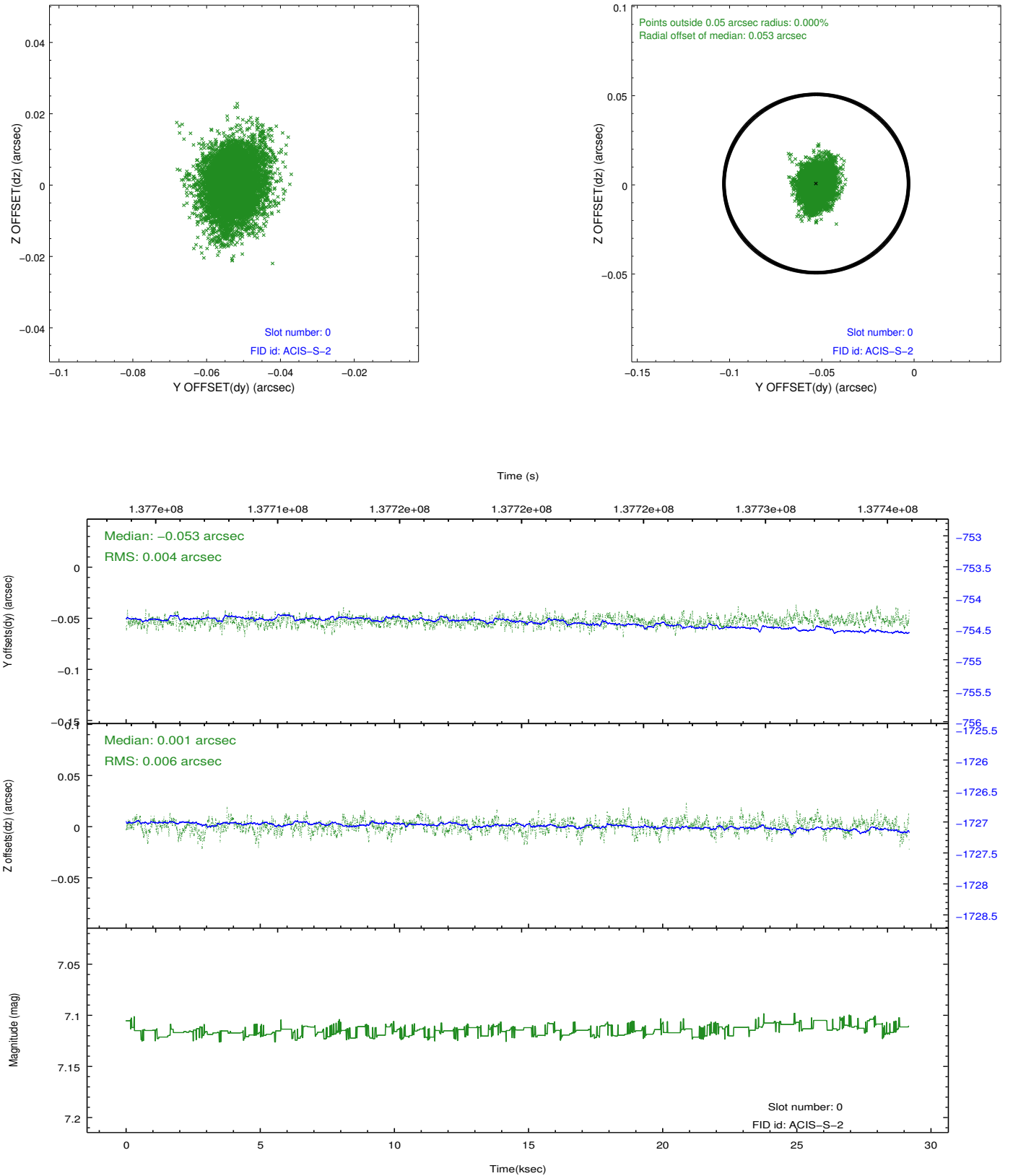


## 2.4.5 Slot 7

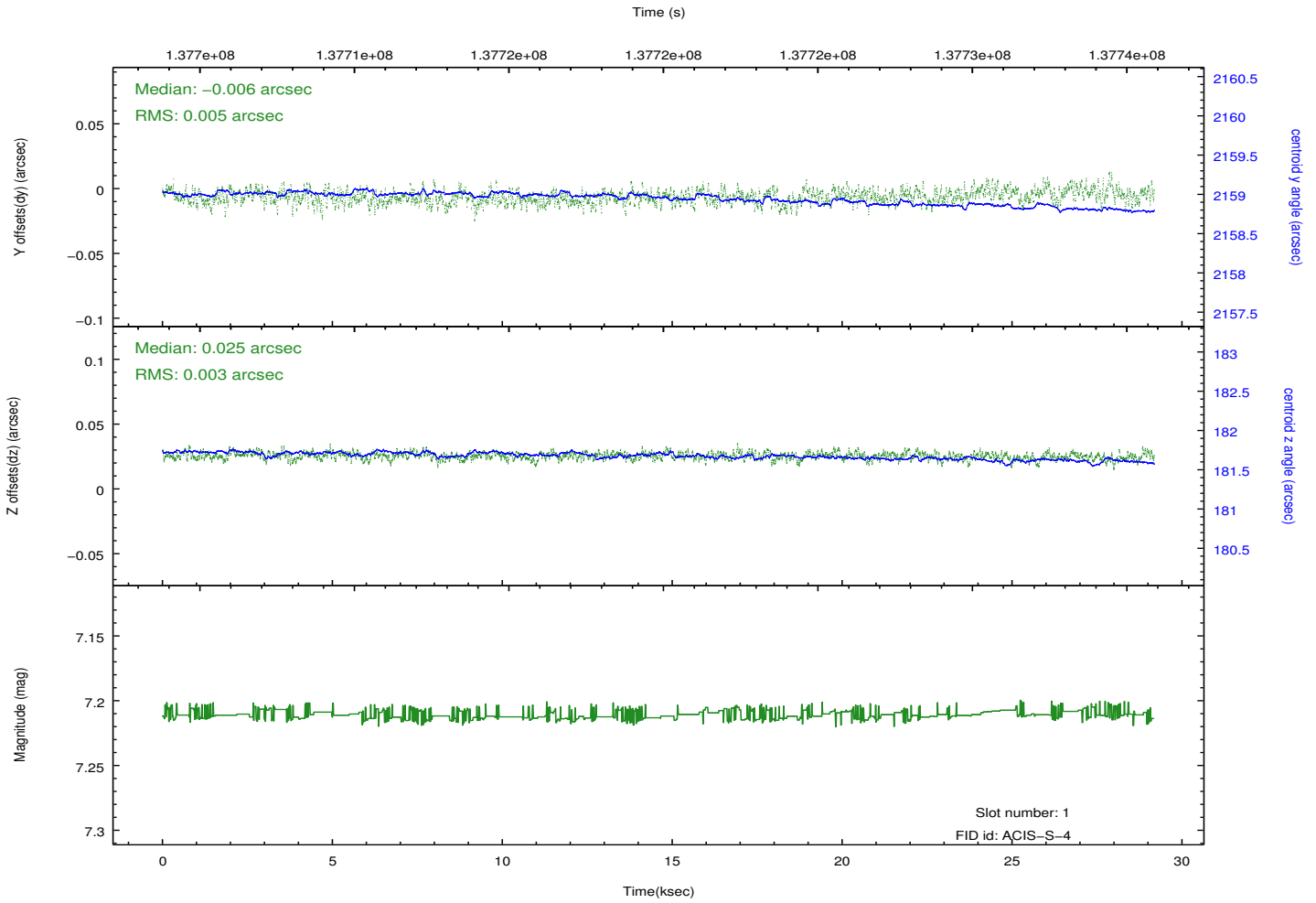
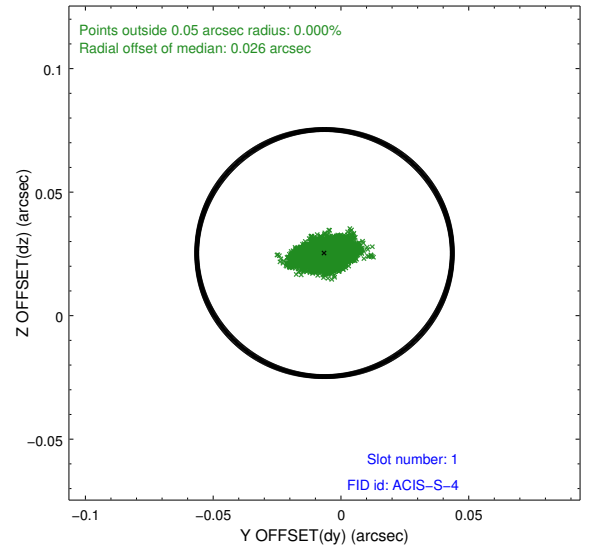
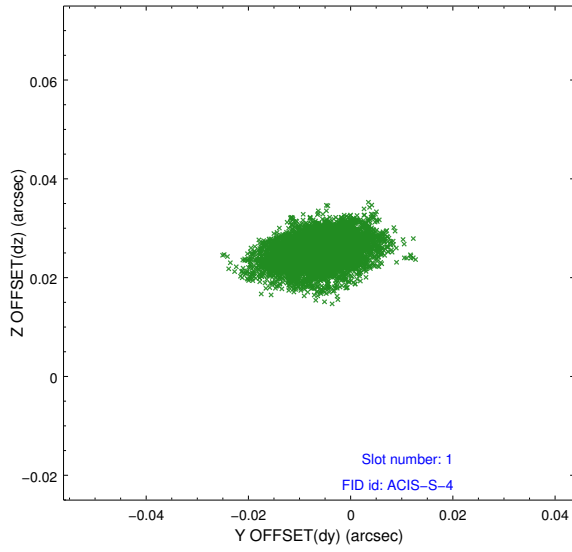


## 2.5 FID Slots

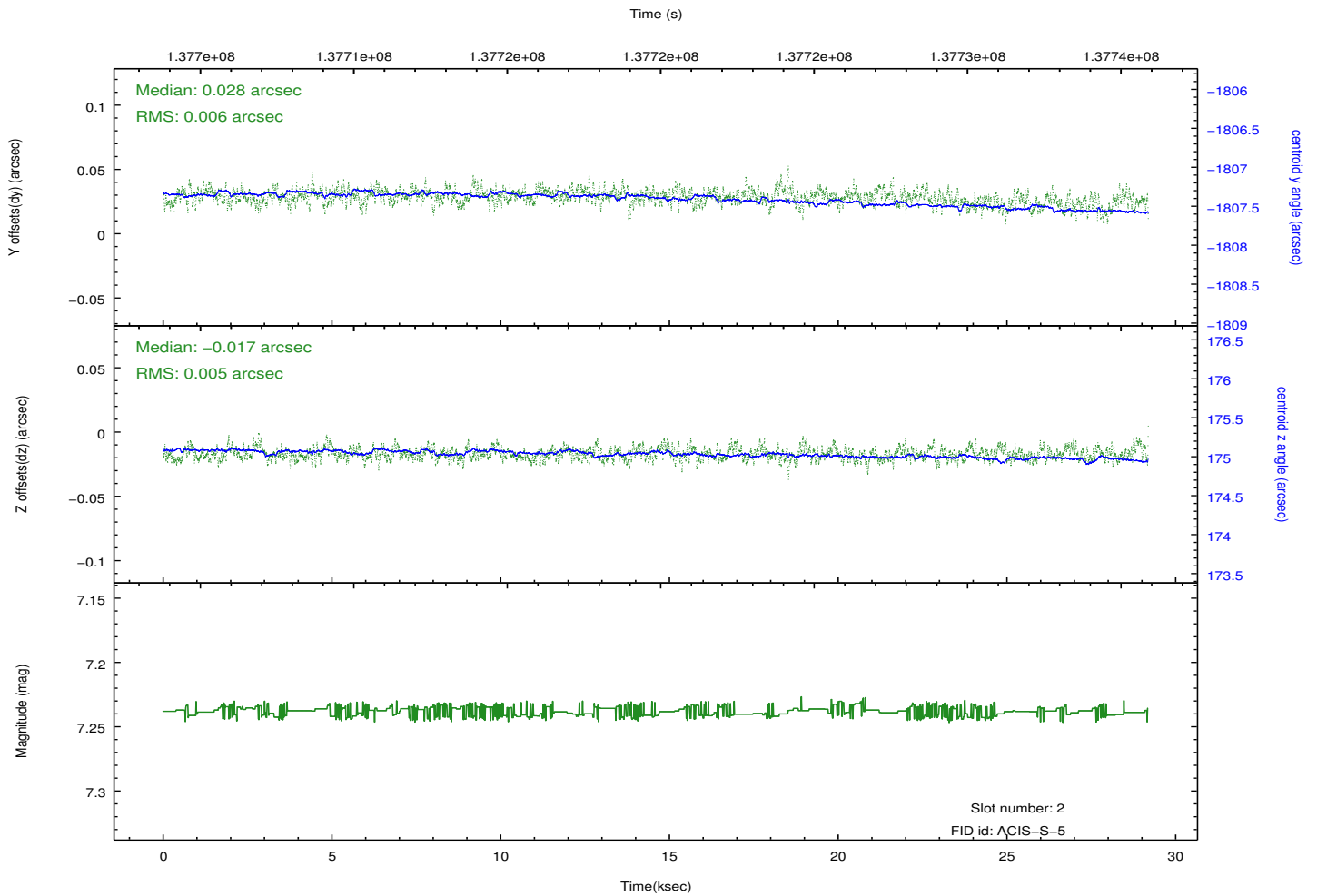
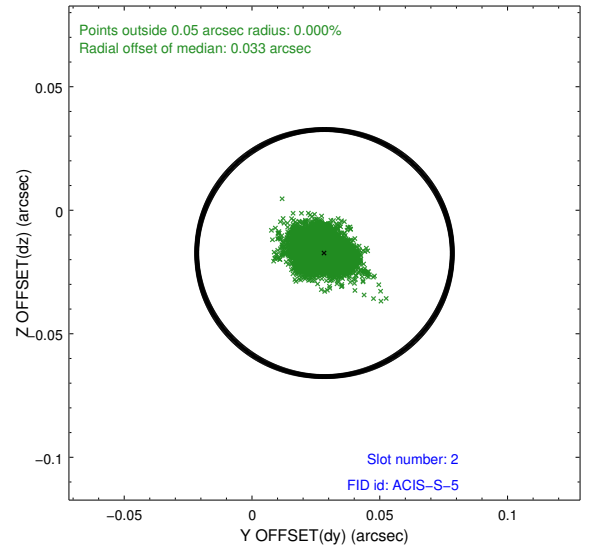
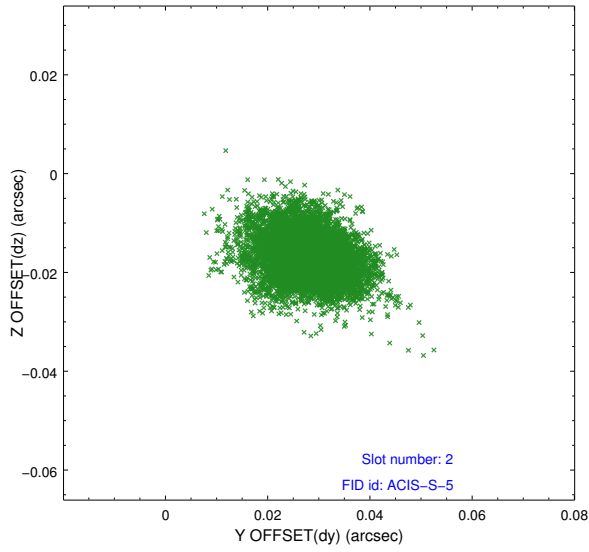
### 2.5.1 Slot 0



## 2.5.2 Slot 1



### 2.5.3 Slot 2



# A Summary

## A.1 Status

V&V Scientist	Beth Sundheim
V&V Date (YYYY-MM-DD)	2012.10.17
V&V Edition	1
V&V Disposition and Status	OK
V&V Charge Time	28.463

## A.2 Comments