

V&V Reference Report

L2 ASCDS Version : 8.4.5

Observation 2678 - L2 Version 3
Chandra X-Ray Center

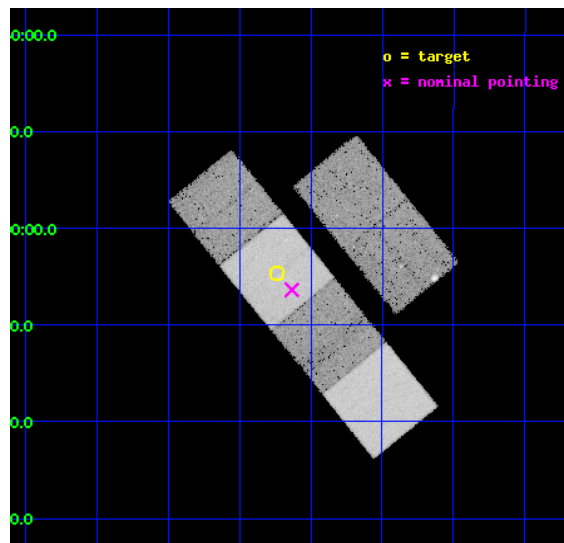
L2 Processing Date : Oct 10 2012

Contents

1	Front	2
2	OBI	3
2.1	OBI	3
2.1.1	Images	3
2.1.2	Bias	3
2.1.3	Parameters	4
2.1.4	Events	4
2.2	Compared Parameters	5
2.3	Aspect	6
2.4	Star Slots	9
2.4.1	Slot 3	9
2.4.2	Slot 4	10
2.4.3	Slot 5	11
2.4.4	Slot 6	12
2.4.5	Slot 7	13
2.5	FID Slots	14
2.5.1	Slot 0	14
2.5.2	Slot 1	15
2.5.3	Slot 2	16
A	Summary	17
A.1	Status	17
A.2	Comments	17

1 Front

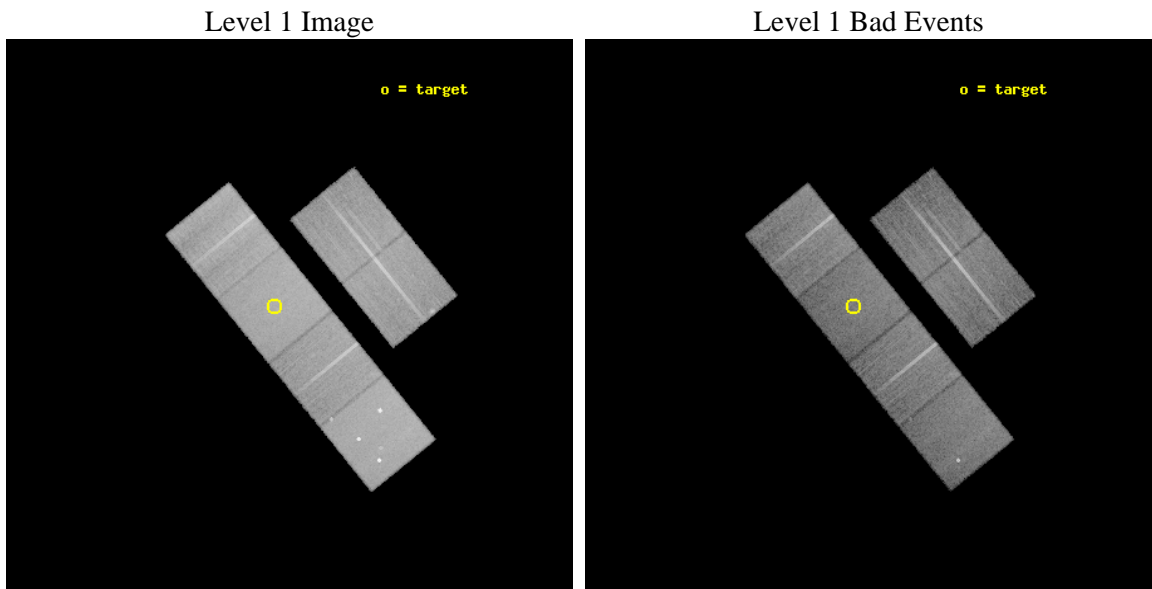
seq_num	300079	Sequence number
obs_id	2678	Observation id
title	A UNIFORM STUDY OF GLOBULAR CLUSTER X--RAY SOURCES: THE KEYS TO CLUSTER DYNAMICAL EVOLUTION	Proposal title
observer	Prof. Walter Lewin	Principal investigator
object	NGC 6366	Source name
dtcycle	0	
cycle	P	events from which exps? Prim/Second/Both
ra_targ	261.934583	Observer's specified target RA [deg]
dec_targ	-5.076639	Observer's specified target Dec [deg]
ra_nom	261.90814218791	Nominal RA [deg]
dec_nom	-5.1061927327099	Nominal Dec [deg]
roll_nom	230.87802175172	Nominal Roll [deg]
revision	3	Processing version of data
ontime	22258.32636857	Sum of GTIs [s]
livetime	21976.478037736	Livetime [s]
ontime2	22258.367408574	Sum of GTIs [s]
ontime3	22258.20324856	Sum of GTIs [s]
ontime5	22258.285328567	Sum of GTIs [s]
ontime6	22258.244288564	Sum of GTIs [s]
ontime7	22258.32636857	Sum of GTIs [s]
ontime8	22254.921138644	Sum of GTIs [s]
l2events	248459	Number of level 2 events



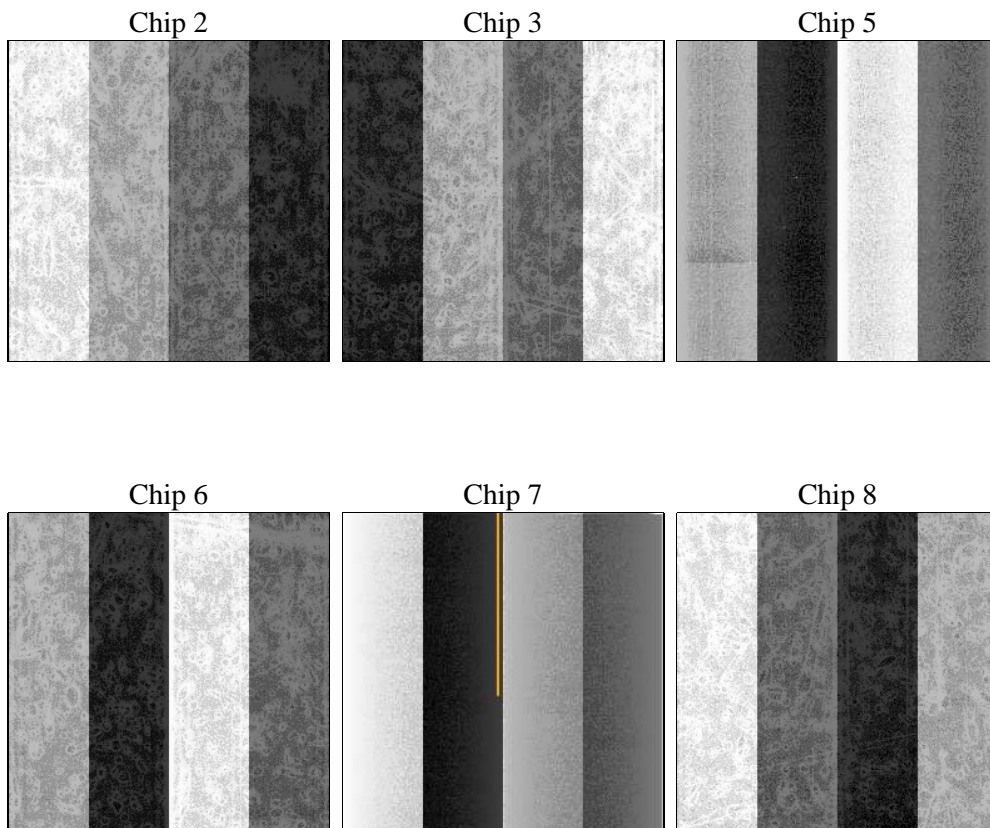
2 OBI

2.1 OBI

2.1.1 Images



2.1.2 Bias



2.1.3 Parameters

obi_num	0	Obi number	sched_exp_time	22500.000000	[s] Scheduled observation exposure time
ascdsver	8.4.5	Processing system revision	ontime	22258.32636857	Sum of GTIs [s]
caldbver	4.5.2	 	ontime2	22258.367408574	Sum of GTIs [s]
date	2012-10-10T05:07:35	Date and time of file creation	ontime3	22258.20324856	Sum of GTIs [s]
revision	3	Processing version of data	ontime5	22258.285328567	Sum of GTIs [s]
			ontime6	22258.244288564	Sum of GTIs [s]
			ontime7	22258.32636857	Sum of GTIs [s]
			ontime8	22254.921138644	Sum of GTIs [s]
			l1events	1093381	Number of level 1 events

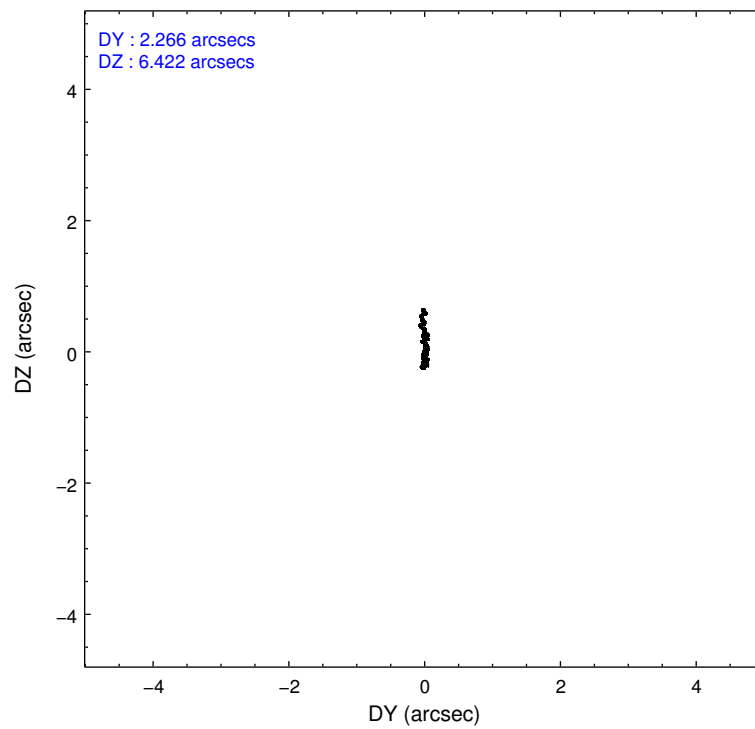
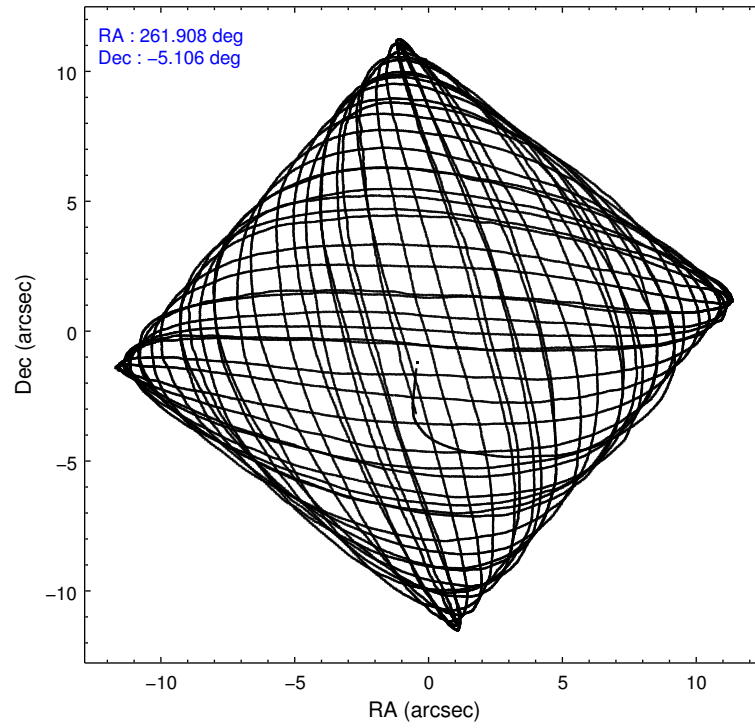
2.1.4 Events

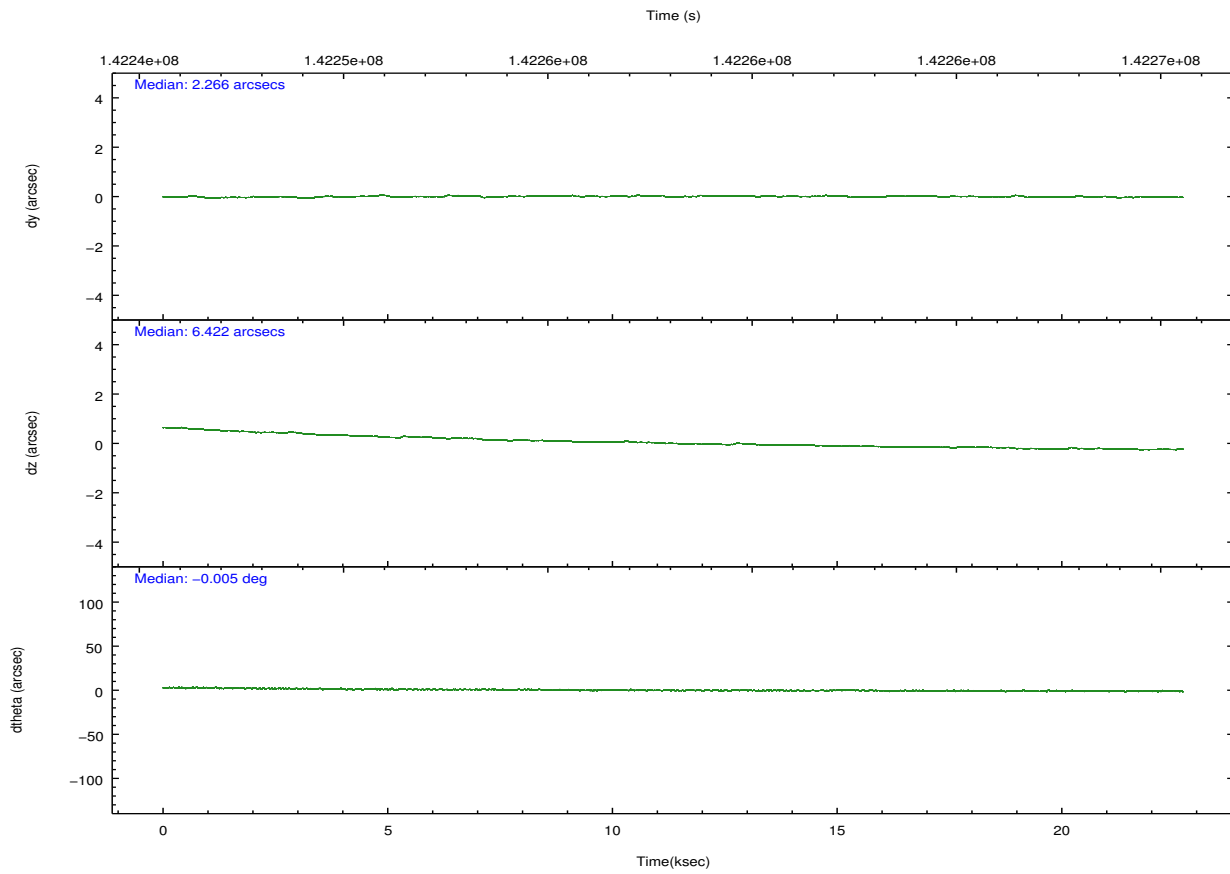
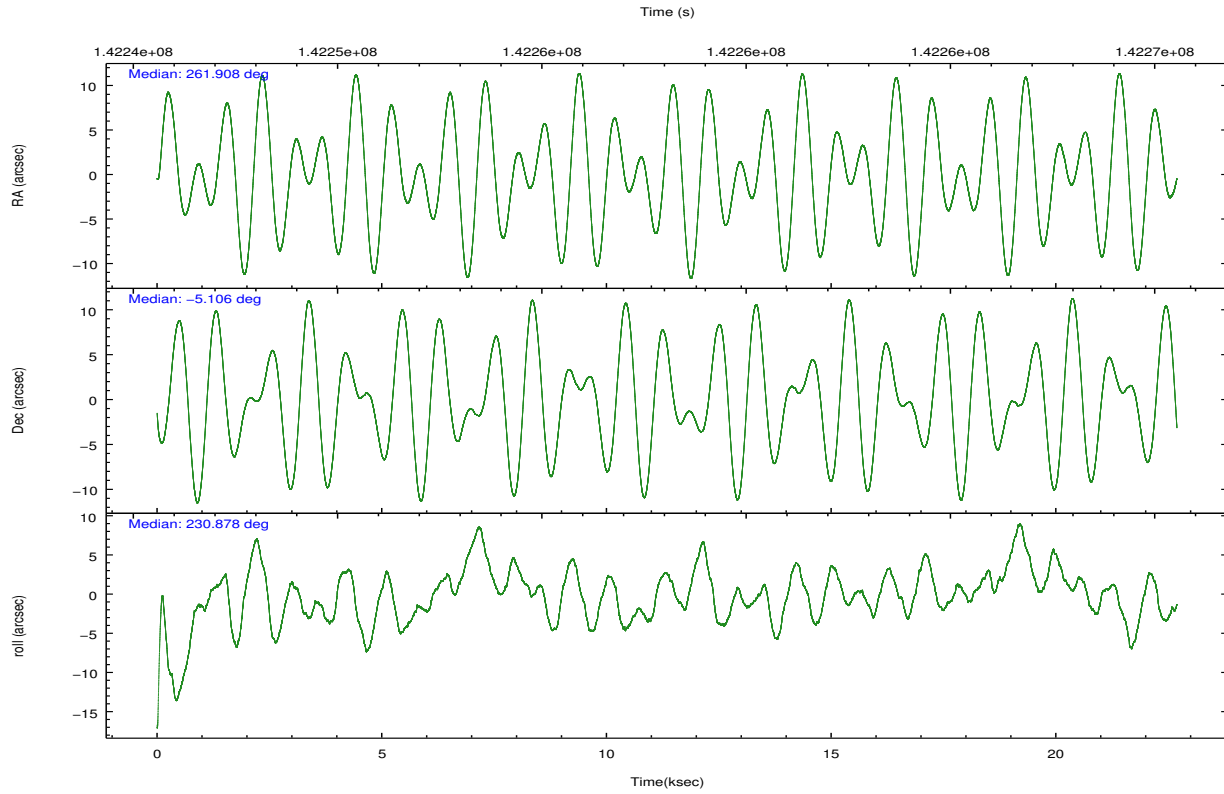
	ccd 2	ccd 3	ccd 5	ccd 6	ccd 7	ccd 8		ccd 2	ccd 3	ccd 5	ccd 6	ccd 7	ccd 8
level 1 events	159896	151928	226518	155308	197922	201809	grade 0 events	9623	8302	15402	8537	8187	16298
rejected events	138751	132588	119039	134943	113733	154289		6%	5%	6%	5%	4%	8%
rejected %	86%	87%	52%	86%	57%	76%	grade 1 events	83	77	287	87	189	154
								0%	0%	0%	0%	0%	0%
							grade 2 events	4575	4150	31507	4410	16737	9380
								2%	2%	13%	2%	8%	4%
							grade 3 events	1709	1644	4445	1824	7545	5740
								1%	1%	1%	1%	3%	2%
							grade 4 events	1770	1744	4218	1772	7567	5304
								1%	1%	1%	1%	3%	2%
							grade 5 events	5455	5883	16790	6499	18836	8295
								3%	3%	7%	4%	9%	4%
							grade 6 events	3471	3503	51920	3825	44167	10800
								2%	2%	22%	2%	22%	5%
							grade 7 events	133210	126625	101949	128354	94694	145838
								83%	83%	45%	82%	47%	72%

2.2 Compared Parameters

Parameter	Planned	Actual	Parameter	Planned	Actual
Instrument	ACIS	ACIS	Obspar format version number	7	7
Detector	ACIS-235678	ACIS-235678	Obspar file type	PREDICTED	ACTUAL
Grating	NONE	NONE	Obspar update status	NONE	UPDATED
Data mode	FAINT	FAINT	Number of optional ACIS chips dropped	0	0
Observation mode	POINTING	POINTING	On-chip summing requested	N	N
[deg] Pointing RA	261.912117	261.9081421879113	Subarray requested	NONE	NONE
[deg] Pointing Dec	-5.079260	-5.106192732709882	Alternating exposures requested	N	N
[deg] Pointing Roll	230.721757	230.8780217517199	[s] Primary exposure time	0.000000	3.2
[mm] SIM focus pos	-0.684267	-0.6828225247311905			
[mm] SIM defocus	0	0.001444936568705701			
[mm] SIM translation stage pos	-190.132523	-190.1425803651734			
[mm] SIM translation stage offset	0	0.01005778216563158			
[s] Observation start time (MET)	142246915.184000	142246201.07445			
Observation start date	2002-07-05T09:00:51	2002-07-05T08:50:01			
[s] Observation end time (MET)	142269415.184000	142270188.12543			
Observation end date	2002-07-05T15:15:51	2002-07-05T15:29:48			
Read mode	TIMED	TIMED			

2.3 Aspect



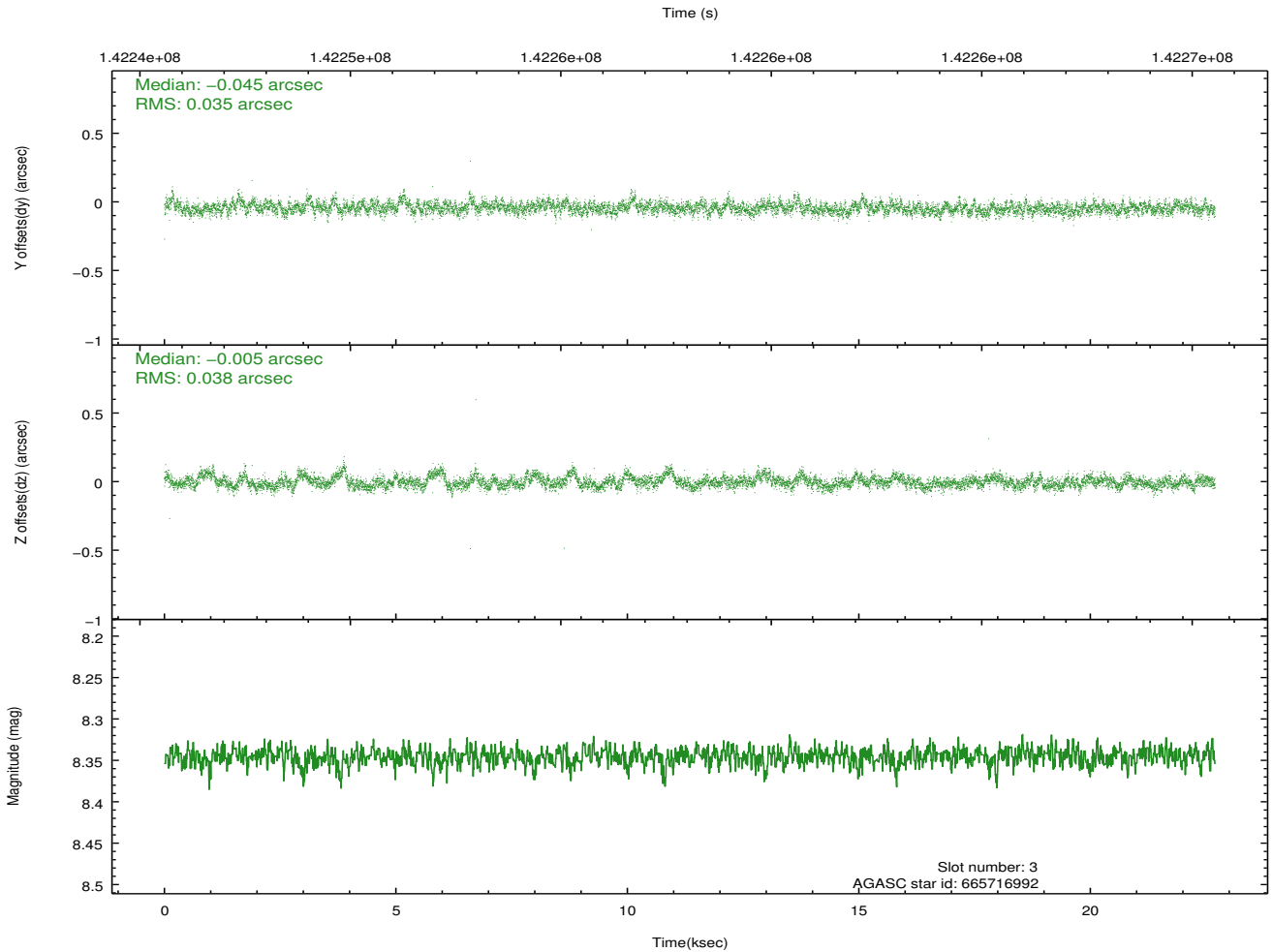
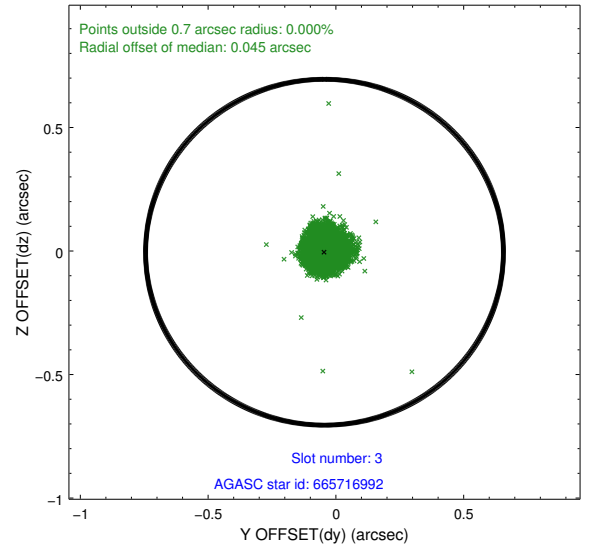
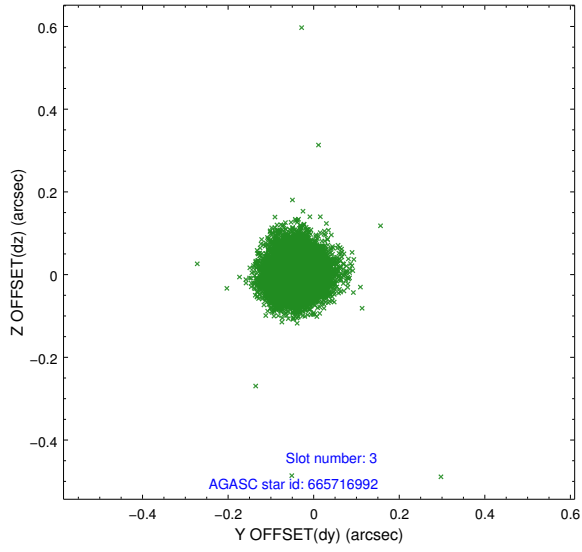


Slot Statistics

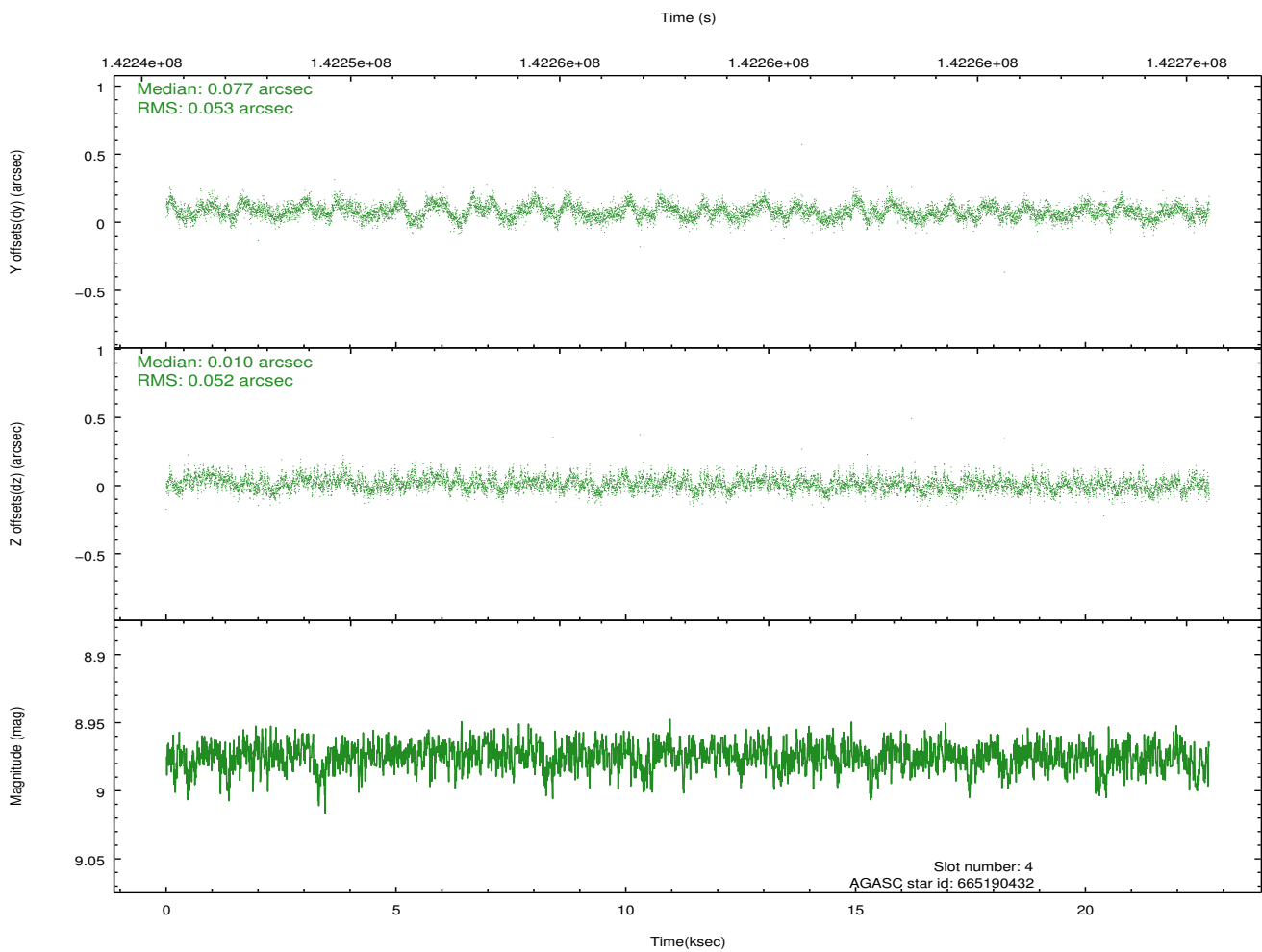
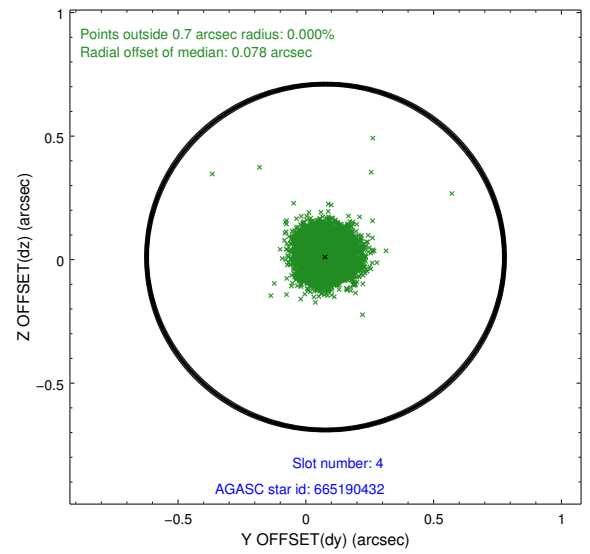
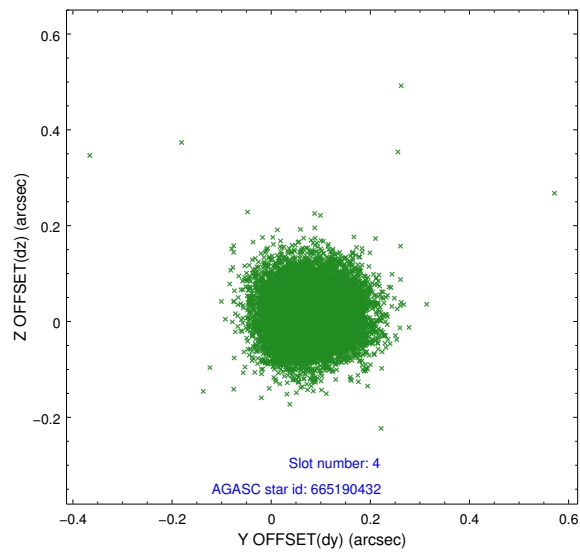
slot	status	id	mag	n_pts	med_dy	med_dz	dr1	dr2	ra	dec	mean_y	mean_z
0	FID	ACIS-S-2	7.12	5535	-0.046	-0.003	0.008	0.017	0.000000	0.000000	-754.90	-1727.60
1	FID	ACIS-S-4	7.20	5533	-0.002	0.023	0.007	0.013	0.000000	0.000000	2158.32	180.81
2	FID	ACIS-S-5	7.24	5532	0.017	-0.011	0.008	0.014	0.000000	0.000000	-1807.53	174.54
3	GUIDE	665716992	8.35	11065	-0.045	-0.005	0.054	0.088	261.849486	-5.734823	1969.07	1321.17
4	GUIDE	665190432	8.97	11060	0.077	0.010	0.079	0.126	262.499326	-4.802604	-2103.42	1001.48
5	GUIDE	665716840	8.75	11065	0.033	0.019	0.079	0.125	262.177923	-5.639109	957.46	2013.99
6	GUIDE	665195048	9.59	11059	0.070	0.067	0.102	0.164	261.528931	-5.419910	1819.55	-285.55
7	GUIDE	665192320	10.03	11001	-0.127	-0.081	0.145	0.291	261.888187	-4.323966	-2050.06	-1787.46

2.4 Star Slots

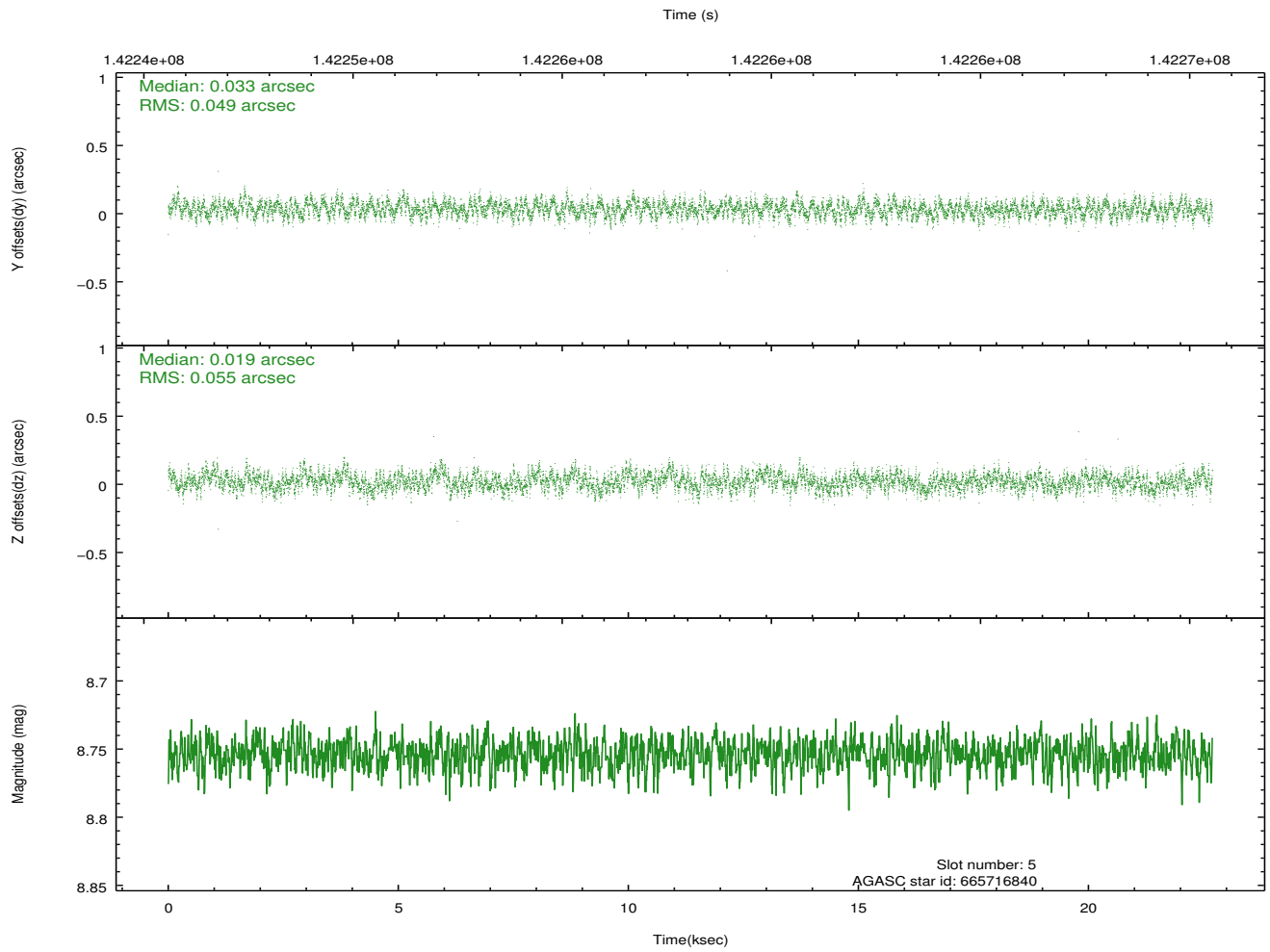
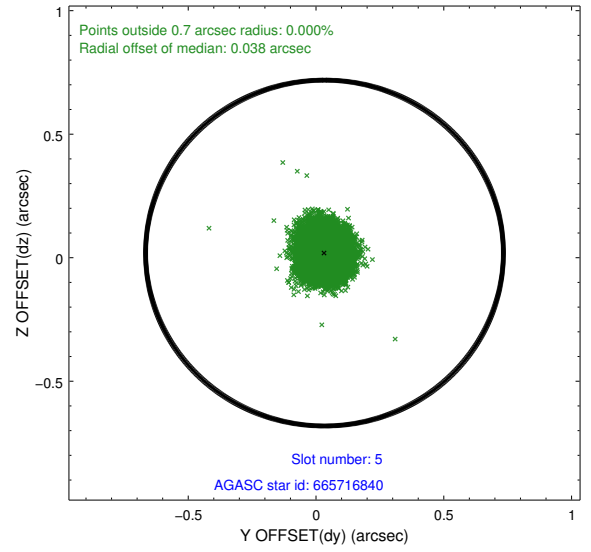
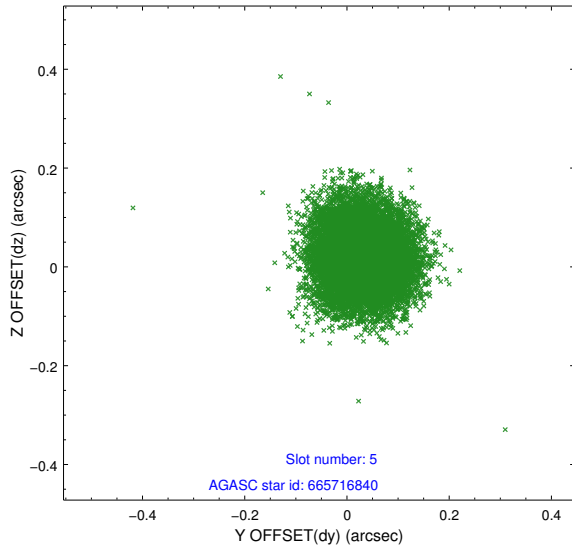
2.4.1 Slot 3



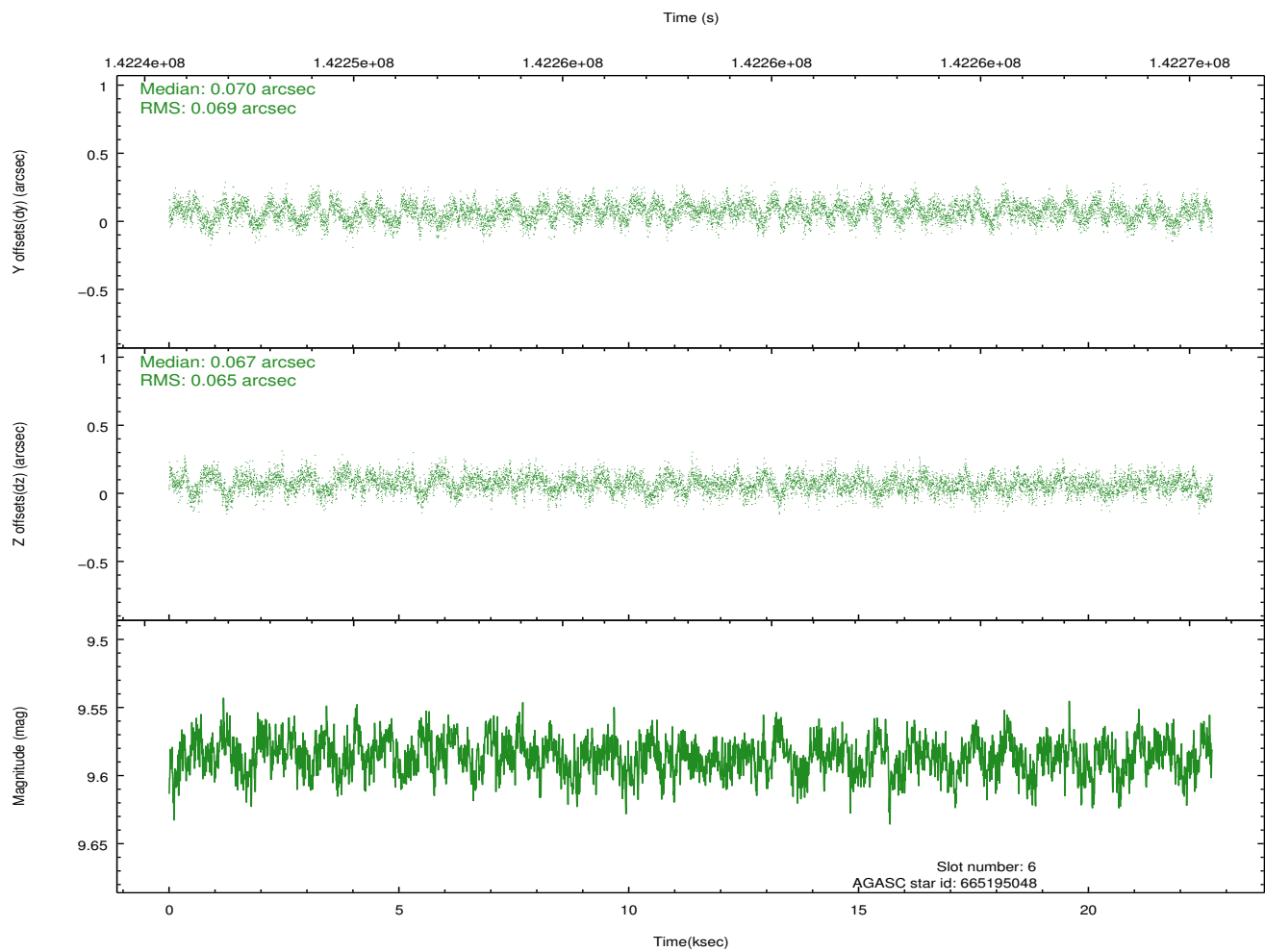
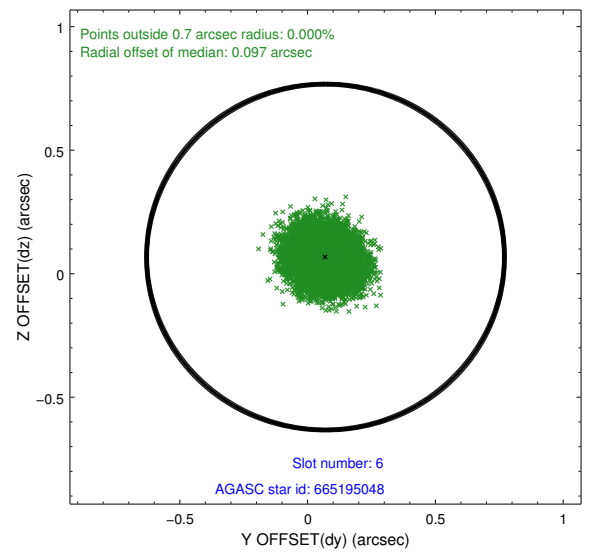
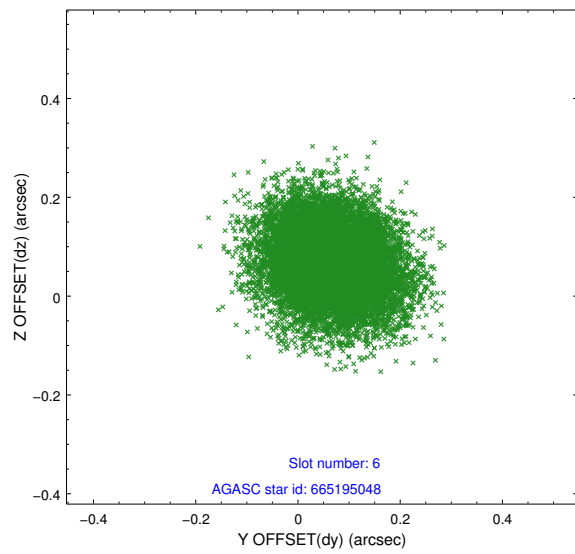
2.4.2 Slot 4



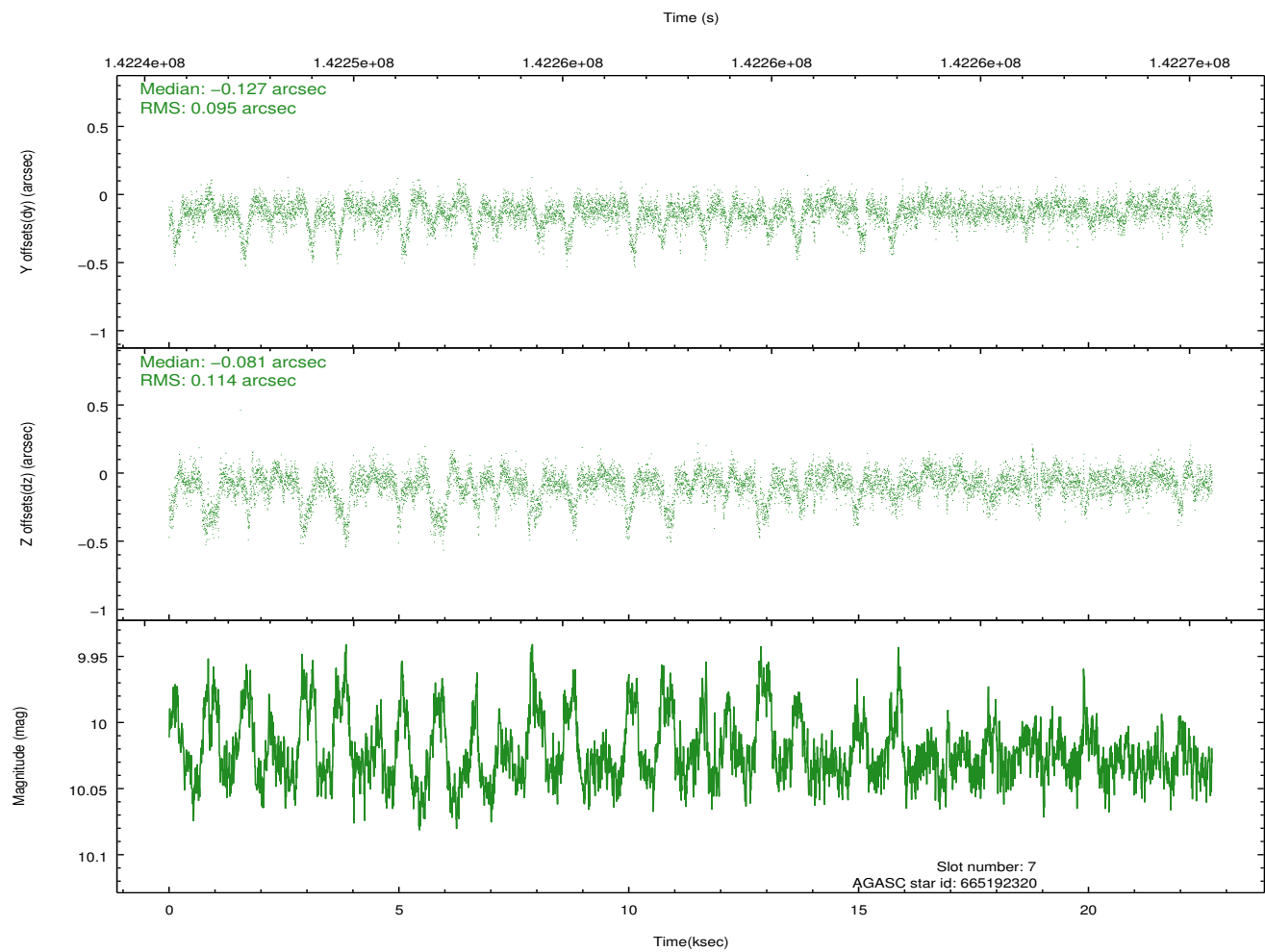
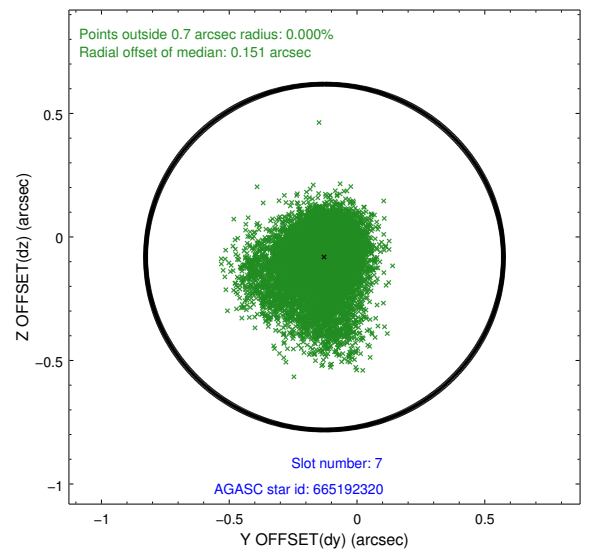
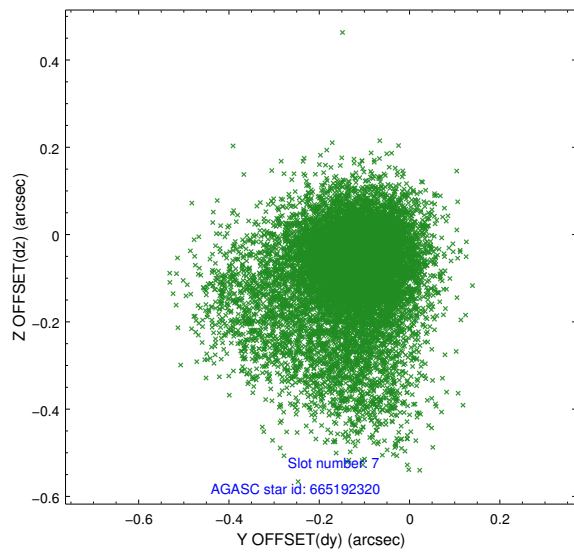
2.4.3 Slot 5



2.4.4 Slot 6

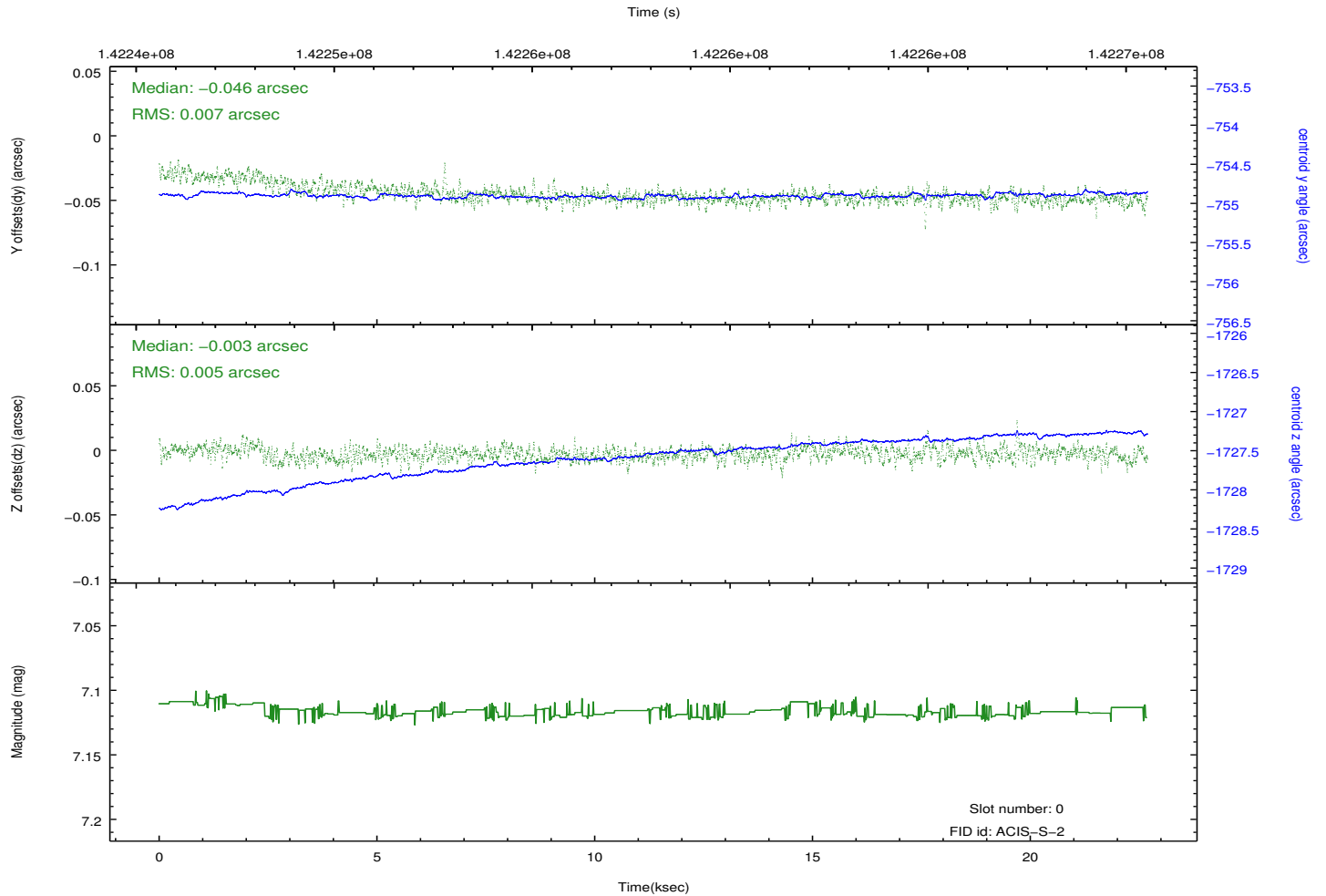
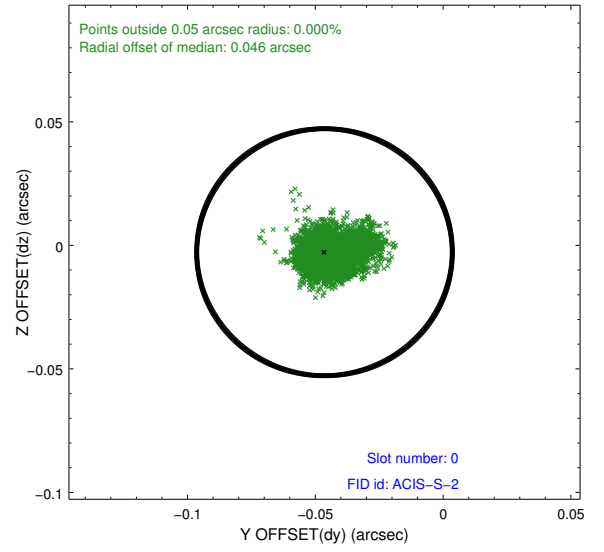
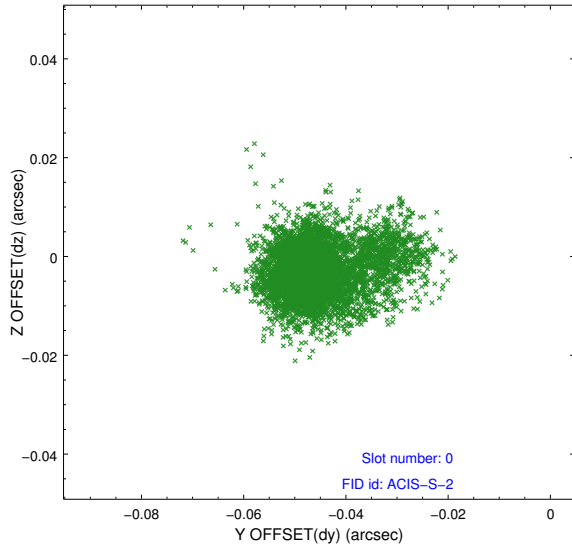


2.4.5 Slot 7

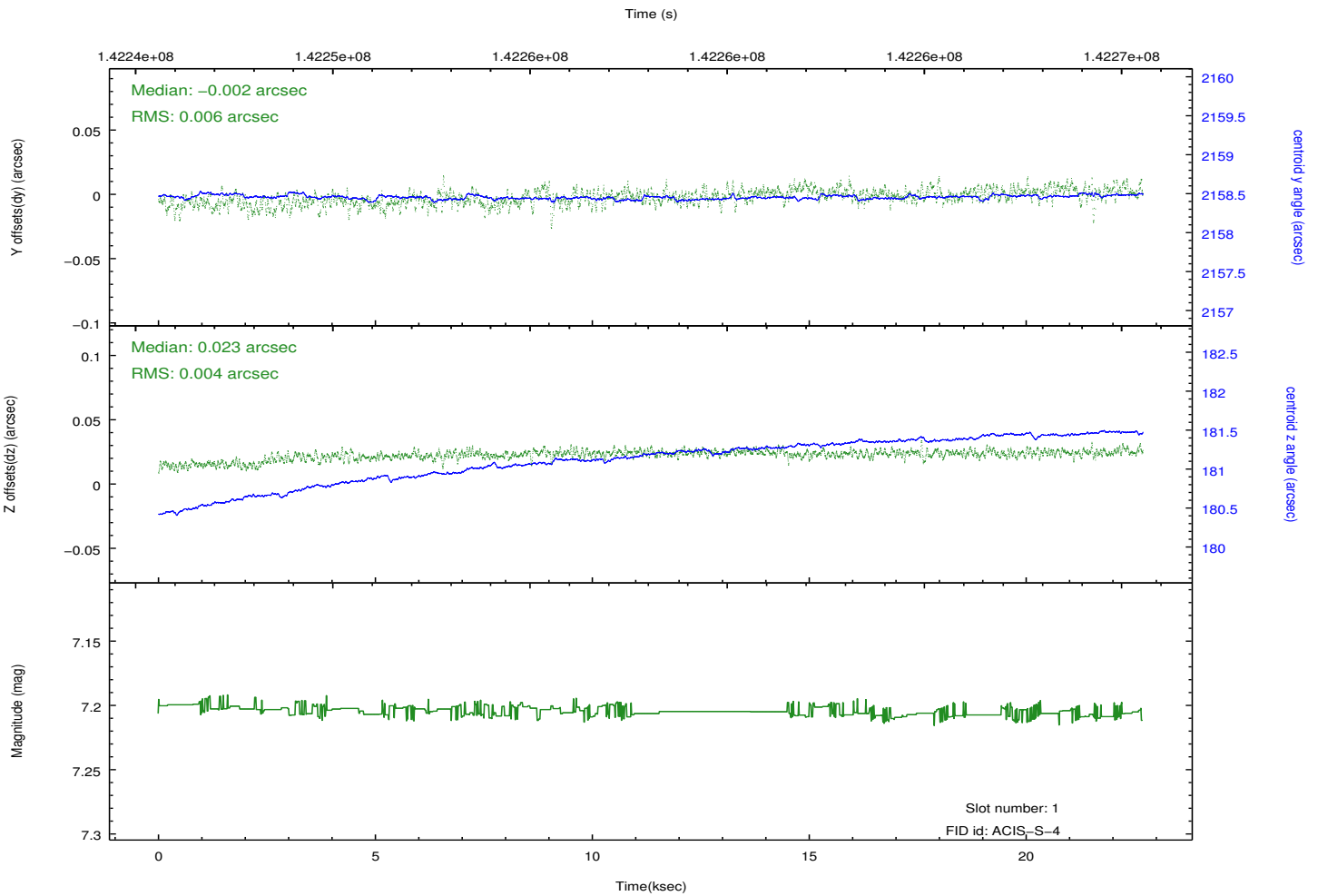
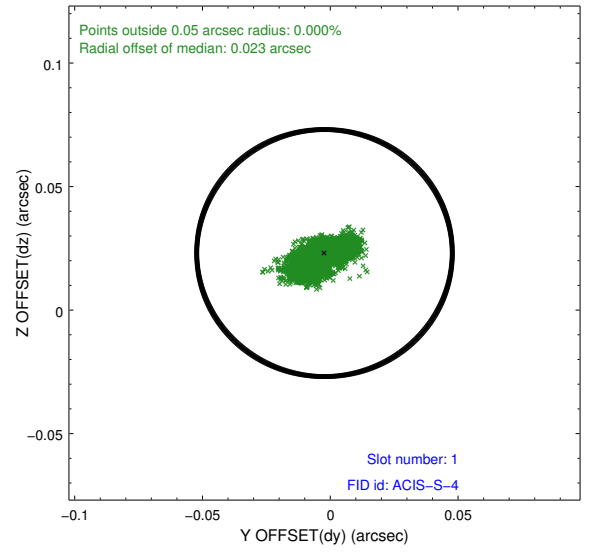
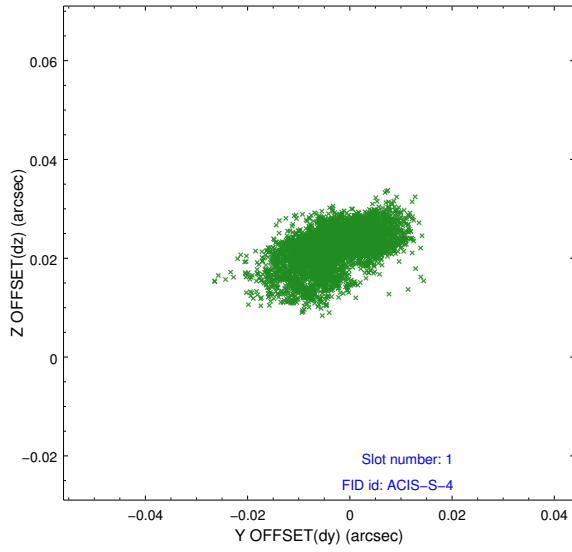


2.5 FID Slots

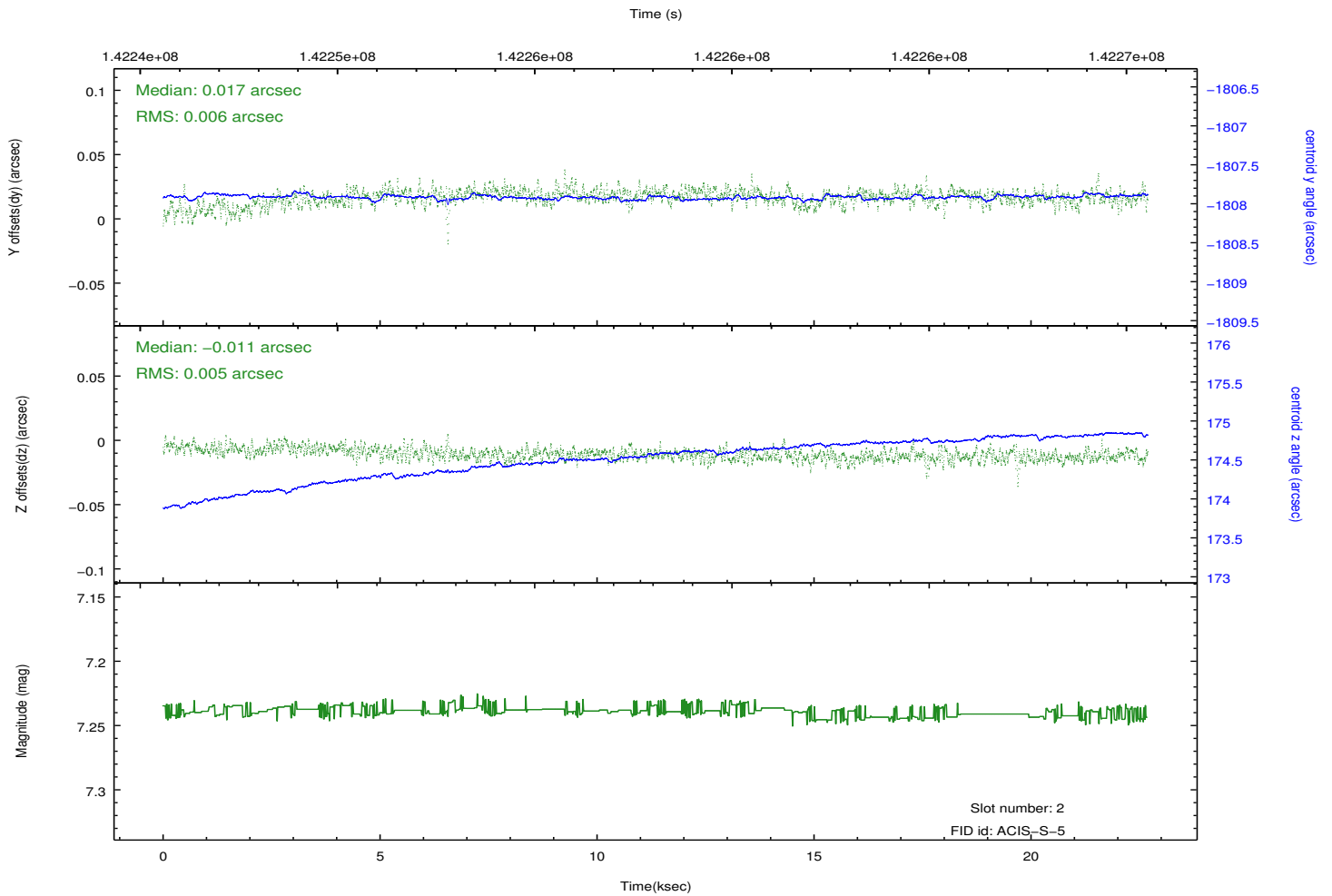
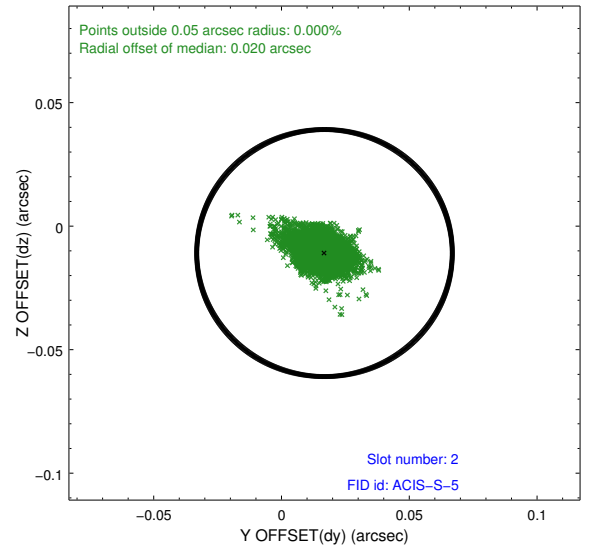
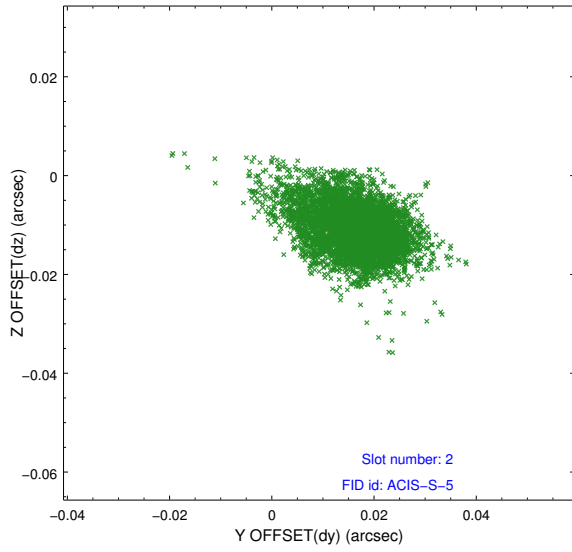
2.5.1 Slot 0



2.5.2 Slot 1



2.5.3 Slot 2



A Summary

A.1 Status

V&V Scientist	Jen Lauer
V&V Date (YYYY-MM-DD)	2012.10.19
V&V Edition	1
V&V Disposition and Status	OK
V&V Charge Time	22.259

A.2 Comments