

# V&V Reference Report

## L2 ASCDS Version : 8.4.5

Observation 2918 - L2 Version 3  
Chandra X-Ray Center

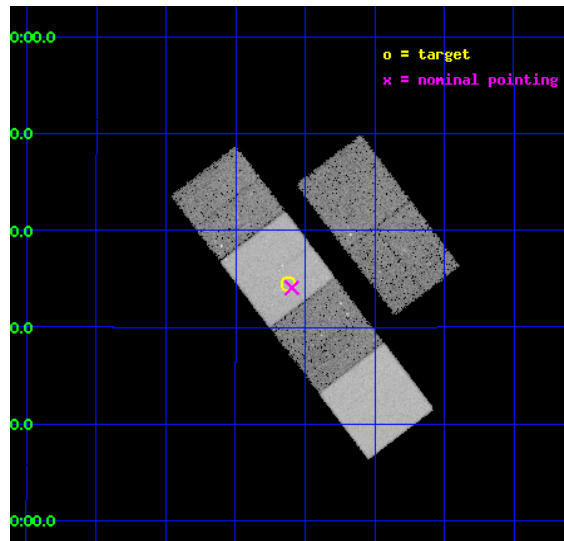
L2 Processing Date : Oct 4 2012

## Contents

<b>1</b>	<b>Front</b>	<b>2</b>
<b>2</b>	<b>OBI</b>	<b>3</b>
2.1	OBI . . . . .	3
2.1.1	Images . . . . .	3
2.1.2	Bias . . . . .	3
2.1.3	Parameters . . . . .	4
2.1.4	Events . . . . .	4
2.2	Compared Parameters . . . . .	5
2.3	Aspect . . . . .	6
2.4	Star Slots . . . . .	9
2.4.1	Slot 3 . . . . .	9
2.4.2	Slot 4 . . . . .	10
2.4.3	Slot 5 . . . . .	11
2.4.4	Slot 6 . . . . .	12
2.4.5	Slot 7 . . . . .	13
2.5	FID Slots . . . . .	14
2.5.1	Slot 0 . . . . .	14
2.5.2	Slot 1 . . . . .	15
2.5.3	Slot 2 . . . . .	16
<b>A</b>	<b>Summary</b>	<b>17</b>
A.1	Status . . . . .	17
A.2	Comments . . . . .	17

# 1 Front

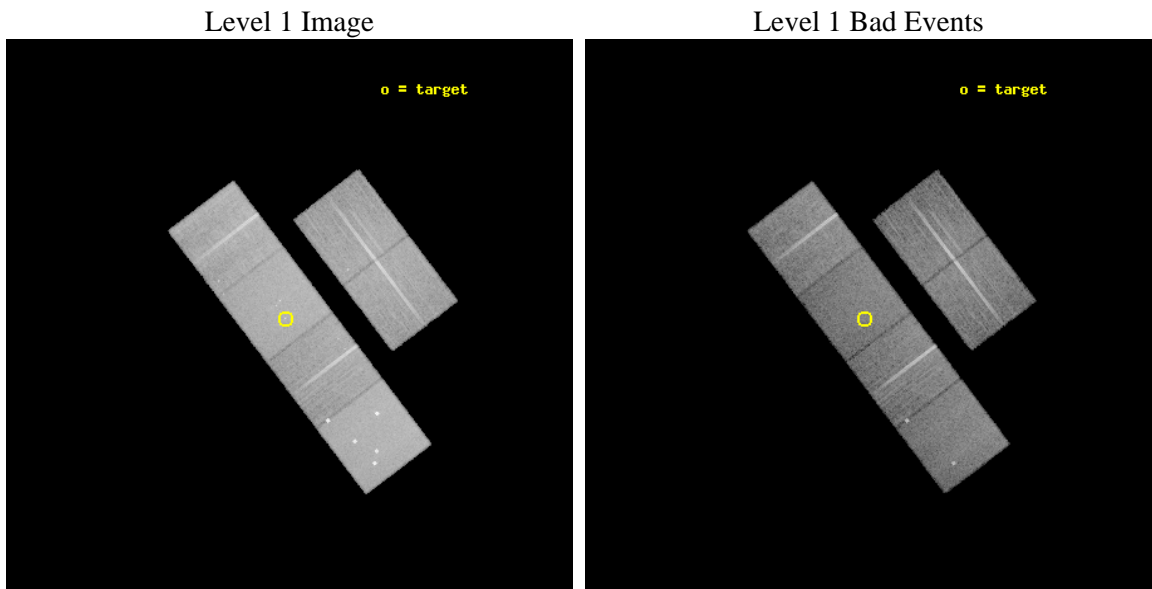
seq_num	600255	Sequence number
obs_id	2918	Observation id
title	FURTHER PROBING THE NATURE OF SUPER-LUMINOUS X-RAY SOURCES IN NEARBY GALAXIES	Proposal title
observer	Dr Timothy Roberts	Principal investigator
object	NGC 3628 X-2	Source name
dtcycle	0	&#160
cycle	P	events from which exps? Prim/Second/Both
ra_targ	170.15625	Observer's specified target RA [deg]
dec_targ	13.574444	Observer's specified target Dec [deg]
ra_nom	170.14889031591	Nominal RA [deg]
dec_nom	13.567854148922	Nominal Dec [deg]
roll_nom	232.74290404938	Nominal Roll [deg]
revision	3	Processing version of data
ontime	22252.799917102	Sum of GTIs [s]
livetime	21971.021565524	Livetime [s]
ontime2	22252.799917102	Sum of GTIs [s]
ontime3	22252.799917102	Sum of GTIs [s]
ontime5	22252.799917102	Sum of GTIs [s]
ontime6	22252.799917102	Sum of GTIs [s]
ontime7	22252.799917102	Sum of GTIs [s]
ontime8	22249.559046417	Sum of GTIs [s]
l2events	220994	Number of level 2 events



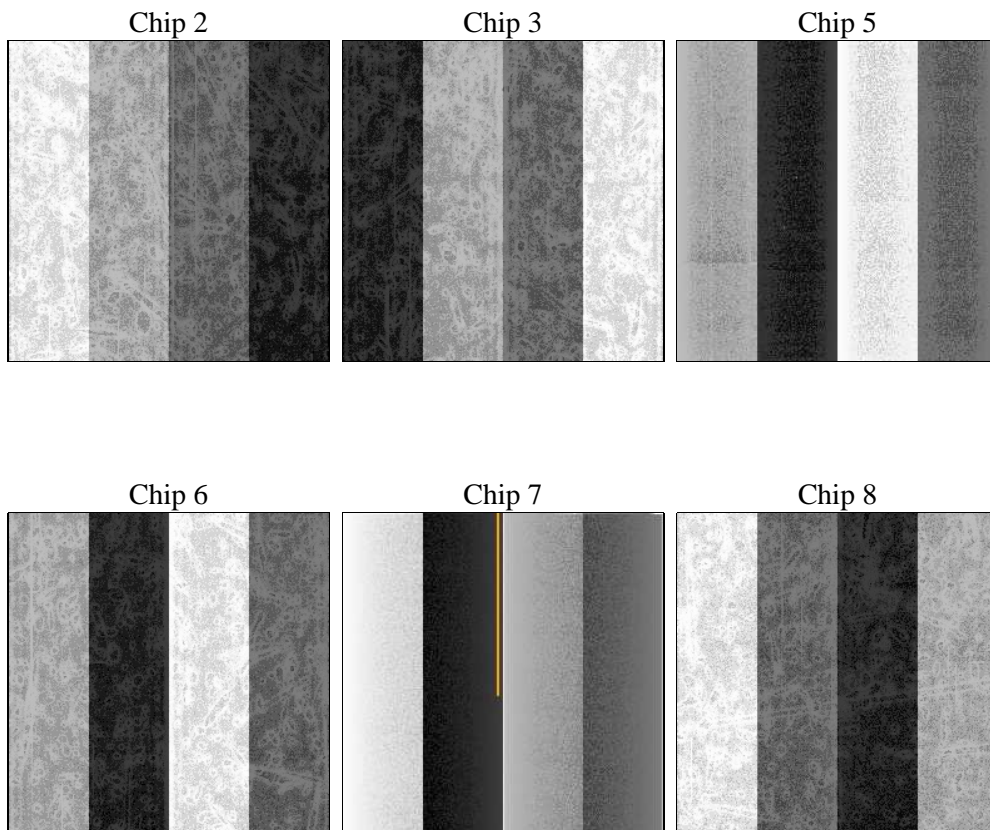
## 2 OBI

### 2.1 OBI

#### 2.1.1 Images



#### 2.1.2 Bias



### 2.1.3 Parameters

obi_num	3	Obi number	sched_exp_time	22500.000000	[s] Scheduled observation exposure time
ascdsver	8.4.5	Processing system revision	ontime	22252.799917102	Sum of GTIs [s]
caldsver	4.5.2	&#160	ontime2	22252.799917102	Sum of GTIs [s]
date	2012-10-04T19:05:33	Date and time of file creation	ontime3	22252.799917102	Sum of GTIs [s]
revision	3	Processing version of data	ontime5	22252.799917102	Sum of GTIs [s]
			ontime6	22252.799917102	Sum of GTIs [s]
			ontime7	22252.799917102	Sum of GTIs [s]
			ontime8	22249.559046417	Sum of GTIs [s]
			l1events	1017482	Number of level 1 events

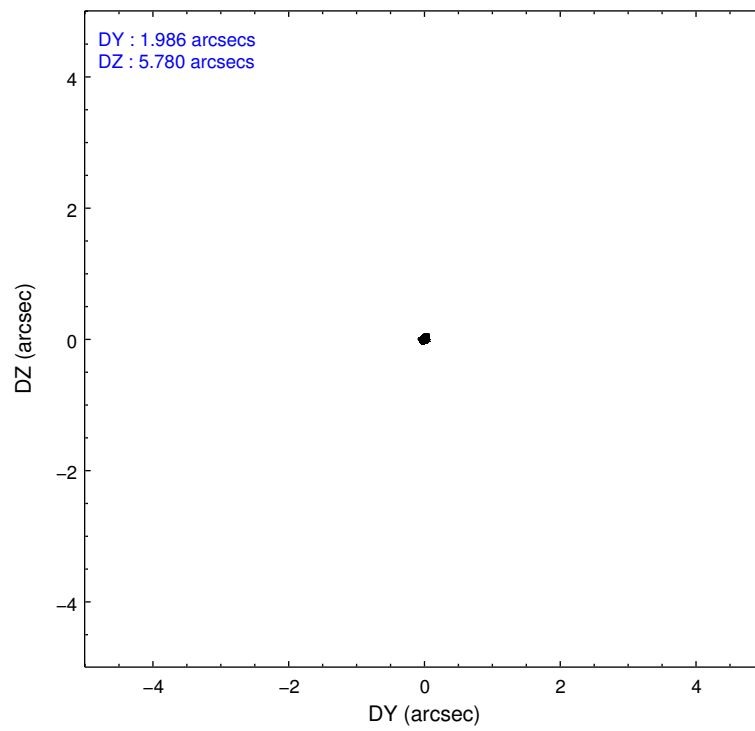
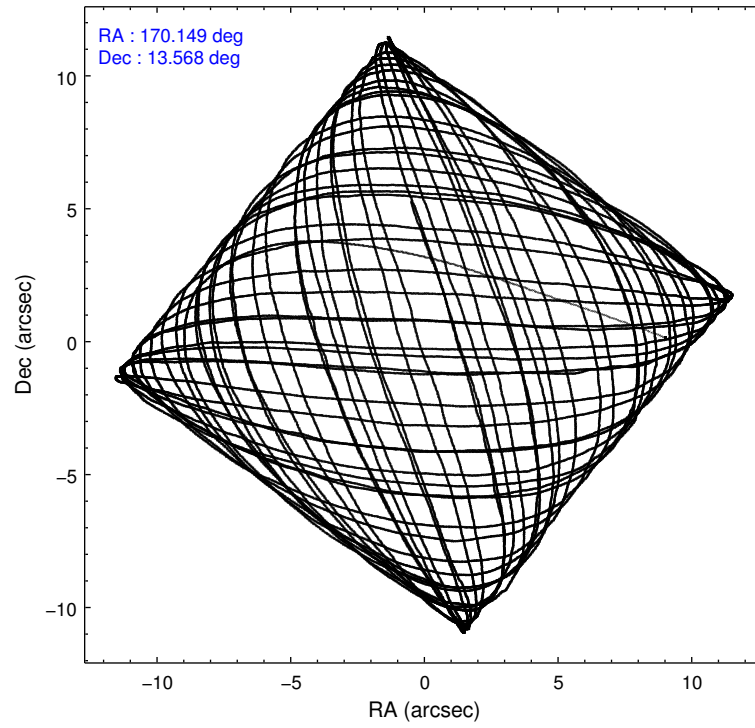
### 2.1.4 Events

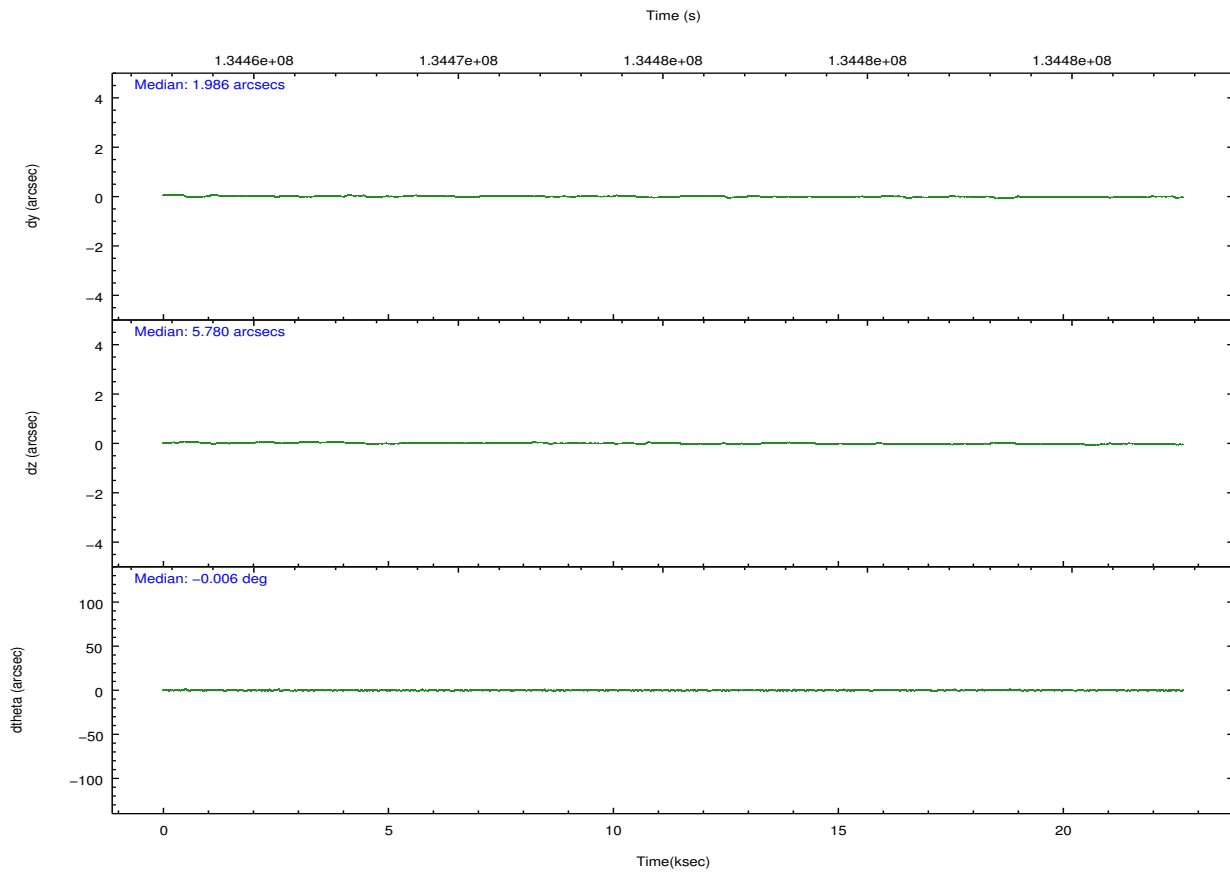
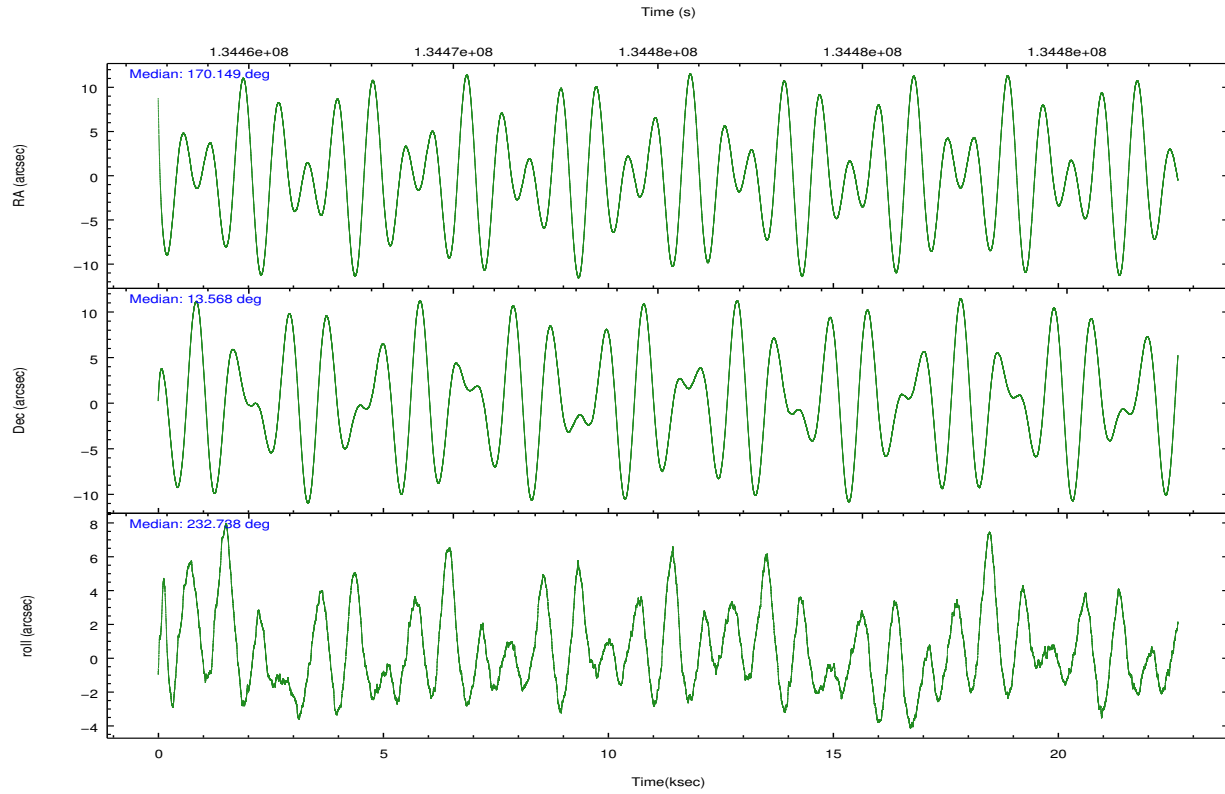
	ccd 2	ccd 3	ccd 5	ccd 6	ccd 7	ccd 8		ccd 2	ccd 3	ccd 5	ccd 6	ccd 7	ccd 8
level 1 events	147759	141699	212515	143428	187259	184822	grade 0 events	6825	7007	15492	6703	7354	11614
rejected events	131402	125305	112643	126758	109875	147691		4%	4%	7%	4%	3%	6%
rejected %	88%	88%	53%	88%	58%	79%	grade 1 events	61	67	756	67	163	117
								0%	0%	0%	0%	0%	0%
							grade 2 events	3620	3304	27210	3382	15174	8047
								2%	2%	12%	2%	8%	4%
							grade 3 events	1564	1650	4156	1699	6944	4077
								1%	1%	1%	1%	3%	2%
							grade 4 events	1573	1570	3733	1580	6855	3758
								1%	1%	1%	1%	3%	2%
							grade 5 events	5210	5685	15655	6076	17789	7806
								3%	4%	7%	4%	9%	4%
							grade 6 events	2786	2866	49307	3309	41081	9636
								1%	2%	23%	2%	21%	5%
							grade 7 events	126120	119550	96206	120612	91899	139767
								85%	84%	45%	84%	49%	75%

## 2.2 Compared Parameters

Parameter	Planned	Actual	Parameter	Planned	Actual
Instrument	ACIS	ACIS	Obspar format version number	7	7
Detector	ACIS-235678	ACIS-235678	Obspar file type	PREDICTED	ACTUAL
Grating	NONE	NONE	Obspar update status	NONE	UPDATED
Data mode	FAINT	FAINT	Number of optional ACIS chips dropped	0	0
Observation mode	POINTING	POINTING	On-chip summing requested	N	N
[deg] Pointing RA	170.152091	170.1488903159108	Subarray requested	NONE	NONE
[deg] Pointing Dec	13.594951	13.56785414892159	Alternating exposures requested	N	N
[deg] Pointing Roll	232.585526	232.7429040493838	[s] Primary exposure time	0.000000	3.2
[mm] SIM focus pos	-0.684267	-0.6828225247311905			
[mm] SIM defocus	0	0.001444936568705701			
[mm] SIM translation stage pos	-190.132523	-190.1425803651734			
[mm] SIM translation stage offset	0	0.01005778216563158			
[s] Observation start time (MET)	134464078.184000	134462674.65676			
Observation start date	2002-04-06T07:06:54	2002-04-06T06:44:34			
[s] Observation end time (MET)	134486578.184000	134487281.32026			
Observation end date	2002-04-06T13:21:54	2002-04-06T13:34:41			
Read mode	TIMED	TIMED			

## 2.3 Aspect



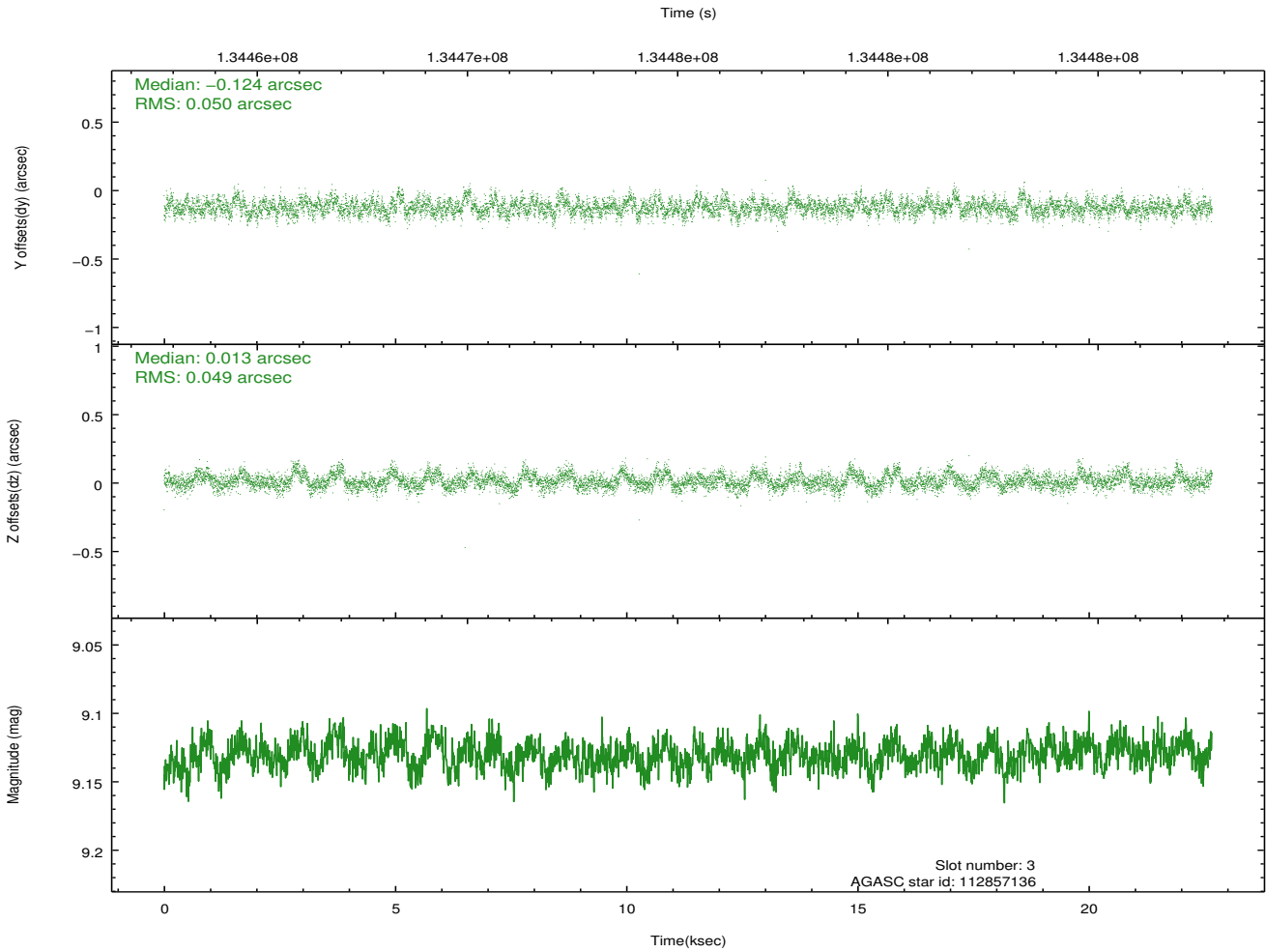
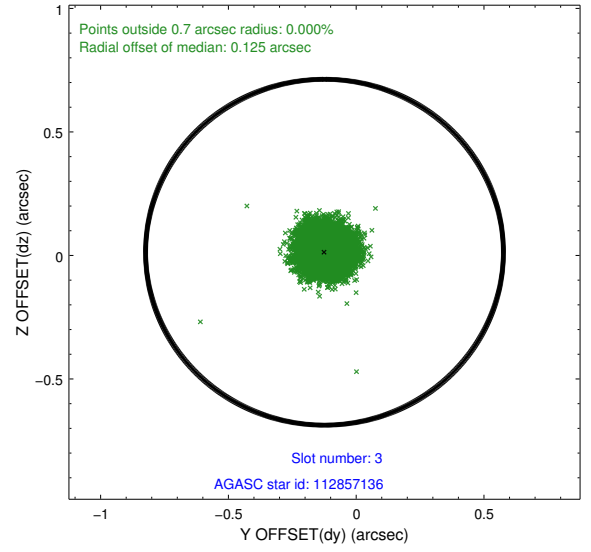
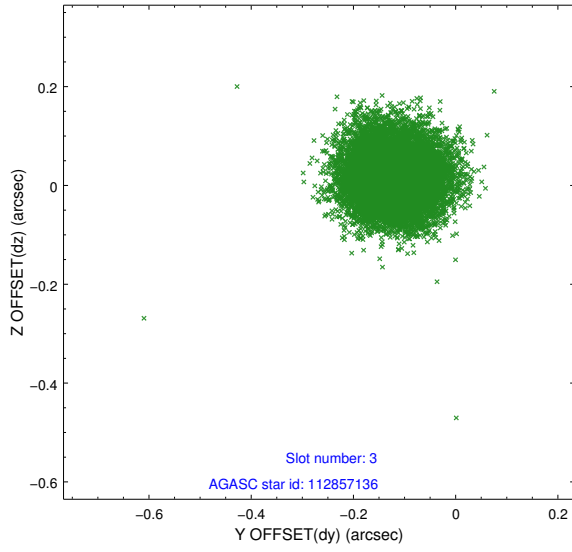


### Slot Statistics

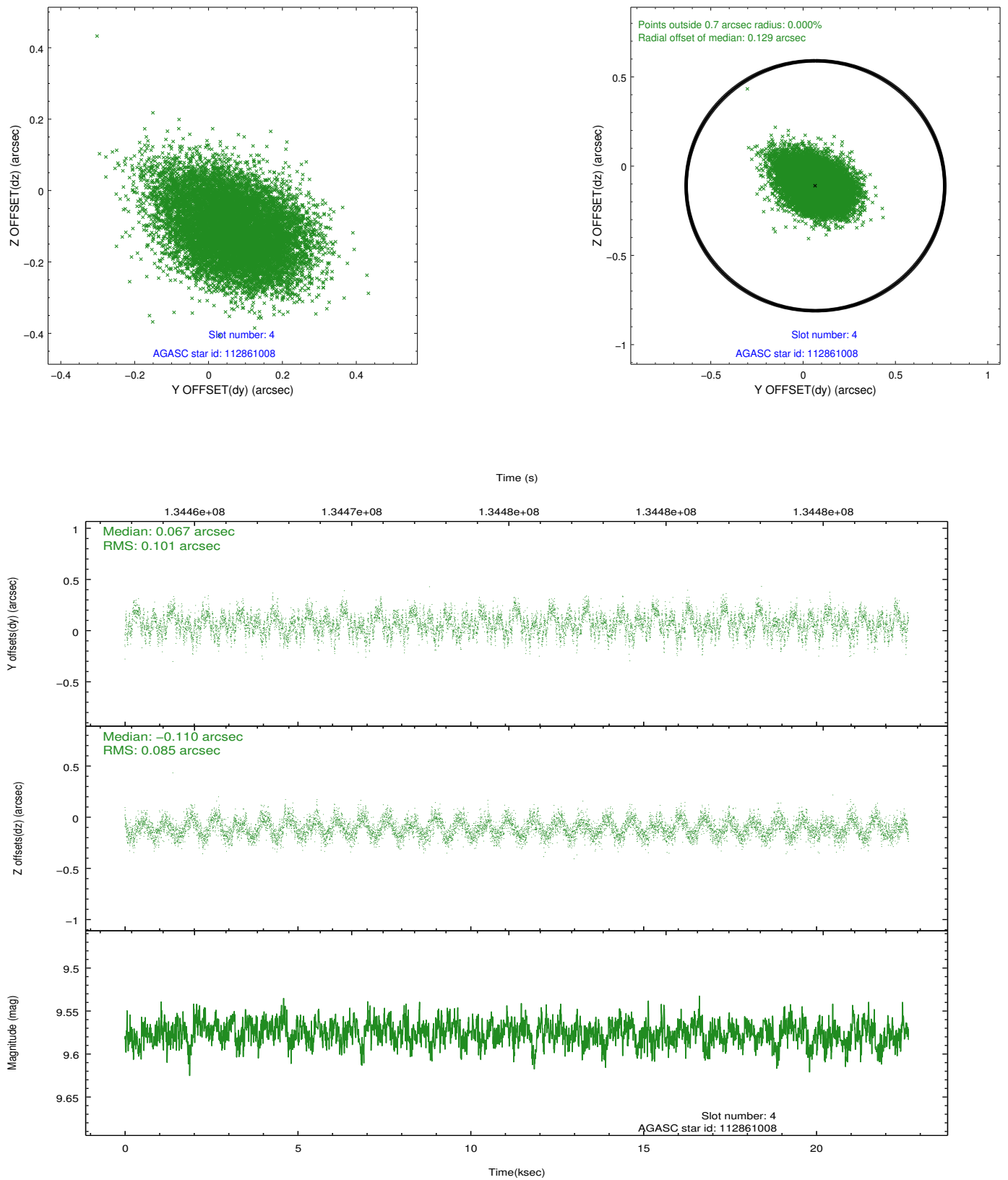
slot	status	id	mag	n_pts	med_dy	med_dz	dr1	dr2	ra	dec	mean_y	mean_z
0	FID	ACIS-S-2	7.12	5527	-0.055	-0.002	0.006	0.011	0.000000	0.000000	-754.60	-1726.89
1	FID	ACIS-S-4	7.21	5526	-0.007	0.027	0.006	0.011	0.000000	0.000000	2158.60	181.56
2	FID	ACIS-S-5	7.24	5528	0.030	-0.016	0.007	0.011	0.000000	0.000000	-1807.23	175.24
3	GUIDE	112857136	9.13	11051	-0.124	0.013	0.075	0.120	170.586186	13.944462	-1921.76	439.51
4	GUIDE	112861008	9.58	11051	0.067	-0.110	0.140	0.226	169.237349	13.494852	2227.56	-2327.73
5	GUIDE	112862424	9.43	11049	0.019	0.061	0.082	0.136	170.459633	13.475243	-311.94	1116.70
6	GUIDE	112857720	9.37	11054	-0.013	-0.063	0.089	0.147	169.841312	13.775016	145.25	-1257.00
7	GUIDE	112862568	9.60	11046	0.051	0.097	0.120	0.207	170.030630	13.021719	1898.17	915.84

## 2.4 Star Slots

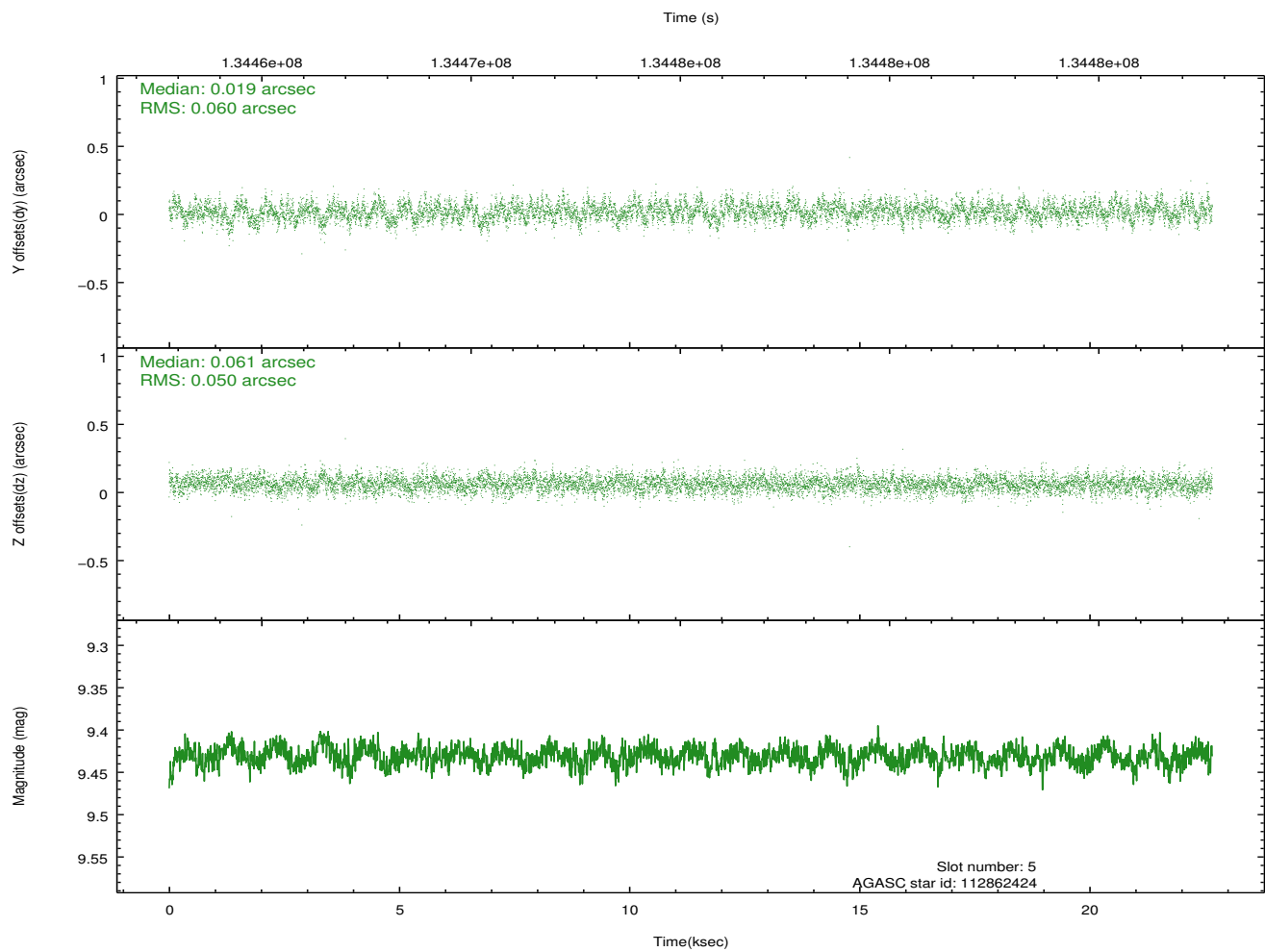
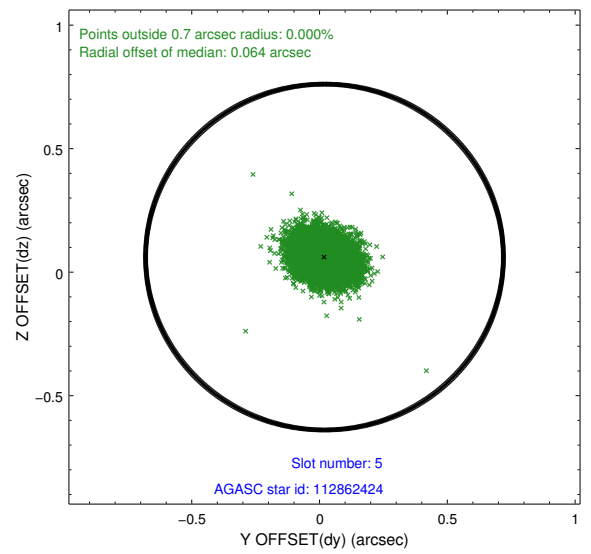
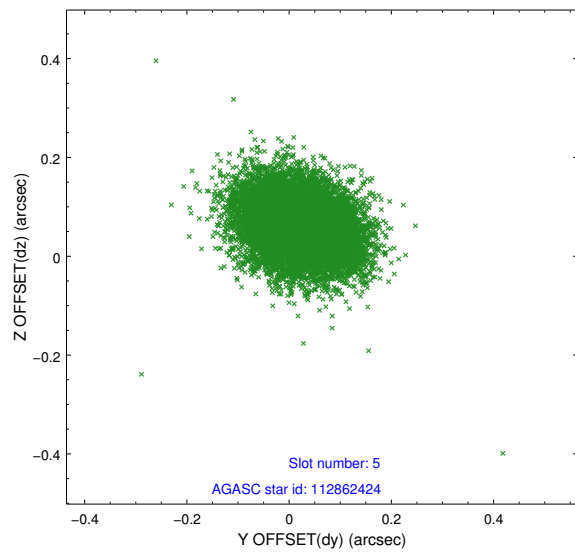
### 2.4.1 Slot 3



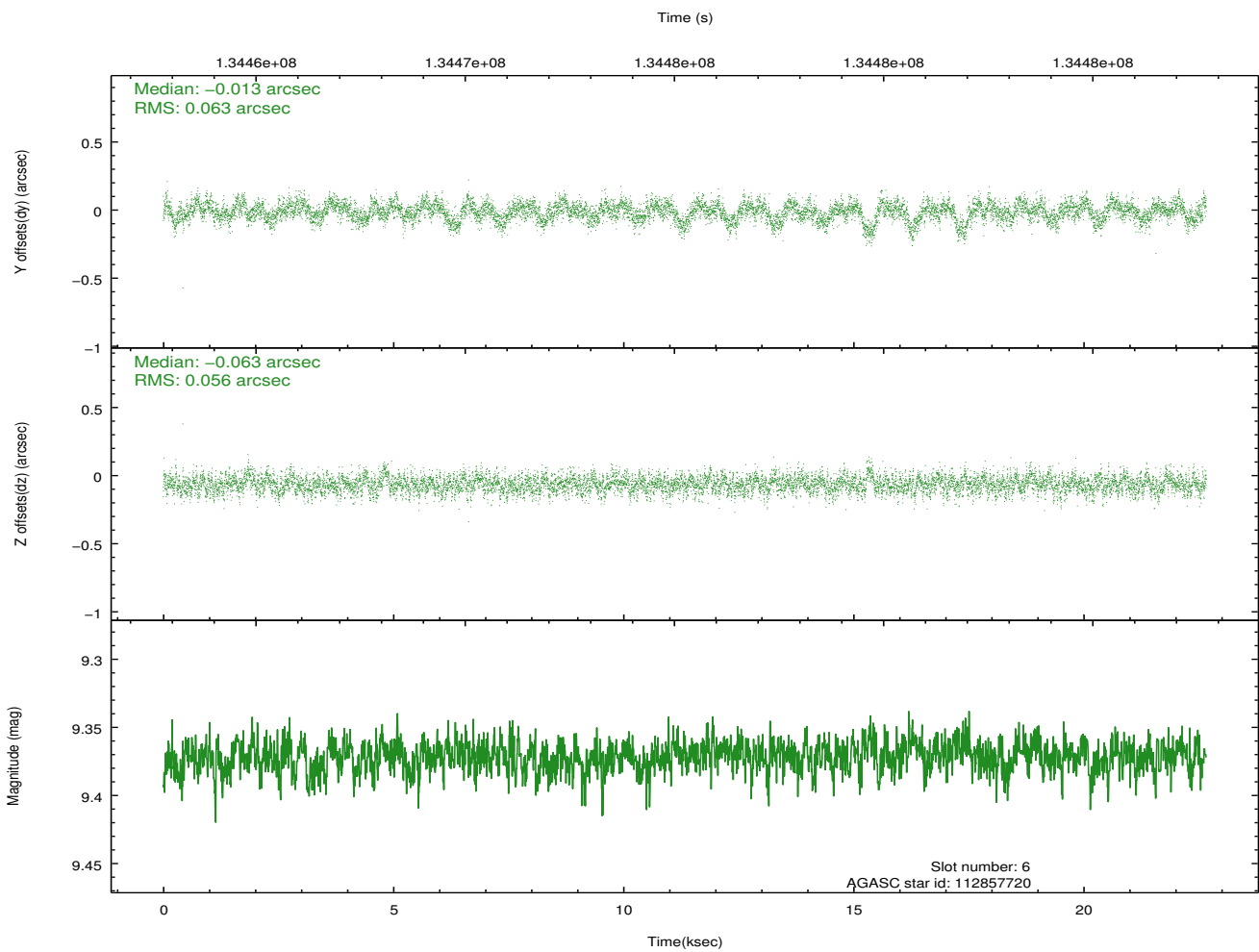
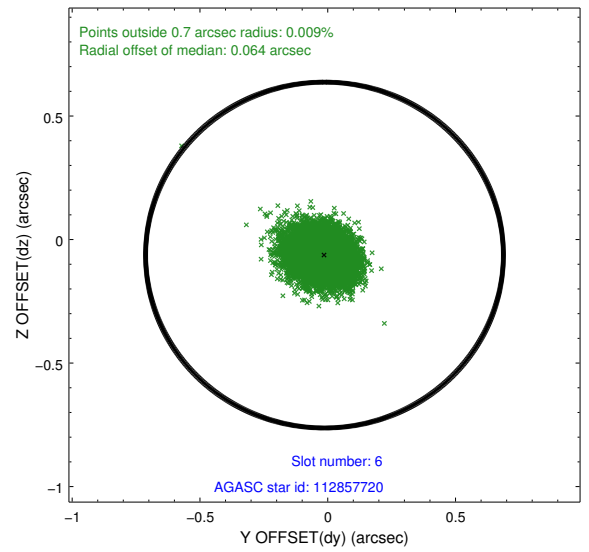
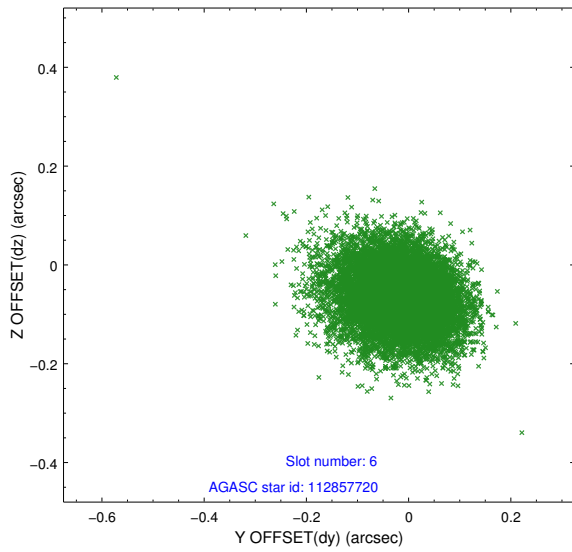
## 2.4.2 Slot 4



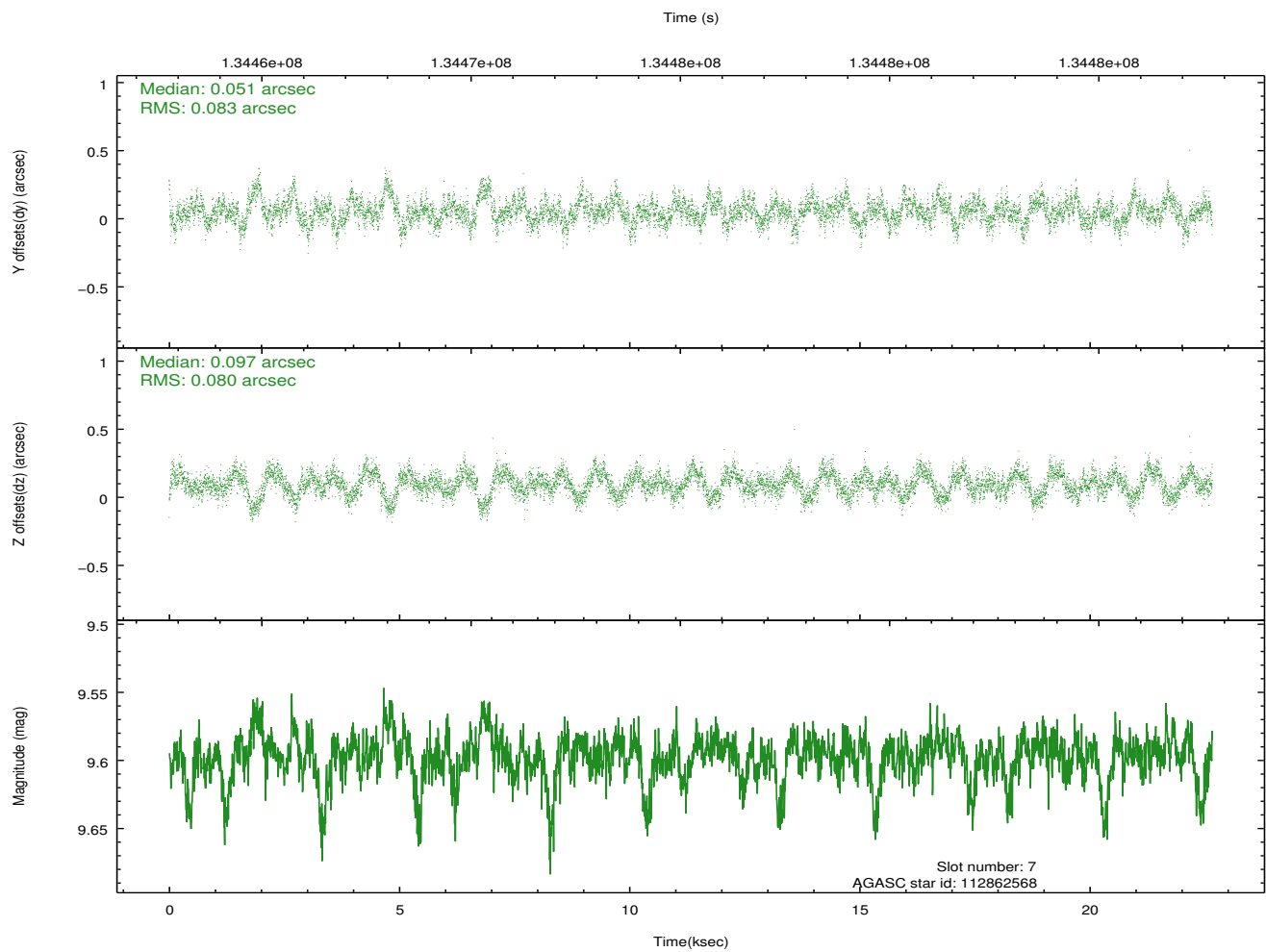
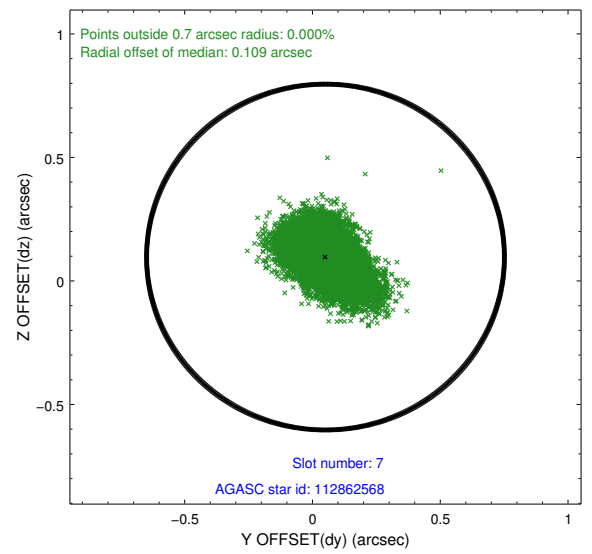
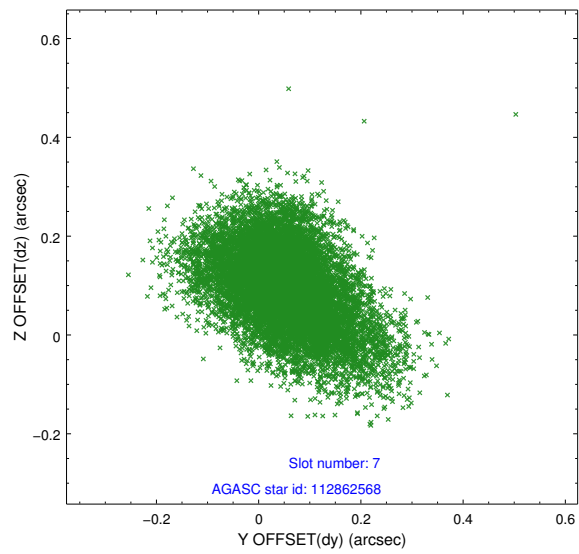
### 2.4.3 Slot 5



## 2.4.4 Slot 6

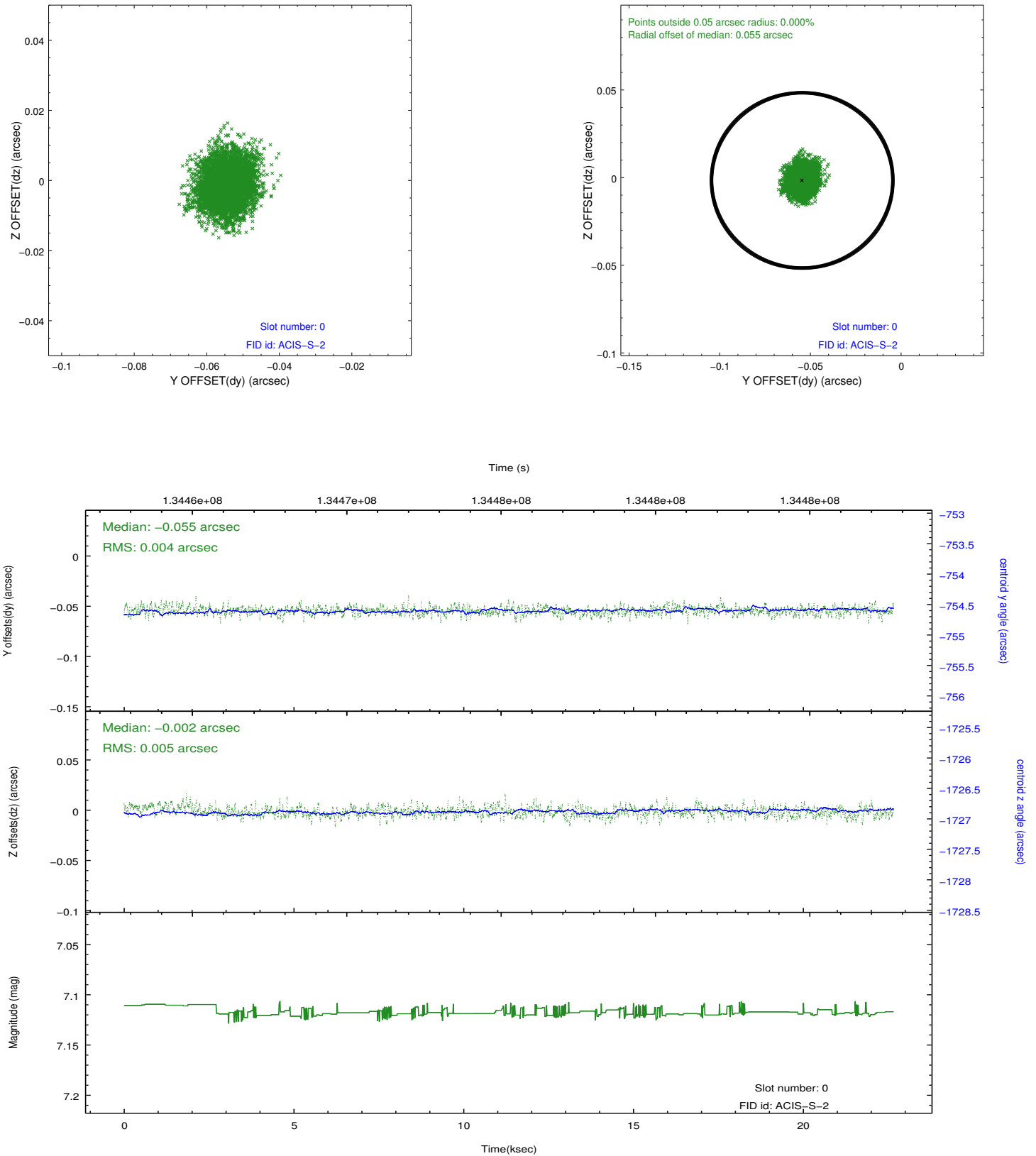


## 2.4.5 Slot 7

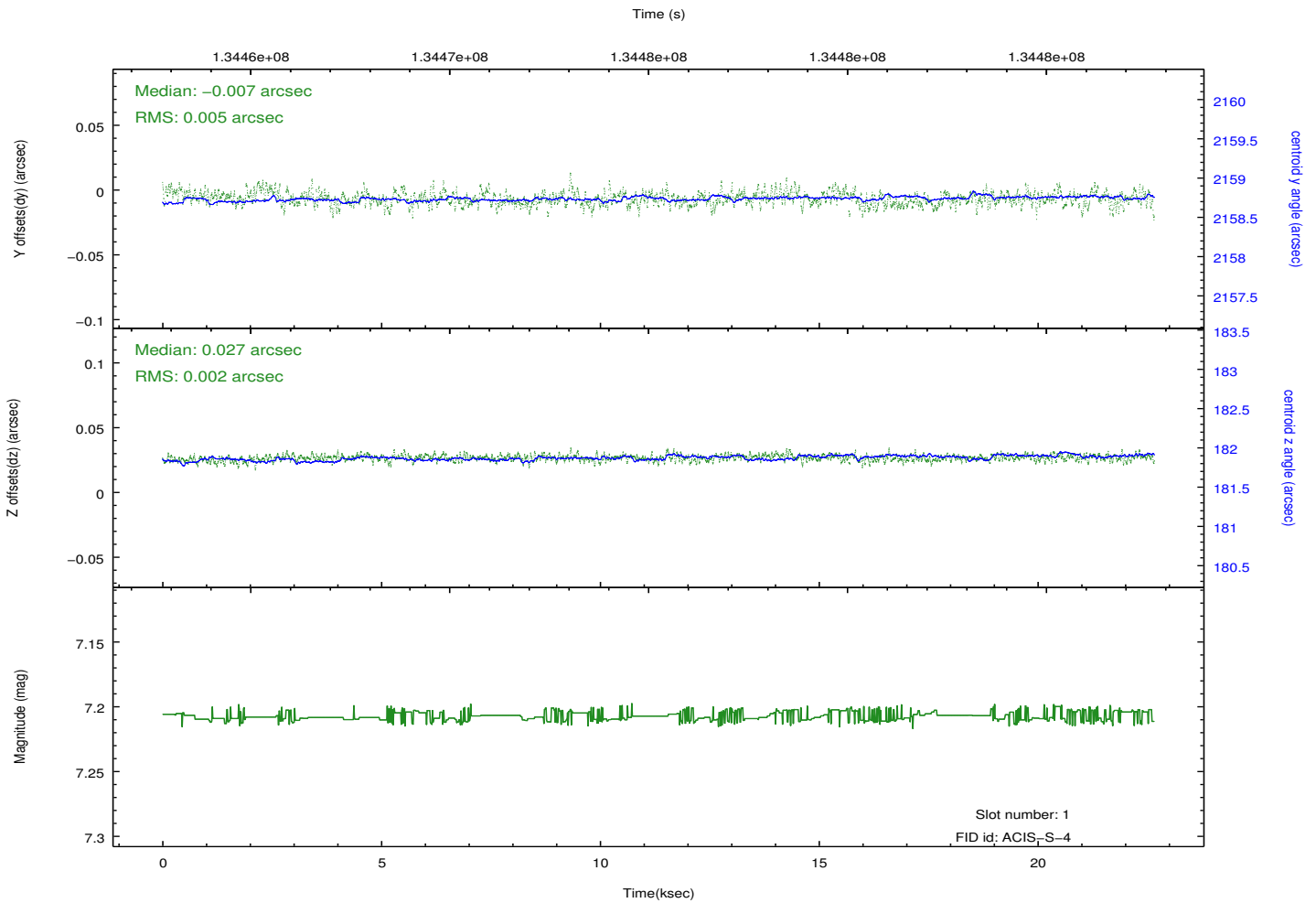
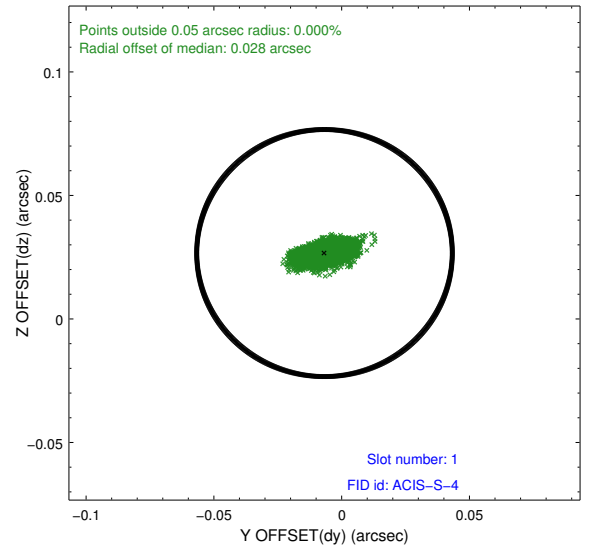
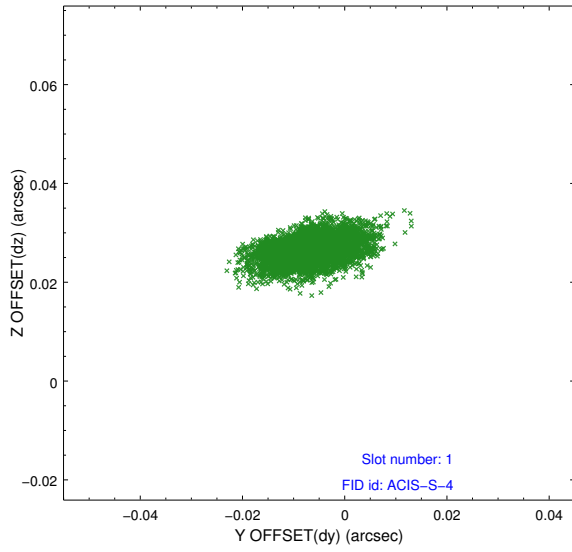


## 2.5 FID Slots

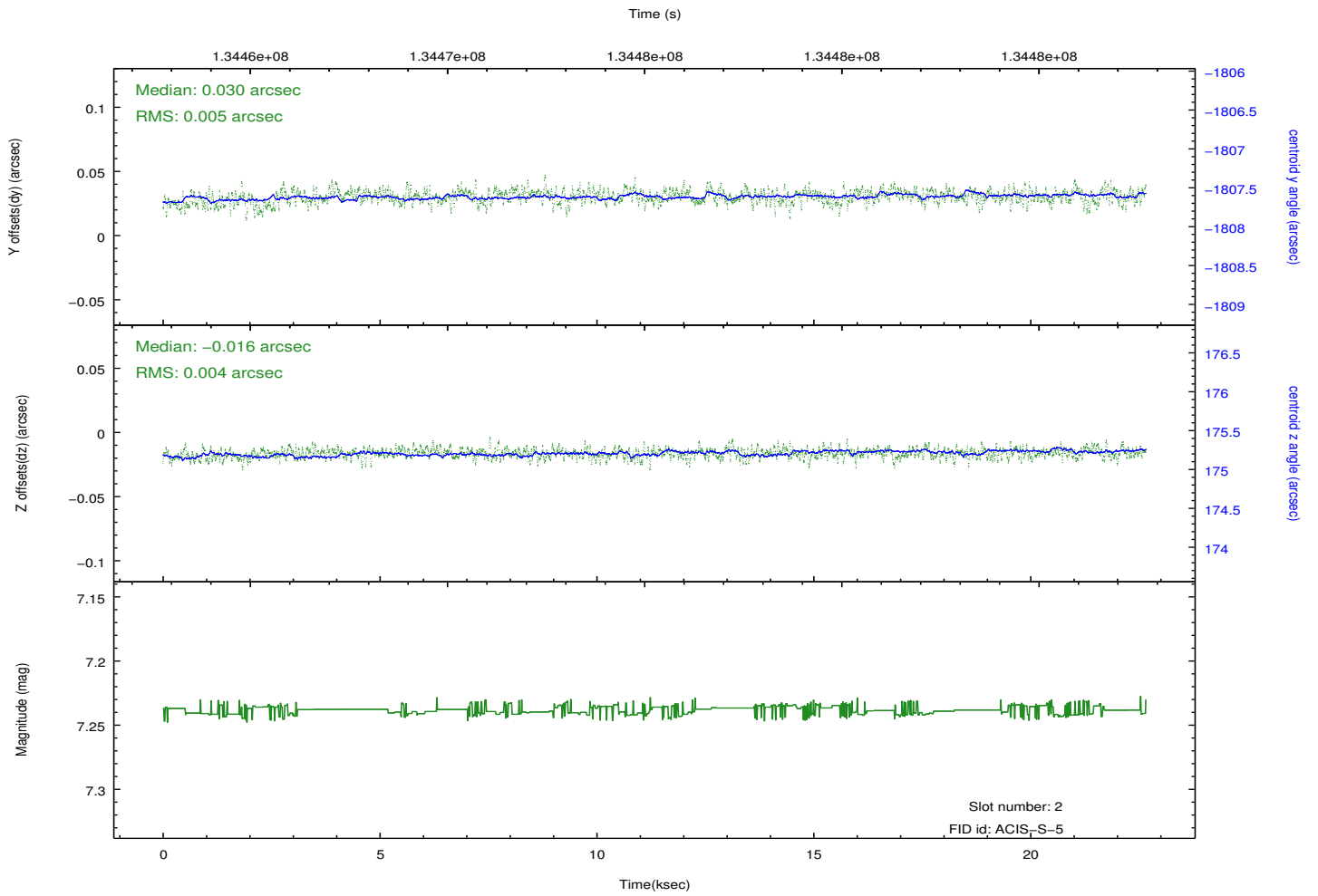
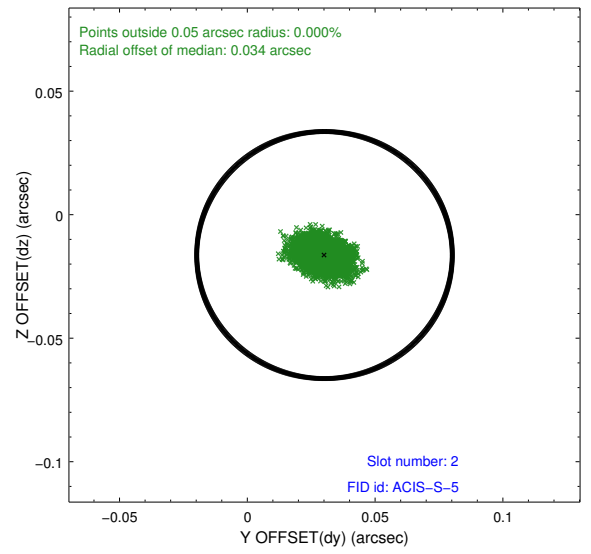
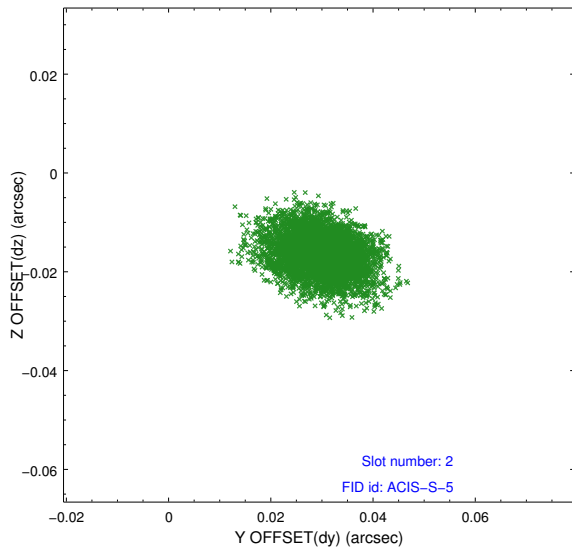
### 2.5.1 Slot 0



## 2.5.2 Slot 1



### 2.5.3 Slot 2



# A Summary

## A.1 Status

V&V Scientist	Beth Sundheim
V&V Date (YYYY-MM-DD)	2012.10.09
V&V Edition	1
V&V Disposition and Status	OK
V&V Charge Time	22.256

## A.2 Comments