

V&V Reference Report

L2 ASCDS Version : 8.4.5

Observation 2978 - L2 Version 3
Chandra X-Ray Center

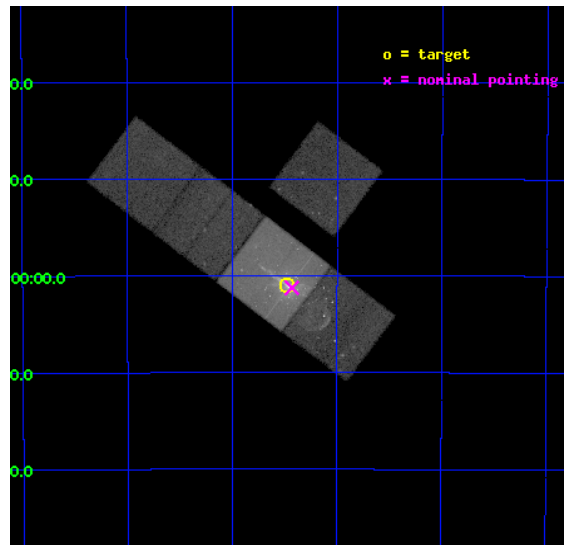
L2 Processing Date : Oct 13 2012

Contents

1	Front	2
2	OBI	3
2.1	OBI	3
2.1.1	Images	3
2.1.2	Bias	3
2.1.3	Parameters	4
2.1.4	Events	4
2.2	Compared Parameters	5
2.3	Aspect	6
2.4	Star Slots	9
2.4.1	Slot 3	9
2.4.2	Slot 4	10
2.4.3	Slot 5	11
2.4.4	Slot 6	12
2.4.5	Slot 7	13
2.5	FID Slots	14
2.5.1	Slot 0	14
2.5.2	Slot 1	15
2.5.3	Slot 2	16
A	Summary	17
A.1	Status	17
A.2	Comments	17

1 Front

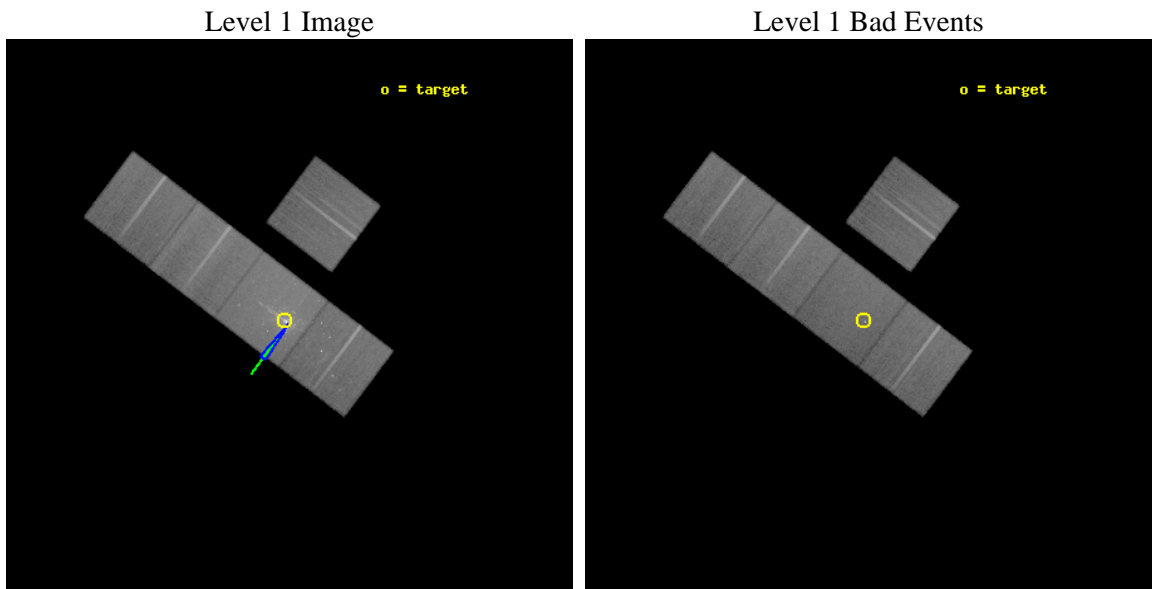
seq_num	700417	Sequence number
obs_id	2978	Observation id
title	FOLLOW-UP OBSERVATIONS OF THE RADIO GALAXY CEN-A	Proposal title
observer	Dr. Stephen Murray	Principal investigator
object	CEN-A	Source name
dtcycle	0	
cycle	P	events from which exps? Prim/Second/Both
ra_targ	201.369542	Observer's specified target RA [deg]
dec_targ	-43.016583	Observer's specified target Dec [deg]
ra_nom	201.35773867452	Nominal RA [deg]
dec_nom	-43.020983768183	Nominal Dec [deg]
roll_nom	217.14858200928	Nominal Roll [deg]
revision	3	Processing version of data
ontime	45179.399913102	Sum of GTIs [s]
livetime	44589.097792647	Livetime [s]
ontime3	45179.399913102	Sum of GTIs [s]
ontime6	45179.399913102	Sum of GTIs [s]
ontime7	45179.399913102	Sum of GTIs [s]
ontime8	45179.399913102	Sum of GTIs [s]
ontime9	45179.395029396	Sum of GTIs [s]
l2events	392051	Number of level 2 events



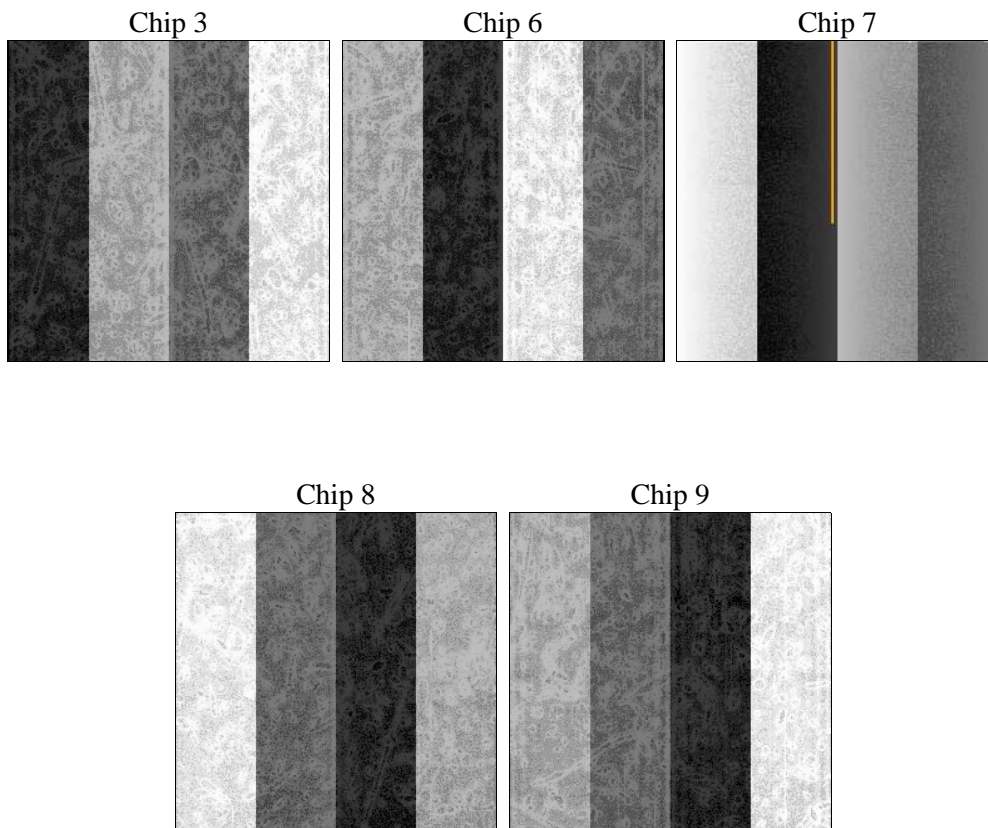
2 OBI

2.1 OBI

2.1.1 Images



2.1.2 Bias



2.1.3 Parameters

obi_num	0	Obi number	sched_exp_time	45000.000000	[s] Scheduled observation exposure time
ascdsver	8.4.5	Processing system revision	ontime	45179.399913102	Sum of GTIs [s]
caldbver	4.5.2	 	ontime3	45179.399913102	Sum of GTIs [s]
date	2012-10-13T06:12:17	Date and time of file creation	ontime6	45179.399913102	Sum of GTIs [s]
revision	3	Processing version of data	ontime7	45179.399913102	Sum of GTIs [s]
			ontime8	45179.399913102	Sum of GTIs [s]
			ontime9	45179.395029396	Sum of GTIs [s]
			l1events	1683952	Number of level 1 events

2.1.4 Events

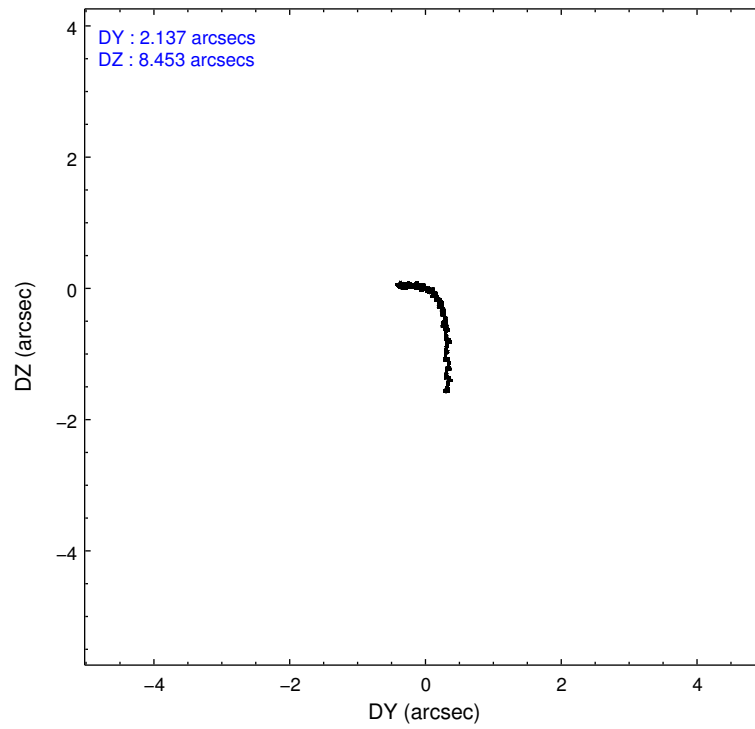
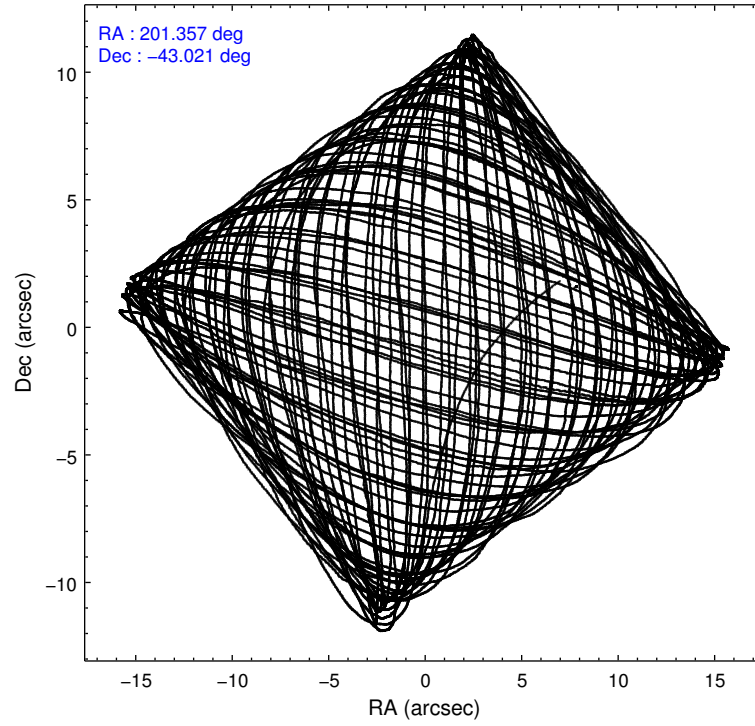
	ccd 3	ccd 6	ccd 7	ccd 8	ccd 9
level 1 events	276794	299209	471188	355549	281212
rejected events	242401	250334	219654	279600	244499
rejected %	87%	83%	46%	78%	86%

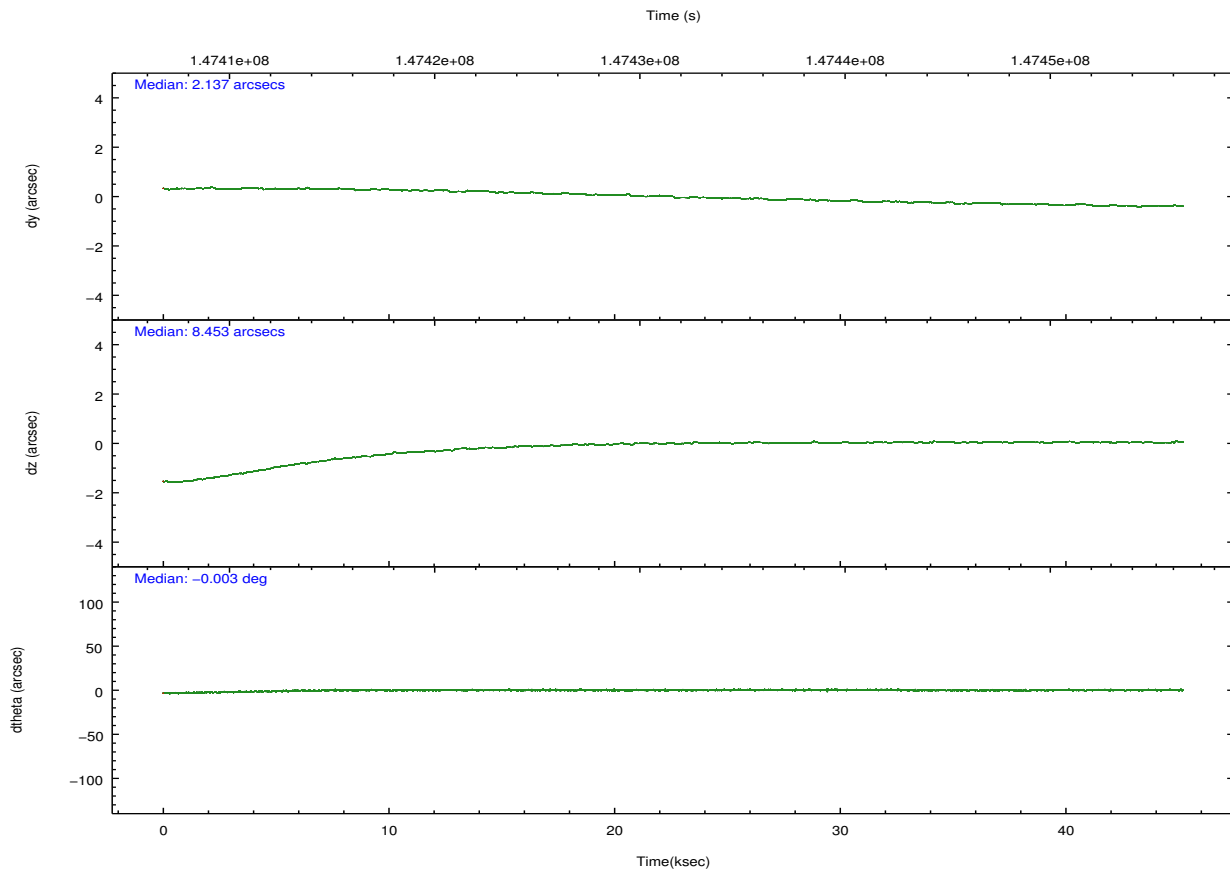
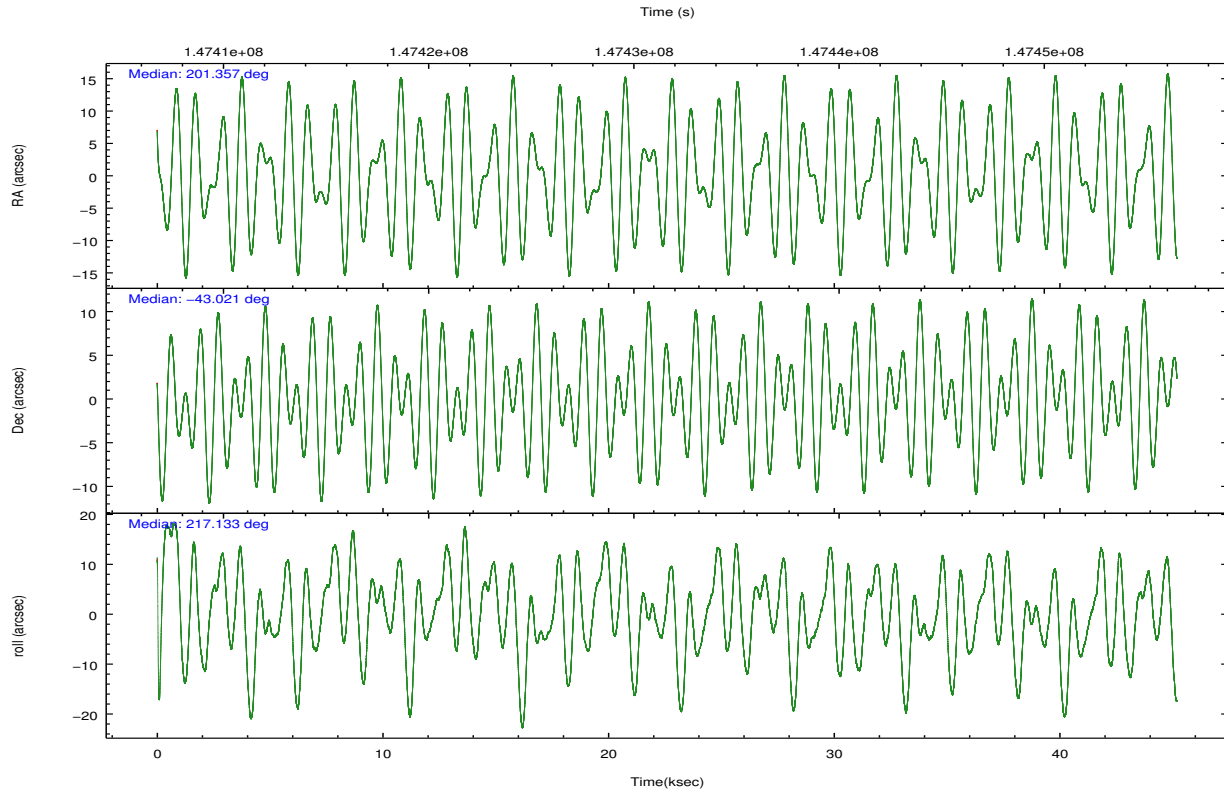
	ccd 3	ccd 6	ccd 7	ccd 8	ccd 9
grade 0 events	16336	26206	42891	26515	16804
	5%	8%	9%	7%	5%
grade 1 events	162	184	659	229	159
	0%	0%	0%	0%	0%
grade 2 events	6060	8235	55613	15744	6611
	2%	2%	11%	4%	2%
grade 3 events	3316	3758	24721	7827	3441
	1%	1%	5%	2%	1%
grade 4 events	3180	3640	24519	7239	3346
	1%	1%	5%	2%	1%
grade 5 events	11773	12353	36973	15960	13259
	4%	4%	7%	4%	4%
grade 6 events	5503	7039	103806	18631	6512
	1%	2%	22%	5%	2%
grade 7 events	230464	237794	182006	263404	231080
	83%	79%	38%	74%	82%

2.2 Compared Parameters

Parameter	Planned	Actual	Parameter	Planned	Actual
Instrument	ACIS	ACIS	Obspar format version number	7	7
Detector	ACIS-36789	ACIS-36789	Obspar file type	PREDICTED	ACTUAL
Grating	NONE	NONE	Obspar update status	NONE	UPDATED
Data mode	FAINT	FAINT	Number of optional ACIS chips dropped	0	0
Observation mode	POINTING	POINTING	On-chip summing requested	N	N
[deg] Pointing RA	201.371754	201.3577386745217	Subarray requested	NONE	NONE
[deg] Pointing Dec	-42.995747	-43.02098376818275	Alternating exposures requested	N	N
[deg] Pointing Roll	217.001503	217.1485820092796	[s] Primary exposure time	0.000000	3.1
[deg] Roll angle	217.000000	217.000000			
[deg] Roll tolerance	5.000000	5.000000			
Roll constraint allows 180D rotation	N	N			
[mm] SIM focus pos	-0.684267	-0.6828225247311905			
[mm] SIM defocus	0	0.001444936568705701			
[mm] SIM translation stage pos	-190.132523	-190.1400660498719			
[mm] SIM translation stage offset	0	0.00754346686406393			
[s] Observation start time (MET)	147409210.184000	147408210.96189			
Observation start date	2002-09-03T02:59:06	2002-09-03T02:43:30			
[s] Observation end time (MET)	147454210.184000	147454991.96382			
Observation end date	2002-09-03T15:29:06	2002-09-03T15:43:11			
Read mode	TIMED	TIMED			

2.3 Aspect



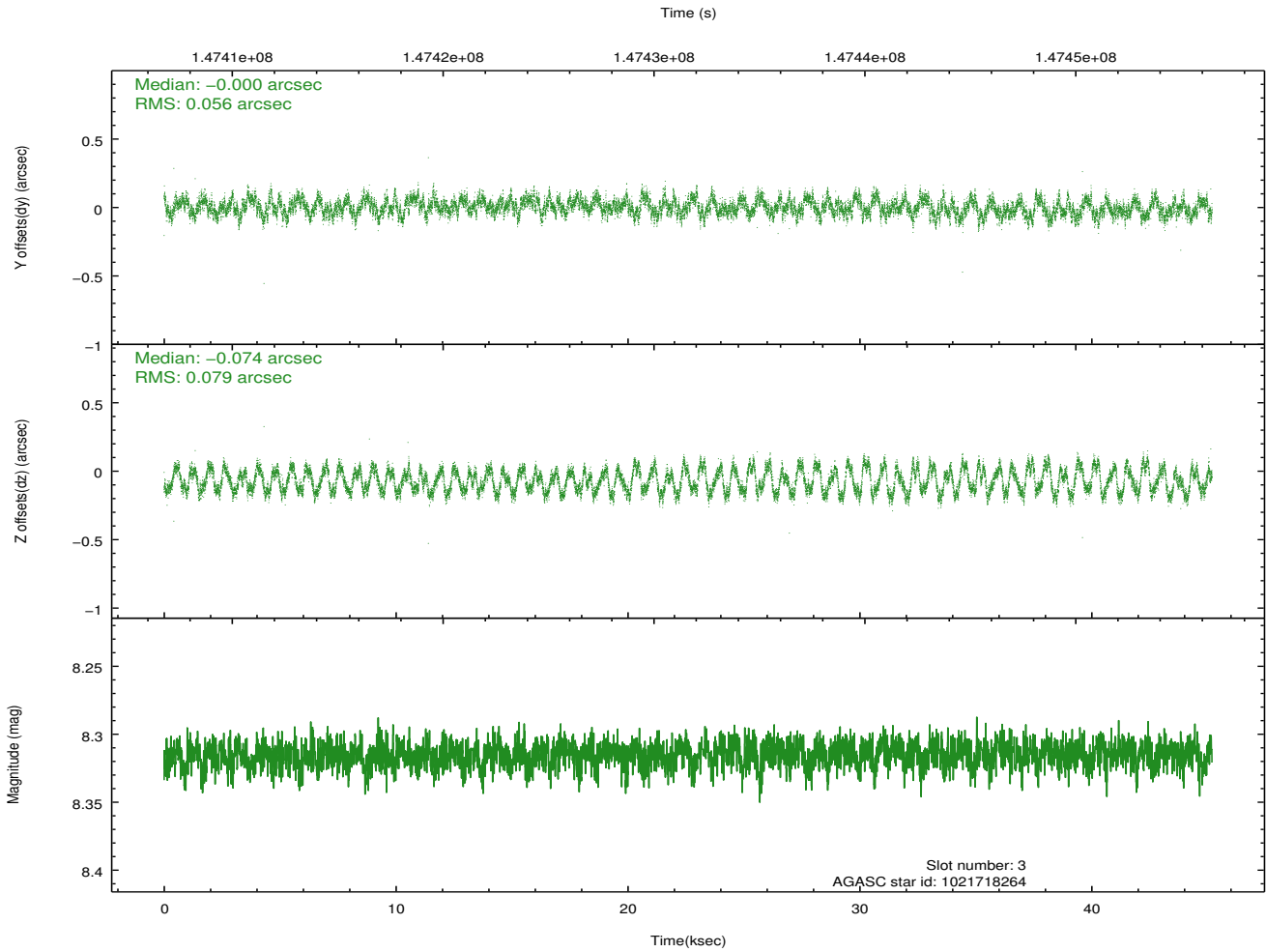
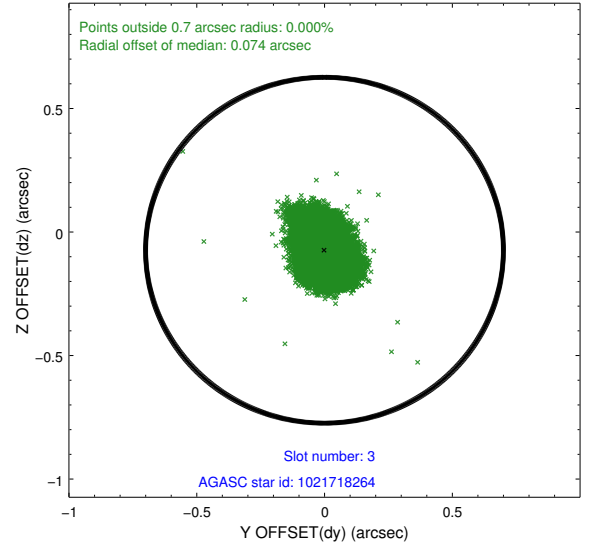
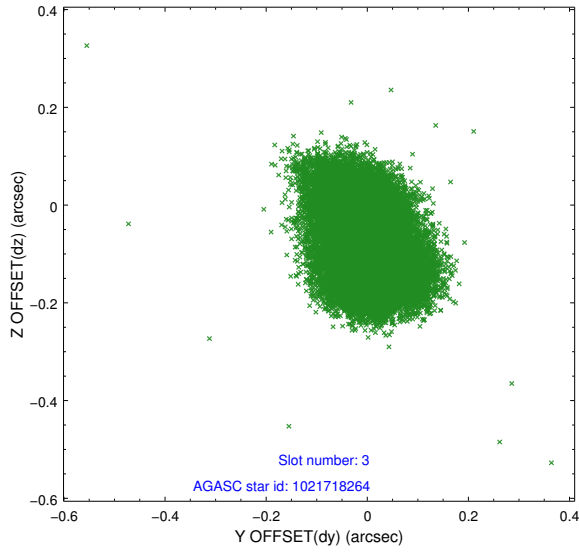


Slot Statistics

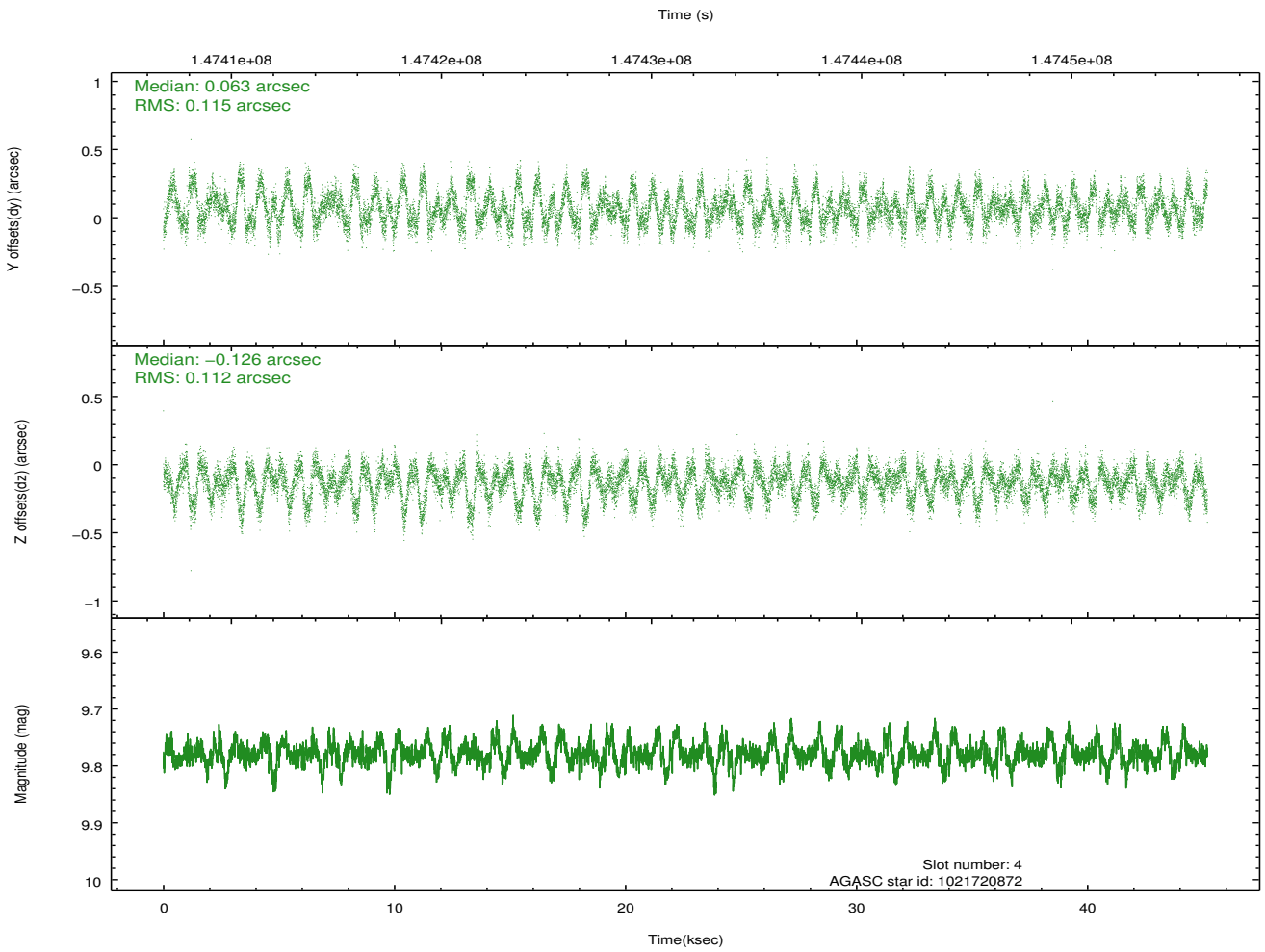
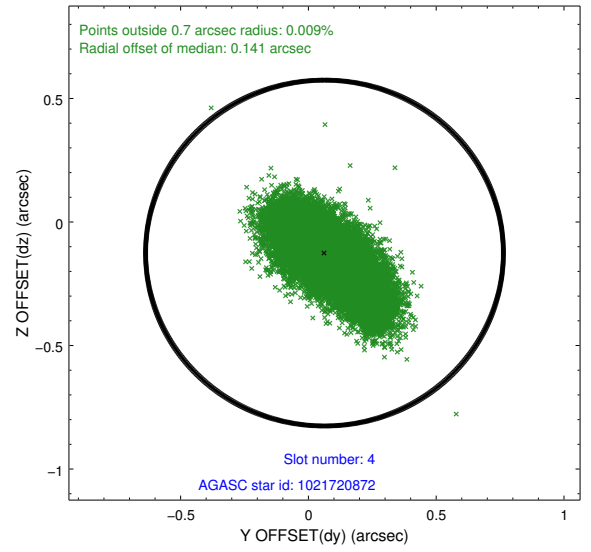
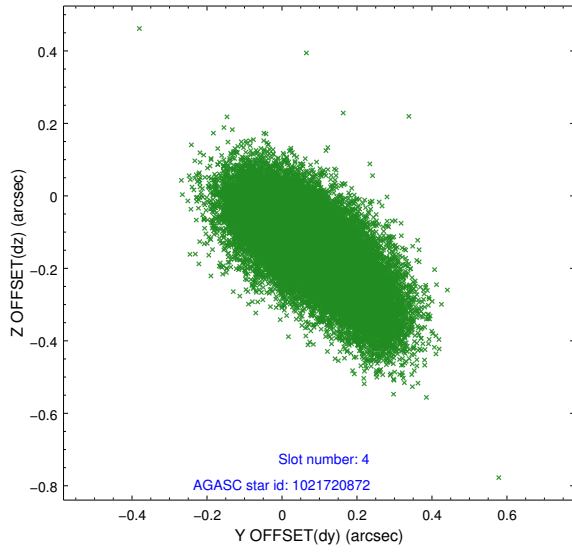
slot	status	id	mag	n_pts	med_dy	med_dz	dr1	dr2	ra	dec	mean_y	mean_z
0	FID	ACIS-S-2	7.10	11023	-0.016	0.001	0.014	0.024	0.000000	0.000000	-754.78	-1729.40
1	FID	ACIS-S-4	7.20	11020	-0.028	0.007	0.012	0.036	0.000000	0.000000	2158.51	179.07
2	FID	ACIS-S-5	7.24	11022	0.010	0.001	0.011	0.020	0.000000	0.000000	-1807.59	172.76
3	GUIDE	1021718264	8.32	22037	-0.000	-0.074	0.106	0.154	202.114846	-42.795539	-1997.12	612.71
4	GUIDE	1021720872	9.78	21990	0.063	-0.126	0.166	0.292	200.668338	-42.835886	1140.98	-1570.15
5	GUIDE	1021722032	10.12	22011	-0.069	-0.003	0.186	0.294	200.643231	-42.613906	719.02	-2252.01
6	GUIDE	1021721504	9.55	21979	0.075	0.109	0.148	0.323	201.182768	-43.000443	407.30	-284.78
7	GUIDE	1021721672	9.54	22037	-0.059	0.091	0.099	0.160	201.740358	-43.079729	-591.80	827.01

2.4 Star Slots

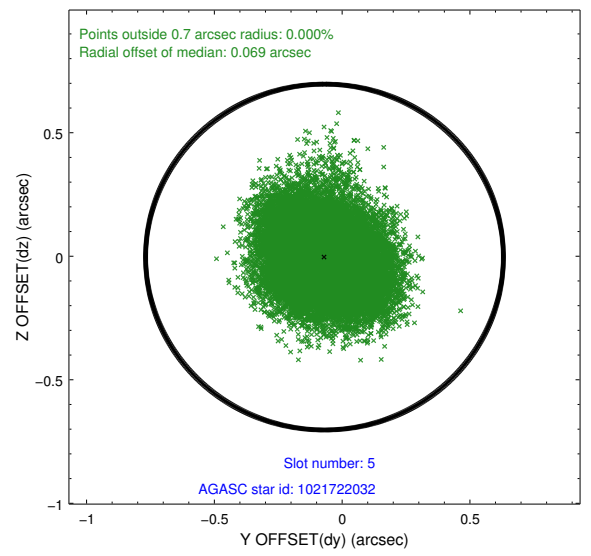
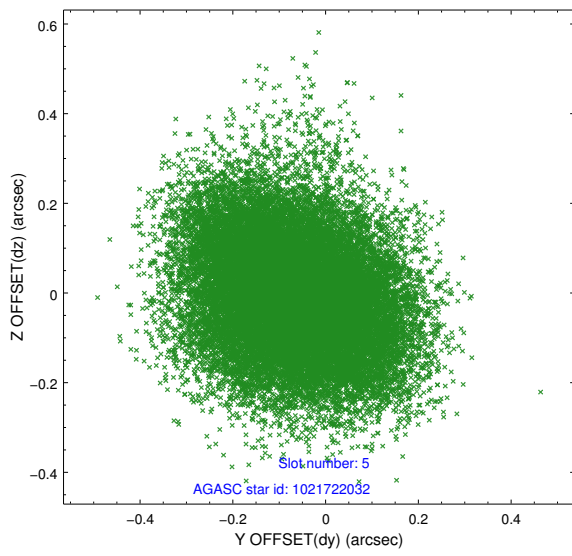
2.4.1 Slot 3



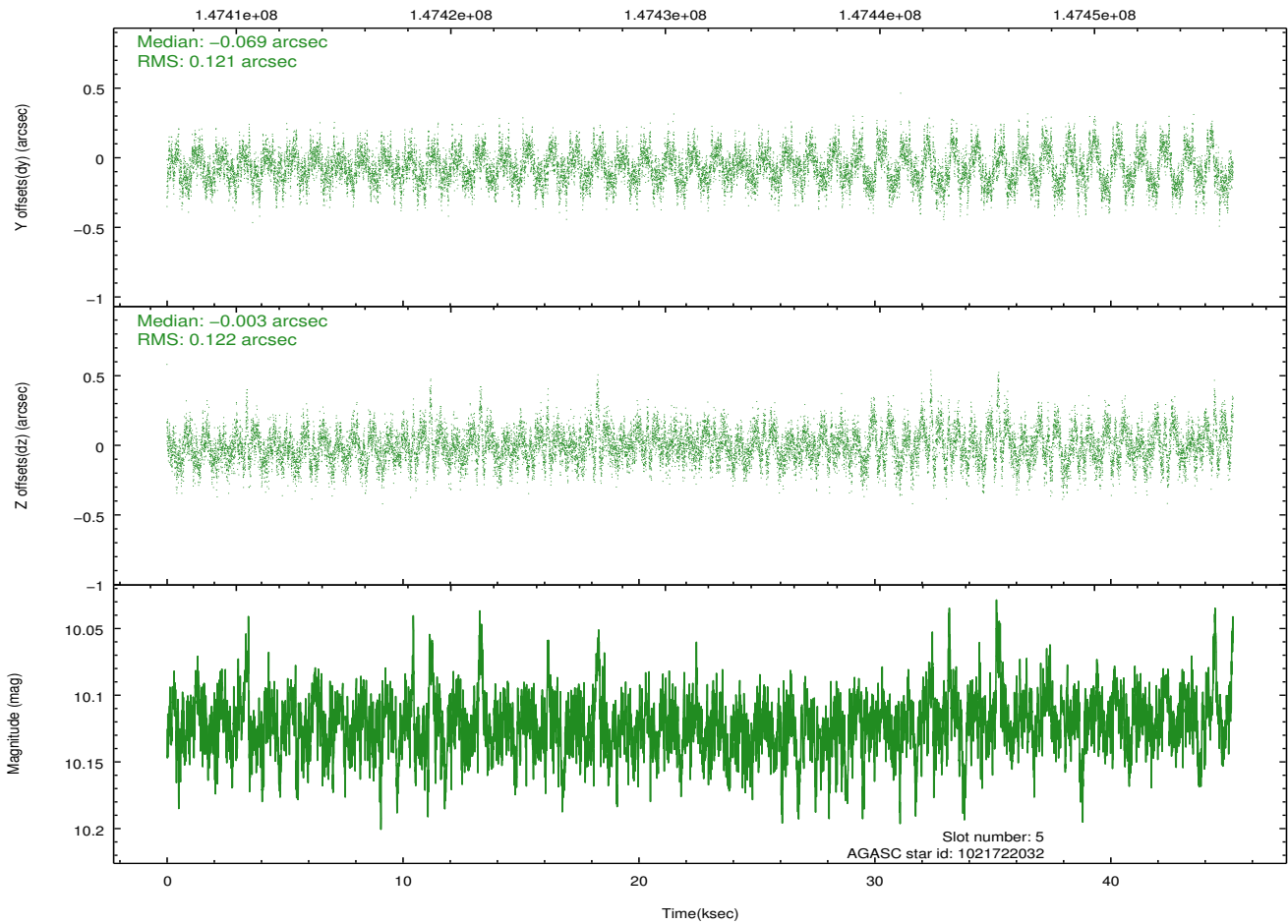
2.4.2 Slot 4



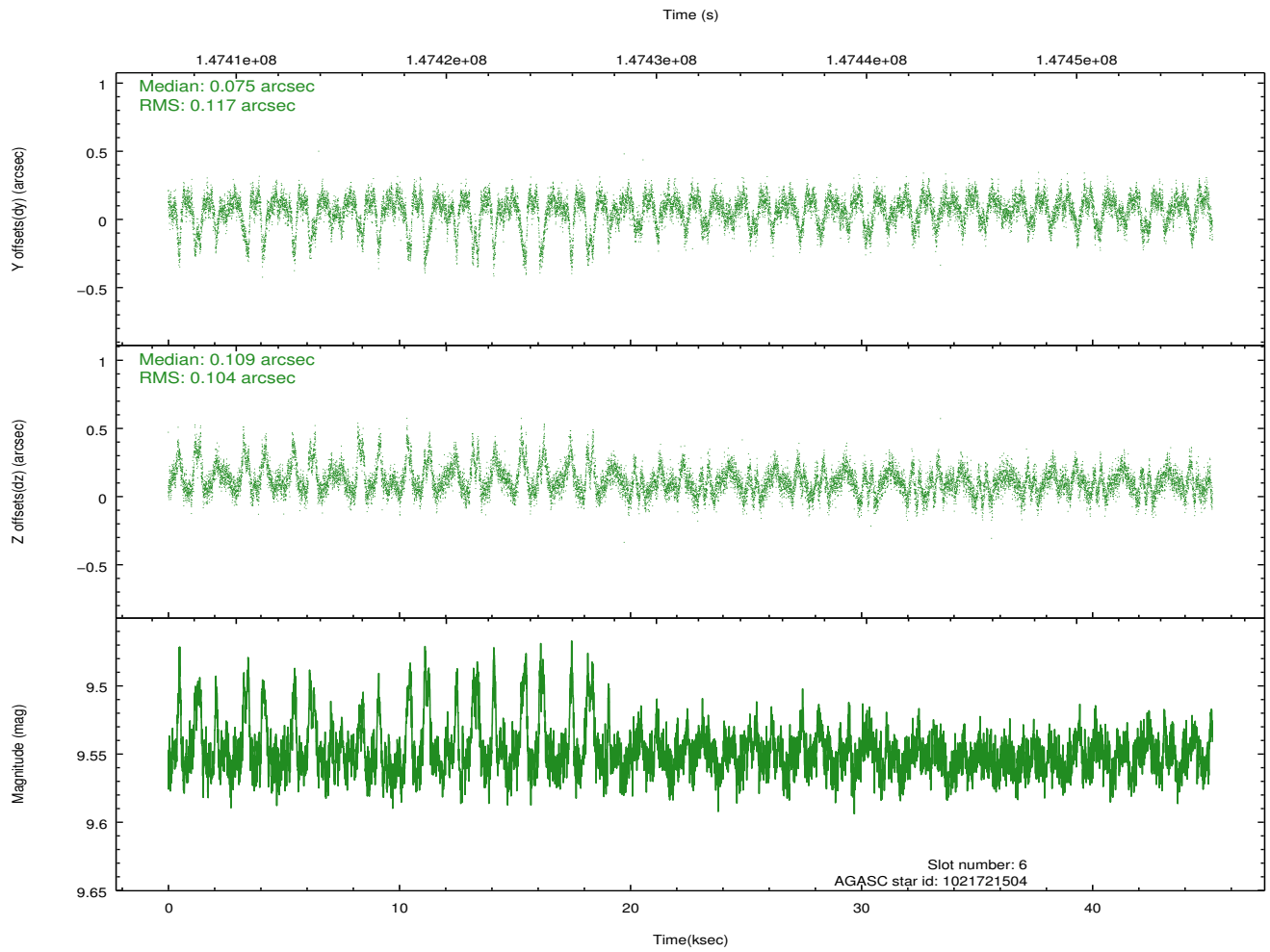
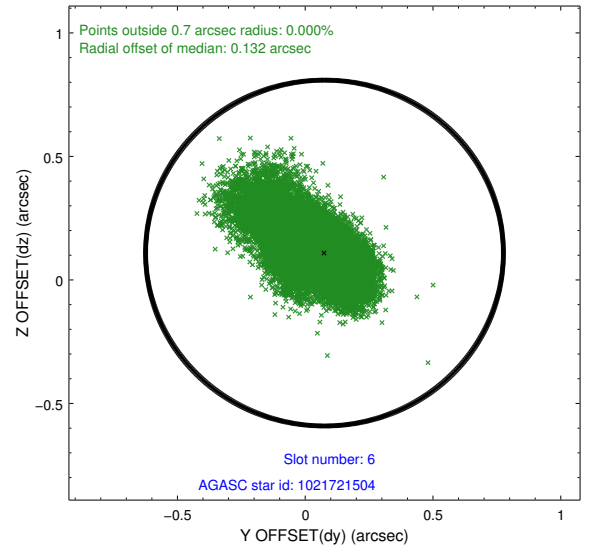
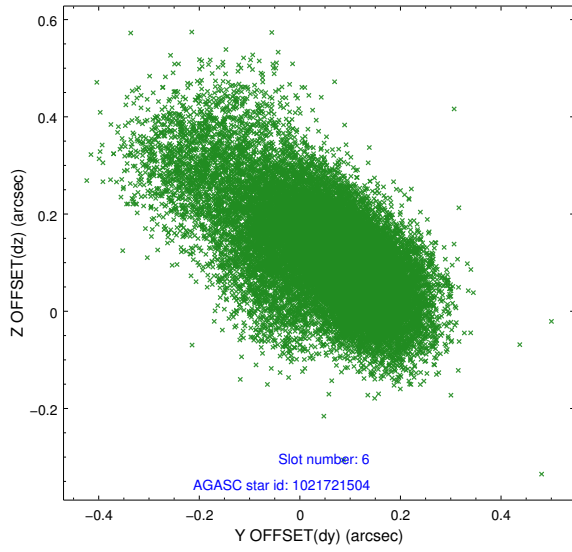
2.4.3 Slot 5



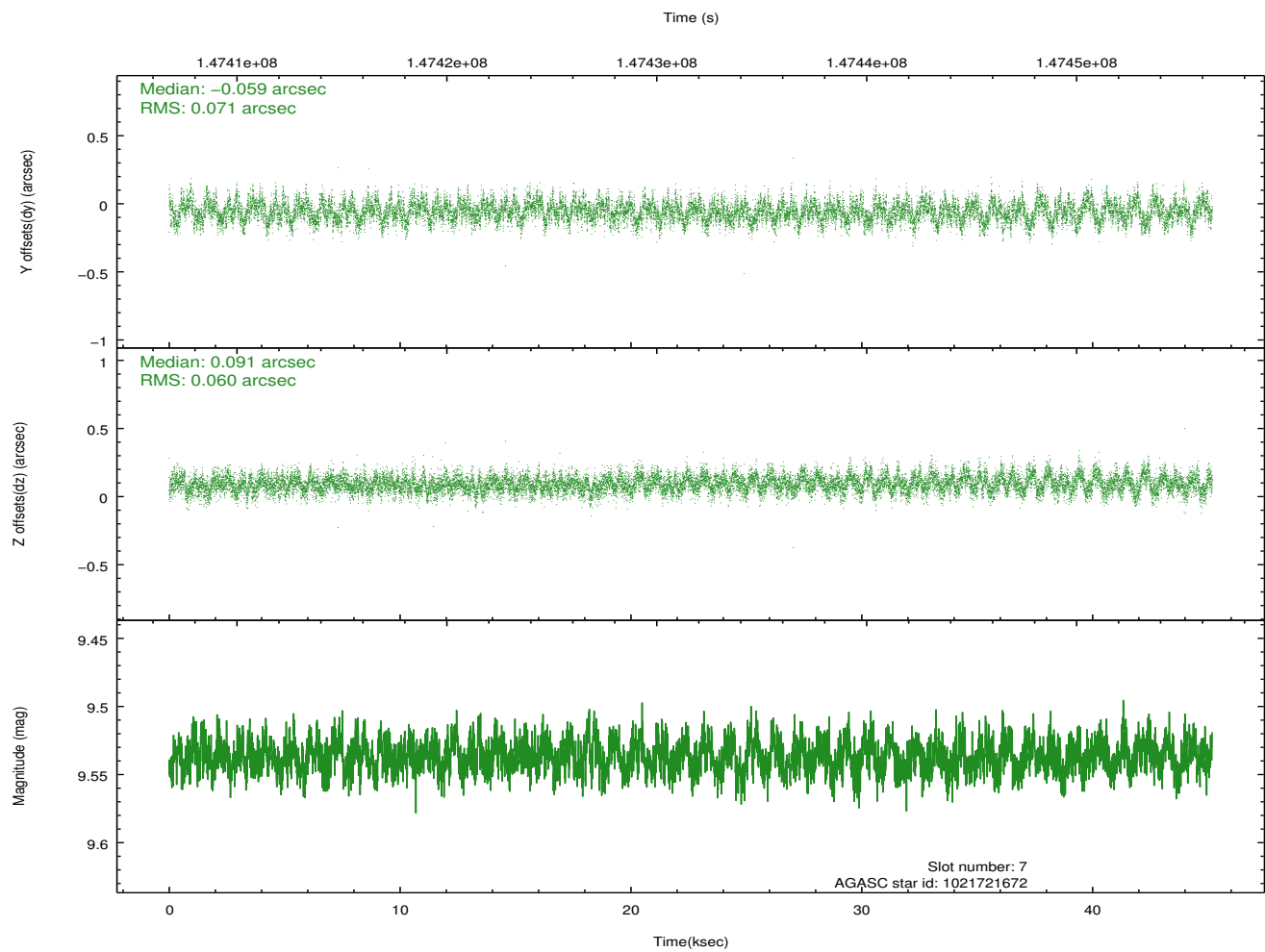
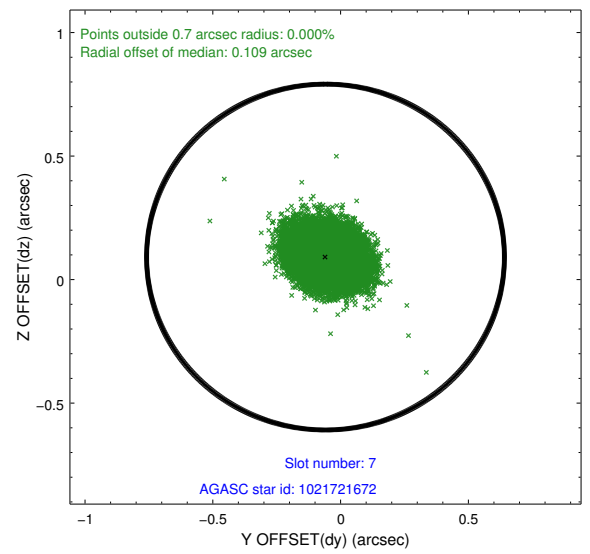
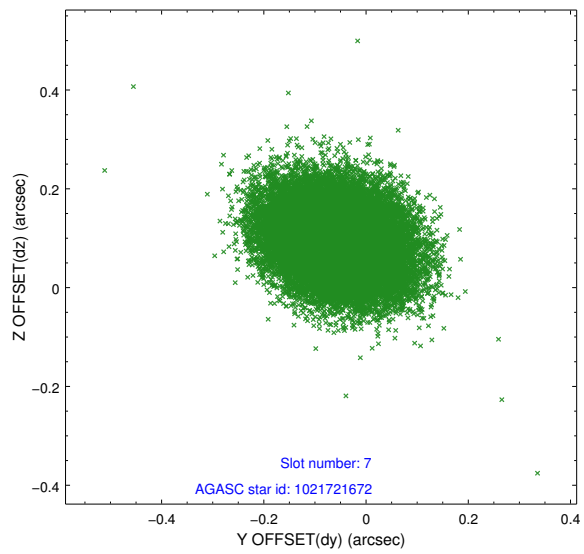
Time (s)



2.4.4 Slot 6

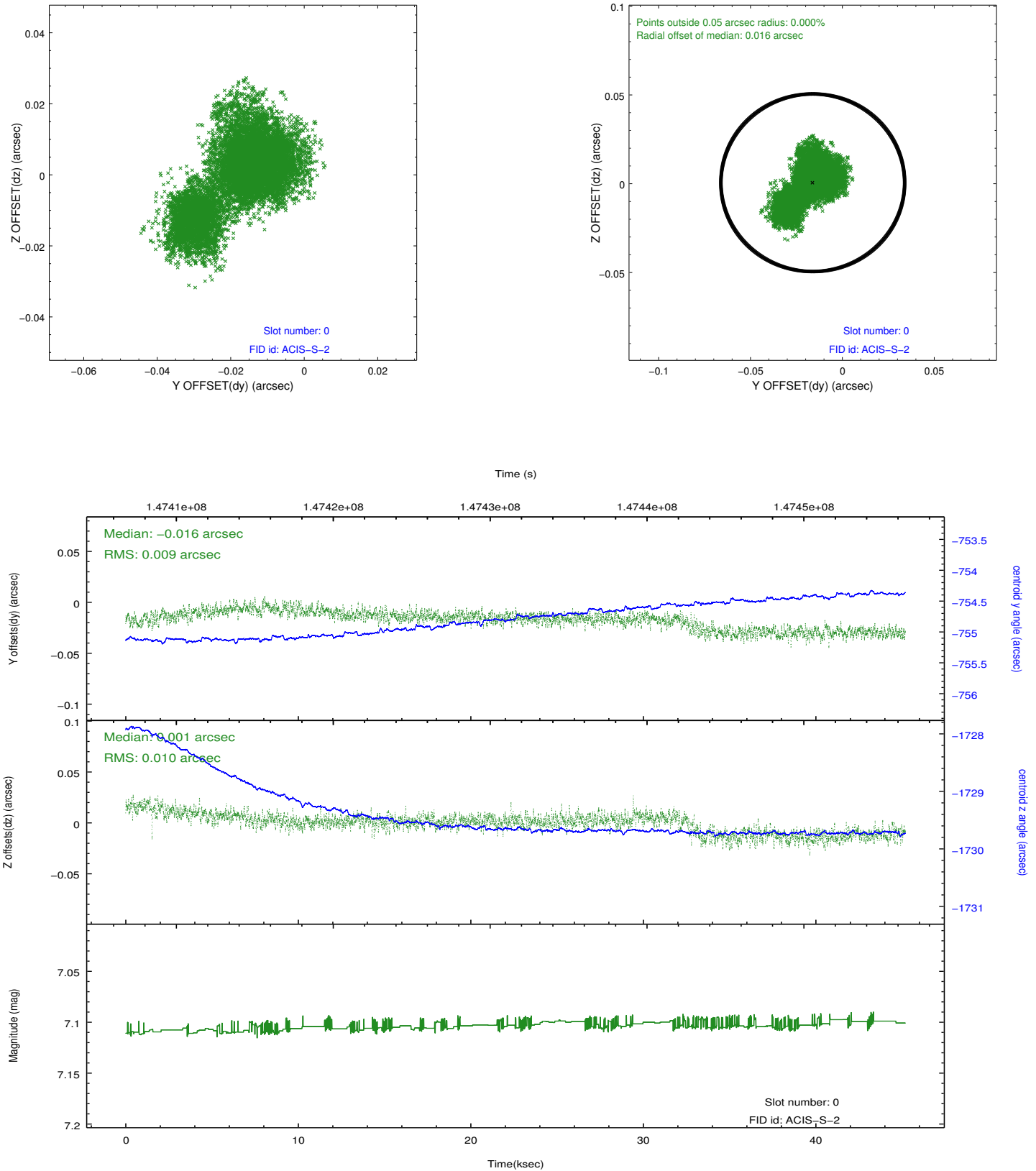


2.4.5 Slot 7

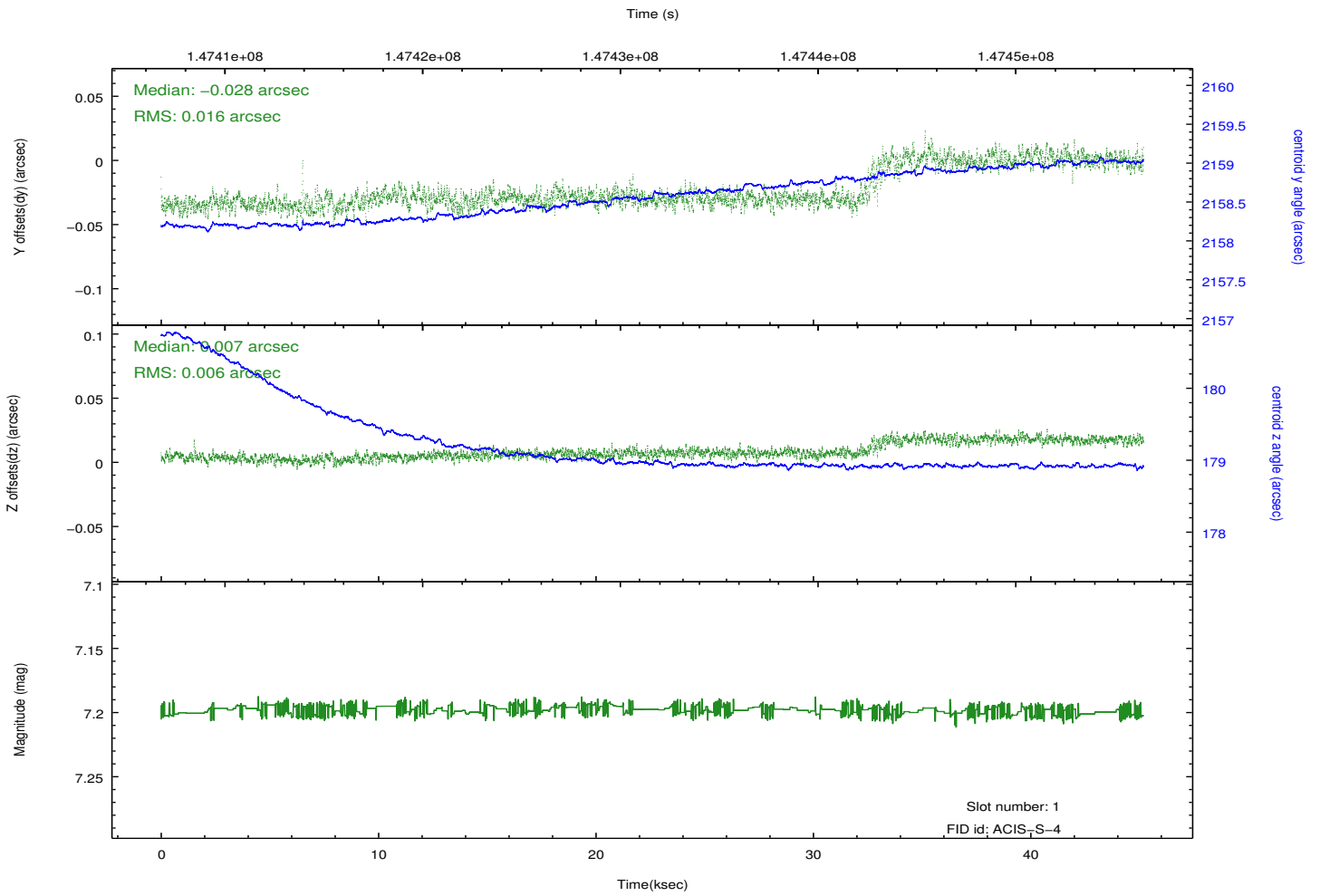
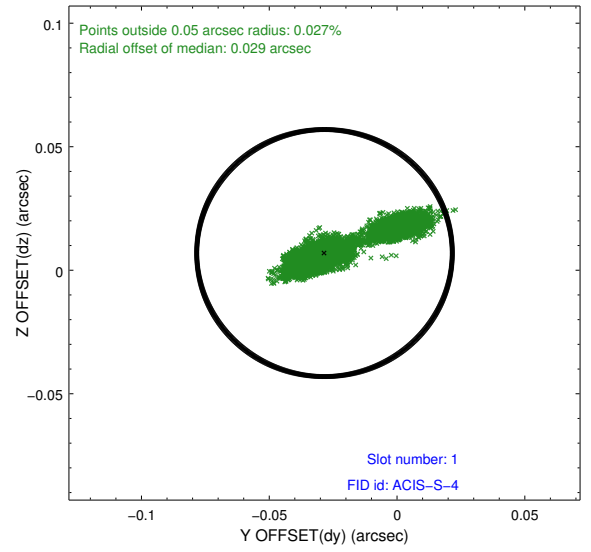
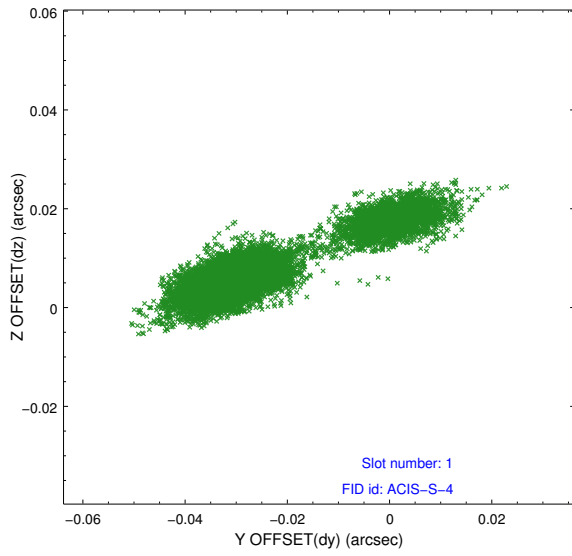


2.5 FID Slots

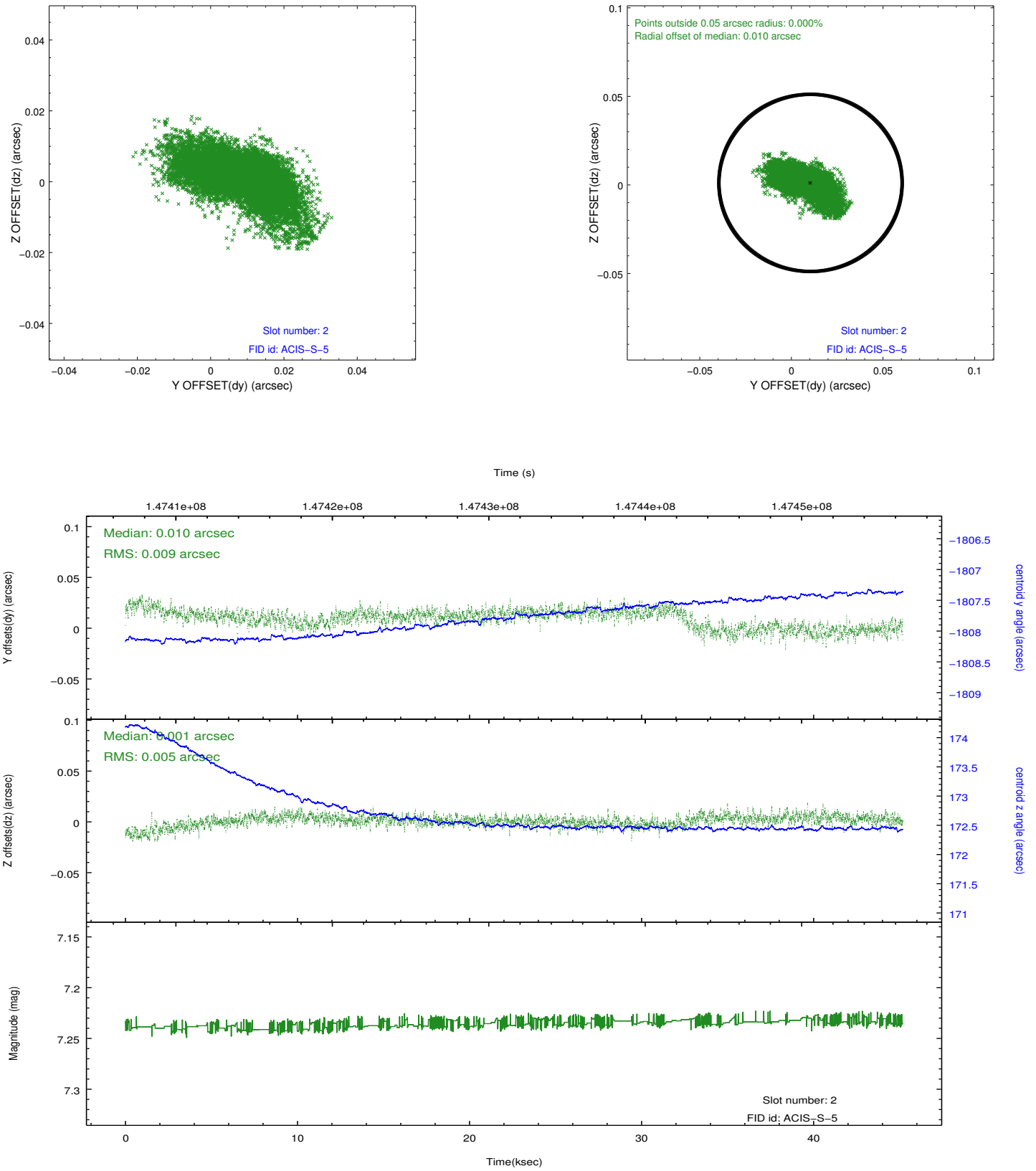
2.5.1 Slot 0



2.5.2 Slot 1



2.5.3 Slot 2



A Summary

A.1 Status

V&V Scientist	Jen Lauer
V&V Date (YYYY-MM-DD)	2012.10.22
V&V Edition	1
V&V Disposition and Status	OK
V&V Charge Time	45.182

A.2 Comments

Roll constraint met. The primary source has some pile-up.