

V&V Reference Report

L2 ASCDS Version : 8.4.5

Observation 3008 - L2 Version 3
Chandra X-Ray Center

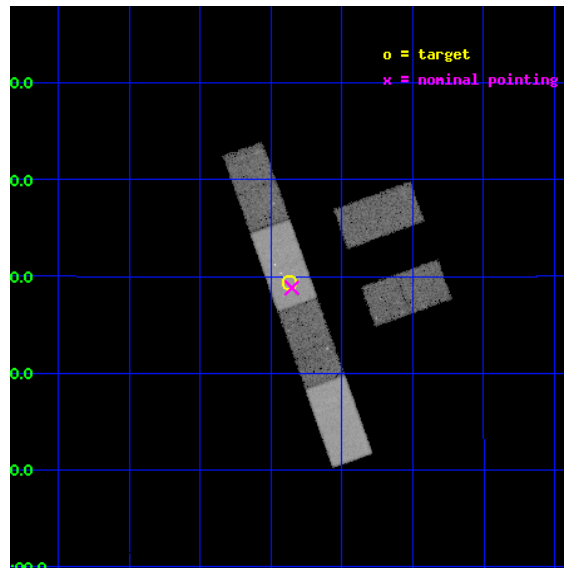
L2 Processing Date : Oct 9 2012

Contents

1	Front	2
2	OBI	3
2.1	OBI	3
2.1.1	Images	3
2.1.2	Bias	3
2.1.3	Parameters	4
2.1.4	Events	4
2.2	Compared Parameters	5
2.3	Aspect	6
2.4	Star Slots	9
2.4.1	Slot 3	9
2.4.2	Slot 4	10
2.4.3	Slot 5	11
2.4.4	Slot 6	12
2.4.5	Slot 7	13
2.5	FID Slots	14
2.5.1	Slot 0	14
2.5.2	Slot 1	15
2.5.3	Slot 2	16
A	Summary	17
A.1	Status	17
A.2	Comments	17

1 Front

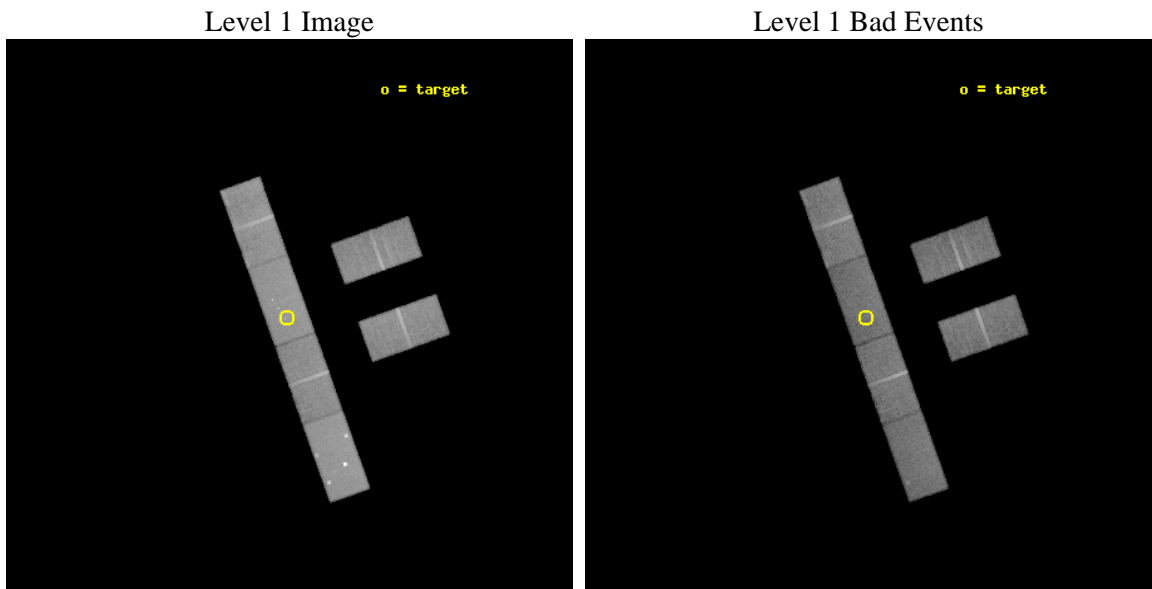
seq_num	700447	Sequence number
obs_id	3008	Observation id
title	NGC4698: A SEYFERT-2 GALAXY WITH NO OBSCURING COLUMN	Proposal titl
observer	Dr Ioannis Georgantopoulos	Principal investigator
object	NGC4698	Source name
dtycycle	0	
cycle	P	events from which exps? Prim/Second/Both
ra_targ	192.092917	Observer's specified target RA [deg]
dec_targ	8.488889	Observer's specified target Dec [deg]
ra_nom	192.08805318174	Nominal RA [deg]
dec_nom	8.4804954366952	Nominal Dec [deg]
roll_nom	250.28543796553	Nominal Roll [deg]
revision	3	Processing version of data
ontime	30401.959241092	Sum of GTIs [s]
livetime	29724.246422656	Livetime [s]
ontime2	30403.800201356	Sum of GTIs [s]
ontime3	30366.979919583	Sum of GTIs [s]
ontime5	30401.959181309	Sum of GTIs [s]
ontime6	30401.959181309	Sum of GTIs [s]
ontime7	30401.959241092	Sum of GTIs [s]
ontime8	30403.800201356	Sum of GTIs [s]
l2events	162496	Number of level 2 events



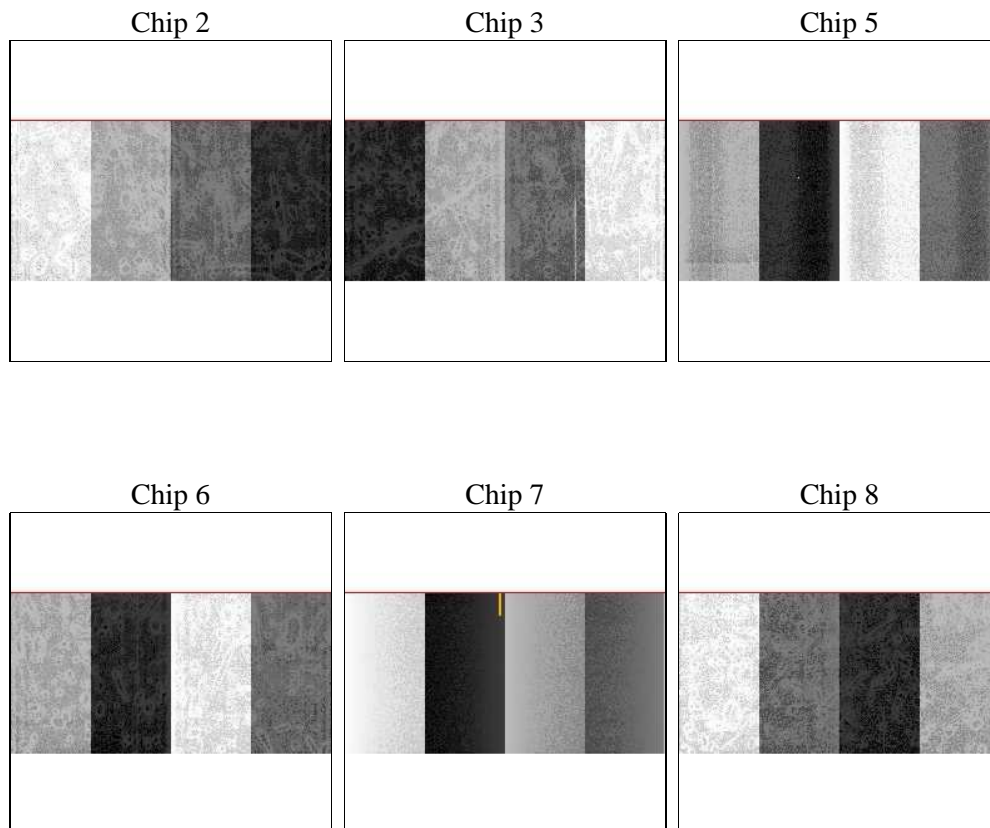
2 OBI

2.1 OBI

2.1.1 Images



2.1.2 Bias



2.1.3 Parameters

obi_num	0	Obi number	sched_exp_time	30000.000000	[s] Scheduled observation exposure time
ascdsver	8.4.5	Processing system revision	ontime	30401.959241092	Sum of GTIs [s]
caldbver	4.5.2	 	ontime2	30403.800201356	Sum of GTIs [s]
date	2012-10-09T04:52:35	Date and time of file creation	ontime3	30366.979919583	Sum of GTIs [s]
revision	3	Processing version of data	ontime5	30401.959181309	Sum of GTIs [s]
			ontime6	30401.959181309	Sum of GTIs [s]
			ontime7	30401.959241092	Sum of GTIs [s]
			ontime8	30403.800201356	Sum of GTIs [s]
			l1events	751756	Number of level 1 events

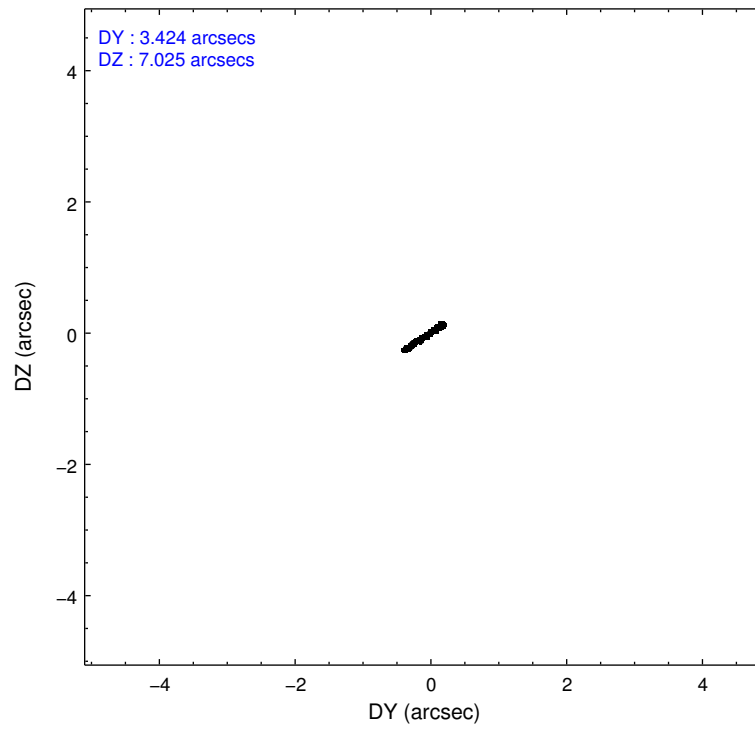
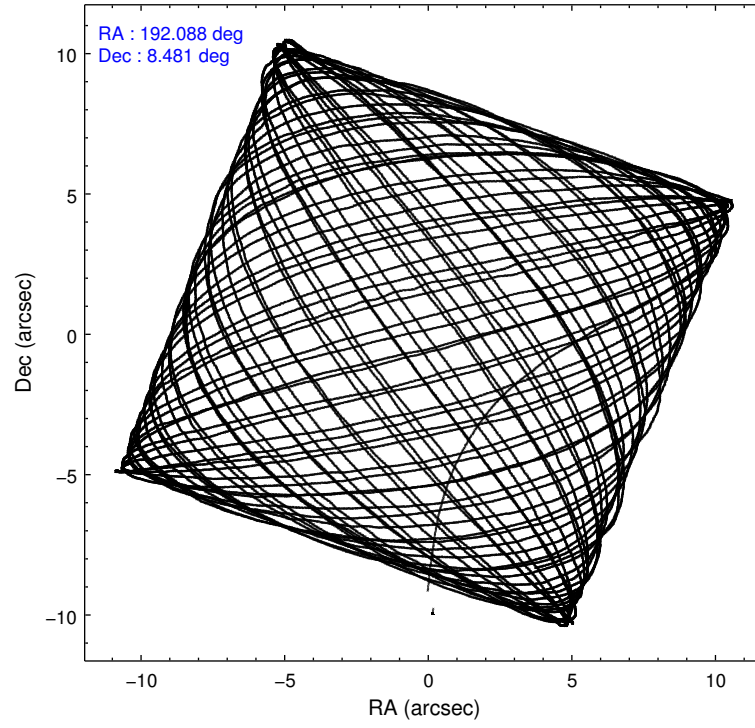
2.1.4 Events

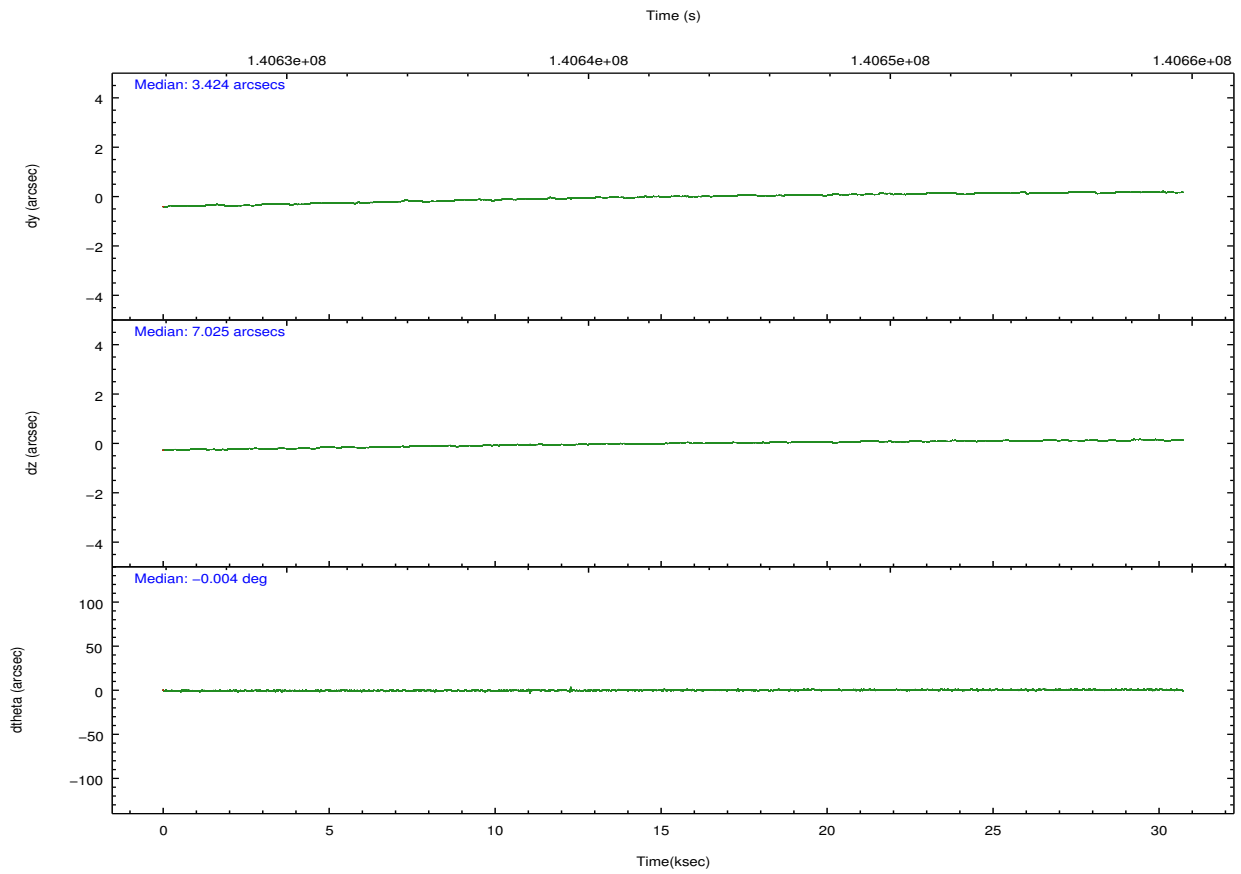
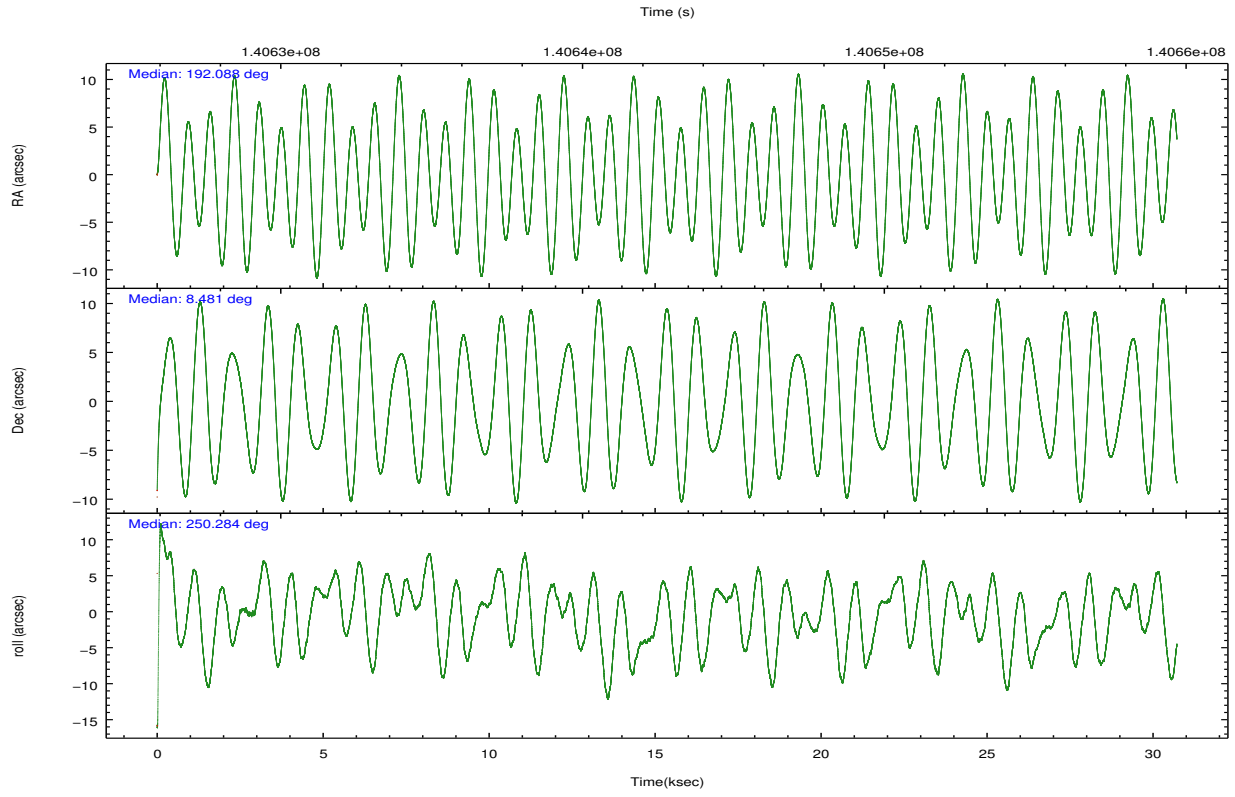
	ccd 2	ccd 3	ccd 5	ccd 6	ccd 7	ccd 8		ccd 2	ccd 3	ccd 5	ccd 6	ccd 7	ccd 8
level 1 events	109601	104161	163429	106904	134570	133091	grade 0 events	5188	4757	27335	4908	6905	8250
rejected events	97038	92422	77416	94578	75849	106852		4%	4%	16%	4%	5%	6%
rejected %	88%	88%	47%	88%	56%	80%	grade 1 events	31	33	434	32	130	57
								0%	0%	0%	0%	0%	0%
							grade 2 events	2538	2232	18756	2278	11901	5504
								2%	2%	11%	2%	8%	4%
							grade 3 events	1385	1326	3498	1432	5694	3021
								1%	1%	2%	1%	4%	2%
							grade 4 events	1379	1345	3326	1376	5731	2820
								1%	1%	2%	1%	4%	2%
							grade 5 events	3668	3975	11480	4419	12709	5381
								3%	3%	7%	4%	9%	4%
							grade 6 events	2074	2088	33102	2333	28509	6644
								1%	2%	20%	2%	21%	4%
							grade 7 events	93338	88405	65498	90126	62991	101414
								85%	84%	40%	84%	46%	76%

2.2 Compared Parameters

Parameter	Planned	Actual	Parameter	Planned	Actual
Instrument	ACIS	ACIS	Obspar format version number	7	7
Detector	ACIS-235678	ACIS-235678	Obspar file type	PREDICTED	ACTUAL
Grating	NONE	NONE	Obspar update status	NONE	UPDATED
Data mode	FAINT	FAINT	Number of optional ACIS chips dropped	0	0
Observation mode	POINTING	POINTING	On-chip summing requested	N	N
[deg] Pointing RA	192.082772	192.0880531817428	Subarray requested	CUSTOM	1/2
[deg] Pointing Dec	8.507225	8.4804954366952	Subarray start row	257	257
[deg] Pointing Roll	250.129599	250.2854379655321	Subarray row count	512	512
[mm] SIM focus pos	-0.684267	-0.6828225247311905	Alternating exposures requested	N	N
[mm] SIM defocus	0	0.001444936568705701	[s] Primary exposure time	0.000000	1.8
[mm] SIM translation stage pos	-190.132523	-190.1400660498719			
[mm] SIM translation stage offset	0	0.00754346686406393			
[s] Observation start time (MET)	140628160.184000	140626935.73309			
Observation start date	2002-06-16T15:21:36	2002-06-16T15:02:15			
[s] Observation end time (MET)	140658160.184000	140658799.9094			
Observation end date	2002-06-16T23:41:36	2002-06-16T23:53:19			
Read mode	TIMED	TIMED			

2.3 Aspect



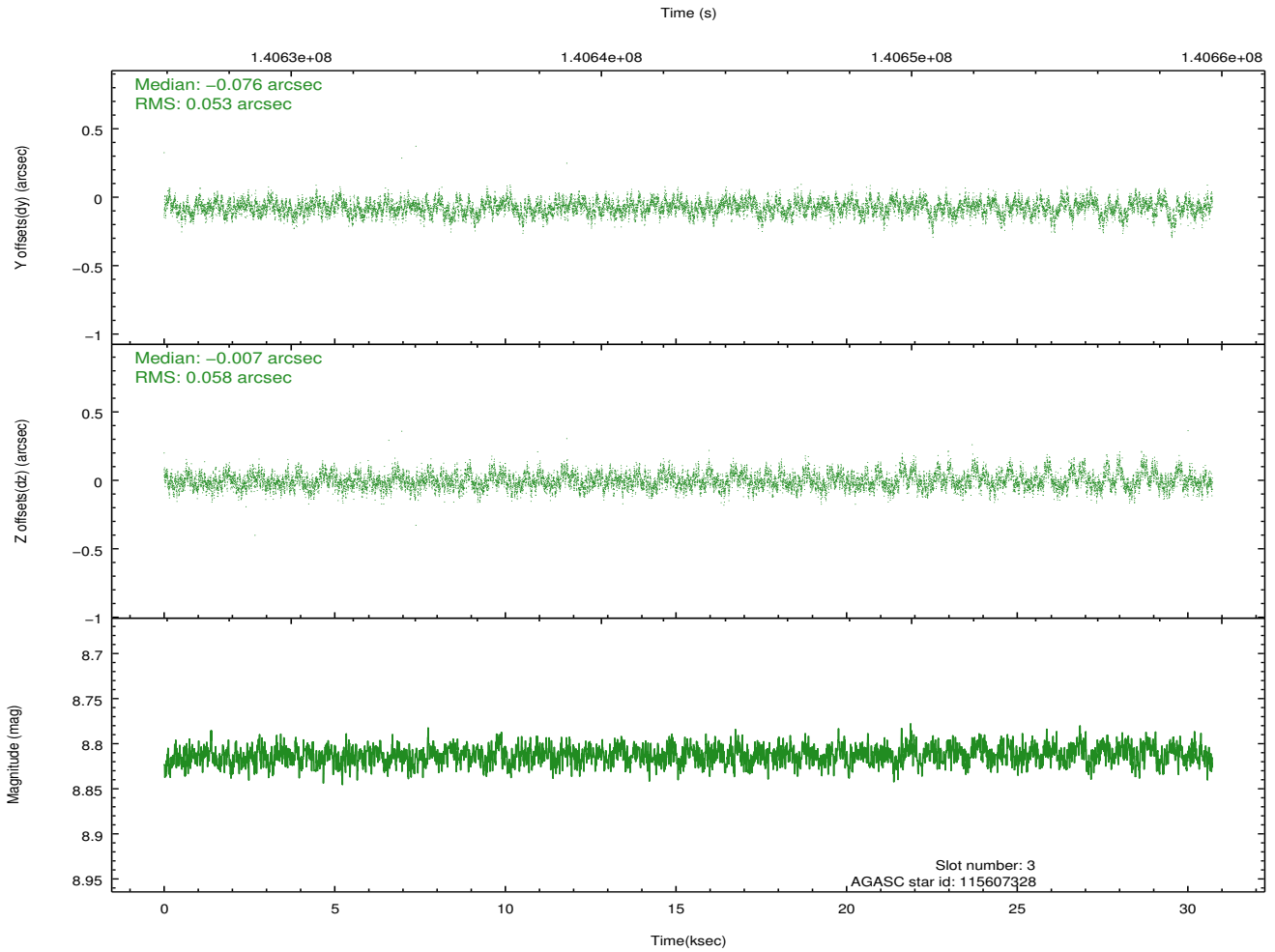
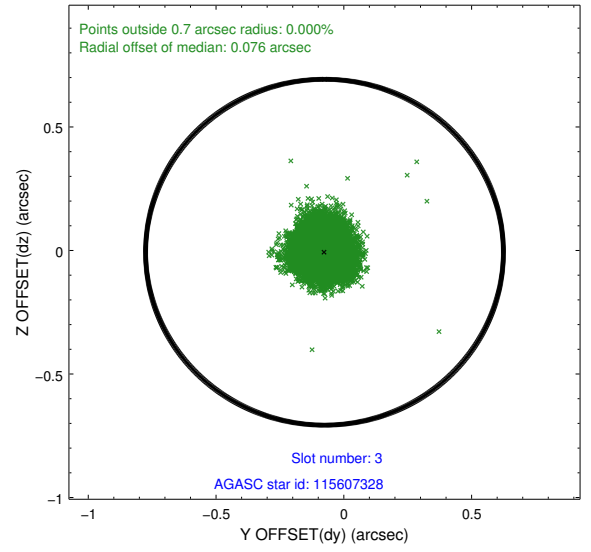
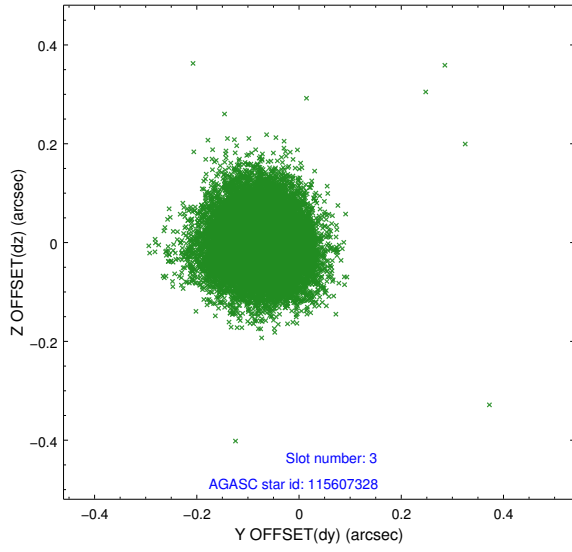


Slot Statistics

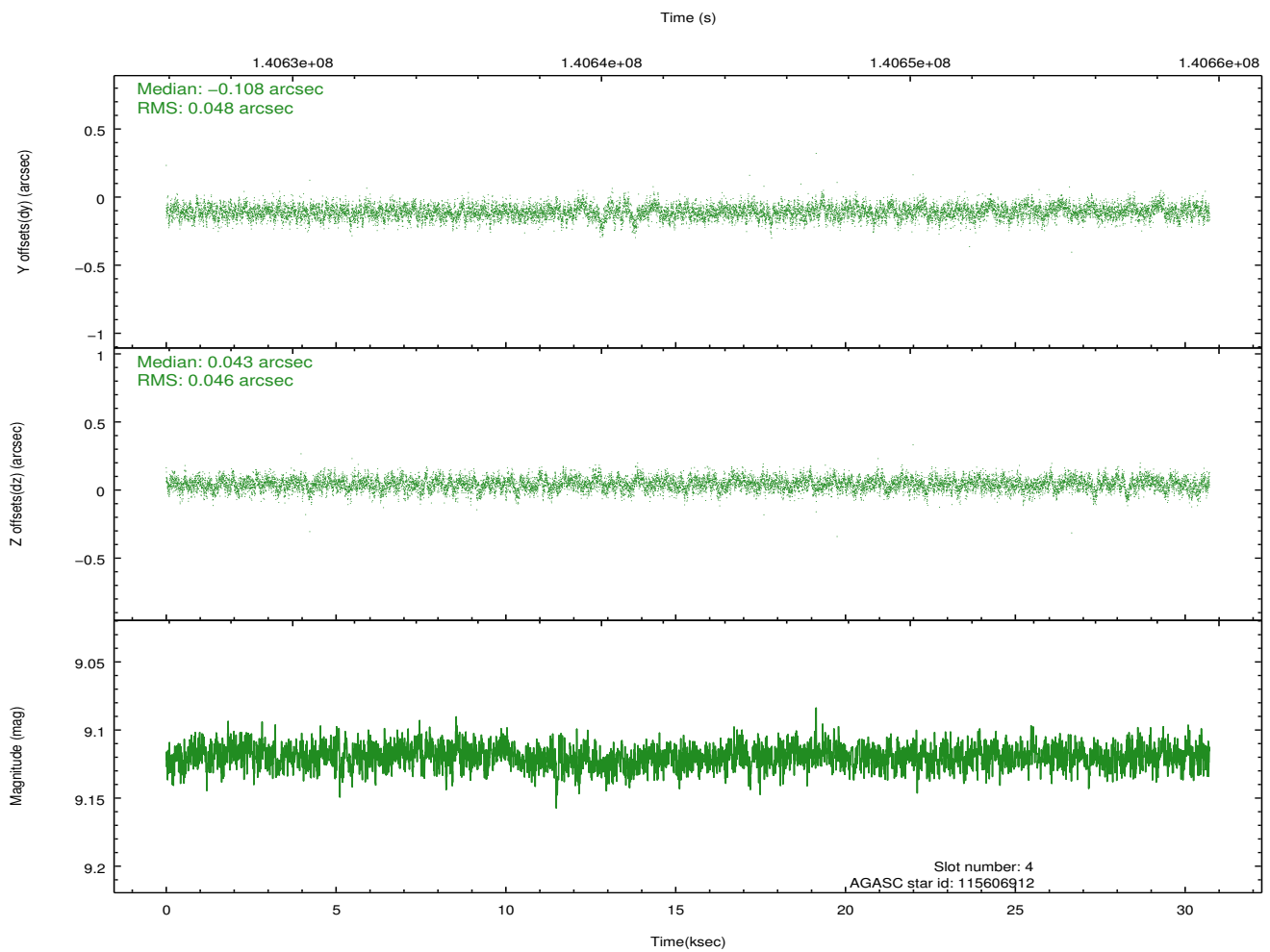
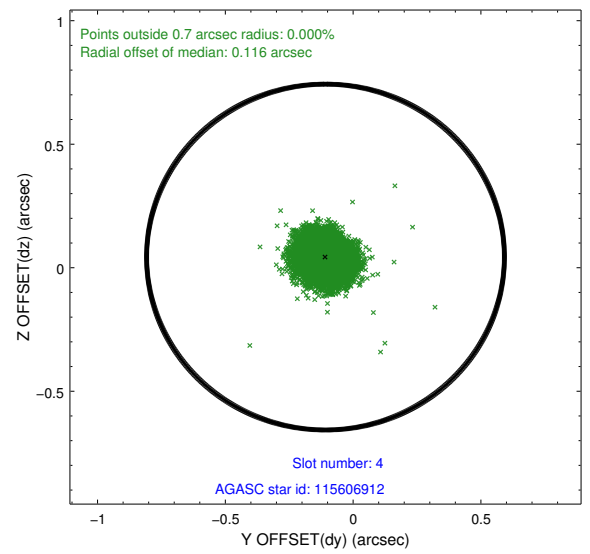
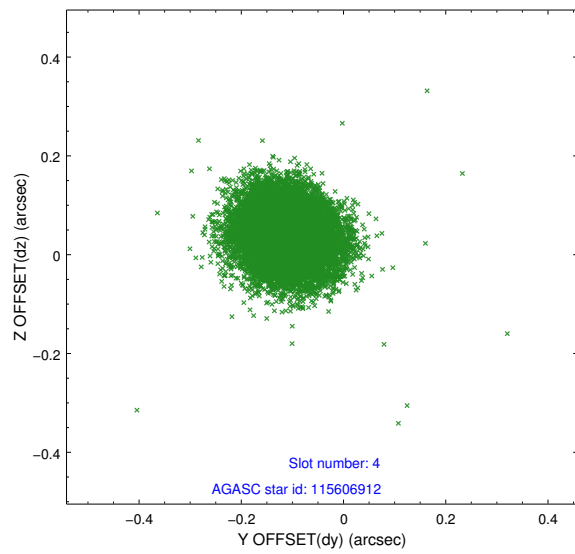
slot	status	id	mag	n_pts	med_dy	med_dz	dr1	dr2	ra	dec	mean_y	mean_z
0	FID	ACIS-S-2	7.11	7492	-0.010	-0.004	0.006	0.010	0.000000	0.000000	-756.03	-1728.18
1	FID	ACIS-S-4	7.20	7492	-0.006	0.003	0.006	0.010	0.000000	0.000000	2157.21	180.26
2	FID	ACIS-S-6	7.36	7492	-0.011	0.008	0.007	0.012	0.000000	0.000000	406.02	817.73
3	GUIDE	115607328	8.81	14973	-0.076	-0.007	0.084	0.134	191.828983	9.014364	-1410.20	-1469.03
4	GUIDE	115606912	9.12	14979	-0.108	0.043	0.070	0.116	192.287935	8.961548	-1786.11	130.47
5	GUIDE	115609808	9.13	14981	0.167	-0.174	0.101	0.160	191.578733	8.786104	-335.25	-2027.90
6	GUIDE	115608584	9.20	14982	-0.063	0.185	0.091	0.142	192.676908	8.875074	-1964.97	1537.27
7	GUIDE	115612496	10.30	14976	0.081	-0.054	0.151	0.249	191.721157	8.378538	873.35	-1053.53

2.4 Star Slots

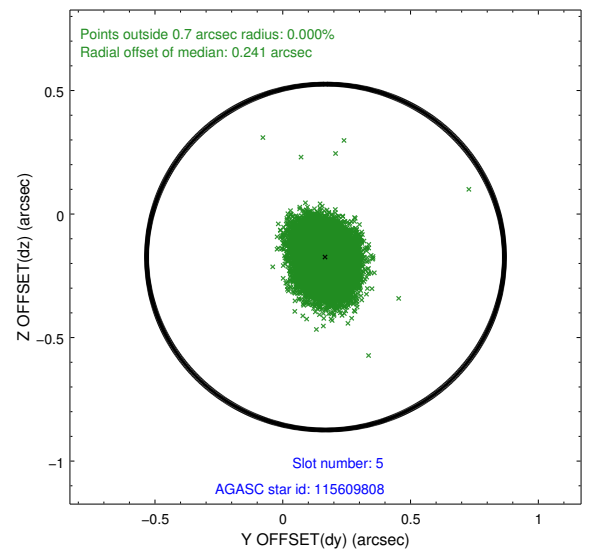
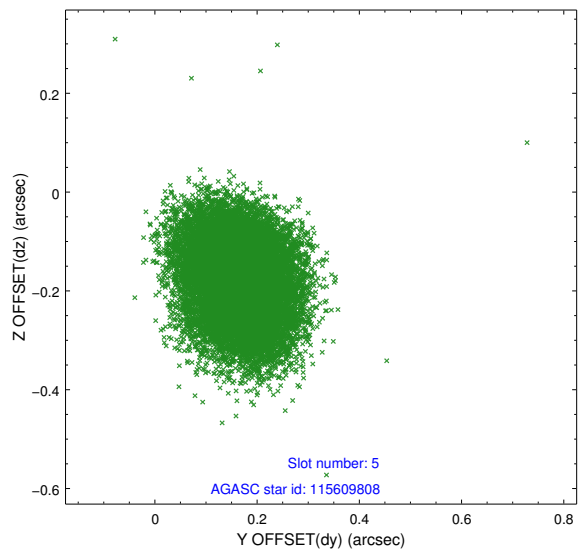
2.4.1 Slot 3



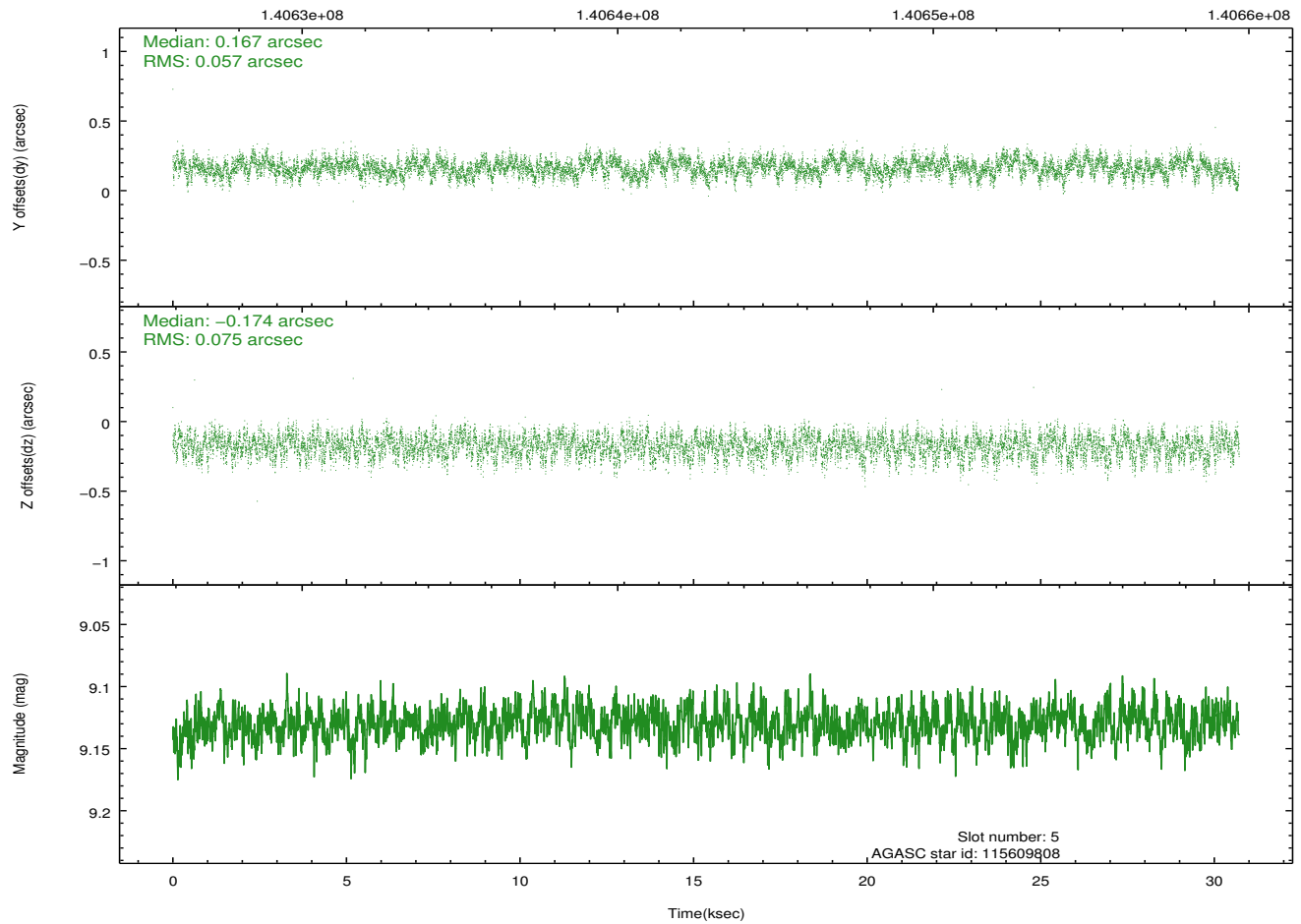
2.4.2 Slot 4



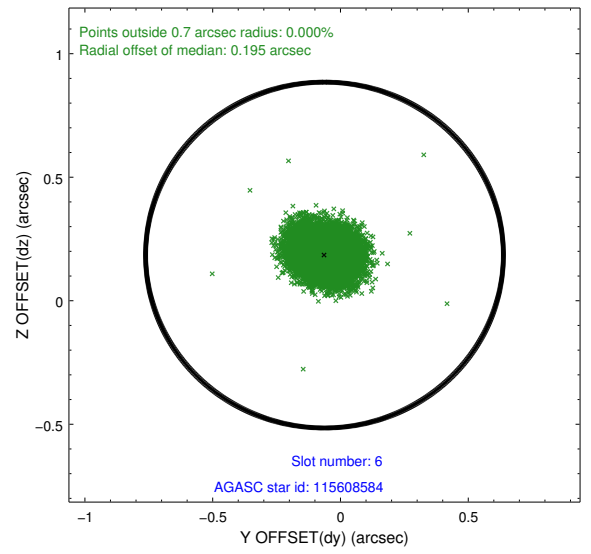
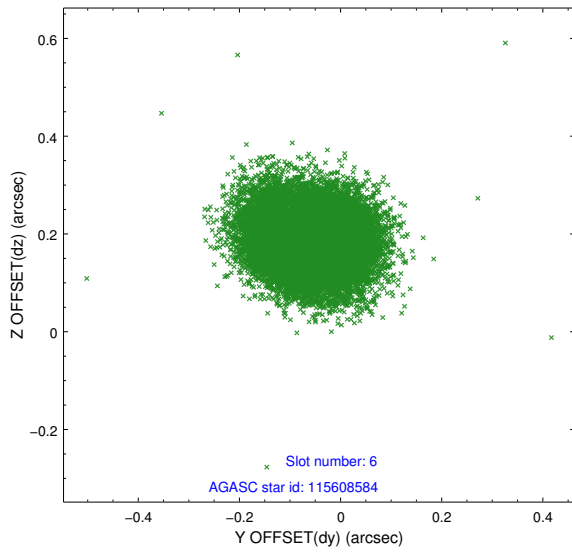
2.4.3 Slot 5



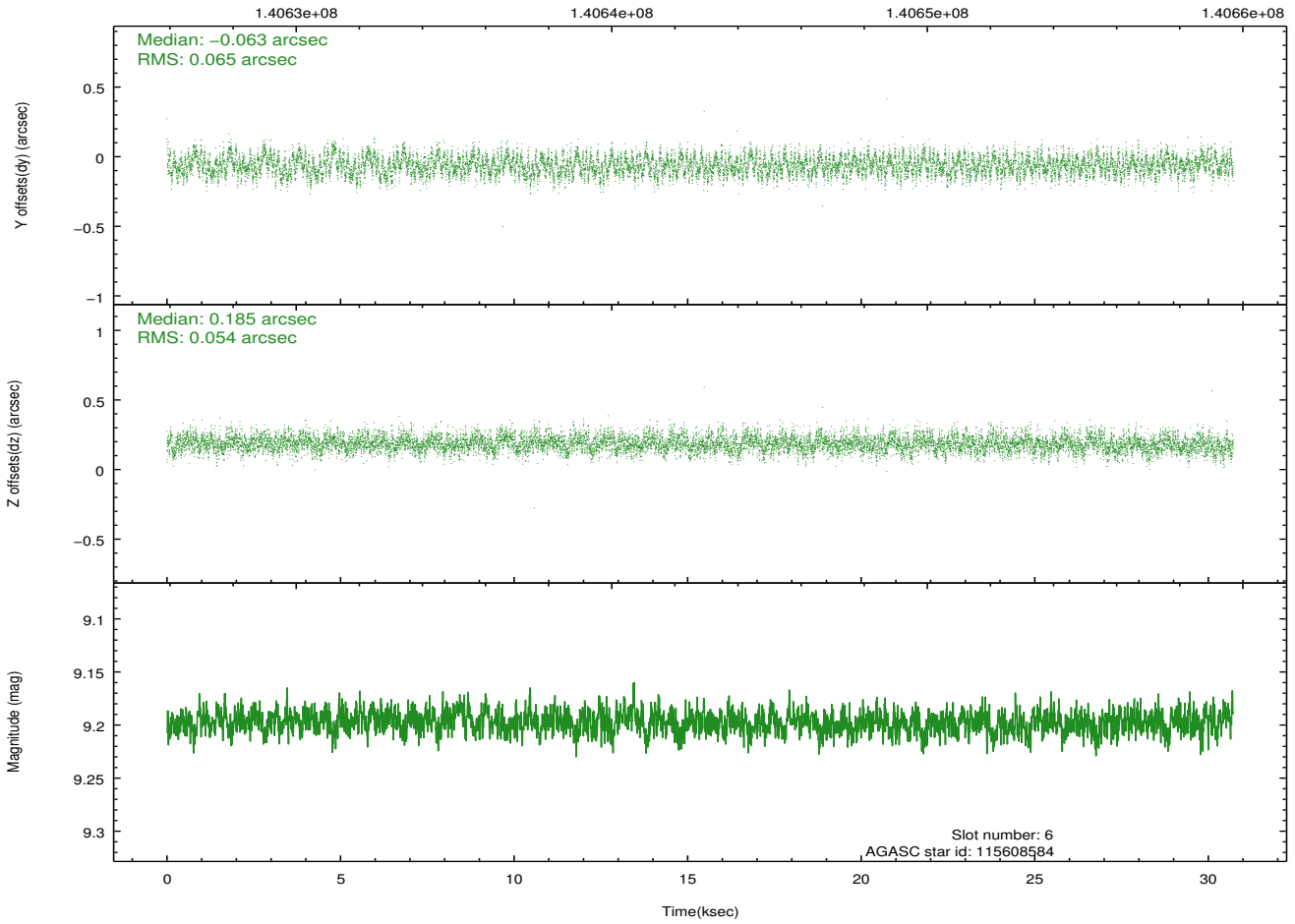
Time (s)



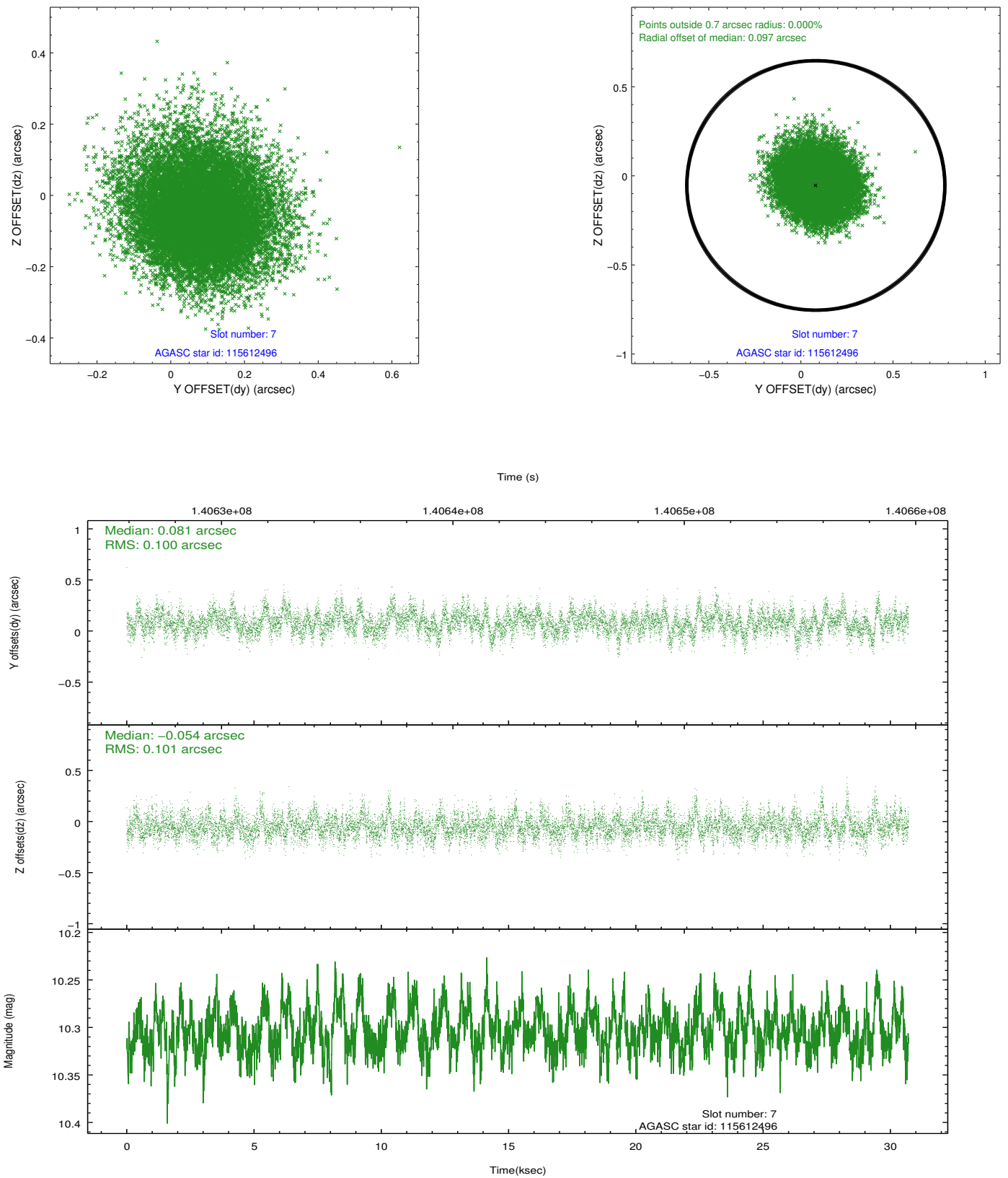
2.4.4 Slot 6



Time (s)

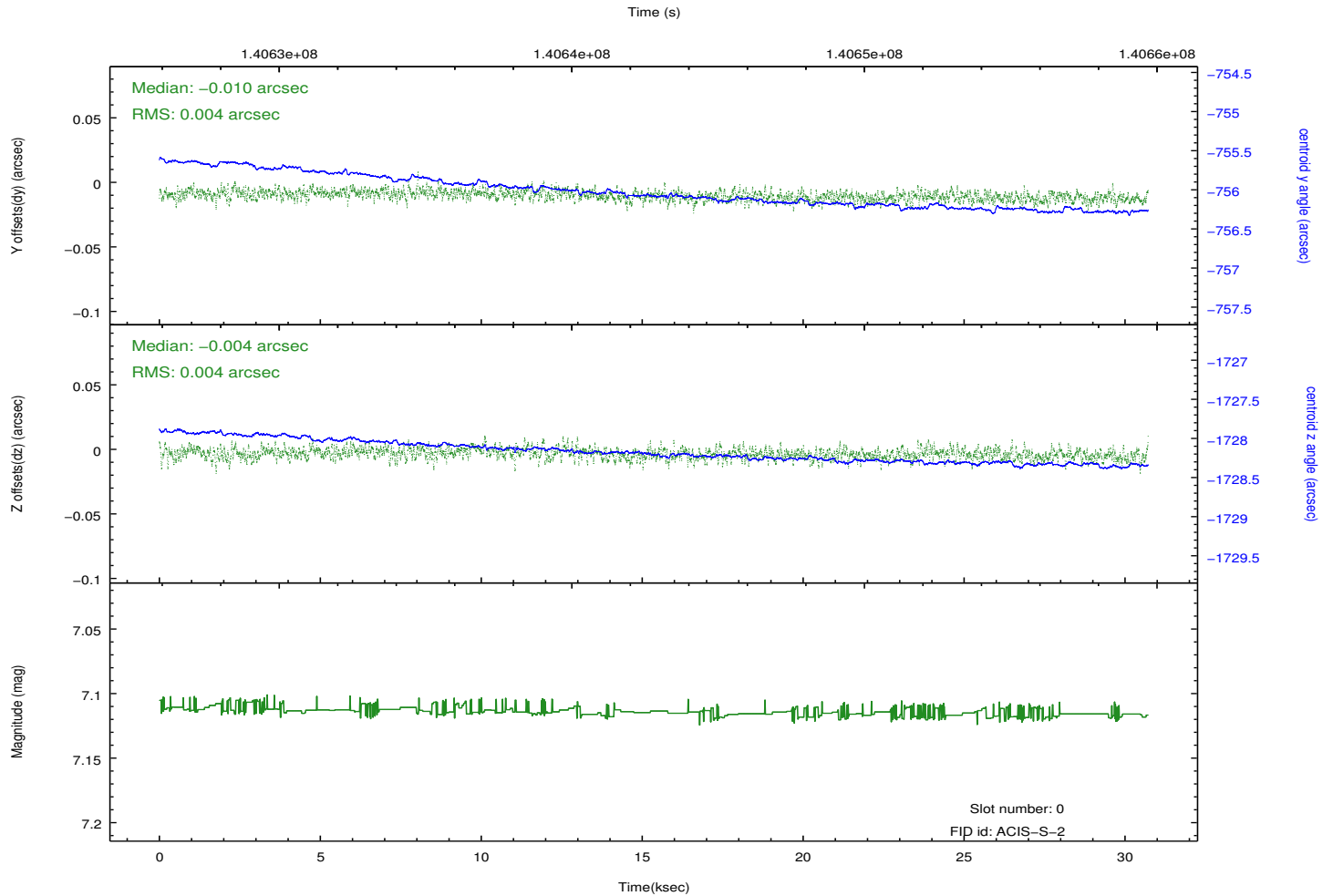
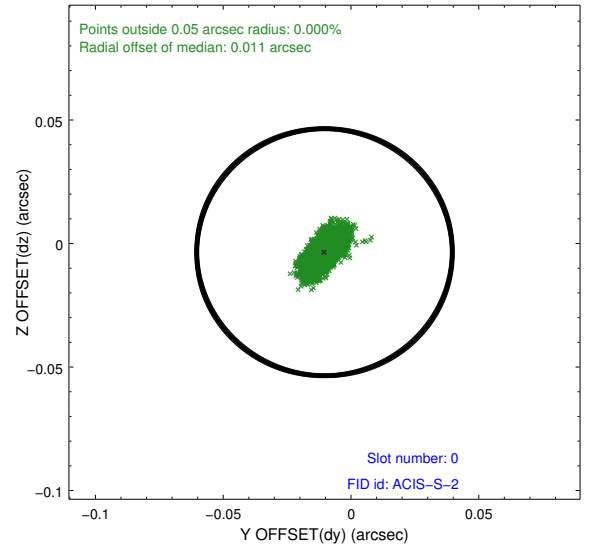
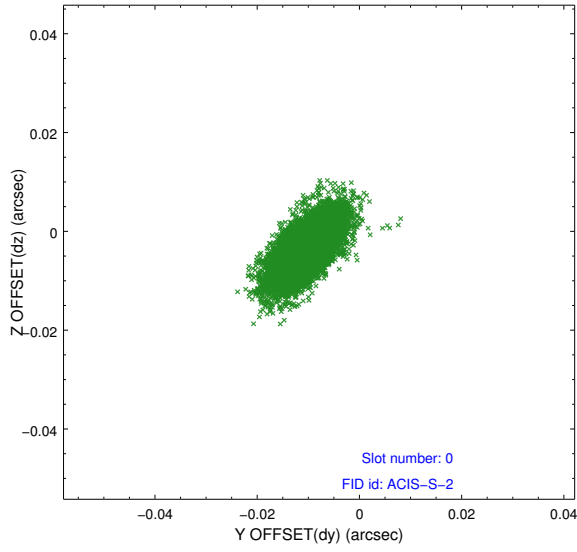


2.4.5 Slot 7

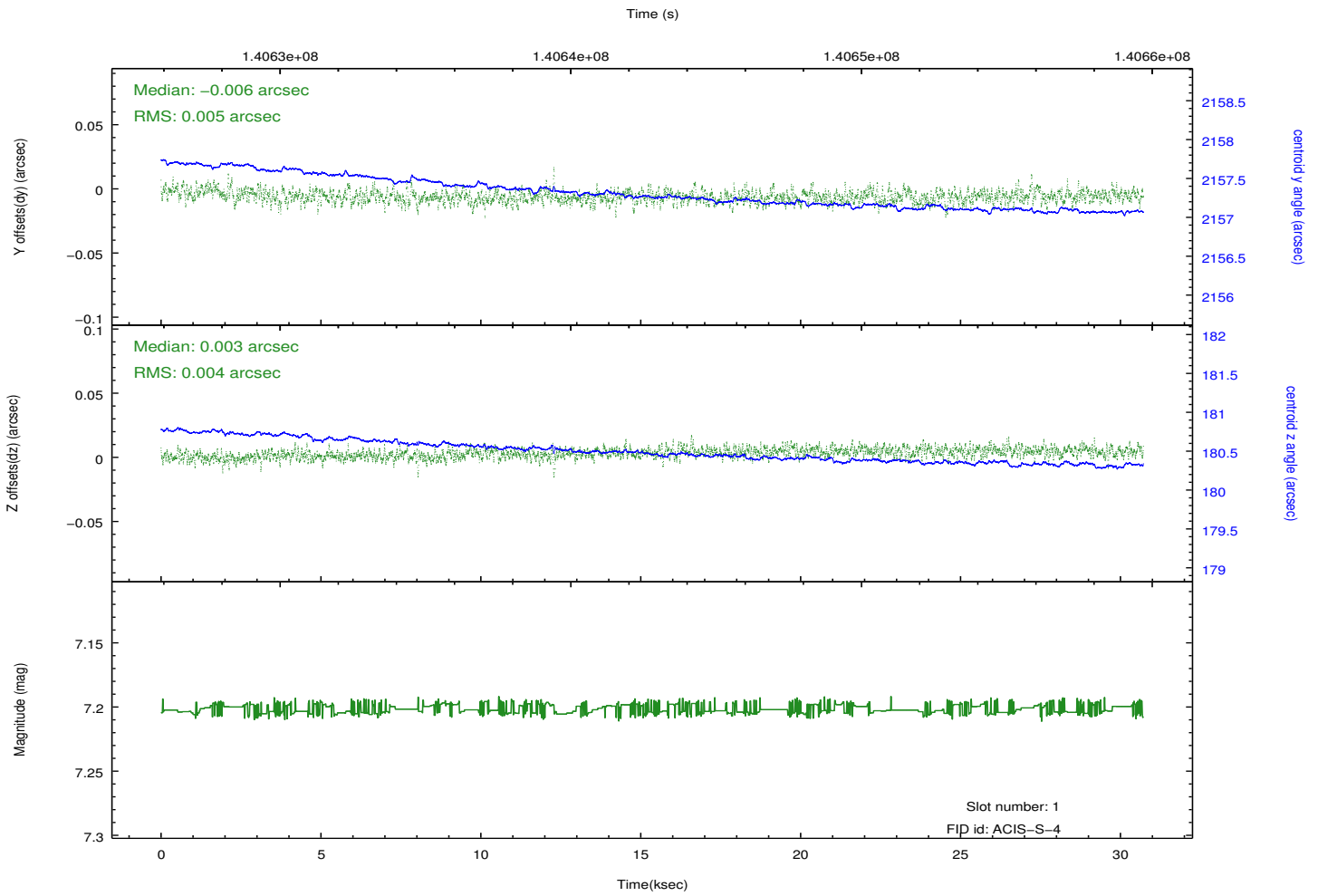
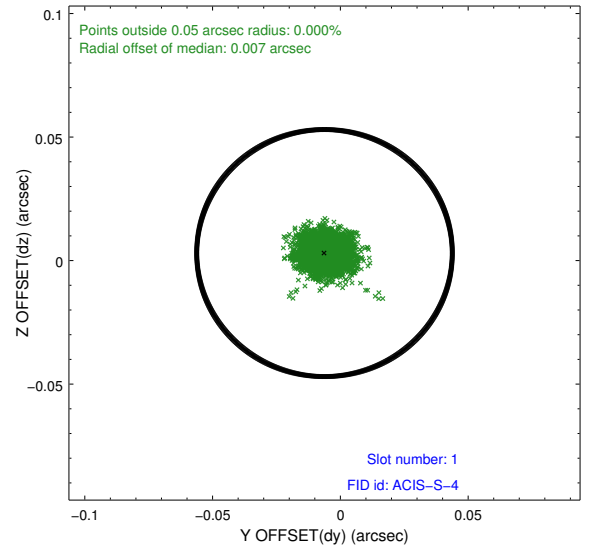
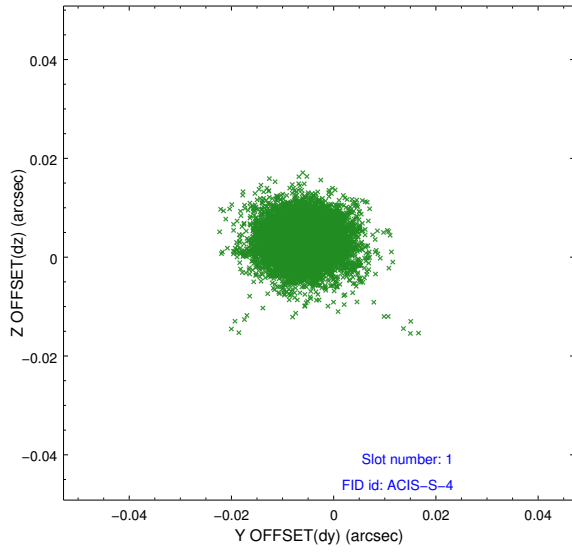


2.5 FID Slots

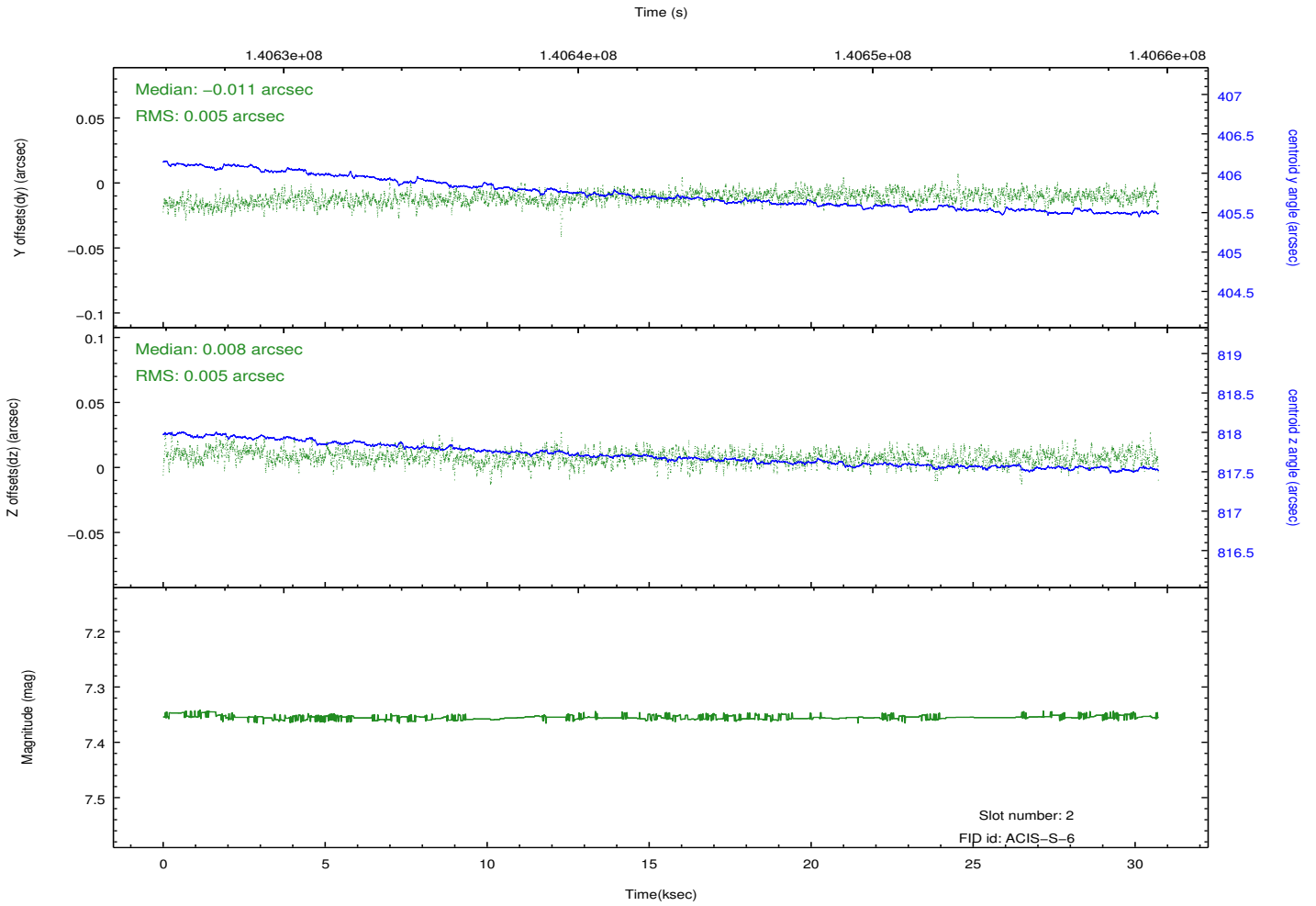
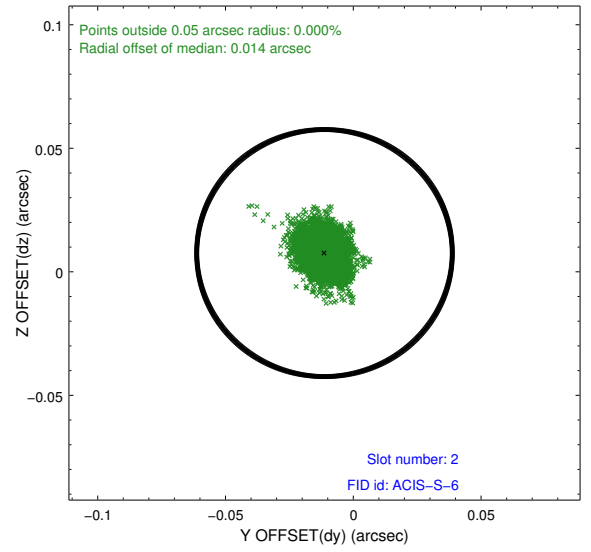
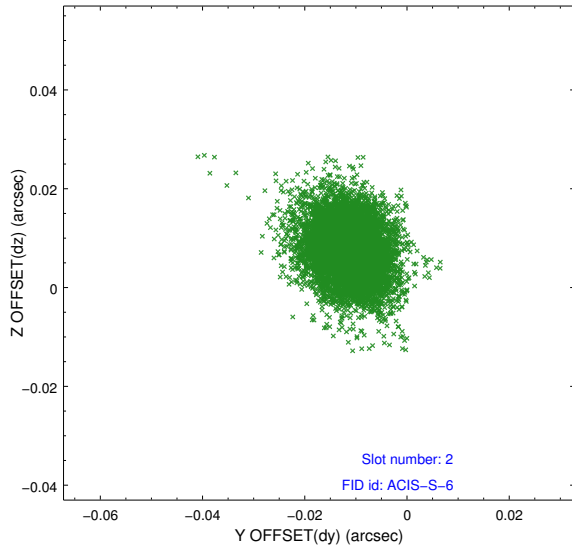
2.5.1 Slot 0



2.5.2 Slot 1



2.5.3 Slot 2



A Summary

A.1 Status

V&V Scientist	Joy Nichols
V&V Date (YYYY-MM-DD)	2013.06.04
V&V Edition	1
V&V Disposition and Status	OK
V&V Charge Time	30.403

A.2 Comments

A warning from the software indicates out-of-sequence exposure records. This appears to be due to a duplication of ACIS packets in the raw telemetry. The duplicate data is filtered out in Level 2 data, so there is no problem with Level 2 data. The duplicate data could be removed from the raw telemetry by special processing, removing major/minor frames 10541:68 - 10541:78.