

# V&V Reference Report

## L2 ASCDS Version : 8.4.5

Observation 3058 - L2 Version 4  
Chandra X-Ray Center

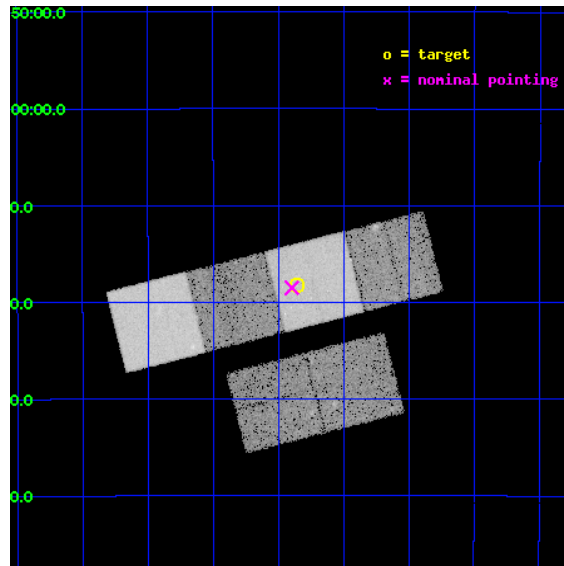
L2 Processing Date : Oct 18 2012

## Contents

<b>1</b>	<b>Front</b>	<b>2</b>
<b>2</b>	<b>OBI</b>	<b>3</b>
2.1	OBI . . . . .	3
2.1.1	Images . . . . .	3
2.1.2	Bias . . . . .	3
2.1.3	Parameters . . . . .	4
2.1.4	Events . . . . .	4
2.2	Compared Parameters . . . . .	5
2.3	Aspect . . . . .	6
2.4	Star Slots . . . . .	9
2.4.1	Slot 3 . . . . .	9
2.4.2	Slot 4 . . . . .	10
2.4.3	Slot 5 . . . . .	11
2.4.4	Slot 6 . . . . .	12
2.4.5	Slot 7 . . . . .	13
2.5	FID Slots . . . . .	14
2.5.1	Slot 0 . . . . .	14
2.5.2	Slot 1 . . . . .	15
2.5.3	Slot 2 . . . . .	16
<b>A</b>	<b>Summary</b>	<b>17</b>
A.1	Status . . . . .	17
A.2	Comments . . . . .	17

# 1 Front

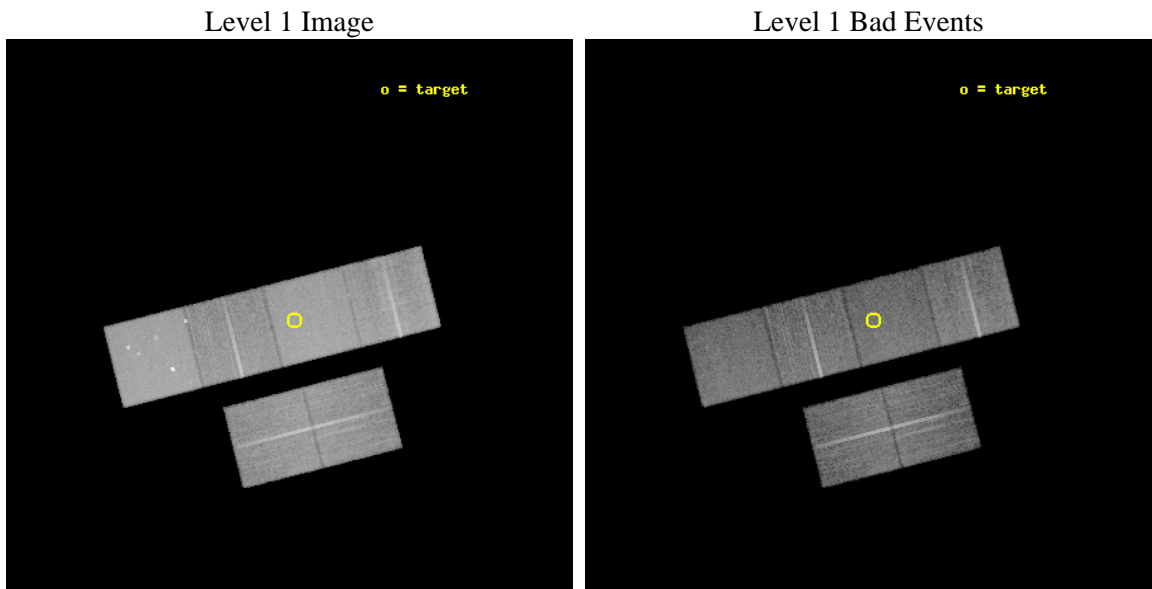
seq_num	700497	Sequence number
obs_id	3058	Observation id
title	X-RAY STUDIES OF HIGH REDSHIFT RADIO GALAXIES	Proposal title
observer	Dr. Chris Carilli	Principal investigator
object	0406-244	Source name
dtcycle	0	&#160
cycle	P	events from which exps? Prim/Second/Both
ra_targ	62.214583	Observer's specified target RA [deg]
dec_targ	-24.304583	Observer's specified target Dec [deg]
ra_nom	62.224221704731	Nominal RA [deg]
dec_nom	-24.308539823098	Nominal Dec [deg]
roll_nom	345.80518651157	Nominal Roll [deg]
revision	4	Processing version of data
ontime	20179.199924827	Sum of GTIs [s]
livetime	19923.678744923	Livetime [s]
ontime2	20179.199924827	Sum of GTIs [s]
ontime3	20179.199924827	Sum of GTIs [s]
ontime5	20179.199924827	Sum of GTIs [s]
ontime6	20179.199924827	Sum of GTIs [s]
ontime7	20179.199924827	Sum of GTIs [s]
ontime8	20179.199924827	Sum of GTIs [s]
l2events	216321	Number of level 2 events



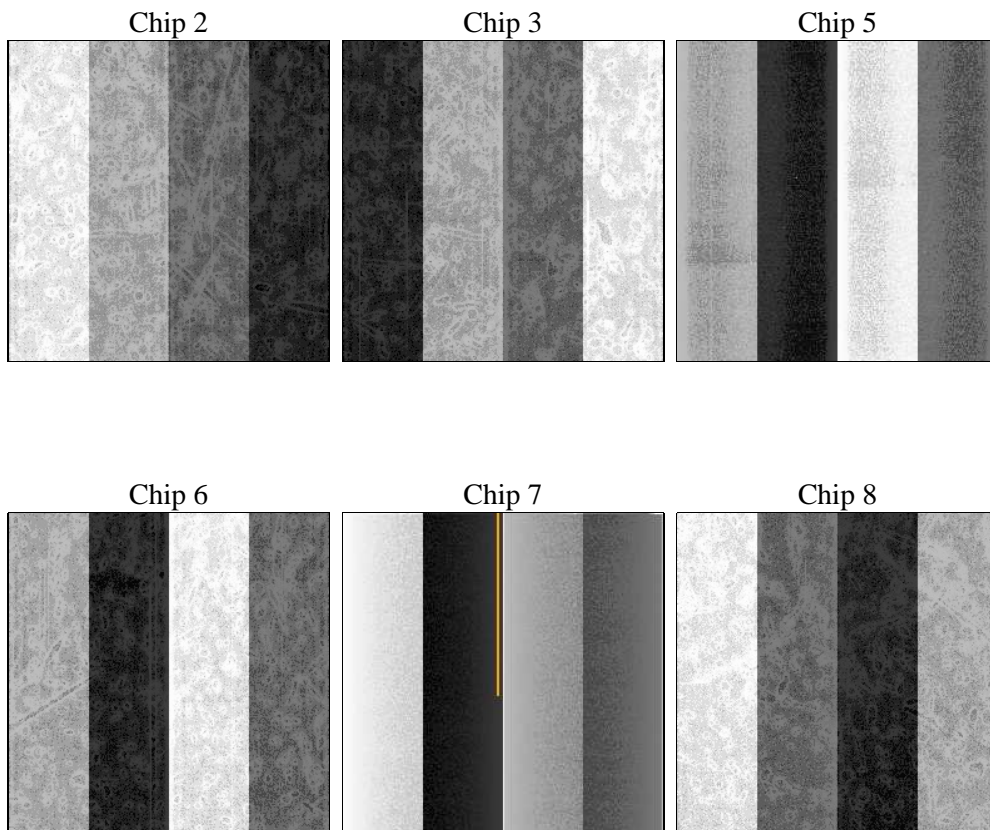
## 2 OBI

### 2.1 OBI

#### 2.1.1 Images



#### 2.1.2 Bias



### 2.1.3 Parameters

obi_num	2	Obi number	sched_exp_time	20000.000000	[s] Scheduled observation exposure time
ascdsver	8.4.5	Processing system revision	ontime	20179.199924827	Sum of GTIs [s]
caldsver	4.5.2	&#160	ontime2	20179.199924827	Sum of GTIs [s]
date	2012-10-18T14:21:35	Date and time of file creation	ontime3	20179.199924827	Sum of GTIs [s]
revision	4	Processing version of data	ontime5	20179.199924827	Sum of GTIs [s]
			ontime6	20179.199924827	Sum of GTIs [s]
			ontime7	20179.199924827	Sum of GTIs [s]
			ontime8	20179.199924827	Sum of GTIs [s]
			l1events	908690	Number of level 1 events

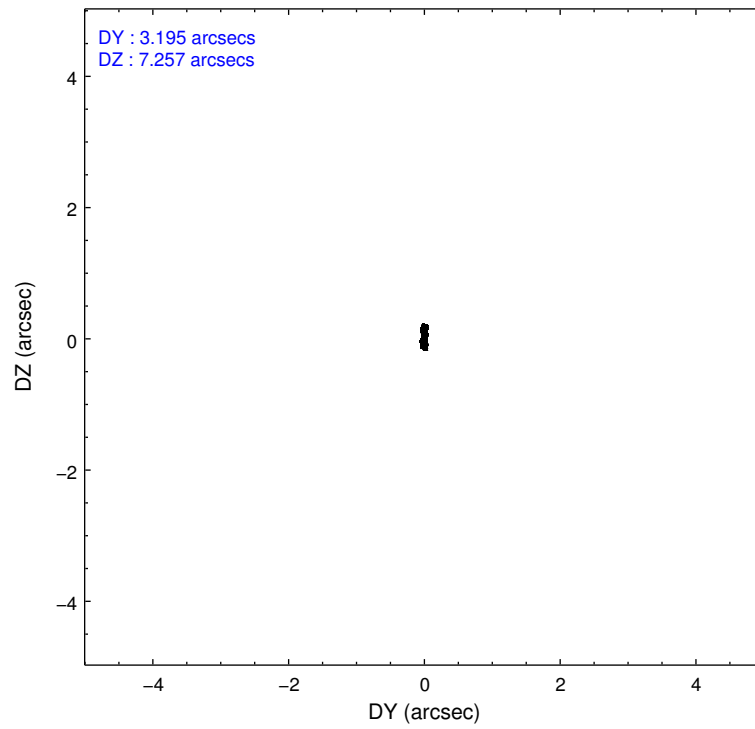
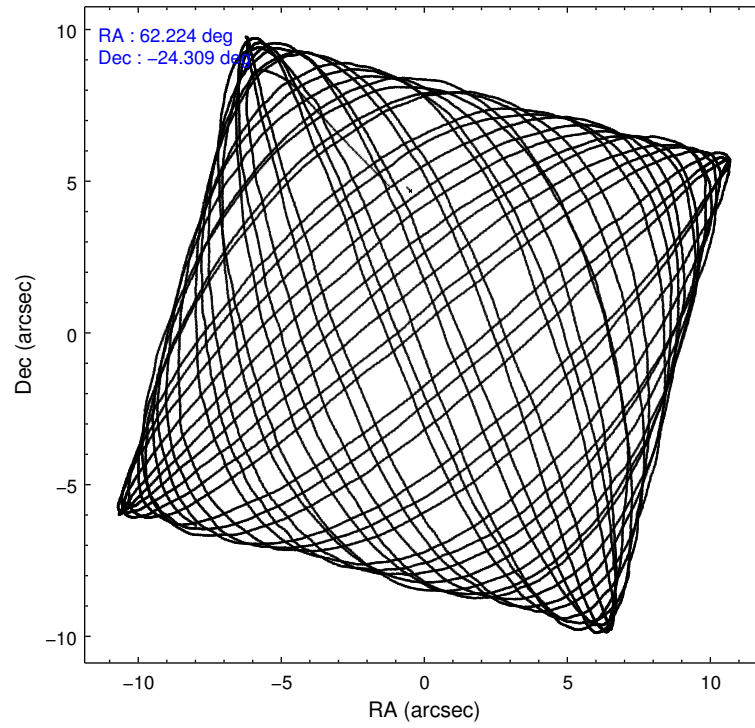
### 2.1.4 Events

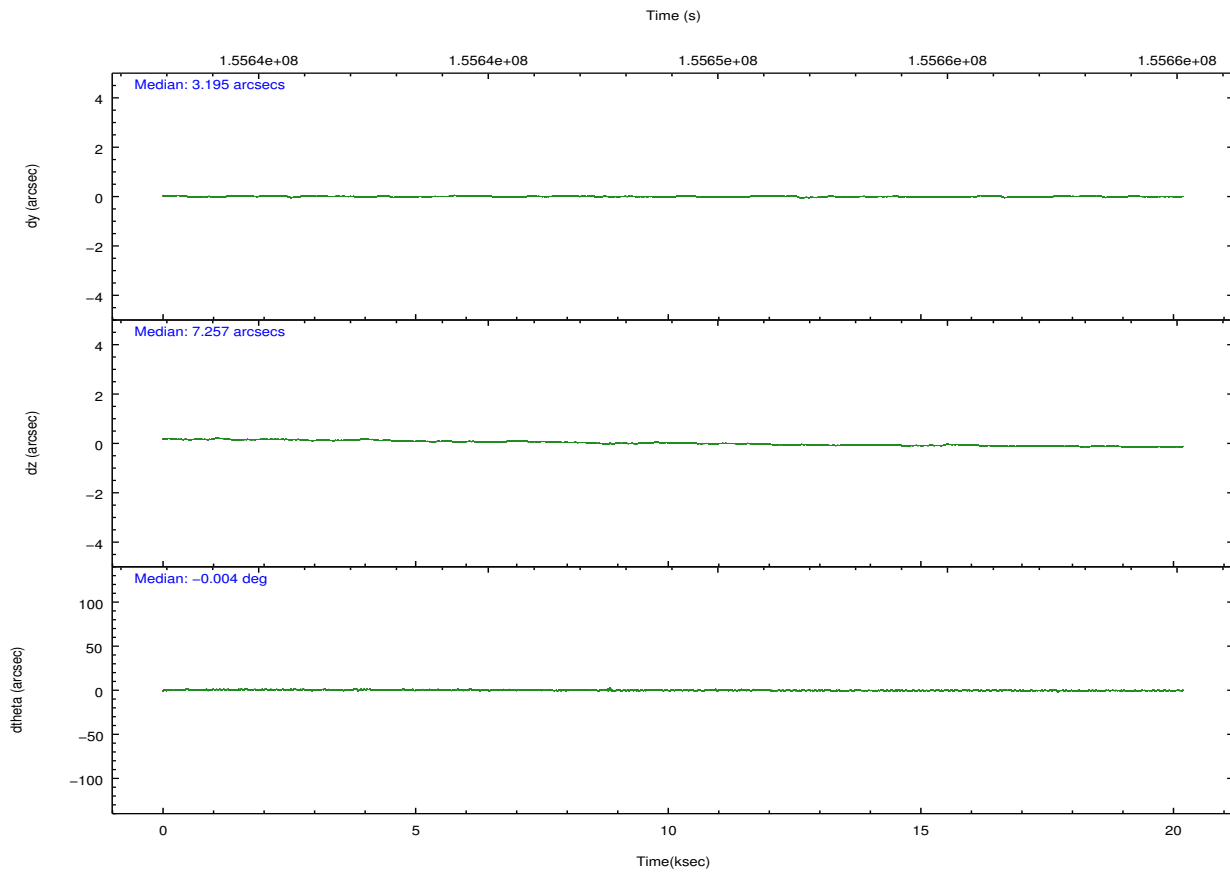
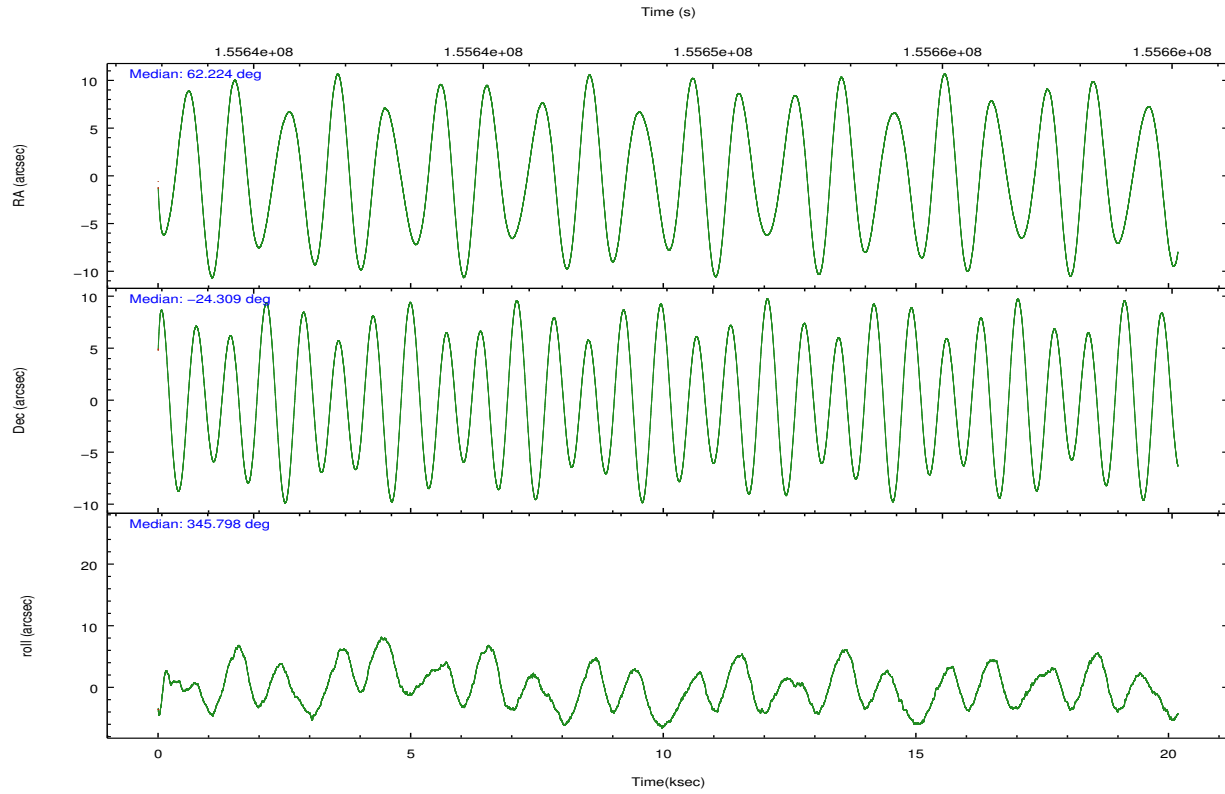
	ccd 2	ccd 3	ccd 5	ccd 6	ccd 7	ccd 8		ccd 2	ccd 3	ccd 5	ccd 6	ccd 7	ccd 8
level 1 events	127143	118942	199323	127956	175249	160077	grade 0 events	6298	6459	15678	6171	7573	10745
rejected events	112546	104672	100799	113075	97550	127205		4%	5%	7%	4%	4%	6%
rejected %	88%	88%	50%	88%	55%	79%	grade 1 events	93	62	217	51	153	93
								0%	0%	0%	0%	0%	0%
							grade 2 events	3095	2623	27894	2892	14916	7144
								2%	2%	13%	2%	8%	4%
							grade 3 events	1389	1422	3858	1470	6917	3378
								1%	1%	1%	1%	3%	2%
							grade 4 events	1393	1359	3846	1459	6849	3138
								1%	1%	1%	1%	3%	1%
							grade 5 events	4819	5366	13648	5526	16182	7123
								3%	4%	6%	4%	9%	4%
							grade 6 events	2437	2426	47337	2906	41515	8488
								1%	2%	23%	2%	23%	5%
							grade 7 events	107619	99225	86845	107481	81144	119968
								84%	83%	43%	83%	46%	74%

## 2.2 Compared Parameters

Parameter	Planned	Actual	Parameter	Planned	Actual
Instrument	ACIS	ACIS	Obspar format version number	7	7
Detector	ACIS-235678	ACIS-235678	Obspar file type	PREDICTED	ACTUAL
Grating	NONE	NONE	Obspar update status	NONE	UPDATED
Data mode	FAINT	FAINT	Number of optional ACIS chips dropped	0	0
Observation mode	POINTING	POINTING	On-chip summing requested	N	N
[deg] Pointing RA	62.195615	62.22422170473118	Subarray requested	NONE	NONE
[deg] Pointing Dec	-24.316329	-24.30853982309824	Alternating exposures requested	N	N
[deg] Pointing Roll	345.636787	345.8051865115744	[s] Primary exposure time	0.000000	3.2
[mm] SIM focus pos	-0.684267	-0.6828225247311905			
[mm] SIM defocus	0	0.001444936568705701			
[mm] SIM translation stage pos	-190.132523	-190.1400660498719			
[mm] SIM translation stage offset	0	0.00754346686406393			
[s] Observation start time (MET)	155639115.184000	155638036.75344			
Observation start date	2002-12-07T09:04:11	2002-12-07T08:47:16			
[s] Observation end time (MET)	155659115.184000	155660008.65435			
Observation end date	2002-12-07T14:37:31	2002-12-07T14:53:28			
Read mode	TIMED	TIMED			

## 2.3 Aspect





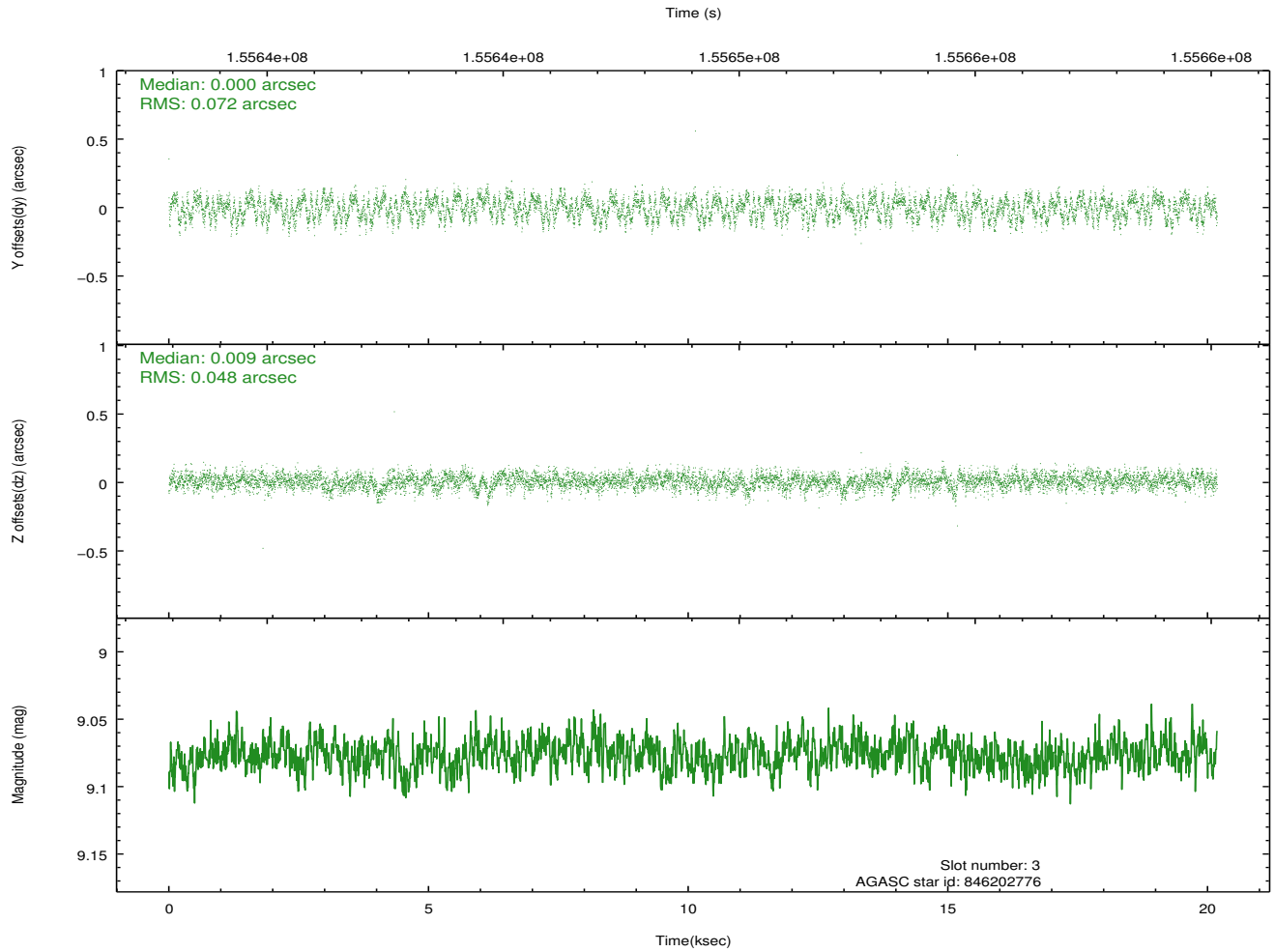
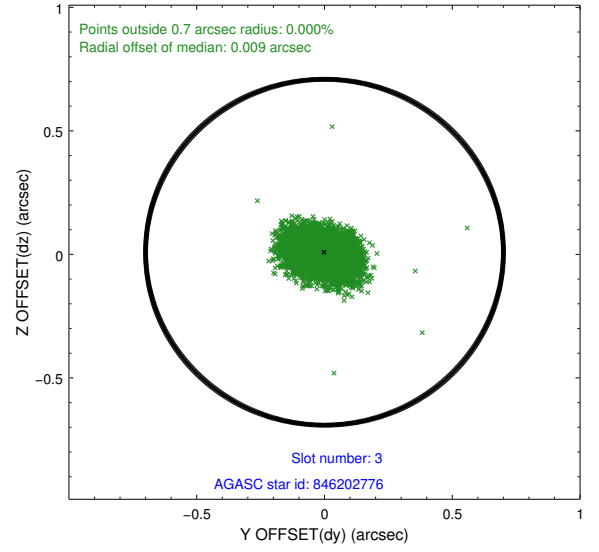
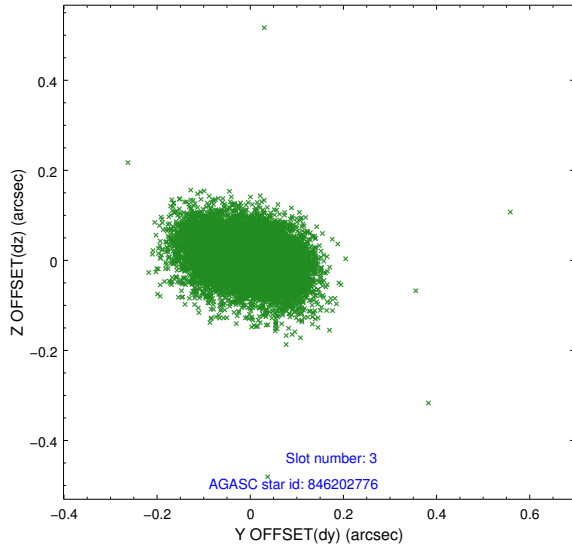
### Slot Statistics

slot	status	id	mag	n_pts	med_dy	med_dz	dr1	dr2	ra	dec	mean_y	mean_z
0	FID	ACIS-S-2	7.12	4924	-0.017	-0.006	0.007	0.012	0.000000	0.000000	-755.86	-1728.44
1	FID	ACIS-S-4	7.20	4924	0.009	0.010	0.006	0.010	0.000000	0.000000	2157.36	179.86
2	FID	ACIS-S-5	7.24	4923	-0.023	0.005	0.007	0.011	0.000000	0.000000	-1808.47	173.74
3	GUIDE	846202776	9.08	9844	0.000	0.009	0.092	0.146	61.950035	-23.807490	-1238.30	1573.17
4	GUIDE	846598664	7.51	9847	0.179	-0.208	0.077	0.145	62.685033	-25.096075	2242.83	-2326.31
5	GUIDE	846603472	7.84	9842	-0.176	0.019	0.061	0.100	62.250757	-25.017799	800.87	-2401.88
6	GUIDE	846205296	8.74	9846	-0.072	-0.103	0.069	0.111	61.865406	-24.743147	-664.48	-1757.98
7	GUIDE	846208952	9.44	9840	0.077	0.285	0.106	0.178	63.072548	-23.908290	2433.28	2130.75

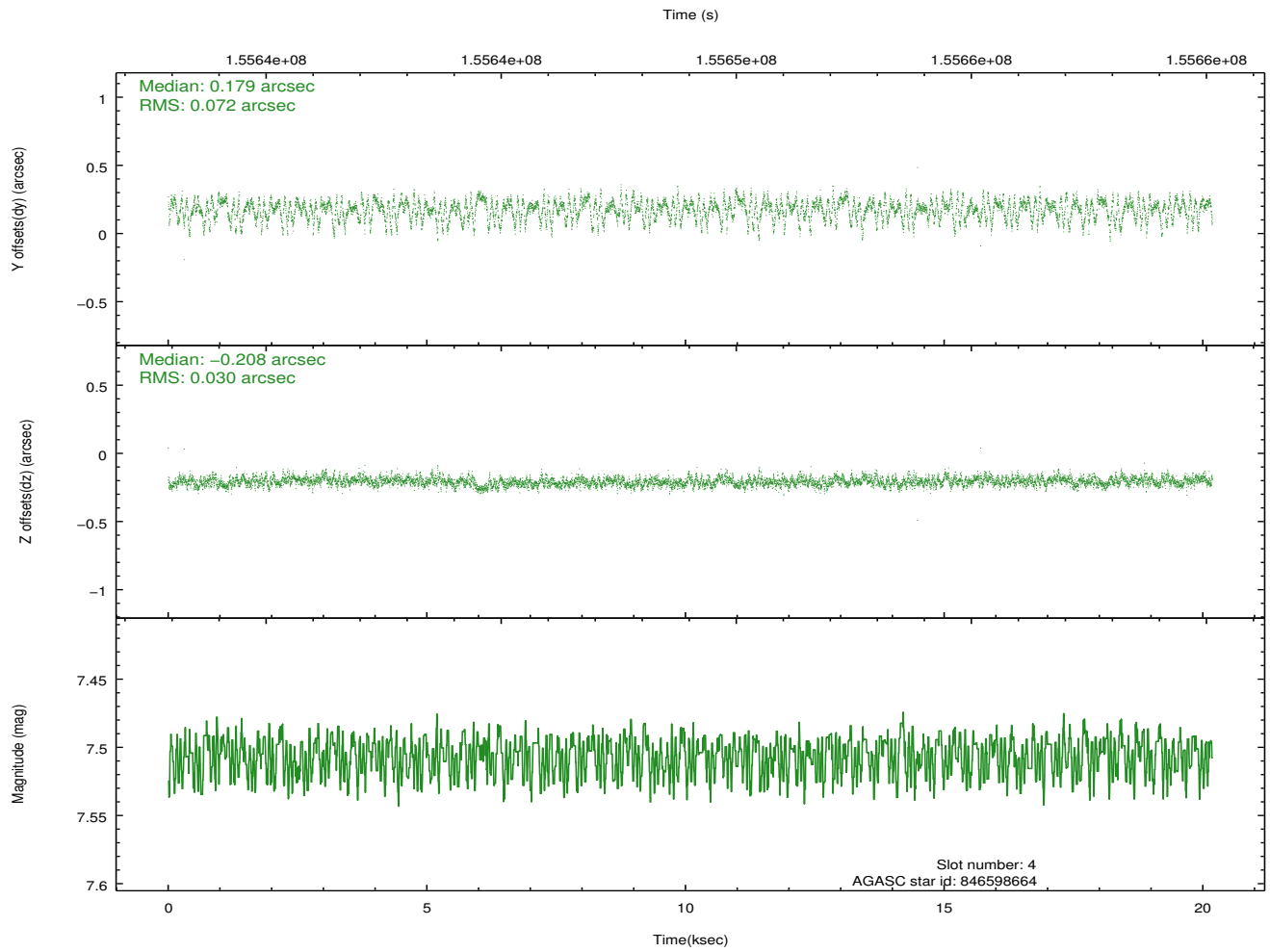
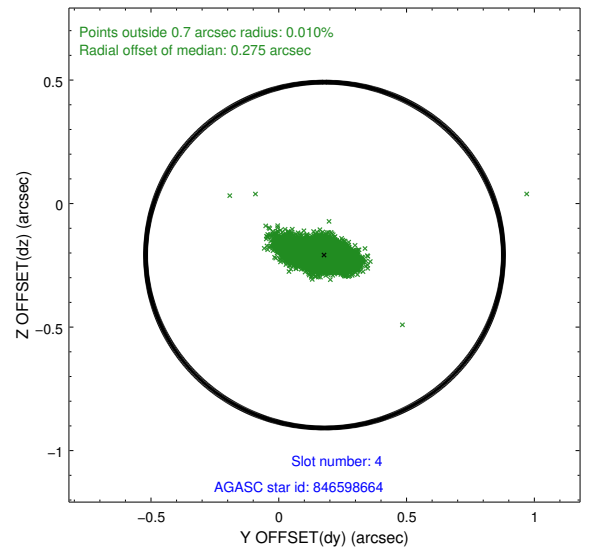
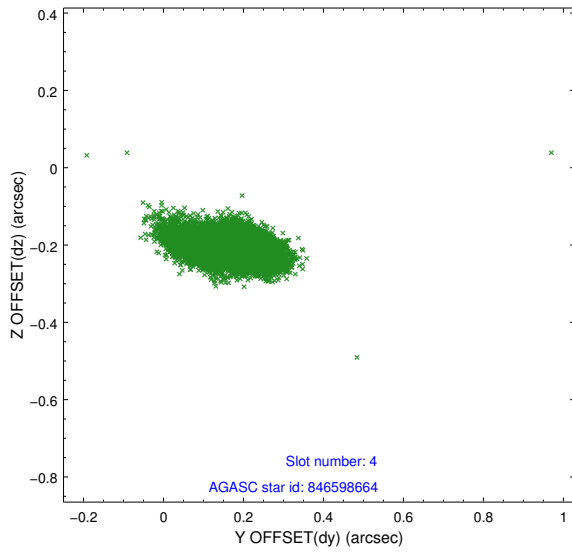
∞

## 2.4 Star Slots

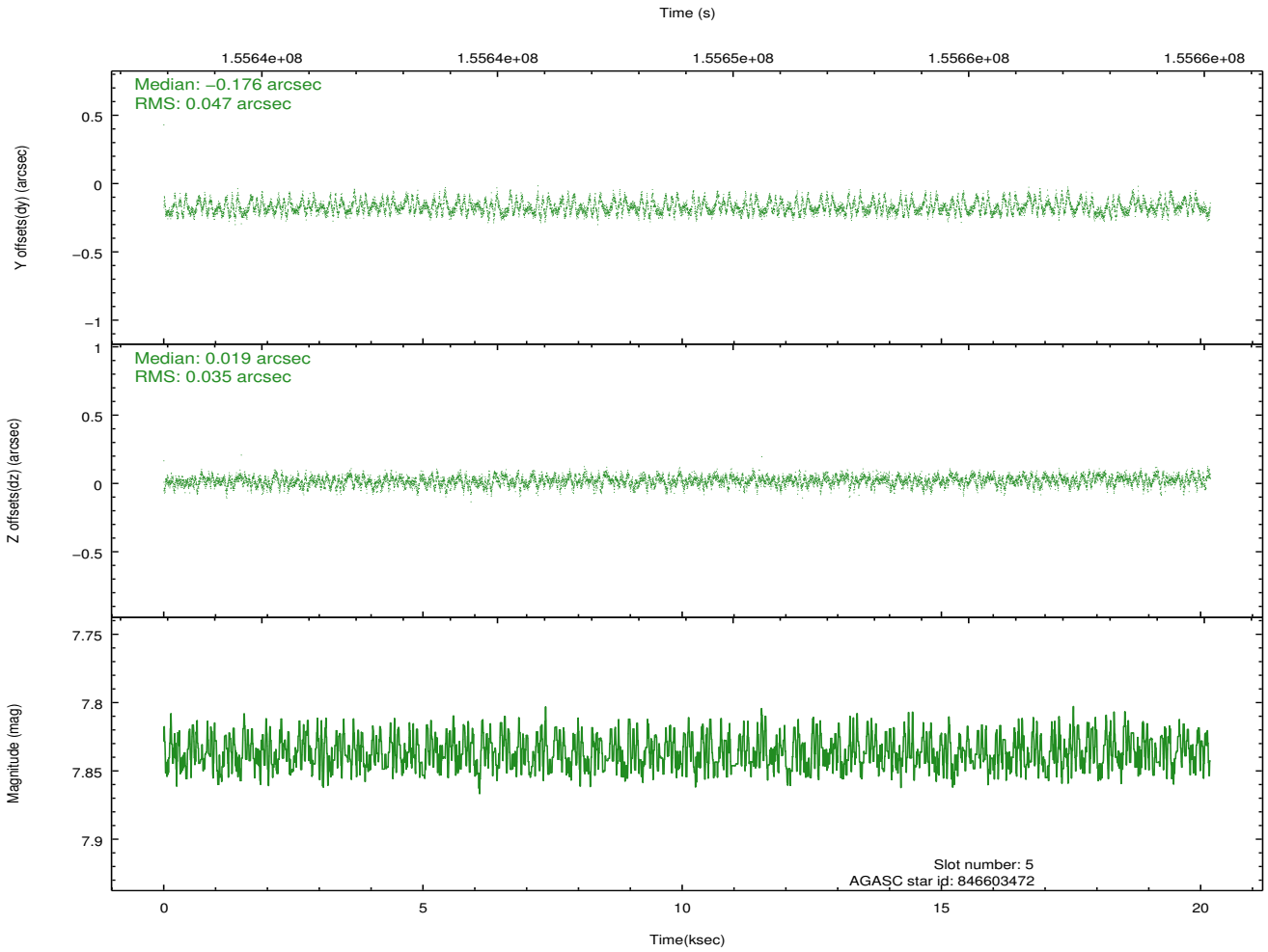
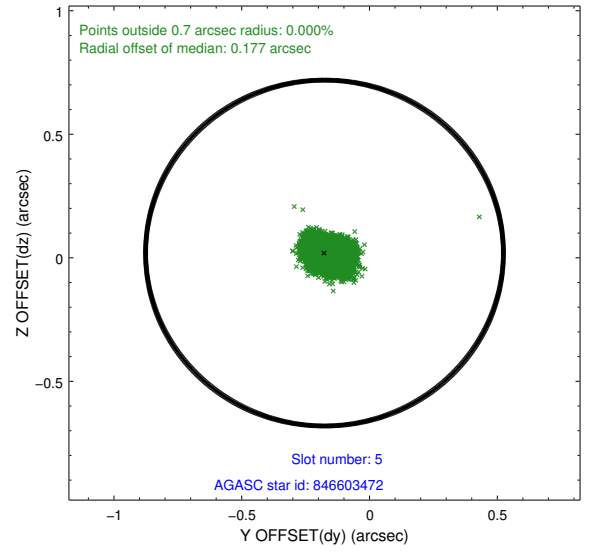
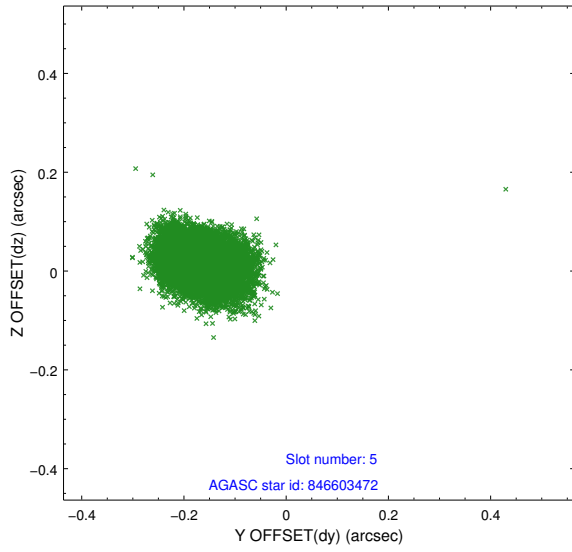
### 2.4.1 Slot 3



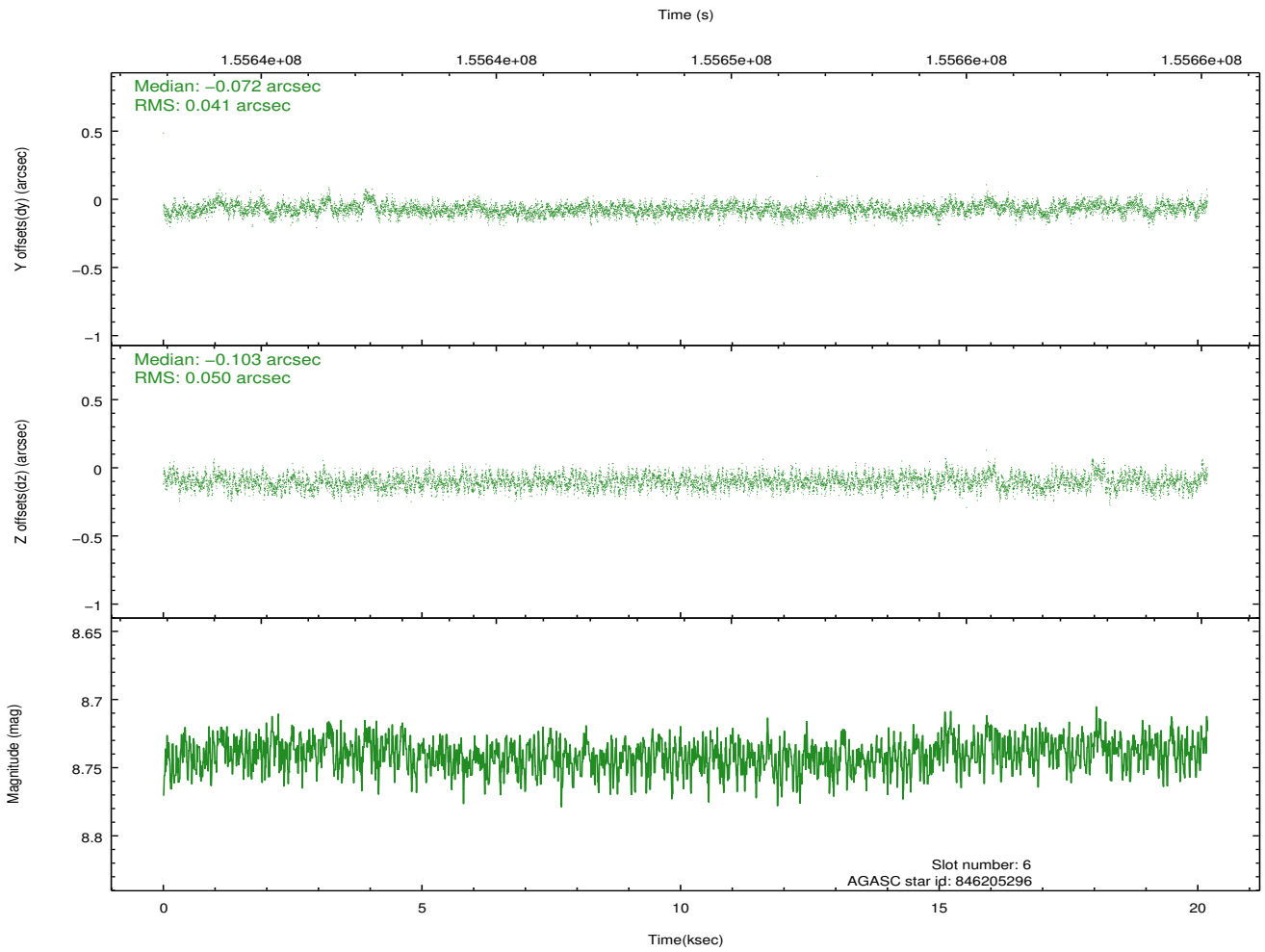
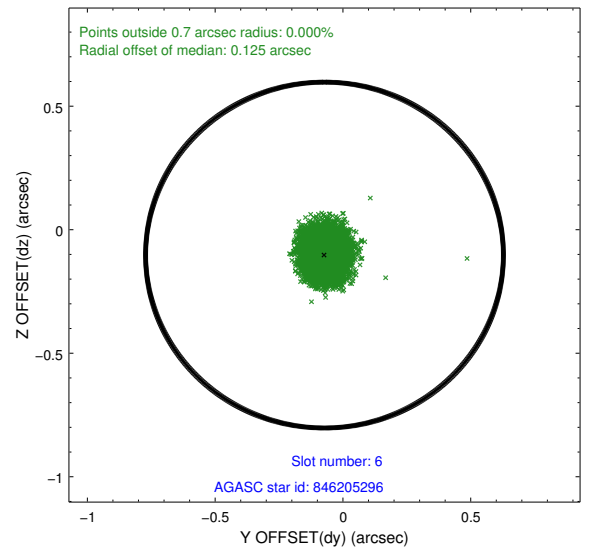
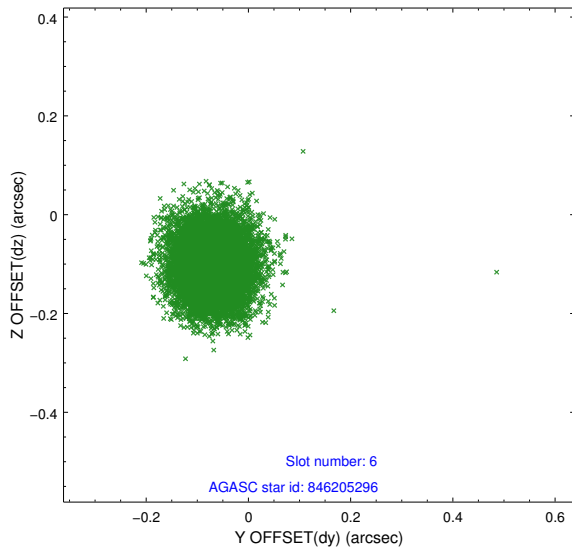
## 2.4.2 Slot 4



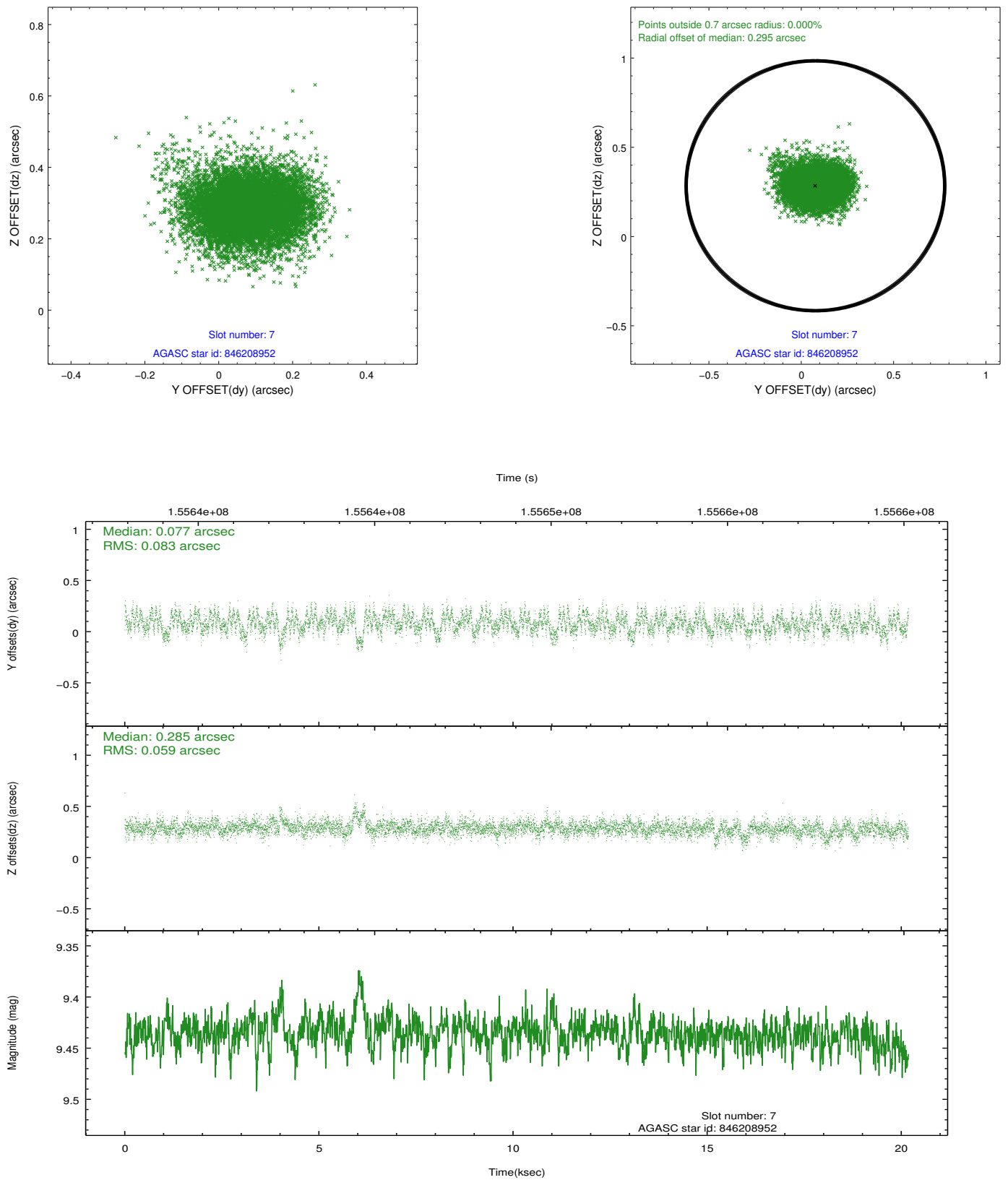
### 2.4.3 Slot 5



## 2.4.4 Slot 6

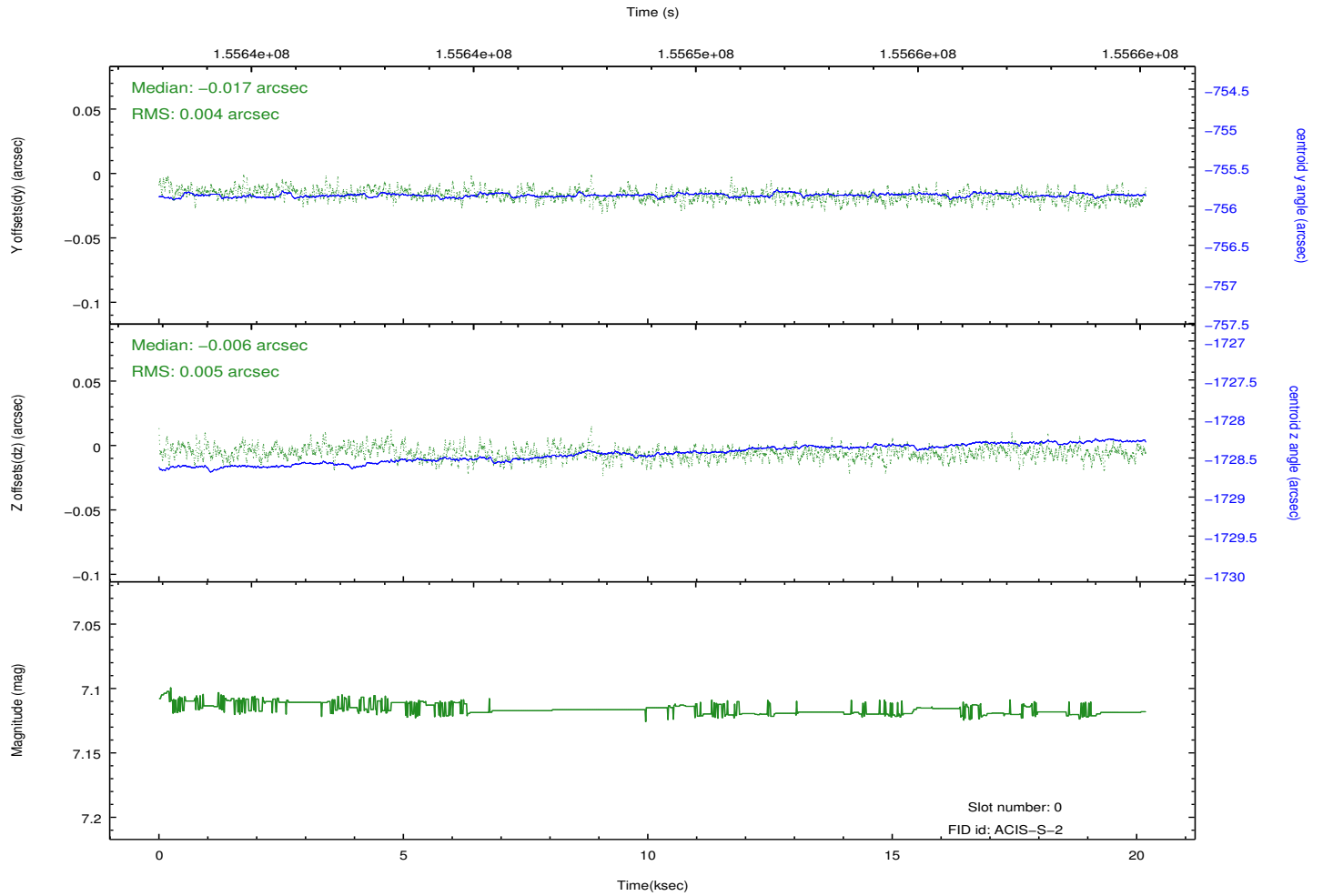
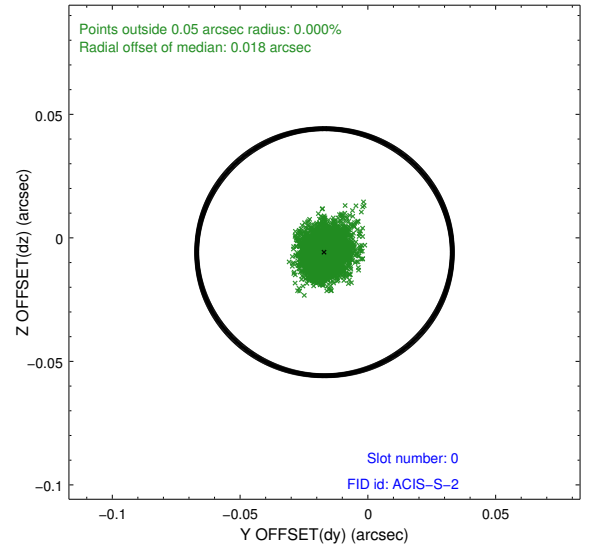
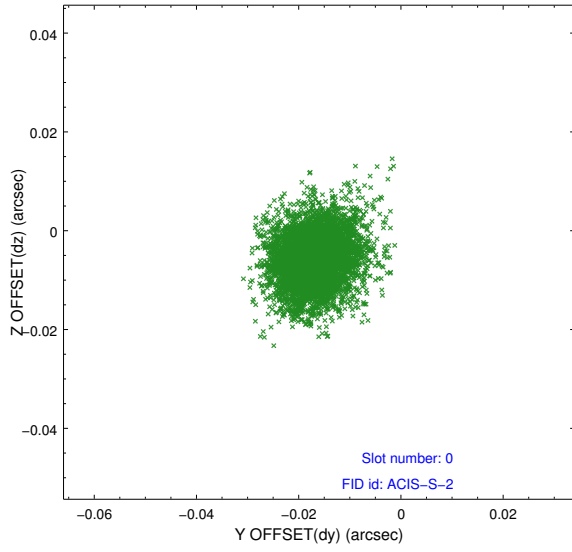


## 2.4.5 Slot 7

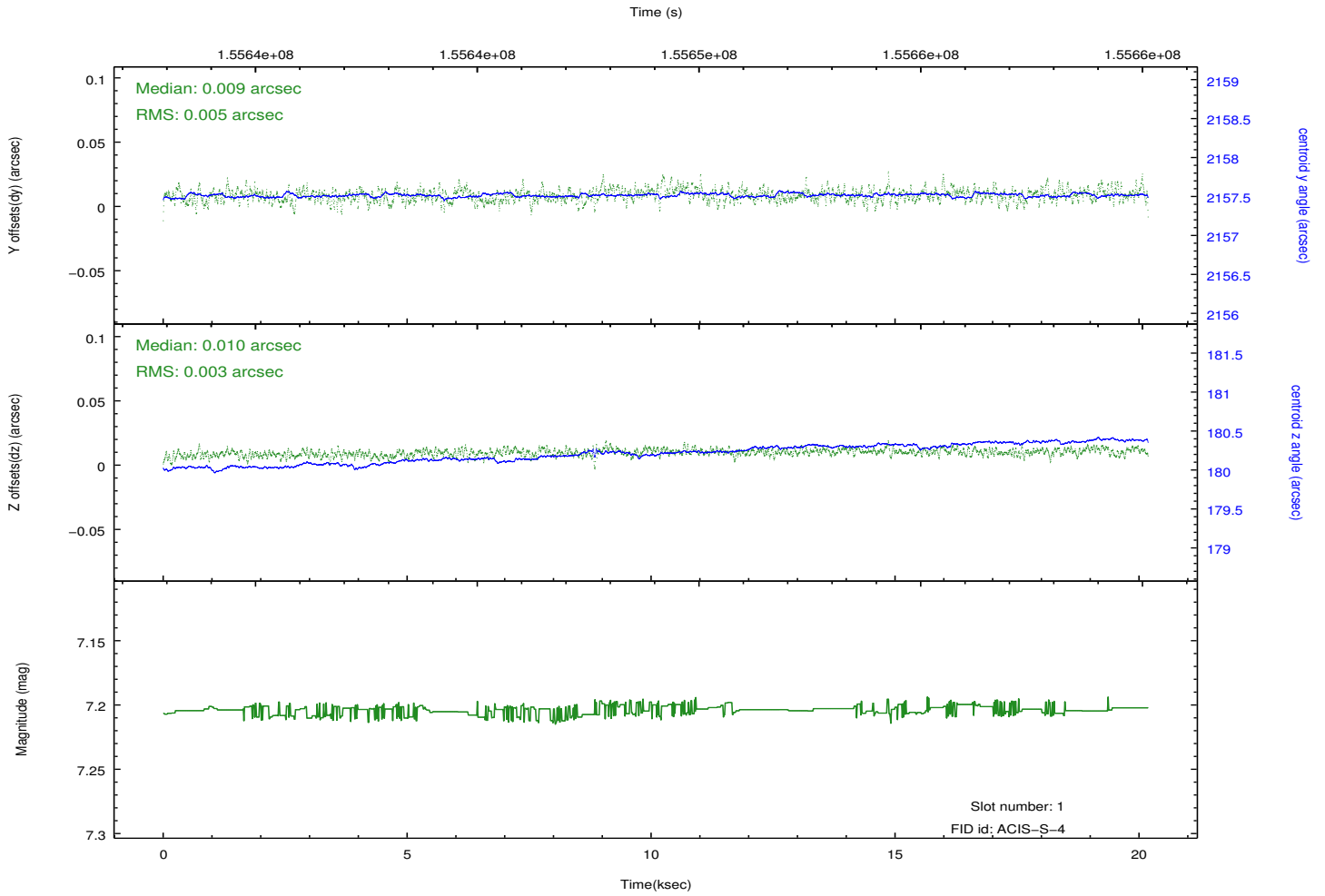
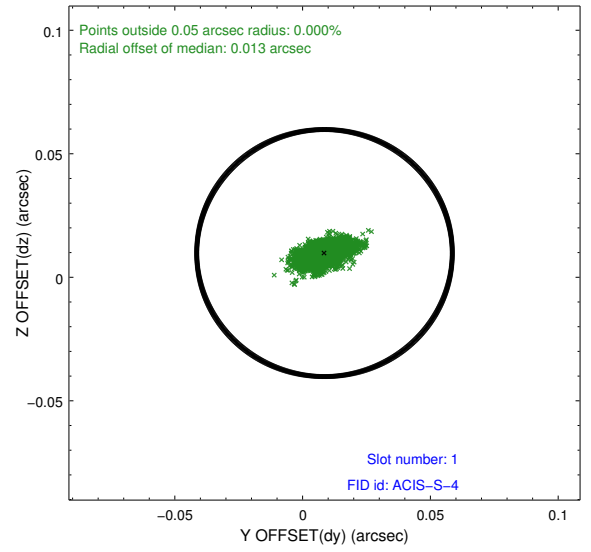
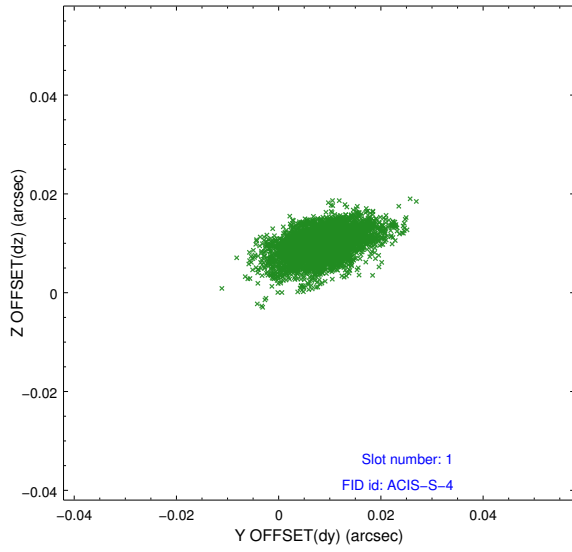


## 2.5 FID Slots

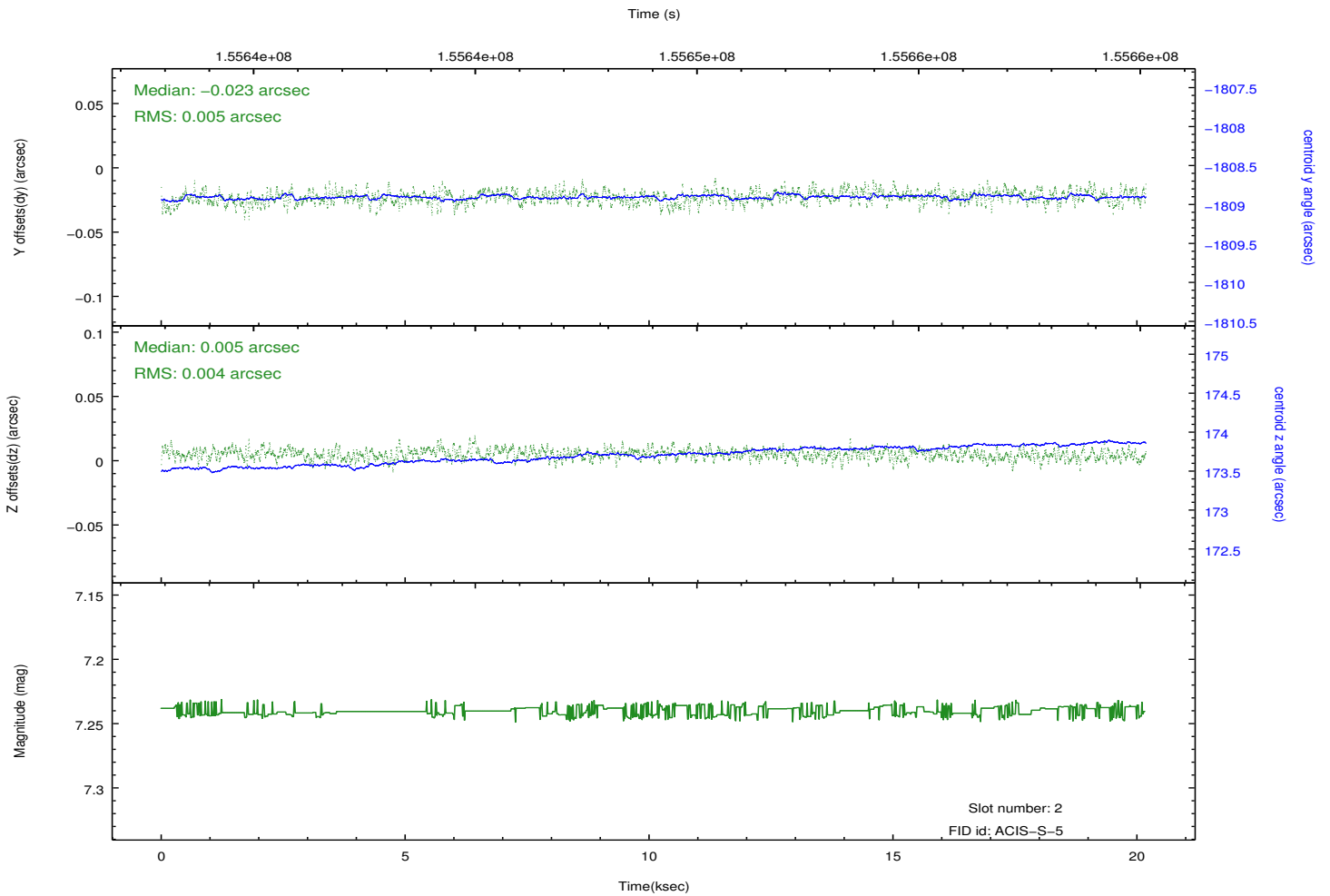
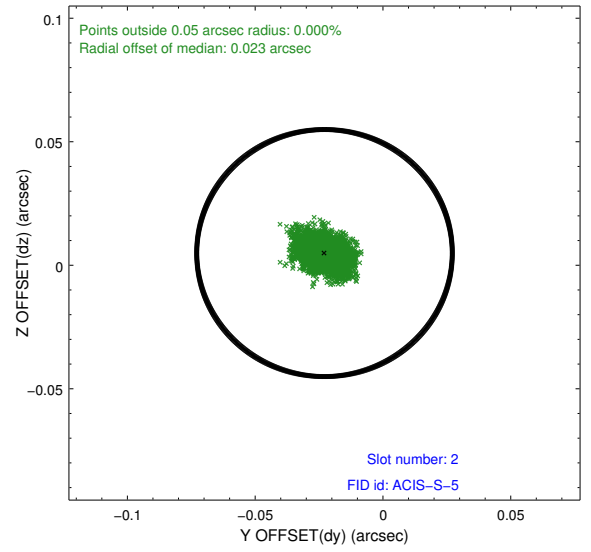
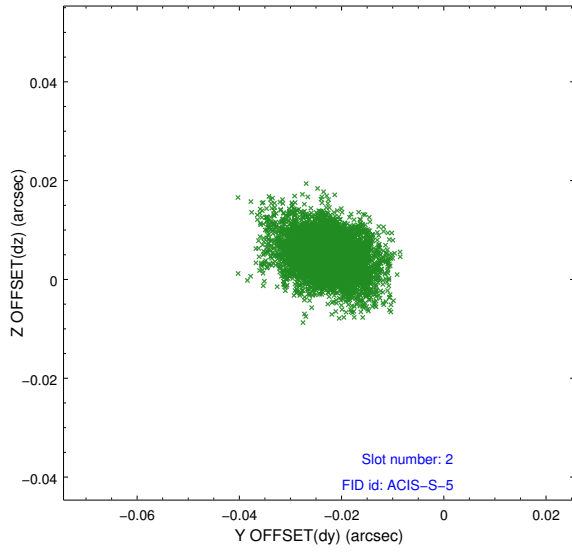
### 2.5.1 Slot 0



## 2.5.2 Slot 1



### 2.5.3 Slot 2



# A Summary

## A.1 Status

V&V Scientist	Jen Lauer
V&V Date (YYYY-MM-DD)	2012.10.30
V&V Edition	1
V&V Disposition and Status	OK
V&V Charge Time	20.179

## A.2 Comments