

V&V Reference Report

L2 ASCDS Version : 8.4.5

Observation 3138 - L2 Version 3
Chandra X-Ray Center

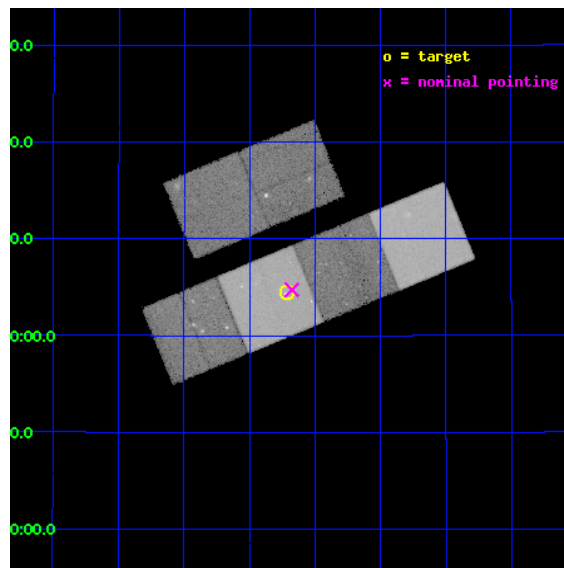
L2 Processing Date : Oct 7 2012

Contents

1	Front	2
2	OBI	3
2.1	OBI	3
2.1.1	Images	3
2.1.2	Bias	3
2.1.3	Parameters	4
2.1.4	Events	4
2.2	Compared Parameters	5
2.3	Aspect	6
2.4	Star Slots	9
2.4.1	Slot 3	9
2.4.2	Slot 4	10
2.4.3	Slot 5	11
2.4.4	Slot 6	12
2.4.5	Slot 7	13
2.5	FID Slots	14
2.5.1	Slot 0	14
2.5.2	Slot 1	15
2.5.3	Slot 2	16
A	Summary	17
A.1	Status	17
A.2	Comments	17

1 Front

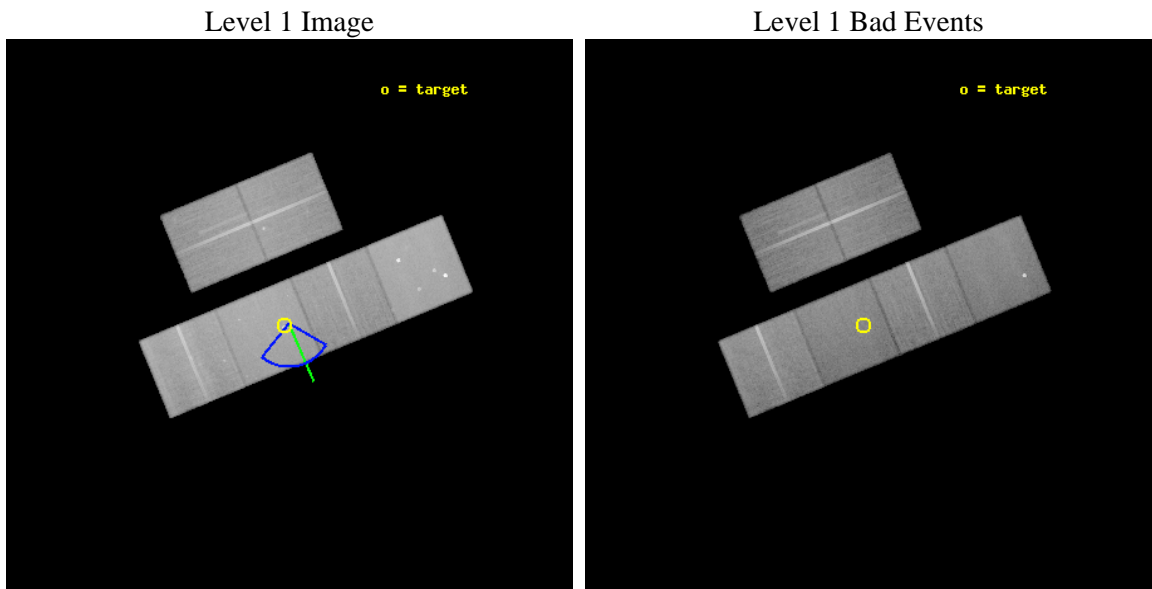
seq_num	700577	Sequence number
obs_id	3138	Observation id
title	MASSIVE GAS INFLOW IN RADIO GALAXIES	Proposal title
observer	DR MAKOTO KISHIMOTO	Principal investigator
object	3C321	Source name
dtcycle	0	
cycle	P	events from which exps? Prim/Second/Both
ra_targ	232.927917	Observer's specified target RA [deg]
dec_targ	24.073611	Observer's specified target Dec [deg]
ra_nom	232.91897155835	Nominal RA [deg]
dec_nom	24.078829611276	Nominal Dec [deg]
roll_nom	157.55615288286	Nominal Roll [deg]
revision	3	Processing version of data
ontime	47731.199822187	Sum of GTIs [s]
livetime	47126.798629761	Livetime [s]
ontime2	47727.95884195	Sum of GTIs [s]
ontime3	47731.199822187	Sum of GTIs [s]
ontime5	47731.199822187	Sum of GTIs [s]
ontime6	47731.199822187	Sum of GTIs [s]
ontime7	47731.199822187	Sum of GTIs [s]
ontime8	47721.476931304	Sum of GTIs [s]
l2events	494643	Number of level 2 events



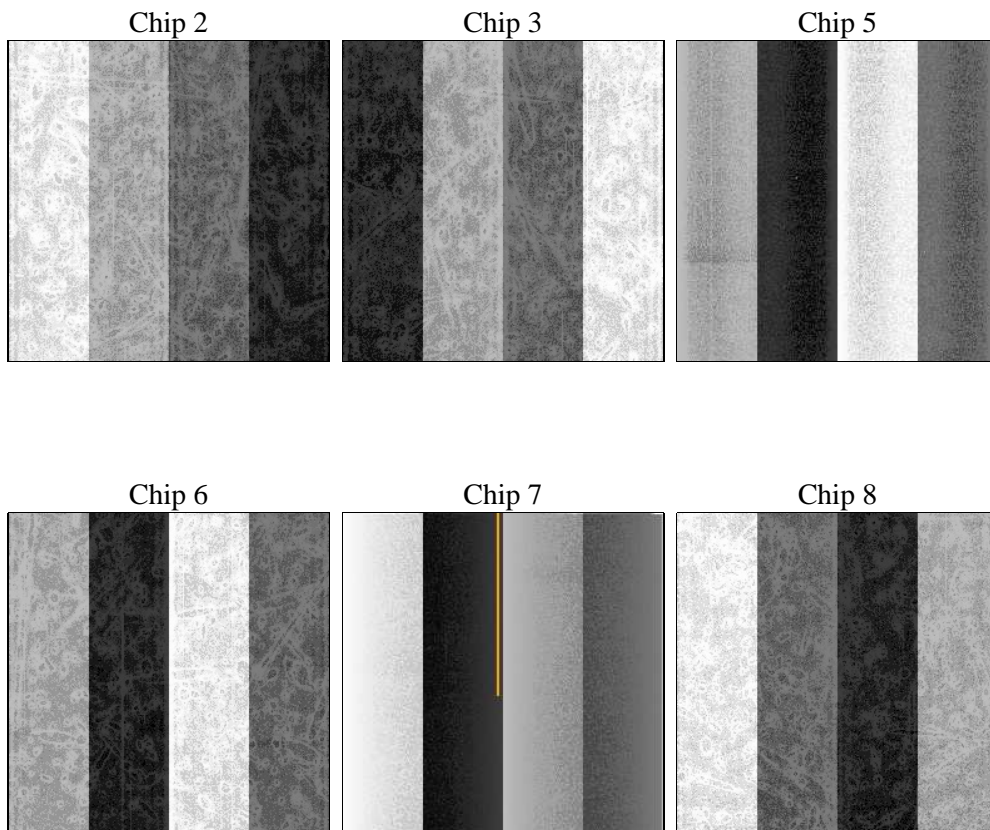
2 OBI

2.1 OBI

2.1.1 Images



2.1.2 Bias



2.1.3 Parameters

obi_num	0	Obi number	sched_exp_time	47645.563000	[s] Scheduled observation exposure time
ascdsver	8.4.5	Processing system revision	ontime	47731.199822187	Sum of GTIs [s]
caldbver	4.5.2	 	ontime2	47727.95884195	Sum of GTIs [s]
date	2012-10-07T09:29:11	Date and time of file creation	ontime3	47731.199822187	Sum of GTIs [s]
revision	3	Processing version of data	ontime5	47731.199822187	Sum of GTIs [s]
			ontime6	47731.199822187	Sum of GTIs [s]
			ontime7	47731.199822187	Sum of GTIs [s]
			ontime8	47721.476931304	Sum of GTIs [s]
			l1events	2182137	Number of level 1 events

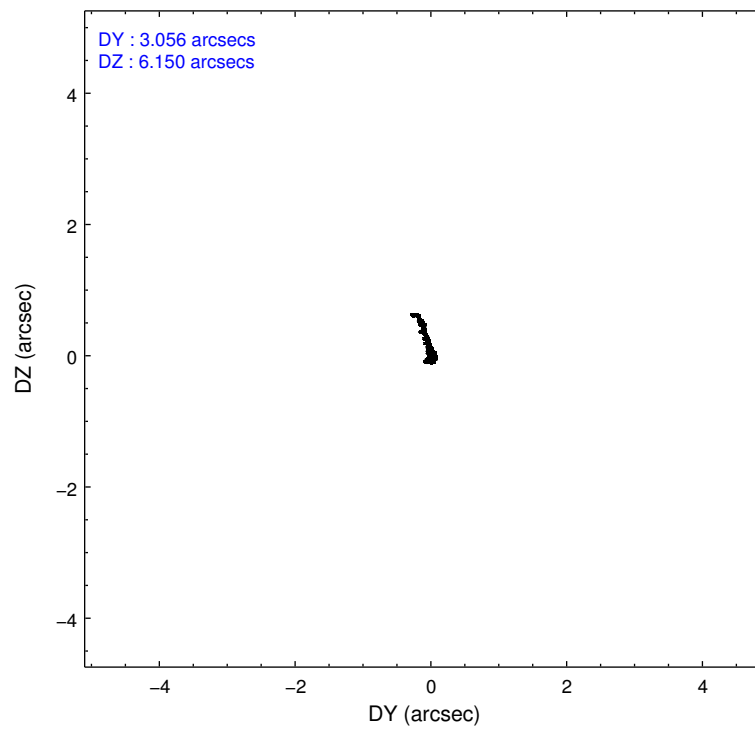
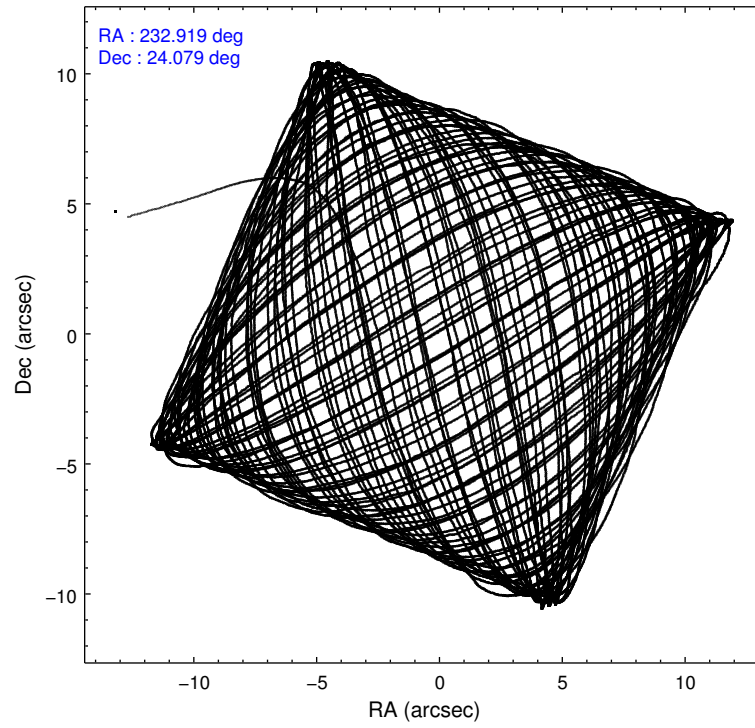
2.1.4 Events

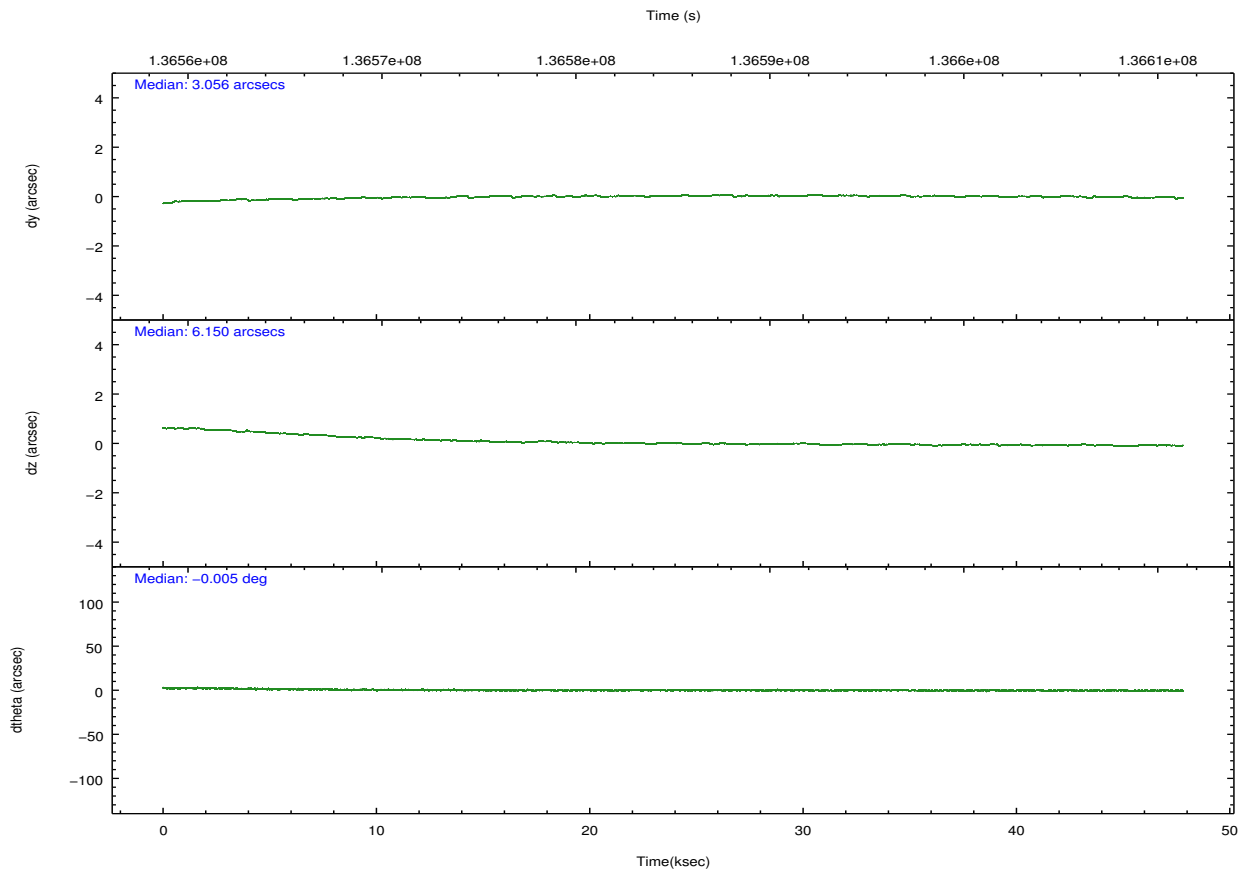
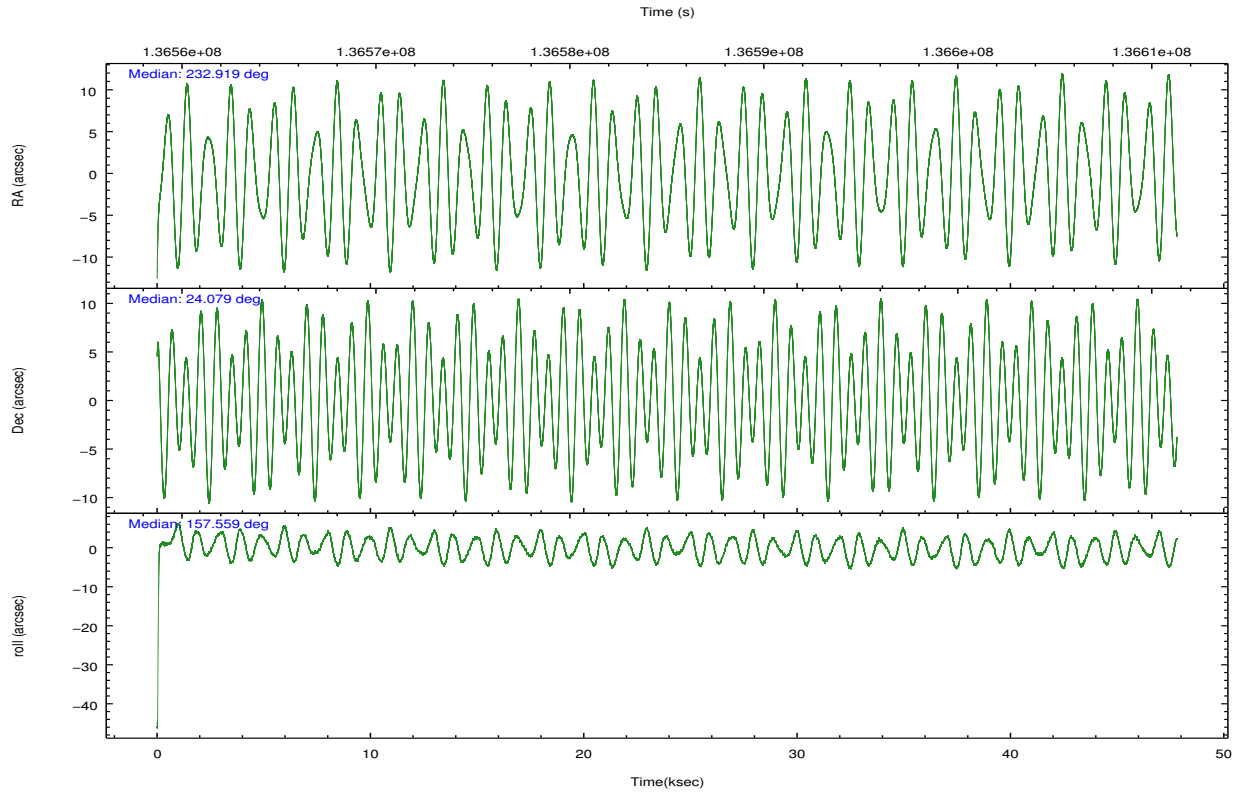
	ccd 2	ccd 3	ccd 5	ccd 6	ccd 7	ccd 8		ccd 2	ccd 3	ccd 5	ccd 6	ccd 7	ccd 8
level 1 events	313263	299151	458284	310473	406720	394246	grade 0 events	16808	15927	27966	15263	17971	28100
rejected events	275353	262818	243511	273400	234018	309005		5%	5%	6%	4%	4%	7%
rejected %	87%	87%	53%	88%	57%	78%	grade 1 events	145	145	503	152	366	206
								0%	0%	0%	0%	0%	0%
							grade 2 events	8056	7251	64916	7540	34630	18401
								2%	2%	14%	2%	8%	4%
							grade 3 events	3446	3369	8842	3527	15555	8869
								1%	1%	1%	1%	3%	2%
							grade 4 events	3237	3421	8086	3586	15560	8150
								1%	1%	1%	1%	3%	2%
							grade 5 events	11240	12202	34899	13585	38677	16972
								3%	4%	7%	4%	9%	4%
							grade 6 events	6363	6369	104985	7160	89018	21752
								2%	2%	22%	2%	21%	5%
							grade 7 events	263968	250467	208087	259660	194943	291796
								84%	83%	45%	83%	47%	74%

2.2 Compared Parameters

Parameter	Planned	Actual	Parameter	Planned	Actual
Instrument	ACIS	ACIS	Obspar format version number	7	7
Detector	ACIS-235678	ACIS-235678	Obspar file type	PREDICTED	ACTUAL
Grating	NONE	NONE	Obspar update status	NONE	UPDATED
Data mode	FAINT	FAINT	Number of optional ACIS chips dropped	0	0
Observation mode	POINTING	POINTING	On-chip summing requested	N	N
[deg] Pointing RA	232.948500	232.9189715583489	Subarray requested	NONE	NONE
[deg] Pointing Dec	24.082752	24.07882961127636	Alternating exposures requested	N	N
[deg] Pointing Roll	157.387494	157.5561528828627	[s] Primary exposure time	0.000000	3.2
[deg] Roll angle	170.000000	170.000000			
[deg] Roll tolerance	50.000000	50.000000			
Roll constraint allows 180D rotation	N	N			
[mm] SIM focus pos	-0.684267	-0.6828225247311905			
[mm] SIM defocus	0	0.001444936568705701			
[mm] SIM translation stage pos	-190.132523	-190.1425803651734			
[mm] SIM translation stage offset	0	0.01005778216563158			
[s] Observation start time (MET)	136561262.184000	136560238.8421			
Observation start date	2002-04-30T13:39:58	2002-04-30T13:23:58			
[s] Observation end time (MET)	136608907.184000	136609222.05659			
Observation end date	2002-05-01T02:54:03	2002-05-01T03:00:22			
Read mode	TIMED	TIMED			

2.3 Aspect



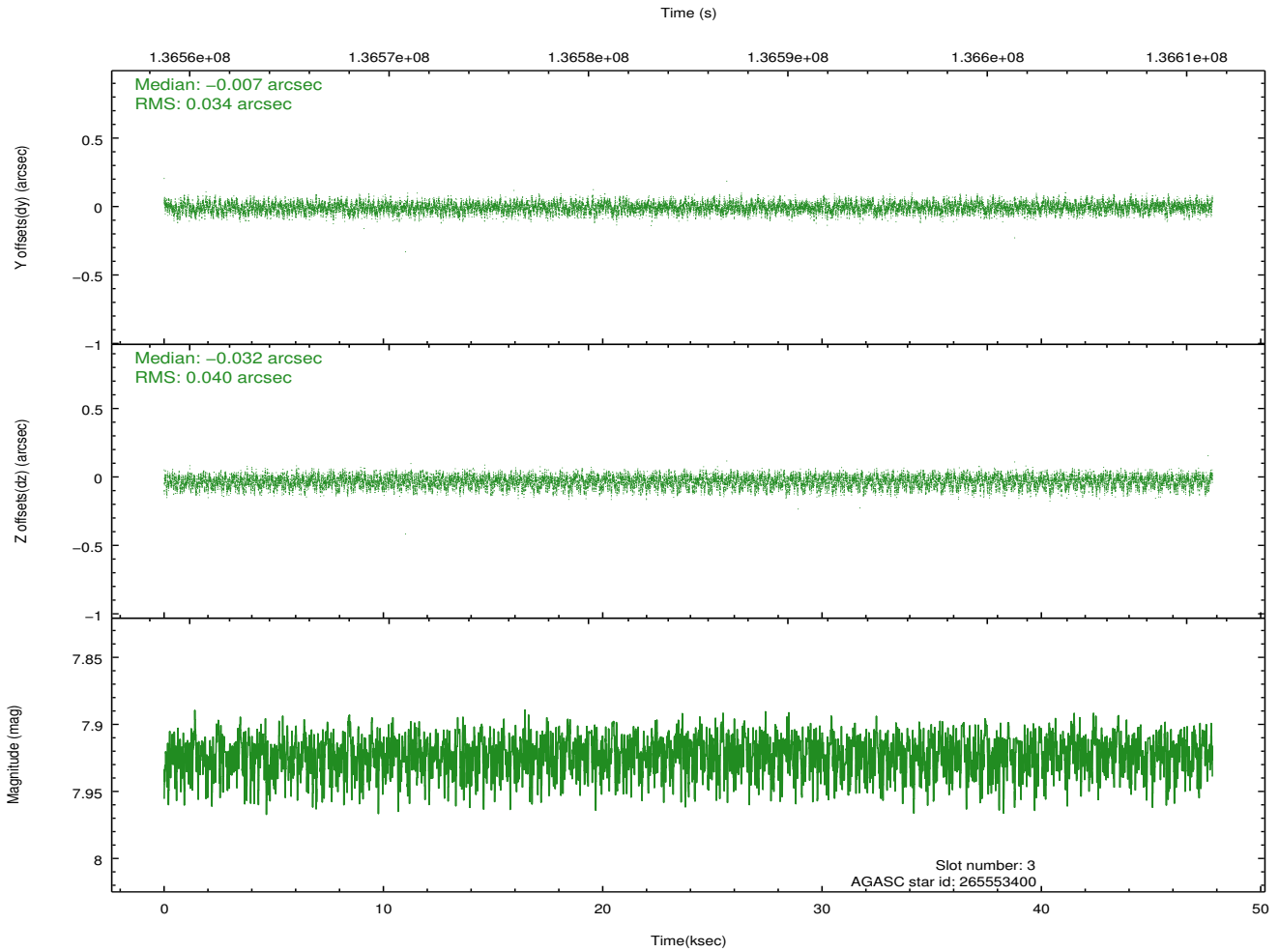
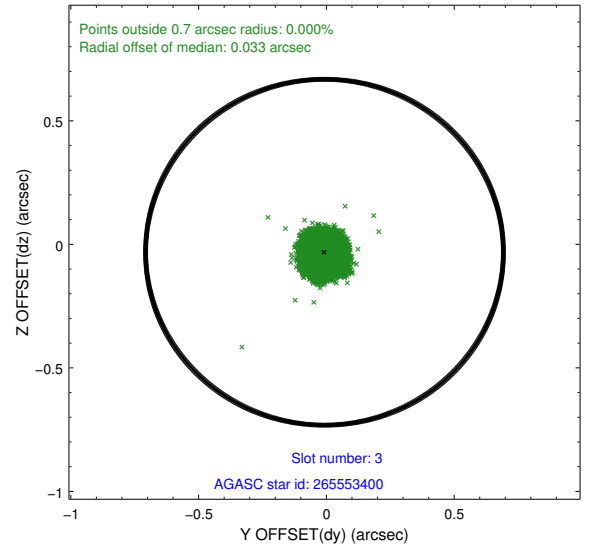
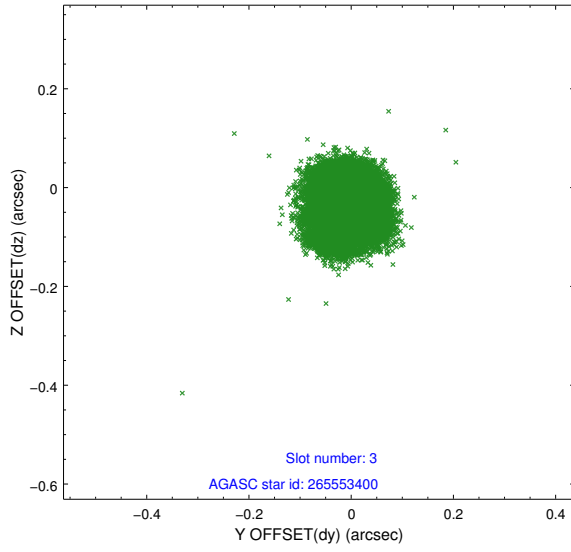


Slot Statistics

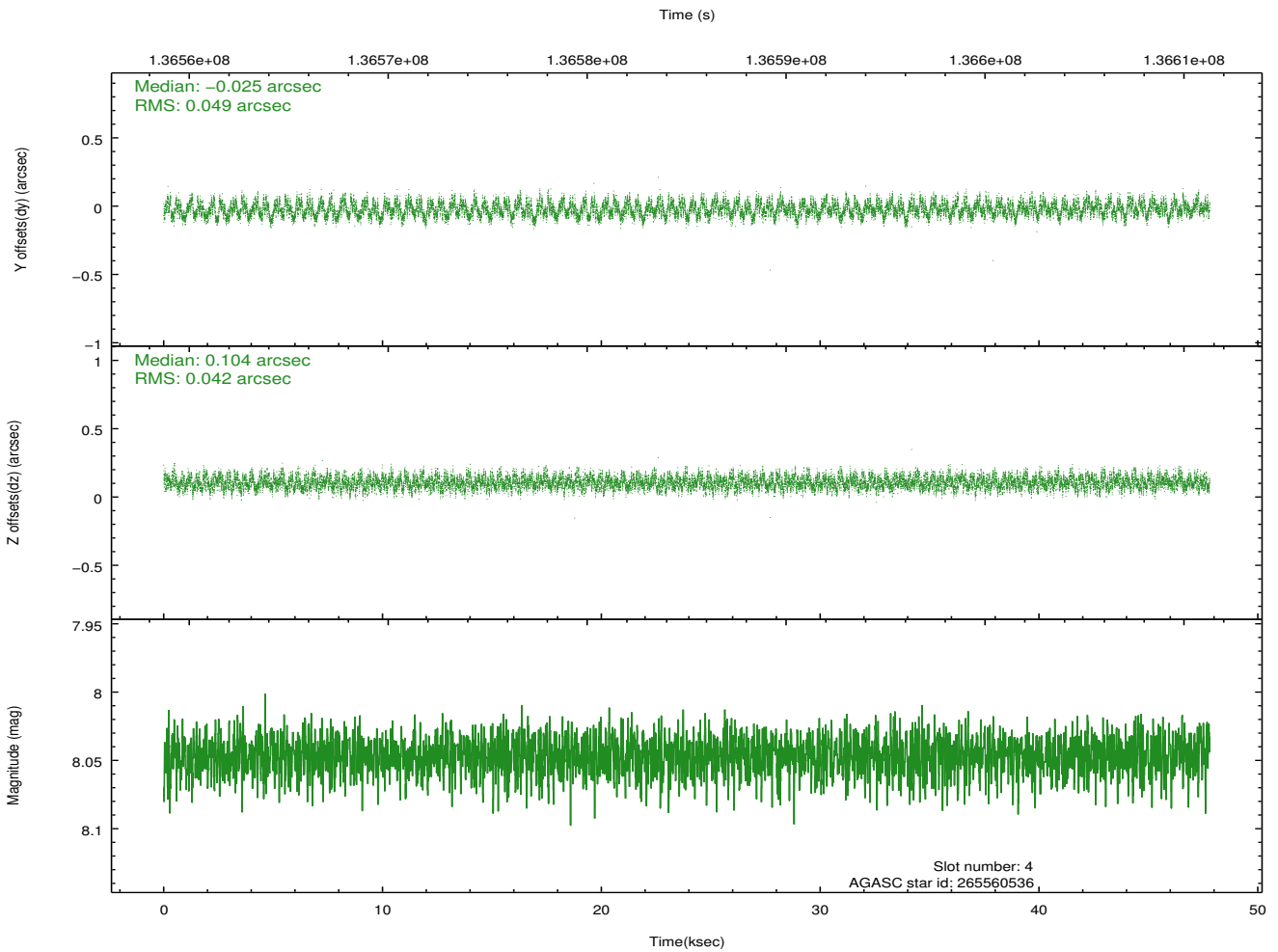
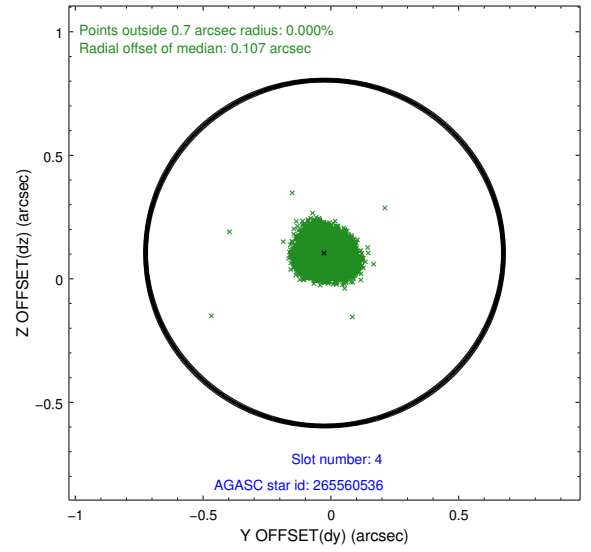
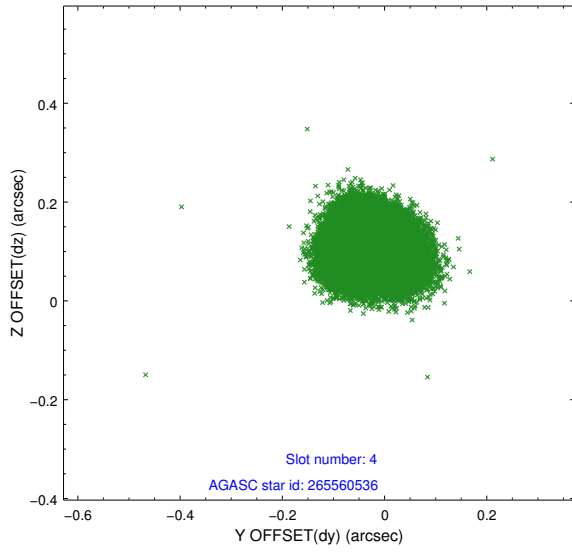
slot	status	id	mag	n_pts	med_dy	med_dz	dr1	dr2	ra	dec	mean_y	mean_z
0	FID	ACIS-S-2	7.11	11658	-0.030	0.009	0.009	0.014	0.000000	0.000000	-755.67	-1727.34
1	FID	ACIS-S-4	7.20	11658	-0.014	0.012	0.008	0.017	0.000000	0.000000	2157.59	181.22
2	FID	ACIS-S-5	7.24	11659	0.013	-0.012	0.007	0.011	0.000000	0.000000	-1808.52	174.77
3	GUIDE	265553400	7.92	23312	-0.007	-0.032	0.057	0.089	232.475560	23.817136	1071.09	1479.69
4	GUIDE	265560536	8.05	23305	-0.025	0.104	0.070	0.106	232.543821	23.755517	778.57	1599.09
5	GUIDE	265561672	8.41	23311	0.020	-0.054	0.060	0.098	233.051219	23.521427	-1090.08	1735.57
6	GUIDE	265563224	8.51	23312	0.032	0.063	0.069	0.112	233.424580	23.443962	-2334.84	1516.72
7	GUIDE	265564608	8.57	23307	-0.019	-0.081	0.068	0.107	233.145057	23.882493	-874.51	416.76

2.4 Star Slots

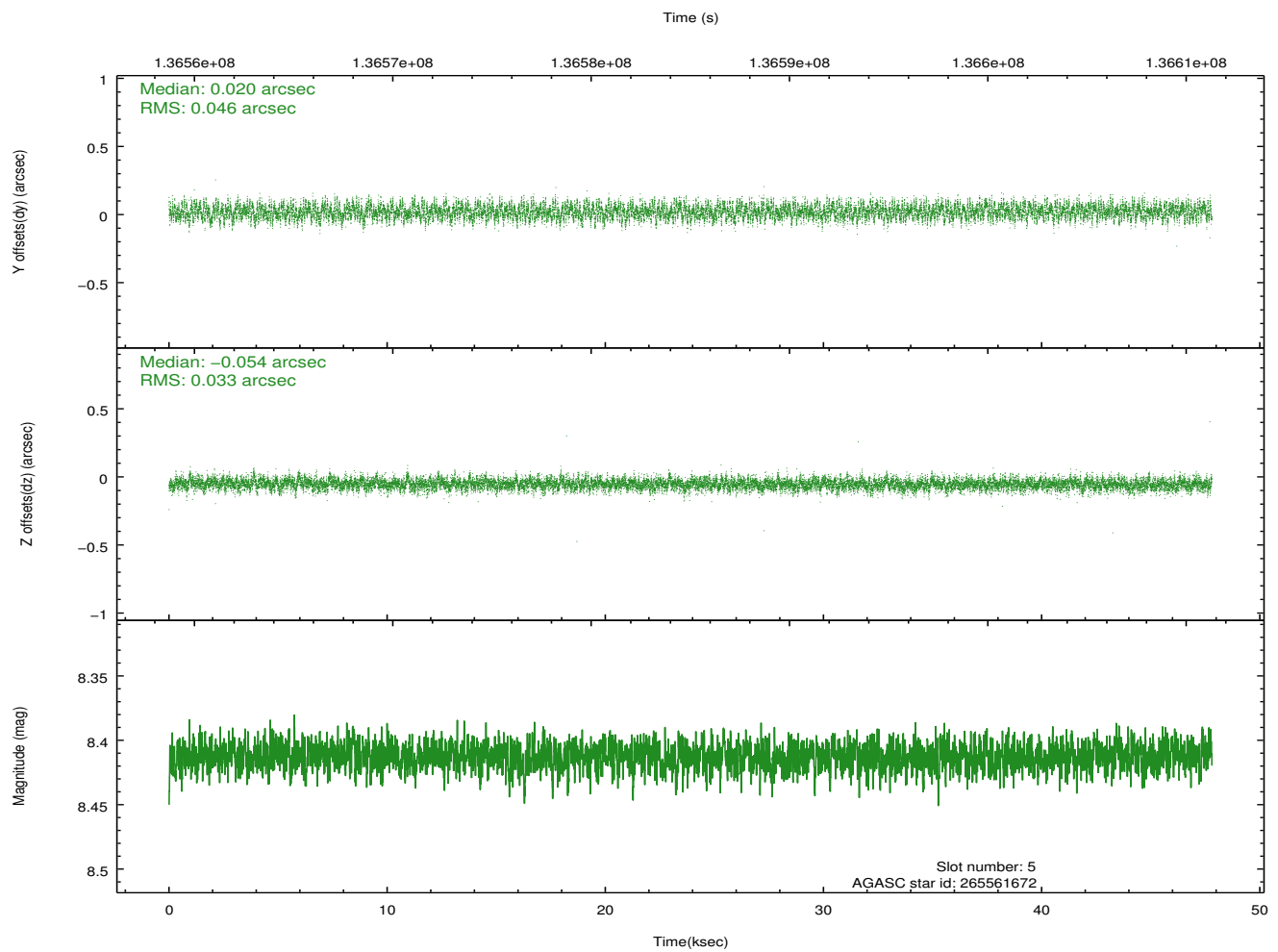
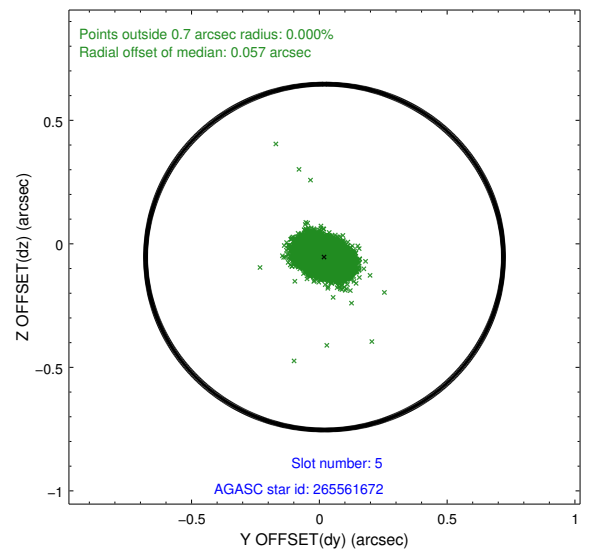
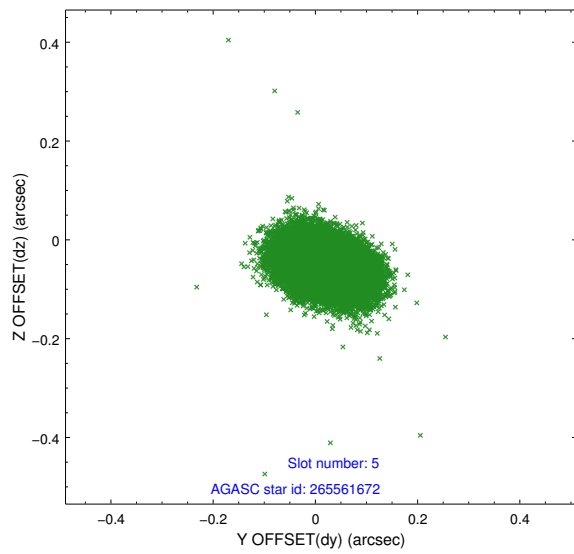
2.4.1 Slot 3



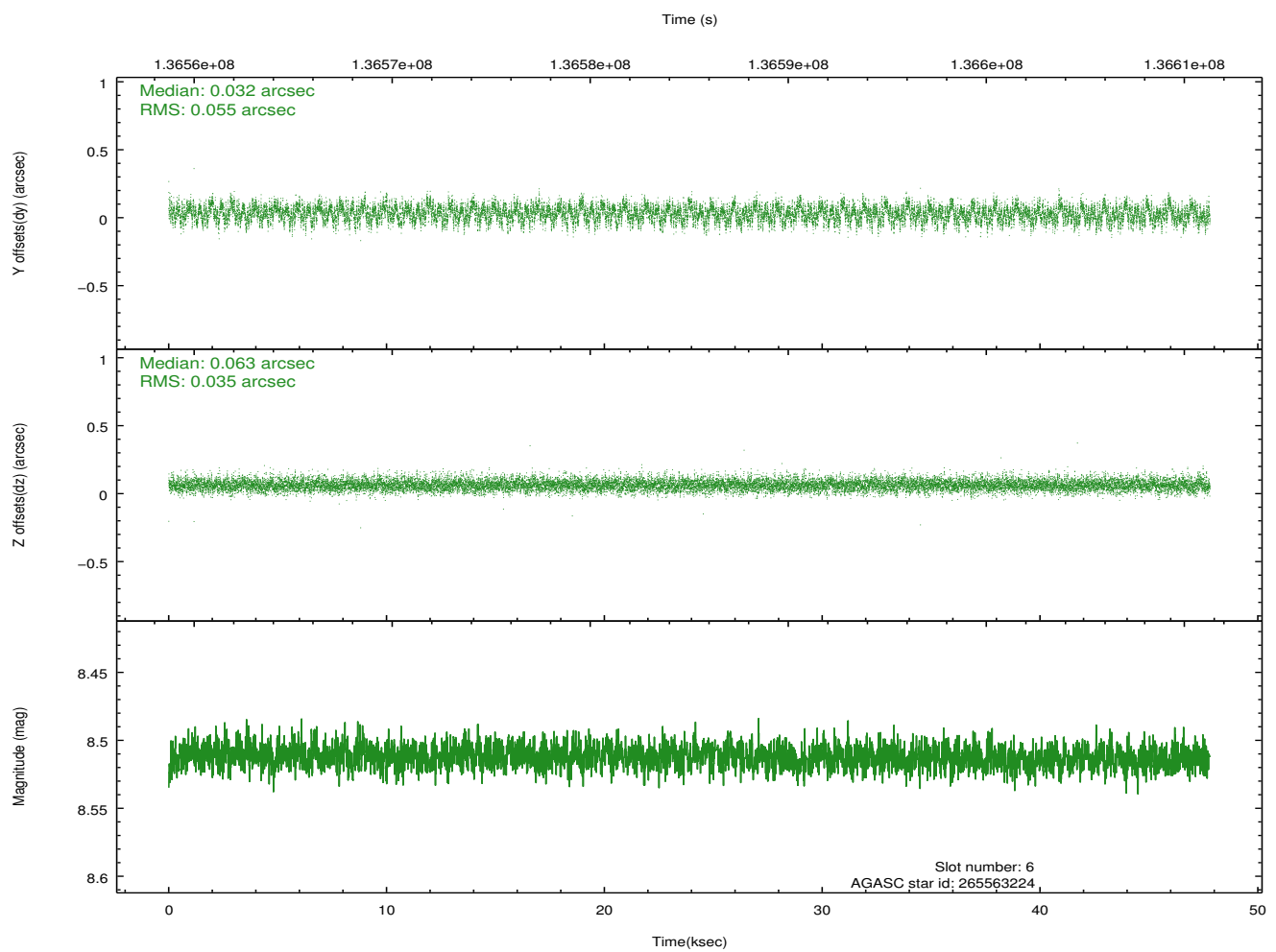
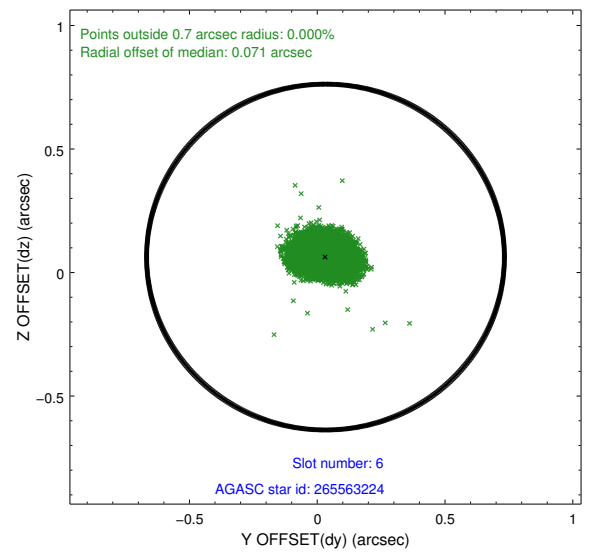
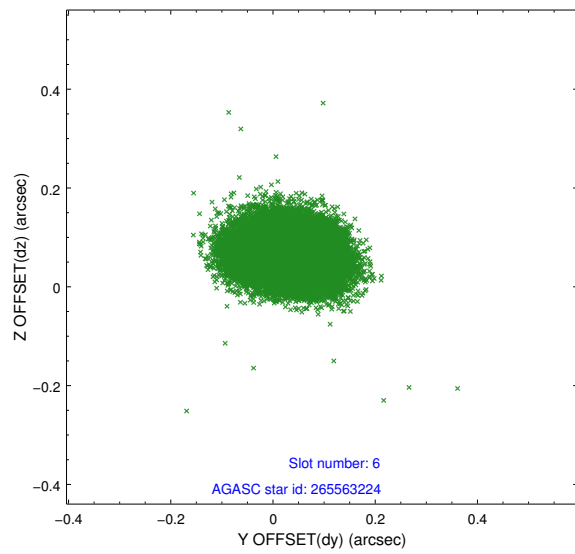
2.4.2 Slot 4



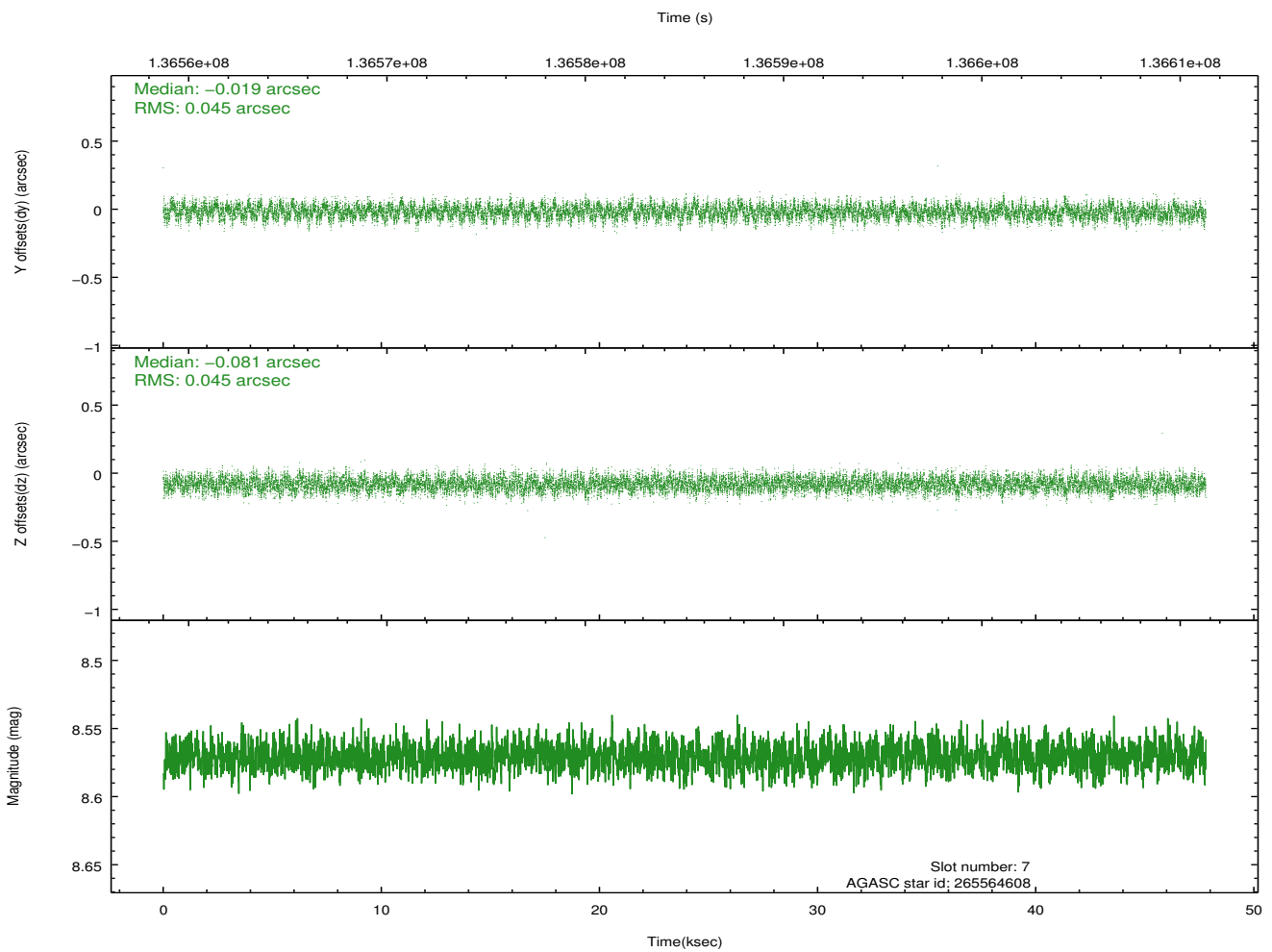
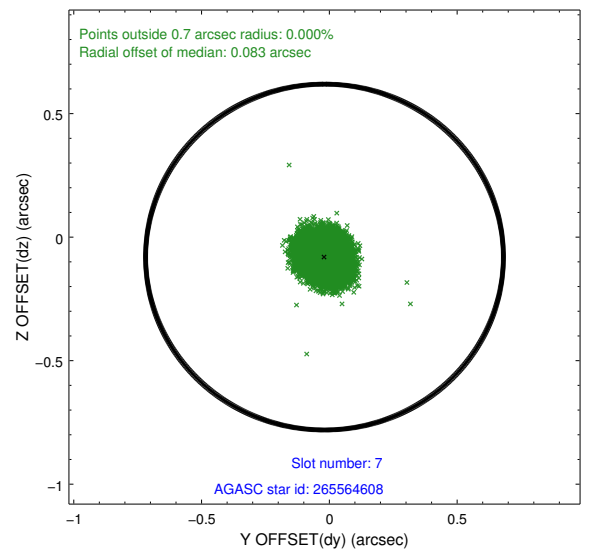
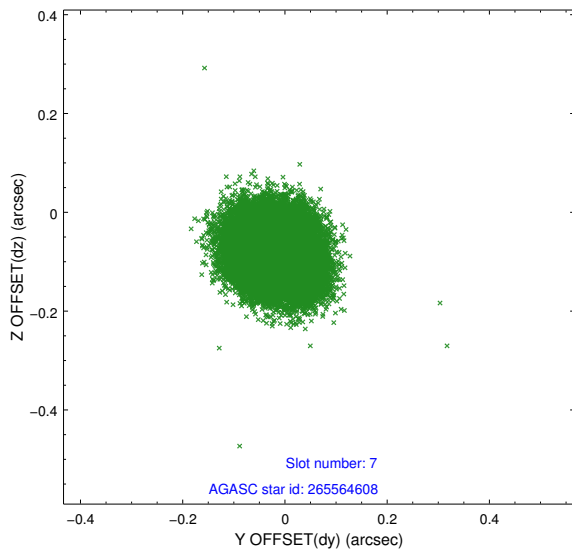
2.4.3 Slot 5



2.4.4 Slot 6

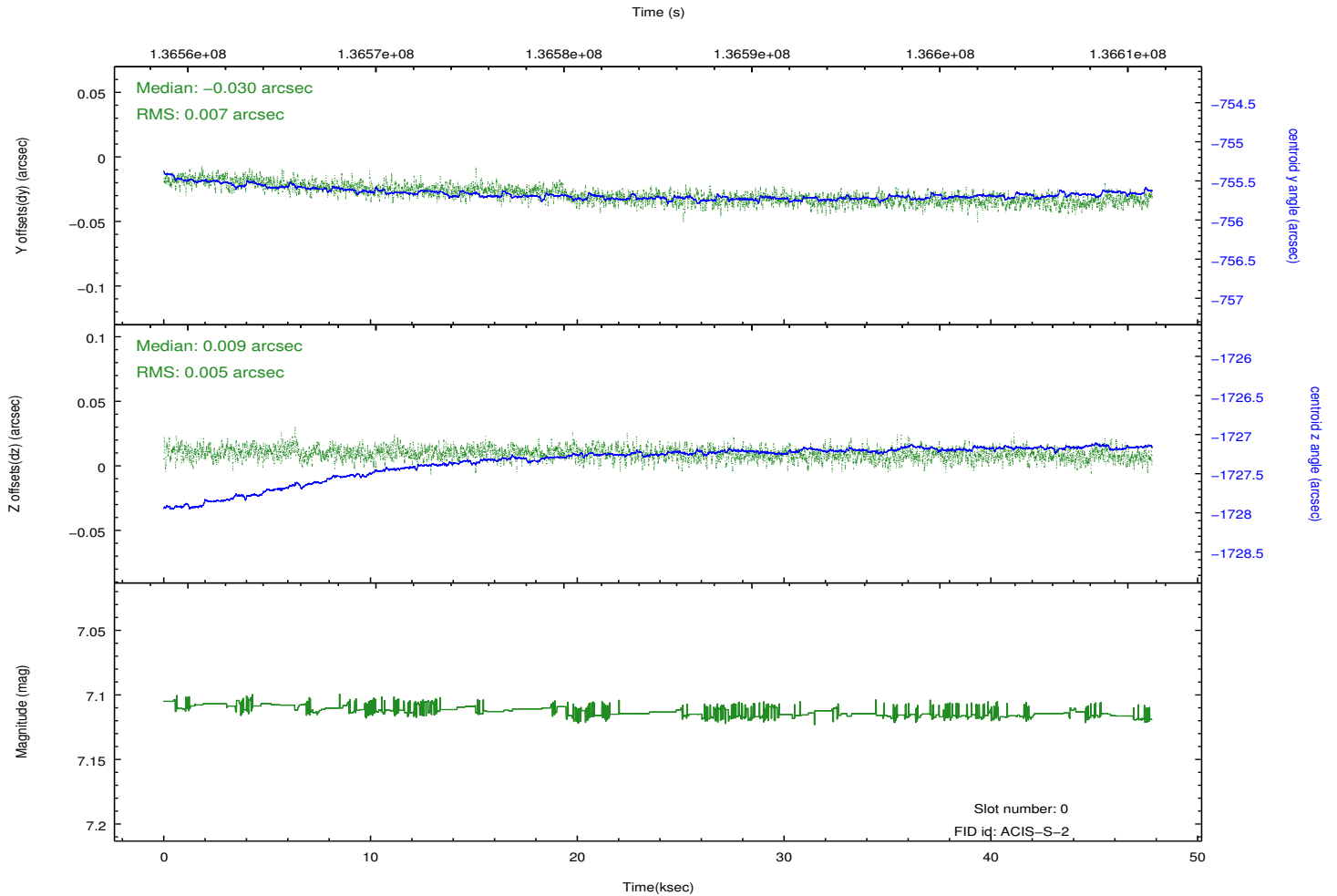
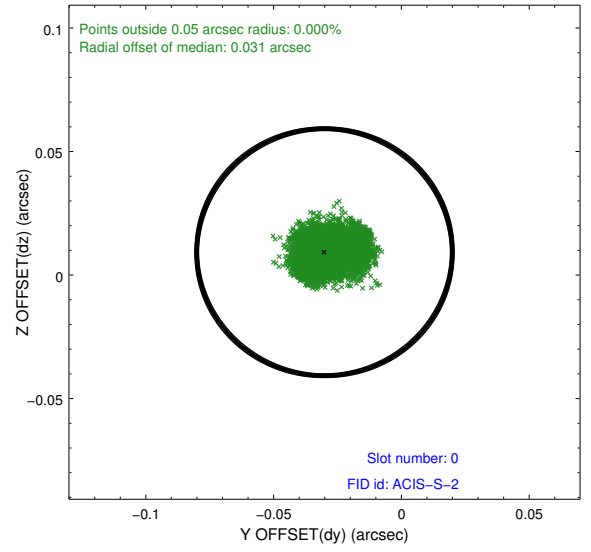
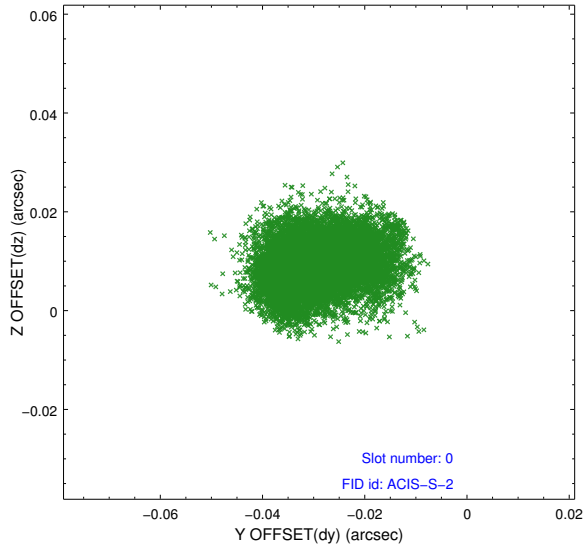


2.4.5 Slot 7

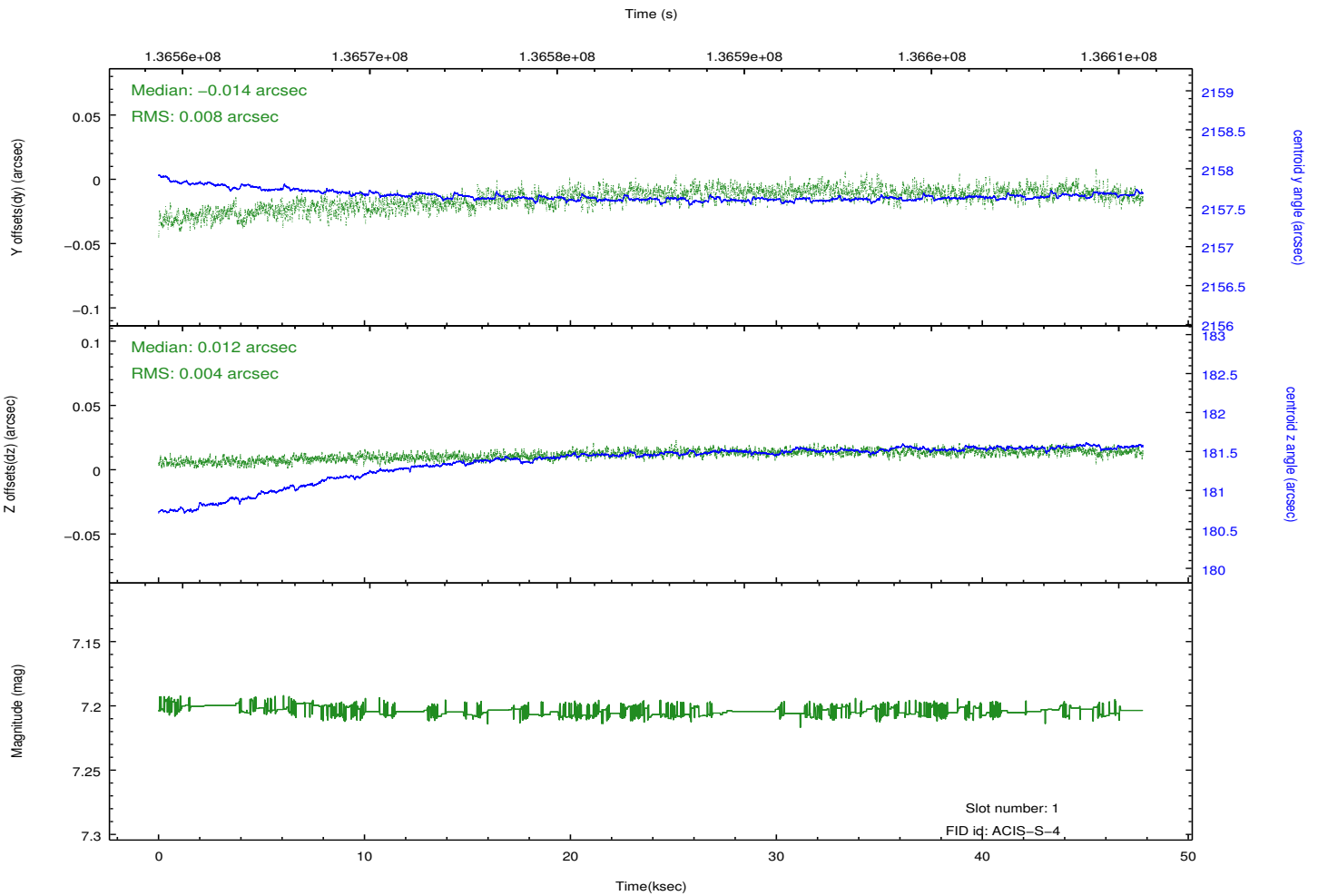
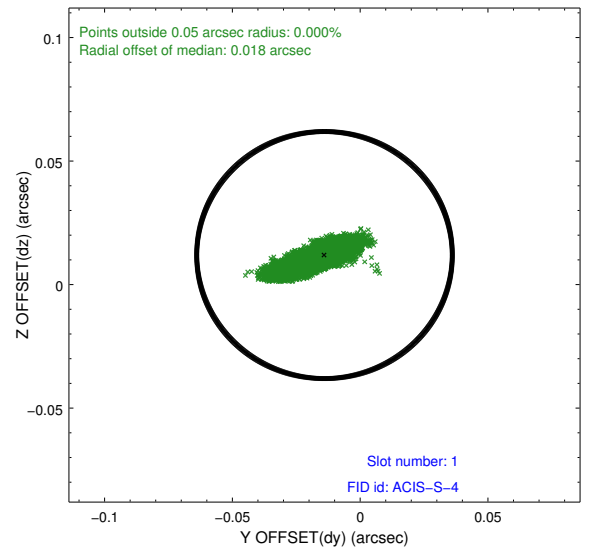
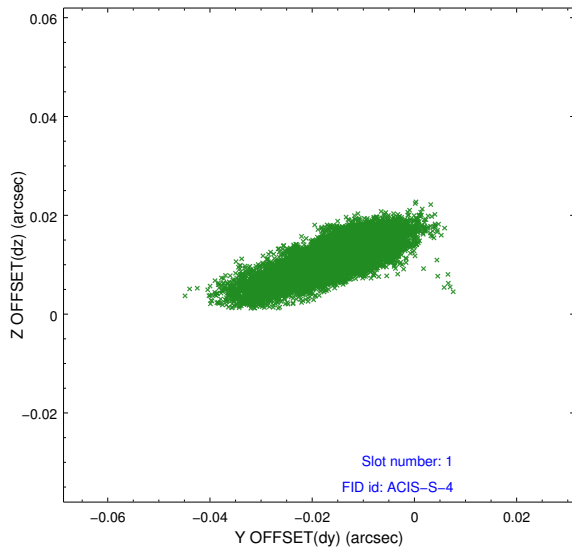


2.5 FID Slots

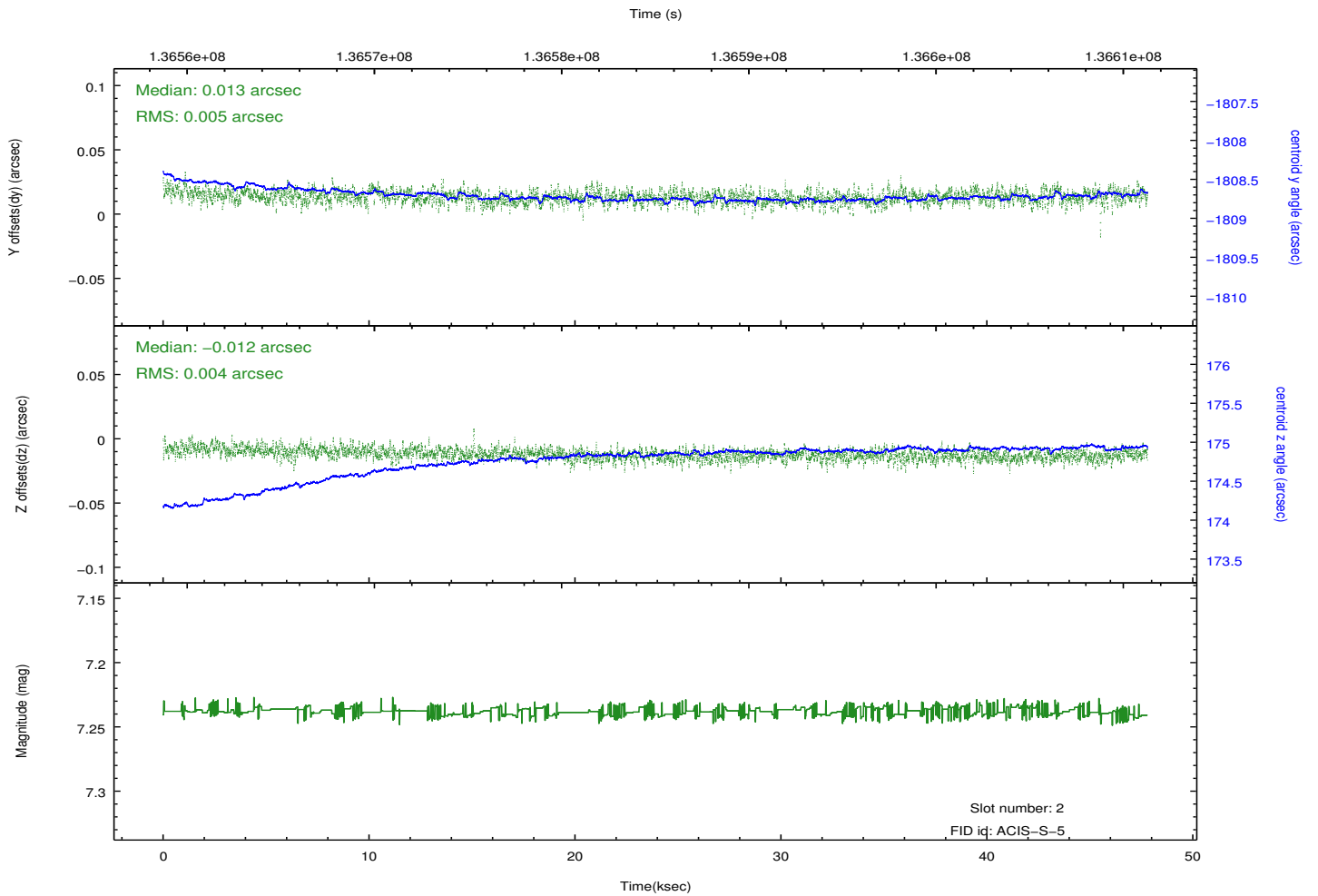
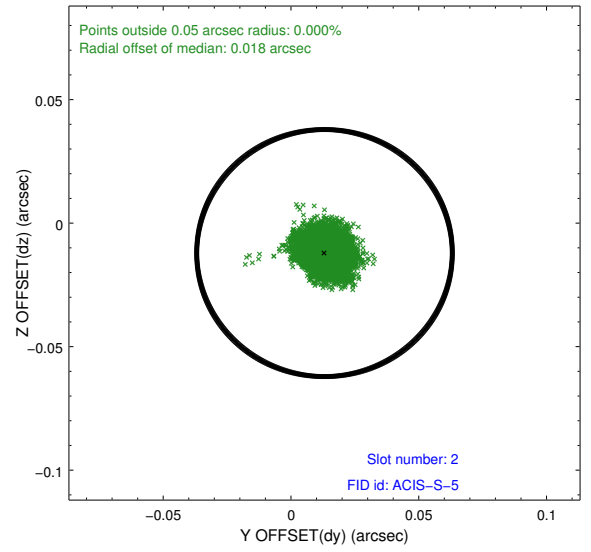
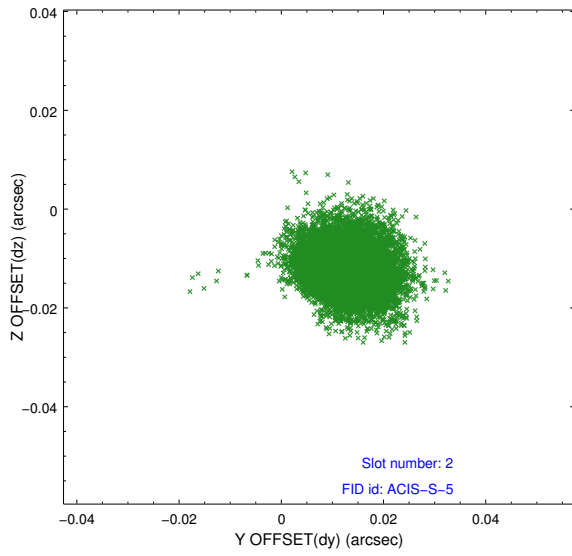
2.5.1 Slot 0



2.5.2 Slot 1



2.5.3 Slot 2



A Summary

A.1 Status

V&V Scientist	Beth Sundheim
V&V Date (YYYY-MM-DD)	2012.10.16
V&V Edition	1
V&V Disposition and Status	OK
V&V Charge Time	47.734

A.2 Comments

Roll preference met.