

V&V Reference Report

L2 ASCDS Version : 8.4.5

Observation 3218 - L2 Version 3
Chandra X-Ray Center

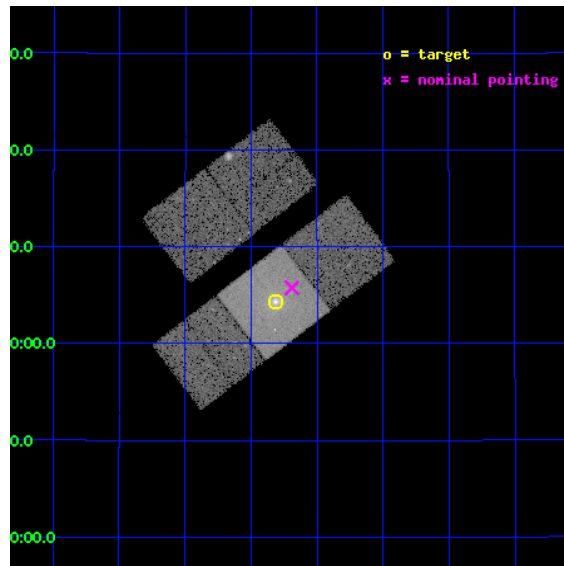
L2 Processing Date : Oct 8 2012

Contents

1	Front	2
2	OBI	3
2.1	OBI	3
2.1.1	Images	3
2.1.2	Bias	3
2.1.3	Parameters	4
2.1.4	Events	4
2.2	Compared Parameters	5
2.3	Aspect	6
2.4	Star Slots	9
2.4.1	Slot 3	9
2.4.2	Slot 4	10
2.4.3	Slot 5	11
2.4.4	Slot 6	12
2.4.5	Slot 7	13
2.5	FID Slots	14
2.5.1	Slot 0	14
2.5.2	Slot 1	15
2.5.3	Slot 2	16
A	Summary	17
A.1	Status	17
A.2	Comments	17

1 Front

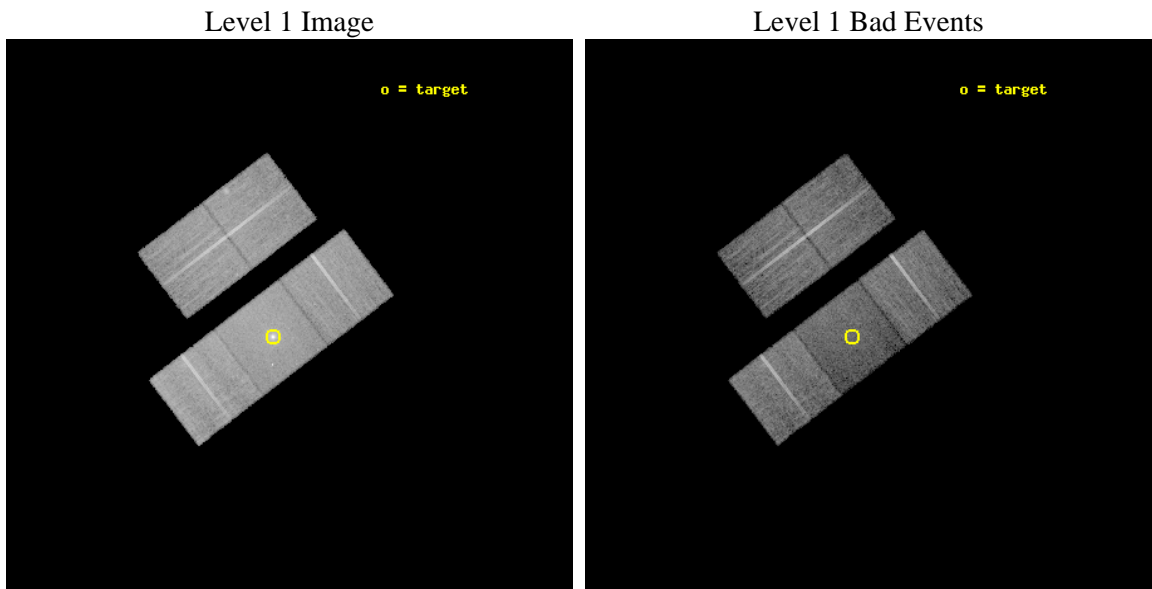
seq_num	800218	Sequence number
obs_id	3218	Observation id
title	FOSSIL GROUPS IN THE LOCAL UNIVERSE	Proposal title
observer	Prof Trevor Ponman	Principal investigator
object	NGC 6482	Source name
dtcycle	0	
cycle	P	events from which exps? Prim/Second/Both
ra_targ	267.95375	Observer's specified target RA [deg]
dec_targ	23.071944	Observer's specified target Dec [deg]
ra_nom	267.92264173666	Nominal RA [deg]
dec_nom	23.096046860132	Nominal Dec [deg]
roll_nom	142.62645065756	Nominal Roll [deg]
revision	3	Processing version of data
ontime	19604.399962276	Sum of GTIs [s]
livetime	19348.25404422	Livetime [s]
ontime2	19604.399962276	Sum of GTIs [s]
ontime3	19604.399962276	Sum of GTIs [s]
ontime6	19598.118021756	Sum of GTIs [s]
ontime7	19604.399962276	Sum of GTIs [s]
ontime8	19601.258992046	Sum of GTIs [s]
l2events	107467	Number of level 2 events



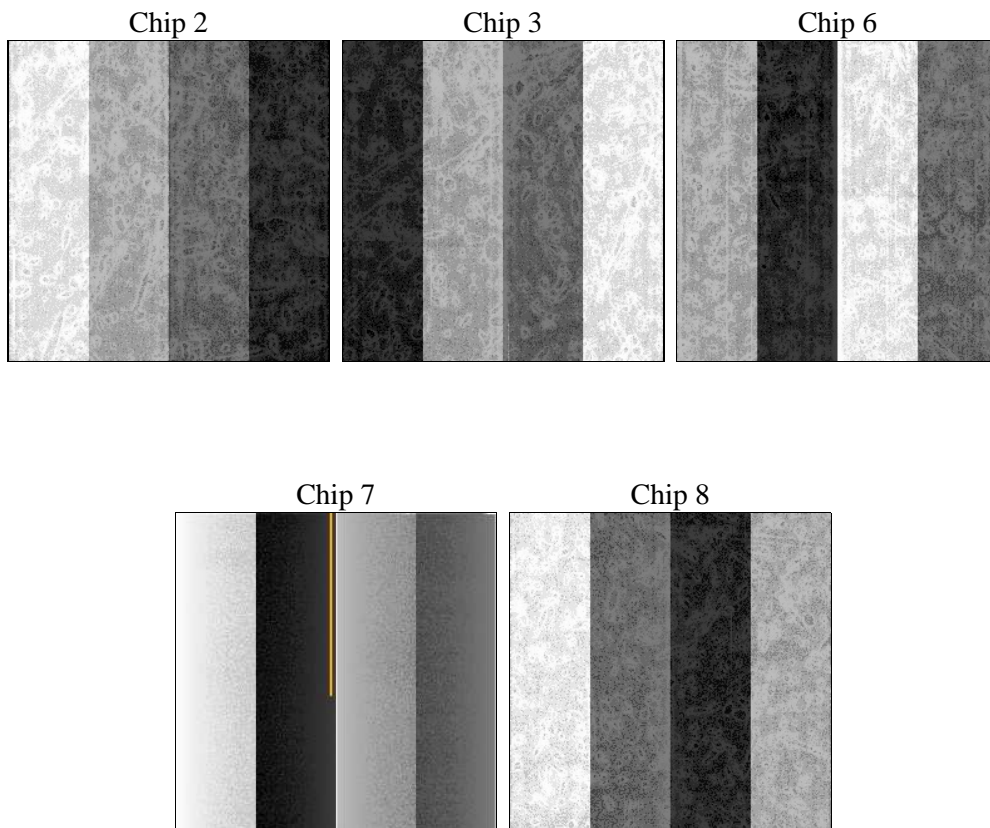
2 OBI

2.1 OBI

2.1.1 Images



2.1.2 Bias



2.1.3 Parameters

obi_num	0	Obi number	sched_exp_time	19500.000000	[s] Scheduled observation exposure time
ascdsver	8.4.5	Processing system revision	ontime	19604.399962276	Sum of GTIs [s]
caldbver	4.5.2	 	ontime2	19604.399962276	Sum of GTIs [s]
date	2012-10-08T05:42:20	Date and time of file creation	ontime3	19604.399962276	Sum of GTIs [s]
revision	3	Processing version of data	ontime6	19598.118021756	Sum of GTIs [s]
			ontime7	19604.399962276	Sum of GTIs [s]
			ontime8	19601.258992046	Sum of GTIs [s]
			l1events	566117	Number of level 1 events

2.1.4 Events

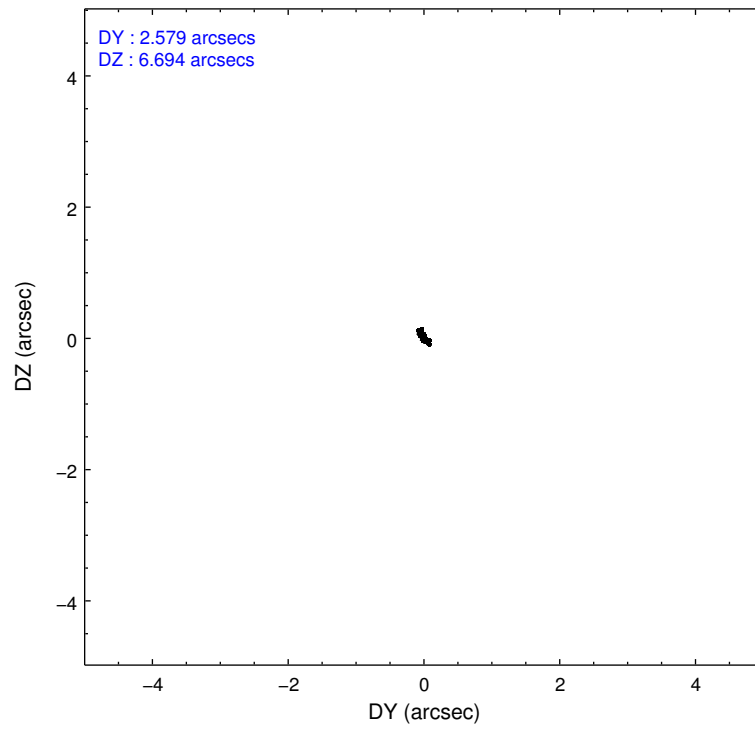
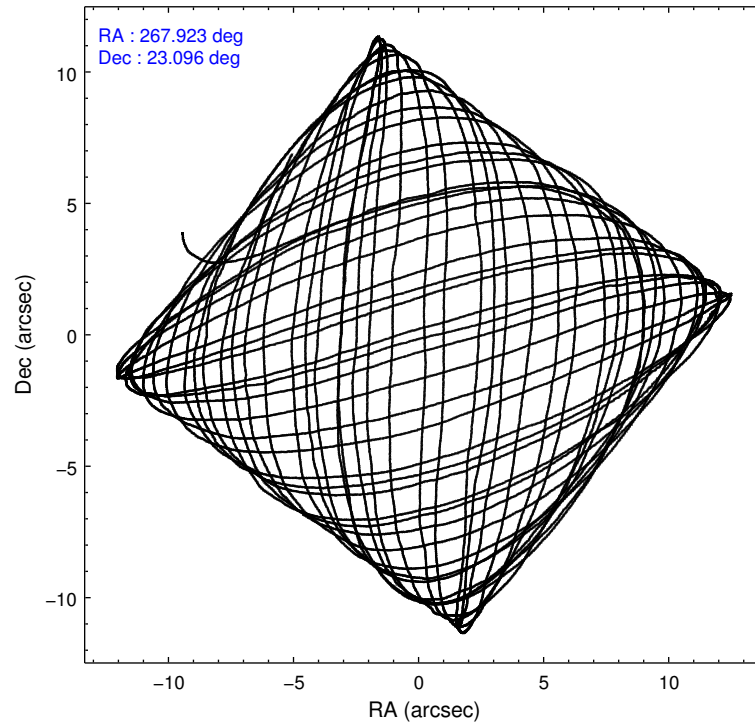
	ccd 2	ccd 3	ccd 6	ccd 7	ccd 8
level 1 events	102886	103785	105257	123320	130869
rejected events	90032	91933	91853	60012	99846
rejected %	87%	88%	87%	48%	76%

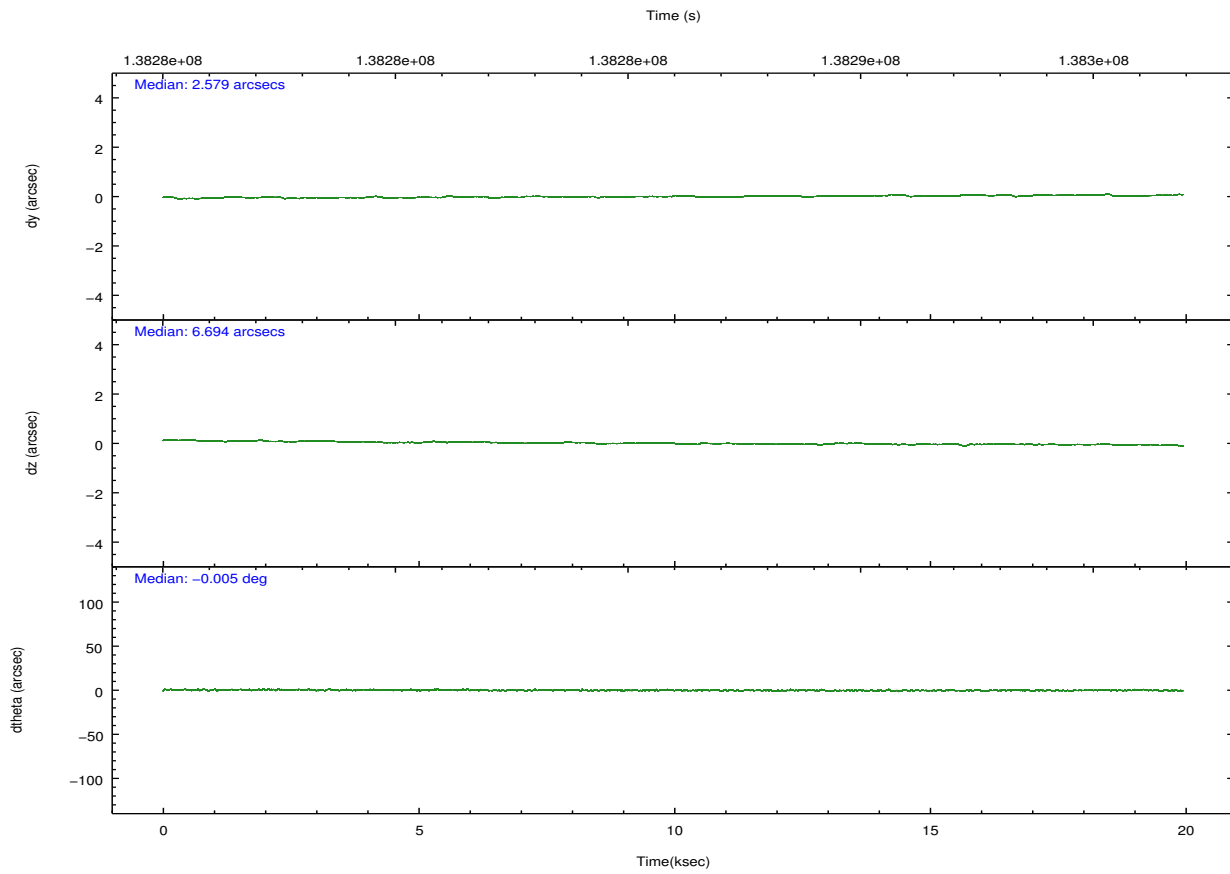
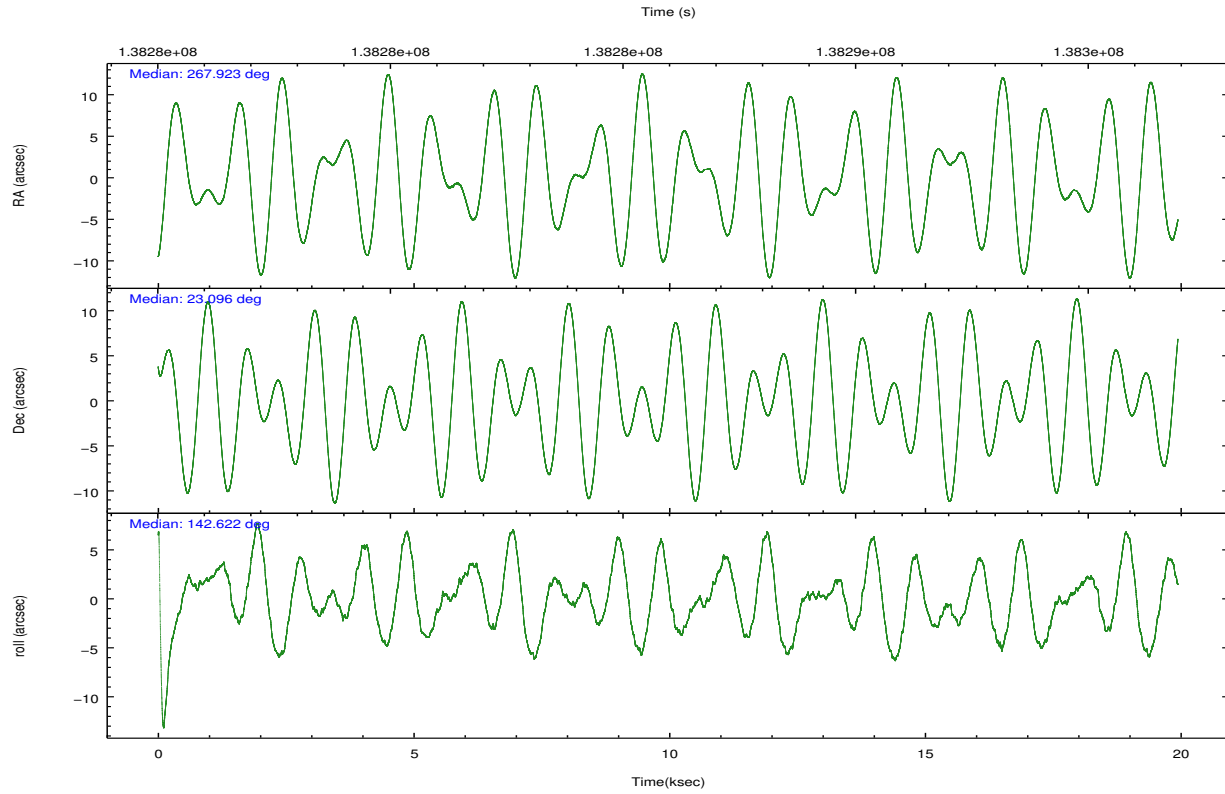
	ccd 2	ccd 3	ccd 6	ccd 7	ccd 8
grade 0 events	5113	4365	4851	9612	9788
	4%	4%	4%	7%	7%
grade 1 events	44	45	50	97	87
	0%	0%	0%	0%	0%
grade 2 events	2594	2413	2634	13371	6485
	2%	2%	2%	10%	4%
grade 3 events	1239	1175	1303	6311	3372
	1%	1%	1%	5%	2%
grade 4 events	1245	1241	1357	6282	3082
	1%	1%	1%	5%	2%
grade 5 events	3050	3667	3869	11677	5231
	2%	3%	3%	9%	3%
grade 6 events	2666	2667	3266	27739	8330
	2%	2%	3%	22%	6%
grade 7 events	86935	88212	87927	48231	94494
	84%	84%	83%	39%	72%

2.2 Compared Parameters

Parameter	Planned	Actual	Parameter	Planned	Actual
Instrument	ACIS	ACIS	Obspar format version number	7	7
Detector	ACIS-23678	ACIS-23678	Obspar file type	PREDICTED	ACTUAL
Grating	NONE	NONE	Obspar update status	NONE	UPDATED
Data mode	VFAINT	VFAINT	Number of optional ACIS chips dropped	0	0
Observation mode	POINTING	POINTING	On-chip summing requested	N	N
[deg] Pointing RA	267.952068	267.9226417366609	Subarray requested	NONE	NONE
[deg] Pointing Dec	23.092897	23.09604686013224	Alternating exposures requested	N	N
[deg] Pointing Roll	142.458263	142.6264506575585	[s] Primary exposure time	0.000000	3.1
[mm] SIM focus pos	-0.684267	-0.6828225247311905			
[mm] SIM defocus	0	0.001444936568705701			
[mm] SIM translation stage pos	-190.132523	-190.1400660498719			
[mm] SIM translation stage offset	0	0.00754346686406393			
[s] Observation start time (MET)	138276436.184000	138275346.81204			
Observation start date	2002-05-20T10:06:12	2002-05-20T09:49:06			
[s] Observation end time (MET)	138295936.184000	138296447.4629			
Observation end date	2002-05-20T15:31:12	2002-05-20T15:40:47			
Read mode	TIMED	TIMED			

2.3 Aspect



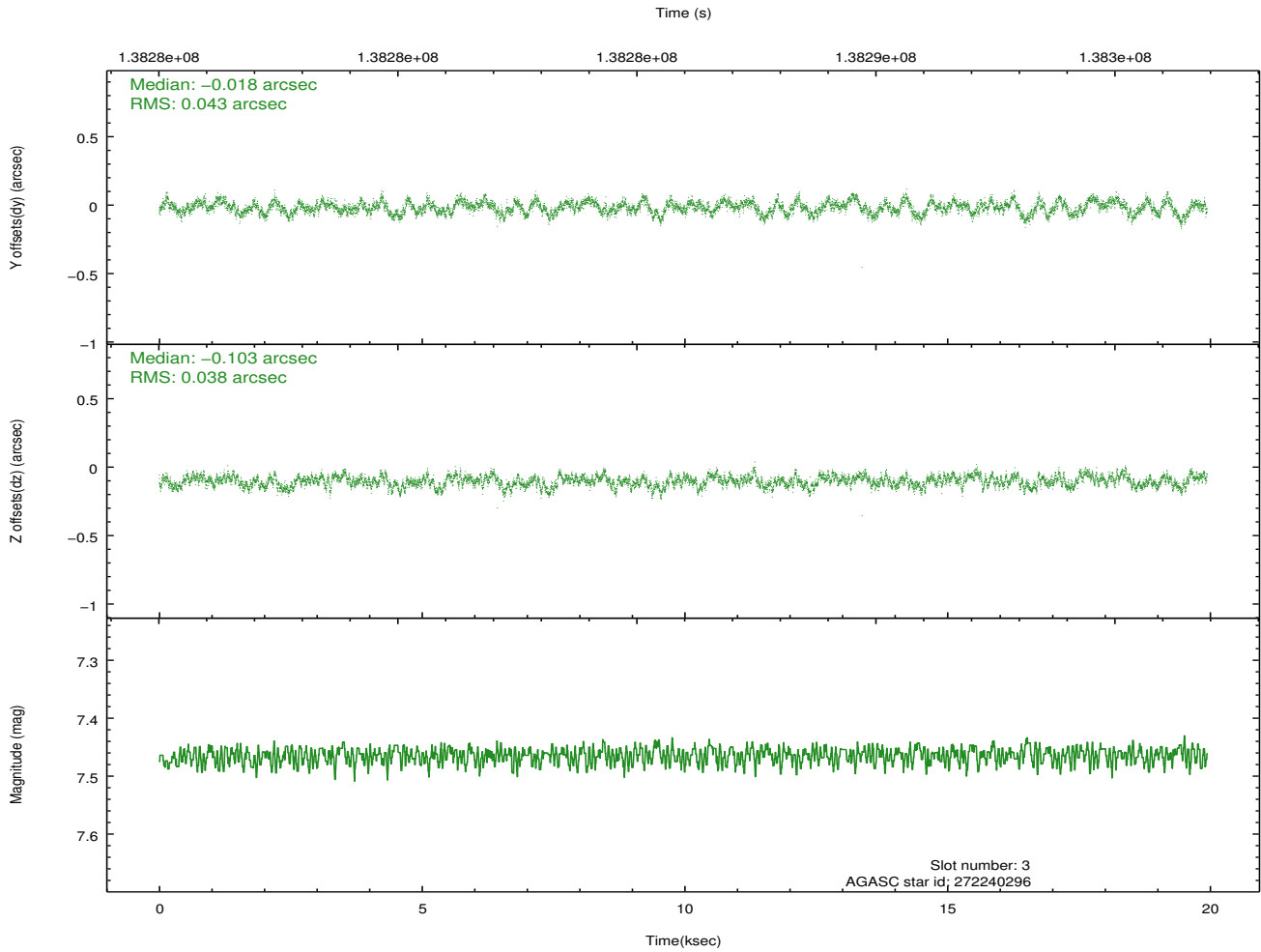
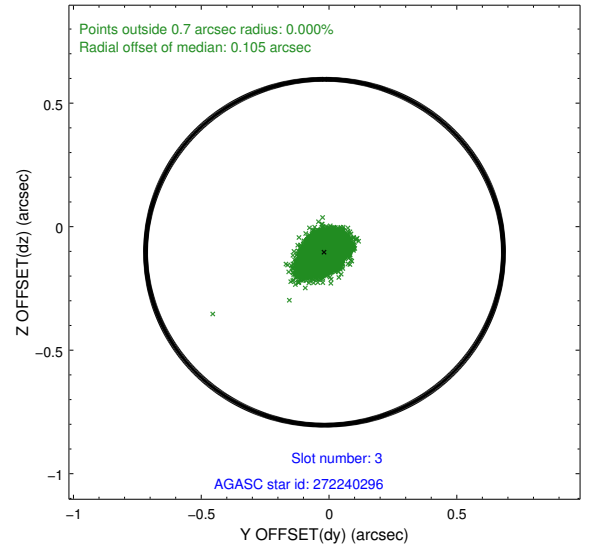
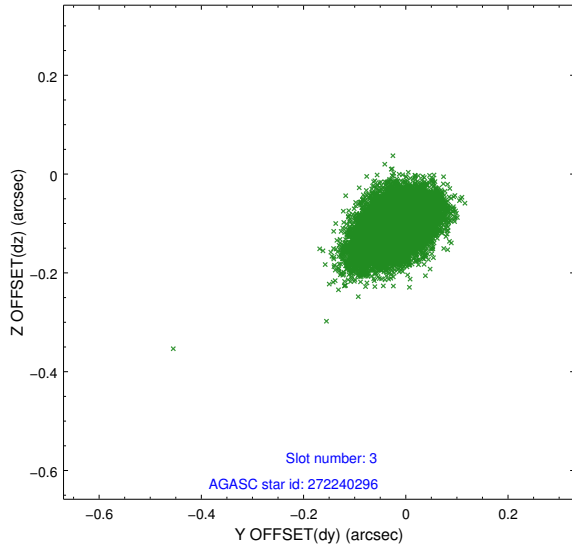


Slot Statistics

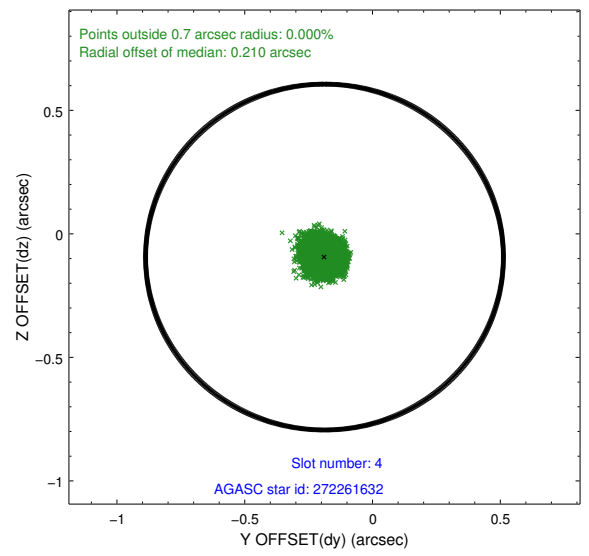
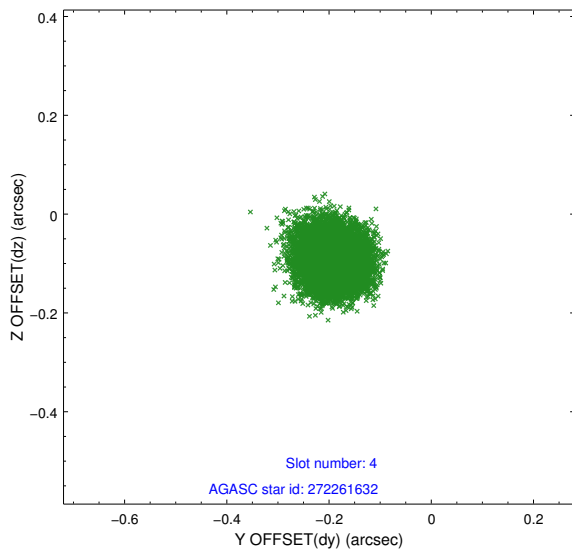
slot	status	id	mag	n_pts	med_dy	med_dz	dr1	dr2	ra	dec	mean_y	mean_z
0	FID	ACIS-S-1	7.19	4864	0.022	-0.053	0.006	0.010	0.000000	0.000000	940.84	-1723.55
1	FID	ACIS-S-5	7.24	4865	0.001	0.026	0.006	0.011	0.000000	0.000000	-1808.06	173.91
2	FID	ACIS-S-6	7.35	4864	-0.044	0.039	0.007	0.012	0.000000	0.000000	406.14	818.08
3	GUIDE	272240296	7.46	9729	-0.018	-0.103	0.061	0.098	267.638660	23.255916	1180.09	165.46
4	GUIDE	272261632	8.37	9726	-0.188	-0.094	0.052	0.085	267.202505	22.973470	1711.53	1849.90
5	GUIDE	273947824	8.61	9726	-0.087	0.308	0.086	0.132	268.209705	23.776027	826.20	-2467.18
6	GUIDE	273948672	8.87	9726	0.076	0.120	0.085	0.136	268.631849	23.232305	-1473.93	-1772.56
7	GUIDE	205000152	9.81	9720	0.215	-0.228	0.141	0.229	267.973406	22.335042	-1719.03	2119.53

2.4 Star Slots

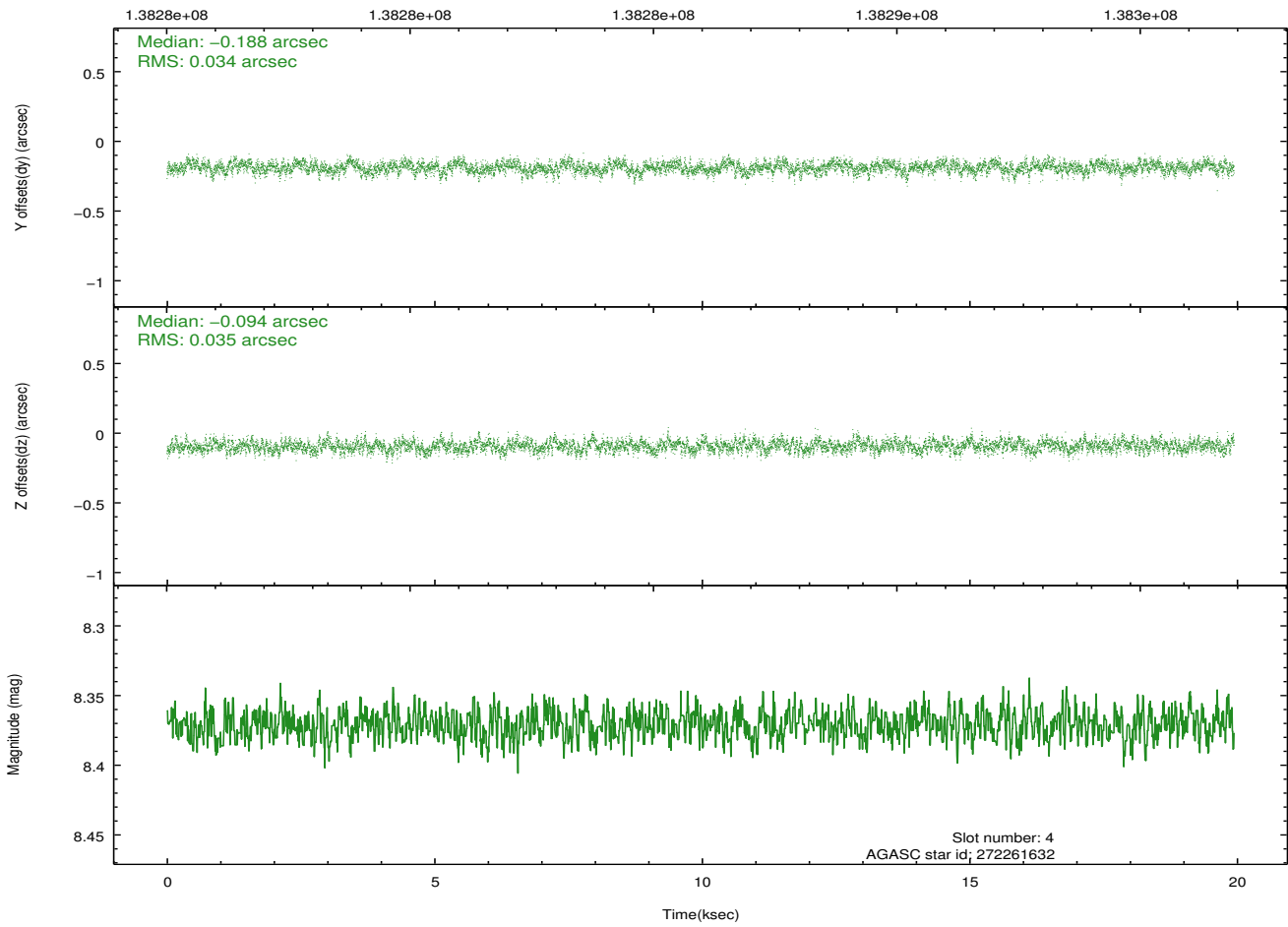
2.4.1 Slot 3



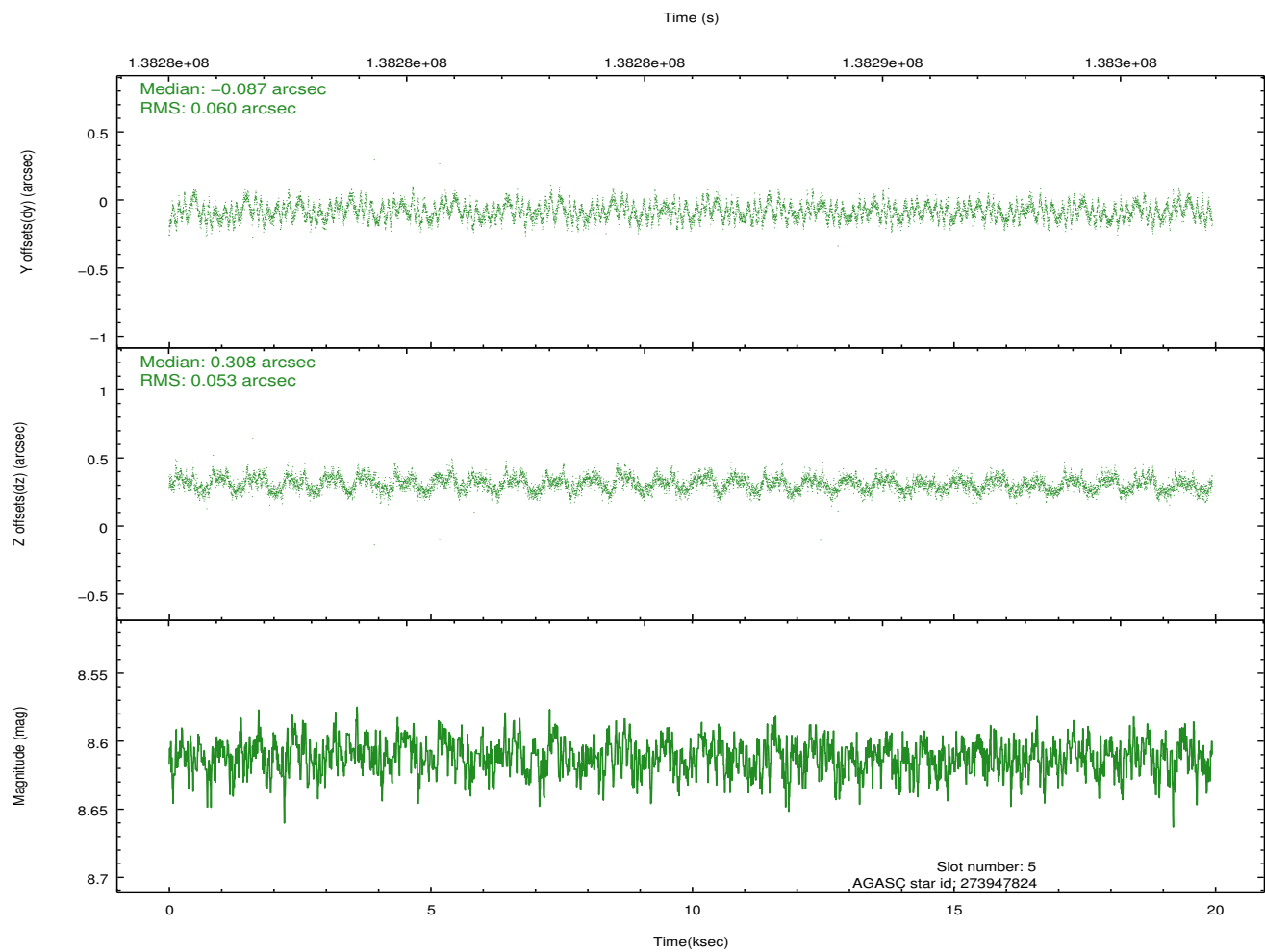
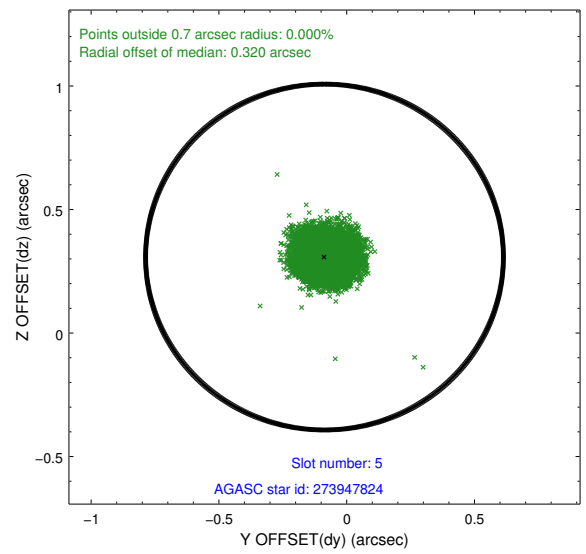
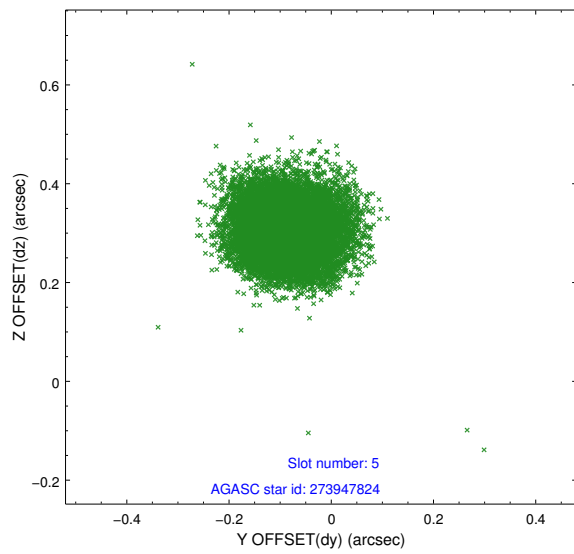
2.4.2 Slot 4



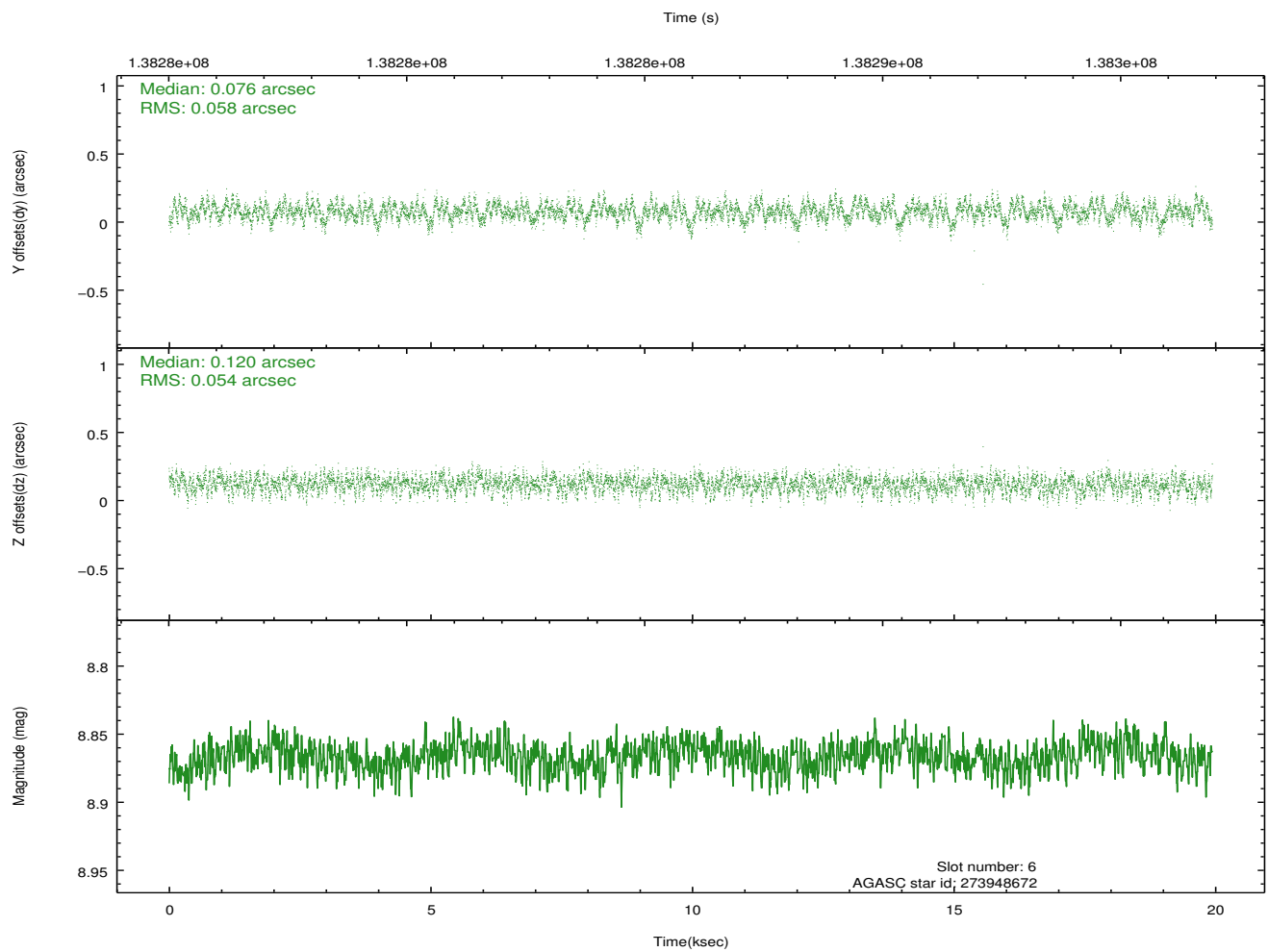
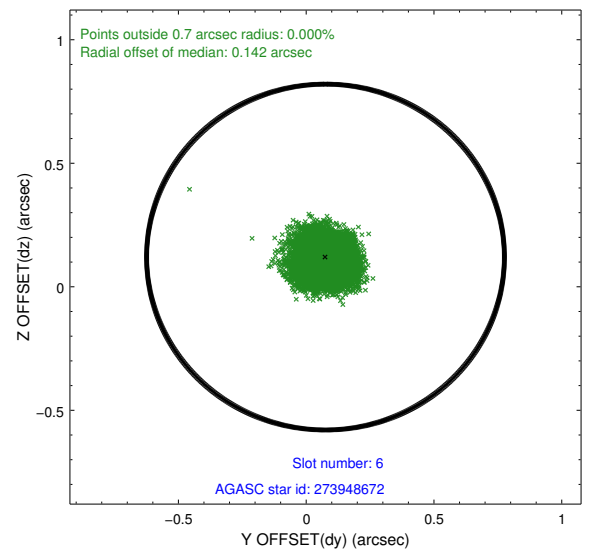
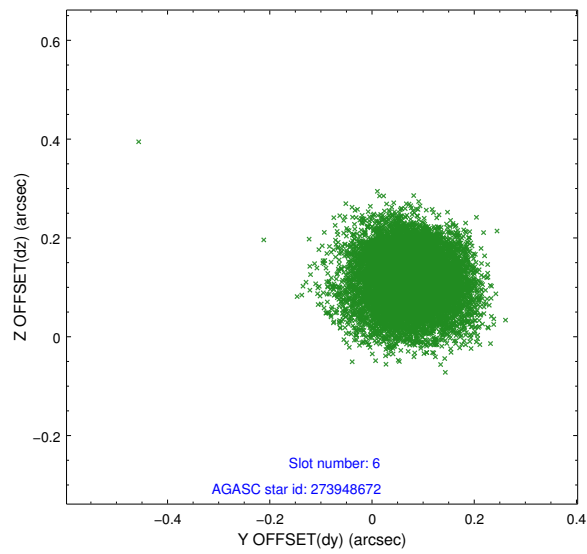
Time (s)



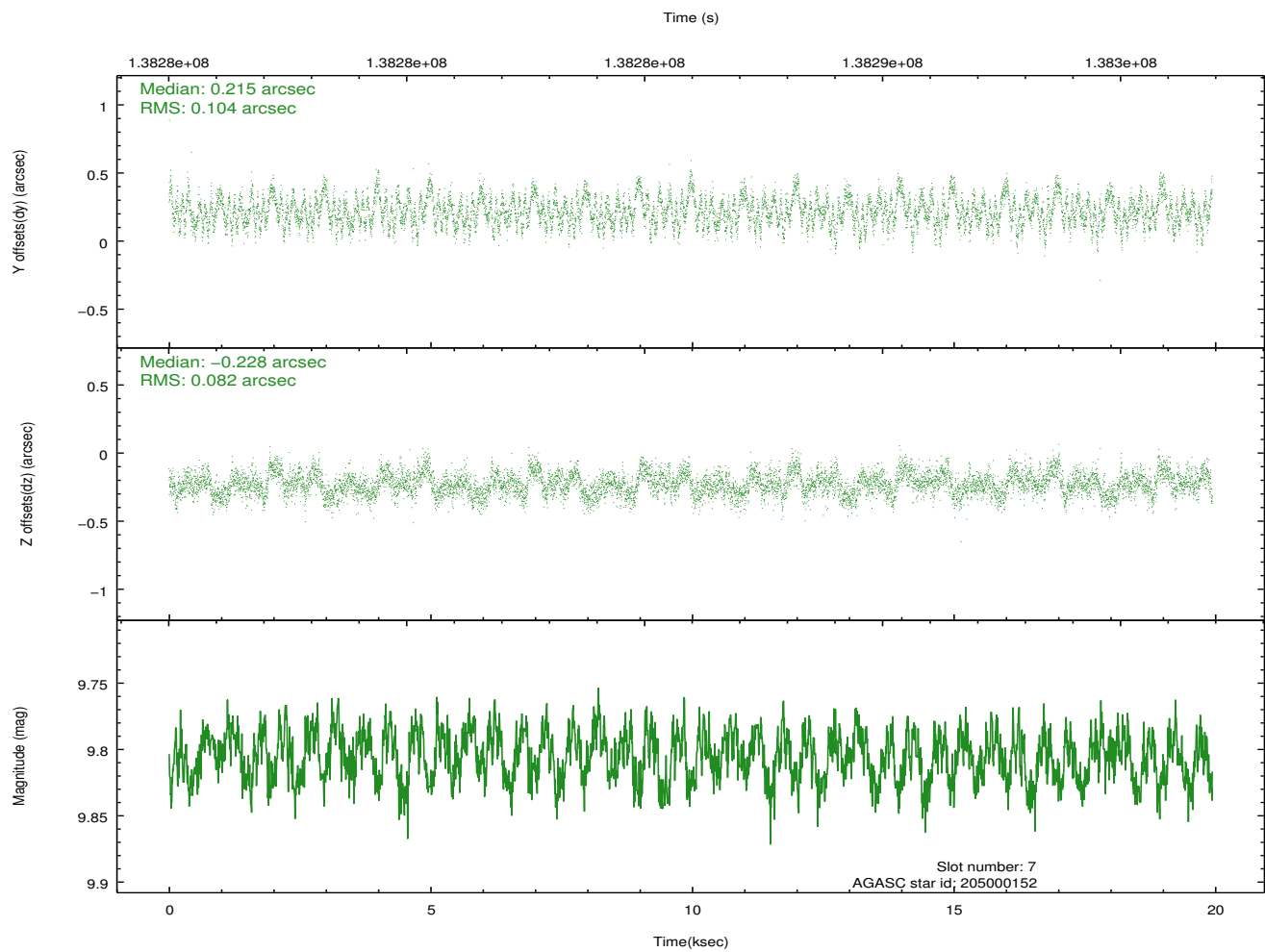
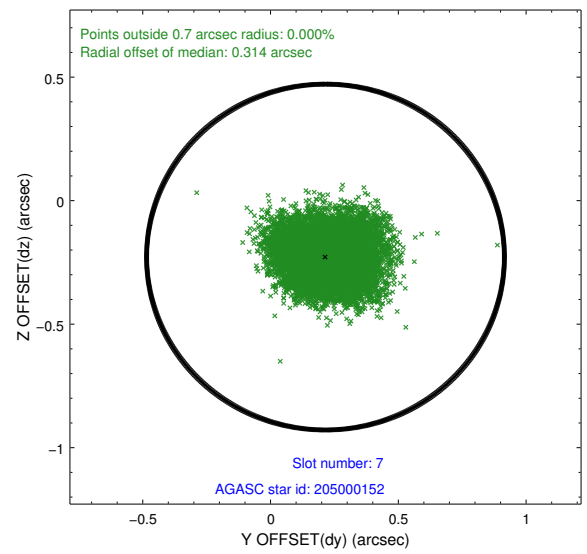
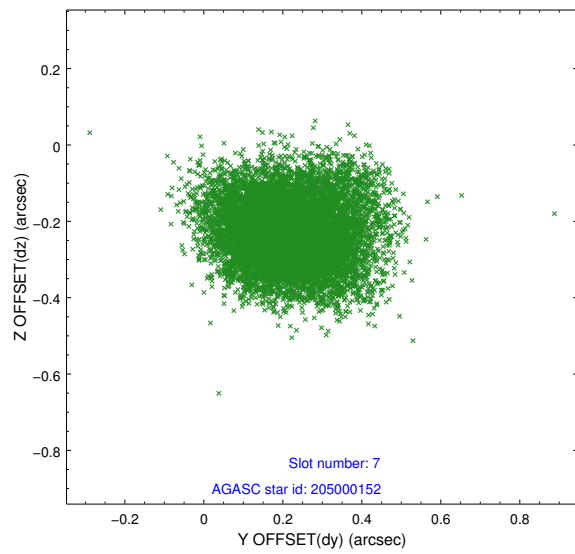
2.4.3 Slot 5



2.4.4 Slot 6

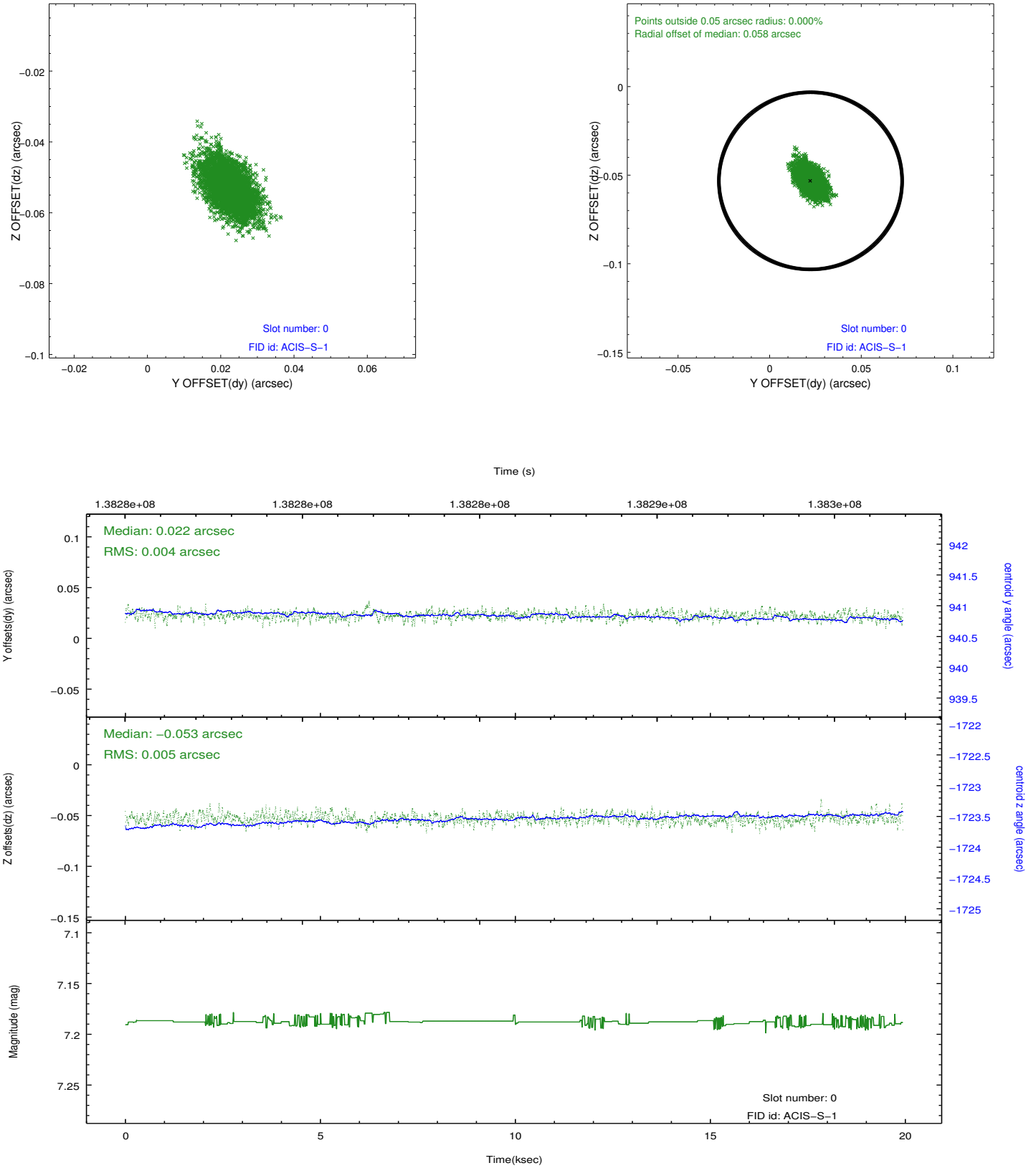


2.4.5 Slot 7

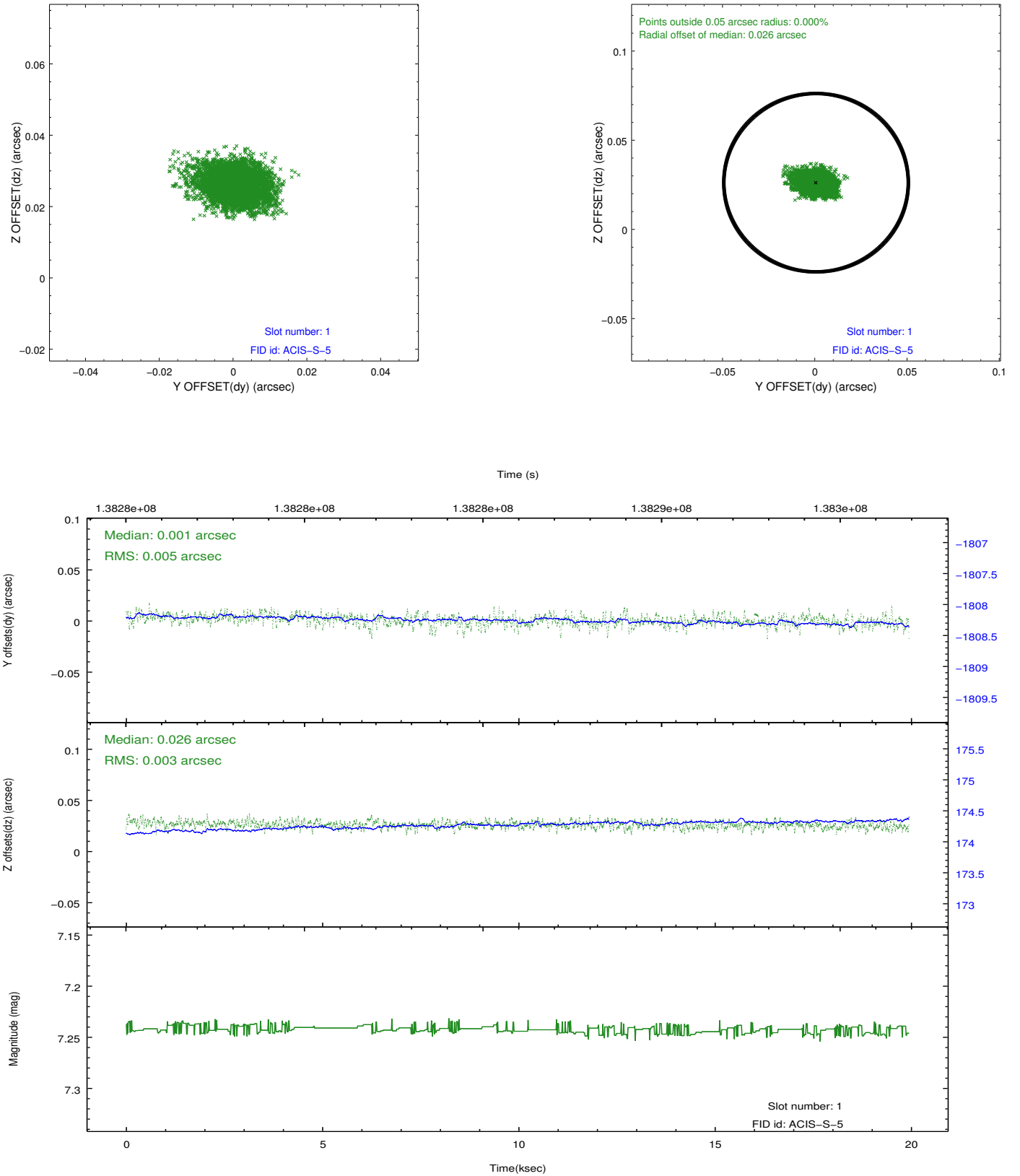


2.5 FID Slots

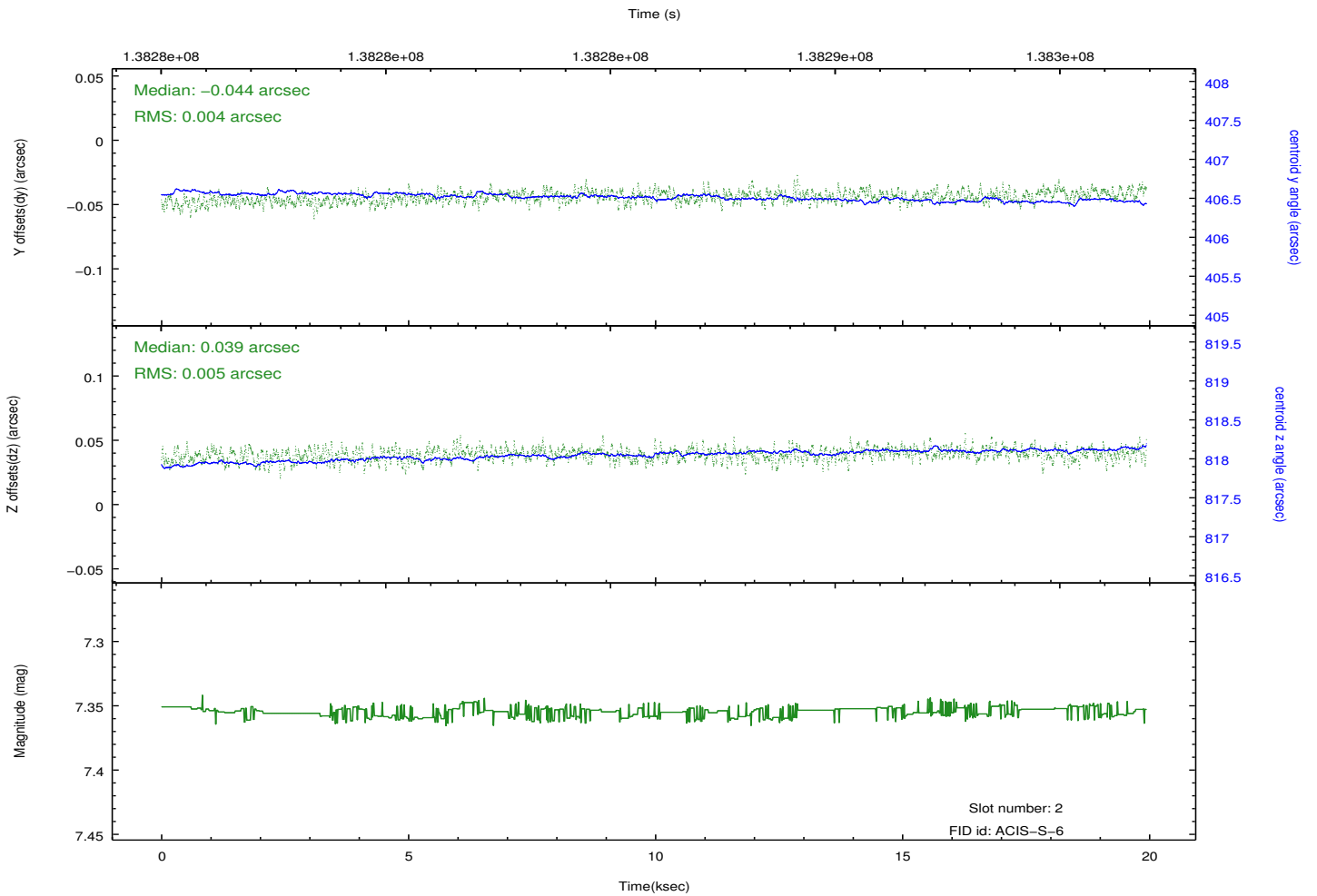
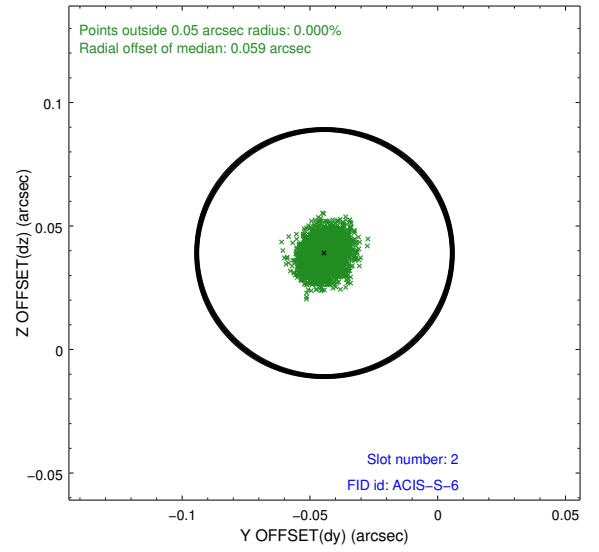
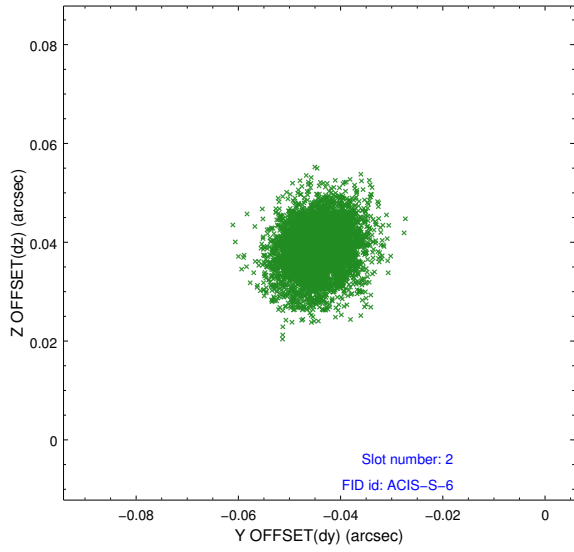
2.5.1 Slot 0



2.5.2 Slot 1



2.5.3 Slot 2



A Summary

A.1 Status

V&V Scientist	Beth Sundheim
V&V Date (YYYY-MM-DD)	2012.10.17
V&V Edition	1
V&V Disposition and Status	OK
V&V Charge Time	19.607

A.2 Comments