

V&V Reference Report

L2 ASCDS Version : 8.4.5

Observation 3268 - L2 Version 3
Chandra X-Ray Center

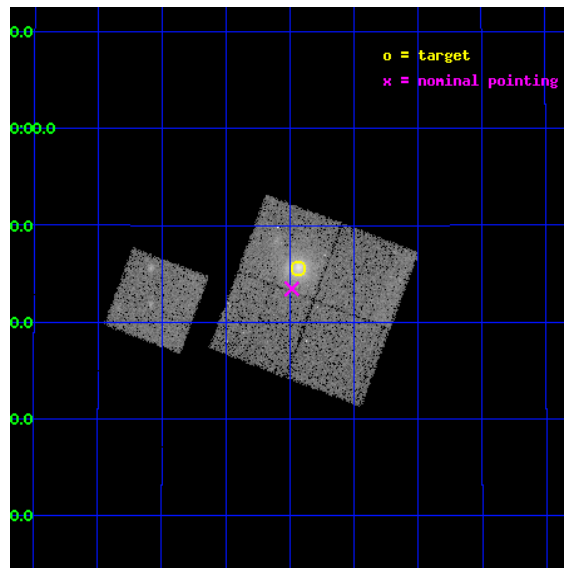
L2 Processing Date : Oct 4 2012

Contents

1	Front	2
2	OBI	3
2.1	OBI	3
2.1.1	Images	3
2.1.2	Bias	3
2.1.3	Parameters	4
2.1.4	Events	4
2.2	Compared Parameters	5
2.3	Aspect	6
2.4	Star Slots	9
2.4.1	Slot 3	9
2.4.2	Slot 4	10
2.4.3	Slot 5	11
2.4.4	Slot 6	12
2.4.5	Slot 7	13
2.5	FID Slots	14
2.5.1	Slot 0	14
2.5.2	Slot 1	15
2.5.3	Slot 2	16
A	Summary	17
A.1	Status	17
A.2	Comments	17

1 Front

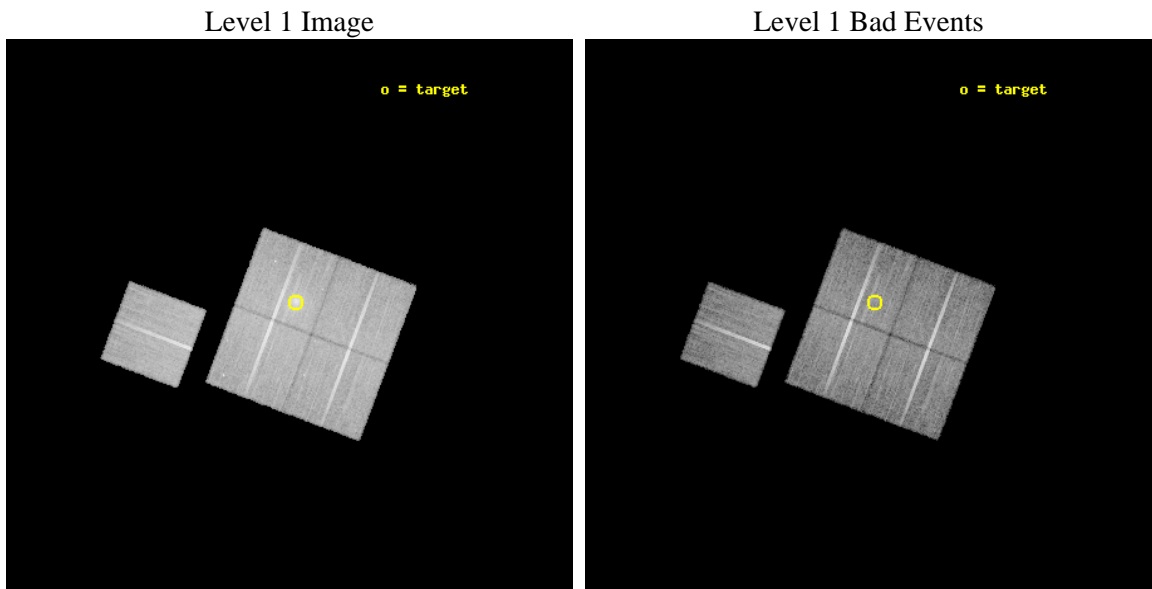
seq_num	800268	Sequence number
obs_id	3268	Observation id
title	MACS: THE X-RAY PROPERTIES OF THE MOST MASSIVE GALAXY CLUSTERS AT Z>0.3	Proposal title
observer	Dr. Harald Ebeling	Principal investigator
object	MACSJ0308.9+2645	Source name
dtcycle	0	
cycle	P	events from which exps? Prim/Second/Both
ra_targ	47.233333	Observer's specified target RA [deg]
dec_targ	26.760278	Observer's specified target Dec [deg]
ra_nom	47.246117847736	Nominal RA [deg]
dec_nom	26.724367194431	Nominal Dec [deg]
roll_nom	290.62045172032	Nominal Roll [deg]
revision	3	Processing version of data
ontime	24772.09995237	Sum of GTIs [s]
livetime	24448.434229538	Livetime [s]
ontime0	24759.536091462	Sum of GTIs [s]
ontime1	24772.09995237	Sum of GTIs [s]
ontime2	24768.958992109	Sum of GTIs [s]
ontime3	24772.09995237	Sum of GTIs [s]
ontime6	24768.958962202	Sum of GTIs [s]
l2events	73781	Number of level 2 events



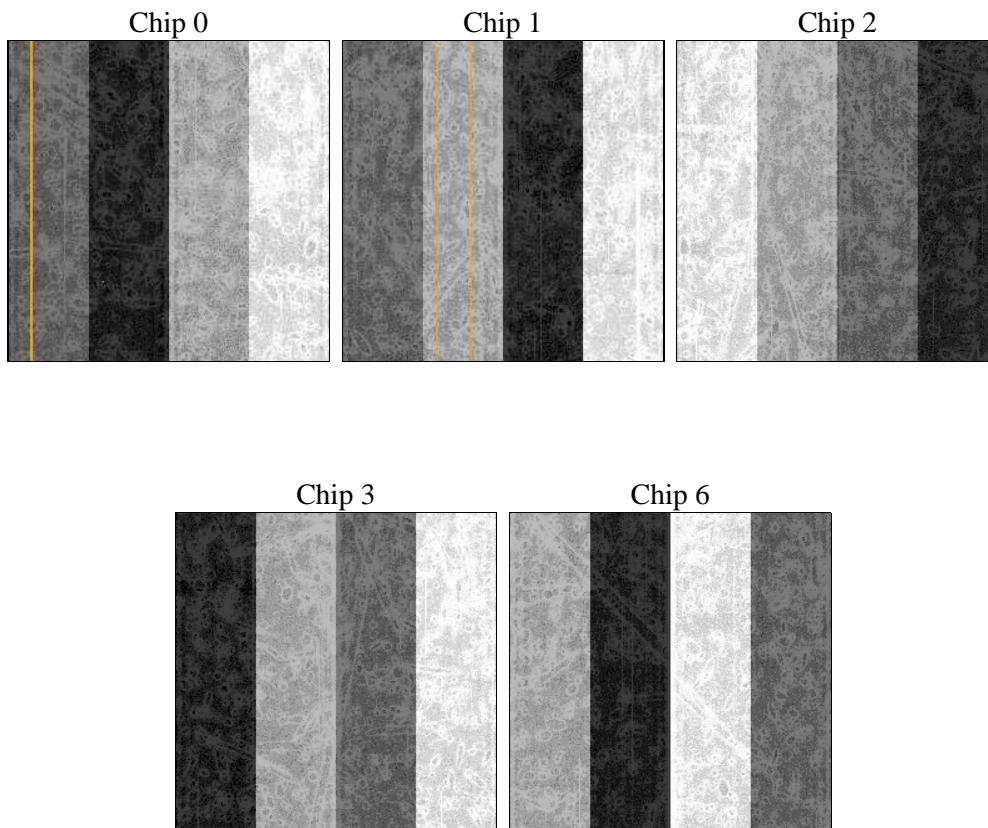
2 OBI

2.1 OBI

2.1.1 Images



2.1.2 Bias



2.1.3 Parameters

obi_num	1	Obi number	sched_exp_time	25000.000000	[s] Scheduled observation exposure time
ascdsver	8.4.5	Processing system revision	ontime	24772.09995237	Sum of GTIs [s]
caldbver	4.5.2	 	ontime0	24759.536091462	Sum of GTIs [s]
date	2012-10-04T00:58:02	Date and time of file creation	ontime1	24772.09995237	Sum of GTIs [s]
revision	3	Processing version of data	ontime2	24768.958992109	Sum of GTIs [s]
			ontime3	24772.09995237	Sum of GTIs [s]
			ontime6	24768.958962202	Sum of GTIs [s]
			l1events	726982	Number of level 1 events

2.1.4 Events

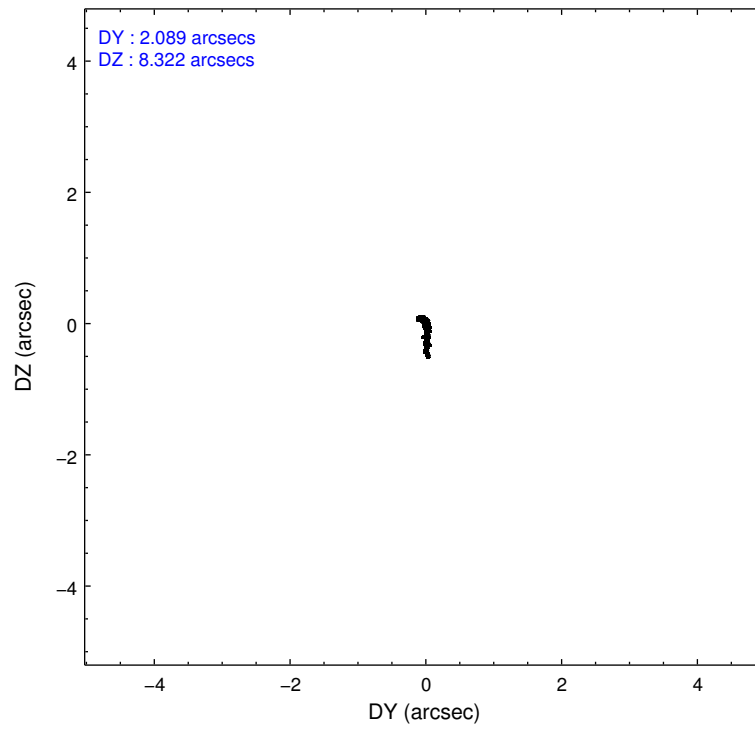
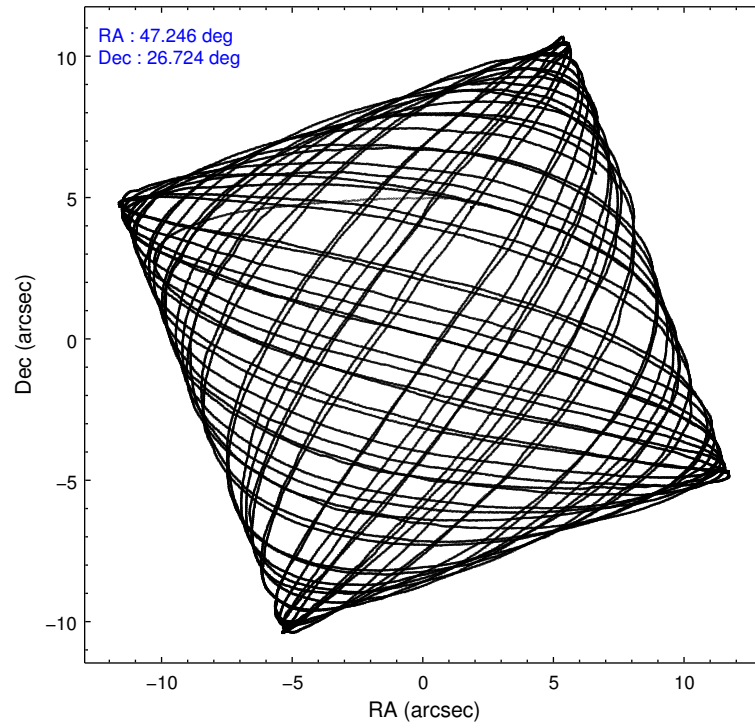
	ccd 0	ccd 1	ccd 2	ccd 3	ccd 6
level 1 events	133359	136307	152498	159244	145574
rejected events	119404	120774	138138	131124	130597
rejected %	89%	88%	90%	82%	89%

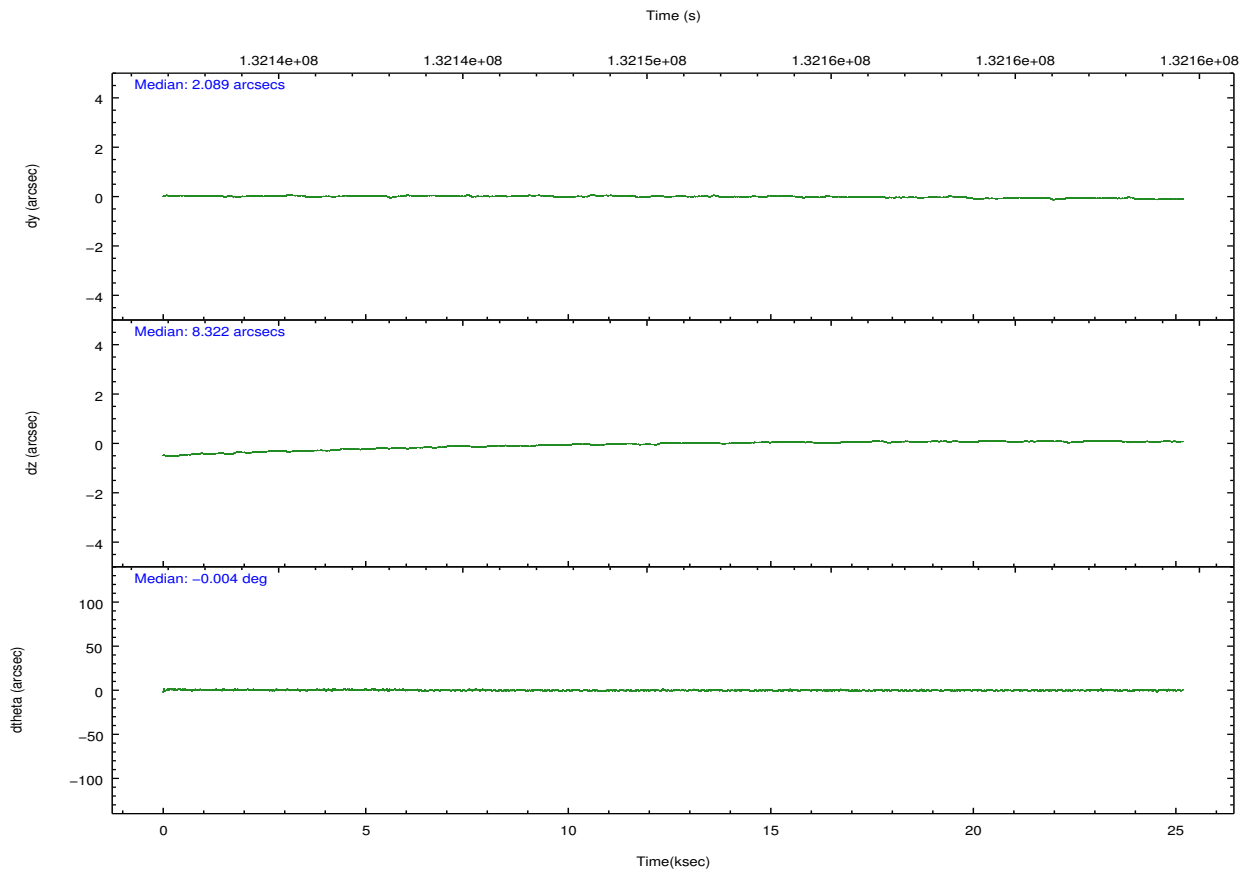
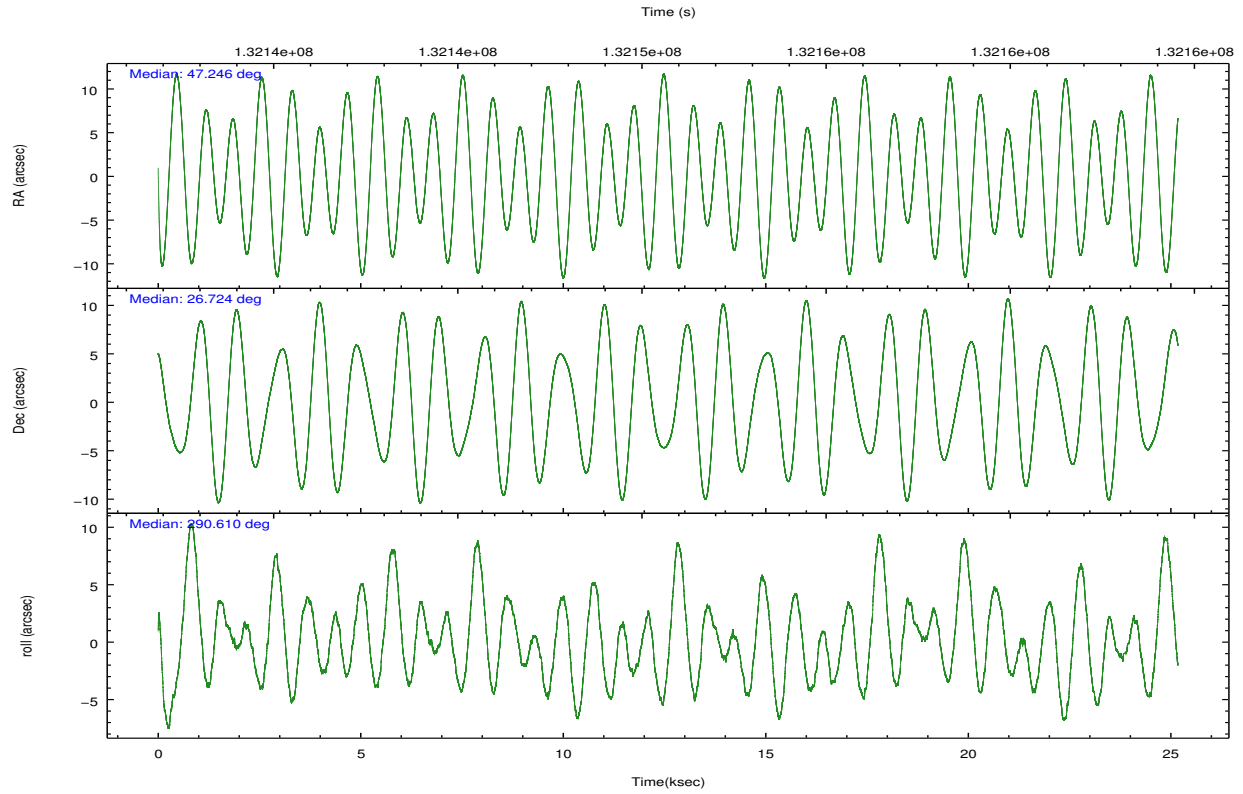
	ccd 0	ccd 1	ccd 2	ccd 3	ccd 6
grade 0 events	4892	5827	5582	16860	5673
	3%	4%	3%	10%	3%
grade 1 events	59	60	64	113	73
	0%	0%	0%	0%	0%
grade 2 events	3231	3177	3201	4219	3036
	2%	2%	2%	2%	2%
grade 3 events	1685	1787	1532	1952	1701
	1%	1%	1%	1%	1%
grade 4 events	1451	1779	1501	2038	1580
	1%	1%	0%	1%	1%
grade 5 events	4651	4967	4355	5034	5004
	3%	3%	2%	3%	3%
grade 6 events	2696	2967	2547	3053	2989
	2%	2%	1%	1%	2%
grade 7 events	114694	115743	133716	125975	125518
	86%	84%	87%	79%	86%

2.2 Compared Parameters

Parameter	Planned	Actual	Parameter	Planned	Actual
Instrument	ACIS	ACIS	Obspar format version number	7	7
Detector	ACIS-01236	ACIS-01236	Obspar file type	PREDICTED	ACTUAL
Grating	NONE	NONE	Obspar update status	NONE	UPDATED
Data mode	VFAINT	VFAINT	Number of optional ACIS chips dropped	0	0
Observation mode	POINTING	POINTING	On-chip summing requested	N	N
[deg] Pointing RA	47.222361	47.24611784773606	Subarray requested	NONE	NONE
[deg] Pointing Dec	26.741697	26.72436719443098	Alternating exposures requested	N	N
[deg] Pointing Roll	290.422451	290.6204517203216	[s] Primary exposure time	0.000000	3.1
[mm] SIM focus pos	-0.782348	-0.7809083437167272			
[mm] SIM defocus	0	0.001439871863259334			
[mm] SIM translation stage pos	-227.742463	-227.734108438797			
[mm] SIM translation stage offset	-5.85	-5.858344564132665			
[s] Observation start time (MET)	132138294.184000	132137405.17502			
Observation start date	2002-03-10T09:03:50	2002-03-10T08:50:05			
[s] Observation end time (MET)	132163294.184000	132164172.5386			
Observation end date	2002-03-10T16:00:30	2002-03-10T16:16:12			
Read mode	TIMED	TIMED			

2.3 Aspect



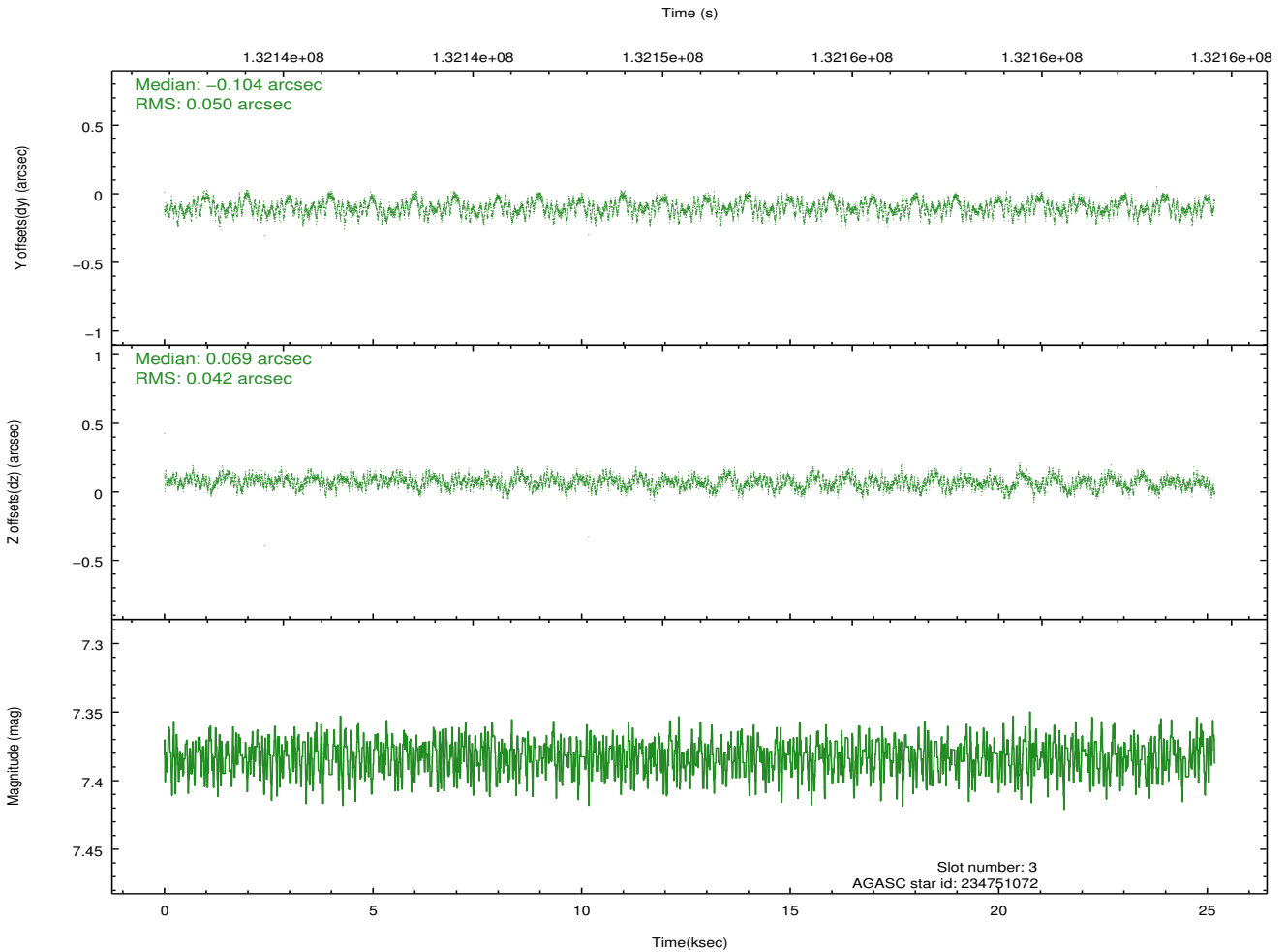
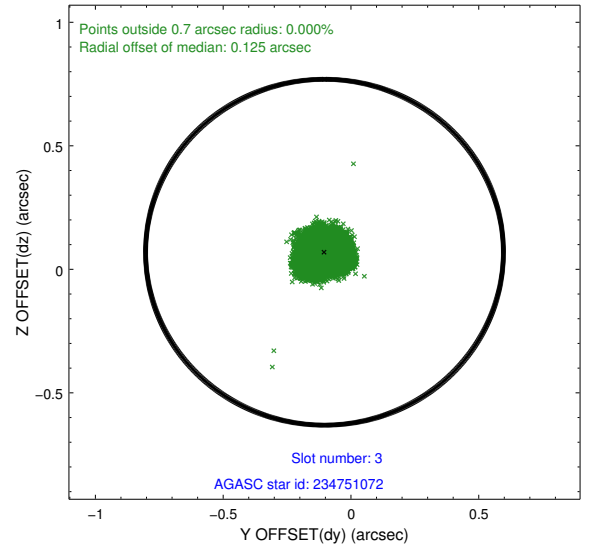
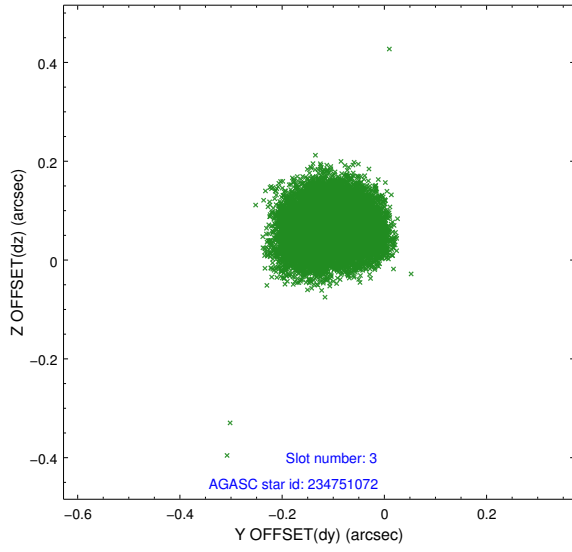


Slot Statistics

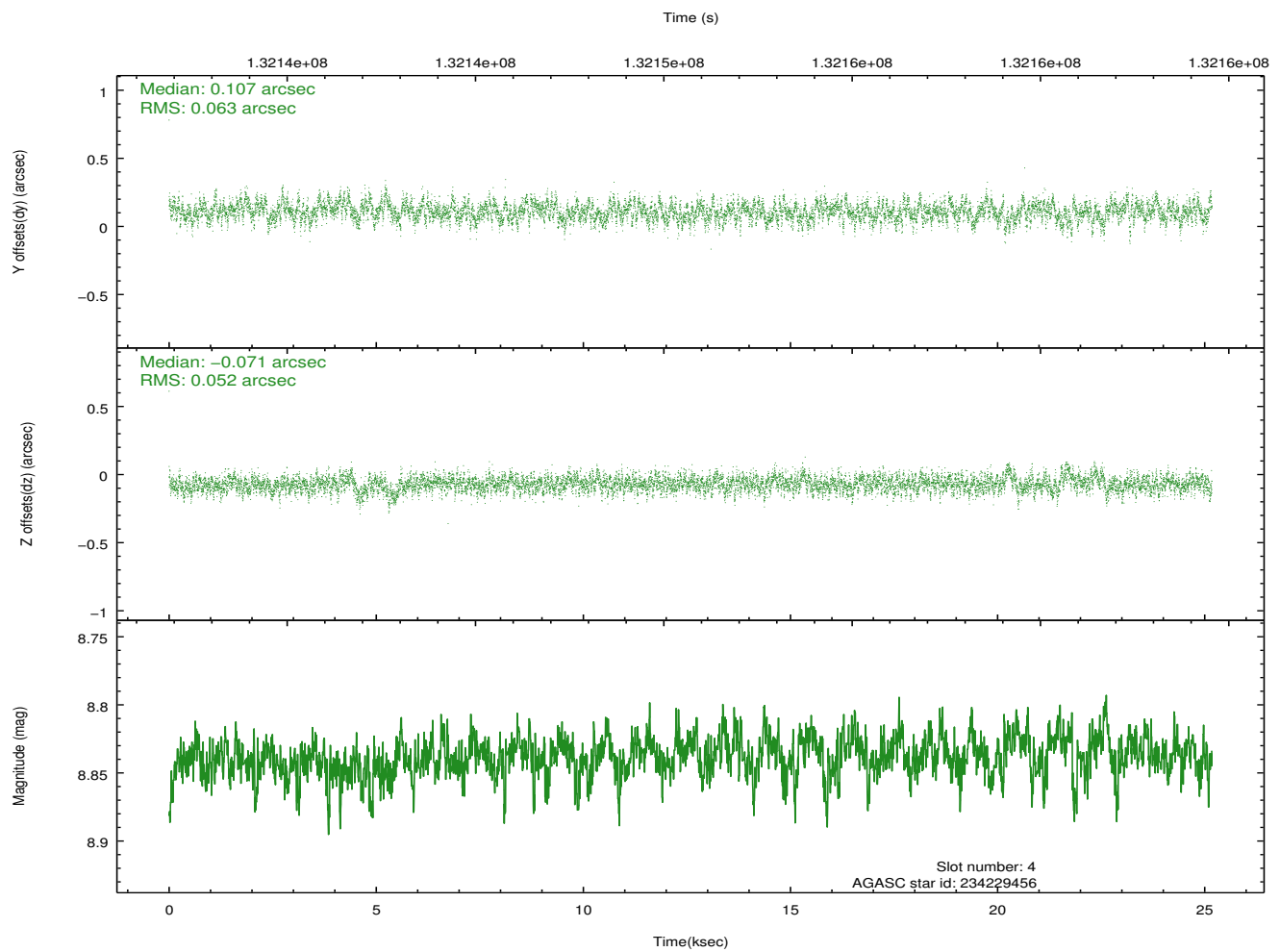
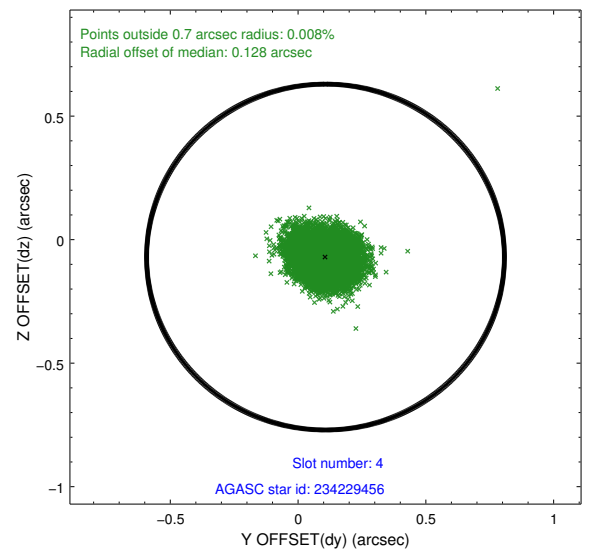
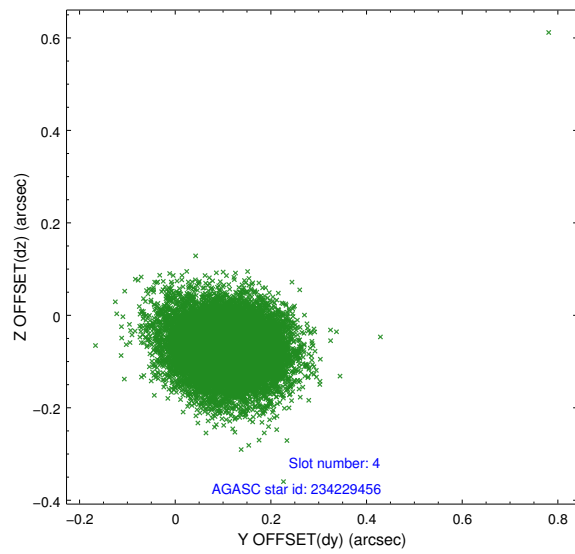
slot	status	id	mag	n_pts	med_dy	med_dz	dr1	dr2	ra	dec	mean_y	mean_z
0	FID	ACIS-I-1	7.24	6139	0.000	-0.111	0.006	0.011	0.000000	0.000000	937.66	-952.00
1	FID	ACIS-I-3	7.43	6138	-0.031	0.193	0.007	0.012	0.000000	0.000000	55.20	-1085.11
2	FID	ACIS-I-5	7.23	6138	-0.060	-0.010	0.006	0.012	0.000000	0.000000	-1810.64	945.41
3	GUIDE	234751072	7.38	12279	-0.104	0.069	0.072	0.107	47.877608	26.845930	377.02	2104.58
4	GUIDE	234229456	8.84	12280	0.107	-0.071	0.086	0.141	46.890472	25.931846	2356.37	-2024.15
5	GUIDE	234754016	9.00	12279	-0.183	0.007	0.135	0.201	46.798553	26.509476	305.04	-1571.26
6	GUIDE	234229792	9.03	12277	0.059	-0.022	0.091	0.144	46.978822	26.059409	2026.56	-1595.53
7	GUIDE	234756856	9.33	12274	0.123	0.011	0.077	0.126	47.581798	26.349236	1727.23	593.68

2.4 Star Slots

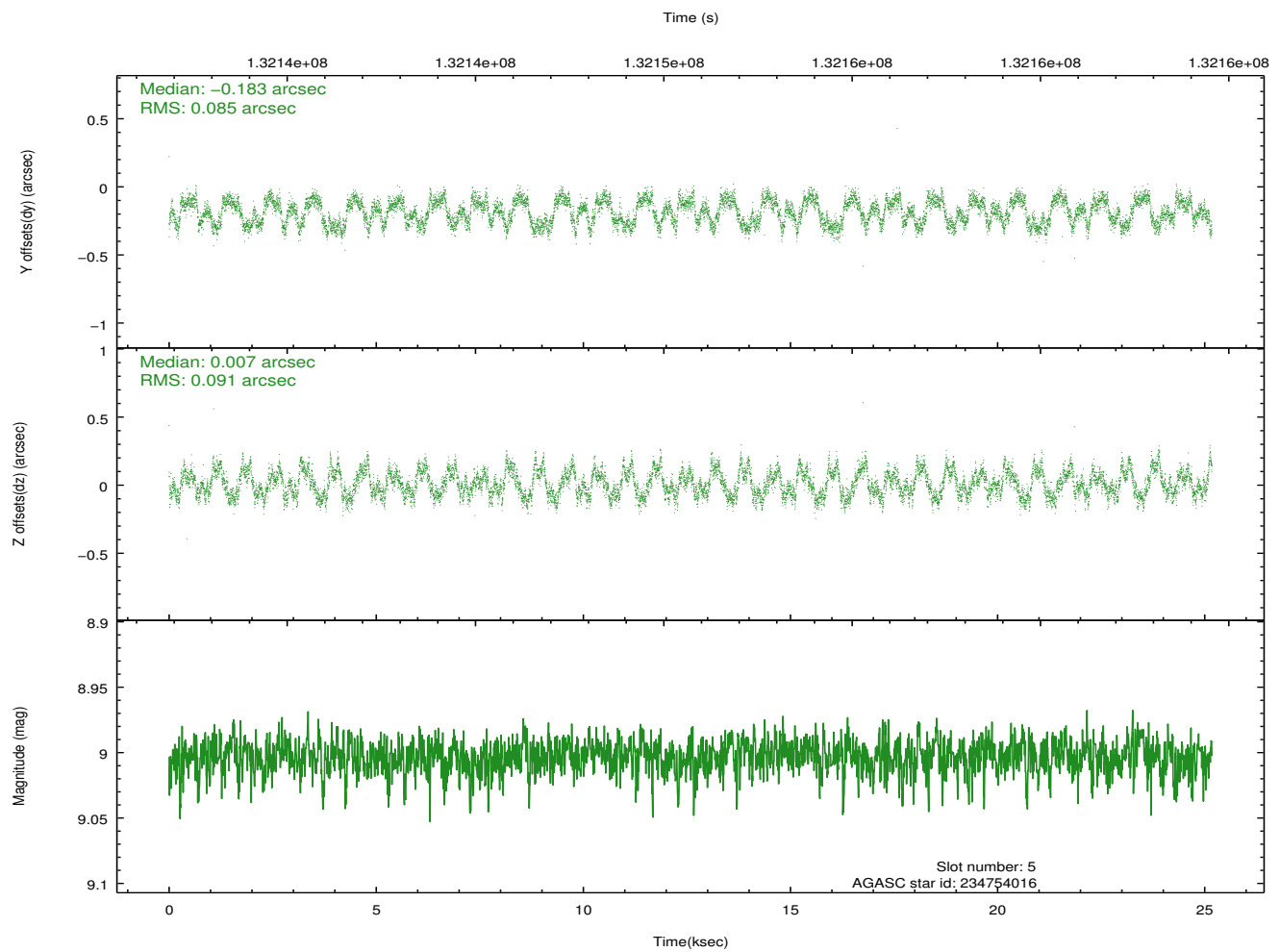
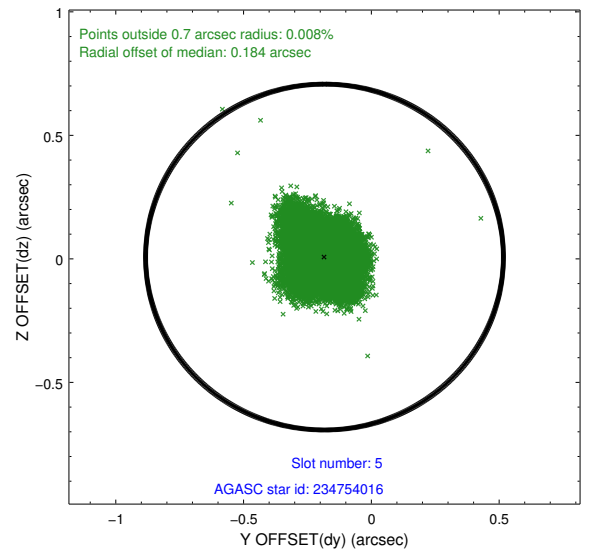
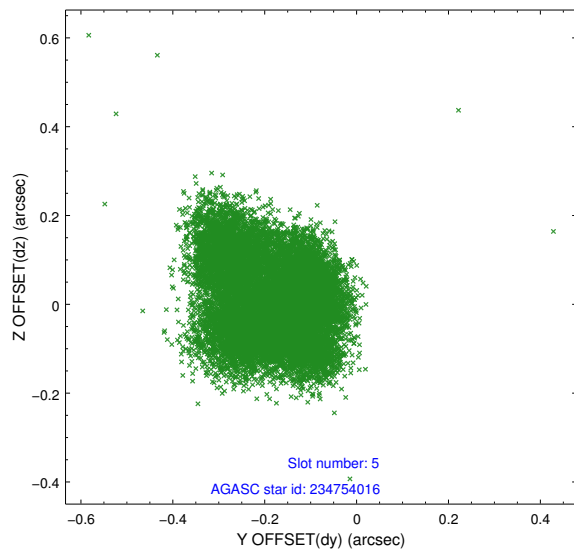
2.4.1 Slot 3



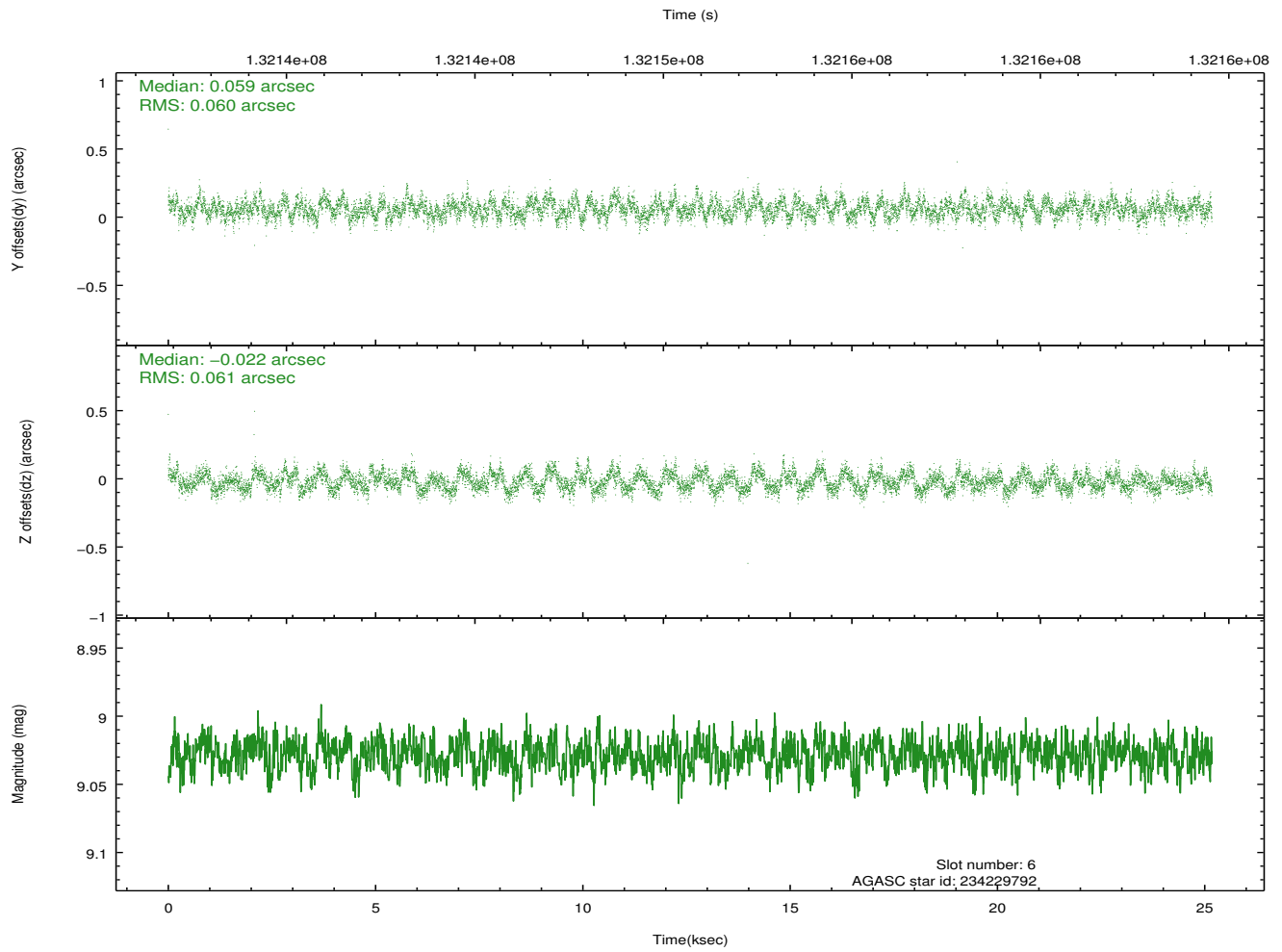
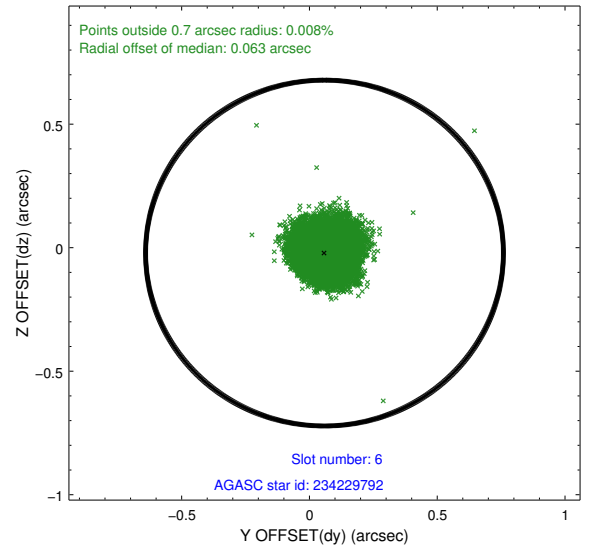
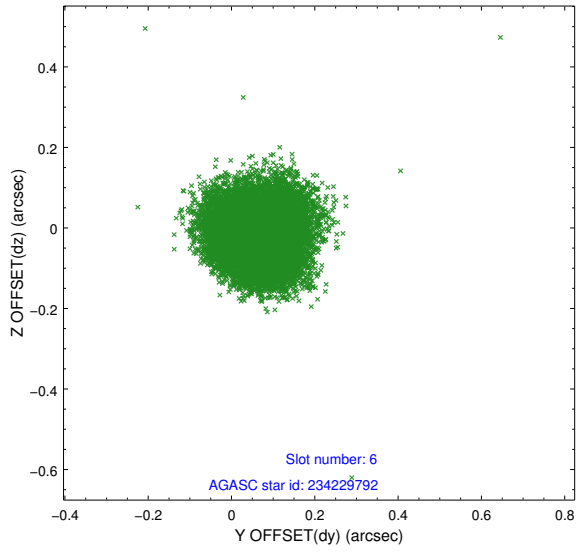
2.4.2 Slot 4



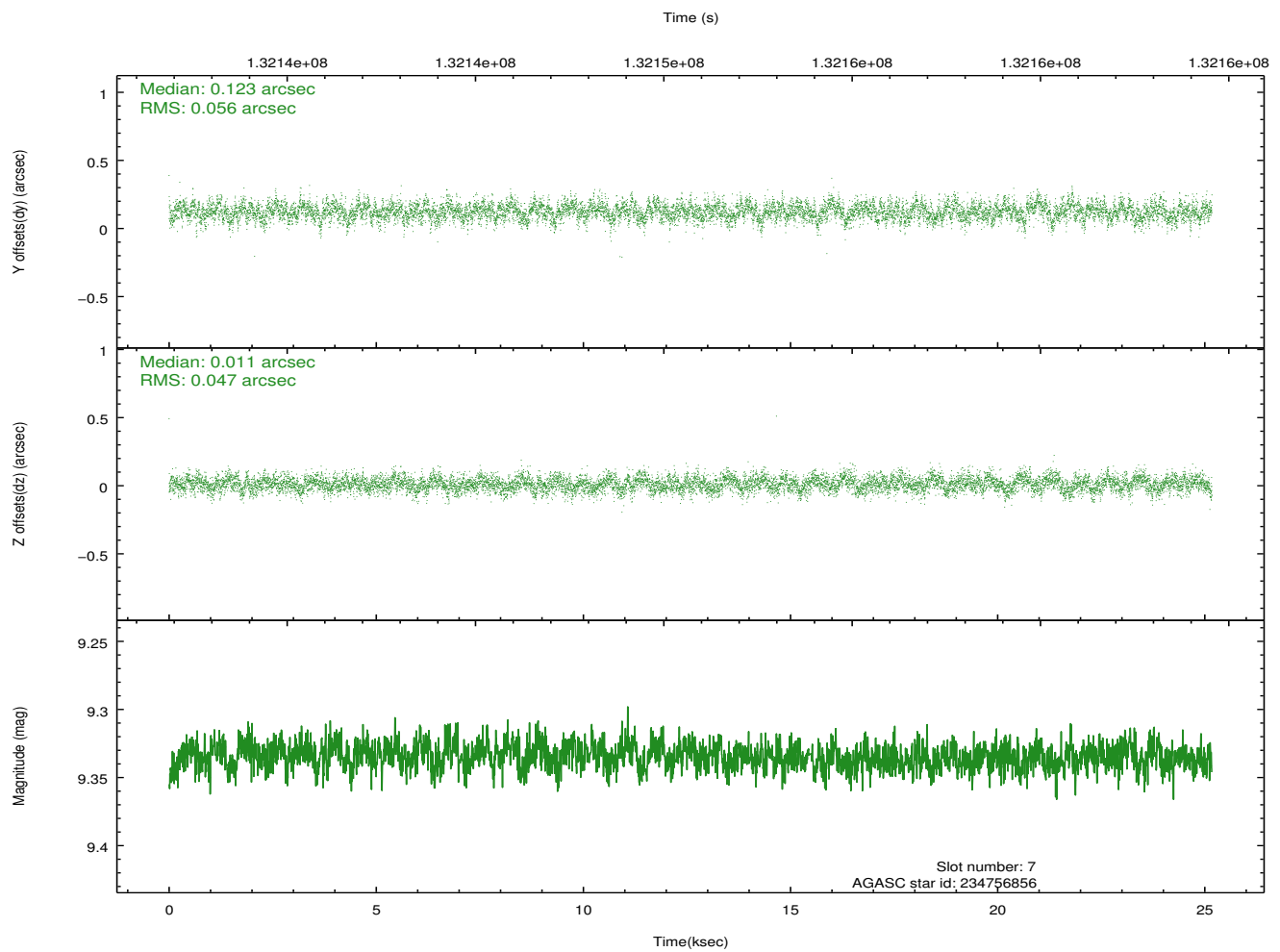
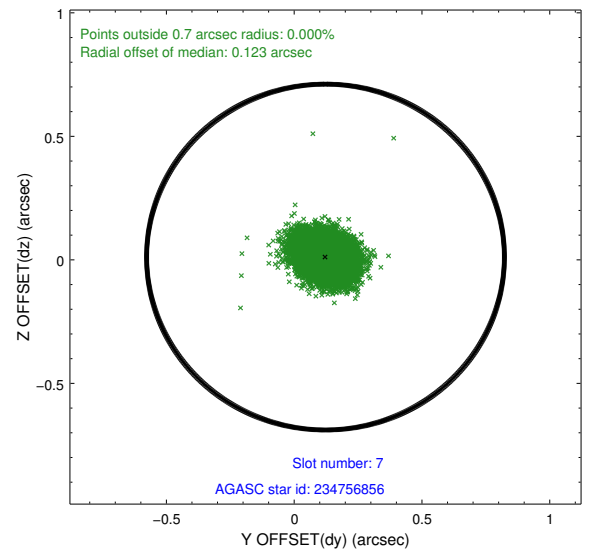
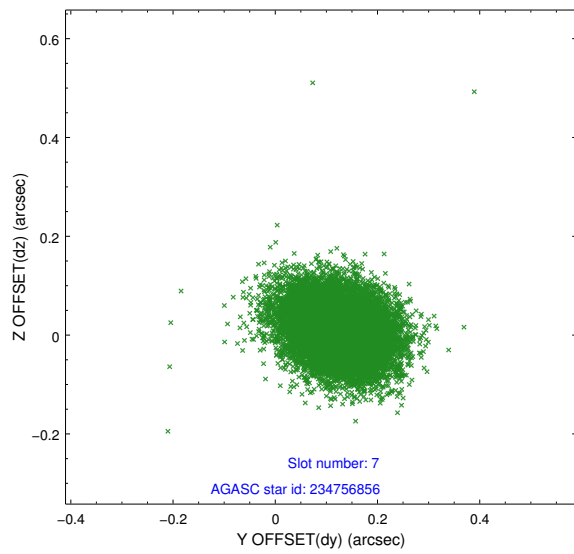
2.4.3 Slot 5



2.4.4 Slot 6

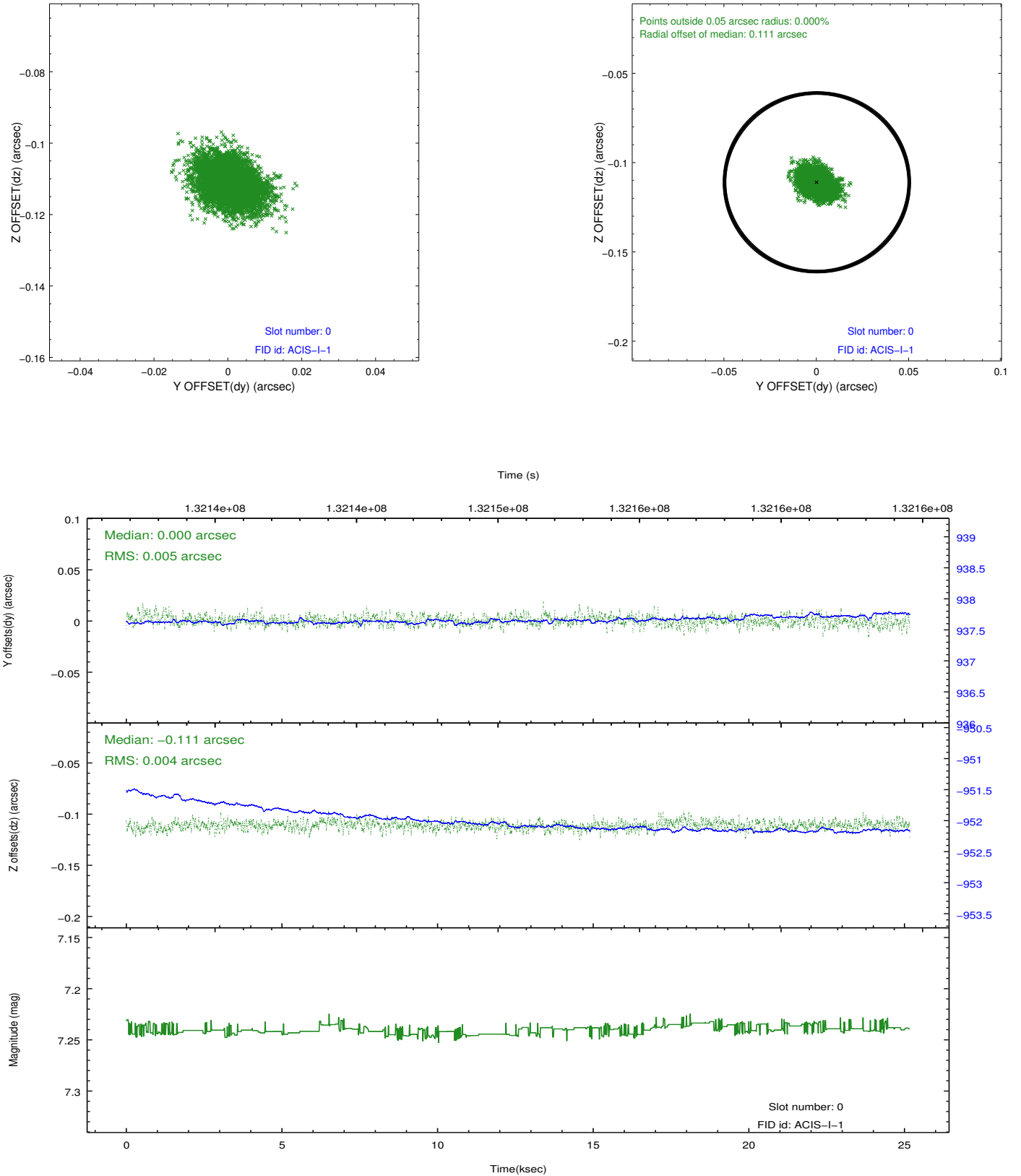


2.4.5 Slot 7

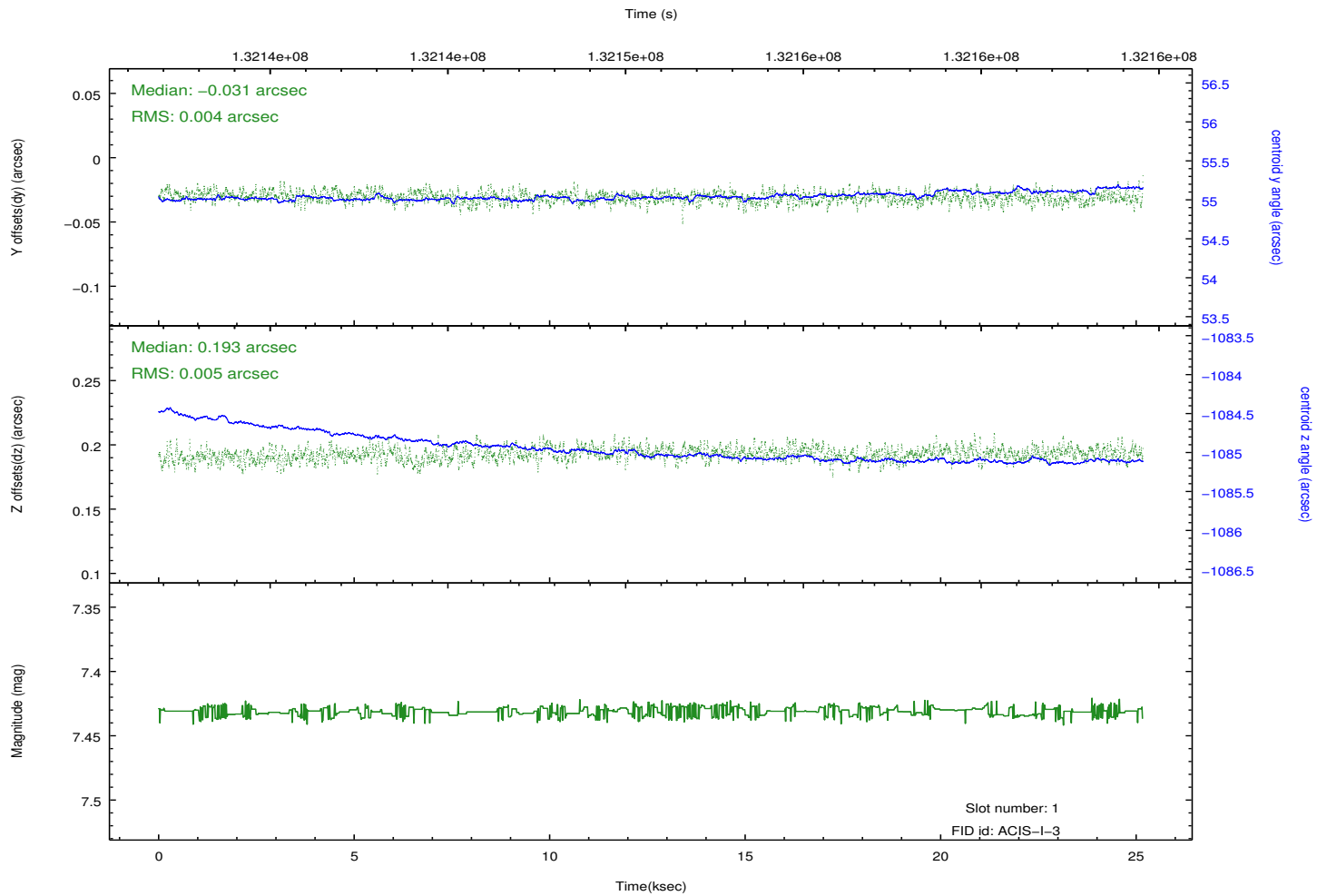
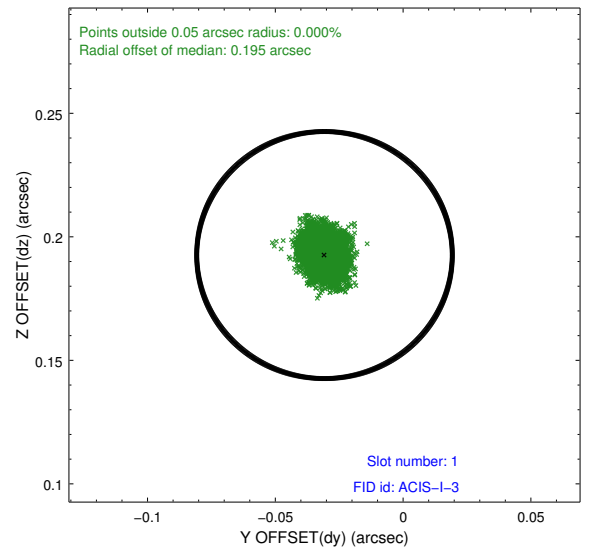
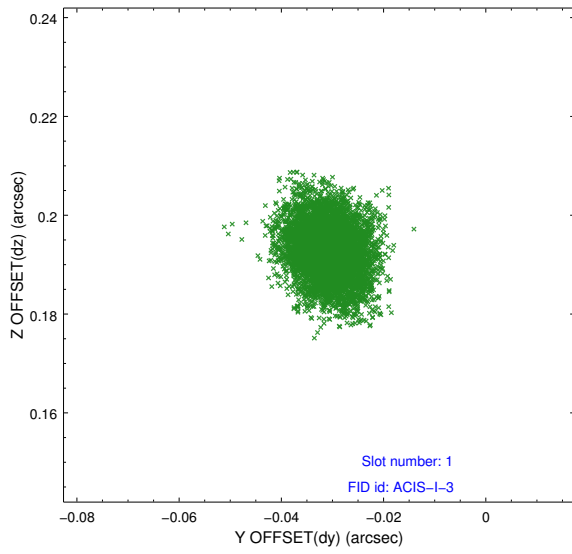


2.5 FID Slots

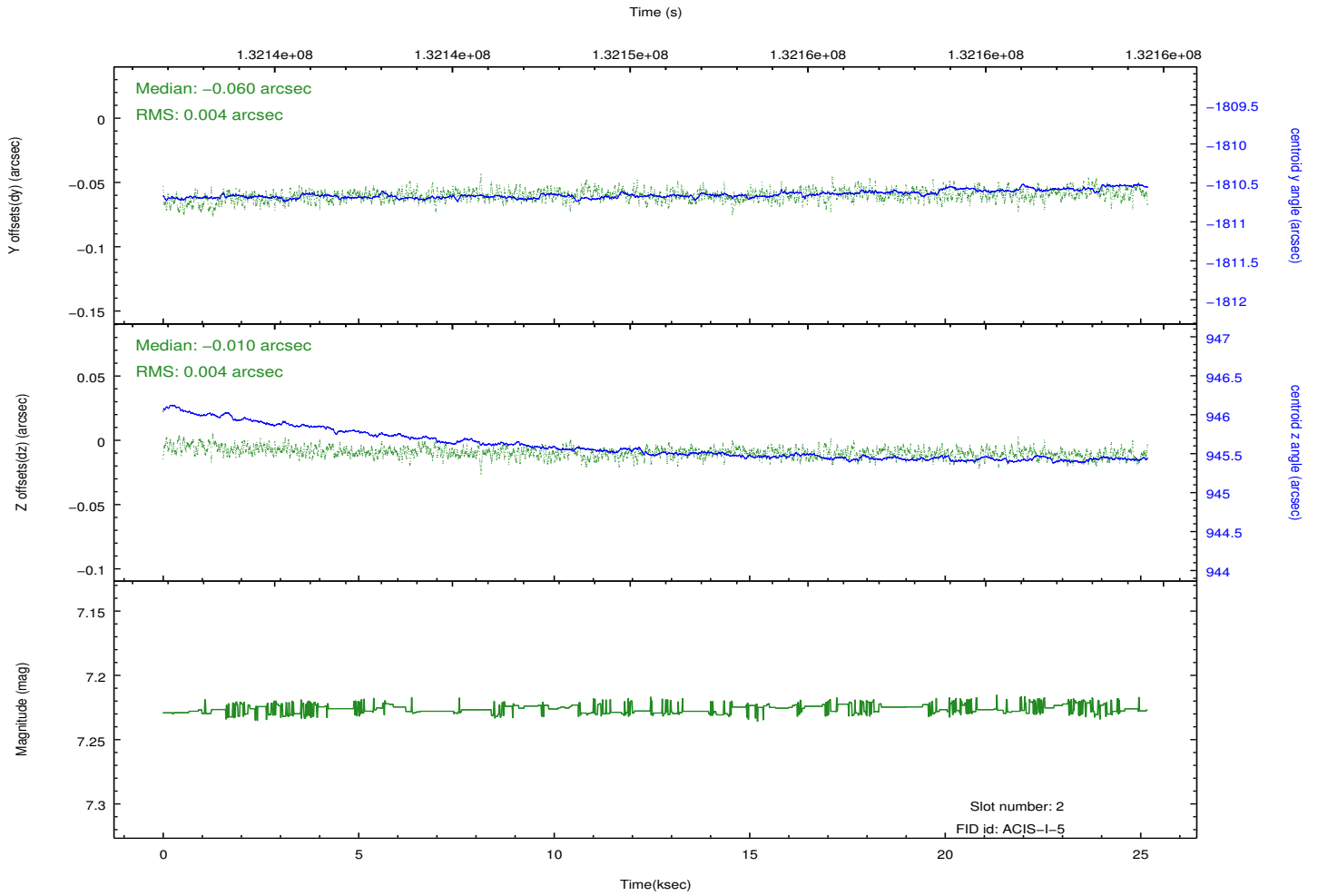
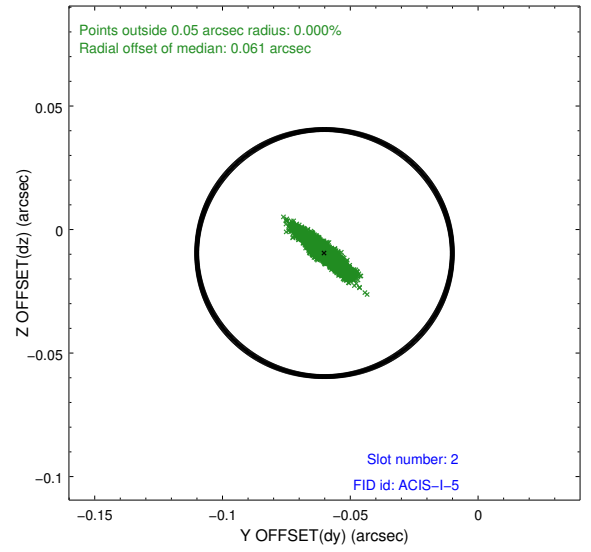
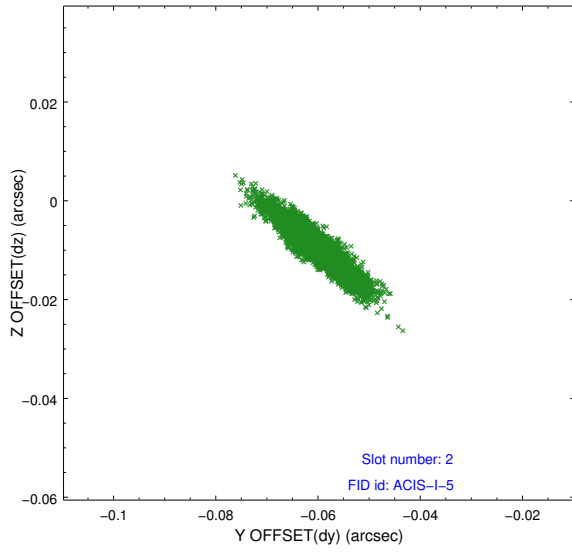
2.5.1 Slot 0



2.5.2 Slot 1



2.5.3 Slot 2



A Summary

A.1 Status

V&V Scientist	Beth Sundheim
V&V Date (YYYY-MM-DD)	2012.10.05
V&V Edition	1
V&V Disposition and Status	OK
V&V Charge Time	24.775

A.2 Comments